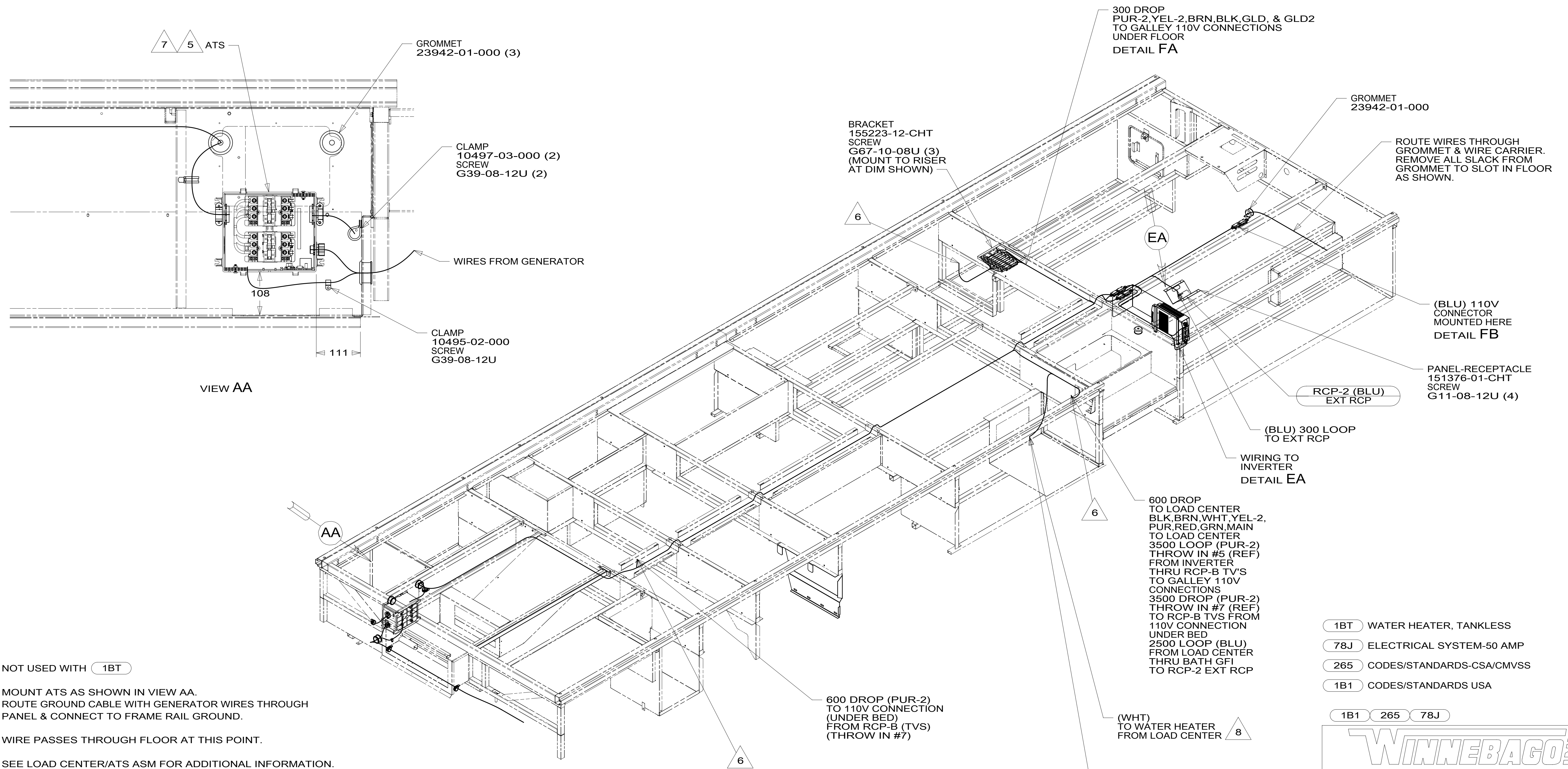


DRAWING NO.	FEATURE
301665-01	-----
301665-12	1B1 78J
301665-16	265 78J



- 8 NOT USED WITH 1BT
- 7 MOUNT ATS AS SHOWN IN VIEW AA. ROUTE GROUND CABLE WITH GENERATOR WIRES THROUGH PANEL & CONNECT TO FRAME RAIL GROUND.
- 6 WIRE PASSES THROUGH FLOOR AT THIS POINT.
- 5 SEE LOAD CENTER/ATS ASM FOR ADDITIONAL INFORMATION.
- 4. SEE WIRING DIAGRAM-BODY, 110V FOR ADDITIONAL INFORMATION.
- 3. ALL GROUND WIRE TO BE COVERED WITH TUBING 8041-02-000.
- 2. ALL 110V WIRE TO BE CLAMPED WITH CLAMP 10497-05-000 WITHIN 200MM OF OUTLET BOXES, USE SCREW G67-10-12U.
- 1. AT MINIMUM ALL WIRES TO BE SUPPORTED AND SECURED PER CODE REQUIREMENTS. USE CLAMP 10495 OR 10497 OR WIRE TIE 8343 OR 108046 AND SCREW G67-XX-XXX OR G56-XX-XXX AS APPROPRIATE FOR INSTALLATION.

NOTES:

- 1BT WATER HEATER, TANKLESS
- 78J ELECTRICAL SYSTEM-50 AMP
- 265 CODES/STANDARDS-CSA/CMVSS
- 1B1 CODES/STANDARDS USA

WINNEBAGO
COPYRIGHT 2016 WINNEBAGO INDUSTRIES, INC.

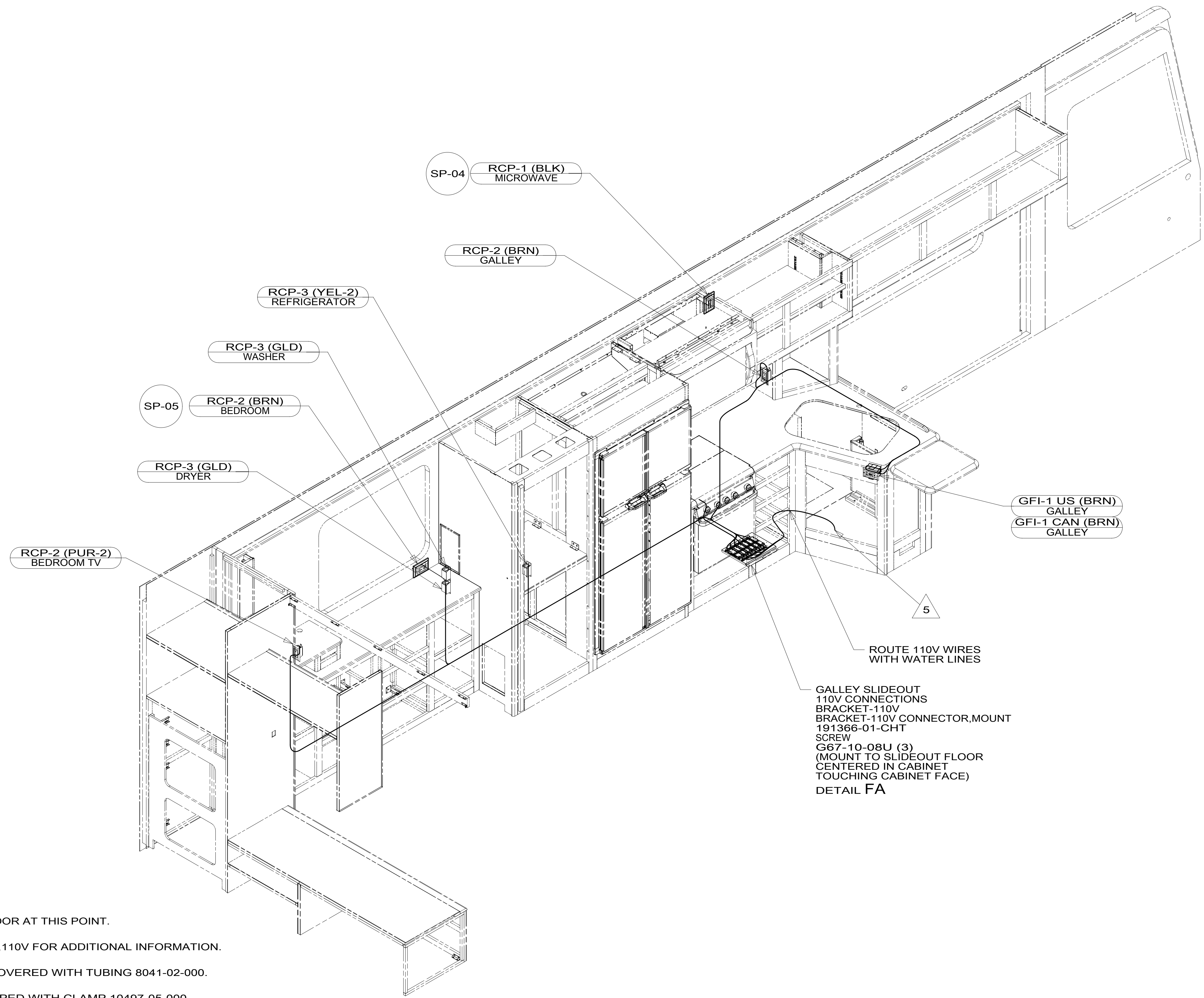
DSNR:	ALL DIMENSIONS ARE IN MILLIMETERS
DIFFR:	
UNSPECIFIED TOLERANCES:	MATERIAL:
WHOLE DIM (X) : 3	
ONE-PLACE (X.X) : 1.5	
TWO-PLACE (X.XX) : 0.50	
ANGLE : 1°	
REFER TO ES0018 FOR FASTENER TIGHTENING GUIDELINES	WEIGHT: (LBS) FIRST USED: 16 J35P
DESCRIPTION: WIRING INSTL-BODY, 110V	
SHEET: 1 OF 8	ITEM/PART NO: 000211567 / 30166501000
REF:	1 13-Dec-2016

FOR ELECTRICAL TORQUE SPECIFICATIONS SEE DWG NO. 128783-01-000

FOR ELECTRICAL CALLOUTS SEE DWG NO. 121339-01-000

8 7 6 5 4 3 2 1

D
C
B
A



- 5 WIRE ROUTED THROUGH FLOOR AT THIS POINT.
- SEE WIRING DIAGRAM-BODY, 110V FOR ADDITIONAL INFORMATION.
 - ALL 110V WIRE TO BE CLAMPED WITH CLAMP 10497-05-000 WITHIN 200MM OF OUTLET BOXES, USE SCREW G67-10-12U.
 - AT MINIMUM ALL WIRES TO BE SUPPORTED AND SECURED PER CODE REQUIREMENTS. USE CLAMP 10495 OR 10497 OR WIRE TIE 8343 OR 108046 AND SCREW G67-XX-XXX OR G56-XX-XXX AS APPROPRIATE FOR INSTALLATION.

NOTES:

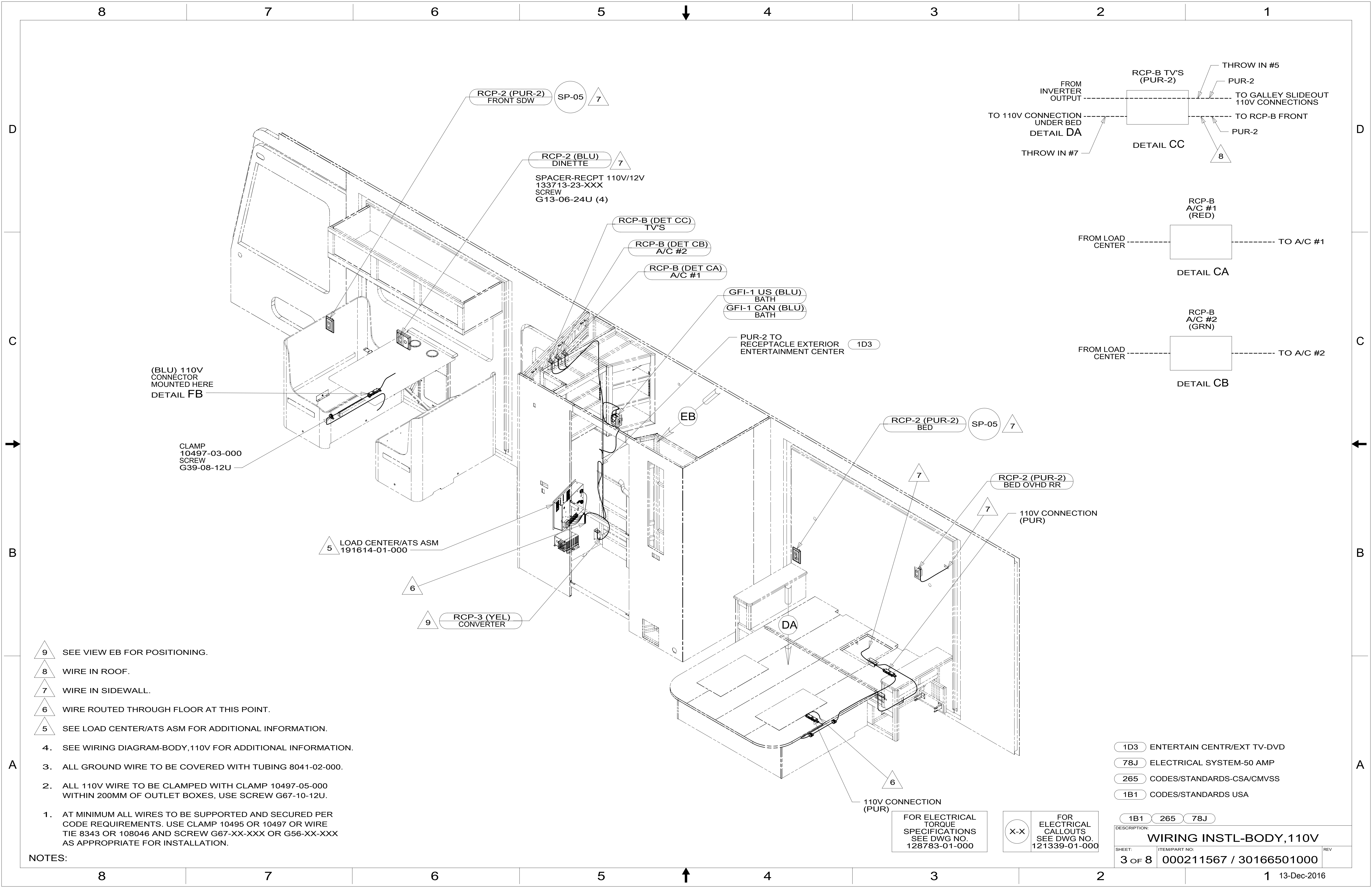
FOR ELECTRICAL TORQUE SPECIFICATIONS SEE DWG NO. 128783-01-000

FOR ELECTRICAL CALLOUTS SEE DWG NO. 121339-01-000

- 78J ELECTRICAL SYSTEM-50 AMP
- 265 CODES/STANDARDS-CSA/CMVSS
- 1B1 CODES/STANDARDS USA

DESCRIPTION: WIRING INSTL-BODY, 110V		
SHEET: 2 OF 8	ITEM/PART NO: 000211567 / 30166501000	REV

8 7 6 5 4 3 2 1 13-Dec-2016



(BLU) 110V CONNECTOR MOUNTED HERE
DETAIL FB

CLAMP 10497-03-000 SCREW G39-08-12U

LOAD CENTER/ATS ASM 191614-01-000

RCP-3 (YEL) CONVERTER

RCP-2 (PUR-2) FRONT SDW SP-05 7

RCP-2 (BLU) DINETTE 7
SPACER-RECPT 110V/12V 133713-23-XXX SCREW G13-06-24U (4)

RCP-B (DET CC) TV'S

RCP-B (DET CB) A/C #2

RCP-B (DET CA) A/C #1

GFI-1 US (BLU) BATH
GFI-1 CAN (BLU) BATH

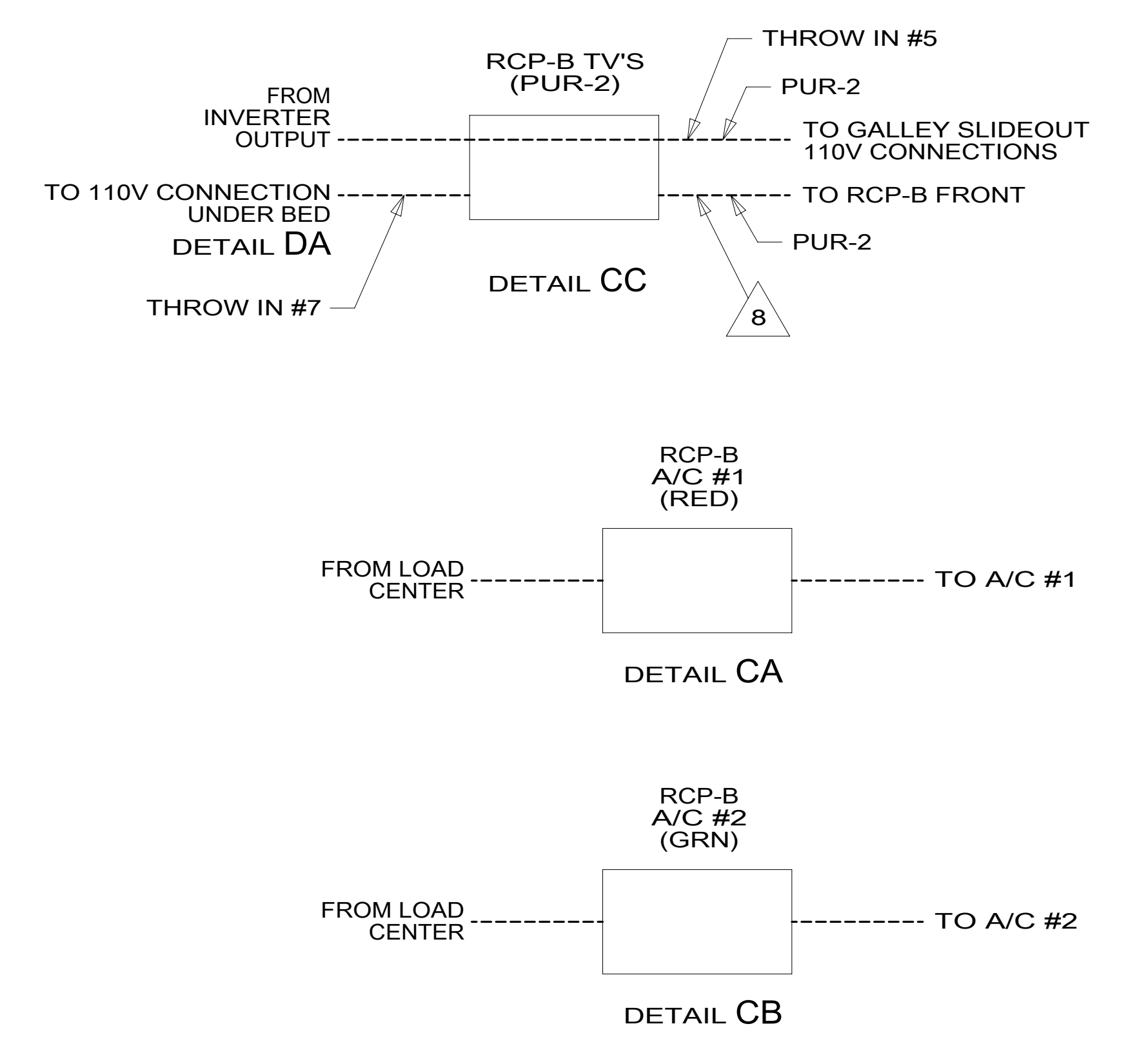
PUR-2 TO RECEPTACLE EXTERIOR ENTERTAINMENT CENTER 1D3

RCP-2 (PUR-2) BED SP-05 7

RCP-2 (PUR-2) BED OVHD RR 7

110V CONNECTION (PUR)

110V CONNECTION (PUR)



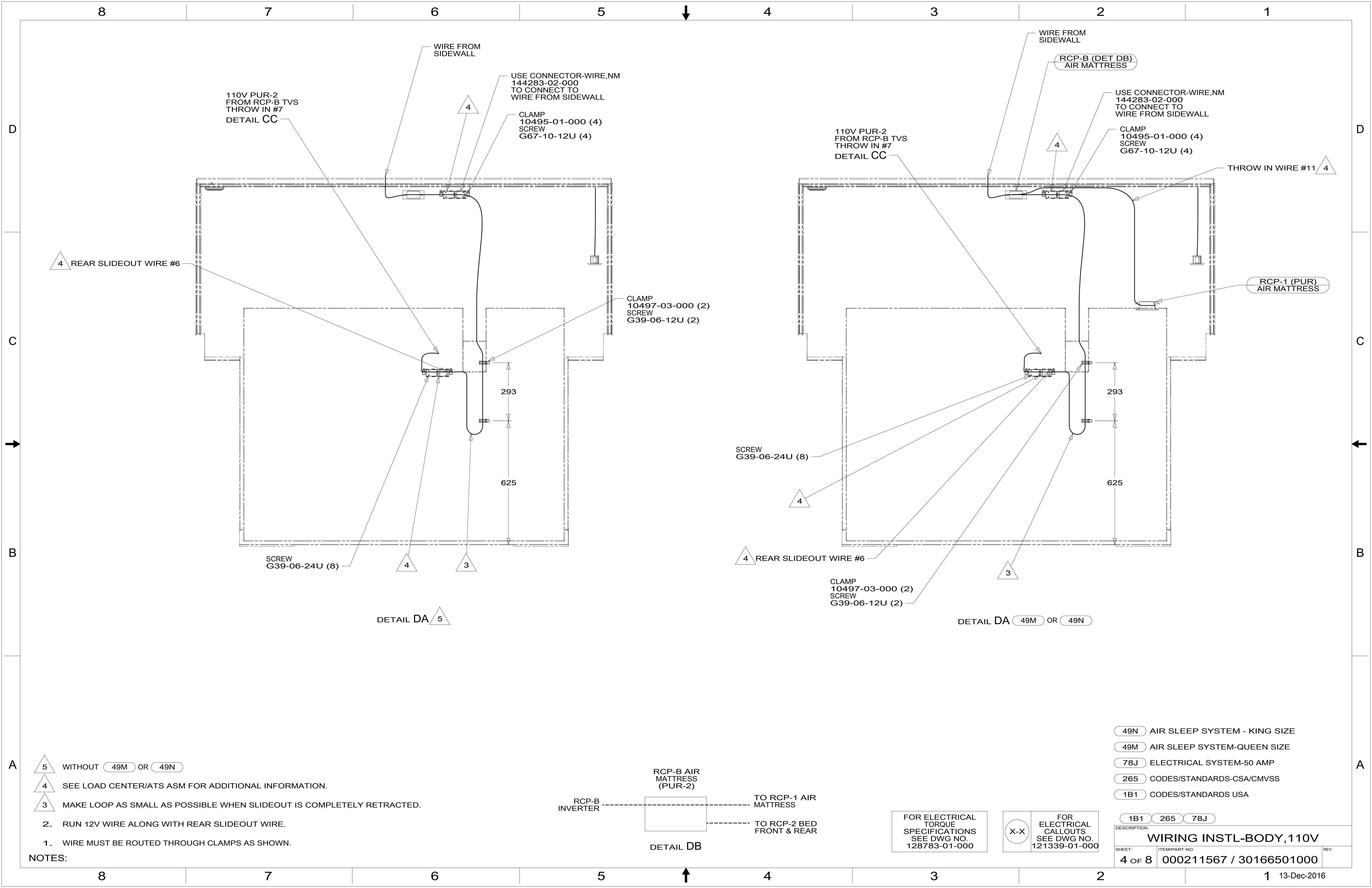
- NOTES:
1. AT MINIMUM ALL WIRES TO BE SUPPORTED AND SECURED PER CODE REQUIREMENTS. USE CLAMP 10495 OR 10497 OR WIRE TIE 8343 OR 108046 AND SCREW G67-XX-XXX OR G56-XX-XXX AS APPROPRIATE FOR INSTALLATION.
 2. ALL 110V WIRE TO BE CLAMPED WITH CLAMP 10497-05-000 WITHIN 200MM OF OUTLET BOXES, USE SCREW G67-10-12U.
 3. ALL GROUND WIRE TO BE COVERED WITH TUBING 8041-02-000.
 4. SEE WIRING DIAGRAM-BODY, 110V FOR ADDITIONAL INFORMATION.
 5. SEE LOAD CENTER/ATS ASM FOR ADDITIONAL INFORMATION.
 6. WIRE ROUTED THROUGH FLOOR AT THIS POINT.
 7. WIRE IN SIDEWALL.
 8. WIRE IN ROOF.
 9. SEE VIEW EB FOR POSITIONING.

FOR ELECTRICAL TORQUE SPECIFICATIONS SEE DWG NO. 128783-01-000

FOR ELECTRICAL CALLOUTS SEE DWG NO. 121339-01-000

- 1D3 ENTERTAIN CENTR/EXT TV-DVD
- 78J ELECTRICAL SYSTEM-50 AMP
- 265 CODES/STANDARDS-CSA/CMVSS
- 1B1 CODES/STANDARDS USA

DESCRIPTION: WIRING INSTL-BODY, 110V		
SHEET: 3 OF 8	ITEM/PART NO: 000211567 / 30166501000	REV



110V PUR-2 FROM RCP-B TVS THROW IN #7
DETAIL CC

WIRE FROM SIDEWALL

USE CONNECTOR-WIRE,NM 144283-02-000 TO CONNECT TO WIRE FROM SIDEWALL

CLAMP 10495-01-000 (4)
SCREW G67-10-12U (4)

CLAMP 10497-03-000 (2)
SCREW G39-06-12U (2)

SCREW G39-06-24U (8)

DETAIL DA 5

293

625

110V PUR-2 FROM RCP-B TVS THROW IN #7
DETAIL CC

WIRE FROM SIDEWALL
RCP-B (DET DB) AIR MATTRESS

USE CONNECTOR-WIRE,NM 144283-02-000 TO CONNECT TO WIRE FROM SIDEWALL

CLAMP 10495-01-000 (4)
SCREW G67-10-12U (4)

RCP-1 (PUR) AIR MATTRESS

SCREW G39-06-24U (8)

DETAIL DA 49M OR 49N

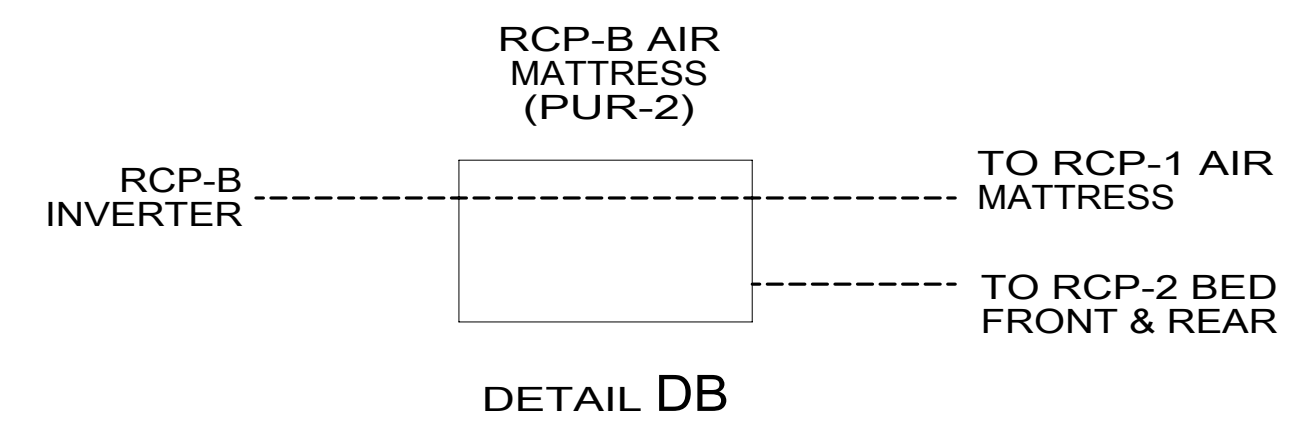
293

625

- 5 WITHOUT 49M OR 49N
- 4 SEE LOAD CENTER/ATS ASM FOR ADDITIONAL INFORMATION.
- 3 MAKE LOOP AS SMALL AS POSSIBLE WHEN SLIDEOUT IS COMPLETELY RETRACTED.

- 2. RUN 12V WIRE ALONG WITH REAR SLIDEOUT WIRE.
- 1. WIRE MUST BE ROUTED THROUGH CLAMPS AS SHOWN.

NOTES:



FOR ELECTRICAL TORQUE SPECIFICATIONS SEE DWG NO. 128783-01-000

FOR ELECTRICAL CALLOUTS SEE DWG NO. 121339-01-000

- 49N AIR SLEEP SYSTEM - KING SIZE
- 49M AIR SLEEP SYSTEM-QUEEN SIZE
- 78J ELECTRICAL SYSTEM-50 AMP
- 265 CODES/STANDARDS-CSA/CMVSS
- 1B1 CODES/STANDARDS USA

DESCRIPTION: WIRING INSTL-BODY, 110V		
SHEET: 4 OF 8	ITEM/PART NO: 000211567 / 30166501000	REV

8 7 6 5 4 3 2 1

D

C

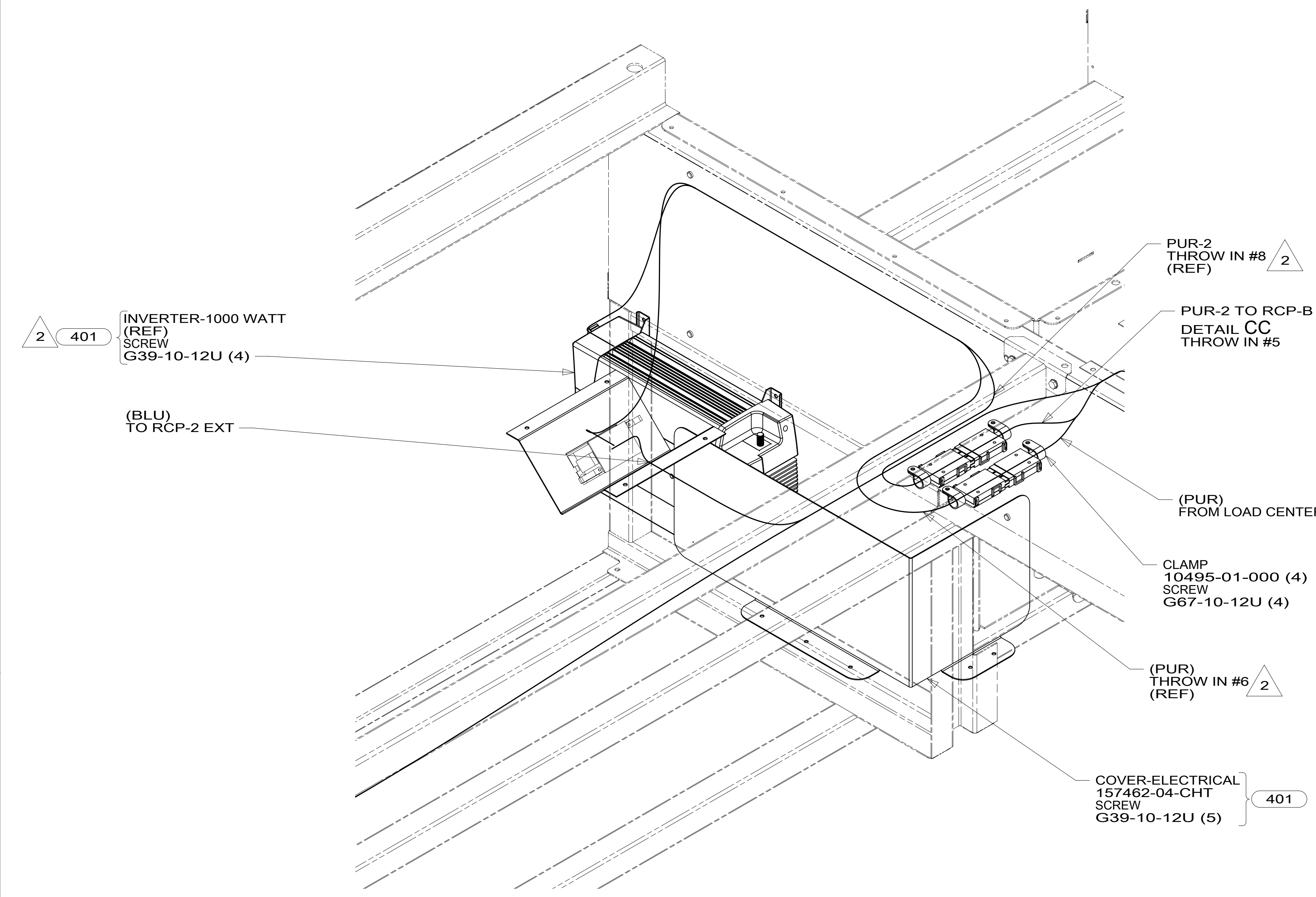
B

A

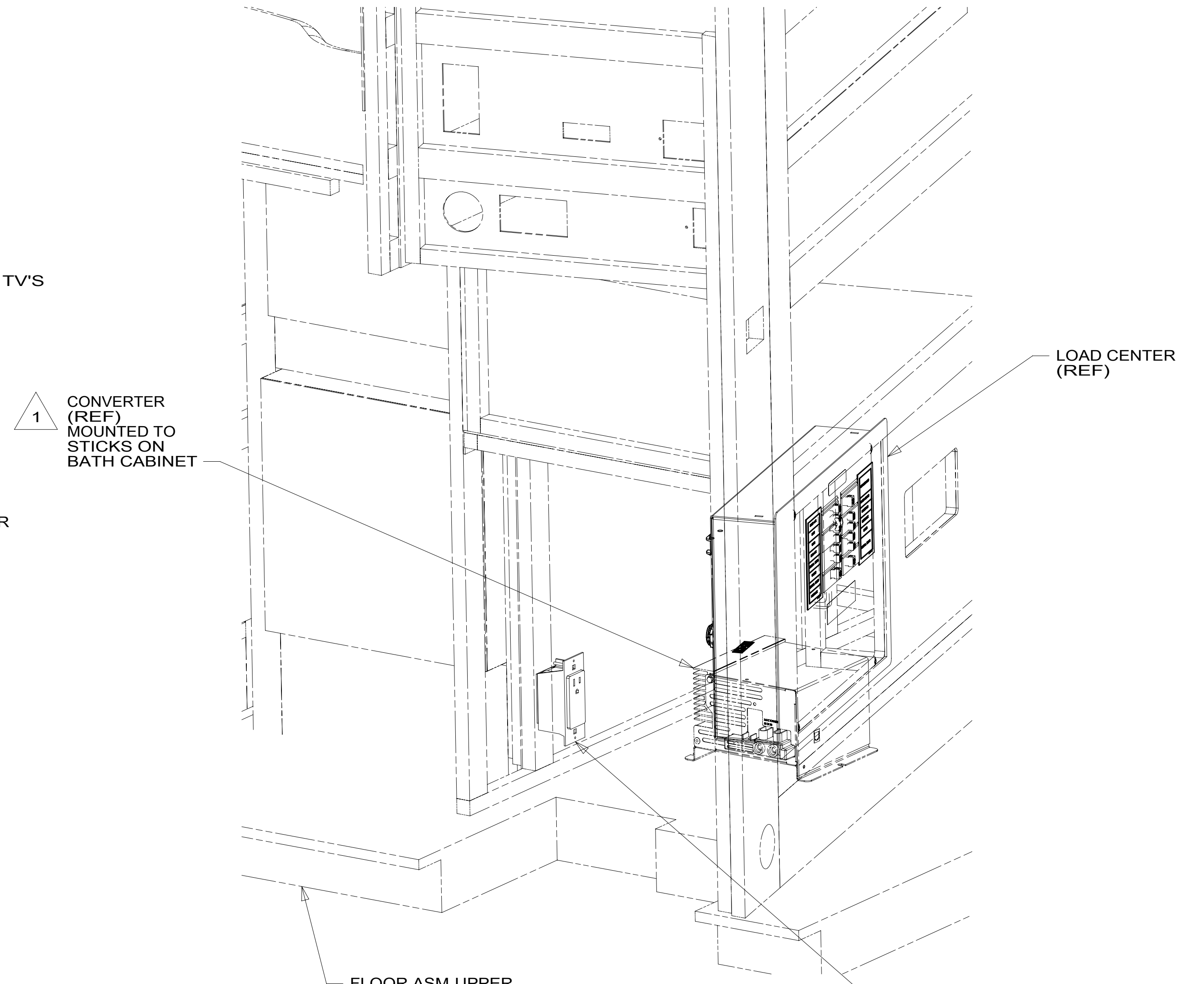
NOTES:

- 2 SEE LOAD CENTER/ATS ASM FOR ADDITIONAL INFORMATION.
- 1 SEE WIRING INSTL-BODY, 12V FOR ADDITIONAL INFORMATION.

8 7 6 5 4 3 2 1 13-Dec-2016



VIEW EA



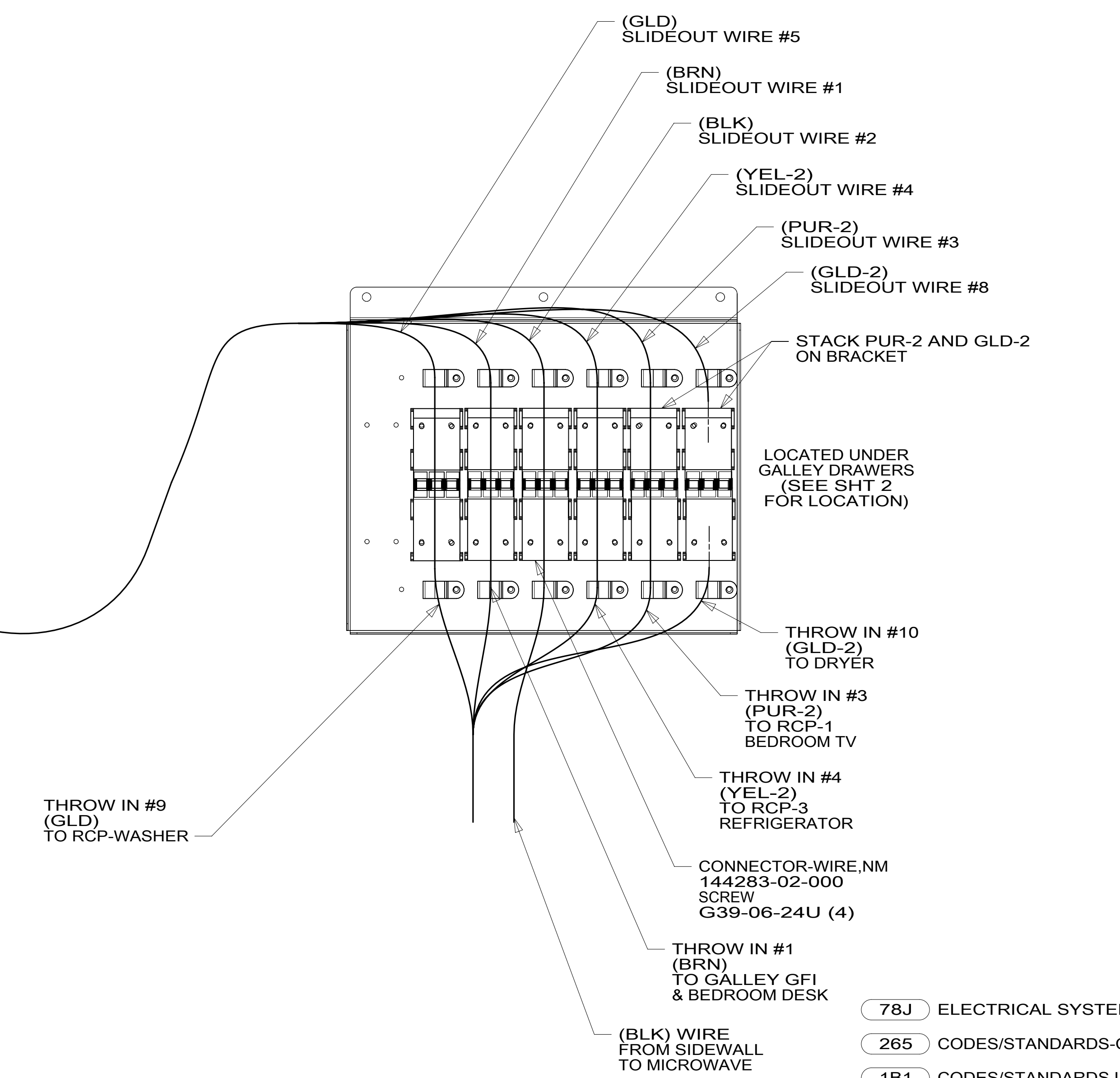
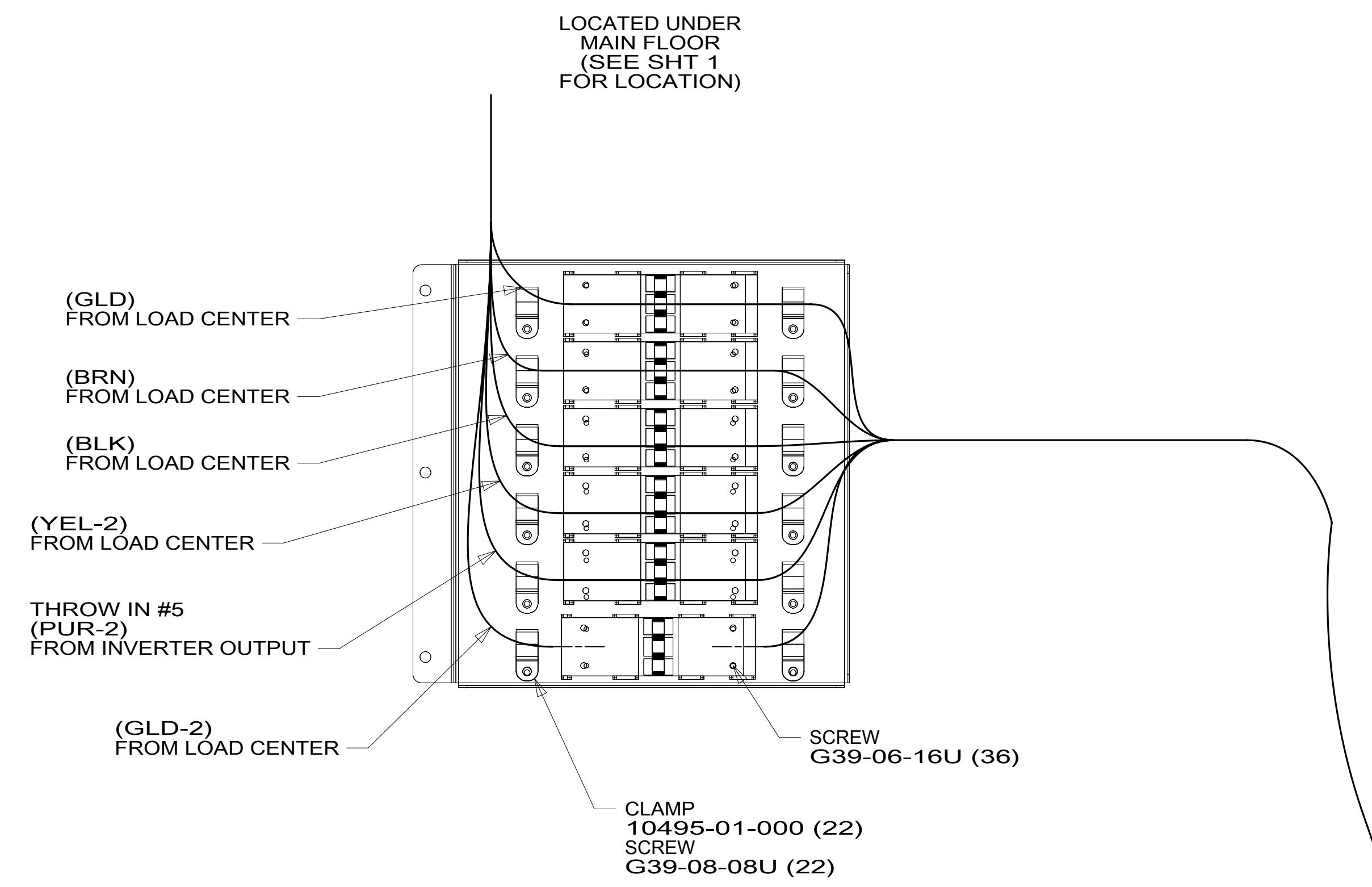
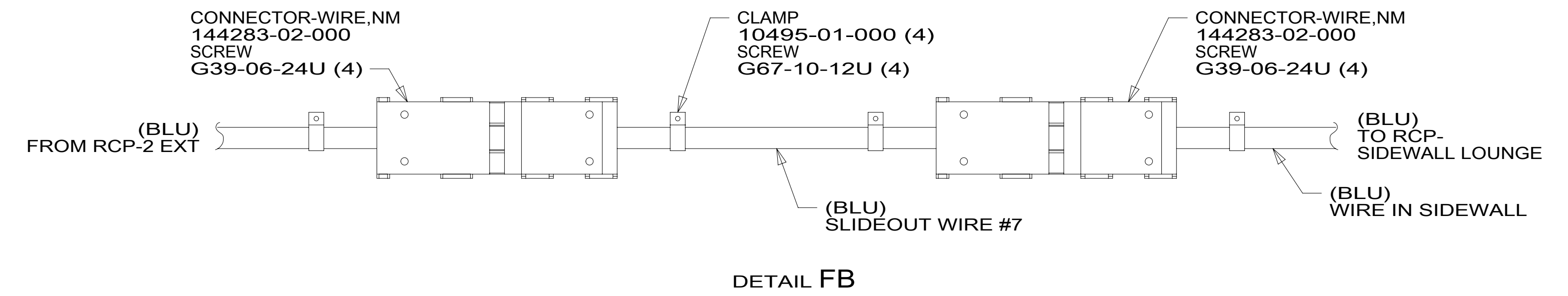
VIEW EB

- 401 INVERTER-DC/AC, 1000 WATT
- 78J ELECTRICAL SYSTEM-50 AMP
- 265 CODES/STANDARDS-CSA/CMVSS
- 1B1 CODES/STANDARDS USA

FOR ELECTRICAL TORQUE SPECIFICATIONS SEE DWG NO. 128783-01-000

FOR ELECTRICAL CALLOUTS SEE DWG NO. 121339-01-000

DESCRIPTION:	1B1 265 78J	
WIRING INSTL-BODY, 110V		
SHEET:	ITEM/PART NO.:	REV:
5 OF 8	000211567 / 30166501000	



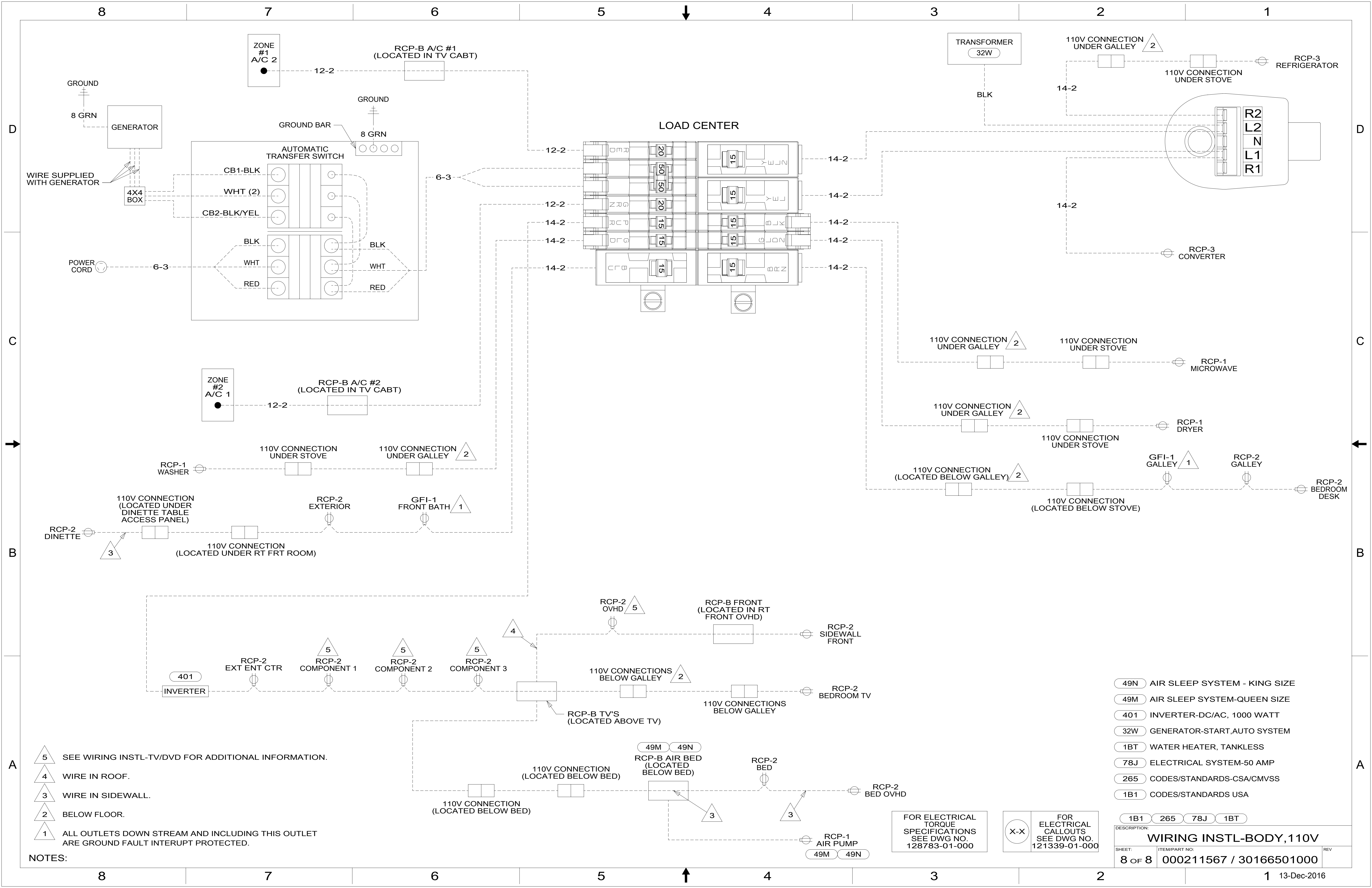
DETAIL FA

- 78J ELECTRICAL SYSTEM-50 AMP
- 265 CODES/STANDARDS-CSA/CMVSS
- 1B1 CODES/STANDARDS USA

FOR ELECTRICAL TORQUE SPECIFICATIONS SEE DWG NO. 128783-01-000

FOR ELECTRICAL CALLOUTS SEE DWG NO. 121339-01-000

DESCRIPTION:	1B1 265 78J	
WIRING INSTL-BODY, 110V		
SHEET:	ITEM/PART NO:	REV
6 OF 8	000211567 / 30166501000	



- NOTES:
- 5 SEE WIRING INSTL-TV/DVD FOR ADDITIONAL INFORMATION.
 - 4 WIRE IN ROOF.
 - 3 WIRE IN SIDEWALL.
 - 2 BELOW FLOOR.
 - 1 ALL OUTLETS DOWN STREAM AND INCLUDING THIS OUTLET ARE GROUND FAULT INTERRUPT PROTECTED.

- 49N AIR SLEEP SYSTEM - KING SIZE
- 49M AIR SLEEP SYSTEM-QUEEN SIZE
- 401 INVERTER-DC/AC, 1000 WATT
- 32W GENERATOR-START,AUTO SYSTEM
- 1BT WATER HEATER, TANKLESS
- 78J ELECTRICAL SYSTEM-50 AMP
- 265 CODES/STANDARDS-CSA/CMVSS
- 1B1 CODES/STANDARDS USA

FOR ELECTRICAL TORQUE SPECIFICATIONS SEE DWG NO. 128783-01-000

FOR ELECTRICAL CALLOUTS SEE DWG NO. 121339-01-000

DESCRIPTION: WIRING INSTL-BODY, 110V		
SHEET: 8 OF 8	ITEM/PART NO: 000211567 / 30166501000	REV