

8 7 6 5 4 3 2 1

D

C

B

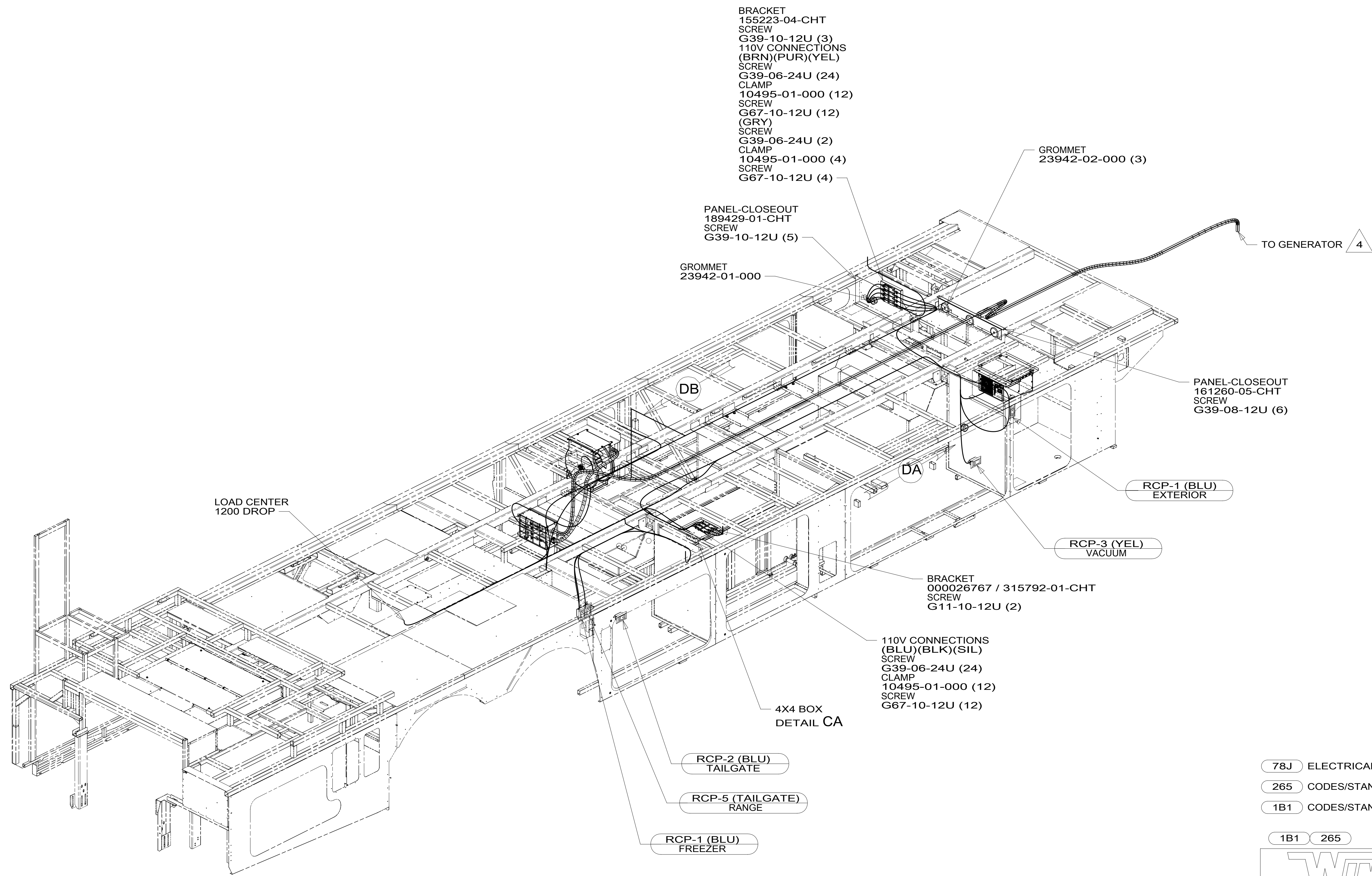
A

D

C

B

A



- BRACKET 155223-04-CHT
- SCREW G39-10-12U (3)
- 110V CONNECTIONS (BRN)(PUR)(YEL) SCREW G39-06-24U (24)
- CLAMP 10495-01-000 (12)
- SCREW G67-10-12U (12) (GRY)
- SCREW G39-06-24U (2)
- CLAMP 10495-01-000 (4)
- SCREW G67-10-12U (4)

GROMMET 23942-02-000 (3)

PANEL-CLOSEOUT 189429-01-CHT SCREW G39-10-12U (5)

GROMMET 23942-01-000

PANEL-CLOSEOUT 161260-05-CHT SCREW G39-08-12U (6)

RCP-1 (BLU) EXTERIOR

RCP-3 (YEL) VACUUM

BRACKET 000026767 / 315792-01-CHT SCREW G11-10-12U (2)

110V CONNECTIONS (BLU)(BLK)(SIL) SCREW G39-06-24U (24)

CLAMP 10495-01-000 (12)

SCREW G67-10-12U (12)

4X4 BOX DETAIL CA

RCP-2 (BLU) TAILGATE

RCP-5 (TAILGATE) RANGE

RCP-1 (BLU) FREEZER

LOAD CENTER 1200 DROP

DB

DA

TO GENERATOR 4

4 SEE GENERATOR INSTL FOR ADDITIONAL INFORMATION.

3. WIRES THAT REST ON WIRE TRAYS ARE TO BE TIED DOWN WITH WIRE TIE 8343-04-000.

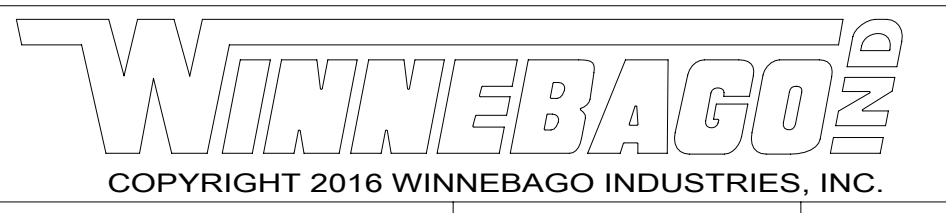
2. CLAMP TO FLOOR SUPPORT TUBES AS NECESSARY WITH CLAMP 10497-01-000.

1. AT MINIMUM ALL WIRES TO BE SUPPORTED AND SECURED PER CODE REQUIREMENTS. USE CLAMP 10495 OR 10497 OR WIRE TIE 8343 OR 108046 AND SCREW G67-XX-XXX OR G56-XX-XXX AS APPROPRIATE FOR INSTALLATION.

NOTES:

- 78J ELECTRICAL SYSTEM-50 AMP
- 265 CODES/STANDARDS-CSA/CMVSS
- 1B1 CODES/STANDARDS USA

1B1 265



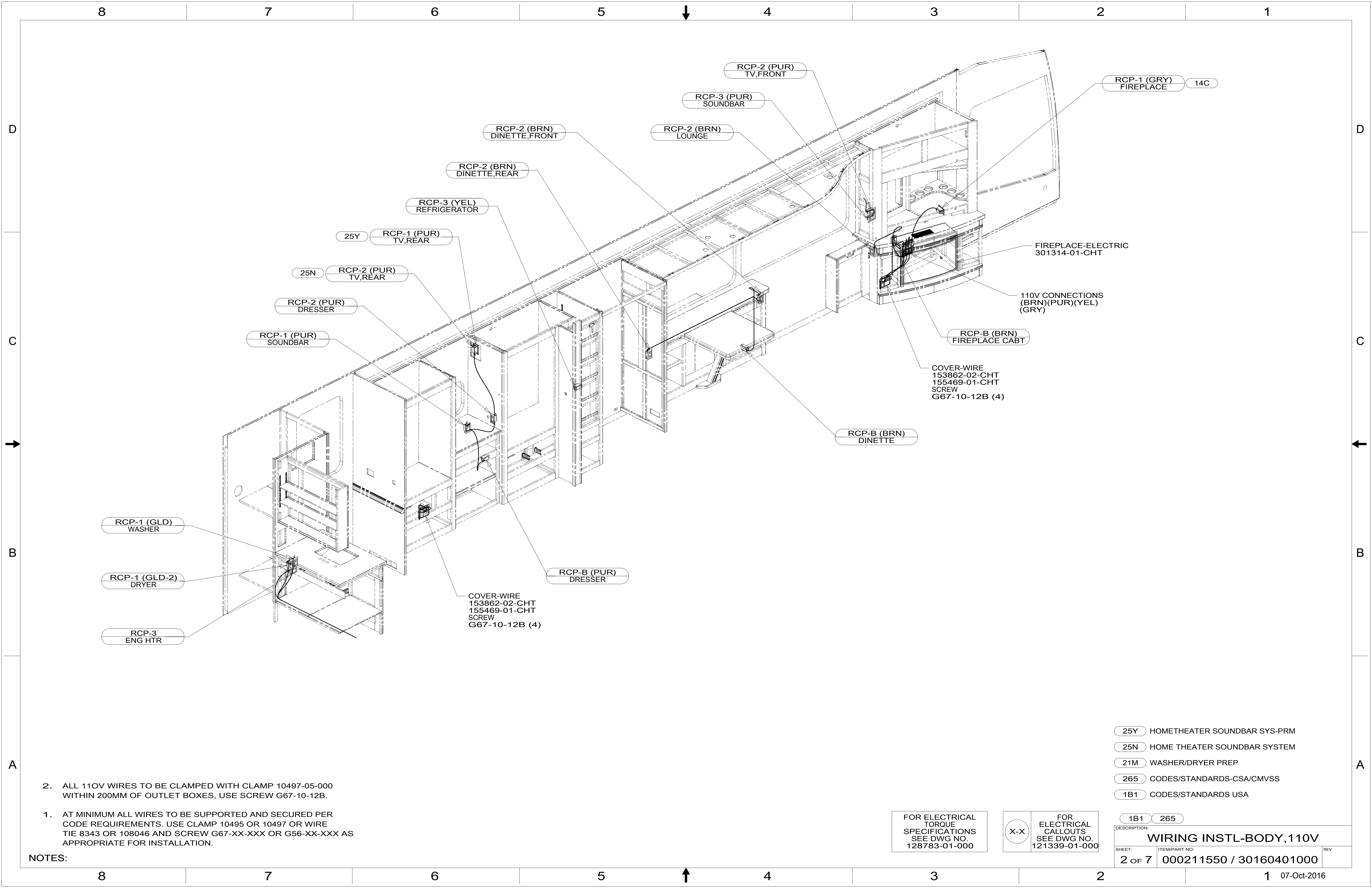
DSNR:		ALL DIMENSIONS ARE IN MILLIMETERS	
DFFR:		MATERIAL:	
UNSPECIFIED TOLERANCES:			
WHOLE DIM (X)	: 3		
ONE-PLACE (X.X)	: 1.5		
TWO-PLACE (X.XX)	: 0.50		
ANGLE	: 1°		
REFER TO ES0018 FOR FASTENER TIGHTENING GUIDELINES		WEIGHT: (LBS)	FIRST USED:
			16 R42QL

FOR ELECTRICAL TORQUE SPECIFICATIONS SEE DWG NO. 128783-01-000

FOR ELECTRICAL CALLOUTS SEE DWG NO. 121339-01-000

DESCRIPTION:		
WIRING INSTL-BODY, 110V		
SHEET:	ITEM/PART NO.:	REV:
1 OF 7	000211550 / 30160401000	
REF:		1 07-Oct-2016

8 7 6 5 4 3 2 1



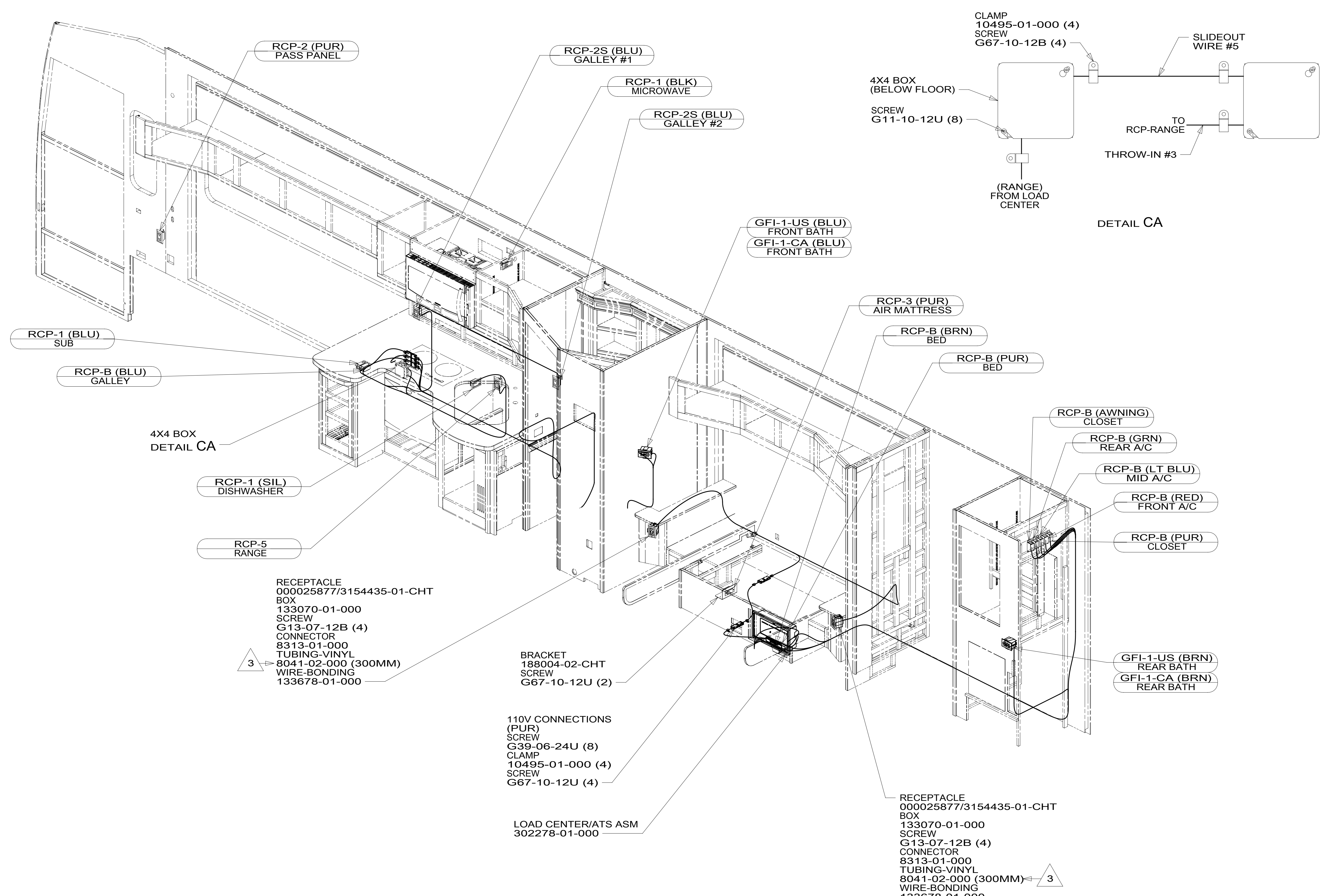
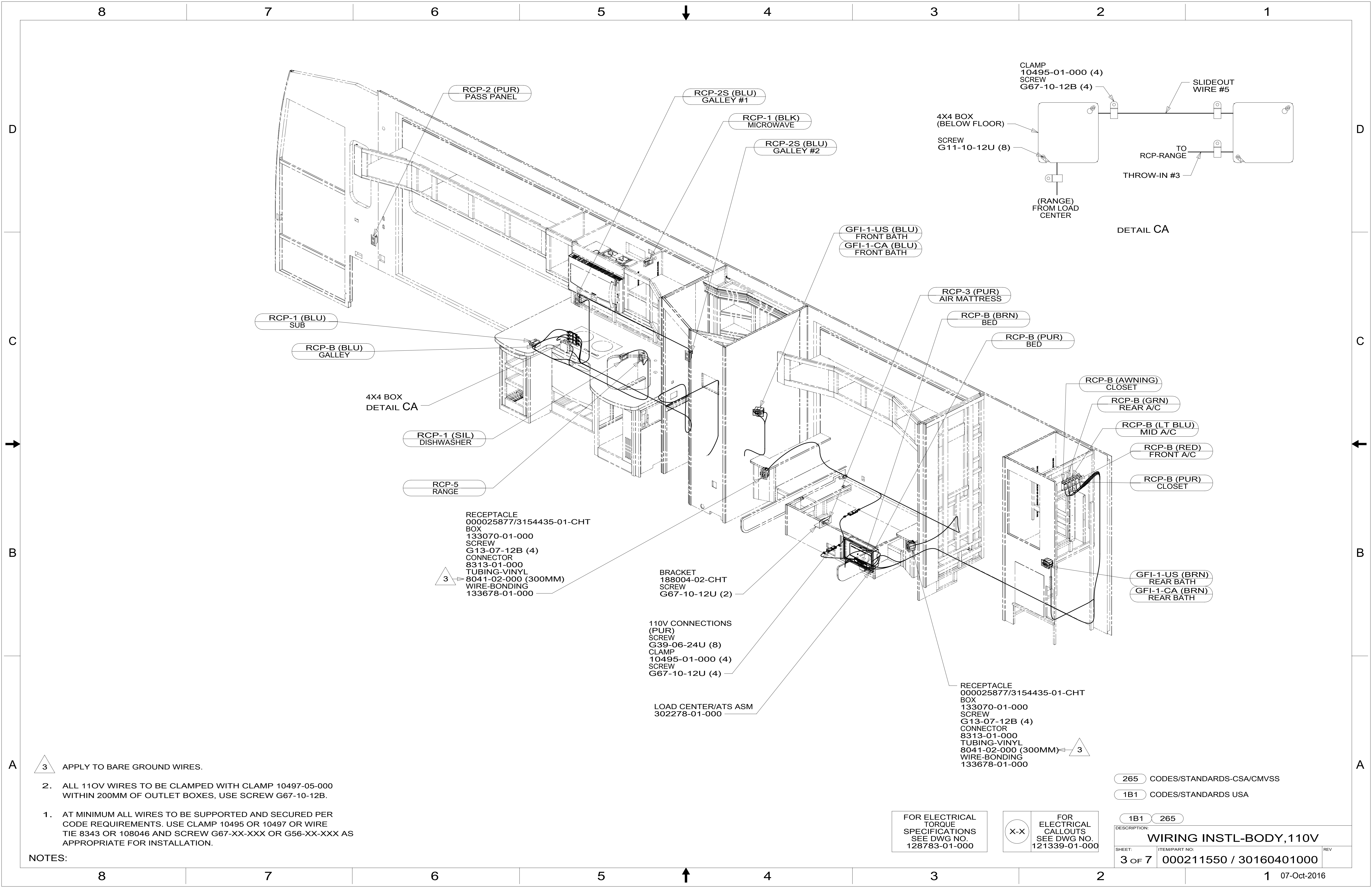
- NOTES:
1. AT MINIMUM ALL WIRES TO BE SUPPORTED AND SECURED PER CODE REQUIREMENTS. USE CLAMP 10495 OR 10497 OR WIRE TIE 8343 OR 108046 AND SCREW G67-XX-XXX OR G56-XX-XXX AS APPROPRIATE FOR INSTALLATION.
 2. ALL 110V WIRES TO BE CLAMPED WITH CLAMP 10497-05-000 WITHIN 200MM OF OUTLET BOXES, USE SCREW G67-10-12B.

FOR ELECTRICAL TORQUE SPECIFICATIONS SEE DWG NO. 128783-01-000

FOR ELECTRICAL CALLOUTS SEE DWG NO. 121339-01-000

- 25Y HOMETHEATER SOUNDBAR SYS-PRM
- 25N HOME THEATER SOUNDBAR SYSTEM
- 21M WASHER/DRYER PREP
- 265 CODES/STANDARDS-CSA/CMVSS
- 1B1 CODES/STANDARDS USA

DESCRIPTION:		1B1 265
WIRING INSTL-BODY, 110V		
SHEET:	ITEM/PART NO.:	REV
2 OF 7	000211550 / 30160401000	



- NOTES:
- AT MINIMUM ALL WIRES TO BE SUPPORTED AND SECURED PER CODE REQUIREMENTS. USE CLAMP 10495 OR 10497 OR WIRE TIE 8343 OR 108046 AND SCREW G67-XX-XXX OR G56-XX-XXX AS APPROPRIATE FOR INSTALLATION.
 - ALL 110V WIRES TO BE CLAMPED WITH CLAMP 10497-05-000 WITHIN 200MM OF OUTLET BOXES, USE SCREW G67-10-12B.
 - APPLY TO BARE GROUND WIRES.

FOR ELECTRICAL TORQUE SPECIFICATIONS SEE DWG NO. 128783-01-000

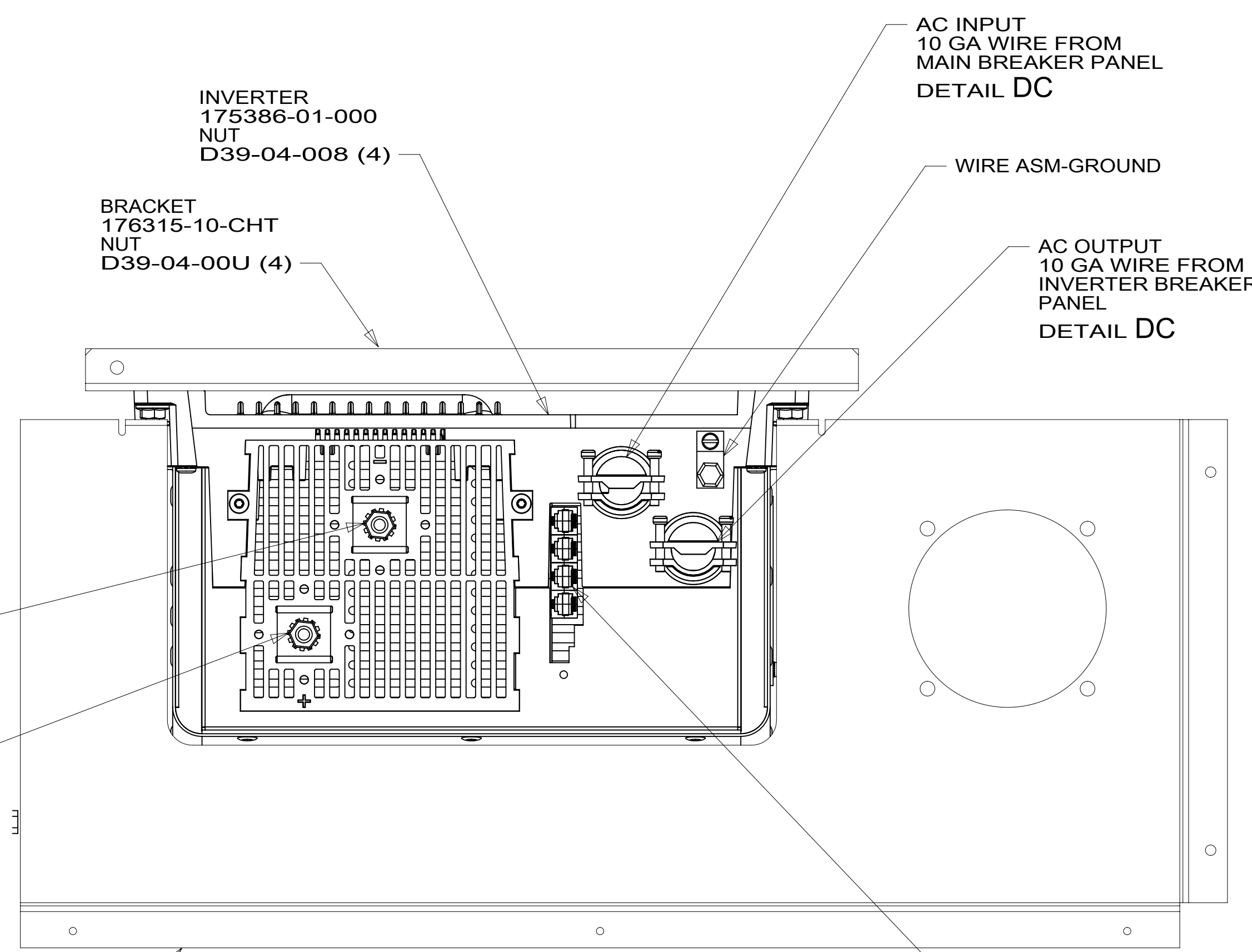
FOR ELECTRICAL CALLOUTS SEE DWG NO. 121339-01-000

265 CODES/STANDARDS-CSA/CMVSS

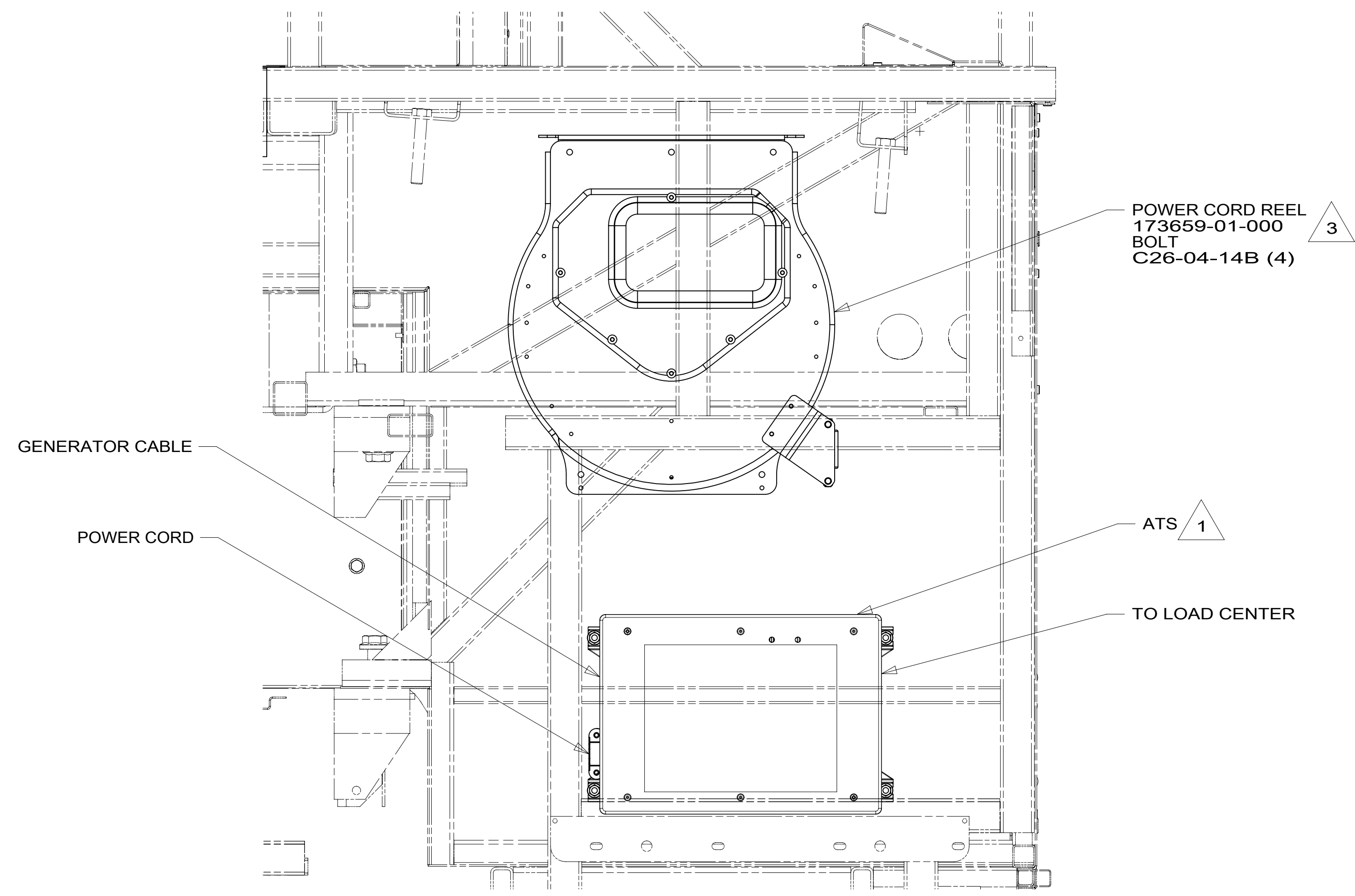
1B1 CODES/STANDARDS USA

DESCRIPTION:	1B1 265	
WIRING INSTL-BODY, 110V		
SHEET:	ITEM/PART NO.:	REV:
3 OF 7	000211550 / 30160401000	

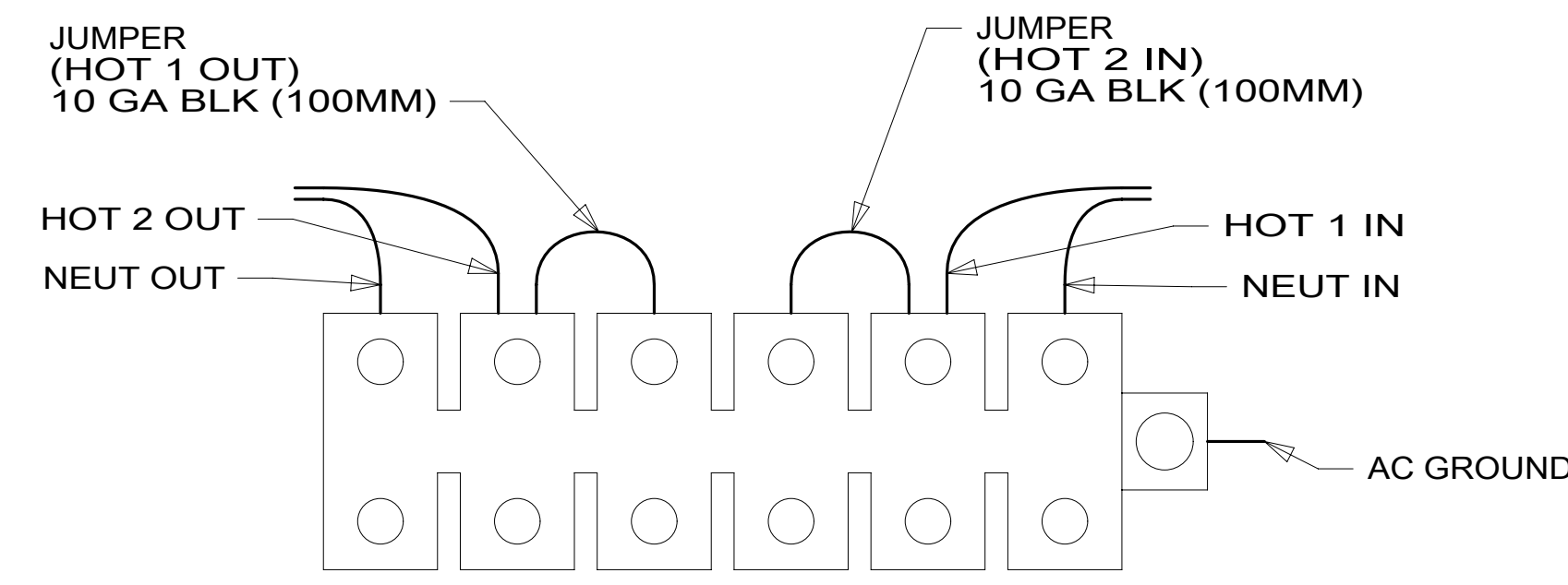
8 7 6 5 4 3 2 1



VIEW DA



VIEW DB



DETAIL DC

- NOTES:
- 4 TORQUE TO 10-12 FT LBS.
 - 3 INSERT BOLT FROM BOTTOM OF COMPARTMENT.
 - 2 SEE BATTERY INSTL FOR ADDITIONAL INFORMATION.
 - 1 SEE LOAD CENTER/ATS ASM FOR ADDITIONAL INFORMATION.

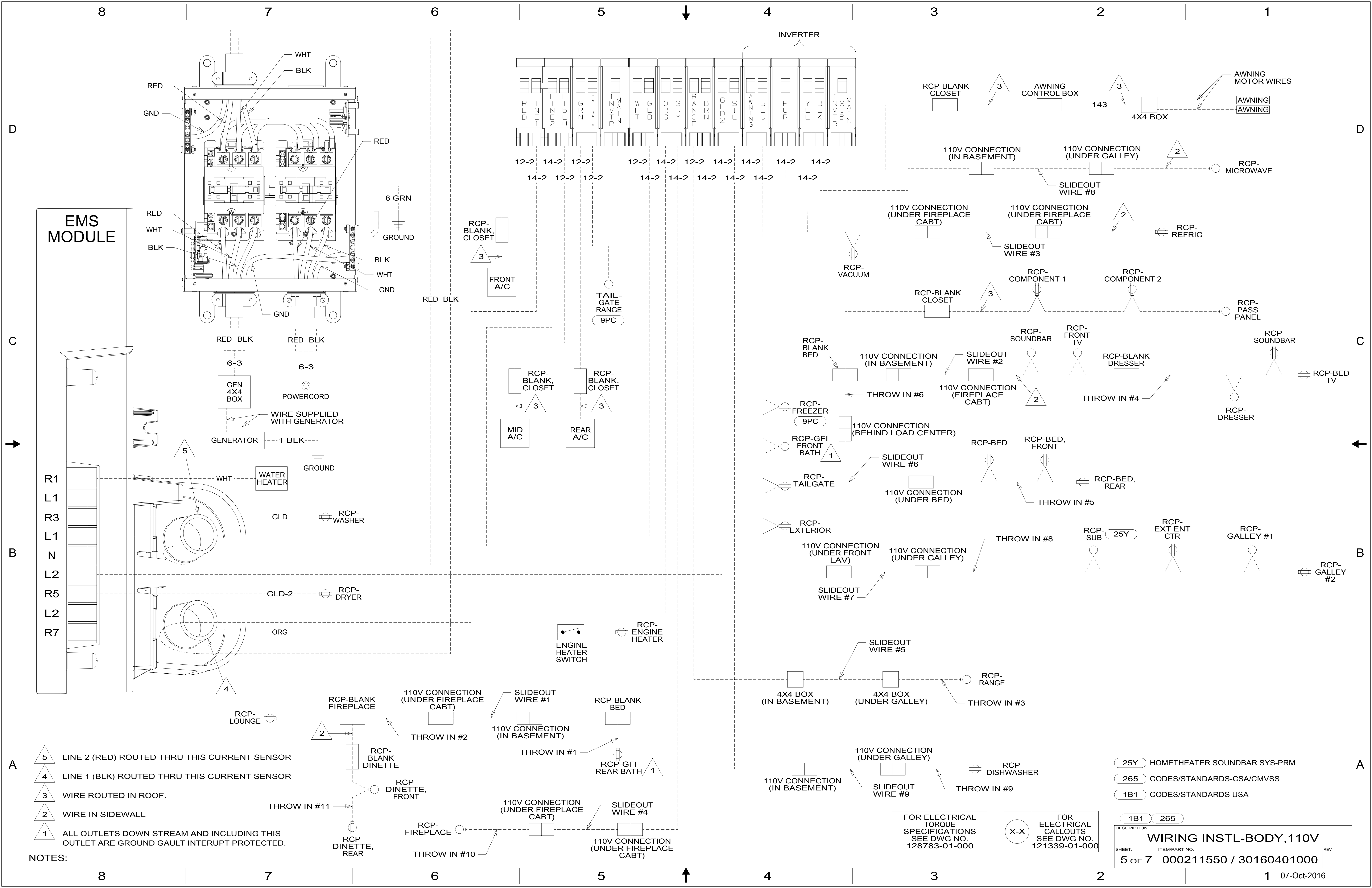
265 CODES/STANDARDS-CSA/CMVSS
1B1 CODES/STANDARDS USA

FOR ELECTRICAL
TORQUE
SPECIFICATIONS
SEE DWG NO.
128783-01-000

FOR
ELECTRICAL
CALLOUTS
SEE DWG NO.
121339-01-000

DESCRIPTION:	
WIRING INSTL-BODY, 110V	
SHEET:	ITEM/PART NO.:
4 OF 7	000211550 / 30160401000
REV	

8 7 6 5 4 3 2 1 07-Oct-2016



EMS
MODULE

INVERTER

- NOTES:
- 5 LINE 2 (RED) ROUTED THRU THIS CURRENT SENSOR
 - 4 LINE 1 (BLK) ROUTED THRU THIS CURRENT SENSOR
 - 3 WIRE ROUTED IN ROOF.
 - 2 WIRE IN SIDEWALL
 - 1 ALL OUTLETS DOWN STREAM AND INCLUDING THIS OUTLET ARE GROUND GAULT INTERRUPT PROTECTED.

FOR ELECTRICAL TORQUE SPECIFICATIONS SEE DWG NO. 128783-01-000

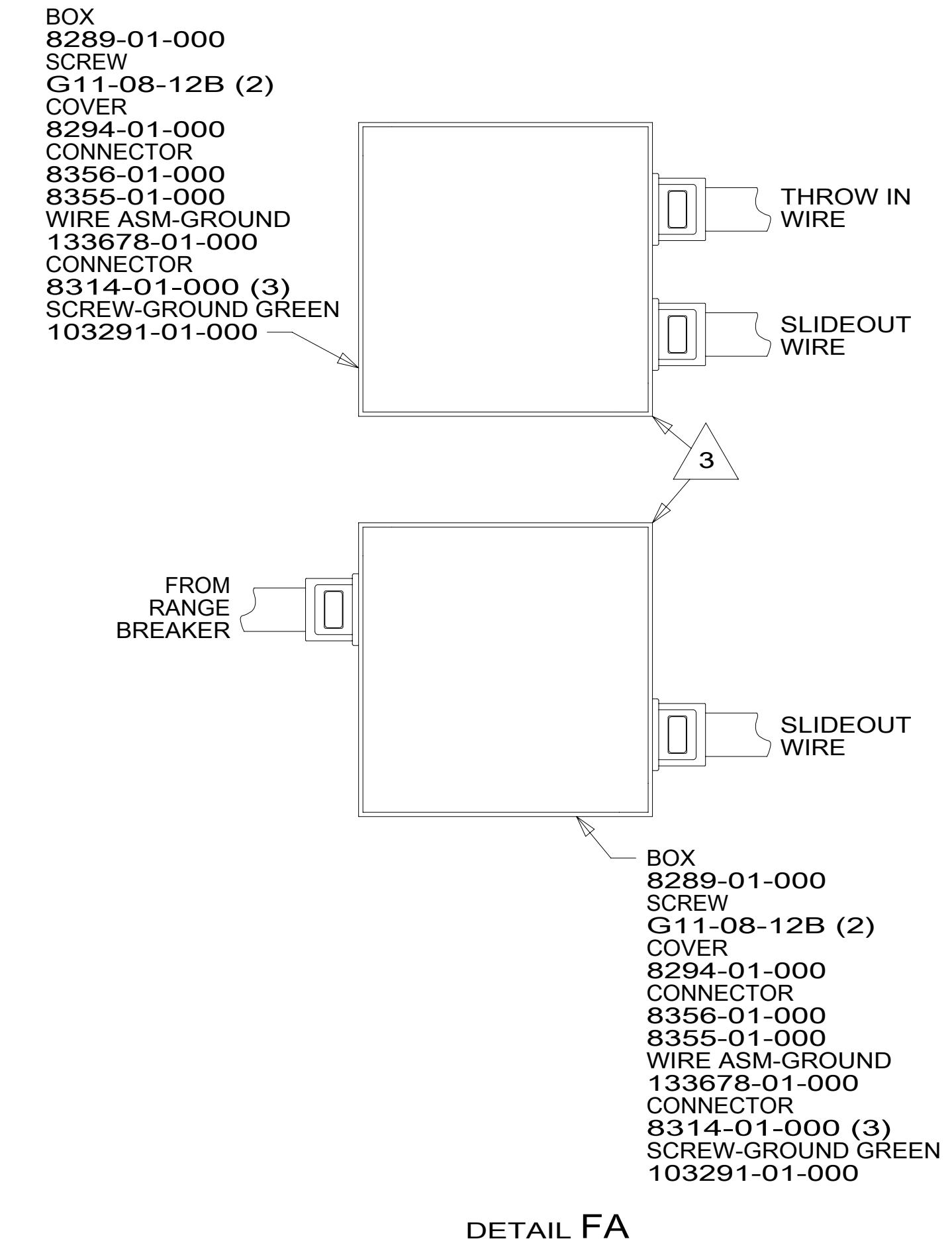
FOR ELECTRICAL CALLOUTS SEE DWG NO. 121339-01-000

- 25Y HOMETHEATER SOUNDBAR SYS-PRM
- 265 CODES/STANDARDS-CSA/CMVSS
- 1B1 CODES/STANDARDS USA

DESCRIPTION:		WIRING INSTL-BODY, 110V	
SHEET:	ITEM/PART NO.:	REV	
5 OF 7	000211550 / 30160401000		

		R42QL
RED	1B1	136135-07-071
	265	136136-07-071
MAIN	1B1	174031-01-062
	265	174031-01-062
GRN	1B1	136135-08-071
	265	136136-08-071
LT BLU	1B1	136135-21-071
	265	136136-21-071
INVERTER CHARGER MAIN	1B1	136137-01-087
	265	136138-01-087
YEL	1B1	136131-05-131 ¹
	265	136134-05-131 ¹
GLD	1B1	136131-10-070
	265	136134-10-070
GLD-2	1B1	136131-20-070
	265	136134-20-070
WHT	1B1	136135-09-067
	265	136136-09-067
RANGE	1B1	136135-01-056 ²
	265	136136-01-056 ²
AWNING	1B1	136131-01-072
	265	136134-01-072

		R42QL
INVERTER CHARGER SUB MAIN	1B1	136137-01-087
	265	136138-01-087
BLU	1B1	136131-02-224 ¹
	265	136134-02-224 ¹
BRN	1B1	136131-03-098 ¹
	265	136134-03-098 ¹
PUR	1B1	136131-04-095 ¹
	265	136134-04-095 ¹
ORG	1B1	136131-16-070
	265	136134-16-070
BLK	1B1	136131-06-056 ¹
	265	136134-06-056 ¹
SIL	1B1	136131-11-056 ¹
	265	136134-11-056 ¹
GRY	1B1	136131-15-092 ¹
	265	136134-15-092 ¹
GROUND MAIN		136145-01-065
GROUND ATS		136145-01-020
GROUND INVERTER		136145-04-006
CABLE ASM GEN		174031-03-095
TAILGATE	1B1	136135-01-045
	265	136136-01-045



³ CONNECT WIRES, WHT TO WHT, BLK TO BLK, GROUNDS TO GROUNDS, KEEPING CIRCUITS SEPERATED.

² SEE DETAIL FA FOR CONNECTOR INSTALLATION.

¹ SEE DETAIL GA FOR CONNECTOR INSTALLATION.

NOTES:

FOR ELECTRICAL TORQUE SPECIFICATIONS SEE DWG NO. 128783-01-000

FOR ELECTRICAL CALLOUTS SEE DWG NO. 121339-01-000

265 CODES/STANDARDS-CSA/CMVSS
 1B1 CODES/STANDARDS USA

1B1 265

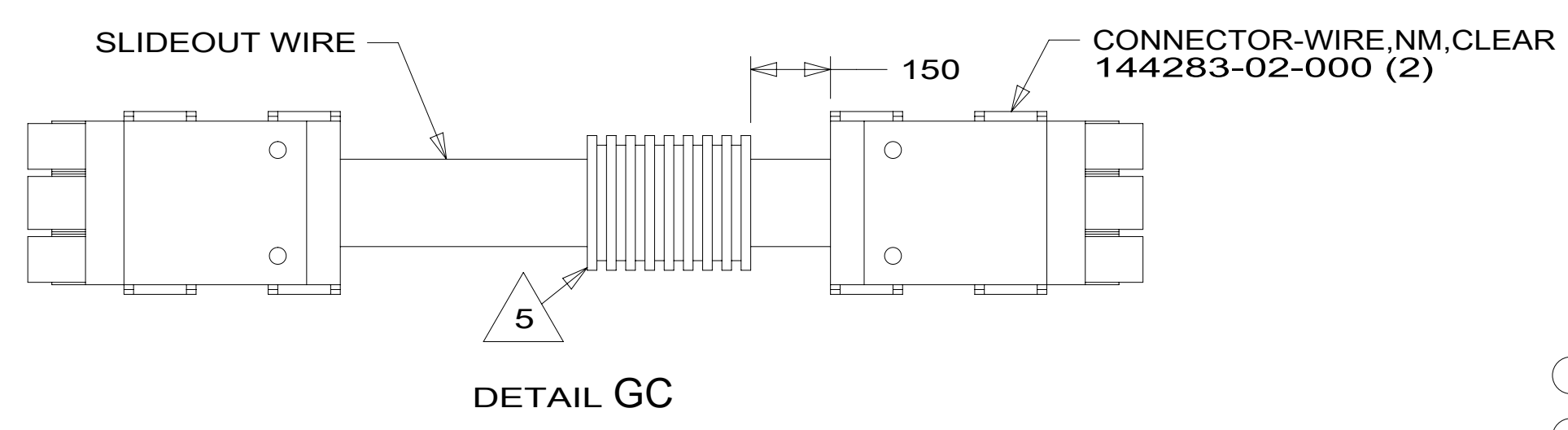
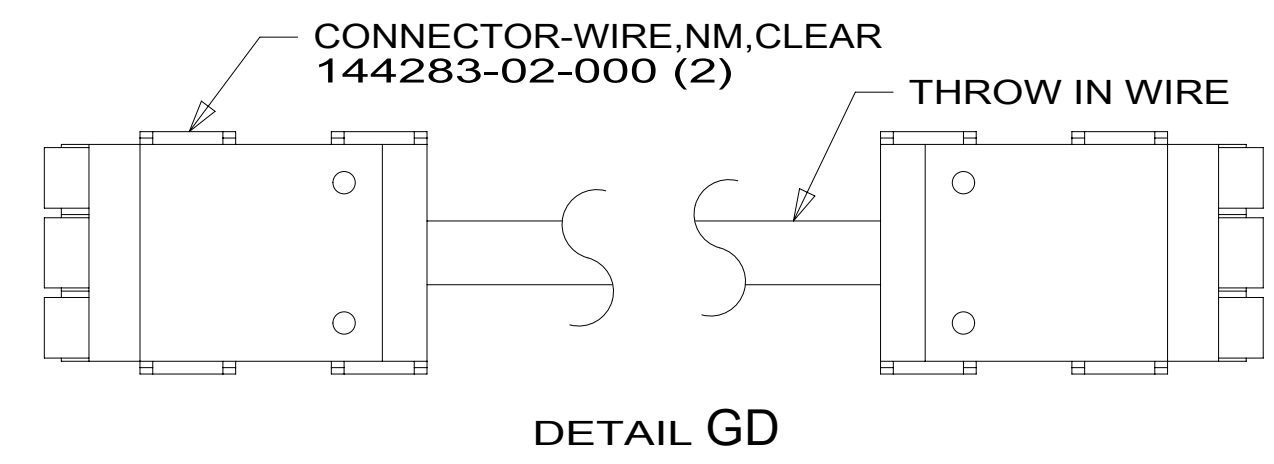
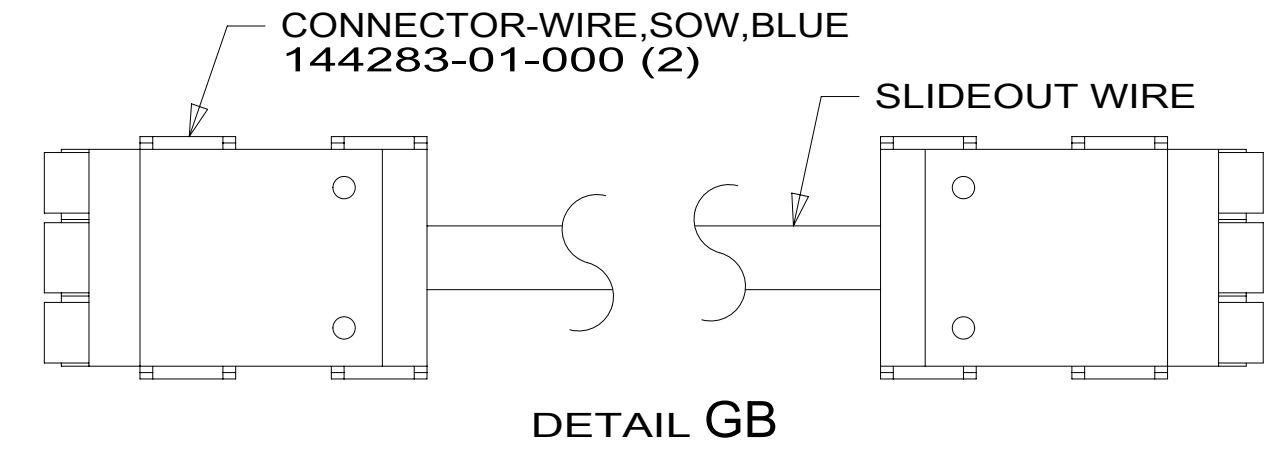
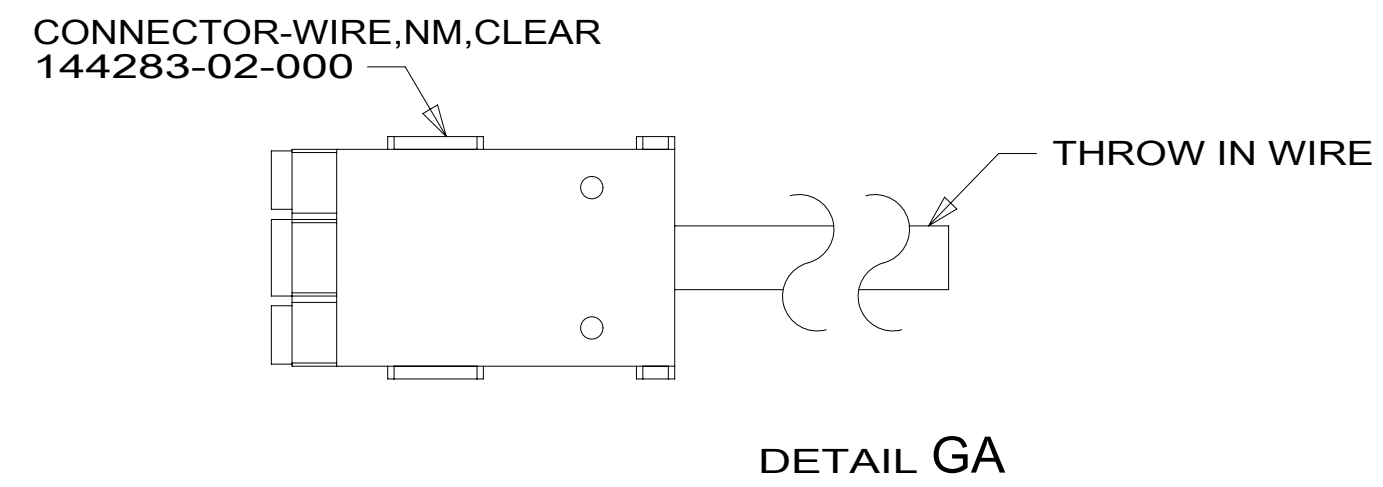
DESCRIPTION:
WIRING INSTL-BODY, 110V

SHEET: 6 OF 7 ITEM/PART NO: 000211550 / 30160401000 REV

07-Oct-2016

		R42QL	
SLIDEOUT WIRE #1		136151-03-025	4
SLIDEOUT WIRE #2		136151-04-025	4
SLIDEOUT WIRE #3		136151-05-025	4
SLIDEOUT WIRE #4		136151-15-025	4
SLIDEOUT WIRE #5		136152-01-042	3
SLIDEOUT WIRE #6		136151-04-022	2
SLIDEOUT WIRE #7		136151-02-070	2
SLIDEOUT WIRE #8		136151-06-070	2
SLIDEOUT WIRE #9		136151-11-070	2
THROW IN WIRE #1	1B1	136131-03-052	
	265	136134-03-052	
THROW IN WIRE #2	1B1	136131-03-032	1
	265	136134-03-032	1
THROW IN WIRE #3	1B1	136135-01-017	3
	265	136136-01-017	3

		R42QL	
THROW IN WIRE #4	1B1	136131-04-030	
	265	136134-04-030	
THROW IN WIRE #5	1B1	136131-04-068	1
	265	136134-04-068	1
THROW IN WIRE #6	1B1	136131-04-070	1
	265	136134-04-070	1
THROW IN WIRE #7			
THROW IN WIRE #8	1B1	136131-02-049	1
	265	136134-02-049	1
THROW IN WIRE #9	1B1	136131-11-025	1
	265	136134-11-025	1
THROW IN WIRE #10	1B1	136131-15-008	
	265	136134-15-008	
THROW IN WIRE #11	1B1	136131-03-035	
	265	136134-03-035	



- NOTES:
- 5 APPLY 300MM OF CONDUIT-CONVOLUTE 41953-05-000 OVER WIRE AT DIMENSION SHOWN AND SECURE BOTH ENDS OF TUBING TO WIRE WITH TAPE 8363-01-000.
 - 4 SEE DETAIL GC FOR CONNECTOR INSTALLATION.
 - 3 SEE DETAIL GD FOR CONNECTOR INSTALLATION.
 - 2 SEE DETAIL GB FOR CONNECTOR INSTALLATION.
 - 1 SEE DETAIL GA FOR CONNECTOR INSTALLATION.

- 214 DISHWASHER DRAWER STYLE
- 265 CODES/STANDARDS-CSA/CMVSS
- 1B1 CODES/STANDARDS USA

FOR ELECTRICAL TORQUE SPECIFICATIONS SEE DWG NO. 128783-01-000

FOR ELECTRICAL CALLOUTS SEE DWG NO. 121339-01-000

DESCRIPTION:		1B1 265
WIRING INSTL-BODY, 110V		
SHEET:	ITEM/PART NO.:	REV:
7 OF 7	000211550 / 30160401000	