

- △ 7 WIRE IN SIDEWALL.
 - △ 6 ROUTE ENGINE HEATER POWER CORD THROUGH GROMMET.
 - △ 5 SEE LOAD CENTER/ATS ASM FOR ADDITIONAL INFORMATION.
 - △ 4 SEE GENERATOR INSTL FOR ADDITIONAL INFORMATION.
3. WIRES THAT REST ON WIRE TRAYS ARE TO BE TIED DOWN WITH WIRE TIE 8343-04-000.
 2. CLAMP TO FLOOR SUPPORT TUBES AS NECESSARY WITH CLAMP 10497-01-000.
 1. ALL WIRES TO BE SECURED WITH CLAMP 10495 OR 10497 OR WIRE TIE 8343 OR 108046 EVERY 600 MM. USE SCREW G67-XX-XXX OR G56-XX-XXX AS APPROPRIATE FOR INSTALLATION.

NOTES:

- 1DF EXT TV ENTERTAINMENT CENTER
- 14C FIREPLACE-ELECTRIC
- 78J ELECTRICAL SYSTEM-50 AMP
- 265 CODES/STANDARDS-CSA/CMVSS
- 1B1 CODES/STANDARDS USA

1B1 265



DSNR:		ALL DIMENSIONS ARE IN MILLIMETERS	
DIFTR:			
UNSPECIFIED TOLERANCES:		MATERIAL:	
WHOLE DIM (X)	± 3		
ONE-PLACE (X.X)	± 1.5		
TWO-PLACE (X.XX)	± 0.50		
ANGLE	± 1°		

REFER TO ES0018 FOR FASTENER TIGHTENING GUIDELINES

WEIGHT: (LBS) FIRST USED:

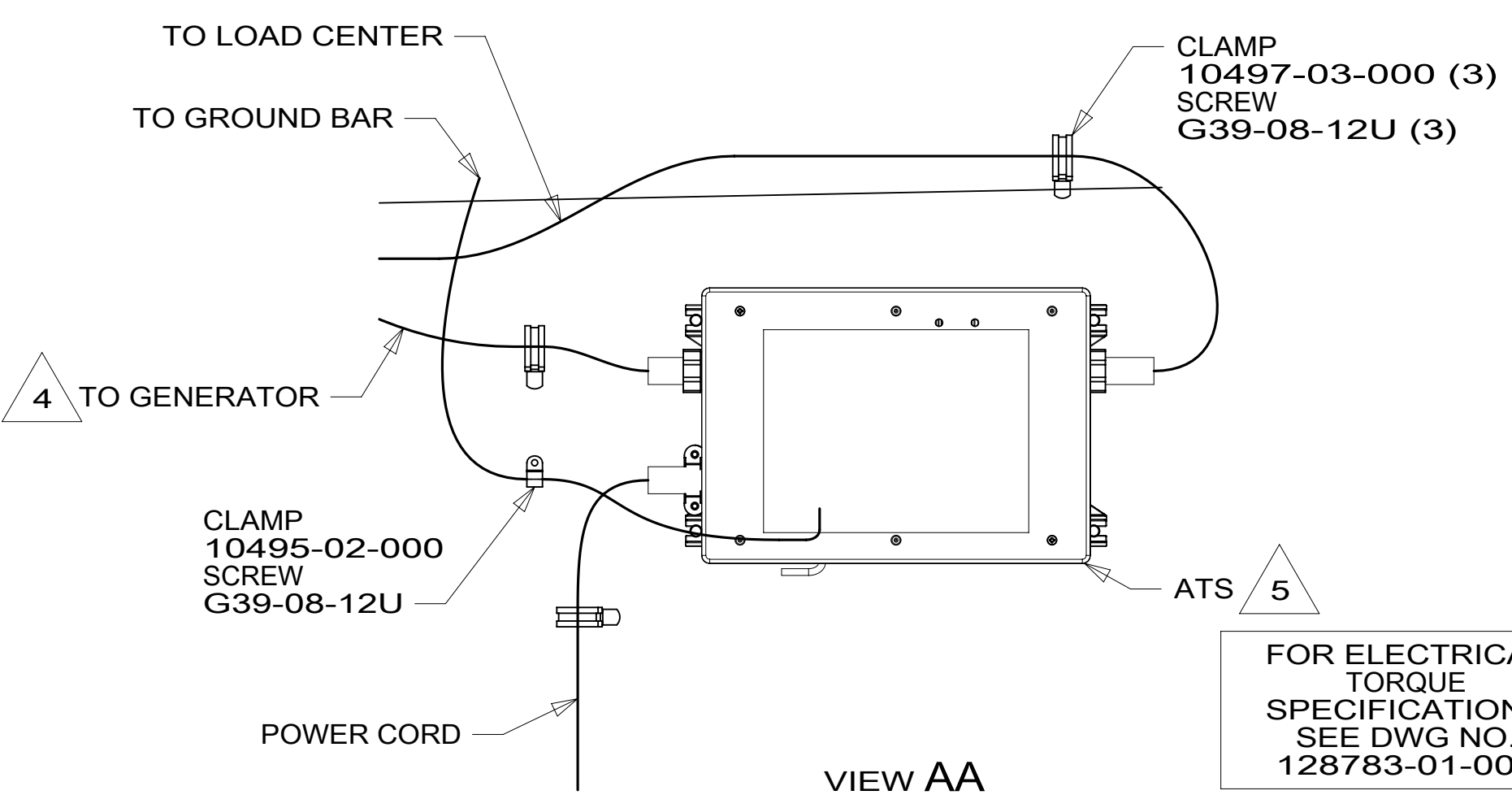
17 L38W

WIRING INSTL-BODY, 110V

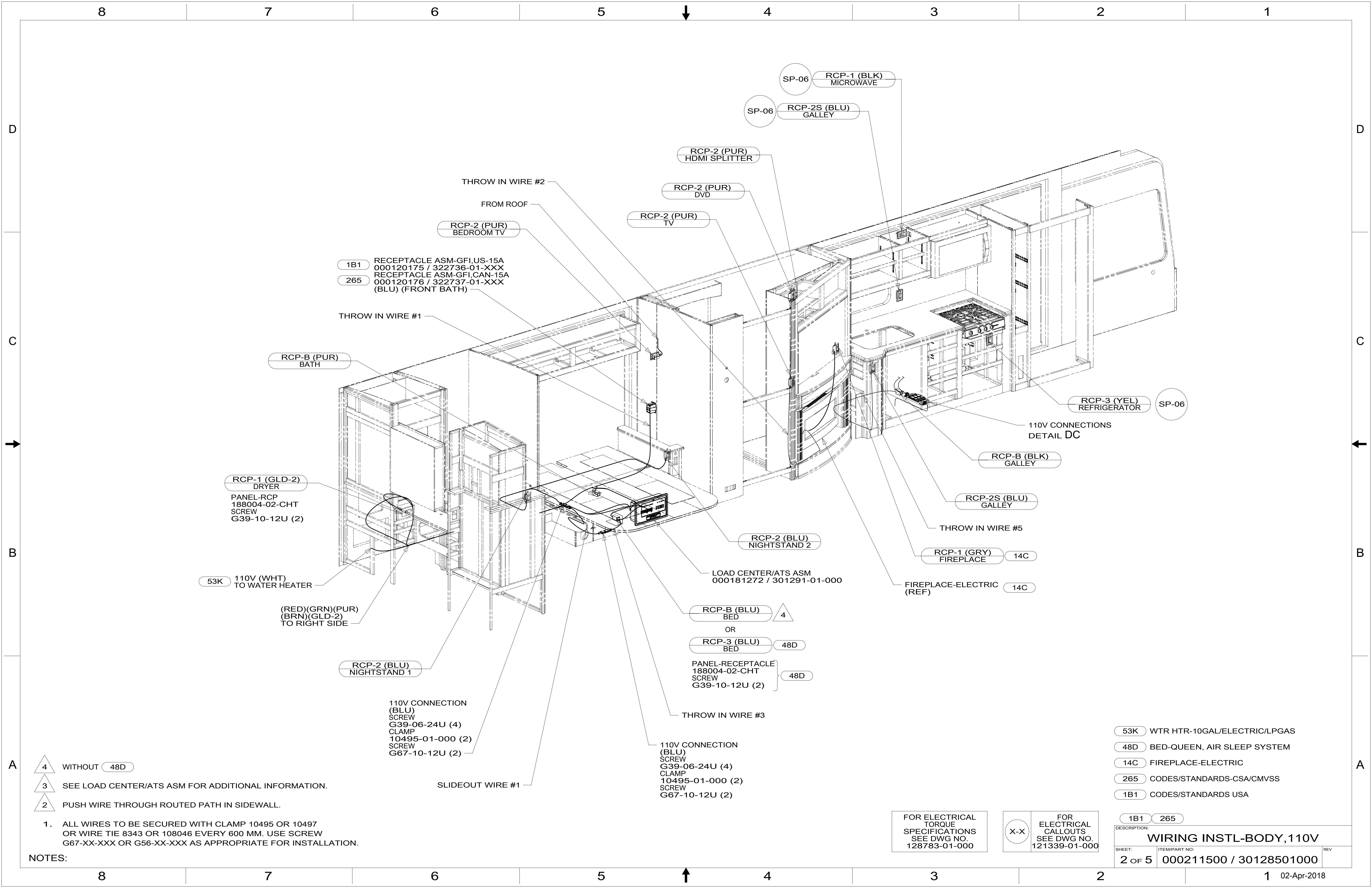
SHEET: **1 OF 5** ITEM/PART NO: **000211500 / 30128501000** REF: **1** REV: **02-Apr-2018**

FOR ELECTRICAL TORQUE SPECIFICATIONS SEE DWG NO. 128783-01-000

FOR ELECTRICAL CALLOUTS SEE DWG NO. 121339-01-000



VIEW AA



1B1 RECEPTACLE ASM-GFI,US-15A
000120175 / 322736-01-XXX
265 RECEPTACLE ASM-GFI,CAN-15A
000120176 / 322737-01-XXX
(BLU) (FRONT BATH)

RCP-1 (GLD-2) DRYER
PANEL-RCP
188004-02-CHT
SCREW
G39-10-12U (2)

53K 110V (WHT)
TO WATER HEATER

(RED)(GRN)(PUR)
(BRN)(GLD-2)
TO RIGHT SIDE

RCP-2 (BLU)
NIGHTSTAND 1

110V CONNECTION
(BLU)
SCREW
G39-06-24U (4)
CLAMP
10495-01-000 (2)
SCREW
G67-10-12U (2)

SLIDEOUT WIRE #1

RCP-2 (PUR)
DVD

RCP-2 (PUR)
TV

RCP-2 (PUR)
HDMI SPLITTER

RCP-2 (BLU)
NIGHTSTAND 2

RCP-B (BLU)
BED

OR
RCP-3 (BLU)
BED

PANEL-RECEPTACLE
188004-02-CHT
SCREW
G39-10-12U (2)

THROW IN WIRE #3

110V CONNECTION
(BLU)
SCREW
G39-06-24U (4)
CLAMP
10495-01-000 (2)
SCREW
G67-10-12U (2)

SP-06 RCP-1 (BLK)
MICROWAVE

SP-06 RCP-2S (BLU)
GALLEY

RCP-3 (YEL)
REFRIGERATOR

110V CONNECTIONS
DETAIL DC

RCP-B (BLK)
GALLEY

RCP-2S (BLU)
GALLEY

RCP-1 (GRY)
FIREPLACE

FIREPLACE-ELECTRIC
(REF)

14C

14C

FOR ELECTRICAL
TORQUE
SPECIFICATIONS
SEE DWG NO.
128783-01-000

FOR ELECTRICAL
CALLOUTS
SEE DWG NO.
121339-01-000

- 53K WTR HTR-10GAL/ELECTRIC/LPGAS
- 48D BED-QUEEN, AIR SLEEP SYSTEM
- 14C FIREPLACE-ELECTRIC
- 265 CODES/STANDARDS-CSA/CMVSS
- 1B1 CODES/STANDARDS USA

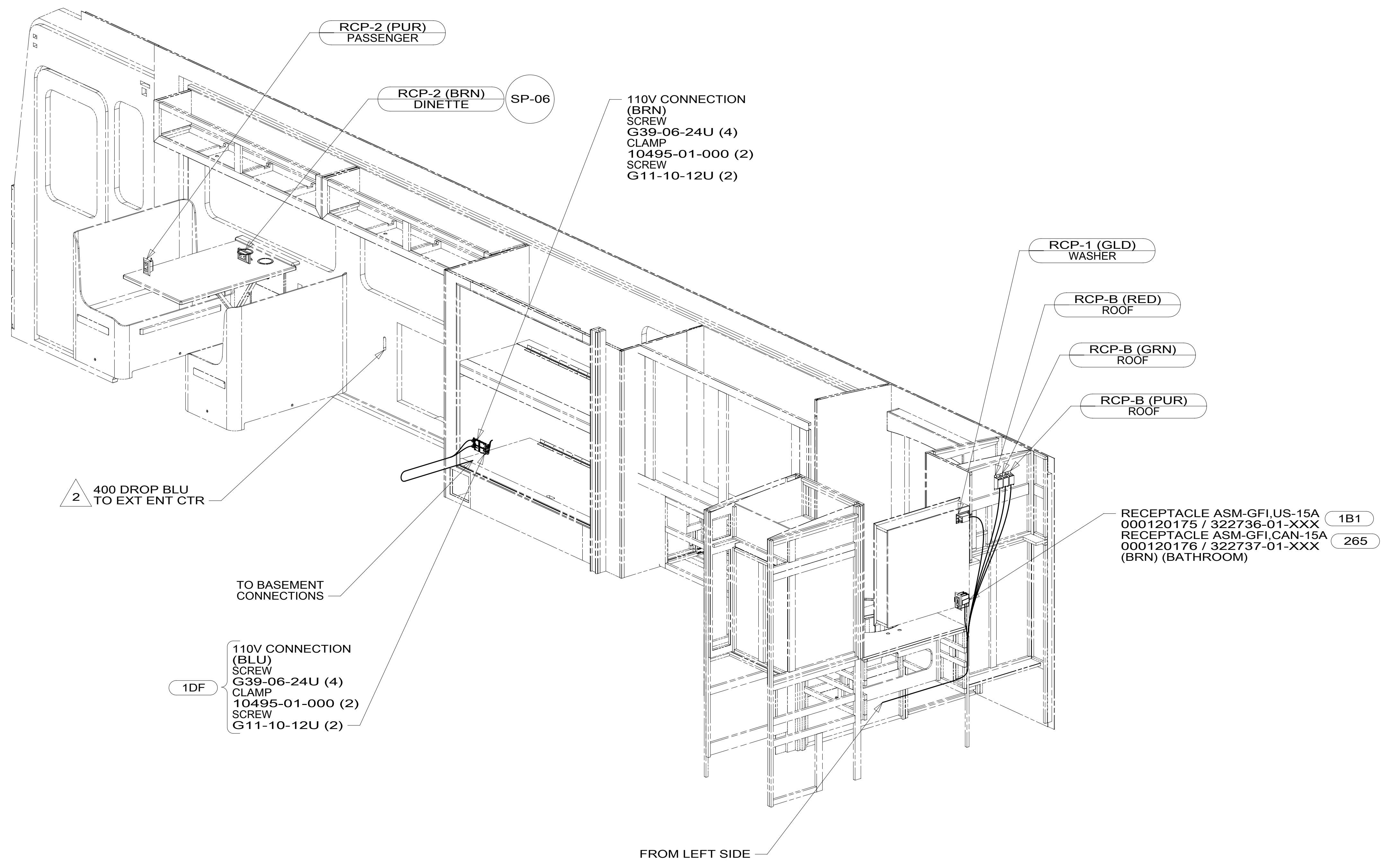
DESCRIPTION: WIRING INSTL-BODY, 110V		REV
SHEET: 2 OF 5	ITEM/PART NO: 000211500 / 30128501000	

- 4 WITHOUT 48D
- 3 SEE LOAD CENTER/ATS ASM FOR ADDITIONAL INFORMATION.
- 2 PUSH WIRE THROUGH ROUTED PATH IN SIDEWALL.

NOTES:
1. ALL WIRES TO BE SECURED WITH CLAMP 10495 OR 10497
OR WIRE TIE 8343 OR 108046 EVERY 600 MM. USE SCREW
G67-XX-XXX OR G56-XX-XXX AS APPROPRIATE FOR INSTALLATION.

8 7 6 5 4 3 2 1

D
C
B
A



2 SEE ENTERTAINMENT CTR COMPL-TV FOR ADDITIONAL INFORMATION.

1. ALL WIRES TO BE SECURED WITH CLAMP 10495 OR 10497 OR WIRE TIE 8343 OR 108046 EVERY 600 MM. USE SCREW G67-XX-XXX OR G56-XX-XXX AS APPROPRIATE FOR INSTALLATION.

NOTES:

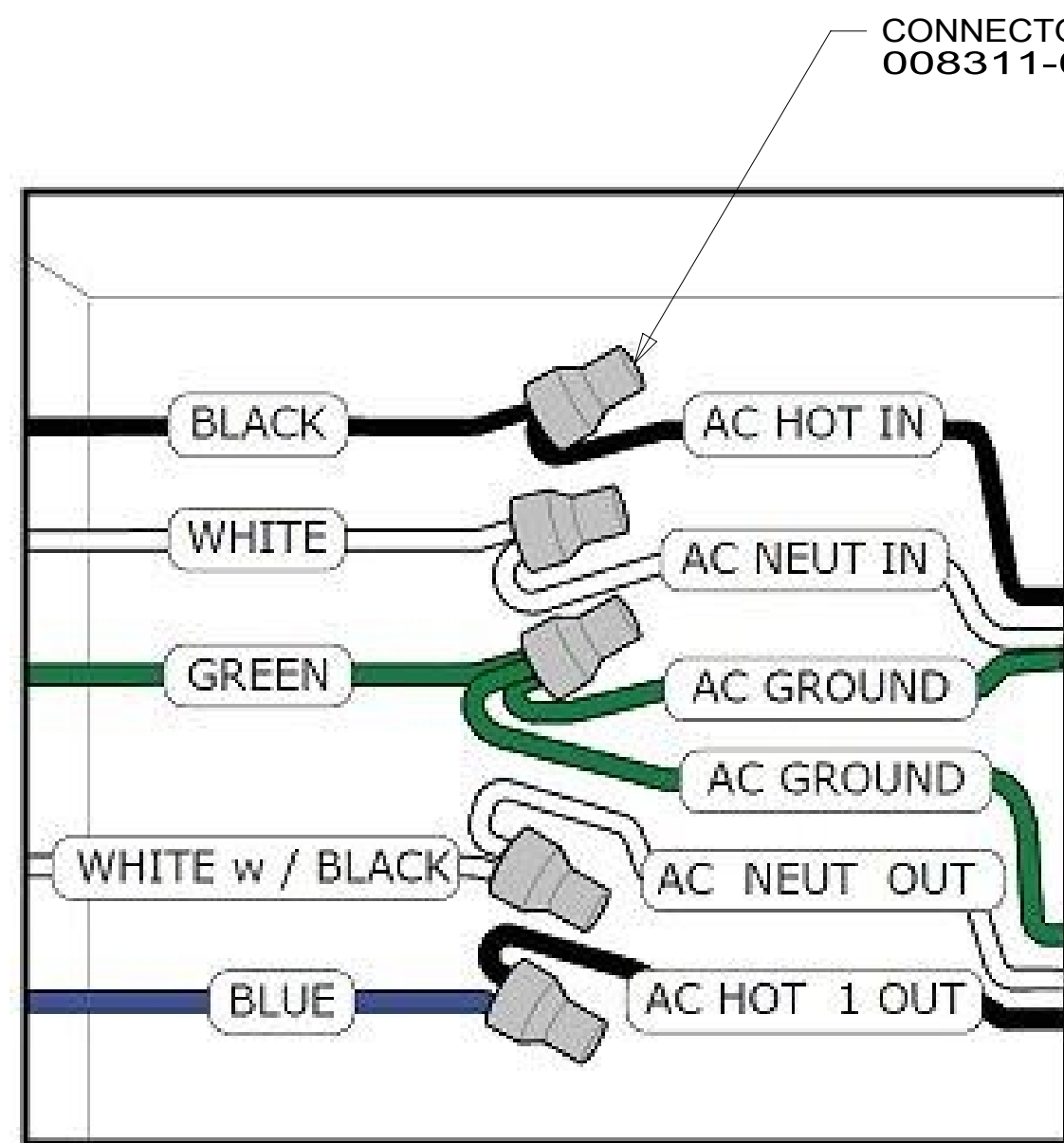
FOR ELECTRICAL TORQUE SPECIFICATIONS SEE DWG NO. 128783-01-000

FOR ELECTRICAL CALLOUTS SEE DWG NO. 121339-01-000

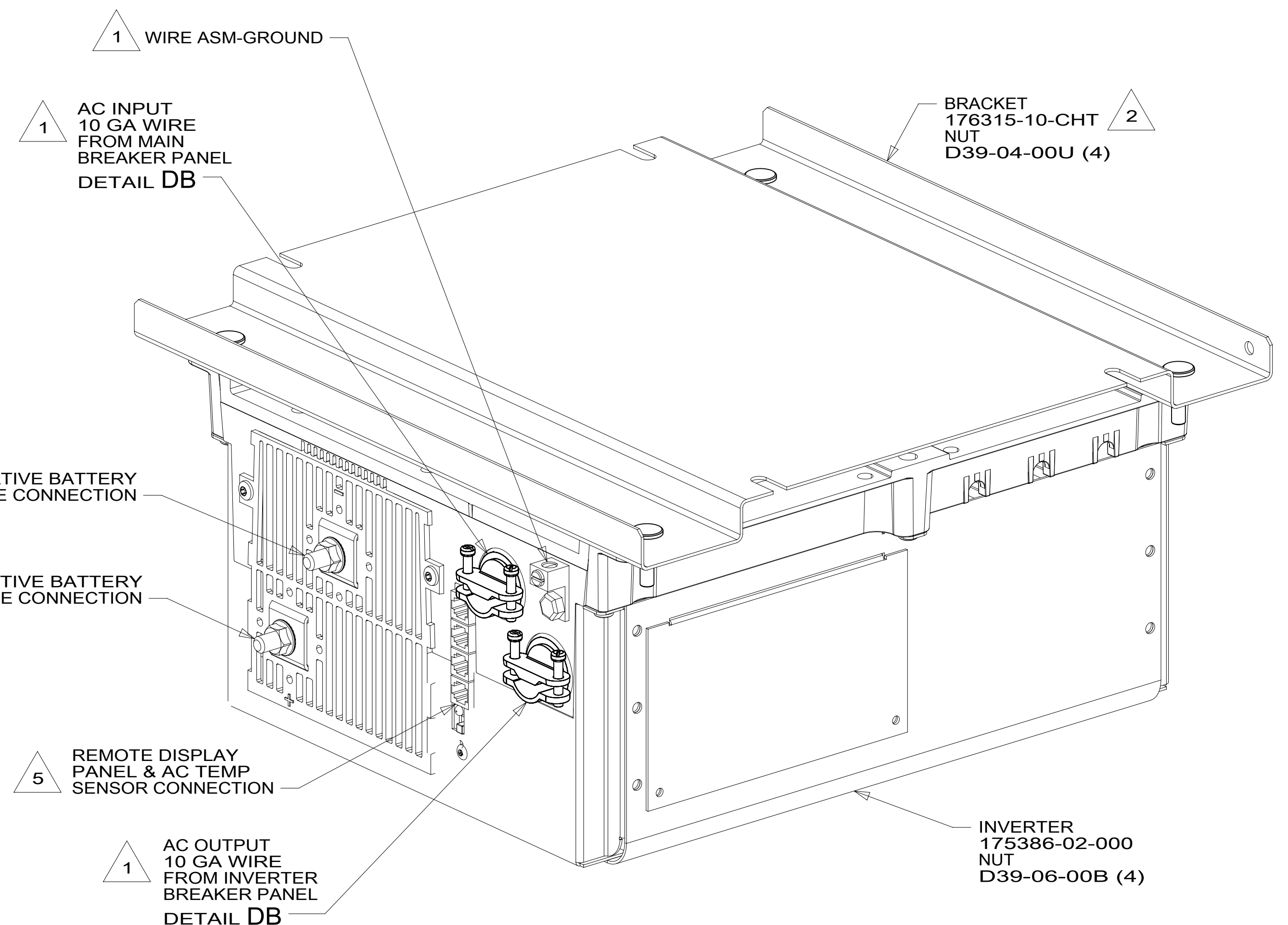
- 1DF EXT TV ENTERTAINMENT CENTER
- 14C FIREPLACE-ELECTRIC
- 265 CODES/STANDARDS-CSA/CMVSS
- 1B1 CODES/STANDARDS USA

DESCRIPTION:	
WIRING INSTL-BODY, 110V	
SHEET:	ITEM/PART NO. REV
3 OF 5	000211500 / 30128501000

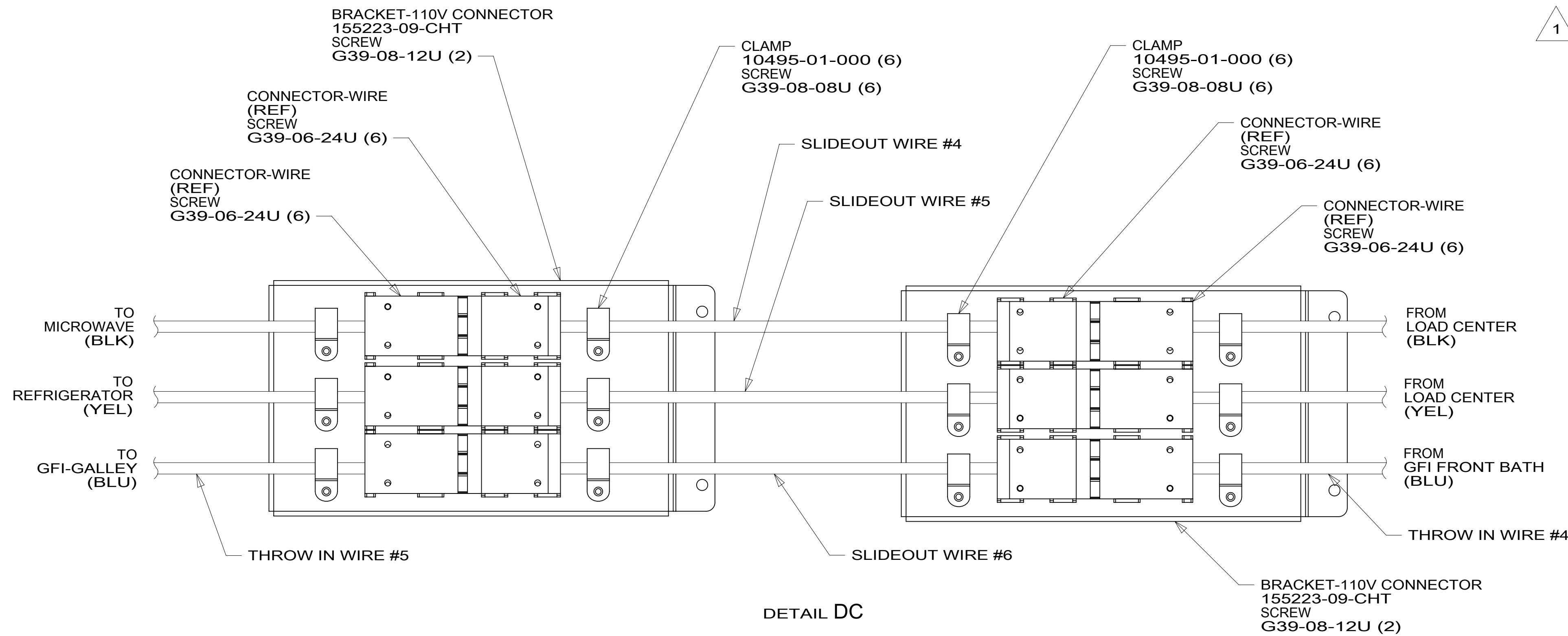
8 7 6 5 4 3 2 1 02-Apr-2018



DETAIL DB



DETAIL DA



DETAIL DC

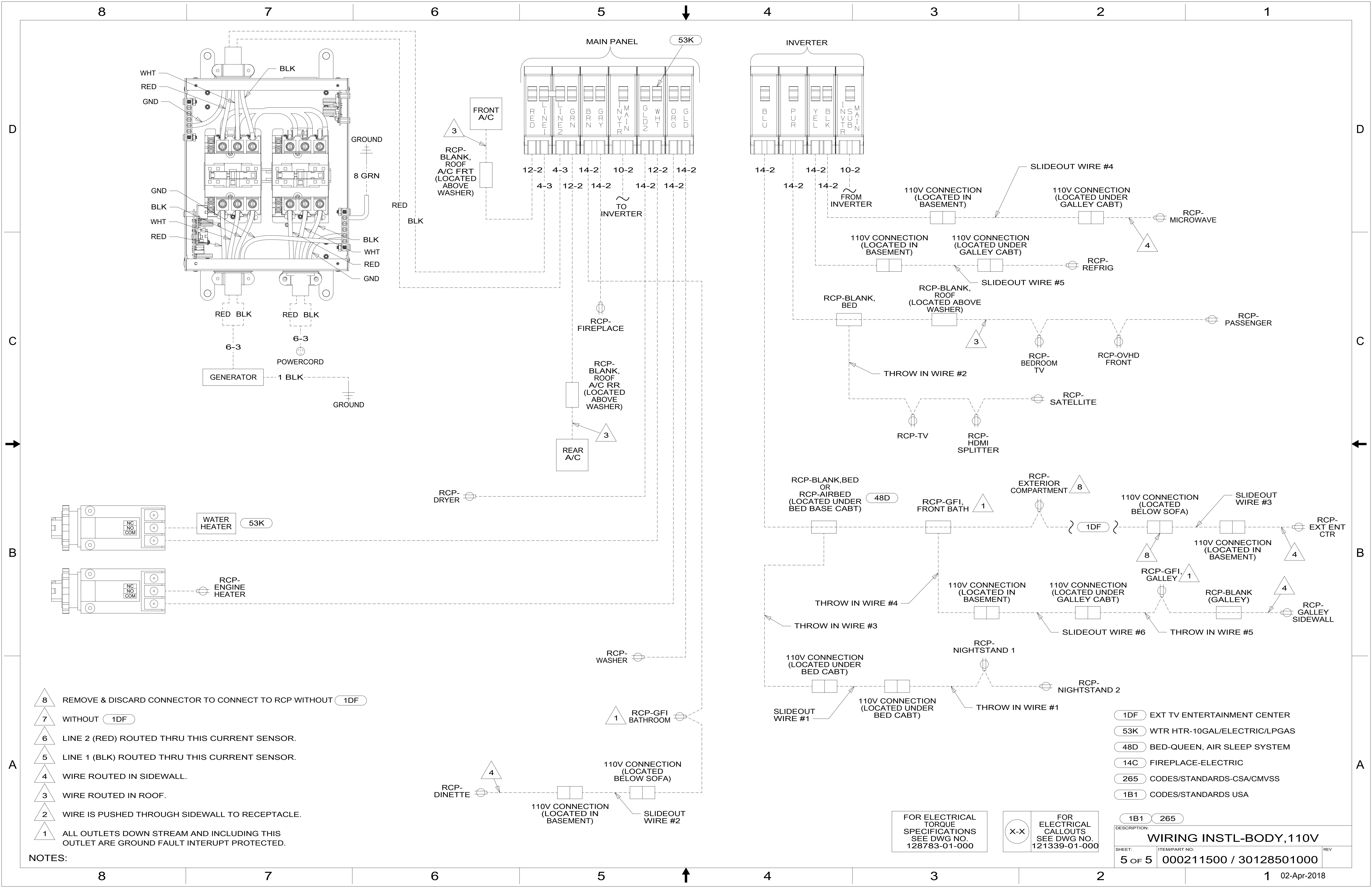
- NOTES:
- 6 DO NOT USE POWER/AIR TOOL TO INSTALL NUT. TORQUE TO 10-12 FT LBS. DO NOT USE A HAMMER.
 - 5 CABLES PART OF WIRE ASM-COACH.
 - 4 SEE INVERTER/CHARGER OWNER'S MANUAL FOR ADDITIONAL INFORMATION.
 - 3 SEE WIRING INSTL-CHASSIS FOR ADDITIONAL INFORMATION.
 - 2 BRACKET IS LOCATED BY HOLES ON BRACKET.
 - 1 SEE LOAD CENTER/ATS ASM FOR ADDITIONAL INFORMATION.

FOR ELECTRICAL TORQUE SPECIFICATIONS SEE DWG NO. 128783-01-000

FOR ELECTRICAL CALLOUTS SEE DWG NO. 121339-01-000

265 CODES/STANDARDS-CSA/CMVSS
1B1 CODES/STANDARDS USA

DESCRIPTION:	
WIRING INSTL-BODY, 110V	
SHEET:	ITEM/PART NO.:
4 OF 5	000211500 / 30128501000
REV	



- NOTES:**
- 8 REMOVE & DISCARD CONNECTOR TO CONNECT TO RCP WITHOUT 1DF
 - 7 WITHOUT 1DF
 - 6 LINE 2 (RED) ROUTED THRU THIS CURRENT SENSOR.
 - 5 LINE 1 (BLK) ROUTED THRU THIS CURRENT SENSOR.
 - 4 WIRE ROUTED IN SIDEWALL.
 - 3 WIRE ROUTED IN ROOF.
 - 2 WIRE IS PUSHED THROUGH SIDEWALL TO RECEPTACLE.
 - 1 ALL OUTLETS DOWN STREAM AND INCLUDING THIS OUTLET ARE GROUND FAULT INTERRUPT PROTECTED.

FOR ELECTRICAL TORQUE SPECIFICATIONS SEE DWG NO. 128783-01-000

FOR ELECTRICAL CALLOUTS SEE DWG NO. 121339-01-000

- 1DF EXT TV ENTERTAINMENT CENTER
- 53K WTR HTR-10GAL/ELECTRIC/LPGAS
- 48D BED-QUEEN, AIR SLEEP SYSTEM
- 14C FIREPLACE-ELECTRIC
- 265 CODES/STANDARDS-CSA/CMVSS
- 1B1 CODES/STANDARDS USA

DESCRIPTION: WIRING INSTL-BODY, 110V		
SHEET: 5 OF 5	ITEM/PART NO.: 000211500 / 30128501000	REV
02-Apr-2018		