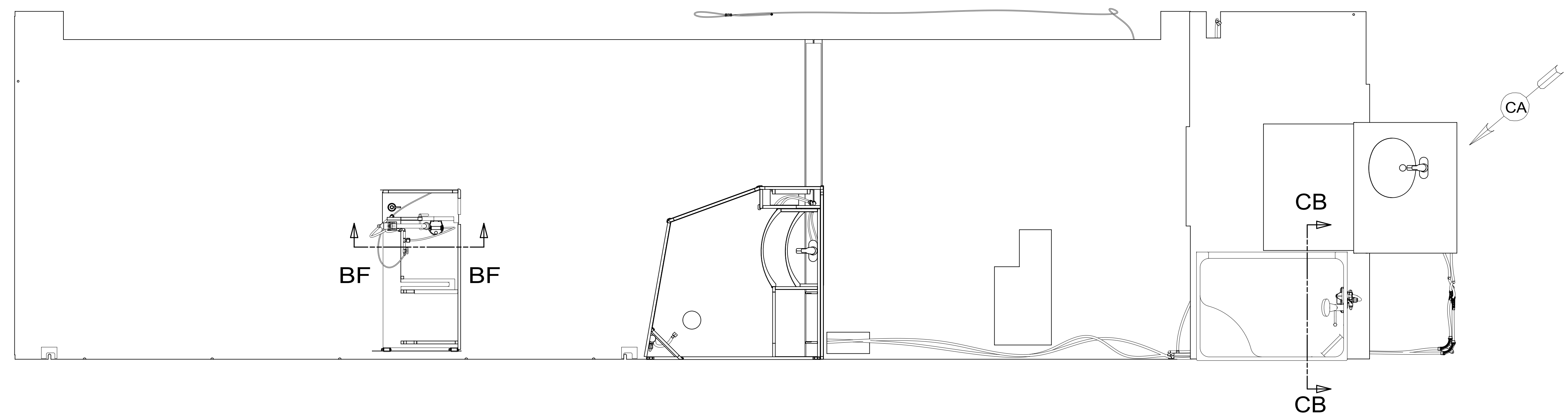


| REV | ZONE | REVISION RECORD  | DATE     | DFTR-ORIG |
|-----|------|--|----------|-----------|
| A   | ---  | INITIAL RELEASE  | 6-1-16   | 1600-7381 |
| B   | ---  | CGH LENGTHS ST3;4                                      | 7-28-16  | 1600-7381 |
| C   | SHT2 | TU-5/12850 WAS 11950                                   | 11/11/16 | 3650-0862 |
| D   | S4   | TU10/ 50 WAS 150 & 2510 WAS 1590<br>TU-9 2250 WAS 1600 | 11/23/16 | 9080-7381 |
| E   | S4   | NO CHG. FIX DRAFTING                                   | 11/29/16 | 9080      |
| F   | ---  | CHG LENGTH SHT 2;4                                     | 12-15-16 | 1600-3508 |
| G   | ---  | NEW FILTER   | 12-21-16 | 0626-1600 |
| H   | SHT3 | ADDED PL-3, UPDATED FAUCET VALVE<br>AND TRIM           | 8-31-17  | 8378-1600 |

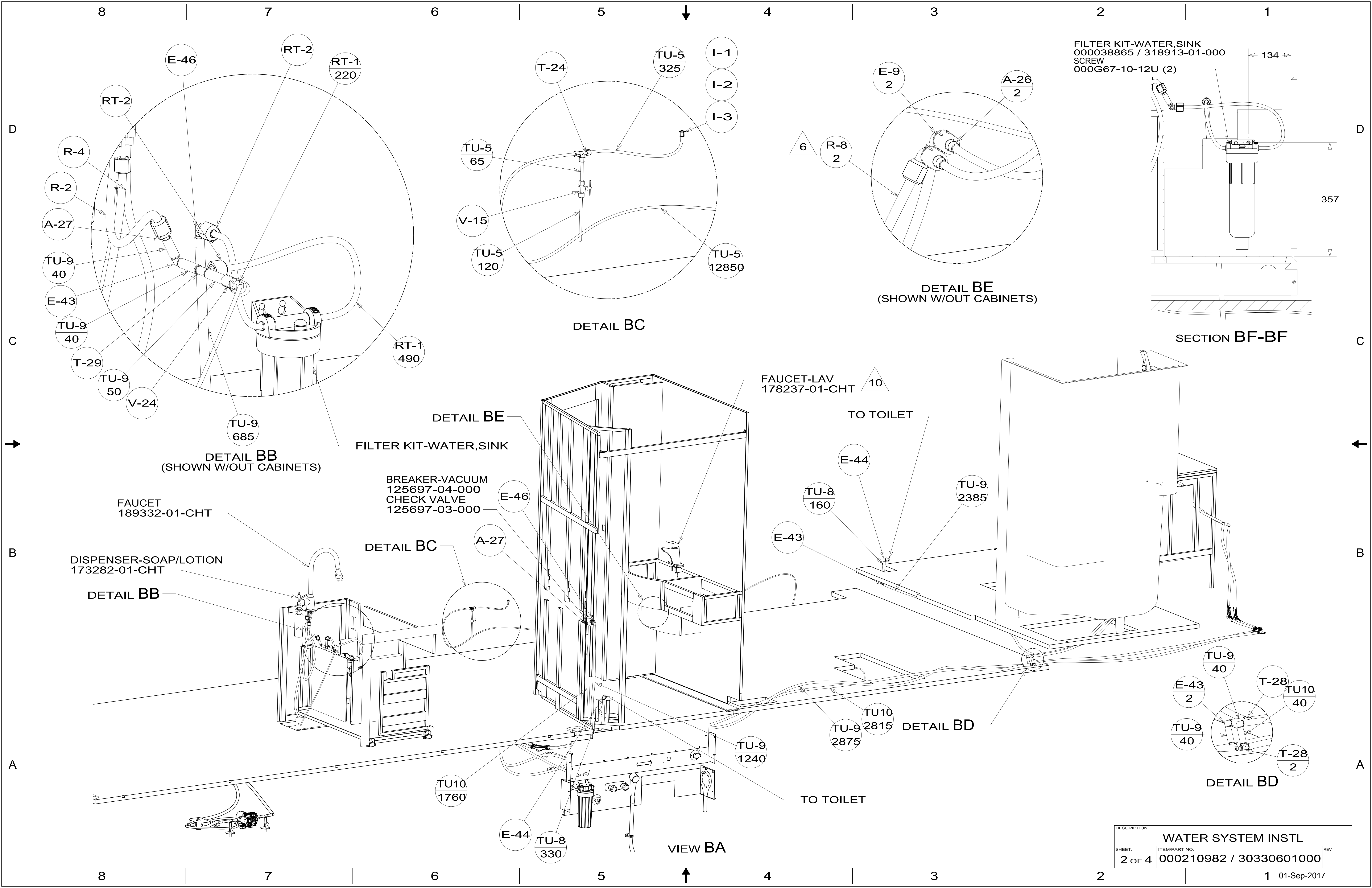


- 11. FOR INSTALLATION USE SILICON ADHESIVE 131264-05-CHT, APPLY ON TOP OF PLATE, PLACE COVER ON, AND PUT ADHESIVE AROUND COVER.
- 10. INSTALL FAUCET W/OUT BASEPLATE.
- 9. VALVE MUST REMAIN OPEN AFTER WATER TEST.
- 8. ALL CRIMP FITTINGS TO 1/2" PEX TUBING REQUIRE 1/2" CLAMP 140171-03-000.
- 7. ALL CRIMP FITTINGS TO 5/8" PEX TUBING REQUIRE 5/8" CLAMP 140171-04-000.
- 6. LABEL HOT AND COLD SUPPLY TUBES AND TAPE FITTING TO TUBE BEFORE CABINET SET TO PREVENT MOVEMENT.
- 5. ADD PIPE WRAP (LADDER SCRAP 110157-02-000) INSULATION.
- 4. ADD TEFLON TAPE 010405-02-000.
- 3. ALL TUBING TO BE SECURED AT 1200 INTERVALS MAXIMUM WITH CLAMP 010495-01-000 AND SCREW 000G67-10-12U OR EQUIVALENT.
- 2. TUBING TO BE INSTALLED WITH SUFFICIENT SLOPE TO PROVIDE DRAINAGE TO NEAREST VALVE.
- 1. PLASTIC FITTINGS TO BE SEALED WITH SEALANT 084456-01-000.

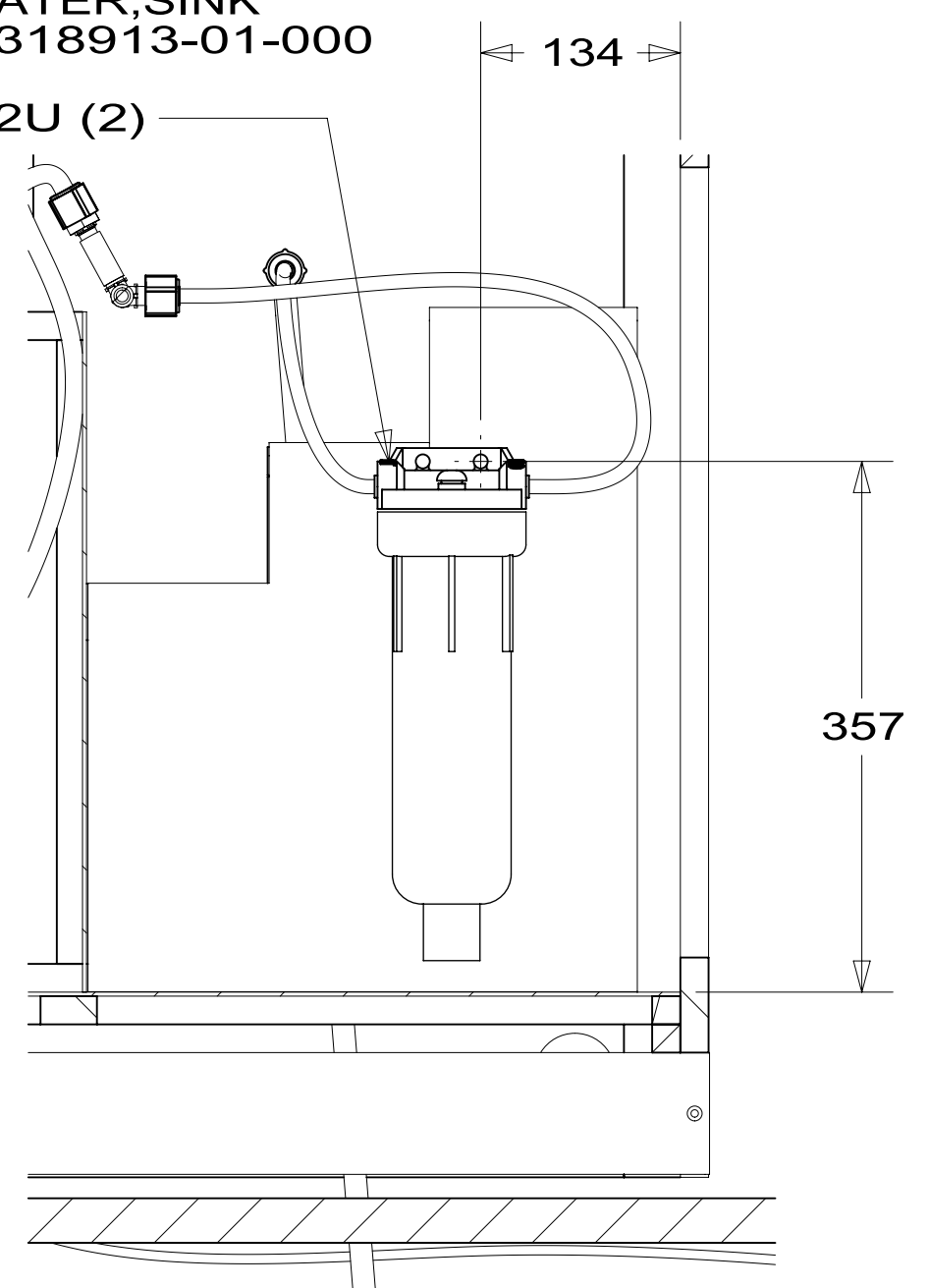
- 21S WASHER & DRYER-PAIR
- 21M WASHER/DRYER PREP

**WINNEBAGO**  
COPYRIGHT 2017 WINNEBAGO INDUSTRIES, INC.

|  |                                       |                   |
|--|---------------------------------------|-------------------|
| DSNR:  | ALL DIMENSIONS ARE IN MILLIMETERS     |                   |
| DFTR:  | MATERIAL:                             |                   |
| UNSPECIFIED TOLERANCES:                            | WHOLE DIM (X) : 3                     |                   |
|  | ONE-PLACE (X.X) : 1.5                 |                   |
|  | TWO-PLACE (X.XX) : 0.50               |                   |
|  | ANGLE : 1°                            |                   |
| REFER TO ES0018 FOR FASTENER TIGHTENING GUIDELINES | WEIGHT: (LBS)                         | FIRST USED: (REF) |
|  |                                       | 17 P40J           |
| DESCRIPTION:<br><b>WATER SYSTEM INSTL</b>          |                                       |                   |
| SHEET: 1 OF 4                                      | ITEM/PART NO: 000210982 / 30330601000 | REV:              |
| REF:   |                                       | 1 01-Sep-2017     |



FILTER KIT-WATER,SINK  
 000038865 / 318913-01-000  
 SCREW  
 000G67-10-12U (2)



SECTION BF-BF

DETAIL BE  
(SHOWN W/OUT CABINETS)

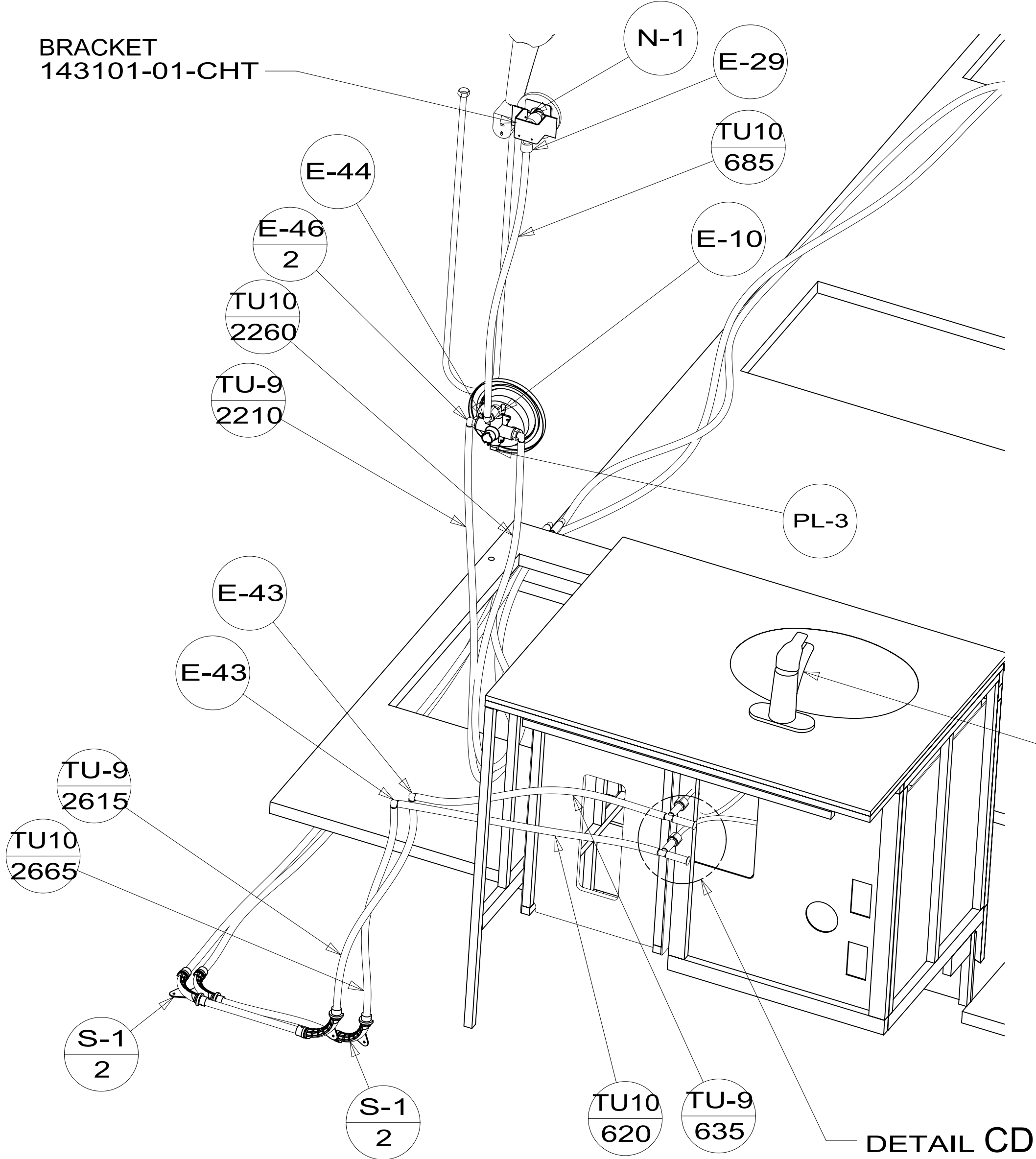
DETAIL BC

DETAIL BB  
(SHOWN W/OUT CABINETS)

VIEW BA

|                    |                         |               |
|--------------------|-------------------------|---------------|
| DESCRIPTION:       |                         |               |
| WATER SYSTEM INSTL |                         |               |
| SHEET:             | ITEM/PART NO.:          | REV           |
| 2 OF 4             | 000210982 / 30330601000 |               |
|                    |                         | 1 01-Sep-2017 |

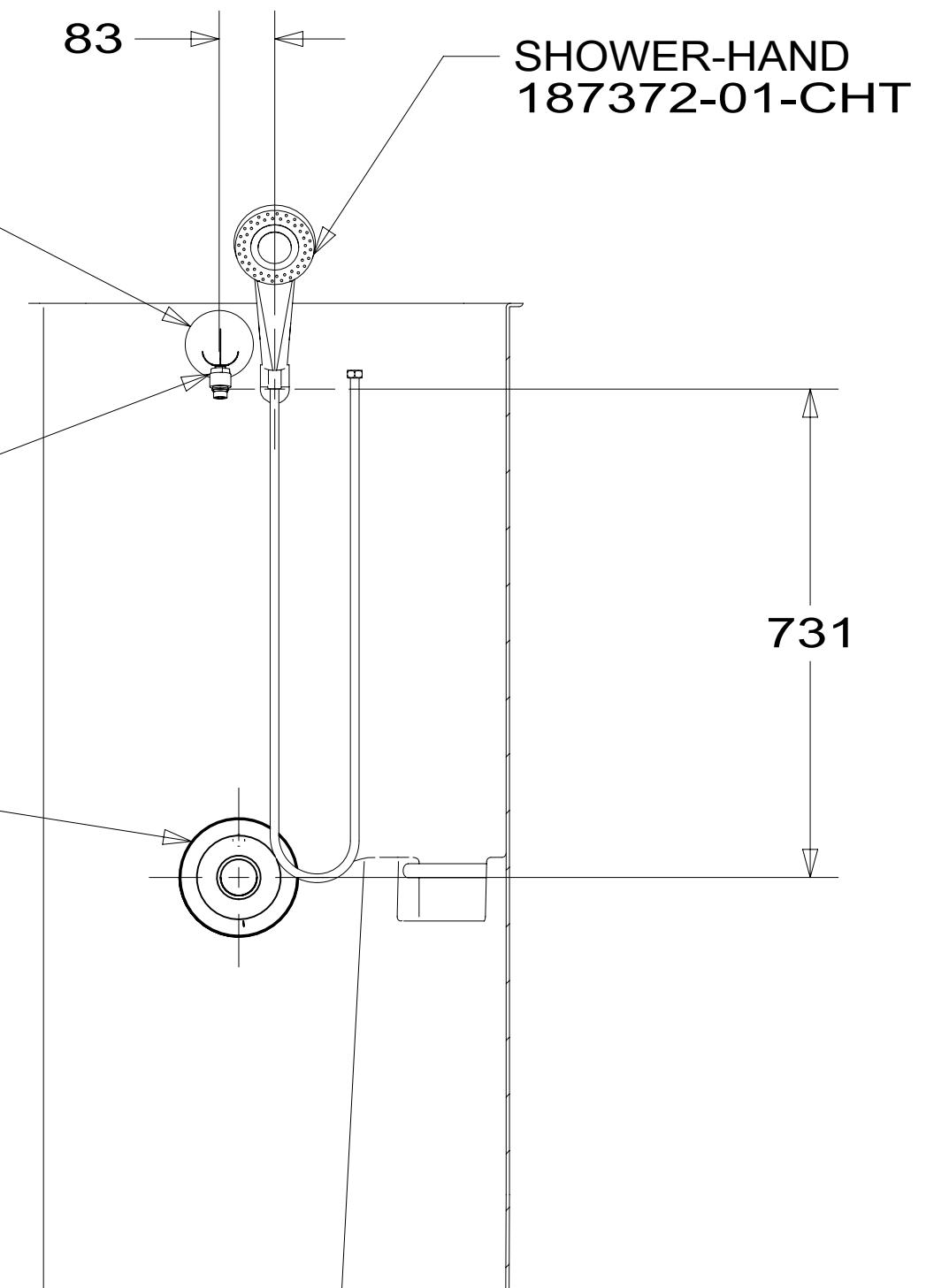
BRACKET  
143101-01-CHT



VIEW CA

DETAIL CD

DROP ELL  
135028-02-CHT  
PLATE COVER  
189861-01-xxx  
PLATE  
143218-03-CHT

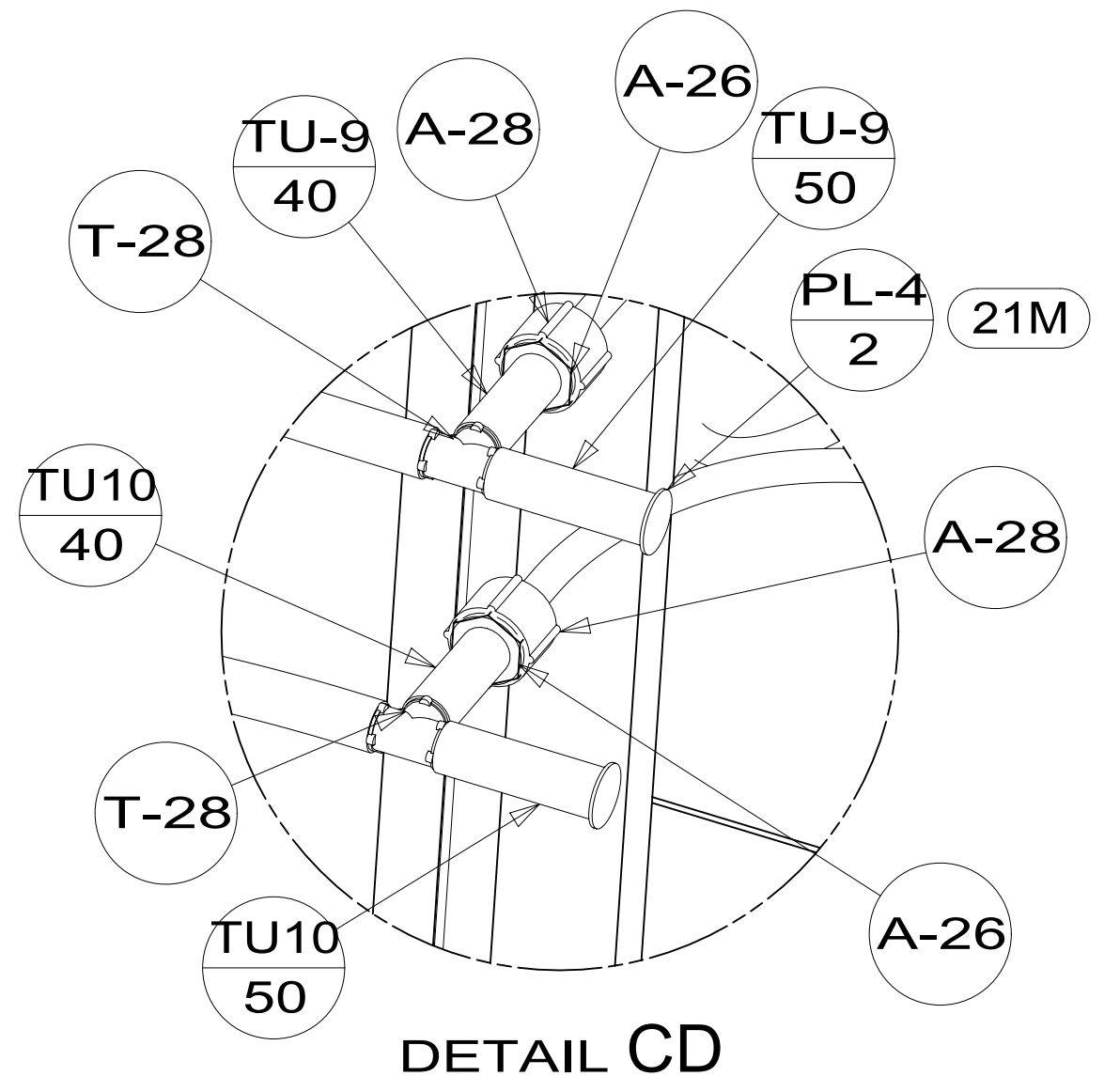


VACUUM BREAKER  
176678-01-CHT

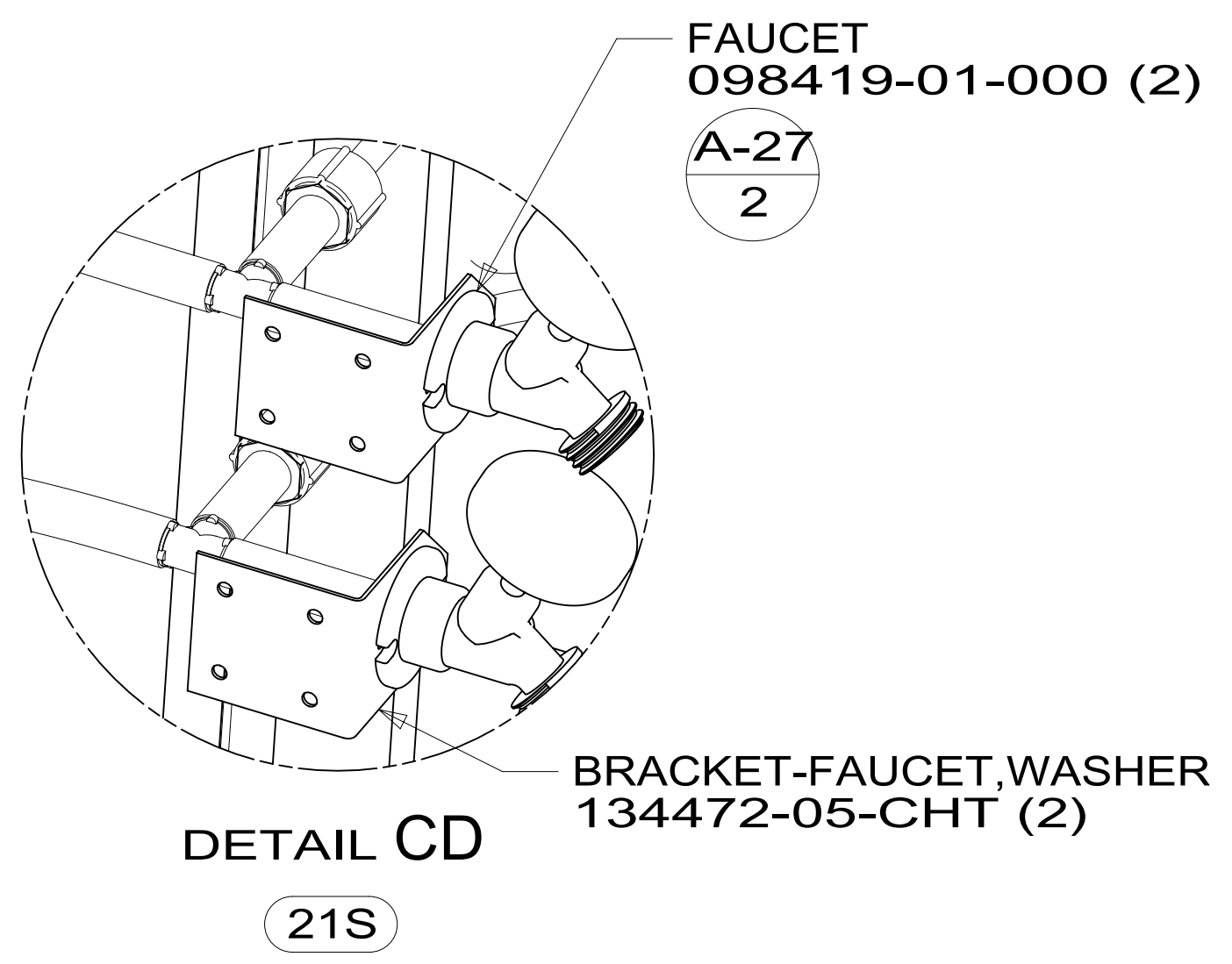
FAUCET-VALVE,SHOWER  
144596-01-CHT  
FAUCET-TRIM KIT  
144596-02-CHT

SECTION CB-CB  
(SHOWN W/OUT CABINETS)  
(ROTATED)

FAUCET-LAV  
178237-01-CHT 10

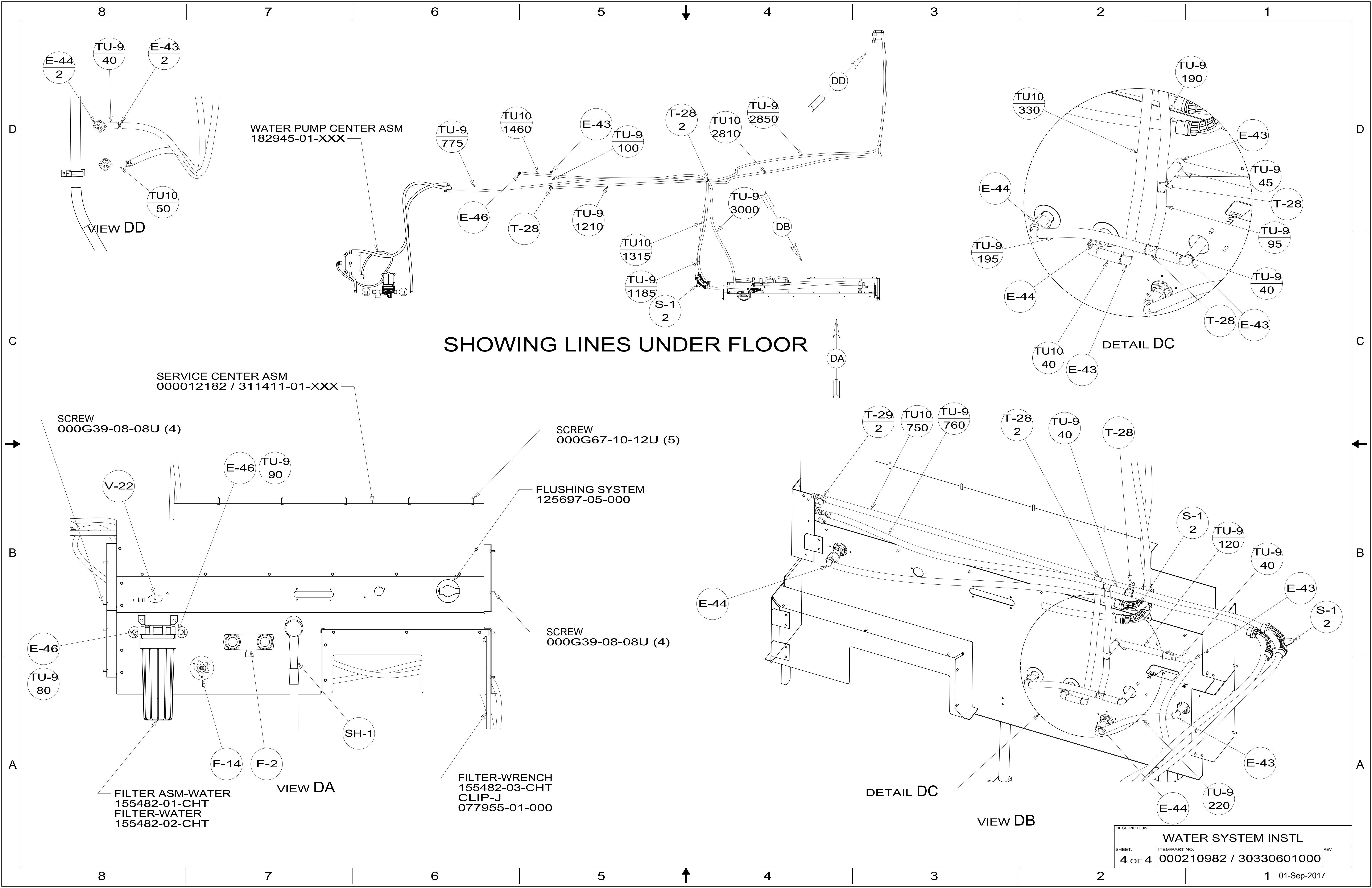


DETAIL CD



DETAIL CD

|   |   |               |
|---|---|---------------|
| DESCRIPTION:<br><b>WATER SYSTEM INSTL</b> |   |               |
| SHEET:<br><b>3 OF 4</b>                   | ITEM/PART NO:<br><b>000210982 / 30330601000</b> | REV           |
|   |   | 1 01-Sep-2017 |



| DESCRIPTION:       |                         |      |
|--------------------|-------------------------|------|
| WATER SYSTEM INSTL |                         |      |
| SHEET:             | ITEM/PART NO:           | REV: |
| 4 OF 4             | 000210982 / 30330601000 |      |