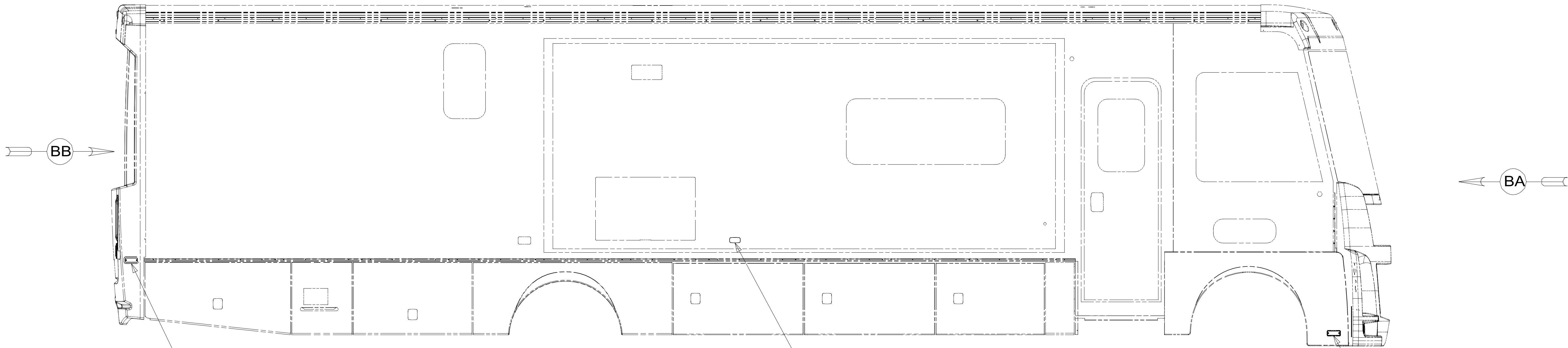


8 7 6 5 4 3 2 1

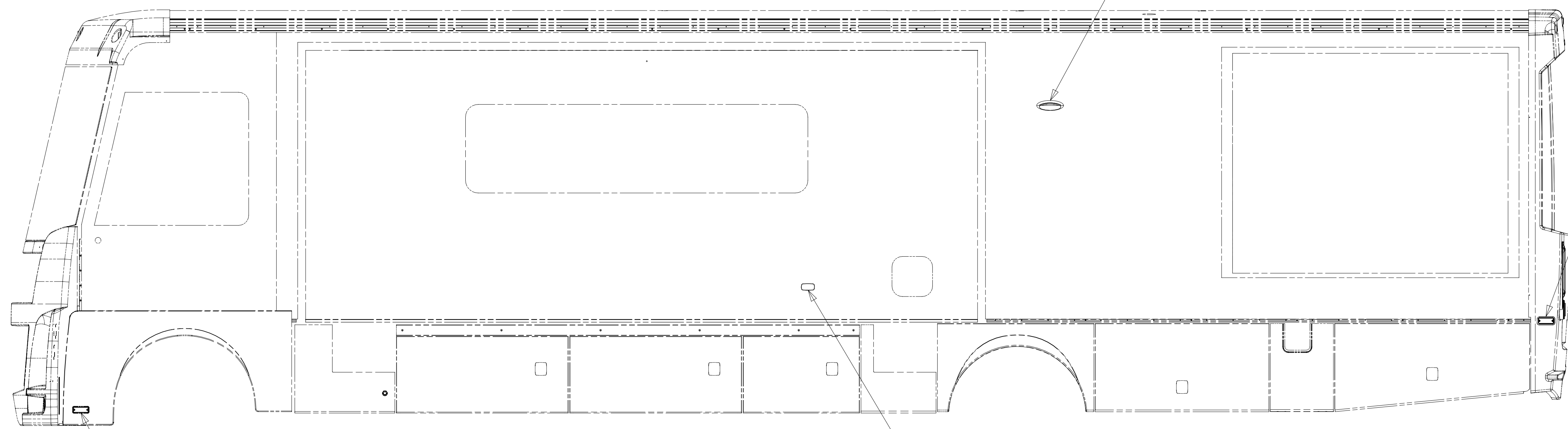


LAMP ASM-SIDEMARKER,RED
171195-01-000
BEZEL-LIGHT,SIDEMARKER
181242-01-CHT
SCREW
G39-08-16U (2)

LAMP-MARKER,
W AMBER LENS,BLK
193802-03-000
SCREW
G11-08-12U (2)

LAMP ASM-CLEARANCE
171195-02-000
SCREW
G11-08-12U (2)

LAMP ASM-PORCH
191677-01-000



LAMP ASM-CLEARANCE
171195-02-000
SCREW
G11-08-12U (2)

LAMP-MARKER,
W AMBER LENS,BLK
193802-03-000
SCREW
G11-08-12U (2)

LAMP ASM-SIDEMARKER,RED
171195-01-000
BEZEL-LIGHT,SIDEMARKER
181242-01-CHT
SCREW
G39-08-16U (2)

- 265 CODES/STANDARDS-CSA/CMVSS
- 1B1 CODES/STANDARDS USA
- 1B1 265



DSNR:		ALL DIMENSIONS ARE IN MILLIMETERS	
DIFFR:		MATERIAL:	
UNSPECIFIED TOLERANCES:			
WHOLE DIM (X)	: 3		
ONE-PLACE (X.X)	: 1.5		
TWO-PLACE (X.XX)	: 0.50		
ANGLE	: 1°		

REFER TO ES0018 FOR FASTENER TIGHTENING GUIDELINES

WEIGHT: (LBS) FIRST USED:
16 J38Q

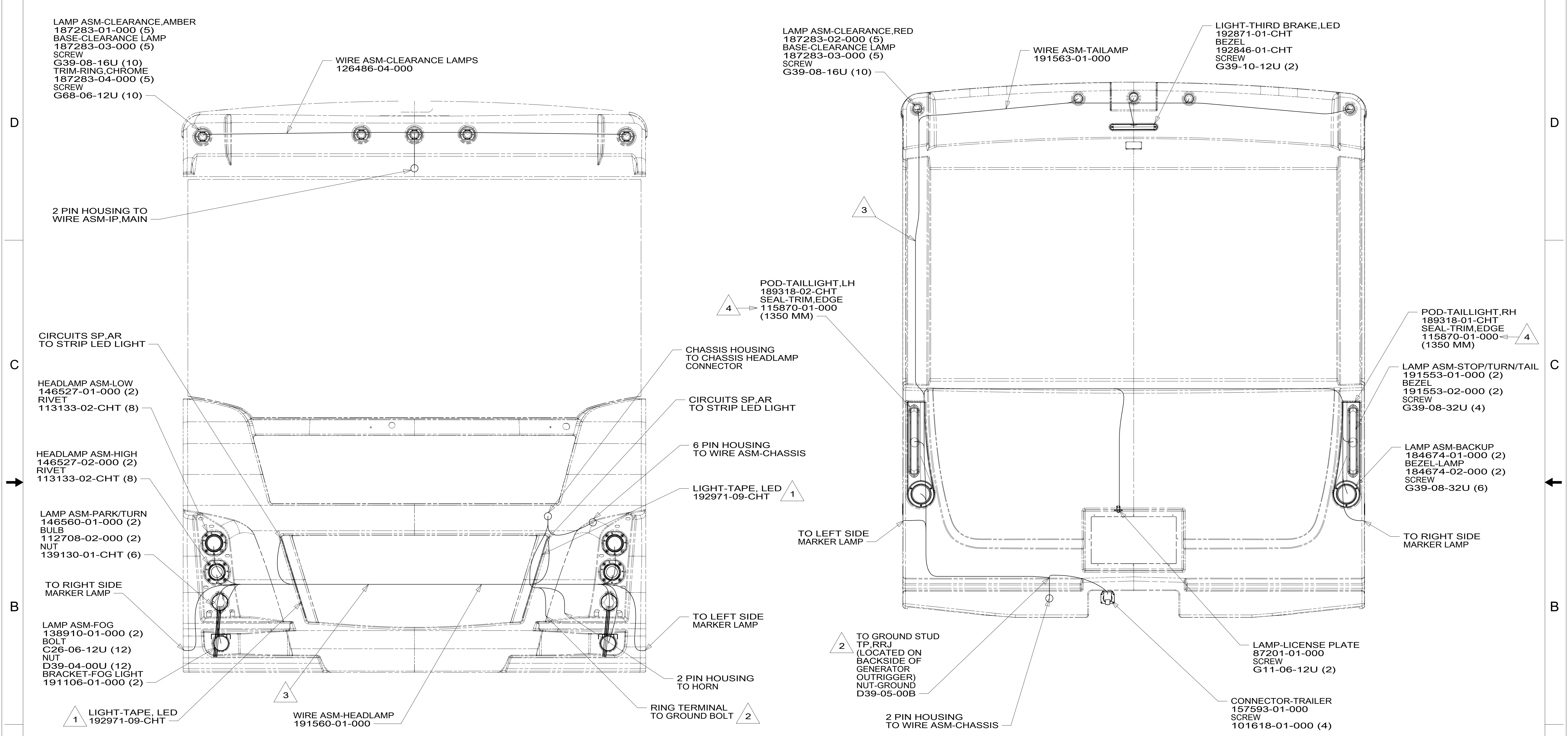
DESCRIPTION:
WIRING INSTL-EXTERIOR LAMPS

SHEET: 1 OF 2 ITEM/PART NO: 000210604 / 30324001000 REV

FOR ELECTRICAL TORQUE SPECIFICATIONS SEE DWG NO. 128783-01-000

FOR ELECTRICAL CALLOUTS SEE DWG NO. 121339-01-000

8 7 6 5 4 3 2 1



- NOTES:**
- 3 SECURE WIRE ASM APPROX. EVERY 450 MM TO BACKWALL BRACKETS. USE TIE-WIRE 8343-01-000 OR 93147-01-000 AS APPROPRIATE.
 - 2 CLEAN PAINT OFF METAL (BOLT) BEFORE CONNECTING GROUND TO INSURE CONTACT.
 - 1 MOUNT TO FIBERGLASS AFTER PAINT AND CLEAR COAT. CLEAN SURFACE WITH ISOPROPYL ALCOHOL. REMOVE SMALL AREA OF TAPE LINER ON TOP AND BOTTOM OF THE BACK SIDE OF LIGHT STRIP. APPLY PRIMER 176823-01-000 TO ENDS OF LIGHT STRIP, LET DRY AND THEN APPLY ADHESIVE 176824-01-000 IN THE SAME AREA. REMOVE REMAINING TAPE LINER AND APPLY TO PAINTED FIBERGLASS SURFACE. DO NOT APPLY PRIMER OR ADHESIVE DIRECTLY ON PAINTED FIBERGLASS SURFACE.

4 INSTALL SEAL AROUND PERIMETER OF POD. LOCATE SPLIT AT BOTTOM OF POD.

FOR ELECTRICAL TORQUE SPECIFICATIONS SEE DWG NO. 128783-01-000

FOR ELECTRICAL CALLOUTS SEE DWG NO. 121339-01-000

265 CODES/STANDARDS-CSA/CMVSS
1B1 CODES/STANDARDS USA

DESCRIPTION:	
WIRING INSTL-EXTERIOR LAMPS	
SHEET:	ITEM/PART NO.:
2 OF 2	000210604 / 30324001000
REV	