

D

D

C

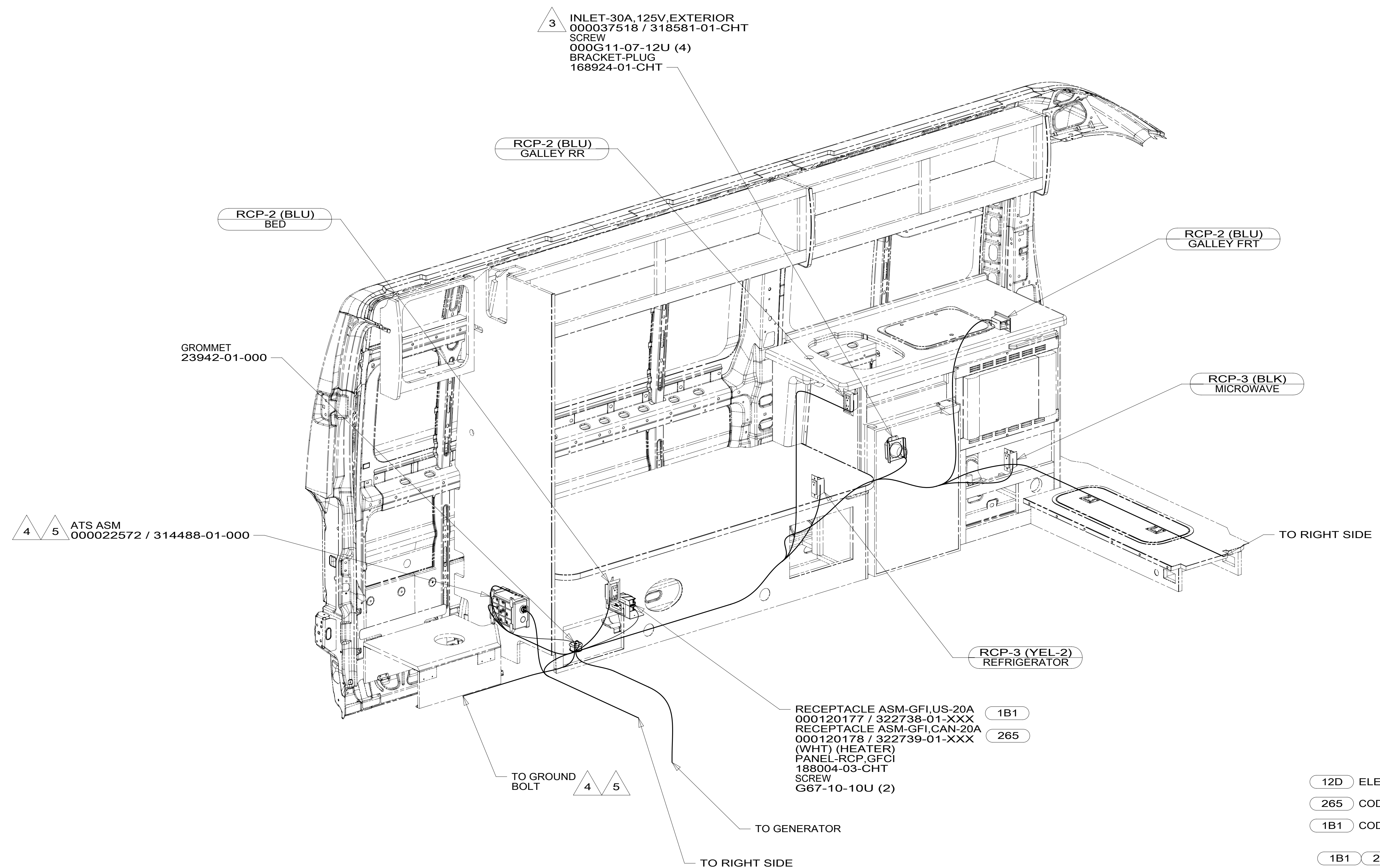
C

B

B

A

A



- NOTES:
- 5 LOAD CENTER AND ATS GROUND WIRES MUST BE ATTACHED DIRECTLY TO CHASSIS GROUND.
  - 4 GROUND WIRES (8 GA WIRE) FROM LOAD CENTER AND ATS ROUTES THROUGH FLOOR TO GROUND BOLT.
  - 3 DO NOT HI-POT INLET. LED MAY FAIL.
2. ALL 110V WIRES TO BE CLAMPED WITH CLAMP 10497-05-000 WITHIN 200MM OF OUTLET BOXES, USE SCREW G67-10-12B.
  1. AT MINIMUM ALL WIRES TO BE SUPPORTED AND SECURED PER CODE REQUIREMENTS. USE CLAMP 10495 OR 10497 OR WIRE TIE 8343 OR 108046 AND SCREW G67-XX-XXX OR G56-XX-XXX AS APPROPRIATE FOR INSTALLATION.

FOR ELECTRICAL TORQUE SPECIFICATIONS SEE DWG NO. 128783-01-000

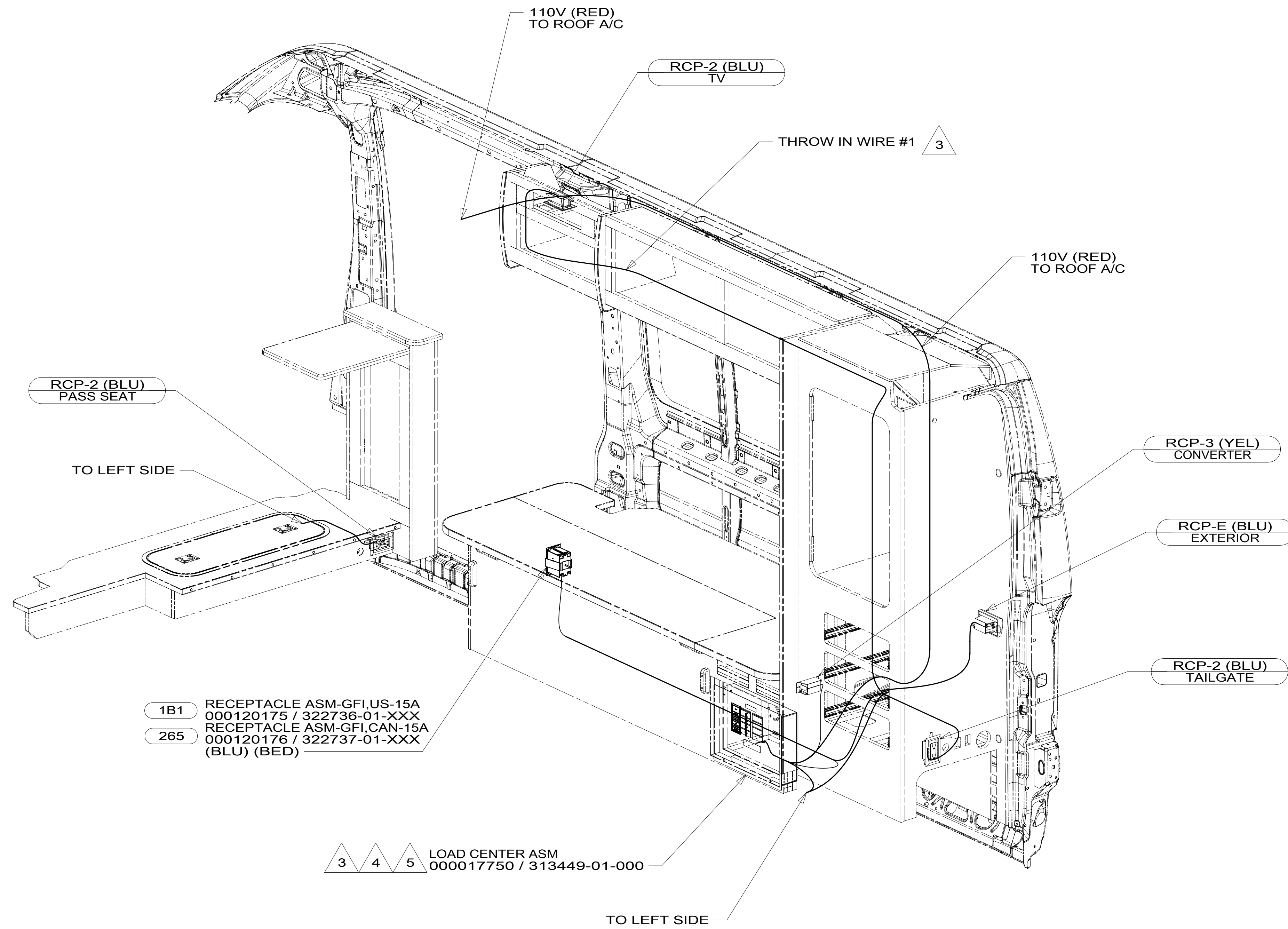
FOR ELECTRICAL CALLOUTS SEE DWG NO. 121339-01-000

- 12D ELECTRICAL SYSTEM 30 AMP
- 265 CODES/STANDARDS-CSA/CMVSS
- 1B1 CODES/STANDARDS USA

1B1 265 12D



DSNR:		ALL DIMENSIONS ARE IN MILLIMETERS	
DFFR:		MATERIAL:	
UNSPECIFIED TOLERANCES:		WEIGHT: (LBS)	FIRST USED:
WHOLE DIM (X)	: 3		17 259K
ONE-PLACE (X.X)	: 1.5		
TWO-PLACE (X.XX)	: 0.50		
ANGLE	: 1°		
REFER TO ES0018 FOR FASTENER TIGHTENING GUIDELINES			
<b>DESCRIPTION:</b>			
<b>WIRING INSTL-BODY, 110V</b>			
SHEET:	ITEM/PART NO.:	REV:	
1 OF 4	000210566 / 30313701000		
REF:		1 05-Jul-2017	



1B1 RECEPTACLE ASM-GFI,US-15A  
000120175 / 322736-01-XXX  
265 RECEPTACLE ASM-GFI,CAN-15A  
000120176 / 322737-01-XXX  
(BLU) (BED)

3 4 5 LOAD CENTER ASM  
000017750 / 313449-01-000

- 5 LOAD CENTER AND ATS GROUND WIRES MUST BE ATTACHED DIRECTLY TO CHASSIS GROUND.
- 4 GROUND WIRES (8 GA WIRE) FROM LOAD CENTER AND ATS ROUTES THROUGH FLOOR TO GROUND BOLT.
- 3 SEE SHEET 4 FOR ADDITIONAL INFORMATION.

2. ALL 110V WIRES TO BE CLAMPED WITH CLAMP 10497-05-000 WITHIN 200MM OF OUTLET BOXES, USE SCREW G67-10-12B.
1. AT MINIMUM ALL WIRES TO BE SUPPORTED AND SECURED PER CODE REQUIREMENTS. USE CLAMP 10495 OR 10497 OR WIRE TIE 8343 OR 108046 AND SCREW G67-XX-XXX OR G56-XX-XXX AS APPROPRIATE FOR INSTALLATION.

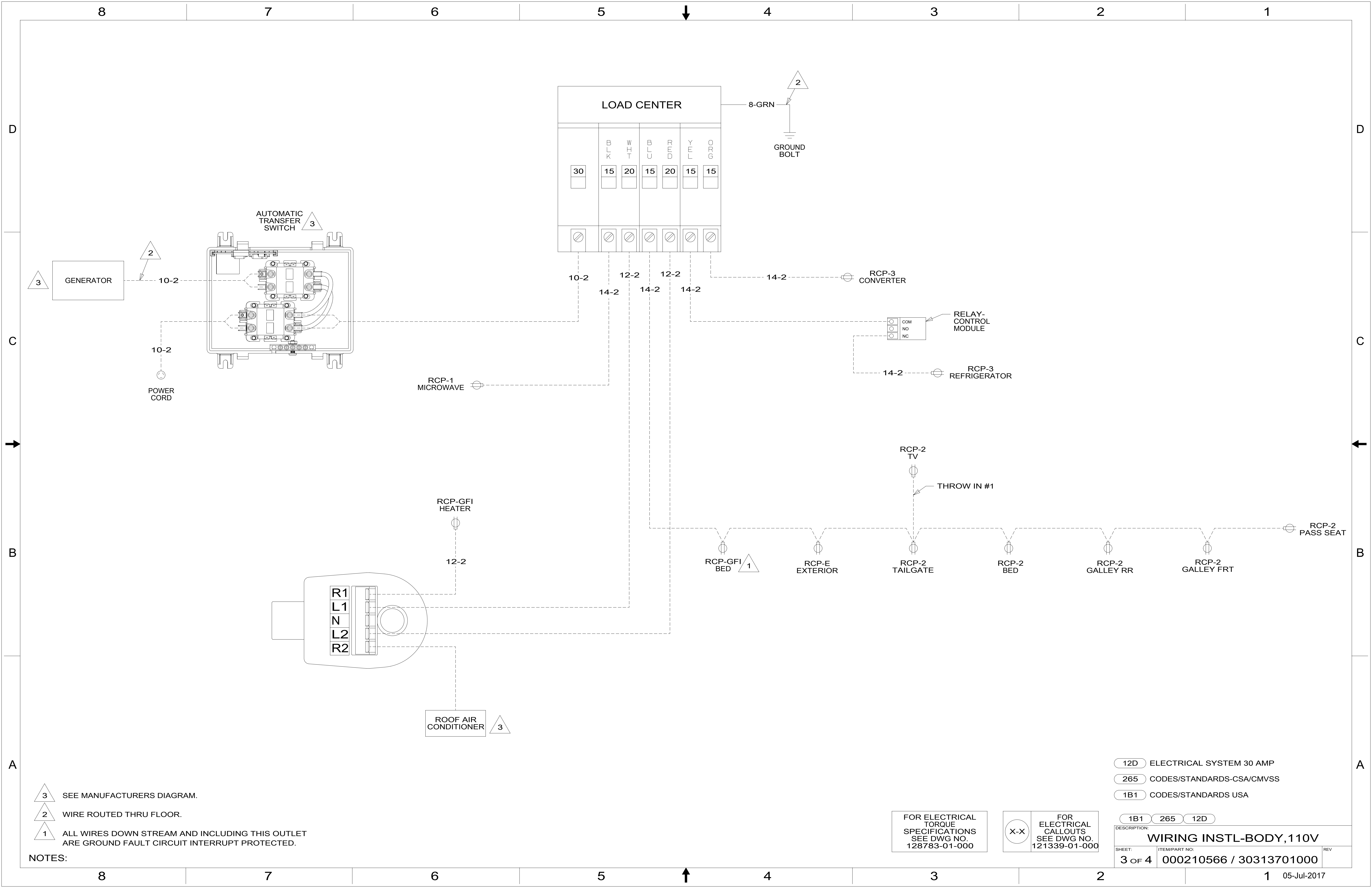
NOTES:

- 12D ELECTRICAL SYSTEM 30 AMP
- 265 CODES/STANDARDS-CSA/CMVSS
- 1B1 CODES/STANDARDS USA

FOR ELECTRICAL TORQUE SPECIFICATIONS SEE DWG NO. 128783-01-000

FOR ELECTRICAL CALLOUTS SEE DWG NO. 121339-01-000

DESCRIPTION:	1B1 265 12D	
<b>WIRING INSTL-BODY, 110V</b>		
SHEET:	ITEM/PART NO:	REV
2 OF 4	000210566 / 30313701000	



- NOTES:**
- 3 SEE MANUFACTURERS DIAGRAM.
  - 2 WIRE ROUTED THRU FLOOR.
  - 1 ALL WIRES DOWN STREAM AND INCLUDING THIS OUTLET ARE GROUND FAULT CIRCUIT INTERRUPT PROTECTED.

FOR ELECTRICAL TORQUE SPECIFICATIONS SEE DWG NO. 128783-01-000

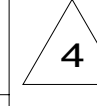
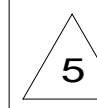
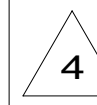
FOR ELECTRICAL CALLOUTS SEE DWG NO. 121339-01-000

- 12D ELECTRICAL SYSTEM 30 AMP
- 265 CODES/STANDARDS-CSA/CMVSS
- 1B1 CODES/STANDARDS USA

DESCRIPTION: <b>WIRING INSTL-BODY, 110V</b>		
SHEET: <b>3 OF 4</b>	ITEM/PART NO: <b>000210566 / 30313701000</b>	REV



RED	1B1	136135-07-054
	265	136136-07-054
YEL	1B1	136131-05-043
	265	136134-05-043
BLK	1B1	136131-06-060
	265	136134-06-060
BLU	1B1	136131-02-230
	265	136134-02-230
WHT	1B1	136135-09-030
	265	136136-09-030
ORG	1B1	136131-16-015
	265	136134-16-015
MAIN	1B1	136137-01-025
	265	136138-01-025
GROUND MAIN		136145-05-027
MAIN EXTENSION	1B1	136137-01-040
	265	136138-01-040
CORD-POWER ASM		183140-01-000
GROUND ATS		136145-05-020
THROW IN WIRE #1	1B1	136131-02-050
	265	136134-02-050



D

D

C

C

B

B

A

A

- NOTES:
- 5 DO NOT HI-POT POWER CORD, LED INDICATOR LIGHT MAY FAIL.
  - 4 GROUND WIRES TO BE INSTALLED ON MFG LINE. SHIP GROUND WIRES LOOSE WITH LOAD CENTER.
  - 3. SEE WIRING INSTL-BODY, 12V FOR ADDITIONAL INFORMATION.
  - 2. SECURE WIRES TO BACKSIDE OF LOAD CENTER WITH WIRE TIE 116673-01-000.
  - 1. ALL GROUNDS WIRES TO BE COVERED WITH TUBING 8041-02-000.

- 12D ELECTRICAL SYSTEM 30 AMP
- 265 CODES/STANDARDS-CSA/CMVSS
- 1B1 CODES/STANDARDS USA

FOR ELECTRICAL TORQUE SPECIFICATIONS SEE DWG NO. 128783-01-000

FOR ELECTRICAL CALLOUTS SEE DWG NO. 121339-01-000

1B1	265	12D
DESCRIPTION: <b>WIRING INSTL-BODY, 110V</b>		
SHEET: 4 OF 4	ITEM/PART NO: 000210566 / 30313701000	REV

