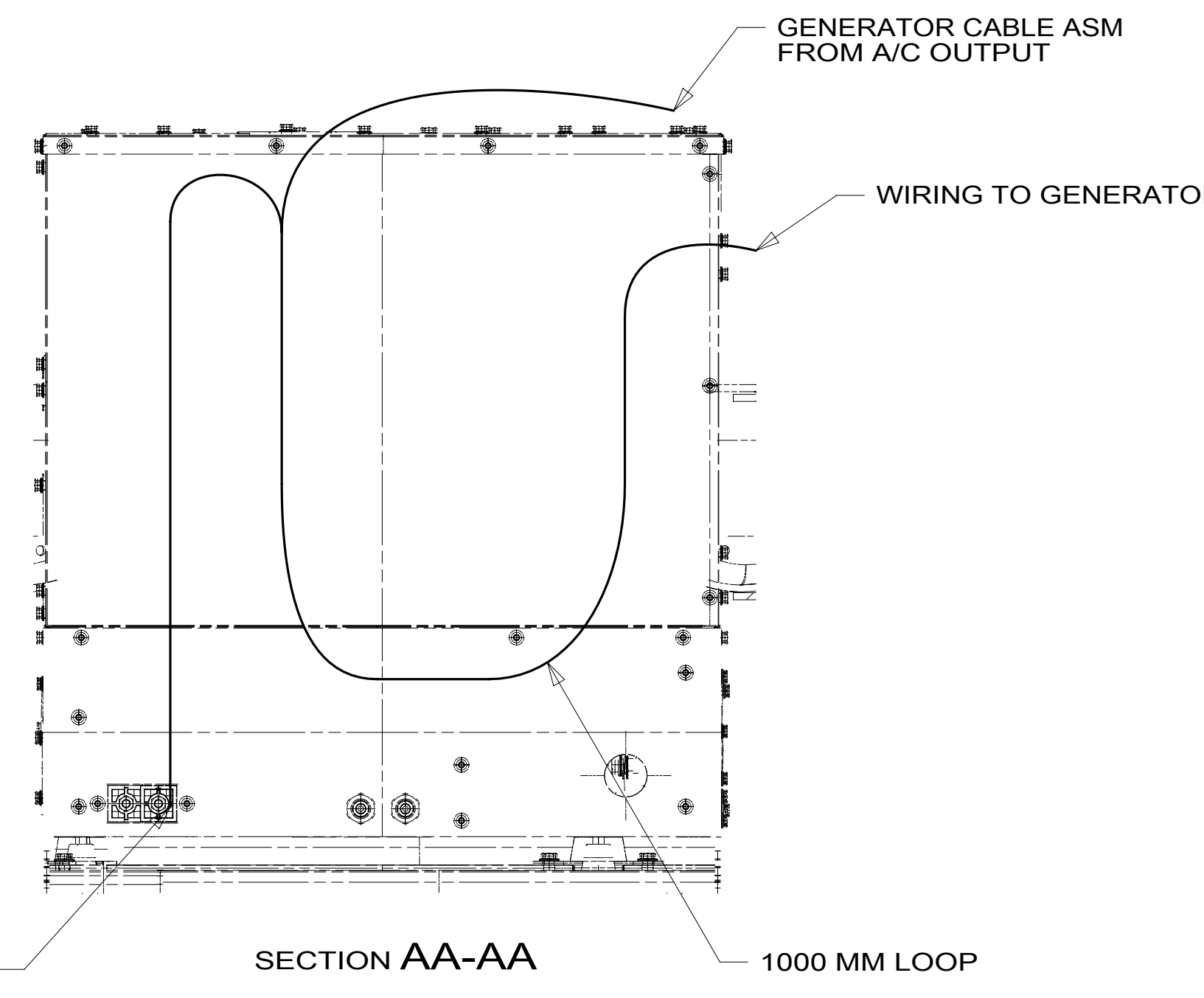


- 9 MHP TO INSTALL ON VALVE STEMS PER MANUFACTURING INSTRUCTIONS.
- 8 MOUNT ANTENNA WITH SUPPLIED BRACKET. ROUTE ANTENNA WIRE ALONG D/S FRAME RAIL AND SECURE WITH OTHER LOOMS. ROUTE UP D/S A-PILLAR AND COIL EXCESS AT TOP.
- 7 REST WIRE IN FRAME RAIL WHEN APPLICABLE.
- 6 CLAMP 83610-01-000, SCREW G39-08-12B
- 5 CLAMP 10497-03-000, SCREW G39-08-12B
- 4 USE TIE-WIRE 8343-04-000 TO SECURE WIRES TO FLOOR SUPPORT FRAME AT LEAST ONCE EVERY 600MM.
- 3 SEE BATTERY INSTL FOR ADDITIONAL INFORMATION.
- 2 SEE WIRING INSTL-FRONT END FOR ADDITIONAL INFORMATION.
- 1 SEE WIRE ASM-CHASSIS FOR ADDITIONAL INFORMATION.
- NOTES:



FOR ELECTRICAL TORQUE SPECIFICATIONS SEE DWG NO. 128783-01-000

FOR ELECTRICAL CALLOUTS SEE DWG NO. 121339-01-000

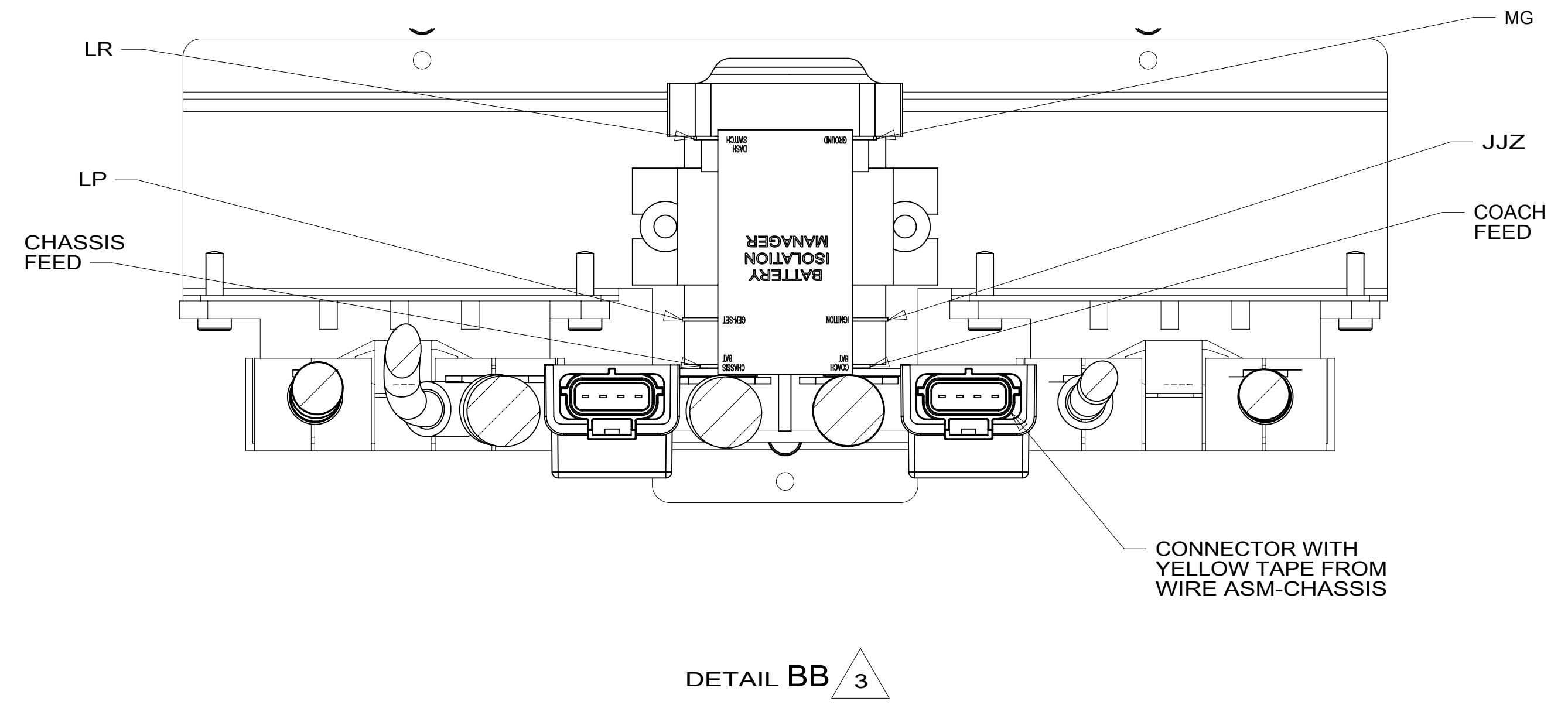
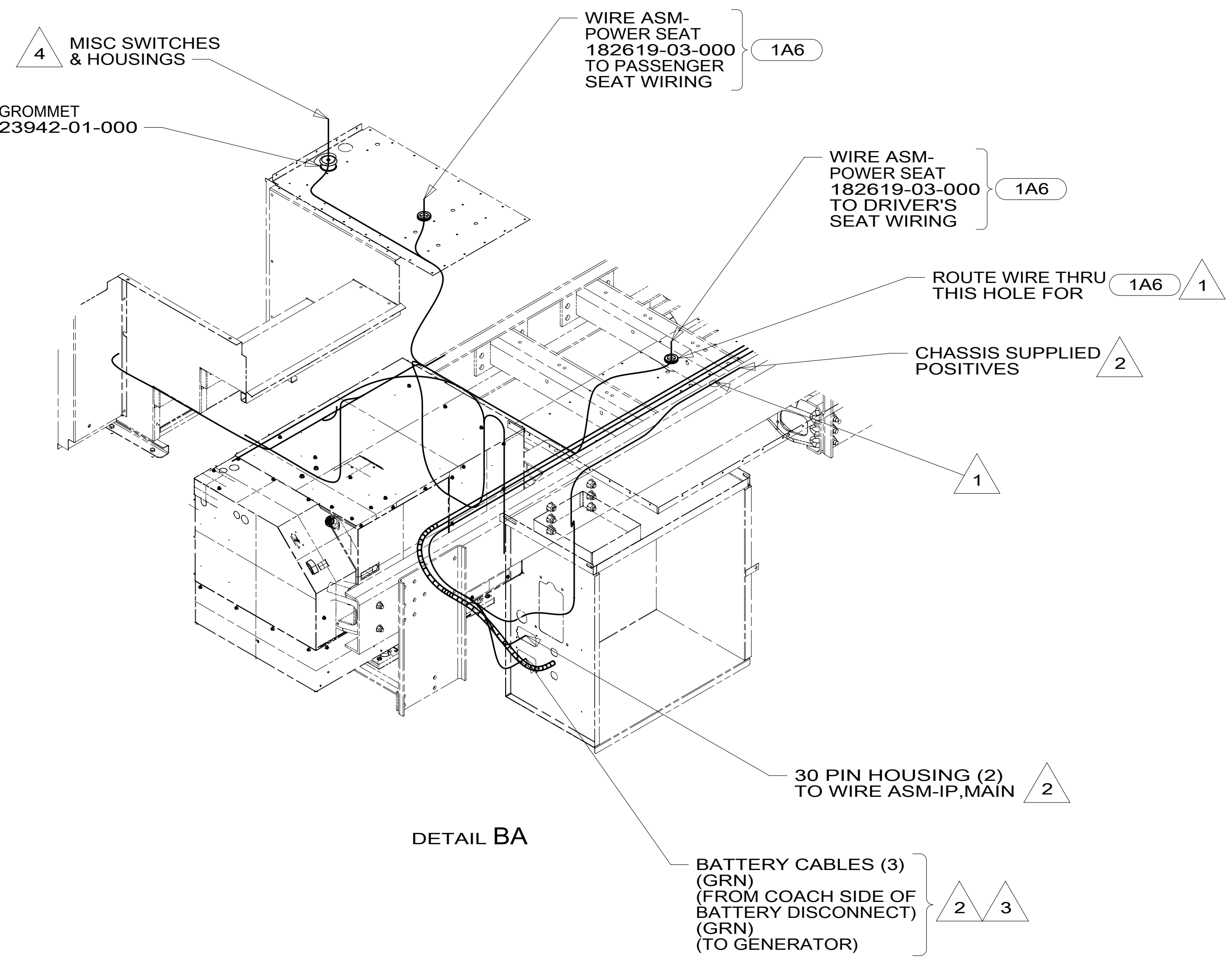
- 38M TIRE MONITORING SYSTEM
- 265 CODES/STANDARDS-CSA/CMVSS
- 1B1 CODES/STANDARDS USA

1B1 265

WINNEBAGO
COPYRIGHT 2016 WINNEBAGO INDUSTRIES, INC.

DSNR:	ALL DIMENSIONS ARE IN MILLIMETERS	MATERIAL:
DFFR:		
UNSPECIFIED TOLERANCES:		
WHOLE DIM (X)	3	
ONE-PLACE (X.X)	1.5	
TWO-PLACE (X.XX)	0.50	
ANGLE	1°	
REFER TO ES0018 FOR FASTENER TIGHTENING GUIDELINES	WEIGHT: (LBS)	FIRST USED:
		16 R45RL
DESCRIPTION:		
WIRING INSTL-CHASSIS		
SHEET:	ITEM/PART NO:	REV:
1 OF 3	000209847 / 30238001000	

8 7 6 5 4 3 2 1



- NOTES:
- 4 SEE WIRE ASM-CHASSIS FOR ADDITIONAL INFORMATION.
 - 3 SEE BATTERY INSTL FOR ADDITIONAL INFORMATION.
 - 2 SEE WIRING INSTL-FRONT END FOR ADDITIONAL INFORMATION.
 - 1 USE PLUG-PLASTIC 61420-12-000 FOR UNUSED HOLE & SEAL.

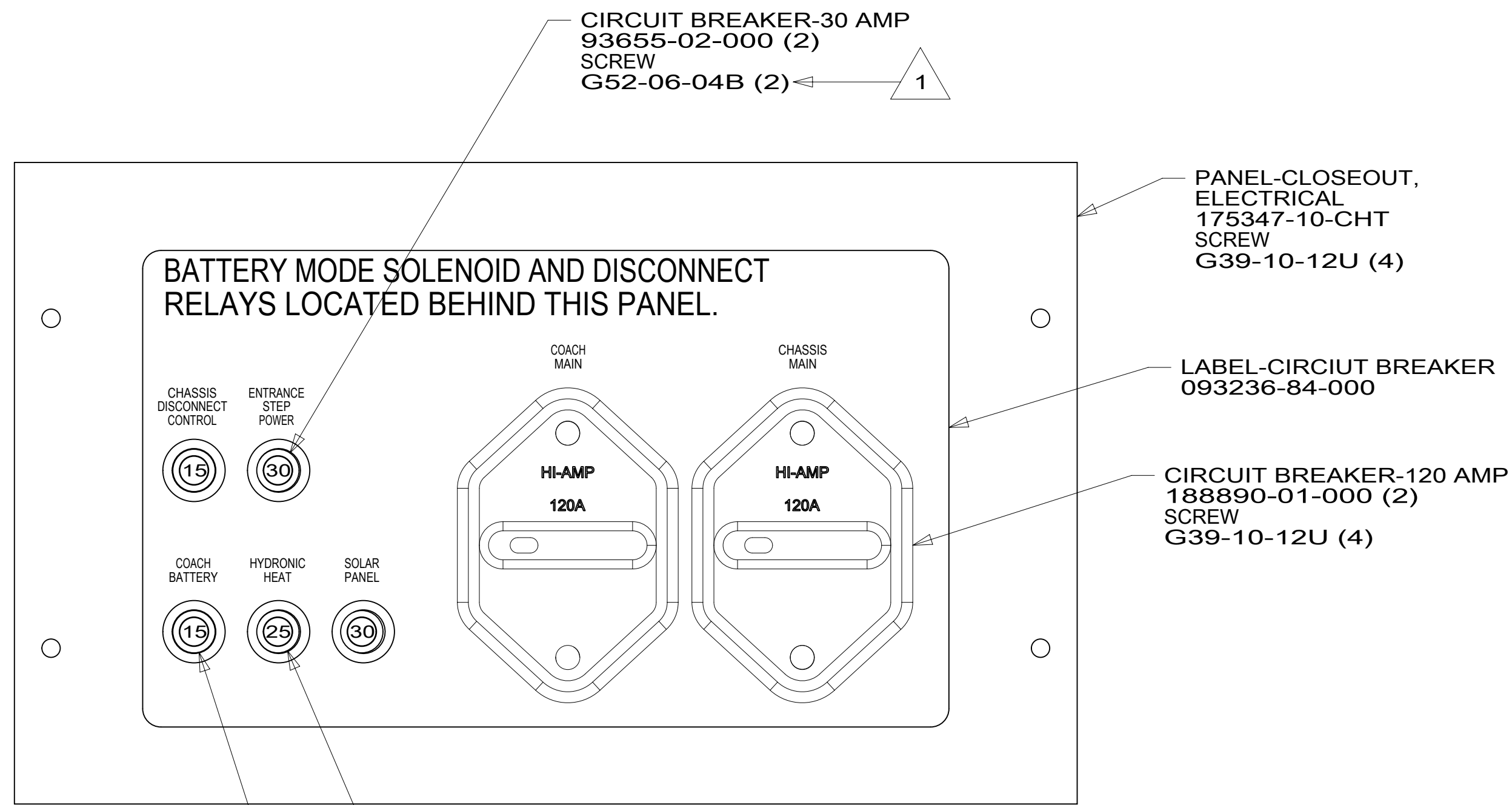
- 1A6 SEATS-DRIVER/PASSENGER
- 265 CODES/STANDARDS-CSA/CMVSS
- 1B1 CODES/STANDARDS USA

FOR ELECTRICAL TORQUE SPECIFICATIONS SEE DWG NO. 128783-01-000

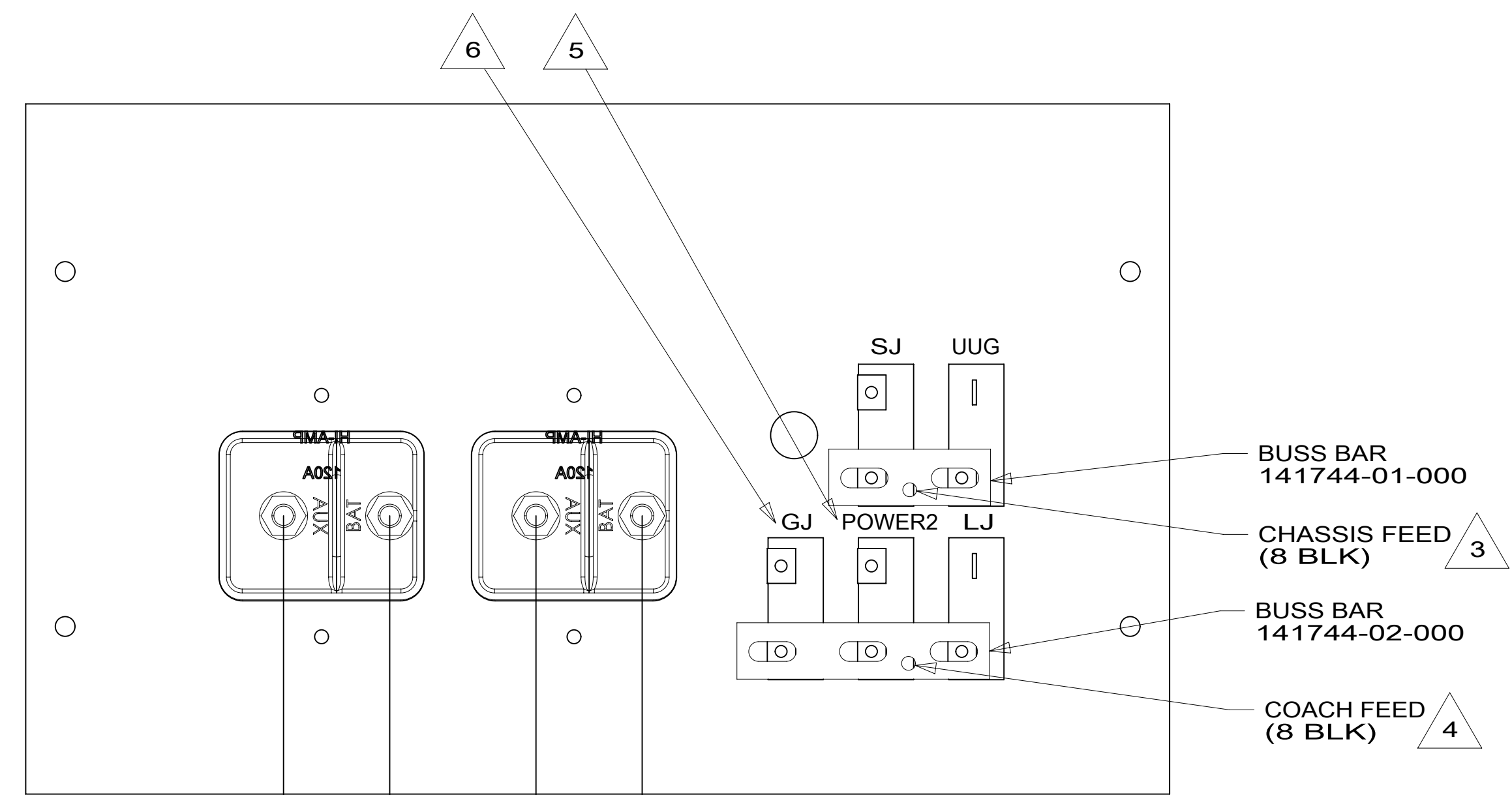
FOR ELECTRICAL CALLOUTS SEE DWG NO. 121339-01-000

DESCRIPTION: WIRING INSTL-CHASSIS		
SHEET: 2 OF 3	ITEM/PART NO: 000209847 / 30238001000	REV

8 7 6 5 4 3 2 1 11-May-2017



DETAIL CA



DETAIL CB

- NOTES:
- 6 MARKED WITH WHITE TAPE.
 - 5 MARKED WITH GREEN TAPE.
 - 4 MARKED WITH YELLOW TAPE.
 - 3 MARKED WITH BLUE TAPE.
 - 2 SEE BATTERY INSTL FOR ADDITIONAL INFORMATION.
 - 1 REPLACE EXISTING SCREW TO PROPERLY ATTACH BREAKER TO BUSS BAR.

FOR ELECTRICAL TORQUE SPECIFICATIONS SEE DWG NO. 128783-01-000

FOR ELECTRICAL CALLOUTS SEE DWG NO. 121339-01-000

265 CODES/STANDARDS-CSA/CMVSS
 1B1 CODES/STANDARDS USA

DESCRIPTION: WIRING INSTL-CHASSIS	
SHEET: 3 OF 3	ITEM/PART NO: 000209847 / 30238001000
REV 11-May-2017	