



	R45RL	ITEM
CABLE ASM (YEL) FROM COACH BATTERY FUSE TO STUD-JUMP START,RED	175207-52-073	1
CABLE ASM (YEL) FROM STUD-JUMP START,RED TO COACH SIDE OF AUX START SOLENOID	175207-52-003	2
CABLE ASM (ORG) FROM COACH BATTERY TO INVERTER FUSE	175207-66-005	3
CABLE ASM (BLK) FROM STUD-JUMP START,BLK TO FRAME RAIL GROUND	175211-01-009	4
CABLE ASM (ORG) FROM INVERTER FUSE TO INVERTER DISCONNECT	175207-67-024	5
CABLE ASM (ORG) FROM INVERTER DISCONNECT TO INVERTER	175207-65-004	17
CABLE ASM (BLK) FROM BATTERY TO INVERTER	175211-01-027	6
CABLE ASM (BLK) FROM COACH BATTERY TO FRAME RAIL GROUND	175211-02-072	7
CABLE ASM (PUR) FROM DISCONNECT SOLENOID TO CHASSIS FUSE PANEL	175207-15-010	8
CABLE ASM (PUR) FROM BATTERY SIDE OF DISCONNECT SOLENOID TO CHASSIS BATTERY FUSE	175207-35-007	9
CABLE ASM (BLU) FROM CHASSIS DISCONNECTED POWER FUSE TO LEVELING SYSTEM POWER	141416-26-120	10
CABLE ASM (BLK) FROM LEVELING SYSTEM TO FRAME RAIL GROUND	133567-11-004	1
CABLE ASM (GRN) FROM BAT DISC RELAY TO PASS THRU STUD	175207-42-143	11
CABLE ASM (GRN) FROM PASS THRU STUD TO GENERATOR	175207-42-031	22
CABLE ASM (BLK) FROM GENERATOR TO FRAME RAIL GROUND	175211-02-022	23
CABLE ASM (YEL) JUMPER BETWEEN POSITIVE POSTS ON COACH BATTERY	141417-52-004	12
	141417-51-002 (4)	13
CABLE ASM (BLK) JUMPER BETWEEN NEGATIVE POSTS ON COACH BATTERY	133568-12-004	14
	133568-11-002 (4)	15
CABLE ASM (RED) JUMPER BETWEEN POSITIVE POSTS IN LEFT FRONT COMPT	141417-32-002	2
CABLE ASM-TEMPERATURE,BATTERY	175385-03-000	16
CABLE ASM (YEL) FROM BATTERY TO BATTERY FUSE	175207-52-007	18
CABLE ASM (PUR) FROM BATTERY TO BATTERY FUSE	CHASSIS SUPPLIED	19
CABLE ASM (YEL) FROM COACH DISCONNECT TO MULTIPLEX BREAKER	141415-57-004	20
CABLE ASM (PUR) FROM CHASSIS DISCONNECT TO MULTIPLEX BREAKER	141415-17-006	21
CABLE ASM (FROM COACH BREAKER TO MULTIPLEX PANEL)	189044-01-040	24
CABLE ASM (FROM CHASSIS BREAKER TO MULTIPLEX PANEL)	189044-02-040	25
CABLE ASM (FROM MULTIPLEX PANEL TO MULTIPLEX PANEL)	189044-01-004	

D

D

C

C

B

B

A

A



- 2 SEE WIRING INSTL-FRONT END FOR ADDITIONAL INFORMATION.
- 1 SEE LEVELING SYSTEM INSTL FOR ADDITIONAL INFORMATION.

NOTES:

- 265 CODES/STANDARDS-CSA/CMVSS
- 1B1 CODES/STANDARDS USA

FOR ELECTRICAL TORQUE SPECIFICATIONS SEE DWG NO. 128783-01-000

FOR ELECTRICAL CALLOUTS SEE DWG NO. 121339-01-000

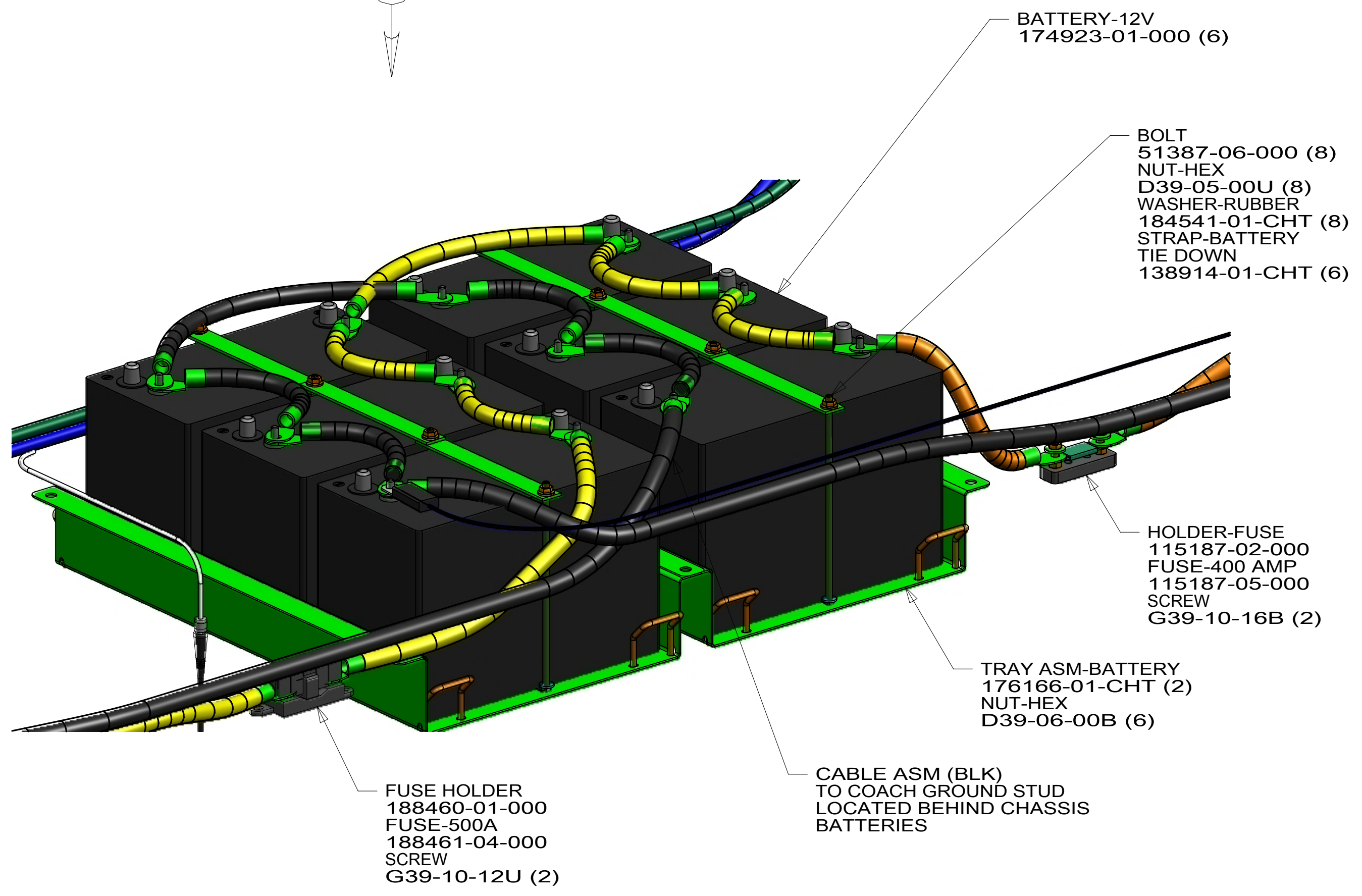
DESCRIPTION:	1B1 265 WIRING INSTL-CHASSIS		
SHEET:	2 OF 7	ITEM/PART NO:	000209695 / 30160301000
REV			



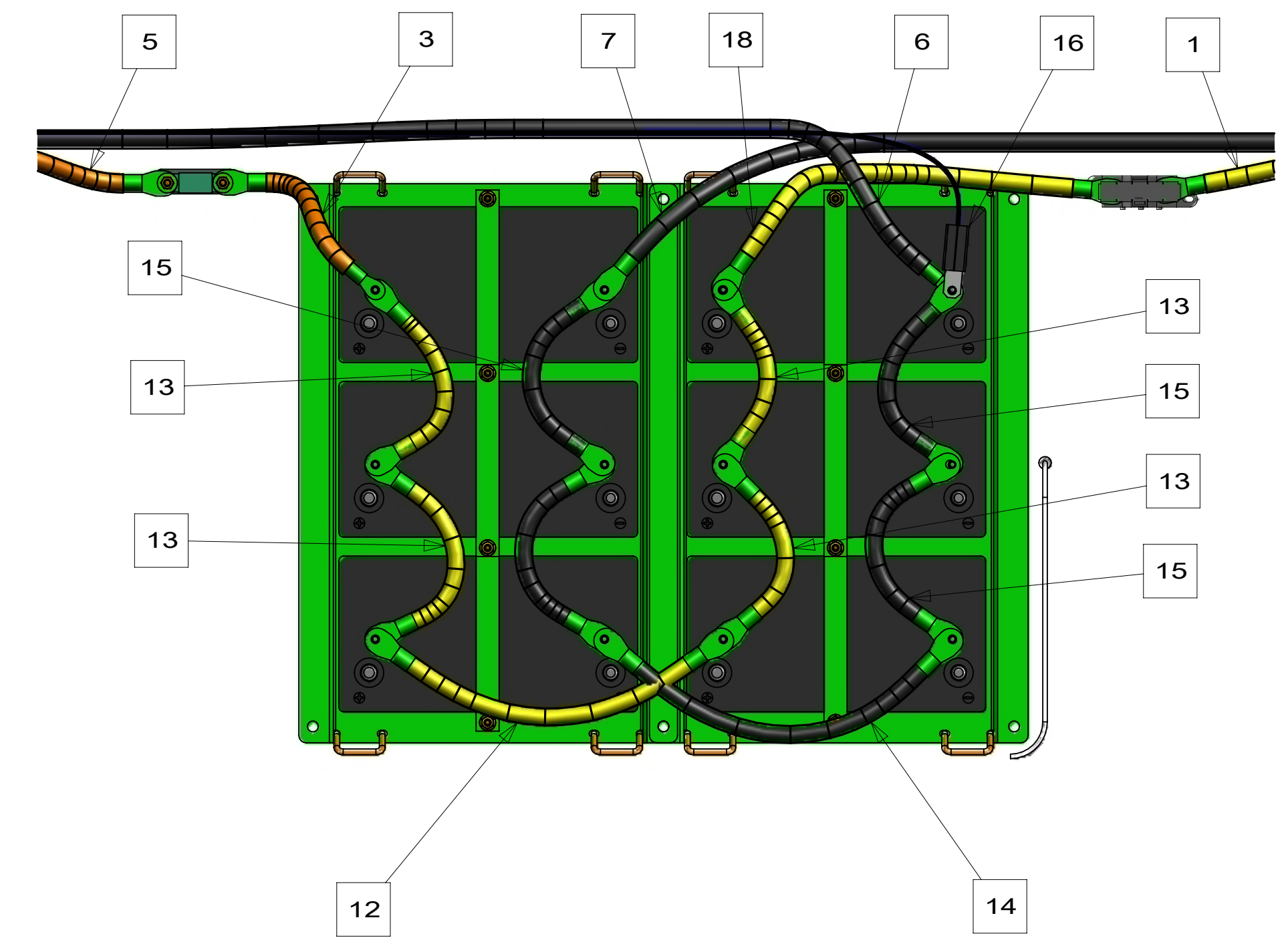
8 7 6 5 4 3 2 1

D
C
B
A

D
C
B
A



VIEW CA



VIEW CB

265 CODES/STANDARDS-CSA/CMVSS
1B1 CODES/STANDARDS USA

FOR ELECTRICAL TORQUE SPECIFICATIONS SEE DWG NO. 128783-01-000

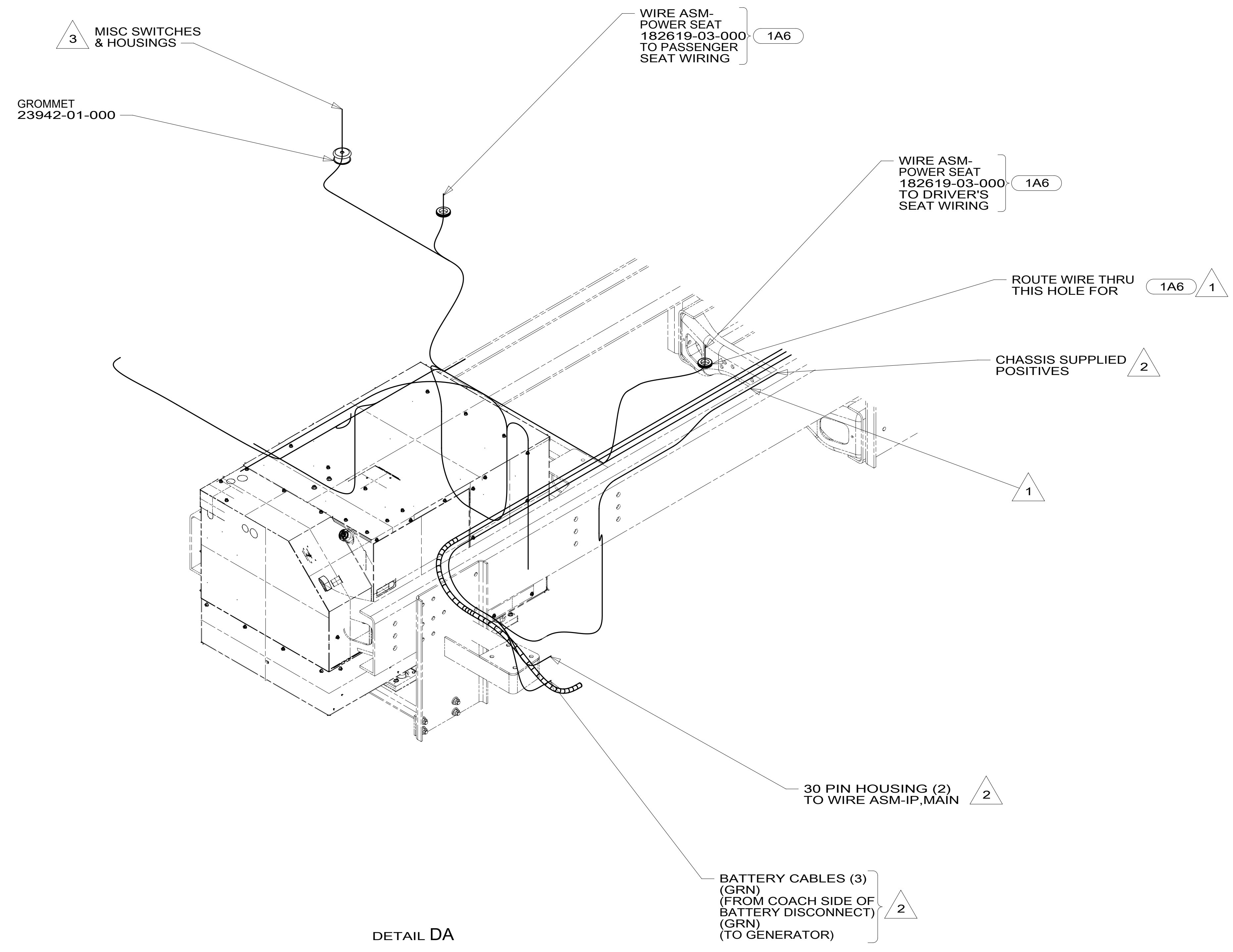
FOR ELECTRICAL CALLOUTS SEE DWG NO. 121339-01-000

DESCRIPTION:		1B1 265
WIRING INSTL-CHASSIS		
SHEET:	ITEM/PART NO.:	REV
3 OF 7	000209695 / 30160301000	

8 7 6 5 4 3 2 1 31-Mar-2017

8 7 6 5 4 3 2 1

D
C
B
A



- 3 SEE WIRE ASM-CHASSIS FOR ADDITIONAL INFORMATION.
- 2 SEE WIRING INSTL-FRONT END FOR ADDITIONAL INFORMATION.
- 1 USE PLUG-PLASTIC 61420-12-000 FOR UNUSED HOLE & SEAL.

NOTES:

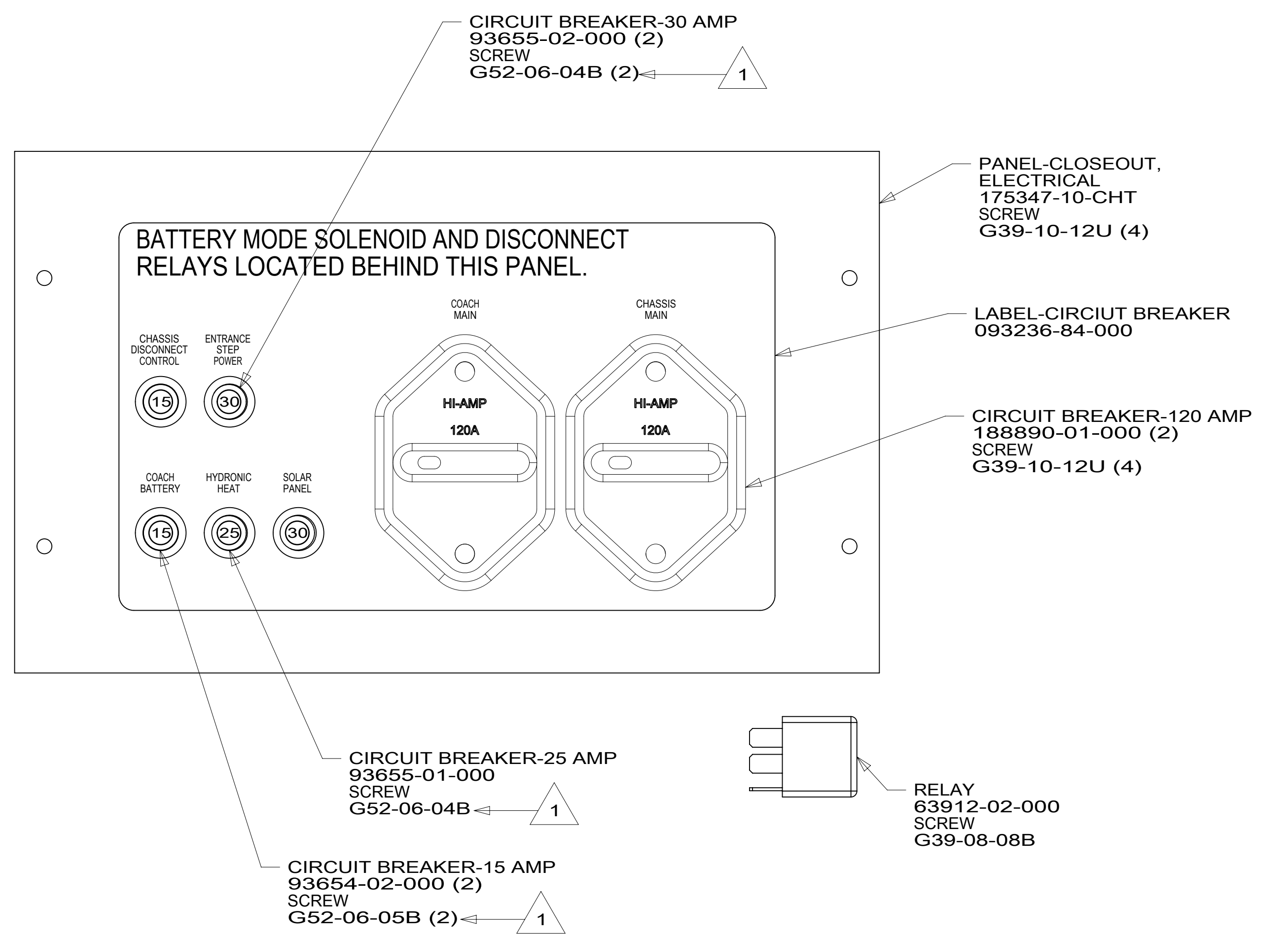
FOR ELECTRICAL TORQUE SPECIFICATIONS SEE DWG NO. 128783-01-000

FOR ELECTRICAL CALLOUTS SEE DWG NO. 121339-01-000

- 1A6 SEATS-DRIVER/PASSENGER
- 265 CODES/STANDARDS-CSA/CMVSS
- 1B1 CODES/STANDARDS USA

DESCRIPTION: WIRING INSTL-CHASSIS		
SHEET: 4 OF 7	ITEM/PART NO: 000209695 / 30160301000	REV

8 7 6 5 4 3 2 1 31-Mar-2017



CIRCUIT BREAKER-30 AMP
93655-02-000 (2)
SCREW
G52-06-04B (2) ← 1

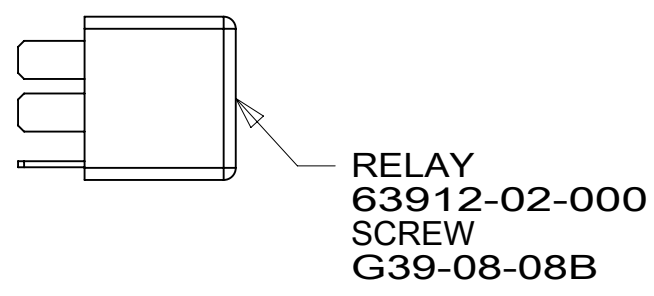
PANEL-CLOSEOUT,
ELECTRICAL
175347-10-CHT
SCREW
G39-10-12U (4)

LABEL-CIRCUIT BREAKER
093236-84-000

CIRCUIT BREAKER-120 AMP
188890-01-000 (2)
SCREW
G39-10-12U (4)

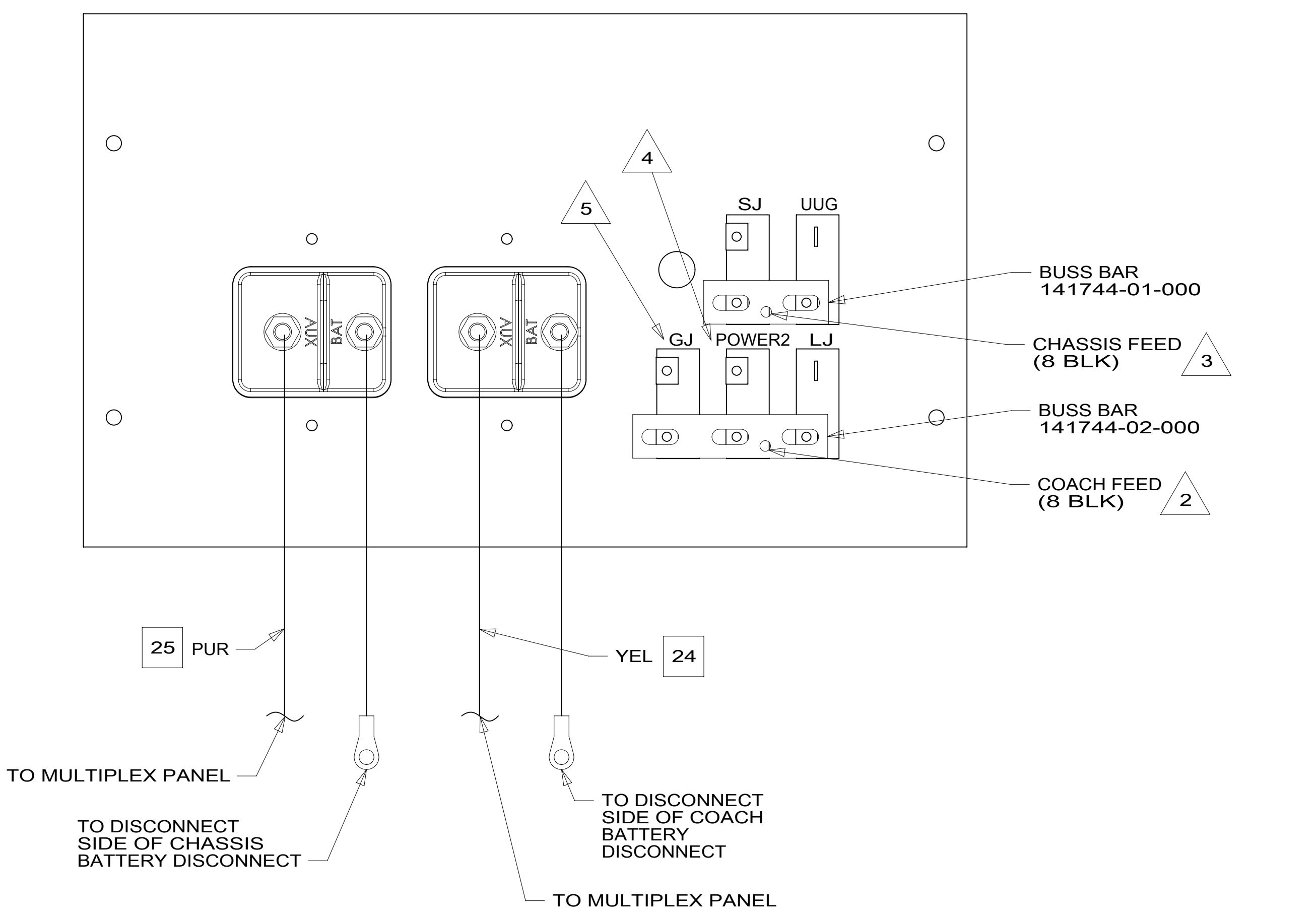
CIRCUIT BREAKER-25 AMP
93655-01-000
SCREW
G52-06-04B ← 1

CIRCUIT BREAKER-15 AMP
93654-02-000 (2)
SCREW
G52-06-05B (2) ← 1



RELAY
63912-02-000
SCREW
G39-08-08B

DETAIL EA
(FRONT VIEW)



25 PUR
TO MULTIPLEX PANEL
TO DISCONNECT
SIDE OF CHASSIS
BATTERY DISCONNECT

YEL 24
TO DISCONNECT
SIDE OF COACH
BATTERY
DISCONNECT
TO MULTIPLEX PANEL

DETAIL EA
(BACK VIEW)

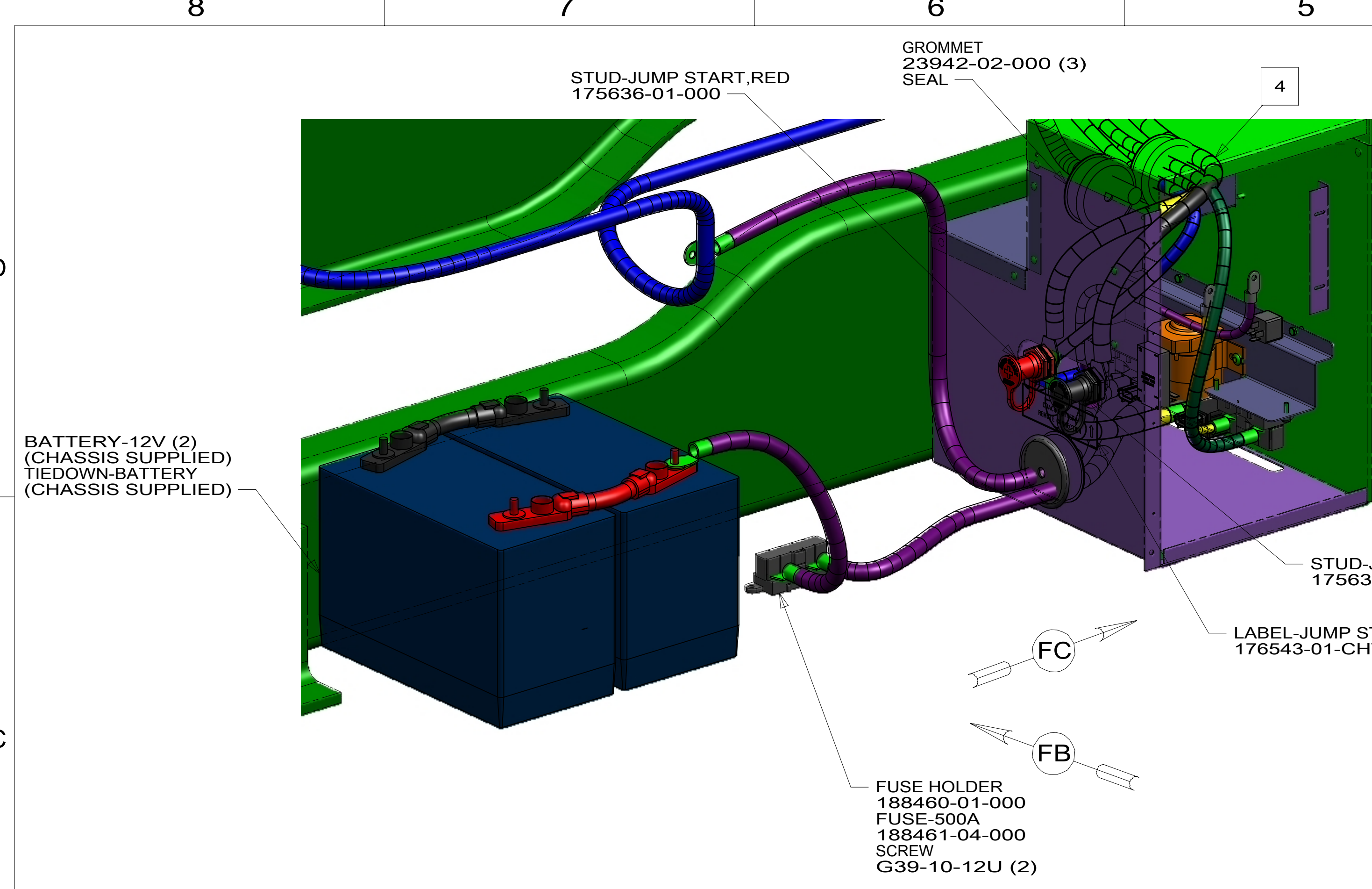
- NOTES:
- 5 MARKED WITH WHITE TAPE.
 - 4 MARKED WITH BLUE TAPE.
 - 3 MARKED WITH GREEN TAPE.
 - 2 MARKED WITH YELLOW TAPE.
 - 1 REPLACE EXISTING SCREW TO PROPERLY ATTACH BREAKER TO BUSS BAR.

FOR ELECTRICAL
TORQUE
SPECIFICATIONS
SEE DWG NO.
128783-01-000

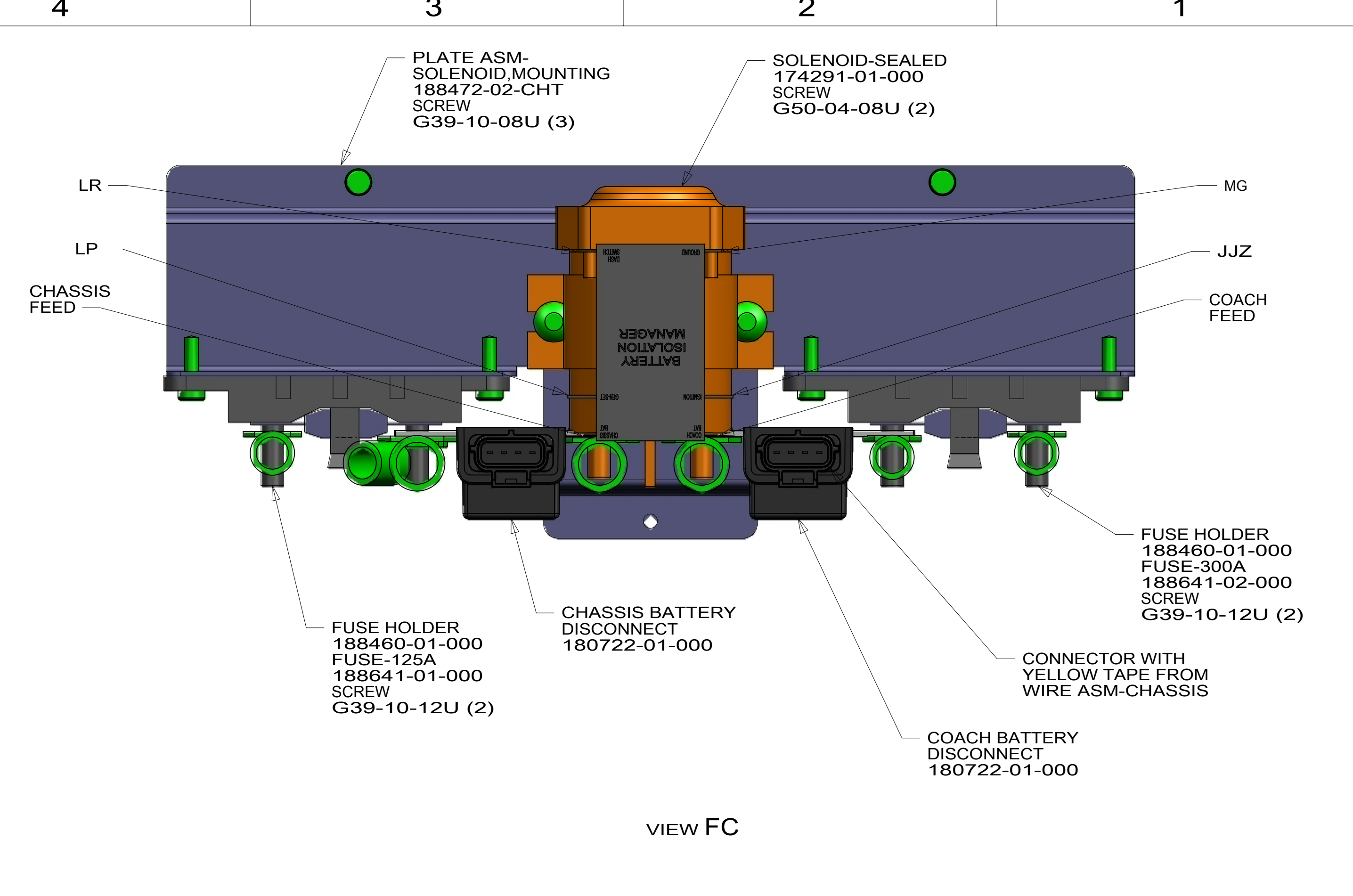
FOR
ELECTRICAL
CALLOUTS
SEE DWG NO.
121339-01-000

265 CODES/STANDARDS-CSA/CMVSS
1B1 CODES/STANDARDS USA

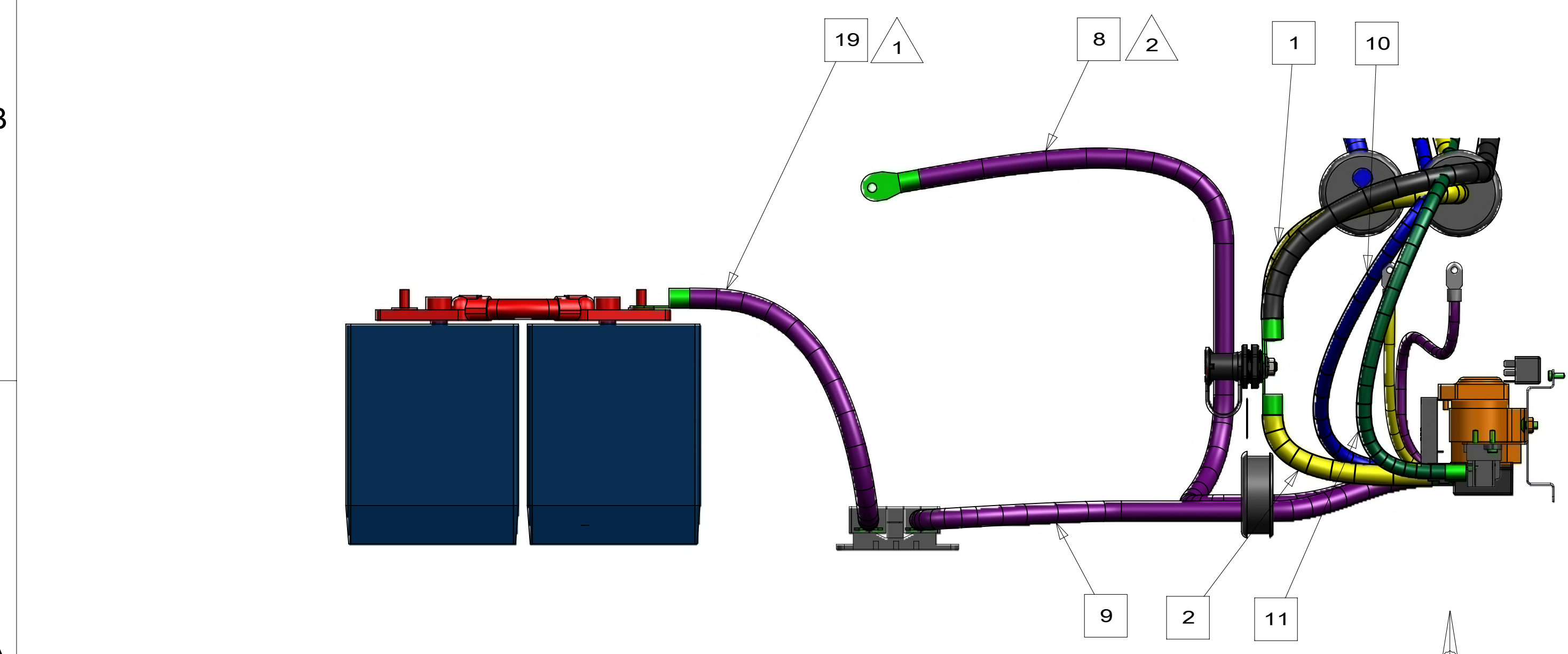
DESCRIPTION: WIRING INSTL-CHASSIS	
SHEET: 5 OF 7	ITEM/PART NO: 000209695 / 30160301000
REV	



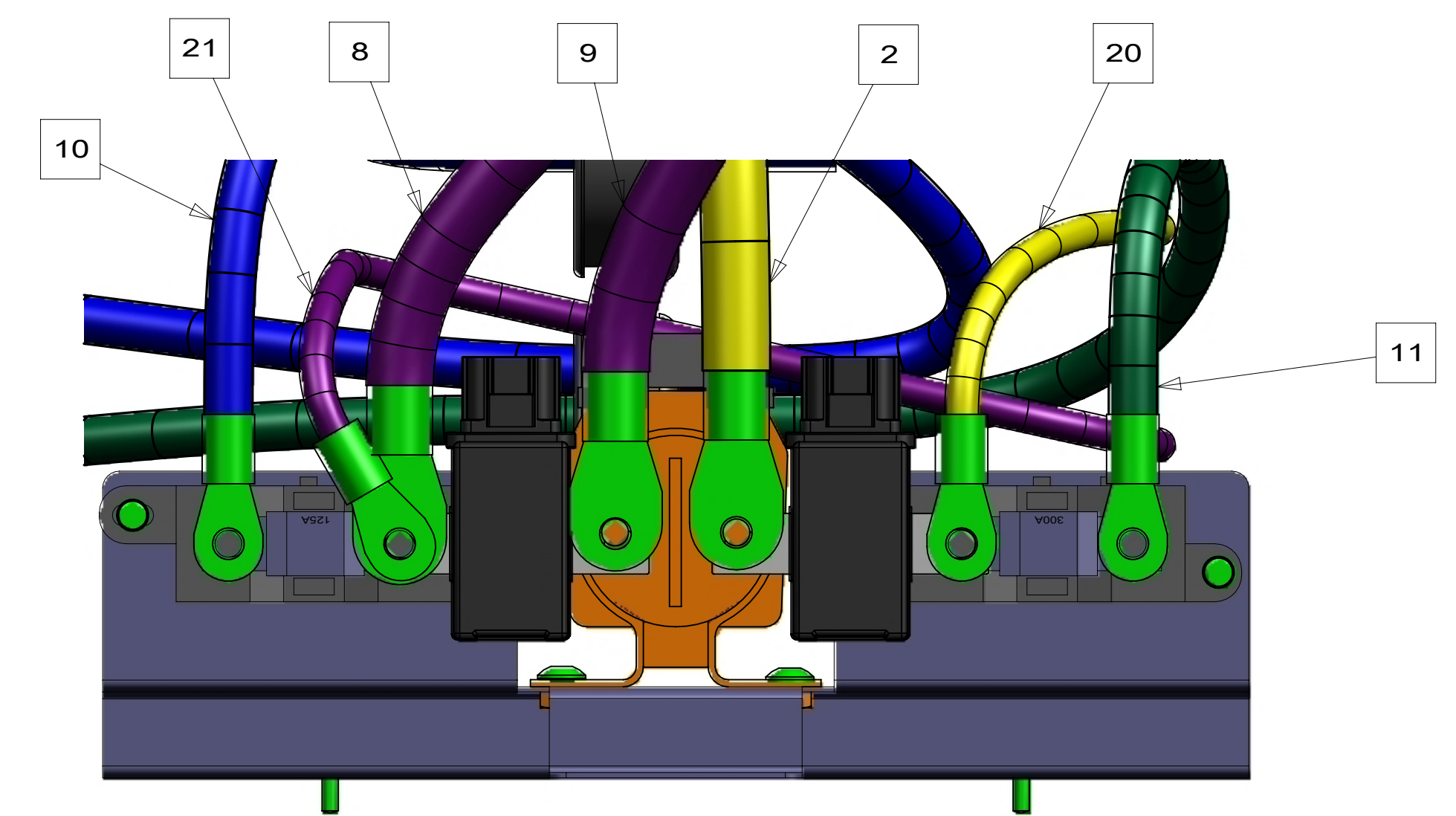
VIEW FA



VIEW FC



VIEW FB



VIEW FD

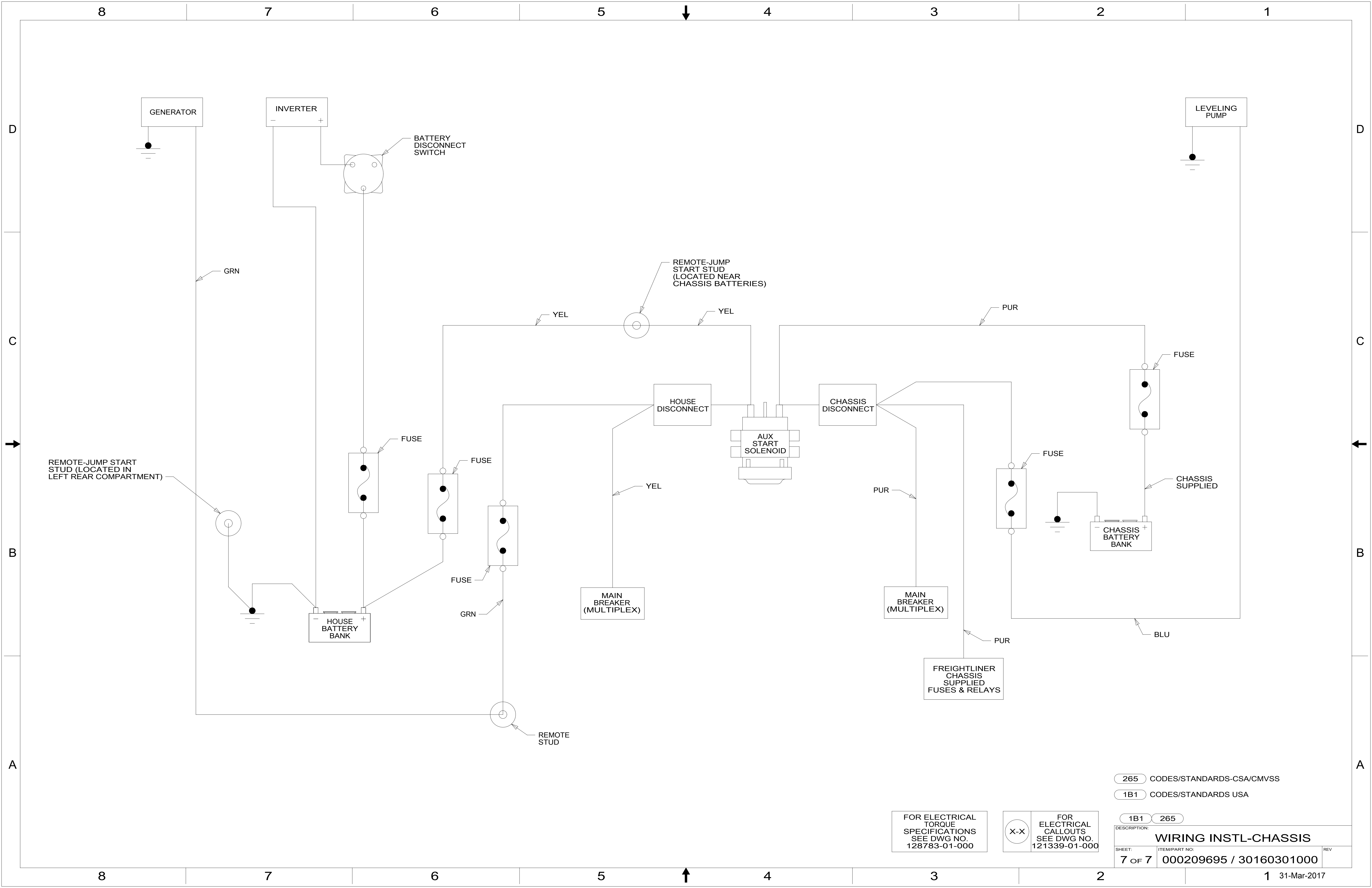
NOTES:
 2 PUR CABLE REPLACES CHASSIS SUPPLIED CABLE.
 1 REMOVE CABLE FROM CHASSIS PANEL AND INSTALL AS SHOWN ON FUSE.

FOR ELECTRICAL TORQUE SPECIFICATIONS SEE DWG NO. 128783-01-000

FOR ELECTRICAL CALLOUTS SEE DWG NO. 121339-01-000

265 CODES/STANDARDS-CSA/CMVSS
 1B1 CODES/STANDARDS USA

DESCRIPTION:		1B1	265
WIRING INSTL-CHASSIS			
SHEET:	ITEM/PART NO.:	REV	
6 OF 7	000209695 / 30160301000		



265 CODES/STANDARDS-CSA/CMVSS

1B1 CODES/STANDARDS USA

1B1 265

FOR ELECTRICAL TORQUE SPECIFICATIONS SEE DWG NO. 128783-01-000

FOR ELECTRICAL CALLOUTS SEE DWG NO. 121339-01-000

DESCRIPTION: WIRING INSTL-CHASSIS		
SHEET: 7 OF 7	ITEM/PART NO.: 000209695 / 30160301000	REV