

ROUTE CAMERA CABLE  
BEHIND SHOWER

ANTENNA-  
SATELLITE RADIO  
(CHASSIS SUPPLIED)  
PLATE-SATELLITE PREP  
177256-06-CHT  
177256-06-CHT  
SCREW  
G11-08-08U (4) } 6

EXTENSION-ANTENNA,  
SAT RADIO  
181908-04-000 } 6

MONITOR-POWER SUPPLY  
DETAIL AA

MONITOR-WINDSHIELD MOUNT  
000026027 / 315477-01-000 } 4

MONITOR-POWER SUPPLY  
SCREW  
G67-08-12U (2)

WIRE ASM-  
CHASSIS

ROUTED THROUGH  
FLOOR IN THIS AREA

1 2 CABLE ASM-MONITOR

3

1 CIRCUITS  
TR,UR,KE

ROUTE CAMERA  
CABLE BELOW  
BEDBOARD

DETAIL AA

- 6 REMOVE ANTENNA FROM CHASSIS CAB ROOF AND RELOCATE TO MAIN ROOF. USE ANTENNA EXTENSION BETWEEN CHASSIS ANTENNA CABLE AND ANTENNA WHEN RELOCATING ANTENNA. SECURE BOTH ENDS OF ANTENNA EXTENSION WITH TAPE.
- 5 ROUTE CAMERA CABLE, 6-PIN HSG, AND FUSE THROUGH HOLE IN CABINET. CONNECT TO MONITOR POWER SUPPLY.
- 4 ROUTE CAMERA WIRE ABOVE HEADLINER.
- 3 ROUTE CAMERA CABLE UP B-PILLAR.
- 2 ROUTE REAR MONITOR CAMERA CABLE ALONG FRAME RAIL WITH WIRE ASM-CHASSIS. SEE WIRING INSTL-CHASSIS FOR ADDITIONL INFORMATION.
- 1 SEE WIRE ASM-CHASSIS FOR ADDITIONAL INFORMATION.

NOTES:

265 CODES/STANDARDS-CSA/CMVSS

1B1 CODES/STANDARDS USA

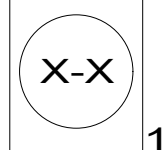
1B1 265



DSNR:		ALL DIMENSIONS ARE IN MILLIMETERS	
DIFFR:		MATERIAL:	
UNSPECIFIED TOLERANCES:			
WHOLE DIM (X)	: 3		
ONE-PLACE (X.X)	: 1.5		
TWO-PLACE (X.XX)	: 0.50		
ANGLE	: 1°		
REFER TO ES0018 FOR FASTENER TIGHTENING GUIDELINES		WEIGHT: (LBS)	FIRST USED:
			16 423T
DESCRIPTION: <b>RADIO/MONITOR INSTL</b>			
SHEET:	ITEM/PART NO:	REV:	
1 OF 3	000209578 / 30099901000		
REF:		1 04-Jan-2017	

FOR ELECTRICAL  
TORQUE  
SPECIFICATIONS  
SEE DWG NO.  
128783-01-000

FOR  
ELECTRICAL  
CALLOUTS  
SEE DWG NO.  
121339-01-000



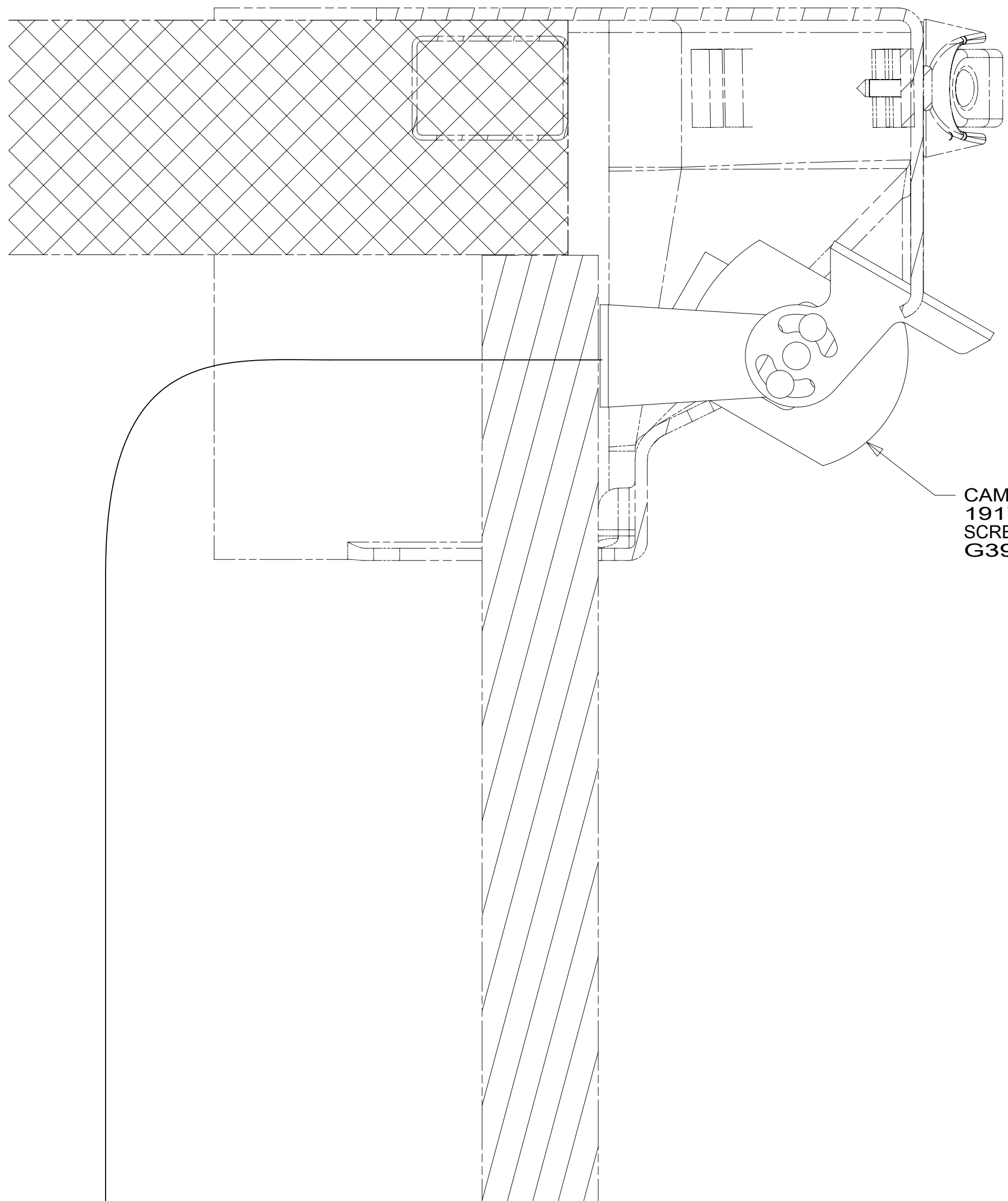
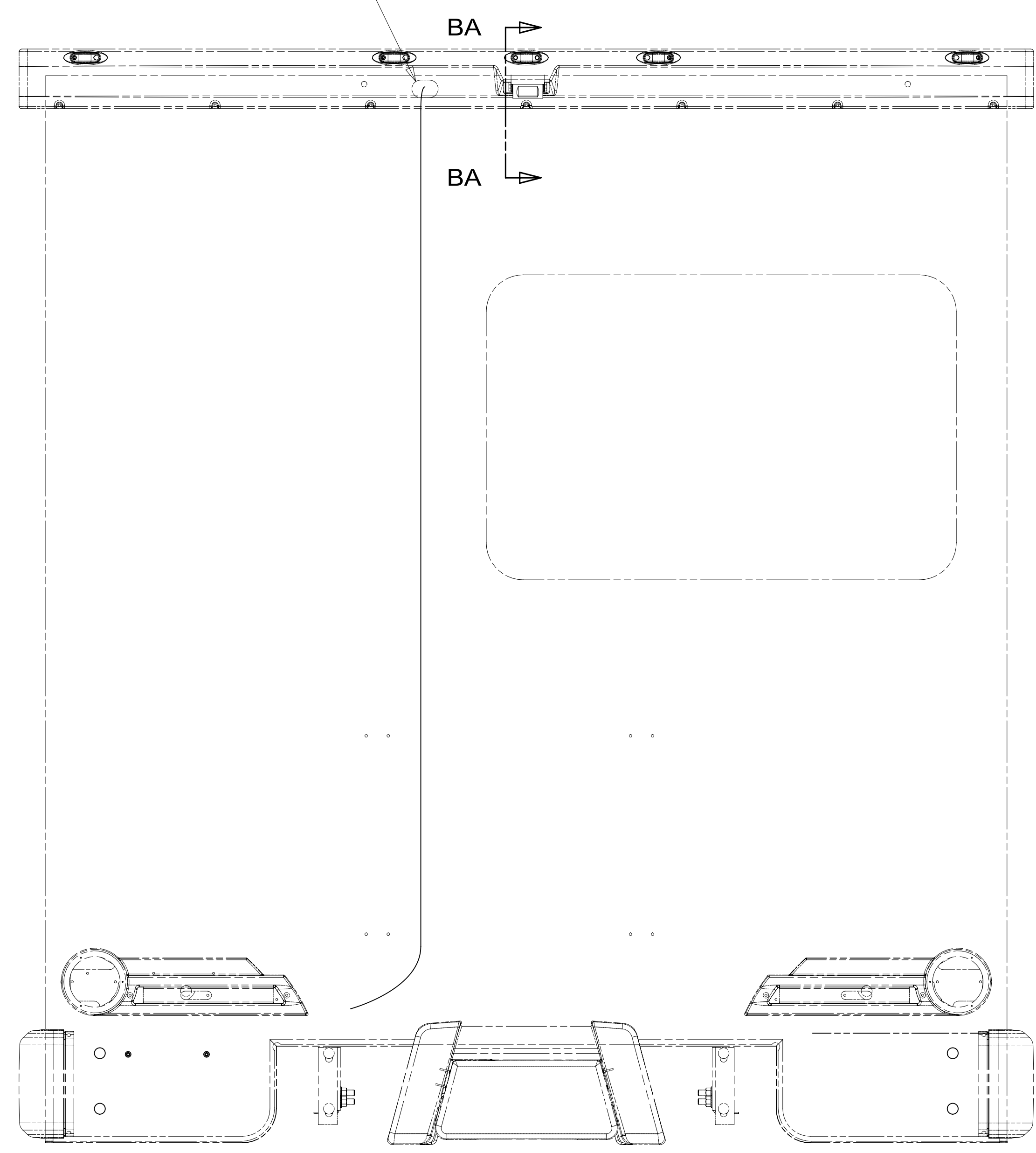
8 7 6 5 4 3 2 1



D

D

ROUTE CAMERA CABLE THROUGH BACKWALL



CAMERA-REAR, W/BRACKET  
191779-02-000  
SCREW  
G39-10-12U (5)

SECTION BA-BA

C

C



B

B

A

A

8 7 6 5 4 3 2 1

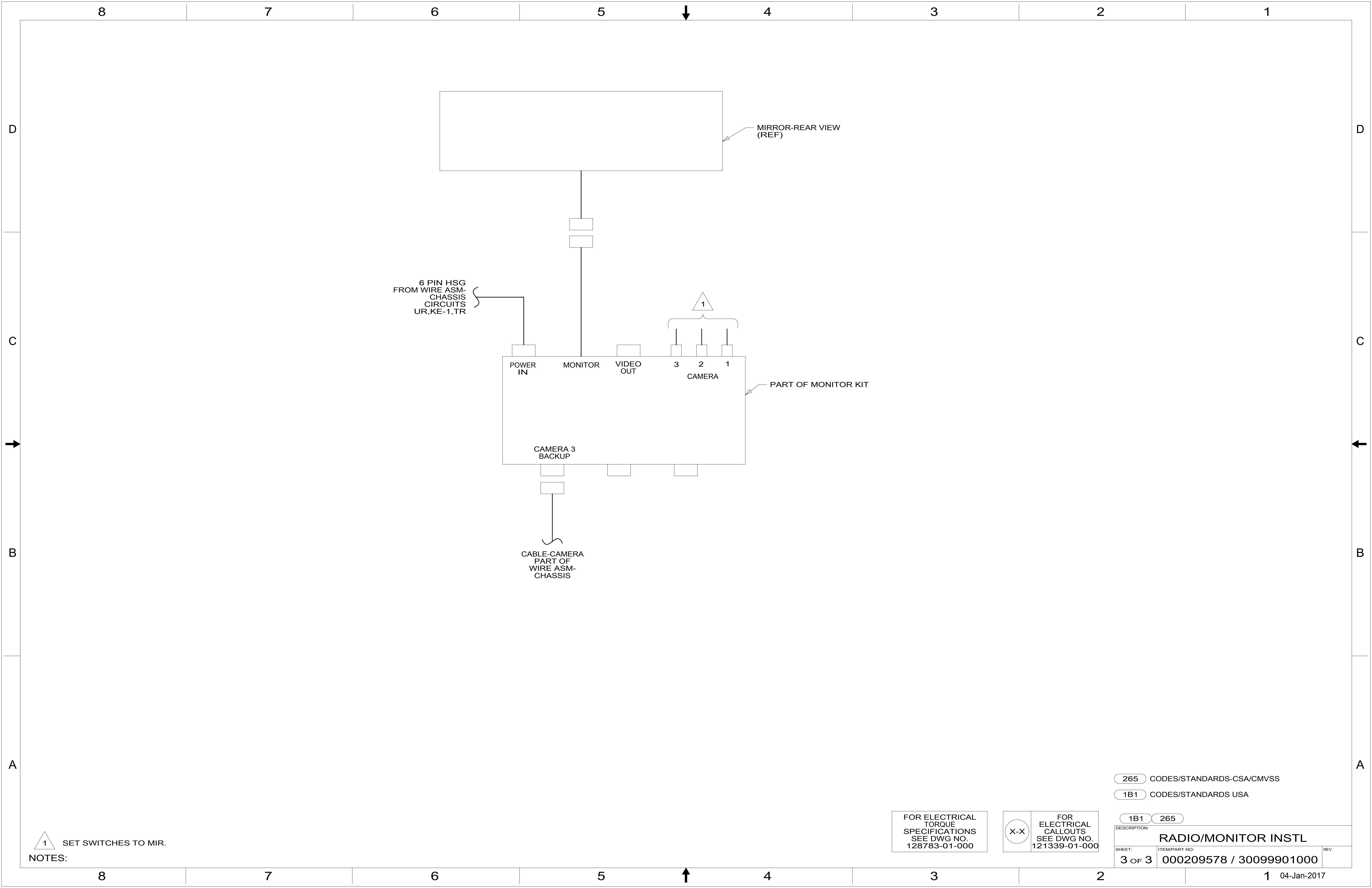


- 265 CODES/STANDARDS-CSA/CMVSS
- 1B1 CODES/STANDARDS USA

FOR ELECTRICAL TORQUE SPECIFICATIONS SEE DWG NO. 128783-01-000

FOR ELECTRICAL CALLOUTS SEE DWG NO. 121339-01-000

DESCRIPTION:		1B1	265
<b>RADIO/MONITOR INSTL</b>			
SHEET:	ITEM/PART NO.:	REV	
2 OF 3	000209578 / 30099901000		



6 PIN HSG  
FROM WIRE ASM-  
CHASSIS  
CIRCUITS  
UR,KE-1,TR

MIRROR-REAR VIEW  
(REF)

POWER IN MONITOR VIDEO OUT  
3 2 1  
CAMERA

PART OF MONITOR KIT

CAMERA 3  
BACKUP

CABLE-CAMERA  
PART OF  
WIRE ASM-  
CHASSIS

1 SET SWITCHES TO MIR.  
NOTES:

FOR ELECTRICAL  
TORQUE  
SPECIFICATIONS  
SEE DWG NO.  
128783-01-000

FOR  
ELECTRICAL  
CALLOUTS  
SEE DWG NO.  
121339-01-000

265 CODES/STANDARDS-CSA/CMVSS  
1B1 CODES/STANDARDS USA

DESCRIPTION:		1B1 265
<b>RADIO/MONITOR INSTL</b>		
SHEET:	ITEM/PART NO.:	REV
3 OF 3	000209578 / 30099901000	