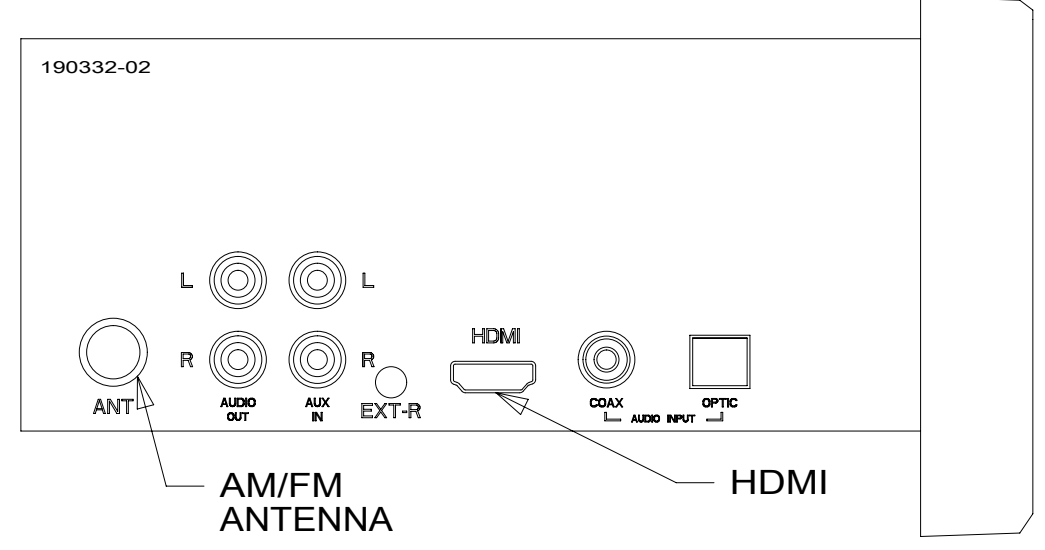
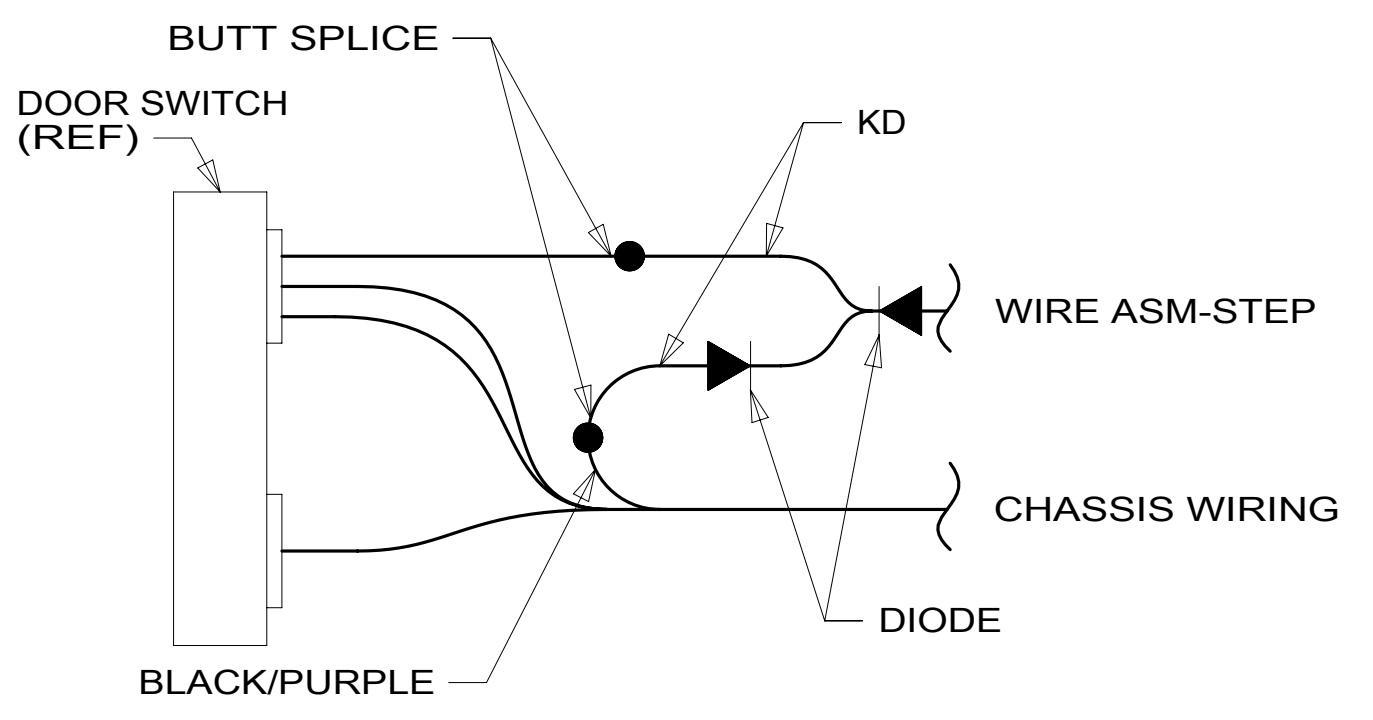


DETAIL AA 1E2



DETAIL AB



DETAIL AC 1E2

- 10 PREP BOTH SURFACES WITH ADHESIVE-PROMOTER 087211-01-000.
- 9 COVER ALL WIRES AND CABLES WITH CONVOLUTED TUBING. SECURE TO TV BRACKET SO THAT WIRES AND CABLES DO NOT BECOME PINCHED.
- 8 SEE WIRE ASM-SOLAR SYSTEM AND WIRE INSTL-CHASSIS FOR ADDITIONAL INFORMATION.
- 7 SEE STEP INSTALLATION FOR ADDITIONAL INFORMATION.
- 6 6 & 8 PIN HOUSINGS SUPPLIED WITH STEP.
- 5 WIRES ARE PART OF WIRE ASM-STEP.
- 4 MOUNT ON EXTERIOR SURFACE OF VAN SIDEWALL.
- 3 PLACE CROSS LOCATOR ON SENSORS OVER DIMPLES ON TANK.

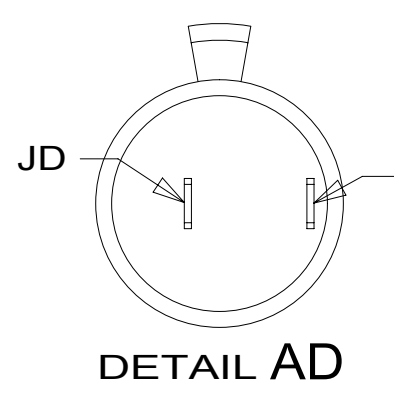
2. ROUTE TANK SENSOR WIRES SO THEY DO NOT PASSOVER SENSORS. USE WIRE TIE MOUNT 155366-01-000 AND WIRE TIE 8343-01-000 AS NEEDED. TANK SURFACE MUST BE CLEANED USING ISOPROPYL ALCOHOL AND PRIMED WITH PRIMER 94.
1. AT MINIMUM ALL WIRES TO BE SUPPORTED AND SECURED PER CODE REQUIREMENTS. USE CLAMP 10495 OR 10497 OR WIRE TIE 8343 OR 108046 AND SCREW G67-XX-XXX OR G56-XX-XXX AS APPROPRIATE FOR INSTALLATION.

NOTES:

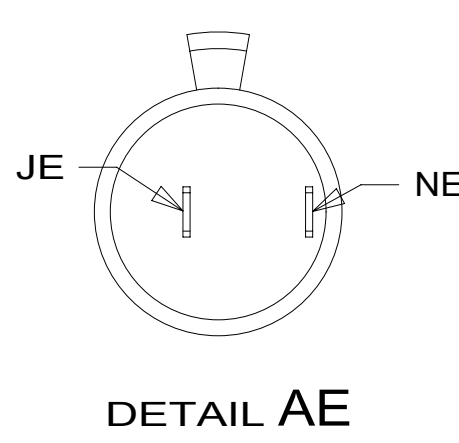
- TV-24" HDTV, 12 VDC
000031269 / 316937-01-000
- WIRE ASM-TV POWER
191991-01-000
- ADAPTOR-COAX 90°
176986-01-000
- BRACKET ASM-MNTNG.TV,24INSIGN
000181766 / 302577-01-CHT
- TAPE-FOAM,DBL
076322-21-000 (300 MM)
- NUT
000D65-10-00U (4)
- SCREW
OMG02U-04-012 (4)
- WASHER
OME02U-04-071 (4)
- SPACER-NYLON
086285-01-000 (4)
- CONVOLUTE
041953-01-000 (1200 MM)

- 1E2 KD TO DOOR SWITCH
DETAIL AC
- SWITCH
DETAIL CE
- 3 WIRE ASM-WATER TANK
151317-01-000

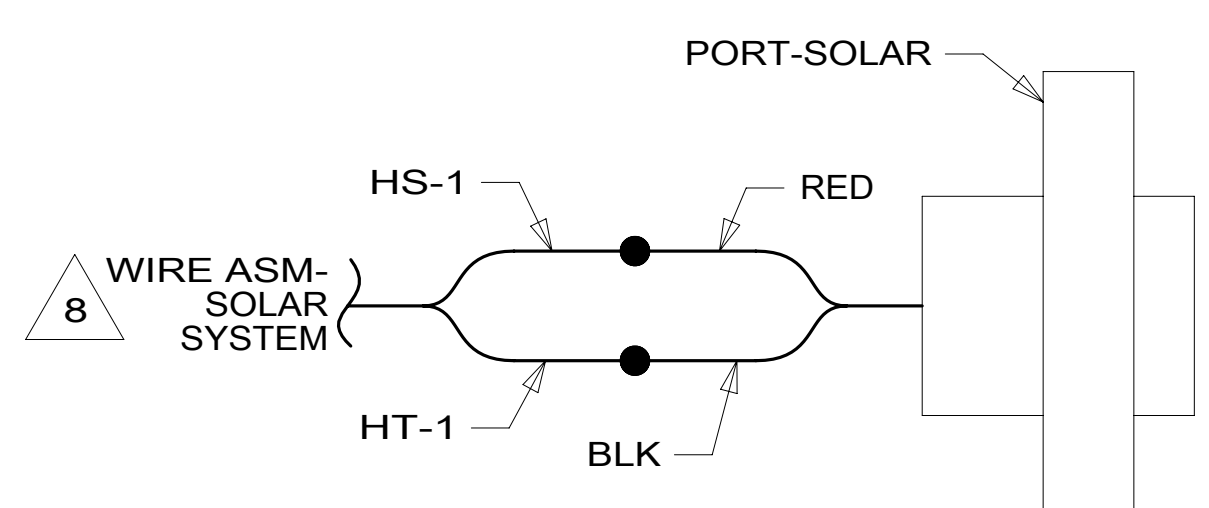
- TO LEFT SIDE
- USB-CHARGER DUAL,DC
188312-01-000
DETAIL AE



DETAIL AD

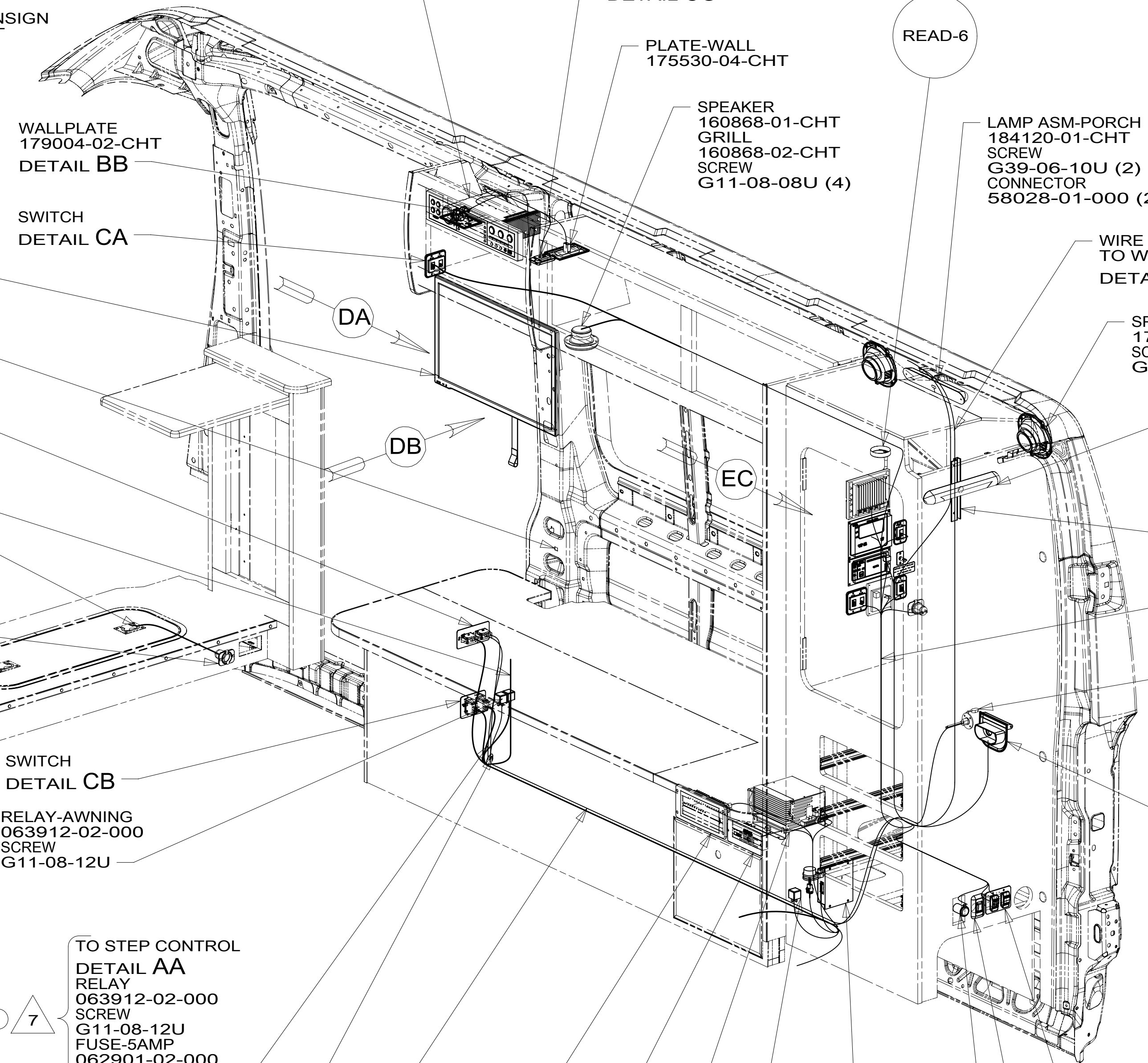


DETAIL AE



DETAIL AF 282

- RADIO
190332-02-CHT
SCREW
76790-03-000 (4)
DETAIL AB



- TO STEP CONTROL
DETAIL AA
RELAY
063912-02-000
SCREW
G11-08-12U
FUSE-5AMP
062901-02-000
WIRE ASM-STEP
300024-01-000

- TO WIRE ASM-CHASSIS
- 07B WIRE ASM-SWITCH,
RUN BOARD LT
300018-01-000

- DISTRIBUTION PANEL
187831-01-CHT
SCREW
G11-08-12U (4)
DETAIL CM

- CONVERTER-45 AMP
184353-01-000
SCREW
G67-10-12U (3)
DETAIL CL

- WIRE ASM-HEATER RELAY
153891-01-000
RELAY
063912-02-000
SCREW
G11-08-12U

FOR ELECTRICAL TORQUE SPECIFICATIONS SEE DWG NO. 128783-01-000

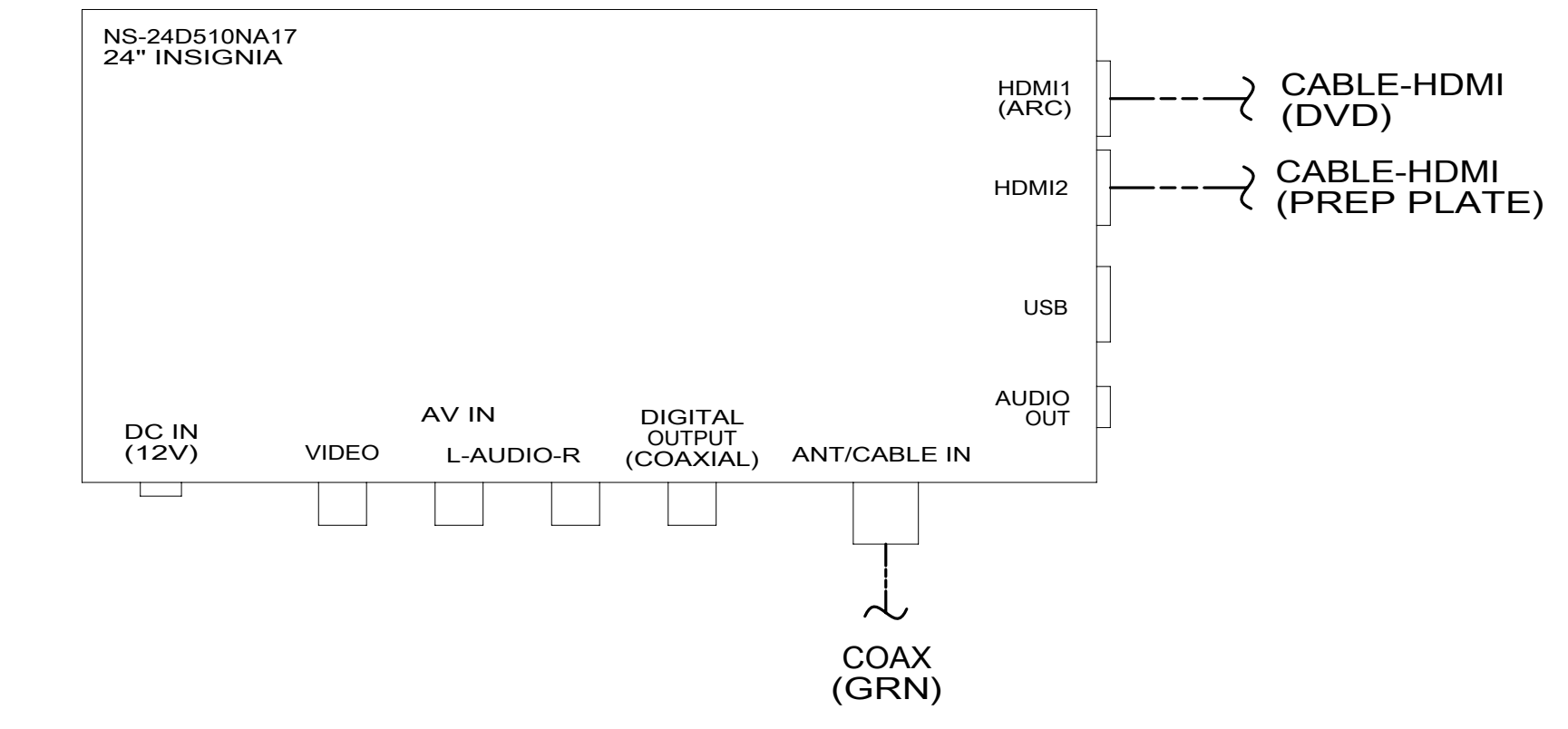
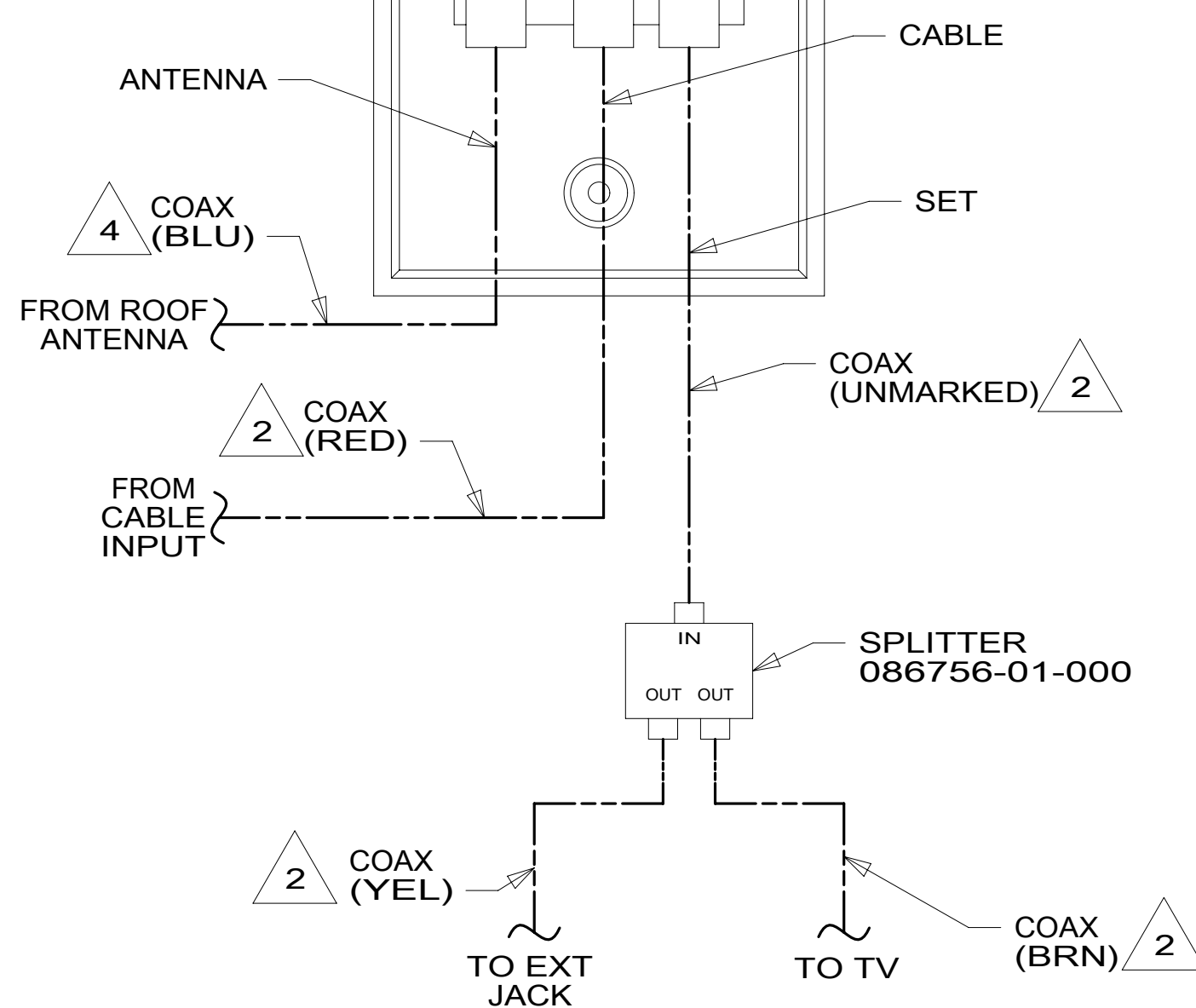
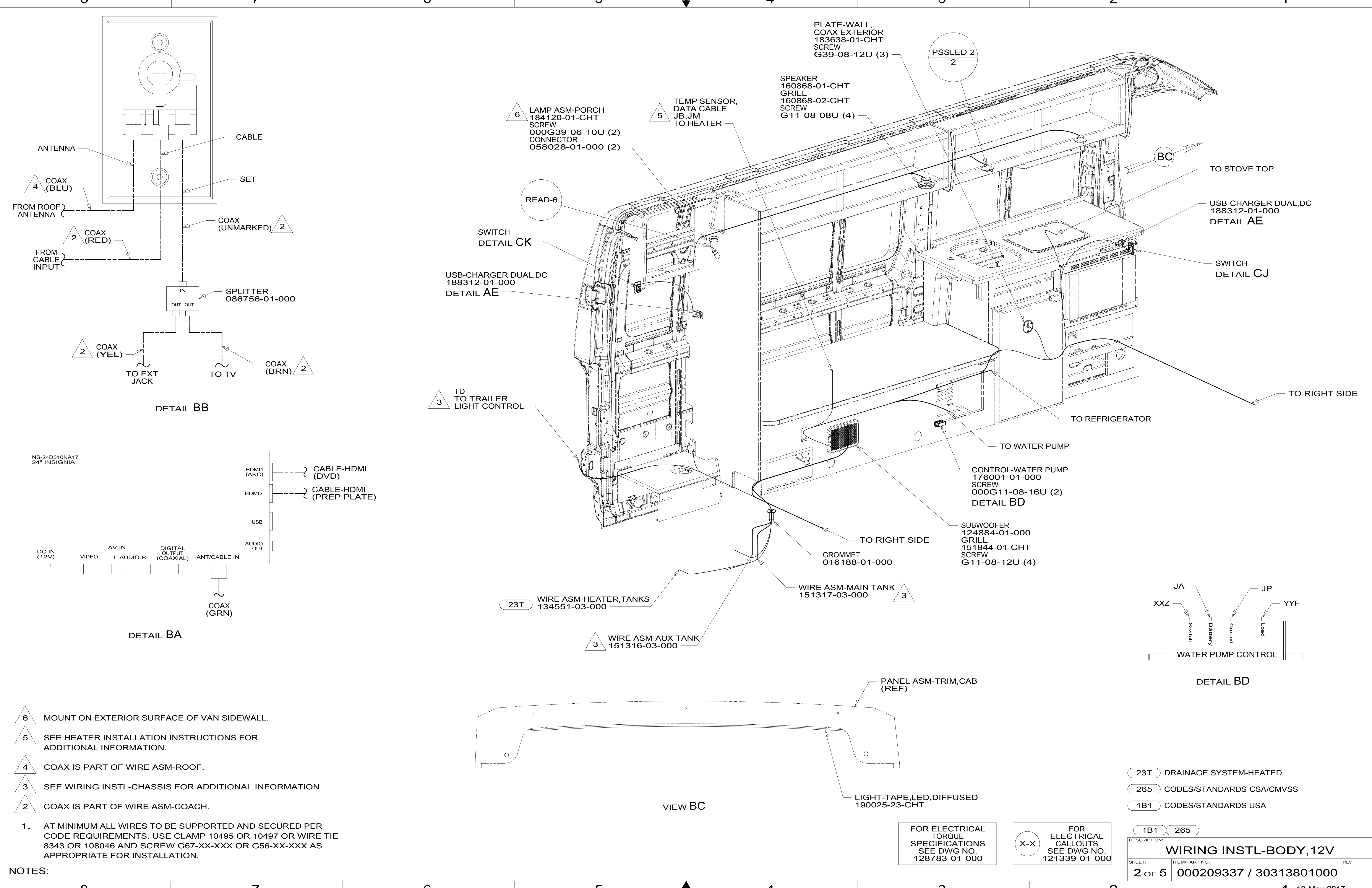
FOR ELECTRICAL CALLOUTS SEE DWG NO. 121339-01-000

- 07B RUNNING BOARDS - ALUMINUM
- 1E2 ENTRANCE STEP-ELEC.
- 23T DRAINAGE SYSTEM-HEATED
- 282 SOLAR PANEL - 100 WATT
- 265 CODES/STANDARDS-CSA/CMVSS
- 1B1 CODES/STANDARDS USA

1B1 265

COPYRIGHT 2016 WINNEBAGO INDUSTRIES, INC.

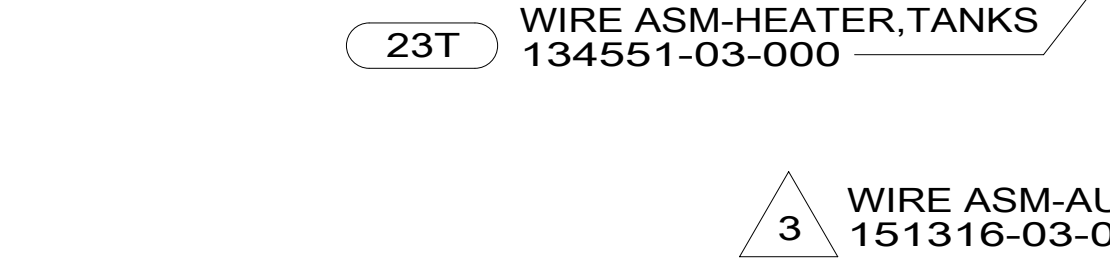
DSNR:	ALL DIMENSIONS ARE IN MILLIMETERS
DFFR:	
UNSPECIFIED TOLERANCES:	MATERIAL:
WHOLE DIM (X) :	3
ONE-PLACE (X.X) :	1.5
TWO-PLACE (X.XX) :	0.50
ANGLE :	1°
REFER TO ES0018 FOR FASTENER TIGHTENING GUIDELINES	WEIGHT: (LBS) FIRST USED:
	17 259K
DESCRIPTION: WIRING INSTL-BODY, 12V	
SHEET: 1 OF 5	ITEMPART NO: 000209337 / 30313801000
REF:	18-May-2017



- 6 MOUNT ON EXTERIOR SURFACE OF VAN SIDEWALL.
- 5 SEE HEATER INSTALLATION INSTRUCTIONS FOR ADDITIONAL INFORMATION.
- 4 COAX IS PART OF WIRE ASM-ROOF.
- 3 SEE WIRING INSTL-CHASSIS FOR ADDITIONAL INFORMATION.
- 2 COAX IS PART OF WIRE ASM-COACH.

1. AT MINIMUM ALL WIRES TO BE SUPPORTED AND SECURED PER CODE REQUIREMENTS. USE CLAMP 10495 OR 10497 OR WIRE TIE 8343 OR 108046 AND SCREW G67-XX-XXX OR G56-XX-XXX AS APPROPRIATE FOR INSTALLATION.

NOTES:

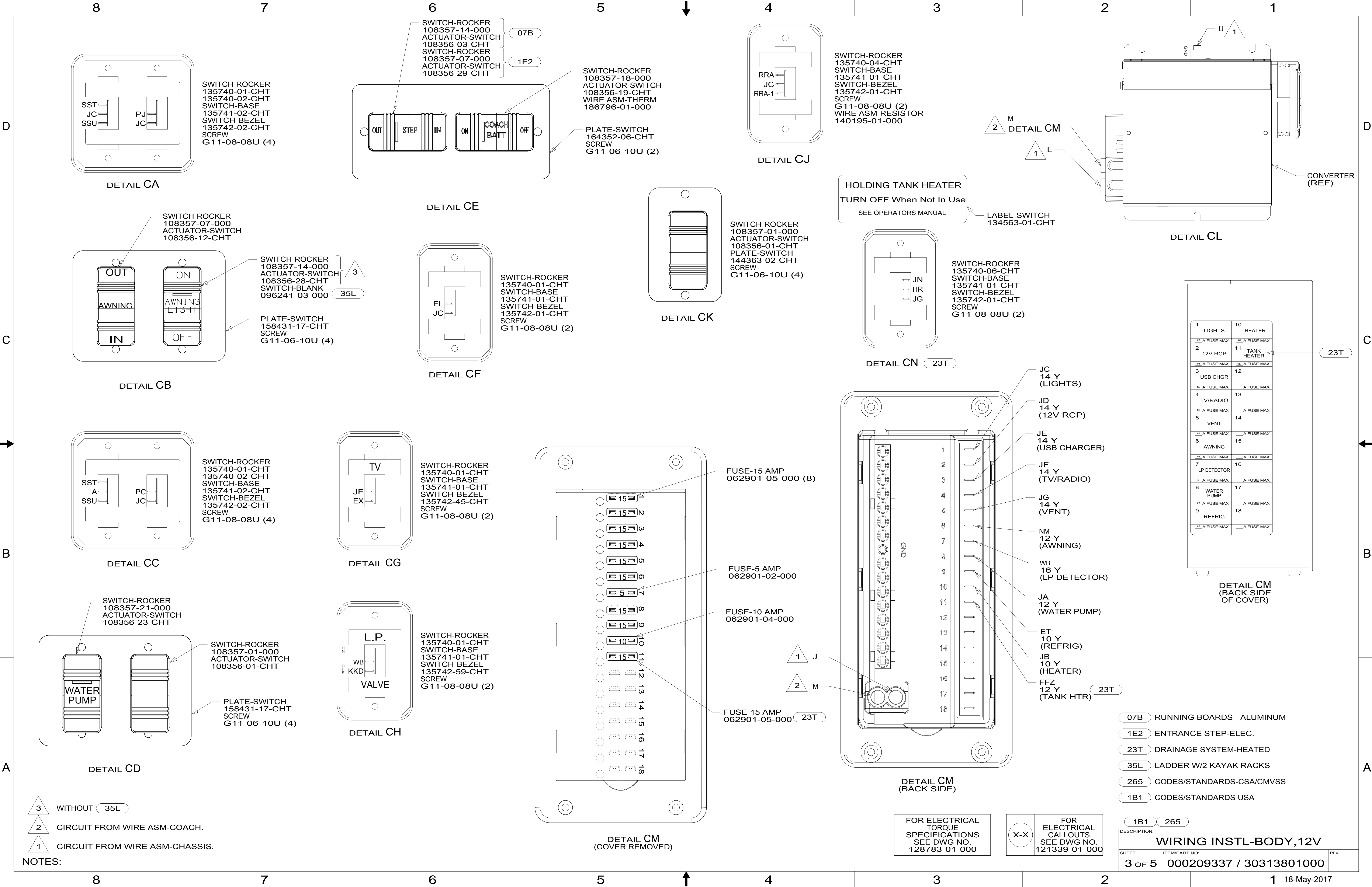


FOR ELECTRICAL TORQUE SPECIFICATIONS SEE DWG NO. 128783-01-000

FOR ELECTRICAL CALLOUTS SEE DWG NO. 121339-01-000

- 23T DRAINAGE SYSTEM-HEATED
- 265 CODES/STANDARDS-CSA/CMVSS
- 1B1 CODES/STANDARDS USA

DESCRIPTION:		1B1 265	
WIRING INSTL-BODY, 12V			
SHEET:	ITEM/PART NO.:	REV	
2 OF 5	000209337 / 30313801000		



SWITCH-ROCKER
135740-01-CHT
135740-02-CHT
SWITCH-BASE
135741-02-CHT
SWITCH-BEZEL
135742-02-CHT
SCREW
G11-08-08U (4)

SWITCH-ROCKER
108357-14-000
ACTUATOR-SWITCH
108356-03-CHT
SWITCH-ROCKER
108357-07-000
ACTUATOR-SWITCH
108356-29-CHT

SWITCH-ROCKER
108357-18-000
ACTUATOR-SWITCH
108356-19-CHT
WIRE ASM-THERM
186796-01-000

SWITCH-ROCKER
135740-04-CHT
SWITCH-BASE
135741-01-CHT
SWITCH-BEZEL
135742-01-CHT
SCREW
G11-08-08U (2)
WIRE ASM-RESISTOR
140195-01-000

SWITCH-ROCKER
108357-07-000
ACTUATOR-SWITCH
108356-12-CHT

SWITCH-ROCKER
108357-14-000
ACTUATOR-SWITCH
108356-28-CHT
SWITCH-BLANK
096241-03-000

PLATE-SWITCH
158431-17-CHT
SCREW
G11-06-10U (4)

SWITCH-ROCKER
135740-01-CHT
SWITCH-BASE
135741-01-CHT
SWITCH-BEZEL
135742-01-CHT
SCREW
G11-08-08U (2)

SWITCH-ROCKER
108357-01-000
ACTUATOR-SWITCH
108356-01-CHT
PLATE-SWITCH
144363-02-CHT
SCREW
G11-06-10U (4)

SWITCH-ROCKER
135740-06-CHT
SWITCH-BASE
135741-01-CHT
SWITCH-BEZEL
135742-01-CHT
SCREW
G11-08-08U (2)

SWITCH-ROCKER
135740-01-CHT
135740-02-CHT
SWITCH-BASE
135741-02-CHT
SWITCH-BEZEL
135742-02-CHT
SCREW
G11-08-08U (4)

SWITCH-ROCKER
135740-01-CHT
SWITCH-BASE
135741-01-CHT
SWITCH-BEZEL
135742-45-CHT
SCREW
G11-08-08U (2)

FUSE-15 AMP
062901-05-000 (8)

FUSE-5 AMP
062901-02-000

FUSE-10 AMP
062901-04-000

FUSE-15 AMP
062901-05-000 (23T)

SWITCH-ROCKER
108357-21-000
ACTUATOR-SWITCH
108356-23-CHT

SWITCH-ROCKER
108357-01-000
ACTUATOR-SWITCH
108356-01-CHT

PLATE-SWITCH
158431-17-CHT
SCREW
G11-06-10U (4)

SWITCH-ROCKER
135740-01-CHT
SWITCH-BASE
135741-01-CHT
SWITCH-BEZEL
135742-59-CHT
SCREW
G11-08-08U (2)

JC
14 Y
(LIGHTS)

JD
14 Y
(12V RCP)

JE
14 Y
(USB CHARGER)

JF
14 Y
(TV/RADIO)

JG
14 Y
(VENT)

NM
12 Y
(AWNING)

WB
16 Y
(LP DETECTOR)

JA
12 Y
(WATER PUMP)

ET
10 Y
(REFRIG)

JB
10 Y
(HEATER)

FFZ
12 Y
(TANK HTR)

1	LIGHTS	10	HEATER
2	12V RCP	11	TANK HEATER
3	USB CHGR	12	
4	TV/RADIO	13	
5	VENT	14	
6	AWNING	15	
7	LP DETECTOR	16	
8	WATER PUMP	17	
9	REFRIG	18	

DETAIL CM
(BACK SIDE
OF COVER)

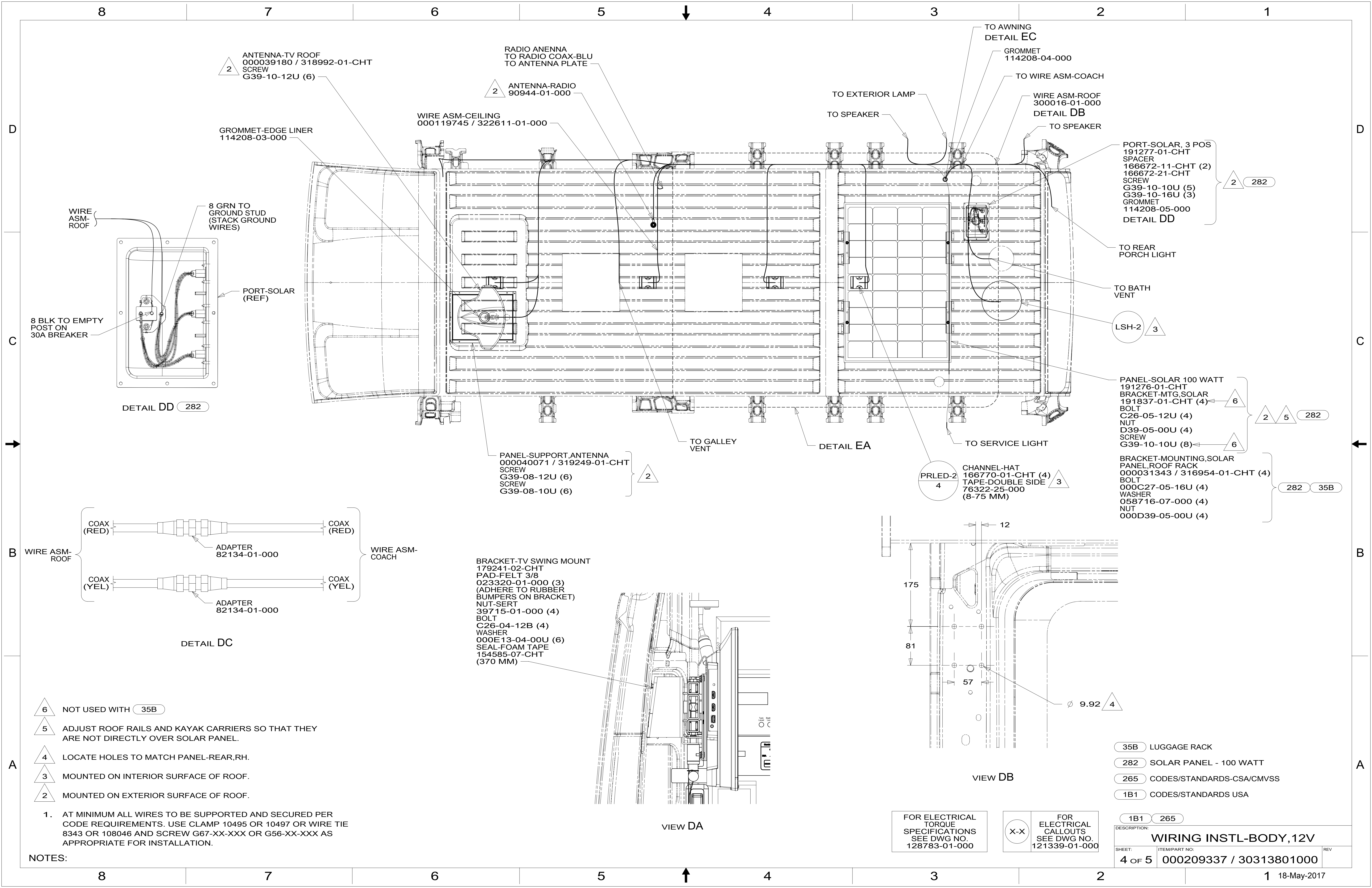
- 07B RUNNING BOARDS - ALUMINUM
- 1E2 ENTRANCE STEP-ELEC.
- 23T DRAINAGE SYSTEM-HEATED
- 35L LADDER W/2 KAYAK RACKS
- 265 CODES/STANDARDS-CSA/CMVSS
- 1B1 CODES/STANDARDS USA

NOTES:
 3 WITHOUT 35L
 2 CIRCUIT FROM WIRE ASM-COACH.
 1 CIRCUIT FROM WIRE ASM-CHASSIS.

FOR ELECTRICAL
TORQUE
SPECIFICATIONS
SEE DWG NO.
128783-01-000

FOR ELECTRICAL
CALLOUTS
SEE DWG NO.
121339-01-000

DESCRIPTION:
WIRING INSTL-BODY, 12V
 SHEET: 3 OF 5 ITEM/PART NO.: 000209337 / 30313801000 REV: 18-May-2017



ANTENNA-TV ROOF
000039180 / 318992-01-CHT
SCREW
G39-10-12U (6)

RADIO ANENNA
TO RADIO COAX-BLU
TO ANTENNA PLATE

ANTENNA-RADIO
90944-01-000

WIRE ASM-CEILING
000119745 / 322611-01-000

GROMMET-EDGE LINER
114208-03-000

TO AWNING
DETAIL EC

GROMMET
114208-04-000

TO WIRE ASM-COACH

WIRE ASM-ROOF
300016-01-000
DETAIL DB

TO EXTERIOR LAMP
TO SPEAKER

TO SPEAKER

PORT-SOLAR, 3 POS
191277-01-CHT
SPACER
166672-11-CHT (2)
166672-21-CHT
SCREW
G39-10-10U (5)
G39-10-16U (3)
GROMMET
114208-05-000
DETAIL DD

TO REAR
PORCH LIGHT

TO BATH
VENT

LSH-2

PANEL-SOLAR 100 WATT
191276-01-CHT
BRACKET-MTG.SOLAR
191837-01-CHT (4)
BOLT
C26-05-12U (4)
NUT
D39-05-00U (4)
SCREW
G39-10-10U (8)

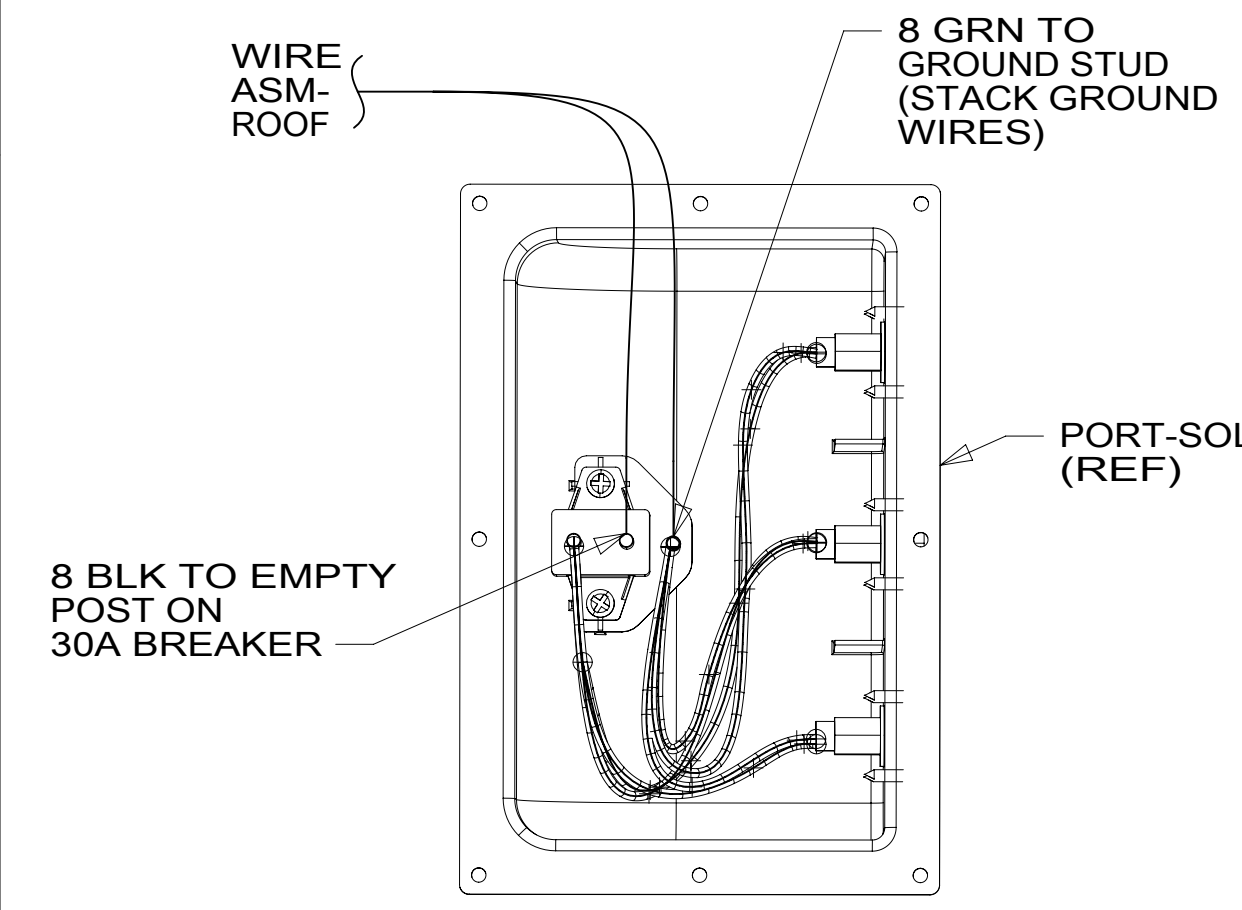
BRACKET-MOUNTING,SOLAR
PANEL,ROOF RACK
000031343 / 316954-01-CHT (4)
BOLT
000C27-05-16U (4)
WASHER
058716-07-000 (4)
NUT
000D39-05-00U (4)

PANEL-SUPPORT,ANTENNA
000040071 / 319249-01-CHT
SCREW
G39-08-12U (6)
SCREW
G39-08-10U (6)

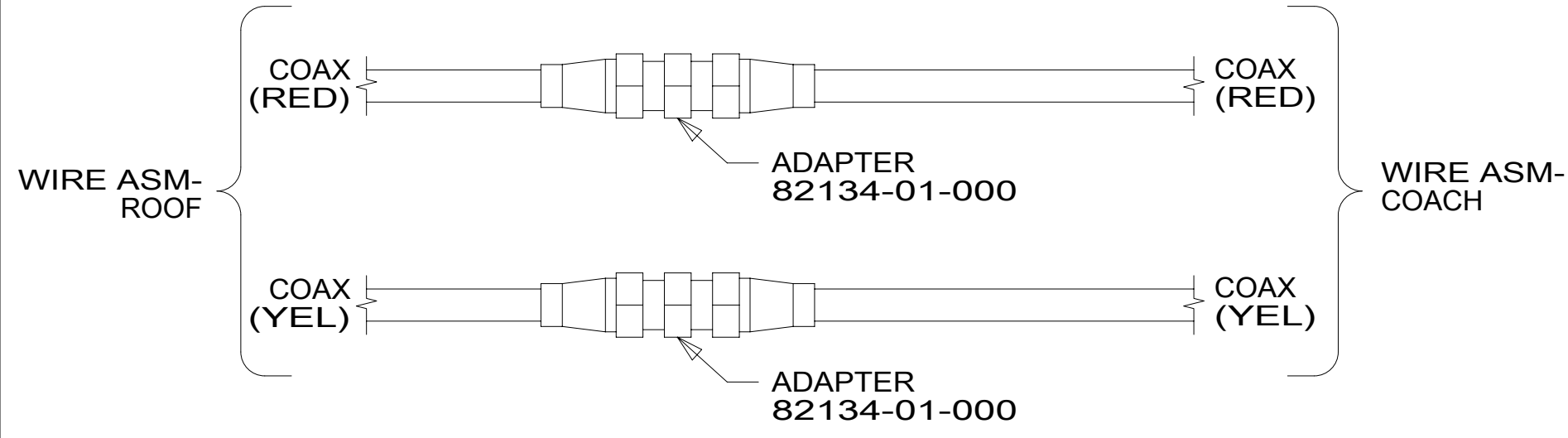
TO GALLEY
VENT

CHANNEL-HAT
166770-01-CHT (4)
TAPE-DOUBLE SIDE
76322-25-000
(8-75 MM)

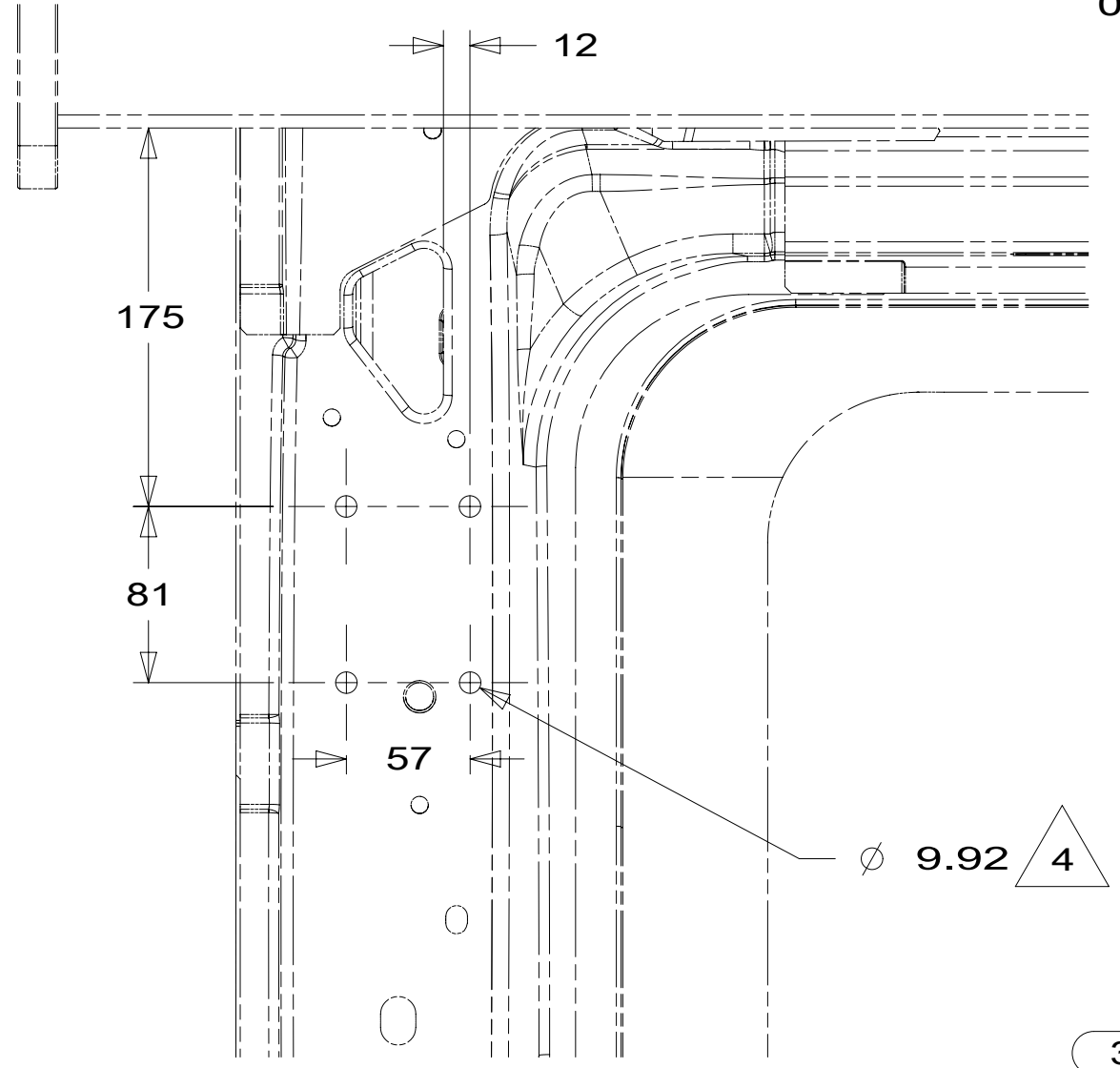
BRACKET-TV SWING MOUNT
179241-02-CHT
PAD-FELT 3/8
023320-01-000 (3)
(ADHERE TO RUBBER
BUMBERS ON BRACKET)
NUT-SERT
39715-01-000 (4)
BOLT
C26-04-12B (4)
WASHER
000E13-04-00U (6)
SEAL-FOAM TAPE
154585-07-CHT
(370 MM)



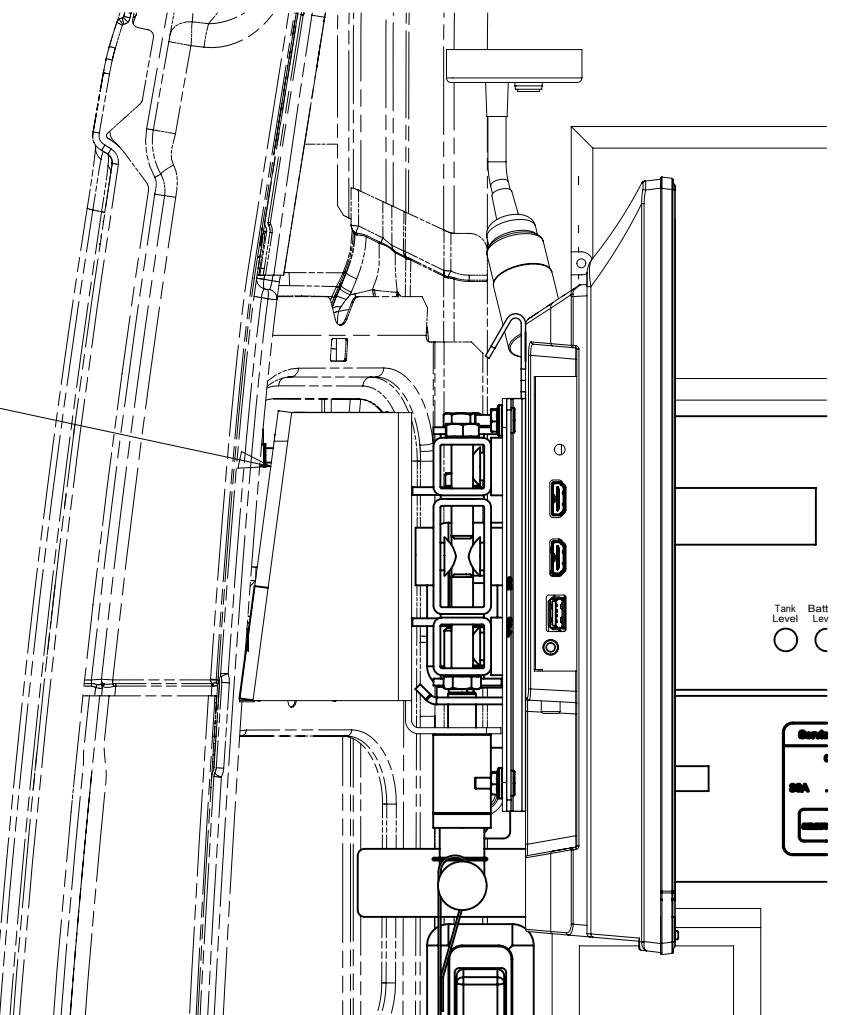
DETAIL DD 282



DETAIL DC



VIEW DB



VIEW DA

- 6 NOT USED WITH 35B
- 5 ADJUST ROOF RAILS AND KAYAK CARRIERS SO THAT THEY ARE NOT DIRECTLY OVER SOLAR PANEL.
- 4 LOCATE HOLES TO MATCH PANEL-REAR,RH.
- 3 MOUNTED ON INTERIOR SURFACE OF ROOF.
- 2 MOUNTED ON EXTERIOR SURFACE OF ROOF.

1. AT MINIMUM ALL WIRES TO BE SUPPORTED AND SECURED PER CODE REQUIREMENTS. USE CLAMP 10495 OR 10497 OR WIRE TIE 8343 OR 108046 AND SCREW G67-XX-XXX OR G56-XX-XXX AS APPROPRIATE FOR INSTALLATION.

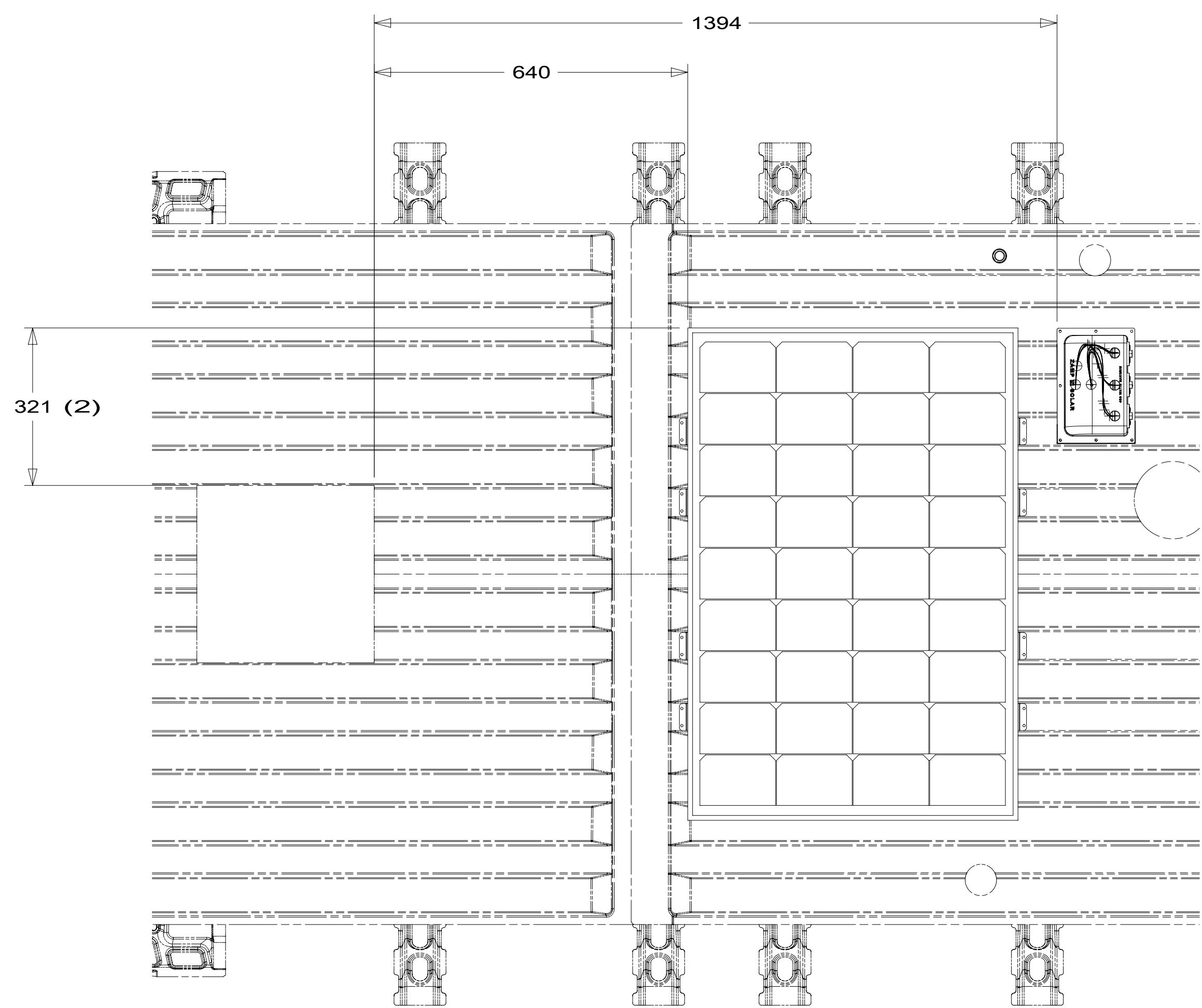
NOTES:

- 35B LUGGAGE RACK
- 282 SOLAR PANEL - 100 WATT
- 265 CODES/STANDARDS-CSA/CMVSS
- 1B1 CODES/STANDARDS USA

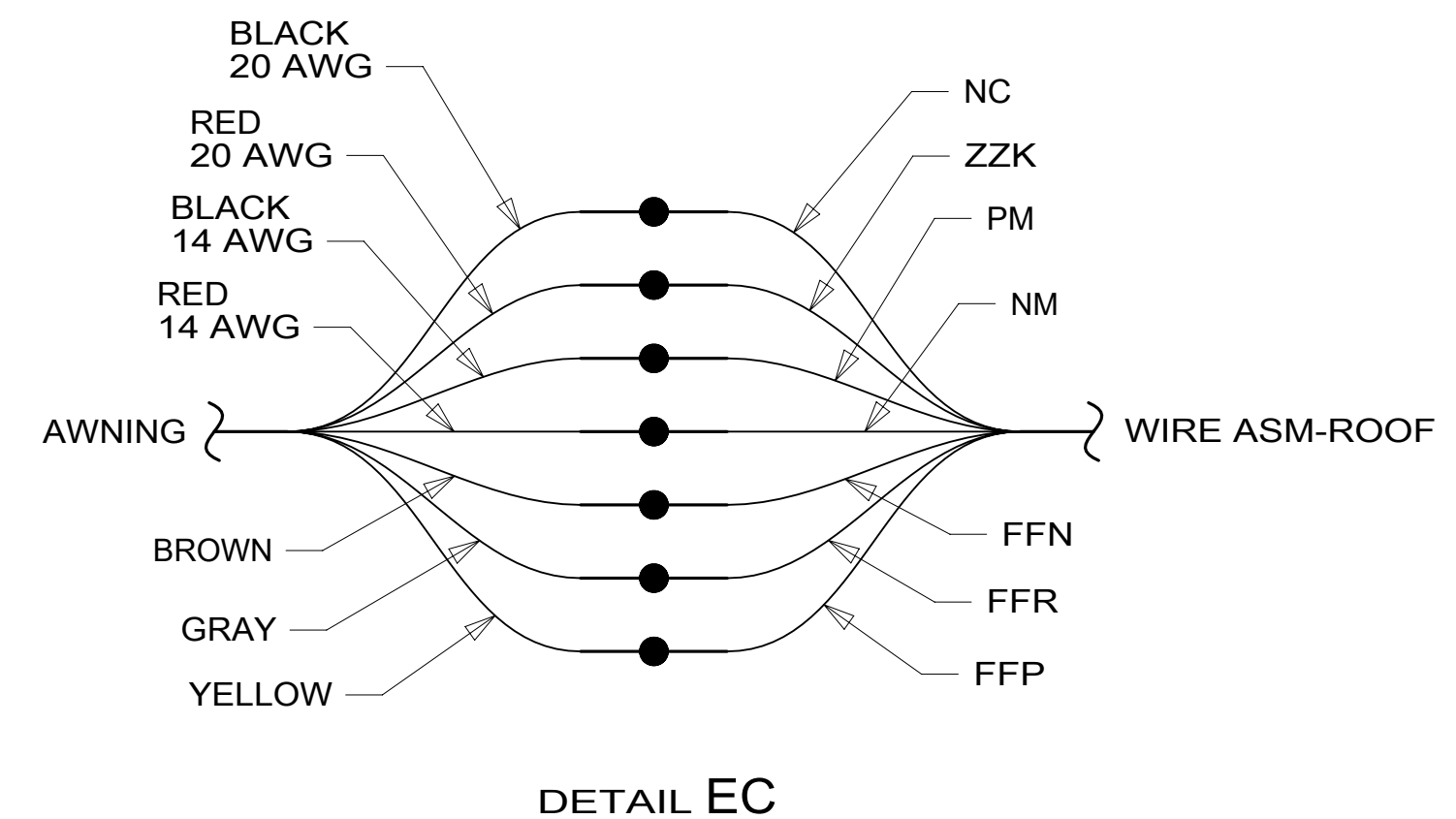
FOR ELECTRICAL
TORQUE
SPECIFICATIONS
SEE DWG NO.
128783-01-000

FOR ELECTRICAL
CALLOUTS
SEE DWG NO.
121339-01-000

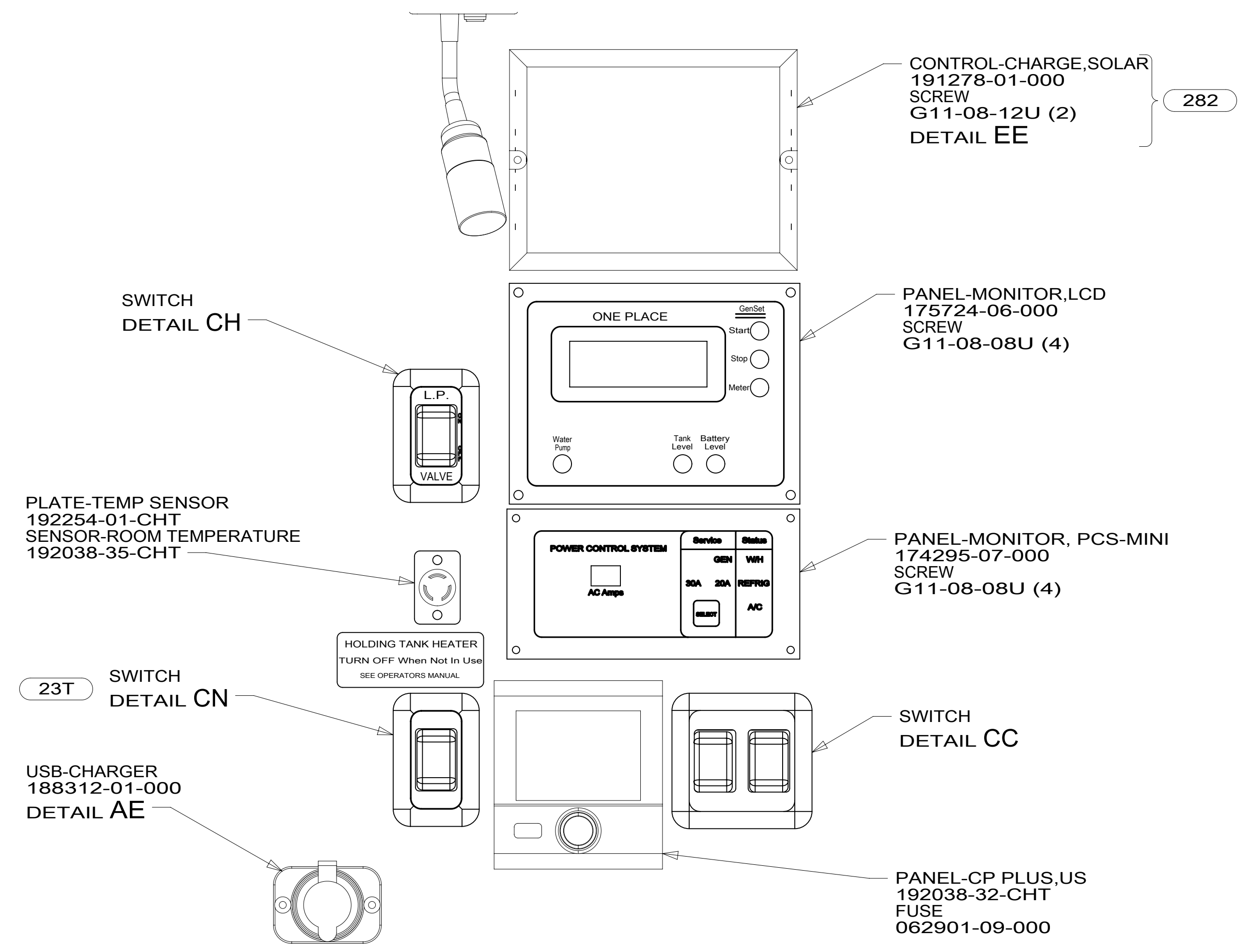
DESCRIPTION: WIRING INSTL-BODY, 12V		
SHEET: 4 OF 5	ITEM/PART NO: 000209337 / 30313801000	REV



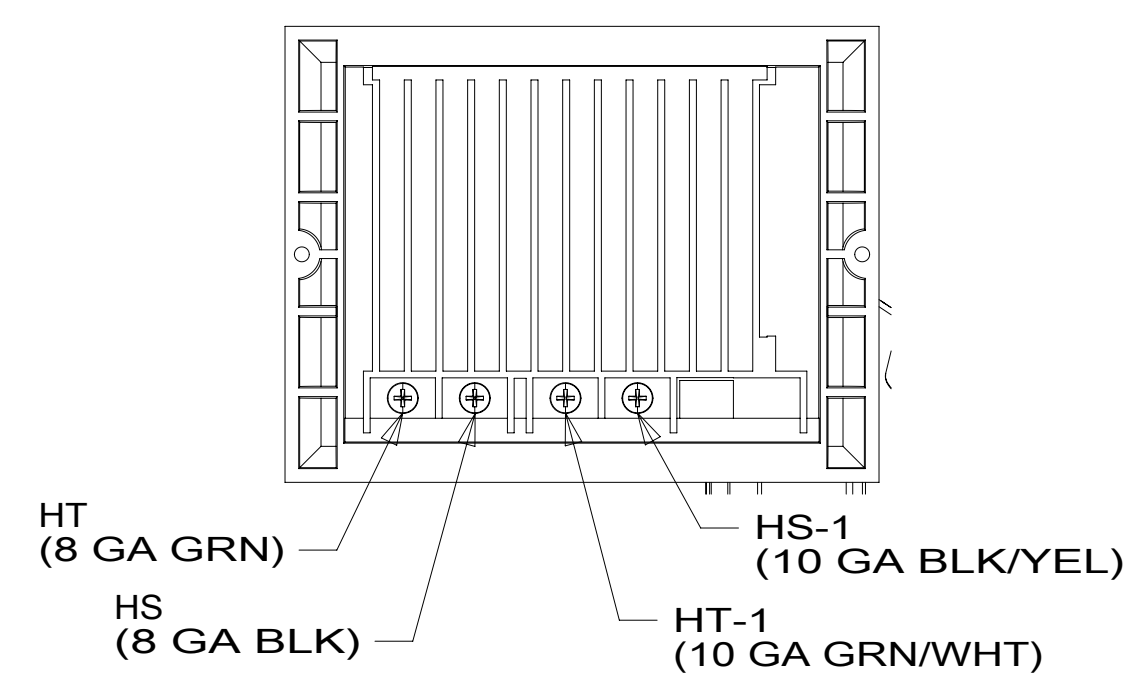
DETAIL EA 2



DETAIL EC



VIEW EC



DETAIL EE 282 3

- 3 SEE WIRE ASM-SOLAR SYSTEM AND WIRE INSTL-CHASSIS FOR ADDITIONAL INFORMATION.
- 2 ADJUST ROOF RAILS AND KAYAK CARRIER SO THAT THEY ARE NOT DIRECTLY OVER SOLAR PANEL.
1. AT MINIMUM ALL WIRES TO BE SUPPORTED AND SECURED PER CODE REQUIREMENTS. USE CLAMP 10495 OR 10497 OR WIRE TIE 8343 OR 108046 AND SCREW G67-XX-XXX OR G56-XX-XXX AS APPROPRIATE FOR INSTALLATION.

NOTES:

- 282 SOLAR PANEL - 100 WATT
- 23T DRAINAGE SYSTEM-HEATED
- 265 CODES/STANDARDS-CSA/CMVSS
- 1B1 CODES/STANDARDS USA

FOR ELECTRICAL TORQUE SPECIFICATIONS SEE DWG NO. 128783-01-000

FOR ELECTRICAL CALLOUTS SEE DWG NO. 121339-01-000

DESCRIPTION: WIRING INSTL-BODY, 12V		
SHEET: 5 OF 5	ITEM/PART NO: 000209337 / 30313801000	REV