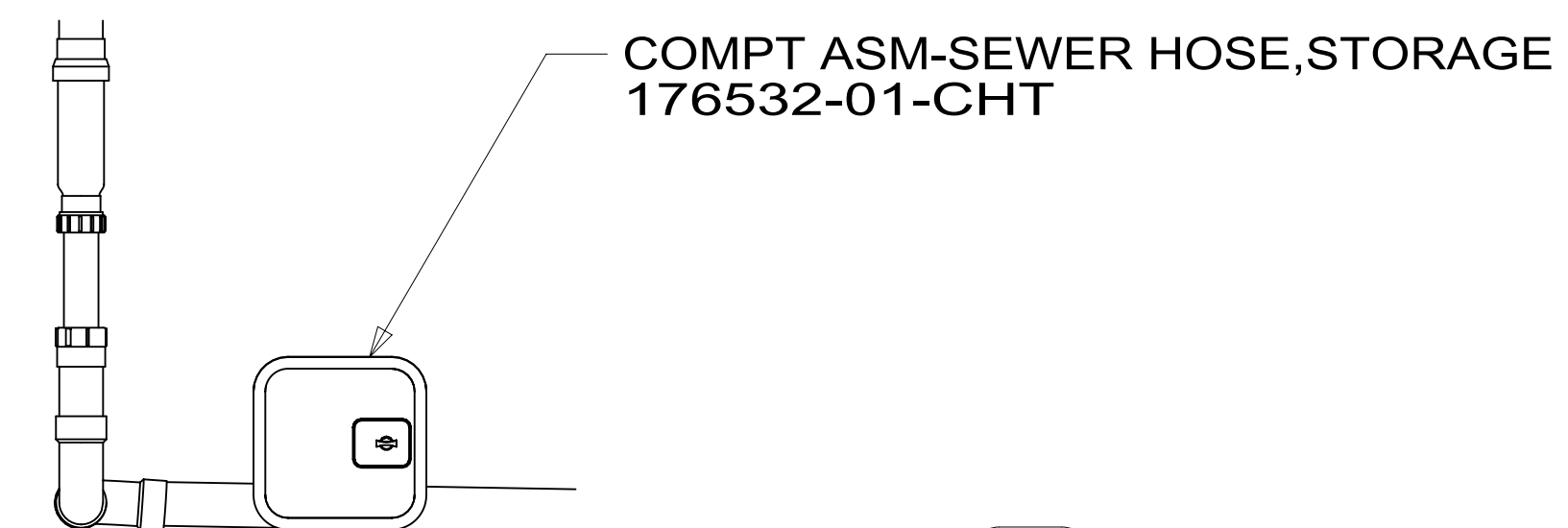


12. APPLY SEALANT TO THE BOTTOM OF SHOWER PAN IN A ZIG-ZAG PATTERN
11. ATTACH SEAL TO BRACE WHERE IT CONTACTS HEATER PAD.
10. PREP THE SURFACE PER MANUFACTURERS INSTRUCTIONS BEFORE APPLYING THE HEATING PAD.
9. SEE WIRING INSTL-BODY FOR ELECTRICAL CONNECTIONS.
8. NIPPLE TO BE TRIMMED TO LENGTH ON INSTALL.
7. SECURE VENT PIPE WITH CLAMP 000156237 / 326663-02-000.
6. VENT PIPE MUST PROJECT 51 MIN AND 64 MAX ABOVE ROOF FOR PROPER FIT AND FUNCTION.
5. SEAL AROUND SHOWER WITH SILICONE.
4. SECURE DRAINAGE PIPES TO CABINET USING WIRE TIE 108046-02-000, AND SCREW 000G67-10-12U AT INTERVALS OF NOT MORE THAN 4 FEET APART.
3. ALL PIPE AND FITTINGS TO BE ASSEMBLED WITH SOLVENT 004020-01-000 (USA), 004020-02-000 (CAN)
2. SLOPE OF TRAP ARM MUST BE 6 PER 305 mm.
1. SLOPE OF HORIZONTAL PIPING TO BE MINIMUM OF 3 PER 305 mm.

NOTES:



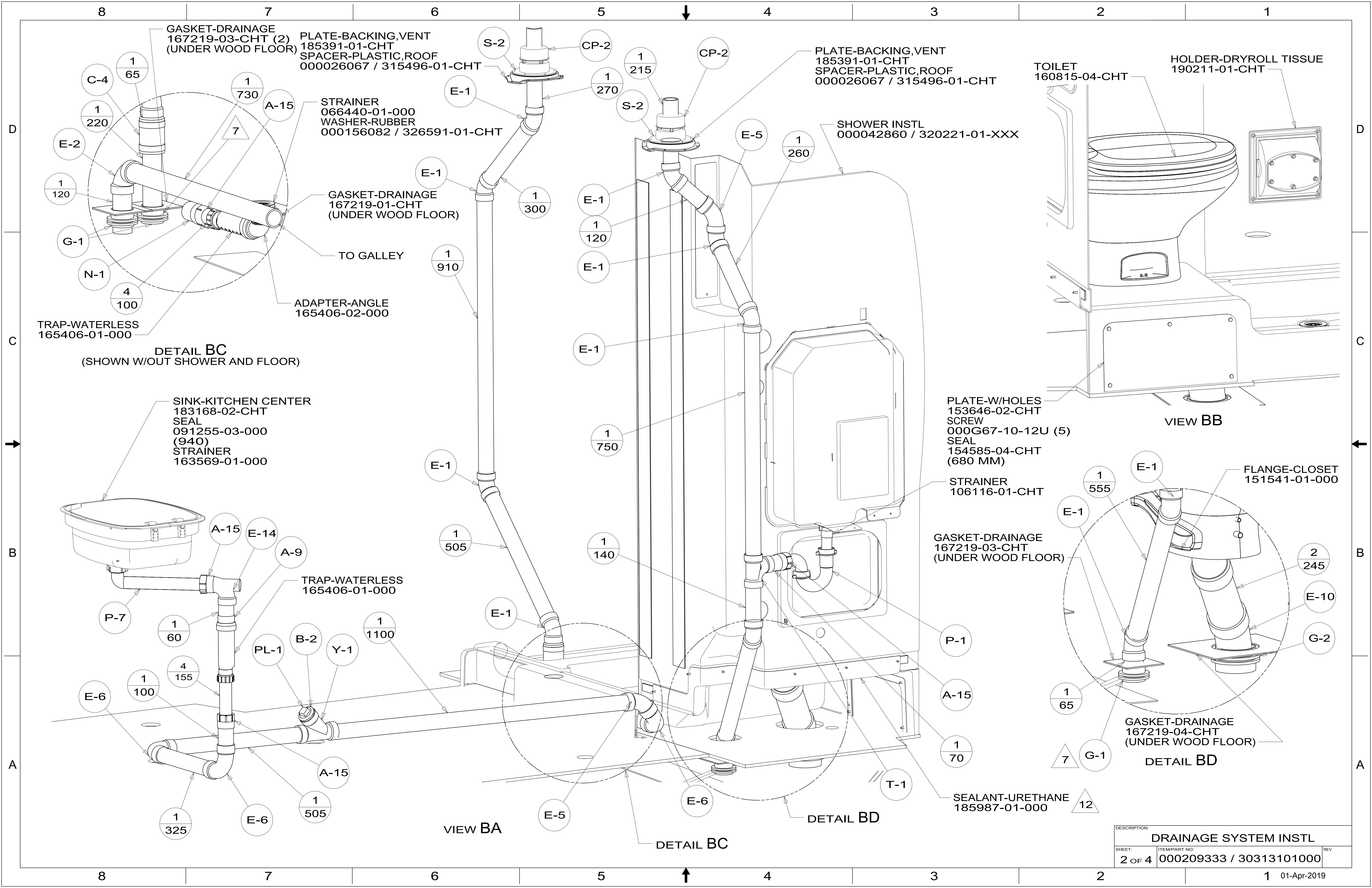
VIEW AA

FOR DRAINAGE CALLOUTS SEE DWG NO. 000211962 / 303370-01-000

23T DRAINAGE SYSTEM-HEATED



DSNR:		ALL DIMENSIONS ARE IN MILLIMETERS	
DIFTR:		MATERIAL:	
UNSPECIFIED TOLERANCES:			
WHOLE DIM (X)	3		
ONE-PLACE (X.X)	1.5		
TWO-PLACE (X.XX)	0.50		
ANGLE	1°		
REFER TO ES0018 FOR FASTENER TIGHTENING GUIDELINES		WEIGHT: (LBS)	FIRST USED: (REF)
			17 259K
DESCRIPTION:			
DRAINAGE SYSTEM INSTL			
SHEET:	ITEM/PART NO.:	REV	
1 OF 4	000209333 / 30313101000		



GASKET-DRAINAGE
167219-03-CHT (2)
(UNDER WOOD FLOOR)

PLATE-BACKING, VENT
185391-01-CHT
SPACER-PLASTIC, ROOF
000026067 / 315496-01-CHT

STRAINER
066440-01-000
WASHER-RUBBER
000156082 / 326591-01-CHT

GASKET-DRAINAGE
167219-01-CHT
(UNDER WOOD FLOOR)

TO GALLEY

ADAPTER-ANGLE
165406-02-000

TRAP-WATERLESS
165406-01-000

DETAIL BC
(SHOWN W/OUT SHOWER AND FLOOR)

SINK-KITCHEN CENTER
183168-02-CHT
SEAL
091255-03-000
(940)
STRAINER
163569-01-000

TRAP-WATERLESS
165406-01-000

PLATE-W/HOLES
153646-02-CHT
SCREW
000G67-10-12U (5)
SEAL
154585-04-CHT
(680 MM)

STRAINER
106116-01-CHT

GASKET-DRAINAGE
167219-03-CHT
(UNDER WOOD FLOOR)

SEALANT-URETHANE
185987-01-000

PLATE-BACKING, VENT
185391-01-CHT
SPACER-PLASTIC, ROOF
000026067 / 315496-01-CHT

SHOWER INSTL
000042860 / 320221-01-XXX

TOILET
160815-04-CHT

HOLDER-DRYROLL TISSUE
190211-01-CHT

VIEW BB

FLANGE-CLOSET
151541-01-000

GASKET-DRAINAGE
167219-04-CHT
(UNDER WOOD FLOOR)

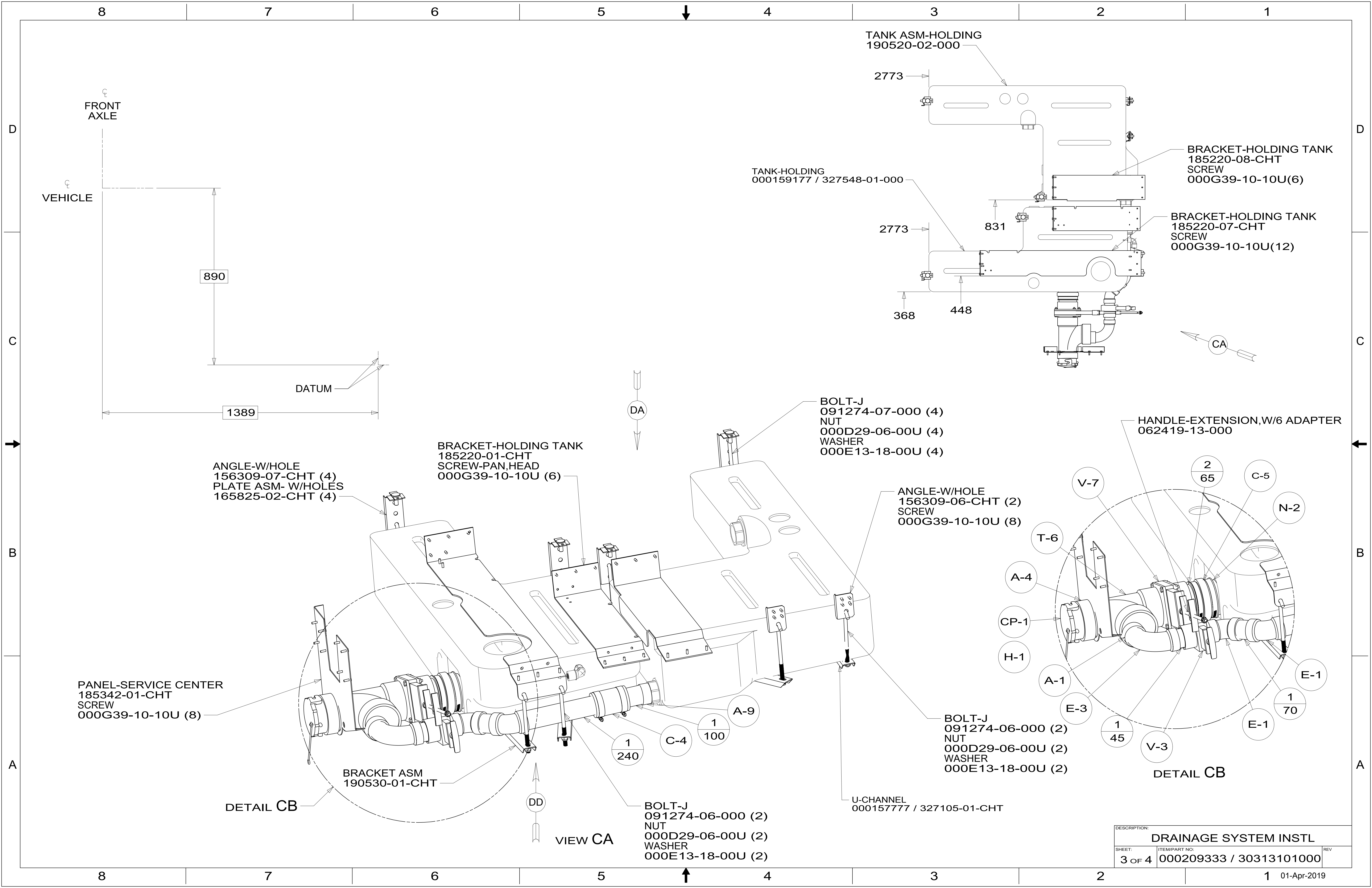
DETAIL BD

VIEW BA

DETAIL BC

DETAIL BD

DESCRIPTION: DRAINAGE SYSTEM INSTL		
SHEET: 2 OF 4	ITEM/PART NO: 000209333 / 30313101000	REV



FRONT AXLE

VEHICLE

890

1389

DATUM

DA

BRACKET-HOLDING TANK
185220-01-CHT
SCREW-PAN,HEAD
000G39-10-10U (6)

ANGLE-W/HOLE
156309-07-CHT (4)
PLATE ASM- W/HOLES
165825-02-CHT (4)

PANEL-SERVICE CENTER
185342-01-CHT
SCREW
000G39-10-10U (8)

BRACKET ASM
190530-01-CHT

DETAIL CB

VIEW CA

BOLT-J
091274-06-000 (2)
NUT
000D29-06-00U (2)
WASHER
000E13-18-00U (2)

BOLT-J
091274-07-000 (4)
NUT
000D29-06-00U (4)
WASHER
000E13-18-00U (4)

ANGLE-W/HOLE
156309-06-CHT (2)
SCREW
000G39-10-10U (8)

BOLT-J
091274-06-000 (2)
NUT
000D29-06-00U (2)
WASHER
000E13-18-00U (2)

U-CHANNEL
000157777 / 327105-01-CHT

TANK ASM-HOLDING
190520-02-000

TANK-HOLDING
000159177 / 327548-01-000

BRACKET-HOLDING TANK
185220-08-CHT
SCREW
000G39-10-10U(6)

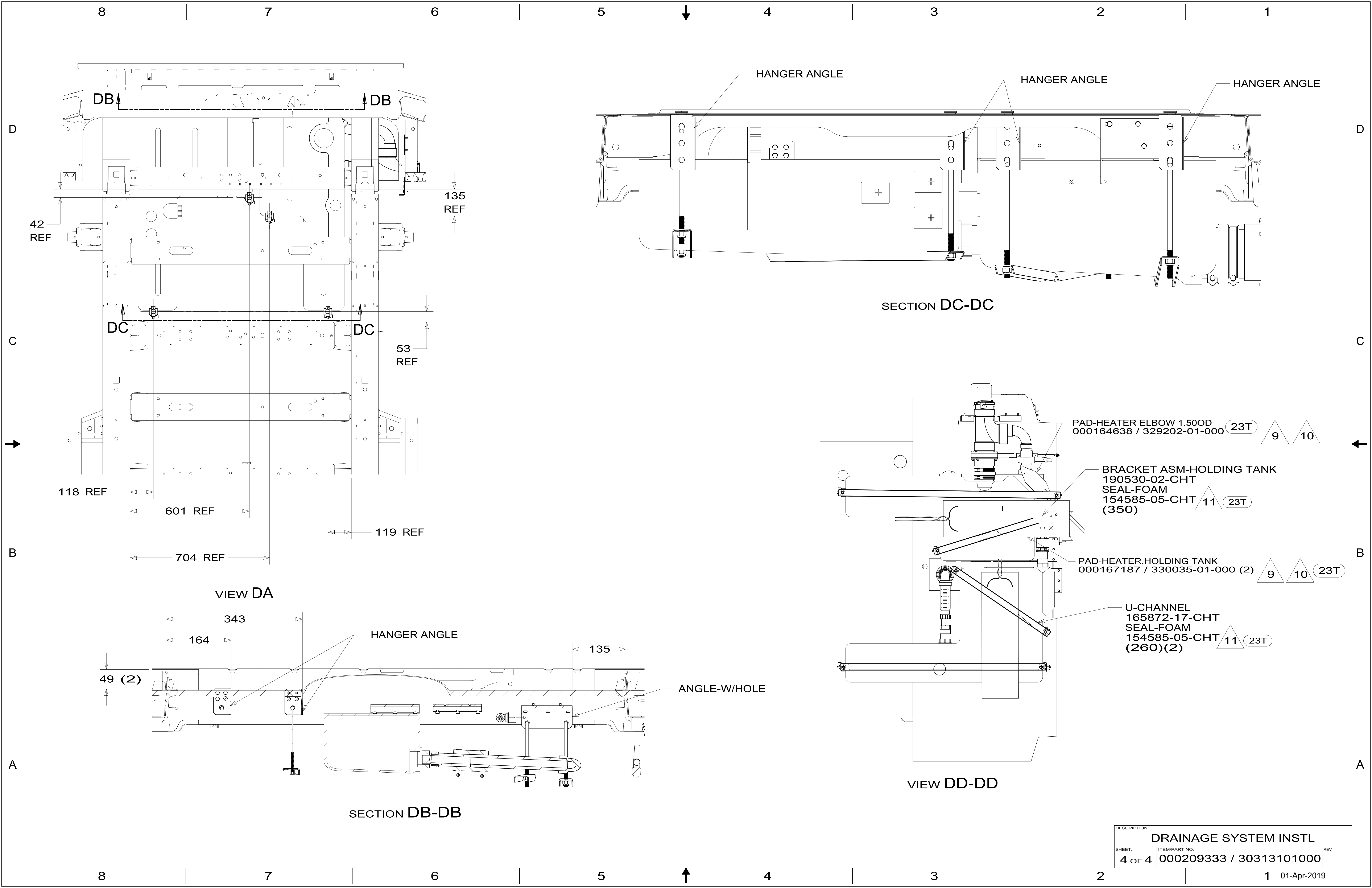
BRACKET-HOLDING TANK
185220-07-CHT
SCREW
000G39-10-10U(12)

HANDLE-EXTENSION, W/6 ADAPTER
062419-13-000

DETAIL CB

DESCRIPTION:		
DRAINAGE SYSTEM INSTL		
SHEET:	ITEM/PART NO.:	REV
3 OF 4	000209333 / 30313101000	

1 01-Apr-2019



DESCRIPTION:		
DRAINAGE SYSTEM INSTL		
SHEET:	ITEM/PART NO.:	REV
4 OF 4	000209333 / 30313101000	