

ANTENNA-SATELLITE RADIO
(SUPPLIED WITH SXM RECEIVER)
PLATE-SATELLITE RADIO
177256-04-CHT
SCREW
G11-08-08U (4)
SEAL

70D
643 5

WIRE ASM-MONITOR, 15'
(REF) 283

1 3 CABLE-MONITOR

6 70D
643 CABLE-ANTENNA, SATELLITE
(SUPPLIED WITH ANTENNA)

283 WIRE ASM-MONITOR
(REF)

4 ANTENNA-RADIO

HOLE IN FLOOR

6 ROUTE CABLE FROM RADIO TO PASSENGER'S STEPWELL AREA, UP WINGWALL, THROUGH SLEEPER BOARD ASM, UNDER TRIM TO ANTENNA PLATE ON ROOF.

5 MOUNT ANTENNA AND PLATE SUCH THAT BASE IS SQUARE WITH ROOF AND DIRECTLY OVER HOLE IN ROOF. SEAL BOTH HOLE IN ROOF AND ANTENNA BASE AT SCREWS.

4 SUPPLIED WITH CHASSIS. USE SHORTEST SUPPLIED ANTENNA.

3 ROUTE CABLE TO DASH RADIO.

2 WIRING IS ROUTED DIFFERENTLY FOR EACH UNIT FROM THIS POINT REARWARD.

1 REAR MONITOR CAMERA CABLE IS PART OF WIRE ASM-CHASSIS AND RUNS ALONG LEFT FRAME RAIL.

NOTES:

- 643 RENTAL-MILES DIXON
- 70D RADIO - SATELLITE SIRIUSXM
- 283 MIRRORS-UPGRADE W/CAMERA
- 265 CODES/STANDARDS-CSA/CMVSS
- 1B1 CODES/STANDARDS USA

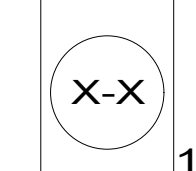
1B1 265



DSNR:		ALL DIMENSIONS ARE IN MILLIMETERS	
DFFR:		MATERIAL:	
UNSPECIFIED TOLERANCES:			
WHOLE DIM (X)	: 3		
ONE-PLACE (X.X)	: 1.5		
TWO-PLACE (X.XX)	: 0.50		
ANGLE	: 1°		
REFER TO ES0018 FOR FASTENER TIGHTENING GUIDELINES	WEIGHT: (LBS)	FIRST USED:	
			16 331G

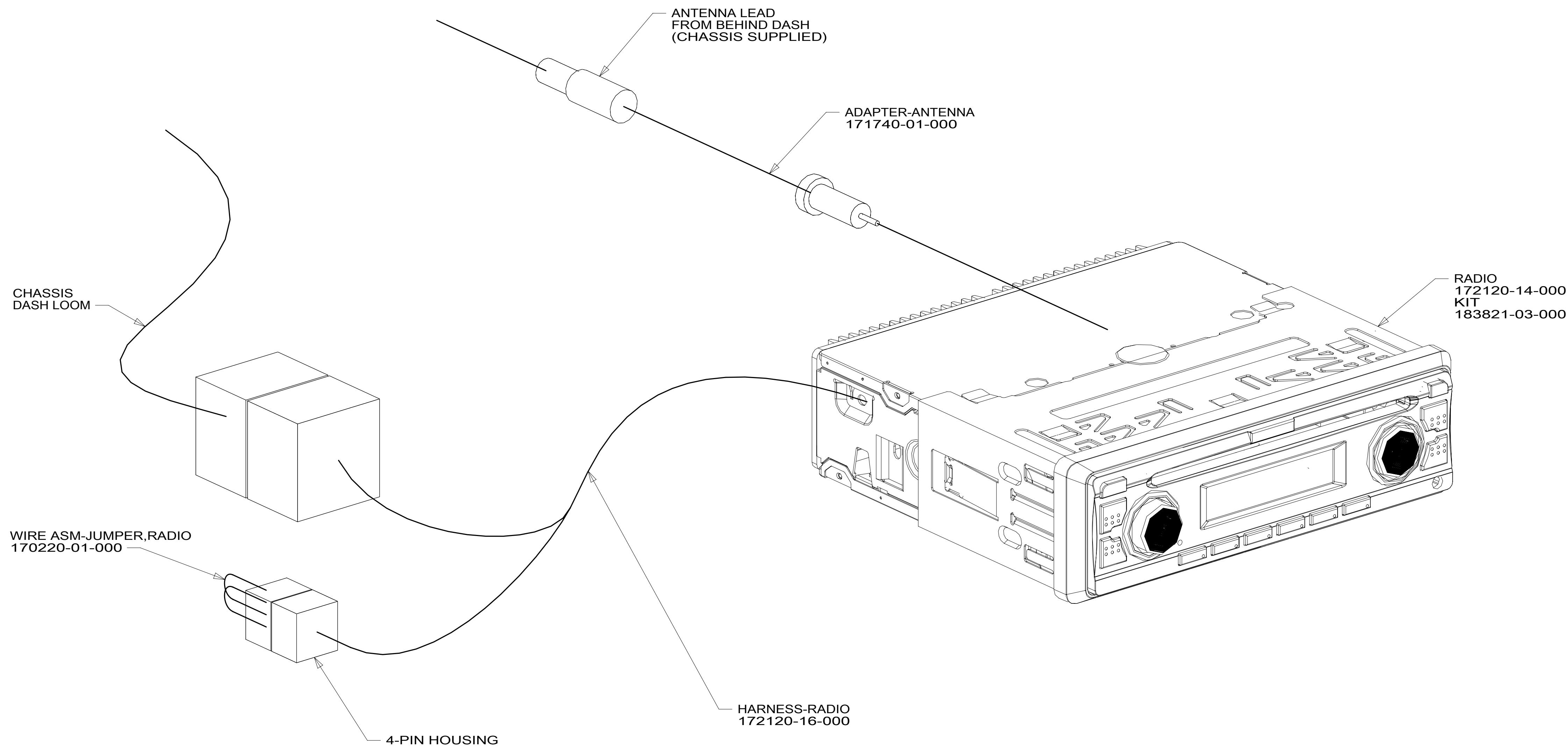
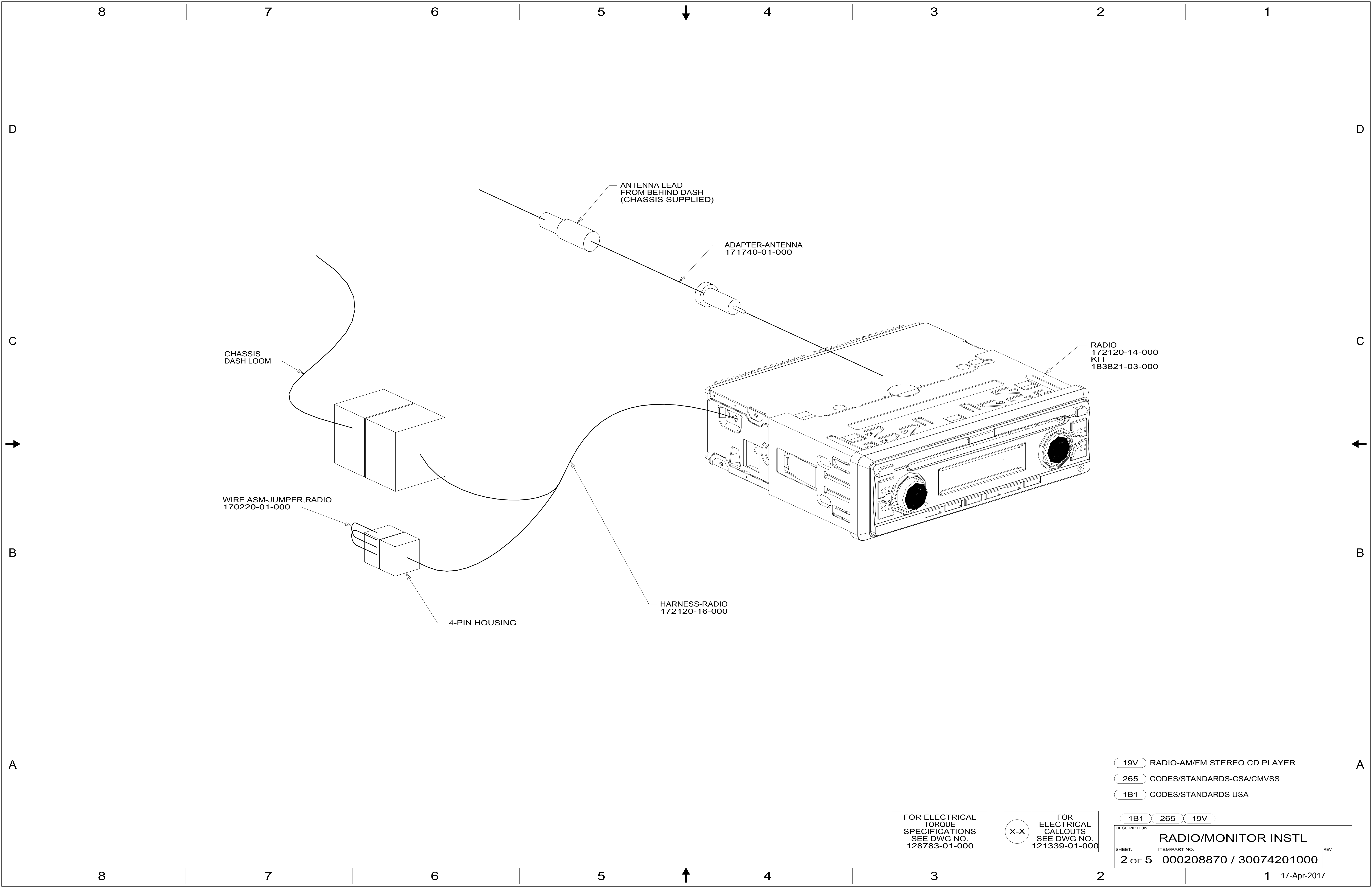
FOR ELECTRICAL TORQUE SPECIFICATIONS SEE DWG NO. 128783-01-000

FOR ELECTRICAL CALLOUTS SEE DWG NO. 121339-01-000



RADIO/MONITOR INSTL

SHEET: 1 OF 5 ITEM/PART NO: 000208870 / 30074201000 REF: 1 17-Apr-2017

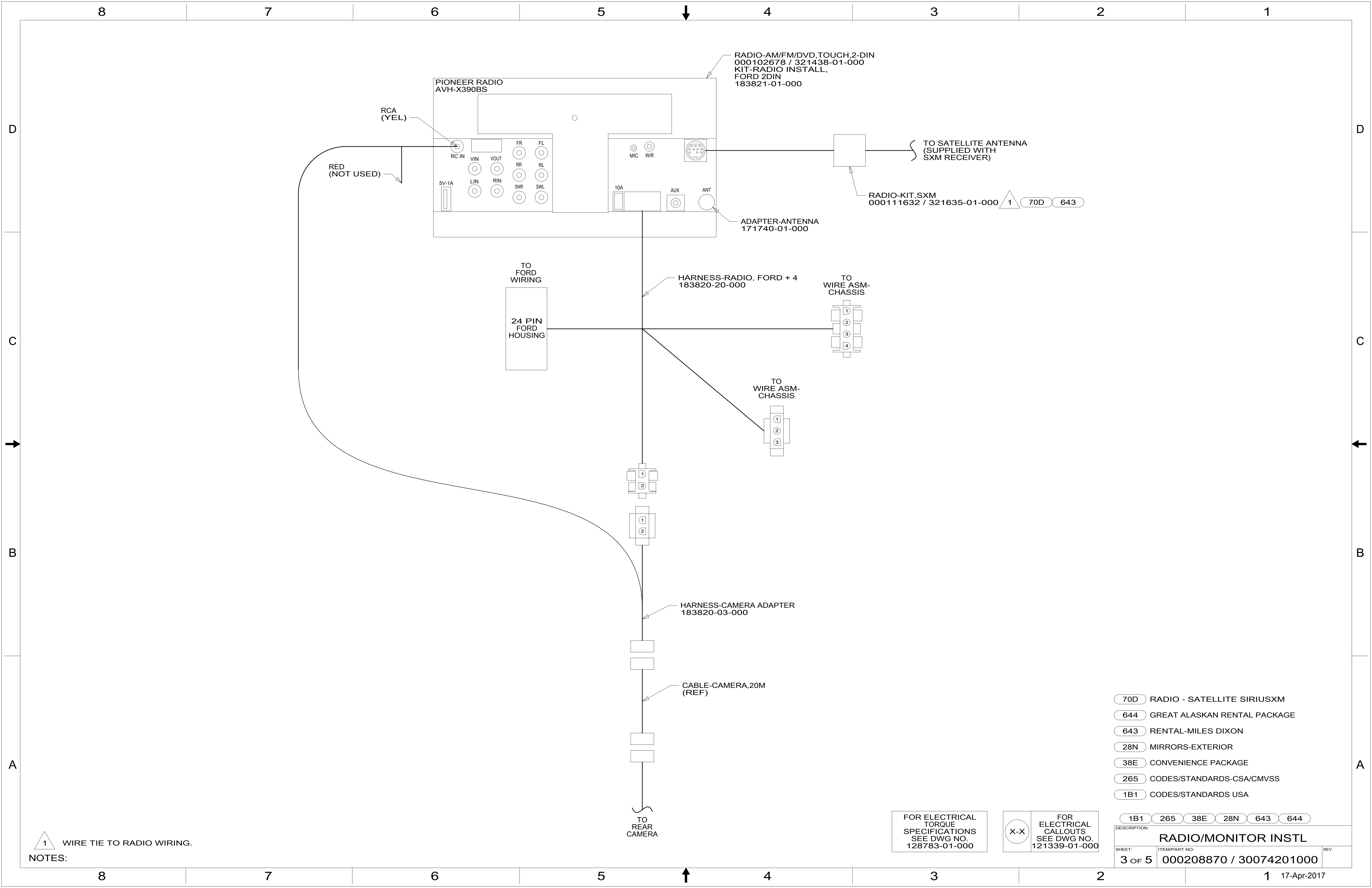


- 19V RADIO-AM/FM STEREO CD PLAYER
- 265 CODES/STANDARDS-CSA/CMVSS
- 1B1 CODES/STANDARDS USA

FOR ELECTRICAL TORQUE SPECIFICATIONS SEE DWG NO. 128783-01-000

FOR ELECTRICAL CALLOUTS SEE DWG NO. 121339-01-000

DESCRIPTION:	1B1 265 19V	
RADIO/MONITOR INSTL		
SHEET:	ITEM/PART NO:	REV
2 OF 5	000208870 / 30074201000	



NOTES:
 1 WIRE TIE TO RADIO WIRING.

- 70D RADIO - SATELLITE SIRIUSXM
- 644 GREAT ALASKAN RENTAL PACKAGE
- 643 RENTAL-MILES DIXON
- 28N MIRRORS-EXTERIOR
- 38E CONVENIENCE PACKAGE
- 265 CODES/STANDARDS-CSA/CMVSS
- 1B1 CODES/STANDARDS USA

FOR ELECTRICAL TORQUE SPECIFICATIONS SEE DWG NO. 128783-01-000

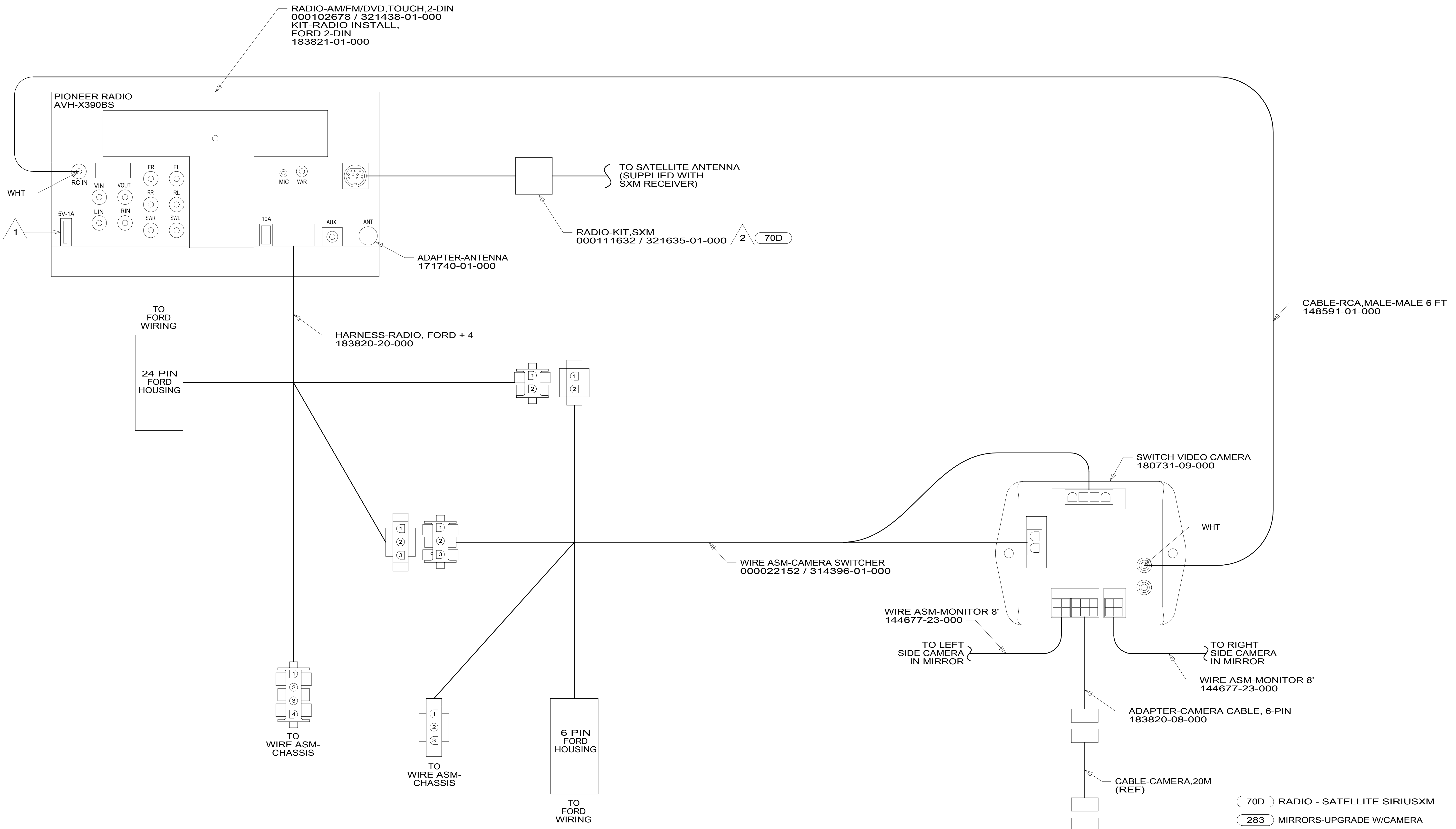
FOR ELECTRICAL CALLOUTS SEE DWG NO. 121339-01-000

1B1 265 38E 28N 643 644

DESCRIPTION: RADIO/MONITOR INSTL

SHEET: 3 OF 5 ITEM/PART NO.: 000208870 / 30074201000 REV:

8 7 6 5 4 3 2 1



NOTES:

2 WIRE TIE TO RADIO WIRING.

1 PLUG USB CABLE SUPPLIED WITH RADIO INTO LEAD ON BACK OF RADIO MARKED 'USB'. ROUTE CABLE TO THE LEFT OF RADIO. WIRE TIE EXCESS CABLE UNDER DASH IN THE AREA LEFT OF THE RADIO. LEAVE 200 MM OF CABLE IN THE MOTOR COVER BEVERAGE TRAY. MAKE SURE CABLE DOES NOT GET PINCHED BY MOTOR COVER.

FOR ELECTRICAL TORQUE SPECIFICATIONS SEE DWG NO. 128783-01-000

FOR ELECTRICAL CALLOUTS SEE DWG NO. 121339-01-000

- 70D RADIO - SATELLITE SIRIUSXM
- 283 MIRRORS-UPGRADE W/CAMERA
- 38E CONVENIENCE PACKAGE
- 265 CODES/STANDARDS-CSA/CMVSS
- 1B1 CODES/STANDARDS USA

DESCRIPTION:	1B1 265 38E 283		
RADIO/MONITOR INSTL			
SHEET:	ITEM/PART NO.:	REV:	
4 OF 5	000208870 / 30074201000		

8 7 6 5 4 3 2 1 17-Apr-2017

8 7 6 5 4 3 2 1

D

D

C

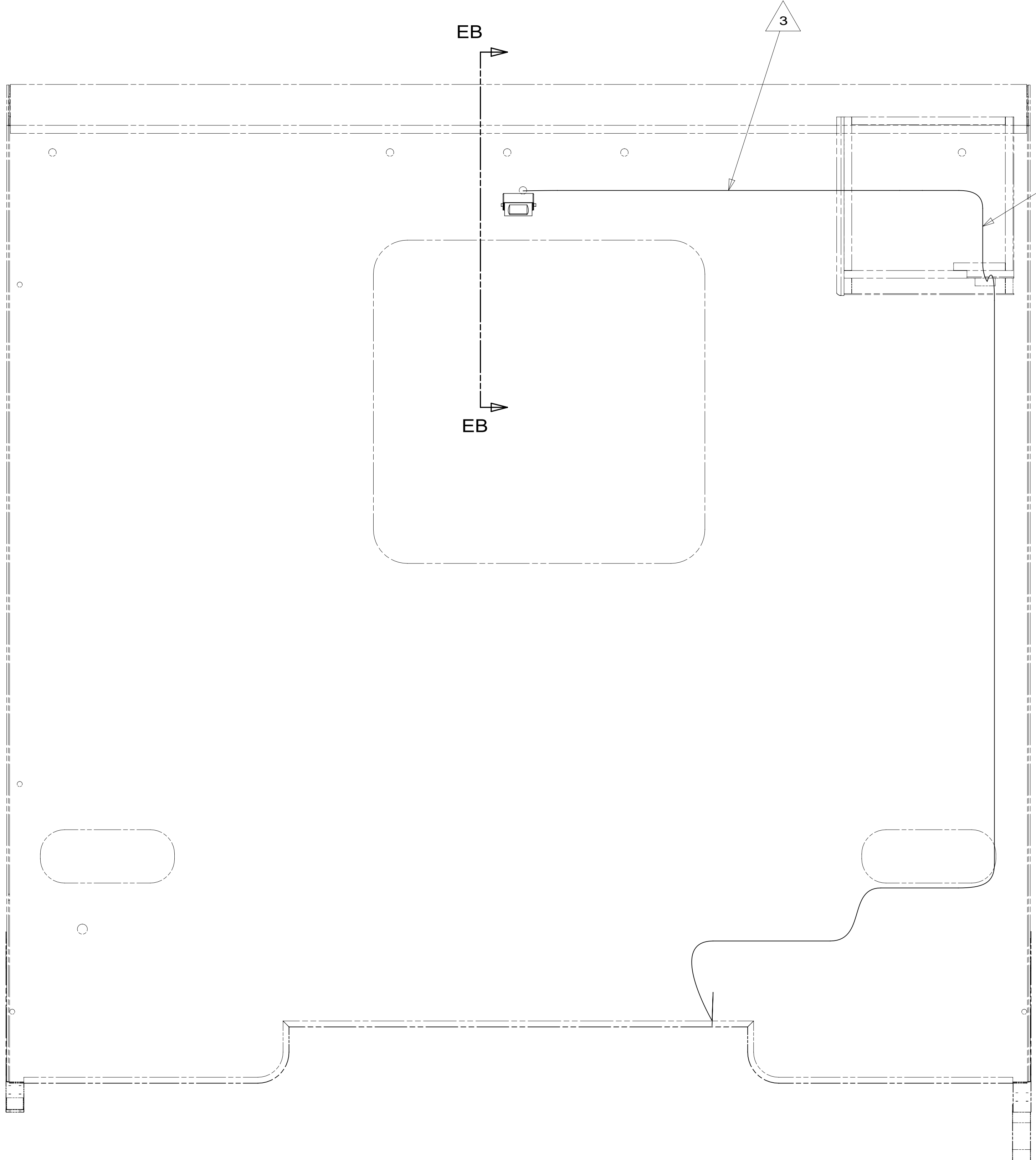
C

B

B

A

A



CABLE-MONITOR/
CAMERA (REF) 2

CAMERA-REAR VIEW
183822-01-000
SCREW
G39-10-12U (EXT) (5) 4

SECTION EB-EB 38E

VIEW EA

- NOTES:
- 4 ADJUST CAMERA AFTER MOUNTING SO BACKWALL IS JUST VISIBLE ON BOTTOM OF THE SCREEN.
 - 3 CABLE TO BE PULLED THROUGH ROUTED PATH FROM CORNER TO CAMERA. ONCE CONNECTED TO CAMERA, PULL CABLE BACK THROUGH ROUTED PATH ENOUGH TO ALLOW CABLE TO FIT INTO SLOT.
 - 2 REAR MONITOR CABLE IS PART OF THE WIRE ASM-CHASSIS.
 - 1 CABLE ROUTED THRU BACKWALL.

- 38E CONVENIENCE PACKAGE
- 265 CODES/STANDARDS-CSA/CMVSS
- 1B1 CODES/STANDARDS USA

FOR ELECTRICAL
TORQUE
SPECIFICATIONS
SEE DWG NO.
128783-01-000

FOR
ELECTRICAL
CALLOUTS
SEE DWG NO.
121339-01-000

DESCRIPTION:		1B1 265	
RADIO/MONITOR INSTL			
SHEET:	ITEM/PART NO.:	REV	
5 OF 5	000208870 / 30074201000		

8 7 6 5 4 3 2 1 17-Apr-2017