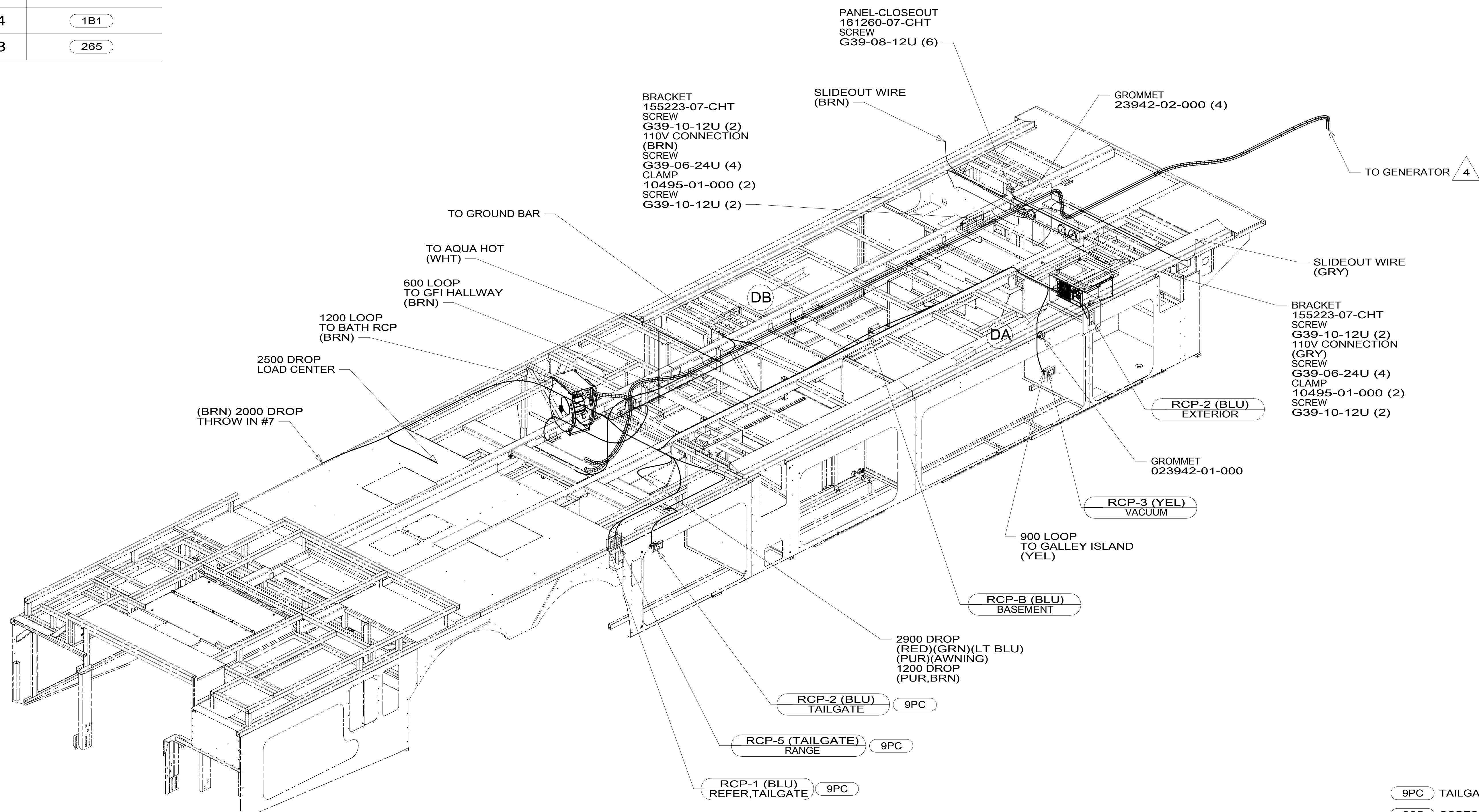


DRAWING NO.	FEATURE
300160-01	-----
300160-14	1B1
300160-18	265



- 4 SEE GENERATOR INSTL FOR ADDITIONAL INFORMATION.
- WIRES THAT REST ON WIRE TRAYS ARE TO BE TIED DOWN WITH WIRE TIE 8343-04-000.
 - CLAMP TO FLOOR SUPPORT TUBES AS NECESSARY WITH CLAMP 10497-01-000.
 - AT MINIMUM ALL WIRES TO BE SUPPORTED AND SECURED PER CODE REQUIREMENTS. USE CLAMP 10495 OR 10497 OR WIRE TIE 8343 OR 108046 AND SCREW G67-XX-XXX OR G56-XX-XXX AS APPROPRIATE FOR INSTALLATION.

- 9PC TAILGATE PACKAGE
- 265 CODES/STANDARDS-CSA/CMVSS
- 1B1 CODES/STANDARDS USA

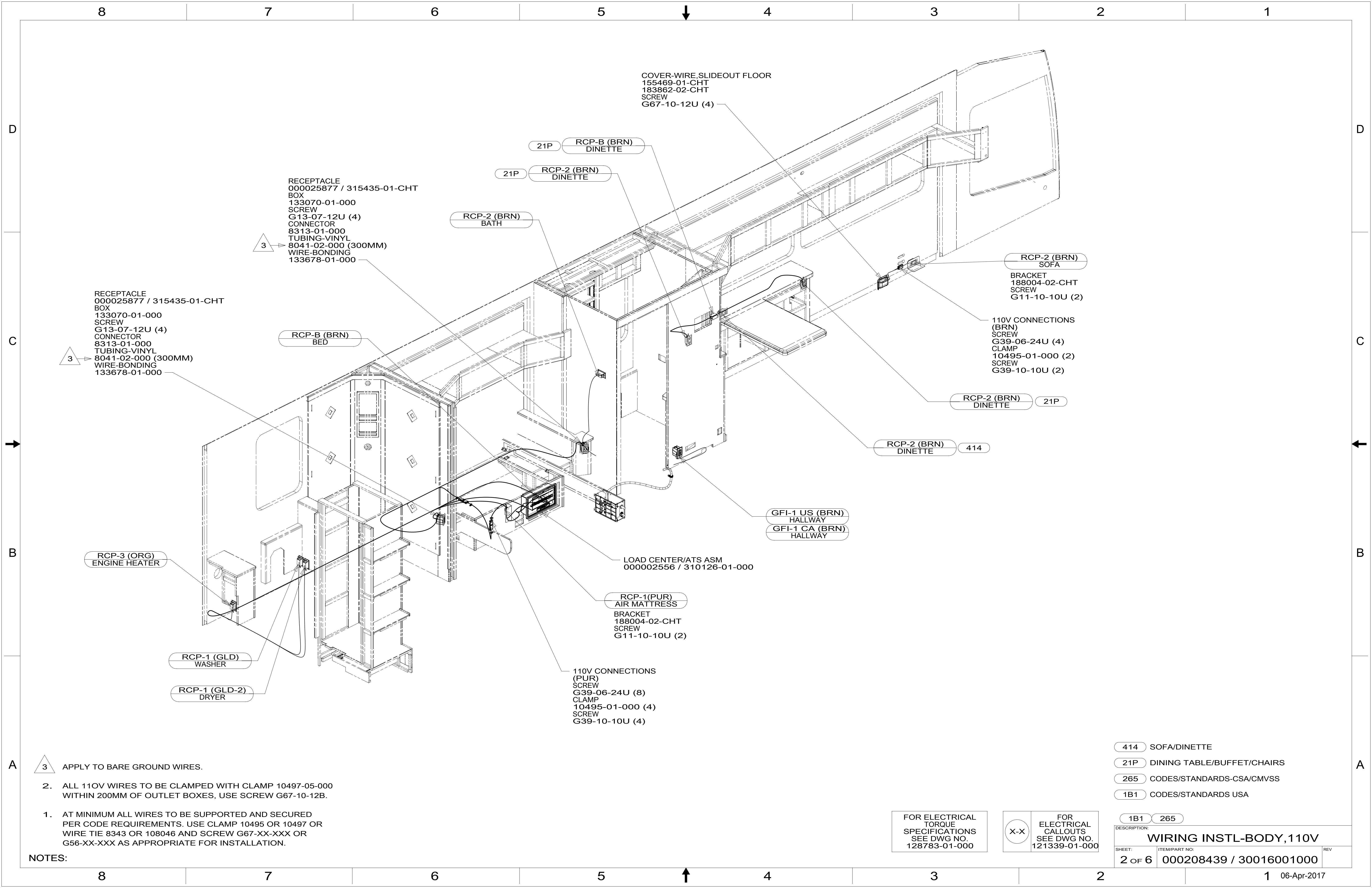
1B1 265

WINNEBAGO
COPYRIGHT 2016 WINNEBAGO INDUSTRIES, INC.

DSNR:		ALL DIMENSIONS ARE IN MILLIMETERS	
DIFFR:		MATERIAL:	
UNSPECIFIED TOLERANCES:			
WHOLE DIM (X)	: 3		
ONE-PLACE (X.X)	: 1.5		
TWO-PLACE (X.XX)	: 0.50		
ANGLE	: 1°		
REFER TO ES0018 FOR FASTENER TIGHTENING GUIDELINES		WEIGHT: (LBS)	FIRST USED:
			16 R45RL
DESCRIPTION: WIRING INSTL-BODY, 110V			
SHEET:	ITEM/PART NO:	REV	
1 OF 6	000208439 / 30016001000		
REF:		1 06-Apr-2017	

FOR ELECTRICAL TORQUE SPECIFICATIONS SEE DWG NO. 128783-01-000

X-X FOR ELECTRICAL CALLOUTS SEE DWG NO. 121339-01-000



COVER-WIRE, SLIDEOUT FLOOR
 155469-01-CHT
 183862-02-CHT
 SCREW
 G67-10-12U (4)

21P RCP-B (BRN)
 DINETTE

21P RCP-2 (BRN)
 DINETTE

RCP-2 (BRN)
 BATH

RECEPTACLE
 000025877 / 315435-01-CHT
 BOX
 133070-01-000
 SCREW
 G13-07-12U (4)
 CONNECTOR
 8313-01-000
 TUBING-VINYL
 8041-02-000 (300MM)
 WIRE-BONDING
 133678-01-000

RCP-2 (BRN)
 SOFA
 BRACKET
 188004-02-CHT
 SCREW
 G11-10-10U (2)

110V CONNECTIONS
 (BRN)
 SCREW
 G39-06-24U (4)
 CLAMP
 10495-01-000 (2)
 SCREW
 G39-10-10U (2)

RCP-2 (BRN)
 DINETTE 21P

RCP-2 (BRN)
 DINETTE 414

GFI-1 US (BRN)
 HALLWAY
 GFI-1 CA (BRN)
 HALLWAY

LOAD CENTER/ATS ASM
 000002556 / 310126-01-000

RCP-1(PUR)
 AIR MATTRESS
 BRACKET
 188004-02-CHT
 SCREW
 G11-10-10U (2)

110V CONNECTIONS
 (PUR)
 SCREW
 G39-06-24U (8)
 CLAMP
 10495-01-000 (4)
 SCREW
 G39-10-10U (4)

RCP-B (BRN)
 BED

RCP-3 (ORG)
 ENGINE HEATER

RCP-1 (GLD)
 WASHER

RCP-1 (GLD-2)
 DRYER

RECEPTACLE
 000025877 / 315435-01-CHT
 BOX
 133070-01-000
 SCREW
 G13-07-12U (4)
 CONNECTOR
 8313-01-000
 TUBING-VINYL
 8041-02-000 (300MM)
 WIRE-BONDING
 133678-01-000

3 APPLY TO BARE GROUND WIRES.

2. ALL 110V WIRES TO BE CLAMPED WITH CLAMP 10497-05-000 WITHIN 200MM OF OUTLET BOXES, USE SCREW G67-10-12B.

1. AT MINIMUM ALL WIRES TO BE SUPPORTED AND SECURED PER CODE REQUIREMENTS. USE CLAMP 10495 OR 10497 OR WIRE TIE 8343 OR 108046 AND SCREW G67-XX-XXX OR G56-XX-XXX AS APPROPRIATE FOR INSTALLATION.

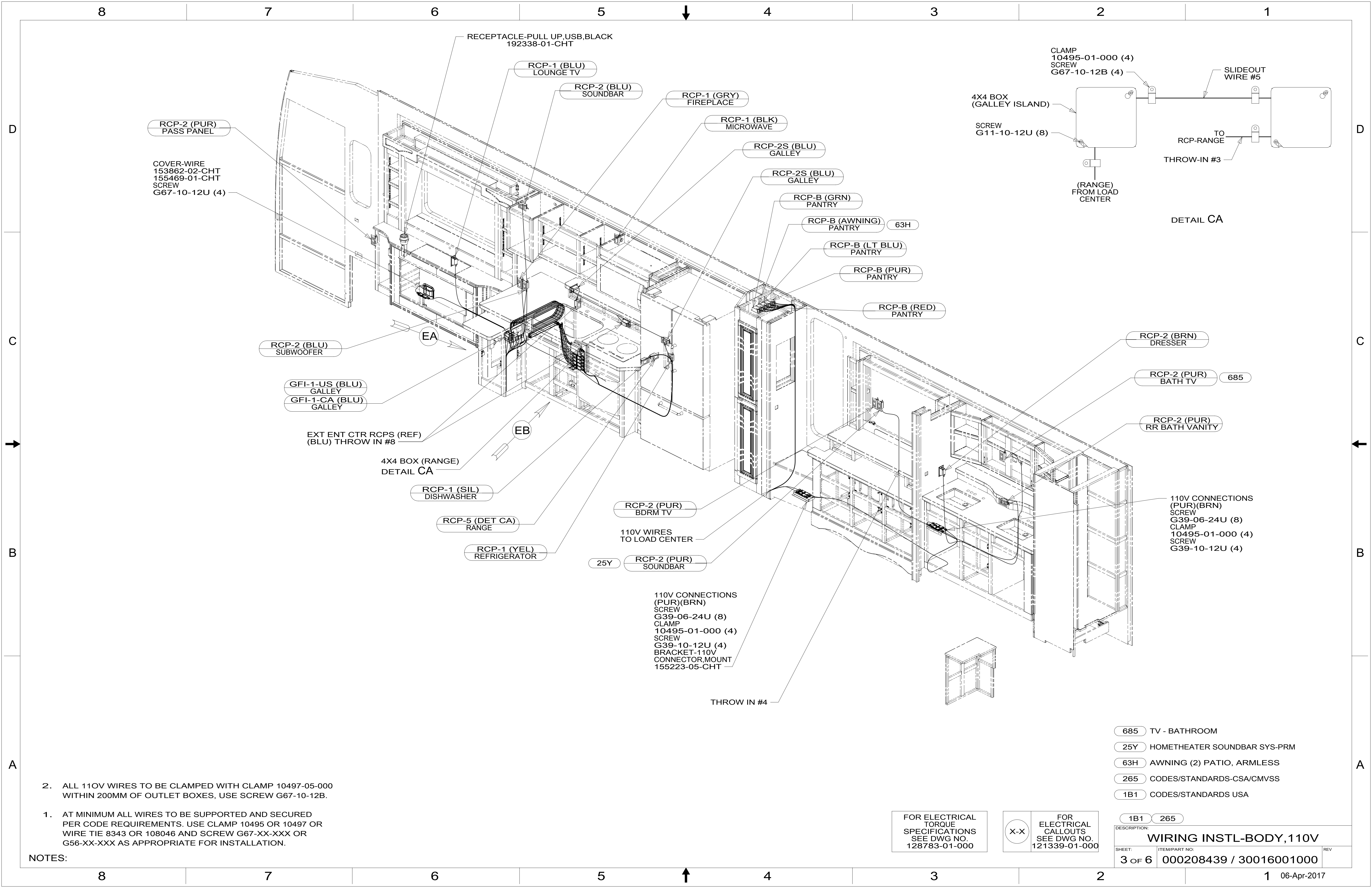
NOTES:

- 414 SOFA/DINETTE
- 21P DINING TABLE/BUFFET/CHAIRS
- 265 CODES/STANDARDS-CSA/CMVSS
- 1B1 CODES/STANDARDS USA

FOR ELECTRICAL TORQUE SPECIFICATIONS SEE DWG NO. 128783-01-000

FOR ELECTRICAL CALLOUTS SEE DWG NO. 121339-01-000

DESCRIPTION:		1B1 265	
WIRING INSTL-BODY, 110V			
SHEET:	ITEM/PART NO.:	REV:	
2 OF 6	000208439 / 30016001000		



D

C

B

A

D

C

B

A

- NOTES:
1. AT MINIMUM ALL WIRES TO BE SUPPORTED AND SECURED PER CODE REQUIREMENTS. USE CLAMP 10495 OR 10497 OR WIRE TIE 8343 OR 108046 AND SCREW G67-XX-XXX OR G56-XX-XXX AS APPROPRIATE FOR INSTALLATION.
 2. ALL 110V WIRES TO BE CLAMPED WITH CLAMP 10497-05-000 WITHIN 200MM OF OUTLET BOXES, USE SCREW G67-10-12B.

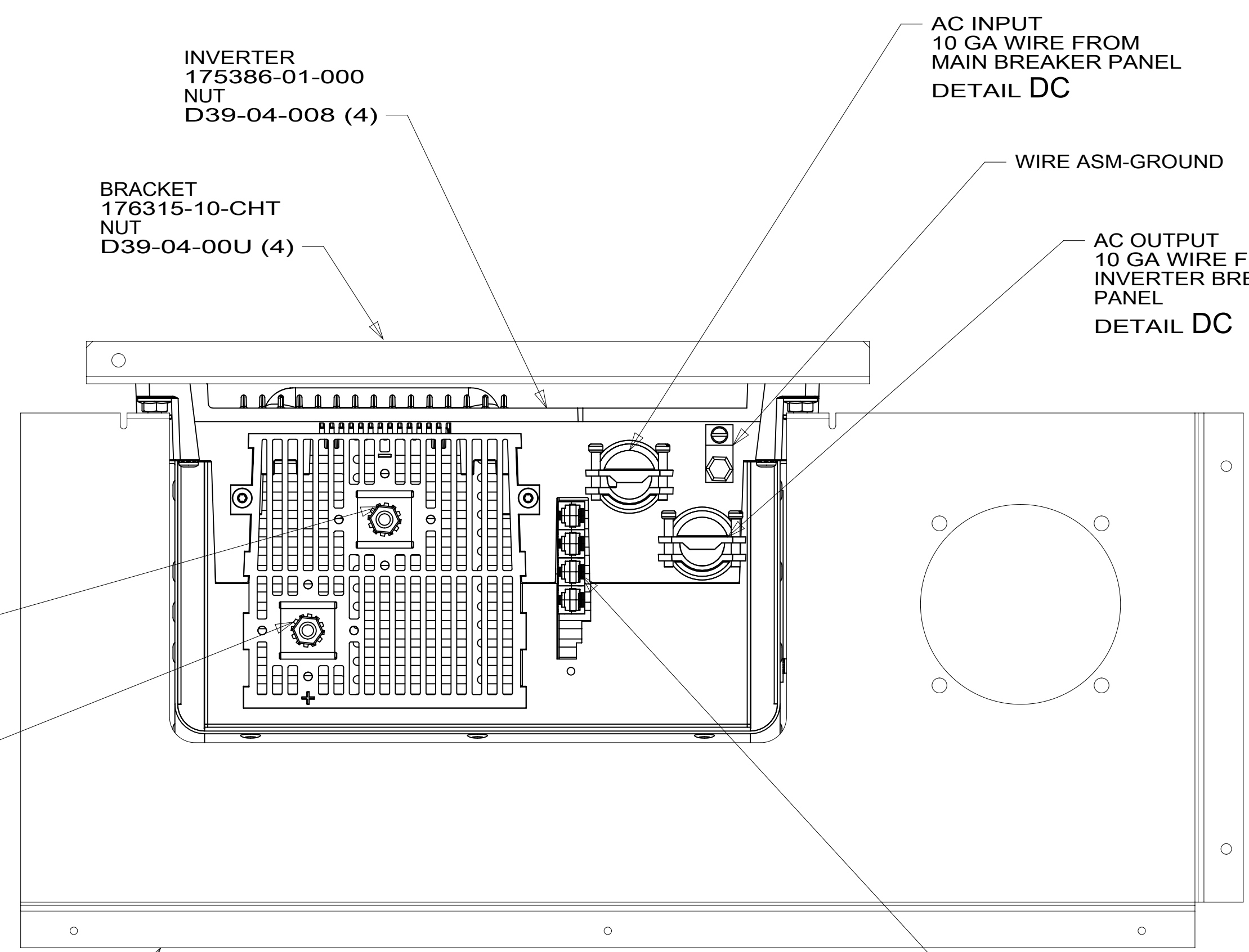
FOR ELECTRICAL TORQUE SPECIFICATIONS SEE DWG NO. 128783-01-000

FOR ELECTRICAL CALLOUTS SEE DWG NO. 121339-01-000

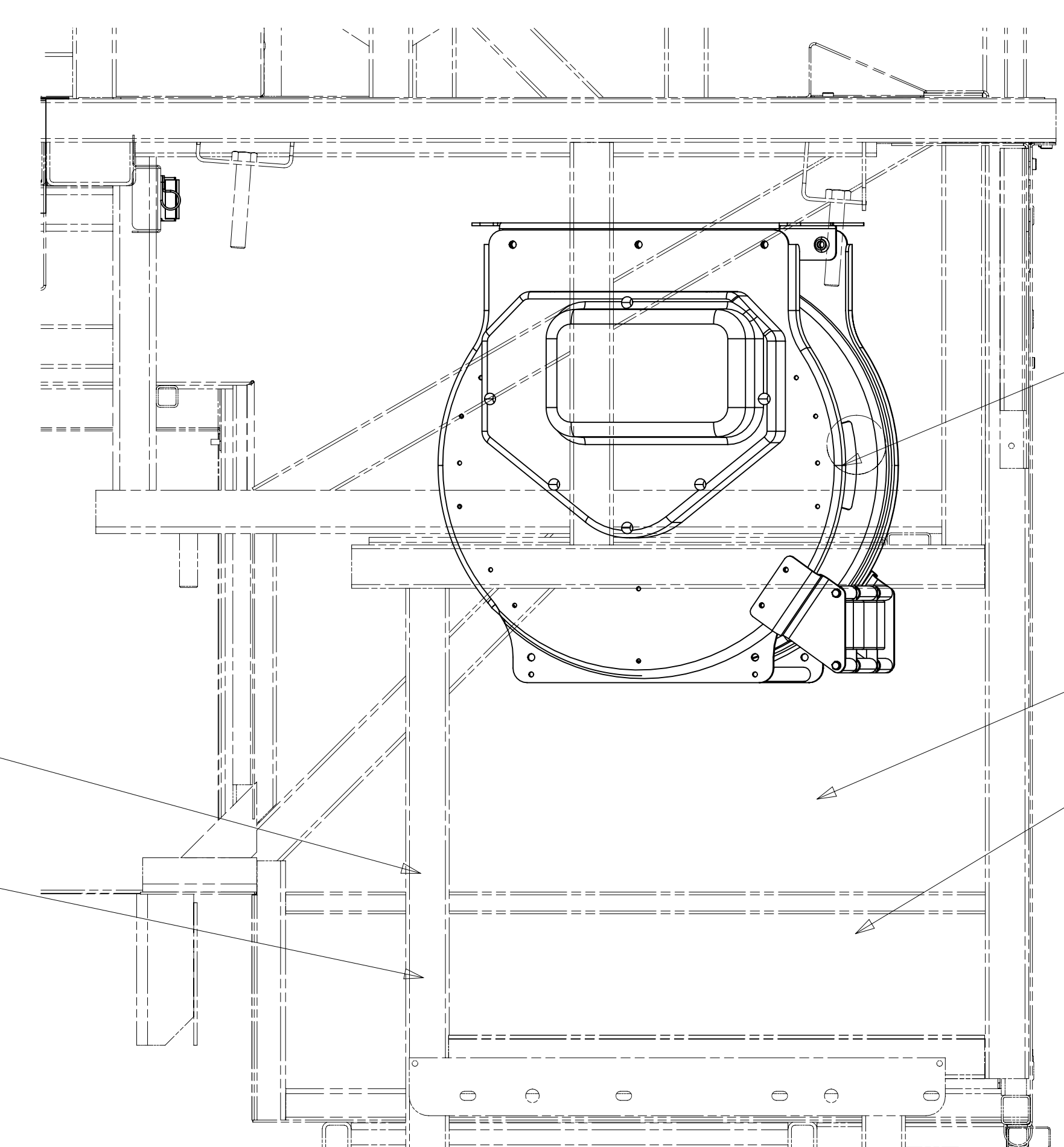
- 685 TV - BATHROOM
- 25Y HOMETHEATER SOUNDBAR SYS-PRM
- 63H AWNING (2) PATIO, ARMLESS
- 265 CODES/STANDARDS-CSA/CMVSS
- 1B1 CODES/STANDARDS USA

DESCRIPTION:		1B1 265	
WIRING INSTL-BODY, 110V			
SHEET:	ITEM/PART NO.:	REV	
3 OF 6	000208439 / 30016001000		

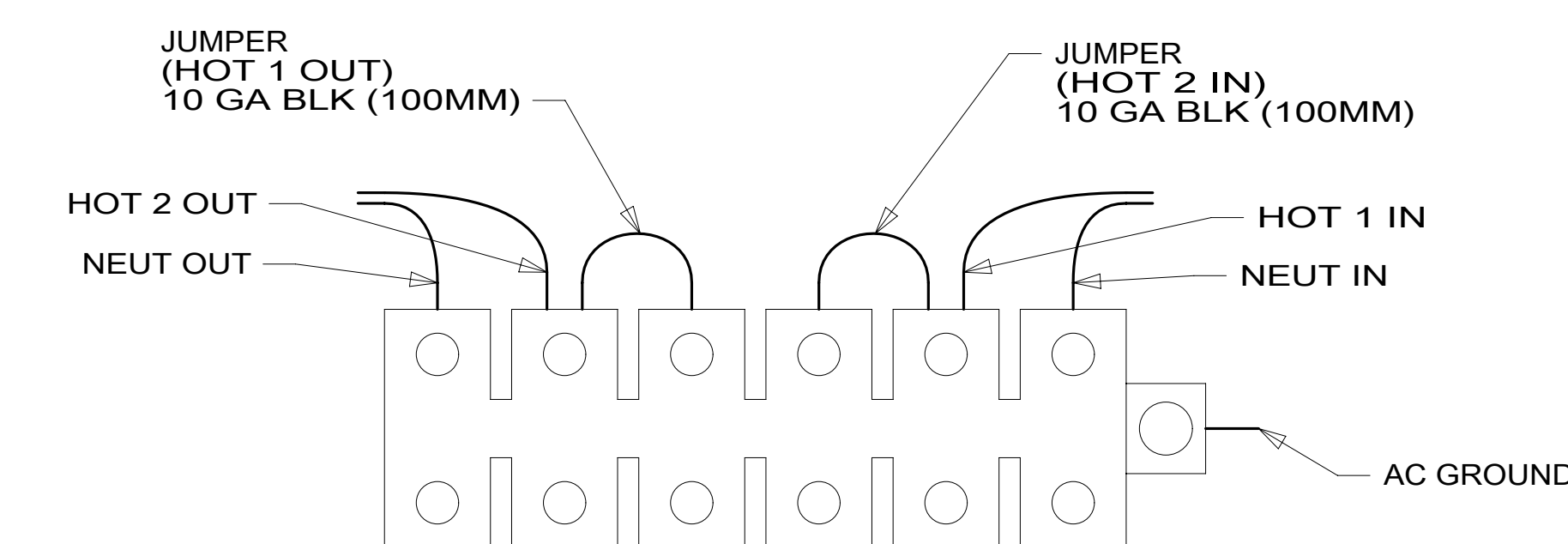
8 7 6 5 4 3 2 1



VIEW DA



VIEW DB



DETAIL DC

- NOTES:
- 4 TORQUE TO 10-12 FT LBS.
 - 3 INSERT BOLT FROM BOTTOM OF COMPARTMENT.
 - 2 SEE BATTERY INSTL FOR ADDITIONAL INFORMATION.
 - 1 SEE LOAD CENTER/ATS ASM FOR ADDITIONAL INFORMATION.

265 CODES/STANDARDS-CSA/CMVSS
1B1 CODES/STANDARDS USA

FOR ELECTRICAL
TORQUE
SPECIFICATIONS
SEE DWG NO.
128783-01-000

FOR
ELECTRICAL
CALLOUTS
SEE DWG NO.
121339-01-000

DESCRIPTION: WIRING INSTL-BODY, 110V	
SHEET: 4 OF 6	ITEM/PART NO.: 000208439 / 30016001000
REV	

8 7 6 5 4 3 2 1 06-Apr-2017

