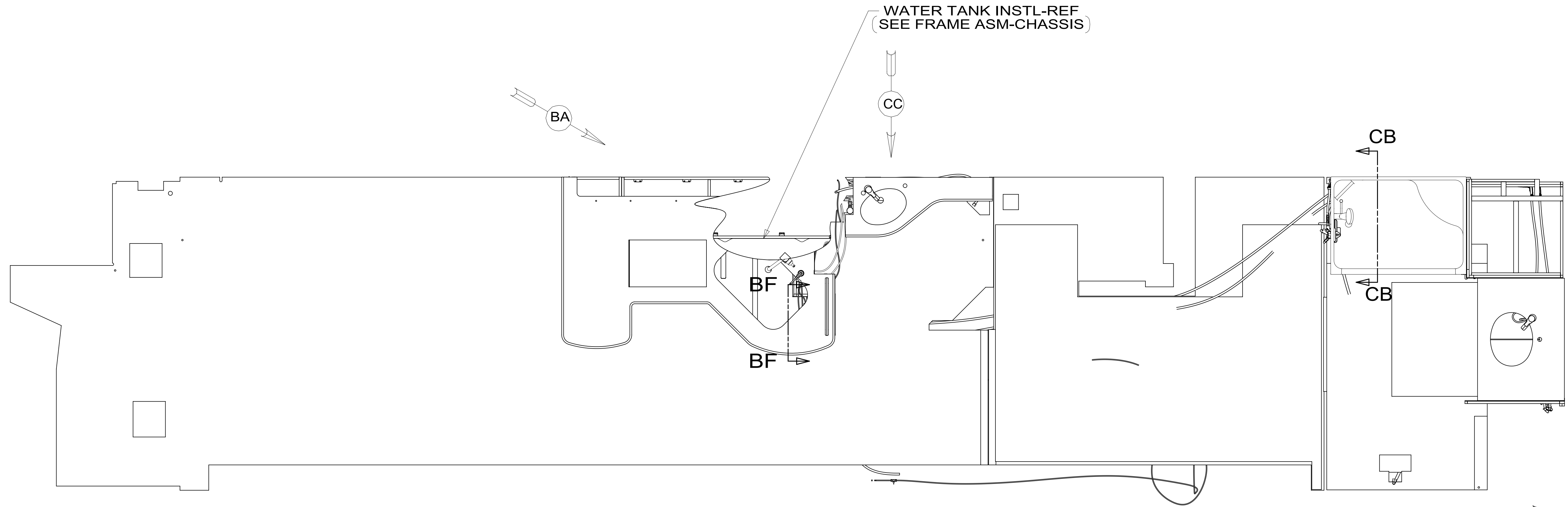


| REV | ZONE | REVISION RECORD | DATE | DFTR-ORIG |
|-----|------|---|----------|-----------|
| A | --- | INITIAL RELEASE | 11/05/15 | 3650 |
| B | --- | UPDATED MODEL. FIXED OUT OF POSITIONS TUBES | 03/15/16 | 3650-2314 |
| C | --- | --- | --- | --- |
| D | --- | REPL. FLTRER SHT2 | 1-17-17 | 1600-2747 |



13 FOR INSTALLATION USE SILICON-ADHESIVE 131264-05-CHT. APPLY ON TOP OF PLATE, PLACE COVER ON, AND PUT ADHESIVE AROUND COVER.

12 INSTALL FAUCET WITHOUT BASEPLATE.

11. REQUIRES 5 GALLONS OF 182955-01-000 ANTIFREEZE FOR WINTERIZATION.

10 VALVE MUST REMAIN OPEN AFTER WATER TEST.

9. FLUSHING SYSTEM REQUIRES 125697-06-000 INSTRUCTION SHEET.

8. ALL CRIMP FITTINGS TO PEX TUBING REQUIRE 1/2" CLAMP 140171-03-000.

7. ALL CRIMP FITTINGS TO PEX TUBING REQUIRE 5/8" CLAMP 140171-04-000.

6 LABEL HOT AND COLD SUPPLY TUBES AND TAPE FITTING TO TUBE BEFORE CABINET SET TO PREVENT MOVEMENT.

5 ADD PIPE WRAP (LADDER SCRAP 110157-02-000) INSULATION.

4 ADD TEFLON TAPE 010405-02-000.

3. ALL TUBING TO BE SECURED AT 1200 INTERVALS MAXIMUM WITH CLAMP 010495-01-000 AND SCREW 000G67-10-12U OR EQUIVALENT.

2. TUBING TO BE INSTALLED WITH SUFFICIENT SLOPE TO PROVIDE DRAINAGE TO NEAREST VALVE.

1. PLASTIC FITTINGS TO BE SEALED WITH SEALANT 084456-01-000.

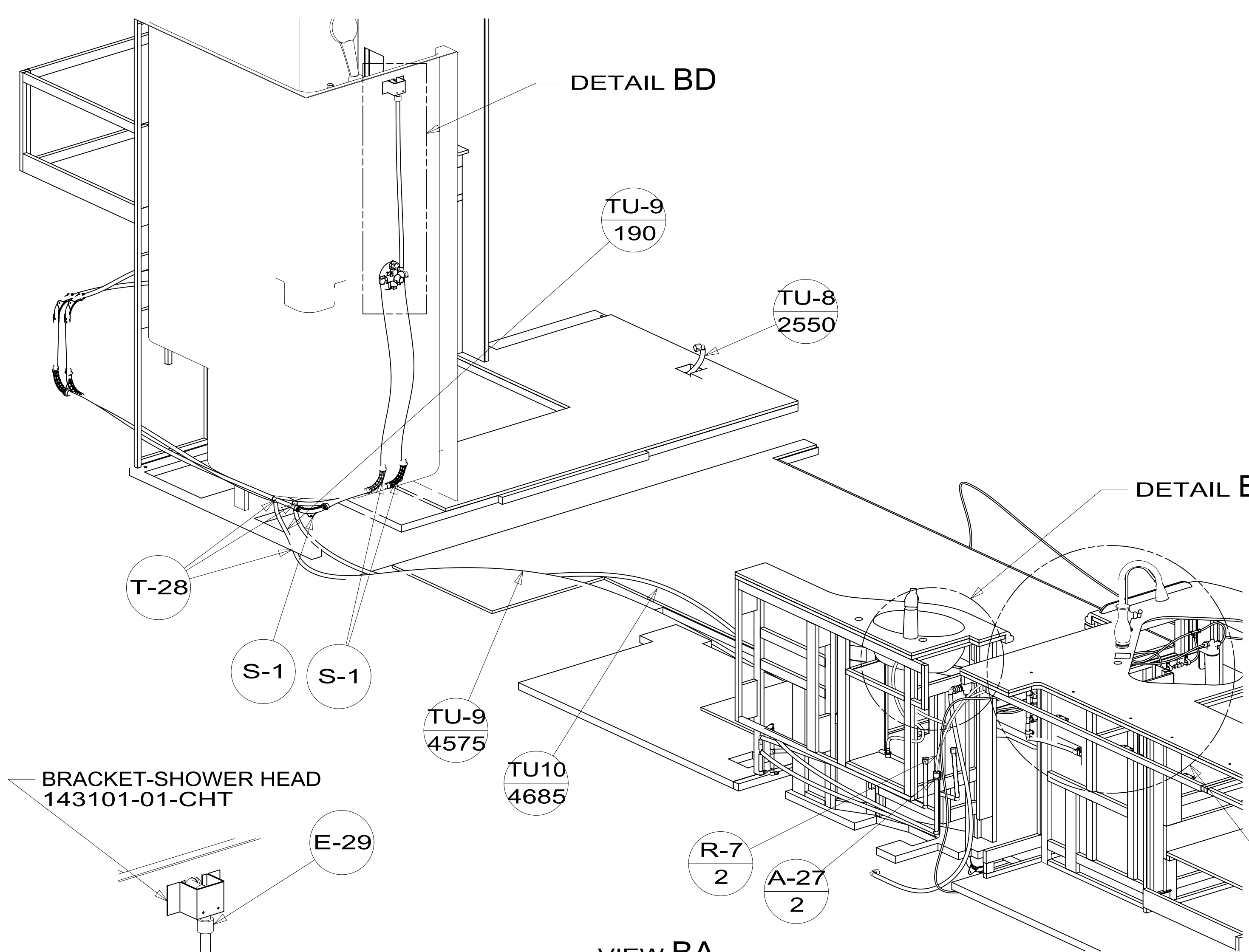
NOTES:

- 21S WASHER & DRYER-PAIR
- 214 DISHWASHER-DRAWER STYLE
- 9PC TAILGATE PACKAGE
- 505 HOSE REEL-WATER,POWERED

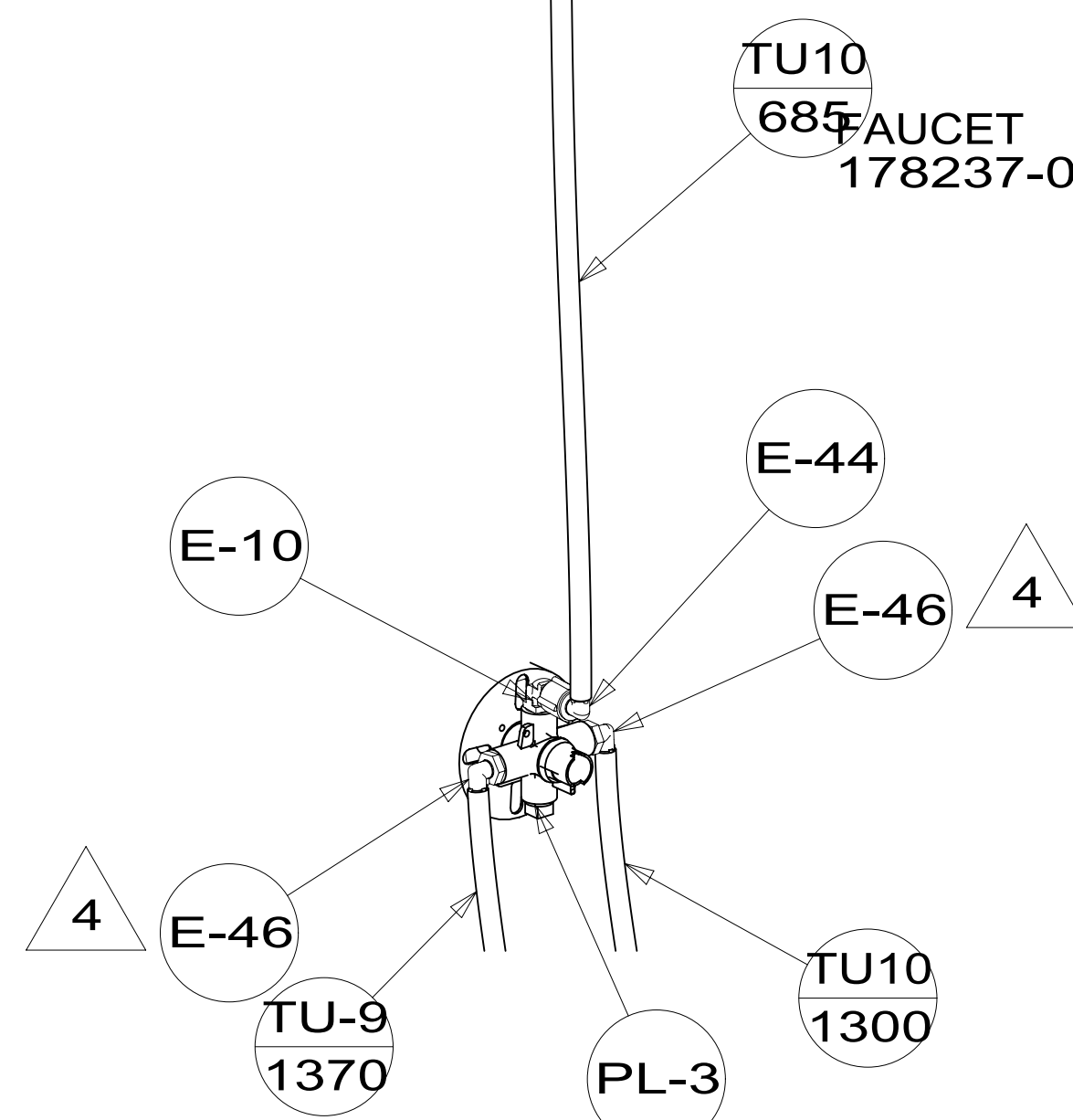


| | | | |
|--|---------------------------------------|-----------------------------------|-------------------|
| DSNR: | | ALL DIMENSIONS ARE IN MILLIMETERS | |
| DFTR: | | MATERIAL: | |
| UNSPECIFIED TOLERANCES: | | | |
| WHOLE DIM (X) | 3 | | |
| ONE-PLACE (X.X) | 1.5 | | |
| TWO-PLACE (X.XX) | 0.50 | | |
| ANGLE | 1° | | |
| REFER TO ES0018 FOR FASTENER TIGHTENING GUIDELINES | | WEIGHT: (LBS) | FIRST USED: (REF) |
| | | | 16 R42QD |
| DESCRIPTION: WATER SYSTEM INSTL | | | |
| SHEET: 1 OF 4 | ITEM/PART NO: 000208282 / 30009401000 | REV: | |

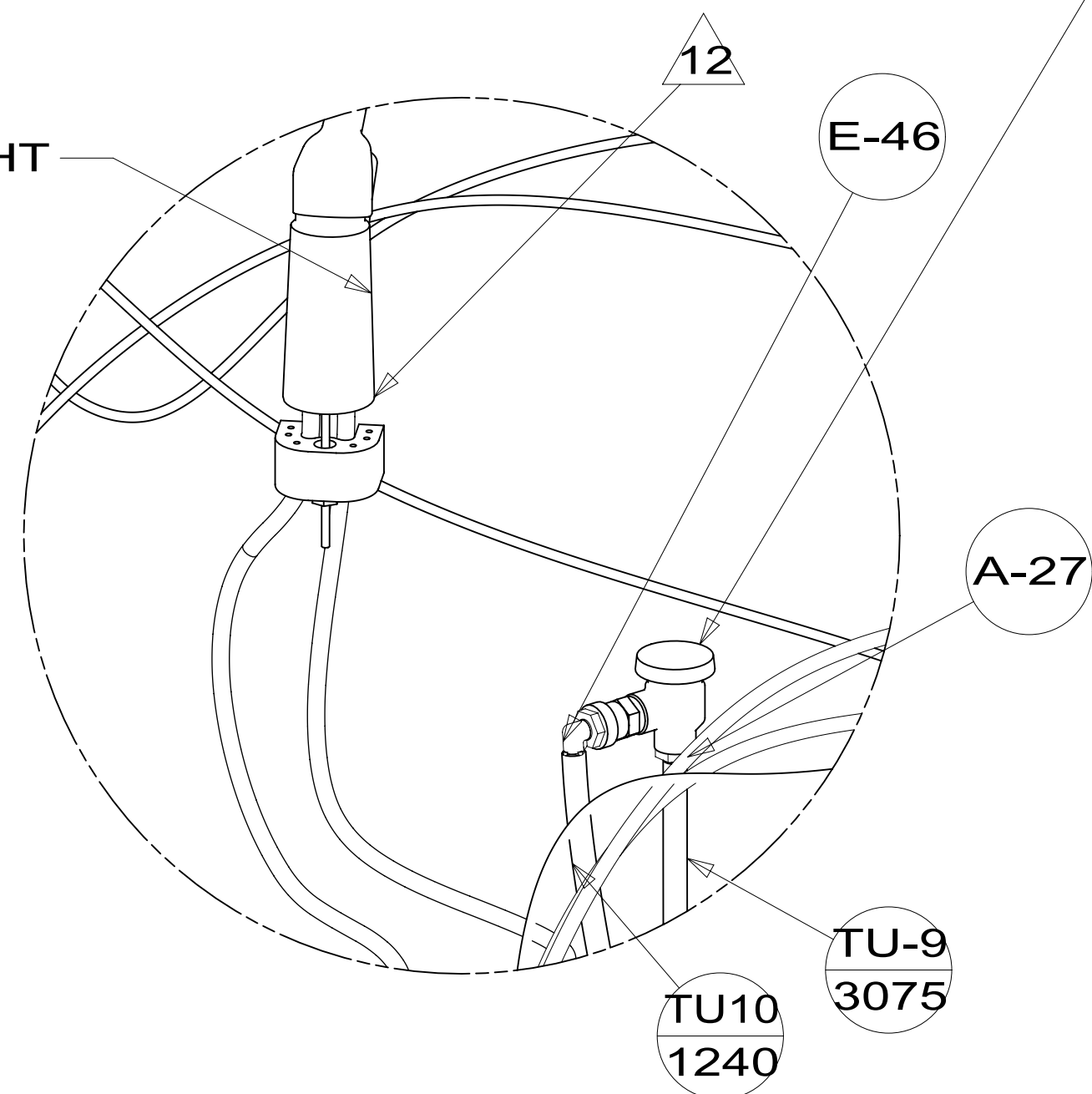
X-X
FOR WATER CALLOUTS SEE DWG NO. 000209446 / 303369-01-000



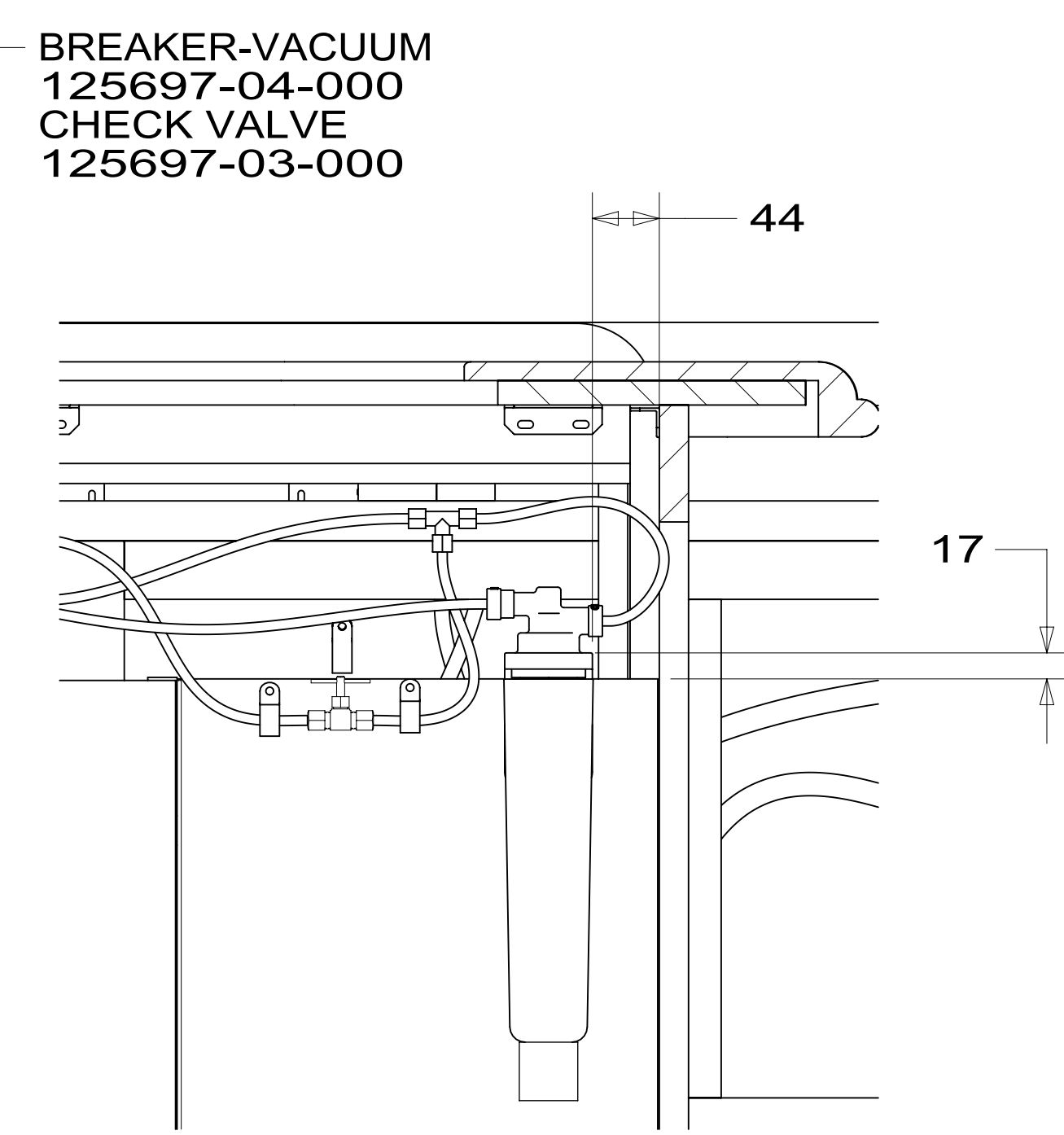
VIEW BA



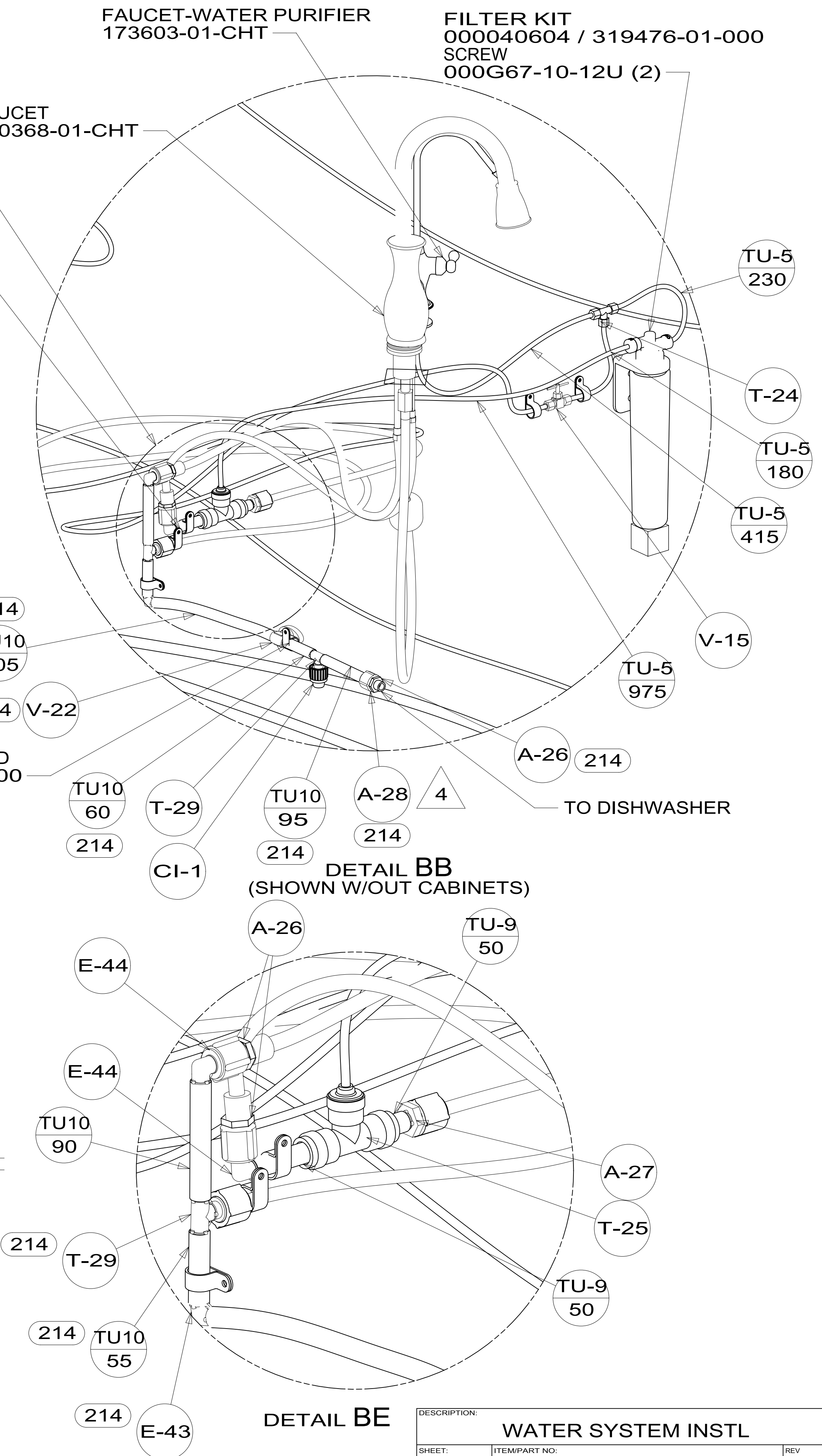
DETAIL BD (SHOWN W/OUT CABINETS)



DETAIL BC (SHOWN W/OUT CABINETS)

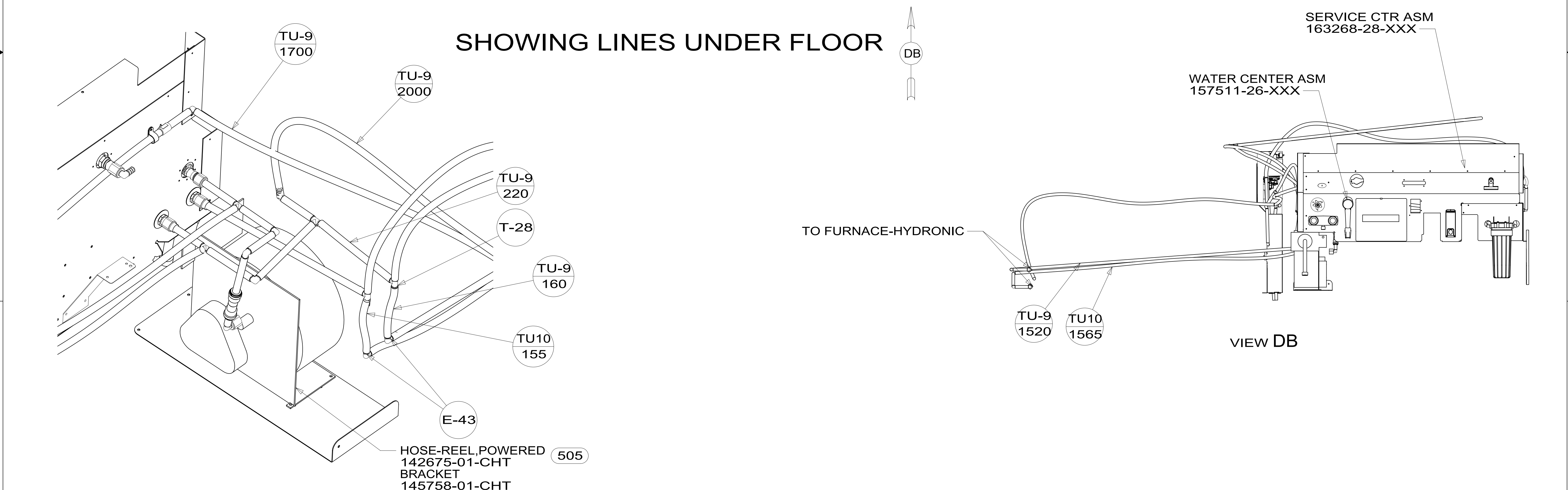
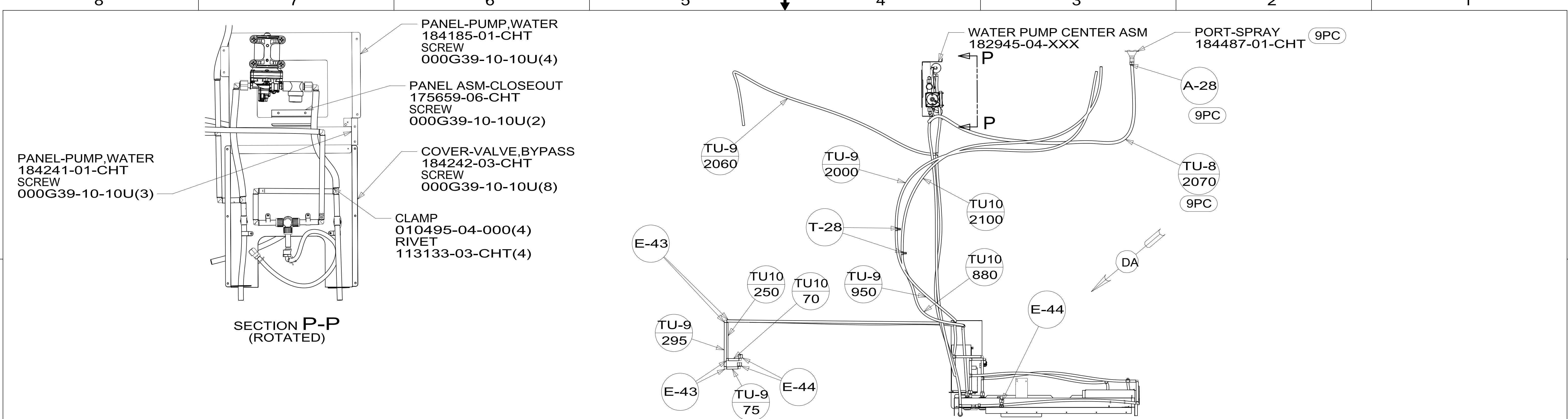


SECTION BF-BF



DETAIL BE

| | | |
|--------------------|-------------------------|-----|
| DESCRIPTION: | | |
| WATER SYSTEM INSTL | | |
| SHEET: | ITEM/PART NO.: | REV |
| 2 OF 4 | 000208282 / 30009401000 | |



| | | | |
|--------------|-------------------------|--------------------|--|
| DESCRIPTION: | | WATER SYSTEM INSTL | |
| SHEET: | ITEM/PART NO: | REV | |
| 4 OF 4 | 000208282 / 30009401000 | | |

10-May-2017