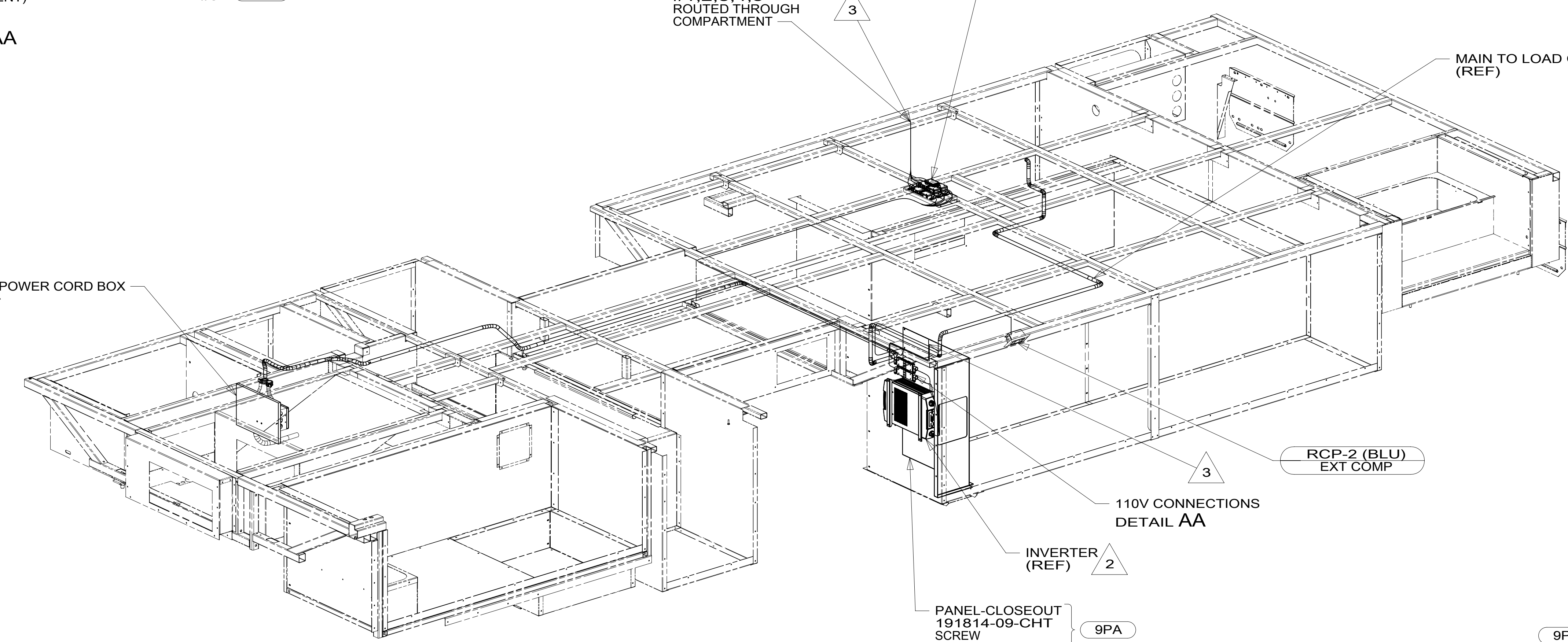


2 POWER CORD BOX



PANEL-CLOSEOUT 191814-09-CHT SCREW G11-08-12U (10)
 PANEL-CLOSEOUT 191814-10-CHT SCREW G11-08-12U (10)
 9PA
 9PC

- 9PA TAILGATE PACKAGE WITHOUT
- 9PC TAILGATE PACKAGE
- 401 INVERTER-DC/AC, 1000 WATT
- 12D ELECTRICAL SYSTEM 30 AMP
- 265 CODES/STANDARDS-CSA/CMVSS
- 1B1 CODES/STANDARDS USA

WINNEBAGO
 COPYRIGHT 2016 WINNEBAGO INDUSTRIES, INC.

DSNR:	ALL DIMENSIONS ARE IN MILLIMETERS	
DIFFR:	MATERIAL:	
UNSPECIFIED TOLERANCES:		
WHOLE DIM (X)	3	
ONE-PLACE (X.X)	1.5	
TWO-PLACE (X.XX)	0.50	
ANGLE	1°	
REFER TO ES0018 FOR FASTENER TIGHTENING GUIDELINES	WEIGHT: (LBS)	FIRST USED:
		17 E29VE
DESCRIPTION: WIRING INSTL-BODY, 110V		
SHEET: 1 OF 5	ITEM/PART NO: 000181674 / 30243801000	REV:

FOR ELECTRICAL TORQUE SPECIFICATIONS SEE DWG NO. 128783-01-000

X-X

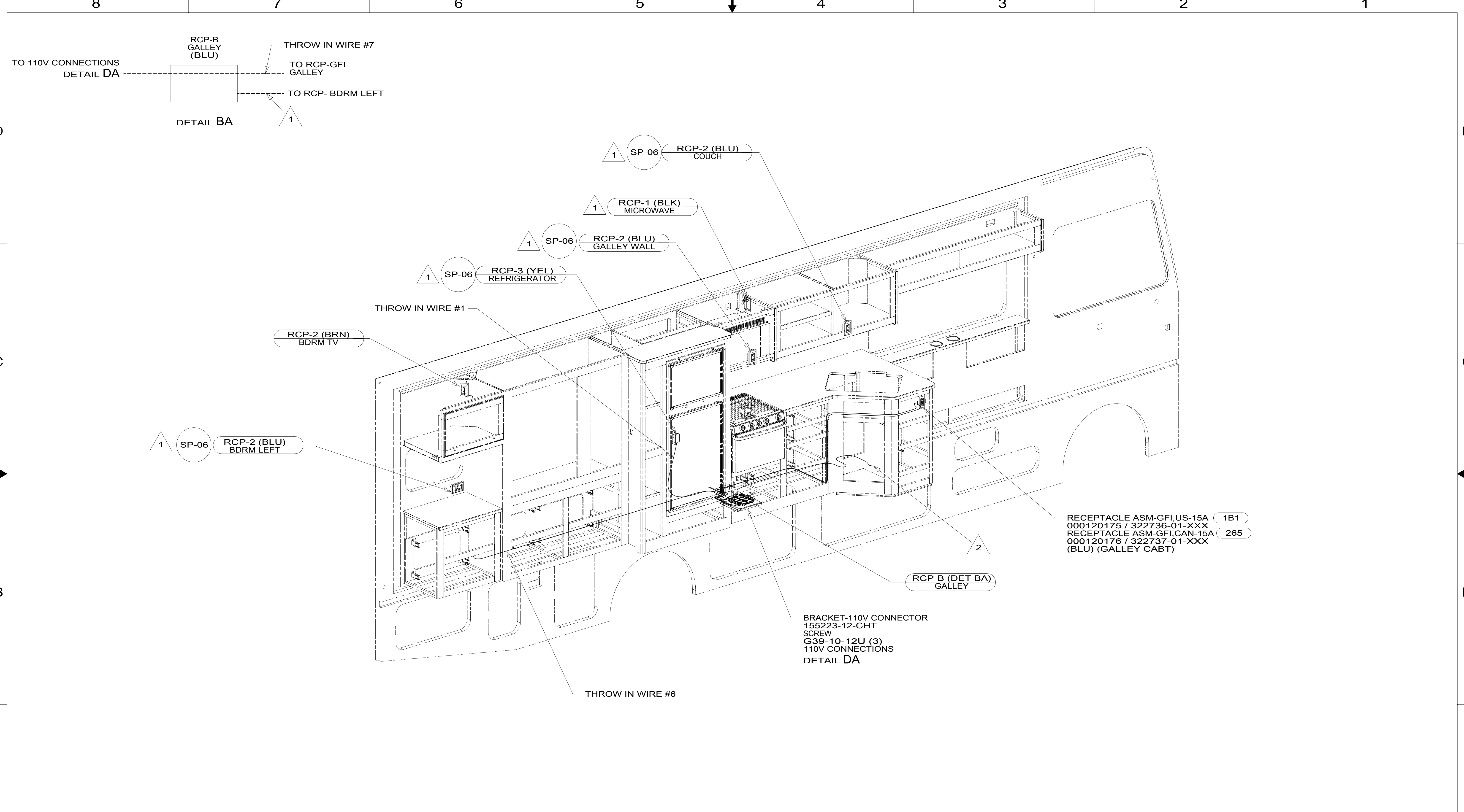
FOR ELECTRICAL CALLOUTS SEE DWG NO. 121339-01-000

- 5 WITHOUT INVERTER, THROW IN WIRE #2 (BRN-2) CONNECTS TO (BRN) FROM LOAD CENTER.
4. AT MINIMUM ALL WIRES TO BE SUPPORTED AND SECURED PER CODE REQUIREMENTS. USE CLAMP 10495 OR 10497 OR WIRE TIE 8343 OR 108046 AND SCREW G67-XX-XXX OR G56-XX-XXX AS APPROPRIATE FOR INSTALLATION.
- 3 WIRE ROUTED THROUGH FLOOR IN THIS AREA.
- 2 SEE LOAD CENTER/ATS FOR ADDITIONAL INFORMATION.
1. WIRES ROUTED UNDER FLOOR.

NOTES:

8 7 6 5 4 3 2 1

8 7 6 5 4 3 2 1



3. AT MINIMUM ALL WIRES TO BE SUPPORTED AND SECURED PER CODE REQUIREMENTS. USE CLAMP 10495 OR 10497 OR WIRE TIE 8343 OR 108046 AND SCREW G67-XX-XXX OR G56-XX-XXX AS APPROPRIATE FOR INSTALLATION.

- 2 WIRE ROUTED THRU FLOOR IN THIS AREA.
- 1 WIRE ROUTED IN SIDEWALL.

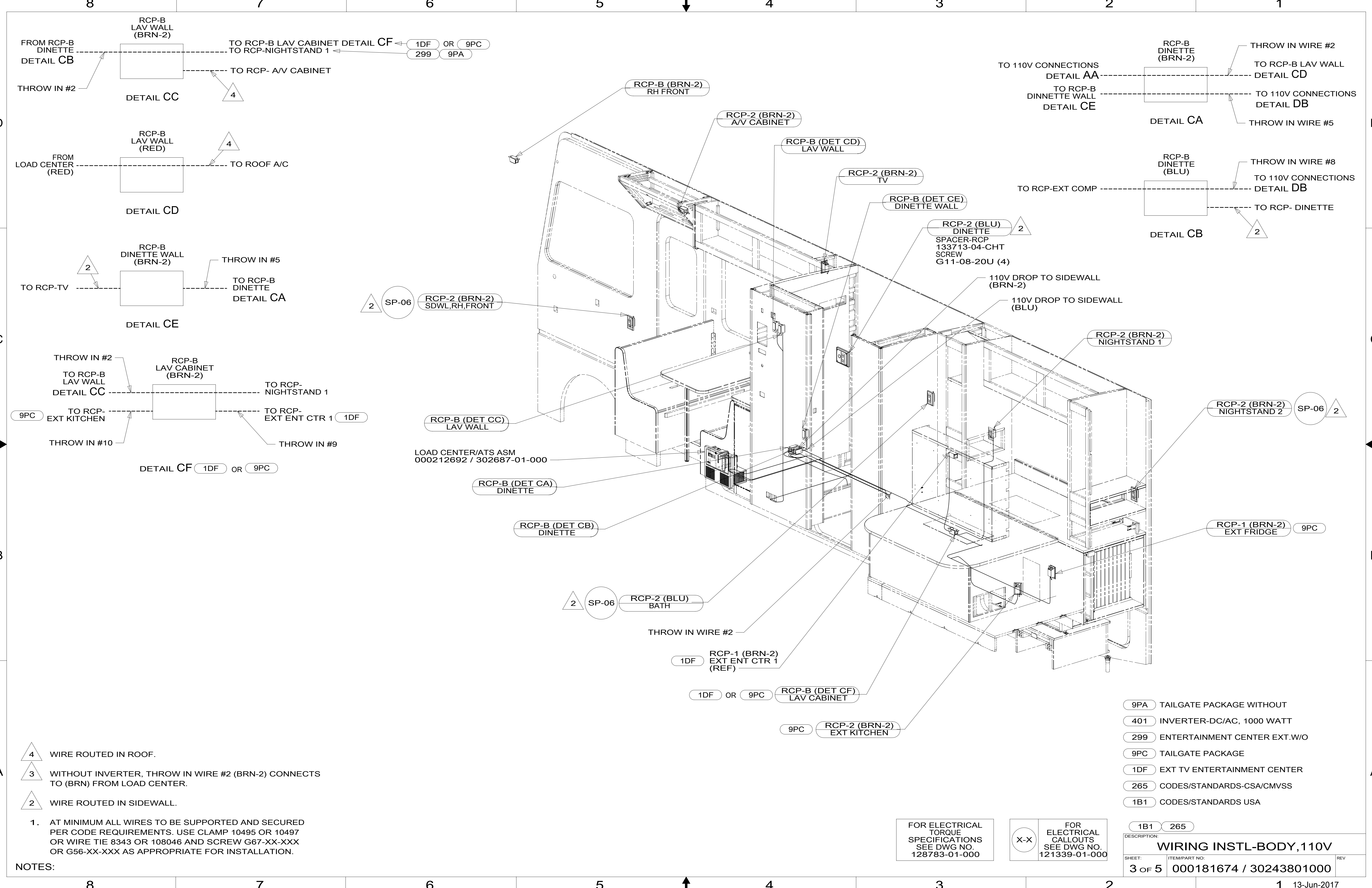
NOTES:

265 CODES/STANDARDS-CSA/CMVSS
 1B1 CODES/STANDARDS USA

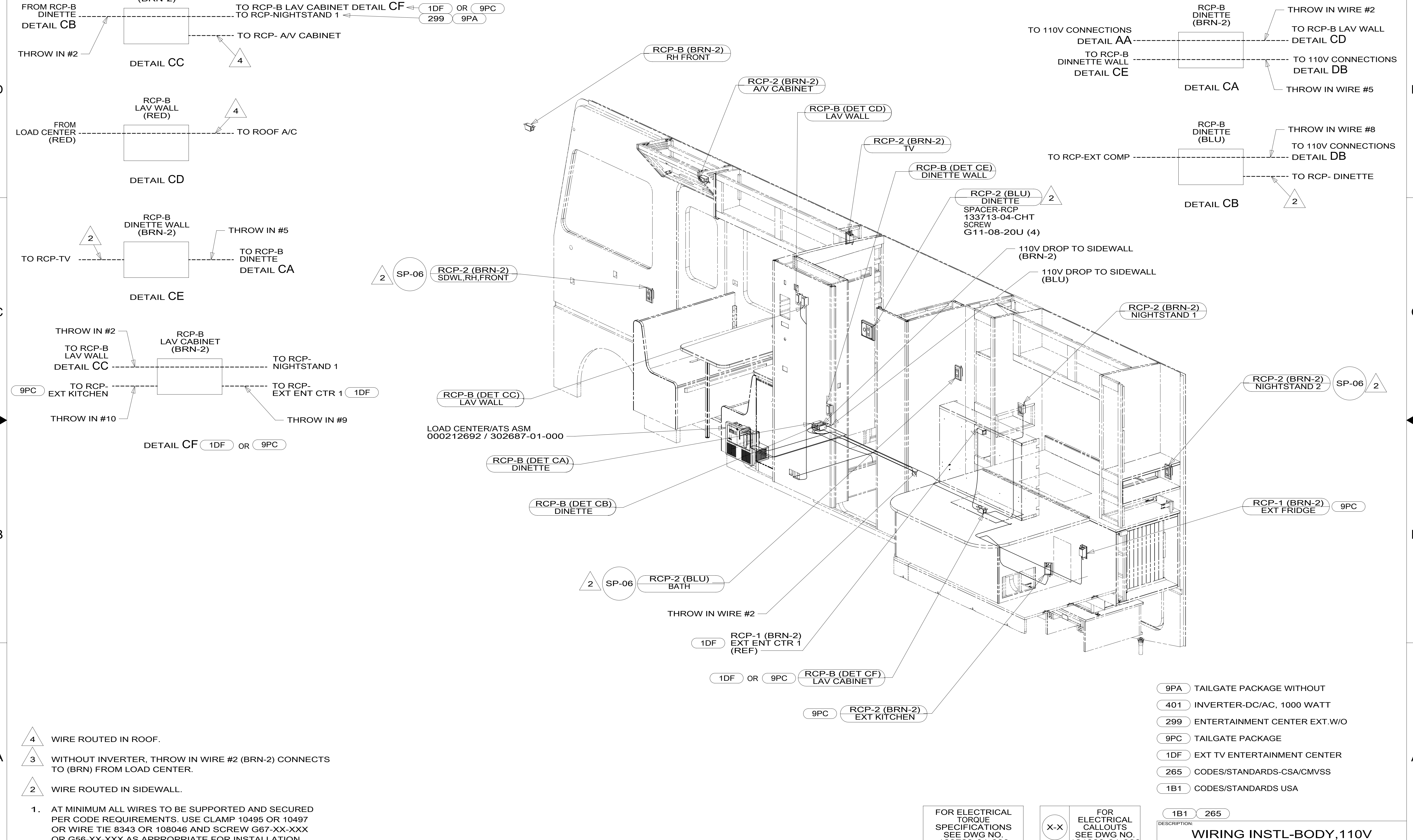
FOR ELECTRICAL TORQUE SPECIFICATIONS SEE DWG NO. 128783-01-000

FOR ELECTRICAL CALLOUTS SEE DWG NO. 121339-01-000

DESCRIPTION:	
WIRING INSTL-BODY, 110V	
SHEET:	ITEM/PART NO.:
2 OF 5	000181674 / 30243801000
REV	



8 7 6 5 4 3 2 1



8 7 6 5 4 3 2 1

- 4 WIRE ROUTED IN ROOF.
- 3 WITHOUT INVERTER, THROW IN WIRE #2 (BRN-2) CONNECTS TO (BRN) FROM LOAD CENTER.
- 2 WIRE ROUTED IN SIDEWALL.

1. AT MINIMUM ALL WIRES TO BE SUPPORTED AND SECURED PER CODE REQUIREMENTS. USE CLAMP 10495 OR 10497 OR WIRE TIE 8343 OR 108046 AND SCREW G67-XX-XXX OR G56-XX-XXX AS APPROPRIATE FOR INSTALLATION.

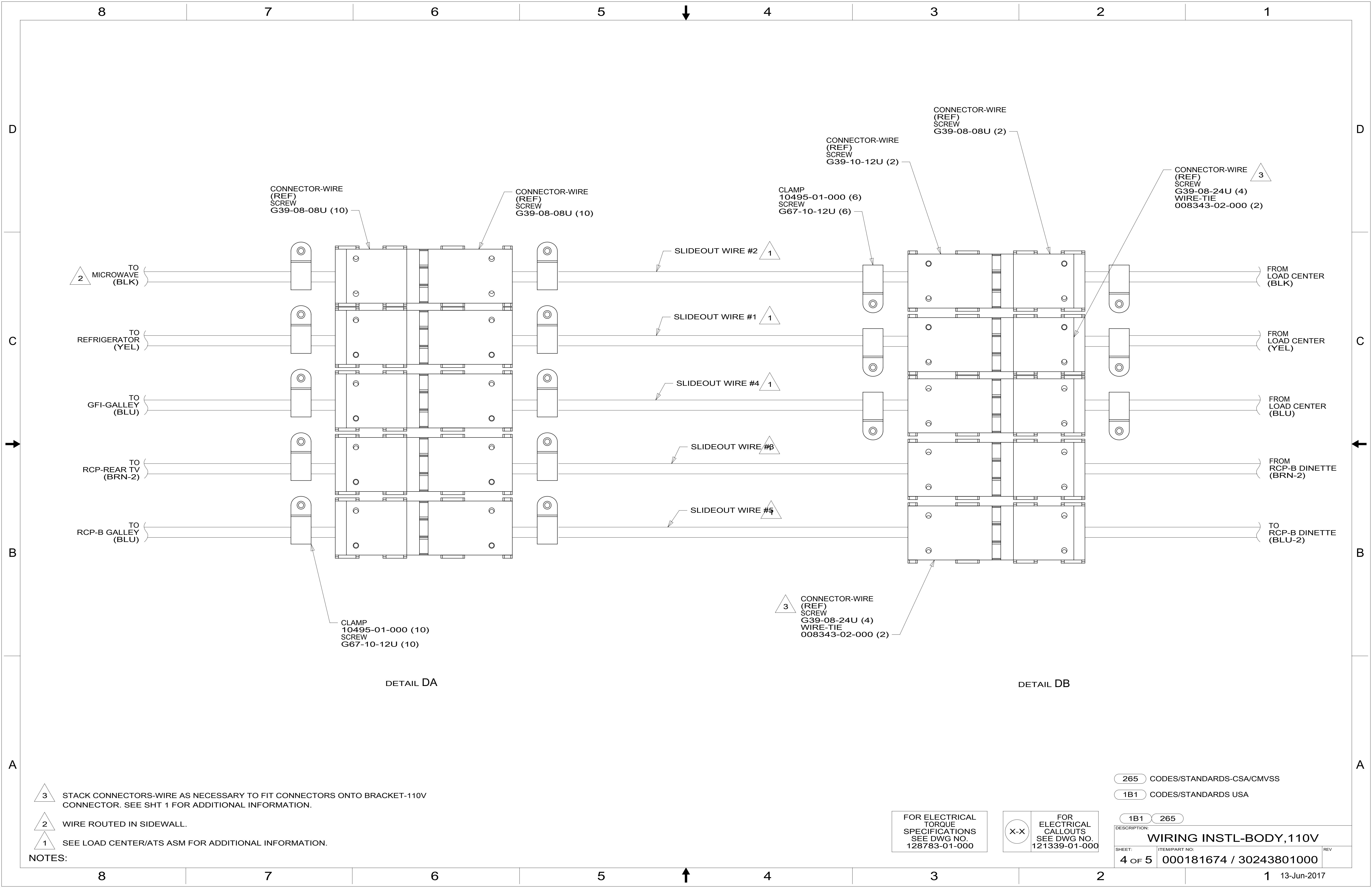
NOTES:

FOR ELECTRICAL TORQUE SPECIFICATIONS SEE DWG NO. 128783-01-000

FOR ELECTRICAL CALLOUTS SEE DWG NO. 121339-01-000

- 9PA TAILGATE PACKAGE WITHOUT
- 401 INVERTER-DC/AC, 1000 WATT
- 299 ENTERTAINMENT CENTER EXT.W/O
- 9PC TAILGATE PACKAGE
- 1DF EXT TV ENTERTAINMENT CENTER
- 265 CODES/STANDARDS-CSA/CMVSS
- 1B1 CODES/STANDARDS USA

DESCRIPTION:	
1B1 265	
WIRING INSTL-BODY, 110V	
SHEET:	ITEM/PART NO:
3 OF 5	000181674 / 30243801000
REV	



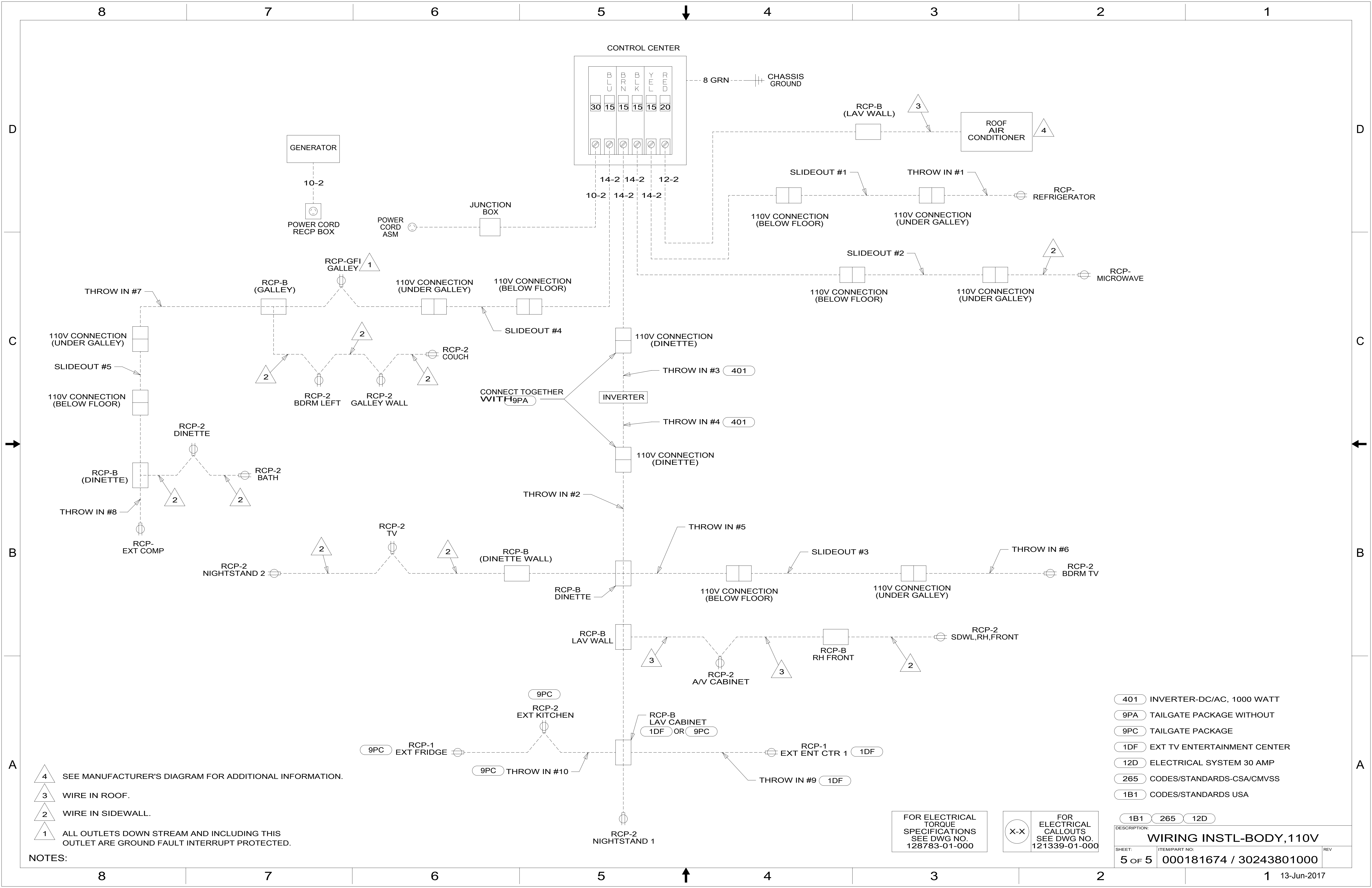
- NOTES:
- 3 STACK CONNECTORS-WIRE AS NECESSARY TO FIT CONNECTORS ONTO BRACKET-110V CONNECTOR. SEE SHT 1 FOR ADDITIONAL INFORMATION.
 - 2 WIRE ROUTED IN SIDEWALL.
 - 1 SEE LOAD CENTER/ATS ASM FOR ADDITIONAL INFORMATION.

265 CODES/STANDARDS-CSA/CMVSS
 1B1 CODES/STANDARDS USA

FOR ELECTRICAL TORQUE SPECIFICATIONS SEE DWG NO. 128783-01-000

FOR ELECTRICAL CALLOUTS SEE DWG NO. 121339-01-000

DESCRIPTION: WIRING INSTL-BODY, 110V		
SHEET: 4 OF 5	ITEM/PART NO: 000181674 / 30243801000	REV



- NOTES:
- 4 SEE MANUFACTURER'S DIAGRAM FOR ADDITIONAL INFORMATION.
 - 3 WIRE IN ROOF.
 - 2 WIRE IN SIDEWALL.
 - 1 ALL OUTLETS DOWN STREAM AND INCLUDING THIS OUTLET ARE GROUND FAULT INTERRUPT PROTECTED.

- 401 INVERTER-DC/AC, 1000 WATT
- 9PA TAILGATE PACKAGE WITHOUT
- 9PC TAILGATE PACKAGE
- 1DF EXT TV ENTERTAINMENT CENTER
- 12D ELECTRICAL SYSTEM 30 AMP
- 265 CODES/STANDARDS-CSA/CMVSS
- 1B1 CODES/STANDARDS USA

FOR ELECTRICAL TORQUE SPECIFICATIONS SEE DWG NO. 128783-01-000

FOR ELECTRICAL CALLOUTS SEE DWG NO. 121339-01-000

DESCRIPTION: WIRING INSTL-BODY, 110V		
SHEET: 5 OF 5	ITEM/PART NO.: 000181674 / 30243801000	REV: