

5 KE,WJ TO SPRINTER WIRING
DETAIL CC

HT (CONNECTS TO COACH
BATTERY GROUND)

BATTERY INSTL
187248-01-000

4 CABLE ASM-
COACH BATTERY
(YEL)

401 4 CABLE ASM-GND
139776-02-011
TO INVERTER CASE GND

4 CABLE ASM-GENERATOR
(GRN)

401 4 CABLE ASM-INVERTER
(ORG)
CABLE ASM-INVERTER GND
(BLK)

TO GROUND BOLT
NUT
D39-06-00U (2)

CLAMP
DETAIL CE

BATTERY CABLES
TO GENERATOR 33F

GENERATOR CONTROL
CABLES 33F 1

TO WIRE
ASM-COACH

CABLE ASM-
GENERATOR
GND (BLK) 4

8 PIN HSG
TO GENERATOR 52G

CABLE ASM-
STARTER (RED)
DETAIL AA

RADIO ANTENNA
CABLE TO RADIO

CB CB

BA

64A 8 AFM,WJ
TO STABILIZER
INDICATOR LIGHT & ALARM

TO PSM
(AEU,AEW,AEZ,AEX,
AEY,AFA,AFB,AFC)
DETAIL CB

FRONT
AXLE

1285 DATUM

CLAMP
DETAIL CE

TO LP SHUTOFF SWITCH
DETAIL CF

CLAMP
DETAIL CE

GROMMET
023942-01-000

6 TO SLIDEOUT CONTROL

3

3

3

7

3

3

3

4 PIN HSGS
TO WIRE ASM-
TAILLAMPS

MONITOR CABLE TO
BDRM SLIDEOUT

WIRE ASM
ROUTED ABOVE FLOOR
IN THIS AREA

TO REAR
SLIDEOUT
CONTROL 6

TO POWERED TOILET
(AEP,AER)

GROMMET
023942-01-000

KKE,MP
TO LP VALVE

TO SLIDEOUT

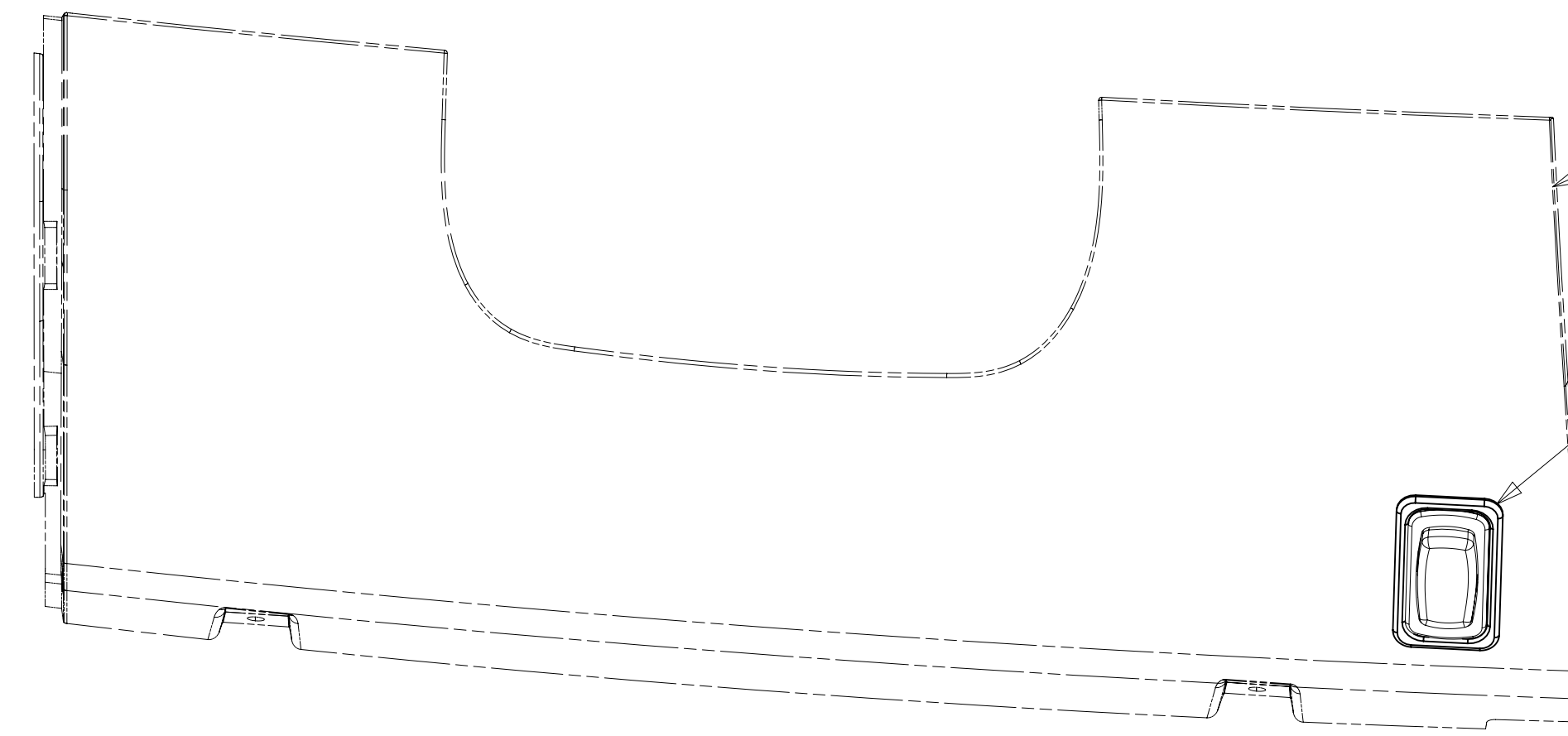
JT,MP
TO LP TANK

CLAMP
DETAIL CE

GROMMET
023942-01-000 401

TO STABILIZER
SWITCHES 64A

- NOTES:
- 9 FOR CUTOUT DIMENSIONS SEE DETAIL CA AND DETAIL CG.
 - 8 SECURE WIRE HARNESS WITH CABLE TIE 008343-02-000.
 - 7 TIE-WIRE MOUNT 8343-04-000. USE HOLES IN SLIDEOUT MOUNTING TRAY.
 - 6 SEE WIRING INSTL-BODY, 12V FOR ADDITIONAL INFORMATION.
 - 5 ROUTE WIRES THROUGH CAB FLOOR UNDER DRIVERS SEAT PEDESTAL.
 - 4 SEE BATTERY INSTL FOR ADDITIONAL INFORMATION.
 - 3 CLAMP 83610-02-000, SCREW G39-08-12U. DO NOT DRILL OR SCREW INTO SPRINTER FRAME. USE ALUMINUM RISERS.
 - 2. SECURE CONDUIT 41953, TAB AS REQUIRED, OVER ALL WIRES IN CONTACT WITH SHARP EDGES.
 - 1 CABLE SUPPLIED WITH DIESEL GENERATOR WITH 33F



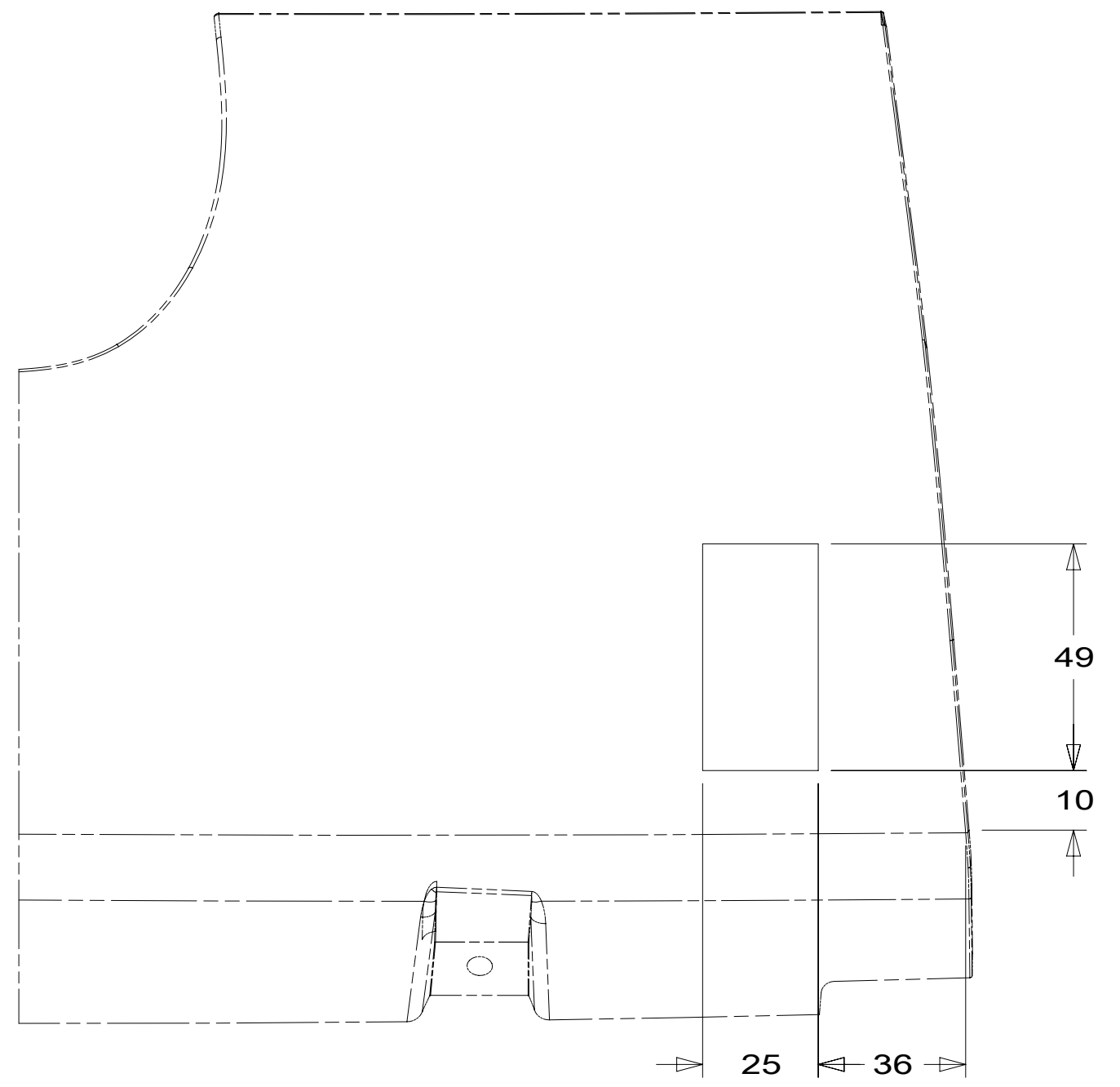
VIEW BA

FOR ELECTRICAL
TORQUE
SPECIFICATIONS
SEE DWG NO.
128783-01-000

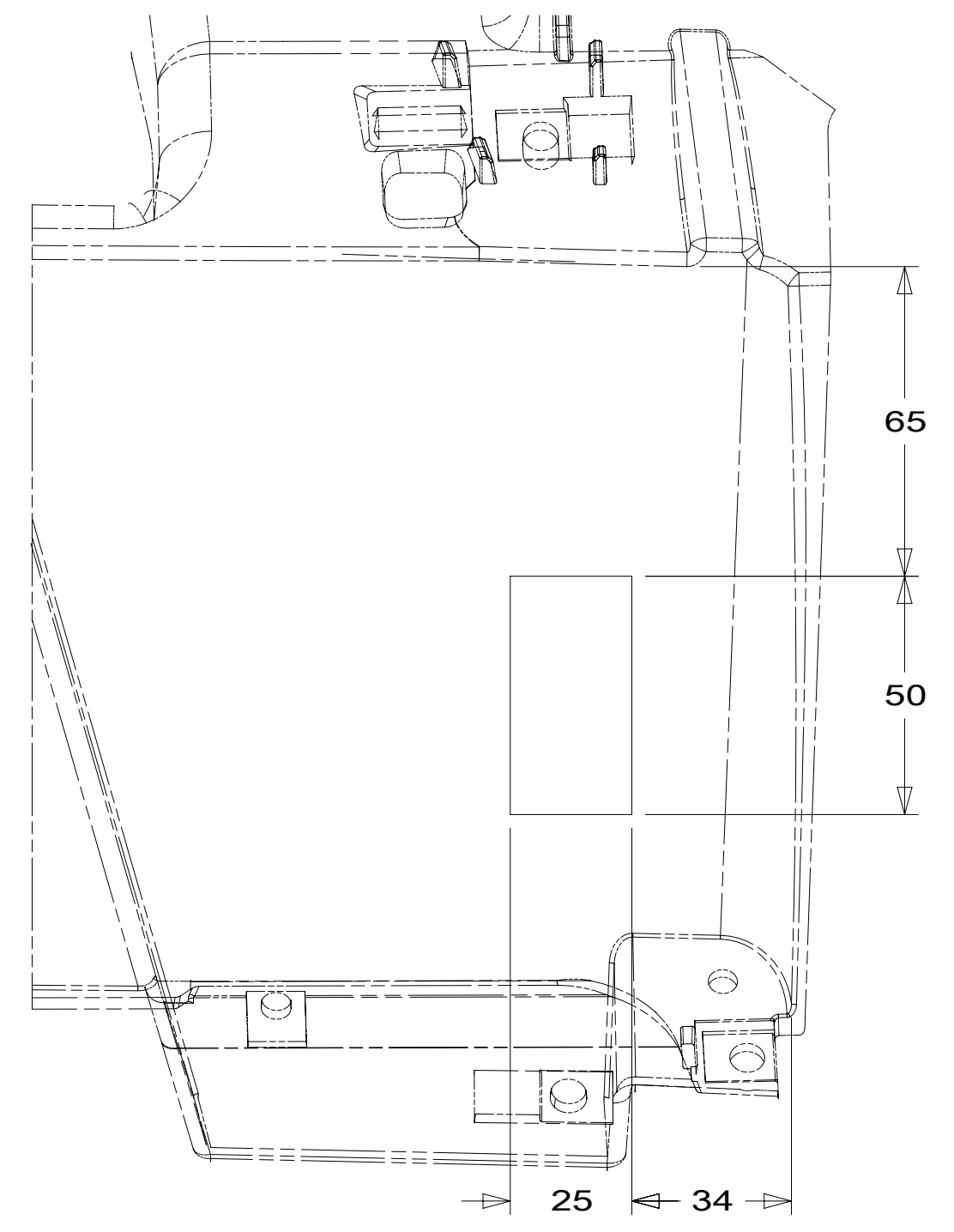
FOR
ELECTRICAL
CALLOUTS
SEE DWG NO.
121339-01-000

- 64A JACKS-STABILIZING, ELECTRIC
- 401 INVERTER-DC/AC, 1000 WATT
- 1MY MERCEDES 11030# DIESEL 4 CYL
- 33F GEN-3.5 KW ONAN DIESEL
- 52G GEN-3.6KW ONAN LP MICROQUIET
- 1MP MERCEDES 11030# DIESEL 6 CYL
- 265 CODES/STANDARDS-CSA/CMVSS
- 1B1 CODES/STANDARDS USA

DESCRIPTION:		1B1 265 1MP 1MY
WIRING INSTL-CHASSIS		
SHEET:	ITEM/PART NO.:	REV
2 OF 3	000181387 / 30231001000	



DETAIL CA 5



DETAIL CG 6

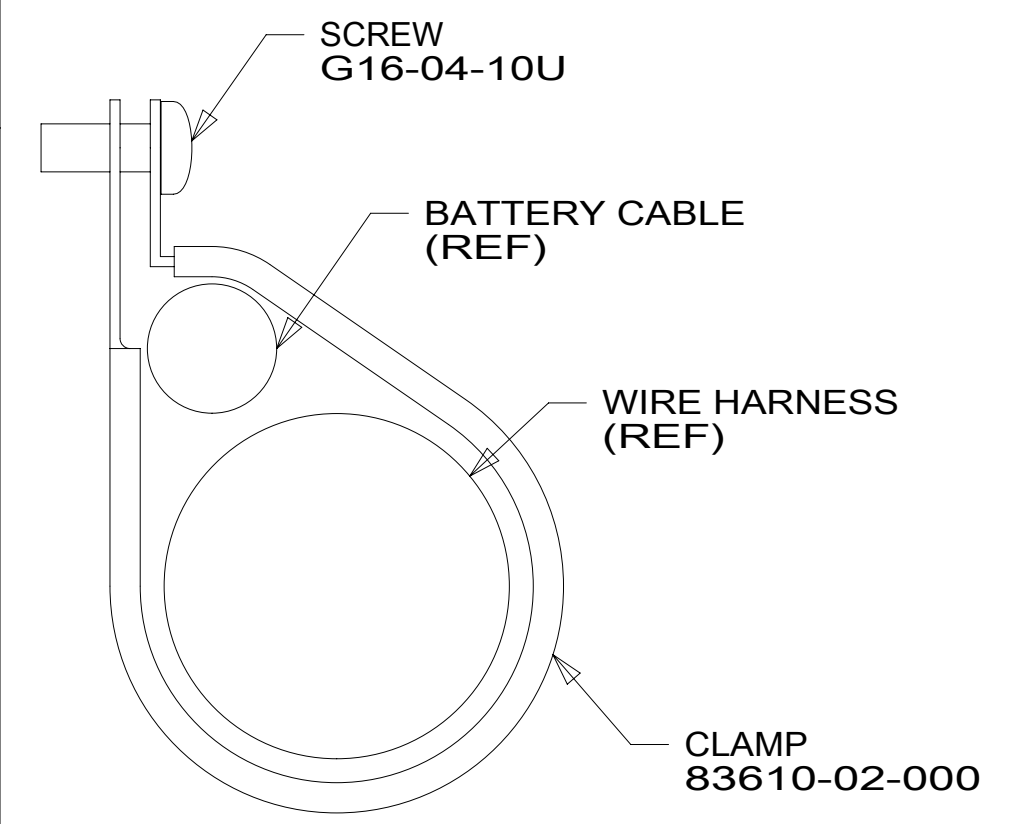
4 CHASSIS ELECTRICAL CIRCUIT BREAKERS

4 BATTERY MODE SOLENOID

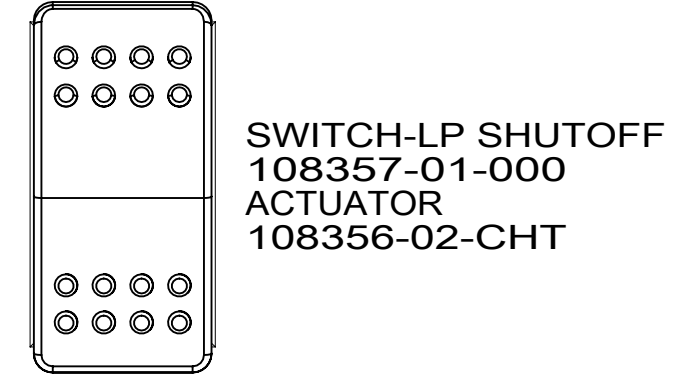
CHASSIS PASSENGER SEAT PEDASTAL

BATTERY DISCONNECT RELAY 4

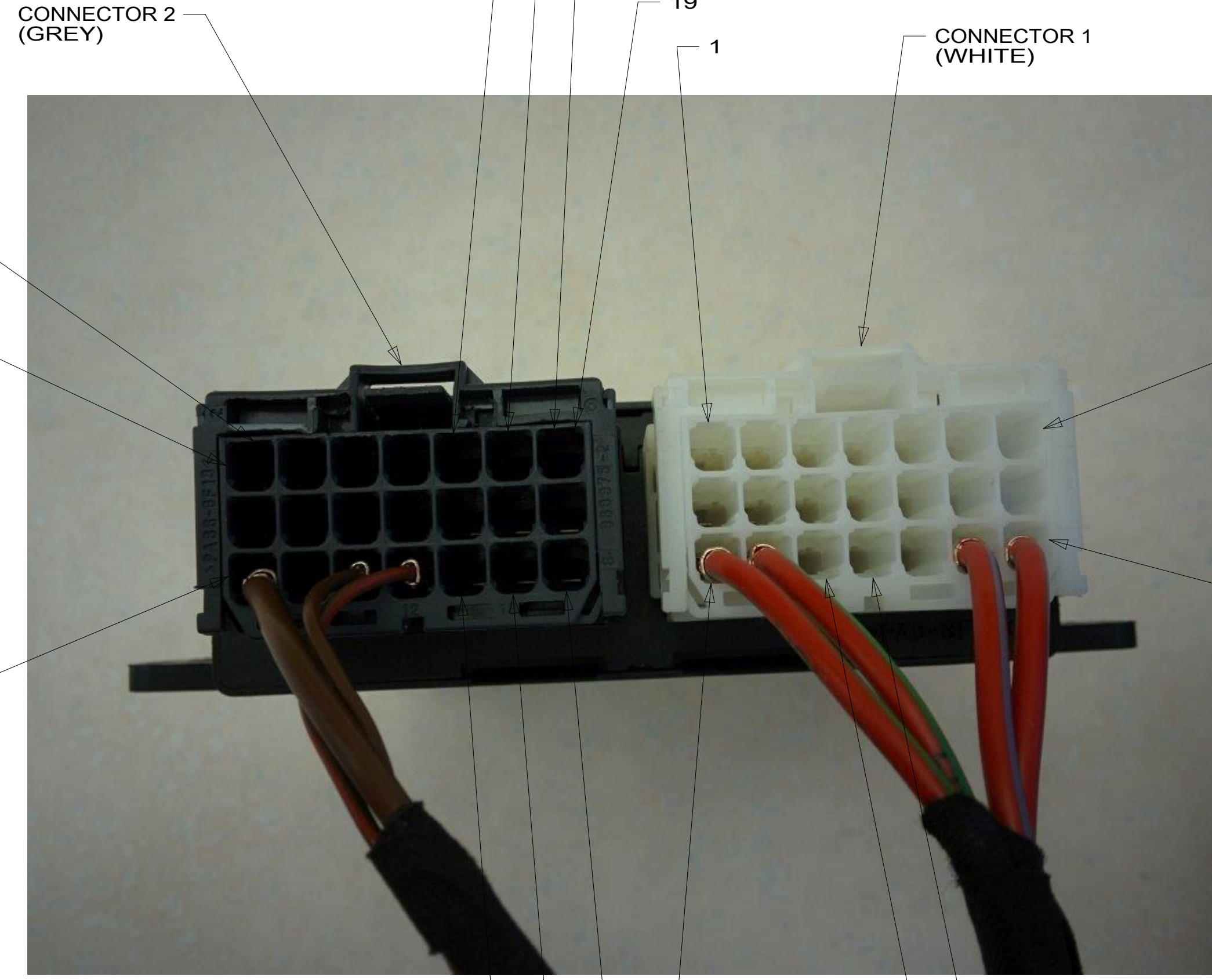
DETAIL CD



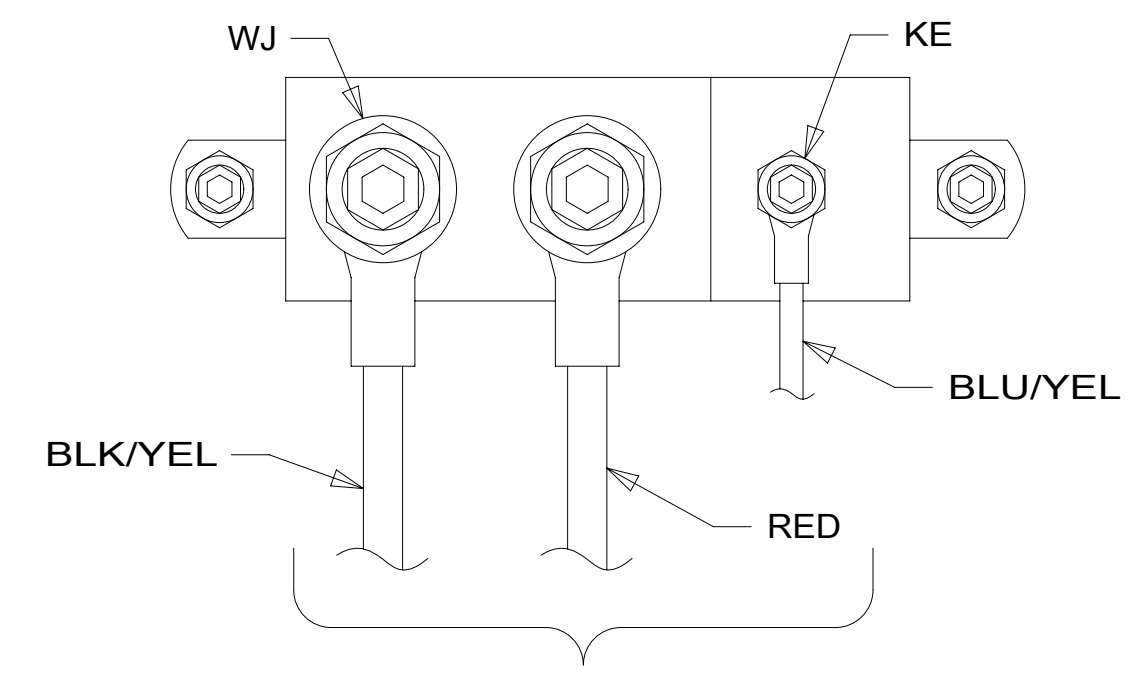
DETAIL CE (4 PLACES)



DETAIL CF



DETAIL CB 1



DETAIL CC 3

- NOTES:
- 6 DASH STRUCTURE LOCATED BEHIND LOWER DASH PANEL.
 - 5 LOWER DASH PANEL.
 - 4 SEE CHASSIS ELECTRICAL BOX ASM FOR ADDITIONAL INFORMATION.
 - 3 CONNECTION POINT IS LOCATED UNDER DRIVERS SEAT.
 - 2. SECURE CONDUIT 41953, TAB AS REQUIRED, OVER ALL WIRES IN CONTACT WITH SHARP EDGES.
 - 1 PSM IS LOCATED UNDER DRIVERS SEAT.

FOR ELECTRICAL TORQUE SPECIFICATIONS SEE DWG NO. 128783-01-000

X-X FOR ELECTRICAL CALLOUTS SEE DWG NO. 121339-01-000

- 1MP MERCEDES 11030# DIESEL 6 CYL
- 1MY MERCEDES 11030# DIESEL 4 CYL
- 265 CODES/STANDARDS-CSA/CMVSS
- 1B1 CODES/STANDARDS USA

DESCRIPTION:		1B1 265 1MY 1MP	
WIRING INSTL-CHASSIS			
SHEET:	ITEM/PART NO.:	REV	
3 OF 3	000181387 / 30231001000		