

8

7

6

5

4

3

2

1



D

D

C

C

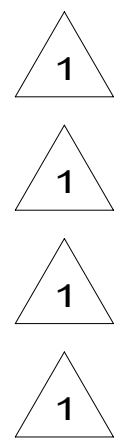
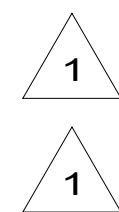
B

B

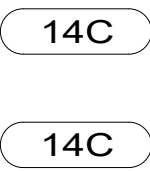
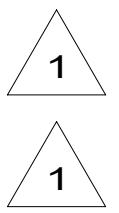
A

A

RED	1B1	136135-07-081
	265	136136-07-081
GRN	1B1	136135-08-081
	265	136136-08-081
YEL	1B1	136131-05-058
	265	136134-05-058
GLD	1B1	136131-10-083
	265	136134-10-083
GLD-2	1B1	136131-20-065
	265	136134-20-065
BLU	1B1	136131-02-113
	265	136134-02-113
BRN	1B1	136131-03-200
	265	136134-03-200
PUR	1B1	136131-04-090
	265	136134-04-090



ORG	1B1	136131-16-028
	265	136134-16-028
BLK	1B1	136131-06-058
	265	136134-06-058
GRY	1B1	136131-15-065
	265	136134-15-065
INVERTER CHARGER MAIN	1B1	136137-01-040
	265	136138-01-040
INVERTER CHARGER SUB MAIN	1B1	136137-01-040
	265	136138-01-040
CABLE ASM-MAIN,6 AWG		176841-01-034
MAIN GROUND		136145-01-025
ATS GROUND		136145-01-020
INVERTER GROUND		136145-04-022
GENERATOR CABLE ASM		136148-02-109



- 14C FIREPLACE-ELECTRIC
- 265 CODES/STANDARDS-CSA/CMVSS
- 1B1 CODES/STANDARDS USA

- 1B1 265



COPYRIGHT 2016 WINNEBAGO INDUSTRIES, INC.

DSNR:		ALL DIMENSIONS ARE IN MILLIMETERS	
DFFR:		MATERIAL:	
UNSPECIFIED TOLERANCES:			
WHOLE DIM (X)	: 3		
ONE-PLACE (X.X)	: 1.5		
TWO-PLACE (X.XX)	: 0.50		
ANGLE	: 1°		
REFER TO ES0018 FOR FASTENER TIGHTENING GUIDELINES		WEIGHT: (LBS)	FIRST USED:
			17 L38W
DESCRIPTION: LOAD CENTER/ATS ASM			
SHEET:	ITEM/PART NO.:	REV:	
1 OF 4	000181272 / 30129101000		

FOR ELECTRICAL TORQUE SPECIFICATIONS SEE DWG NO. 128783-01-000

FOR ELECTRICAL CALLOUTS SEE DWG 000228177 344479-01-000

NOTES:
1 SEE DETAIL BA FOR CONNECTOR INSTALLATION.

8

7

6

5

4

3

2

1

1 25-May-2022

8

7

6

5

4

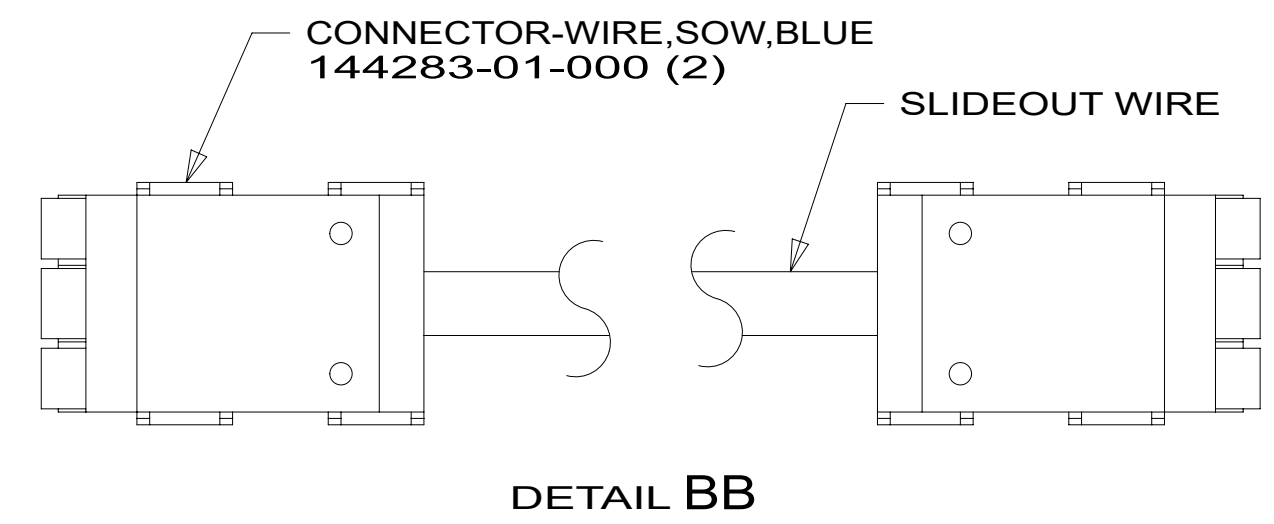
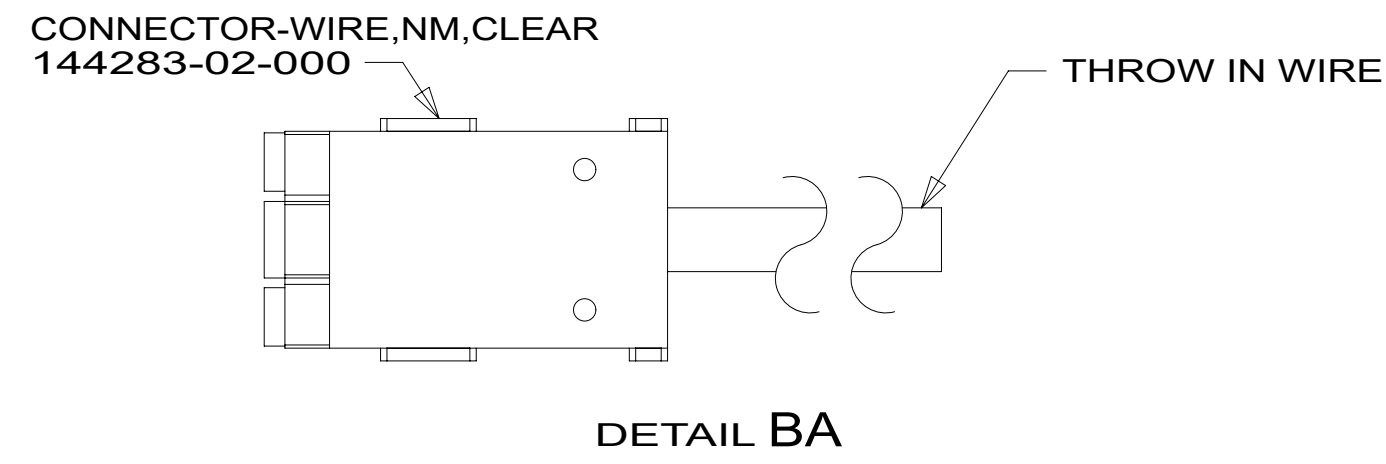
3

2

1

THROW IN WIRE #1	1B1	136131-02-055	1
	265	136134-02-055	1
THROW IN WIRE #2	1B1	136131-04-090	
	265	136134-04-090	
THROW IN WIRE #3	1B1	136131-02-003	1
	265	136134-02-003	1
THROW IN WIRE #4	1B1	136131-02-075	1
	265	136134-02-075	1
THROW IN WIRE #5	1B1	136131-02-056	1
	265	136134-02-056	1

SLIDEOUT WIRE #1	136151-02-014	2
SLIDEOUT WIRE #2	136151-03-028	2
SLIDEOUT WIRE #3	136151-02-028	2 1DF
SLIDEOUT WIRE #4	136151-06-022	2
SLIDEOUT WIRE #5	136151-05-022	2
SLIDEOUT WIRE #6	136151-02-022	2



2 SEE DETAIL BB FOR CONNECTOR INSTALLATION.
1 SEE DETAIL BA FOR CONNECTOR INSTALLATION.

NOTES:

FOR ELECTRICAL TORQUE SPECIFICATIONS SEE DWG NO. 128783-01-000

FOR ELECTRICAL CALLOUTS SEE DWG 000228177 344479-01-000

- 1DF EXT TV ENTERTAINMENT CENTER
- 265 CODES/STANDARDS-CSA/CMVSS
- 1B1 CODES/STANDARDS USA

DESCRIPTION:	1B1 265	
LOAD CENTER/ATS ASM		
SHEET:	ITEM/PART NO.:	REV
2 OF 4	000181272 / 30129101000	

8

7

6

5

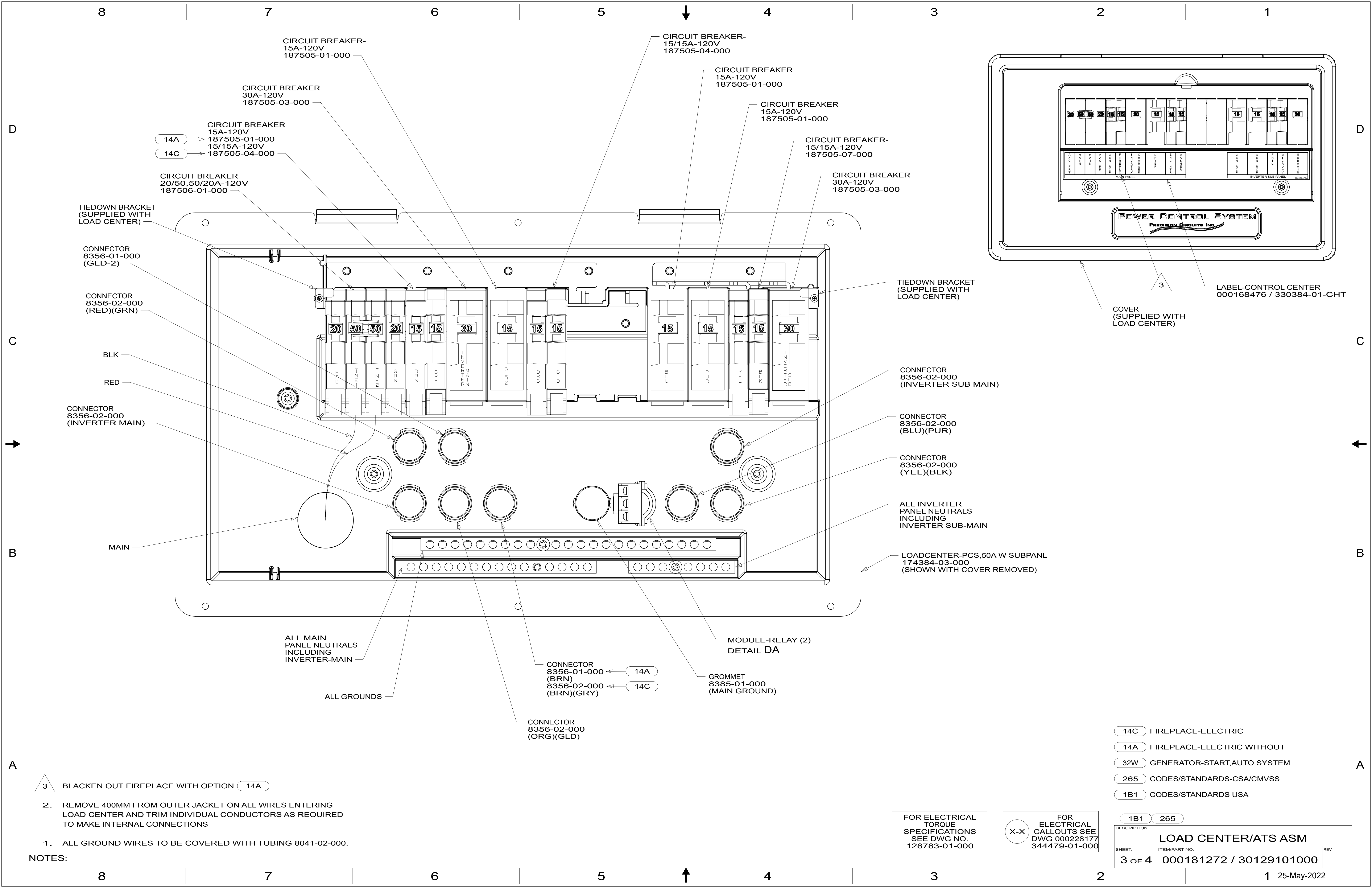
4

3

2

1

25-May-2022



8 7 6 5 4 3 2 1

D

D

C

C

B

B

A

A

8 7 6 5 4 3 2 1 25-May-2022

→

←

→

←

↑

↓

NOTES:

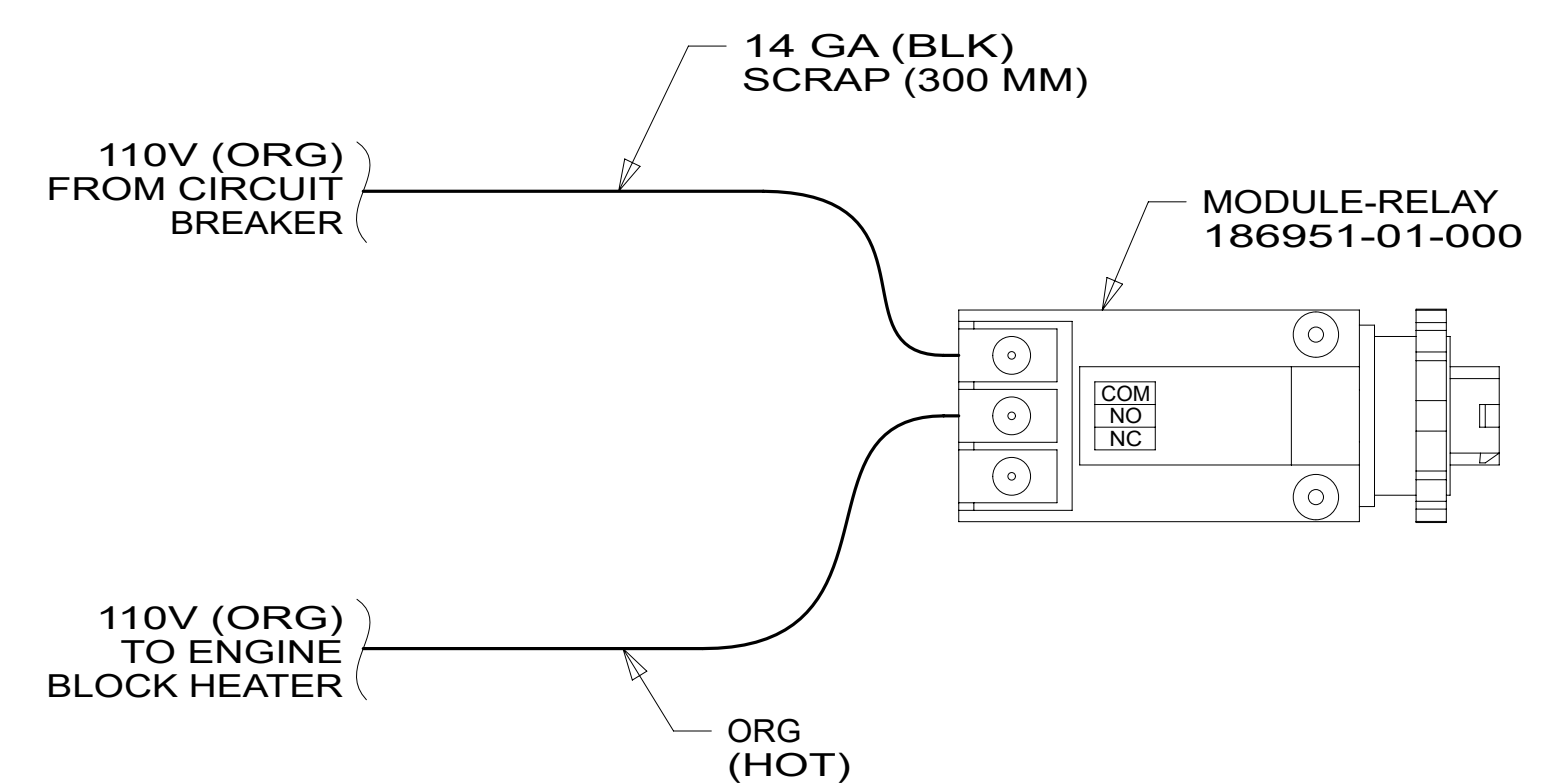
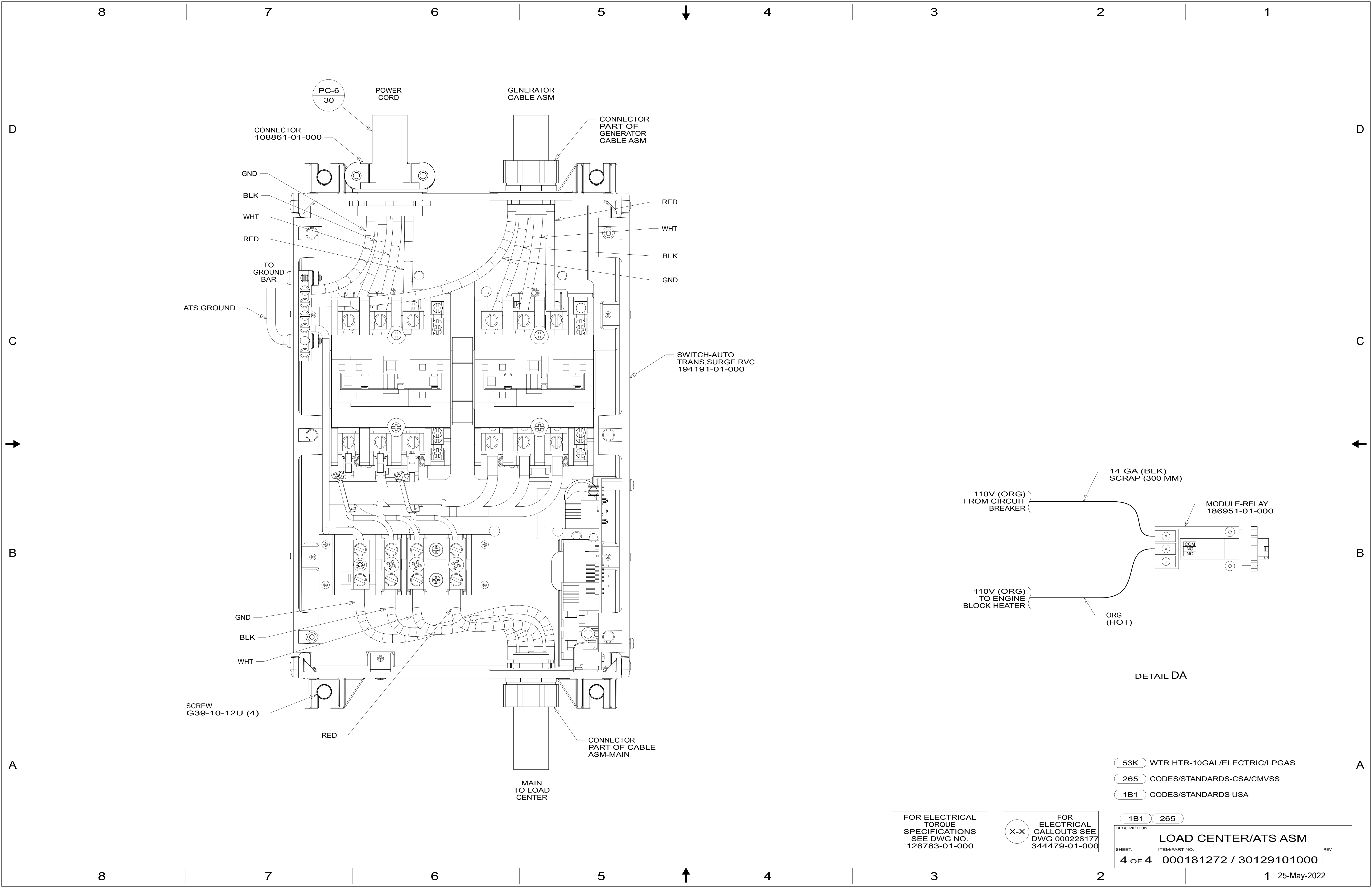
- 1. ALL GROUND WIRES TO BE COVERED WITH TUBING 8041-02-000.
- 2. REMOVE 400MM FROM OUTER JACKET ON ALL WIRES ENTERING LOAD CENTER AND TRIM INDIVIDUAL CONDUCTORS AS REQUIRED TO MAKE INTERNAL CONNECTIONS
- 3. BLACKEN OUT FIREPLACE WITH OPTION 14A

- 14C FIREPLACE-ELECTRIC
- 14A FIREPLACE-ELECTRIC WITHOUT
- 32W GENERATOR-START,AUTO SYSTEM
- 265 CODES/STANDARDS-CSA/CMVSS
- 1B1 CODES/STANDARDS USA

FOR ELECTRICAL TORQUE SPECIFICATIONS SEE DWG NO. 128783-01-000

FOR ELECTRICAL CALLOUTS SEE DWG 000228177 344479-01-000

DESCRIPTION:	1B1 265	
LOAD CENTER/ATS ASM		
SHEET:	ITEM/PART NO:	REV
3 OF 4	000181272 / 30129101000	



DETAIL DA

- 53K WTR HTR-10GAL/ELECTRIC/LPGAS
- 265 CODES/STANDARDS-CSA/CMVSS
- 1B1 CODES/STANDARDS USA

FOR ELECTRICAL TORQUE SPECIFICATIONS SEE DWG NO. 128783-01-000

FOR ELECTRICAL CALLOUTS SEE DWG 000228177 344479-01-000

DESCRIPTION:	1B1 265	
LOAD CENTER/ATS ASM		
SHEET:	ITEM/PART NO.:	REV
4 OF 4	000181272 / 30129101000	