

8

7

6

5

4

3

2

1



D

D

C

C

B

B

A

A

CABLE ASM (YEL) FROM COACH BATTERY FUSE TO COACH SIDE OF AUX START SOLENOID	000284737_03700 / 357069-01-037
CABLE ASM (ORG) FROM COACH BATTERY TO INVERTER FUSE	000284735_00300 / 357068-01-003
CABLE ASM (ORG) FROM INVERTER FUSE TO INVERTER DISCONNECT	000284735_01200 / 357068-01-012
CABLE ASM (ORG) FROM INVERTER DISCONNECT TO INVERTER POSITIVE TERMINAL	000284735_00500 / 357068-01-005
CABLE ASM (BLK) FROM BATTERY TO INVERTER NEGATIVE TERMINAL	000284715_01800 / 357067-01-018
CABLE ASM (BLK) FROM COACH BATTERY TO FRAME RAIL GROUND	000284714_03000 / 357066-01-030
CABLE ASM (BLU) FROM CHASSIS ISOLATED STUD TO LEVELING SYSTEM PUMP	141416-26-115
CABLE ASM (BLK) FROM LEVELING SYSTEM TO FRAME RAIL GROUND	133567-11-005
CABLE ASM (GRN) FROM COACH BAT DISC RELAY FUSE TO PASS THRU STUD IN FRONT LEFT COMPT	000288411_12200 / 357507-01-122
CABLE ASM (GRN) FROM PASS THRU STUD IN FRONT LEFT COMPT TO GENERATOR	000288411_02400 / 357507-01-024
CABLE ASM (BLK) FROM GENERATOR TO FRAME RAIL GROUND BOLT	000284714_01300 / 357066-01-013
CABLE ASM (YEL) JUMPER BETWEEN POSITIVE POSTS ON COACH BATTERY	000284708_00200 / 357062-01-002 (3)
CABLE ASM (BLK) JUMPER BETWEEN NEGATIVE POSTS ON COACH BATTERY	000284631_00200 / 357056-01-002 (3)
CABLE ASM (RED) JUMPER BETWEEN POSITIVE POSTS IN LEFT FRONT COMPT	000284709_00200 / 357063-01-002
CABLE ASM-TEMPERATURE,BATTERY	175385-03-000
CABLE ASM (RED) FROM CHASSIS BATTERY FUSE TO CHASSIS SIDE OF AUX START SOLENOID	000284748_00900 / 357077-01-009
CABLE ASM (RED) FROM CHASSIS BATTERY TO CHASSIS BATTERY FUSE	000284748_00500 / 357077-01-005
CABLE ASM (YEL) FROM COACH BATTERY TO COACH BATTERY FUSE	000284737_00300 / 357069-01-003

265 CODES/STANDARDS-CSA/CMVSS

1B1 CODES/STANDARDS USA

1B1 265



COPYRIGHT 2024 WINNEBAGO INDUSTRIES, INC.

	INDICATES A CRITICAL CHARACTERISTIC. ENSURE PROPER PROCEDURES ARE FOLLOWED.
	INDICATES A SIGNIFICANT CHARACTERISTIC. ENSURE PROPER PROCEDURES ARE FOLLOWED.
	INDICATES A KEY CHARACTERISTIC. ENSURE PROPER PROCEDURES ARE FOLLOWED.

FOR ELECTRICAL TORQUE SPECIFICATIONS SEE DWG NO. 128783-01-000

FOR ELECTRICAL CALLOUTS SEE DWG 000228177 344479-01-000

DSNR:		ALL DIMENSIONS ARE IN MILLIMETERS		
DFFR:				
UNSPECIFIED TOLERANCES:		MATERIAL:		
WHOLE DIM (X)	: 3			
ONE-PLACE (X.X)	: 1.5			
TWO-PLACE (X.XX)	: 0.50			
ANGLE	: 1°			
REFER TO ES0018 FOR FASTENER TIGHTENING GUIDELINES	WEIGHT: (LBS)	FIRST USED:		
		17 L38W		
DESCRIPTION:				
BATTERY INSTL				
SHEET:	ITEM/PART NO.:	REF:		REV
1 OF 4	000180353 / 30129001000	1		28-Feb-2024

8

7

6

5

4

3

2

1

1 28-Feb-2024

8 7 6 5 4 3 2 1

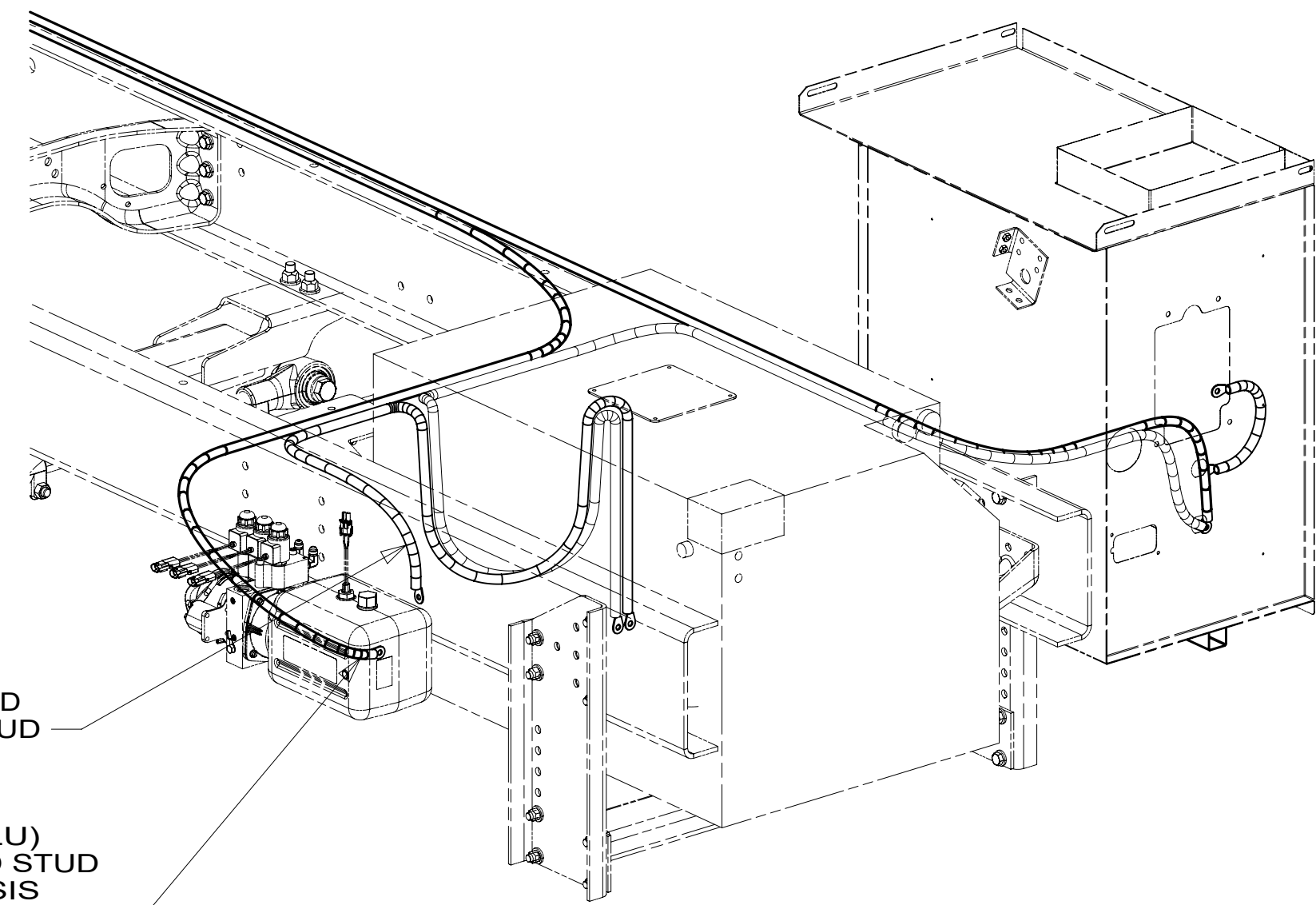
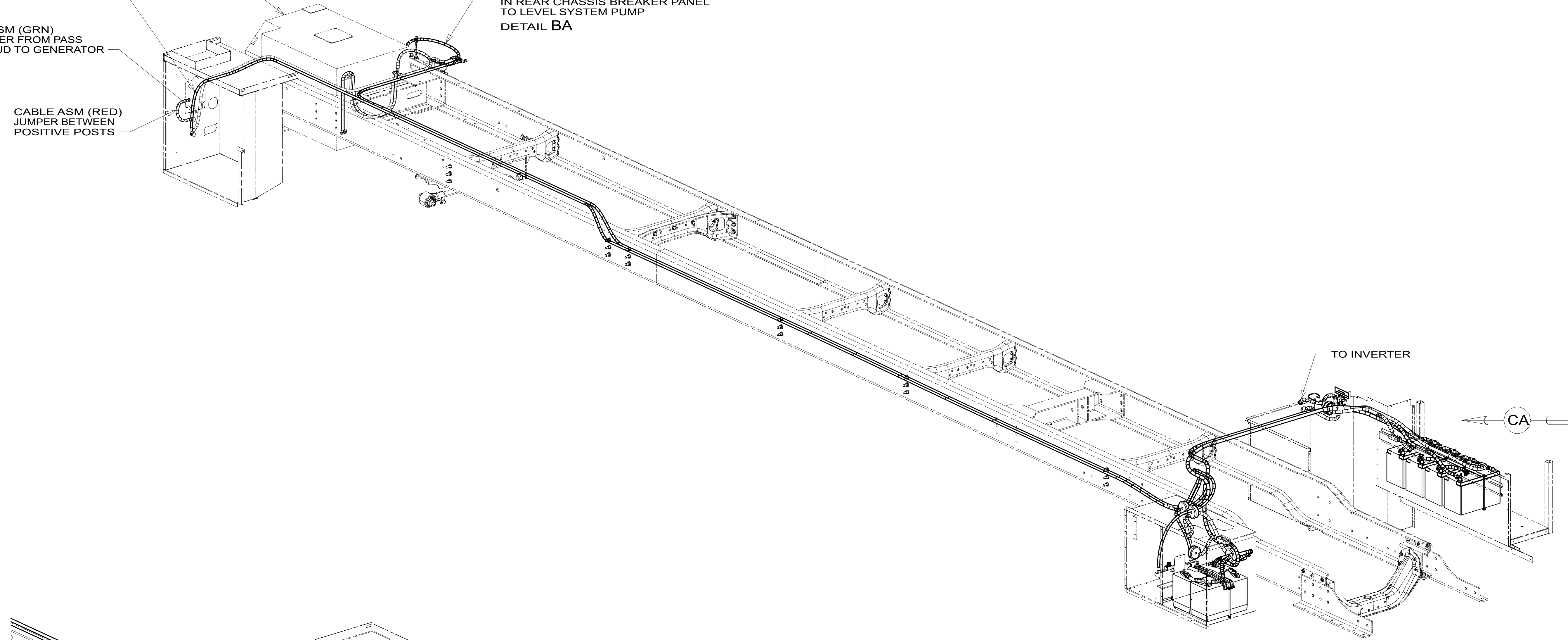
CABLE ASM (GRN)  
FROM COACH BAT DISC  
RELAY TO PASS THRU STUD

GENERATOR  
(REF)

CABLE ASM (BLU)  
FROM ISOLATED STUD  
IN REAR CHASSIS BREAKER PANEL  
TO LEVEL SYSTEM PUMP  
DETAIL BA

CABLE ASM (GRN)  
GENERATOR FROM PASS  
THRU STUD TO GENERATOR

CABLE ASM (RED)  
JUMPER BETWEEN  
POSITIVE POSTS



CABLE ASM (BLK)  
GENERATOR GROUND  
FROM GENERATOR GROUND STUD  
TO LEVEL SYSTEM GROUND STUD

CABLE ASM (BLU)  
FROM ISOLATED STUD  
IN REAR CHASSIS  
BREAKER PANEL TO  
LEVEL SYSTEM PUMP

DETAIL BA

265 CODES/STANDARDS-CSA/CMVSS

1B1 CODES/STANDARDS USA

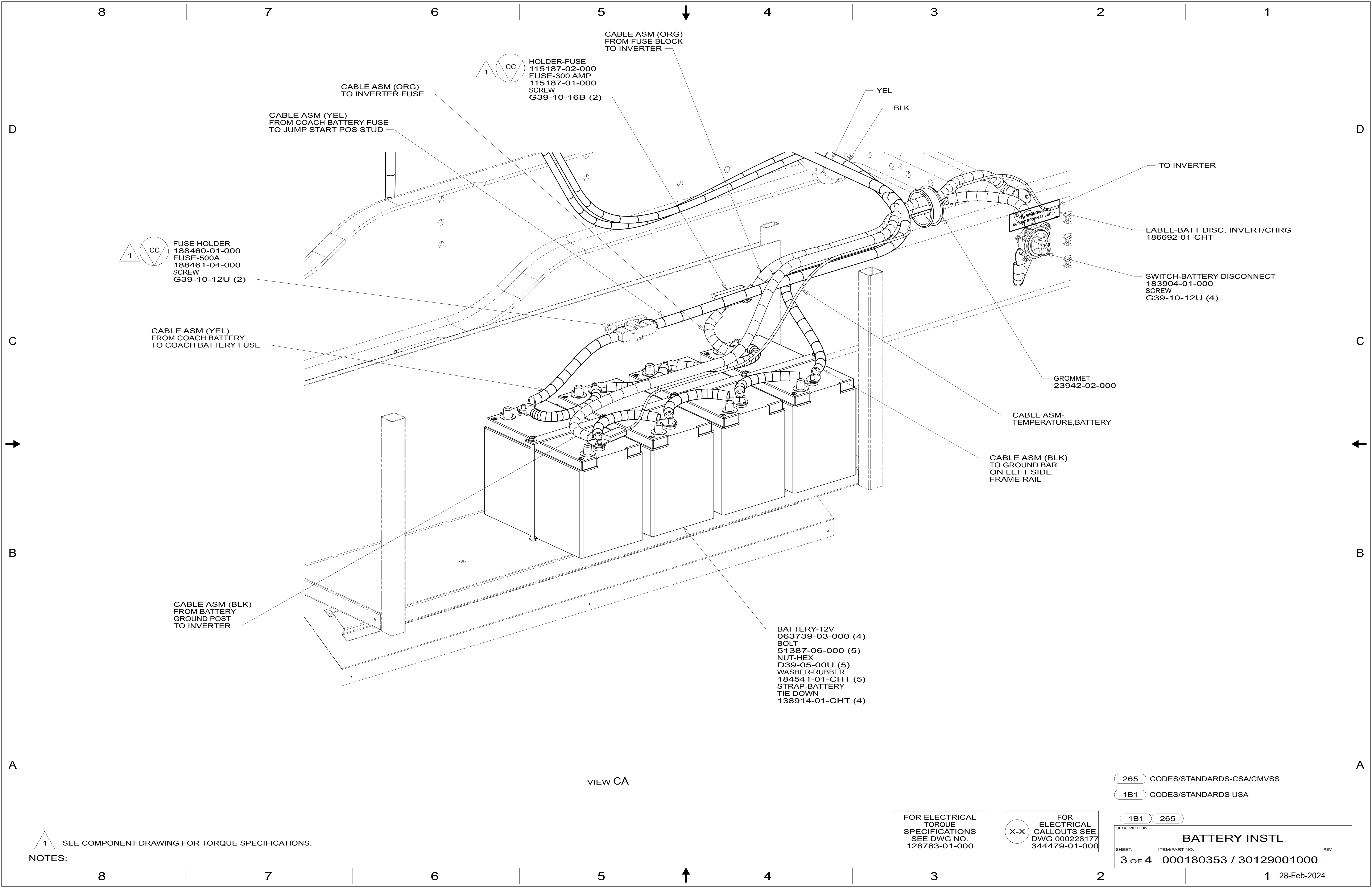
1B1 265

FOR ELECTRICAL  
TORQUE  
SPECIFICATIONS  
SEE DWG NO.  
128783-01-000

FOR  
ELECTRICAL  
CALLOUTS SEE  
DWG 000228177  
344479-01-000

DESCRIPTION: <b>BATTERY INSTL</b>		
SHEET: 2 OF 4	ITEM/PART NO: 000180353 / 30129001000	REV

8 7 6 5 4 3 2 1 28-Feb-2024



VIEW CA

265 CODES/STANDARDS-CSA/CMVSS

1B1 CODES/STANDARDS USA

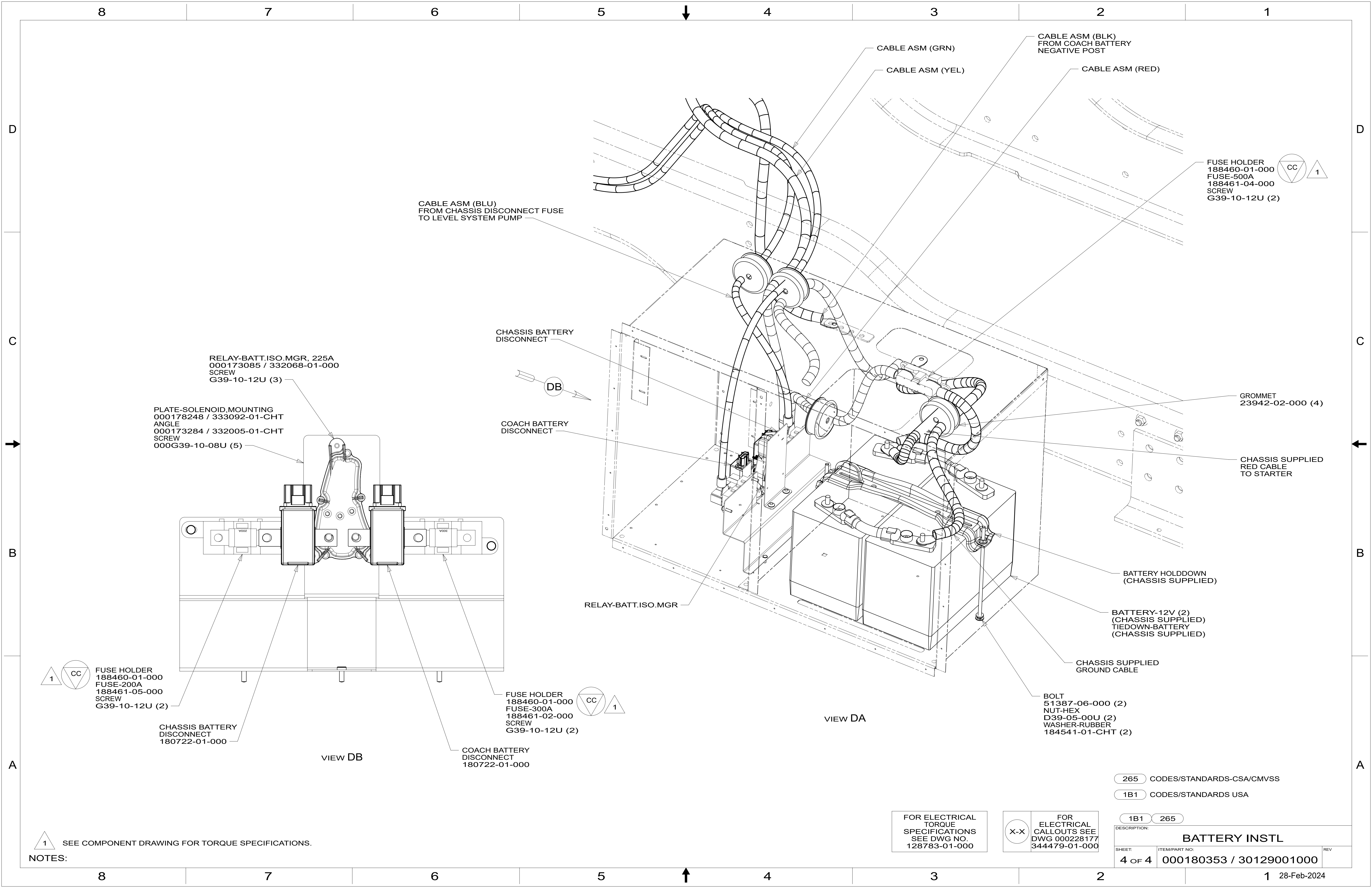
1B1 265

FOR ELECTRICAL TORQUE SPECIFICATIONS SEE DWG NO. 128783-01-000

FOR ELECTRICAL CALLOUTS SEE DWG 000228177 344479-01-000

DESCRIPTION: <b>BATTERY INSTL</b>		
SHEET: <b>3 OF 4</b>	ITEM/PART NO.: <b>000180353 / 30129001000</b>	REV

NOTES:  
1 SEE COMPONENT DRAWING FOR TORQUE SPECIFICATIONS.



CABLE ASM (BLU)  
FROM CHASSIS DISCONNECT FUSE  
TO LEVEL SYSTEM PUMP

CABLE ASM (GRN)

CABLE ASM (YEL)

CABLE ASM (BLK)  
FROM COACH BATTERY  
NEGATIVE POST

CABLE ASM (RED)

FUSE HOLDER  
188460-01-000  
FUSE-500A  
188461-04-000  
SCREW  
G39-10-12U (2)

RELAY-BATT.ISO.MGR. 225A  
000173085 / 332068-01-000  
SCREW  
G39-10-12U (3)

PLATE-SOLENOID.MOUNTING  
000178248 / 333092-01-CHT  
ANGLE  
000173284 / 332005-01-CHT  
SCREW  
000G39-10-08U (5)

CHASSIS BATTERY  
DISCONNECT

DB

COACH BATTERY  
DISCONNECT

GROMMET  
23942-02-000 (4)

CHASSIS SUPPLIED  
RED CABLE  
TO STARTER

BATTERY HOLDDOWN  
(CHASSIS SUPPLIED)

BATTERY-12V (2)  
(CHASSIS SUPPLIED)  
TIEDOWN-BATTERY  
(CHASSIS SUPPLIED)

CHASSIS SUPPLIED  
GROUND CABLE

BOLT  
51387-06-000 (2)  
NUT-HEX  
D39-05-00U (2)  
WASHER-RUBBER  
184541-01-CHT (2)

RELAY-BATT.ISO.MGR

VIEW DA

VIEW DB

FUSE HOLDER  
188460-01-000  
FUSE-300A  
188461-02-000  
SCREW  
G39-10-12U (2)

COACH BATTERY  
DISCONNECT  
180722-01-000

FUSE HOLDER  
188460-01-000  
FUSE-200A  
188461-05-000  
SCREW  
G39-10-12U (2)

CHASSIS BATTERY  
DISCONNECT  
180722-01-000

265 CODES/STANDARDS-CSA/CMVSS

1B1 CODES/STANDARDS USA

1B1 265

FOR ELECTRICAL  
TORQUE  
SPECIFICATIONS  
SEE DWG NO.  
128783-01-000

FOR ELECTRICAL  
CALLOUTS SEE  
DWG 000228177  
344479-01-000

DESCRIPTION: <b>BATTERY INSTL</b>		
SHEET: <b>4 OF 4</b>	ITEM/PART NO.: <b>000180353 / 30129001000</b>	REV:
		1 28-Feb-2024

NOTES:  
1 SEE COMPONENT DRAWING FOR TORQUE SPECIFICATIONS.