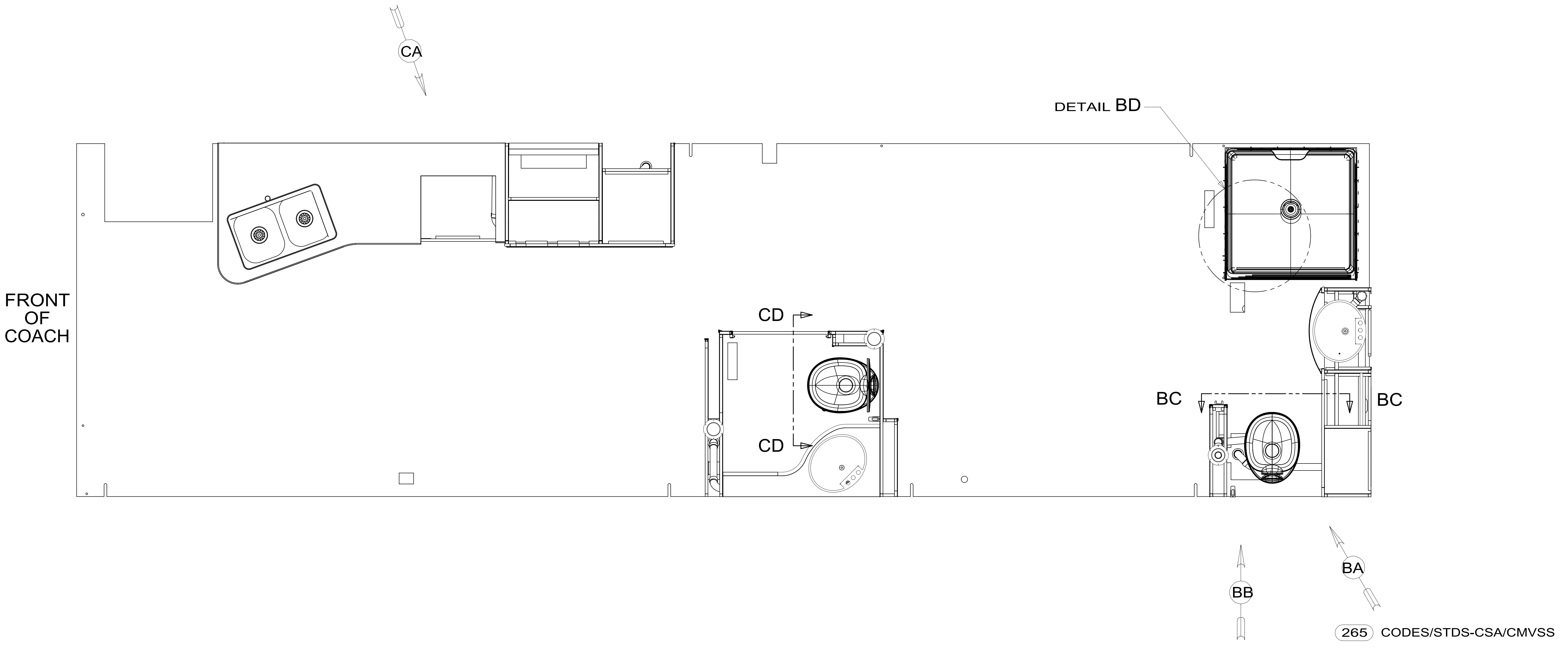


8 7 6 5 4 3 2 1

D  
C  
B  
A

D  
C  
B  
A



- 9. SEE DRAWING 061607 FOR INSTALLATION OF GROMMETS.
- 8. SECURE DRAINAGE PIPES TO CABINET USING WIRE TIE 108046-02-000, AND SCREW 000G67-10-12U AT INTERVALS OF NOT OF NOT MORE THAN 4 FEET APART.
- 7. SECURE VENT PIPE TO TANK WITH CLAMP 062401-02-000.
- 6. VENT PIPE MUST PROJECT 51 MIN AND 64 MAX ABOVE ROOF FOR PROPER FIT AND FUNCTION. ADD S-1 (116666-01-CHT SEAL-VENT PIPE) AROUND PIPE ON ROOF BEFORE VENT CAP IS INSTALLED.
- 5. SEAL AROUND SHOWER WITH SILICONE.
- 4. USE SMOOTH PLUMBERS PUTTY 167459-01-000 TO SEAL STRAINER (0.2 PER STRAINER).
- 3. ALL PIPE AND FITTINGS TO BE ASSEMBLED WITH SOLVENT 004020-01-000 (USA), 004020-02-000 (CAN)
- 2. SLOPE OF TRAP ARM MUST BE 6 PER 305 mm.
- 1. SLOPE OF HORIZONTAL PIPING TO BE MINIMUM OF 3 PER 305 mm.

NOTES:

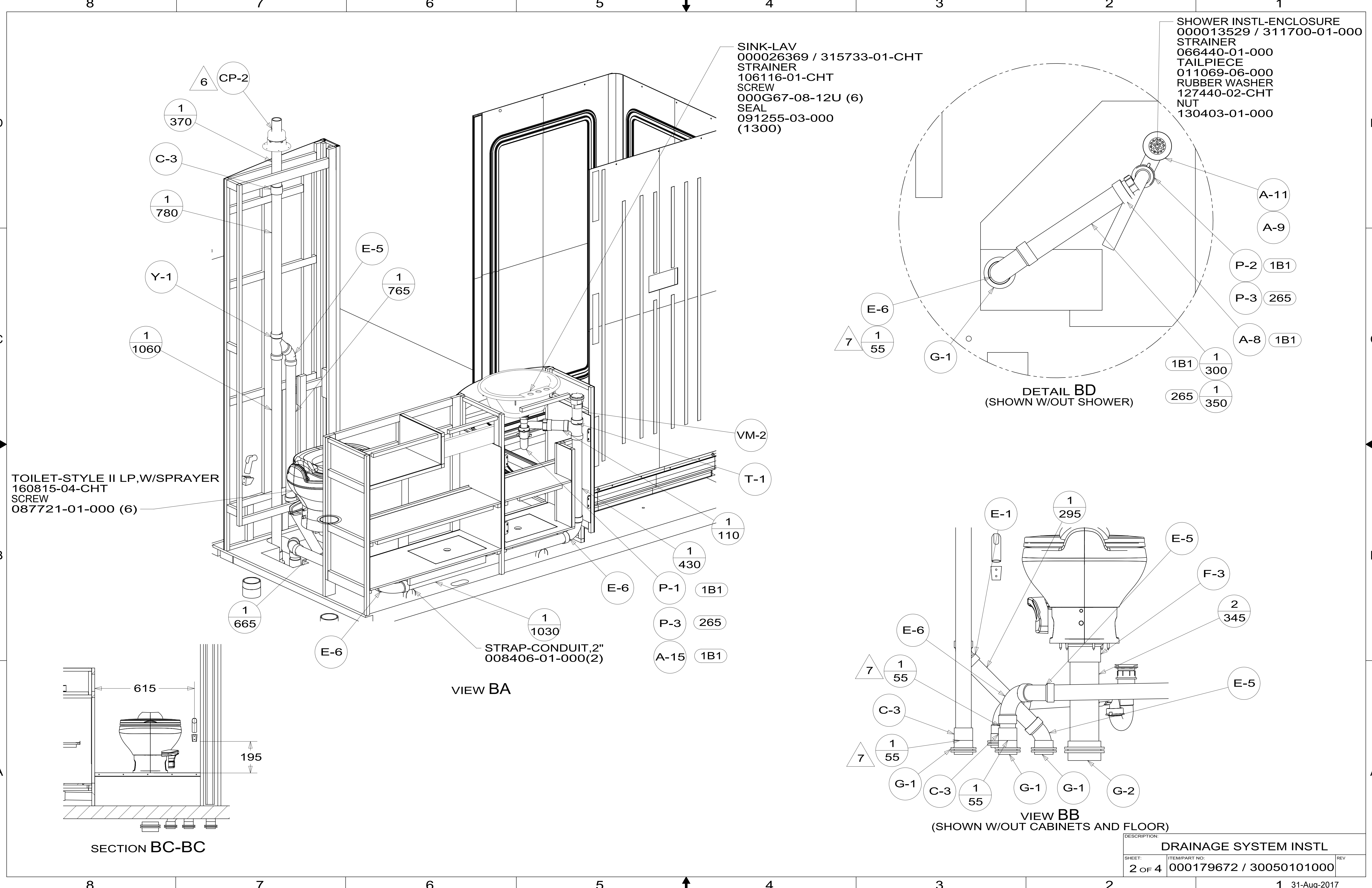
265 CODES/STDS-CSA/CMVSS  
1B1 CODES/STANDARDS-USA

X-X  
FOR DRAINAGE CALLOUTS SEE DWG NO. 000211962 / 303370-01-000

**WINNEBAGO**  
COPYRIGHT 2017 WINNEBAGO INDUSTRIES, INC.

DSNR:		ALL DIMENSIONS ARE IN MILLIMETERS	
DIFTR:		MATERIAL:	
UNSPECIFIED TOLERANCES:			
WHOLE DIM (X)	3		
ONE-PLACE (X.X)	1.5		
TWO-PLACE (X.XX)	0.50		
ANGLE	1°		
REFER TO ES0018 FOR FASTENER TIGHTENING GUIDELINES		WEIGHT: (LBS)	FIRST USED: (REF)
			16 E35B
DESCRIPTION: <b>DRAINAGE SYSTEM INSTL</b>			
SHEET:	ITEM/PART NO.:	REV	
1 OF 4	000179672 / 30050101000		

8 7 6 5 4 3 2 1 REF: 1 31-Aug-2017



8  
7  
6  
5  
4  
3  
2  
1

D  
C  
B  
A

8  
7  
6  
5  
4  
3  
2  
1

CP-2

1  
370

C-3

1  
780

Y-1

1  
1060

E-5

1  
765

VM-2

T-1

1  
110

1  
430

P-1 1B1

P-3 265

A-15 1B1

1  
665

E-6

1  
1030

STRAP-CONDUIT,2"  
008406-01-000(2)

E-6

1  
55

7

C-3

1  
55

7

G-1

C-3

1  
55

G-1

G-1

G-2

E-1

1  
295

E-5

F-3

2  
345

E-5

A-11

A-9

P-2 1B1

P-3 265

A-8 1B1

1B1 1  
300

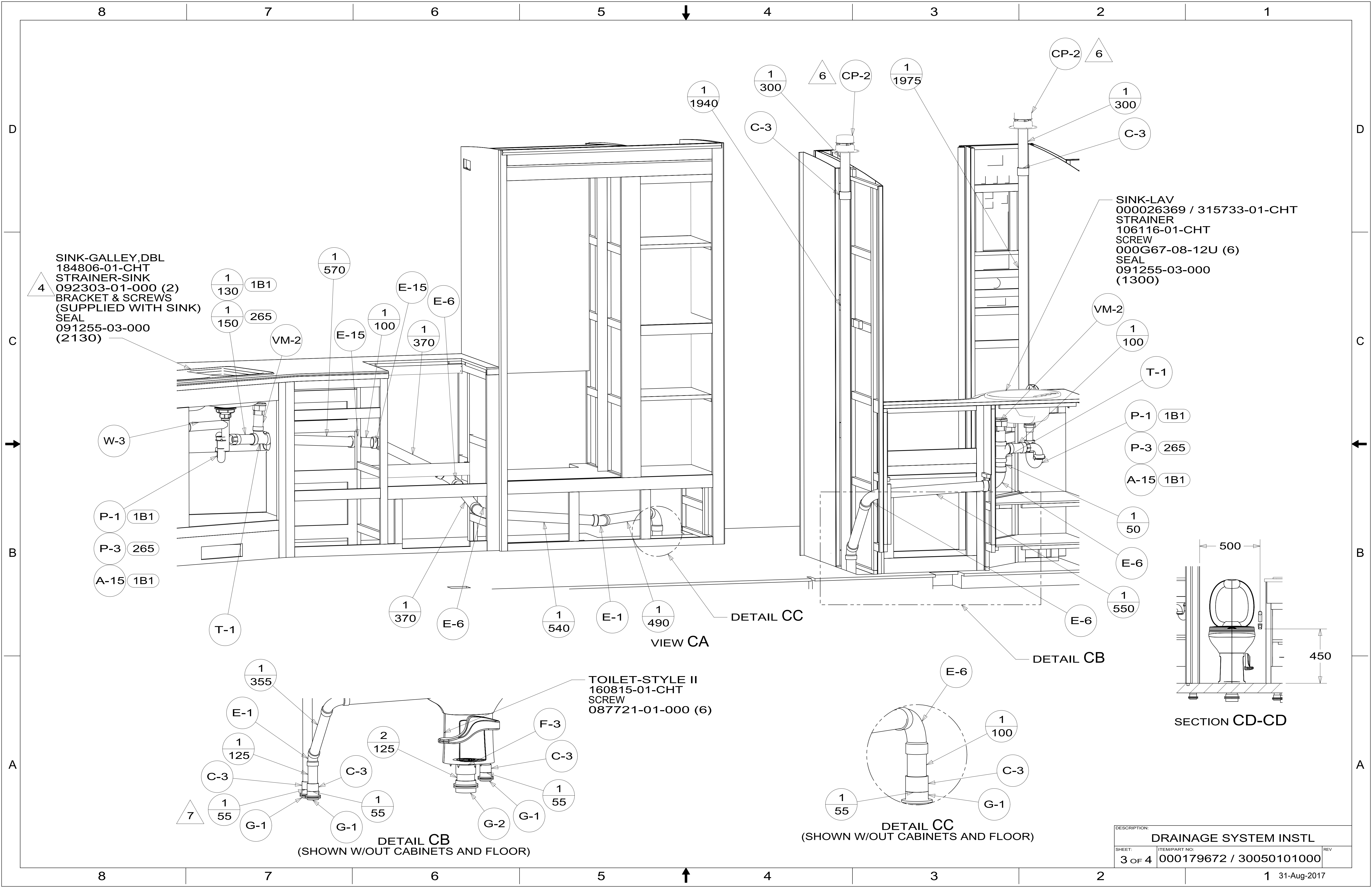
265 1  
350

DETAIL BD  
(SHOWN W/OUT SHOWER)

SECTION BC-BC

D  
C  
B  
A

8  
7  
6  
5  
4  
3  
2  
1



SINK-GALLEY, DBL  
 184806-01-CHT  
 STRAINER-SINK  
 092303-01-000 (2)  
 BRACKET & SCREWS  
 (SUPPLIED WITH SINK)  
 SEAL  
 091255-03-000  
 (2130)

SINK-LAV  
 00026369 / 315733-01-CHT  
 STRAINER  
 106116-01-CHT  
 SCREW  
 000G67-08-12U (6)  
 SEAL  
 091255-03-000  
 (1300)

TOILET-STYLE II  
 160815-01-CHT  
 SCREW  
 087721-01-000 (6)

DESCRIPTION: DRAINAGE SYSTEM INSTL		
SHEET: 3 OF 4	ITEM/PART NO: 000179672 / 30050101000	REV
		1 31-Aug-2017

4

1  
130 1B1  
1  
150 265

1  
570

E-15

1  
100

1  
370

E-6

1  
1940

1  
300

6

CP-2

1  
1975

CP-2

6

1  
300

C-3

VM-2

E-15

1  
100

1  
370

E-6

W-3

P-1 1B1

P-3 265

A-15 1B1

T-1

1  
370

E-6

1  
540

E-1

1  
490

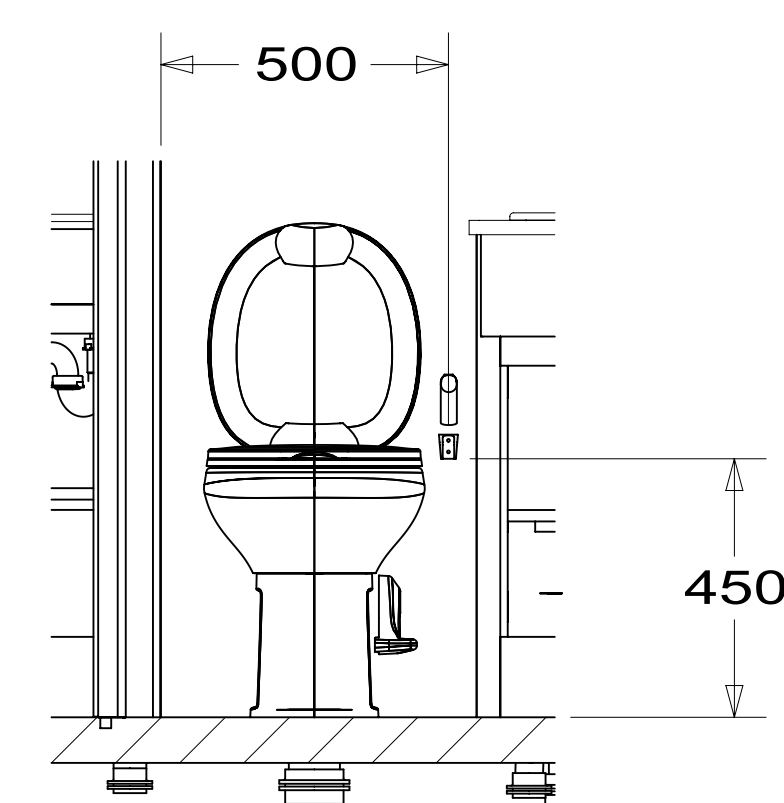
DETAIL CC

VIEW CA

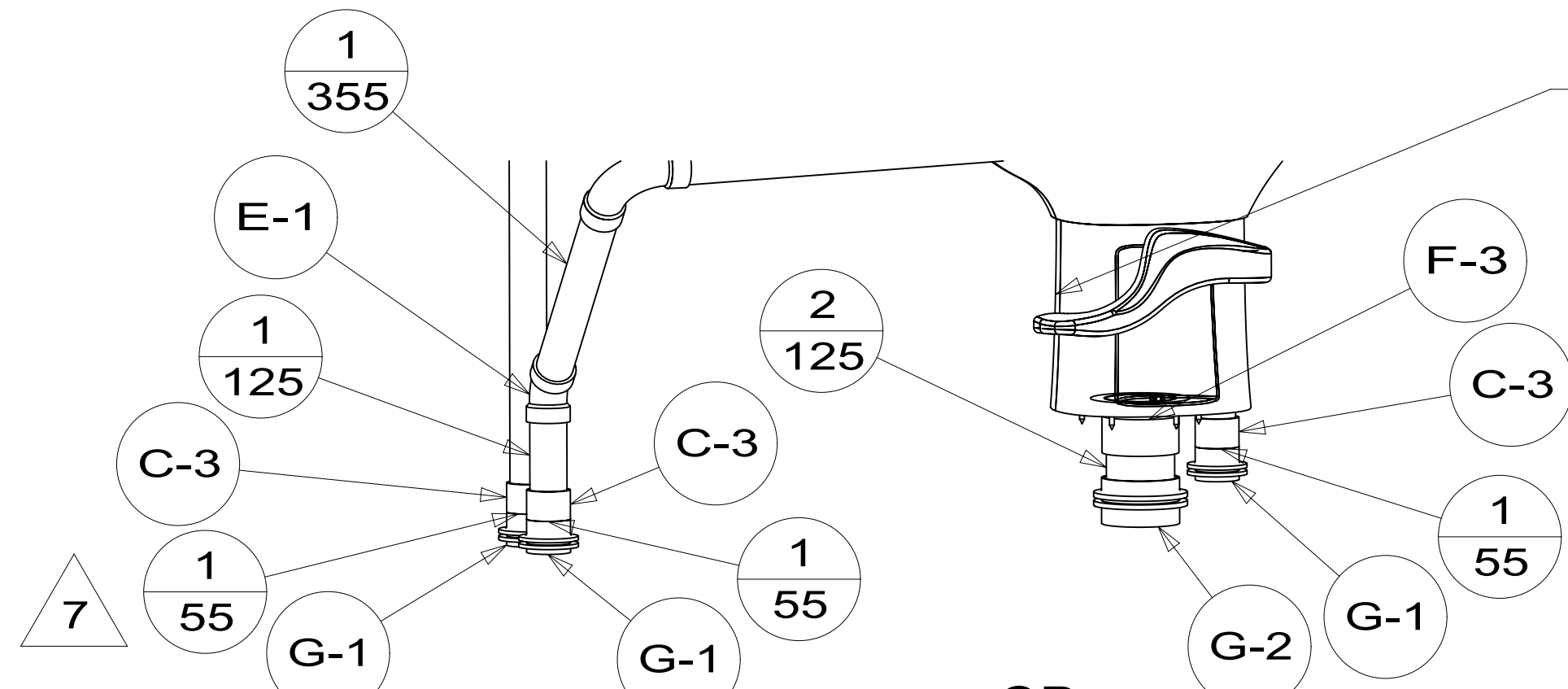
E-6

1  
550

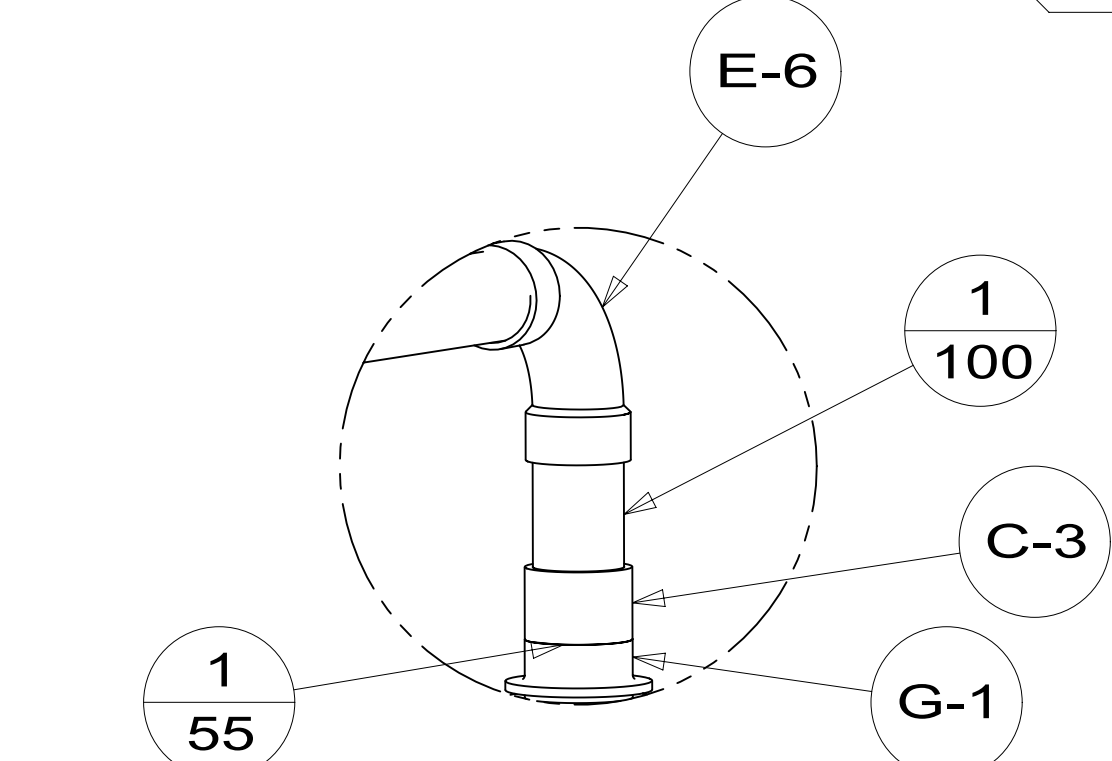
DETAIL CB



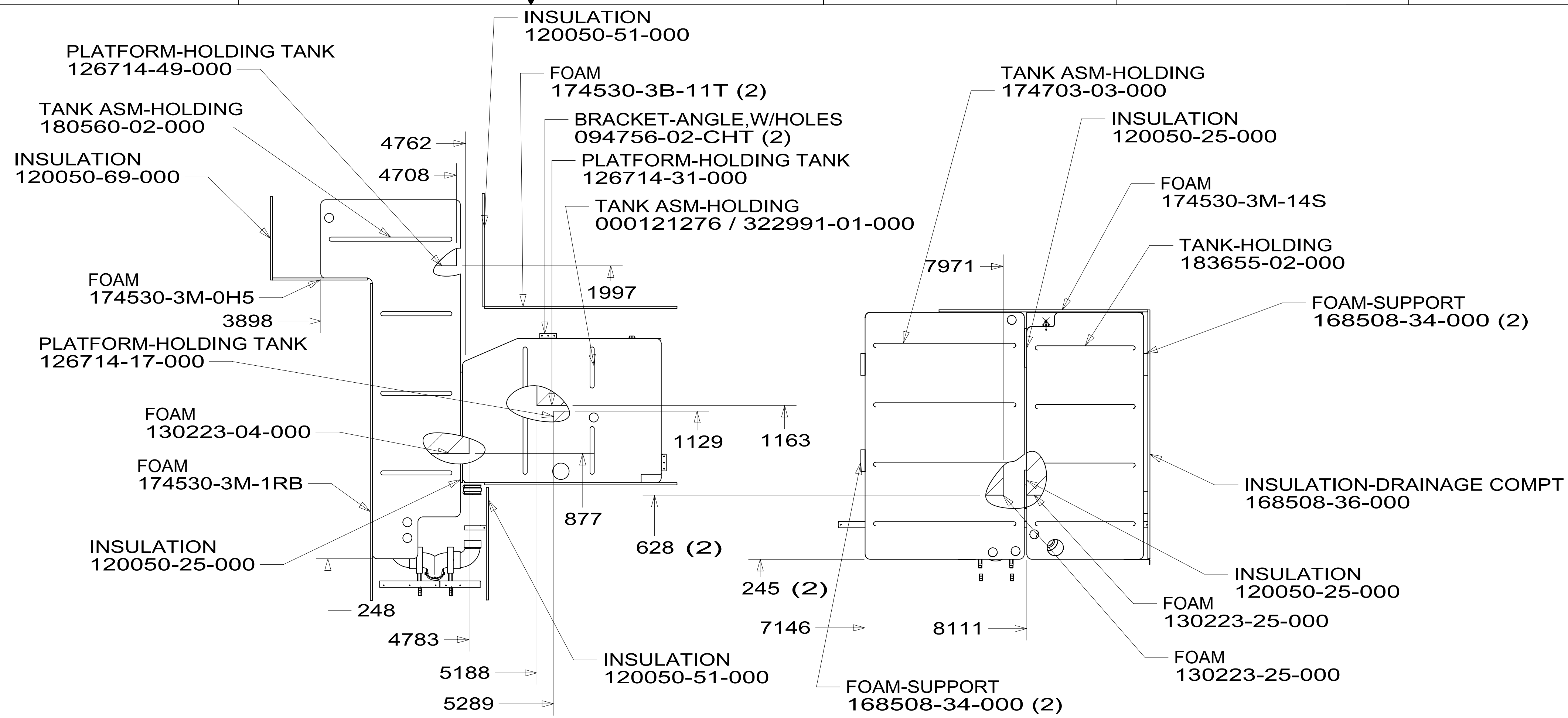
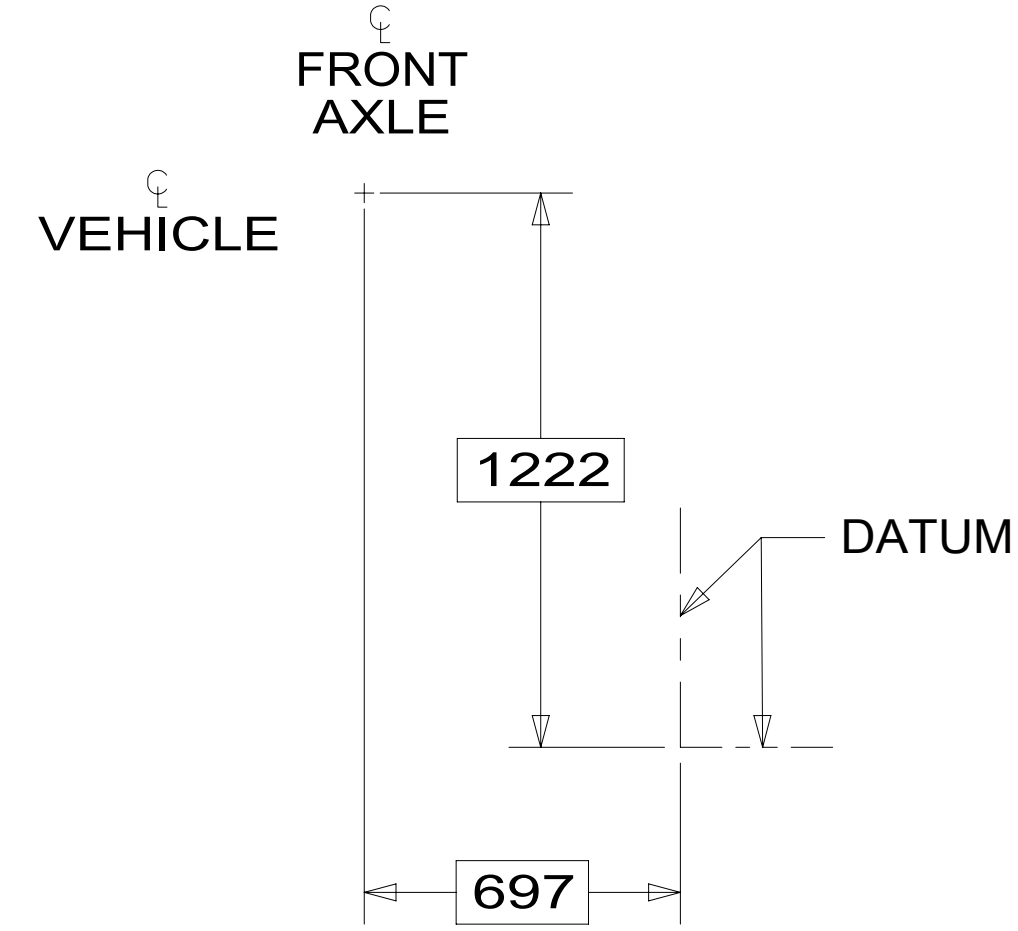
SECTION CD-CD



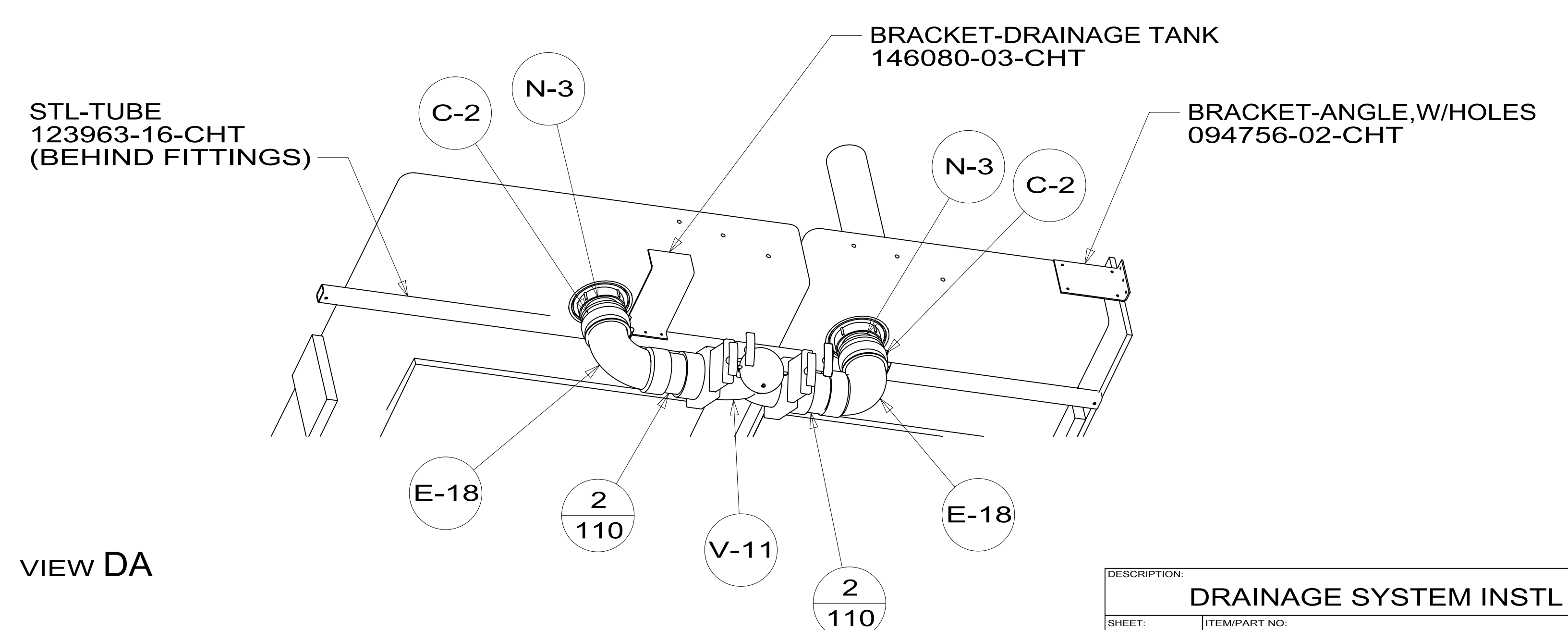
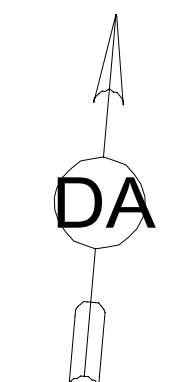
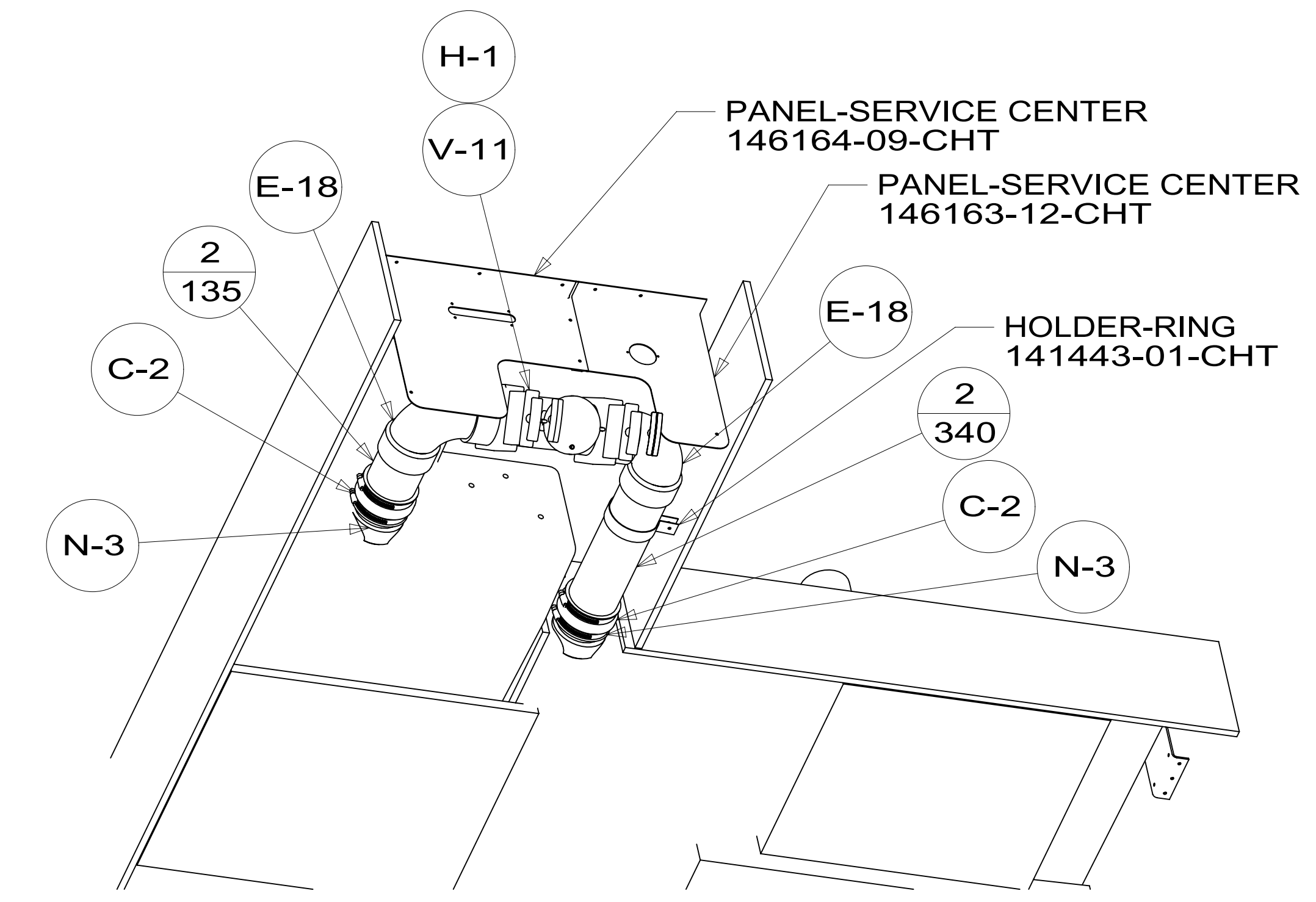
DETAIL CB  
 (SHOWN W/OUT CABINETS AND FLOOR)



DETAIL CC  
 (SHOWN W/OUT CABINETS AND FLOOR)



**TOP VIEW SHOWING TANKS AND DRAINS**



VIEW DA

DESCRIPTION:		
DRAINAGE SYSTEM INSTL		
SHEET:	ITEM/PART NO:	REV
4 OF 4	000179672 / 30050101000	