

SWITCH-WATER PUMP
108357-21-000
ACTUATOR
108356-23-CHT
WIRE ASM-EXTENSION
000024236 / 31493001000

VIEW AA

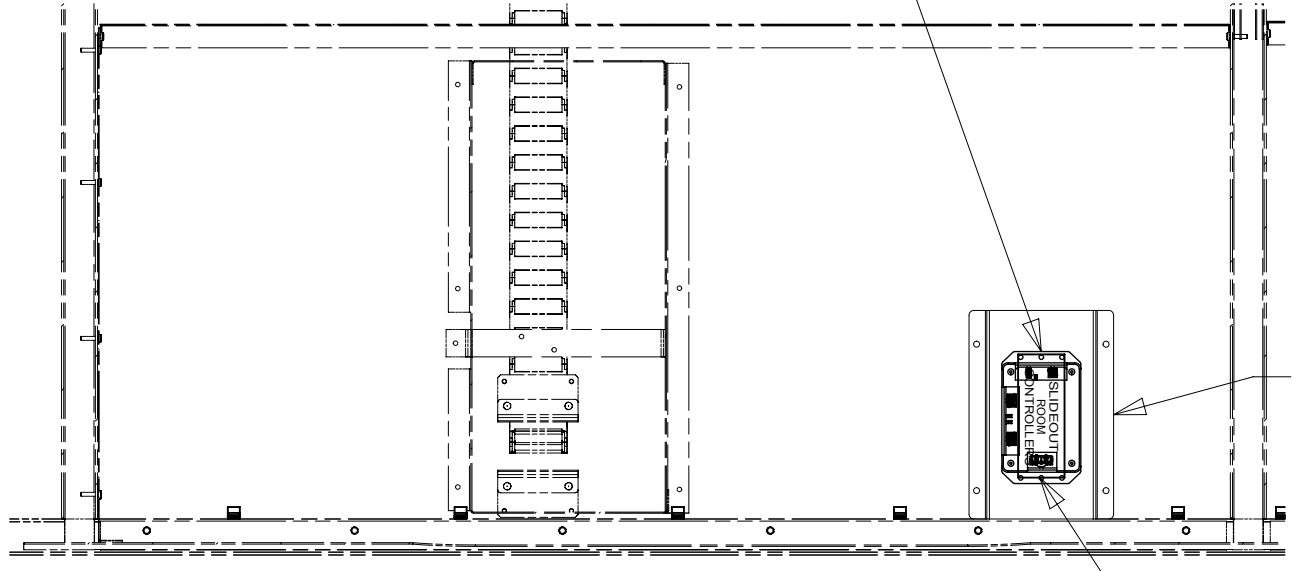
PANEL-SWITCH
000215380 / 303681-01-CHT
SWITCH-ROCKER
108357-06-000 (2)
ACTUATOR-SWITCH
108356-01-CHT (2)
LABEL-STABILIZER
000007799 / 310651-01-CHT

PORT-SOLAR_SINGLE
191558-01-000
SCREW
G39-10-12U (4)

PANEL-SERVICE
132862-04-CHT
PANEL-SERVICE
132862-16-CHT

PLATE-COAX
149557-03-CHT
SCREW
G39-08-08U (2)

CONTROL-SLIDEOUT
189400-01-000
SCREW
G39-08-12U (4)
DETAIL AC



VIEW AB

COVER-ELECTRICAL
194965-01-CHT

LABEL-SLIDEOUT CTL
098379-09-000

23R OR 23T WIRE ASM-HEATER,TANKS
134551-15-000

23R OR 23T WIRE ASM-TANK HEATER
TO TANK HEATER PAD

WIRE ASM-MAIN
HOLDING TANK
151317-05-000

WIRE ASM-AUX
HOLDING TANK
151316-04-000

23R OR 23T WIRE ASM-TANK HEATER
TO TANK HEATER PADS

SLIDEOUT WIRE WITH
YELLOW TAPE PASS
THROUGH FLOOR
IN THIS AREA

CLAMP
010495-02-000 (10)
SCREW
000G39-06-12U (10)

WIRE ASM-
SLIDEOUT
MOTORS
(REF)

WIRE ASM-CHASSIS
TO WIRE ASM SIDEWALL

SLIDEOUT WIRE WITH
GREEN TAPE PASS
THROUGH FLOOR
IN THIS AREA

2 PIN HSG
(CIRCUITS: LLL,LLK)

4 PIN HSG
(CIRCUITS: ABY,ABZ,DR,DU)

2 PIN HSG
(CIRCUIT: DDJ)

6 PIN HSG
WITH GREEN TAPE

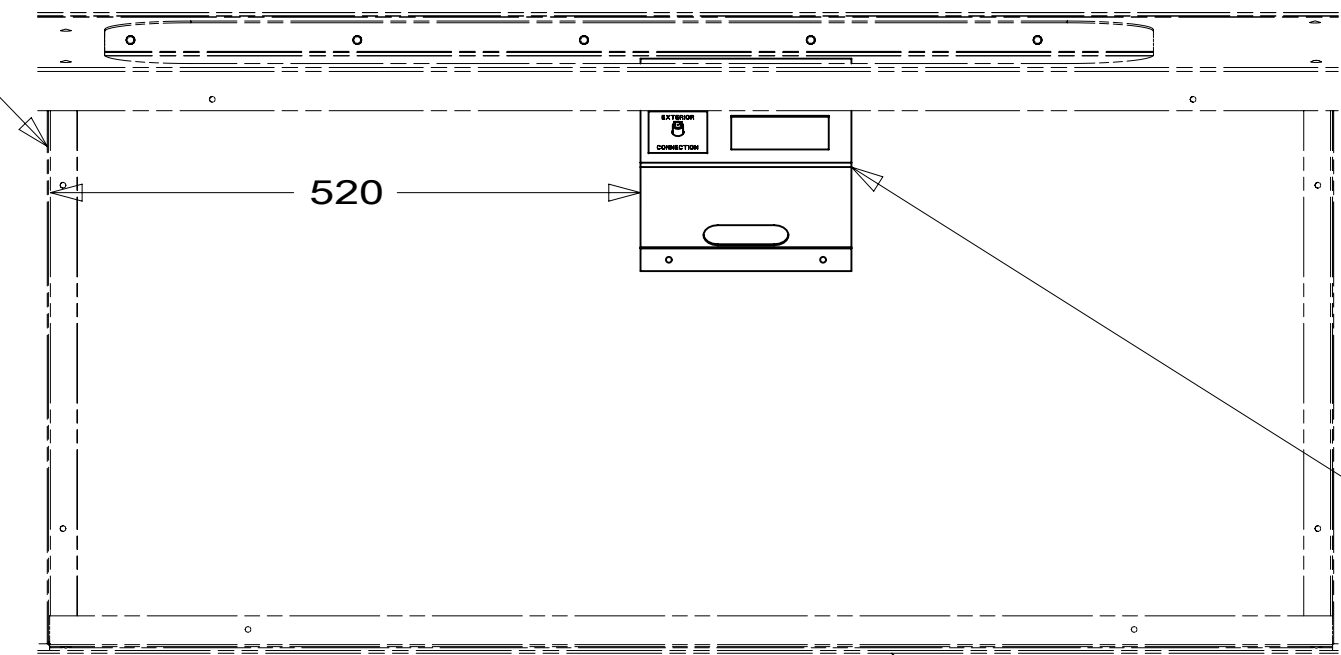
6 PIN HSG
WITH YELLOW TAPE

VIEW AC

PANEL-RCP
151376-02-CHT
ADAPTOR
82134-01-000
NUT
82136-01-000
LABEL
157486-01-CHT
SCREW
G67-10-12U (4)

VIEW AD

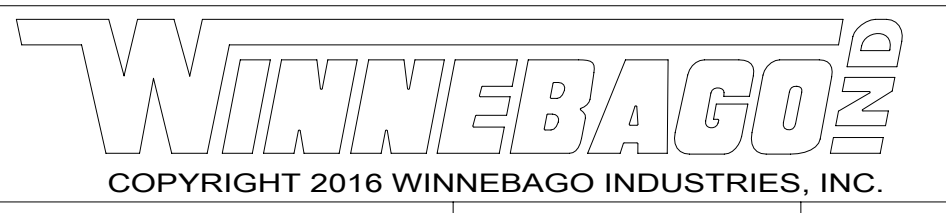
REAR SIDE
OF COMPARTMENT



COMPARTMENT
(REF)

- 64A JACKS-STABILIZING, ELECTRIC
- 282 SOLAR PANEL - 100 WATT
- 29W SOLAR PANEL/BATTERY CHRG W/O
- 3AA SOLAR PANEL/BATT CHARGER SYS
- 23R DRAINAGE SYSTEM/HEAT-PREWIRE
- 23T DRAINAGE SYSTEM-HEATED
- 265 CODES/STANDARDS-CSA/CMVSS
- 1B1 CODES/STANDARDS USA

1B1 265



DSNR:	ALL DIMENSIONS ARE IN MILLIMETERS	MATERIAL:
DFFR:		
UNSPECIFIED TOLERANCES:		
WHOLE DIM (X)	3	
ONE-PLACE (X.X)	1.5	
TWO-PLACE (X.XX)	0.50	
ANGLE	1°	

REFER TO ES0018 FOR FASTENER
TIGHTENING GUIDELINES

WEIGHT: (LBS) FIRST USED:
17 524G

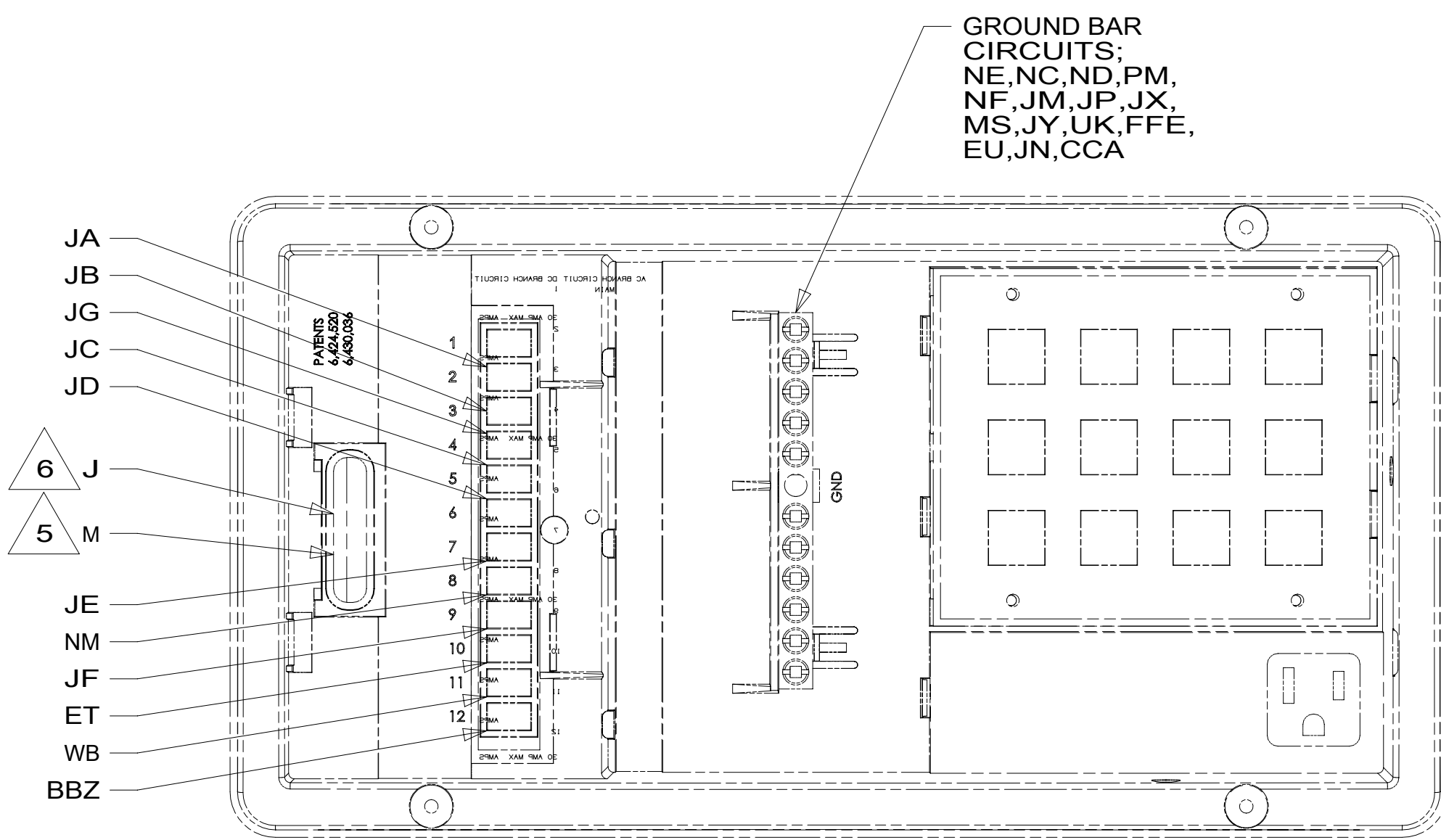
WIRING INSTL-BODY, 12V

SHEET: 1 OF 8 ITEM/PART NO: 000178019 / 30230901000 REF: 1

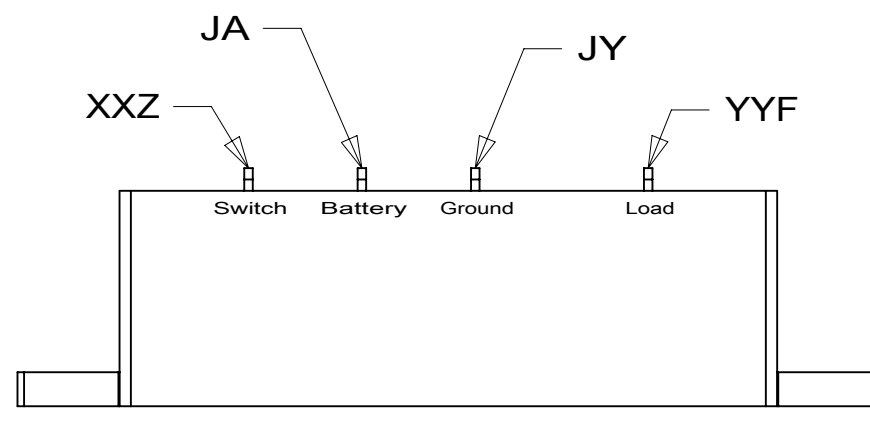
- NOTES:
- 7 FROM WIRE ASM-CHASSIS.
 - 6 SPLICE YELLOW TO RED AND WHITE TO BLACK.
 - 5 SECURE WIRE ASM TO HOLDING TANK CRADLE ASM.
 - 4 WIRE PASSES THROUGH FLOOR IN THIS AREA.
 - 3 PLACE CROSS LOCATOR ON SENSORS OVER DIMPLES ON TANK.
2. ROUTE TANK SENSOR WIRES SO THEY DO NOT PASSOVER SENSORS. USE WIRE TIE MOUNT 155366-01-000 AND WIRE TIE 8343-01-000 AS NEEDED. TANK SURFACE MUST BE CLEANED USING ISOPROPYL ALCOHOL AND PRIMED WITH PRIMER 94.
 1. AT MINIMUM ALL WIRES TO BE SUPPORTED AND SECURED PER CODE REQUIREMENTS. USE CLAMP 10495 OR 10497 OR WIRE TIE 8343 OR 108046 AND SCREW G67-XX-XXX OR G56-XX-XXX AS APPROPRIATE FOR INSTALLATION.

FOR ELECTRICAL
TORQUE
SPECIFICATIONS
SEE DWG NO.
128783-01-000

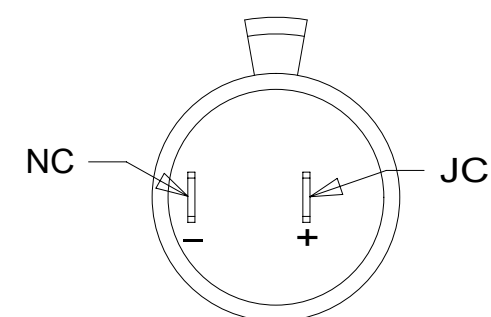
FOR ELECTRICAL
CALLOUTS
SEE DWG NO.
121339-01-000



DETAIL BB 4



DETAIL BA



DETAIL BD

- 11 CENTER LAMP ABOVE MEDICINE CABINET.
- 10 SECURE ABOVE FLOOR WITH SCREW CALLED OUT.
- 9 MOVE SPEAKER TO BRACKET LOCATION WITH 41R
- 8 PLACE CROSS LOCATOR ON SENSORS OVER DIMPLES ON TANK.
- 7 CENTER LIGHT STRIP.
- 6 CIRCUIT FROM WIRE ASM-CHASSIS.
- 5 CIRCUIT FROM WIRE ASM-COACH.
- 4 FOR REFERENCE ONLY. SEE LOAD CENTER/ATS ASM FOR ADDITIONAL INFORMATION.
- 3 CLEAN SURFACE WITH CLEAN TOWEL.
- 2 WIRE PASSES THROUGH FLOOR IN THIS AREA.
1. AT MINIMUM ALL WIRES TO BE SUPPORTED AND SECURED PER CODE REQUIREMENTS. USE CLAMP 10495 OR 10497 OR WIRE TIE 8343 OR 108046 AND SCREW G67-XX-XXX OR G56-XX-XXX AS APPROPRIATE FOR INSTALLATION.

NOTES:

- 11 LIGHT-VANITY, CURVED LED
301249-01-CHT
CAP-SCREW
168409-01-CHT (2)
WASHER
168409-02-CHT (2)
SCREW
000G67-10-08U (2)
BRACKET-MOUNT, LIGHT
000010503 / 311044-01-CHT
SCREW
000G39-10-16U (4)
DETAIL BE

- CONTROL-WATER HEATER
000027745 / 316105-01-CHT
SCREW
G67-08-12U (2)

- TOILET-TECMA, WALL SWITCH
170062-02-CHT

- SWITCH
DETAIL EC

- TO LIGHT-TAPE, LED

- WIRE ASM-TOILET
172776-01-000
TOILET-TANK SENSOR
170062-03-000
TOILET-SENSOR HARNESS
170062-05-000

- WIRE ASM-CHASSIS (REFERENCE)

- TO WIRE ASM-SIDEWALL

- SWITCH
DETAIL EJ

- WIRE ASM-COACH
000002515 / 310095-01-000

- CONTROL-WATER PUMP
176001-01-000
SCREW
G11-08-12U (2)
DETAIL BA

- 2 PIN HSG TO WATER PUMP

- USB-CHARGER DUAL, DC
188312-01-000

- WIRE ASM-HEATER, RELAY
153891-01-000
RELAY
63912-02-000 10
SCREW
G11-08-12U

- TO SLIDEOUT CONTROL VIEW DA

- WIRE ASM-WATER TANK
151317-04-000

- 2 PIN HSG TO BLACK TANK SENSOR HARNESS

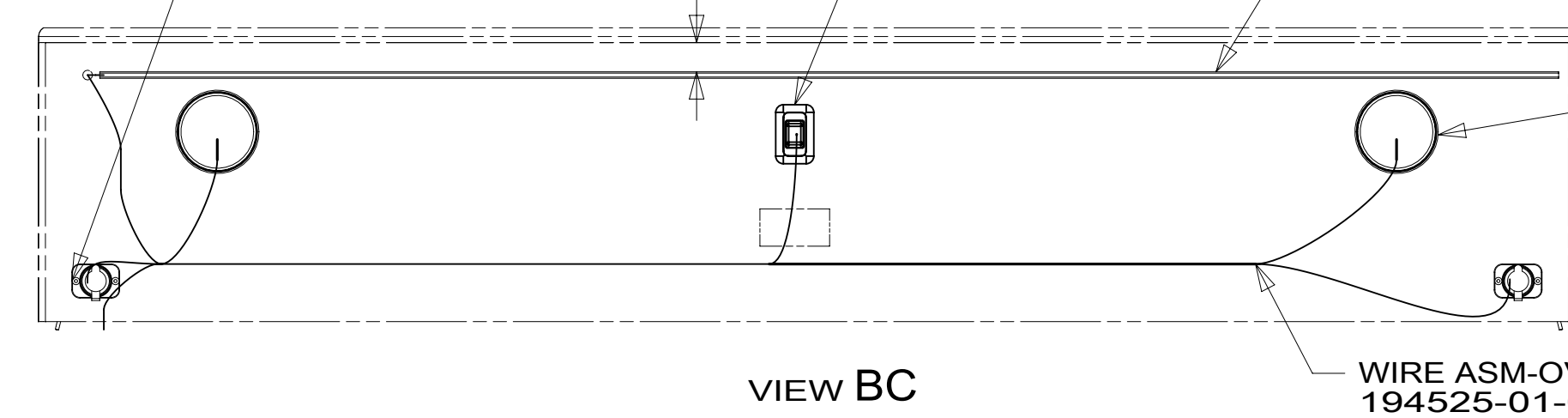
- USB-CHARGER DUAL, DC
188312-01-000 (2)
DETAIL BD

- SWITCH
DETAIL EN

- LIGHT-TAPE, LED
187693-36-CHT

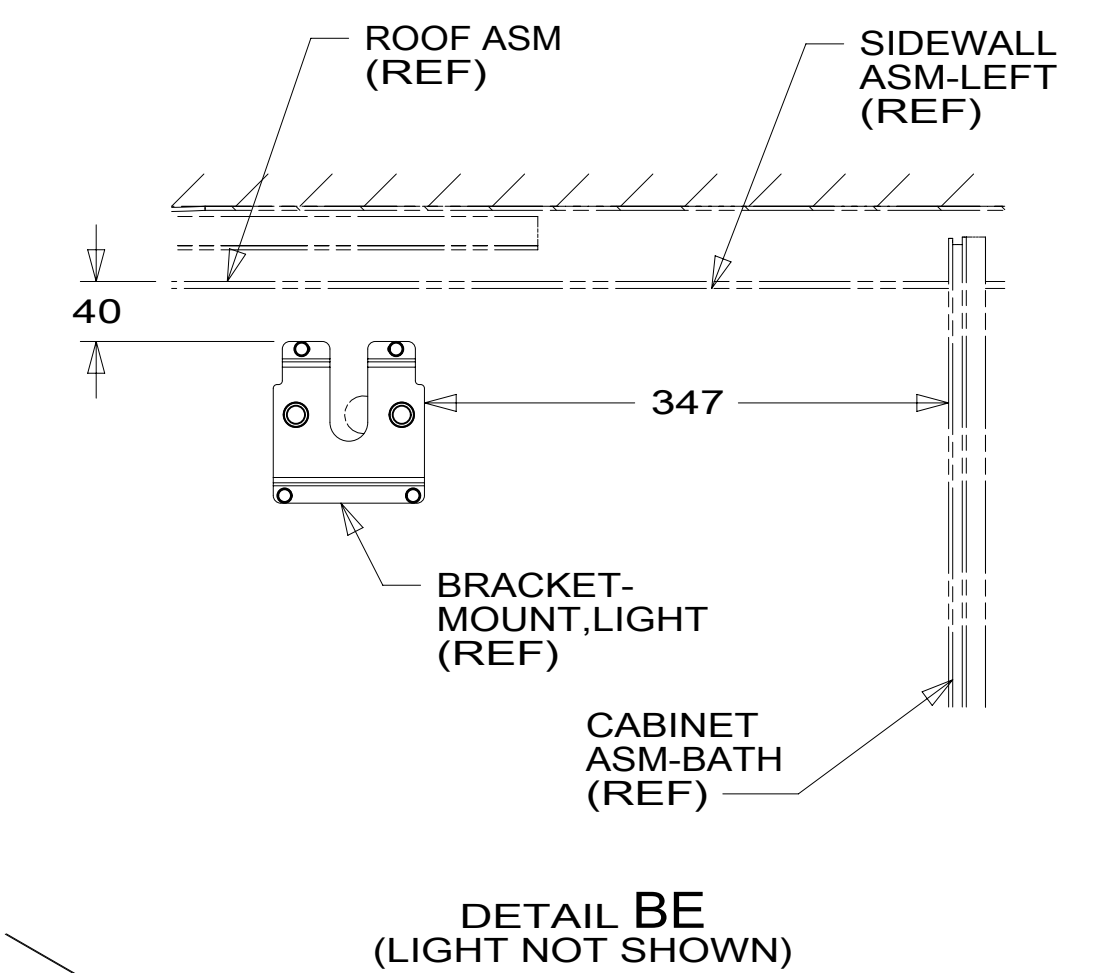
- SPEAKER-ROUND
160868-01-CHT (2)
SPEAKER-GRILLE, ROUND
160868-02-CHT (2)
SCREW
G11-08-08U (8)

- WIRE ASM-OVHD
194525-01-000



FOR ELECTRICAL TORQUE SPECIFICATIONS SEE DWG NO. 128783-01-000

FOR ELECTRICAL CALLOUTS SEE DWG NO. 121339-01-000



DETAIL BE (LIGHT NOT SHOWN)

- BRACKET-SPEAKER
194218-01-CHT
SCREW
G39-08-12U (4) 41R

- SPEAKER
124884-01-000
GRILL
151844-01-CHT
SCREW
G11-08-12U (4) 9

- PANEL-COVER, SPEAKER
000014799 / 311949-01-CHT
SCREW
000G11-10-12U (4) 14W

- THERMOSTAT
000016556 / 313194-01-CHT 25Q
000016270 / 313193-01-CHT 29Z
PLATE-SPACER, THERMOSTAT
000018276 / 313583-01-CHT
SCREW
G11-06-08U (2)

- TO WIRE ASM-SIDEWALL

- WIRE ASM-RESISTOR
140195-01-000

- WIRE ASM-COACH TO RIGHT SIDE

- 2 PIN HSG TO GREY TANK SENSOR HARNESS

- 14W DINETTE
41R SOFA/SLEEPER
25Q A/C ROOF-MOUNT
29Z A/C 14,800 - HEAT PUMP
23R DRAINAGE SYSTEM/HEAT-PREWIRE
23T DRAINAGE SYSTEM-HEATED
265 CODES/STANDARDS-CSA/CMVSS
1B1 CODES/STANDARDS USA

DESCRIPTION:	1B1 265	
WIRING INSTL-BODY, 12V		
SHEET:	ITEM/PART NO:	REV
2 OF 8	000178019 / 30230901000	

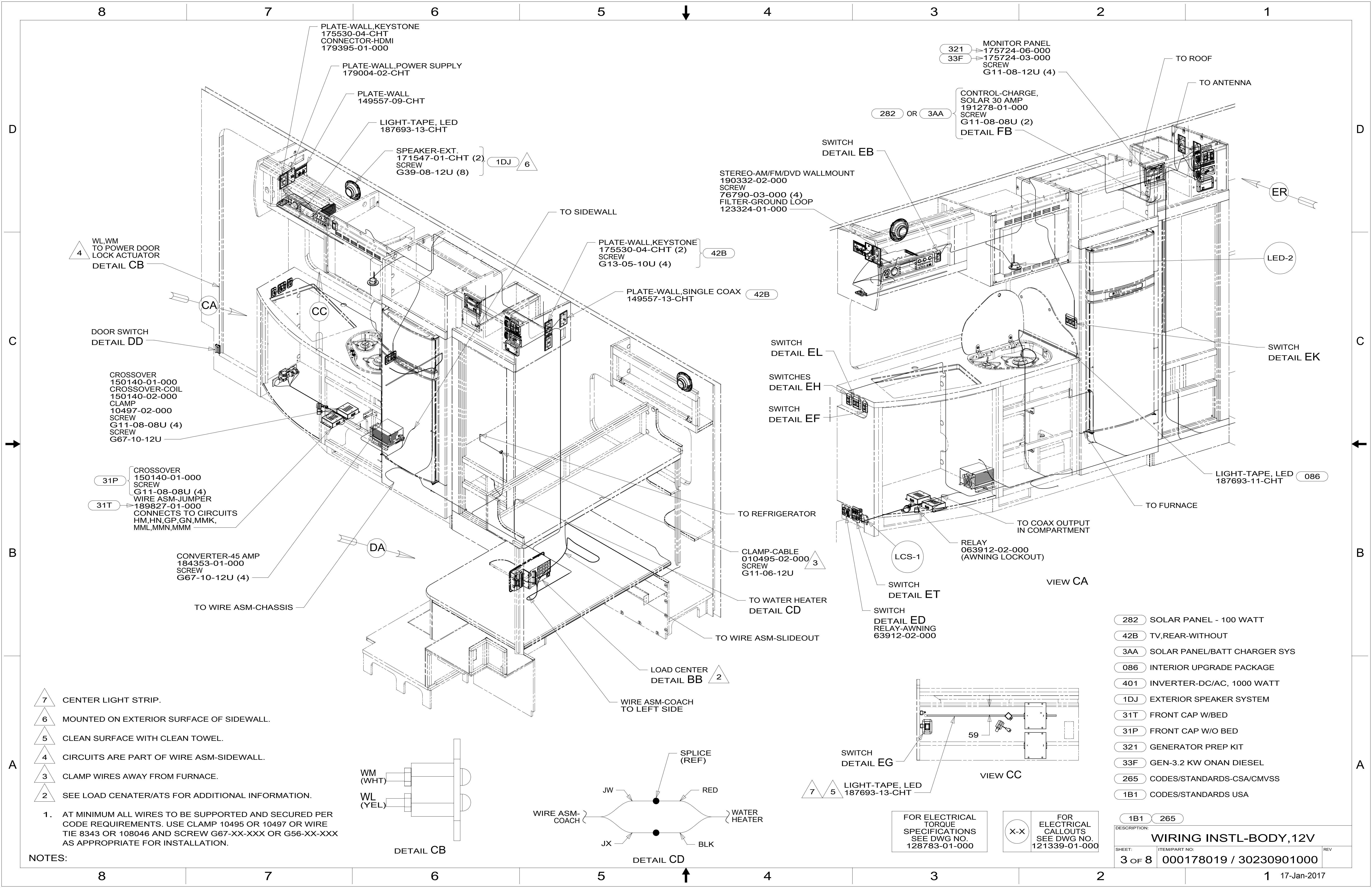


PLATE-WALL,KEYSTONE
175530-04-CHT
CONNECTOR-HDMI
179395-01-000

PLATE-WALL,POWER SUPPLY
179004-02-CHT

PLATE-WALL
149557-09-CHT

LIGHT-TAPE, LED
187693-13-CHT

SPEAKER-EXT.
171547-01-CHT (2)
SCREW
G39-08-12U (8)

321 MONITOR PANEL
175724-06-000
33F 175724-03-000
SCREW
G11-08-12U (4)

CONTROL-CHARGE,
SOLAR 30 AMP
191278-01-000
SCREW
G11-08-08U (2)
DETAIL FB

STEREO-AM/FM/DVD WALLMOUNT
190332-02-000
SCREW
76790-03-000 (4)
FILTER-GROUND LOOP
123324-01-000

PLATE-WALL,KEYSTONE
175530-04-CHT (2)
SCREW
G13-05-10U (4)

PLATE-WALL,SINGLE COAX
149557-13-CHT

4 WL,WM
TO POWER DOOR
LOCK ACTUATOR
DETAIL CB

DOOR SWITCH
DETAIL DD

CROSSOVER
150140-01-000
CROSSOVER-COIL
150140-02-000
CLAMP
10497-02-000
SCREW
G11-08-08U (4)
SCREW
G67-10-12U

31P CROSSOVER
150140-01-000
SCREW
G11-08-08U (4)
31T WIRE ASM-JUMPER
189827-01-000
CONNECTS TO CIRCUITS
HM,HN,GP,GN,MMK,
MML,MMN,MMM

CONVERTER-45 AMP
184353-01-000
SCREW
G67-10-12U (4)

TO WIRE ASM-CHASSIS

SWITCH
DETAIL EB

SWITCH
DETAIL EL

SWITCHES
DETAIL EH

SWITCH
DETAIL EF

TO REFRIGERATOR

CLAMP-CABLE
010495-02-000
SCREW
G11-06-12U

TO WATER HEATER
DETAIL CD

TO WIRE ASM-SLIDEOUT

LOAD CENTER
DETAIL BB

WIRE ASM-COACH
TO LEFT SIDE

TO ROOF

TO ANTENNA

ER

LED-2

SWITCH
DETAIL EK

LIGHT-TAPE, LED
187693-11-CHT

TO FURNACE

RELAY
063912-02-000
(AWNING LOCKOUT)

LCS-1

SWITCH
DETAIL ET

SWITCH
DETAIL ED
RELAY-AWNING
63912-02-000

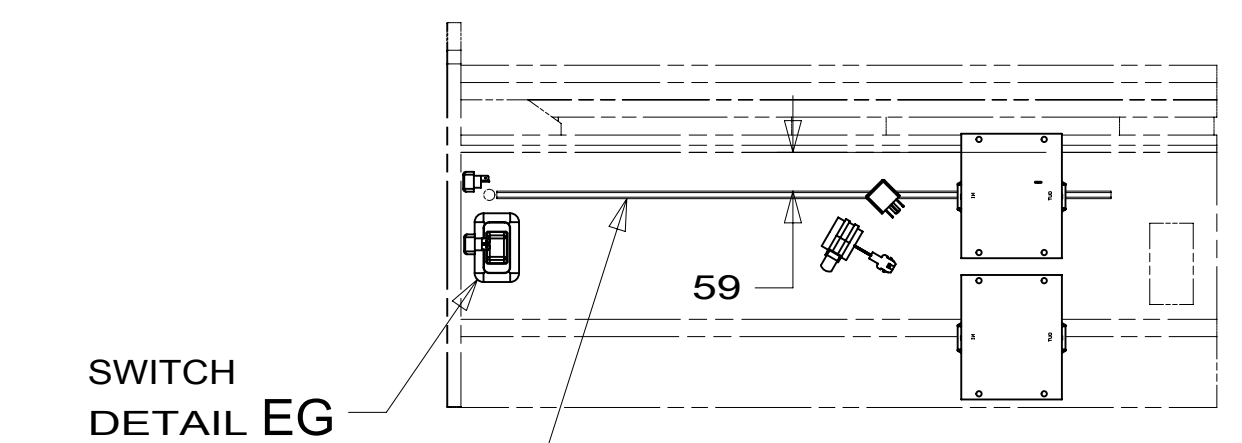
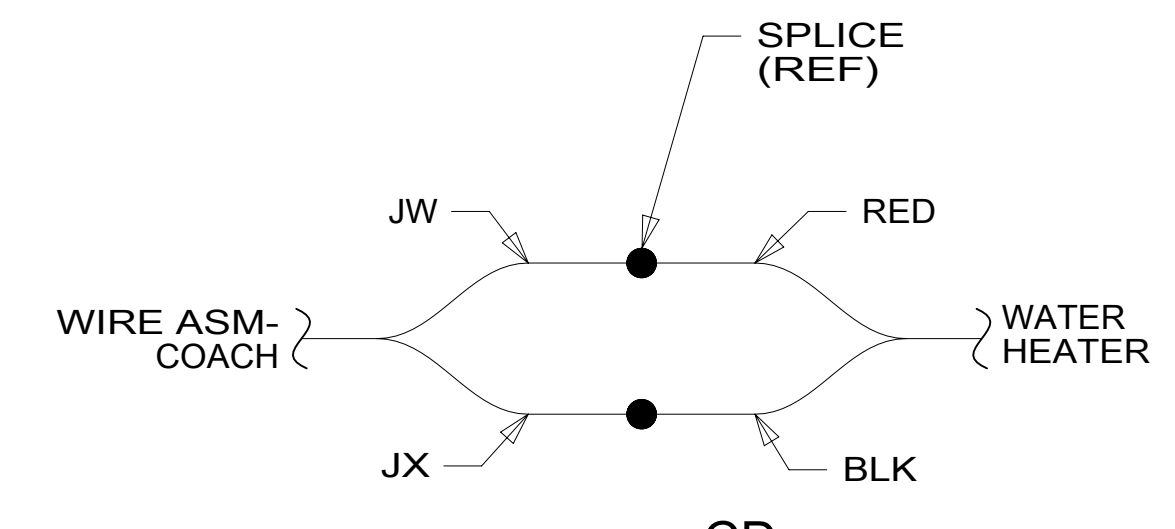
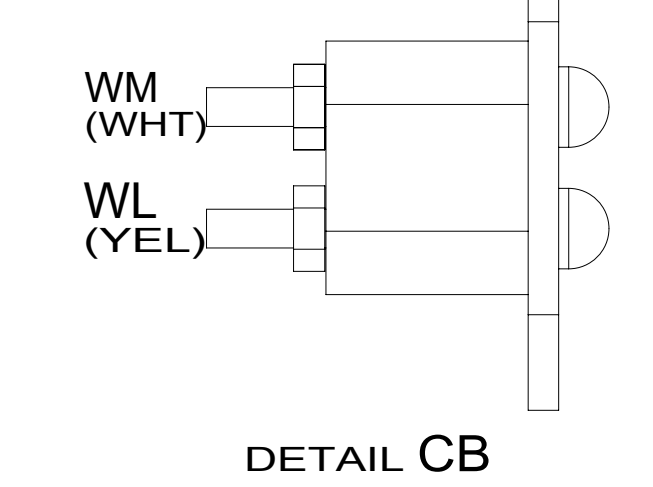
VIEW CA

- 282 SOLAR PANEL - 100 WATT
- 42B TV,REAR-WITHOUT
- 3AA SOLAR PANEL/BATT CHARGER SYS
- 086 INTERIOR UPGRADE PACKAGE
- 401 INVERTER-DC/AC, 1000 WATT
- 1DJ EXTERIOR SPEAKER SYSTEM
- 31T FRONT CAP W/BED
- 31P FRONT CAP W/O BED
- 321 GENERATOR PREP KIT
- 33F GEN-3.2 KW ONAN DIESEL
- 265 CODES/STANDARDS-CSA/CMVSS
- 1B1 CODES/STANDARDS USA

- 7 CENTER LIGHT STRIP.
- 6 MOUNTED ON EXTERIOR SURFACE OF SIDEWALL.
- 5 CLEAN SURFACE WITH CLEAN TOWEL.
- 4 CIRCUITS ARE PART OF WIRE ASM-SIDEWALL.
- 3 CLAMP WIRES AWAY FROM FURNACE.
- 2 SEE LOAD CENTER/ATS FOR ADDITIONAL INFORMATION.

1. AT MINIMUM ALL WIRES TO BE SUPPORTED AND SECURED PER CODE REQUIREMENTS. USE CLAMP 10495 OR 10497 OR WIRE TIE 8343 OR 108046 AND SCREW G67-XX-XXX OR G56-XX-XXX AS APPROPRIATE FOR INSTALLATION.

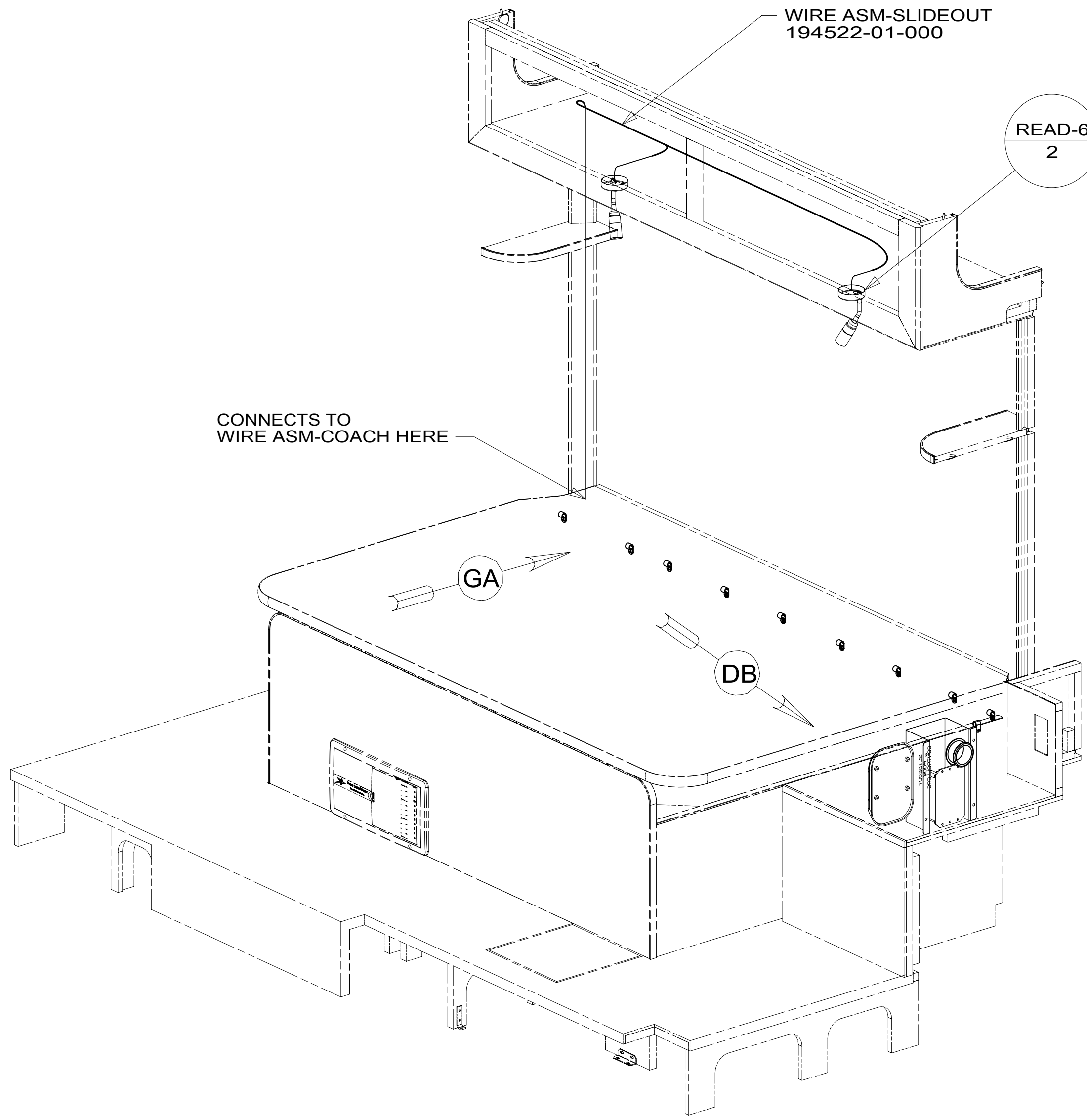
NOTES:



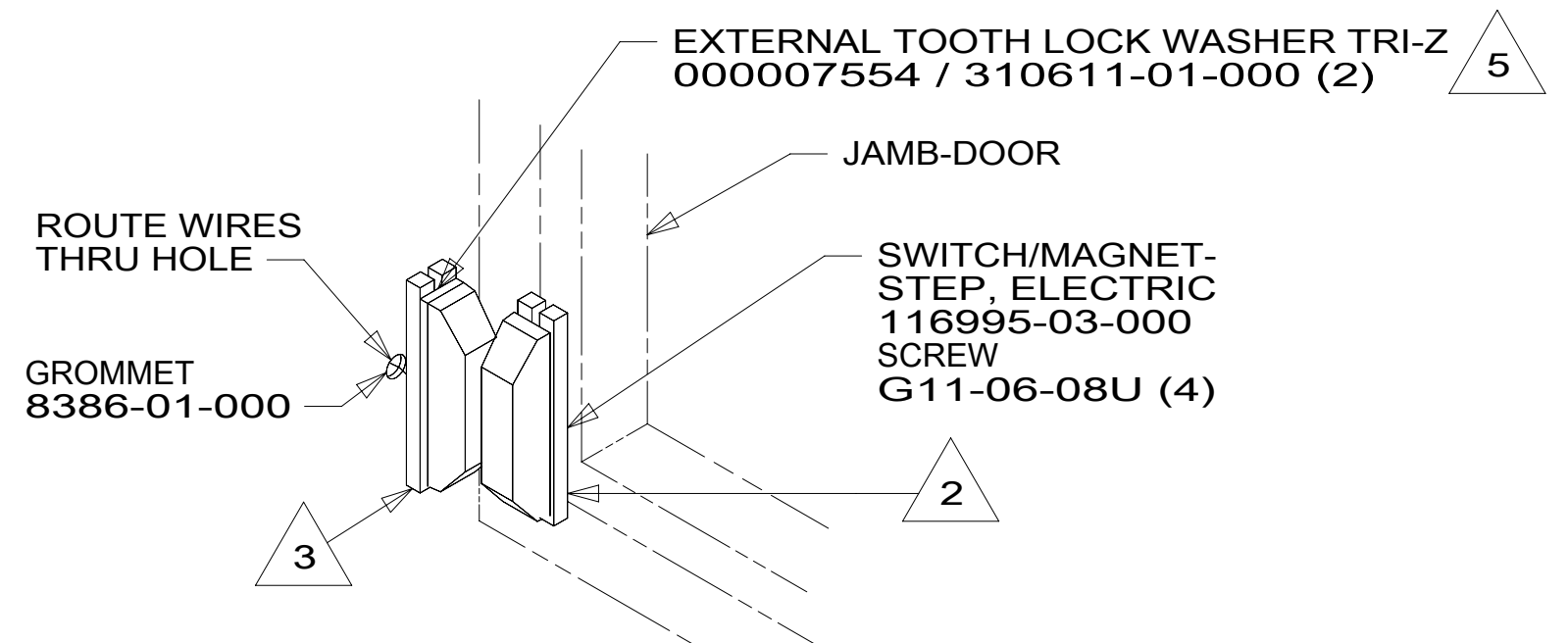
FOR ELECTRICAL TORQUE SPECIFICATIONS SEE DWG NO. 128783-01-000

FOR ELECTRICAL CALLOUTS SEE DWG NO. 121339-01-000

DESCRIPTION:	1B1 265	
WIRING INSTL-BODY, 12V		
SHEET:	ITEM/PART NO.:	REV
3 OF 8	000178019 / 30230901000	



VIEW DA



DETAIL DD

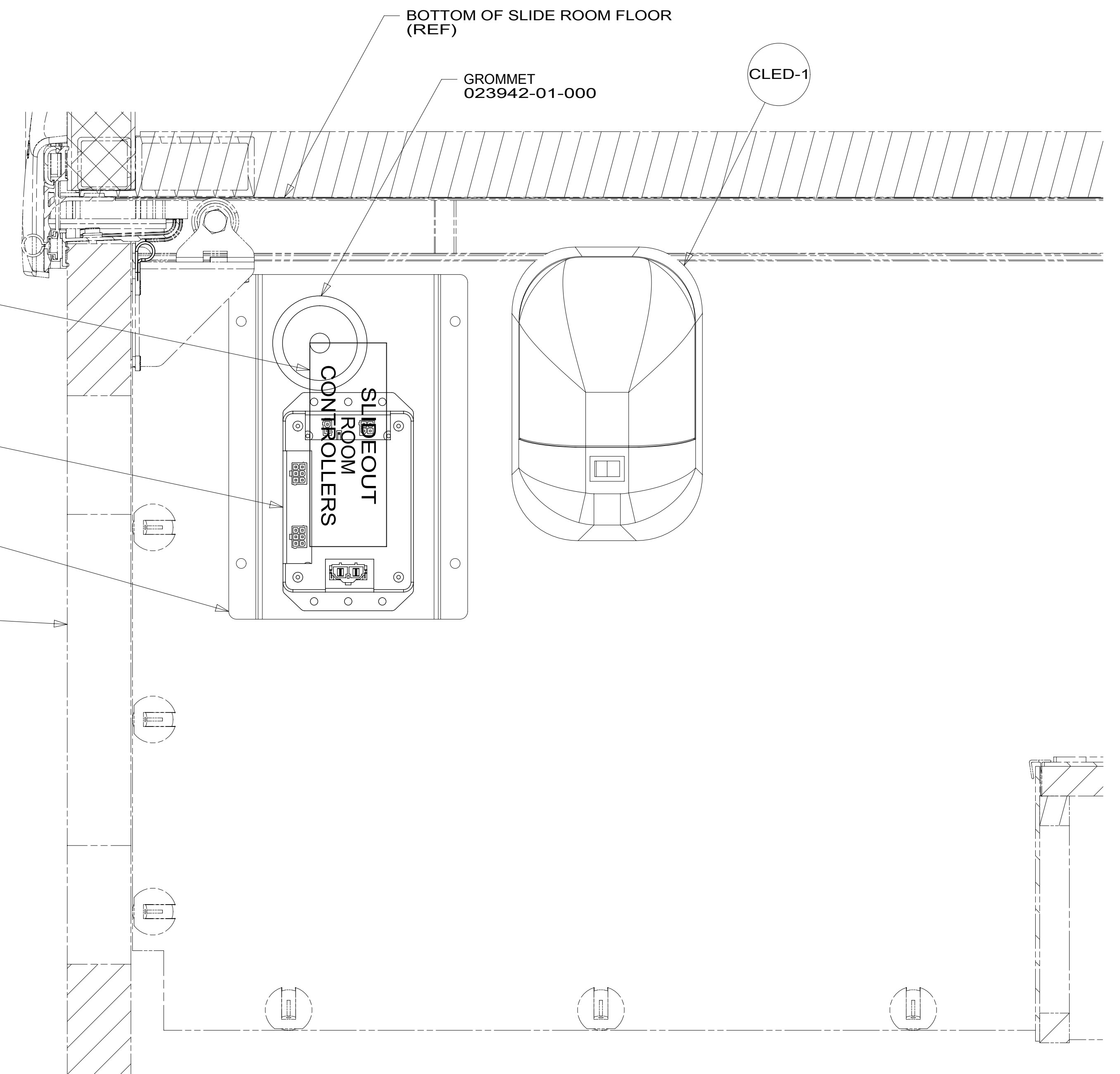
- NOTES:
- 5 REMOVE SCREWS FROM MAGNET SWITCH TO INSTALL LOCK WASHERS AND TERMINALS.
 - 4 FROM WIRE ASM-CHASSIS.
 - 3 MOUNT SWITCH AND SPACER TO BLOCK ON JAMB. ADJUST HEIGHT TO MATCH MAGNET.
 - 2 MOUNT MAGNET USING PILOT HOLES IN SCREEN DOOR FRAME. MOUNT WITH MAGNET TOWARD SWITCH.
 - 1 CONNECT RED WIRE TO YELLOW WIRE AND CONNECT BLACK WIRE TO WHITE WIRE.

LABEL-SLIDEOUT CTL 098379-09-000

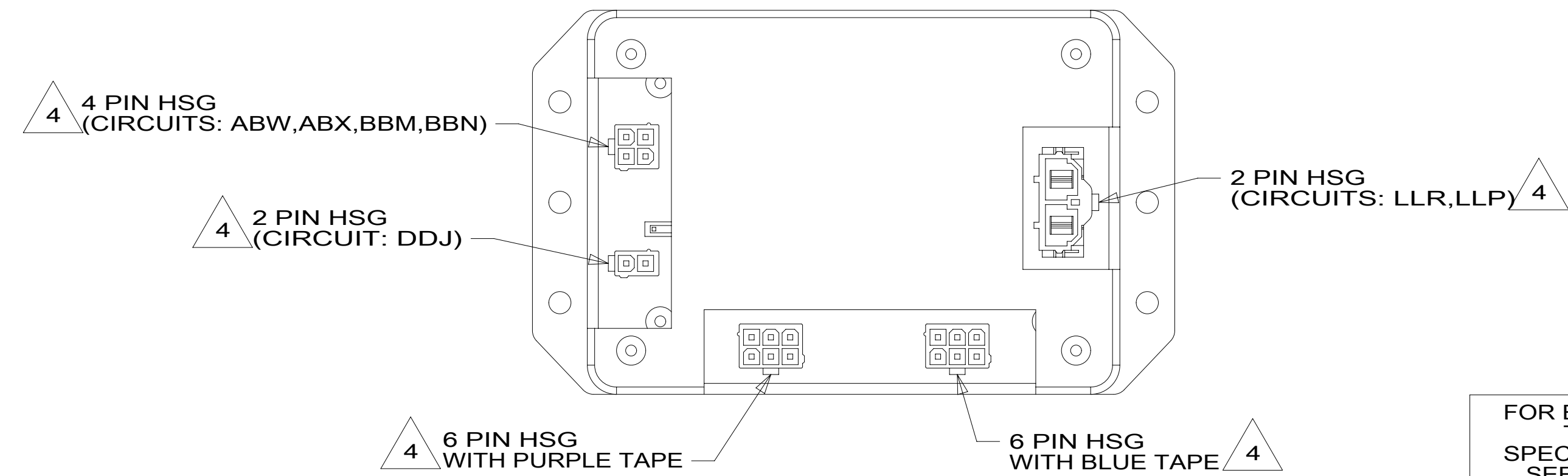
CONTROL-SLIDEOUT 189400-01-000 SCREW G67-08-12U (4) VIEW DC

COVER-ELECTRICAL 194965-01-CHT

BACKWALL (REF)



VIEW DB



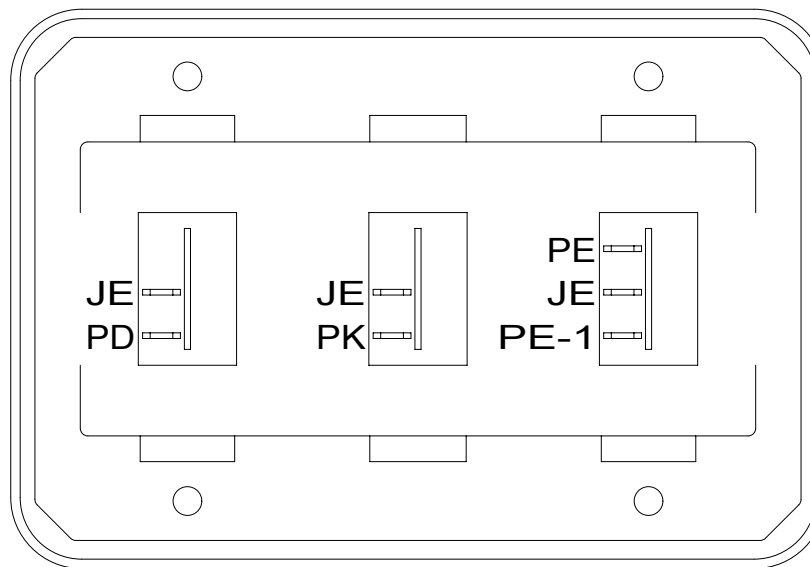
VIEW DC

FOR ELECTRICAL TORQUE SPECIFICATIONS SEE DWG NO. 128783-01-000

FOR ELECTRICAL CALLOUTS SEE DWG NO. 121339-01-000

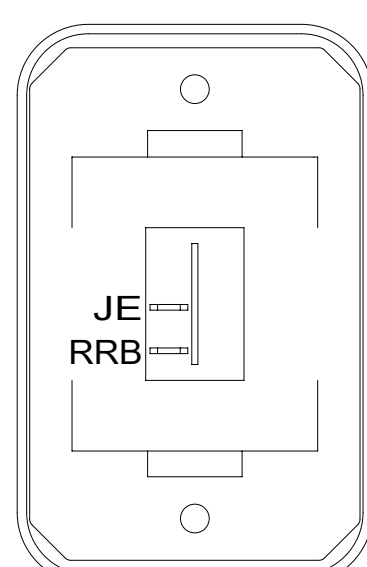
- 265 CODES/STANDARDS-CSA/CMVSS
- 1B1 CODES/STANDARDS USA

DESCRIPTION:		1B1 265	
WIRING INSTL-BODY, 12V			
SHEET:	ITEM/PART NO.:	REV	
4 OF 8	000178019 / 30230901000		



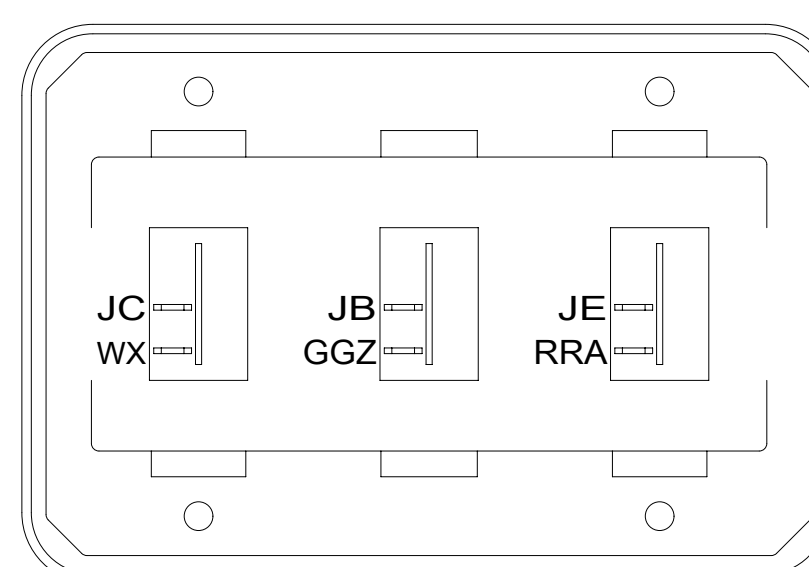
DETAIL EA

SWITCH-ROCKER
135740-01-CHT (2)
135740-04-CHT
SWITCH-BASE
135741-03-CHT
SWITCH-BEZEL
135742-03-CHT
SCREW
G11-08-08U (4)



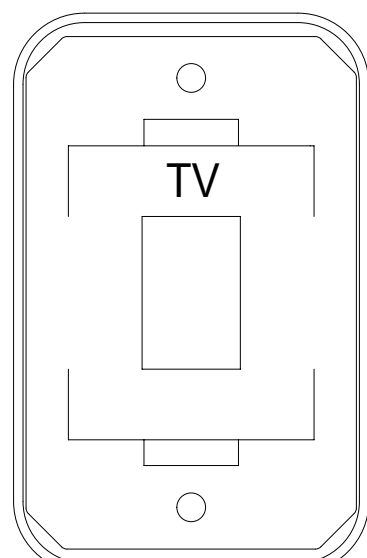
DETAIL EG

SWITCH-ROCKER
135740-01-CHT
SWITCH-BASE
135741-01-CHT
SWITCH-BEZEL
135742-01-CHT
SCREW
G11-08-08U (2)



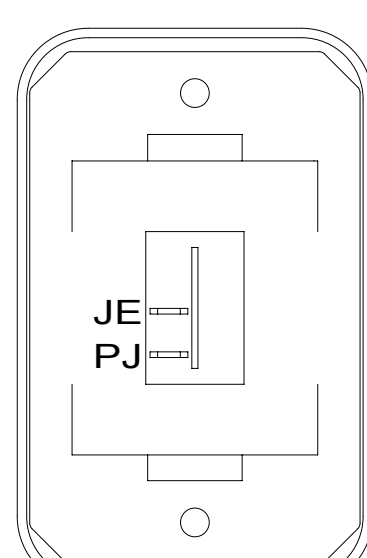
DETAIL EK

SWITCH-ROCKER
135740-01-CHT (3)
SWITCH-BASE
135741-03-CHT
SWITCH-BEZEL
135742-03-CHT
SCREW
G11-08-08U (4)



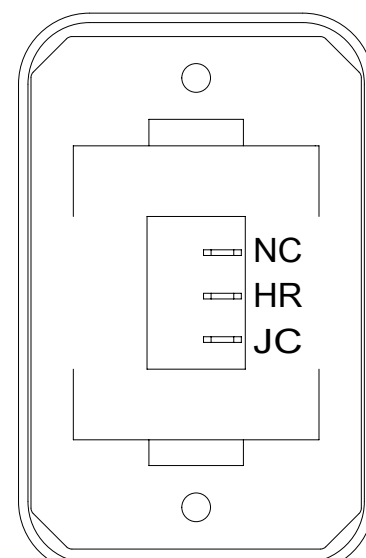
DETAIL EB

SWITCH-BLANK
138253-01-CHT
SWITCH-BASE
135741-01-CHT
SWITCH-BEZEL
135742-45-CHT
SCREW
G11-08-08U (2)



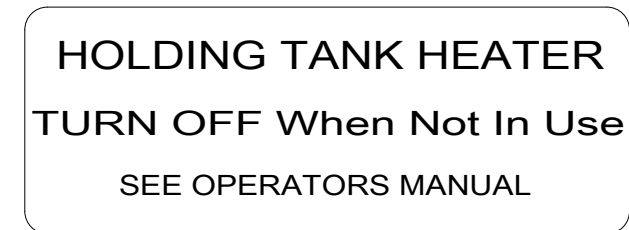
DETAIL EH

SWITCH-ROCKER
135740-01-CHT
SWITCH-BASE
135741-01-CHT
SWITCH-BEZEL
135742-01-CHT
SCREW
G11-08-08U (2)

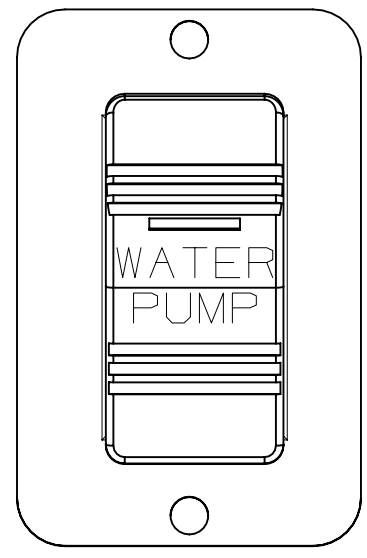


DETAIL EM

SWITCH-BLANK
138253-01-CHT ← 1JD
SWITCH-ROCKER
135740-06-CHT ← 23T OR 23R
SWITCH-BASE
135741-01-CHT
SWITCH-BEZEL
135742-01-CHT
SCREW
G11-08-08U (2)
LABEL
134563-01-CHT ← 23T OR 23R

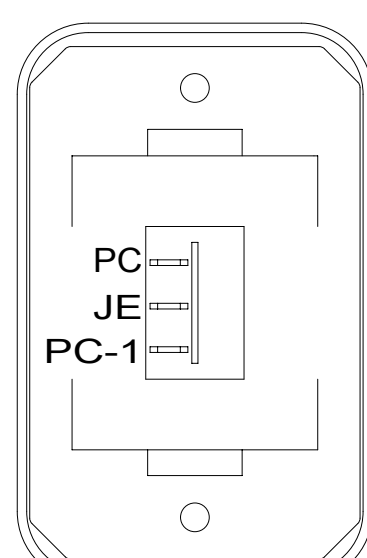


DETAIL EM



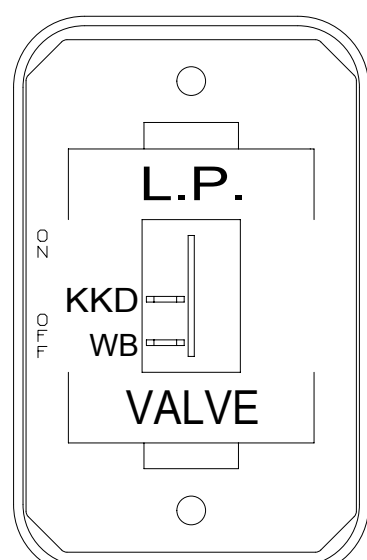
DETAIL EC

SWITCH
108357-21-000
ACTUATOR
108356-23-CHT
SCREW
G11-06-10U (2)
PLATE-SWITCH
144363-02-CHT



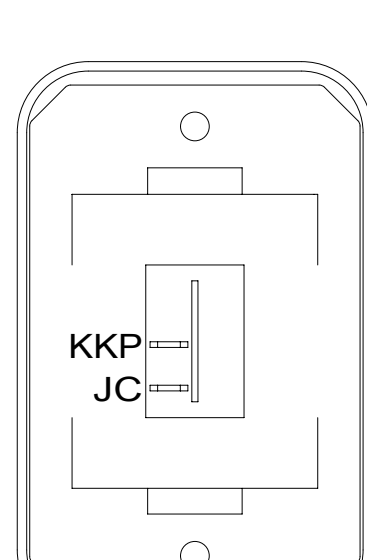
DETAIL EJ

SWITCH-ROCKER
135740-04-CHT
SWITCH-BASE
135741-01-CHT
SWITCH-BEZEL
135742-01-CHT
SCREW
G11-08-08U (2)
WIRE ASM-RESISTOR
140195-01-000



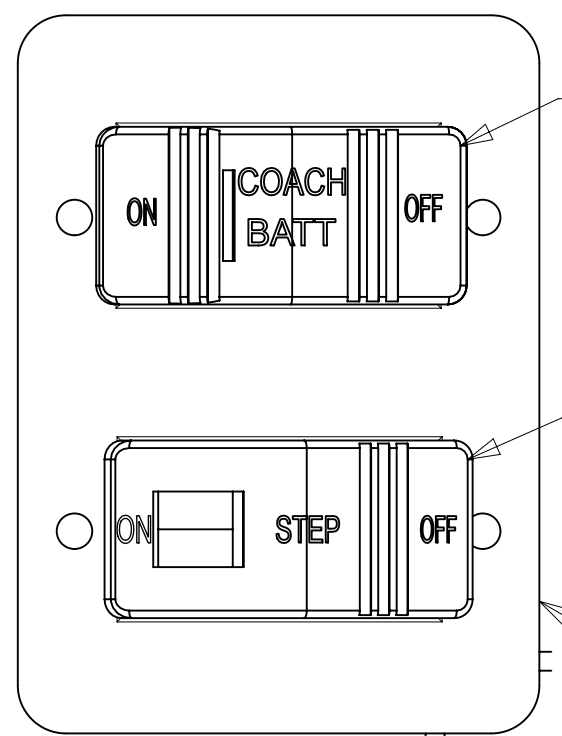
DETAIL EE

SWITCH-ROCKER
135740-01-CHT
SWITCH-BASE
135741-01-CHT
SWITCH-BEZEL
135742-59-CHT
SCREW
G11-08-08U (2)



DETAIL EN

SWITCH-ROCKER
135740-01-CHT
SWITCH-BASE
135741-01-CHT
SWITCH-BEZEL
135742-01-CHT
SCREW
G11-08-08U (2)

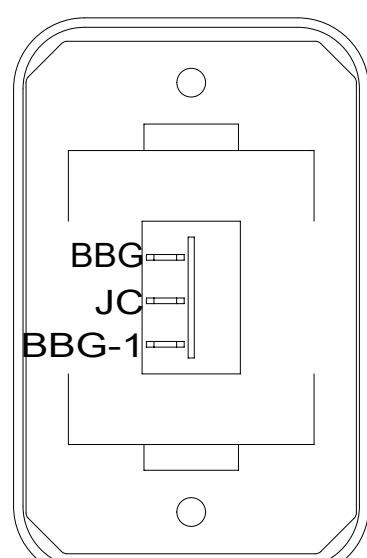


DETAIL ET

SWITCH-BATT DISC
108357-18-000
ACTUATOR-BATT DISC
108356-19-CHT
ADD WIRE ASM-THERM
186796-01-000

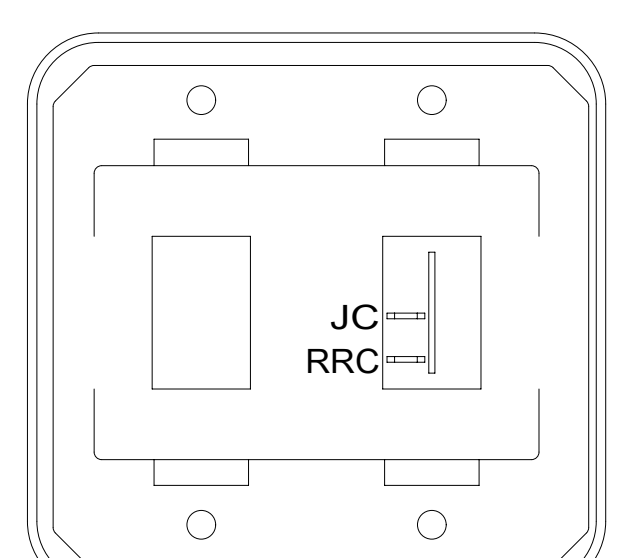
SWITCH-STEP
108357-19-000 1E2

PLATE-SWITCH
158431-17-CHT
SCREW
G11-06-10U (4)



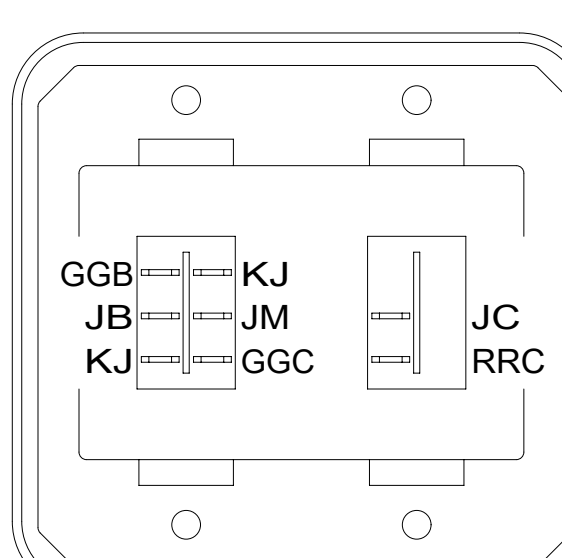
DETAIL EF

SWITCH-ROCKER
135740-04-CHT
SWITCH-BASE
135741-04-CHT
SWITCH-BEZEL
135742-01-CHT
SCREW
G11-08-08U (2)
WIRE ASM-RESISTOR
140195-01-000



DETAIL EL 41M

SWITCH-ROCKER
135740-01-CHT
SWITCH-BLANK
138253-01-CHT
SWITCH-BASE
135741-02-CHT
SWITCH-BEZEL
135742-02-CHT
SCREW
G11-08-08U (4)

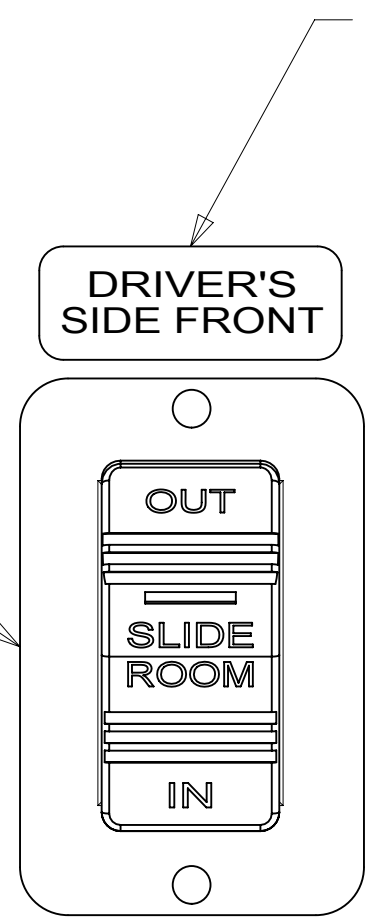


DETAIL EL 316

SWITCH-ROCKER
108357-06-000
ACTUATOR-SWITCH
108356-12-CHT

PLATE-SWITCH
158431-17-CHT
SCREW
G11-06-10U (4)

SWITCH-ROCKER
108357-14-000
ACTUATOR-SWITCH
108356-28-CHT



DRIVER'S SIDE FRONT

LABEL-SLIDEOUT,DRIVER,FRONT
163992-01-CHT

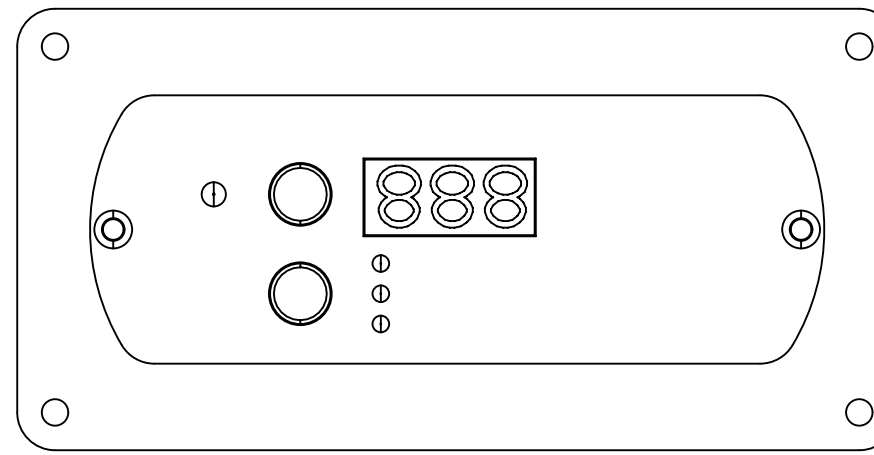
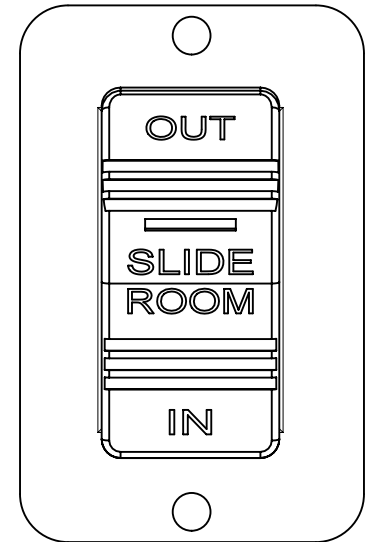
HOLDING TANK HEATER
TURN OFF When Not In Use
SEE OPERATORS MANUAL

SWITCH
DETAIL EM

SWITCH
DETAIL EE

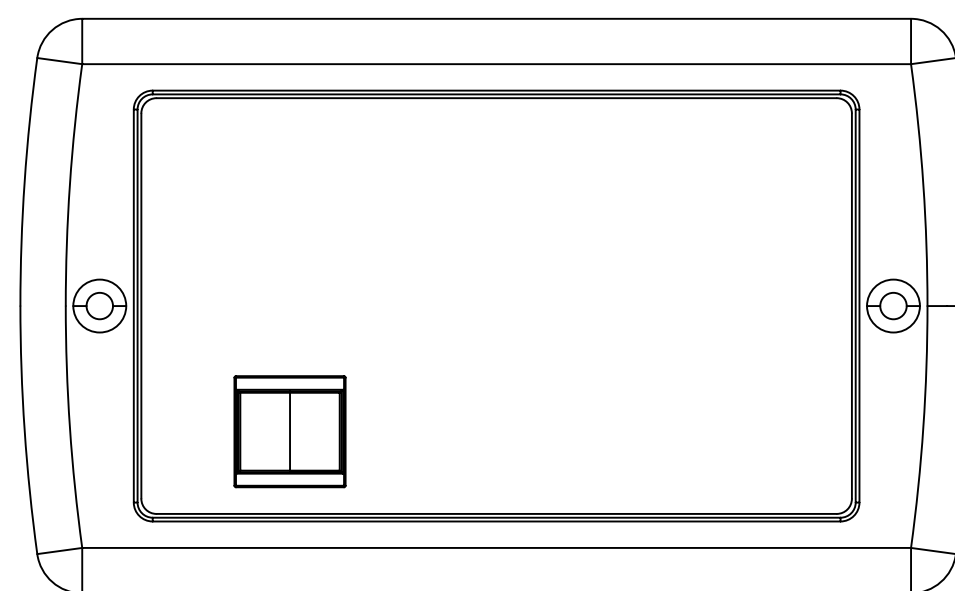
WARNING CRUSH HAZARD. Keep people and objects clear of the inside and the outside of the slideout room when operating. Failure to comply could result in death or serious injury.

LABEL-WARNING,SLIDEOUT
116549-01-000



REMOTE PANEL-INVERTER
(SUPPLIED WITH INVERTER)
MODULE-12V DISC
173355-01-000

401



PANEL-GENERATOR
(REFERENCE)

33F

DETAIL ER

- 33F GEN-3.2 KW ONAN DIESEL
- 401 INVERTER-DC/AC, 1000 WATT
- 1JD DRAINAGE SYSTEM-HEATED-W/O
- 316 SKYLIGHT/ROOF VENT, POWER
- 710 VENT ROOF-POWERED,INSULATED
- 23R DRAINAGE SYSTEM/HEAT-PREWIRE
- 23T DRAINAGE SYSTEM-HEATED
- 1E2 ENTRANCE STEP-ELEC.
- 265 CODES/STANDARDS-CSA/CMVSS
- 1B1 CODES/STANDARDS USA

FOR ELECTRICAL TORQUE SPECIFICATIONS SEE DWG NO. 128783-01-000

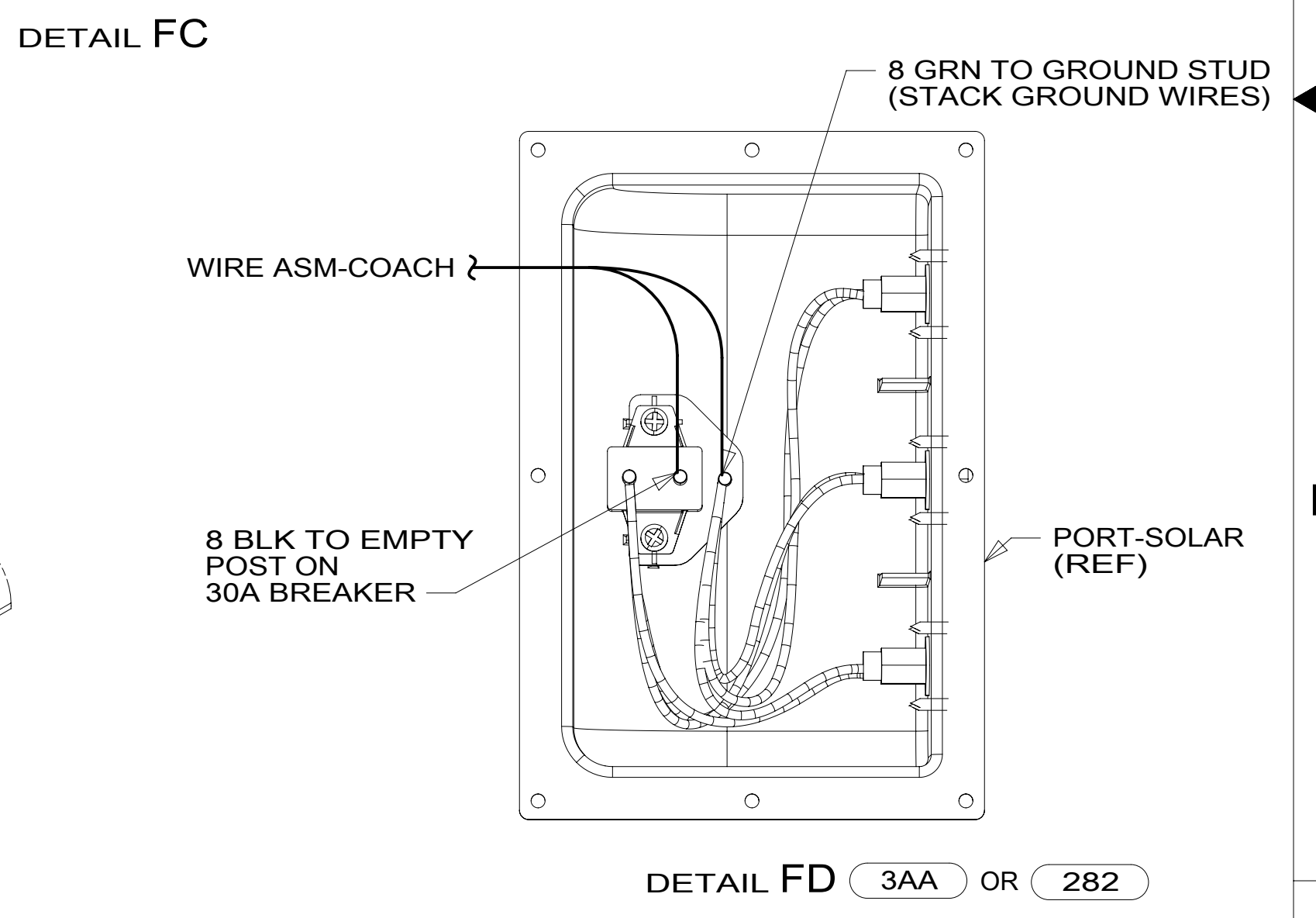
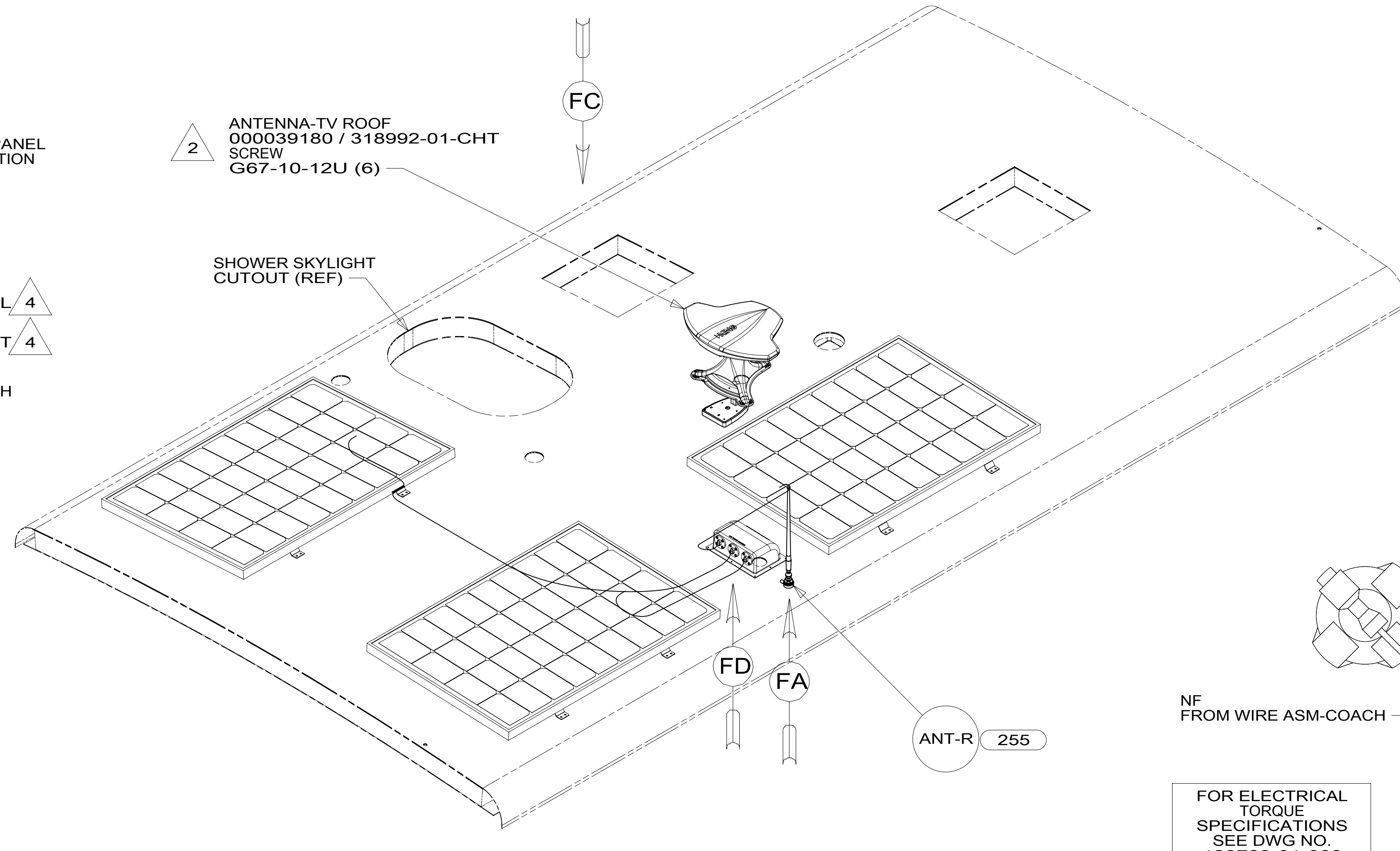
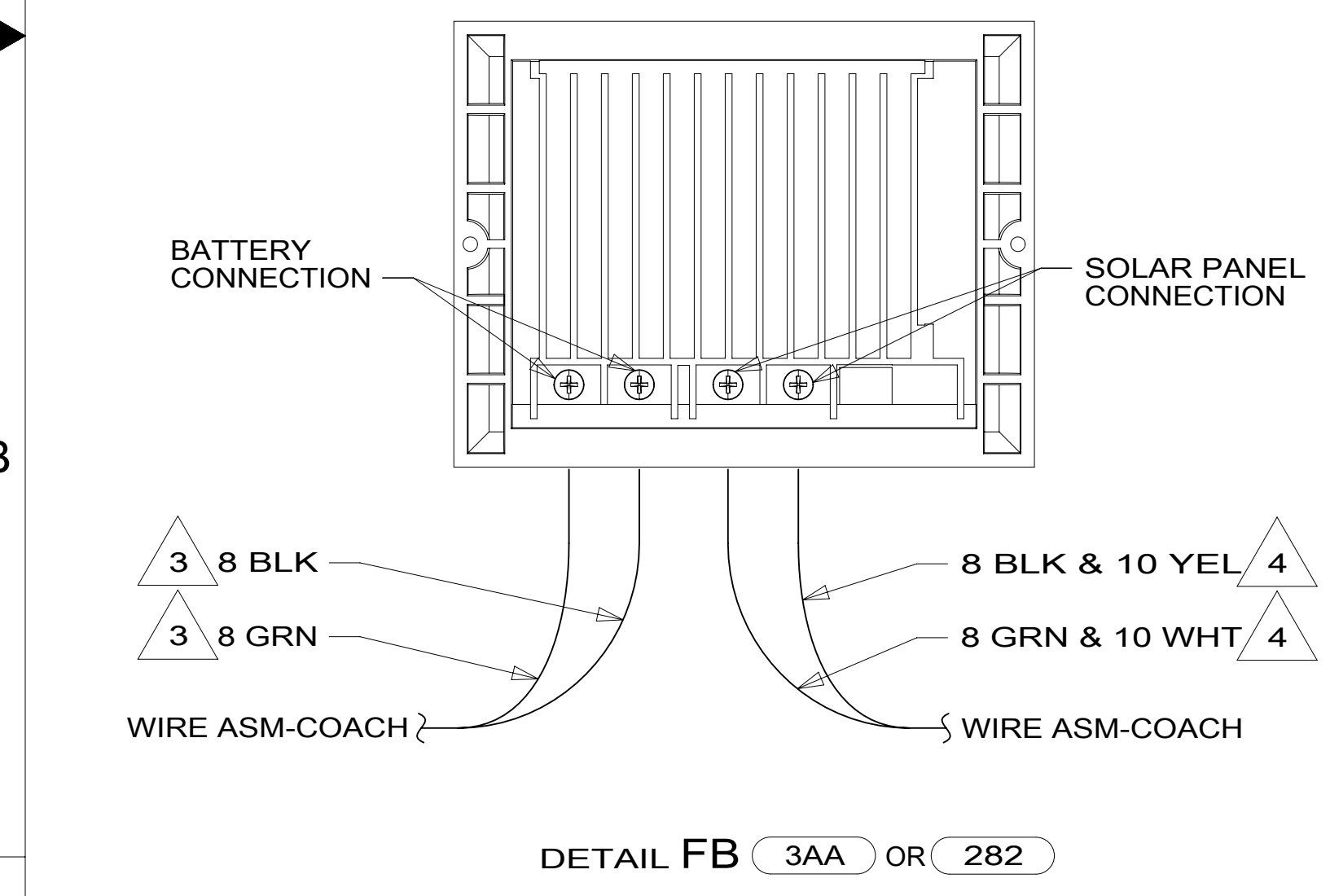
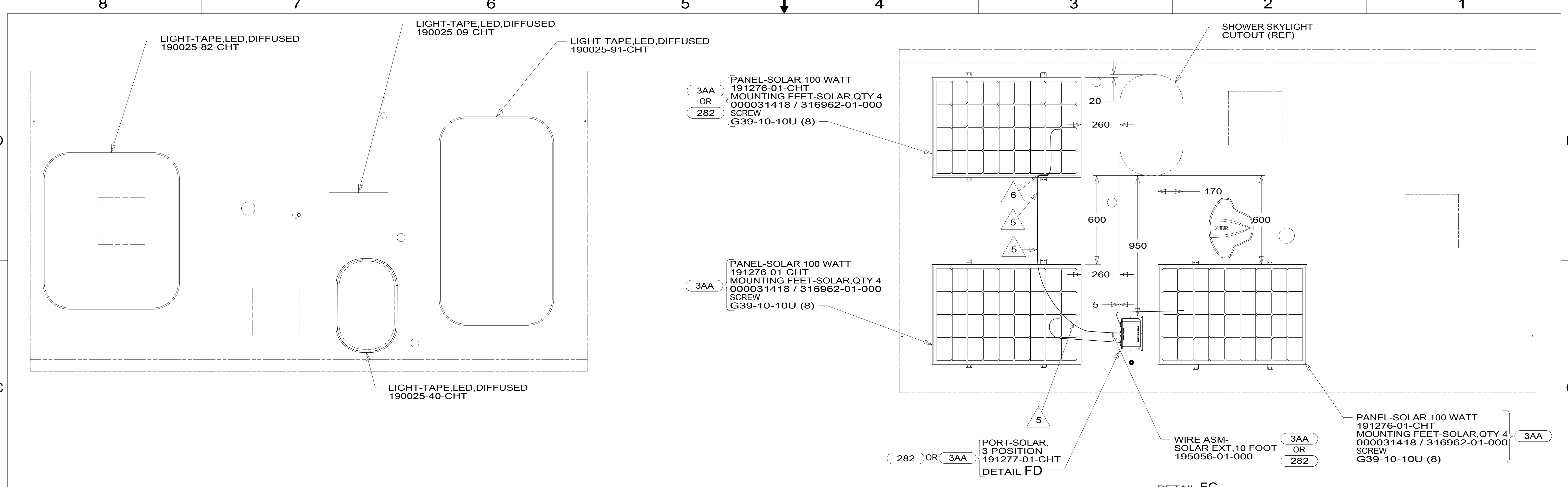
FOR ELECTRICAL CALLOUTS SEE DWG NO. 121339-01-000

1B1 265

DESCRIPTION:
WIRING INSTL-BODY, 12V

SHEET: 5 OF 8 ITEM/PART NO: 000178019 / 30230901000 REV

NOTES:
1 SUPPLIED WITH GENERATOR.



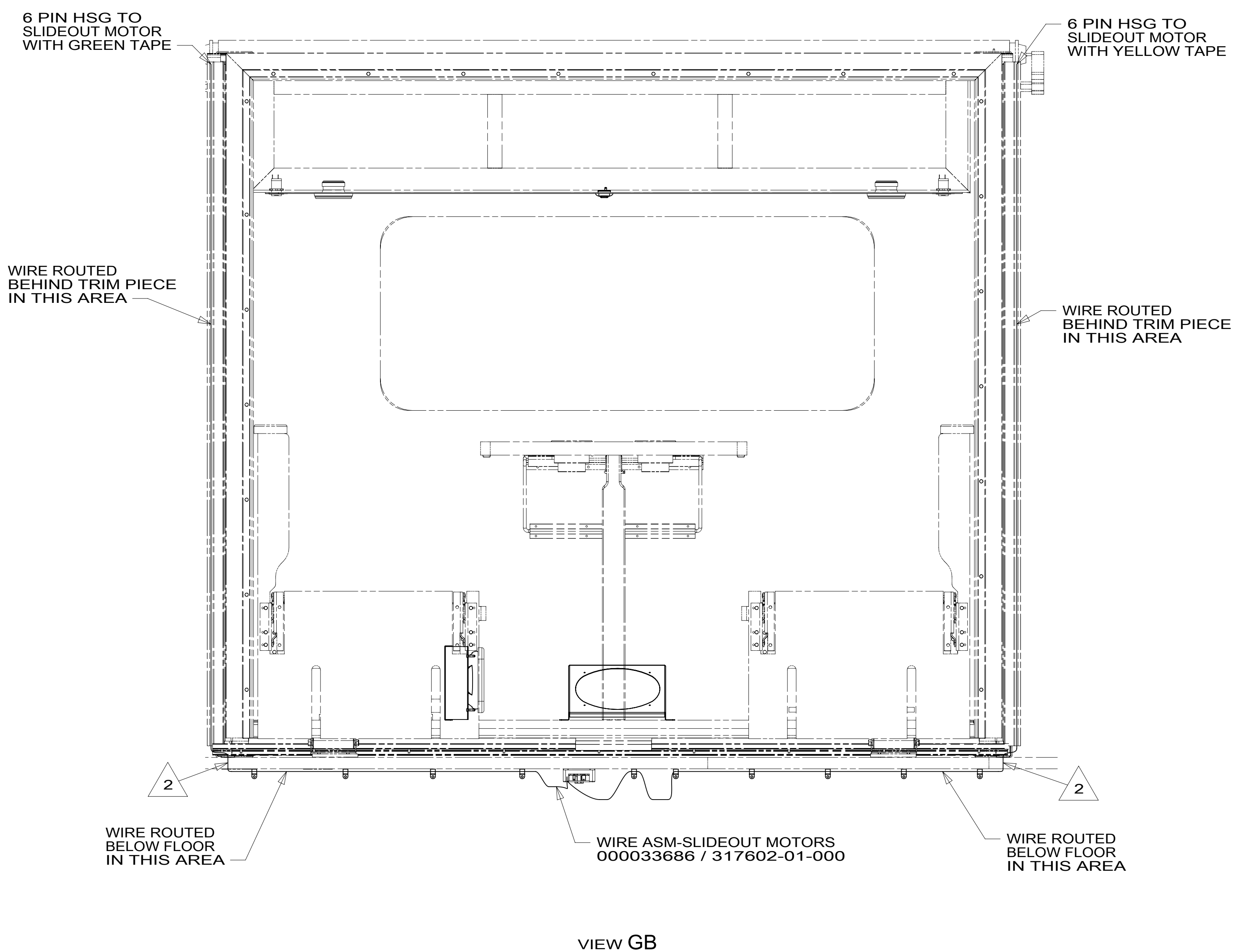
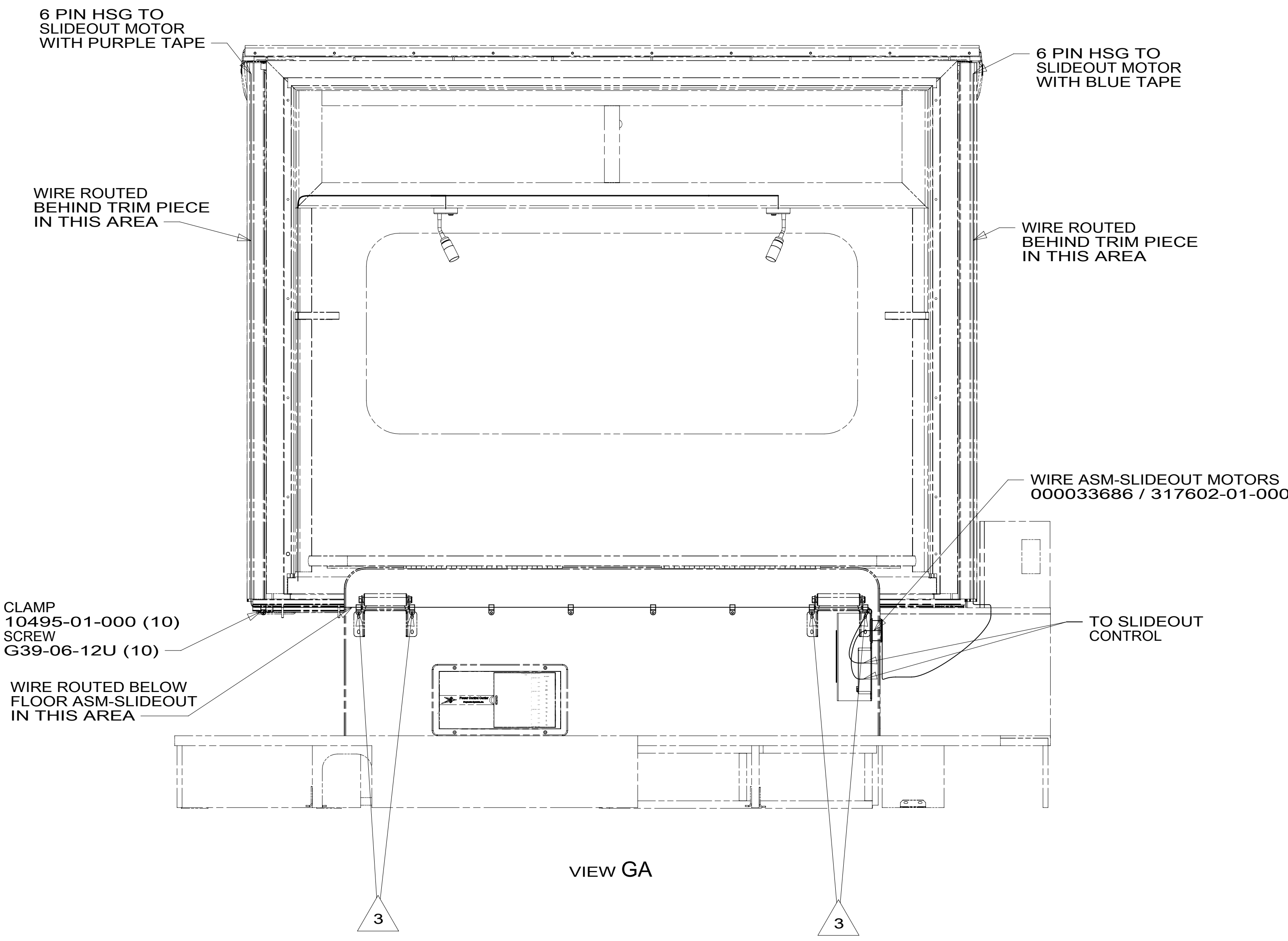
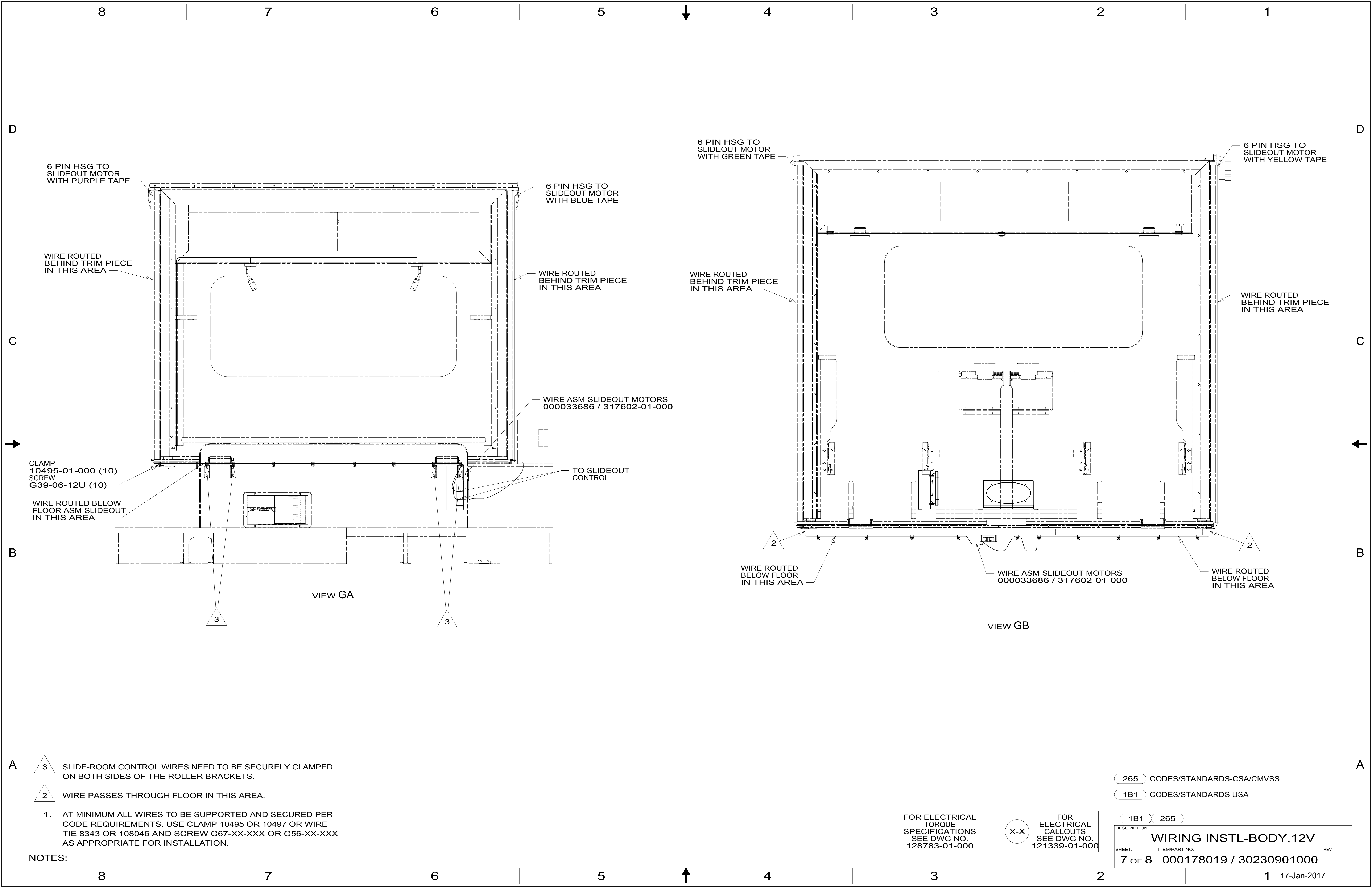
- NOTES:**
- 6 COIL CABLE AND TIE TO INSIDE OF SOLAR PANEL LEG WITH 008343-04-000.
 - 5 PLACE ROOF SEALANT HERE (APPROXIMATELY 75MM WIDE) AND PUSH THE CABLES INTO THE SEALANT TO STABILIZE THEM.
 - 4 WIRE IS MARKED WITH YELLOW TAPE.
 - 3 WIRE IS MARKED WITH GOLD TAPE.
 - 2 SEE ANTENNA INSTALLATION MANUAL FOR CORRECT INSTALLATION PROCEDURE.
 - 1 WRAP BRACKET LEGS AROUND ANTENNA BASE.

FOR ELECTRICAL TORQUE SPECIFICATIONS SEE DWG NO. 128783-01-000

FOR ELECTRICAL CALLOUTS SEE DWG NO. 121339-01-000

- 282 SOLAR PANEL - 100 WATT
- 3AA SOLAR PANEL/BATT CHARGER SYS
- 255 RADIO/AM/FM/CD/DVD, COACH
- 265 CODES/STANDARDS-CSA/CMVSS
- 1B1 CODES/STANDARDS USA

DESCRIPTION: WIRING INSTL-BODY, 12V		
SHEET: 6 OF 8	ITEM/PART NO: 000178019 / 30230901000	REV:



- 3 SLIDE-ROOM CONTROL WIRES NEED TO BE SECURELY CLAMPED ON BOTH SIDES OF THE ROLLER BRACKETS.
- 2 WIRE PASSES THROUGH FLOOR IN THIS AREA.
1. AT MINIMUM ALL WIRES TO BE SUPPORTED AND SECURED PER CODE REQUIREMENTS. USE CLAMP 10495 OR 10497 OR WIRE TIE 8343 OR 108046 AND SCREW G67-XX-XXX OR G56-XX-XXX AS APPROPRIATE FOR INSTALLATION.

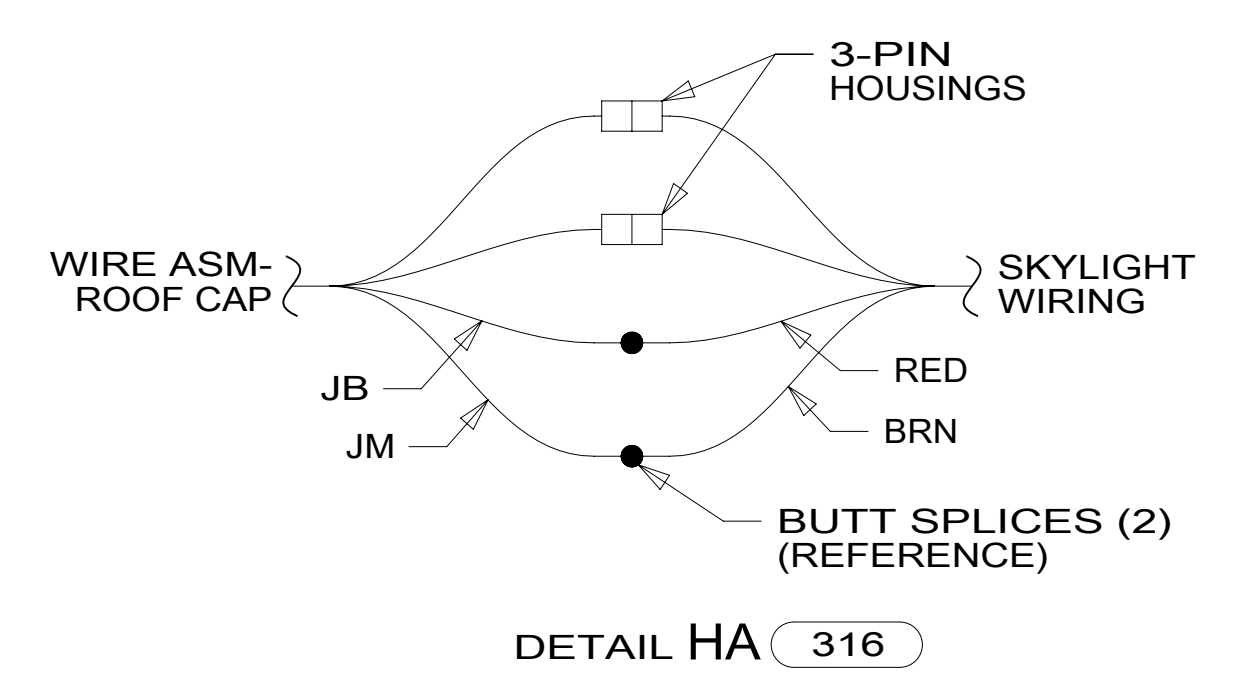
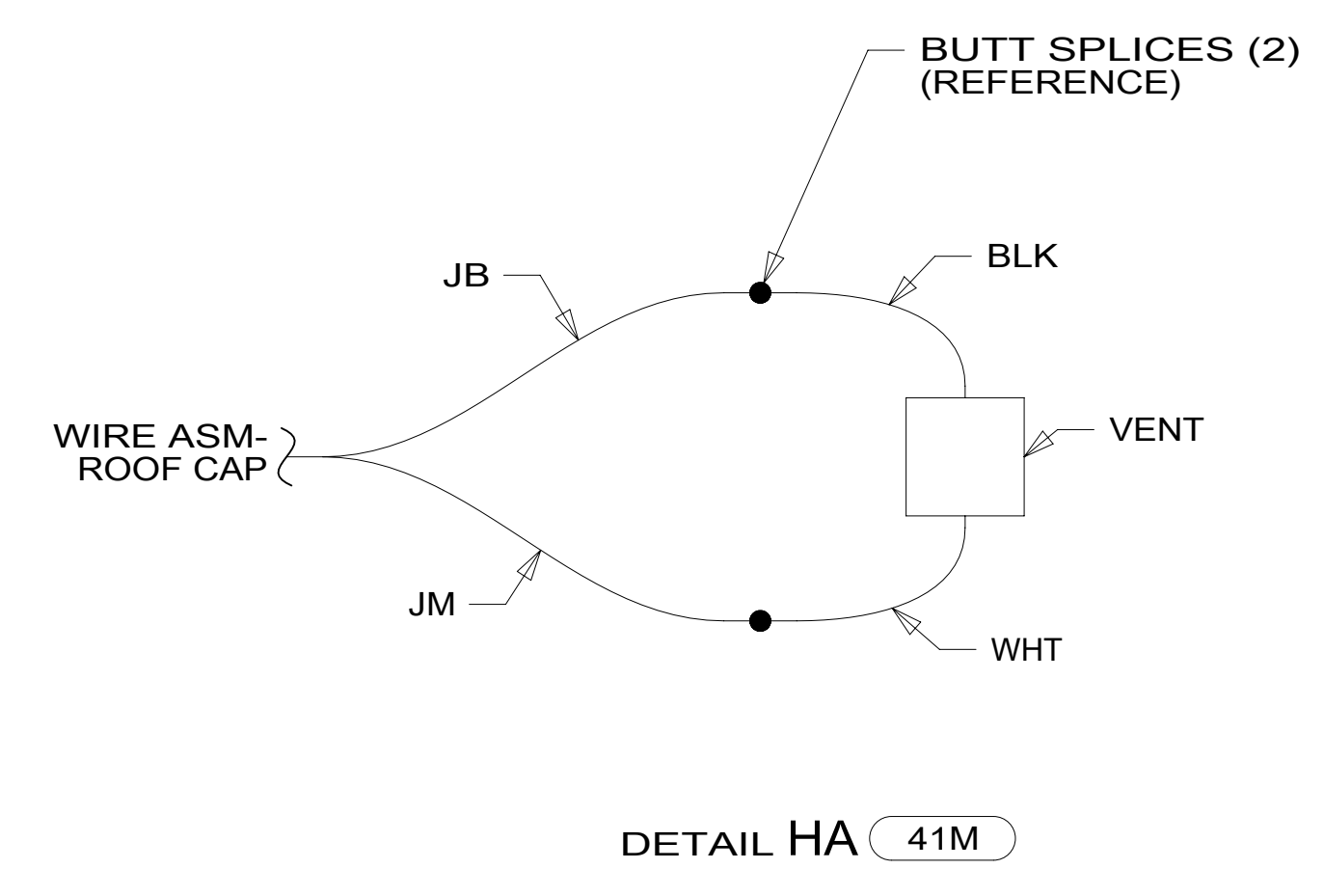
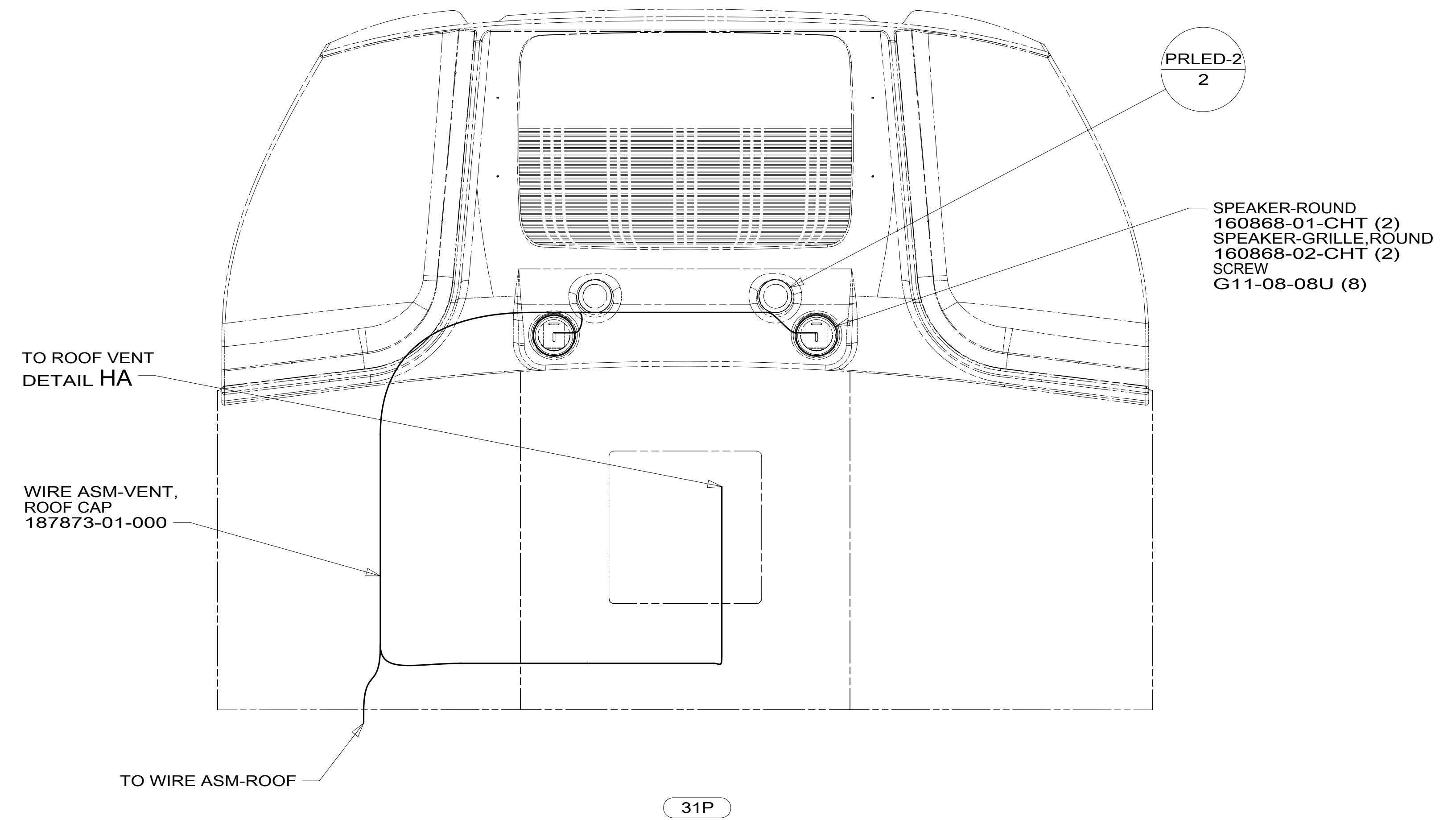
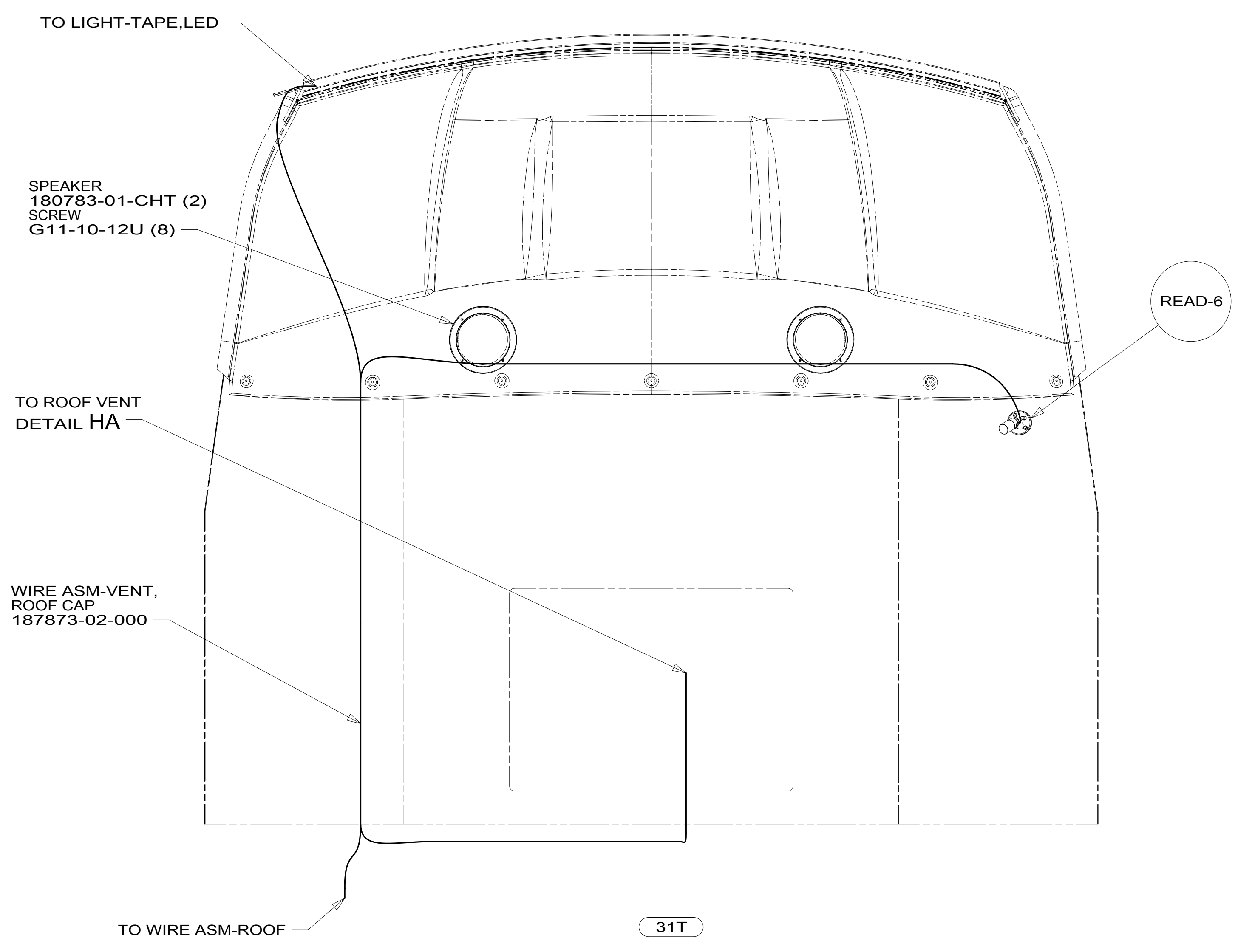
265 CODES/STANDARDS-CSA/CMVSS
1B1 CODES/STANDARDS USA

FOR ELECTRICAL TORQUE SPECIFICATIONS SEE DWG NO. 128783-01-000

X-X FOR ELECTRICAL CALLOUTS SEE DWG NO. 121339-01-000

DESCRIPTION:	1B1 265	
WIRING INSTL-BODY, 12V		
SHEET:	ITEM/PART NO:	REV
7 OF 8	000178019 / 30230901000	

8 7 6 5 4 3 2 1



- 31T FRONT CAP W/BED
- 31P FRONT CAP W/O BED
- 41M VENT-POWER VENTILATOR
- 316 SKYLIGHT/ROOF VENT, POWER
- 265 CODES/STANDARDS-CSA/CMVSS
- 1B1 CODES/STANDARDS USA

FOR ELECTRICAL TORQUE SPECIFICATIONS SEE DWG NO. 128783-01-000

FOR ELECTRICAL CALLOUTS SEE DWG NO. 121339-01-000

DESCRIPTION:		1B1 265	
WIRING INSTL-BODY, 12V			
SHEET:	ITEM/PART NO.:	REV:	
8 OF 8	000178019 / 30230901000		

8 7 6 5 4 3 2 1 17-Jan-2017