

AMPLIFIER-PREMIUM AUDIO
000013490 / 312664-01-000
WIRE ASM-AMP
194532-01-000
194532-02-000
FASTENER-DUAL LOCK
85774-01-000 (80 MM)(2)
85774-02-000 (80 MM)(2)

2 PIN HSG
TO WIRE ASM-ROOF

3 PIN HSG
TO WIRE ASM-SIDEWALL

TO SUNVISOR SHADE
(3) BUTT SPLICES
JJX-BRN
HHK-BLK
HHL-BLK/GRY

3 PIN HSG
TO WIRE ASM-SIDEWALL

TO SIDEWALL

3 PIN HSG TO
WIRE ASM-ROOF

5 PIN HSG
TO WIRE ASM-ROOF

6 PIN HSG
TO WIRE ASM-SIDEWALL

571 SPEAKER
171547-01-CHT (2)
SCREW
G11-08-20U (8)
SPEAKER
193631-01-000 (2)
SCREW
G11-08-20U (8)

2 PIN HSG TO
CLEARANCE LIGHTS

WIRING TO OUTSIDE

LABEL-WARNING, PINCH HAZARD
137260-02-CHT

3 70D RADIO-KIT, SXM
000111632 / 321635-01-000

GROMMET
23942-01-000 (2)

FA

ALARM-JACKS DOWN
160876-01-000

WIRE ASM-IP, MAIN
301286-01-000

6 PIN HOUSING
TO LEFT MIRROR

USB CHARGER-DUAL, DC
188312-01-000
DETAIL AA

BRACKET-RELAY PANEL
145448-01-CHT
SCREW
G67-10-08U (4)

12V BREAKER PANEL
DETAIL CA

PANEL ASM
145063-08-CHT
SCREW
G67-06-10U (6)

DOOR ASM
145066-03-CHT
SCREW
G67-06-10U (6)
SCREW
G67-10-08U (4)

BOX ASM-SPEAKER
000175453 / 302121-01-XXX
SGREW
G11-10-16U (4)
SPEAKER-8"
193633-01-000
SCREW
G11-08-08U (4)
GRILL
193633-02-000
PLATE-SPEAKER
194221-01-000 (2)
SCREW
G11-08-08U (8)
PIGTAIL-SUBWOOFER
193633-04-000
SEAL
123655-01-000
(360MM) (2)
SCREW
G11-10-12U (4)

57P

6 CONNECT 3-PIN HOUSINGS IN WIRE ASM-ROOF TOGETHER WITH 45D

5 CUT VISOR WIRING TO 300MM BEFORE CONNECTING.

4 USE TAPE 136748-01-000 TO SECURE WIRES IN A-POST.

3 WIRE TIE TO RADIO WIRING.

2. USE SEAL-TRIM 113452-01-000 TO PROTECT WIRES FROM SHARP EDGES.

1. SEE WIRING INSTL-CHASSIS FOR ADDITIONAL INFORMATION.

NOTES:

- 571 RADIO SPEAKERS
- 57P RADIO SPEAKERS-PREMIUM SOUND
- 45D LOFT BED - WITHOUT
- 70D RADIO - SATELLITE SIRIUSXM
- 265 CODES/STANDARDS-CSA/CMVSS
- 1B1 CODES/STANDARDS USA

WINNEBAGO COPYRIGHT 2016 WINNEBAGO INDUSTRIES, INC.	
DSNR:	ALL DIMENSIONS ARE IN MILLIMETERS
DIFTR:	
UNSPECIFIED TOLERANCES:	MATERIAL:
WHOLE DIM (X) : 3	
ONE-PLACE (X.X) : 1.5	
TWO-PLACE (X.XX) : 0.50	
ANGLE : 1°	
REFER TO ES0018 FOR FASTENER TIGHTENING GUIDELINES	WEIGHT: (LBS) FIRST USED:
	17 L-SER
DESCRIPTION: WIRING INSTL-FRONT END	
SHEET: 1 OF 10	ITEM/PART NO: 000177419 / 30128201000
REF:	REV: 1 28-Jun-2017

FOR ELECTRICAL TORQUE SPECIFICATIONS SEE DWG NO. 128783-01-000

FOR ELECTRICAL CALLOUTS SEE DWG NO. 121339-01-000

X-X

WIRE ASM-IP,MAIN

LABEL-CB PREP OPTION
104678-01-000

CB POWER PROVISION
YELLOW +12V
WHITE GROUND
COAX ANTENNA
(SEE REVERSE SIDE ALSO)

WHT YEL
TO CUSTOMERS
CB RADIO

DETAIL BB 579

1 2 PIN HOUSING
(2) BUTT SPLICES

RING TERMINALS
TO GROUND STUD

(2) BUTT SPLICES
TO CB PREP
DETAIL BB

TO WIRE ASM-RADIO
DETAIL JA

2 & 6 PIN HOUSINGS
TO LEFT MIRROR

BUTT SPLICE
SPADE TERMINAL
TO 12V RCP

TO SWITCHES
DETAIL DB

2 & 6 PIN HOUSINGS
TO HEATER/AC CONTROLS

TO SWITCHES

DETAIL BA

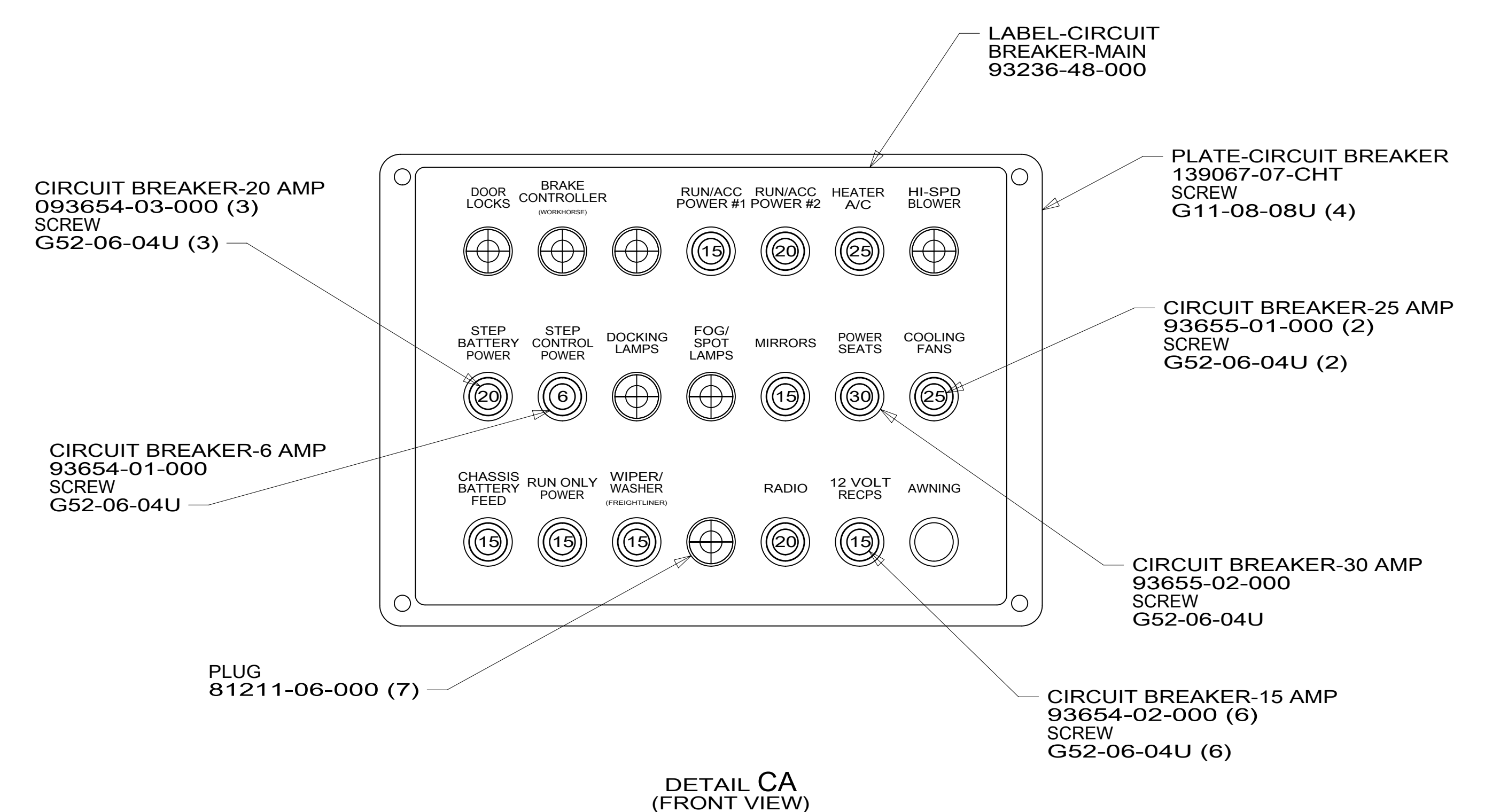
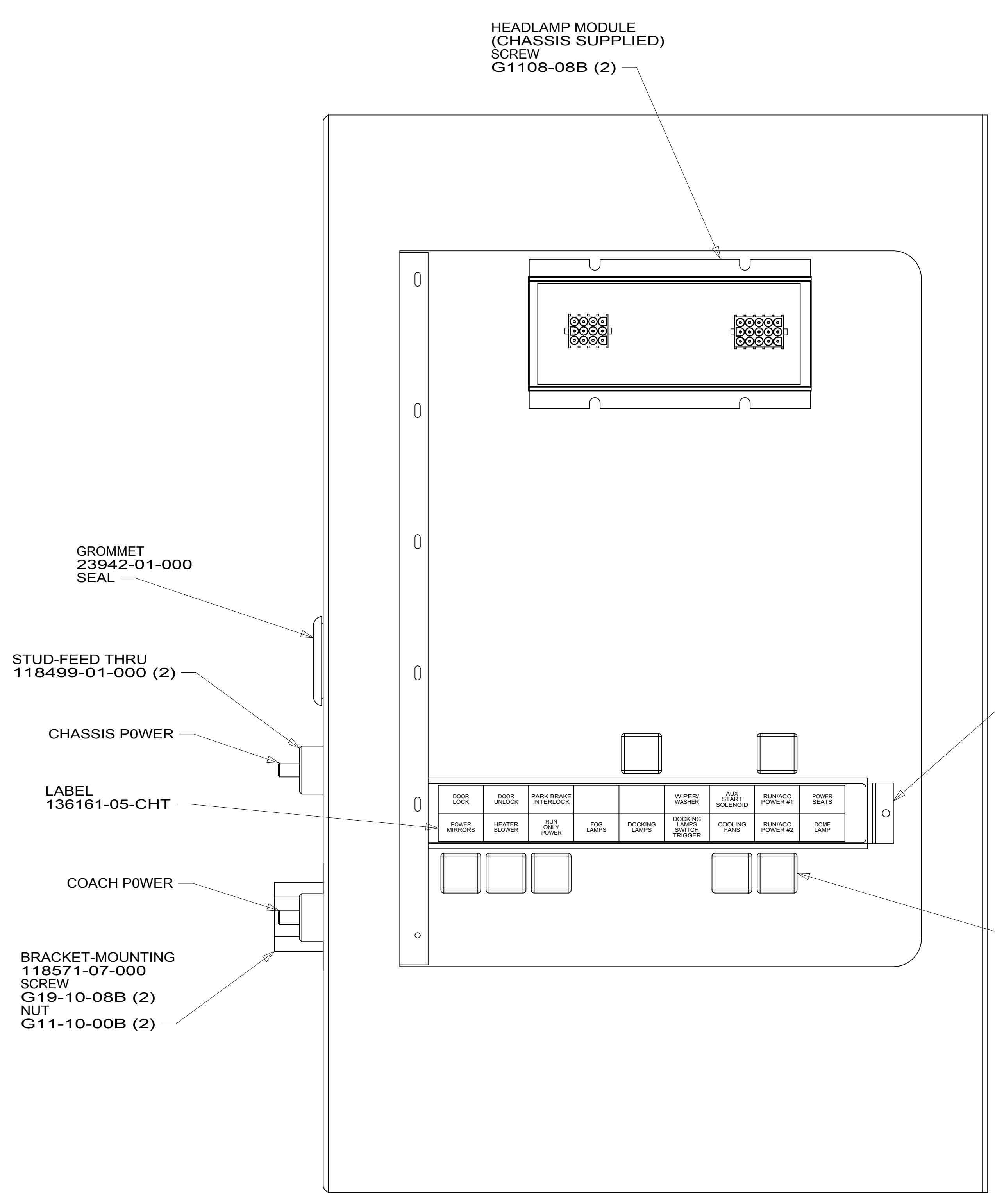
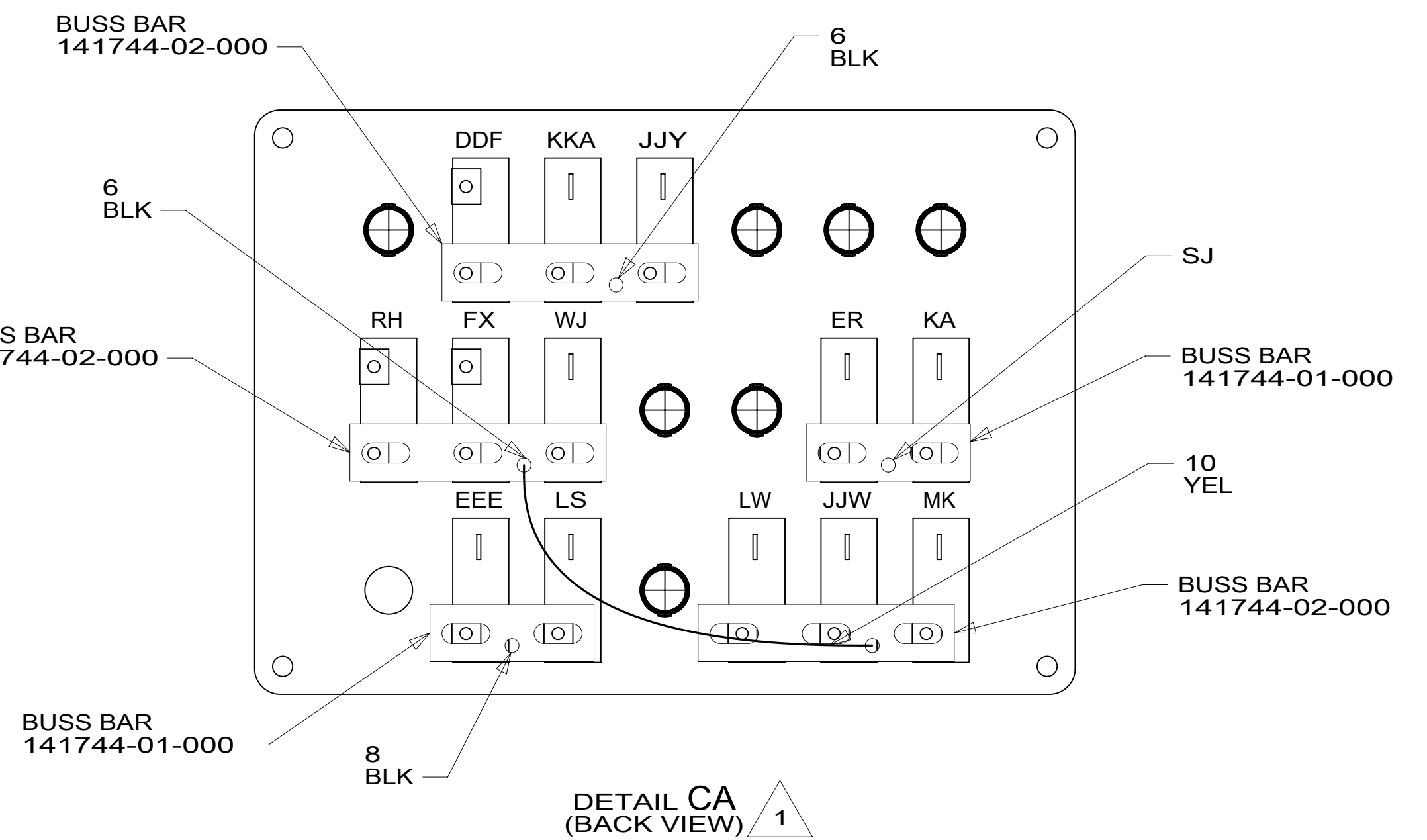
- 579 RADIO - CB WIRE PREP
- 265 CODES/STANDARDS-CSA/CMVSS
- 1B1 CODES/STANDARDS USA

2 EDGE OF LABEL TO HANG JUST BELOW BOTTOM OF DASH.
 1 ROUTE WIRES UP LEFT A-PILLAR.

FOR ELECTRICAL
TORQUE
SPECIFICATIONS
SEE DWG NO.
128783-01-000

X-X FOR
ELECTRICAL
CALLOUTS
SEE DWG NO.
121339-01-000

DESCRIPTION:		1B1 265	
WIRING INSTL-FRONT END			
SHEET:	ITEM/PART NO:	REV	
2 OF 10	000177419 / 30128201000		



- NOTES:
- 3 SEAL ALL SCREWS ON EXTERIOR SIDE OF COMPARTMENT. REFER TO SEALANT MANUAL.
 - 2 CIRCUIT FFD IS PART OF WIRE ASM-CHASSIS.
 - 1 CIRCUITS LABELED ON BREAKER ARE FROM WIRE ASM-IP, MAIN, UNLESS OTHERWISE SPECIFIED.

265 CODES/STANDARDS-CSA/CMVSS
 1B1 CODES/STANDARDS USA

FOR ELECTRICAL TORQUE SPECIFICATIONS SEE DWG NO. 128783-01-000

X-X FOR ELECTRICAL CALLOUTS SEE DWG NO. 121339-01-000

DESCRIPTION: WIRING INSTL-FRONT END		
SHEET: 3 OF 10	ITEM/PART NO: 000177419 / 30128201000	REV

D

C

B

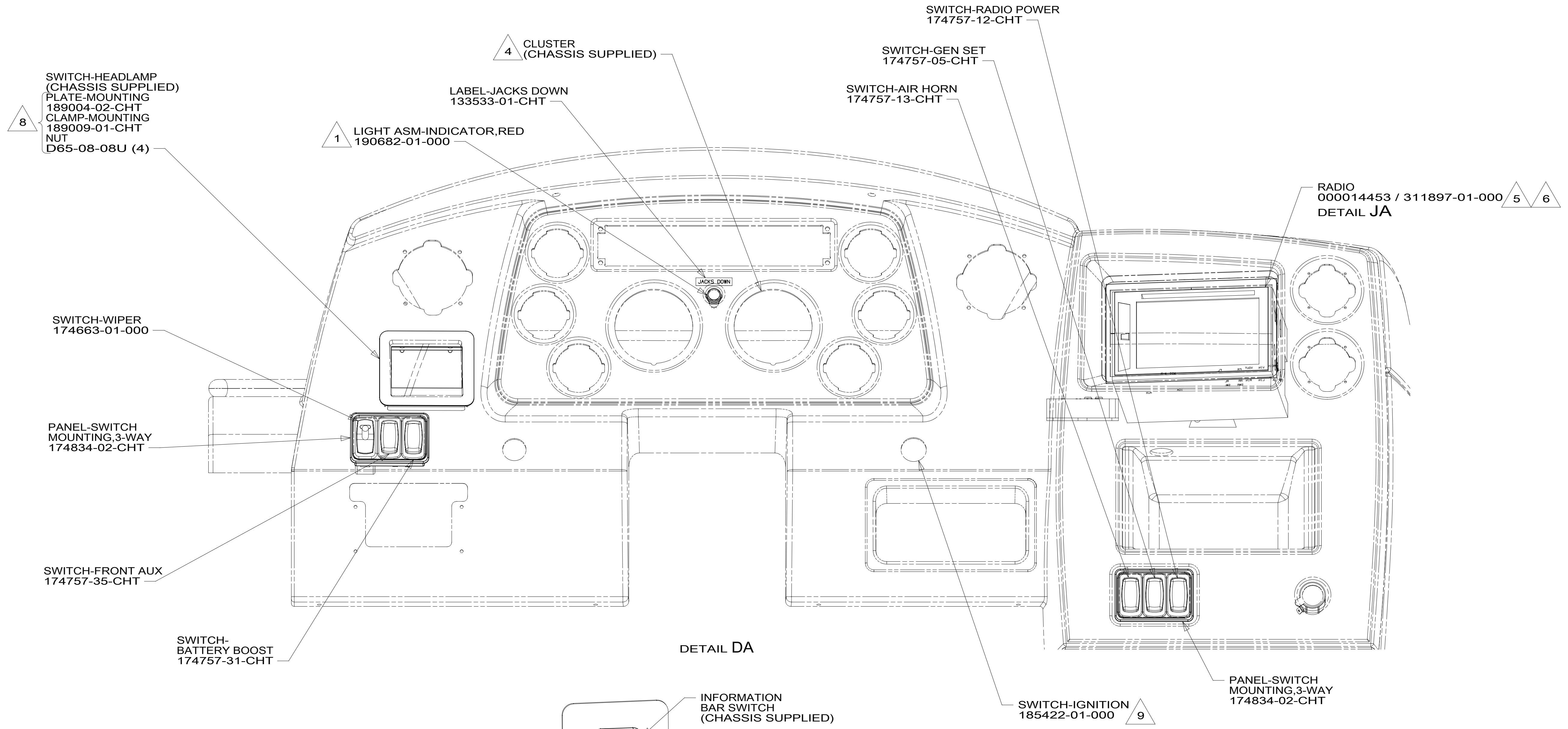
A

D

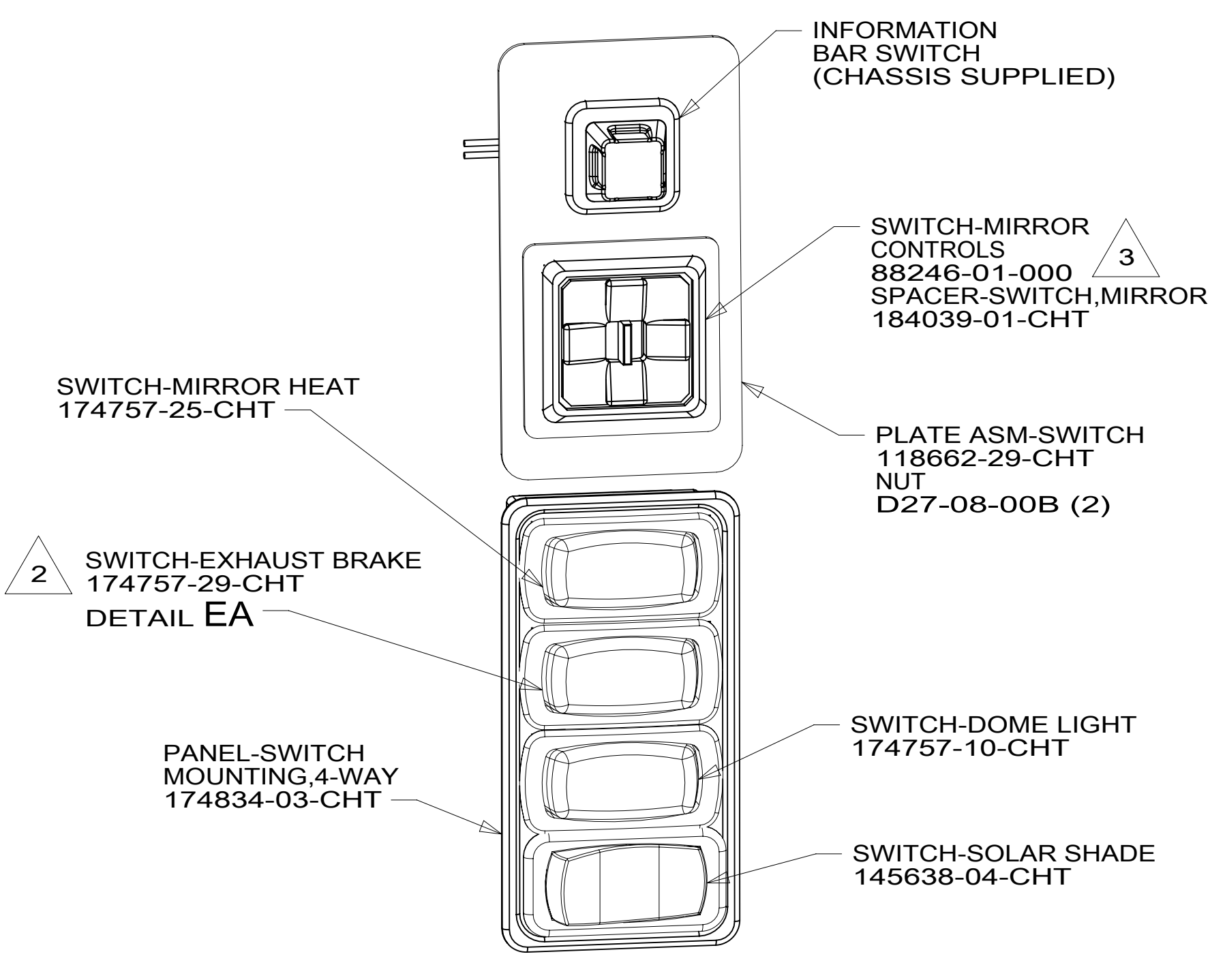
C

B

A



- 9 REPLACE CHASSIS SUPPLIED IGNITION SWITCH.
- 8 CHASSIS SUPPLIED ROCKER SWITCHES. DOME LAMP SWITCH NOT USED. SEE DETAIL DC FOR SWITCH POSITION.
7. APPLY TAPE 8363-01-000 AS NECESSARY TO SECURE NON-LOCKING CONNECTIONS.
- 6 ATTACH TO RADIO WITH SCREW SUPPLIED WITH RADIO.
- 5 PLUG USB CABLE INTO LEAD ON BACK OF RADIO MARKED 'USB' ROUTE CABLE TO DASH POCKET BELOW RADIO.
- 4 SEE SHEET 5 FOR GAUGE PLACEMENT.
- 3 MOUNT SWITCH SO WHEN ACTUATOR IS PUSHED LEFT, THE LETTER L IS SHOWING.
- 2 CONNECT TO MATING LABELED CONNECTOR ON CHASSIS SUPPLIED WIRING.
- 1 CONNECT POSITIVE WIRE TO TERMINAL MARKED WITH A "+", YEL-WINNEBAGO WIRING RED-HWH WIRING



FOR ELECTRICAL TORQUE SPECIFICATIONS SEE DWG NO. 128783-01-000

X-X FOR ELECTRICAL CALLOUTS SEE DWG NO. 121339-01-000

265 CODES/STANDARDS-CSA/CMVSS
1B1 CODES/STANDARDS USA

DESCRIPTION:	1B1 265	
WIRING INSTL-FRONT END		
SHEET:	ITEM/PART NO:	REV
4 of 10	000177419 / 30128201000	

8

7

6

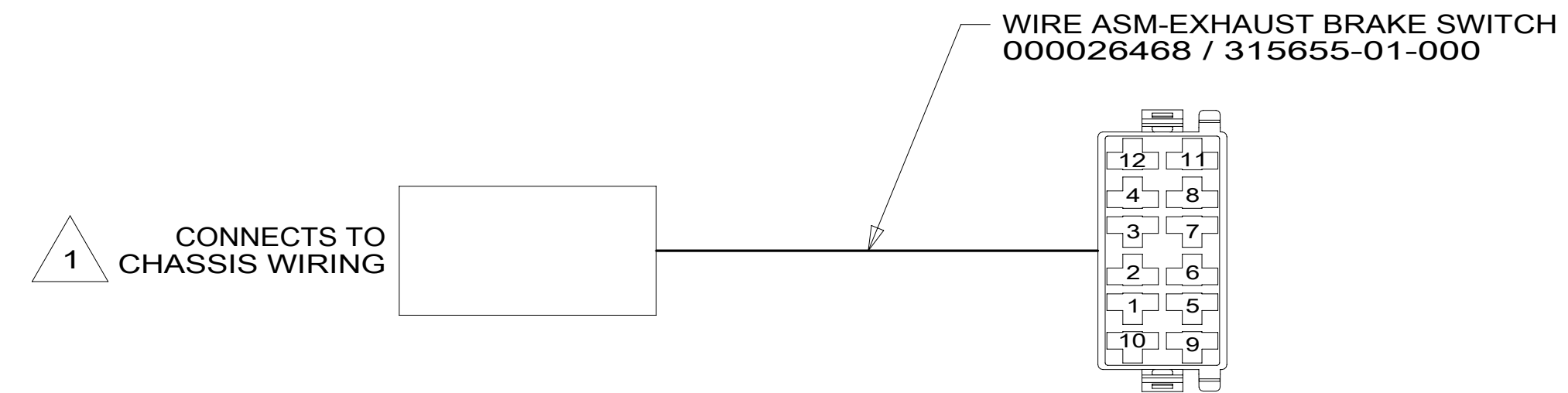
5

4

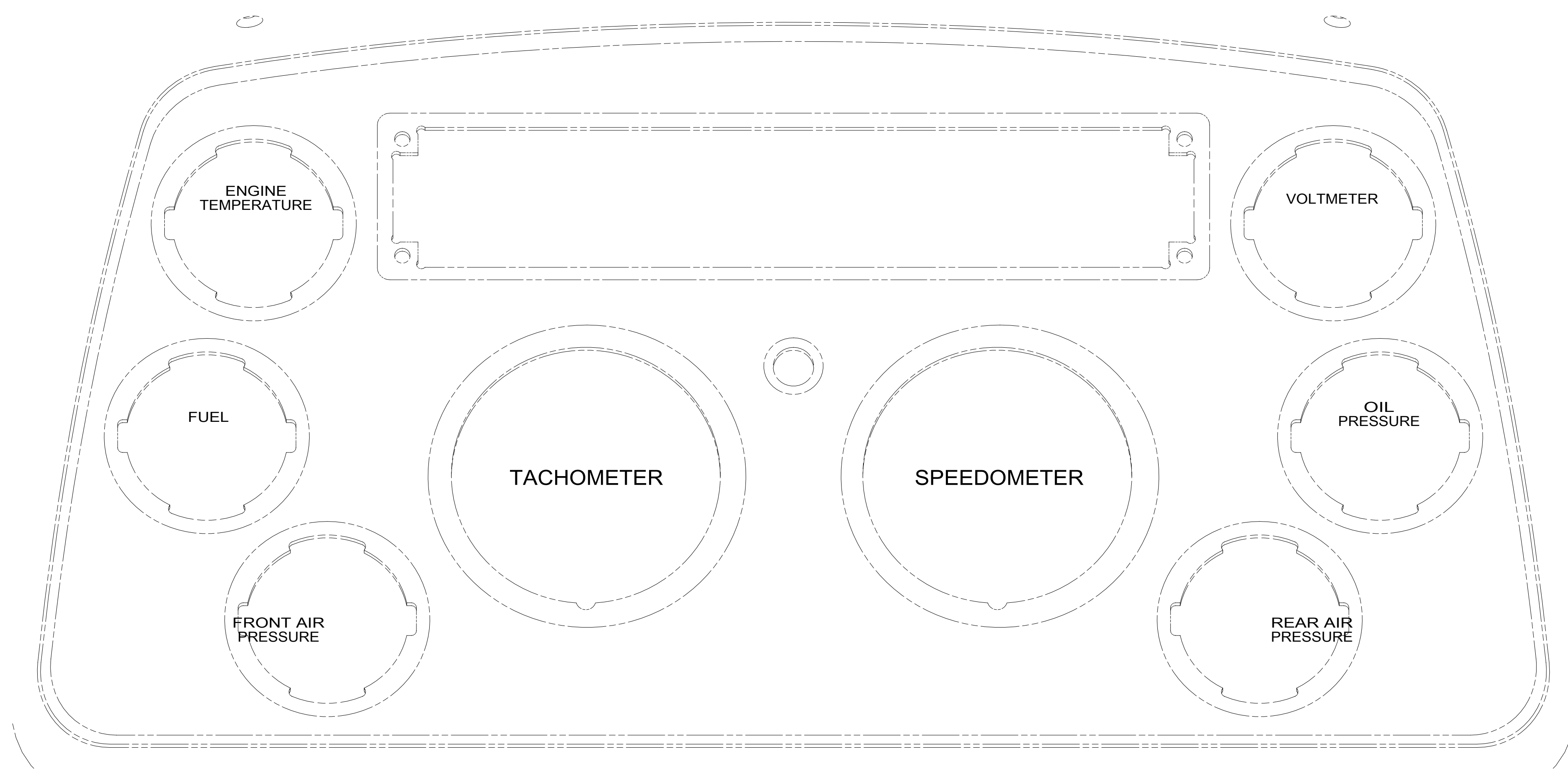
3

2

1



DETAIL EA



FREIGHTLINER CLUSTER LOCATION

1 CHASSIS WIRING HAS MATING CONNECTOR AND IS LABELED "ENGINE BRAKE SWITCH"

NOTES:

FOR ELECTRICAL TORQUE SPECIFICATIONS SEE DWG NO. 128783-01-000

X-X FOR ELECTRICAL CALLOUTS SEE DWG NO. 121339-01-000

- 265 CODES/STANDARDS-CSA/CMVSS
- 1B1 CODES/STANDARDS USA

1B1 265	
DESCRIPTION: WIRING INSTL-FRONT END	
SHEET: 5 OF 10	ITEM/PART NO: 000177419 / 30128201000
REV	

8

7

6

5

4

3

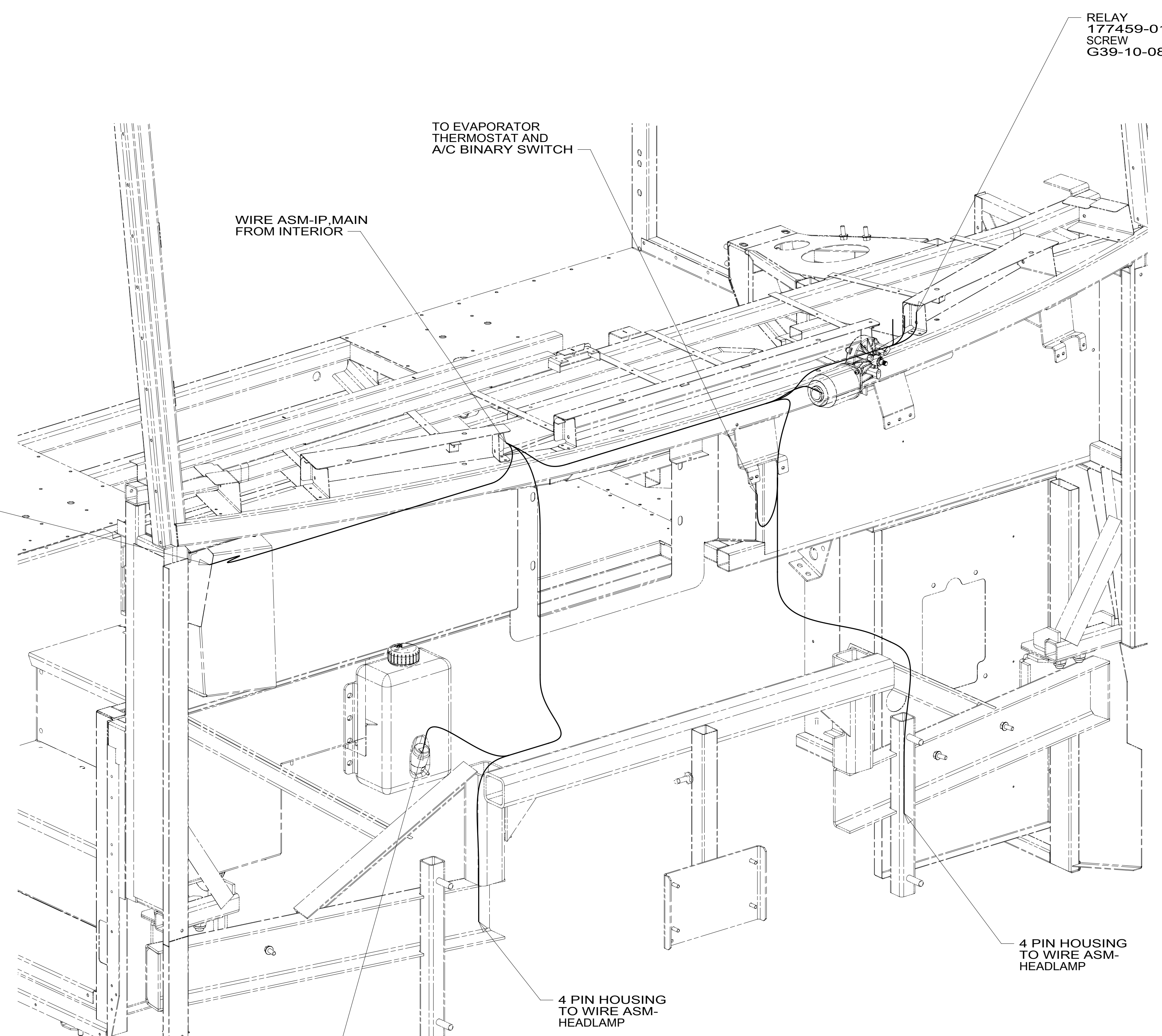
2

1

28-Jun-2017

8 7 6 5 4 3 2 1

D
C
B
A



VIEW FA

265 CODES/STANDARDS-CSA/CMVSS
 1B1 CODES/STANDARDS USA

FOR ELECTRICAL TORQUE SPECIFICATIONS SEE DWG NO. 128783-01-000

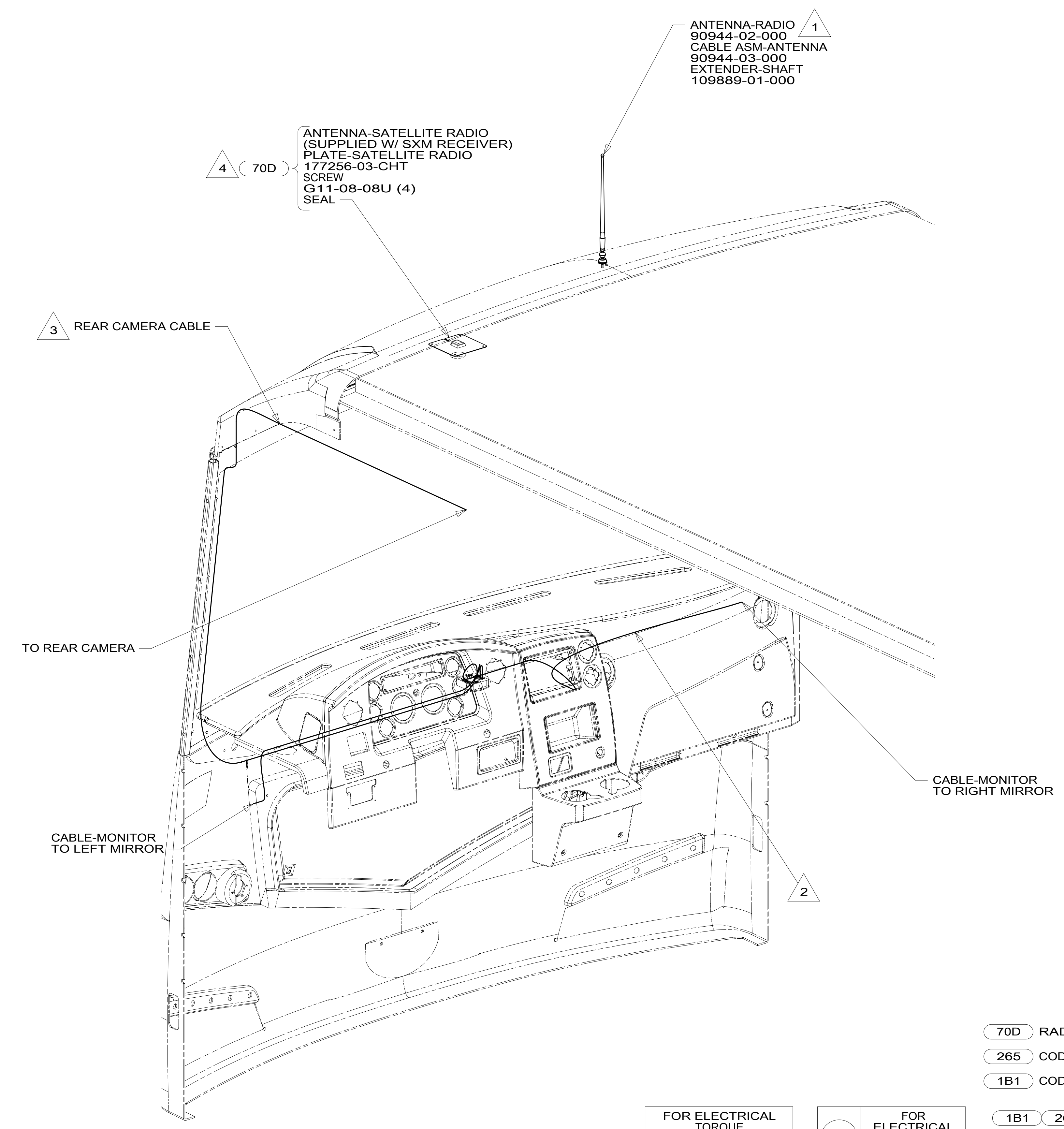
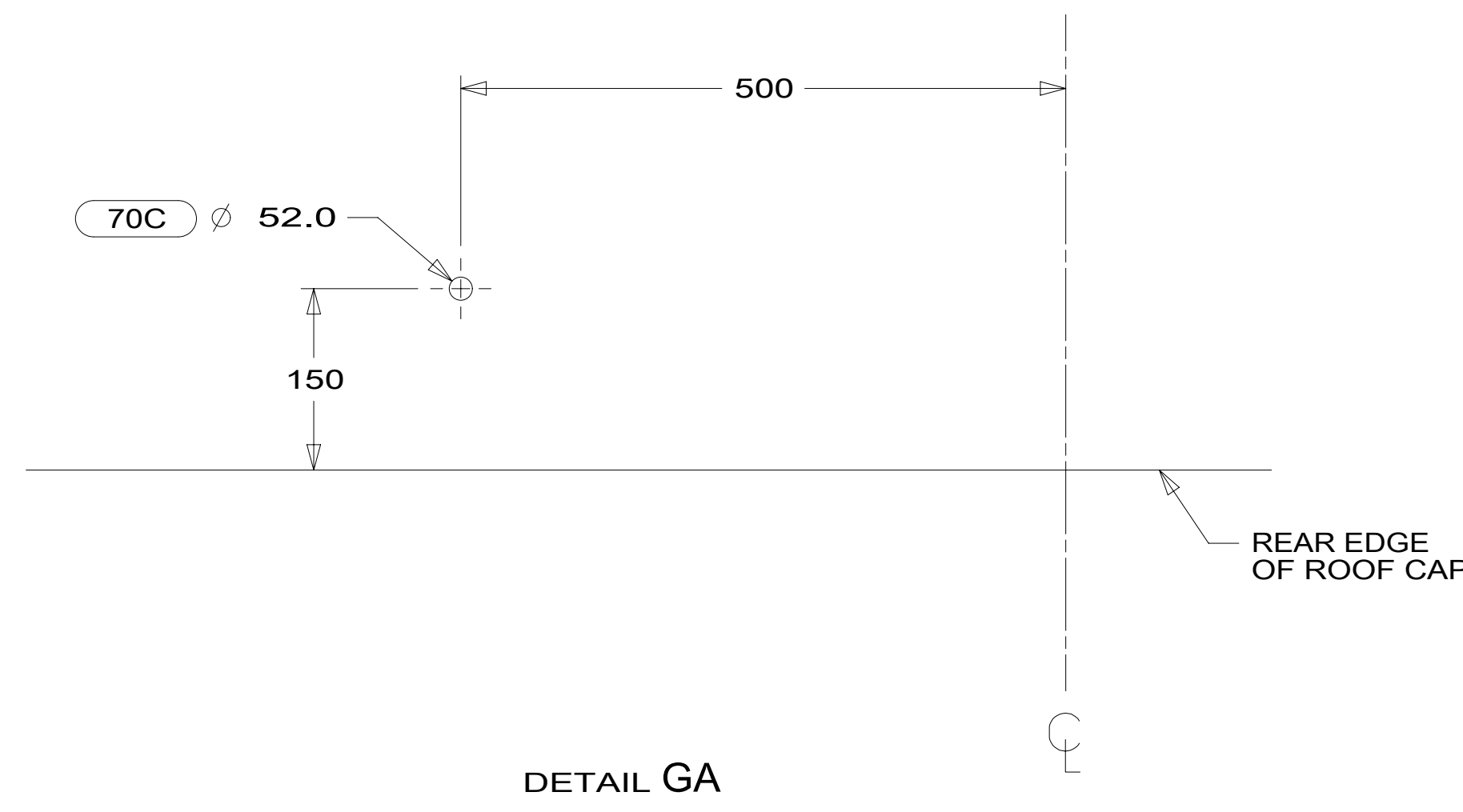
X-X FOR ELECTRICAL CALLOUTS SEE DWG NO. 121339-01-000

1B1 265
 DESCRIPTION:
WIRING INSTL-FRONT END

SHEET: 6 OF 10 ITEM/PART NO.: 000177419 / 30128201000 REV

8 7 6 5 4 3 2 1 28-Jun-2017

8 7 6 5 4 3 2 1



- NOTES:
- 4 MOUNT ANTENNA SUCH THAT BASE IS SQUARE WITH REAR OF ROOF CAP AND COVERS HOLE IN ROOF.
 - 3 RUN CABLE UP A-PILLAR THRU LEFT HAND COVE TO REAR OF UNIT.
 - 2 ROUTE CABLE TO EXTERIOR THRU HOLE IN PANEL ALONG WITH HEATER WIRING TO RIGHT CAMERA IN MIRROR.
 - 1 SEAL AROUND ANTENNA BASE.

- 70D RADIO - SATELLITE SIRIUSXM
- 265 CODES/STANDARDS-CSA/CMVSS
- 1B1 CODES/STANDARDS USA

FOR ELECTRICAL TORQUE SPECIFICATIONS SEE DWG NO. 128783-01-000

FOR ELECTRICAL CALLOUTS SEE DWG NO. 121339-01-000

DESCRIPTION:	
WIRING INSTL-FRONT END	
SHEET:	ITEM/PART NO. REV
7 OF 10	000177419 / 30128201000

8 7 6 5 4 3 2 1 28-Jun-2017

8

7

6

5

4

3

2

1

D

D

C

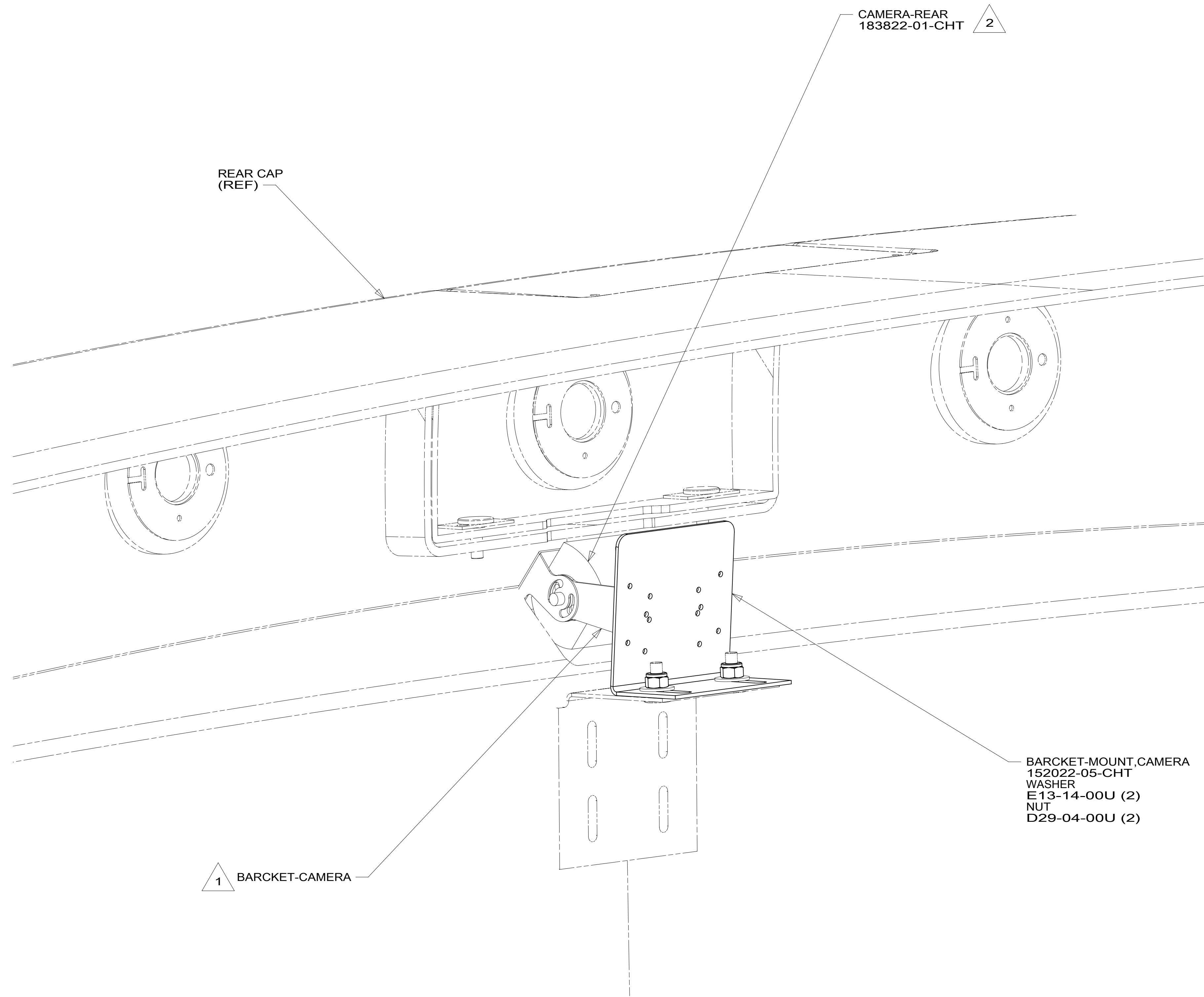
C

B

B

A

A



2 ALIGN CAMERA IN CENTER OF SHROUD OPENING AND ADJUST SO BACKWALL IS JUST VISIBLE.

1 PARTS SUPPLIED WITH REAR CAMERA, VISOR NOT USED.

NOTES:

265 CODES/STANDARDS-CSA/CMVSS

1B1 CODES/STANDARDS USA

1B1 265

FOR ELECTRICAL TORQUE SPECIFICATIONS SEE DWG NO. 128783-01-000

X-X FOR ELECTRICAL CALLOUTS SEE DWG NO. 121339-01-000

DESCRIPTION: WIRING INSTL-FRONT END

SHEET: 8 OF 10 ITEM/PART NO: 000177419 / 30128201000 REV

8

7

6

5

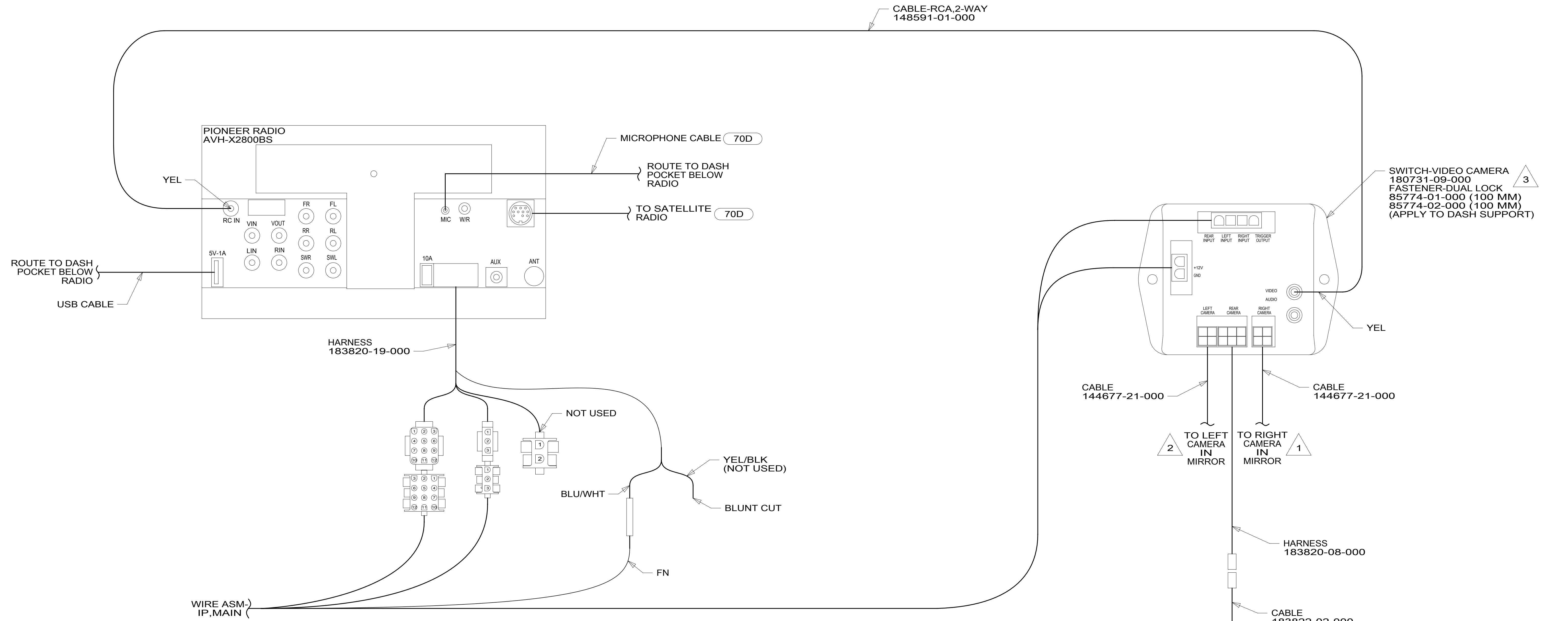
4

3

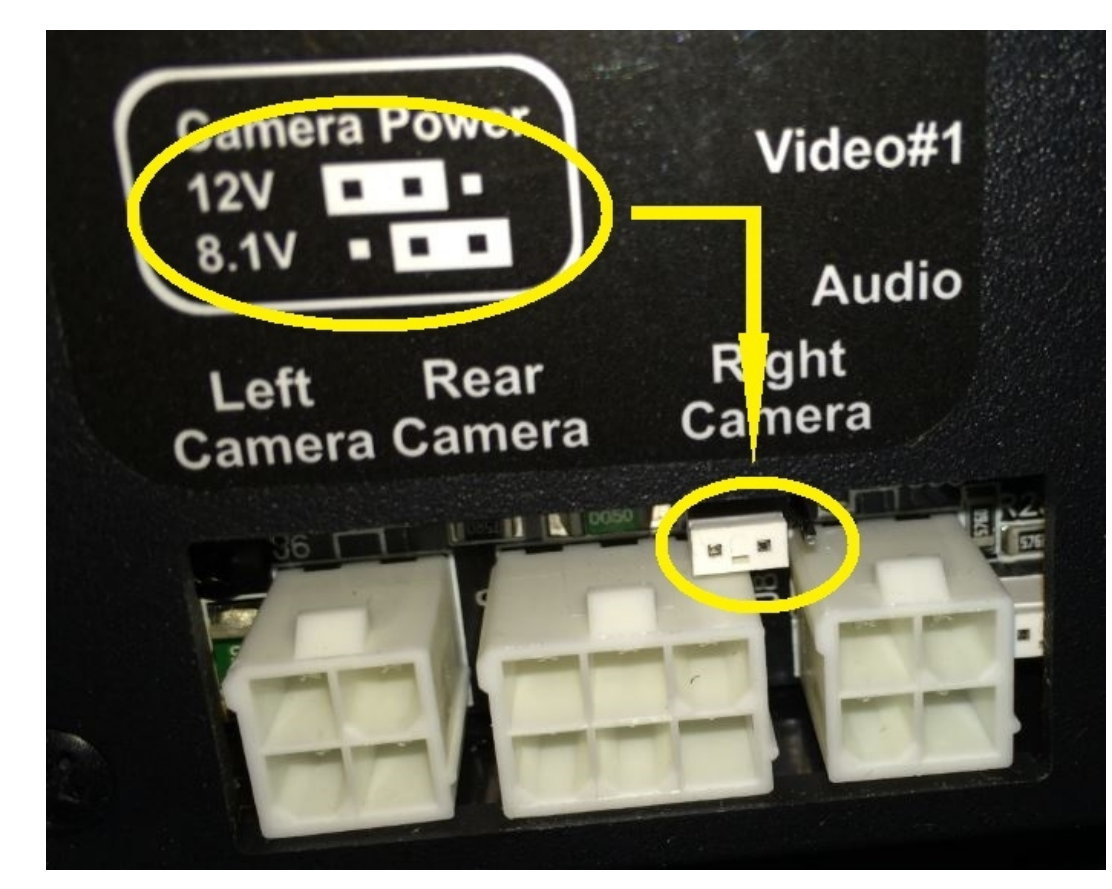
2

1

28-Jun-2017



DETAIL JA



DETAIL JB

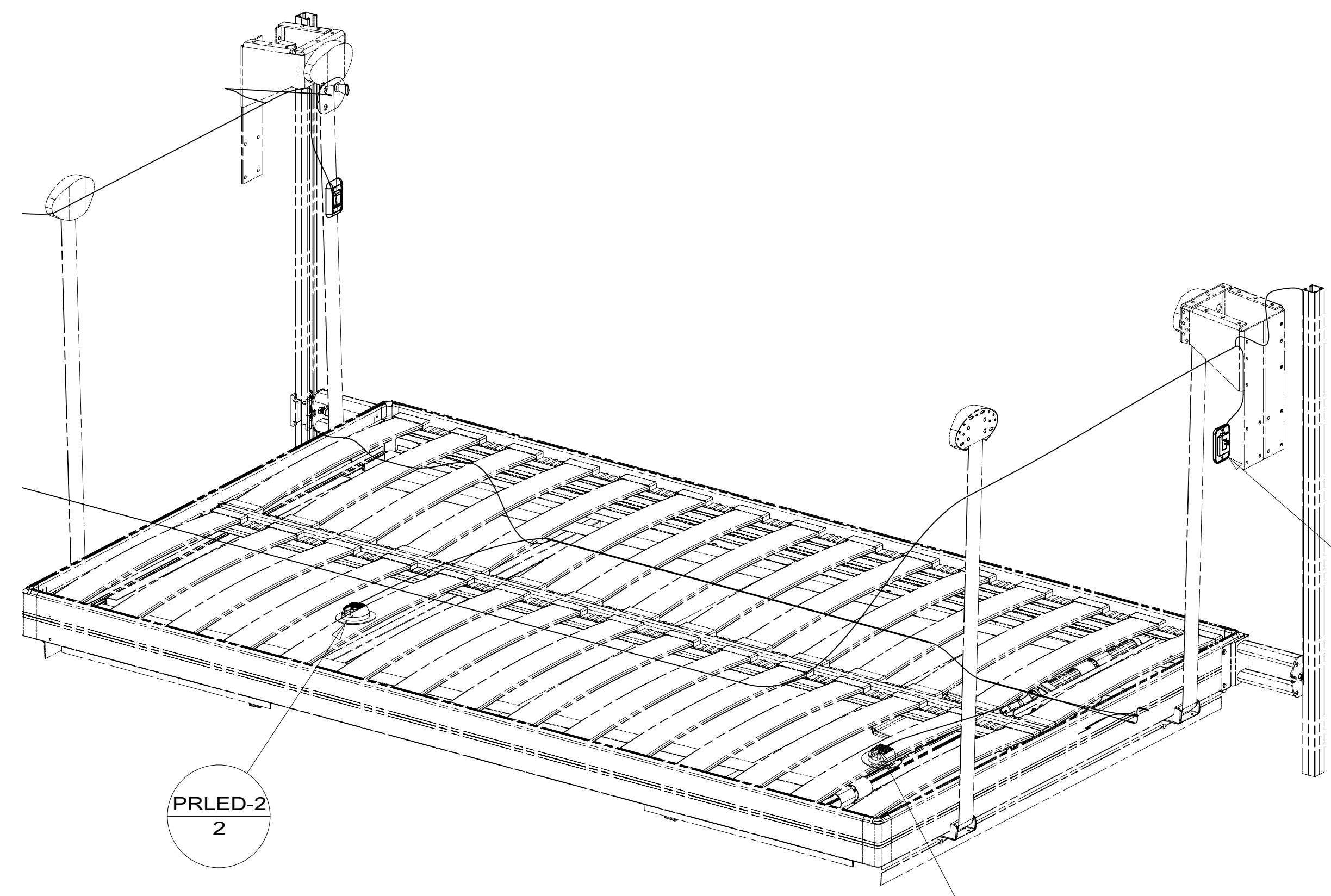
- NOTES:
- 3 ENSURE CAMERA POWER JUMPER IS IN 12V POSITION. MOVE TO 12V POSITION IF NECESSARY. SEE DETAIL JB.
 - 2 MARK LEFT CABLE WITH YELLOW TAPE 900000-07-000 NEXT TO CONNECTOR.
 - 1 MARK RIGHT CABLE WITH WHITE TAPE 900000-08-000 NEXT TO CONNECTOR.

- 70D RADIO - SATELLITE SIRIUSXM
- 265 CODES/STANDARDS-CSA/CMVSS
- 1B1 CODES/STANDARDS USA

FOR ELECTRICAL TORQUE SPECIFICATIONS SEE DWG NO. 128783-01-000

FOR ELECTRICAL CALLOUTS SEE DWG NO. 121339-01-000

DESCRIPTION:	
WIRING INSTL-FRONT END	
SHEET: 9 OF 10	ITEM/PART NO: 000177419 / 30128201000
REV 1 28-Jun-2017	

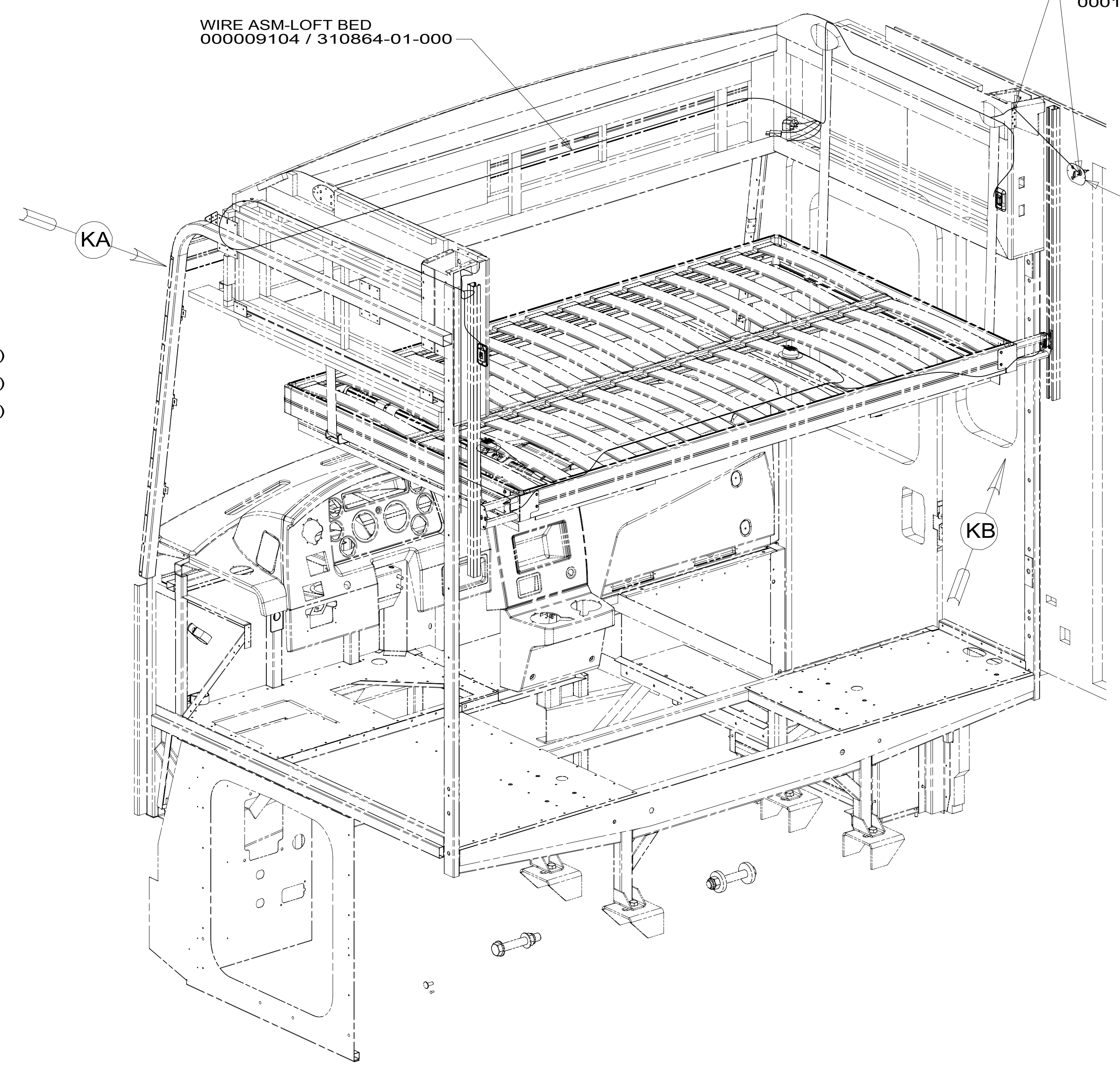


PRLED-2
2

DETAIL KA

- SWITCH-ROCKER
135740-07-CHT (2)
- SWITCH-BASE
135741-01-CHT (2)
- SWITCH-BEZEL
135742-01-CHT (2)
- SCREW
G11-08-08U (4)

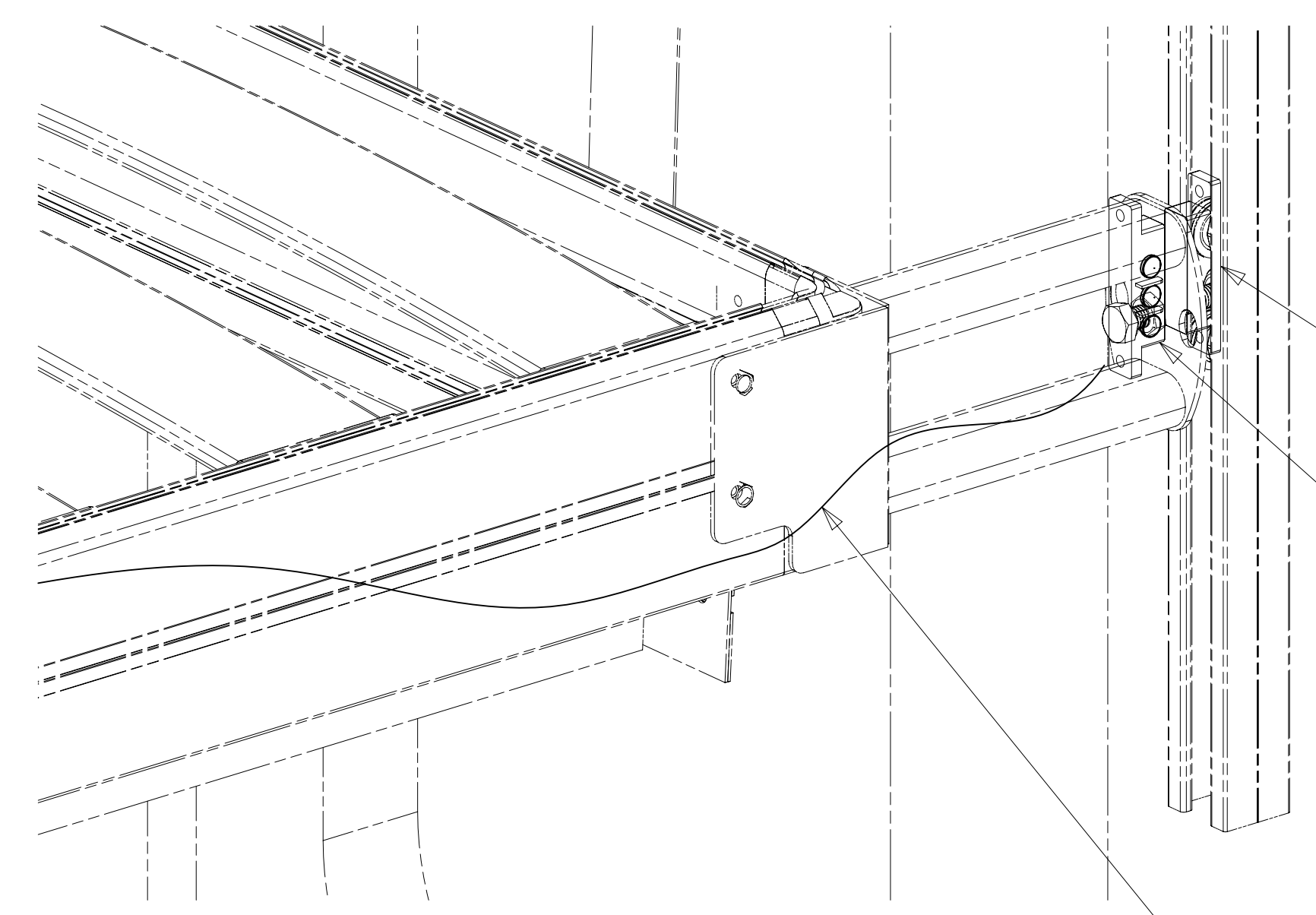
TO WIRE ASM-BED LIFT



WIRE ASM-LOFT BED
000009104 / 310864-01-000

WIRE ASM-LOFT BED SWITCH
000122806 / 323456-01-000

SWITCH-CONTROL, LOFTBED, TOUCH
189056-01-000
SCREW
076790-05-000 (2)

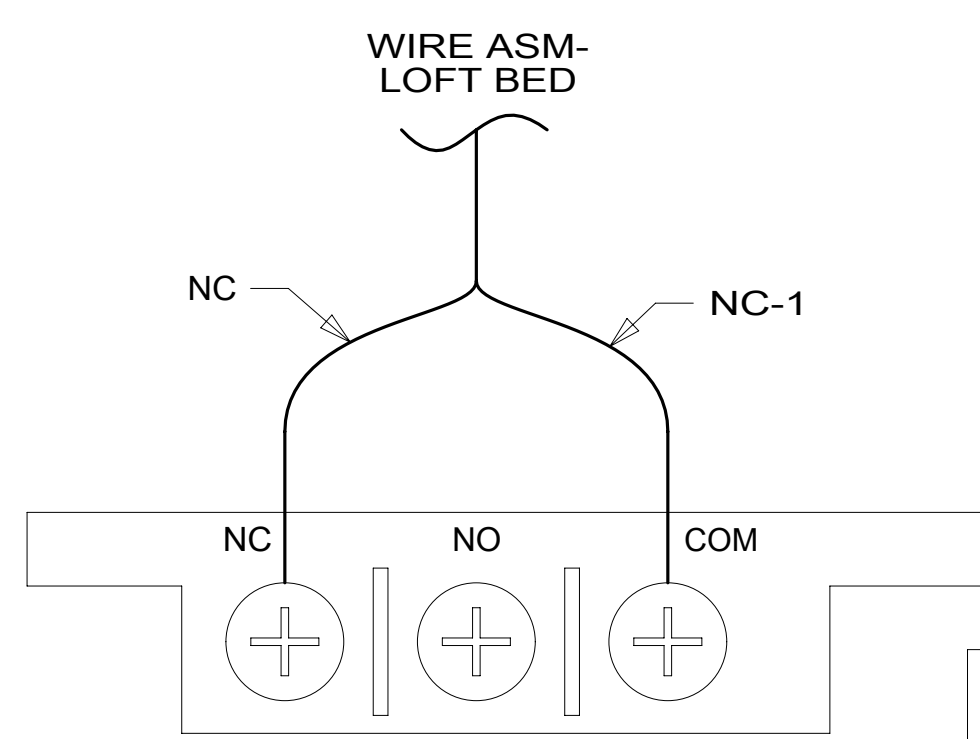


SCREW
076790-08-000 (2)

- SWITCH-MAGNET, SURFACE MOUNT
187753-01-CHT
- SCREW
G18-08-10U (2)
- NUT
D65-08-00U (2)
- SCREW
(SUPPLIED WITH SWITCH)
- BRACKET
000005519 / 312324-01-CHT
- TIE-WIRE
008343-01-000 (2)

WIRE ASM-LOFT BED EXTENSION
000004364 / 312116-01-000

DETAIL KB
(SWITCH COVER NOT SHOWN)



DETAIL KC

2 WIRE ROUTED THROUGH ROUTED PATH IN SIDEWALL BETWEEN ARROWS.

1 ATTACH THE MAGNET WITH WIRE CONNECTIONS TO BRACKET SHOWN AND THEN ATTACH THE MAGNET WITHOUT WIRE CONNECTIONS SO IT IS DIRECTLY ACROSS FROM THE OTHER MAGNET WHEN BED IS IN THE DOWN POSITION.

SEE DETAIL KC FOR WIRING CONNECTIONS.

NOTES:

FOR ELECTRICAL TORQUE SPECIFICATIONS SEE DWG NO. 128783-01-000

X-X FOR ELECTRICAL CALLOUTS SEE DWG NO. 121339-01-000

- 45B LOFT BED
- 265 CODES/STANDARDS-CSA/CMVSS
- 1B1 CODES/STANDARDS USA

DESCRIPTION:	1B1 265 45B	
WIRING INSTL-FRONT END		
SHEET:	ITEM/PART NO:	REV
10 OF 10	000177419 / 30128201000	