

8 7 6 5 4 3 2 1

D

D

C

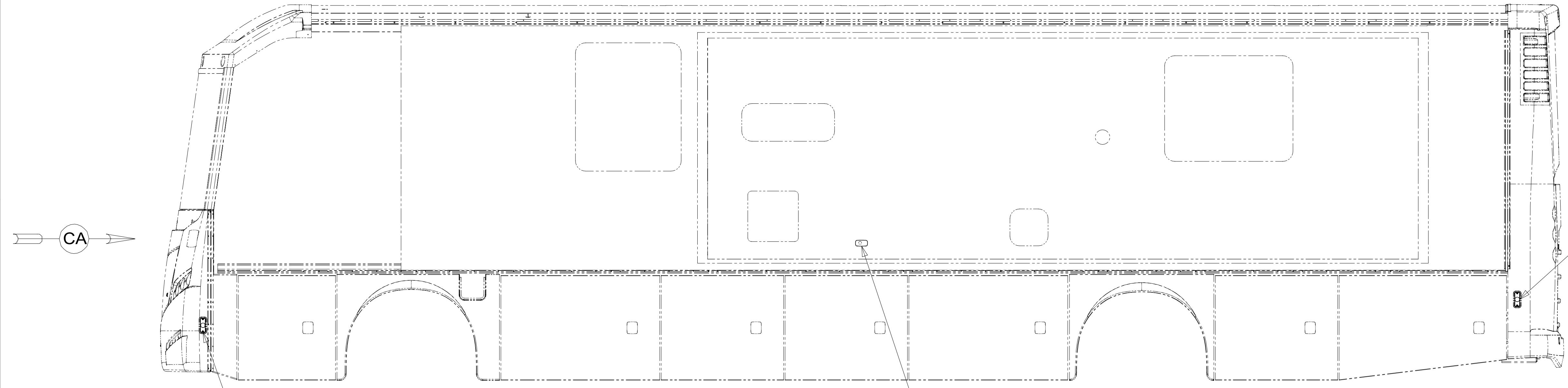
C

B

B

A

A



CA

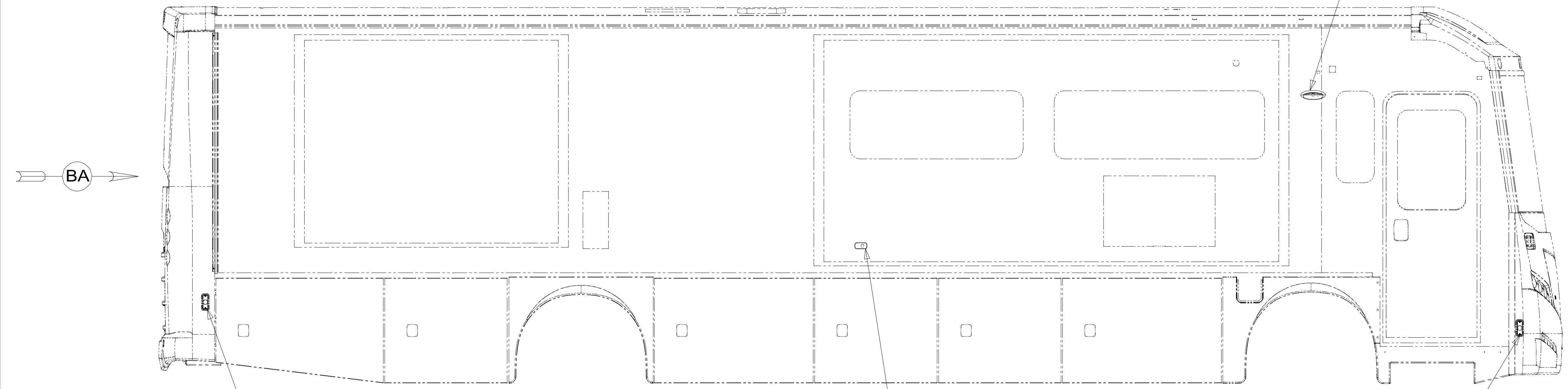
LAMP ASM-SIDEMARKER,AMBER
171195-02-000
SCREW
G11-08-12U (2)

LAMP-MARKER,W AMBER LENS,BLK
193802-03-000
SCREW
G11-08-12U (EXT) (2)
CONNECTOR
58028-01-000 (4)

LAMP ASM-MARKER,RED
171195-01-000
SCREW
G11-08-12U (2)

→

←



BA

LAMP ASM-MARKER,RED
171195-01-000
SCREW
G11-08-12U (2)

LAMP-MARKER,W AMBER LENS,BLK
193802-03-000
SCREW
G11-08-12U (EXT) (2)
CONNECTOR
58028-01-000 (4)

LAMP ASM-PORCH
191677-01-000

LAMP ASM-SIDEMARKER,AMBER
171195-02-000
SCREW
G11-08-12U (2)

←

→

8 7 6 5 4 3 2 1

265 CODES/STANDARDS-CSA/CMVSS

1B1 CODES/STANDARDS USA

1B1 265



DSNR:		ALL DIMENSIONS ARE IN MILLIMETERS	
DIFTR:		MATERIAL:	
UNSPECIFIED TOLERANCES:		WEIGHT: (LBS)	FIRST USED:
WHOLE DIM (X)	± 3		16 L36G
ONE-PLACE (X.X)	± 1.5		
TWO-PLACE (X.XX)	± 0.50		
ANGLE	± 1°		

REFER TO ES0018 FOR FASTENER TIGHTENING GUIDELINES

DESCRIPTION: **WIRING INSTL-EXTERIOR LAMPS**

SHEET: 1 OF 3 ITEM/PART NO: 000174635 / 30138201000 REV

FOR ELECTRICAL TORQUE SPECIFICATIONS SEE DWG NO. 128783-01-000

X-X FOR ELECTRICAL CALLOUTS SEE DWG NO. 121339-01-000

8

7

6

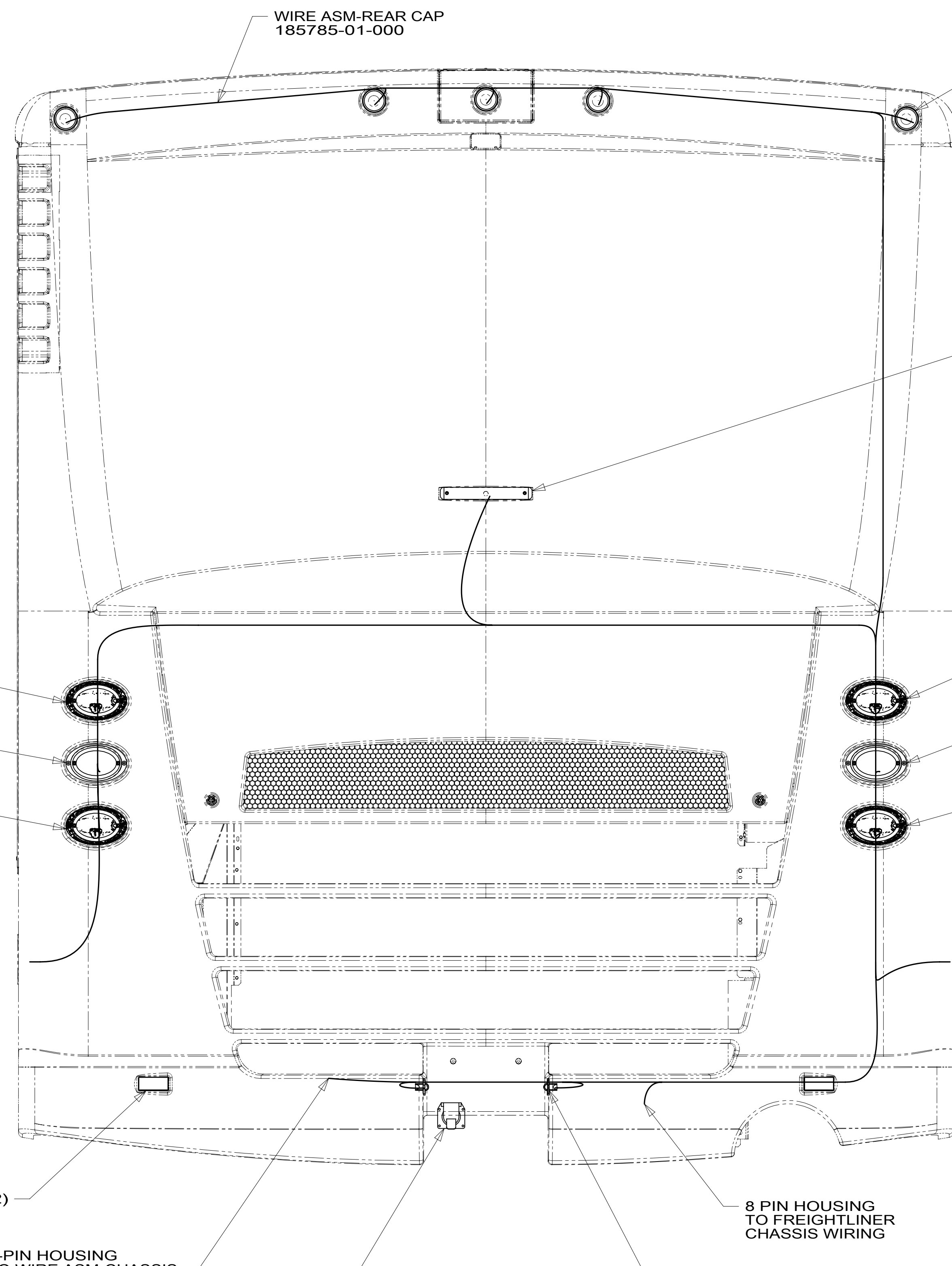
5

4

3

2

1



WIRE ASM-REAR CAP
185785-01-000

LAMP ASM-CLEARANCE,RED
138996-02-000 (5)
BRACKET-LAMP,CLEARANCE
138996-03-000 (5)
SCREW
G39-08-16U (EXT) (10)

LIGHT-THIRD BRAKE
136916-01-000
SCREW
G39-06-16U (2)

LAMP-STOP/TURN/TAIL
172560-02-000

LAMP ASM-TURN
172560-06-000

LAMP-BACKUP
172560-04-000

LAMP-STOP/TURN/TAIL
172560-01-000

LAMP ASM-TURN
172560-05-000

LAMP-BACKUP
172560-03-000

1 REFLECTOR
106646-02-000 (2)

2-PIN HOUSING
TO WIRE ASM-CHASSIS

TRAILER CONNECTOR,
WIRING AND FASTENERS
(CHASSIS SUPPLIED)

8 PIN HOUSING
TO FREIGHTLINER
CHASSIS WIRING

LAMP-LICENSE
87201-01-000 (2)
SCREW
G11-06-12U (EXT) (4)

VIEW BA

1 REMOVE PAPER BACKING FROM REFLECTOR AND PREP APPLICATION SURFACE WITH ISOPROPYL ALCOHOL WIPE BEFORE INSTALLATION.

NOTES:

265 CODES/STANDARDS-CSA/CMVSS

1B1 CODES/STANDARDS USA

1B1 265

FOR ELECTRICAL TORQUE SPECIFICATIONS SEE DWG NO. 128783-01-000

FOR ELECTRICAL CALLOUTS SEE DWG NO. 121339-01-000

DESCRIPTION:
WIRING INSTL-EXTERIOR LAMPS

SHEET: 2 OF 3 ITEM/PART NO: 000174635 / 30138201000 REV

8

7

6

5

4

3

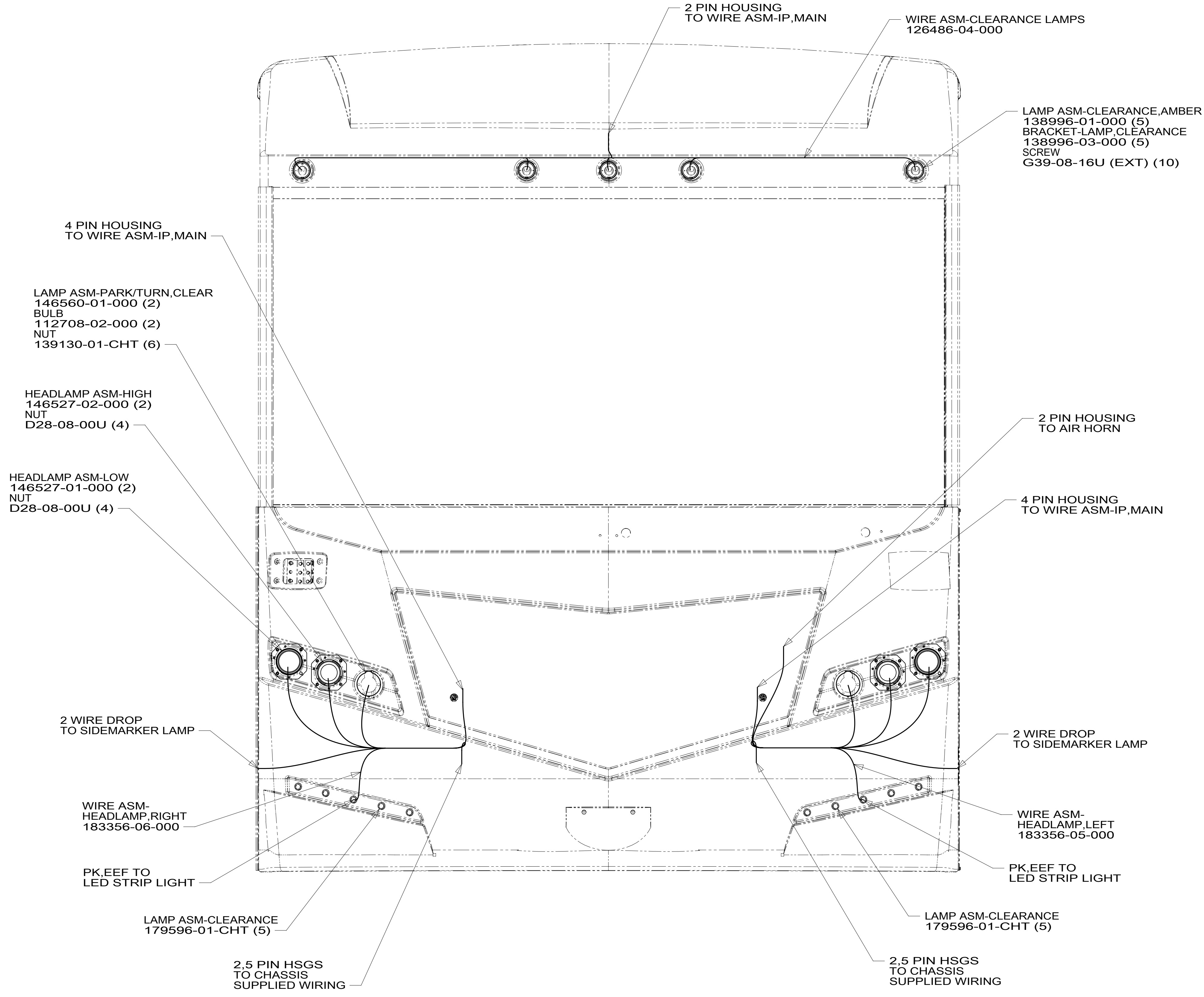
2

1

05-Apr-2017

8 7 6 5 4 3 2 1

D
C
B
A



VIEW CA

FOR ELECTRICAL TORQUE SPECIFICATIONS SEE DWG NO. 128783-01-000

FOR ELECTRICAL CALLOUTS SEE DWG NO. 121339-01-000

265 CODES/STANDARDS-CSA/CMVSS
1B1 CODES/STANDARDS USA

DESCRIPTION:	1B1 265	
WIRING INSTL-EXTERIOR LAMPS		
SHEET:	ITEM/PART NO.:	REV
3 OF 3	000174635 / 30138201000	

8 7 6 5 4 3 2 1 05-Apr-2017