

- 5 SEE SHEET 10 FOR ADDITIONAL INFORMATION ON LOFT BED.
  - 4 EDGE OF LABEL TO HANG JUST BELOW BOTTOM OF DASH.
  - 3 CUT VISOR WIRING TO 300MM BEFORE CONNECTING.
  - 2 USE TAPE 8363-03-000 TO SECURE WIRES IN A-POST.
1. WINNEBAGO WIRE ASSEMBLIES ARE SHOWN FOR CLARITY.
- NOTES:

- 45D LOFT BED - WITHOUT
- 45B LOFT BED
- 579 RADIO - CB WIRE PREP
- 265 CODES/STANDARDS-CSA/CMVSS
- 1B1 CODES/STANDARDS USA

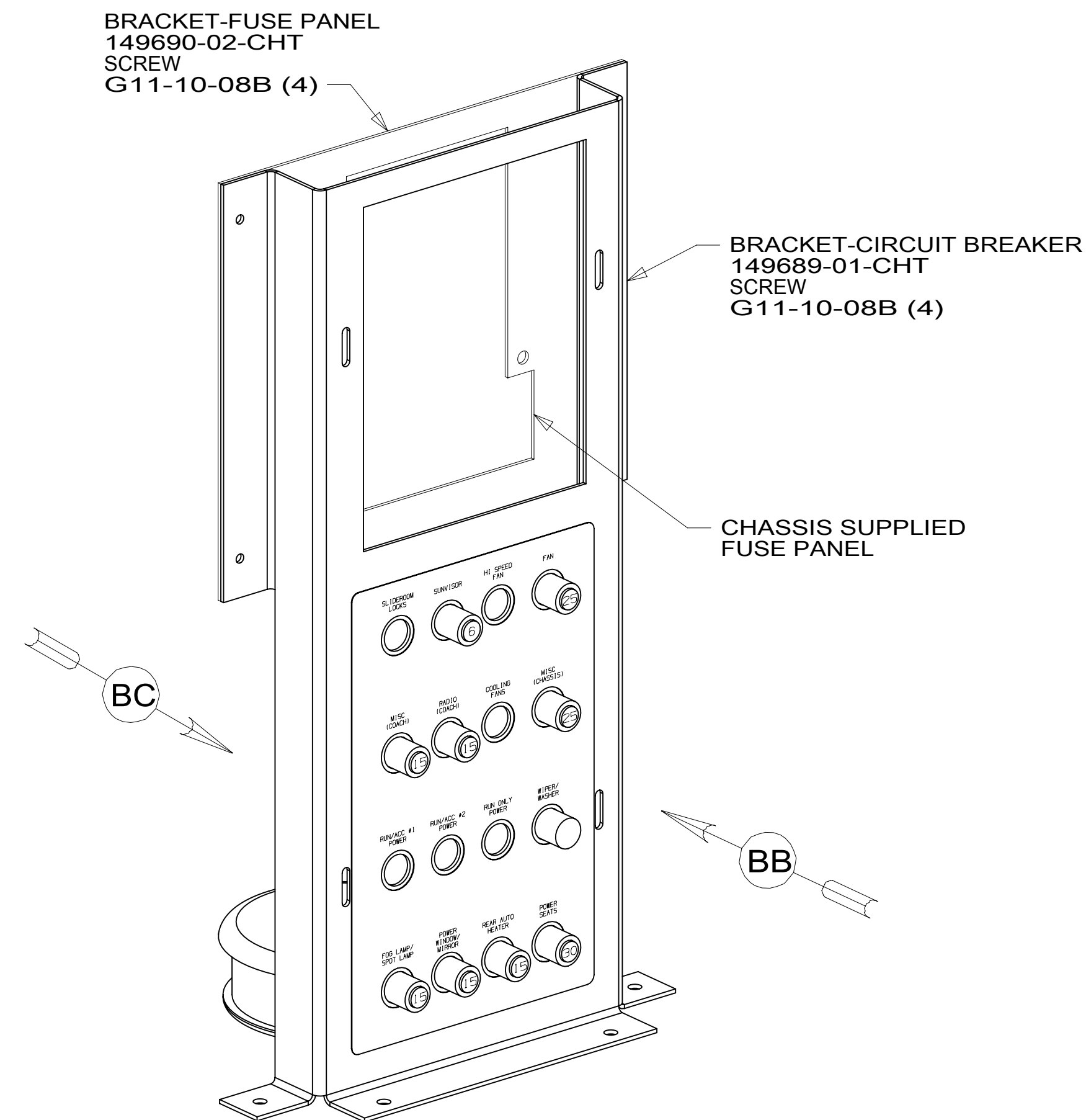
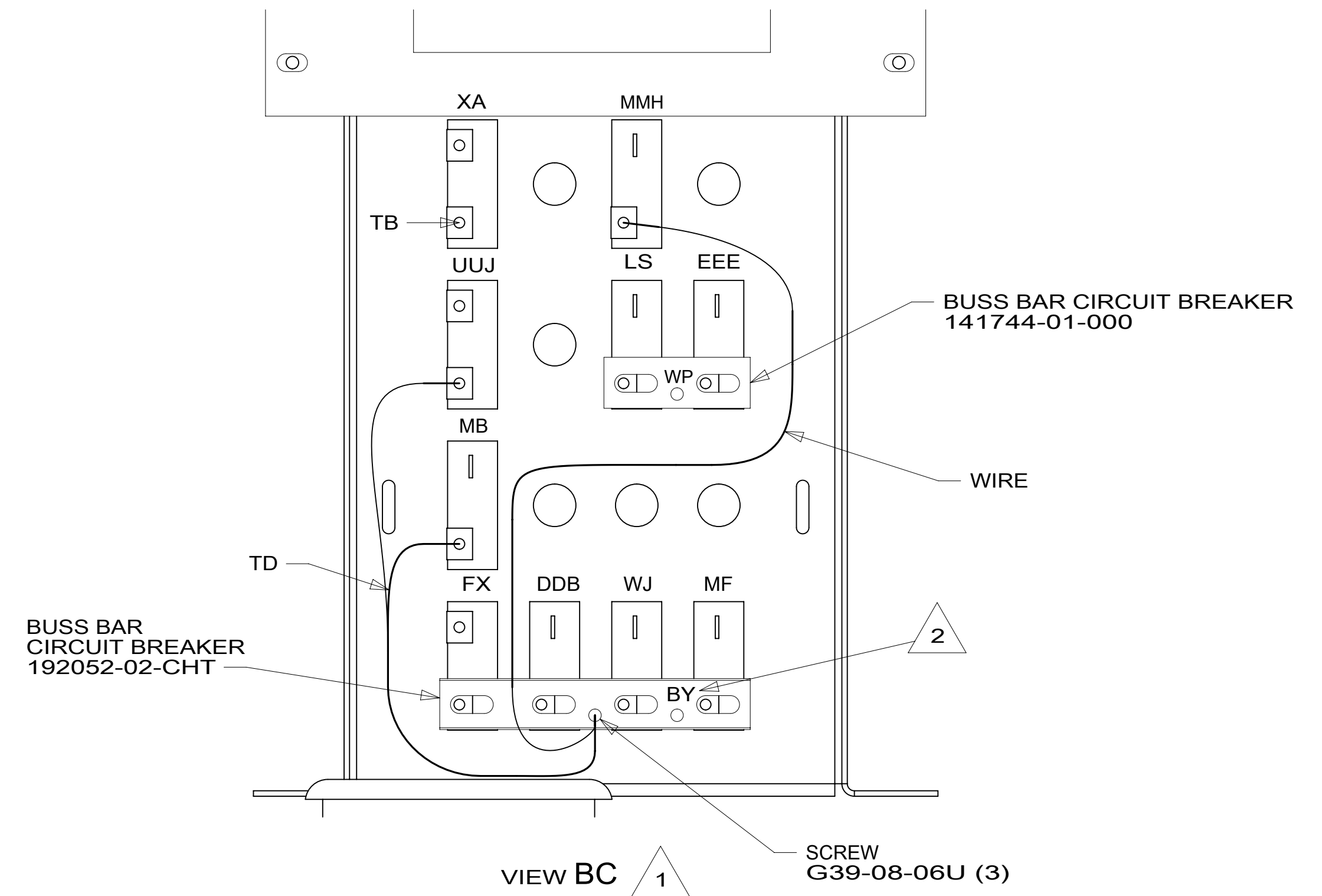
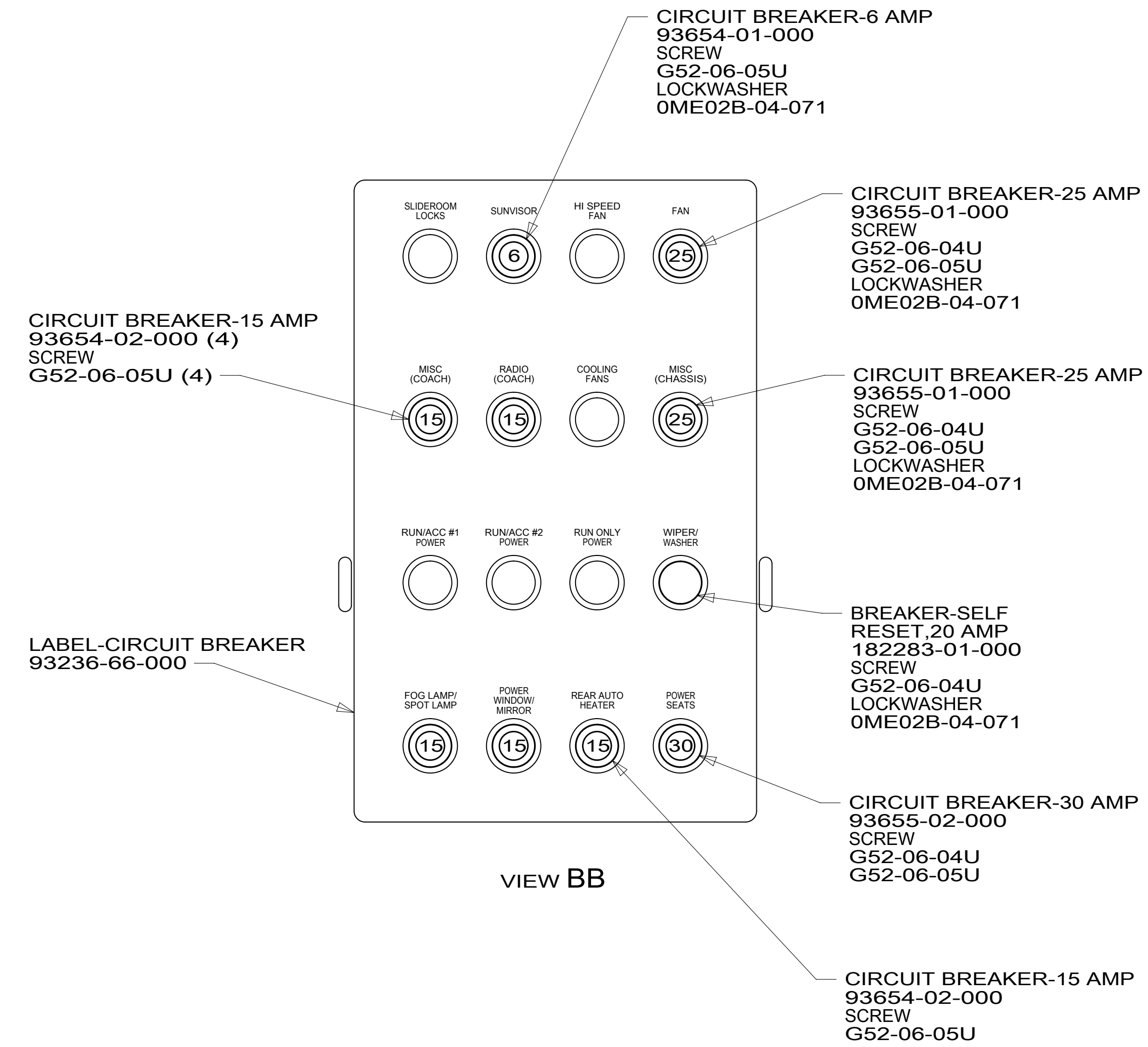
**WINNEBAGO**  
COPYRIGHT 2016 WINNEBAGO INDUSTRIES, INC.

DSNR:	ALL DIMENSIONS ARE IN MILLIMETERS
DFFR:	
UNSPECIFIED TOLERANCES:	MATERIAL:
WHOLE DIM (X) : 3	
ONE-PLACE (X.X) : 1.5	
TWO-PLACE (X.XX) : 0.50	
ANGLE : 1°	
REFER TO ES0018 FOR FASTENER TIGHTENING GUIDELINES	WEIGHT: (LBS) FIRST USED:
	17 D36Z
DESCRIPTION:	
<b>WIRING INSTL-FRONT END</b>	
SHEET: 1 OF 10	ITEM/PART NO: 000033423 / 31755901000
REF:	1 03-Oct-2017

FOR ELECTRICAL TORQUE SPECIFICATIONS SEE DWG NO. 128783-01-000

FOR ELECTRICAL CALLOUTS SEE DWG NO. 121339-01-000

8 7 6 5 4 3 2 1



**NOTES:**

2 CIRCUIT IS PART OF WIRE ASM-CHASSIS.

1 ALL CIRCUITS ARE IN WIRE ASM-IP, MAIN UNLESS OTHERWISE NOTED.

FOR ELECTRICAL TORQUE SPECIFICATIONS SEE DWG NO. 128783-01-000

FOR ELECTRICAL CALLOUTS SEE DWG NO. 121339-01-000

265	CODES/STANDARDS-CSA/CMVSS
1B1	CODES/STANDARDS USA
1B1	265
DESCRIPTION: <b>WIRING INSTL-FRONT END</b>	
SHEET: 2 OF 10	ITEM/PART NO: 000033423 / 31755901000
REV 03-Oct-2017	

8 7 6 5 4 3 2 1

2 3 LIGHT ASM-INDICATOR,RED  
190682-01-000  
LABEL-JACKS DOWN  
133533-01-CHT

RELAY  
63912-02-000 (5)  
SCREW  
G11-08-08U (5)

DETAIL DA

4 PIN HSG  
TO WIRE ASM-HEADLAMP

DETAIL DB

FORD DIAGNOSTIC CONNECTOR  
NUT-SPEED  
40921-03-000  
SCREW  
G11-10-10U (2)

1

DETAIL CA

- NOTES:
- 3 WIRING FROM LEVELING SYSTEM. SEE LEVELING SYSTEM INSTL FOR ADDITIONAL INFORMATION.
  - 2 CONNECT POSITIVE WIRE TO TERMINAL MARKED WITH "RED".
  - 1 CHASSIS SUPPLIED. REMOVE FROM TEMPORARY SHIPPING LOCATION AND MOUNT TO FRONT OF STEERING COLUMN COVER.

265 CODES/STANDARDS-CSA/CMVSS

1B1 CODES/STANDARDS USA

1B1 265

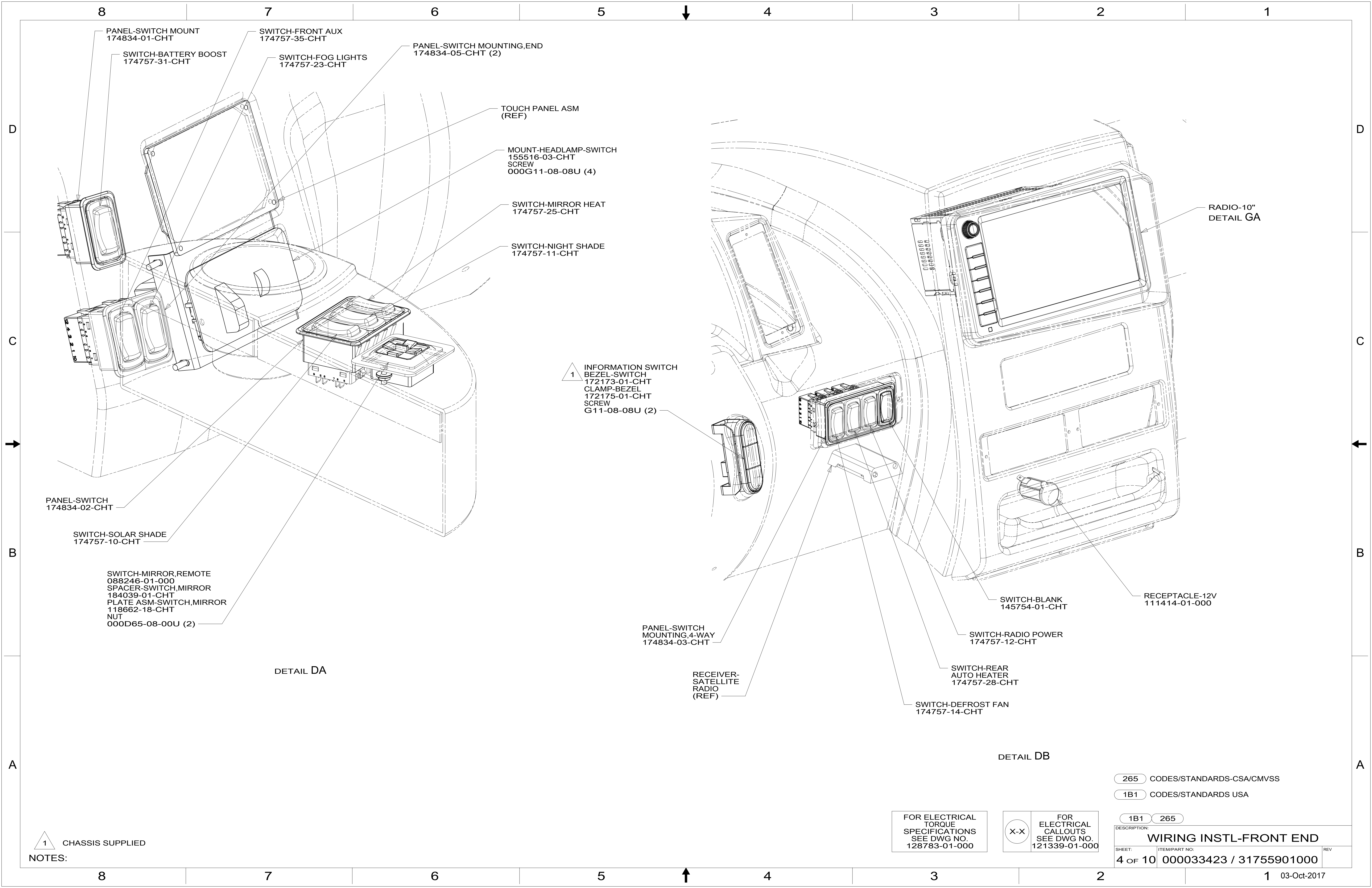
FOR ELECTRICAL  
TORQUE  
SPECIFICATIONS  
SEE DWG NO.  
128783-01-000

X-X

FOR  
ELECTRICAL  
CALLOUTS  
SEE DWG NO.  
121339-01-000

DESCRIPTION:  
**WIRING INSTL-FRONT END**

SHEET: 3 OF 10 ITEM/PART NO: 000033423 / 31755901000 REV



8 PANEL-SWITCH MOUNT  
174834-01-CHT

7 SWITCH-BATTERY BOOST  
174757-31-CHT

SWITCH-FRONT AUX  
174757-35-CHT

SWITCH-FOG LIGHTS  
174757-23-CHT

6 PANEL-SWITCH MOUNTING,END  
174834-05-CHT (2)

TOUCH PANEL ASM  
(REF)

MOUNT-HEADLAMP-SWITCH  
155516-03-CHT  
SCREW  
000G11-08-08U (4)

SWITCH-MIRROR HEAT  
174757-25-CHT

SWITCH-NIGHT SHADE  
174757-11-CHT

1 INFORMATION SWITCH  
BEZEL-SWITCH  
172173-01-CHT  
CLAMP-BEZEL  
172175-01-CHT  
SCREW  
G11-08-08U (2)

RADIO-10"  
DETAIL GA

PANEL-SWITCH  
174834-02-CHT

SWITCH-SOLAR SHADE  
174757-10-CHT

SWITCH-MIRROR,REMOTE  
088246-01-000  
SPACER-SWITCH,MIRROR  
184039-01-CHT  
PLATE ASM-SWITCH,MIRROR  
118662-18-CHT  
NUT  
000D65-08-00U (2)

DETAIL DA

PANEL-SWITCH  
MOUNTING,4-WAY  
174834-03-CHT

RECEIVER-  
SATELLITE  
RADIO  
(REF)

SWITCH-BLANK  
145754-01-CHT

RECEPTACLE-12V  
111414-01-000

SWITCH-RADIO POWER  
174757-12-CHT

SWITCH-REAR  
AUTO HEATER  
174757-28-CHT

SWITCH-DEFROST FAN  
174757-14-CHT

DETAIL DB

265 CODES/STANDARDS-CSA/CMVSS

1B1 CODES/STANDARDS USA

1B1 265

FOR ELECTRICAL  
TORQUE  
SPECIFICATIONS  
SEE DWG NO.  
128783-01-000

FOR ELECTRICAL  
CALLOUTS  
SEE DWG NO.  
121339-01-000

DESCRIPTION:  
**WIRING INSTL-FRONT END**

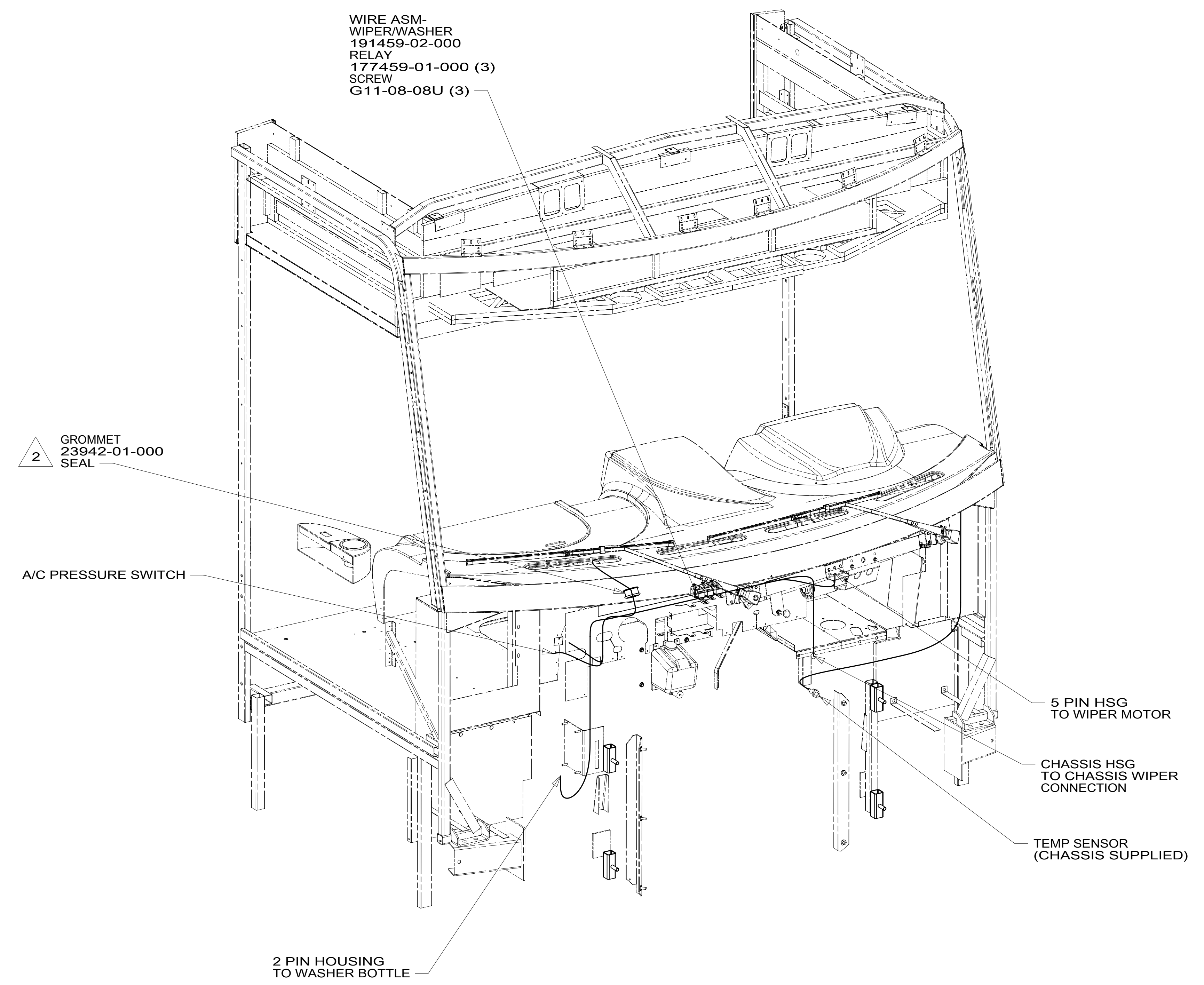
SHEET: 4 OF 10 ITEM/PART NO: 000033423 / 31755901000 REV

1 CHASSIS SUPPLIED  
NOTES:

8 7 6 5 4 3 2 1

D  
C  
B  
A

D  
C  
B  
A



DETAIL EA

2 ROUTE WIRES THROUGH HOLE IN STEEL.

- 1. GATHER ALL EXCESS WIRE AFTER MAKING ALL CONNECTIONS. BUNDLE AND SECURE WITH WIRE TIE 8343-01-000 OR 93147-01-000.

NOTES:

265 CODES/STANDARDS-CSA/CMVSS

1B1 CODES/STANDARDS USA

1B1 265

FOR ELECTRICAL TORQUE SPECIFICATIONS SEE DWG NO. 128783-01-000

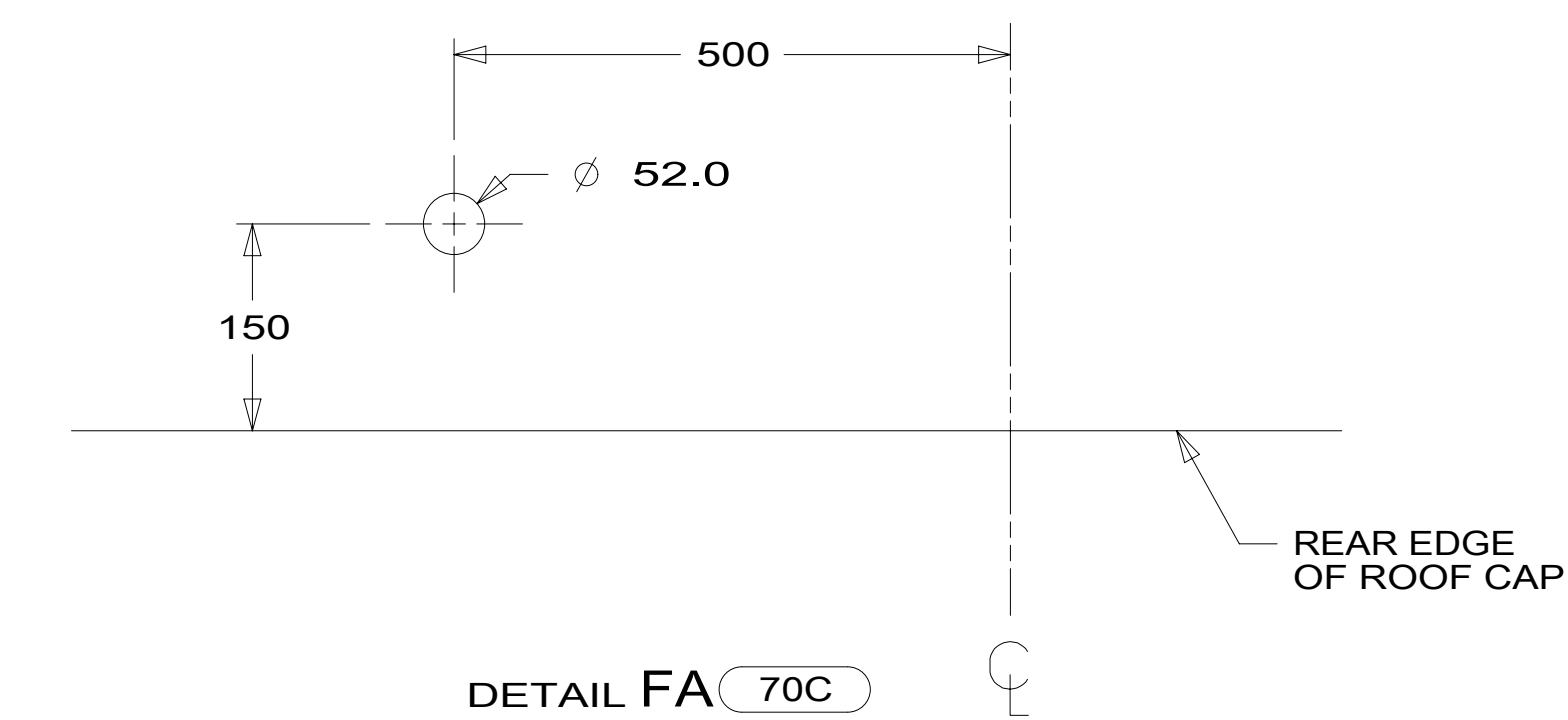
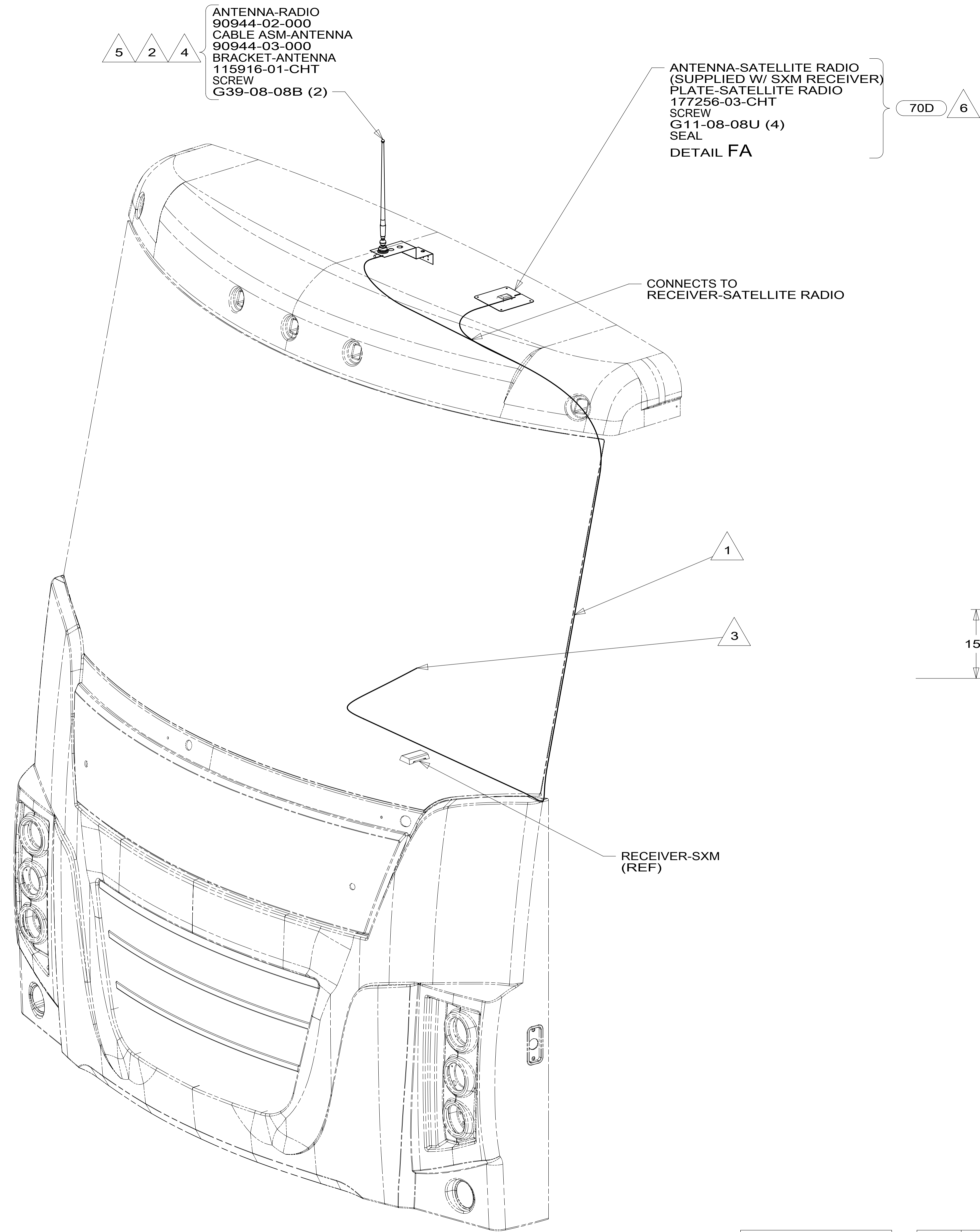
FOR ELECTRICAL CALLOUTS SEE DWG NO. 121339-01-000

DESCRIPTION: WIRING INSTL-FRONT END

SHEET: 5 OF 10 ITEM/PART NO: 000033423 / 31755901000 REV

8 7 6 5 4 3 2 1 03-Oct-2017

8 7 6 5 4 3 2 1



- NOTES:
- 6 MOUNT ANTENNA SUCH THAT BASE IS SQUARE W/REAR OF ROOF CAP & HOLE IS DIRECTLY OVER HOLE IN FIBERGLASS. SEAL HOLE IN ROOF CAP, BASE AT SCREWS.
  - 5 REMOVE AND REINSTALL AFTER PAINT.
  - 4 USE HOLE IN BRACKET AS GUIDE TO DRILL 13 DIAMETER HOLE IN FIBERGLASS.
  - 3 TO RADIO.
  - 2 SEAL AROUND ANTENNA BASE.
  - 1 ROUTE CABLE ALONG A-POST, UNDER TRIM COVER.

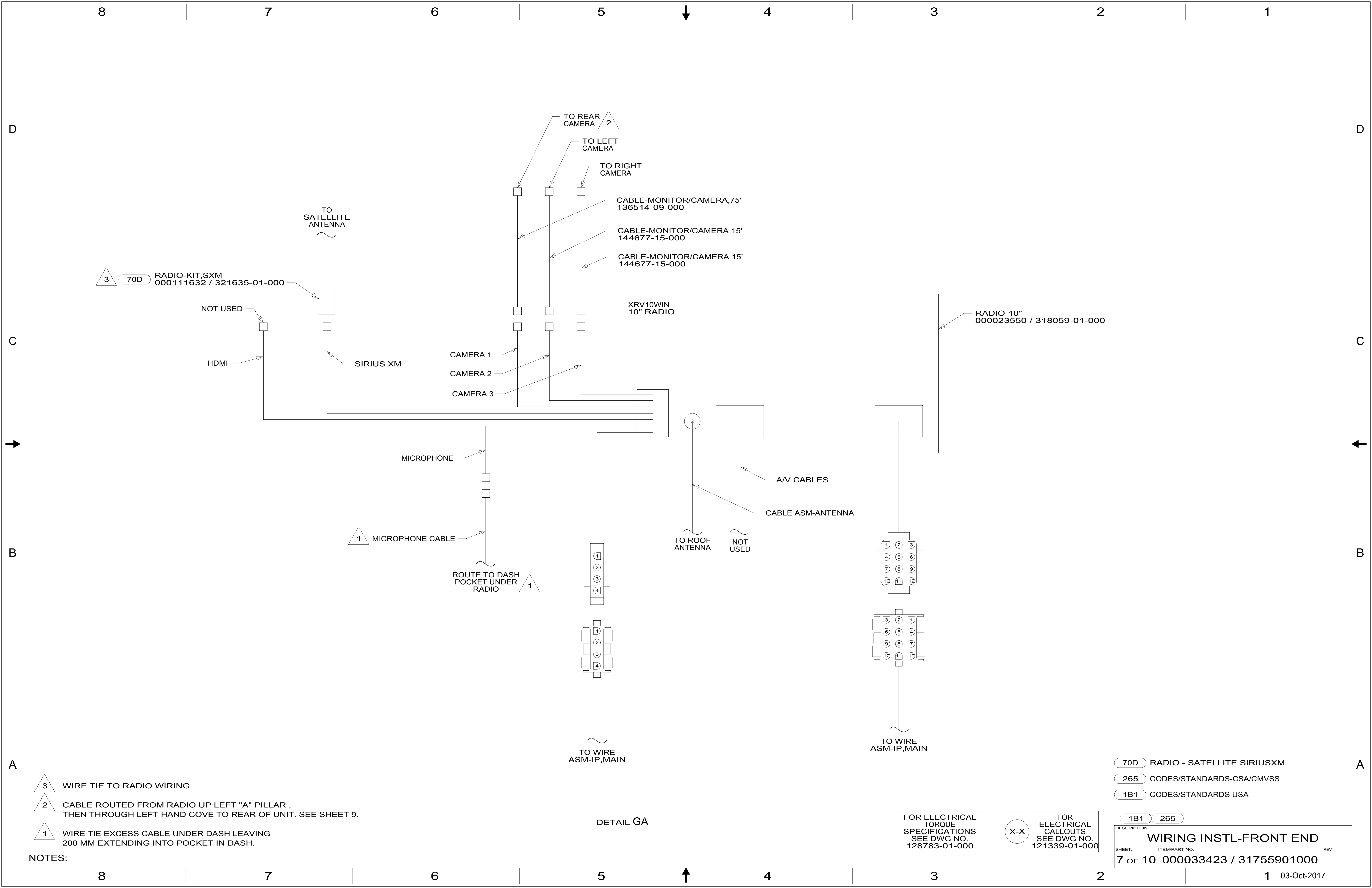
FOR ELECTRICAL TORQUE SPECIFICATIONS SEE DWG NO. 128783-01-000

FOR ELECTRICAL CALLOUTS SEE DWG NO. 121339-01-000

- 70D RADIO - SATELLITE SIRIUSXM
- 265 CODES/STANDARDS-CSA/CMVSS
- 1B1 CODES/STANDARDS USA

DESCRIPTION:		1B1 265	
<b>WIRING INSTL-FRONT END</b>			
SHEET:	ITEM/PART NO.:	REV	
6 OF 10	000033423 / 31755901000		

8 7 6 5 4 3 2 1 03-Oct-2017



3 70D RADIO-KIT,SXM  
000111632 / 321635-01-000

NOT USED  
HDMI  
SIRIUS XM  
TO SATELLITE ANTENNA

CAMERA 1  
CAMERA 2  
CAMERA 3

TO REAR CAMERA 2  
TO LEFT CAMERA  
TO RIGHT CAMERA

CABLE-MONITOR/CAMERA,75'  
136514-09-000  
CABLE-MONITOR/CAMERA 15'  
144677-15-000  
CABLE-MONITOR/CAMERA 15'  
144677-15-000

XR10WIN  
10" RADIO

RADIO-10"  
000023550 / 318059-01-000

1 MICROPHONE CABLE  
MICROPHONE  
ROUTE TO DASH POCKET UNDER RADIO 1

1  
2  
3  
4

1  
2  
3  
4

TO WIRE ASM-IP,MAIN

TO ROOF ANTENNA  
NOT USED

A/V CABLES  
CABLE ASM-ANTENNA

1 2 3  
4 5 6  
7 8 9  
10 11 12

3 2 1  
6 5 4  
9 8 7  
12 11 10

TO WIRE ASM-IP,MAIN

- NOTES:
- 3 WIRE TIE TO RADIO WIRING.
  - 2 CABLE ROUTED FROM RADIO UP LEFT "A" PILLAR , THEN THROUGH LEFT HAND COVE TO REAR OF UNIT. SEE SHEET 9.
  - 1 WIRE TIE EXCESS CABLE UNDER DASH LEAVING 200 MM EXTENDING INTO POCKET IN DASH.

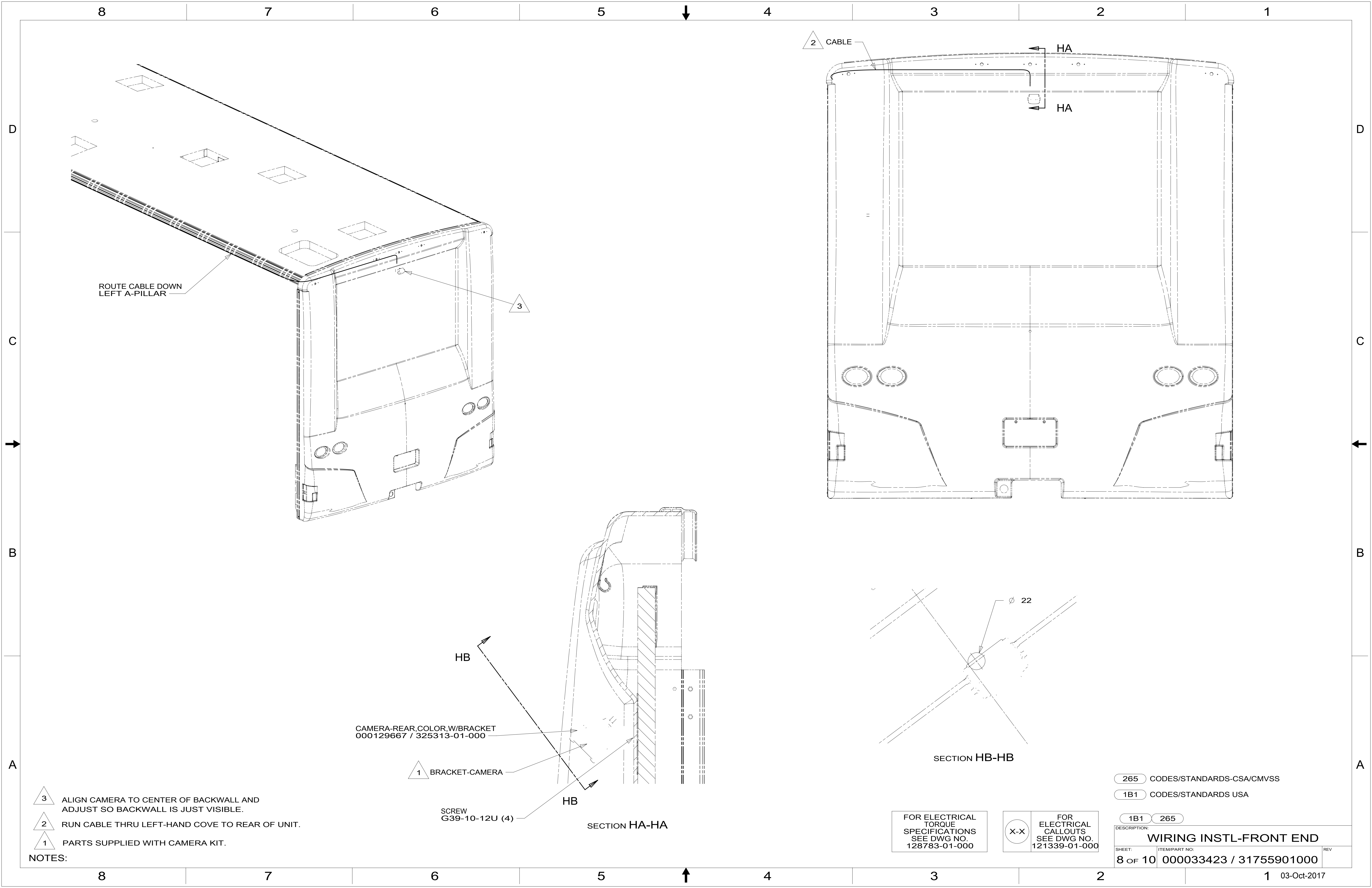
DETAIL GA

FOR ELECTRICAL TORQUE SPECIFICATIONS SEE DWG NO. 128783-01-000

FOR ELECTRICAL CALLOUTS SEE DWG NO. 121339-01-000

- 70D RADIO - SATELLITE SIRIUSXM
- 265 CODES/STANDARDS-CSA/CMVSS
- 1B1 CODES/STANDARDS USA

DESCRIPTION: <b>WIRING INSTL-FRONT END</b>		
SHEET: 7 of 10	ITEM/PART NO: 000033423 / 31755901000	REV
03-Oct-2017		



ROUTE CABLE DOWN  
LEFT A-PILLAR

2 CABLE

HA

HA

3

CAMERA-REAR,COLOR,W/BACKET  
000129667 / 325313-01-000

1 BRACKET-CAMERA

SCREW  
G39-10-12U (4)

SECTION HA-HA

SECTION HB-HB

FOR ELECTRICAL  
TORQUE  
SPECIFICATIONS  
SEE DWG NO.  
128783-01-000

FOR  
ELECTRICAL  
CALLOUTS  
SEE DWG NO.  
121339-01-000

265 CODES/STANDARDS-CSA/CMVSS

1B1 CODES/STANDARDS USA

1B1 265

DESCRIPTION:  
**WIRING INSTL-FRONT END**

SHEET: 8 OF 10 ITEM/PART NO: 000033423 / 31755901000 REV

- NOTES:
- 3 ALIGN CAMERA TO CENTER OF BACKWALL AND ADJUST SO BACKWALL IS JUST VISIBLE.
  - 2 RUN CABLE THRU LEFT-HAND COVE TO REAR OF UNIT.
  - 1 PARTS SUPPLIED WITH CAMERA KIT.



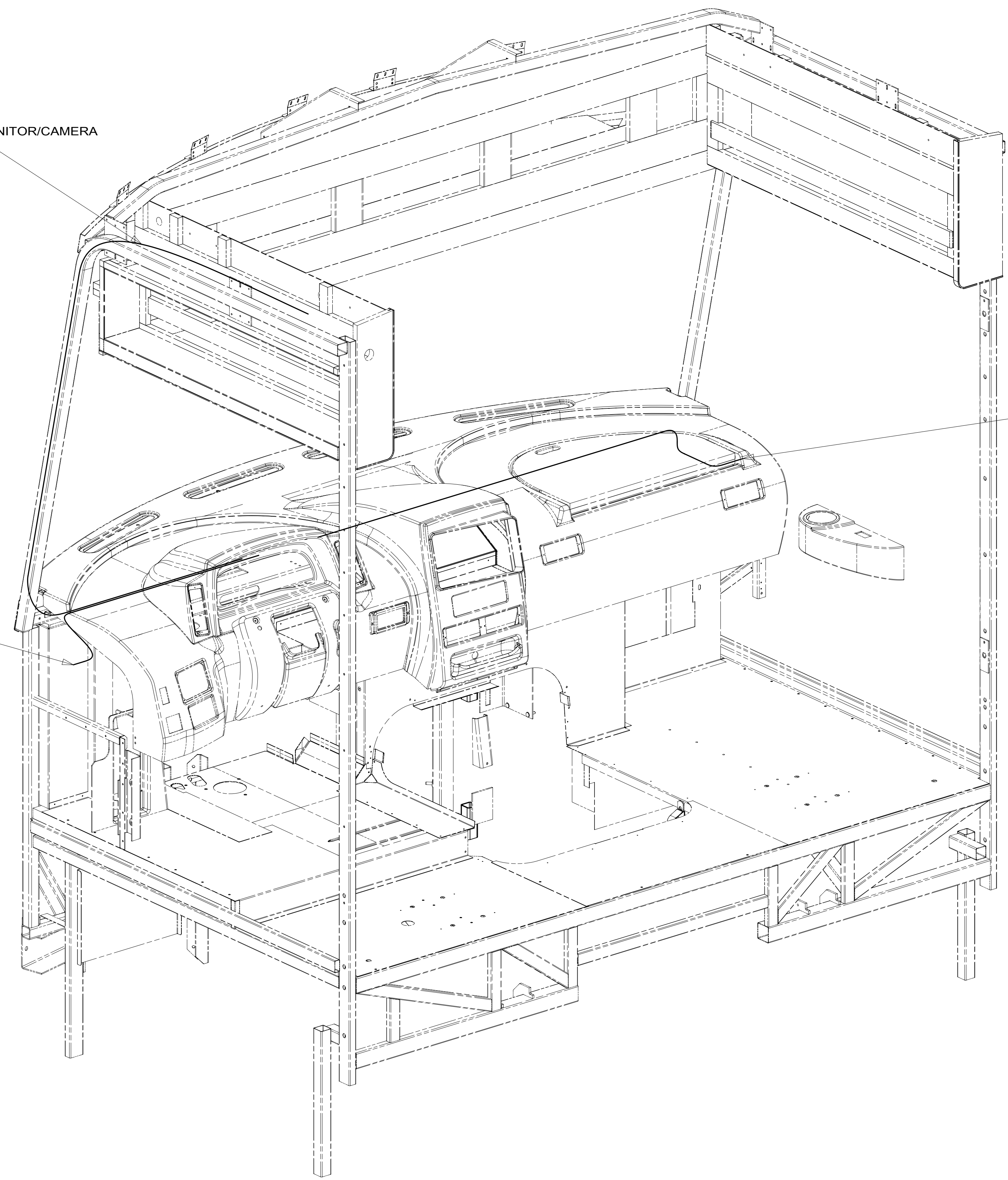
8 7 6 5 4 3 2 1

D  
C  
B  
A

CABLE-MONITOR/CAMERA  
(REF)

CABLE-SIDE CAMERA  
(REF) 1

1 CABLE-SIDE CAMERA  
(REF)



1 CONNECT CAMERA CABLE TO MIRROR.

NOTES:

FOR ELECTRICAL  
TORQUE  
SPECIFICATIONS  
SEE DWG NO.  
128783-01-000

FOR  
ELECTRICAL  
CALLOUTS  
SEE DWG NO.  
121339-01-000

265 CODES/STANDARDS-CSA/CMVSS  
1B1 CODES/STANDARDS USA

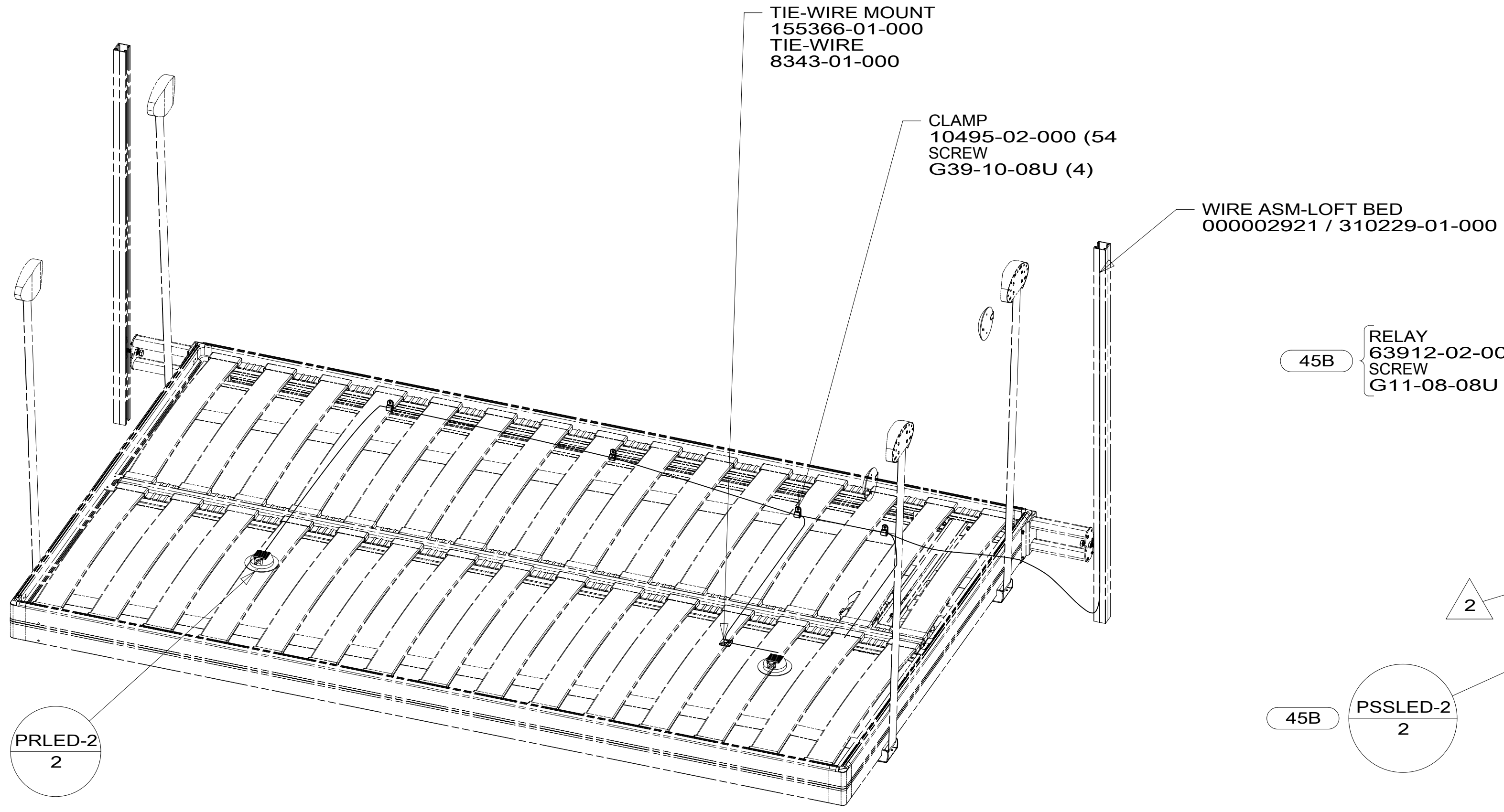
1B1 265

DESCRIPTION:  
**WIRING INSTL-FRONT END**

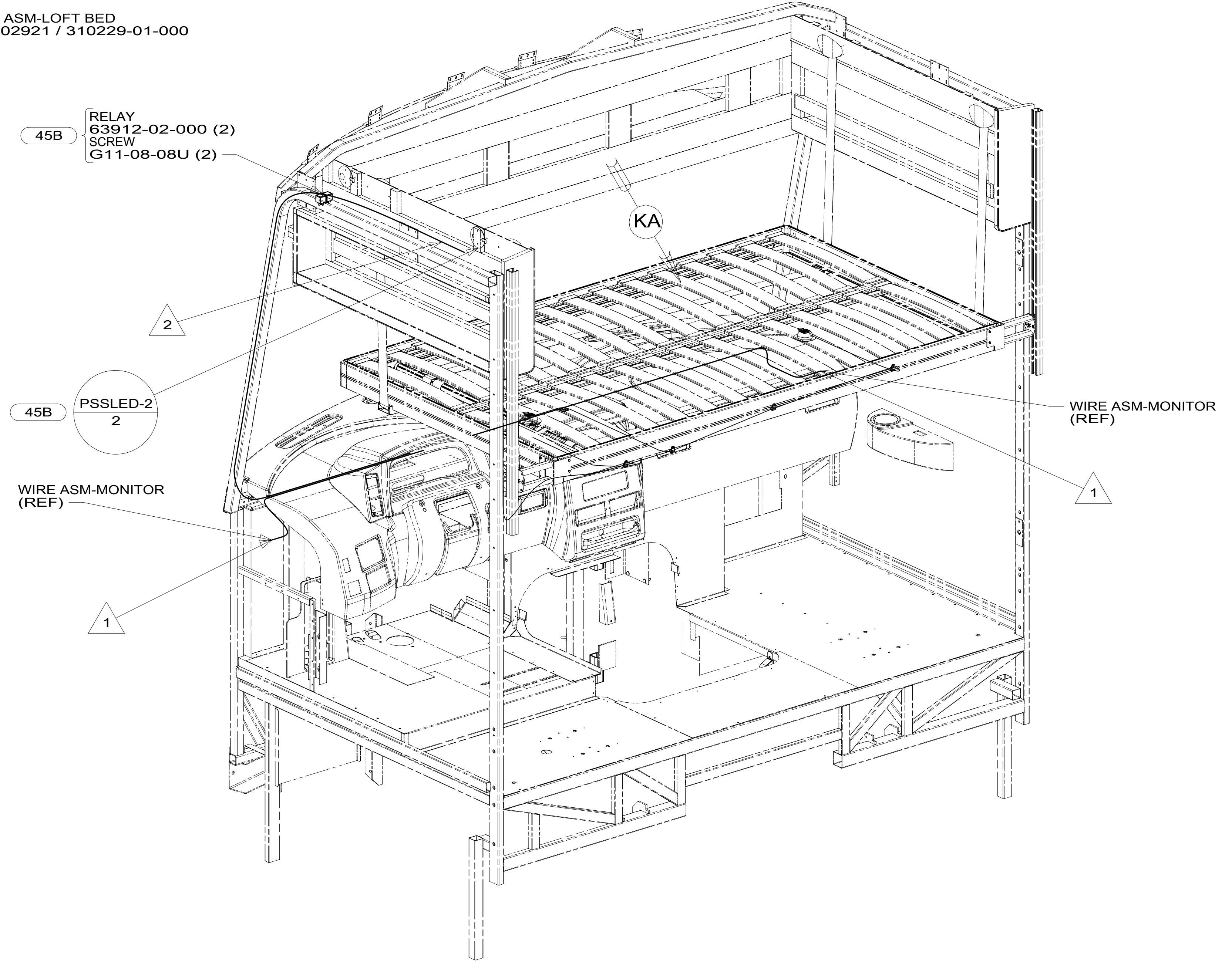
SHEET: 9 OF 10 ITEM/PART NO: 000033423 / 31755901000 REV

8 7 6 5 4 3 2 1 03-Oct-2017

8 7 6 5 4 3 2 1



DETAIL KA 45B



- NOTES:
- 2 RUN CABLE THRU LEFT-HAND COVE TO REAR OF UNIT. SEE SHEET 9.
  - 1 CONNECT CAMERA THRU HOLE IN SIDEWALL, PUSH CONNECTOR BACK THRU SIDEWALL, AND SEAL HOLE.

FOR ELECTRICAL TORQUE SPECIFICATIONS SEE DWG NO. 128783-01-000

FOR ELECTRICAL CALLOUTS SEE DWG NO. 121339-01-000

- 45B LOFT BED
- 265 CODES/STANDARDS-CSA/CMVSS
- 1B1 CODES/STANDARDS USA

DESCRIPTION:	
<b>WIRING INSTL-FRONT END</b>	
SHEET:	ITEM/PART NO. REV
10 OF 10	000033423 / 31755901000

8 7 6 5 4 3 2 1 03-Oct-2017