

- 4 WIRE ROUTED THROUGH FLOOR IN THIS AREA.
- 3 SEE LOAD CENTER/ATS ASM FOR ADDITIONAL INFORMATION.
2. WIRES ROUTED UNDER FLOOR.
1. AT MINIMUM ALL WIRES TO BE SUPPORTED AND SECURED PER CODE REQUIREMENTS. USE CLAMP 10495 OR 10497 OR WIRE TIE 8343 OR 108046 AND SCREW G67-XX-XXX OR G56-XX-XXX AS APPROPRIATE FOR INSTALLATION.

NOTES:

- 265 CODES/STANDARDS-CSA/CMVSS
- 1B1 CODES/STANDARDS USA
- 1B1 265

WINNEBAGO
COPYRIGHT 2016 WINNEBAGO INDUSTRIES, INC.

DSNR:	ALL DIMENSIONS ARE IN MILLIMETERS
DIFTR:	MATERIAL:
UNSPECIFIED TOLERANCES:	WEIGHT: (LBS)
WHOLE DIM (X) : 3	FIRST USED: 17 D36Z
ONE-PLACE (X.X) : 1.5	
TWO-PLACE (X.XX) : 0.50	
ANGLE : 1°	

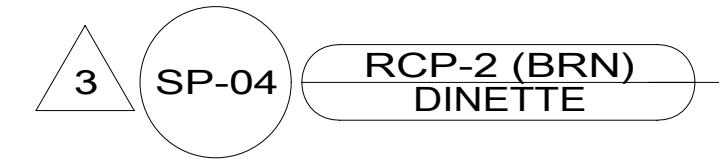
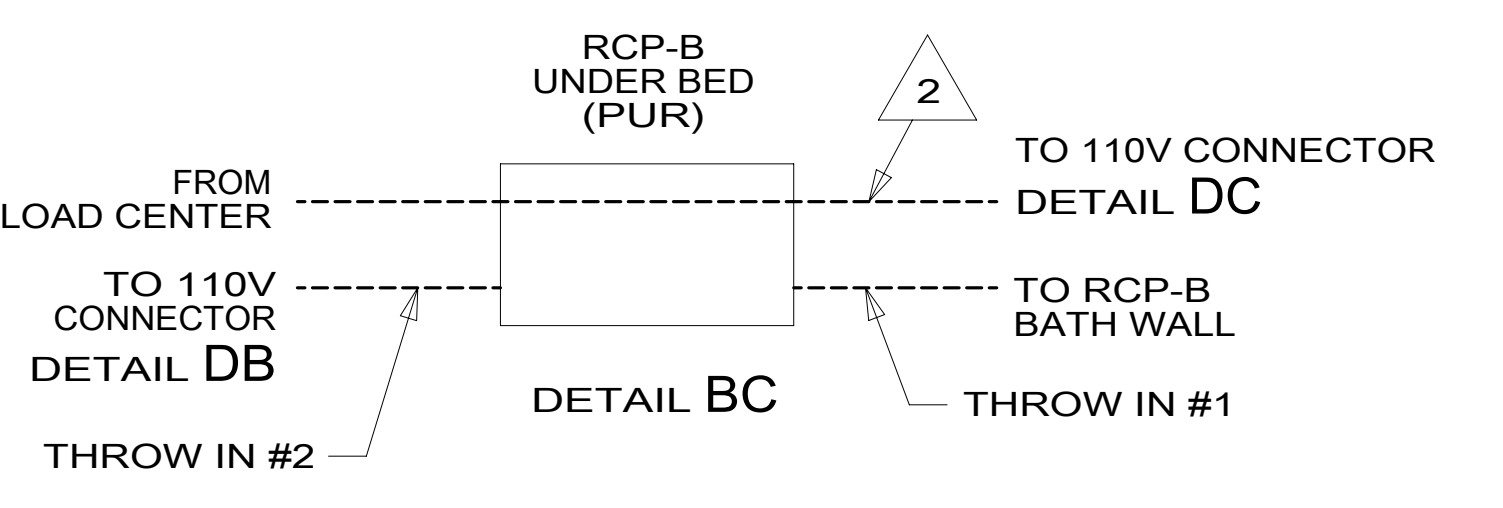
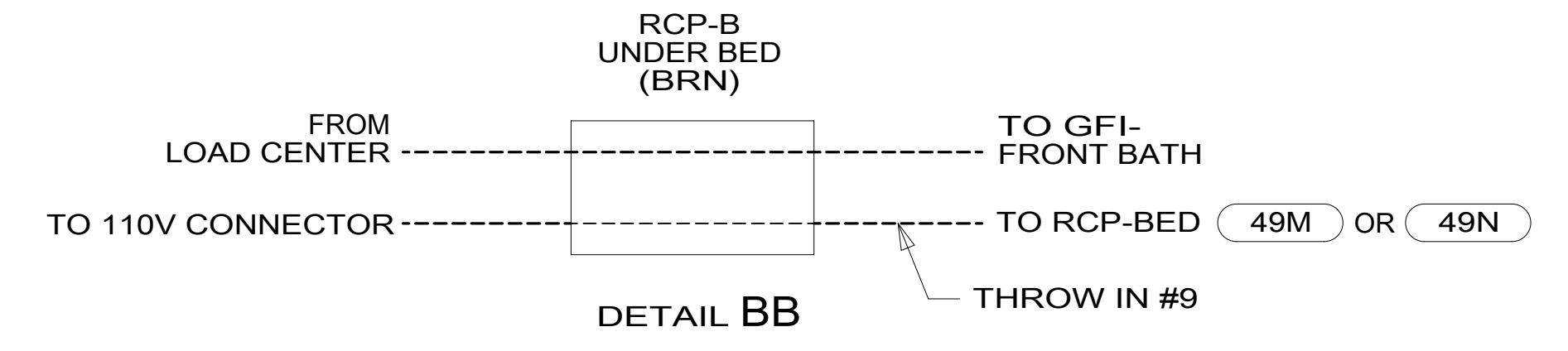
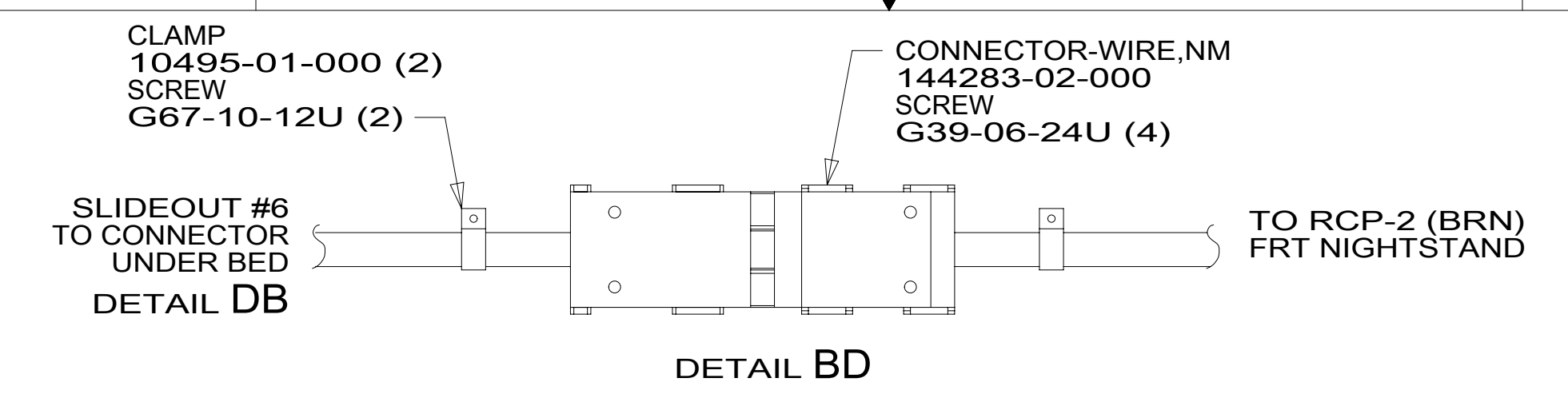
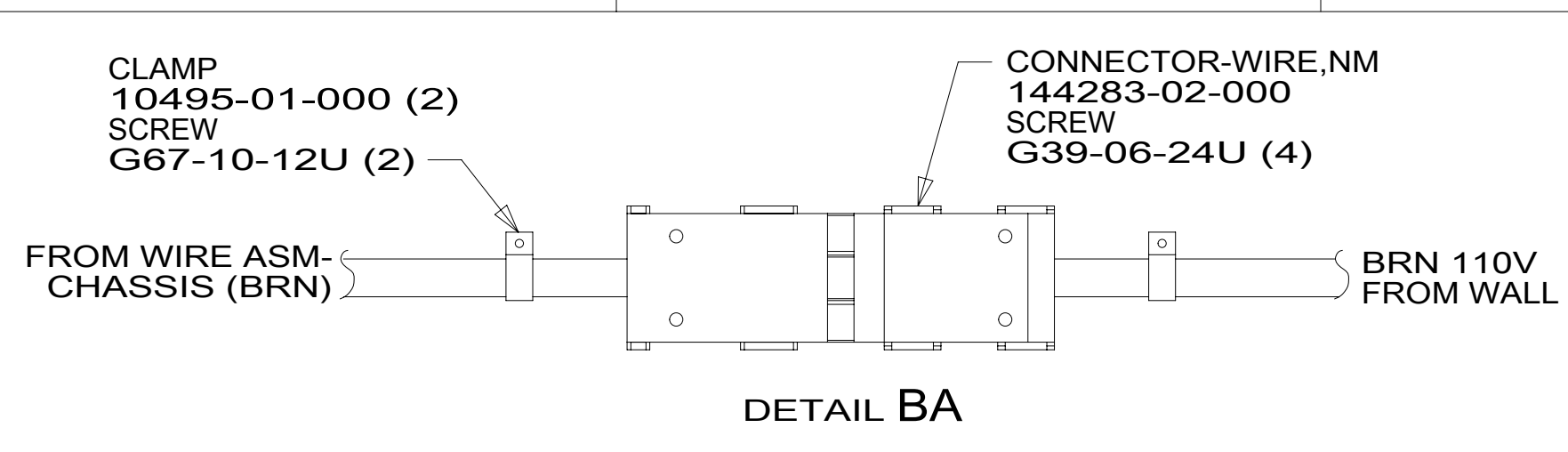
REFER TO ES0018 FOR FASTENER TIGHTENING GUIDELINES

DESCRIPTION: **WIRING INSTL-BODY, 110V**

SHEET: 1 OF 7 ITEM/PART NO: 000033391 / 31753501000 REF: 1 02-Apr-2018

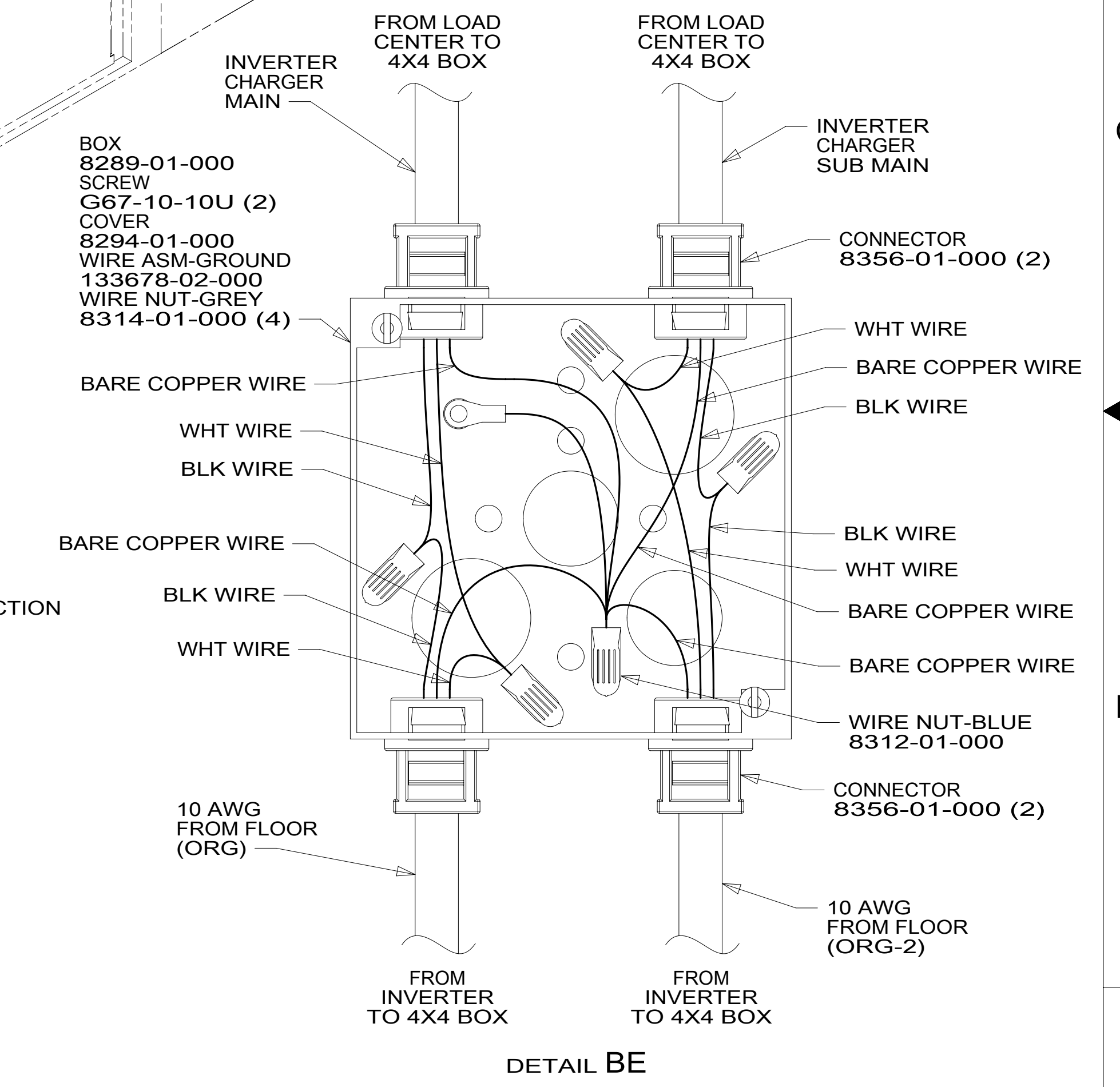
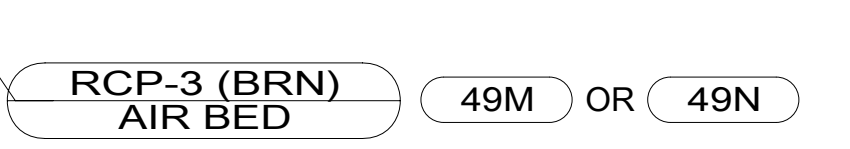
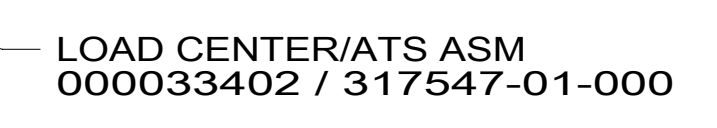
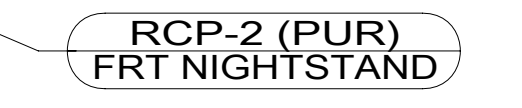
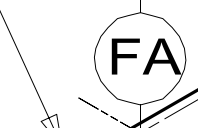
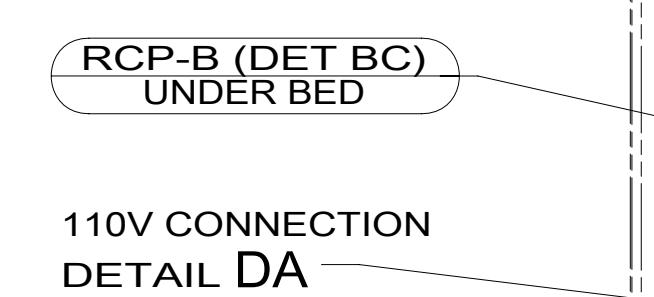
FOR ELECTRICAL TORQUE SPECIFICATIONS SEE DWG NO. 128783-01-000

X-X FOR ELECTRICAL CALLOUTS SEE DWG NO. 121339-01-000



- 1B1 RECEPTACLE ASM-GFI,US-15A 000120175 / 322736-01-XXX
- 265 RECEPTACLE ASM-GFI,CAN-15A 000120176 / 322737-01-XXX (BRN) (FRONT BATH)

- RCP-B (PUR) BATH WALL
- RCP-B (RED) BATH WALL
- RCP-B (GRN) BATH WALL
- RCP-2 (PUR) BDRM OVHD



- 3 WIRE ROUTED IN SIDEWALL.
- 2 WIRE ROUTED UNDER FLOOR.

1. AT MINIMUM ALL WIRES TO BE SUPPORTED AND SECURED PER CODE REQUIREMENTS. USE CLAMP 10495 OR 10497 OR WIRE TIE 8343 OR 108046 AND SCREW G67-XX-XXX OR G56-XX-XXX AS APPROPRIATE FOR INSTALLATION.

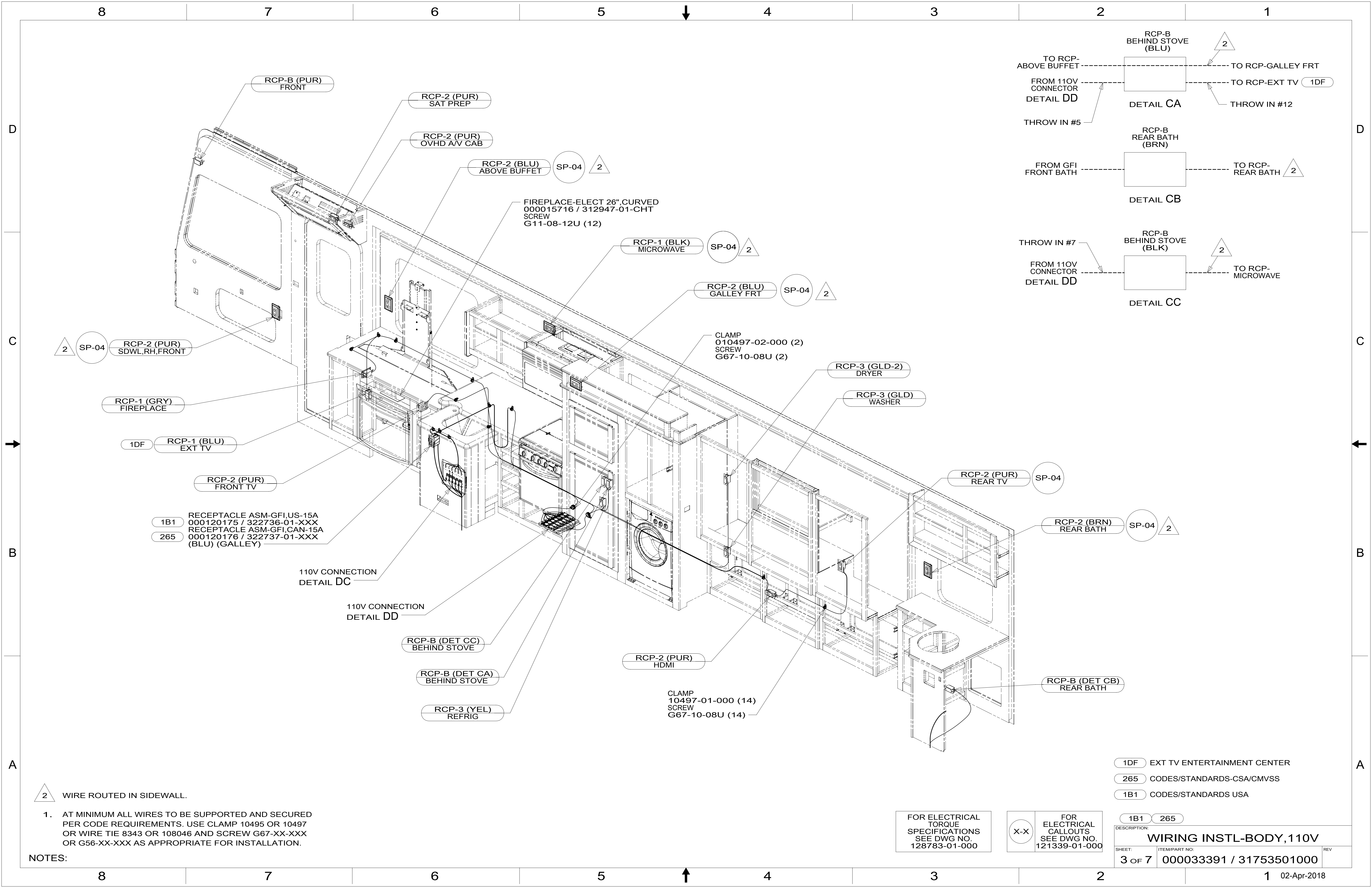
NOTES:

FOR ELECTRICAL TORQUE SPECIFICATIONS SEE DWG NO. 128783-01-000

FOR ELECTRICAL CALLOUTS SEE DWG NO. 121339-01-000

- 49M AIR SLEEP SYSTEM-QUEEN SIZE
- 49N AIR SLEEP SYSTEM - KING SIZE
- 265 CODES/STANDARDS-CSA/CMVSS
- 1B1 CODES/STANDARDS USA

DESCRIPTION:		1B1 265
WIRING INSTL-BODY, 110V		
SHEET:	ITEM/PART NO.:	REV:
2 OF 7	000033391 / 31753501000	



RCP-B (PUR) FRONT

RCP-2 (PUR) SAT PREP

RCP-2 (PUR) OVHD AV CAB

RCP-2 (BLU) ABOVE BUFFET SP-04 2

FIREPLACE-ELECT 26",CURVED
000015716 / 312947-01-CHT
SCREW
G11-08-12U (12)

RCP-1 (BLK) MICROWAVE SP-04 2

RCP-2 (BLU) GALLEY FRT SP-04 2

2 SP-04 RCP-2 (PUR) SDWL,RH,FRONT

RCP-1 (GRY) FIREPLACE

1DF RCP-1 (BLU) EXT TV

RCP-2 (PUR) FRONT TV

1B1 RECEPTACLE ASM-GFI,US-15A
000120175 / 322736-01-XXX
265 RECEPTACLE ASM-GFI,CAN-15A
000120176 / 322737-01-XXX
(BLU) (GALLEY)

110V CONNECTION
DETAIL DC

110V CONNECTION
DETAIL DD

RCP-B (DET CC) BEHIND STOVE

RCP-B (DET CA) BEHIND STOVE

RCP-3 (YEL) REFRIG

RCP-2 (PUR) HDMI

CLAMP
10497-01-000 (14)
SCREW
G67-10-08U (14)

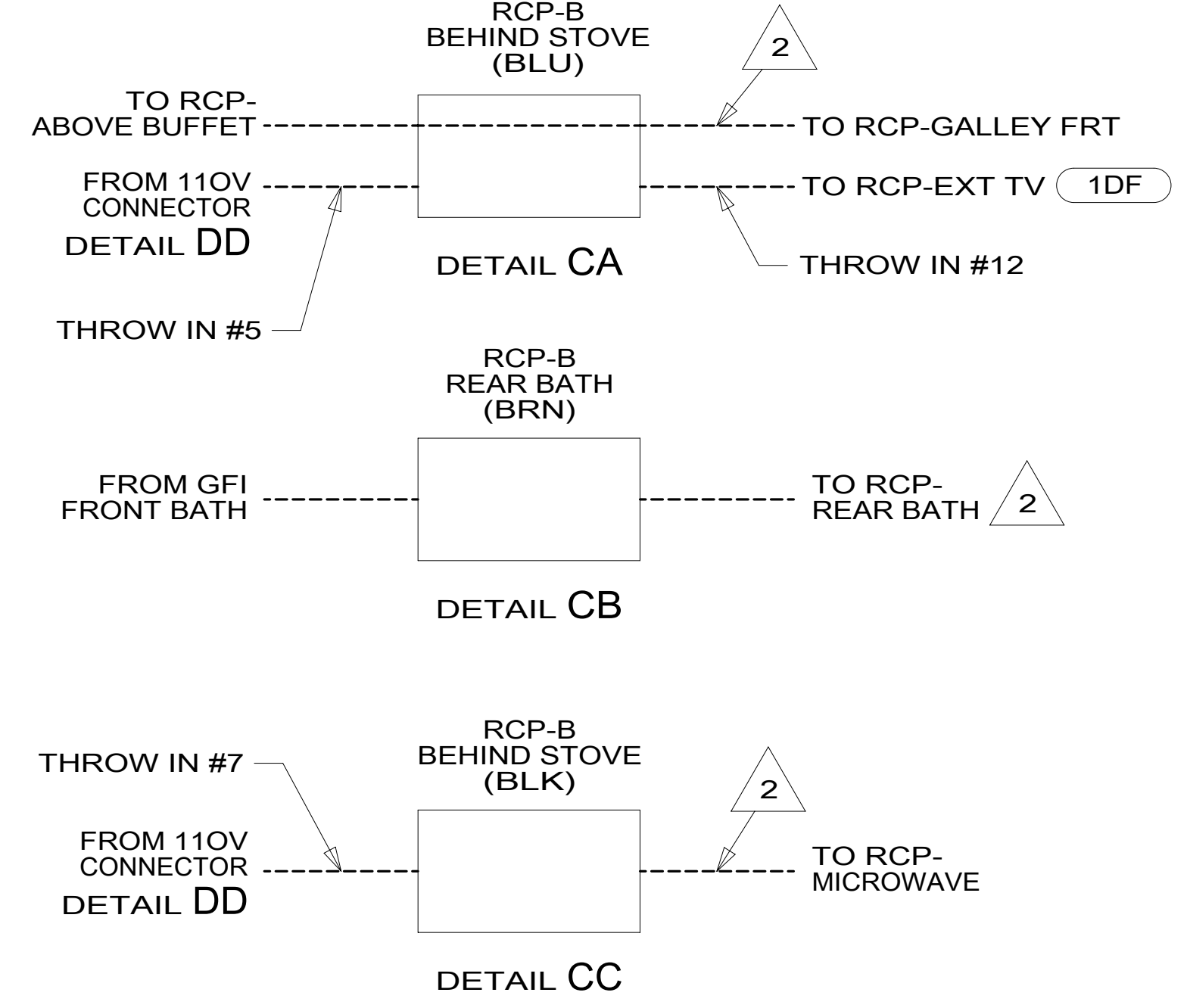
RCP-3 (GLD-2) DRYER

RCP-3 (GLD) WASHER

RCP-2 (PUR) REAR TV SP-04

RCP-2 (BRN) REAR BATH SP-04 2

RCP-B (DET CB) REAR BATH



2 WIRE ROUTED IN SIDEWALL.

1. AT MINIMUM ALL WIRES TO BE SUPPORTED AND SECURED PER CODE REQUIREMENTS. USE CLAMP 10495 OR 10497 OR WIRE TIE 8343 OR 108046 AND SCREW G67-XX-XXX OR G56-XX-XXX AS APPROPRIATE FOR INSTALLATION.

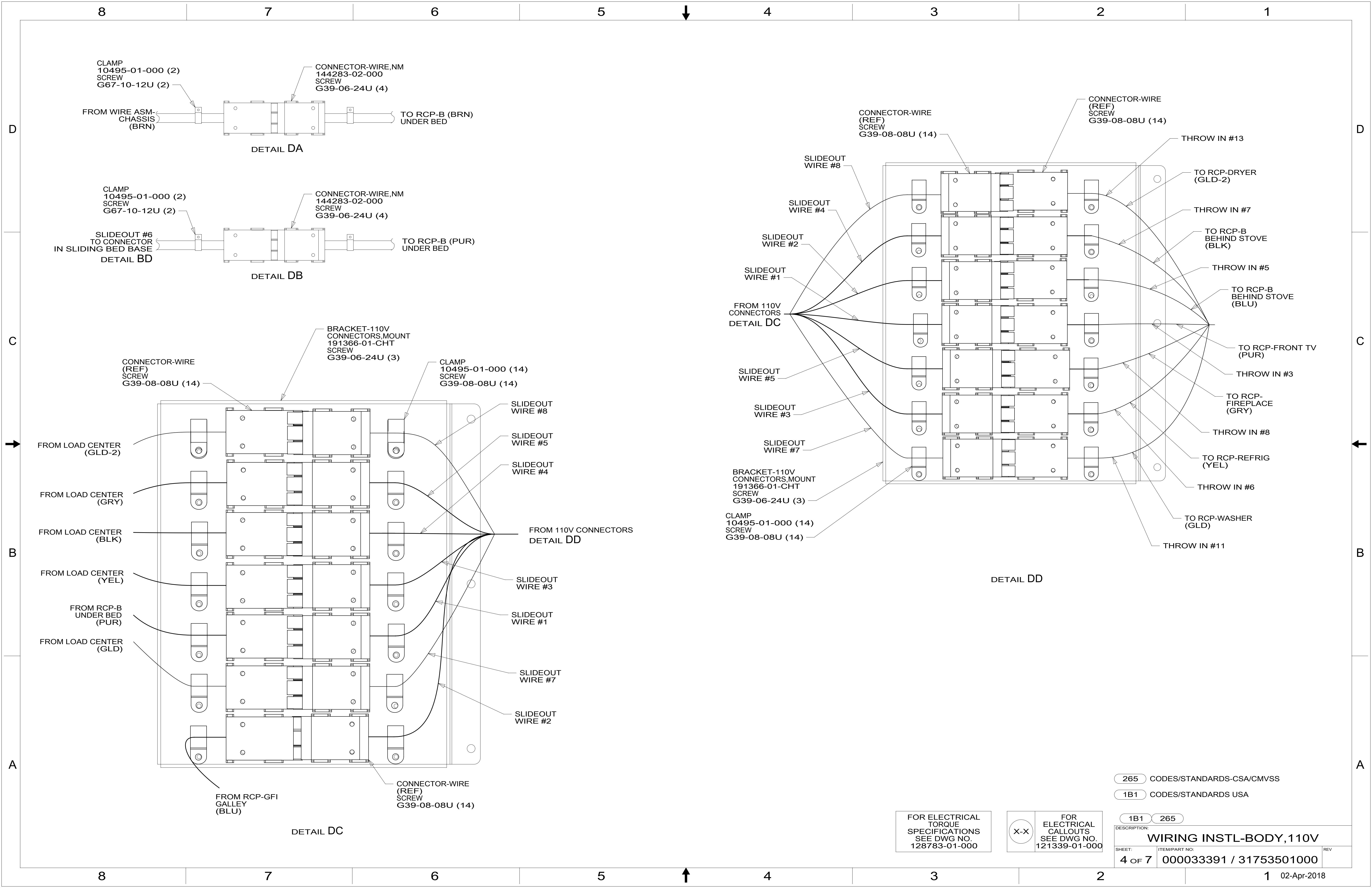
NOTES:

FOR ELECTRICAL TORQUE SPECIFICATIONS SEE DWG NO. 128783-01-000

X-X FOR ELECTRICAL CALLOUTS SEE DWG NO. 121339-01-000

- 1DF EXT TV ENTERTAINMENT CENTER
- 265 CODES/STANDARDS-CSA/CMVSS
- 1B1 CODES/STANDARDS USA

DESCRIPTION:		1B1 265	
WIRING INSTL-BODY, 110V			
SHEET:	ITEM/PART NO.:	REV:	
3 OF 7	000033391 / 31753501000		

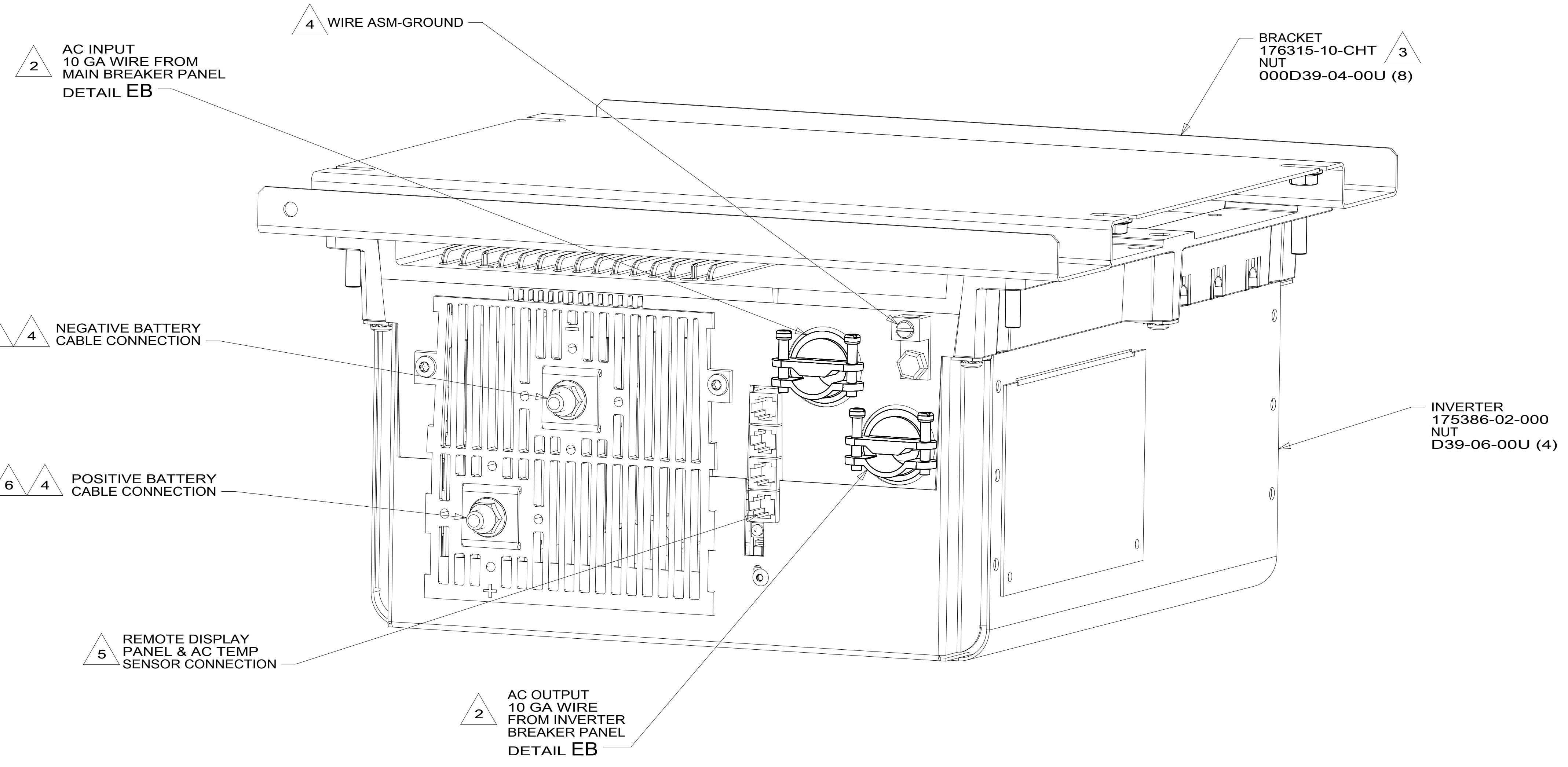


265 CODES/STANDARDS-CSA/CMVSS
 1B1 CODES/STANDARDS USA

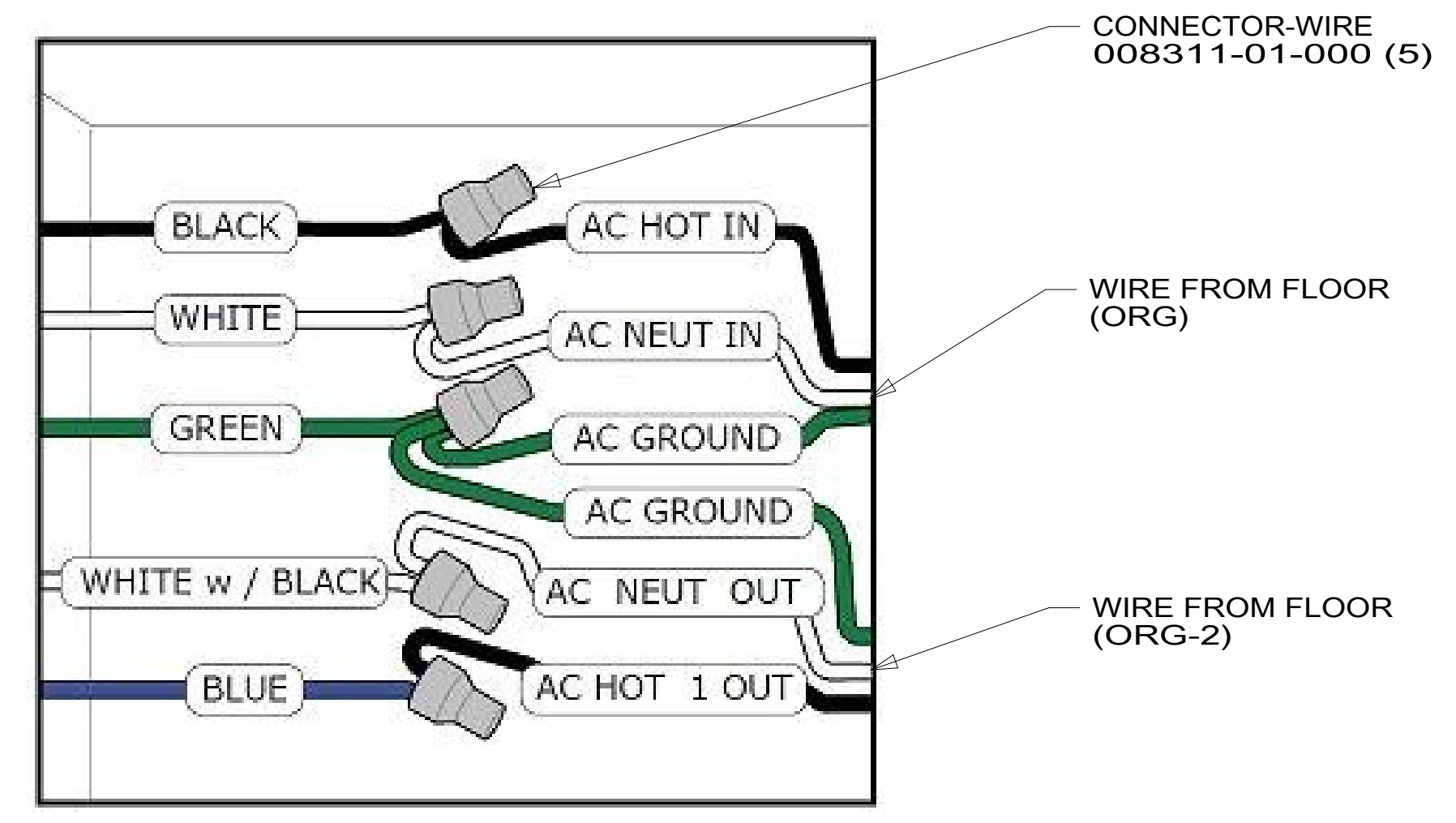
FOR ELECTRICAL TORQUE SPECIFICATIONS SEE DWG NO. 128783-01-000

X-X FOR ELECTRICAL CALLOUTS SEE DWG NO. 121339-01-000

DESCRIPTION:	1B1 265	
WIRING INSTL-BODY, 110V		
SHEET:	ITEM/PART NO.:	REV
4 OF 7	000033391 / 31753501000	



DETAIL EA



DETAIL EB

- 6 DO NOT USE POWER/AIR TOOL IN INSTALL NUT. TORQUE TO 10-12 FT LBS.
- 5 CABLES PART OF WIR ASM-CHASSIS.
- 4 SEE BATTERY INSTL FOR ADDITIONAL INFORMATION.
- 3 BRACKET IS LOCATED BY HOLES ON BRACKET.
- 2 SEE LOAD CENTER/ATS ASM FOR ADDITIONAL INFORMATION.

NOTES:
1. SEE INVERTER/CHARGER OWNER'S MANUAL FOR ADDITIONAL INFORMATION.

265 CODES/STANDARDS-CSA/CMVSS
1B1 CODES/STANDARDS USA

FOR ELECTRICAL
TORQUE
SPECIFICATIONS
SEE DWG NO.
128783-01-000

X-X
FOR ELECTRICAL
CALLOUTS
SEE DWG NO.
121339-01-000

DESCRIPTION: WIRING INSTL-BODY, 110V	
SHEET: 5 OF 7	ITEM/PART NO: 000033391 / 31753501000
REV 1 02-Apr-2018	

