

RED	1B1	136135-07-052	
	265	136136-07-052	
YEL	1B1	136131-05-012	
	265	136134-05-012	
YEL-2	1B1	136131-13-062	
	265	136134-13-062	
BLK	1B1	136131-06-020	4
	265	136134-06-020	4
BRN	1B1	136131-03-030	4
	265	136134-03-030	4
BLU	1B1	136131-02-150	
	265	136134-02-150	
GRN	1B1	136135-08-052	
	265	136136-08-052	
PUR	1B1	136131-04-060	4
	265	136134-04-060	4
WHT	1B1	136135-09-043	
	265	136136-09-043	
MAIN	1B1	136139-01-030	
	265	136140-01-030	
GROUND MAIN		136145-01-015	
GROUND ATS		136145-01-015	
GRY	1B1	136131-15-020	4
	265	136134-15-020	4
GLD	1B1	136131-10-061	
	265	136134-10-061	
GLD-2	1B1	136131-20-061	
	265	136134-20-061	

SLIDEOUT WIRE #1		136151-12-021	5
THROW IN WIRE #1	1B1	136131-03-006	4
	265	136134-03-006	4
THROW IN WIRE #2	1B1	136131-12-024	1DF
	265	136134-12-024	1DF
THROW IN WIRE #3	1B1	136131-04-011	4 7 401
	265	136134-04-011	4 7 401
THROW IN WIRE #4	1B1	136131-12-011	4 7 401
	265	136134-12-011	4 7 401
THROW IN WIRE #5	1B1	136131-15-032	4
	265	136134-15-032	4
THROW IN WIRE #6	1B1	136131-12-174	6
	265	136134-12-174	6
THROW IN WIRE #7	1B1	136131-03-058	6
	265	136134-03-058	6
THROW IN WIRE #8	1B1	136131-12-006	4
	265	136134-12-006	4
THROW IN WIRE #9	1B1	136131-03-033	
	265	136134-03-033	

- 7 SEE DETAIL CD FOR CONNECTOR INSTALLATION.
- 6 SEE DETAIL CC FOR CONNECTOR INSTALLATION.
- 5 SEE DETAIL CB FOR CONNECTOR INSTALLATION.
- 4 SEE DETAIL CA FOR CONNECTOR INSTALLATION.
- 3. SEE WIRING INSTL-BODY, 12V FOR ADDITIONAL INFORMATION.
- 2. SECURE WIRES TO BACKSIDE OF LOAD CENTER WITH WIRE TIE 116673-01-000.
- 1. ALL GROUNDS WIRES TO BE COVERED WITH TUBING 8041-02-000.

NOTES:

- 401 INVERTER-DC/AC, 1000 WATT
- 1DF EXT TV ENTERTAINMENT CENTER
- 265 CODES/STANDARDS-CSA/CMVSS
- 1B1 CODES/STANDARDS USA

WINNEBAGO
COPYRIGHT 2016 WINNEBAGO INDUSTRIES, INC.

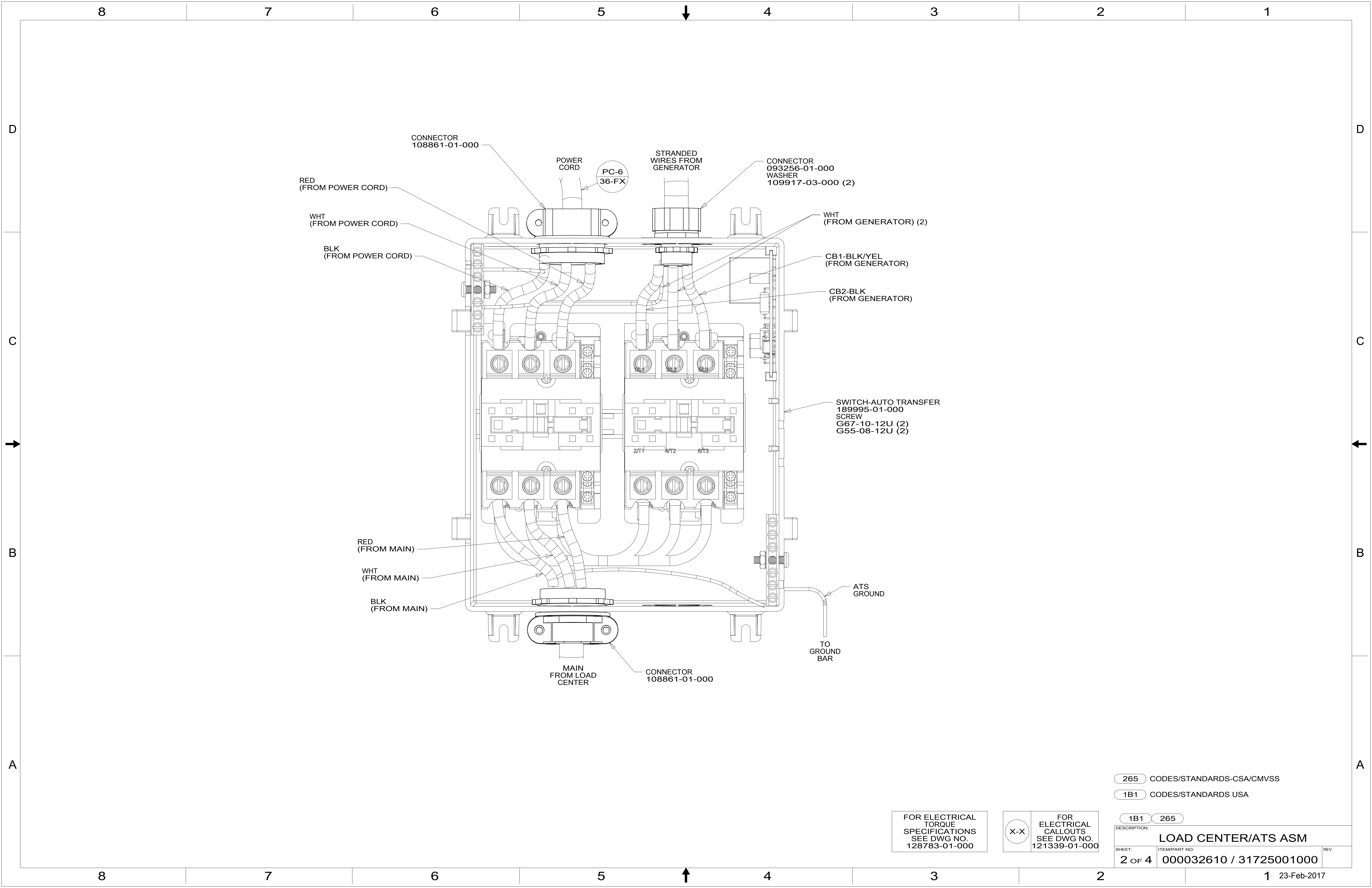
DSNR:	ALL DIMENSIONS ARE IN MILLIMETERS
DFFR:	
UNSPECIFIED TOLERANCES:	MATERIAL:
WHOLE DIM (X) : 3	
ONE-PLACE (X.X) : 1.5	
TWO-PLACE (X.XX) : 0.50	
ANGLE : 1°	
REFER TO ES0018 FOR FASTENER TIGHTENING GUIDELINES	WEIGHT: (LBS) FIRST USED: 17 D35G
DESCRIPTION: LOAD CENTER/ATS ASM	
SHEET: 1 OF 4	ITEM/PART NO: 000032610 / 31725001000
REF:	1 23-Feb-2017

FOR ELECTRICAL TORQUE SPECIFICATIONS SEE DWG NO. 128783-01-000

FOR ELECTRICAL CALLOUTS SEE DWG NO. 121339-01-000

D
C
B
A

D
C
B
A



265 CODES/STANDARDS-CSA/CMVSS

1B1 CODES/STANDARDS USA

1B1 265

DESCRIPTION: **LOAD CENTER/ATS ASM**

SHEET: 2 OF 4 ITEM/PART NO: 000032610 / 31725001000 REV

FOR ELECTRICAL TORQUE SPECIFICATIONS SEE DWG NO. 128783-01-000

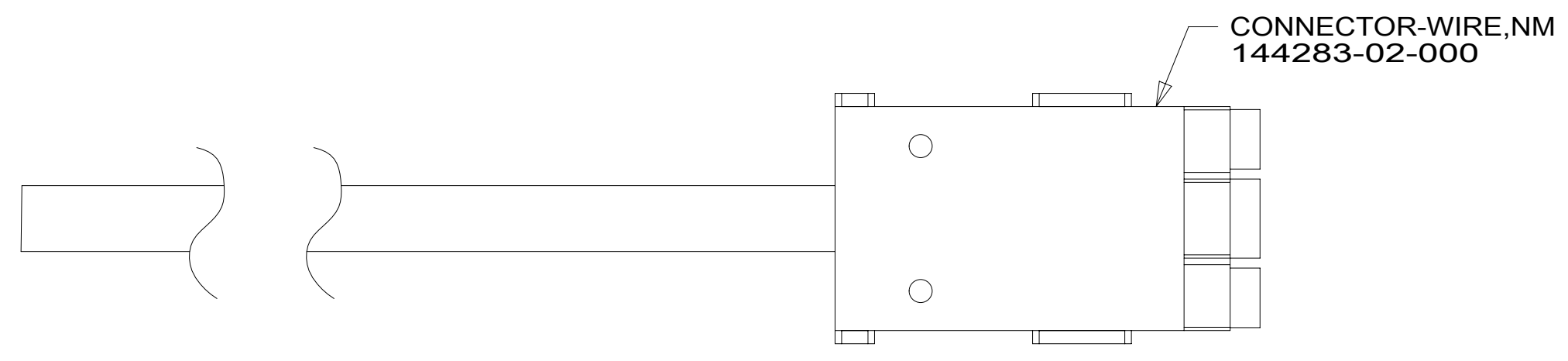
FOR ELECTRICAL CALLOUTS SEE DWG NO. 121339-01-000

8 7 6 5 4 3 2 1

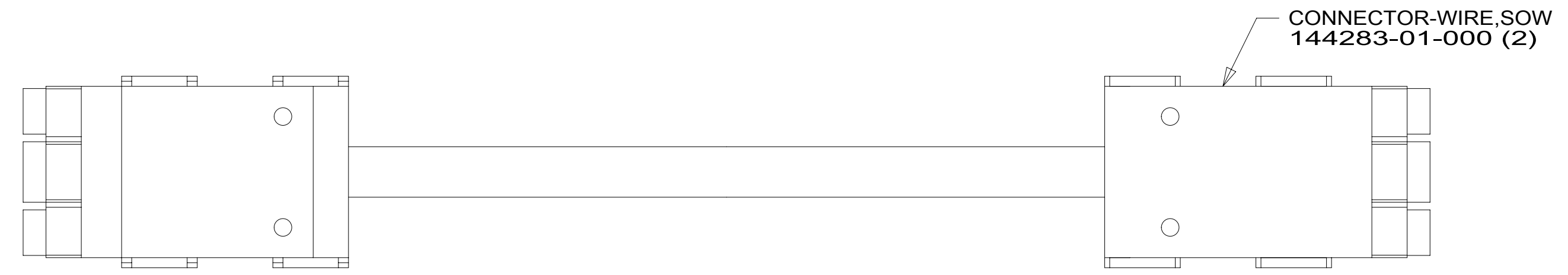


D

D



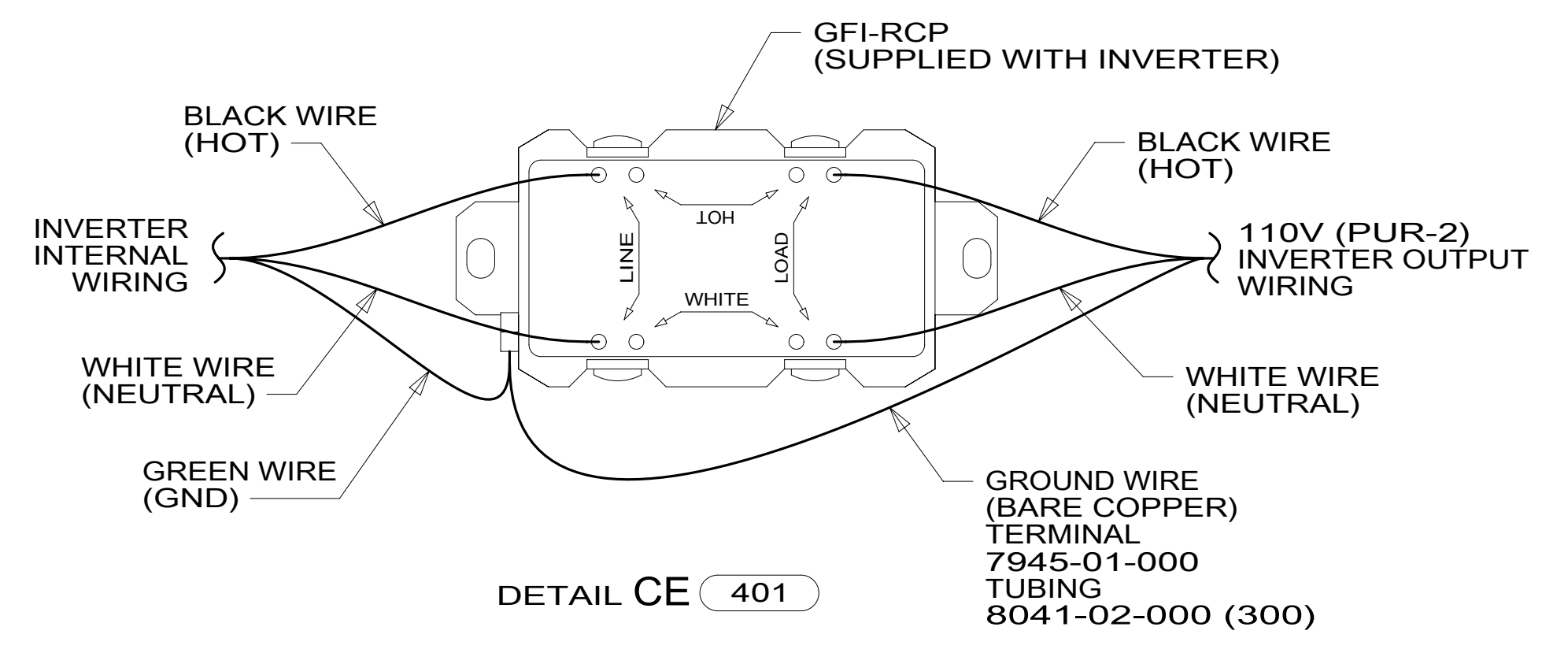
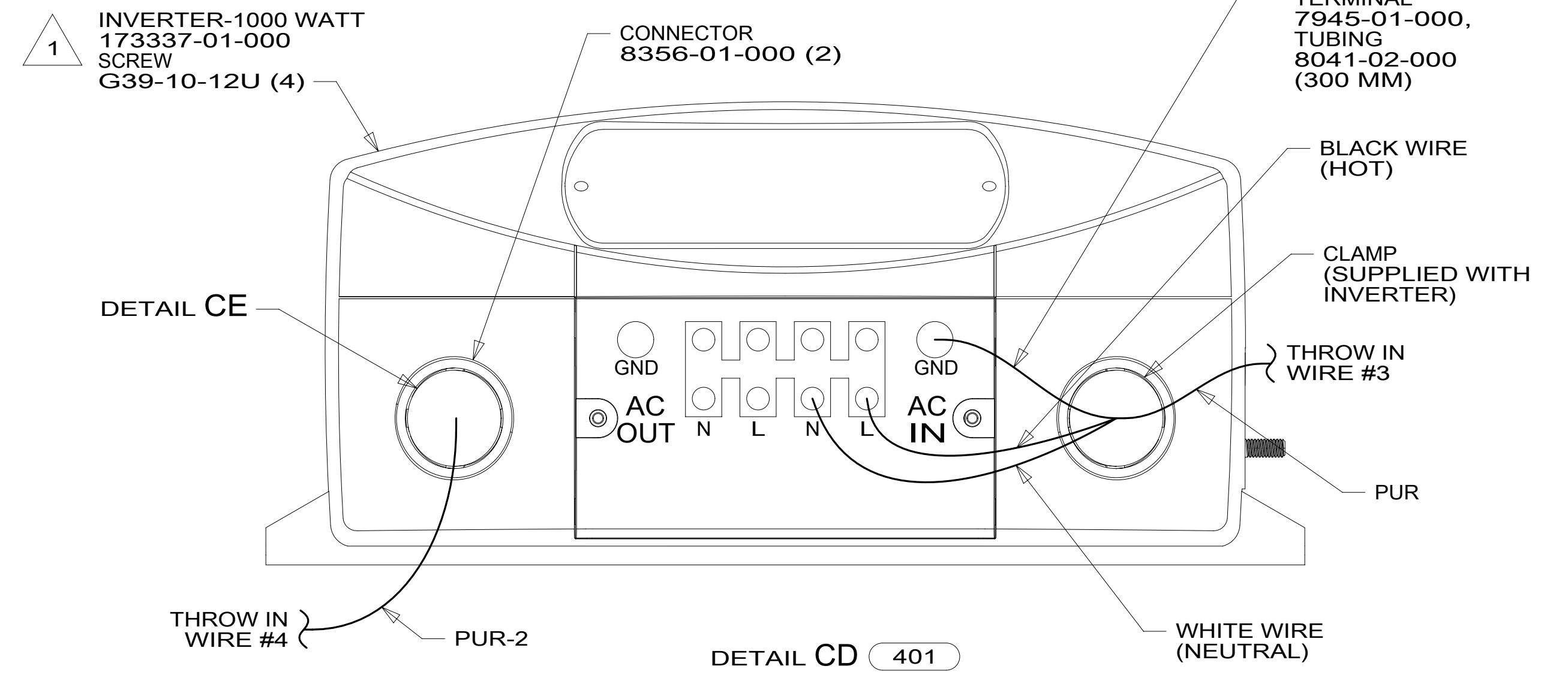
DETAIL CA



DETAIL CB



DETAIL CC



NOTES:

1 INVERTER SUPPLIED WITH REMOTE PANEL.
SEND PANEL TO MANUFACTURING LINE.

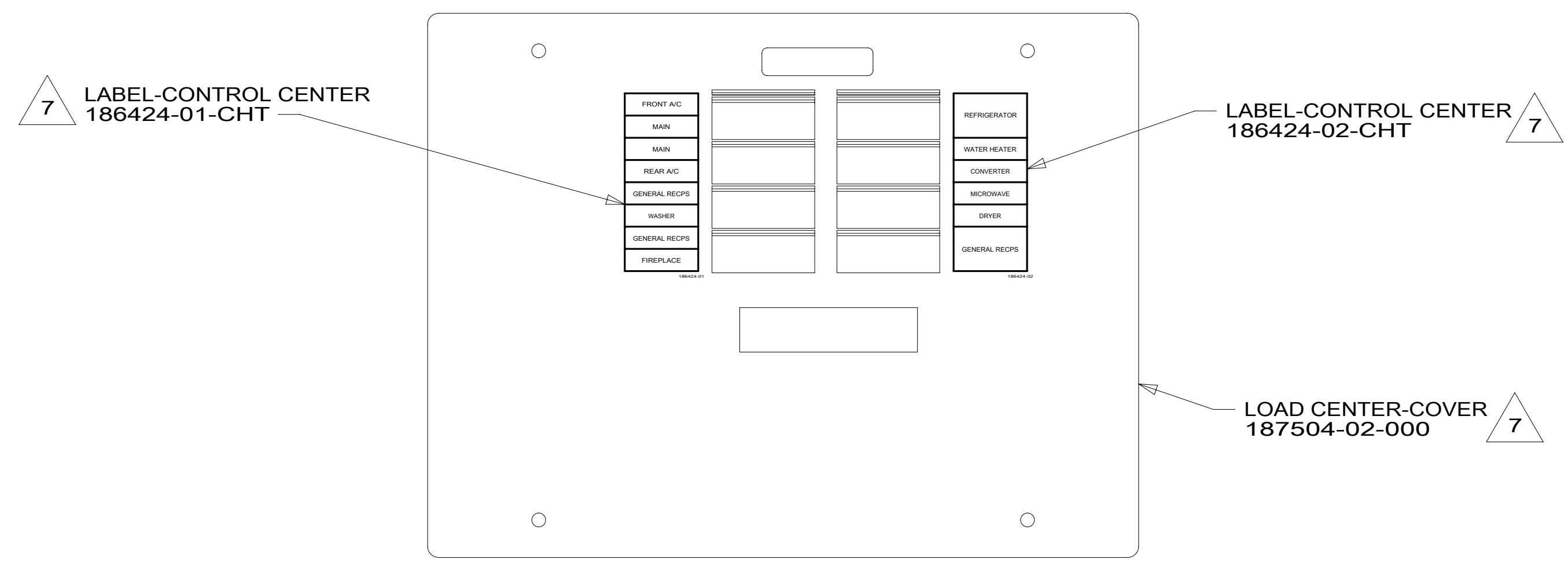
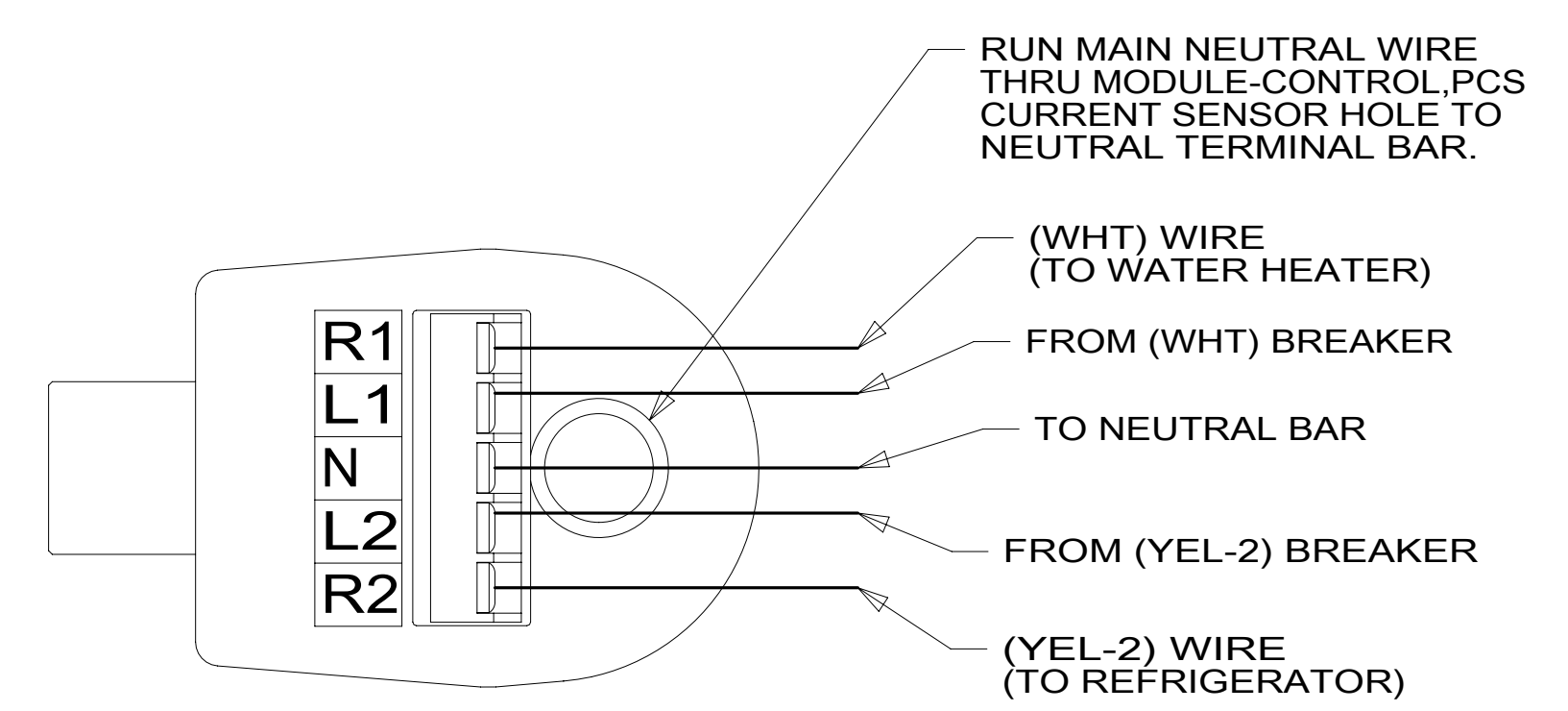
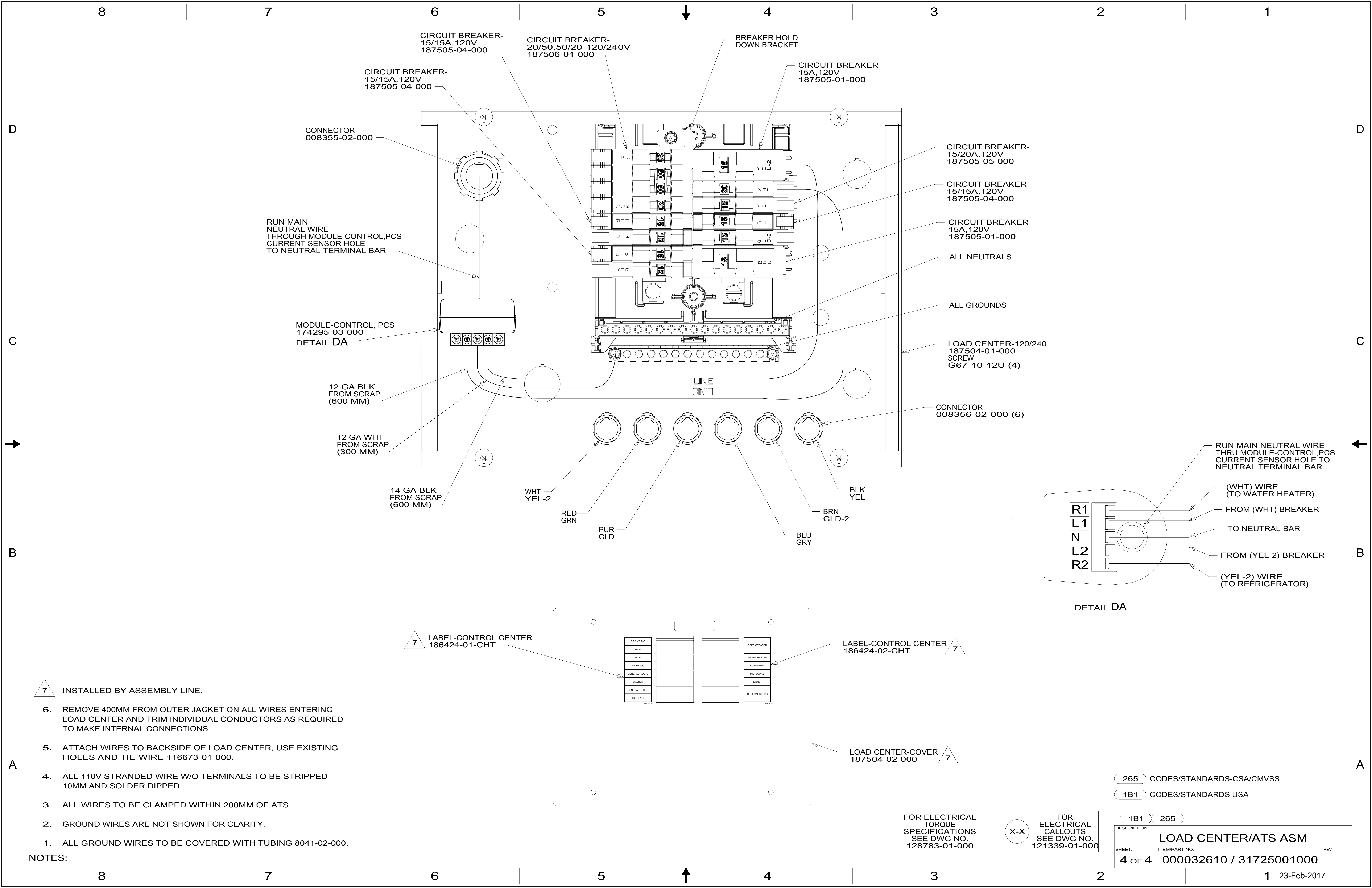
FOR ELECTRICAL
TORQUE
SPECIFICATIONS
SEE DWG NO.
128783-01-000

FOR
ELECTRICAL
CALLOUTS
SEE DWG NO.
121339-01-000

- 401 INVERTER-DC/AC, 1000 WATT
- 265 CODES/STANDARDS-CSA/CMVSS
- 1B1 CODES/STANDARDS USA

DESCRIPTION:		1B1 265	
LOAD CENTER/ATS ASM			
SHEET:	ITEM/PART NO.:	REV	
3 OF 4	000032610 / 31725001000		

8 7 6 5 4 3 2 1 23-Feb-2017



- NOTES:**
- 7 INSTALLED BY ASSEMBLY LINE.
 - 6. REMOVE 400MM FROM OUTER JACKET ON ALL WIRES ENTERING LOAD CENTER AND TRIM INDIVIDUAL CONDUCTORS AS REQUIRED TO MAKE INTERNAL CONNECTIONS
 - 5. ATTACH WIRES TO BACKSIDE OF LOAD CENTER, USE EXISTING HOLES AND TIE-WIRE 116673-01-000.
 - 4. ALL 110V STRANDED WIRE W/O TERMINALS TO BE STRIPPED 10MM AND SOLDER DIPPED.
 - 3. ALL WIRES TO BE CLAMPED WITHIN 200MM OF ATS.
 - 2. GROUND WIRES ARE NOT SHOWN FOR CLARITY.
 - 1. ALL GROUND WIRES TO BE COVERED WITH TUBING 8041-02-000.

FOR ELECTRICAL TORQUE SPECIFICATIONS SEE DWG NO. 128783-01-000

FOR ELECTRICAL CALLOUTS SEE DWG NO. 121339-01-000

265	CODES/STANDARDS-CSA/CMVSS
1B1	CODES/STANDARDS USA
1B1	265
DESCRIPTION: LOAD CENTER/ATS ASM	
SHEET: 4 OF 4	ITEM/PART NO: 000032610 / 31725001000
REV 1 23-Feb-2017	