

VIEW AA

(BLU) 2000 DROP TO BATH RCP
 (PUR-2) 8200 DROP THRU BATH OVHD CABT BLANK TO RCP-B UNDER BED TO SOW CONNECTOR UNDER BED

110V WIRES FROM LOAD CENTER
 ROUTE GROUND WIRE FROM LOAD CENTER THROUGH FLOOR IN THIS AREA AND CONNECT TO FRAME RAIL

THROW IN WIRE #3 (PUR)
 THROW IN WIRE #4 (PUR-2)

RCP-2 (BLU) EXT COMPT

COVER-ELECTRICAL
 191671-02-CHT SCREW
 G11-08-12T (6)
 COVER-WIRE
 176981-16-CHT SCREW
 G11-08-12U (2)

(GLD, GLD-1) 2800 DROP TO WASHER/DRYER
 (BLU) 6000 LOOP THRU GFI, THRU EXTERIOR RCP
 (YEL-2) 2300 DROP TO REFRIGERATOR
 (PUR) 2500 DROP TO INVERTER
 (PUR-2) 6200 DROP THRU BDRM TV RCP TO INVERTER

(WHT) 1000 DROP TO WATER HEATER

110V SOW CORDS FROM WIRE ASM-CHASSIS

- 401 INVERTER-DC/AC, 1000 WATT
- 265 CODES/STANDARDS-CSA/CMVSS
- 1B1 CODES/STANDARDS USA

WINNEBAGO
 COPYRIGHT 2016 WINNEBAGO INDUSTRIES, INC.

DSNR:	ALL DIMENSIONS ARE IN MILLIMETERS
DFFR:	
UNSPECIFIED TOLERANCES:	MATERIAL:
WHOLE DIM (X) : 3	
ONE-PLACE (X.X) : 1.5	
TWO-PLACE (X.XX) : 0.50	
ANGLE : 1°	
REFER TO ES0018 FOR FASTENER TIGHTENING GUIDELINES	WEIGHT: (LBS) FIRST USED:
	17 D35G

WIRING INSTL-BODY, 110V

SHEET: 1 OF 6	ITEM/PART NO: 000032549 / 31723401000	REV:
REF: 1		23-Feb-2017

5. AT MINIMUM ALL WIRES TO BE SUPPORTED AND SECURED PER CODE REQUIREMENTS. USE CLAMP 10495 OR 10497 OR WIRE TIE 8343 OR 108046 AND SCREW G67-XX-XXX OR G56-XX-XXX AS APPROPRIATE FOR INSTALLATION.

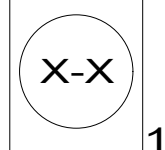
- 4 WIRE ROUTED THROUGH FLOOR IN THIS AREA.
- 3 WITHOUT INVERTER THROW IN #2 (PUR-2) CONNECTS TO (PUR) FROM LOAD CENTER.
- 2 SEE LOAD CENTER/ATS ASM FOR ADDITIONAL INFORMATION.

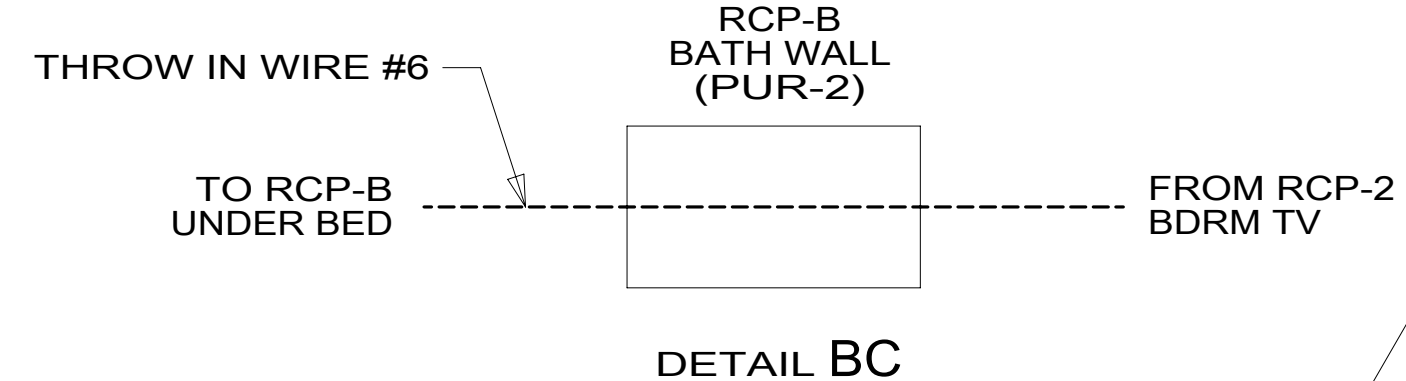
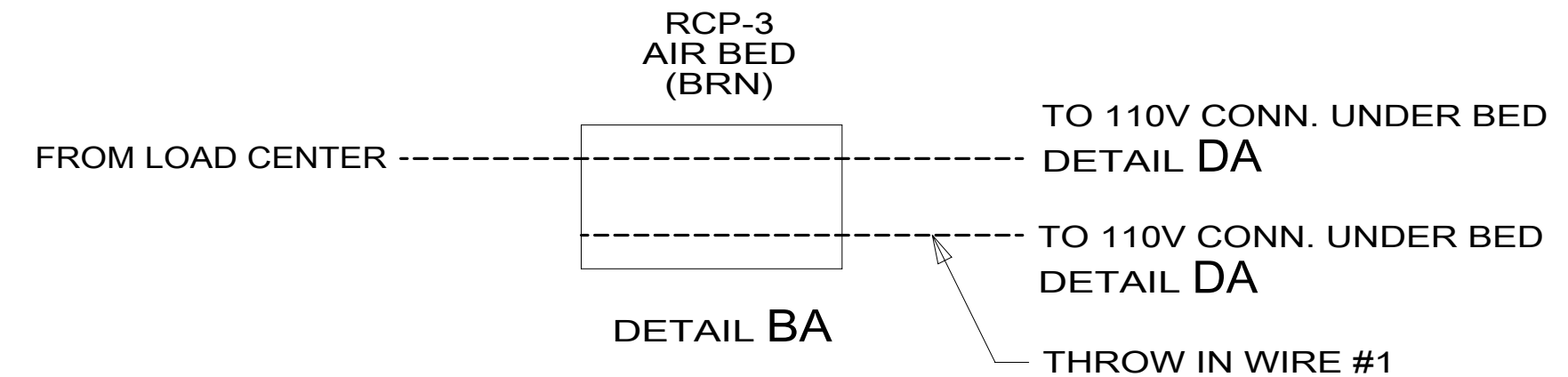
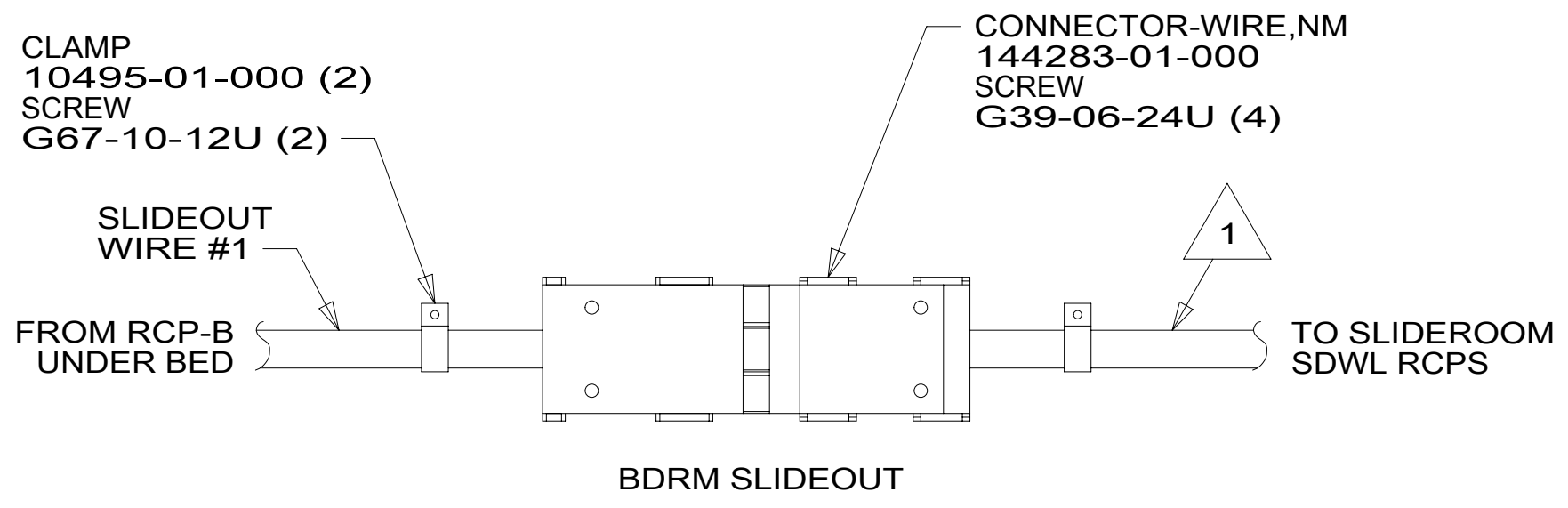
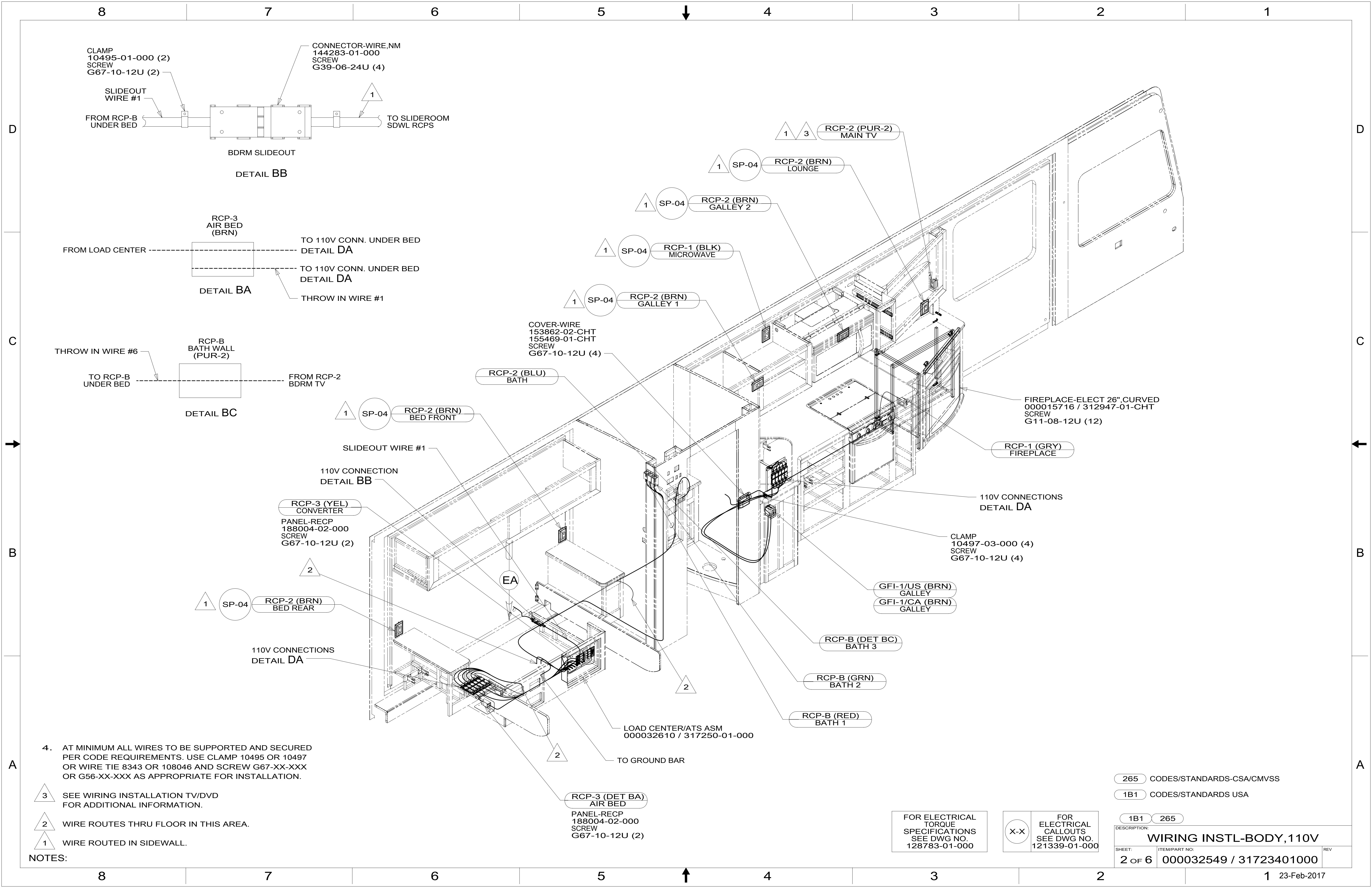
1. WIRES ROUTED UNDER FLOOR.

NOTES:

FOR ELECTRICAL TORQUE SPECIFICATIONS SEE DWG NO. 128783-01-000

FOR ELECTRICAL CALLOUTS SEE DWG NO. 121339-01-000





4. AT MINIMUM ALL WIRES TO BE SUPPORTED AND SECURED PER CODE REQUIREMENTS. USE CLAMP 10495 OR 10497 OR WIRE TIE 8343 OR 108046 AND SCREW G67-XX-XXX OR G56-XX-XXX AS APPROPRIATE FOR INSTALLATION.

- 3 SEE WIRING INSTALLATION TV/DVD FOR ADDITIONAL INFORMATION.
- 2 WIRE ROUTES THRU FLOOR IN THIS AREA.
- 1 WIRE ROUTED IN SIDEWALL.

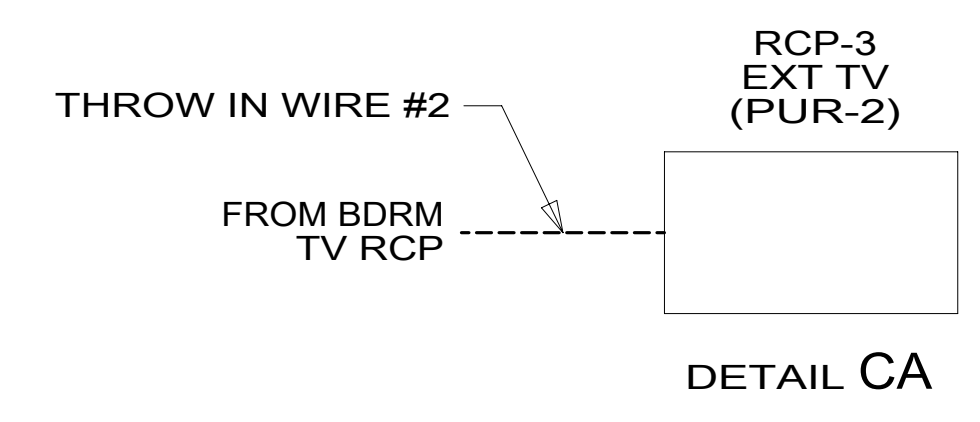
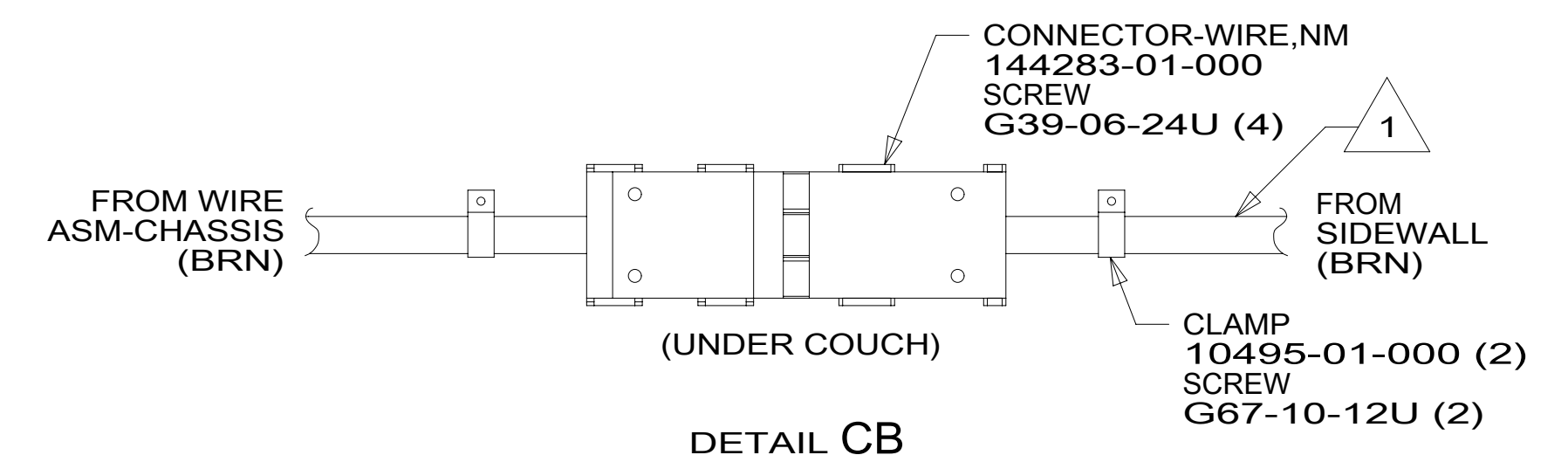
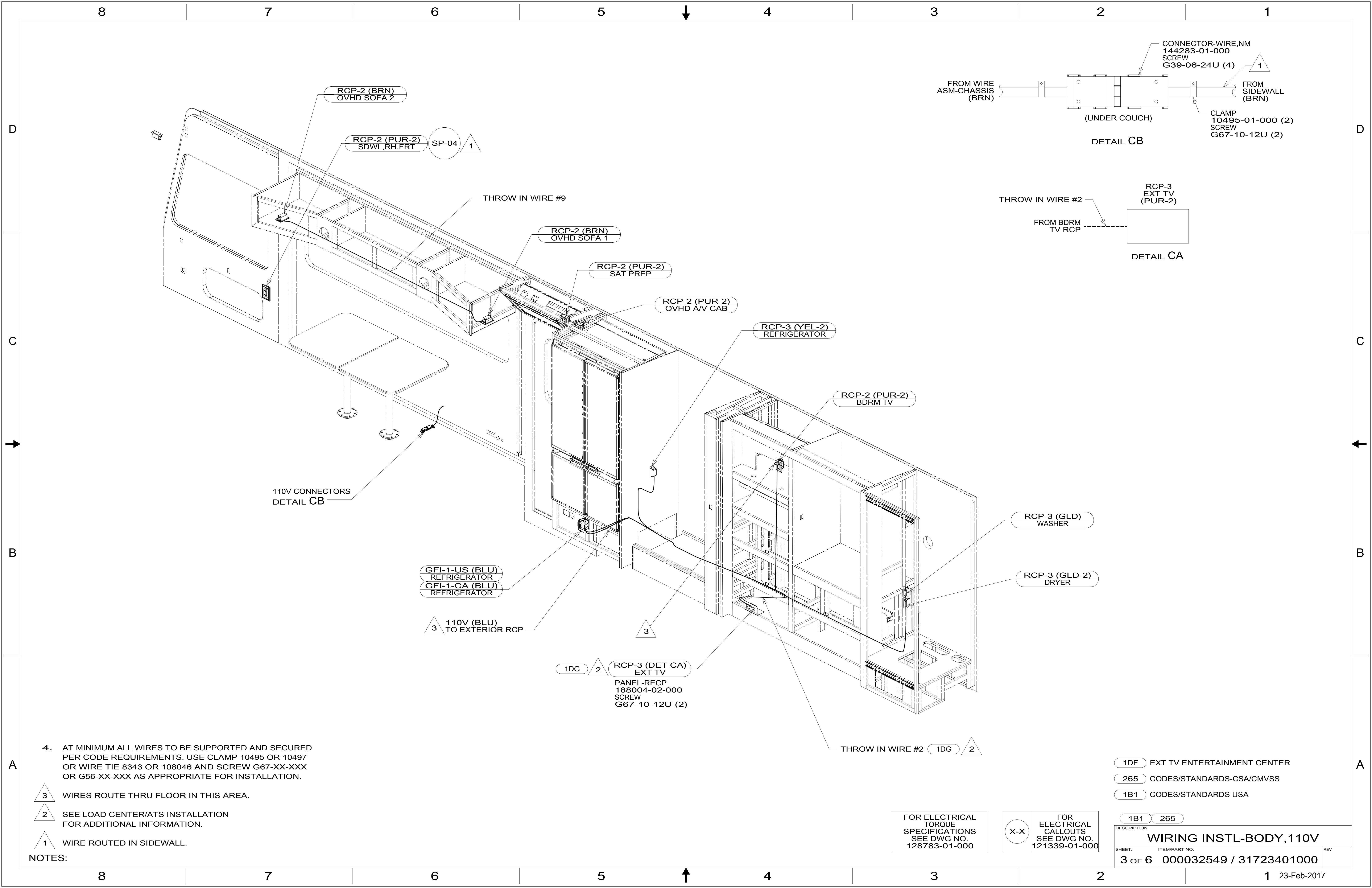
NOTES:

265 CODES/STANDARDS-CSA/CMVSS
1B1 CODES/STANDARDS USA

FOR ELECTRICAL TORQUE SPECIFICATIONS SEE DWG NO. 128783-01-000

FOR ELECTRICAL CALLOUTS SEE DWG NO. 121339-01-000

DESCRIPTION:		1B1 265	
WIRING INSTL-BODY, 110V			
SHEET:	ITEM/PART NO.:	REV:	
2 OF 6	000032549 / 31723401000		



4. AT MINIMUM ALL WIRES TO BE SUPPORTED AND SECURED PER CODE REQUIREMENTS. USE CLAMP 10495 OR 10497 OR WIRE TIE 8343 OR 108046 AND SCREW G67-XX-XXX OR G56-XX-XXX AS APPROPRIATE FOR INSTALLATION.

- 3 WIRES ROUTE THRU FLOOR IN THIS AREA.
- 2 SEE LOAD CENTER/ATS INSTALLATION FOR ADDITIONAL INFORMATION.
- 1 WIRE ROUTED IN SIDEWALL.

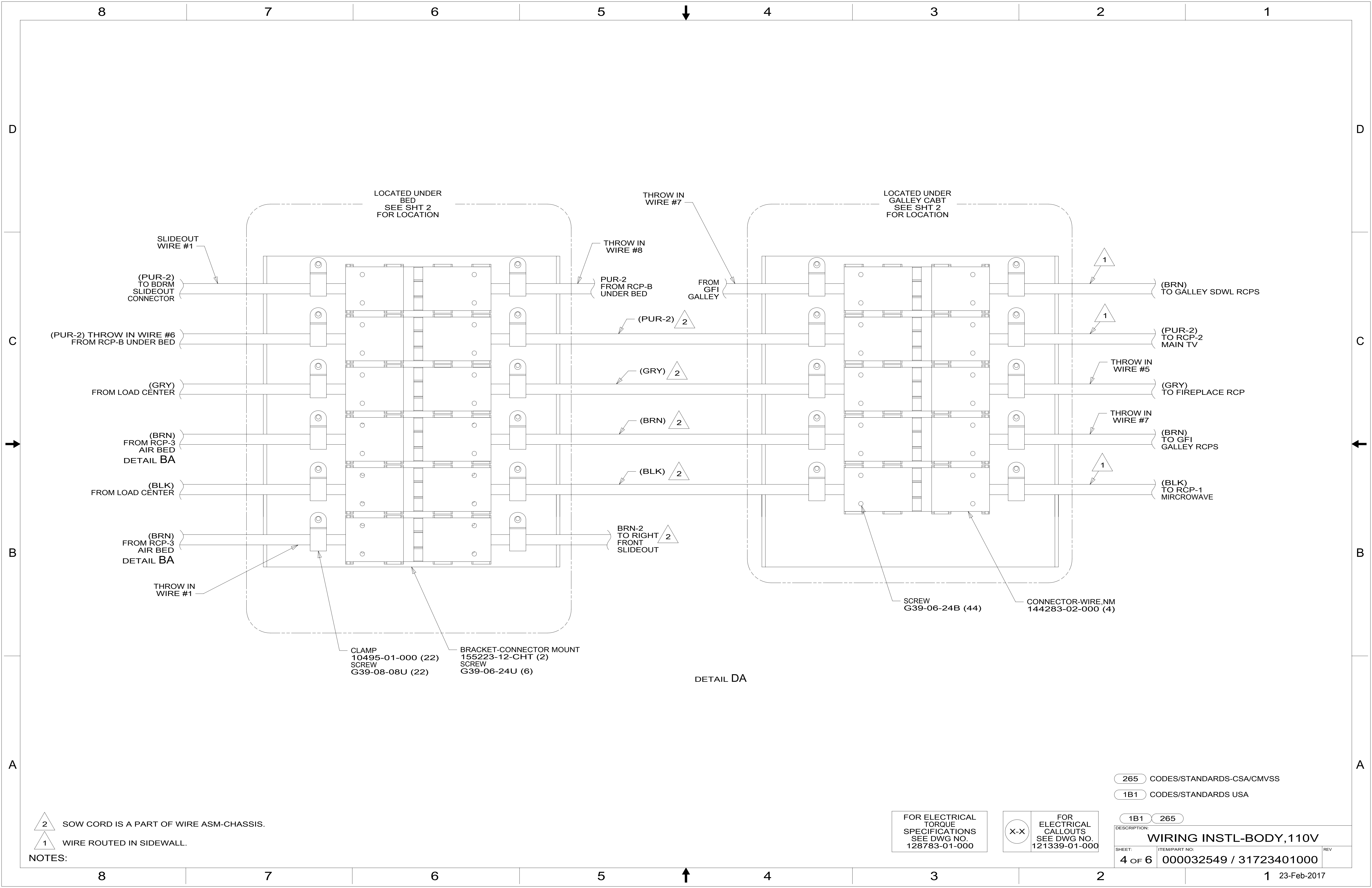
NOTES:

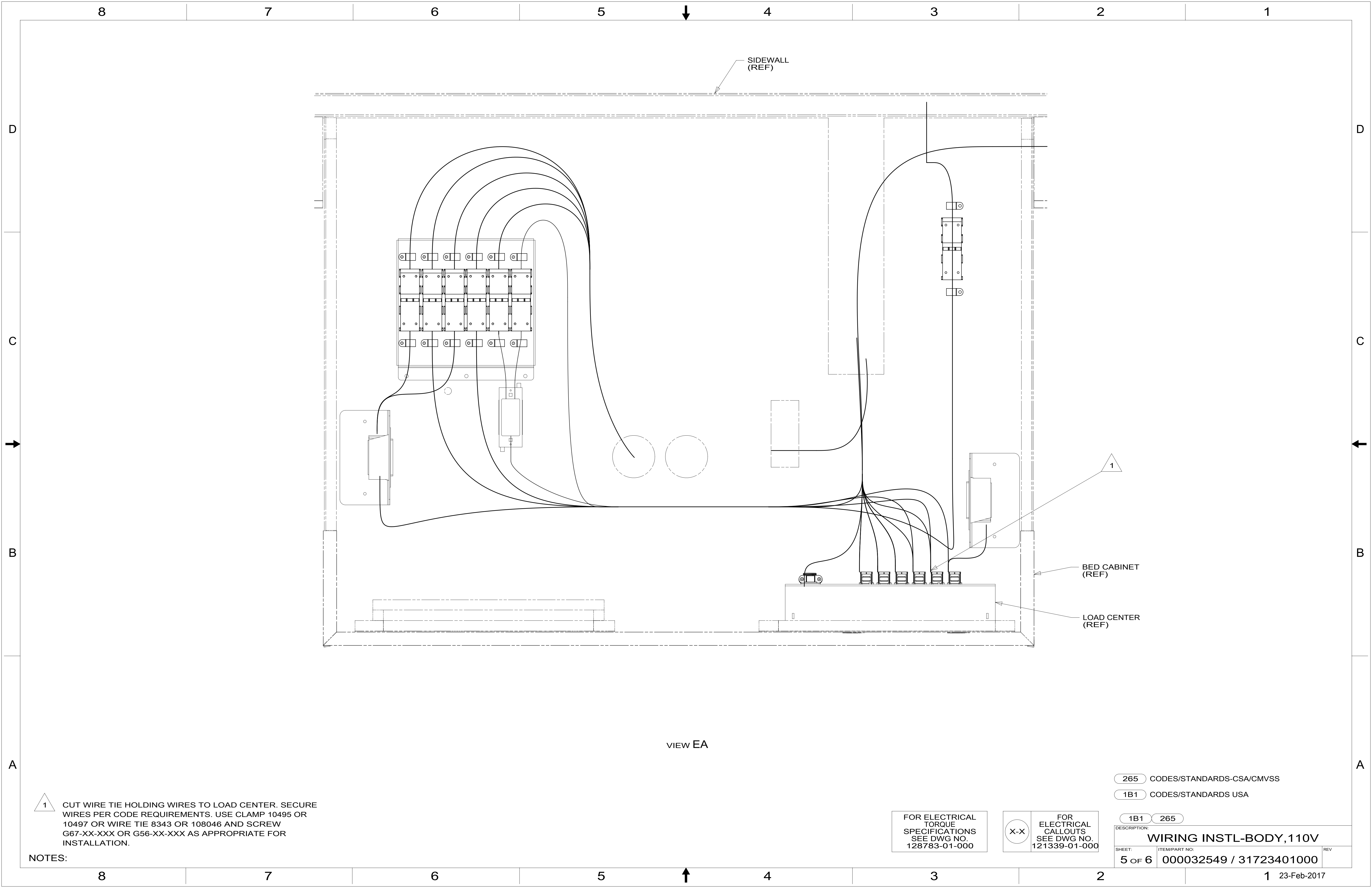
FOR ELECTRICAL TORQUE SPECIFICATIONS SEE DWG NO. 128783-01-000

FOR ELECTRICAL CALLOUTS SEE DWG NO. 121339-01-000

- 1DF EXT TV ENTERTAINMENT CENTER
- 265 CODES/STANDARDS-CSA/CMVSS
- 1B1 CODES/STANDARDS USA

DESCRIPTION: WIRING INSTL-BODY, 110V		
SHEET: 3 OF 6	ITEM/PART NO: 000032549 / 31723401000	REV





VIEW EA

1 CUT WIRE TIE HOLDING WIRES TO LOAD CENTER. SECURE WIRES PER CODE REQUIREMENTS. USE CLAMP 10495 OR 10497 OR WIRE TIE 8343 OR 108046 AND SCREW G67-XX-XXX OR G56-XX-XXX AS APPROPRIATE FOR INSTALLATION.

NOTES:

265 CODES/STANDARDS-CSA/CMVSS

1B1 CODES/STANDARDS USA

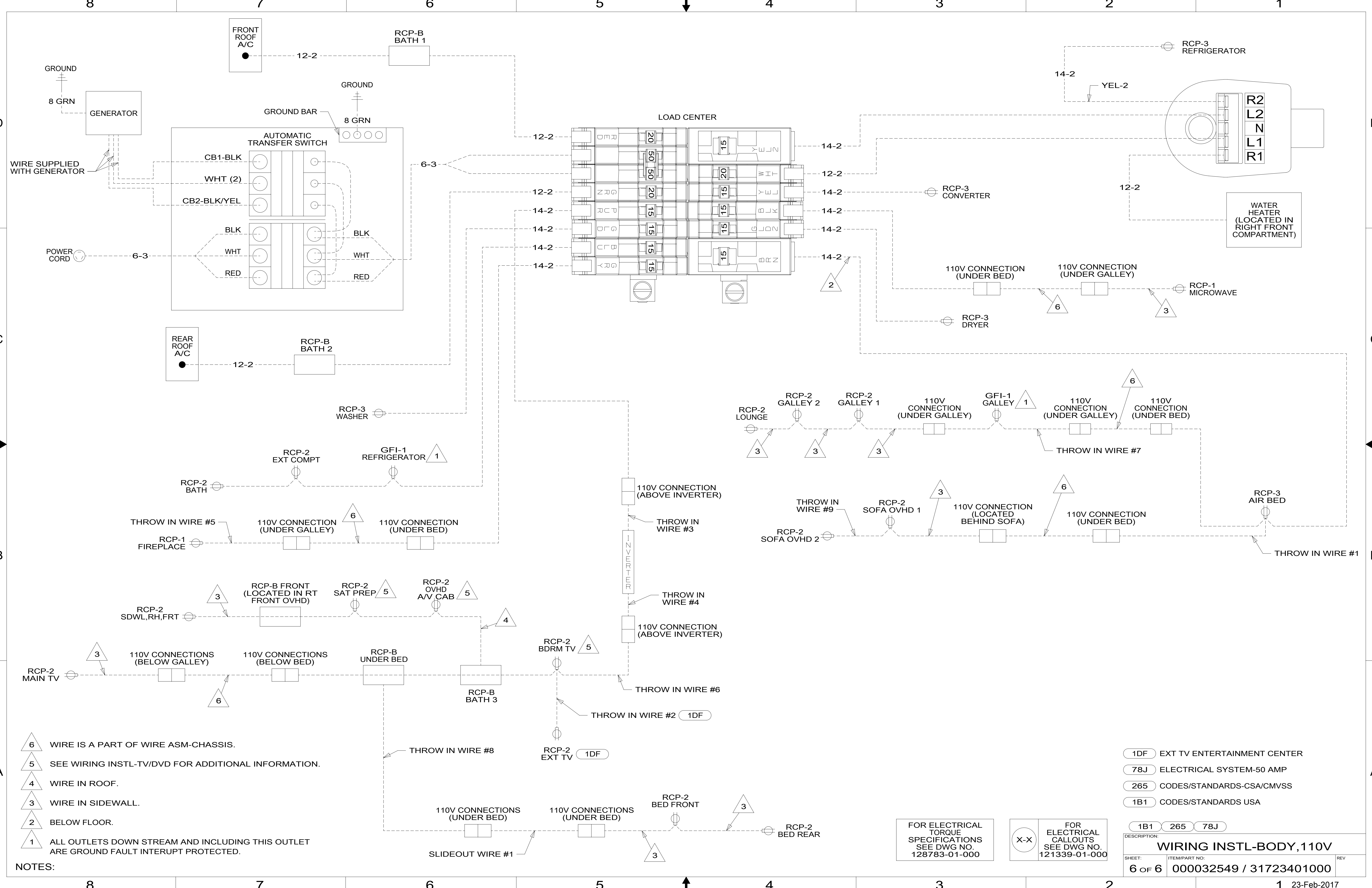
1B1 265

FOR ELECTRICAL TORQUE SPECIFICATIONS SEE DWG NO. 128783-01-000

FOR ELECTRICAL CALLOUTS SEE DWG NO. 121339-01-000

DESCRIPTION:
WIRING INSTL-BODY, 110V

SHEET: 5 OF 6 ITEM/PART NO: 000032549 / 31723401000 REV



- NOTES:
- ▲6 WIRE IS A PART OF WIRE ASM-CHASSIS.
 - ▲5 SEE WIRING INSTL-TV/DVD FOR ADDITIONAL INFORMATION.
 - ▲4 WIRE IN ROOF.
 - ▲3 WIRE IN SIDEWALL.
 - ▲2 BELOW FLOOR.
 - ▲1 ALL OUTLETS DOWN STREAM AND INCLUDING THIS OUTLET ARE GROUND FAULT INTERRUPT PROTECTED.

- 1DF EXT TV ENTERTAINMENT CENTER
- 78J ELECTRICAL SYSTEM-50 AMP
- 265 CODES/STANDARDS-CSA/CMVSS
- 1B1 CODES/STANDARDS USA

FOR ELECTRICAL TORQUE SPECIFICATIONS SEE DWG NO. 128783-01-000

FOR ELECTRICAL CALLOUTS SEE DWG NO. 121339-01-000

DESCRIPTION: WIRING INSTL-BODY, 110V		
SHEET: 6 OF 6	ITEM/PART NO: 000032549 / 31723401000	REV