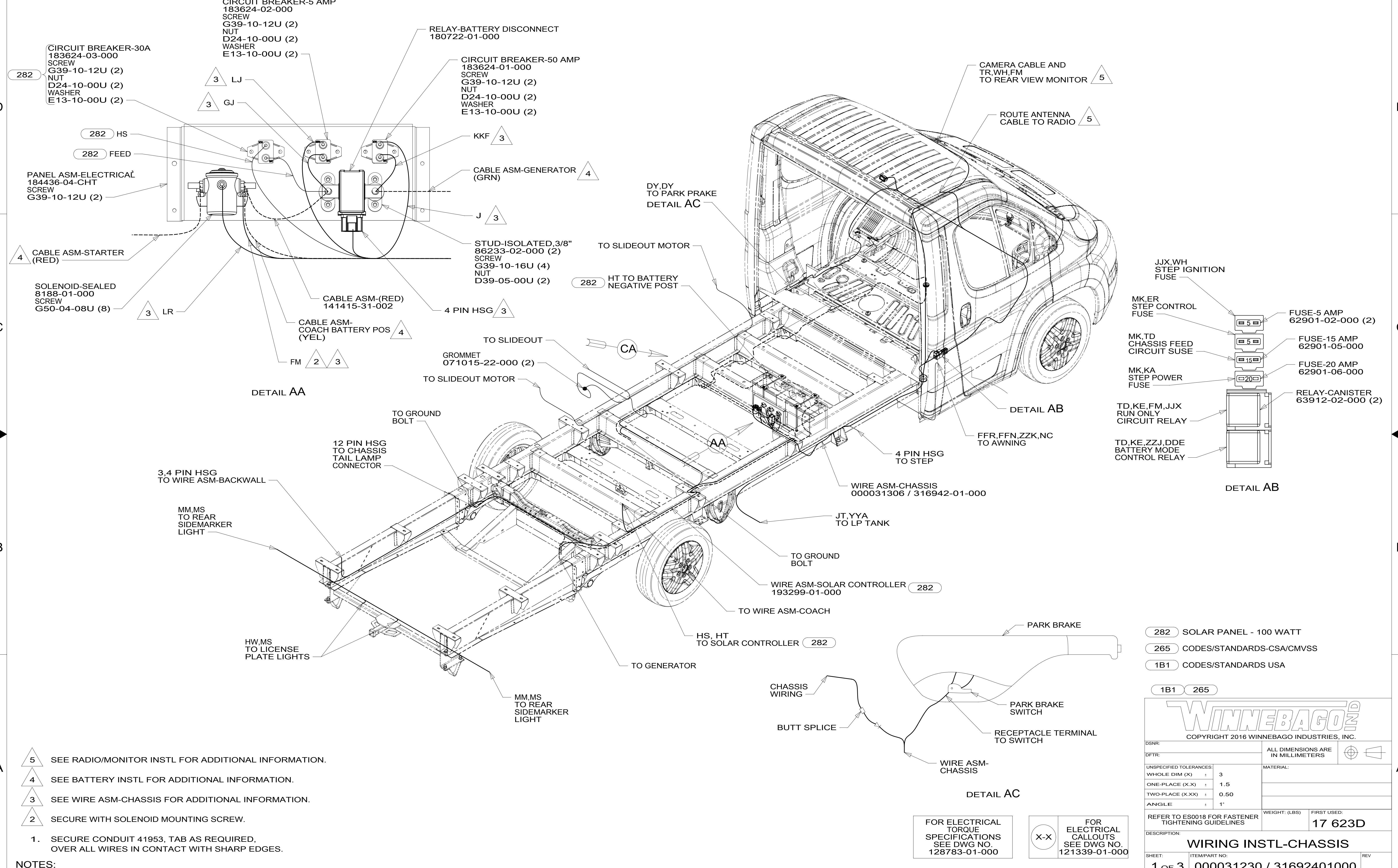


8 7 6 5 4 3 2 1



8 7 6 5 4 3 2 1

- NOTES:
- 5 SEE RADIO/MONITOR INSTL FOR ADDITIONAL INFORMATION.
  - 4 SEE BATTERY INSTL FOR ADDITIONAL INFORMATION.
  - 3 SEE WIRE ASM-CHASSIS FOR ADDITIONAL INFORMATION.
  - 2 SECURE WITH SOLENOID MOUNTING SCREW.
  - 1. SECURE CONDUIT 41953, TAB AS REQUIRED, OVER ALL WIRES IN CONTACT WITH SHARP EDGES.

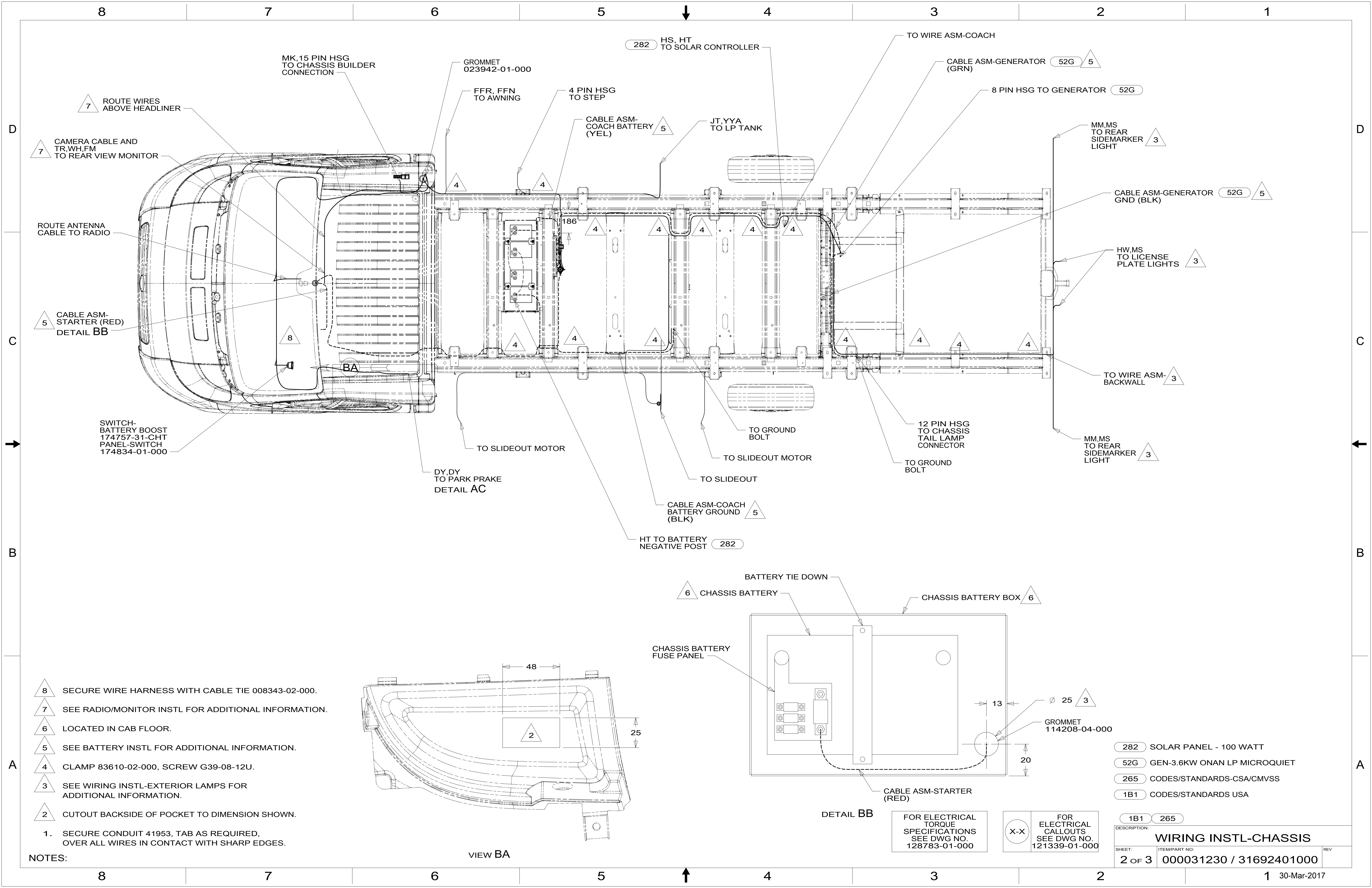
- 282 SOLAR PANEL - 100 WATT
- 265 CODES/STANDARDS-CSA/CMVSS
- 1B1 CODES/STANDARDS USA

**WINNEBAGO**  
COPYRIGHT 2016 WINNEBAGO INDUSTRIES, INC.

DSNR:	ALL DIMENSIONS ARE IN MILLIMETERS	
DFFR:		
UNSPECIFIED TOLERANCES:	MATERIAL:	
WHOLE DIM (X) ± 3		
ONE-PLACE (X.X) ± 1.5		
TWO-PLACE (X.XX) ± 0.50		
ANGLE ± 1°		
REFER TO ES0018 FOR FASTENER TIGHTENING GUIDELINES	WEIGHT: (LBS)	FIRST USED: 17 623D
DESCRIPTION: <b>WIRING INSTL-CHASSIS</b>		
SHEET: 1 OF 3	ITEM/PART NO: 000031230 / 31692401000	REV
REF: 1		30-Mar-2017

FOR ELECTRICAL TORQUE SPECIFICATIONS SEE DWG NO. 128783-01-000

FOR ELECTRICAL CALLOUTS SEE DWG NO. 121339-01-000



7 ROUTE WIRES ABOVE HEADLINER

7 CAMERA CABLE AND TR,WH,FM TO REAR VIEW MONITOR

ROUTE ANTENNA CABLE TO RADIO

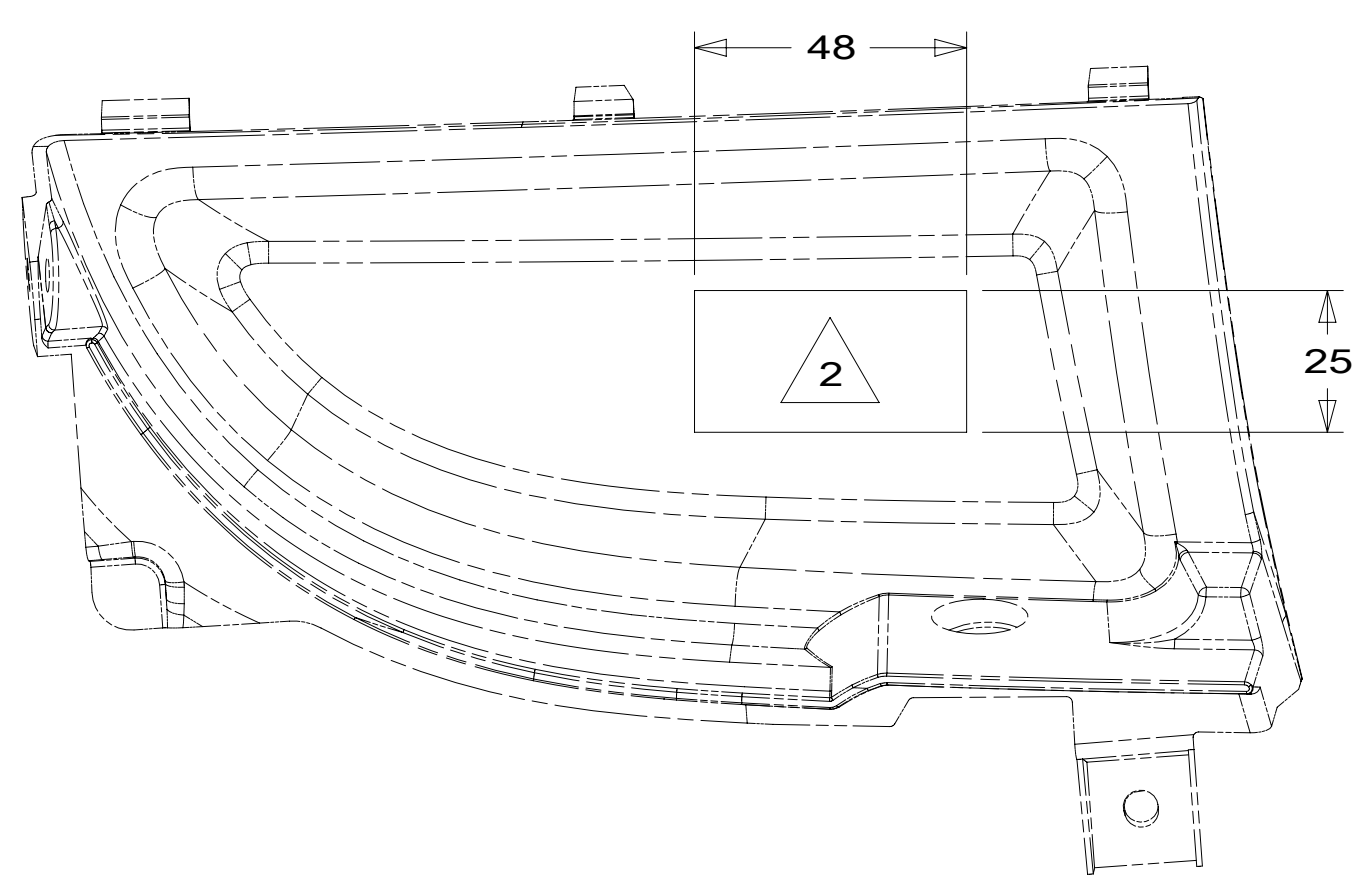
5 CABLE ASM-STARTER (RED) DETAIL BB

SWITCH-BATTERY BOOST 174757-31-CHT PANEL-SWITCH 174834-01-000

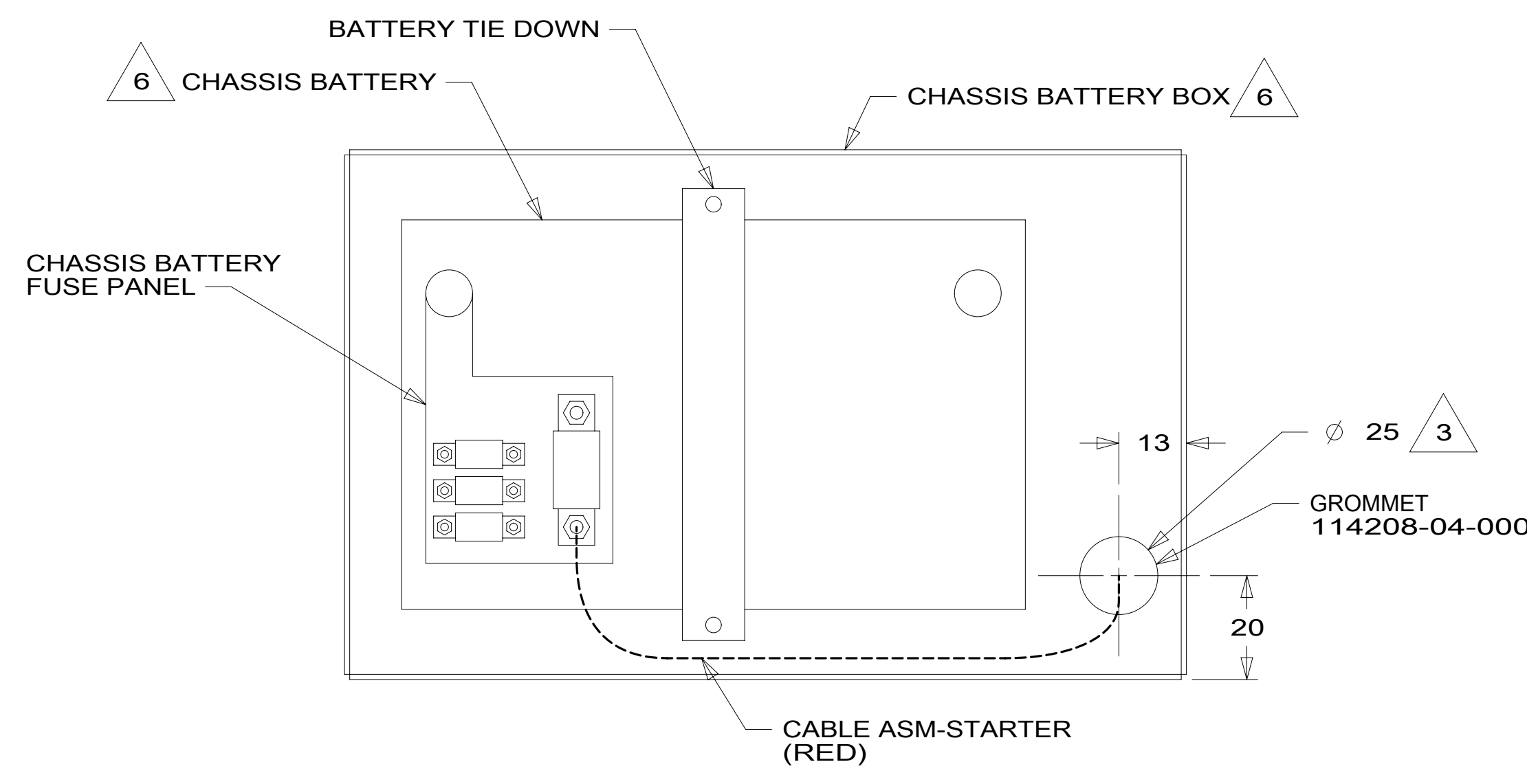
- 8 SECURE WIRE HARNESS WITH CABLE TIE 008343-02-000.
- 7 SEE RADIO/MONITOR INSTL FOR ADDITIONAL INFORMATION.
- 6 LOCATED IN CAB FLOOR.
- 5 SEE BATTERY INSTL FOR ADDITIONAL INFORMATION.
- 4 CLAMP 83610-02-000, SCREW G39-08-12U.
- 3 SEE WIRING INSTL-EXTERIOR LAMPS FOR ADDITIONAL INFORMATION.
- 2 CUTOUT BACKSIDE OF POCKET TO DIMENSION SHOWN.

1. SECURE CONDUIT 41953, TAB AS REQUIRED, OVER ALL WIRES IN CONTACT WITH SHARP EDGES.

NOTES:



VIEW BA



DETAIL BB

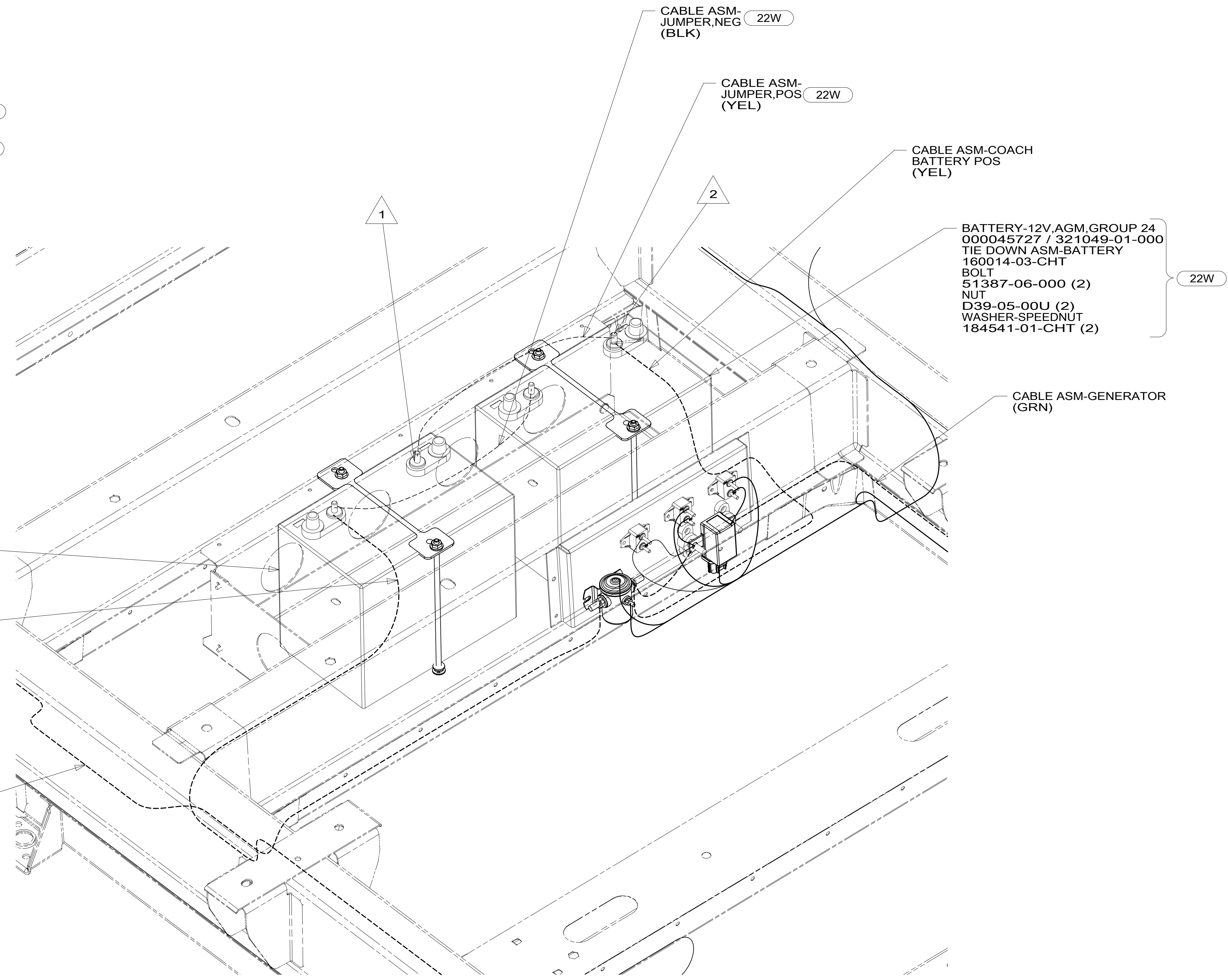
FOR ELECTRICAL TORQUE SPECIFICATIONS SEE DWG NO. 128783-01-000

FOR ELECTRICAL CALLOUTS SEE DWG NO. 121339-01-000

- 282 SOLAR PANEL - 100 WATT
- 52G GEN-3.6KW ONAN LP MICROQUIET
- 265 CODES/STANDARDS-CSA/CMVSS
- 1B1 CODES/STANDARDS USA

DESCRIPTION:		1B1 265	
<b>WIRING INSTL-CHASSIS</b>			
SHEET:	ITEM/PART NO.:	REV:	
2 OF 3	000031230 / 31692401000		

CABLE ASM-STARTER (RED)	185087-01-038	
CABLE ASM-COACH BATTERY (YEL)	141415-52-010	
CABLE ASM-COACH BATTERY GND (BLK)	133566-17-022	
CABLE ASM-GENERATOR (GRN)	141415-42-030	
CABLE ASM-GENERATOR GND (BLK)	133566-17-014	
CABLE ASM-JUMPER,POS	141415-52-004	22W
CABLE ASM-JUMPER,NEG	133566-12-004	22W



BATTERY-12V, AGM, GROUP 24  
 000045727 / 321049-01-000  
 TIE DOWN ASM-BATTERY  
 160014-03-CHT  
 BOLT  
 51387-06-000 (2)  
 NUT  
 D39-05-00U (2)  
 WASHER-SPEEDNUT  
 184541-01-CHT (2)

BATTERY-12V, AGM, GROUP 24  
 000045727 / 321049-01-000  
 TIE DOWN ASM-BATTERY  
 160014-03-CHT  
 BOLT  
 51387-06-000 (2)  
 NUT  
 D39-05-00U (2)  
 WASHER-SPEEDNUT  
 184541-01-CHT (2)

VIEW CA

- NOTES:
- 2 CONNECT CABLE ASM-COACH BATTERY POS (YEL) HERE WITH 22W
  - 1 CONNECT CABLE ASM-COACH BATTERY POS (YEL) HERE WITH 12X

FOR ELECTRICAL TORQUE SPECIFICATIONS SEE DWG NO. 128783-01-000

FOR ELECTRICAL CALLOUTS SEE DWG NO. 121339-01-000

- 12X BATTERY-ONE
- 22W BATTERY-SECOND
- 265 CODES/STANDARDS-CSA/CMVSS
- 1B1 CODES/STANDARDS USA

DESCRIPTION:	1B1 265	
<b>WIRING INSTL-CHASSIS</b>		
SHEET:	ITEM/PART NO:	REV
3 OF 3	000031230 / 31692401000	