

POWER CORD BOX ASM  
VIEW FA

5 GENERATOR CABLE ASM  
TO GENERATOR RECEPTACLE

GROUND WIRE FROM  
LOAD CENTER TO  
CHASSIS GROUND BOLT

GENERATOR CABLE  
ASM TO GENERATOR 33F 5

GENERATOR CABLE ASM  
TO GENERATOR 52G 5

GENERATOR CABLE

RCP-2 (BLU)  
EXTERIOR

AA

CLAMP  
10497-10-000 (2)  
SCREW  
G11-10-12U (2)

THROW IN WIRE #5

CLAMP  
10497-01-000  
SCREW  
G11-10-12U

110V CONNECTORS (4)  
(REF)

THROW IN WIRE #4

INVERTER  
SCREW  
G39-10-16U (4)  
DETAIL DA

55

93

VIEW AA

FOR ELECTRICAL  
TORQUE  
SPECIFICATIONS  
SEE DWG NO.  
128783-01-000

FOR  
ELECTRICAL  
CALLOUTS  
SEE DWG NO.  
121339-01-000

52G GEN-3.6KW ONAN LP MICROQUIET

33F GEN-3.2 KW ONAN DIESEL

265 CODES/STANDARDS-CSA-CMVSS

1B1 CODES/STANDARDS USA

1B1 265



DSNR:		ALL DIMENSIONS ARE IN MILLIMETERS	
DFFR:		MATERIAL:	
UNSPECIFIED TOLERANCES:			
WHOLE DIM (X)	: 3		
ONE-PLACE (X.X)	: 1.5		
TWO-PLACE (X.XX)	: 0.50		
ANGLE	: 1°		

REFER TO ES0018 FOR FASTENER  
TIGHTENING GUIDELINES

WEIGHT: (LBS) FIRST USED:  
**17 524V**

DESCRIPTION:  
**WIRING INSTL-BODY, 110V**

SHEET: 1 OF 8 ITEM/PART NO: 000030876 / 31683901000 REV

5 SEE GENERATOR INSTL FOR ADDITIONAL INFORMATION.

4 WIRES ROUTED THROUGH FLOOR IN THIS AREA.

3. ALL GROUND WIRES TO BE COVERED WITH TUBING 8041-02-000.

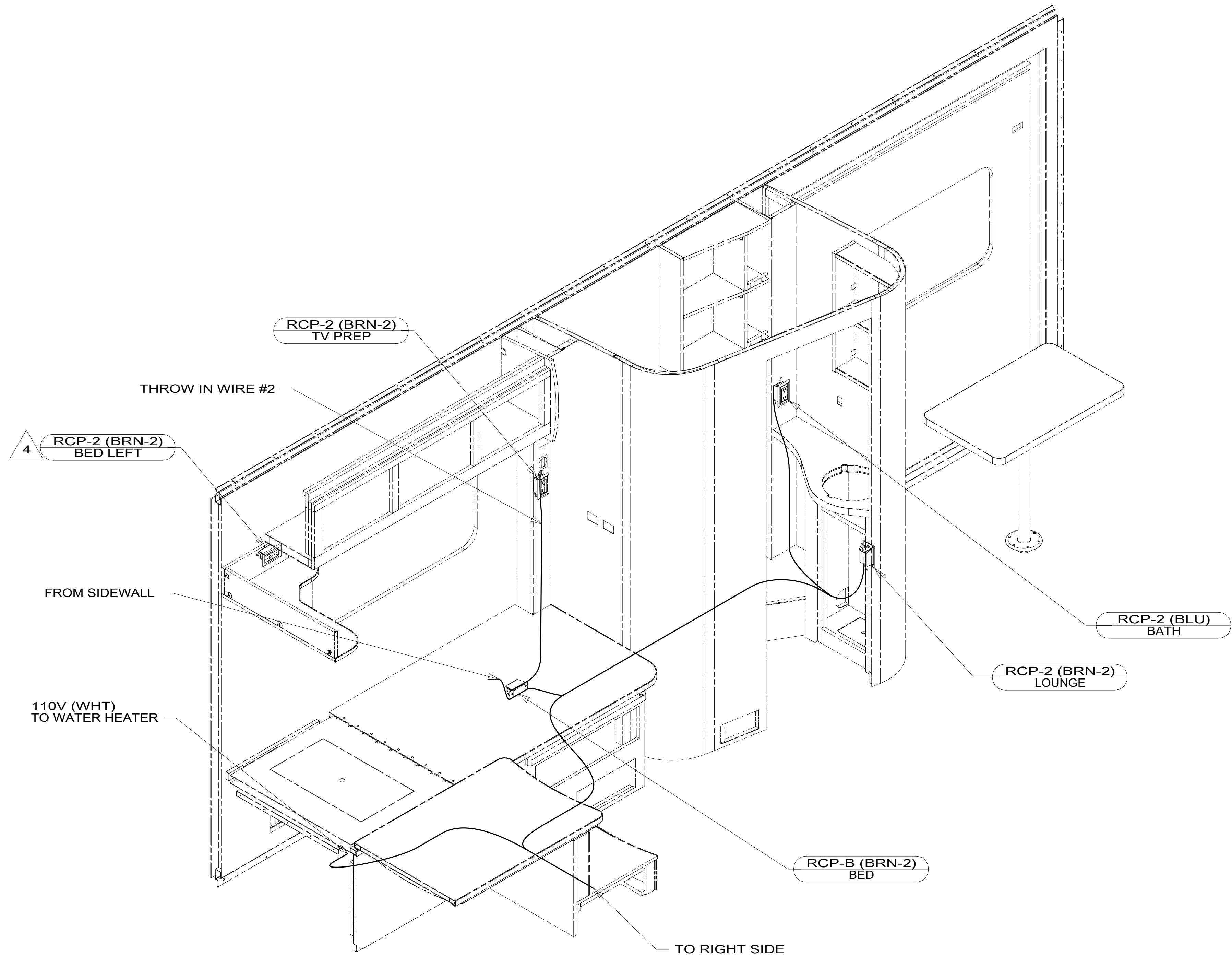
2. ALL 110V WIRE ARE TO BE CLAMPED WITH CLAMP 10495 OR 10497 OR WIRE TIE 8343 OR 108046 AND SCREW G67-XX-XXX OR G56-XX-XXX AS APPROPRIATE FOR INSTALLATION.

1. AT MINIMUM ALL WIRES TO BE SUPPORTED AND SECURED PER CODE REQUIREMENTS. USE CLAMP 10495 OR 10497 OR WIRE TIE 8343 OR 108046 AND SCREW G67-XX-XXX OR G56-XX-XXX AS APPROPRIATE FOR INSTALLATION.

NOTES:

8 7 6 5 4 3 2 1

D  
C  
B  
A



- 4 WIRE ROUTED IN SIDEWALL.
3. ALL GROUND WIRES TO BE COVERED WITH TUBING 8041-02-000.
  2. ALL WIRING TO BE SECURED WITHIN 200MM OF OUTLET BOXES.
  1. AT MINIMUM ALL WIRES TO BE SUPPORTED AND SECURED PER CODE REQUIREMENTS. USE CLAMP 10495 OR 10497 OR WIRE TIE 8343 OR 108046 AND SCREW G67-XX-XXX OR G56-XX-XXX AS APPROPRIATE FOR INSTALLATION.

NOTES:

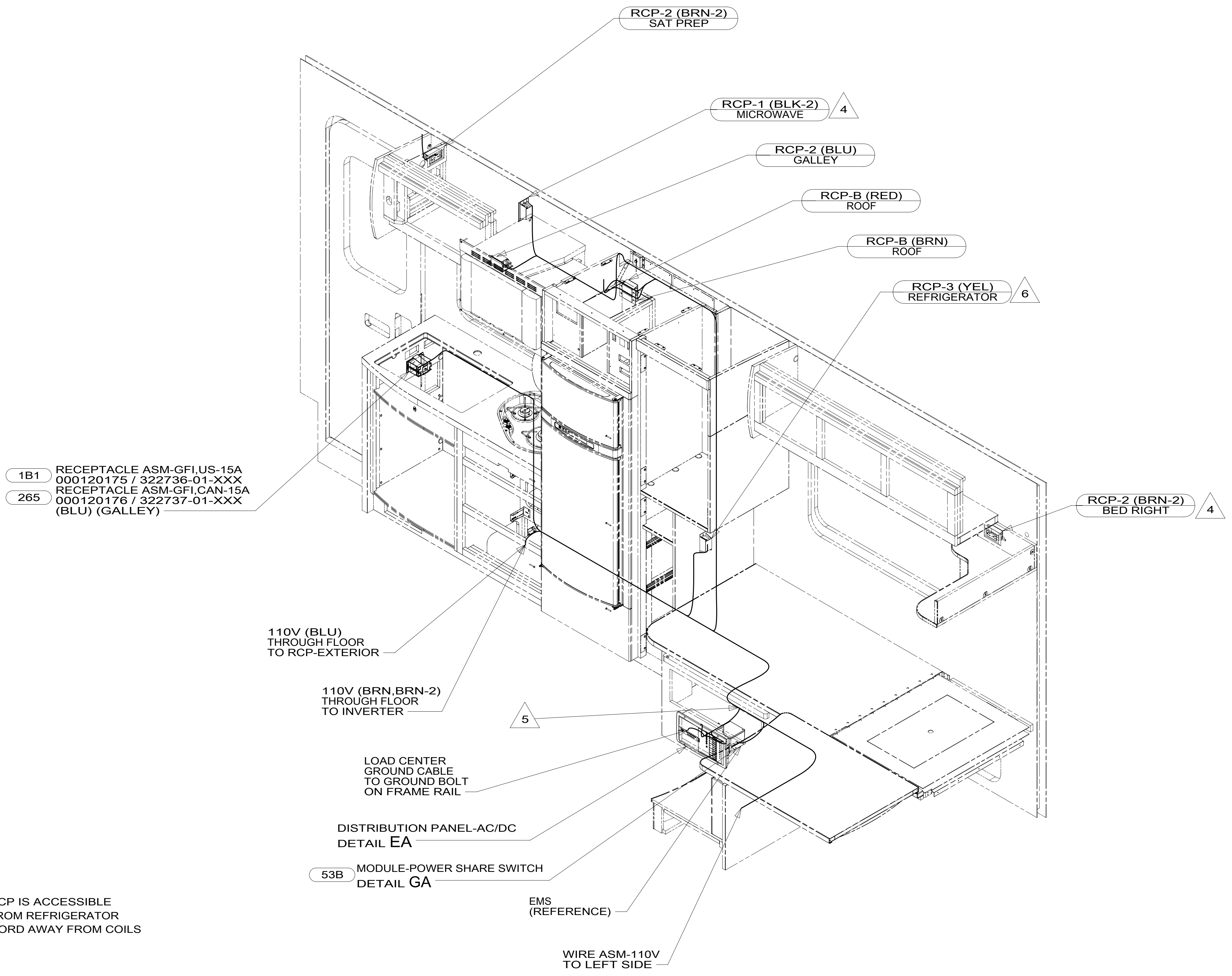
265 CODES/STANDARDS-CSA/CMVSS  
 1B1 CODES/STANDARDS USA

FOR ELECTRICAL TORQUE SPECIFICATIONS SEE DWG NO. 128783-01-000

FOR ELECTRICAL CALLOUTS SEE DWG NO. 121339-01-000

DESCRIPTION:	
<b>WIRING INSTL-BODY, 110V</b>	
SHEET:	ITEM/PART NO. REV
2 OF 8	000030876 / 31683901000

8 7 6 5 4 3 2 1 31-May-2017



- 6 LOCATE REFRIGERATOR RCP SO THAT RCP IS ACCESSIBLE FROM REFRIGERATOR VENT ANDD AWAY FROM REFRIGERATOR COILS. SECURE REFRIGERATOR POWER CORD AWAY FROM COILS USING WIRE TIE.
- 5 (BRN-2) 5500 DROP AND (BLU) 5300 DROP TO LEFT SIDE.
- 4 WIRE ROUTED IN SIDEWALL.
- 3. ALL GROUND WIRES TO BE COVERED WITH TUBING 8041-02-000.
- 2. ALL WIRING TO BE SECURED WITHIN 200MM OF OUTLET BOXES.
- 1. AT MINIMUM ALL WIRES TO BE SUPPORTED AND SECURED PER CODE REQUIREMENTS. USE CLAMP 10495 OR 10497 OR WIRE TIE 8343 OR 108046 AND SCREW G67-XX-XXX OR G56-XX-XXX AS APPROPRIATE FOR INSTALLATION.

NOTES:

- 53B WTR HTR-6GAL ELECTRIC/LP GAS
- 265 CODES/STANDARDS-CSA/CMVSS
- 1B1 CODES/STANDARDS USA

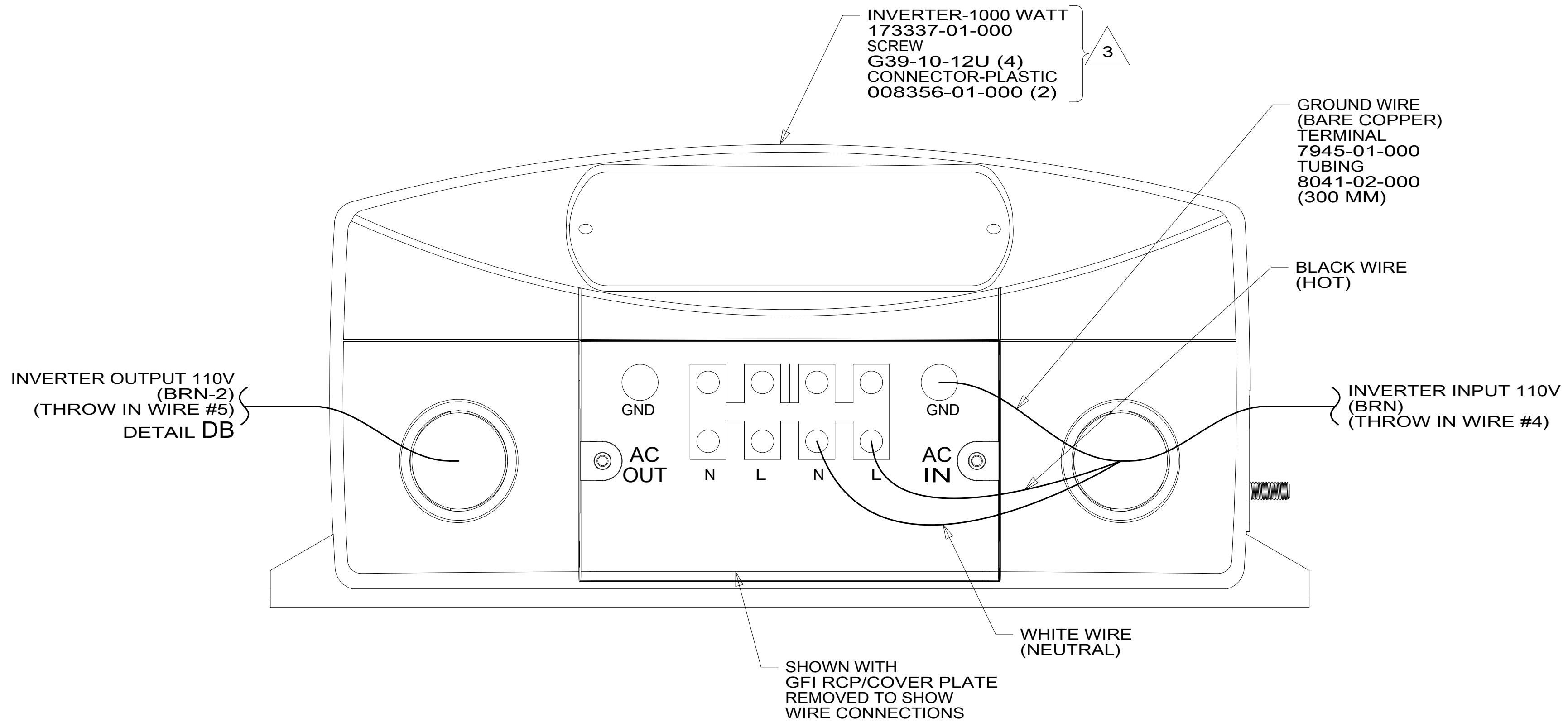
FOR ELECTRICAL TORQUE SPECIFICATIONS SEE DWG NO. 128783-01-000

X-X

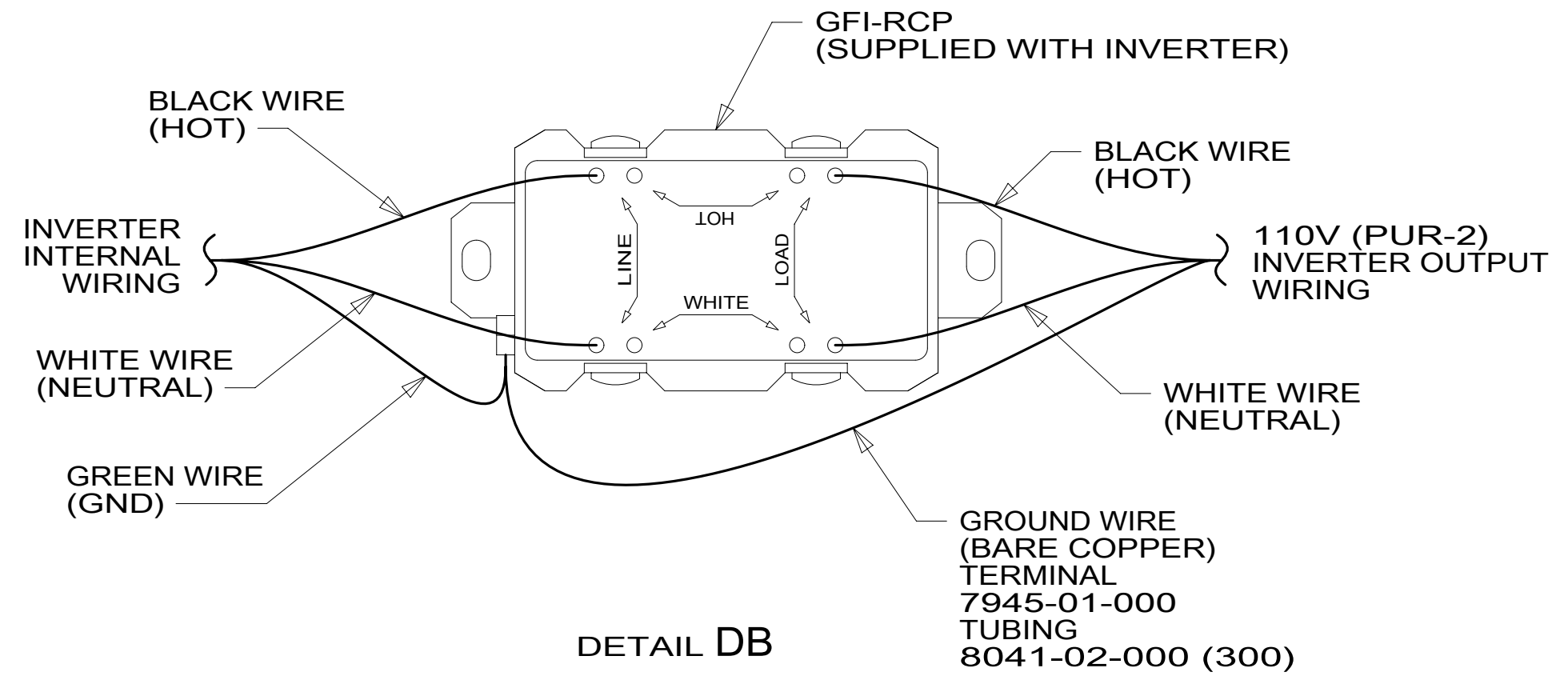
FOR ELECTRICAL CALLOUTS SEE DWG NO. 121339-01-000

DESCRIPTION:	
<b>WIRING INSTL-BODY, 110V</b>	
SHEET:	ITEM/PART NO. REV
3 OF 8	000030876 / 31683901000

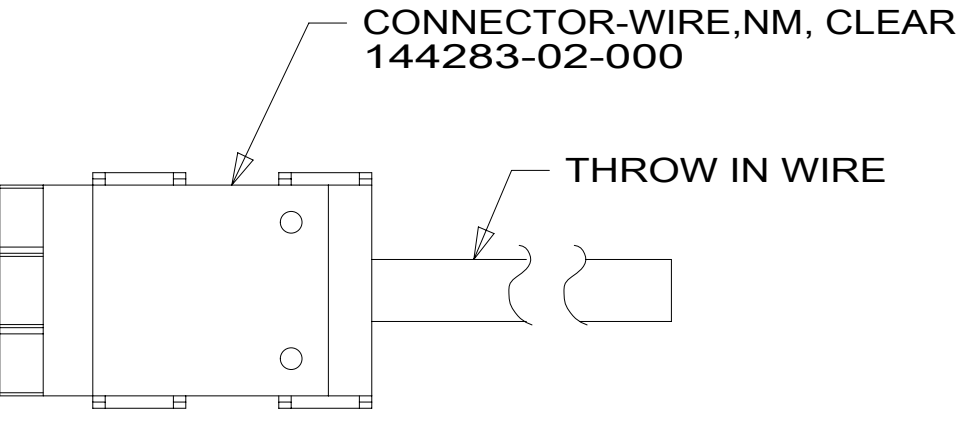
RED	1B1	136135-07-045	
	265	136136-07-045	
YEL	1B1	136131-05-022	
	265	136134-05-022	
BLK	1B1	136135-06-012	53B
	265	136136-06-012	53B
BLK	1B1	136135-06-060	1BU
	265	136136-06-060	1BU
BLK-2	1B1	136135-22-052	53B
	265	136136-22-052	53B
BRN	1B1	136131-03-038	2
	265	136134-03-038	2
BRN-2	1B1	136131-19-160	2
	265	136134-19-160	2
BLU	1B1	136131-02-225	
	265	136134-02-225	
WHT	1B1	136135-09-028	53B
	265	136136-09-028	53B
MAIN	1B1	136137-01-042	
	265	136138-01-042	
THROW IN WIRE #2	1B1	136131-19-017	
	265	136134-19-017	
THROW IN WIRE #4	1B1	136131-03-006	2 4
	265	136134-03-006	2 4
THROW IN WIRE #5	1B1	136131-19-004	2 4
	265	136134-19-004	2 4
GENERATOR CABLE ASM	1B1	164957-02-042	33F
	265	164957-04-042	33F
GROUND		136145-02-015	



DETAIL DA



DETAIL DB



DETAIL DC

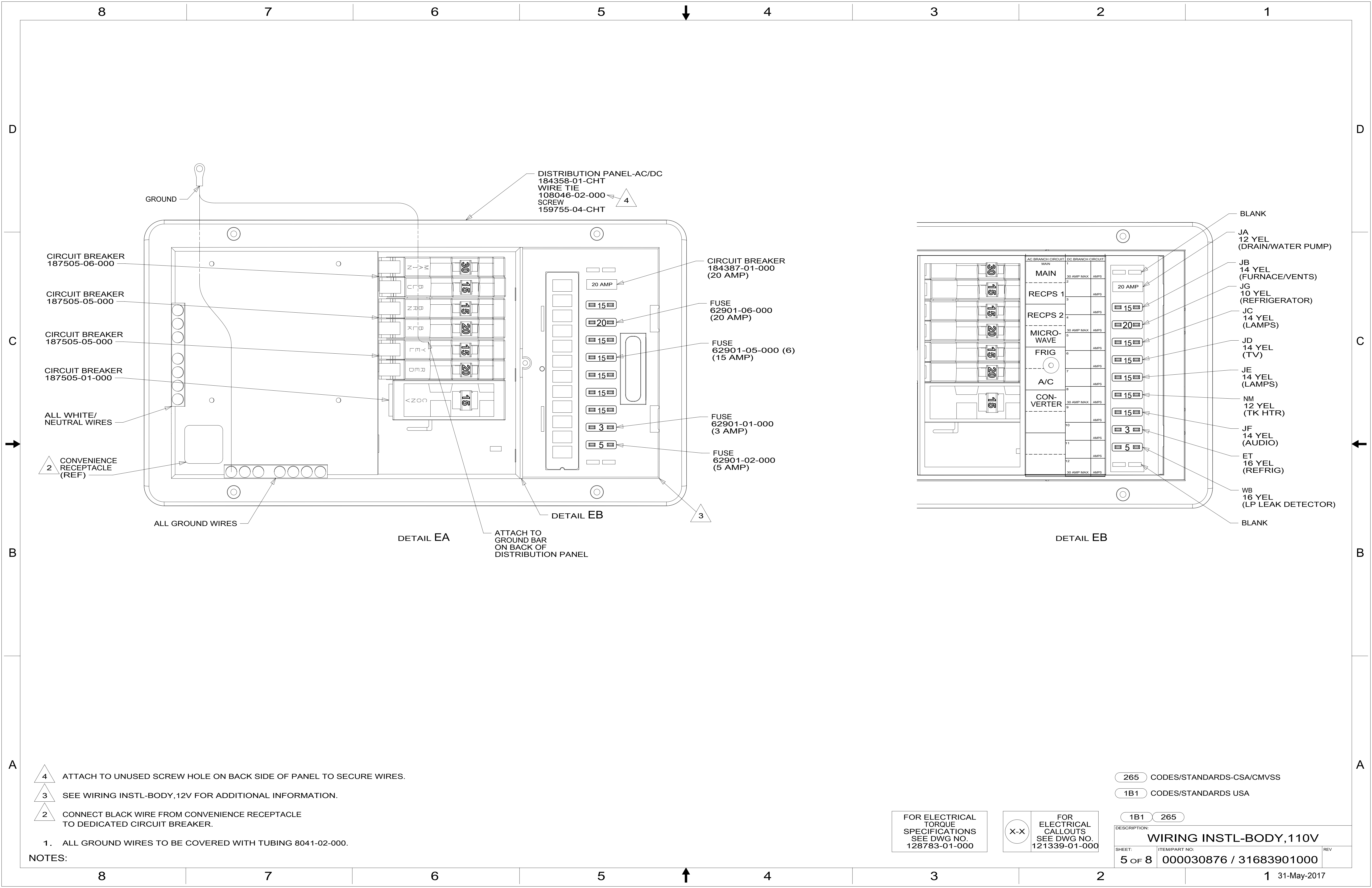
- NOTES:
- 4 FOR ADDITIONAL INFORMATION SEE DETAIL DA.
  - 3 INVERTER SUPPLIED WITH REMOTE PANEL. SEND PANEL TO MANUFACTURING LINE.
  - 2 FOR CONNECTOR INSTALLATION SEE DETAIL DC.
  - 1. ALL GROUND WIRES TO BE COVERED WITH TUBING 8041-02-000.

FOR ELECTRICAL TORQUE SPECIFICATIONS SEE DWG NO. 128783-01-000

FOR ELECTRICAL CALLOUTS SEE DWG NO. 121339-01-000

- 1BU WTR HTR TKLS W/RECIRCUL PUMP
- 53B WTR HTR-6GAL ELECTRIC/LP GAS
- 33F GEN-3.5 KW ONAN DIESEL
- 265 CODES/STANDARDS-CSA/CMVSS
- 1B1 CODES/STANDARDS USA

DESCRIPTION:	1B1 265	
<b>WIRING INSTL-BODY, 110V</b>		
SHEET:	ITEM/PART NO:	REV
4 OF 8	000030876 / 31683901000	



DISTRIBUTION PANEL-AC/DC  
 184358-01-CHT  
 WIRE TIE  
 108046-02-000  
 SCREW  
 159755-04-CHT

CIRCUIT BREAKER  
 187505-06-000  
 CIRCUIT BREAKER  
 187505-05-000  
 CIRCUIT BREAKER  
 187505-05-000  
 CIRCUIT BREAKER  
 187505-01-000

CIRCUIT BREAKER  
 184387-01-000  
 (20 AMP)  
 FUSE  
 62901-06-000  
 (20 AMP)  
 FUSE  
 62901-05-000 (6)  
 (15 AMP)  
 FUSE  
 62901-01-000  
 (3 AMP)  
 FUSE  
 62901-02-000  
 (5 AMP)

BLANK  
 JA  
 12 YEL  
 (DRAIN/WATER PUMP)  
 JB  
 14 YEL  
 (FURNACE/VENTS)  
 JG  
 10 YEL  
 (REFRIGERATOR)  
 JC  
 14 YEL  
 (LAMPS)  
 JD  
 14 YEL  
 (TV)  
 JE  
 14 YEL  
 (LAMPS)  
 NM  
 12 YEL  
 (TK HTR)  
 JF  
 14 YEL  
 (AUDIO)  
 ET  
 16 YEL  
 (REFRIG)  
 WB  
 16 YEL  
 (LP LEAK DETECTOR)  
 BLANK

CONVENIENCE  
 RECEPTACLE  
 (REF)

- 4 ATTACH TO UNUSED SCREW HOLE ON BACK SIDE OF PANEL TO SECURE WIRES.
- 3 SEE WIRING INSTL-BODY, 12V FOR ADDITIONAL INFORMATION.
- 2 CONNECT BLACK WIRE FROM CONVENIENCE RECEPTACLE TO DEDICATED CIRCUIT BREAKER.

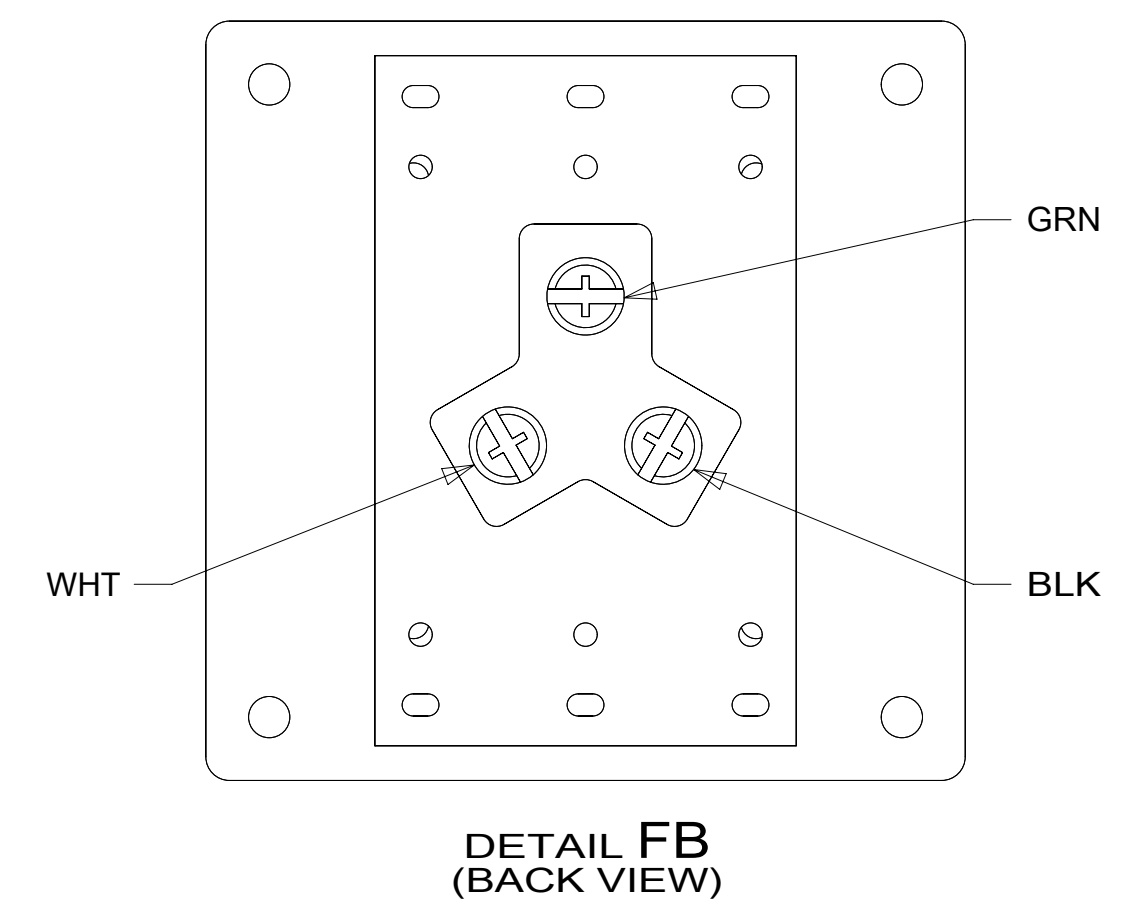
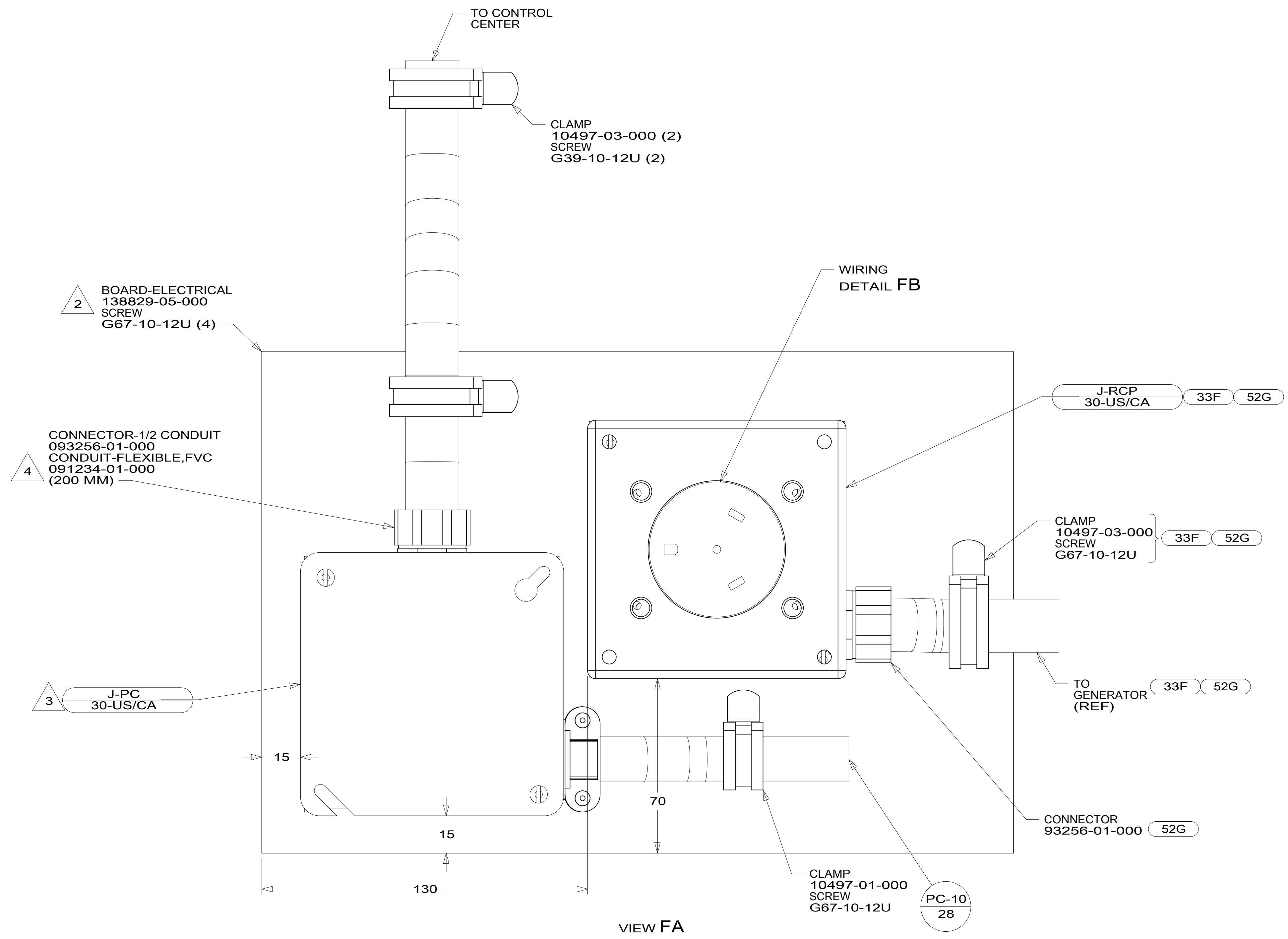
NOTES:  
 1. ALL GROUND WIRES TO BE COVERED WITH TUBING 8041-02-000.

FOR ELECTRICAL  
 TORQUE  
 SPECIFICATIONS  
 SEE DWG NO.  
 128783-01-000

FOR ELECTRICAL  
 CALLOUTS  
 SEE DWG NO.  
 121339-01-000

265 CODES/STANDARDS-CSA/CMVSS  
 1B1 CODES/STANDARDS USA

DESCRIPTION: <b>WIRING INSTL-BODY, 110V</b>	
SHEET: 5 OF 8	ITEM/PART NO: 000030876 / 31683901000
REV	



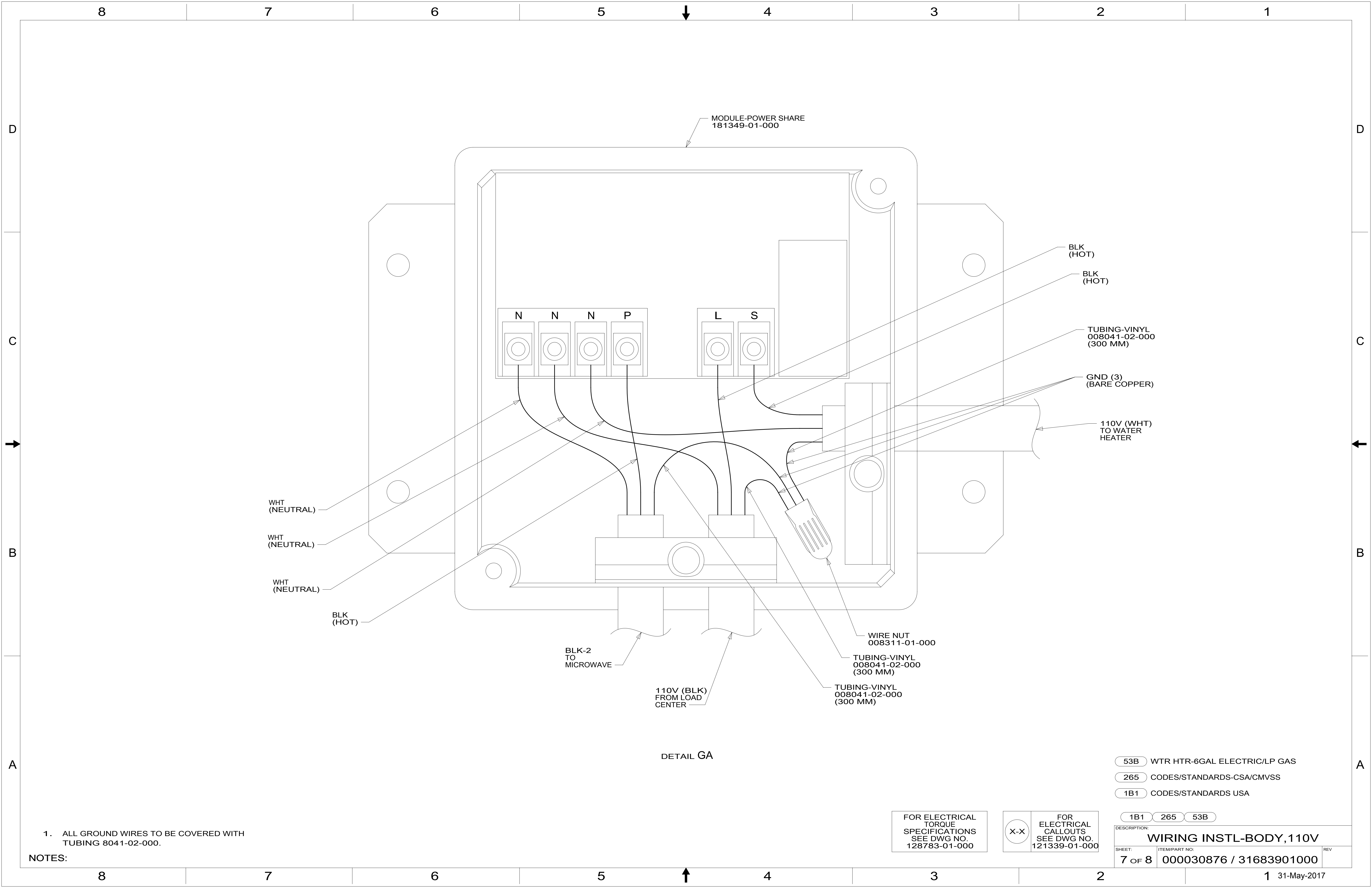
- NOTES:
- 4 SECURE CONDUIT TO POWER CORD WITH TAPE 8363-01-000 FOR TRANSPORTATION PURPOSES.
  - 3 CONNECT BLK TO BLK, WHT TO WHT, AND GRNDS TO GRNDS.
  - 2 SCREW INTO BACKSIDE OF BOARD THRU PANEL DURING INSTALLATION.
1. ALL GROUND WIRES TO BE COVERED WITH TUBING 8041-02-000.

FOR ELECTRICAL TORQUE SPECIFICATIONS SEE DWG NO. 128783-01-000

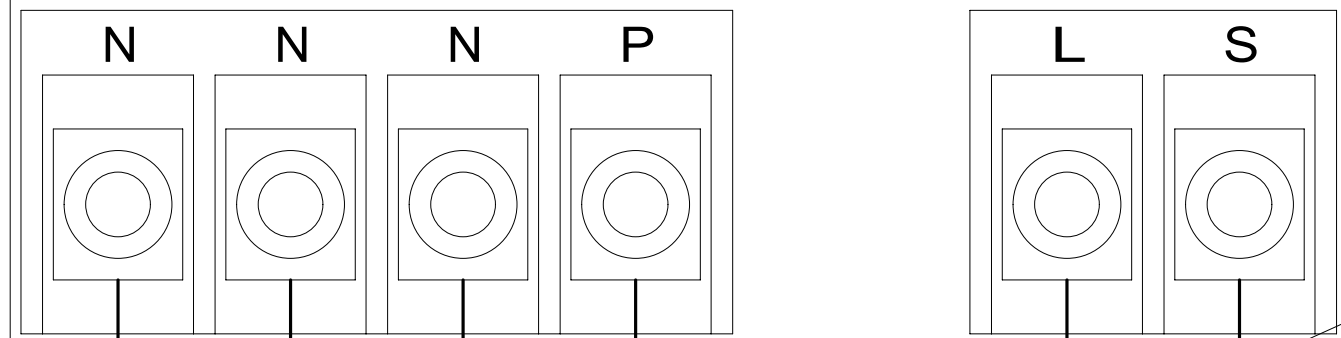
FOR ELECTRICAL CALLOUTS SEE DWG NO. 121339-01-000

- 33F GEN-3.5 KW ONAN DIESEL
- 52G GEN-3.6KW ONAN LP MICROQUIET
- 265 CODES/STANDARDS-CSA/CMVSS
- 1B1 CODES/STANDARDS USA

DESCRIPTION:	
<b>WIRING INSTL-BODY, 110V</b>	
SHEET: 6 OF 8	ITEM/PART NO: 000030876 / 31683901000
REV	



MODULE-POWER SHARE  
181349-01-000



BLK (HOT)

BLK (HOT)

TUBING-VINYL  
008041-02-000  
(300 MM)

GND (3)  
(BARE COPPER)

110V (WHT)  
TO WATER  
HEATER

WHT  
(NEUTRAL)

WHT  
(NEUTRAL)

WHT  
(NEUTRAL)

BLK  
(HOT)

BLK-2  
TO  
MICROWAVE

110V (BLK)  
FROM LOAD  
CENTER

WIRE NUT  
008311-01-000

TUBING-VINYL  
008041-02-000  
(300 MM)

TUBING-VINYL  
008041-02-000  
(300 MM)

DETAIL GA

53B WTR HTR-6GAL ELECTRIC/LP GAS

265 CODES/STANDARDS-CSA/CMVSS

1B1 CODES/STANDARDS USA

1B1 265 53B

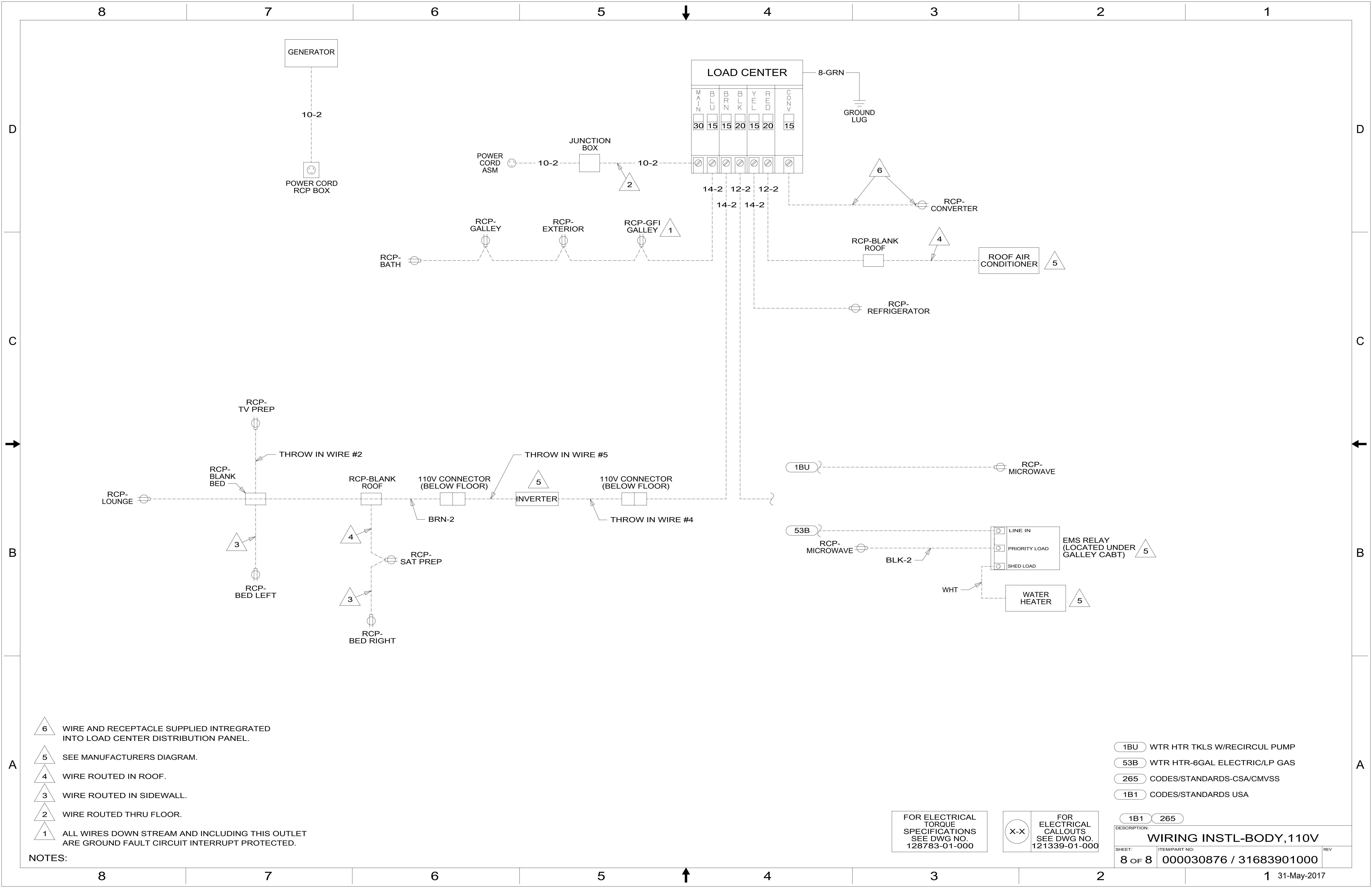
FOR ELECTRICAL  
TORQUE  
SPECIFICATIONS  
SEE DWG NO.  
128783-01-000

FOR ELECTRICAL  
CALLOUTS  
SEE DWG NO.  
121339-01-000

DESCRIPTION:  
**WIRING INSTL-BODY, 110V**

SHEET: 7 OF 8 ITEM/PART NO: 000030876 / 31683901000 REV

NOTES:  
1. ALL GROUND WIRES TO BE COVERED WITH  
TUBING 8041-02-000.



- NOTES:
- 6 WIRE AND RECEPTACLE SUPPLIED INTREGATED INTO LOAD CENTER DISTRIBUTION PANEL.
  - 5 SEE MANUFACTURERS DIAGRAM.
  - 4 WIRE ROUTED IN ROOF.
  - 3 WIRE ROUTED IN SIDEWALL.
  - 2 WIRE ROUTED THRU FLOOR.
  - 1 ALL WIRES DOWN STREAM AND INCLUDING THIS OUTLET ARE GROUND FAULT CIRCUIT INTERRUPT PROTECTED.

FOR ELECTRICAL TORQUE SPECIFICATIONS SEE DWG NO. 128783-01-000

FOR ELECTRICAL CALLOUTS SEE DWG NO. 121339-01-000

- 1BU WTR HTR TKLS W/RECIRCUL PUMP
- 53B WTR HTR-6GAL ELECTRIC/LP GAS
- 265 CODES/STANDARDS-CSA/CMVSS
- 1B1 CODES/STANDARDS USA

DESCRIPTION: <b>WIRING INSTL-BODY, 110V</b>		
SHEET: <b>8 OF 8</b>	ITEM/PART NO: <b>000030876 / 31683901000</b>	REV