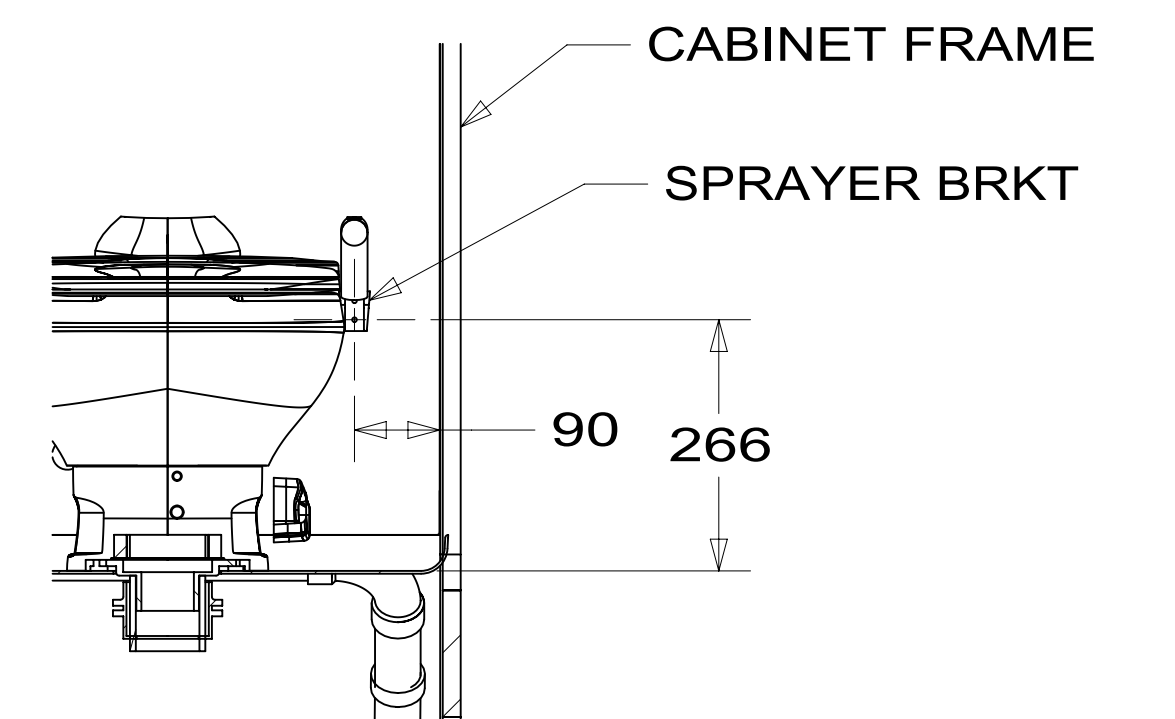
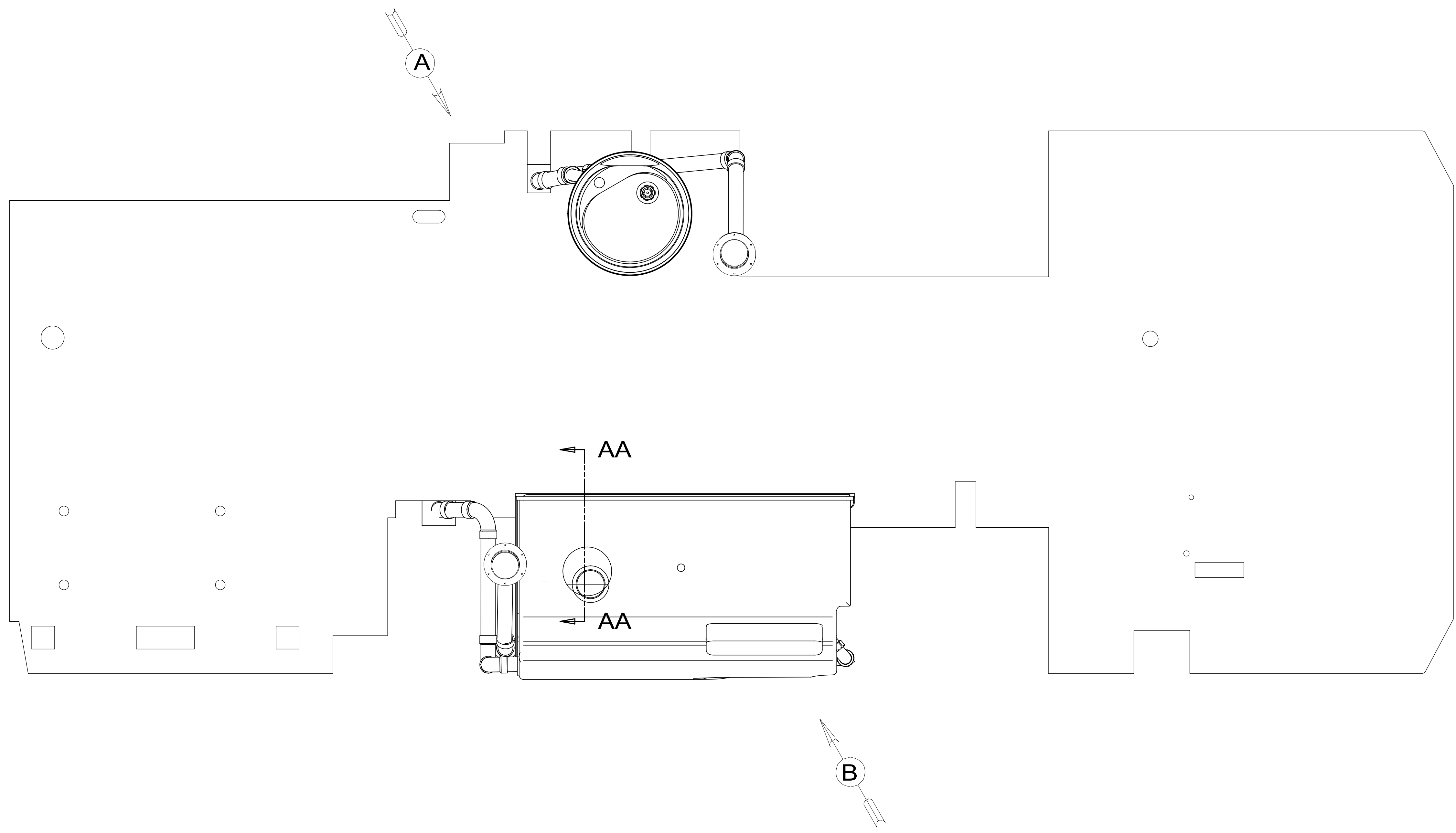


8 7 6 5 4 3 2 1



SECTION AA-AA

- NOTES:
- 10 USE CLEAR SILICONE TO SEAL SINK TO SHOWER SURROUND.
  - 9 USE SMOOTH PLUMBERS PUTTY 167459-01-000 TO SEAL STRAINER (0.2 PER STRAINERS)
  - 8 NIPPLE TO BE TRIMMED TO LENGTH ON INSTALL.
  - 7 TRIM TO FIT.
  - 6 VENT PIPE MUST PROJECT 51 MIN AND 64 MAX ABOVE ROOF FOR PROPER FIT AND FUNCTION.
  5. SEAL AROUND SHOWER WITH SILICONE.
  4. SECURE DRAINAGE PIPES TO CABINET USING WIRE TIE 108046-02-000, AND SCREW 000G67-10-12U AT INTERVALS OF NOT MORE THAN 4 FEET APART.
  3. ALL PIPE AND FITTINGS TO BE ASSEMBLED WITH SOLVENT 004020-01-000 (USA), 004020-02-000 (CAN)
  2. SLOPE OF TRAP ARM MUST BE 6 PER 305 mm.
  1. SLOPE OF HORIZONTAL PIPING TO BE MINIMUM OF 3 PER 305 mm.

FOR DRAINAGE CALLOUTS SEE DWG NO. 000211962 / 303370-01-000

<b>WINNEBAGO</b> COPYRIGHT 2018 WINNEBAGO INDUSTRIES, INC.	
DSNR:	ALL DIMENSIONS ARE IN MILLIMETERS
DIFFR:	
UNSPECIFIED TOLERANCES:	MATERIAL:
WHOLE DIM (X) :	3
ONE-PLACE (X.X) :	1.5
TWO-PLACE (X.XX) :	0.50
ANGLE :	1°
REFER TO ES0018 FOR FASTENER TIGHTENING GUIDELINES	WEIGHT: (LBS) FIRST USED: (REF)
	17 170A
DESCRIPTION: <b>DRAINAGE SYSTEM INSTL</b>	
SHEET: 1 OF 4	ITEM/PART NO: 000030640 / 31675701000
REF:	1 07-Nov-2018

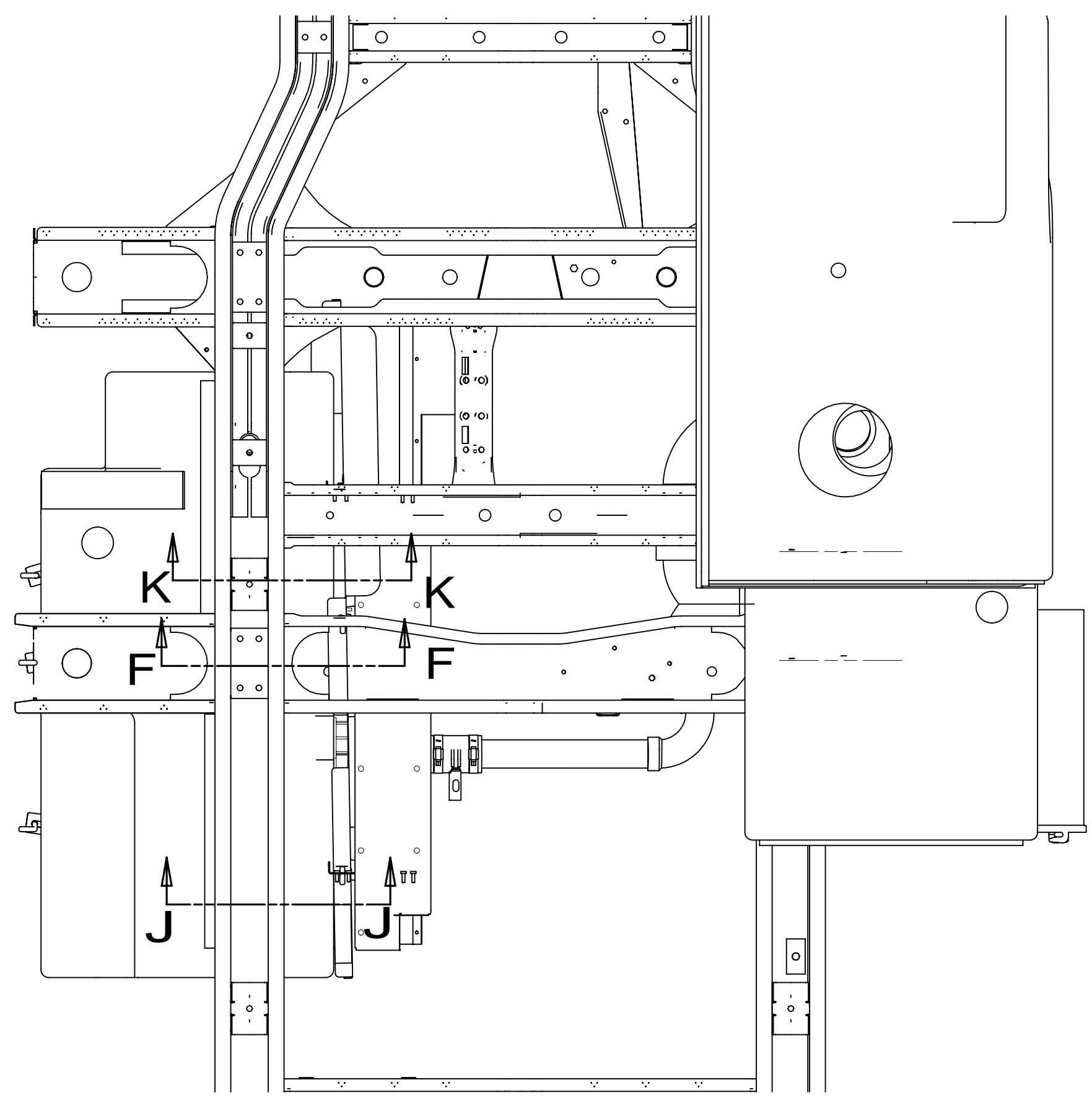
8 7 6 5 4 3 2 1



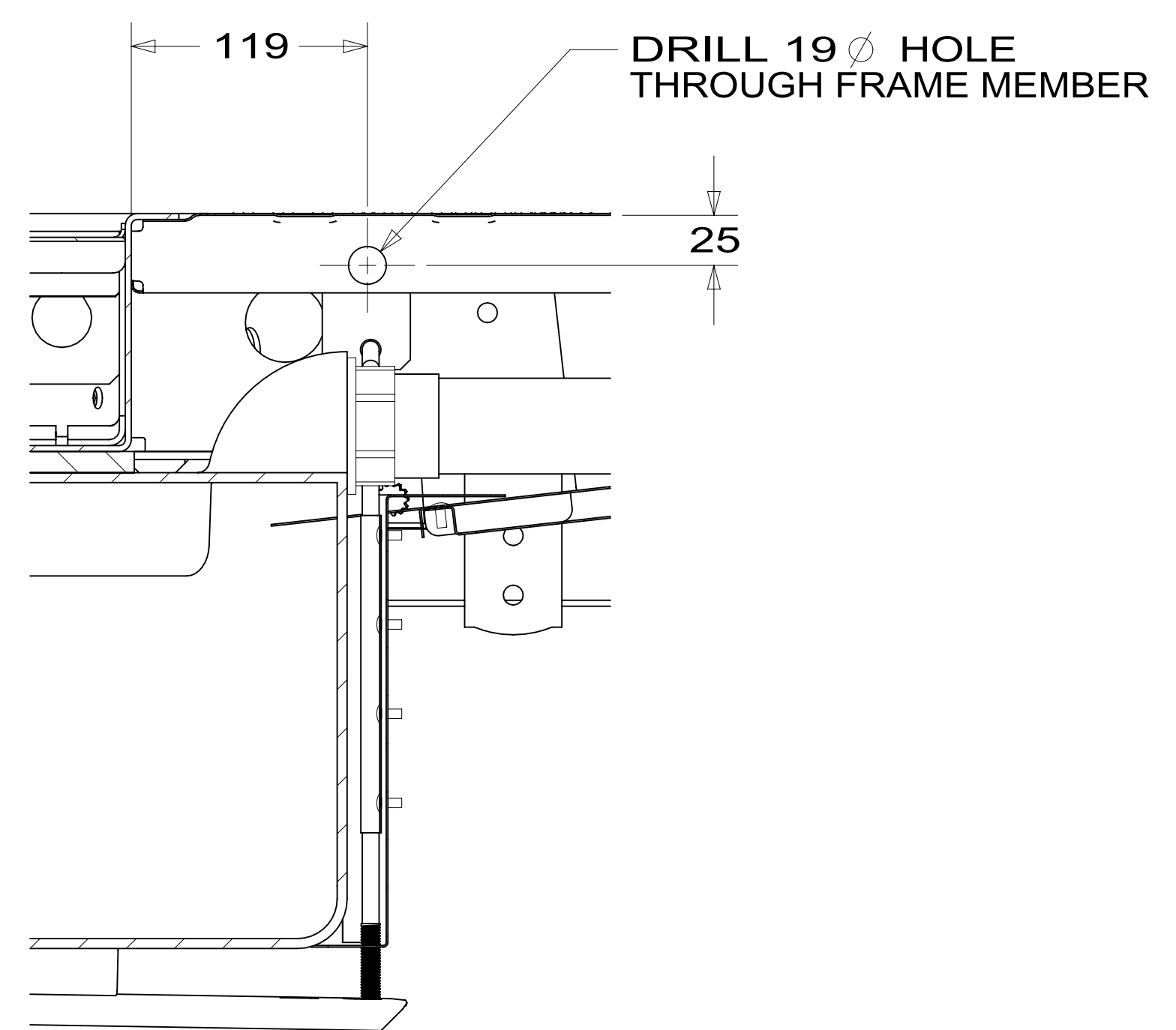


8 7 6 5 4 3 2 1

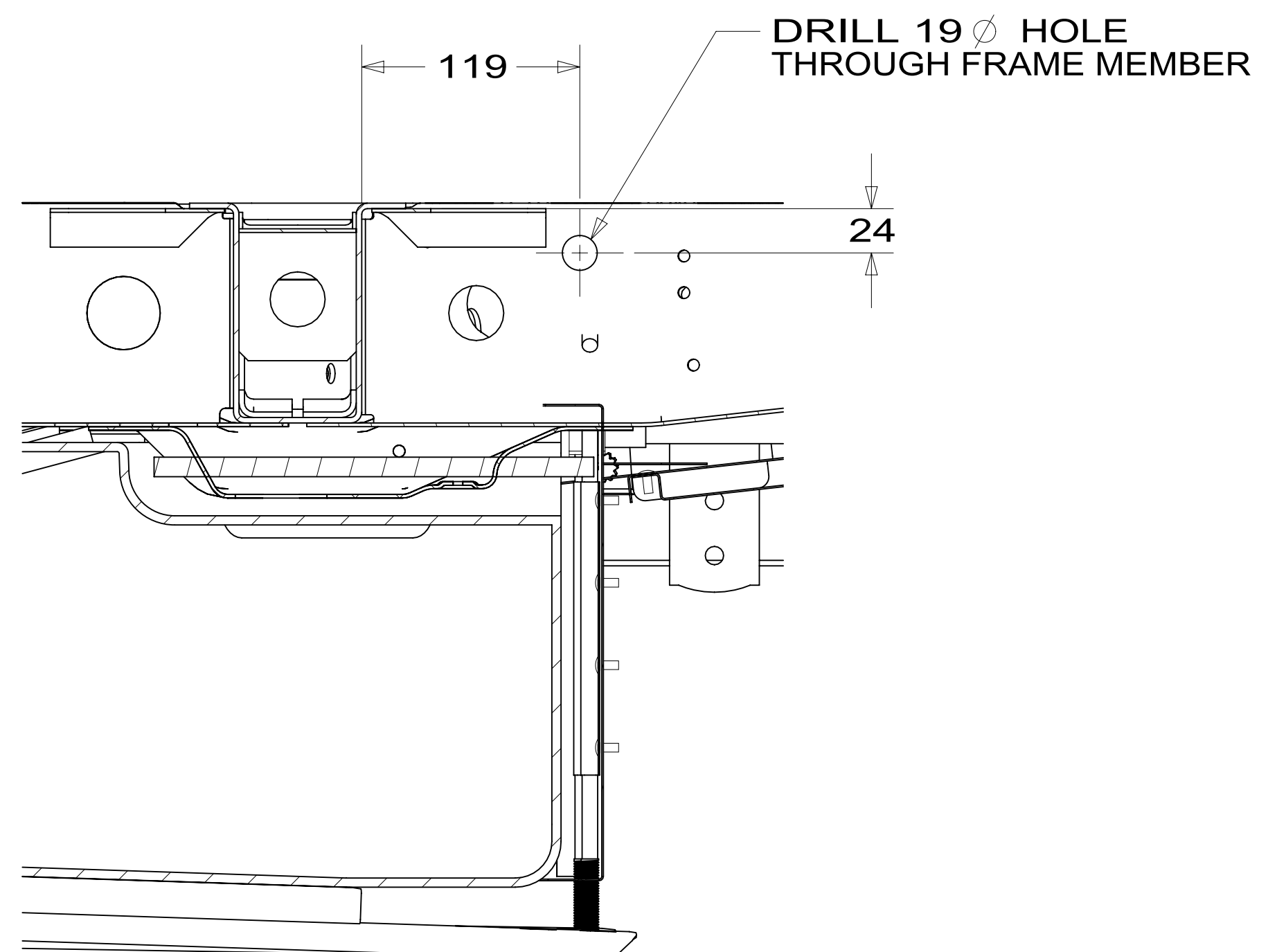
D  
C  
B  
A



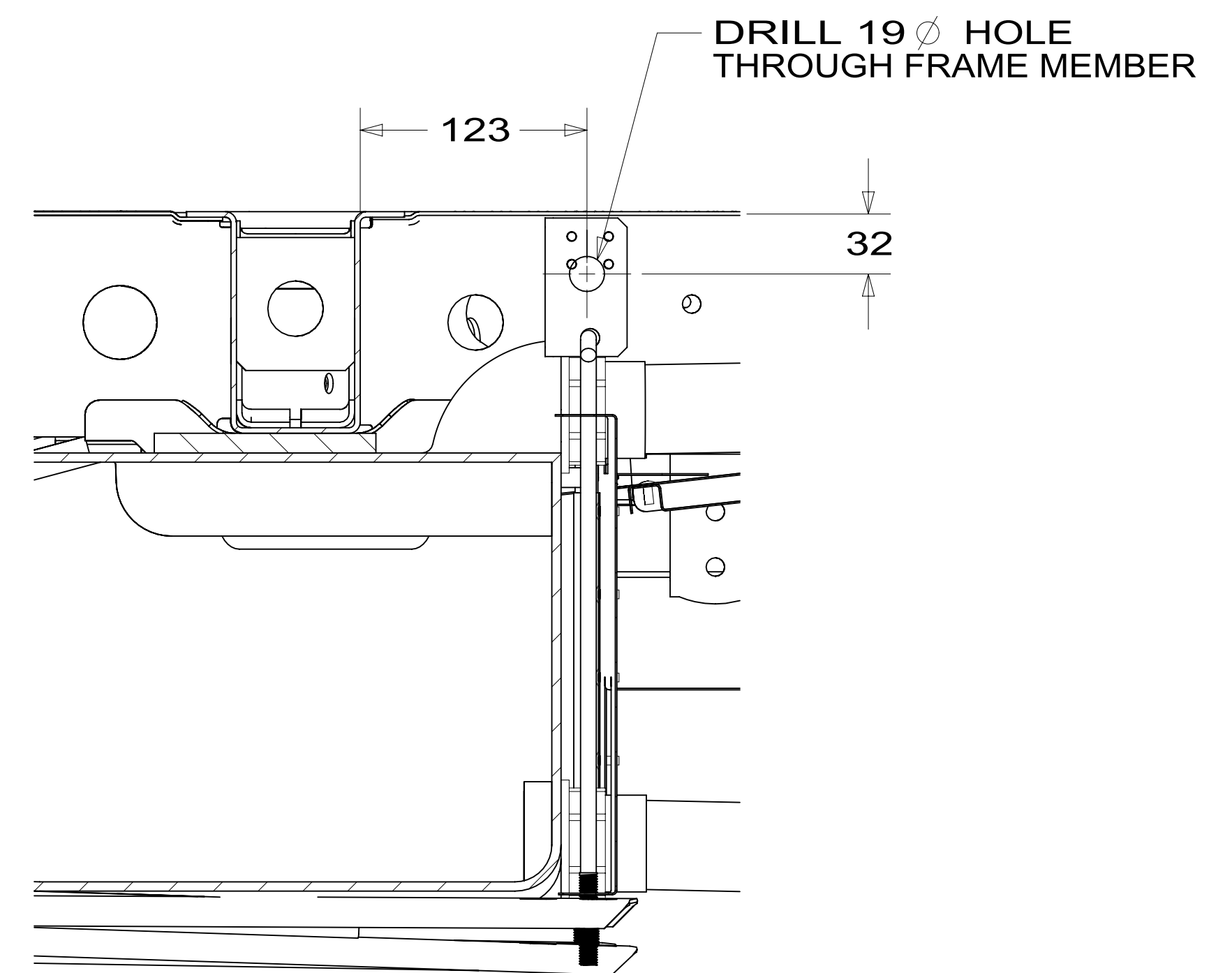
VIEW H



SECTION K-K



SECTION F-F



SECTION J-J

DESCRIPTION: <b>DRAINAGE SYSTEM INSTL</b>		
SHEET: <b>4 OF 4</b>	ITEM/PART NO: <b>000030640 / 31675701000</b>	REV
		1 07-Nov-2018

8 7 6 5 4 3 2 1