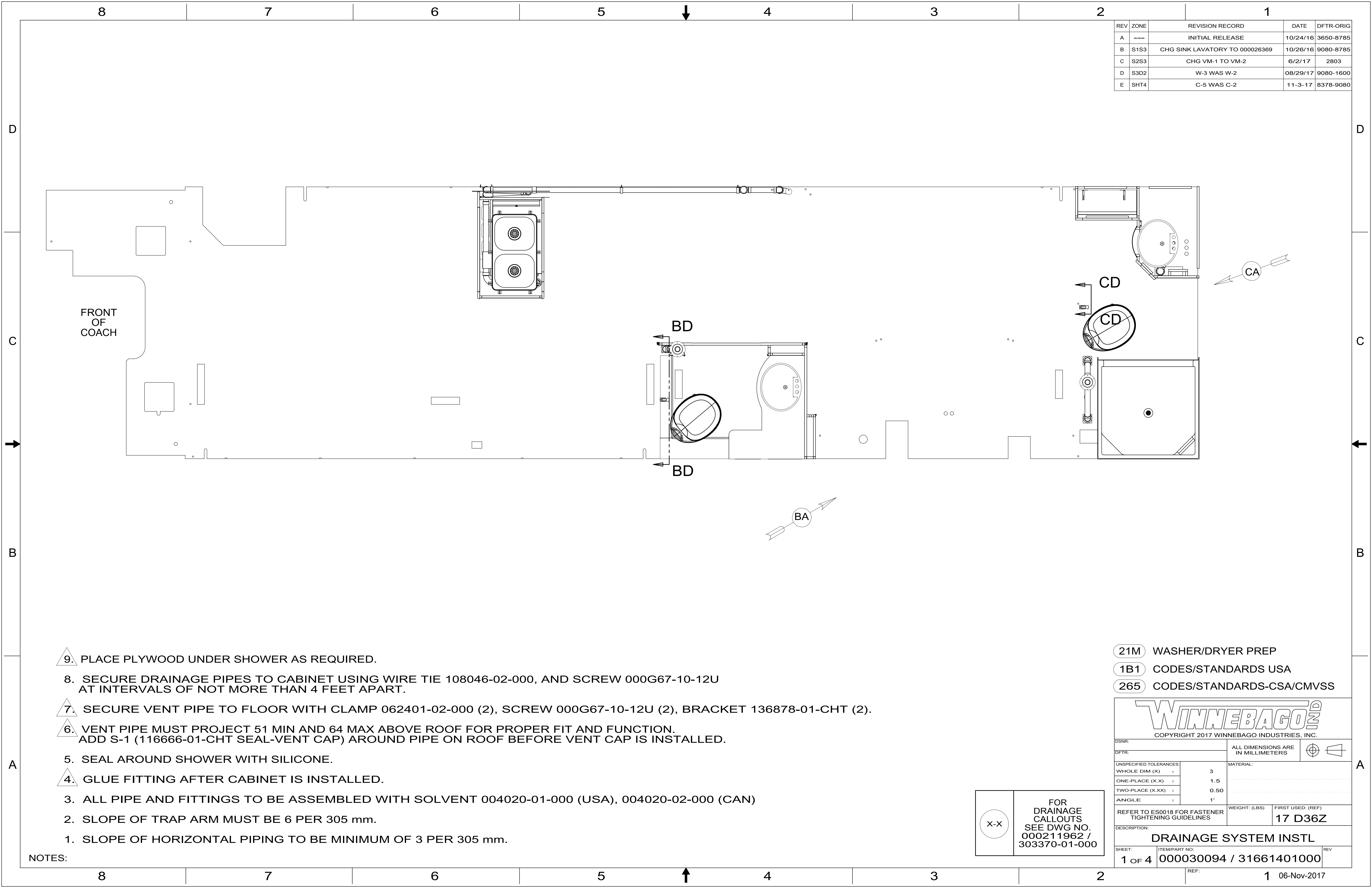


REV	ZONE	REVISION RECORD	DATE	DFTR-ORIG
A	---	INITIAL RELEASE	10/24/16	3650-8785
B	S1S3	CHG SINK LAVATORY TO 000026369	10/26/16	9080-8785
C	S2S3	CHG VM-1 TO VM-2	6/2/17	2803
D	S3D2	W-3 WAS W-2	08/29/17	9080-1600
E	SHT4	C-5 WAS C-2	11-3-17	8378-9080



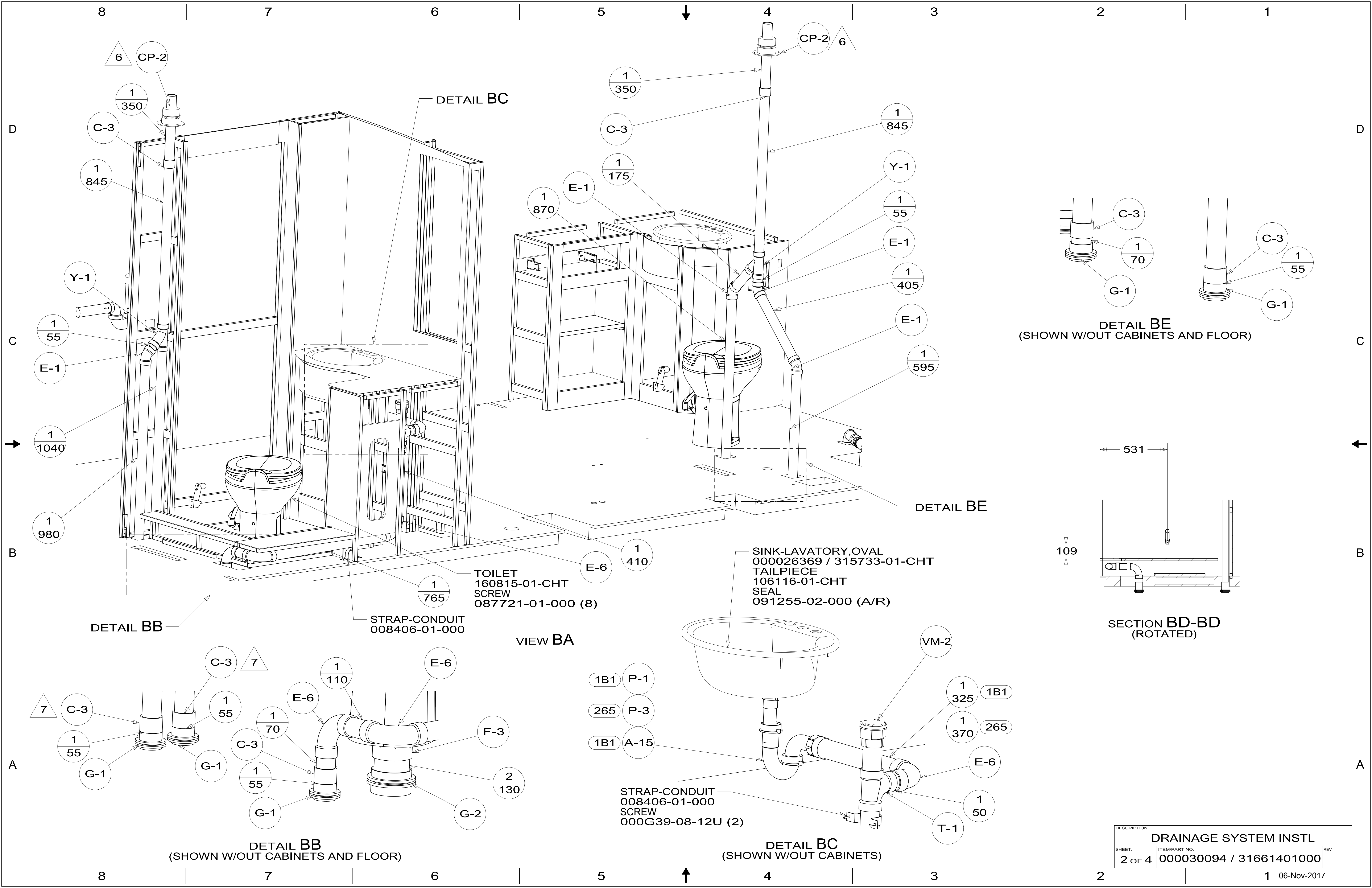
- NOTES:
1. SLOPE OF HORIZONTAL PIPING TO BE MINIMUM OF 3 PER 305 mm.
  2. SLOPE OF TRAP ARM MUST BE 6 PER 305 mm.
  3. ALL PIPE AND FITTINGS TO BE ASSEMBLED WITH SOLVENT 004020-01-000 (USA), 004020-02-000 (CAN)
  4. GLUE FITTING AFTER CABINET IS INSTALLED.
  5. SEAL AROUND SHOWER WITH SILICONE.
  6. VENT PIPE MUST PROJECT 51 MIN AND 64 MAX ABOVE ROOF FOR PROPER FIT AND FUNCTION. ADD S-1 (116666-01-CHT SEAL-VENT CAP) AROUND PIPE ON ROOF BEFORE VENT CAP IS INSTALLED.
  7. SECURE VENT PIPE TO FLOOR WITH CLAMP 062401-02-000 (2), SCREW 000G67-10-12U (2), BRACKET 136878-01-CHT (2).
  8. SECURE DRAINAGE PIPES TO CABINET USING WIRE TIE 108046-02-000, AND SCREW 000G67-10-12U AT INTERVALS OF NOT MORE THAN 4 FEET APART.
  9. PLACE PLYWOOD UNDER SHOWER AS REQUIRED.

- 21M WASHER/DRYER PREP
- 1B1 CODES/STANDARDS USA
- 265 CODES/STANDARDS-CSA/CMVSS

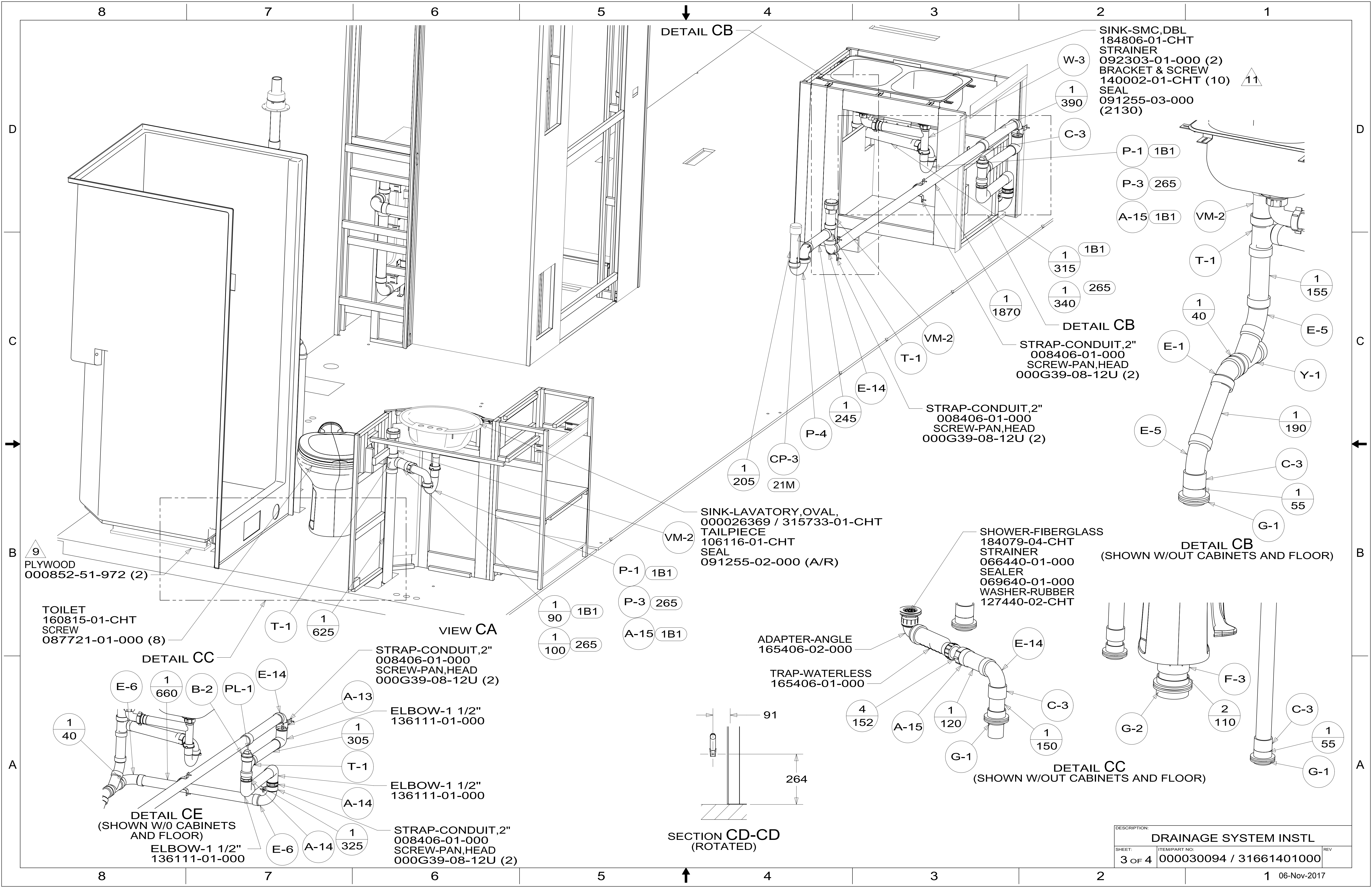


DSNR:		ALL DIMENSIONS ARE IN MILLIMETERS	
DFTR:		MATERIAL:	
UNSPECIFIED TOLERANCES:			
WHOLE DIM (X)	3		
ONE-PLACE (X.X)	1.5		
TWO-PLACE (X.XX)	0.50		
ANGLE	1°		
REFER TO ES0018 FOR FASTENER TIGHTENING GUIDELINES		WEIGHT: (LBS)	FIRST USED: (REF)
			17 D36Z
DESCRIPTION: DRAINAGE SYSTEM INSTL			
SHEET:	ITEM/PART NO:	REV	
1 OF 4	000030094 / 31661401000		

FOR DRAINAGE CALLOUTS SEE DWG NO. 000211962 / 303370-01-000



DESCRIPTION:		
DRAINAGE SYSTEM INSTL		
SHEET:	ITEM/PART NO.:	REV
2 OF 4	000030094 / 31661401000	



SINK-SMC, DBL  
184806-01-CHT  
STRAINER  
092303-01-000 (2)  
BRACKET & SCREW  
140002-01-CHT (10) <sup>11</sup>  
SEAL  
091255-03-000  
(2130)

W-3  
1  
390

C-3

P-1 1B1  
P-3 265  
A-15 1B1

1 1B1  
315  
1 265  
340

DETAIL CB  
STRAP-CONDUIT, 2"  
008406-01-000  
SCREW-PAN, HEAD  
000G39-08-12U (2)

STRAP-CONDUIT, 2"  
008406-01-000  
SCREW-PAN, HEAD  
000G39-08-12U (2)

DETAIL CB  
(SHOWN W/OUT CABINETS AND FLOOR)

SHOWER-FIBERGLASS  
184079-04-CHT  
STRAINER  
066440-01-000  
SEALER  
069640-01-000  
WASHER-RUBBER  
127440-02-CHT

DETAIL CC  
(SHOWN W/OUT CABINETS AND FLOOR)

SINK-LAVATORY, OVAL,  
000026369 / 315733-01-CHT  
TAILPIECE  
106116-01-CHT  
SEAL  
091255-02-000 (A/R)

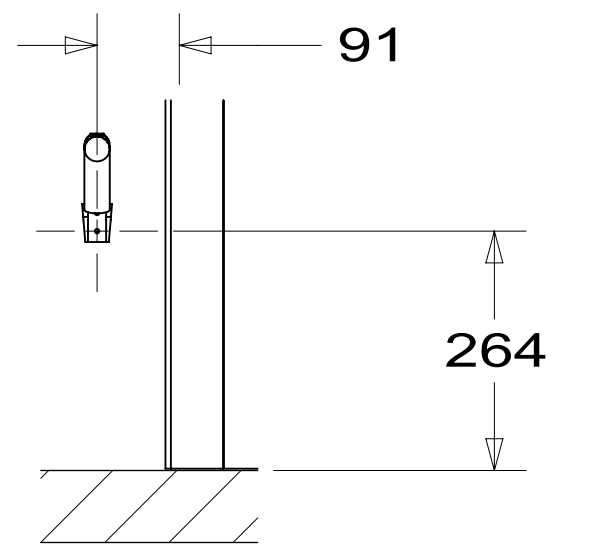
1 205  
CP-3  
21M

1 90 1B1  
1 100 265

P-1 1B1  
P-3 265  
A-15 1B1

ADAPTER-ANGLE  
165406-02-000

TRAP-WATERLESS  
165406-01-000



SECTION CD-CD  
(ROTATED)

STRAP-CONDUIT, 2"  
008406-01-000  
SCREW-PAN, HEAD  
000G39-08-12U (2)

ELBOW-1 1/2"  
136111-01-000

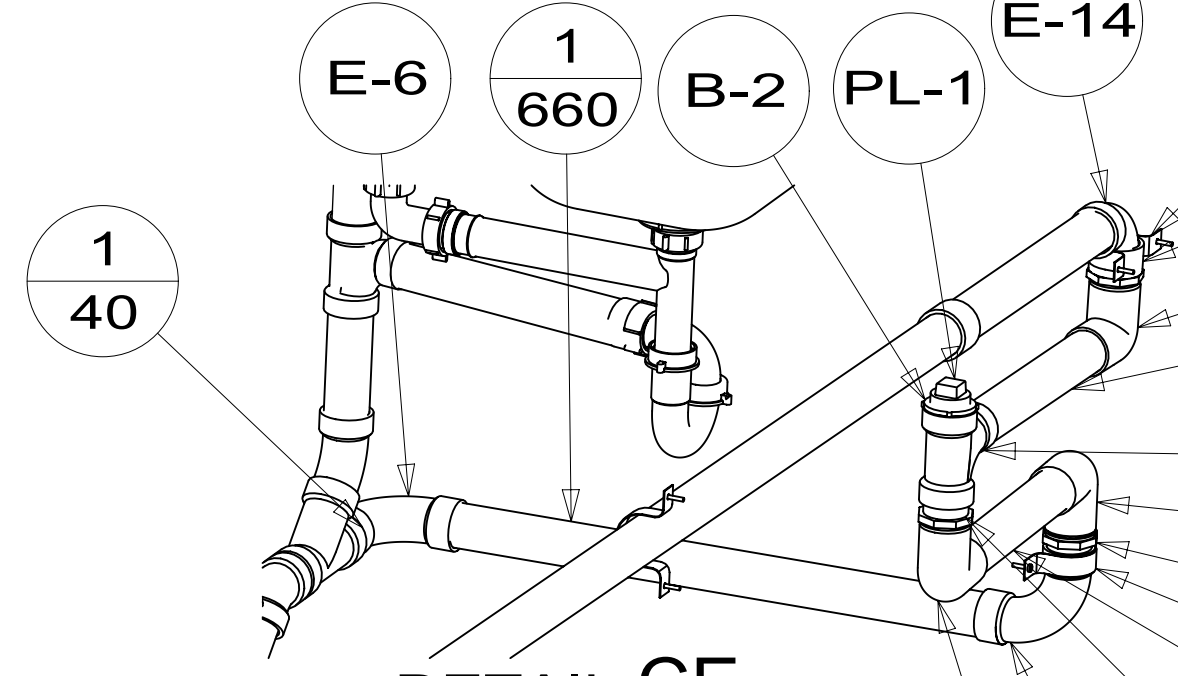
ELBOW-1 1/2"  
136111-01-000

STRAP-CONDUIT, 2"  
008406-01-000  
SCREW-PAN, HEAD  
000G39-08-12U (2)

A-13  
1 305  
T-1  
A-14  
1 325

VIEW CA

DETAIL CC



DETAIL CE  
(SHOWN W/OUT CABINETS AND FLOOR)

ELBOW-1 1/2"  
136111-01-000

TOILET  
160815-01-CHT  
SCREW  
087721-01-000 (8)

PLYWOOD  
000852-51-972 (2)

DESCRIPTION: <b>DRAINAGE SYSTEM INSTL</b>		
SHEET: 3 OF 4	ITEM/PART NO: 000030094 / 31661401000	REV
		1 06-Nov-2017

