

D

D

C

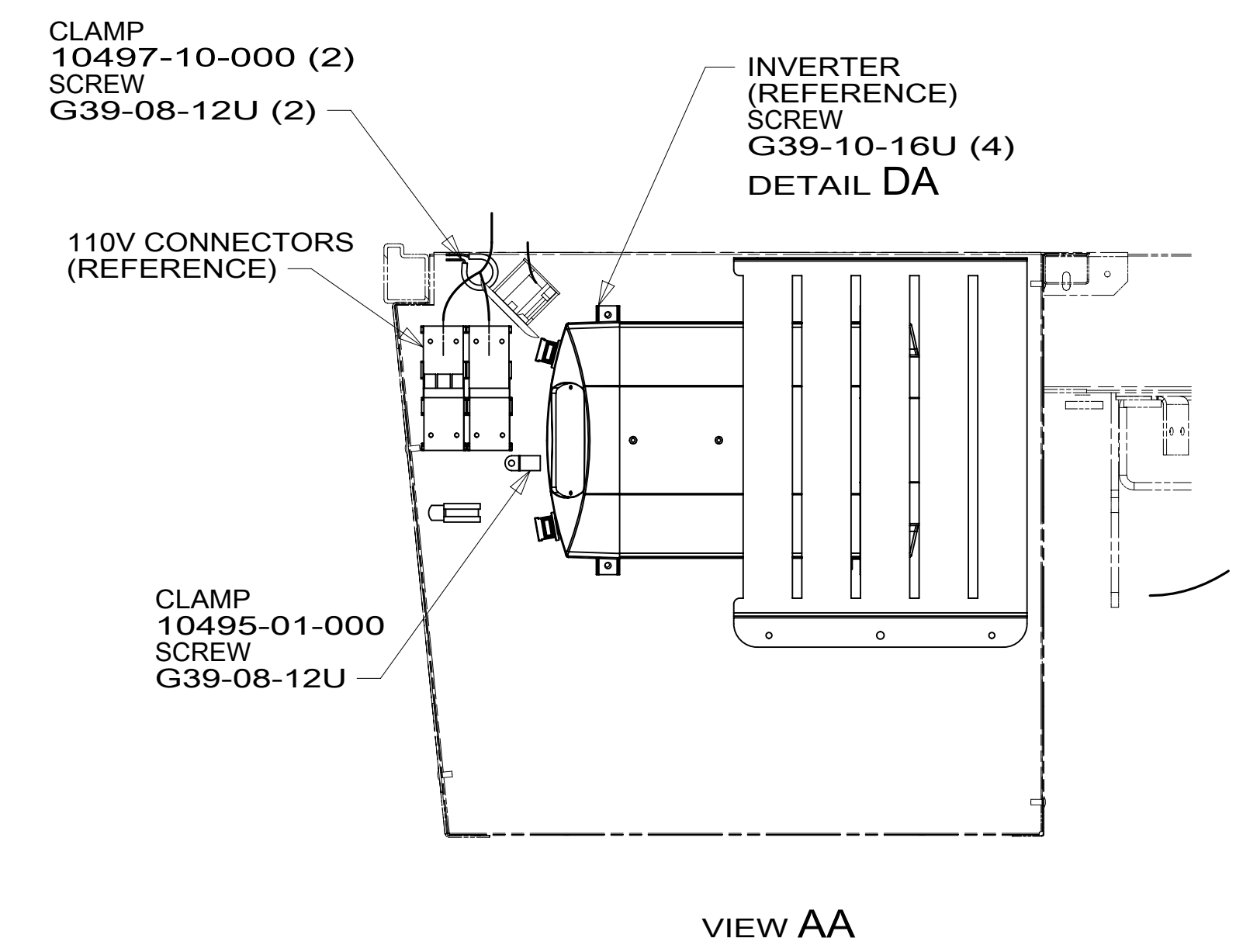
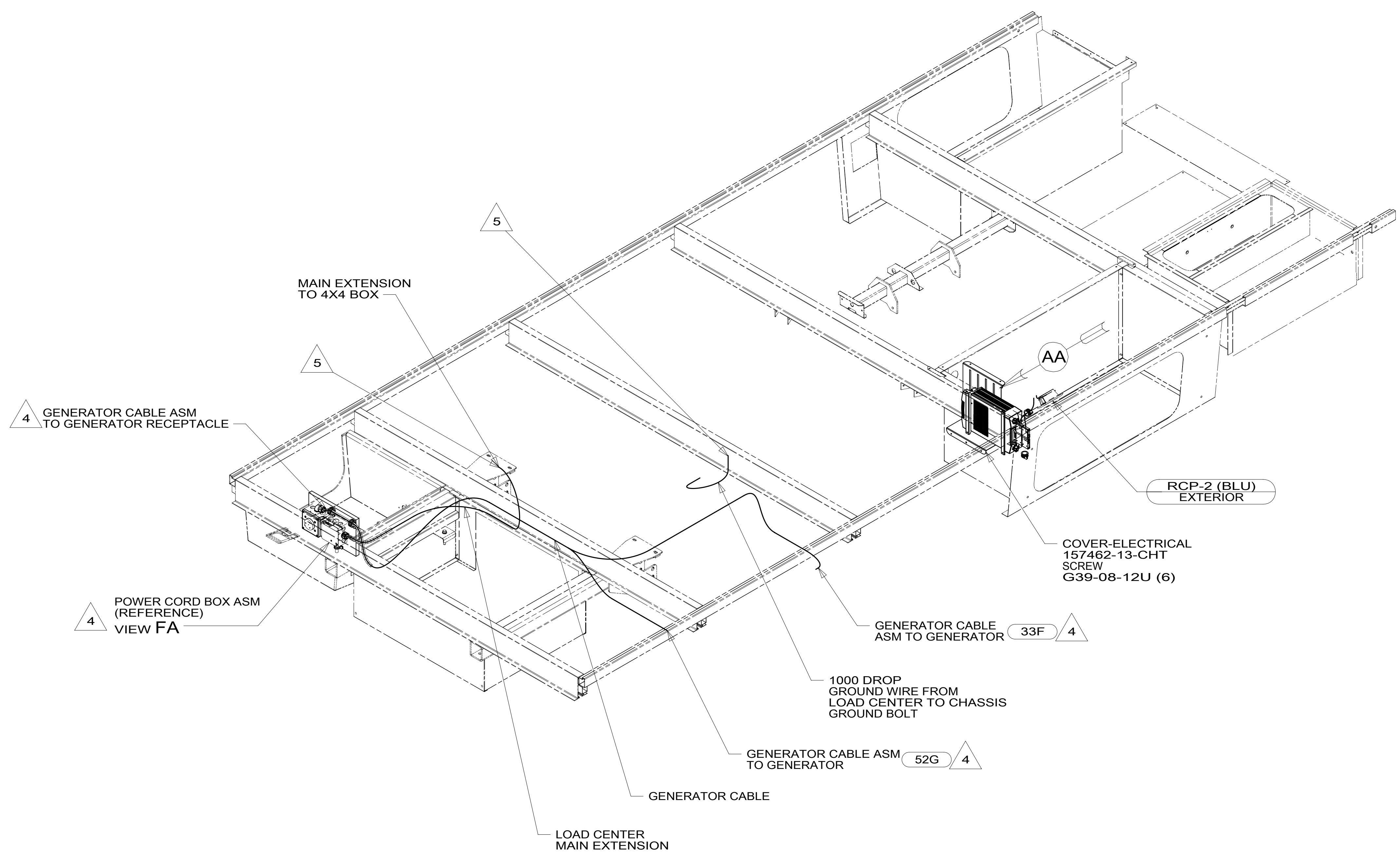
C

B

B

A

A



- NOTES:
- 5 WIRES ROUTED THROUGH FLOOR IN THIS AREA.
 - 4 SEE GENERATOR INSTL FOR ADDITIONAL INFORMATION.
 - 3. ALL GROUND WIRES TO BE COVERED WITH TUBING 8041-02-000.
 - 2. ALL 110V WIRE ARE TO BE CLAMPED WITH CLAMP 10497-05-000 WITHIN 200MM OF OUTLET BOXES, USE SCREW G67-10-12U.
 - 1. AT MINIMUM ALL WIRES TO BE SUPPORTED AND SECURED PER CODE REQUIREMENTS. USE CLAMP 10495 OR 10497 OR WIRE TIE 8343 OR 108046 AND SCREW G67-XX-XXX OR G56-XX-XXX AS APPROPRIATE FOR INSTALLATION.

- 52G GEN-3.6KW ONAN LP MICROQUIET
- 33F GEN-3.2 KW ONAN DIESEL
- 265 CODES/STANDARDS-CSA-CMVSS
- 1B1 CODES/STANDARDS USA

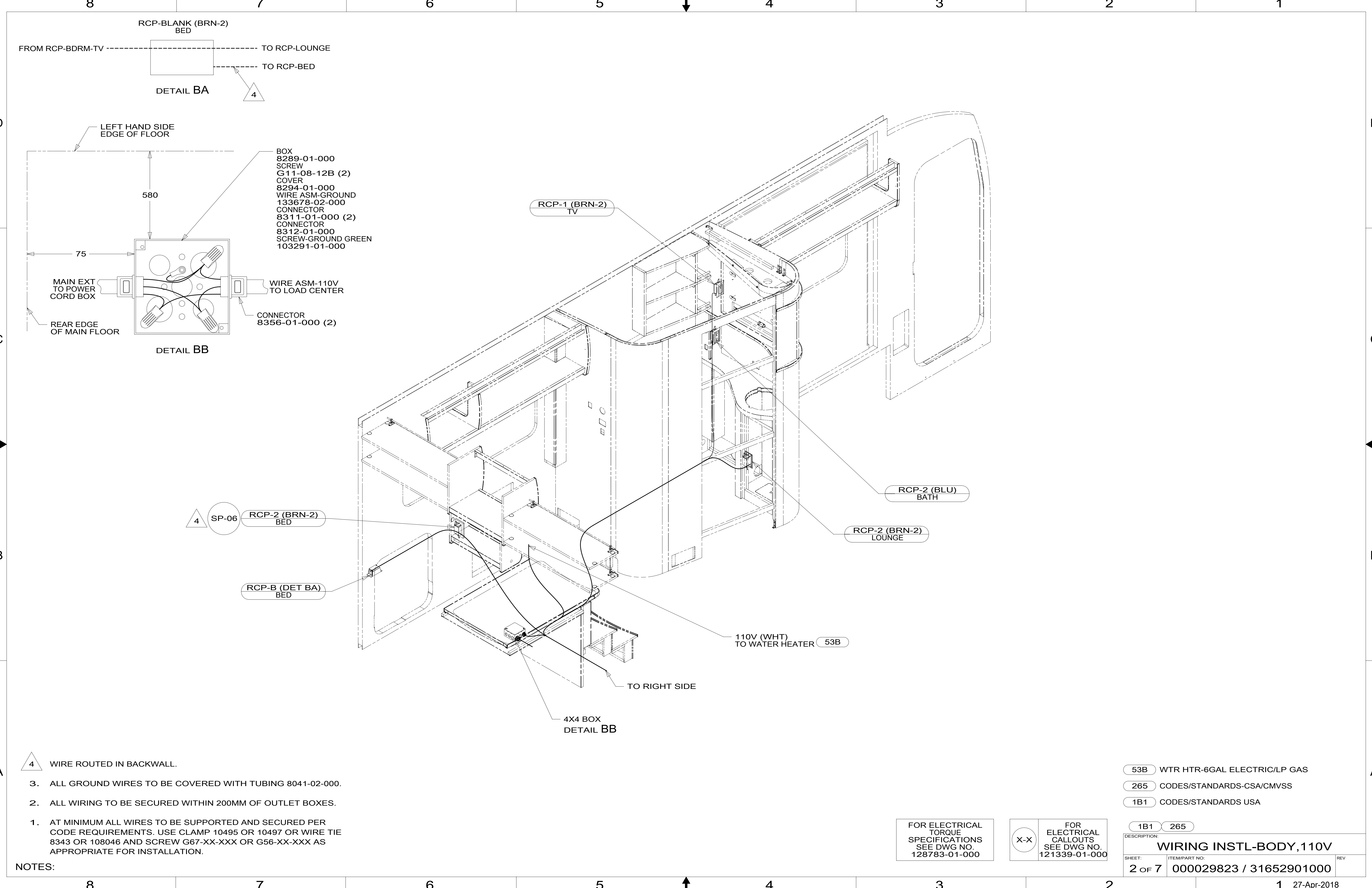


| | | |
|--|-----------------------------------|---------------------|
| DSNR: | ALL DIMENSIONS ARE IN MILLIMETERS | |
| DFFR: | | |
| UNSPECIFIED TOLERANCES: | MATERIAL: | |
| WHOLE DIM (X) : 3 | | |
| ONE-PLACE (X.X) : 1.5 | | |
| TWO-PLACE (X.XX) : 0.50 | | |
| ANGLE : 1° | | |
| REFER TO ES0018 FOR FASTENER TIGHTENING GUIDELINES | WEIGHT: (LBS) | FIRST USED: 17 H25T |

FOR ELECTRICAL TORQUE SPECIFICATIONS SEE DWG NO. 128783-01-000

FOR ELECTRICAL CALLOUTS SEE DWG NO. 121339-01-000

| | | |
|--------------------------------------|---------------------------------------|-------------|
| DESCRIPTION: WIRING INSTL-BODY, 110V | | |
| SHEET: 1 OF 7 | ITEM/PART NO: 000029823 / 31652901000 | REV: |
| REF: | 1 | 27-Apr-2018 |



RCP-BLANK (BRN-2)
BED

FROM RCP-BDRM-TV ----- TO RCP-LOUNGE
----- TO RCP-BED

DETAIL BA



580

75

- BOX 8289-01-000
- SCREW G11-08-12B (2)
- COVER 8294-01-000
- WIRE ASM-GROUND 133678-02-000
- CONNECTOR 8311-01-000 (2)
- CONNECTOR 8312-01-000
- SCREW-GROUND GREEN 103291-01-000

MAIN EXT TO POWER CORD BOX

WIRE ASM-110V TO LOAD CENTER

CONNECTOR 8356-01-000 (2)

DETAIL BB

RCP-1 (BRN-2)
TV

RCP-2 (BLU)
BATH

RCP-2 (BRN-2)
LOUNGE

4 SP-06 RCP-2 (BRN-2)
BED

RCP-B (DET BA)
BED

110V (WHT) TO WATER HEATER 53B

TO RIGHT SIDE

4X4 BOX
DETAIL BB

4 WIRE ROUTED IN BACKWALL.

3. ALL GROUND WIRES TO BE COVERED WITH TUBING 8041-02-000.

2. ALL WIRING TO BE SECURED WITHIN 200MM OF OUTLET BOXES.

1. AT MINIMUM ALL WIRES TO BE SUPPORTED AND SECURED PER CODE REQUIREMENTS. USE CLAMP 10495 OR 10497 OR WIRE TIE 8343 OR 108046 AND SCREW G67-XX-XXX OR G56-XX-XXX AS APPROPRIATE FOR INSTALLATION.

NOTES:

53B WTR HTR-6GAL ELECTRIC/LP GAS

265 CODES/STANDARDS-CSA/CMVSS

1B1 CODES/STANDARDS USA

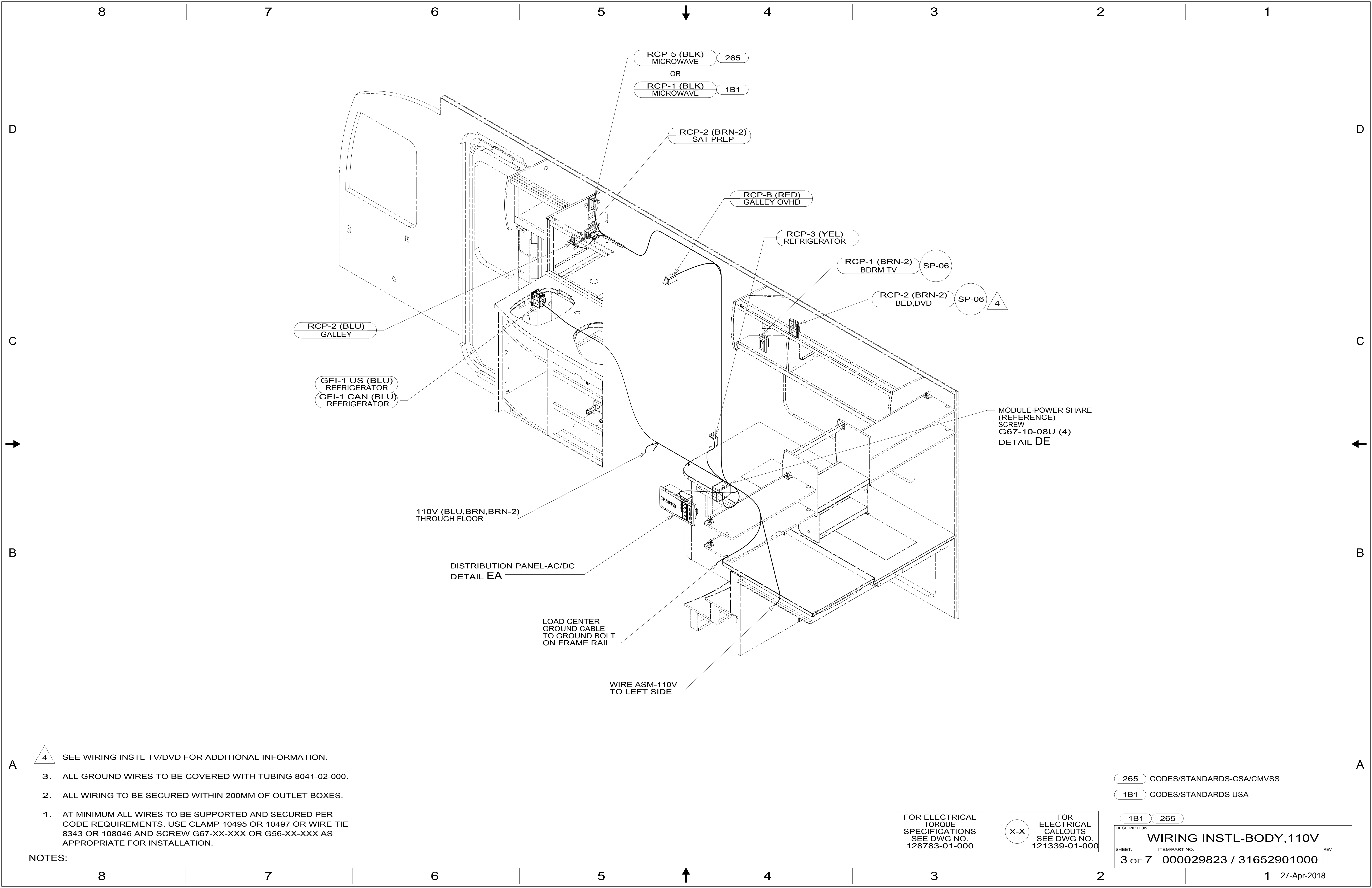
1B1 265

FOR ELECTRICAL TORQUE SPECIFICATIONS SEE DWG NO. 128783-01-000

FOR ELECTRICAL CALLOUTS SEE DWG NO. 121339-01-000

DESCRIPTION: WIRING INSTL-BODY, 110V

SHEET: 2 OF 7 ITEM/PART NO: 000029823 / 31652901000 REV



4 SEE WIRING INSTL-TV/DVD FOR ADDITIONAL INFORMATION.

3. ALL GROUND WIRES TO BE COVERED WITH TUBING 8041-02-000.

2. ALL WIRING TO BE SECURED WITHIN 200MM OF OUTLET BOXES.

1. AT MINIMUM ALL WIRES TO BE SUPPORTED AND SECURED PER CODE REQUIREMENTS. USE CLAMP 10495 OR 10497 OR WIRE TIE 8343 OR 108046 AND SCREW G67-XX-XXX OR G56-XX-XXX AS APPROPRIATE FOR INSTALLATION.

NOTES:

265 CODES/STANDARDS-CSA/CMVSS

1B1 CODES/STANDARDS USA

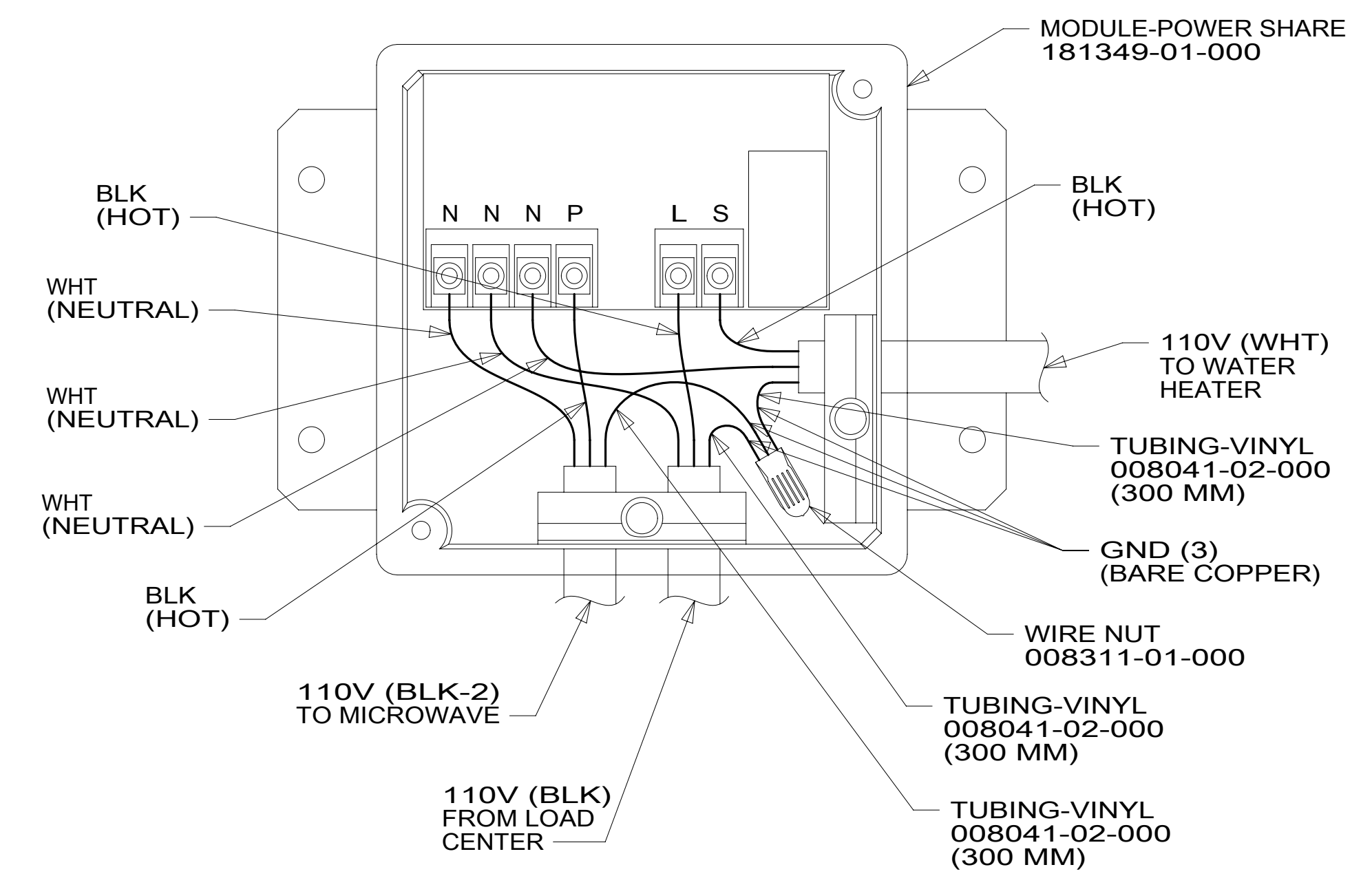
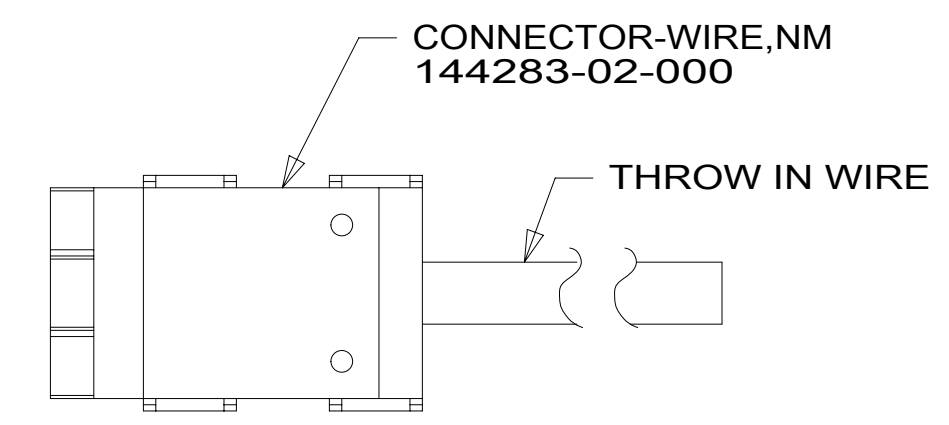
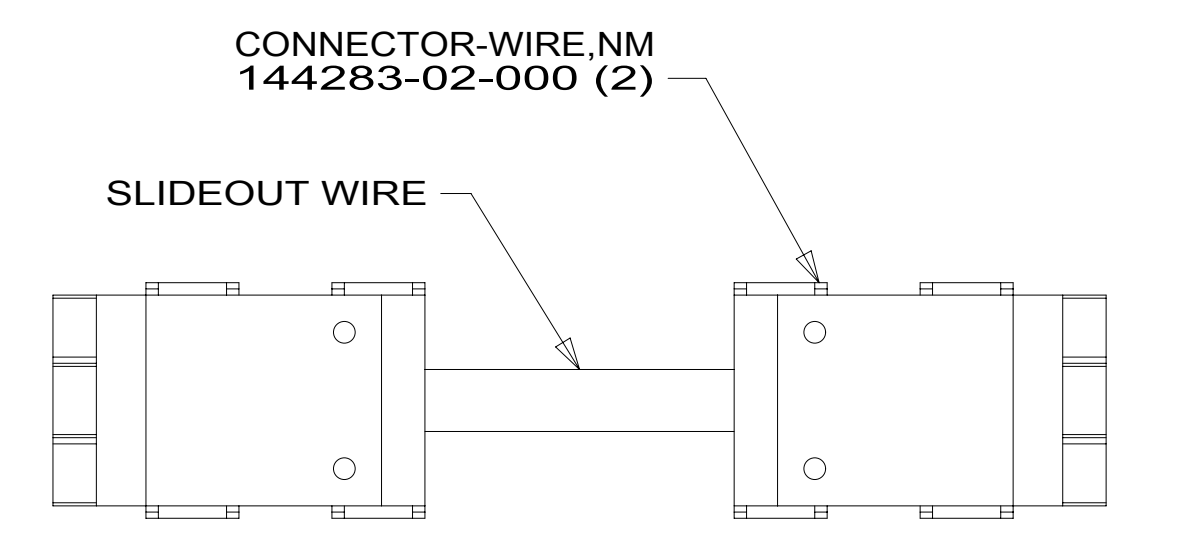
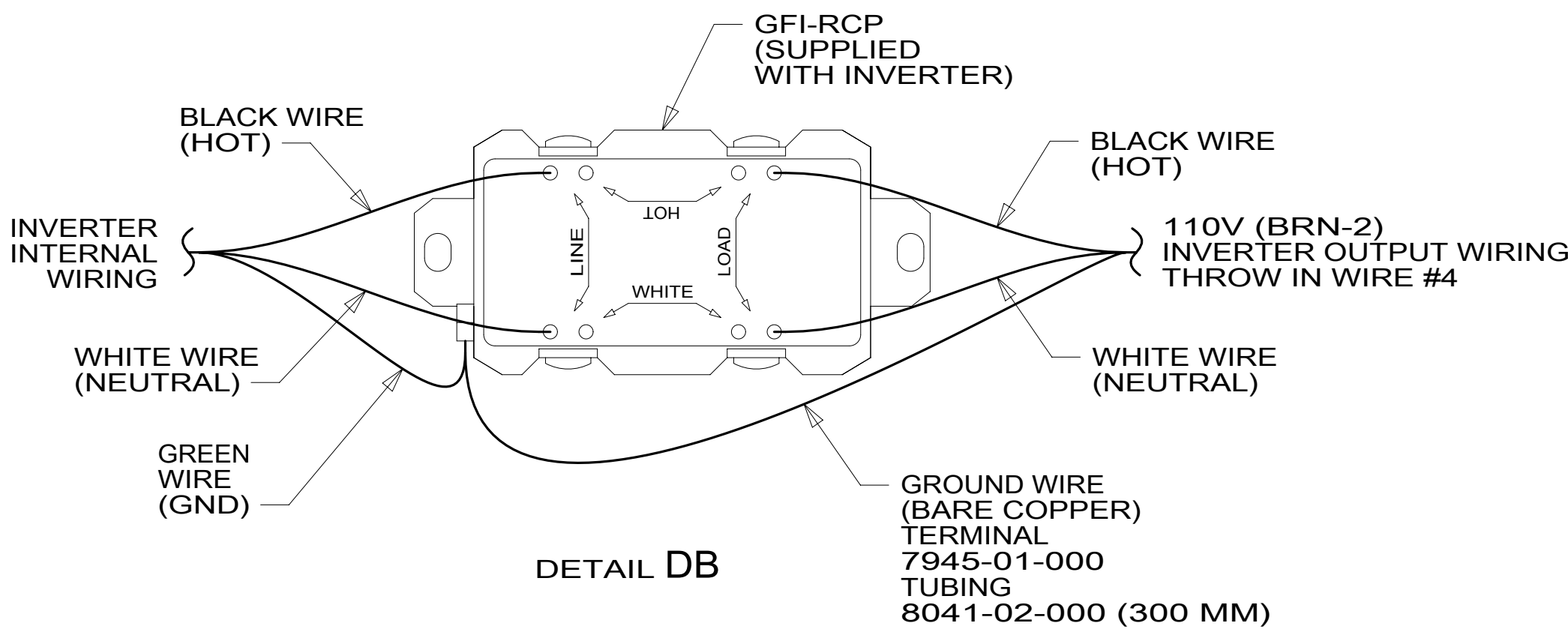
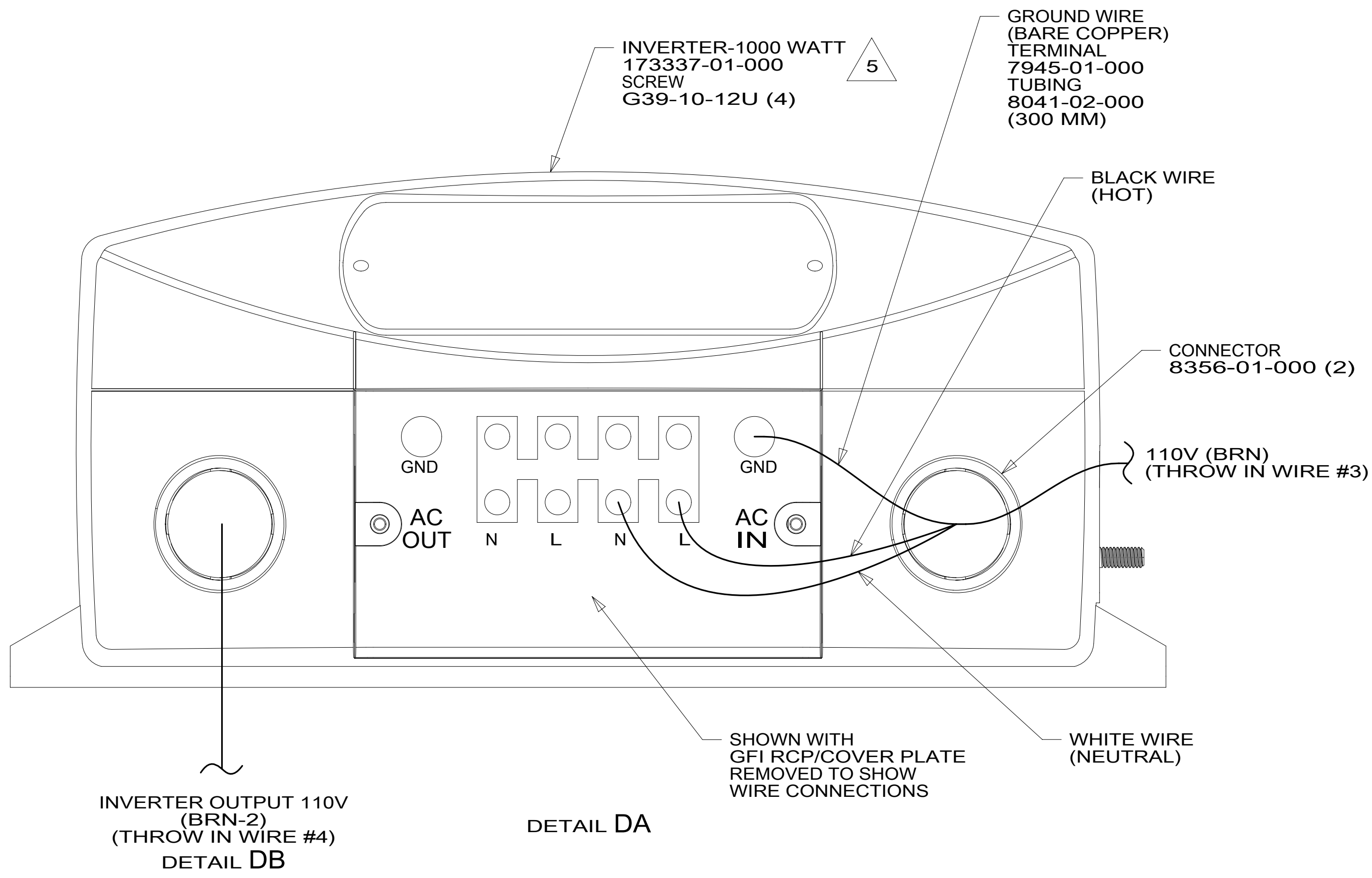
1B1 265

FOR ELECTRICAL TORQUE SPECIFICATIONS SEE DWG NO. 128783-01-000

FOR ELECTRICAL CALLOUTS SEE DWG NO. 121339-01-000

DESCRIPTION: WIRING INSTL-BODY, 110V

SHEET: 3 OF 7 ITEM/PART NO.: 000029823 / 31652901000 REV



| | | | |
|---------------------|-----|---------------|-----|
| GROUND | 8-G | 136145-02-030 | |
| GENERATOR CABLE ASM | 1B1 | 164957-01-050 | 33F |
| | 265 | 164957-03-050 | 33F |
| THROW IN WIRE #1 | 1B1 | ----- | |
| | 265 | ----- | |
| THROW IN WIRE #2 | 1B1 | ----- | |
| | 265 | ----- | |
| THROW IN WIRE #3 | 1B1 | 136131-03-003 | 2 3 |
| | 265 | 136134-03-003 | 2 3 |
| THROW IN WIRE #4 | 1B1 | 136131-19-005 | 2 3 |
| | 265 | 136134-19-005 | 2 3 |
| MAIN EXTENSION | 1B1 | 164957-05-022 | |
| | 265 | 164957-06-022 | |
| THROW IN WIRE #5 | 1B1 | 136131-19-215 | 2 |
| | 265 | 136134-19-215 | 2 |
| RED | 1B1 | 136135-07-044 | |
| | 265 | 136136-07-044 | |
| YEL | 1B1 | 136131-05-016 | |
| | 265 | 136134-05-016 | |
| BLK | 1B1 | 136135-06-012 | 53B |
| | 265 | 136136-06-012 | 53B |
| BLU | 1B1 | 136131-02-215 | |
| | 265 | 136134-02-215 | |
| BLK-2 | 1B1 | 136135-22-045 | 53B |
| | 265 | 136136-22-045 | 53B |
| WHT | 1B1 | 136135-09-040 | 53B |
| | 265 | 136136-09-040 | 53B |
| MAIN | 1B1 | 136137-01-036 | |
| | 265 | 136138-01-036 | |
| BRN | 1B1 | 136131-03-027 | 2 |
| | 265 | 136134-03-027 | 2 |
| BLK | 1B1 | 136135-06-050 | 1BU |
| | 265 | 136136-06-050 | 1BU |

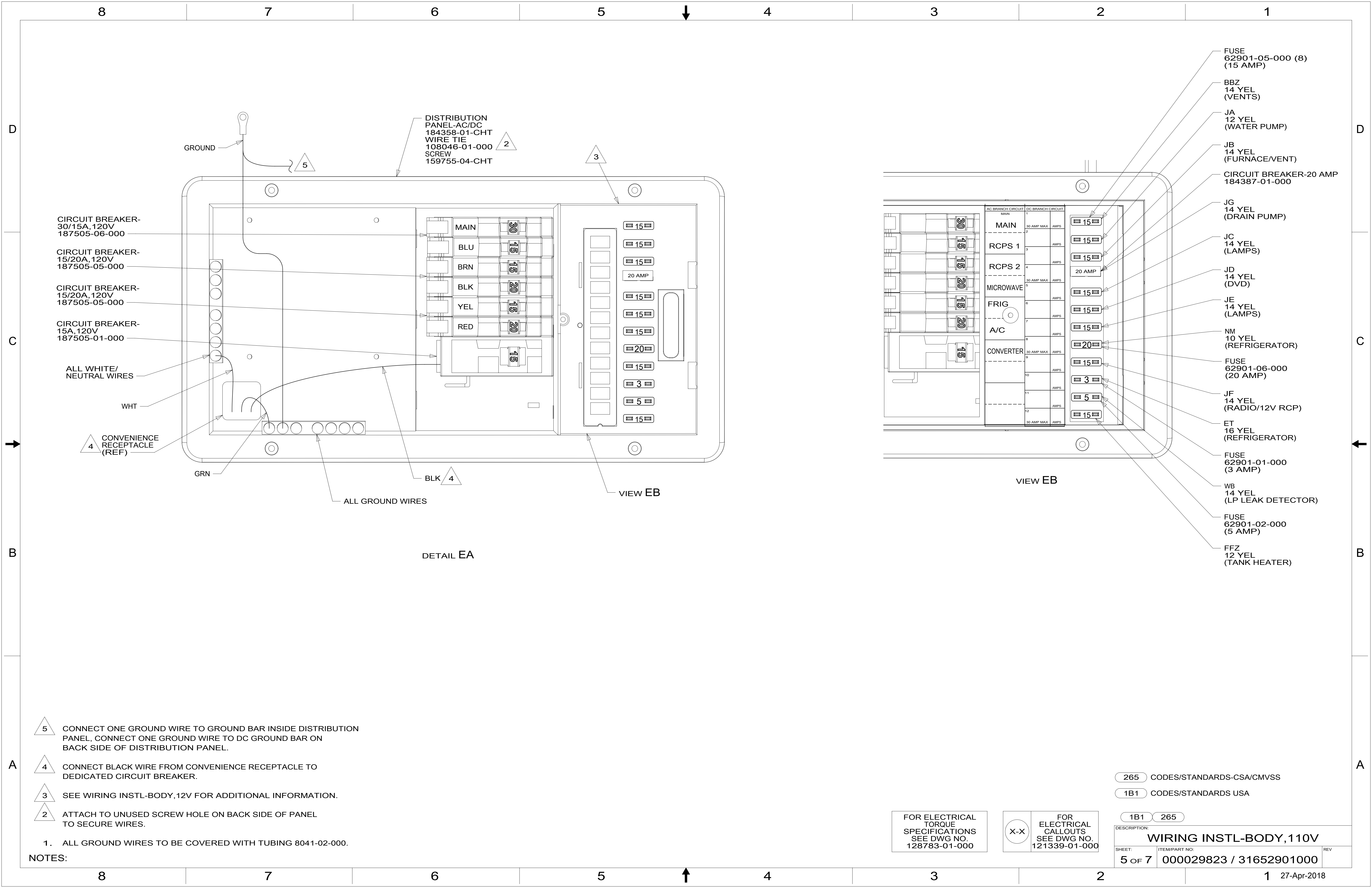
- 5 INVERTER SUPPLIED WITH REMOTE PANEL. SEND PANEL TO MANUFACTURING LINE.
- 4 FOR CONNECTOR INSTALLATION SEE DETAIL DC.
- 3 FOR ADDITIONAL INFORMATION SEE DETAIL DA.
- 2 FOR CONNECTOR INSTALLATION SEE DETAIL DD.
1. ALL GROUND WIRES TO BE COVERED WITH TUBING 8041-02-000.

FOR ELECTRICAL TORQUE SPECIFICATIONS SEE DWG NO. 128783-01-000

FOR ELECTRICAL CALLOUTS SEE DWG NO. 121339-01-000

- 1BU WTR HTR TKLS W/RECIRCUL PUMP
- 53B WTR HTR-6GAL ELECTRIC/LP GAS
- 33F GEN-3.5 KW ONAN DIESEL
- 265 CODES/STANDARDS-CSA/CMVSS
- 1B1 CODES/STANDARDS USA

| DESCRIPTION: | 1B1 | 265 |
|--------------------------------|--------|---------------------------------------|
| WIRING INSTL-BODY, 110V | | |
| SHEET: | 4 OF 7 | ITEM/PART NO. 000029823 / 31652901000 |
| REV | | 27-Apr-2018 |



CIRCUIT BREAKER-30/15A, 120V
187505-06-000

CIRCUIT BREAKER-15/20A, 120V
187505-05-000

CIRCUIT BREAKER-15/20A, 120V
187505-05-000

CIRCUIT BREAKER-15A, 120V
187505-01-000

ALL WHITE/NEUTRAL WIRES

WHT

CONVENIENCE RECEPTACLE (REF)

GROUND

GRN

MAIN
BLU
BRN
BLK
YEL
RED

DETAIL EA

ALL GROUND WIRES

VIEW EB

VIEW EB

FUSE 62901-05-000 (8)
(15 AMP)

BBZ
14 YEL
(VENTS)

JA
12 YEL
(WATER PUMP)

JB
14 YEL
(FURNACE/VENT)

CIRCUIT BREAKER-20 AMP
184387-01-000

JG
14 YEL
(DRAIN PUMP)

JC
14 YEL
(LAMPS)

JD
14 YEL
(DVD)

JE
14 YEL
(LAMPS)

NM
10 YEL
(REFRIGERATOR)

FUSE 62901-06-000
(20 AMP)

JF
14 YEL
(RADIO/12V RCP)

ET
16 YEL
(REFRIGERATOR)

FUSE 62901-01-000
(3 AMP)

WB
14 YEL
(LP LEAK DETECTOR)

FUSE 62901-02-000
(5 AMP)

FFZ
12 YEL
(TANK HEATER)

5 CONNECT ONE GROUND WIRE TO GROUND BAR INSIDE DISTRIBUTION PANEL, CONNECT ONE GROUND WIRE TO DC GROUND BAR ON BACK SIDE OF DISTRIBUTION PANEL.

4 CONNECT BLACK WIRE FROM CONVENIENCE RECEPTACLE TO DEDICATED CIRCUIT BREAKER.

3 SEE WIRING INSTL-BODY, 12V FOR ADDITIONAL INFORMATION.

2 ATTACH TO UNUSED SCREW HOLE ON BACK SIDE OF PANEL TO SECURE WIRES.

1. ALL GROUND WIRES TO BE COVERED WITH TUBING 8041-02-000.

NOTES:

265 CODES/STANDARDS-CSA/CMVSS

1B1 CODES/STANDARDS USA

1B1 265

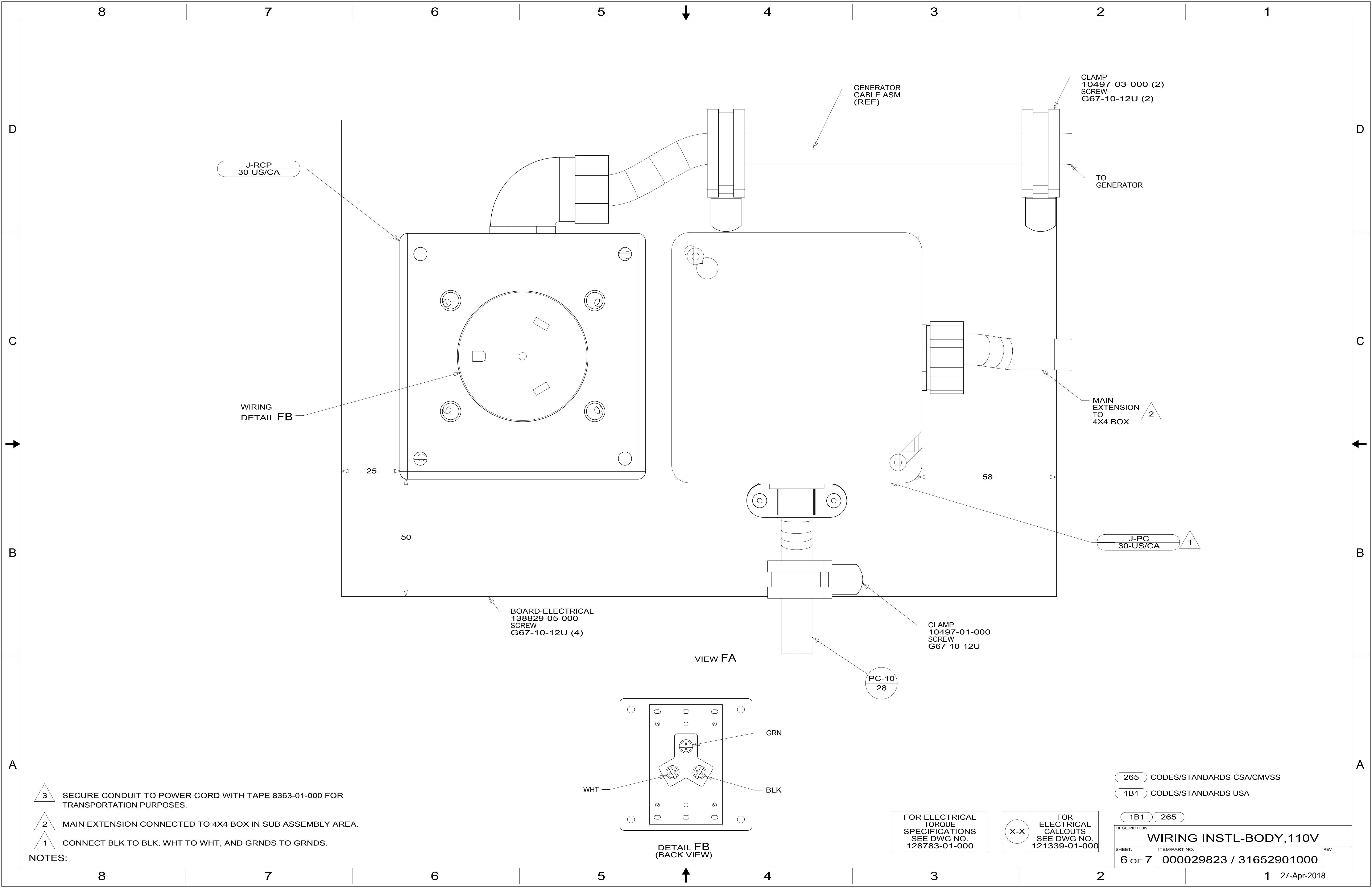
FOR ELECTRICAL TORQUE SPECIFICATIONS SEE DWG NO. 128783-01-000

FOR ELECTRICAL CALLOUTS SEE DWG NO. 121339-01-000

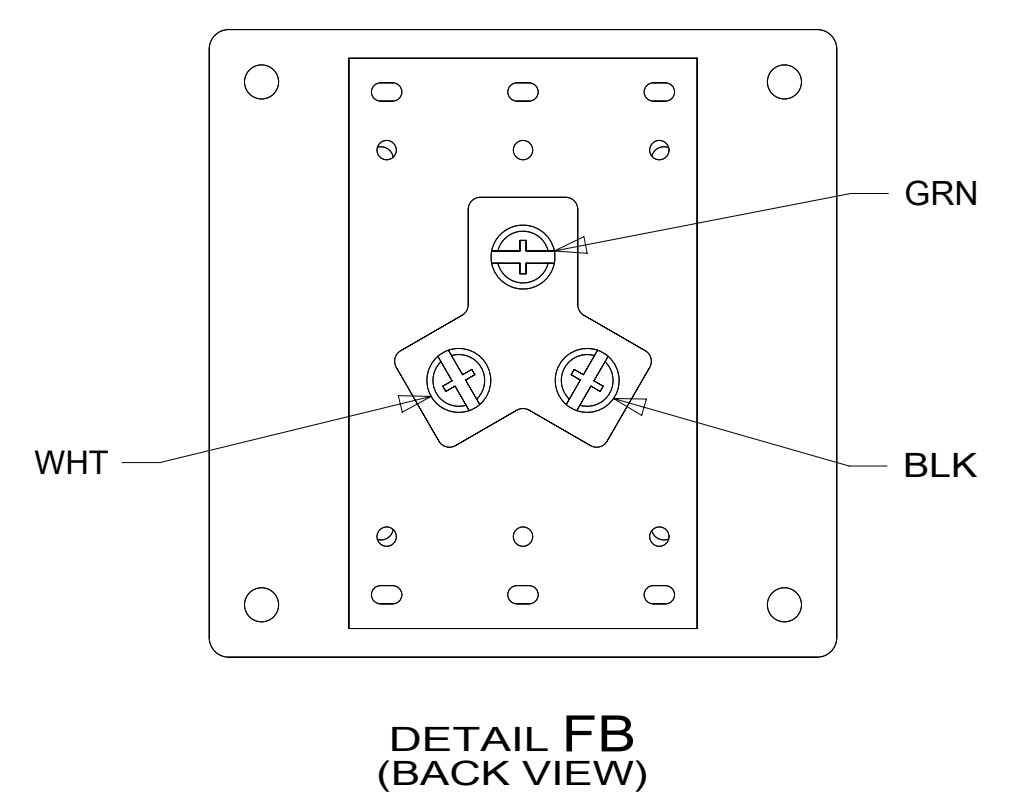
DESCRIPTION:
WIRING INSTL-BODY, 110V

SHEET: 5 OF 7 ITEM/PART NO.: 000029823 / 31652901000 REV

1 27-Apr-2018



- NOTES:
- 3 SECURE CONDUIT TO POWER CORD WITH TAPE 8363-01-000 FOR TRANSPORTATION PURPOSES.
 - 2 MAIN EXTENSION CONNECTED TO 4X4 BOX IN SUB ASSEMBLY AREA.
 - 1 CONNECT BLK TO BLK, WHT TO WHT, AND GRNDS TO GRNDS.

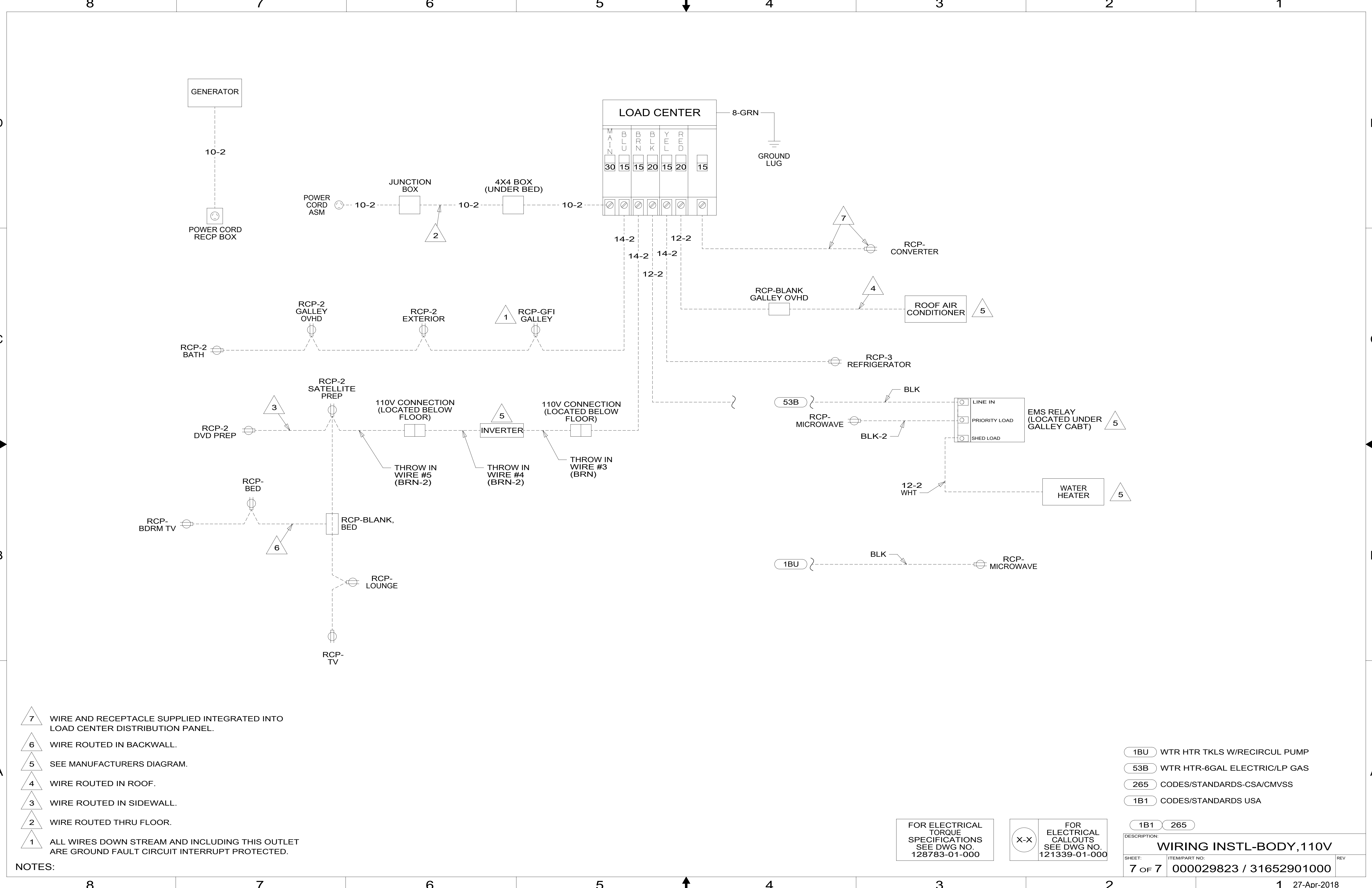


FOR ELECTRICAL TORQUE SPECIFICATIONS SEE DWG NO. 128783-01-000

FOR ELECTRICAL CALLOUTS SEE DWG NO. 121339-01-000

265 CODES/STANDARDS-CSA/CMVSS
 1B1 CODES/STANDARDS USA

| | |
|--------------------------------|-------------------------|
| DESCRIPTION: | |
| WIRING INSTL-BODY, 110V | |
| SHEET: | ITEM/PART NO: |
| 6 OF 7 | 000029823 / 31652901000 |
| REV | |
| 1 27-Apr-2018 | |



- NOTES:
- 7 WIRE AND RECEPTACLE SUPPLIED INTEGRATED INTO LOAD CENTER DISTRIBUTION PANEL.
 - 6 WIRE ROUTED IN BACKWALL.
 - 5 SEE MANUFACTURERS DIAGRAM.
 - 4 WIRE ROUTED IN ROOF.
 - 3 WIRE ROUTED IN SIDEWALL.
 - 2 WIRE ROUTED THRU FLOOR.
 - 1 ALL WIRES DOWN STREAM AND INCLUDING THIS OUTLET ARE GROUND FAULT CIRCUIT INTERRUPT PROTECTED.

FOR ELECTRICAL TORQUE SPECIFICATIONS SEE DWG NO. 128783-01-000

FOR ELECTRICAL CALLOUTS SEE DWG NO. 121339-01-000

- 1BU WTR HTR TKLS W/RECIRCUL PUMP
- 53B WTR HTR-6GAL ELECTRIC/LP GAS
- 265 CODES/STANDARDS-CSA/CMVSS
- 1B1 CODES/STANDARDS USA

| | | | |
|--------------------------------|-------------------------|---------|--|
| DESCRIPTION: | | 1B1 265 | |
| WIRING INSTL-BODY, 110V | | | |
| SHEET: | ITEM/PART NO.: | REV | |
| 7 OF 7 | 000029823 / 31652901000 | | |