

- NOTES:**
- 11 INSTALL NUT SO THAT IT IS FLUSH WITH TOP OF EXTENDER-SHAFT.
  - 10 COIL AND SECURE WIRES TO CHASSIS WITH (60T)
  - 9 REMOVE AND DISCARD SUPPLIED PLASTIC COVER INSTALLED ON PASSENGER SEAT PEDESTAL
  - 8 LOCATED BELOW PASSENGER SEAT.
  - 7 12 PIN HOUSING TO BE ROUTED ABOVE FLOOR TO CONTROL PANEL.
  - 6 ROUTE GENERATOR CONTROL CABLE ALONG WIRE ASM-CHASSIS THROUGH FLOOR IN THIS AREA.
  - 5 CABLE SUPPLIED WITH DIESEL GENERATOR.
  - 4 COIL AND SECURE WIRES TO BEHIND DASH PANEL WITH (60T)
  - 3 CUT WIRE TIE AROUND SPRINTER SEAL, ROUTE THE CHASSIS WIRING THROUGH HOLE AND WIRE TIE SEAL WITH WIRE TIE 8343-04-000.
  - 2 10 PIN HOUSING CONNECTS TO GENERATOR
1. SECURE CONDUIT 41953, TAB AS REQUIRED, OVER ALL WIRES IN CONTACT WITH SHARP EDGES.

- (60T) JACKS-STABILIZING,ELECT W/O
- (64A) JACKS-STABILIZING, ELECTRIC
- (52G) GEN-3.6KW ONAN LP MICROQUIET
- (33F) GEN-3.5 KW ONAN DIESEL
- (15D) INFOTAINMENT CENTER/GPS
- (265) CODES/STANDARDS-CSA/CMVSS
- (1B1) CODES/STANDARDS USA

**WINNEBAGO**  
COPYRIGHT 2016 WINNEBAGO INDUSTRIES, INC.

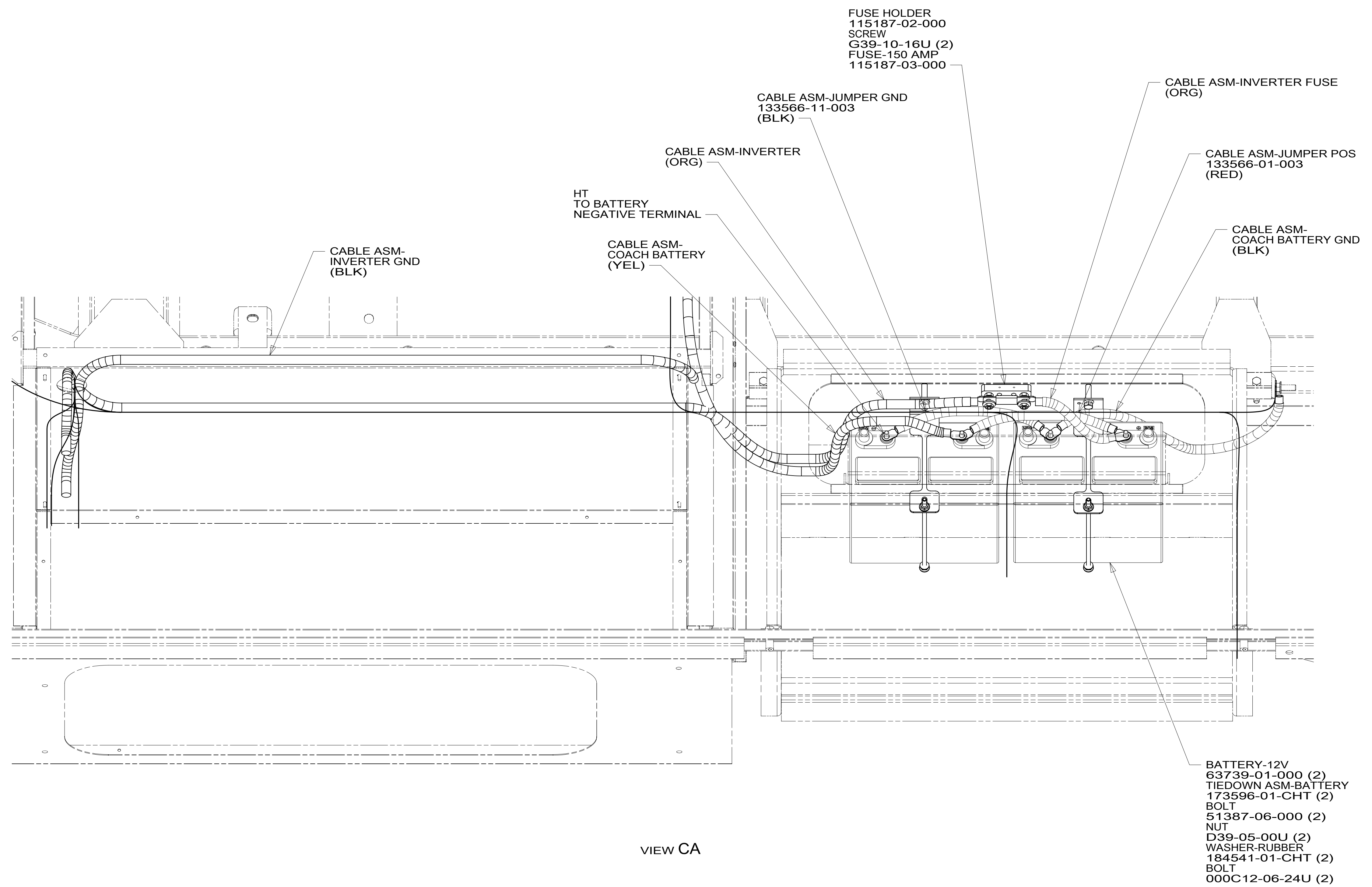
DSNR:	ALL DIMENSIONS ARE IN MILLIMETERS	
DFFR:		
UNSPECIFIED TOLERANCES:	MATERIAL:	
WHOLE DIM (X) : 3		
ONE-PLACE (X.X) : 1.5		
TWO-PLACE (X.XX) : 0.50		
ANGLE : 1°		
REFER TO ES0018 FOR FASTENER TIGHTENING GUIDELINES	WEIGHT: (LBS)	FIRST USED:
		17 H25T
DESCRIPTION: <b>WIRING INSTL-CHASSIS</b>		
SHEET: 1 OF 6	ITEM/PART NO: 000029821 / 31652801000	REV:
	REF:	

FOR ELECTRICAL TORQUE SPECIFICATIONS SEE DWG NO. 128783-01-000

FOR ELECTRICAL CALLOUTS SEE DWG NO. 121339-01-000



CABLE ASM-STARTER (RED)		141415-37-013
CABLE ASM-COACH BATTERY (YEL)		141415-52-050
CABLE ASM-COACH BATTERY GND (BLK)		133567-12-009
CABLE ASM-GENERATOR (GRN)	33F	141416-42-070
CABLE ASM-GENERATOR GND (BLK)	33F	133567-12-006
CABLE ASM-GENERATOR (GRN)	52G	141415-42-075
CABLE ASM-GENERATOR GND (BLK)	52G	133566-12-017
CABLE ASM-INVERTER FUSE (ORG)		141415-62-003
CABLE ASM-INVERTER GND (BLK)		133566-12-011
CABLE ASM-INVERTER (ORG)		141415-62-023



VIEW CA

- 52G GEN-3.6KW ONAN LP MICROQUIET
- 33F GEN-3.2 KW ONAN DIESEL
- 265 CODES/STANDARDS-CSA/CMVSS
- 1B1 CODES/STANDARDS USA

FOR ELECTRICAL TORQUE SPECIFICATIONS SEE DWG NO. 128783-01-000

FOR ELECTRICAL CALLOUTS SEE DWG NO. 121339-01-000

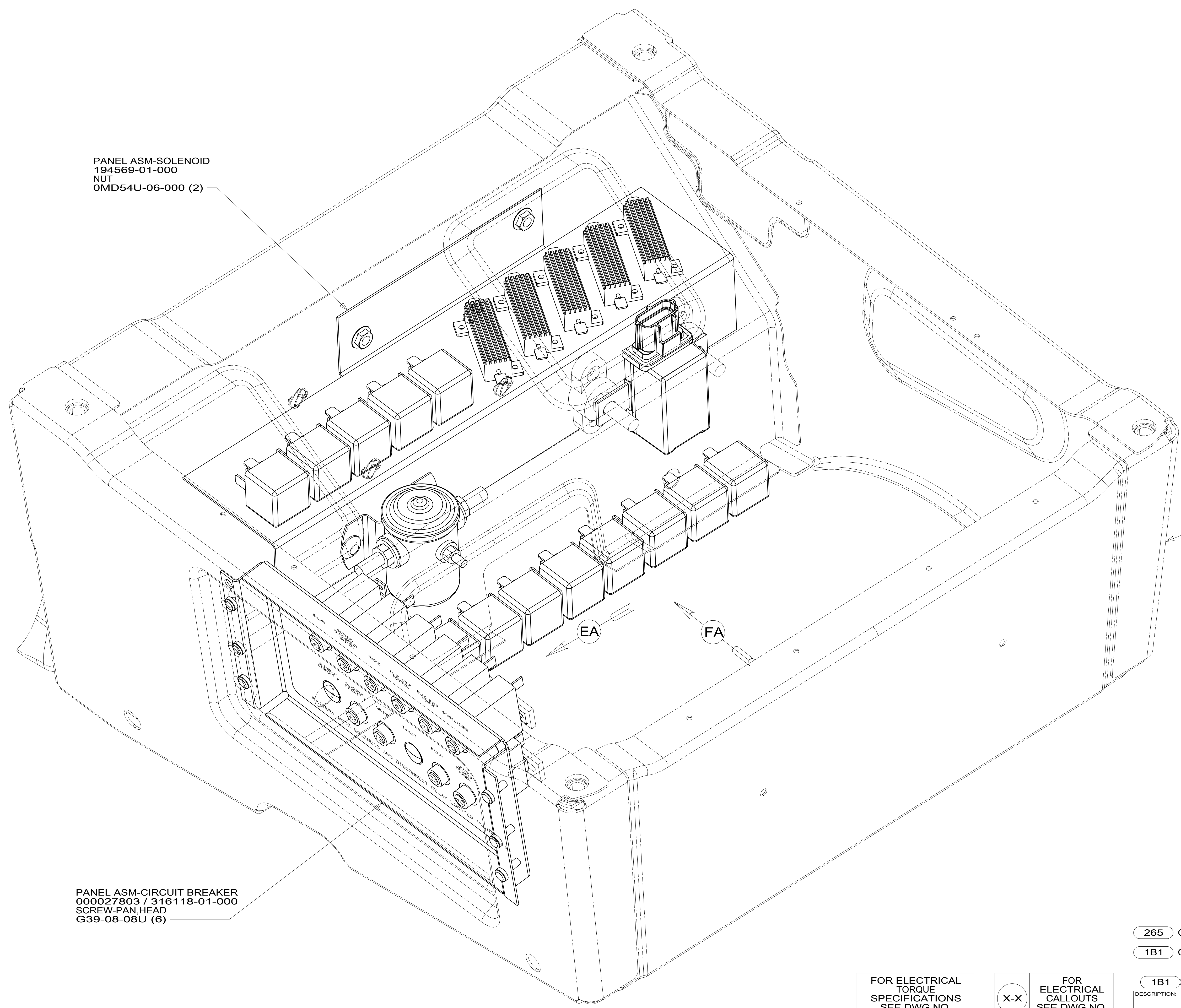
DESCRIPTION:	1B1 265	
<b>WIRING INSTL-CHASSIS</b>		
SHEET:	ITEM/PART NO:	REV
3 OF 6	000029821 / 31652801000	

NOTES:  
1. BATTERY CABLES ARE NOT TO BE ROUTED OVER BATTERY FILL CAPS.



8 7 6 5 4 3 2 1

D  
C  
B  
A



PANEL ASM-SOLENOID  
194569-01-000  
NUT  
OMD54U-06-000 (2)

PANEL ASM-CIRCUIT BREAKER  
000027803 / 316118-01-000  
SCREW-PAN HEAD  
G39-08-08U (6)

PASSENGER SIDE  
SEAT PEDESTAL  
(REF)

EA

FA

X-X

FOR ELECTRICAL  
TORQUE  
SPECIFICATIONS  
SEE DWG NO.  
128783-01-000

FOR  
ELECTRICAL  
CALLOUTS  
SEE DWG NO.  
121339-01-000

265 CODES/STANDARDS-CSA/CMVSS  
1B1 CODES/STANDARDS USA

1B1 265

DESCRIPTION:  
**WIRING INSTL-CHASSIS**

SHEET: 4 OF 6 ITEM/PART NO: 000029821 / 31652801000 REV

8 7 6 5 4 3 2 1 27-Apr-2018



D

D

C

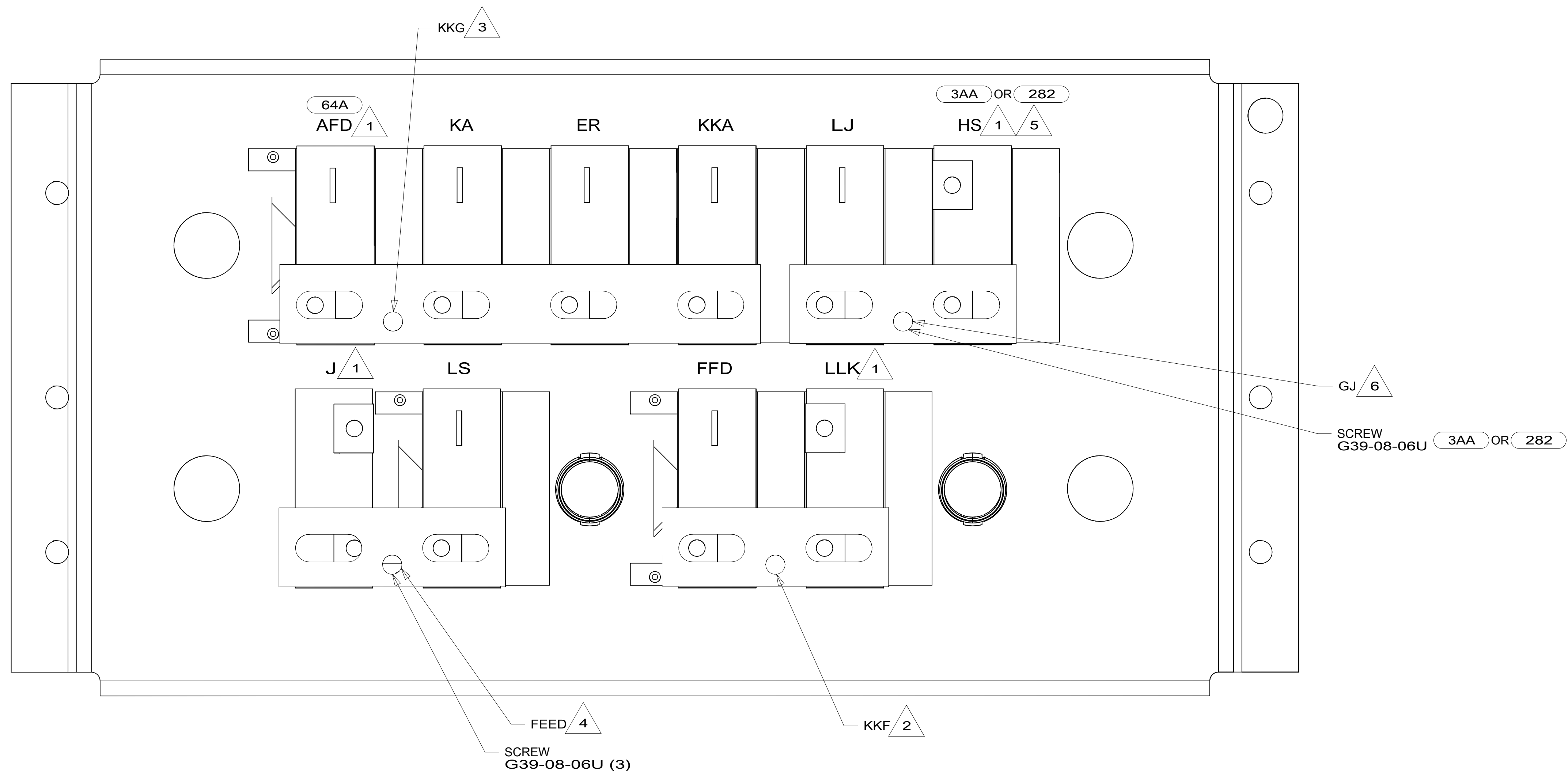
C

B

B

A

A



VIEW EA

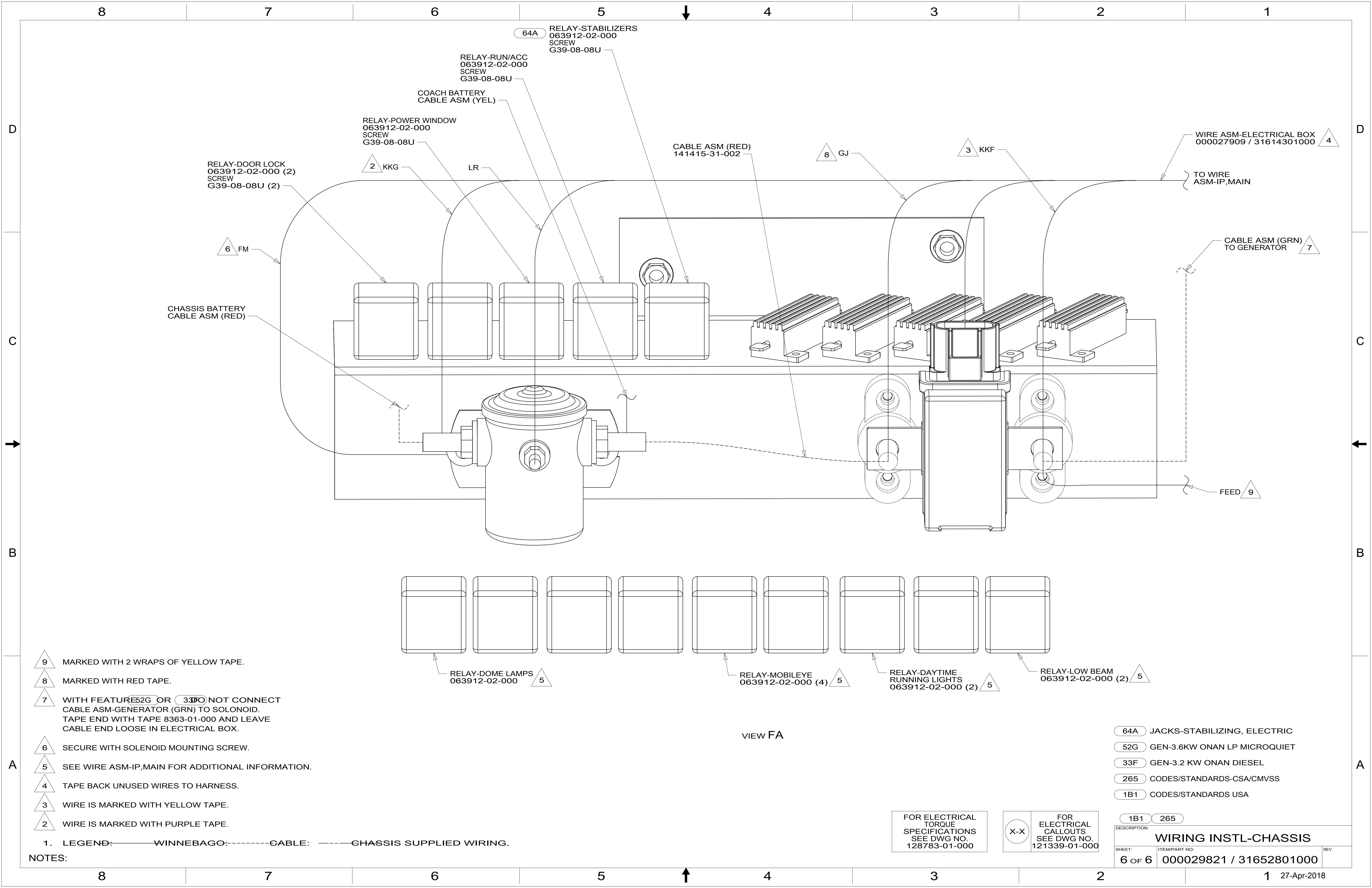
- NOTES:
- 7. TAPE BACK UNUSED WIRES TO HARNESS.
  - 6 MARKED WITH RED TAPE.
  - 5 MARKED WITH WHITE TAPE.
  - 4 MARKED WITH 2 WRAPS OF YELLOW TAPE.
  - 3 MARKED WITH PURPLE TAPE.
  - 2 MARKED WITH YELLOW TAPE.
  - 1 CIRCUIT FROM WIRE ASM-CHASSIS.

- 64A JACKS-STABILIZING, ELECTRIC
- 282 SOLAR PANEL - 100 WATT
- 3AA SOLAR PANEL/BATT CHARGER SYS
- 265 CODES/STANDARDS-CSA/CMVSS
- 1B1 CODES/STANDARDS USA

FOR ELECTRICAL TORQUE SPECIFICATIONS SEE DWG NO. 128783-01-000

FOR ELECTRICAL CALLOUTS SEE DWG NO. 121339-01-000

DESCRIPTION:	1B1 265	
<b>WIRING INSTL-CHASSIS</b>		
SHEET:	ITEM/PART NO:	REV
5 OF 6	000029821 / 31652801000	



RELAY-DOOR LOCK  
063912-02-000 (2)  
SCREW  
G39-08-08U (2)

CHASSIS BATTERY  
CABLE ASM (RED)

RELAY-POWER WINDOW  
063912-02-000  
SCREW  
G39-08-08U

COACH BATTERY  
CABLE ASM (YEL)

RELAY-RUN/ACC  
063912-02-000  
SCREW  
G39-08-08U

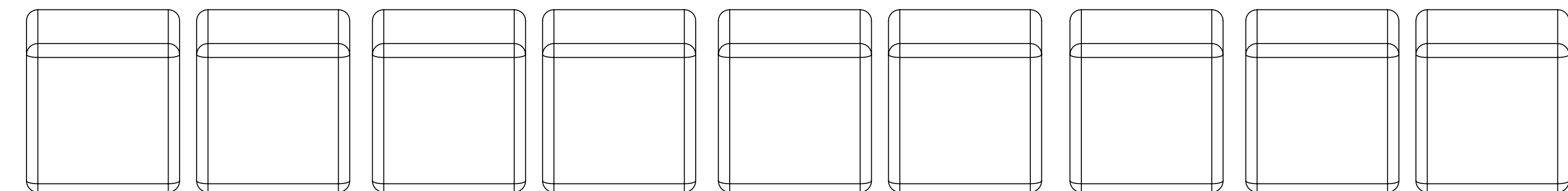
64A RELAY-STABILIZERS  
063912-02-000  
SCREW  
G39-08-08U

CABLE ASM (RED)  
141415-31-002

WIRE ASM-ELECTRICAL BOX  
000027909 / 31614301000

CABLE ASM (GRN)  
TO GENERATOR

FEED



RELAY-DOME LAMPS  
063912-02-000

RELAY-MOBILEYE  
063912-02-000 (4)

RELAY-DAYTIME  
RUNNING LIGHTS  
063912-02-000 (2)

RELAY-LOW BEAM  
063912-02-000 (2)

VIEW FA

- 9 MARKED WITH 2 WRAPS OF YELLOW TAPE.
- 8 MARKED WITH RED TAPE.
- 7 WITH FEATURE 52G OR 33F NOT CONNECT CABLE ASM-GENERATOR (GRN) TO SOLENOID. TAPE END WITH TAPE 8363-01-000 AND LEAVE CABLE END LOOSE IN ELECTRICAL BOX.
- 6 SECURE WITH SOLENOID MOUNTING SCREW.
- 5 SEE WIRE ASM-IP,MAIN FOR ADDITIONAL INFORMATION.
- 4 TAPE BACK UNUSED WIRES TO HARNESS.
- 3 WIRE IS MARKED WITH YELLOW TAPE.
- 2 WIRE IS MARKED WITH PURPLE TAPE.

NOTES:  
1. LEGEND: — WINNEBAGO: - - - - - CABLE: - - - - - CHASSIS SUPPLIED WIRING.

- 64A JACKS-STABILIZING, ELECTRIC
- 52G GEN-3.6KW ONAN LP MICROQUIET
- 33F GEN-3.2 KW ONAN DIESEL
- 265 CODES/STANDARDS-CSA/CMVSS
- 1B1 CODES/STANDARDS USA

FOR ELECTRICAL  
TORQUE  
SPECIFICATIONS  
SEE DWG NO.  
128783-01-000

FOR ELECTRICAL  
CALLOUTS  
SEE DWG NO.  
121339-01-000

DESCRIPTION:	1B1 265	
<b>WIRING INSTL-CHASSIS</b>		
SHEET:	ITEM/PART NO:	REV
6 OF 6	000029821 / 31652801000	