

D

D

C

C

B

B

A

A

INLET-30A,125V,EXTERIOR
000037518 / 318581-01-CHT
BRACKET-PLUG
168924-01-CHT
SCREW
000G11-07-12U (4)

RCP-2 (BLU)
GALLEY,REAR

RCP-3 (YEL)
REFRIGERATOR

3 4 ATS ASM
000017748 / 313448-01-000

J-GEN
30
CONNECTOR
093256-01-000

1B1 RECEPTACLE ASM-GFI,US-20A
000120177 / 322738-01-XXX
265 RECEPTACLE ASM-GFI,CAN-20A
000120178 / 322739-01-XXX
(WHT) (HEATER)
PANEL-RCP,GFCI
188004-03-CHT
SCREW
G67-10-10U (2)

RECEPTACLE ASM-GFI,US-15A 1B1
000120175 / 322736-01-XXX
RECEPTACLE ASM-GFI,CAN-15A 265
000120176 / 322737-01-XXX
(BLU) (GALLEY)

RCP-3 (BLK)
MICROWAVE

TO GENERATOR

GROMMET
23942-01-000

- 12D ELECTRICAL SYSTEM 30 AMP
- 265 CODES/STANDARDS-CSA/CMVSS
- 1B1 CODES/STANDARDS USA

1B1 265 12D

4 GROUND WIRES (8 GA WIRE) FROM LOAD CENTER AND
ATS ROUTES THROUGH FLOOR TO GROUND BOLT UNDER
DRIVER'S SEAT.

3 LOAD CENTER AND ATS GROUND WIRES MUST BE
ATTACHED DIRECTLY TO CHASSIS GROUND.

2. ALL 110V WIRES TO BE CLAMPED WITH CLAMP 10497-05-000
WITHIN 200MM OF OUTLET BOXES, USE SCREW G67-10-12B.

1. AT MINIMUM ALL WIRES TO BE SUPPORTED AND SECURED PER
CODE REQUIREMENTS. USE CLAMP 10495 OR 10497 OR WIRE
TIE 8343 OR 108046 AND SCREW G67-XX-XXX OR G56-XX-XXX
AS APPROPRIATE FOR INSTALLATION.

NOTES:

FOR ELECTRICAL
TORQUE
SPECIFICATIONS
SEE DWG NO.
128783-01-000

FOR
ELECTRICAL
CALLOUTS
SEE DWG NO.
121339-01-000



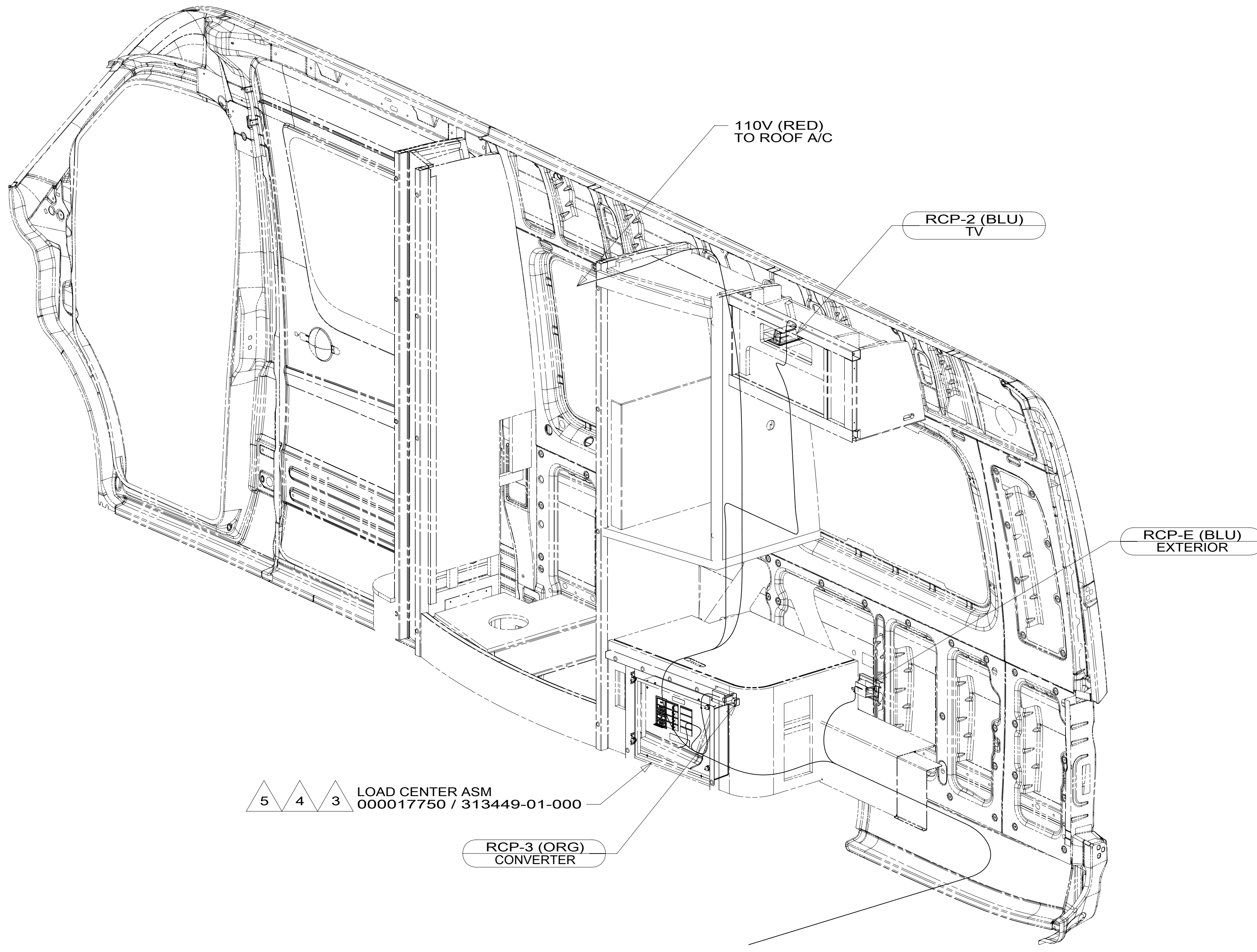
DSNR:	ALL DIMENSIONS ARE IN MILLIMETERS	
DFFR:	MATERIAL:	
UNSPECIFIED TOLERANCES:		
WHOLE DIM (X)	: 3	
ONE-PLACE (X.X)	: 1.5	
TWO-PLACE (X.XX)	: 0.50	
ANGLE	: 1°	
REFER TO ES0018 FOR FASTENER TIGHTENING GUIDELINES	WEIGHT: (LBS)	FIRST USED: 17 170X

DESCRIPTION:
WIRING INSTL-BODY,110V

SHEET: 1 OF 4 ITEM/PART NO: 000028026 / 31617001000 REF: 1 31-May-2017

8 7 6 5 4 3 2 1

D
C
B
A



- 5 LOAD CENTER AND ATS GROUND WIRES MUST BE ATTACHED DIRECTLY TO CHASSIS GROUND.
- 4 GROUND WIRES (8 GA WIRE) FROM LOAD CENTER AND ATS ROUTES THROUGH FLOOR TO GROUND BOLT UNDER DRIVER'S SEAT.
- 3 SEE SHEET 4 FOR ADDITIONAL INFORMATION.
2. ALL 110V WIRES TO BE CLAMPED WITH CLAMP 10497-05-000 WITHIN 200MM OF OUTLET BOXES, USE SCREW G67-10-12B.
1. AT MINIMUM ALL WIRES TO BE SUPPORTED AND SECURED PER CODE REQUIREMENTS. USE CLAMP 10495 OR 10497 OR WIRE TIE 8343 OR 108046 AND SCREW G67-XX-XXX OR G56-XX-XXX AS APPROPRIATE FOR INSTALLATION.

NOTES:

5 4 3 LOAD CENTER ASM
000017750 / 313449-01-000

RCP-3 (ORG)
CONVERTER

110V (RED)
TO ROOF A/C

RCP-2 (BLU)
TV

RCP-E (BLU)
EXTERIOR

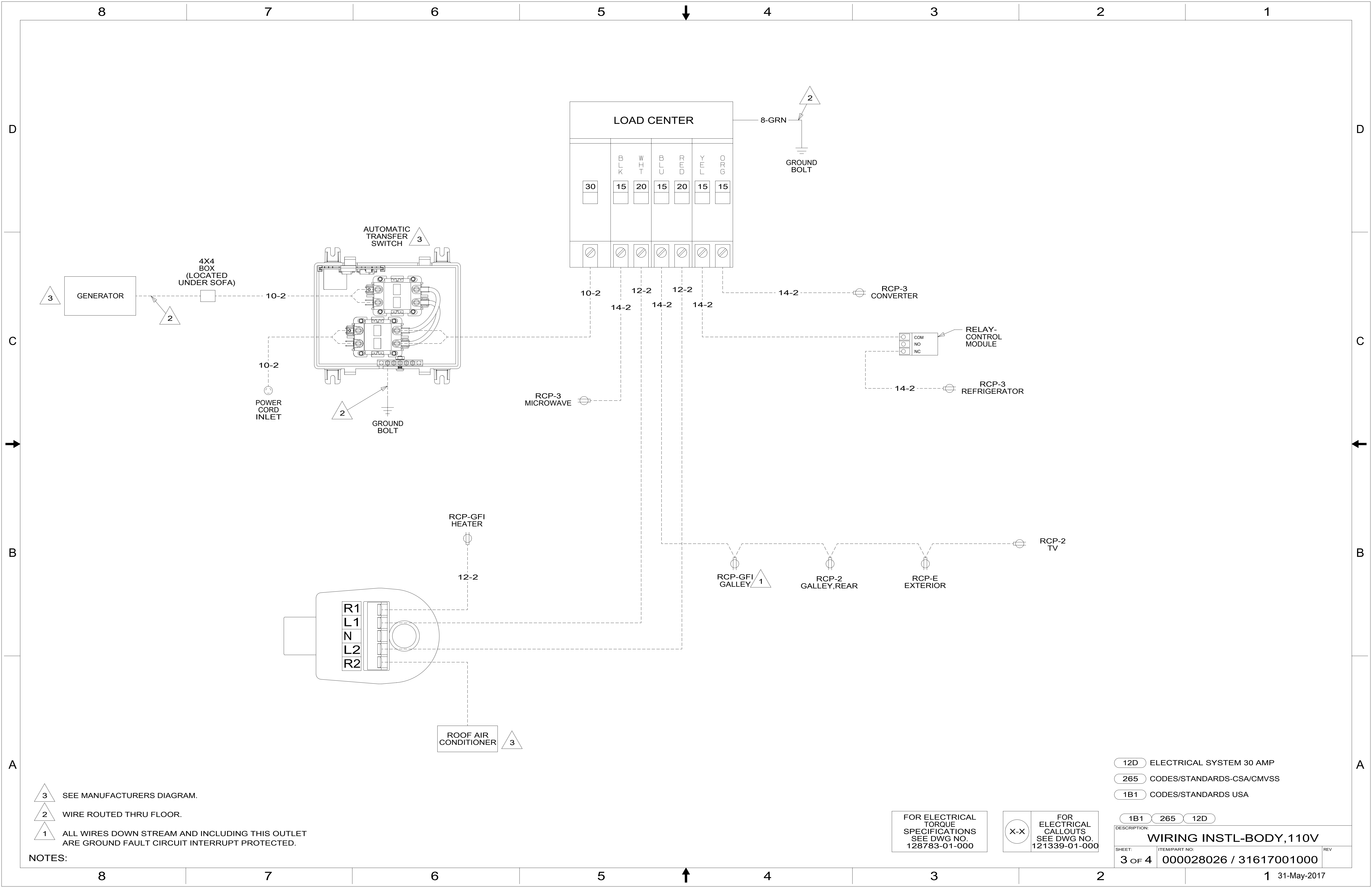
FOR ELECTRICAL
TORQUE
SPECIFICATIONS
SEE DWG NO.
128783-01-000

FOR
ELECTRICAL
CALLOUTS
SEE DWG NO.
121339-01-000

- 12D ELECTRICAL SYSTEM 30 AMP
- 265 CODES/STANDARDS-CSA/CMVSS
- 1B1 CODES/STANDARDS USA

DESCRIPTION:	1B1 265 12D	
WIRING INSTL-BODY, 110V		
SHEET:	ITEM/PART NO:	REV
2 OF 4	000028026 / 31617001000	

8 7 6 5 4 3 2 1 31-May-2017



- NOTES:
- 3 SEE MANUFACTURERS DIAGRAM.
 - 2 WIRE ROUTED THRU FLOOR.
 - 1 ALL WIRES DOWN STREAM AND INCLUDING THIS OUTLET ARE GROUND FAULT CIRCUIT INTERRUPT PROTECTED.

FOR ELECTRICAL TORQUE SPECIFICATIONS SEE DWG NO. 128783-01-000

FOR ELECTRICAL CALLOUTS SEE DWG NO. 121339-01-000

- 12D ELECTRICAL SYSTEM 30 AMP
- 265 CODES/STANDARDS-CSA/CMVSS
- 1B1 CODES/STANDARDS USA

DESCRIPTION: WIRING INSTL-BODY, 110V		
SHEET: 3 OF 4	ITEM/PART NO: 000028026 / 31617001000	REV

RED	1B1	136135-07-045
	265	136136-07-045
ORG	1B1	136131-16-015
	265	136134-16-015
BLK	1B1	136131-06-065
	265	136134-06-065
BLU	1B1	136131-02-215
	265	136134-02-215
WHT	1B1	136135-09-045
	265	136136-09-045
YEL	1B1	136131-05-085
	265	136134-05-085
MAIN	1B1	136137-01-060
	265	136138-01-060
GROUND MAIN		136145-05-075
MAIN EXTENSION	1B1	136137-01-025
	265	136138-01-025
CORD-POWER ASM		183140-01-000
GROUND ATS		136145-05-066
GENERATOR EXTENSION	1B1	136137-01-020
	265	136138-01-020

4

5

4

- 5 DO NOT HI-POT POWER CORD, LED INDICATOR LIGHT MAY FAIL.
- 4 GROUND WIRES TO BE INSTALLED ON MFG LINE. SHIP GROUND WIRES LOOSE WITH LOAD CENTER.
3. SEE WIRING INSTL-BODY, 12V FOR ADDITIONAL INFORMATION.
2. SECURE WIRES TO BACKSIDE OF LOAD CENTER WITH WIRE TIE 116673-01-000.
1. ALL GROUNDS WIRES TO BE COVERED WITH TUBING 8041-02-000.

NOTES:

- 12D ELECTRICAL SYSTEM 30 AMP
- 265 CODES/STANDARDS-CSA/CMVSS
- 1B1 CODES/STANDARDS USA

FOR ELECTRICAL TORQUE SPECIFICATIONS SEE DWG NO. 128783-01-000

FOR ELECTRICAL CALLOUTS SEE DWG NO. 121339-01-000

1B1	265	12D
DESCRIPTION: WIRING INSTL-BODY, 110V		
SHEET: 4 OF 4	ITEM/PART NO: 000028026 / 31617001000	REV