

8 7 6 5 4 3 2 1

D

C

B

A

8

7

6

5

4

3

2

1

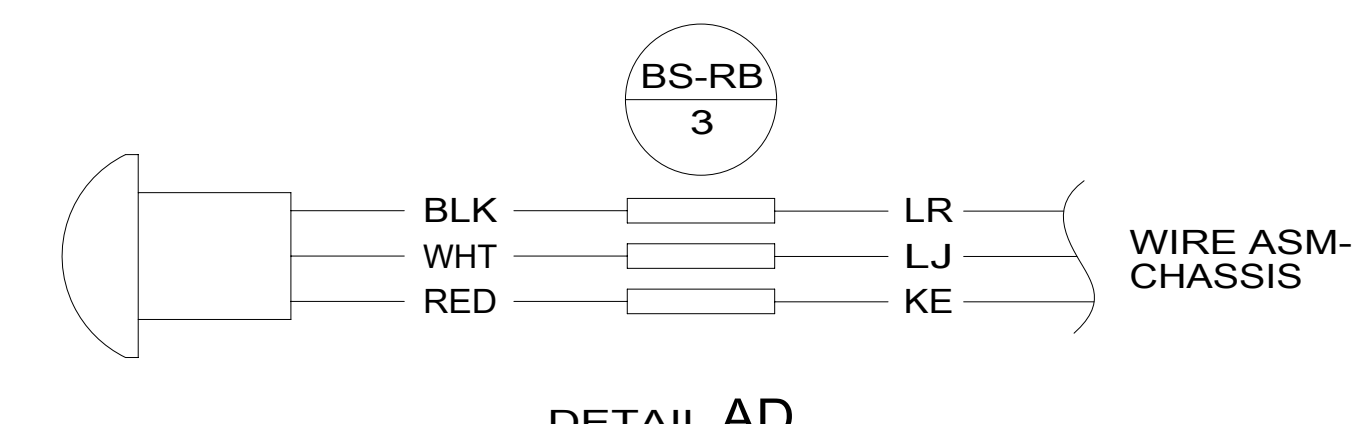
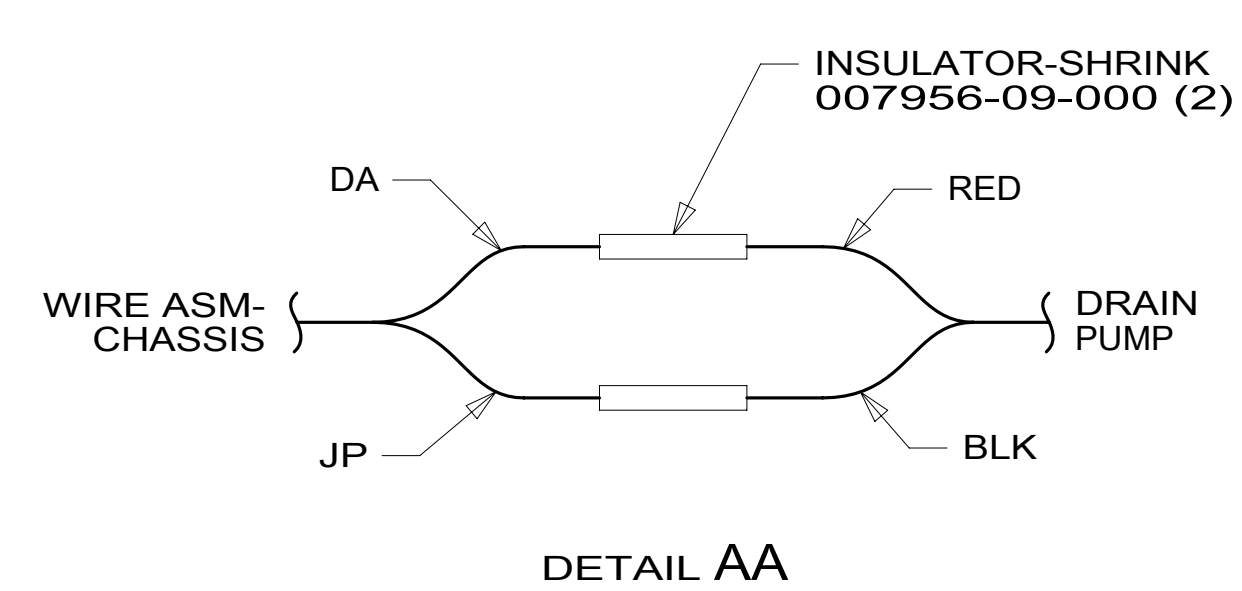
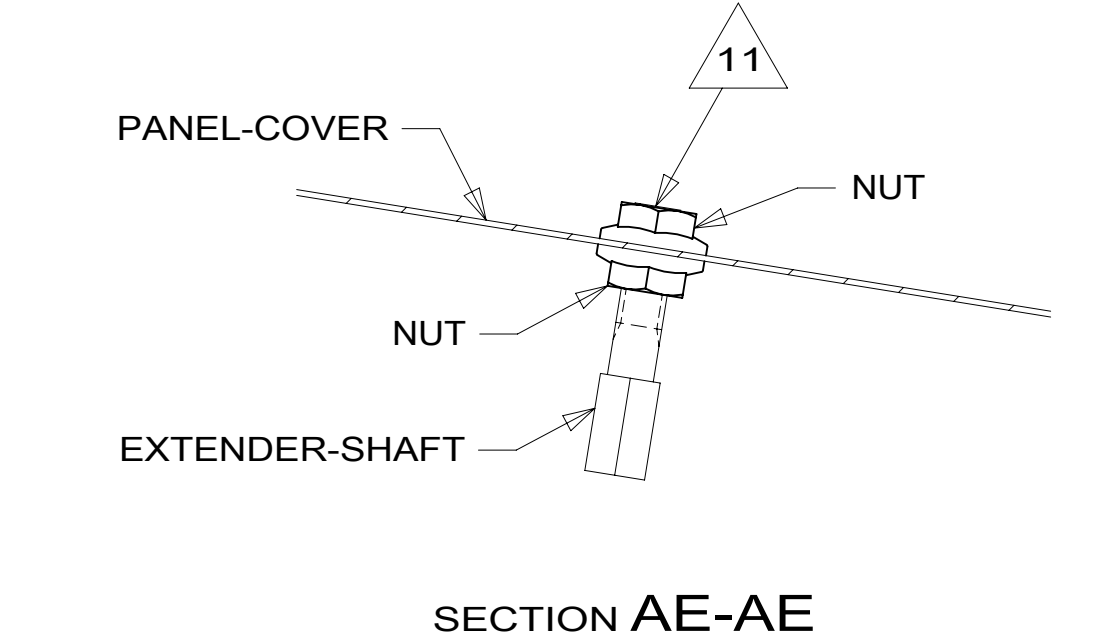
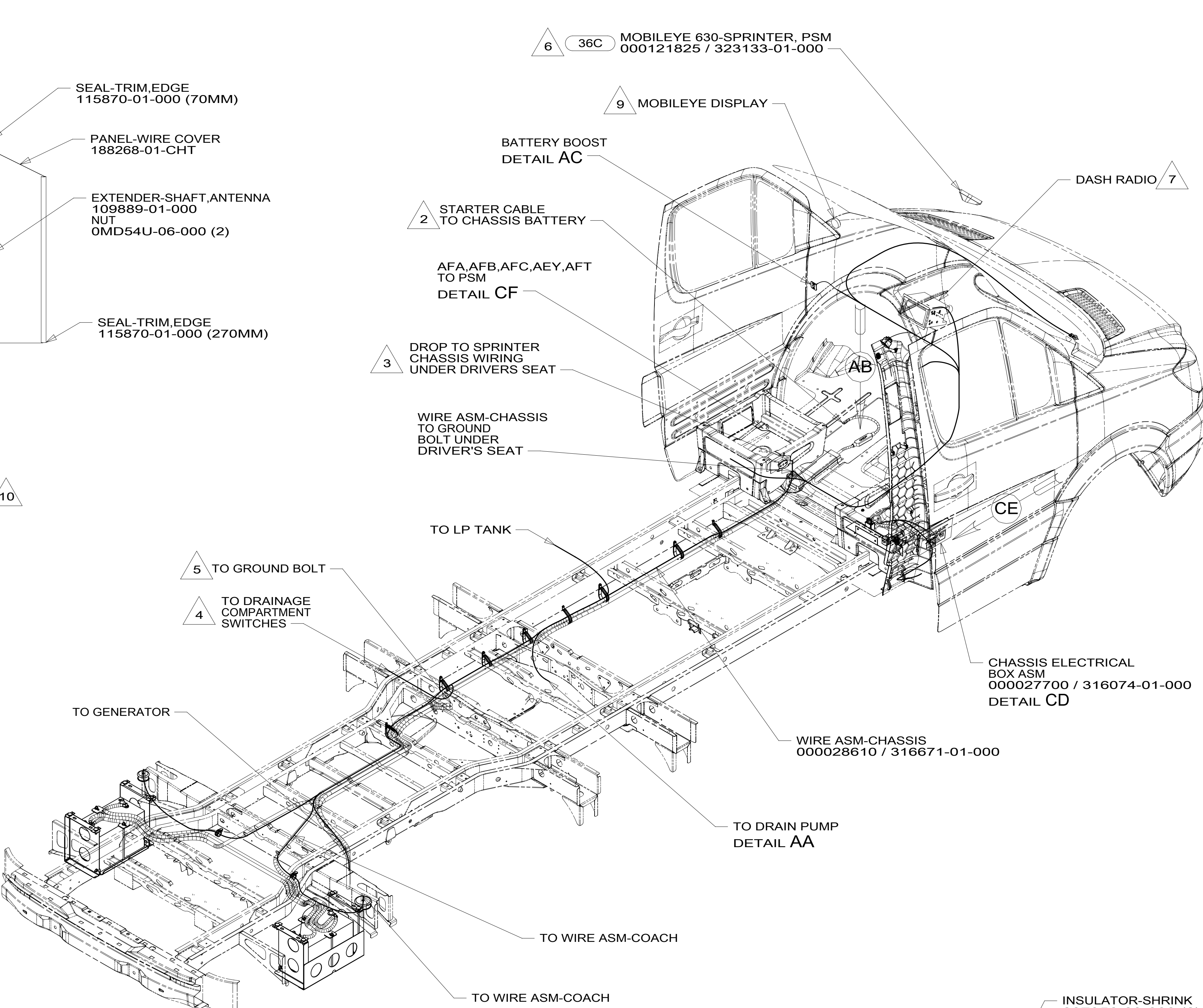
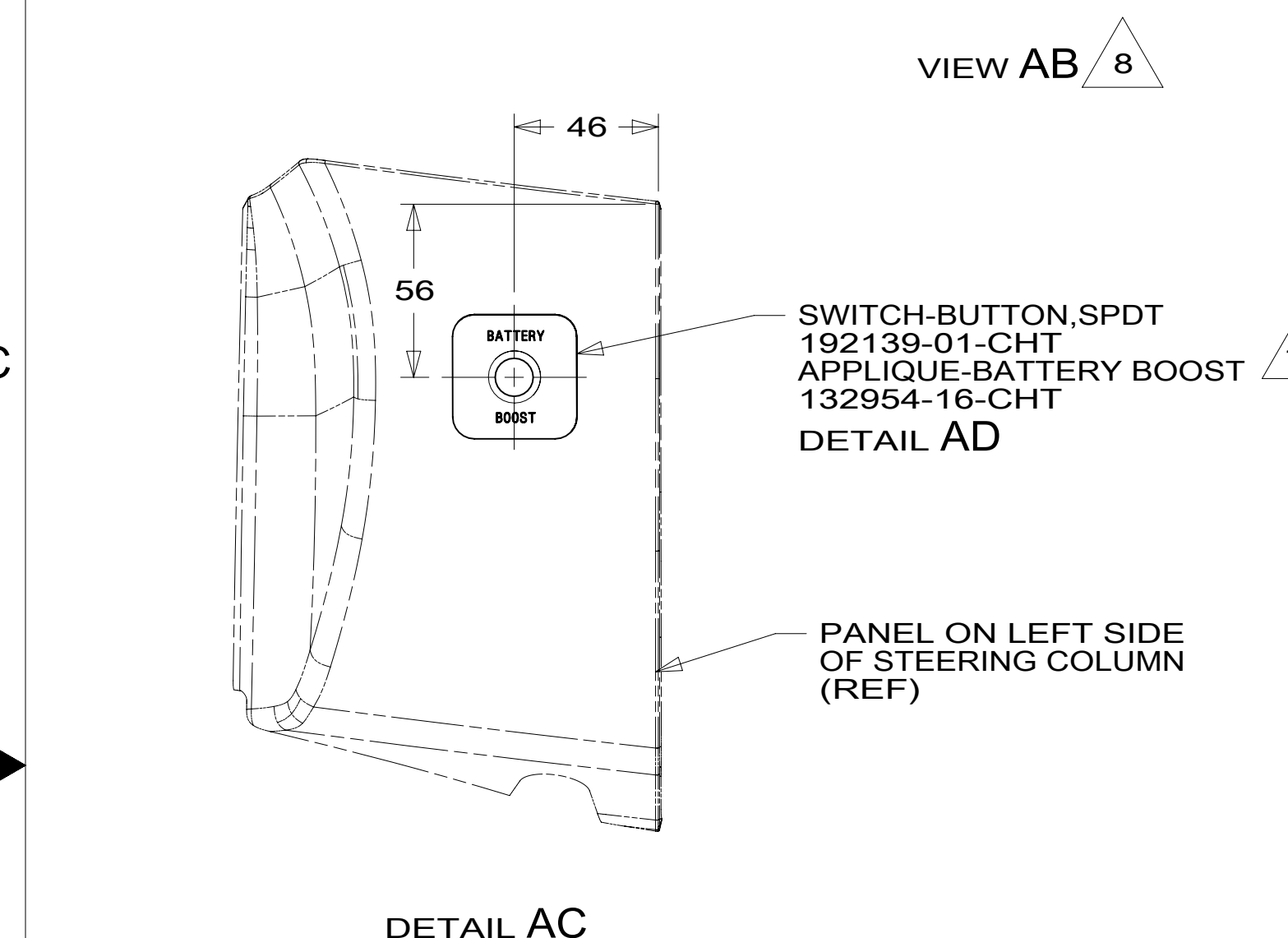
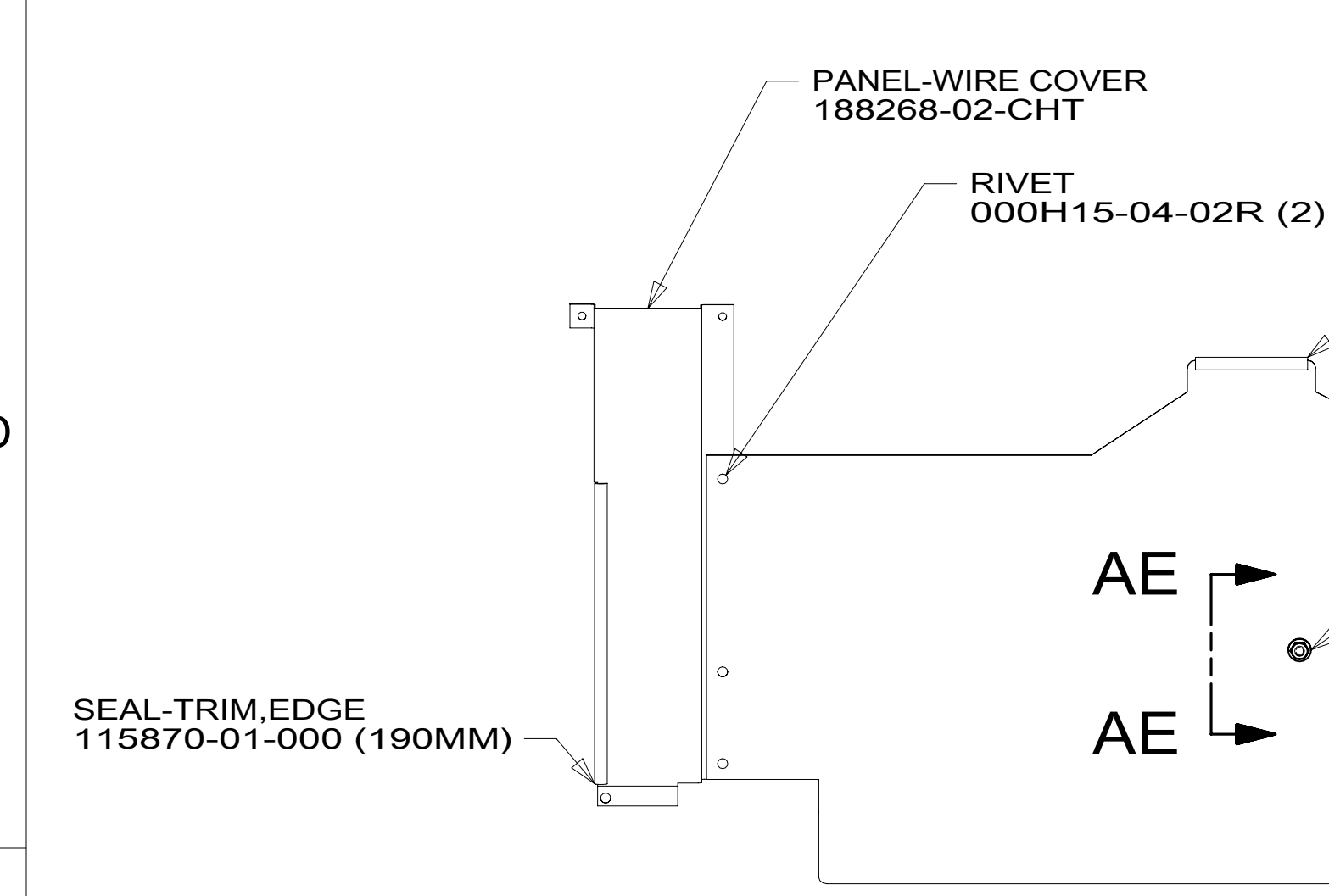
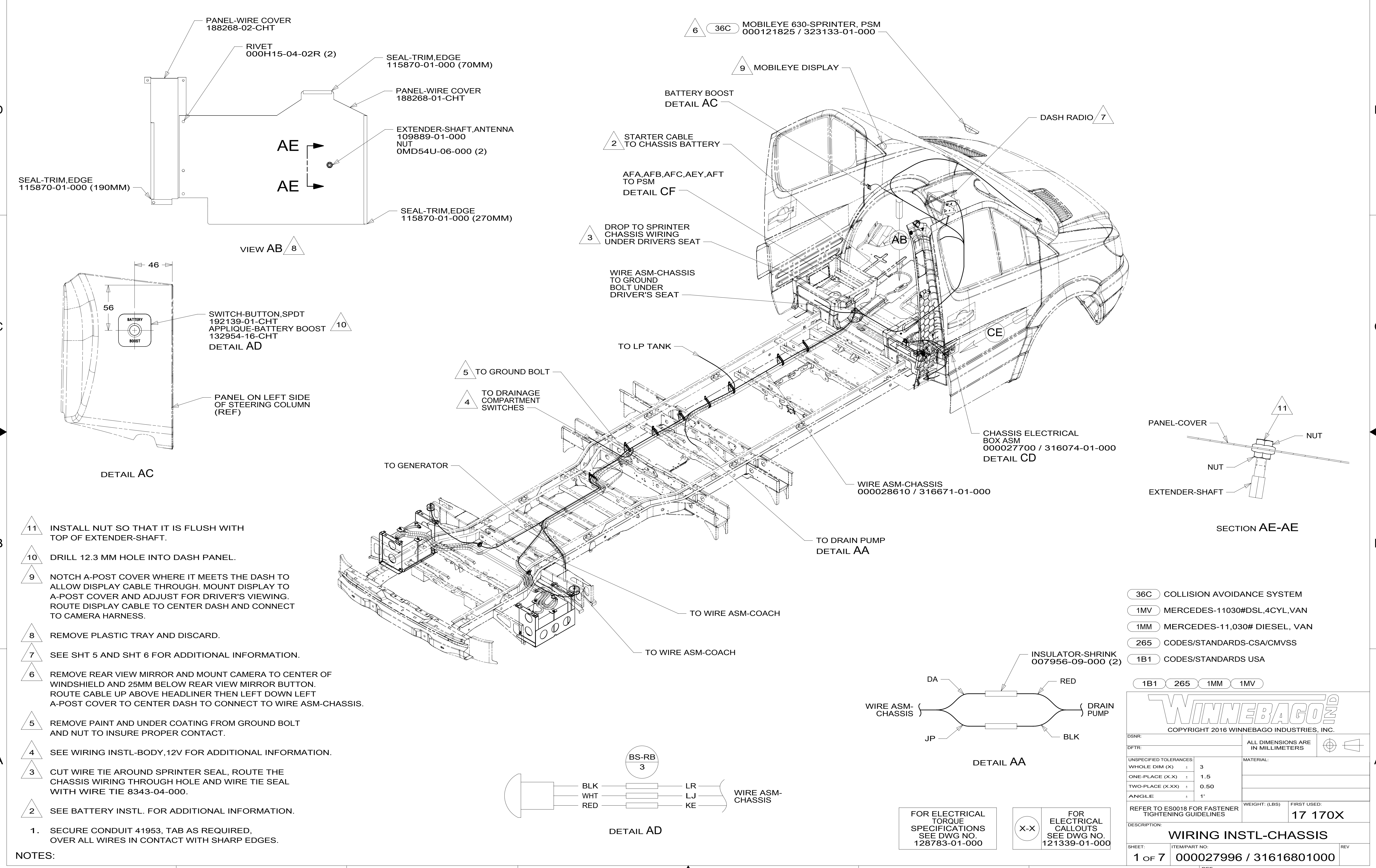
D

C

B

A

1



- 11 INSTALL NUT SO THAT IT IS FLUSH WITH TOP OF EXTENDER-SHAFT.
 - 10 DRILL 12.3 MM HOLE INTO DASH PANEL.
 - 9 NOTCH A-POST COVER WHERE IT MEETS THE DASH TO ALLOW DISPLAY CABLE THROUGH. MOUNT DISPLAY TO A-POST COVER AND ADJUST FOR DRIVER'S VIEWING. ROUTE DISPLAY CABLE TO CENTER DASH AND CONNECT TO CAMERA HARNESS.
 - 8 REMOVE PLASTIC TRAY AND DISCARD.
 - 7 SEE SHT 5 AND SHT 6 FOR ADDITIONAL INFORMATION.
 - 6 REMOVE REAR VIEW MIRROR AND MOUNT CAMERA TO CENTER OF WINDSHIELD AND 25MM BELOW REAR VIEW MIRROR BUTTON. ROUTE CABLE UP ABOVE HEADLINER THEN LEFT DOWN LEFT A-POST COVER TO CENTER DASH TO CONNECT TO WIRE ASM-CHASSIS.
 - 5 REMOVE PAINT AND UNDER COATING FROM GROUND BOLT AND NUT TO INSURE PROPER CONTACT.
 - 4 SEE WIRING INSTL-BODY, 12V FOR ADDITIONAL INFORMATION.
 - 3 CUT WIRE TIE AROUND SPRINTER SEAL, ROUTE THE CHASSIS WIRING THROUGH HOLE AND WIRE TIE SEAL WITH WIRE TIE 8343-04-000.
 - 2 SEE BATTERY INSTL. FOR ADDITIONAL INFORMATION.
- NOTES:
1. SECURE CONDUIT 41953, TAB AS REQUIRED, OVER ALL WIRES IN CONTACT WITH SHARP EDGES.

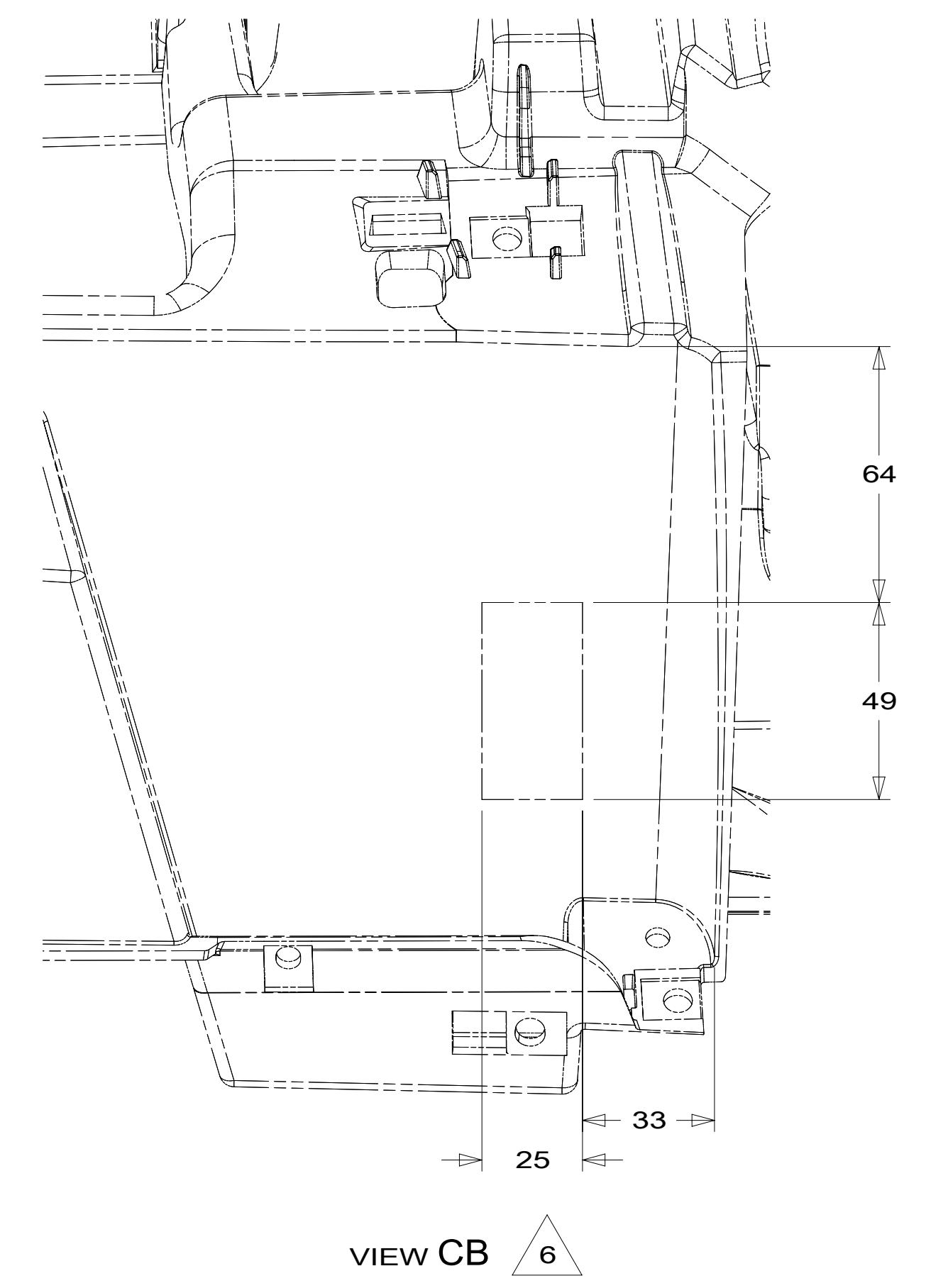
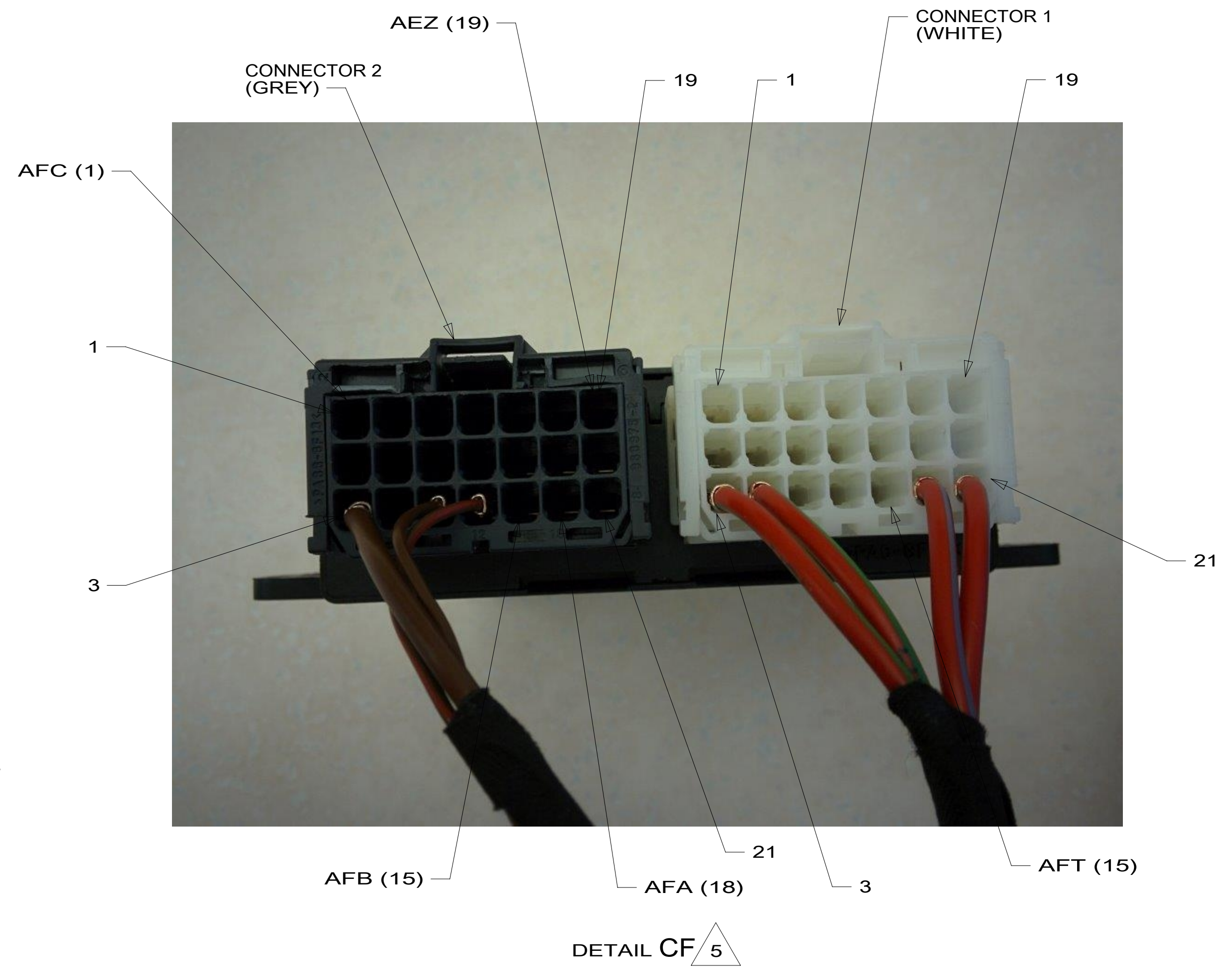
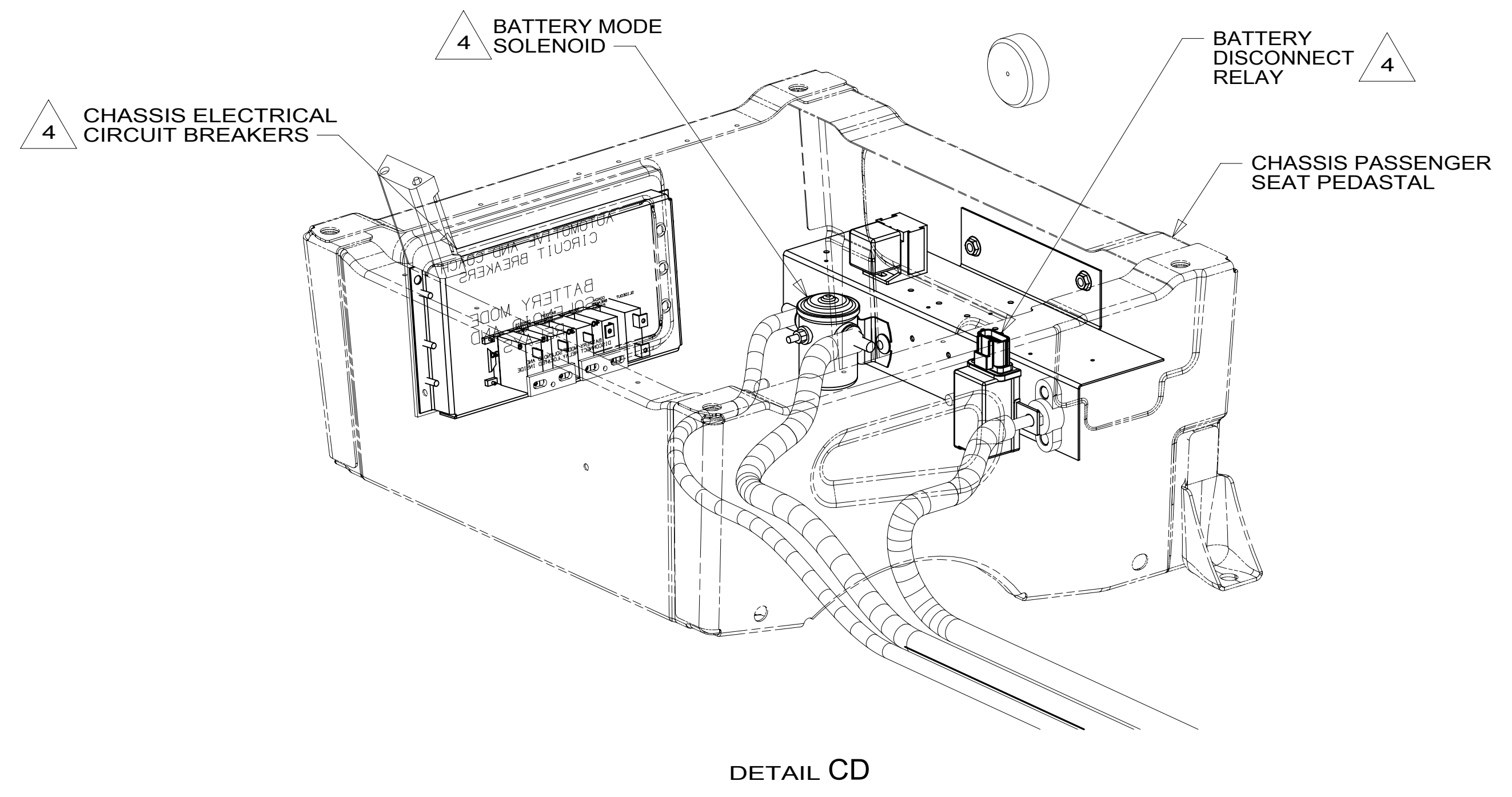
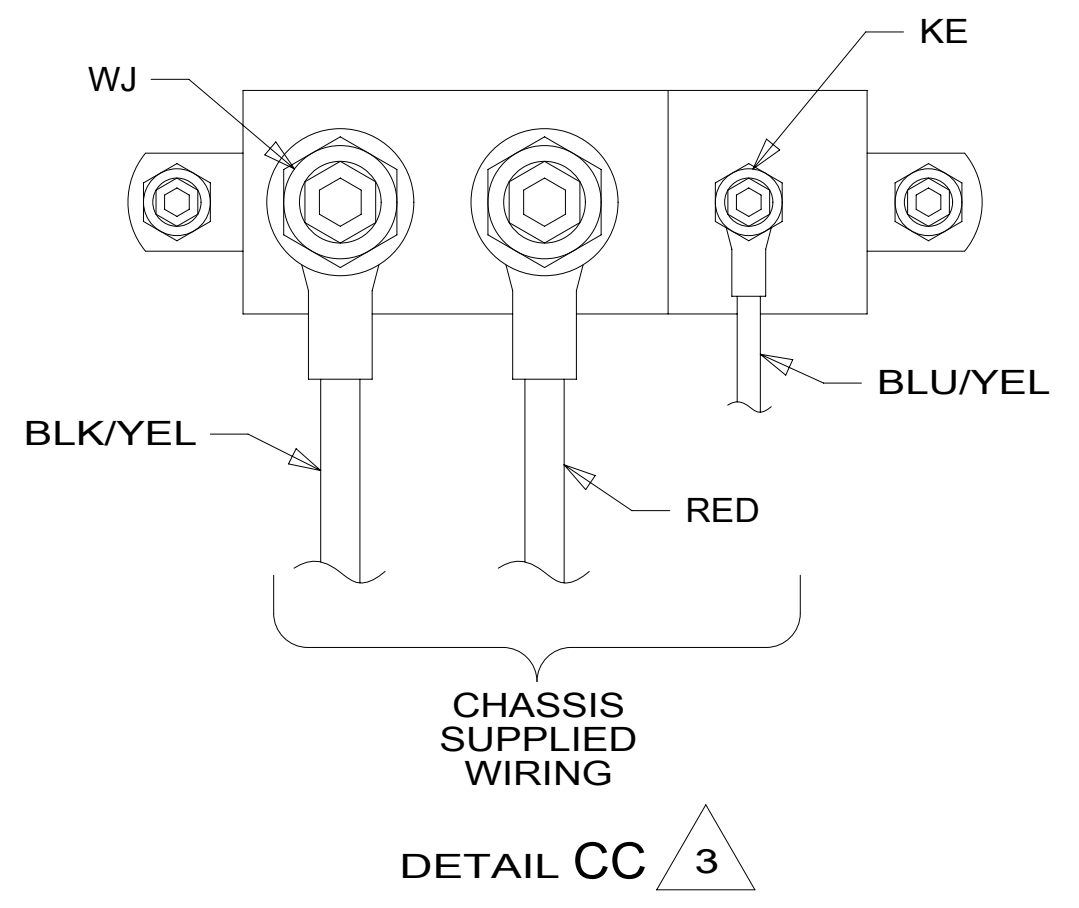
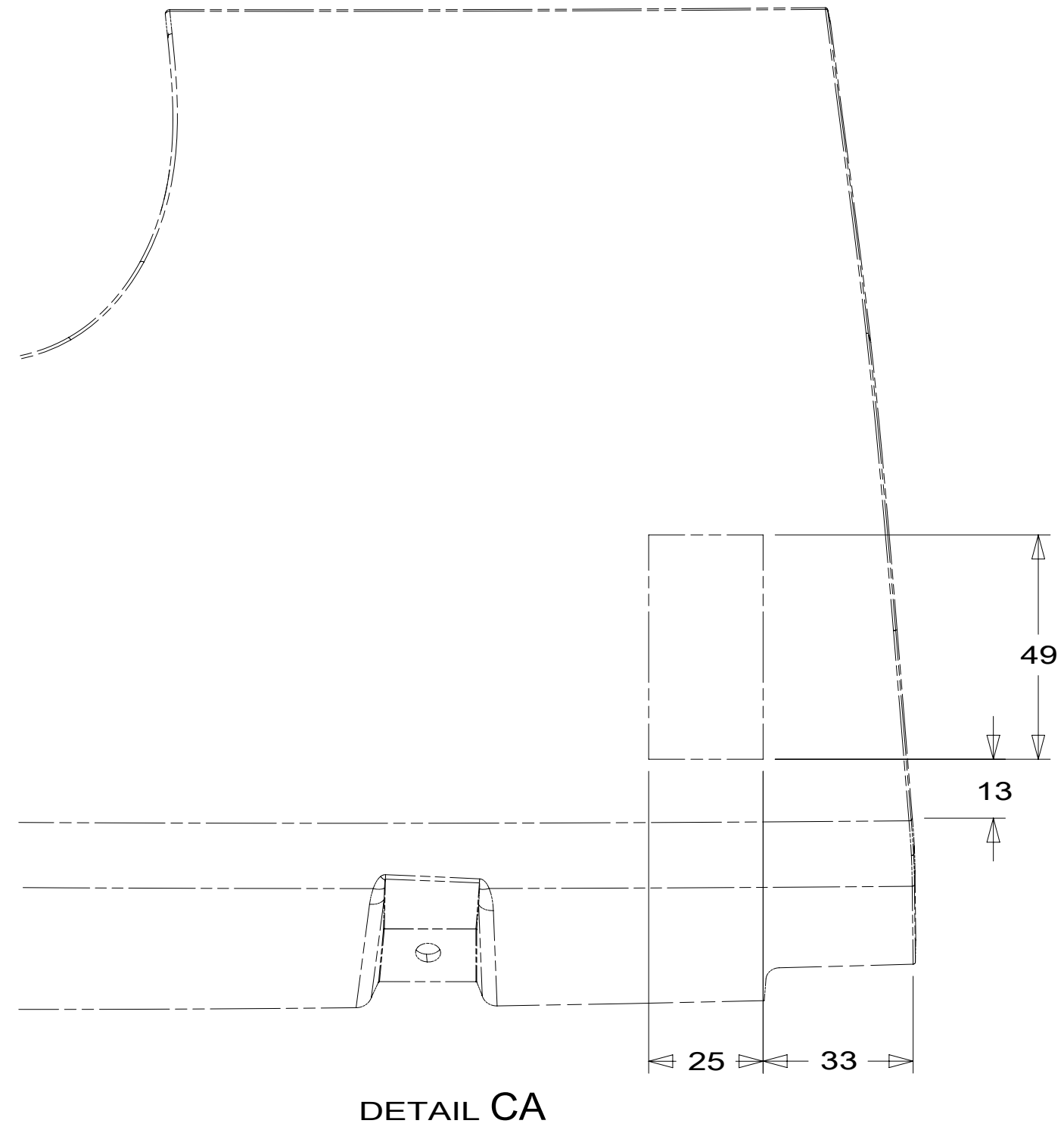
- 36C COLLISION AVOIDANCE SYSTEM
- 1MV MERCEDES-11030#DSL,4CYL,VAN
- 1MM MERCEDES-11,030# DIESEL, VAN
- 265 CODES/STANDARDS-CSA/CMVSS
- 1B1 CODES/STANDARDS USA

WINNEBAGO COPYRIGHT 2016 WINNEBAGO INDUSTRIES, INC.	
DSNR:	ALL DIMENSIONS ARE IN MILLIMETERS
DIFTR:	MATERIAL:
UNSPECIFIED TOLERANCES:	WEIGHT: (LBS)
WHOLE DIM (X) : 3	FIRST USED:
ONE-PLACE (X.X) : 1.5	17 170X
TWO-PLACE (X.XX) : 0.50	
ANGLE : 1°	
REFER TO ES0018 FOR FASTENER TIGHTENING GUIDELINES	
WIRING INSTL-CHASSIS	
SHEET: 1 OF 7	ITEM/PART NO: 000027996 / 31616801000
REF:	REV:

FOR ELECTRICAL TORQUE SPECIFICATIONS SEE DWG NO. 128783-01-000

FOR ELECTRICAL CALLOUTS SEE DWG NO. 121339-01-000

8 7 6 5 4 3 2 1



- 6 DASH STRUCTURE LOCATED BEHIND LOWER DASH PANEL.
- 5 LOCATED UNDER DRIVER'S SEAT.
- 4 SEE CHASSIS ELECTRICAL BOX ASM FOR ADDITIONAL INFORMATION.
- 3 CONNECTION POINT IS LOCATED UNDER DRIVERS SEAT.
- 2 LOWER DASH PANEL.

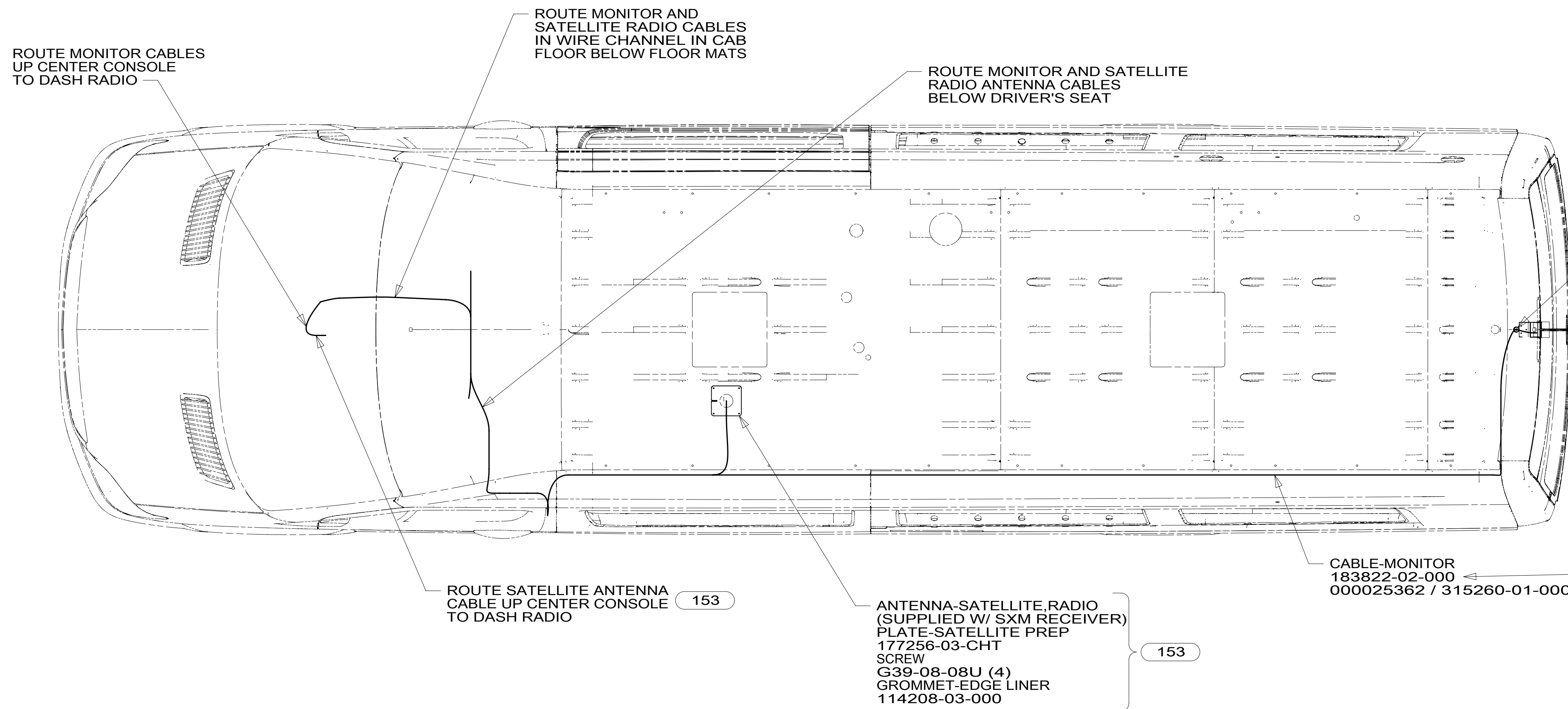
NOTES:
1. SECURE CONDUIT 41953, TAB AS REQUIRED, OVER ALL WIRES IN CONTACT WITH SHARP EDGES.

FOR ELECTRICAL TORQUE SPECIFICATIONS SEE DWG NO. 128783-01-000

FOR ELECTRICAL CALLOUTS SEE DWG NO. 121339-01-000

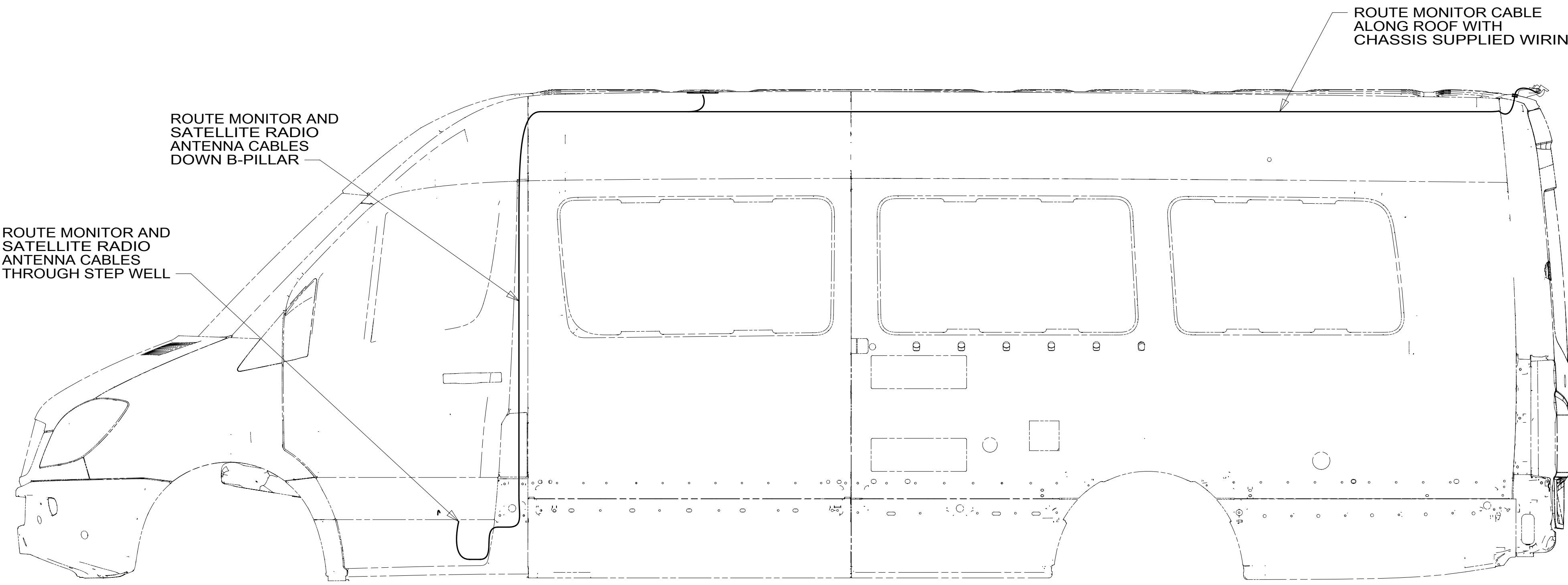
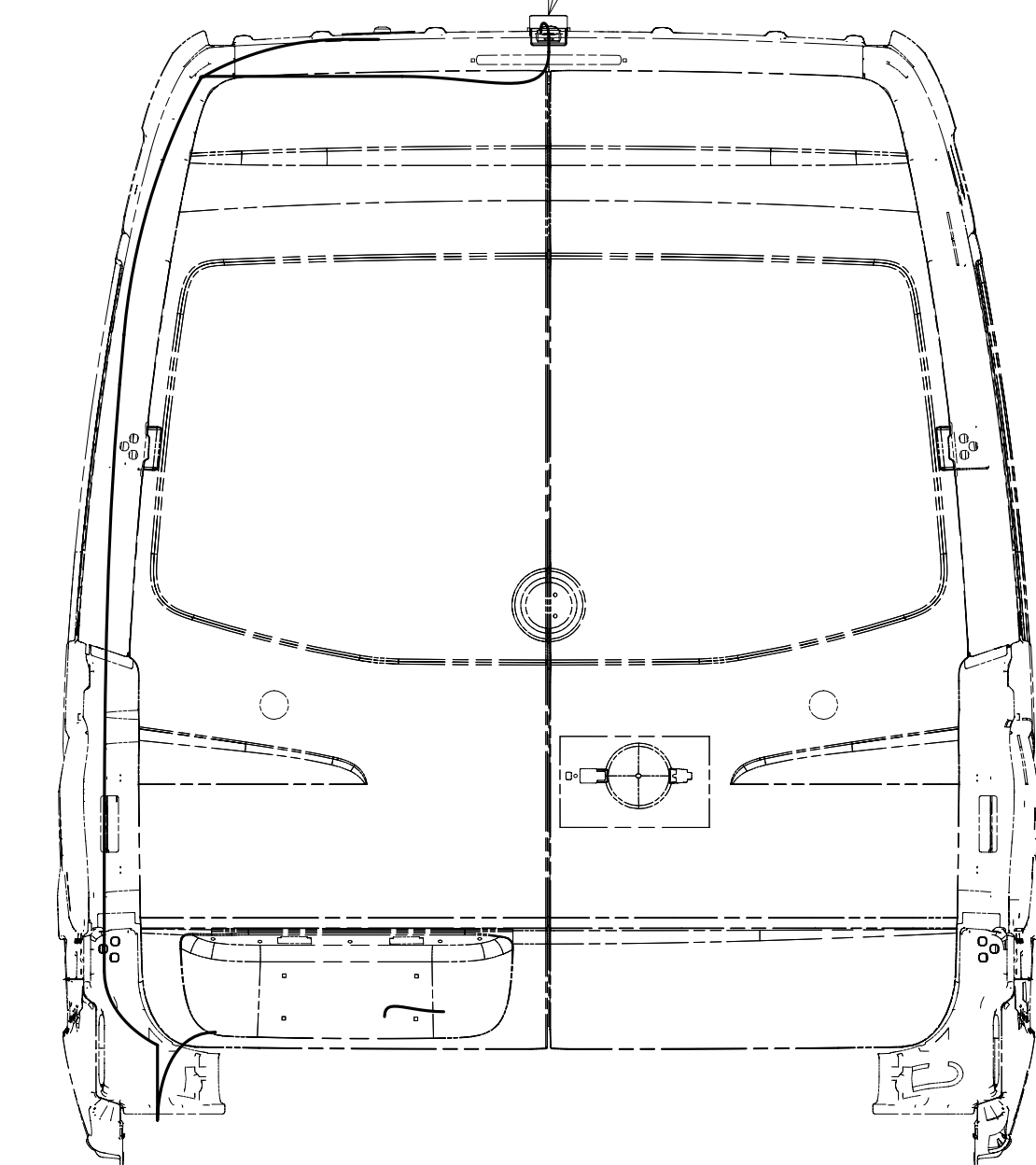
- 1MV MERCEDES-11030#DSL,4CYL,VAN
- 1MM MERCEDES-11,030# DIESEL, VAN
- 265 CODES/STANDARDS-CSA/CMVSS
- 1B1 CODES/STANDARDS USA

DESCRIPTION: WIRING INSTL-CHASSIS		
SHEET: 3 OF 7	ITEM/PART NO: 000027996 / 31616801000	REV



GROMMET
71015-44-000
SEAL

CAMERA-REAR
183822-01-000
BRACKET
179275-02-CHT
RIVET
163664-01-CHT (3)
CAMERA-REAR
000025360 / 315258-01-000
SCREW
000G39-08-12U (4)

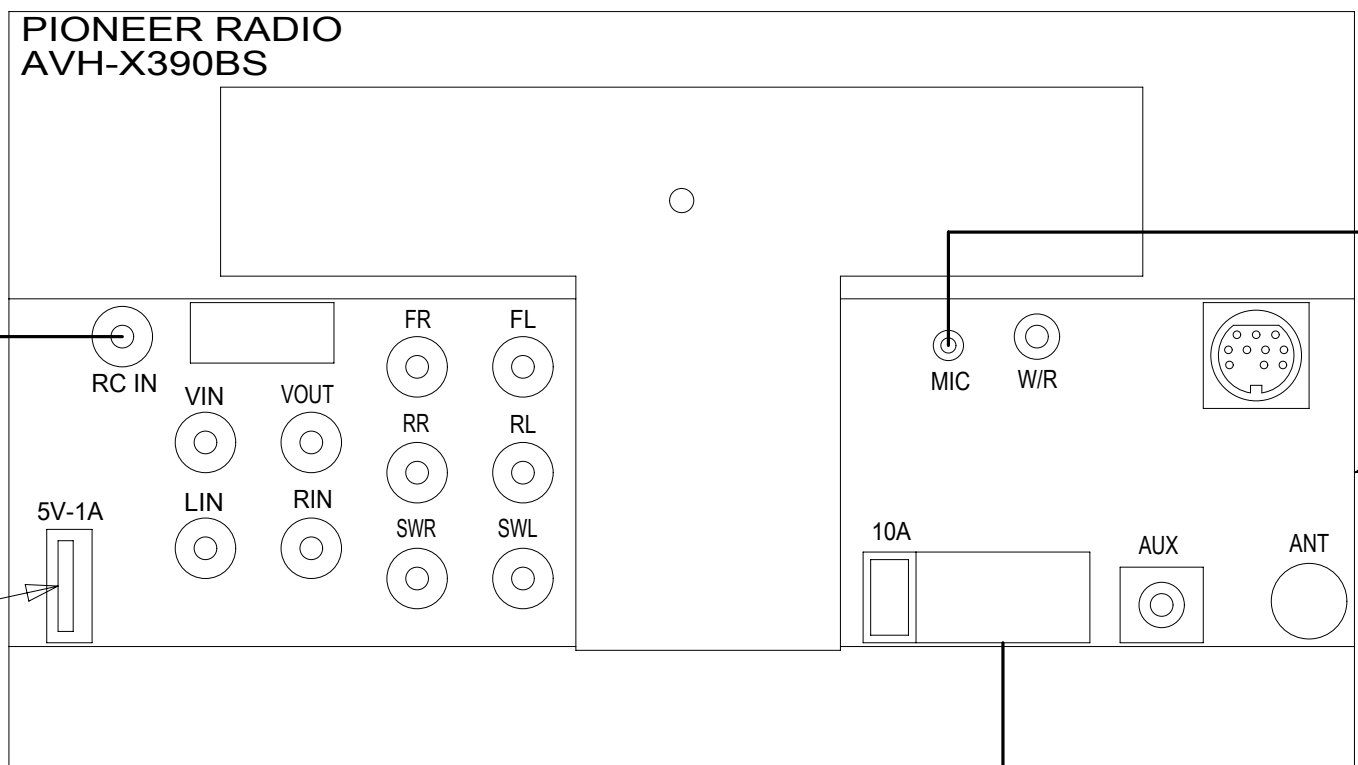
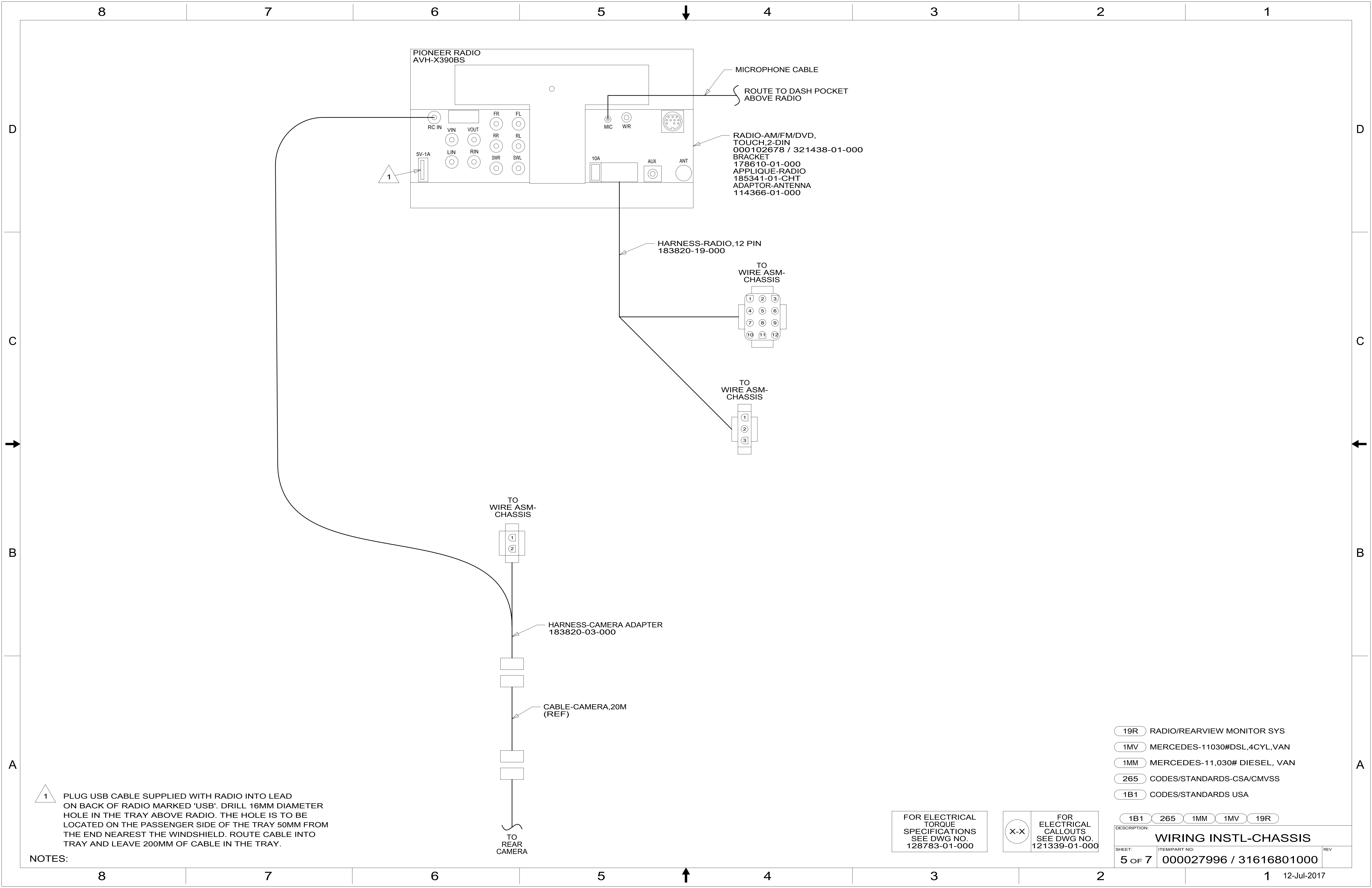


- 153 LG SCREEN-INFO/GPS SIRIUSXM
- 19R RADIO/REARVIEW MONITOR SYS
- 1MV MERCEDES-11030#DSL,4CYL,VAN
- 1MM MERCEDES-11,030# DIESEL, VAN
- 265 CODES/STANDARDS-CSA/CMVSS
- 1B1 CODES/STANDARDS USA

FOR ELECTRICAL
TORQUE
SPECIFICATIONS
SEE DWG NO.
128783-01-000

FOR
ELECTRICAL
CALLOUTS
SEE DWG NO.
121339-01-000

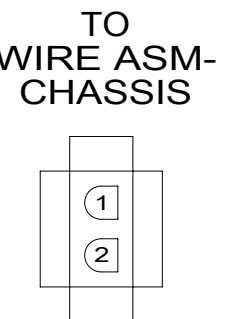
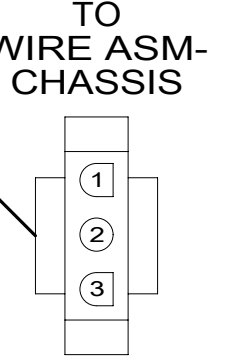
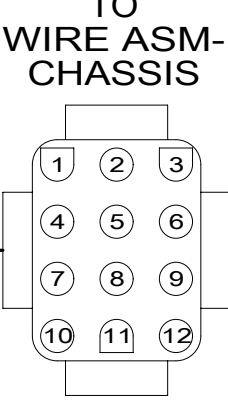
DESCRIPTION:	1B1 265 1MM 1MV	
WIRING INSTL-CHASSIS		
SHEET:	ITEM/PART NO:	REV
4 OF 7	000027996 / 31616801000	



MICROPHONE CABLE
 ROUTE TO DASH POCKET ABOVE RADIO

RADIO-AM/FM/DVD, TOUCH, 2-DIN
 000102678 / 321438-01-000
 BRACKET
 178610-01-000
 APPLIQUE-RADIO
 185341-01-CHT
 ADAPTOR-ANTENNA
 114366-01-000

HARNESS-RADIO, 12 PIN
 183820-19-000



HARNESS-CAMERA ADAPTER
 183820-03-000

CABLE-CAMERA, 20M (REF)

TO REAR CAMERA

1 PLUG USB CABLE SUPPLIED WITH RADIO INTO LEAD ON BACK OF RADIO MARKED 'USB'. DRILL 16MM DIAMETER HOLE IN THE TRAY ABOVE RADIO. THE HOLE IS TO BE LOCATED ON THE PASSENGER SIDE OF THE TRAY 50MM FROM THE END NEAREST THE WINDSHIELD. ROUTE CABLE INTO TRAY AND LEAVE 200MM OF CABLE IN THE TRAY.

NOTES:

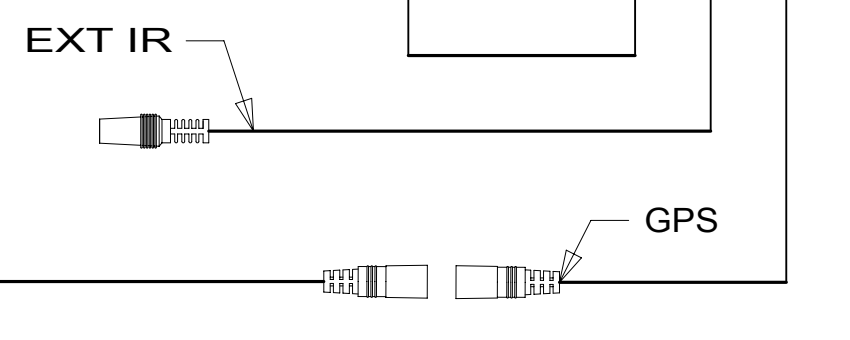
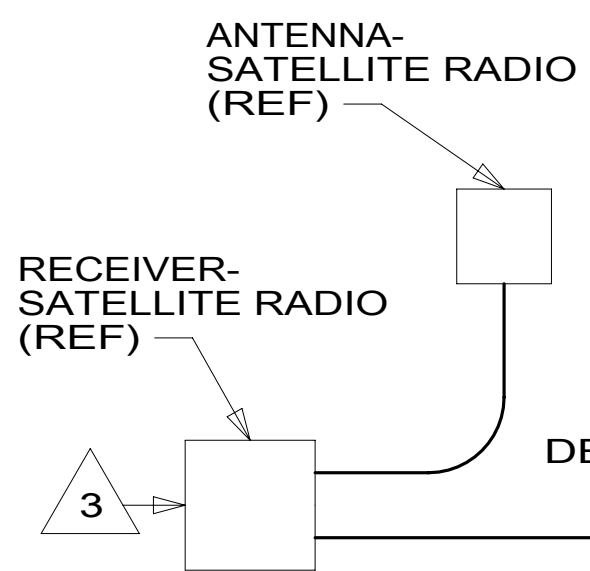
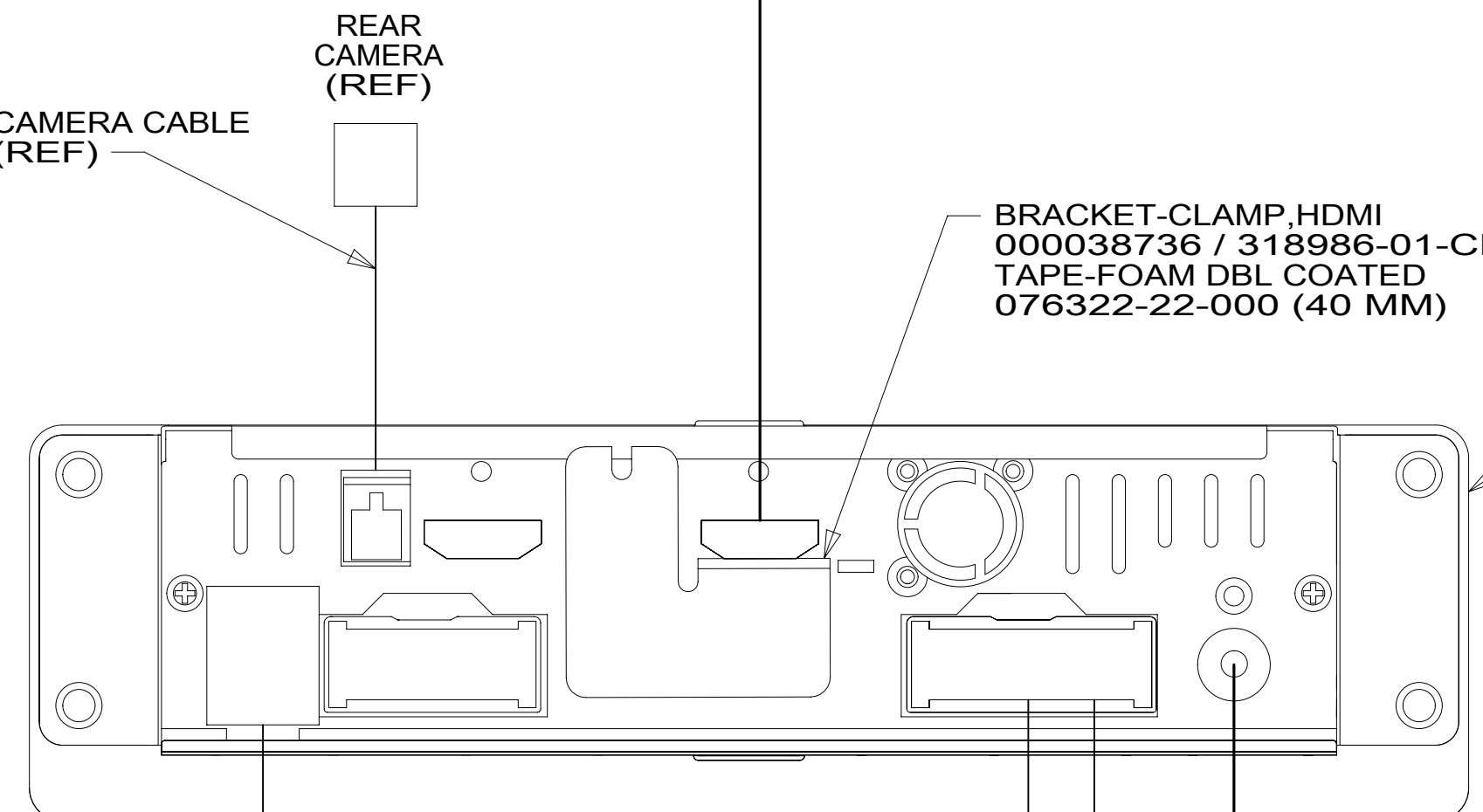
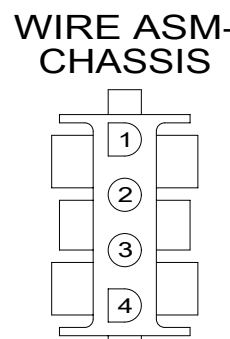
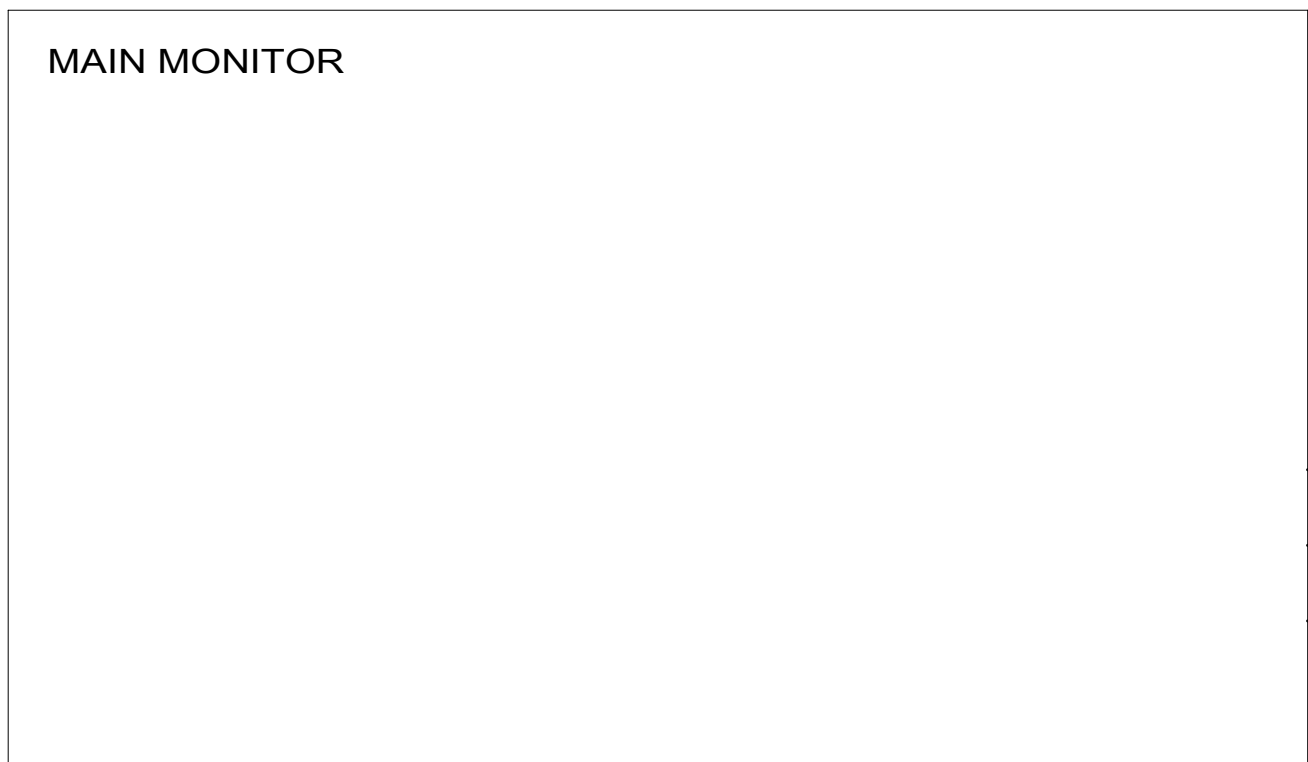
FOR ELECTRICAL TORQUE SPECIFICATIONS SEE DWG NO. 128783-01-000

FOR ELECTRICAL CALLOUTS SEE DWG NO. 121339-01-000

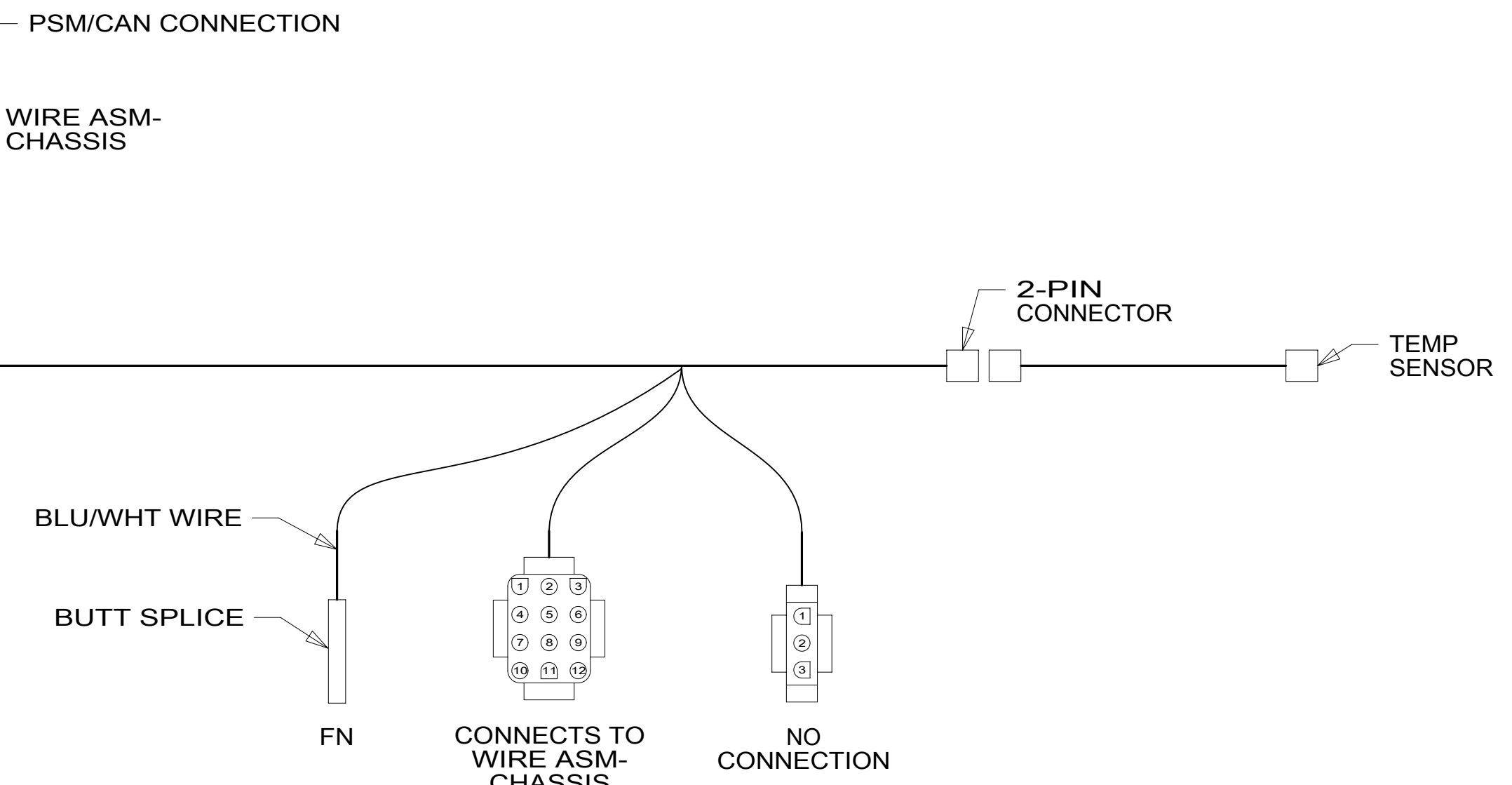
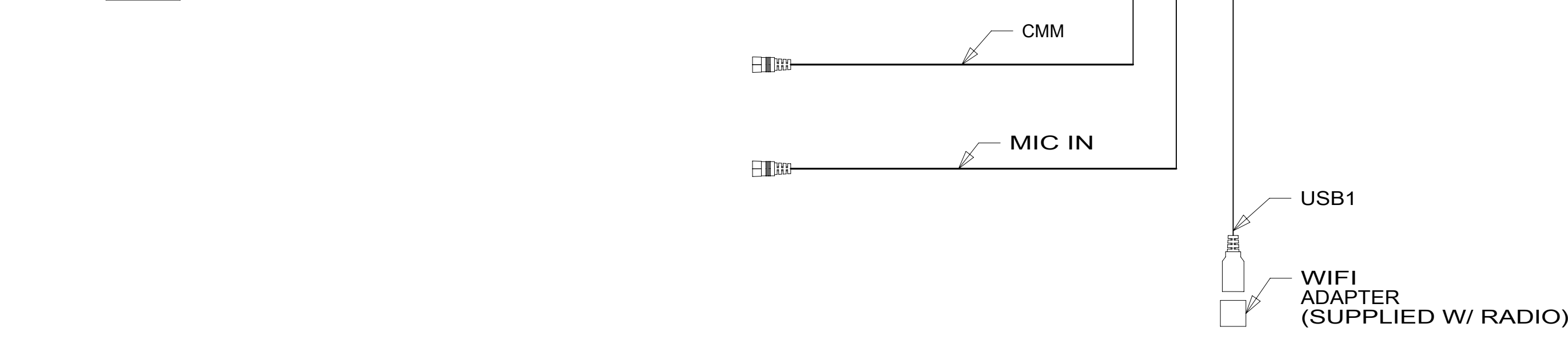
- 19R RADIO/REARVIEW MONITOR SYS
- 1MV MERCEDES-11030#DSL,4CYL,VAN
- 1MM MERCEDES-11,030# DIESEL, VAN
- 265 CODES/STANDARDS-CSA/CMVSS
- 1B1 CODES/STANDARDS USA

1B1 265 1MM 1MV 19R

DESCRIPTION: WIRING INSTL-CHASSIS		
SHEET: 5 OF 7	ITEM/PART NO: 000027996 / 31616801000	REV



- RADIO-INFOENTAINMENT, 9" 000025353 / 315254-01-000
- REMOTE 176654-04-000
- RECEIVER-SAT RADIO 000111632 / 321635-01-000
- TEMP SENSOR 176654-13-000
- ADAPTOR-ANTENNA 114366-01-000



- 4 MOUNT GPS ANTENNA TO TOP OF DEFROST PLENUM BEHIND RADIO.
- 3 WIRE TIE TO DASH RADIO WIRING BEHIND THE RADIO.
- 2 PLUG CABLE INTO LEAD ON BACK OF RADIO.
- 1 SEE SHT 2 FOR ADDITIONAL INFORMATION.

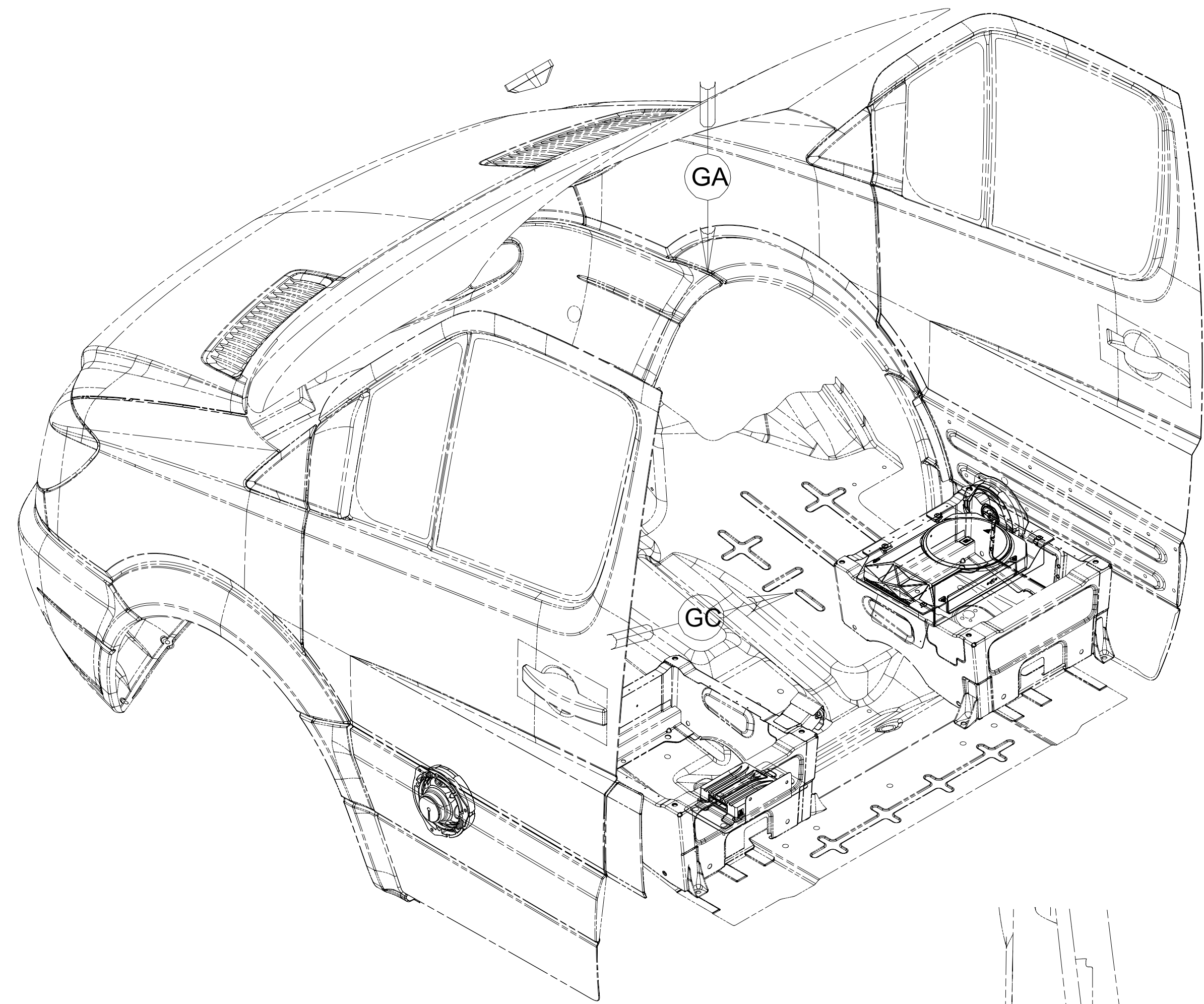
- 153 LG SCREEN-INFO/GPS SIRIUSXM
- 1MV MERCEDES-11030#DSL,4CYL,VAN
- 1MM MERCEDES-11,030# DIESEL, VAN
- 265 CODES/STANDARDS-CSA/CMVSS
- 1B1 CODES/STANDARDS USA

FOR ELECTRICAL TORQUE SPECIFICATIONS SEE DWG NO. 128783-01-000

FOR ELECTRICAL CALLOUTS SEE DWG NO. 121339-01-000

- 1B1 265 1MM 1MV 153

DESCRIPTION: WIRING INSTL-CHASSIS		
SHEET: 6 OF 7	ITEM/PART NO: 000027996 / 31616801000	REV



DETAIL GC

LOGO-JBL
302951-01-000 (2) 1



VELCRO- 1/2"
088792-08-000 (50 MM)
TAPE
086276-01-000 (2) (50 MM)

VELCRO- 1/2"
088792-08-000 (50 MM)
TAPE
086276-01-000 (2) (50 MM)

DETAIL GD 4

2
SPEAKER-6.25",
MIDRANGE,JBL
194528-01-000
SPACER-SPEAKER
000025517 / 315320-01-000
ADAPTER-SPEAKER,
SPRINTER
194530-01-000

WIRE ASM-CHASSIS
(REFERENCE)

3
WIRE ASM-AMP, INPUT
194532-01-000
WIRE ASM-AMP, OUTPUT
194532-02-000

AMPLIFIER-PREMIUM AUDIO,100
000031855 / 312664-02-000
PANEL-AMPLIFIER
195229-01-CHT
RIVET
165072-01-CHT (3)
NUT
0MD54F-06-000 (2)

2
SPEAKER-6.25",
MIDRANGE,JBL
194528-01-000
SPACER-SPEAKER
000025517 / 315320-01-000
ADAPTER-SPEAKER,
SPRINTER
194530-01-000

5
SUBWOOFER ASM-SUB W/ BRACKETS
000025680 / 315383-01-XXX

COVER-SEAT
DETAIL GD

5 RELOCATE 4WD MODULE TO SUBWOOFER BRACKET WHEN NEEDED.

4 CUT SEAT PEDESTAL COVER THAT IS SUPPLIED WITH CHASSIS. PLACE COVER SO THAT IT DOES NOT COVER SUBWOOFER. SECURE COVER IN PLACE WITH VELCRO.

3 WITH 57P
CONNECT 15 PIN HSGS FROM WIRE ASM-CHASSIS TO WIRE ASM-AMP
WITHOUT 57P
CONNECT 15 PIN HSGS IN WIRE ASM-CHASSIS TOGETHER.

2 REPLACE FACTORY DOOR SPEAKER WITH SPEAKER CALLED OUT.

1 CENTER ON BOTTOM OF SPEAKER GRILL ON DOOR PANEL. CLEAN SURFACE WITH PROMOTER 087211-01-000.

NOTES:

VIEW GA

FOR ELECTRICAL
TORQUE
SPECIFICATIONS
SEE DWG NO.
128783-01-000

X-X

FOR ELECTRICAL
CALLOUTS
SEE DWG NO.
121339-01-000

57P RADIO SPEAKERS-PREMIUM SOUND

265 CODES/STANDARDS-CSA/CMVSS

1B1 CODES/STANDARDS USA

1B1 265 57P

DESCRIPTION:

WIRING INSTL-CHASSIS

SHEET:
7 OF 7

ITEM/PART NO:
000027996 / 31616801000

REV

12-Jul-2017