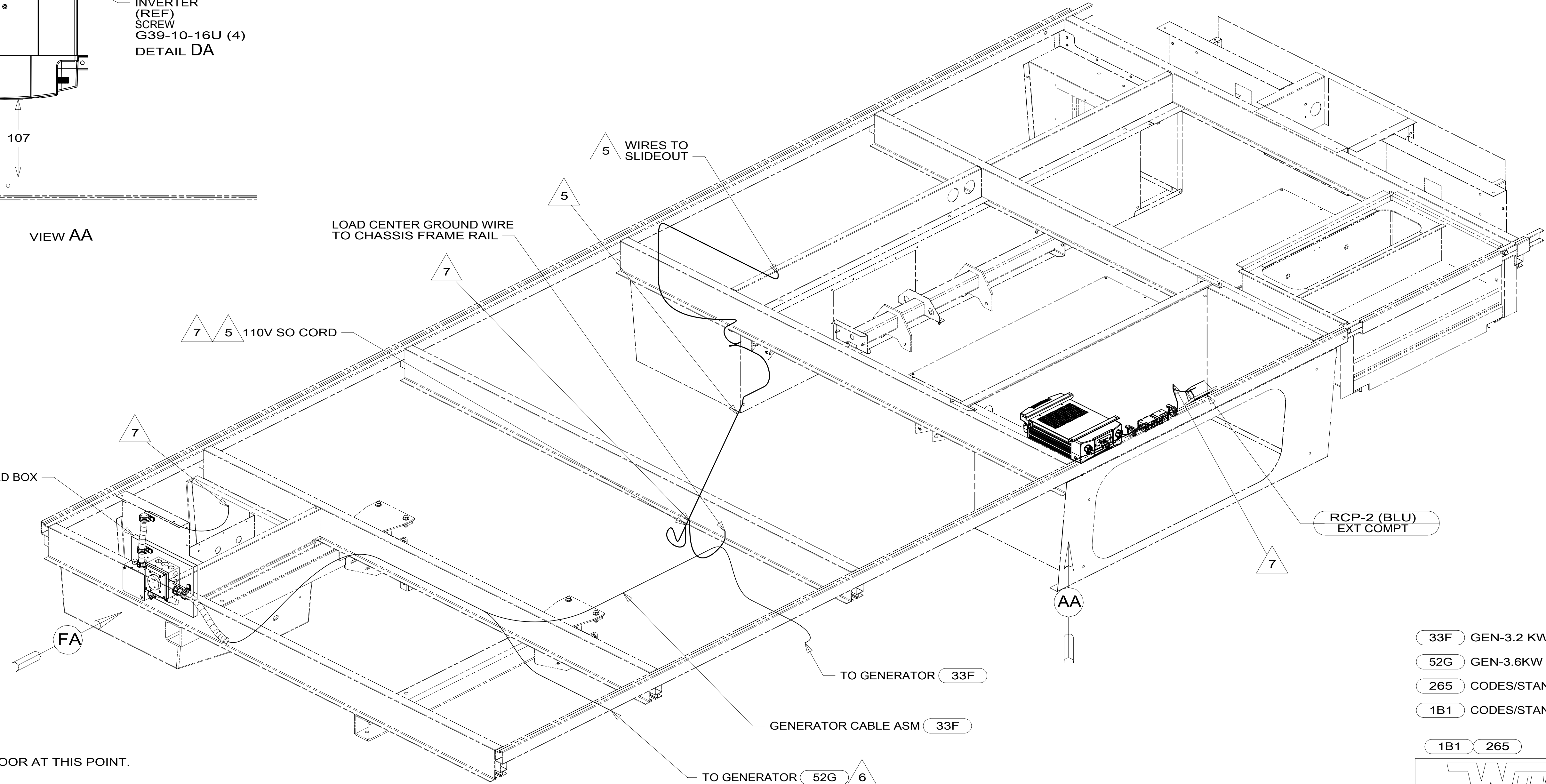


VIEW AA



- 7 WIRE ROUTED THROUGH FLOOR AT THIS POINT.
- 6 SEE GENERATOR INSTL FOR ADDITIONAL INFORMATION.
- 5 WIRE IS PART OF WIRE ASM-CHASSIS.
- 4. SEE WIRING DIAGRAM-BODY,110V FOR ADDITIONAL INFORMATION.
- 3. ALL GROUND WIRE TO BE COVERED WITH TUBING 8041-02-000.
- 2. ALL 110V WIRE TO BE CLAMPED WITH CLAMP 10497-05-000 WITHIN 200MM OF OUTLET BOXES, USE SCREW G67-10-12U.
- 1. AT MINIMUM ALL WIRES TO BE SUPPORTED AND SECURED PER CODE REQUIREMENTS. USE CLAMP 10495 OR 10497 OR WIRE TIE 8343 OR 108046 AND SCREW G67-XX-XXX OR G56-XX-XXX AS APPROPRIATE FOR INSTALLATION.

NOTES:

- 33F GEN-3.2 KW ONAN DIESEL
- 52G GEN-3.6KW ONAN LP MICROQUIET
- 265 CODES/STANDARDS-CSA/CMVSS
- 1B1 CODES/STANDARDS USA

WINNEBAGO
COPYRIGHT 2016 WINNEBAGO INDUSTRIES, INC.

DSNR:	ALL DIMENSIONS ARE IN MILLIMETERS
DFFR:	MATERIAL:
UNSPECIFIED TOLERANCES:	WEIGHT: (LBS)
WHOLE DIM (X) : 3	FIRST USED:
ONE-PLACE (X.X) : 1.5	17 524J
TWO-PLACE (X.XX) : 0.50	
ANGLE : 1°	

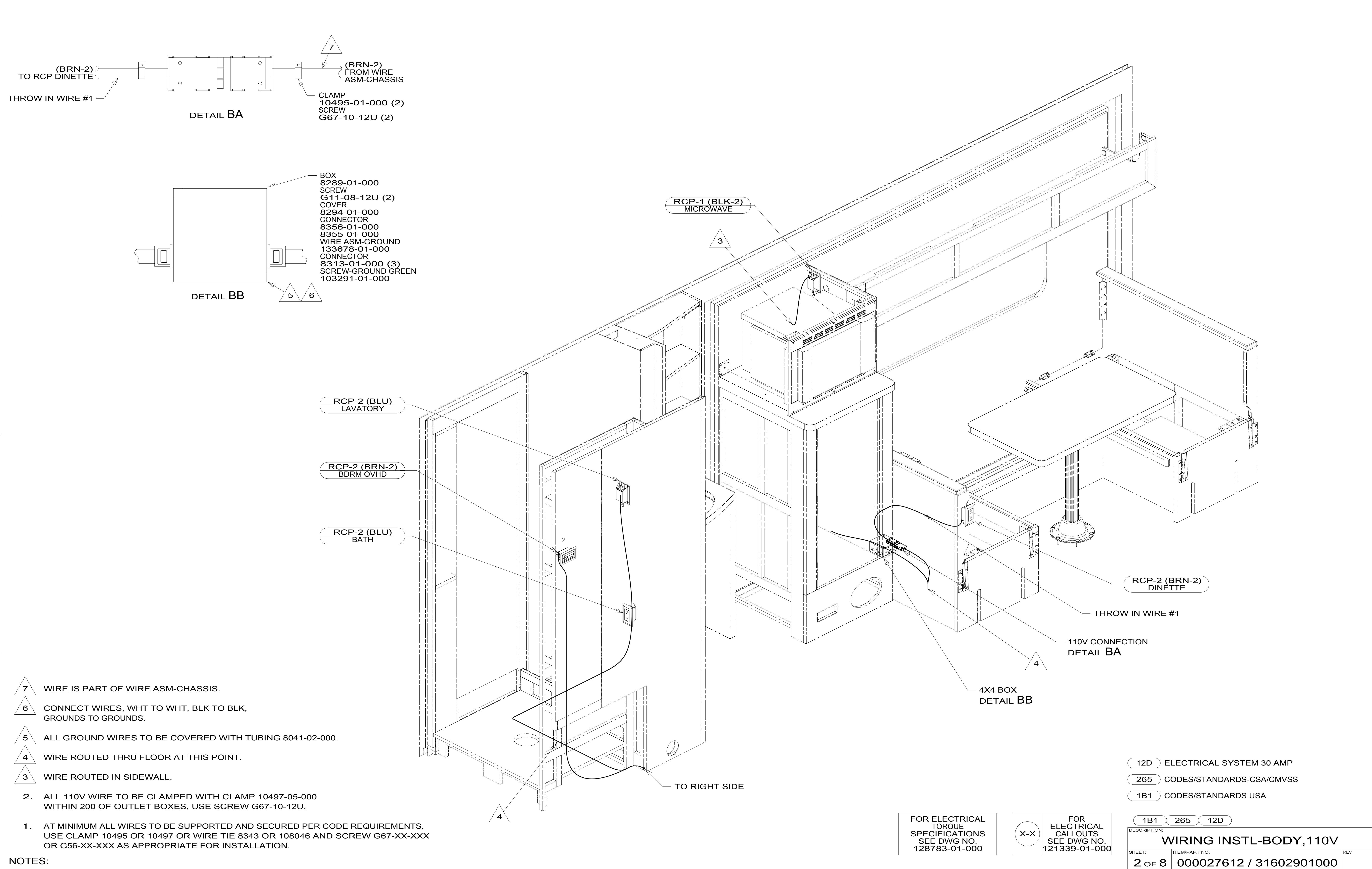
REFER TO ES0018 FOR FASTENER TIGHTENING GUIDELINES

DESCRIPTION:
WIRING INSTL-BODY, 110V

SHEET: 1 OF 8	ITEM/PART NO: 000027612 / 31602901000	REV:
---------------	---------------------------------------	------

FOR ELECTRICAL TORQUE SPECIFICATIONS SEE DWG NO. 128783-01-000

FOR ELECTRICAL CALLOUTS SEE DWG NO. 121339-01-000



- 7 WIRE IS PART OF WIRE ASM-CHASSIS.
 - 6 CONNECT WIRES, WHT TO WHT, BLK TO BLK, GROUNDS TO GROUNDS.
 - 5 ALL GROUND WIRES TO BE COVERED WITH TUBING 8041-02-000.
 - 4 WIRE ROUTED THRU FLOOR AT THIS POINT.
 - 3 WIRE ROUTED IN SIDEWALL.
2. ALL 110V WIRE TO BE CLAMPED WITH CLAMP 10497-05-000 WITHIN 200 OF OUTLET BOXES, USE SCREW G67-10-12U.
1. AT MINIMUM ALL WIRES TO BE SUPPORTED AND SECURED PER CODE REQUIREMENTS. USE CLAMP 10495 OR 10497 OR WIRE TIE 8343 OR 108046 AND SCREW G67-XX-XXX OR G56-XX-XXX AS APPROPRIATE FOR INSTALLATION.

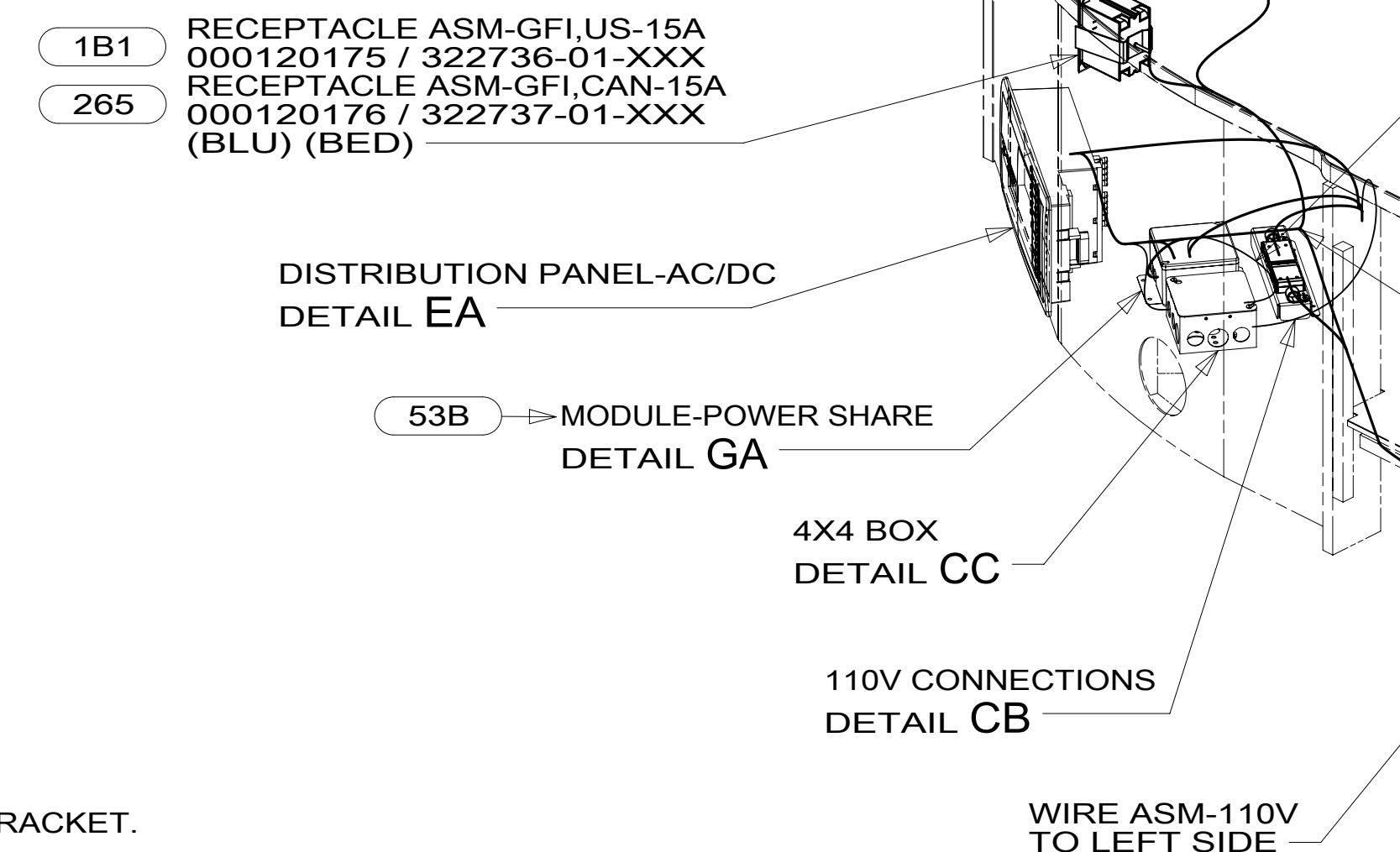
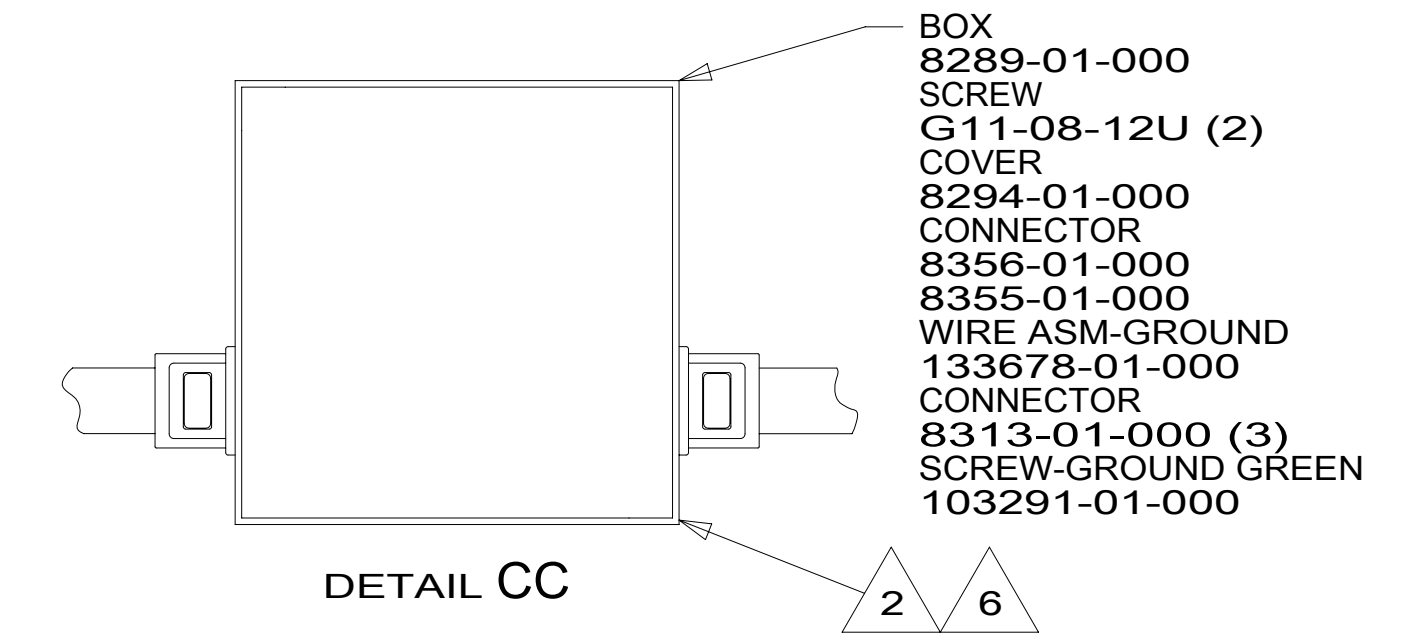
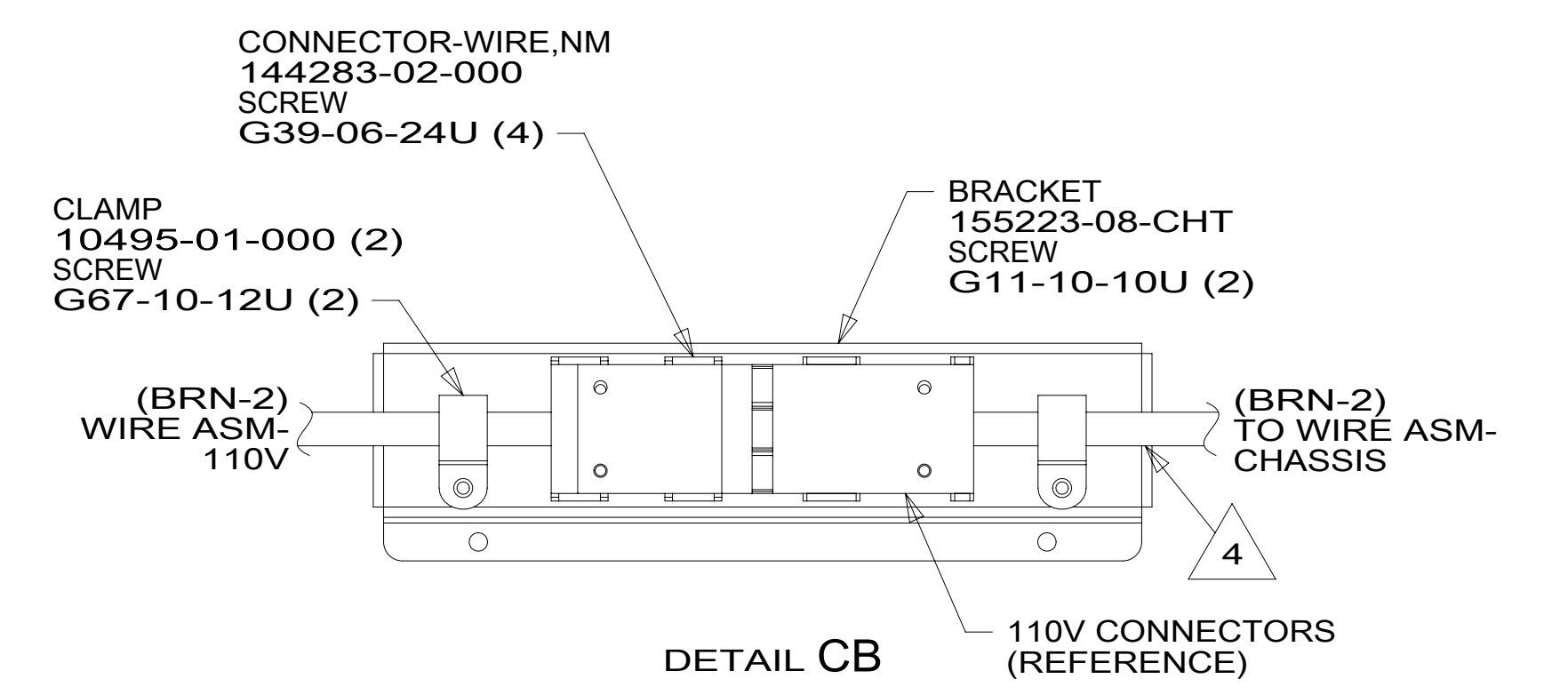
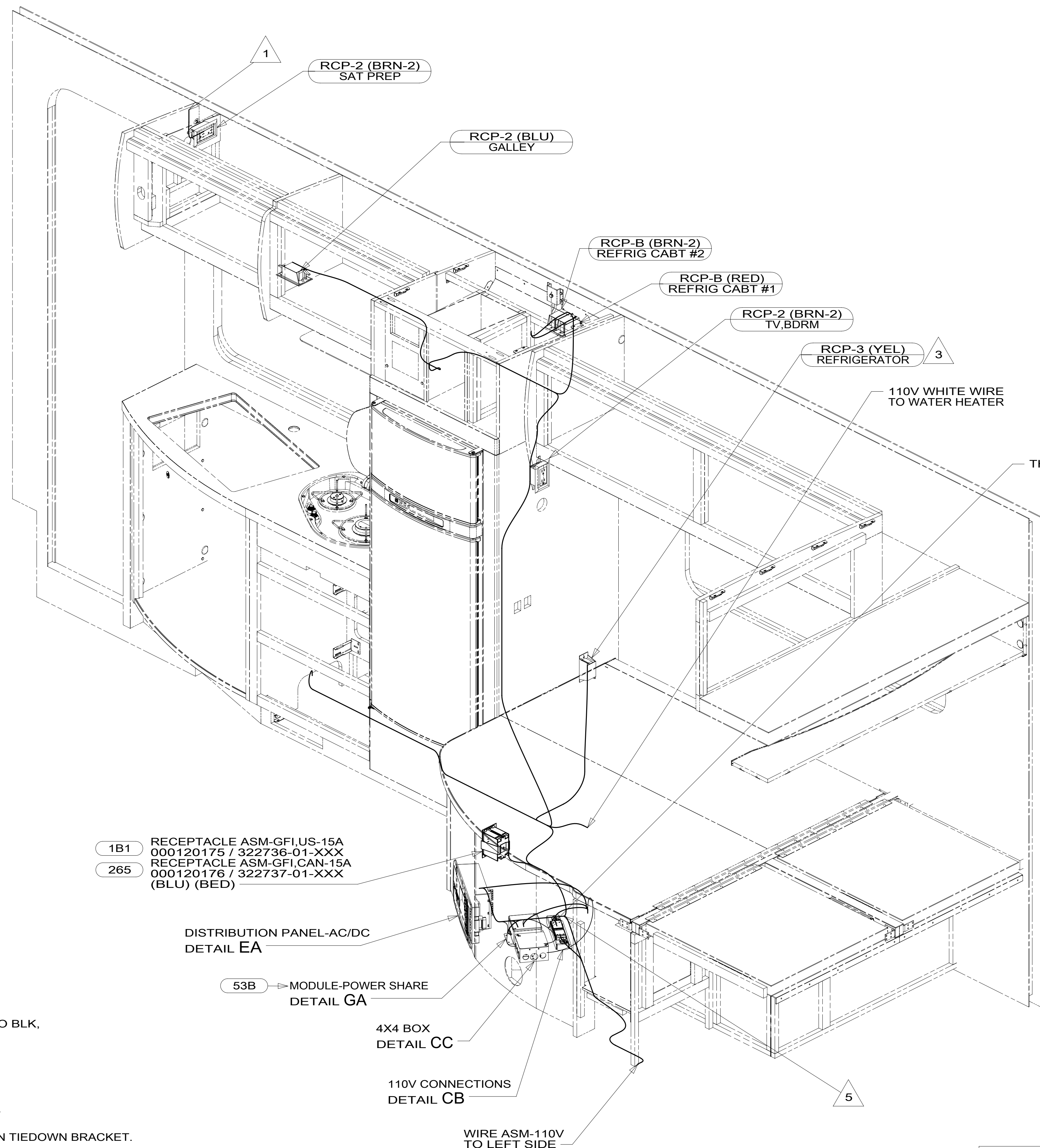
NOTES:

FOR ELECTRICAL TORQUE SPECIFICATIONS SEE DWG NO. 128783-01-000

FOR ELECTRICAL CALLOUTS SEE DWG NO. 121339-01-000

- 12D ELECTRICAL SYSTEM 30 AMP
- 265 CODES/STANDARDS-CSA/CMVSS
- 1B1 CODES/STANDARDS USA

DESCRIPTION:		
WIRING INSTL-BODY, 110V		
SHEET:	ITEM/PART NO.:	REV:
2 OF 8	000027612 / 31602901000	



- NOTES:
- 6 CONNECT WIRES, WHT TO WHT, BLK TO BLK, GROUNDS TO GROUNDS.
 - 5 (BRN) 3400 LOOP TO LEFT SIDE AND (BLU) 4200 DROP TO LEFT SIDE.
 - 4 WIRE IS PART OF WIRE ASM-CHASSIS.
 - 3 LOCATE REFRIGERATOR RECEPTACLE ON TIEDOWN BRACKET.
 - 2 ALL GROUND WIRES TO BE COVERED WITH TUBING 8041-02-000.
 - 1 WIRE ROUTED IN ROOF.

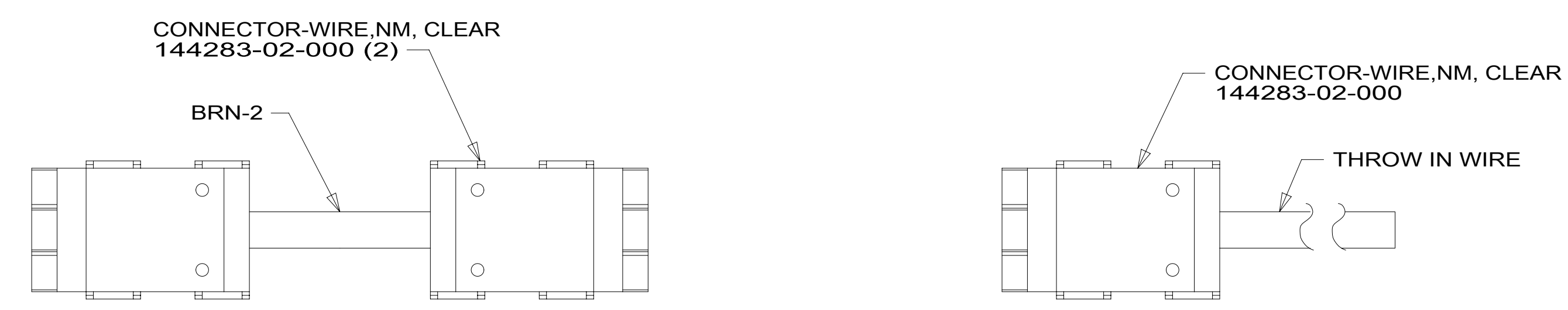
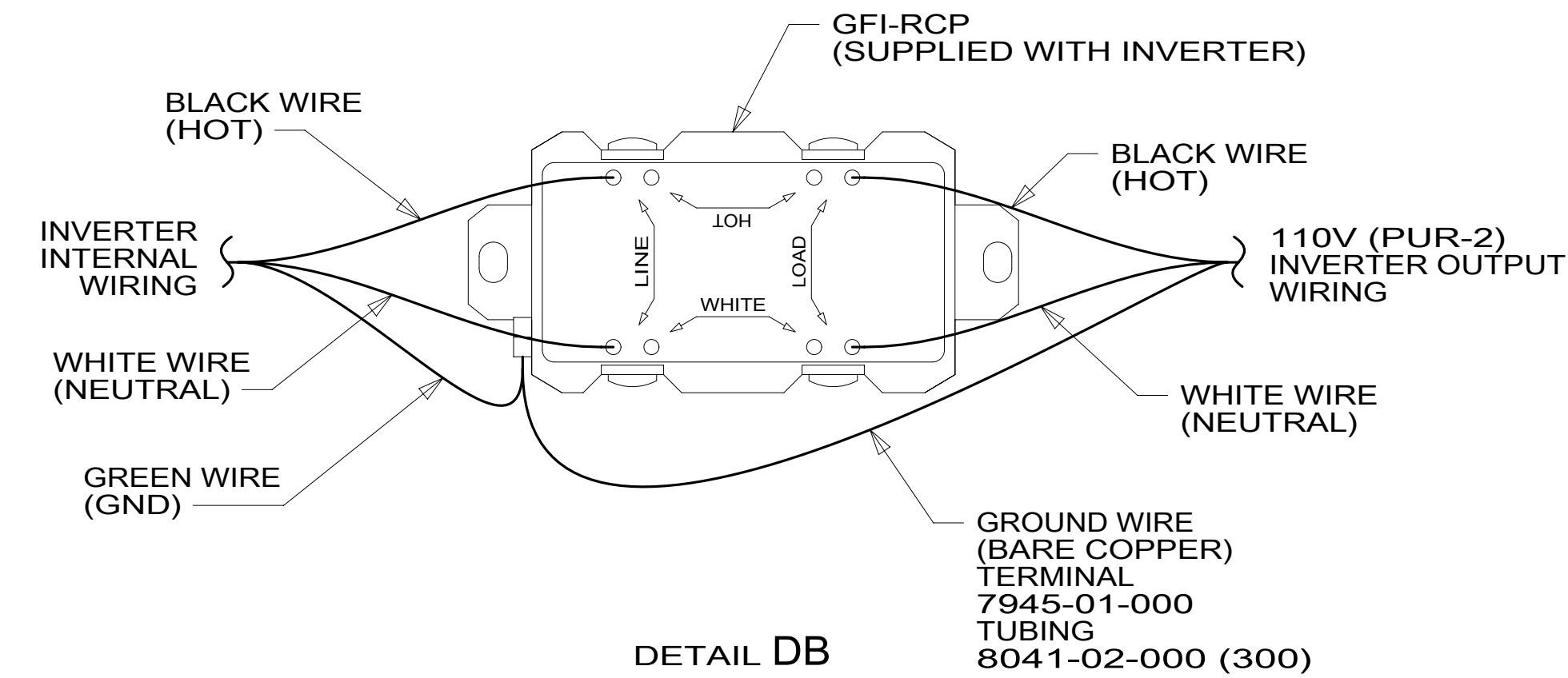
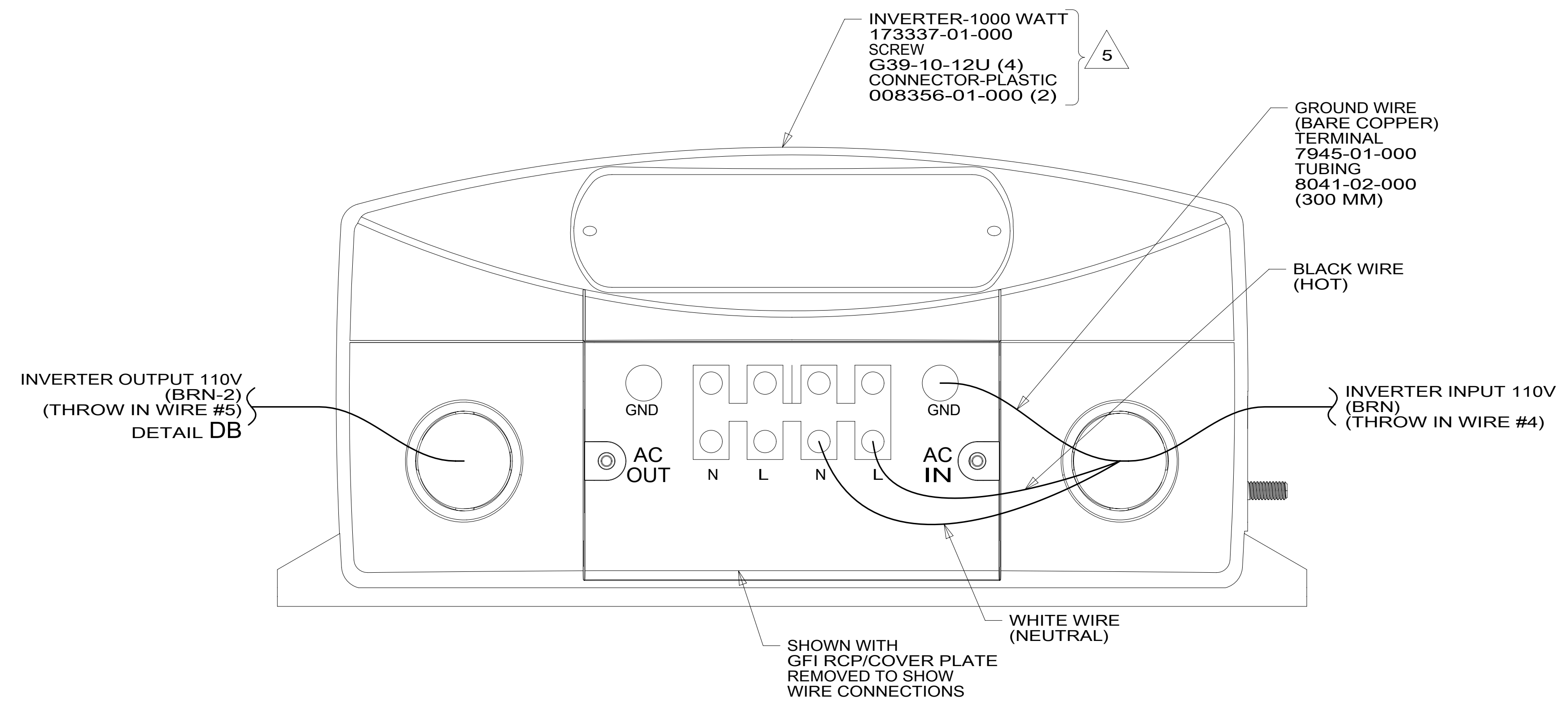
FOR ELECTRICAL TORQUE SPECIFICATIONS SEE DWG NO. 128783-01-000

FOR ELECTRICAL CALLOUTS SEE DWG NO. 121339-01-000

- 53B WTR HTR-6GAL ELECTRIC/LP GAS
- 12D ELECTRICAL SYSTEM 30 AMP
- 265 CODES/STANDARDS-CSA/CMVSS
- 1B1 CODES/STANDARDS USA

DESCRIPTION:	
WIRING INSTL-BODY, 110V	
SHEET: 3 OF 8	ITEM/PART NO: 000027612 / 31602901000
REV:	31-May-2017

RED	1B1	136135-07-033	
	265	136136-07-033	
YEL	1B1	136131-05-019	
	265	136134-05-019	
BLK	1B1	136135-06-012	53B
	265	136136-06-012	53B
BLK	1B1	136135-06-012	1BU
	265	136136-06-012	1BU
BLK-2	1B1		4
	265		4
BRN	1B1	136131-03-037	2
	265	136134-03-037	2
BRN-2	1B1	136131-19-150	3
	265	136134-19-150	3
BLU	1B1	136131-02-185	
	265	136134-02-185	
WHT	1B1	136135-09-016	53B
	265	136136-09-016	53B
MAIN	1B1	136137-01-035	
	265	136138-01-035	
THROW IN WIRE #1	1B1	136131-05-014	2
	265	136134-05-014	2
THROW IN WIRE #2	1B1	136135-22-008	53B
	265	136136-22-008	53B
THROW IN WIRE #4	1B1	136131-03-006	2 6
	265	136134-03-006	2 6
THROW IN WIRE #5	1B1	136131-19-004	2 6
	265	136134-19-004	2 6
GENERATOR CABLE ASM	1B1	164957-07-035	33F
	265	164957-08-035	33F
GROUND		136145-02-020	



NOTES:

3 FOR CONNECTOR INSTALLATION SEE DETAIL DC.

2 FOR CONNECTOR INSTALLATION SEE DETAIL DD.

1. ALL GROUND WIRES TO BE COVERED WITH TUBING 8041-02-000.

6 FOR ADDITIONAL INFORMATION SEE DETAIL DA.

5 INVERTER SUPPLIED WITH REMOTE PANEL. SEND PANEL TO MANUFACTURING LINE.

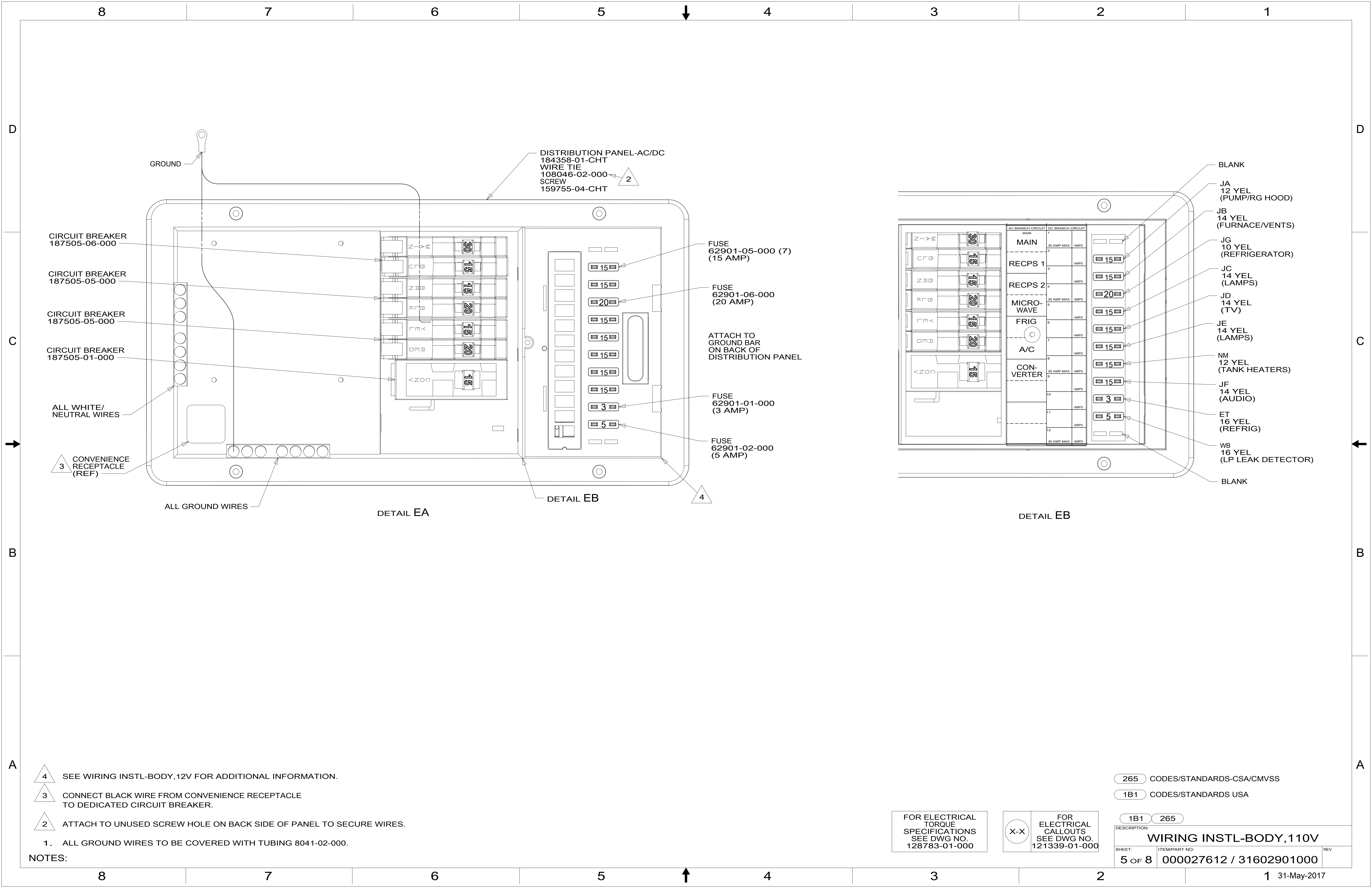
4 WIRE IS PART OF WIRE ASM-CHASSIS.

FOR ELECTRICAL TORQUE SPECIFICATIONS SEE DWG NO. 128783-01-000

FOR ELECTRICAL CALLOUTS SEE DWG NO. 121339-01-000

- 1BU WTR HTR TKLS W/RECIRCUL PUMP
- 53B WTR HTR-6GAL ELECTRIC/LP GAS
- 33F GEN-3.2 KW ONAN DIESEL
- 265 CODES/STANDARDS-CSA/CMVSS
- 1B1 CODES/STANDARDS USA

DESCRIPTION:	1B1 265	
WIRING INSTL-BODY, 110V		
SHEET:	ITEM/PART NO:	REV
4 OF 8	000027612 / 31602901000	



- 4 SEE WIRING INSTL-BODY, 12V FOR ADDITIONAL INFORMATION.
- 3 CONNECT BLACK WIRE FROM CONVENIENCE RECEPTACLE TO DEDICATED CIRCUIT BREAKER.
- 2 ATTACH TO UNUSED SCREW HOLE ON BACK SIDE OF PANEL TO SECURE WIRES.

1. ALL GROUND WIRES TO BE COVERED WITH TUBING 8041-02-000.

NOTES:

FOR ELECTRICAL TORQUE SPECIFICATIONS SEE DWG NO. 128783-01-000

FOR ELECTRICAL CALLOUTS SEE DWG NO. 121339-01-000

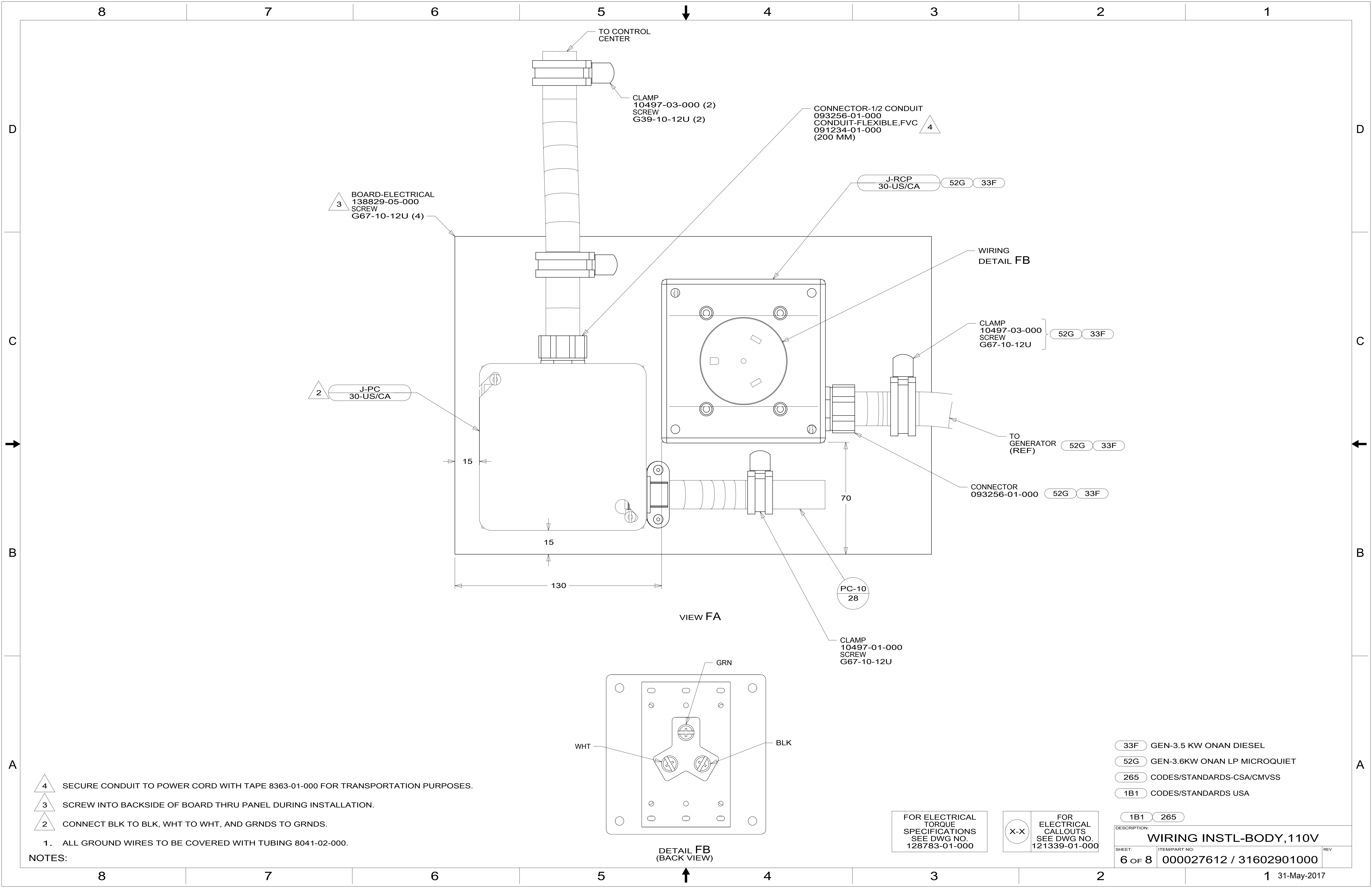
- 265 CODES/STANDARDS-CSA/CMVSS
- 1B1 CODES/STANDARDS USA

DESCRIPTION: 1B1 265

WIRING INSTL-BODY, 110V

SHEET: 5 OF 8 ITEM/PART NO: 000027612 / 31602901000 REV

1 31-May-2017



- 4 SECURE CONDUIT TO POWER CORD WITH TAPE 8363-01-000 FOR TRANSPORTATION PURPOSES.
- 3 SCREW INTO BACKSIDE OF BOARD THRU PANEL DURING INSTALLATION.
- 2 CONNECT BLK TO BLK, WHT TO WHT, AND GRNDS TO GRNDS.

1. ALL GROUND WIRES TO BE COVERED WITH TUBING 8041-02-000.

NOTES:

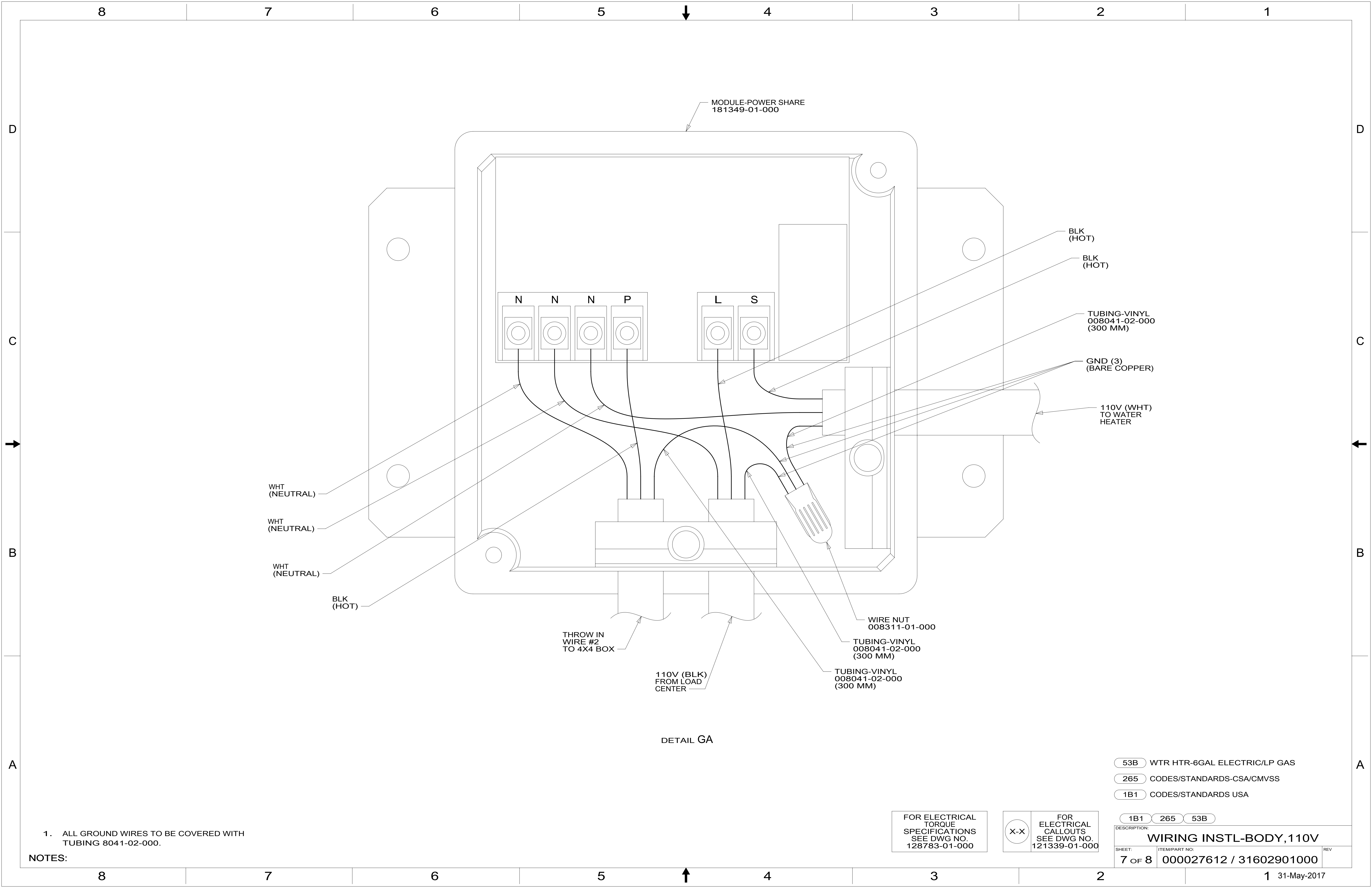
- 33F GEN-3.5 KW ONAN DIESEL
- 52G GEN-3.6KW ONAN LP MICROQUIET
- 265 CODES/STANDARDS-CSA/CMVSS
- 1B1 CODES/STANDARDS USA

FOR ELECTRICAL TORQUE SPECIFICATIONS SEE DWG NO. 128783-01-000

FOR ELECTRICAL CALLOUTS SEE DWG NO. 121339-01-000

1B1 265

DESCRIPTION: WIRING INSTL-BODY, 110V		
SHEET: 6 OF 8	ITEM/PART NO: 000027612 / 31602901000	REV



MODULE-POWER SHARE
181349-01-000

BLK
(HOT)

BLK
(HOT)

TUBING-VINYL
008041-02-000
(300 MM)

GND (3)
(BARE COPPER)

110V (WHT)
TO WATER
HEATER

N N N P

L S

WHT
(NEUTRAL)

WHT
(NEUTRAL)

WHT
(NEUTRAL)

BLK
(HOT)

THROW IN
WIRE #2
TO 4X4 BOX

110V (BLK)
FROM LOAD
CENTER

WIRE NUT
008311-01-000

TUBING-VINYL
008041-02-000
(300 MM)

TUBING-VINYL
008041-02-000
(300 MM)

DETAIL GA

- 53B WTR HTR-6GAL ELECTRIC/LP GAS
- 265 CODES/STANDARDS-CSA/CMVSS
- 1B1 CODES/STANDARDS USA

1B1 265 53B

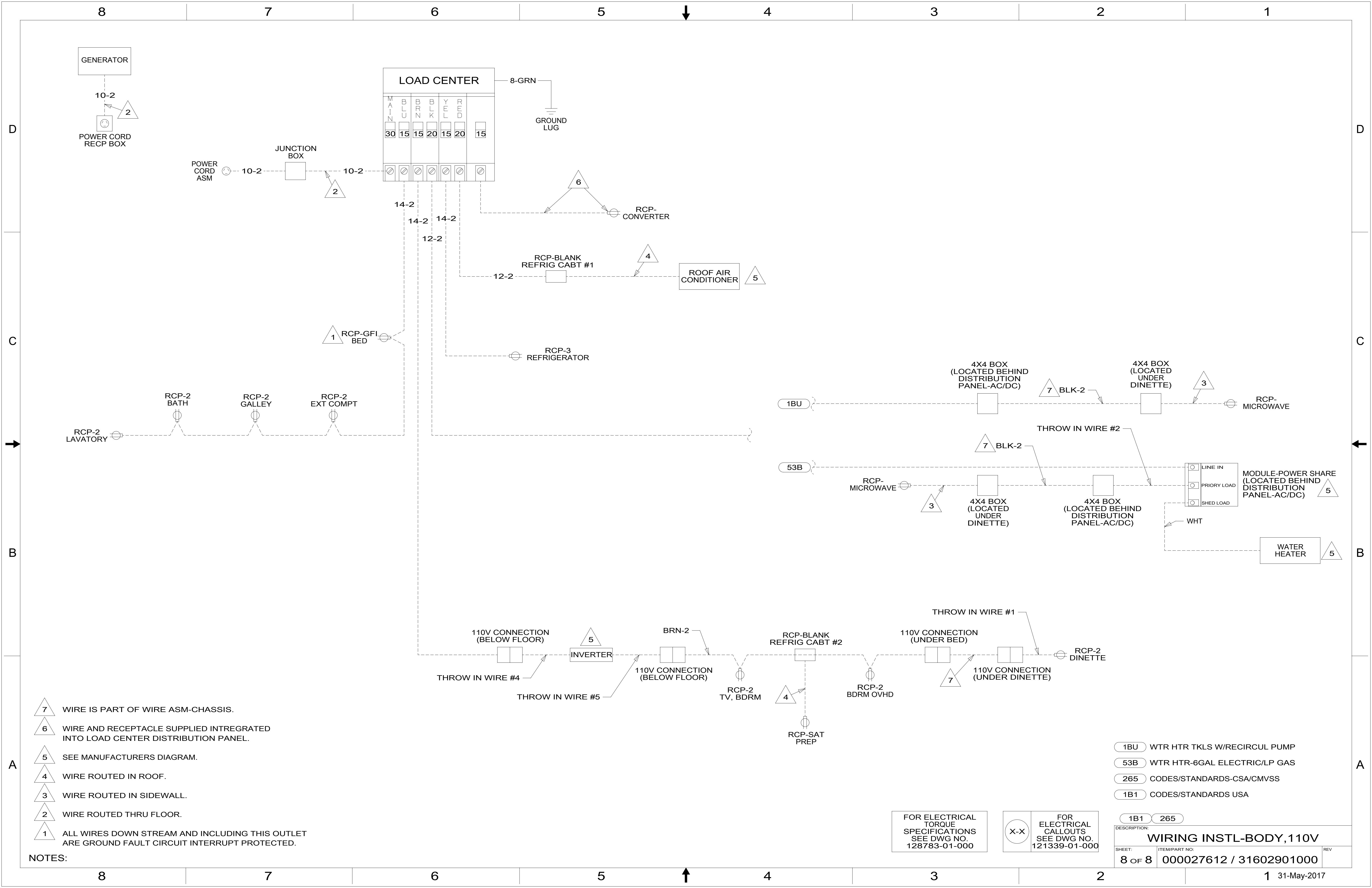
FOR ELECTRICAL
TORQUE
SPECIFICATIONS
SEE DWG NO.
128783-01-000

FOR
ELECTRICAL
CALLOUTS
SEE DWG NO.
121339-01-000

DESCRIPTION:
WIRING INSTL-BODY, 110V

SHEET: 7 OF 8 ITEM/PART NO: 000027612 / 31602901000 REV

NOTES:
1. ALL GROUND WIRES TO BE COVERED WITH
TUBING 8041-02-000.



- NOTES:
- 7 WIRE IS PART OF WIRE ASM-CHASSIS.
 - 6 WIRE AND RECEPTACLE SUPPLIED INTREGATED INTO LOAD CENTER DISTRIBUTION PANEL.
 - 5 SEE MANUFACTURERS DIAGRAM.
 - 4 WIRE ROUTED IN ROOF.
 - 3 WIRE ROUTED IN SIDEWALL.
 - 2 WIRE ROUTED THRU FLOOR.
 - 1 ALL WIRES DOWN STREAM AND INCLUDING THIS OUTLET ARE GROUND FAULT CIRCUIT INTERRUPT PROTECTED.

FOR ELECTRICAL TORQUE SPECIFICATIONS SEE DWG NO. 128783-01-000

FOR ELECTRICAL CALLOUTS SEE DWG NO. 121339-01-000

- 1BU WTR HTR TKLS W/RECIRCUL PUMP
- 53B WTR HTR-6GAL ELECTRIC/LP GAS
- 265 CODES/STANDARDS-CSA/CMVSS
- 1B1 CODES/STANDARDS USA

DESCRIPTION:		1B1 265	
WIRING INSTL-BODY, 110V			
SHEET:	ITEM/PART NO.:	REV	
8 OF 8	000027612 / 31602901000		