

FOR ELECTRICAL TORQUE SPECIFICATIONS SEE DWG NO. 128783-01-000

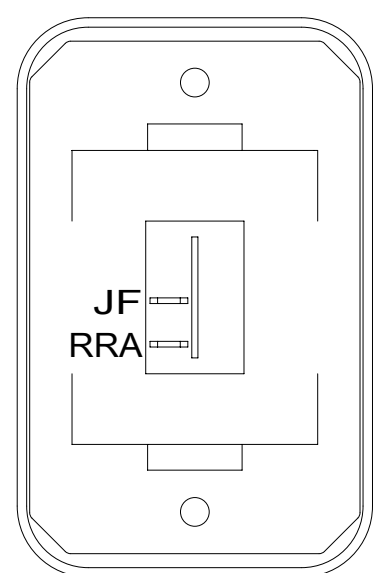
FOR ELECTRICAL CALLOUTS SEE DWG NO. 121339-01-000

- NOTES:
- 7 CONNECT YELLOW WIRES TO MARKED TERMINAL ON THE ALARM AND LIGHT. KEEP LIKE TERMINALS TOGETHER. USE 008343-01-000 TO SECURE ALARM BACK TO LOOM.
 - 6 DRILL A 1/2 INCH HOLE AT DIMENSIONS SHOWN TO INSERT LIGHT. DISCARD RUBBER GASKET THAT COMES WITH LIGHT AND INSTALL LIGHT INTO HOLE.
 - 5 DRILL 12.3 MM HOLE INTO DASH PANEL.
 - 4 DASH STRUCTURE LOCATED BEHIND LOWER DASH PANEL.
 - 3 LOWER DASH PANEL.
 - 2 SEE WIRING INSTL-EXTERIOR LAMPS FOR ADDITIONAL INFORMATION.
 - 1 FOR CUTOUT DIMENSIONS SEE DETAIL CE AND DETAIL CF.

- 50R FRONT BUNK-PULL DOWN
- 28G SUNVISOR-POWERED (1)
- 808 CABINET, FRONT CAB OVERHEAD
- 50R FRONT BUNK-PULL DOWN
- 265 CODES/STANDARDS-CSA/CMVSS
- 1B1 CODES/STANDARDS USA

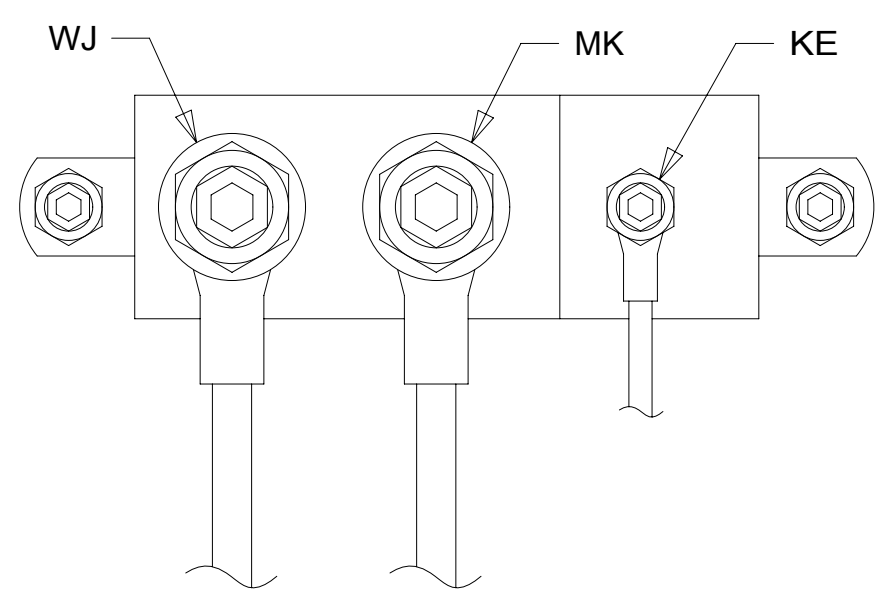
DESCRIPTION:		1B1 265	
WIRING INSTL-FRONT END			
SHEET:	ITEM/PART NO.:	REV	
3 OF 9	000027592 / 31602401000		

8 7 6 5 4 3 2 1

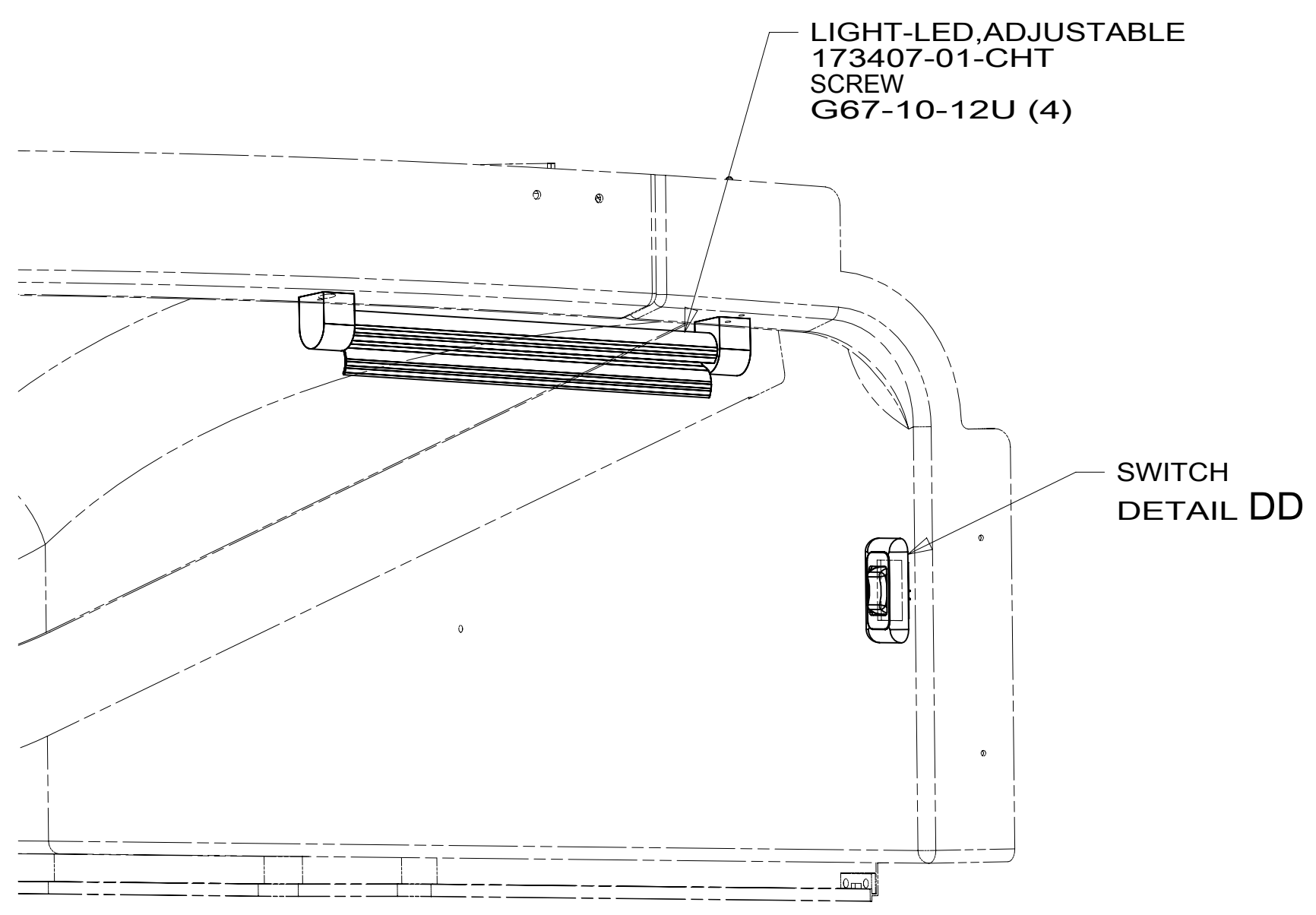


SWITCH-ROCKER
135740-01-CHT
SWITCH-BASE
135741-01-CHT
SWITCH-BEZEL
135742-01-CHT
SCREW
G11-08-08U (2)

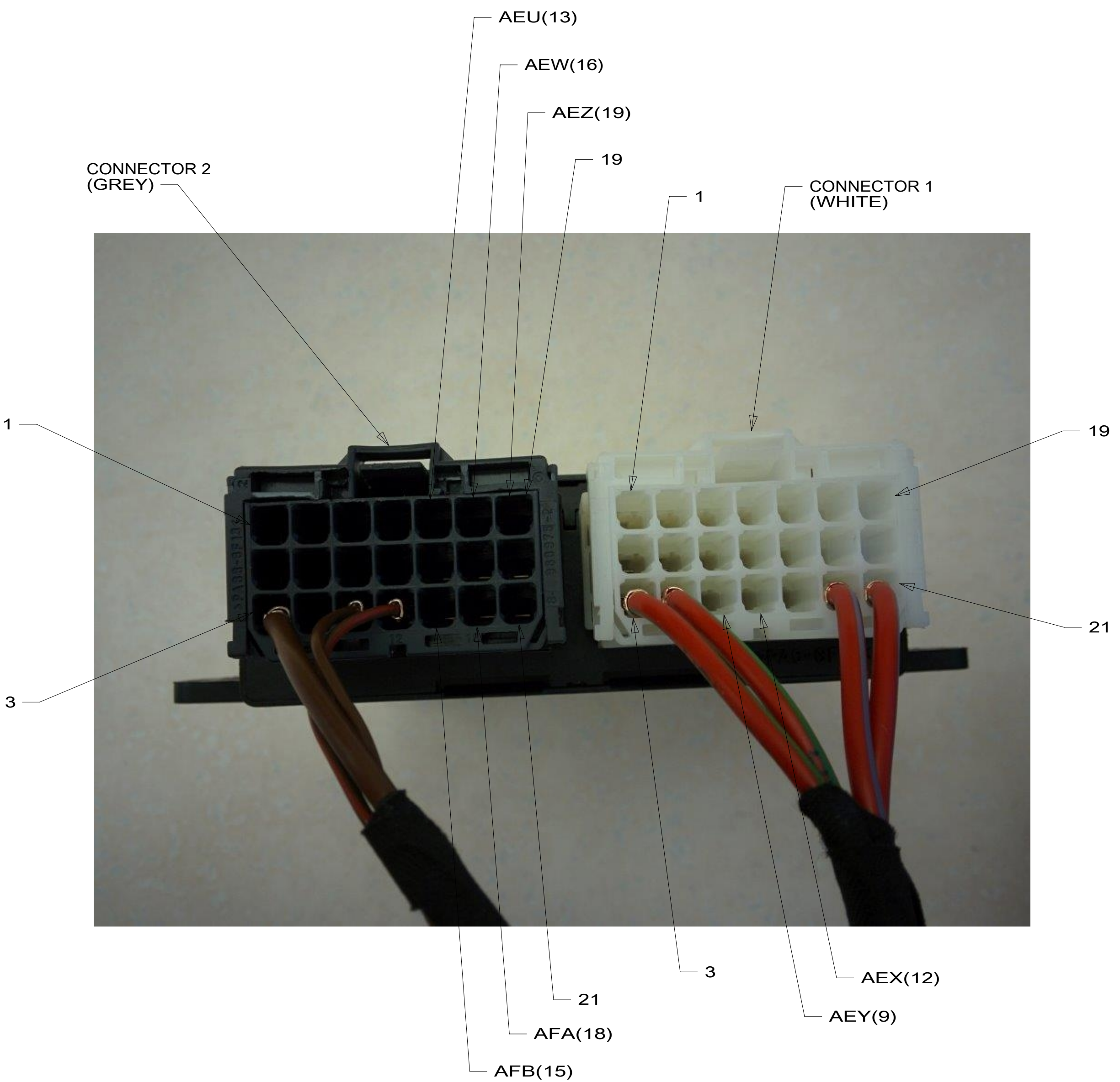
DETAIL DD



DETAIL DB 1



DETAIL DC 50R



DETAIL DA 1

1 CONNECTION POINT IS LOCATED UNDER DRIVER'S SEAT.

NOTES:

FOR ELECTRICAL TORQUE SPECIFICATIONS SEE DWG NO. 128783-01-000

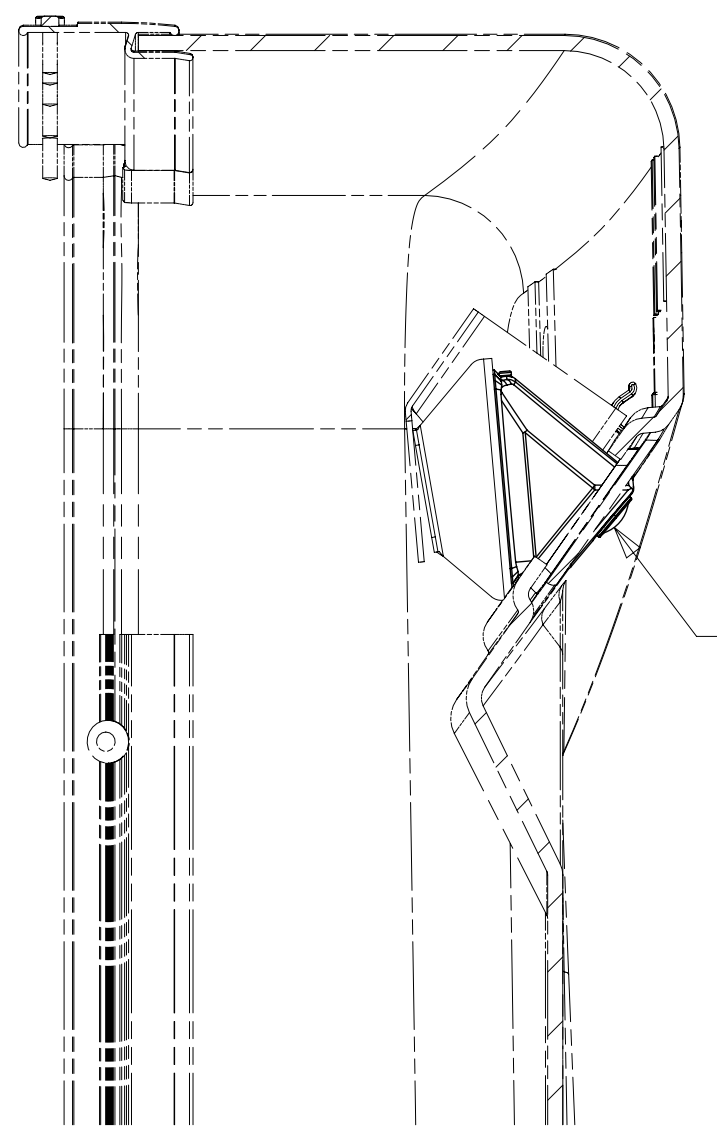
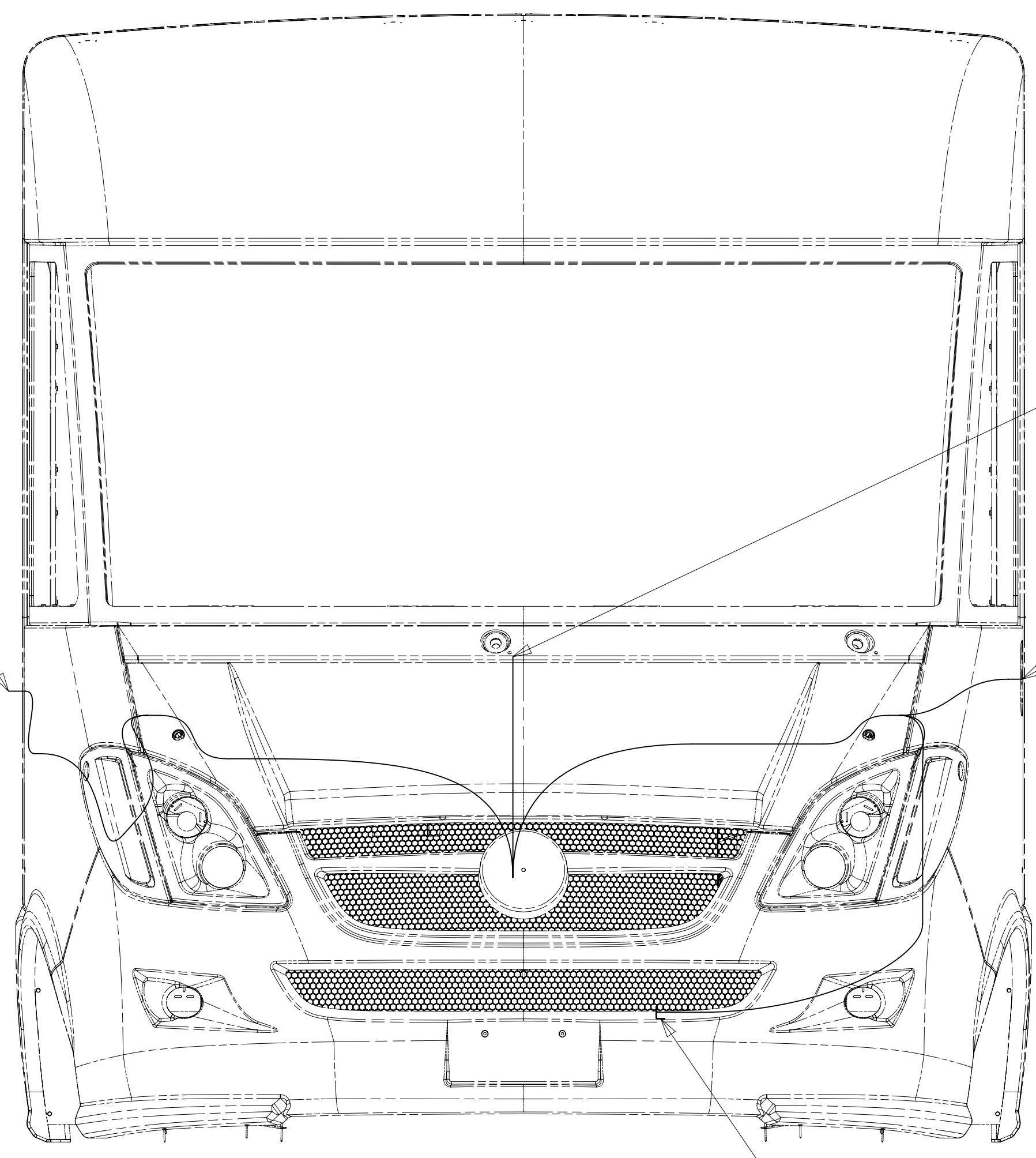
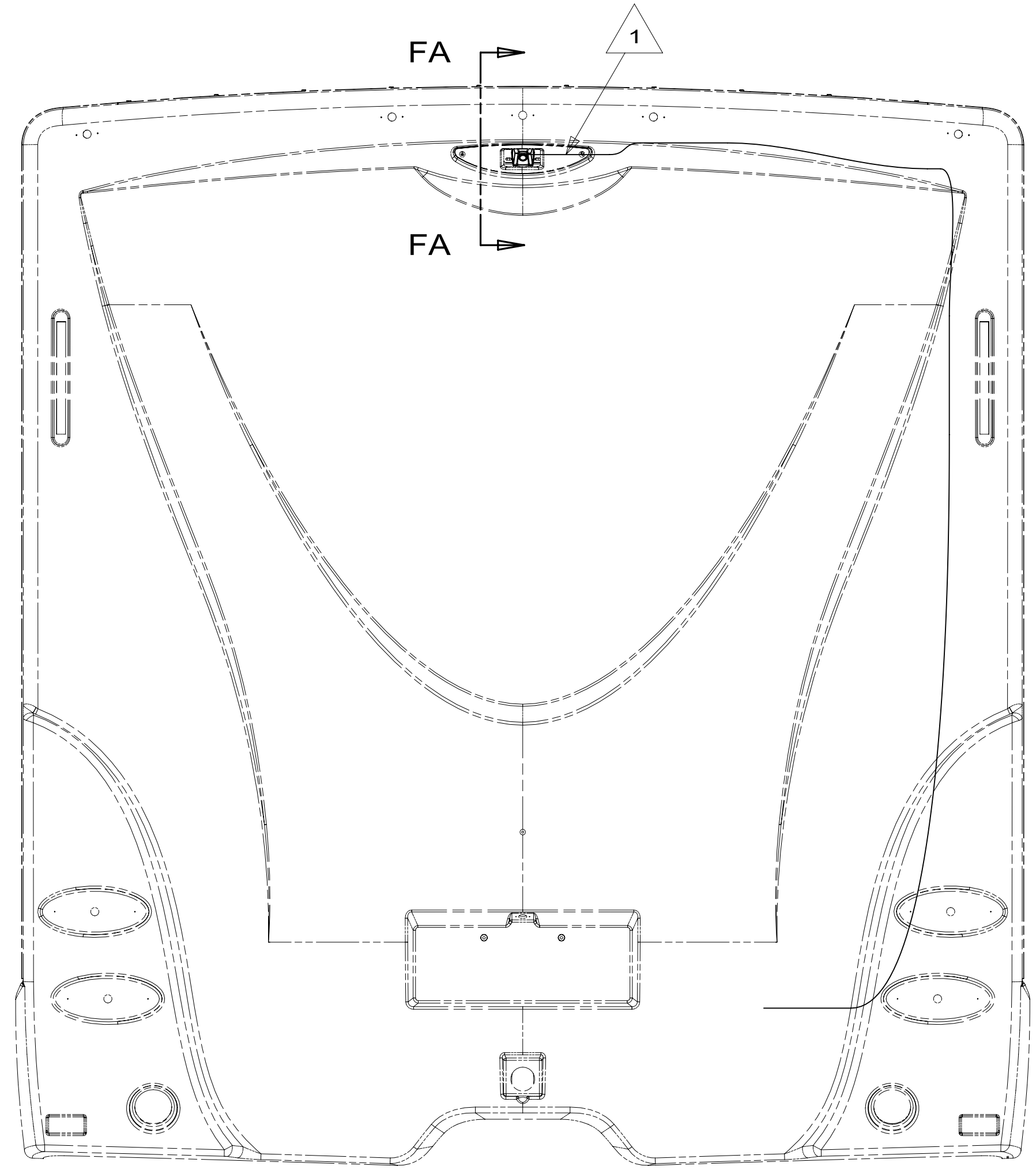
FOR ELECTRICAL CALLOUTS SEE DWG NO. 121339-01-000

- 50R FRONT BUNK-PULL DOWN
- 265 CODES/STANDARDS-CSA/CMVSS
- 1B1 CODES/STANDARDS USA

DESCRIPTION:	
1B1 265	
WIRING INSTL-FRONT END	
SHEET:	ITEM/PART NO:
4 OF 9	000027592 / 31602401000
REV	

8 7 6 5 4 3 2 1 27-Apr-2018

8 7 6 5 4 3 2 1



CAMERA-REARVIEW
000025359 / 315257-01-000
SCREW
G39-10-12U (EXT)(4)
BRACKET-CAMERA MOUNT
000025625 / 315691-01-CHT

SECTION FA-FA

- NOTES:
- 3 MOUNT ON TOP OF BUMPER NEXT TO CHASSIS TEMP SENSOR.
 - 2 CONNECT CAMERA CABLE TO MIRROR.
 - 1 ROUTE CAMERA CABLE UP BACKWALL TO REAR VIEW CAMERA

265 CODES/STANDARDS-CSA/CMVSS
1B1 CODES/STANDARDS USA

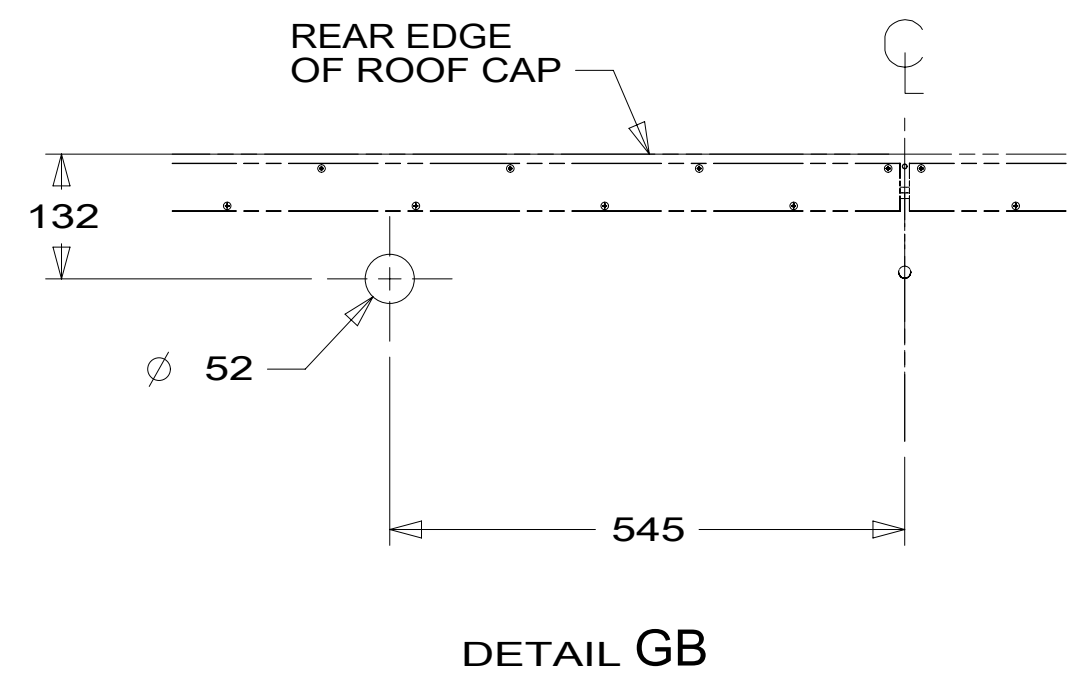
FOR ELECTRICAL TORQUE SPECIFICATIONS SEE DWG NO. 128783-01-000

FOR ELECTRICAL CALLOUTS SEE DWG NO. 121339-01-000

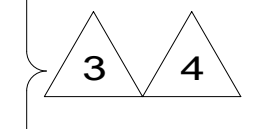
DESCRIPTION:	
WIRING INSTL-FRONT END	
SHEET:	ITEM/PART NO:
6 OF 9	000027592 / 31602401000
REV	
	1 27-Apr-2018

8 7 6 5 4 3 2 1

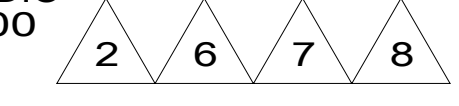
8 7 6 5 4 3 2 1



ANTENNA-SATELLITE RADIO
(SUPPLIED W/ SXM RECEIVER)
PLATE-SATELLITE RADIO
177256-03-CHT
SCREW
G11-08-08U (4)
SEAL
DETAIL GB



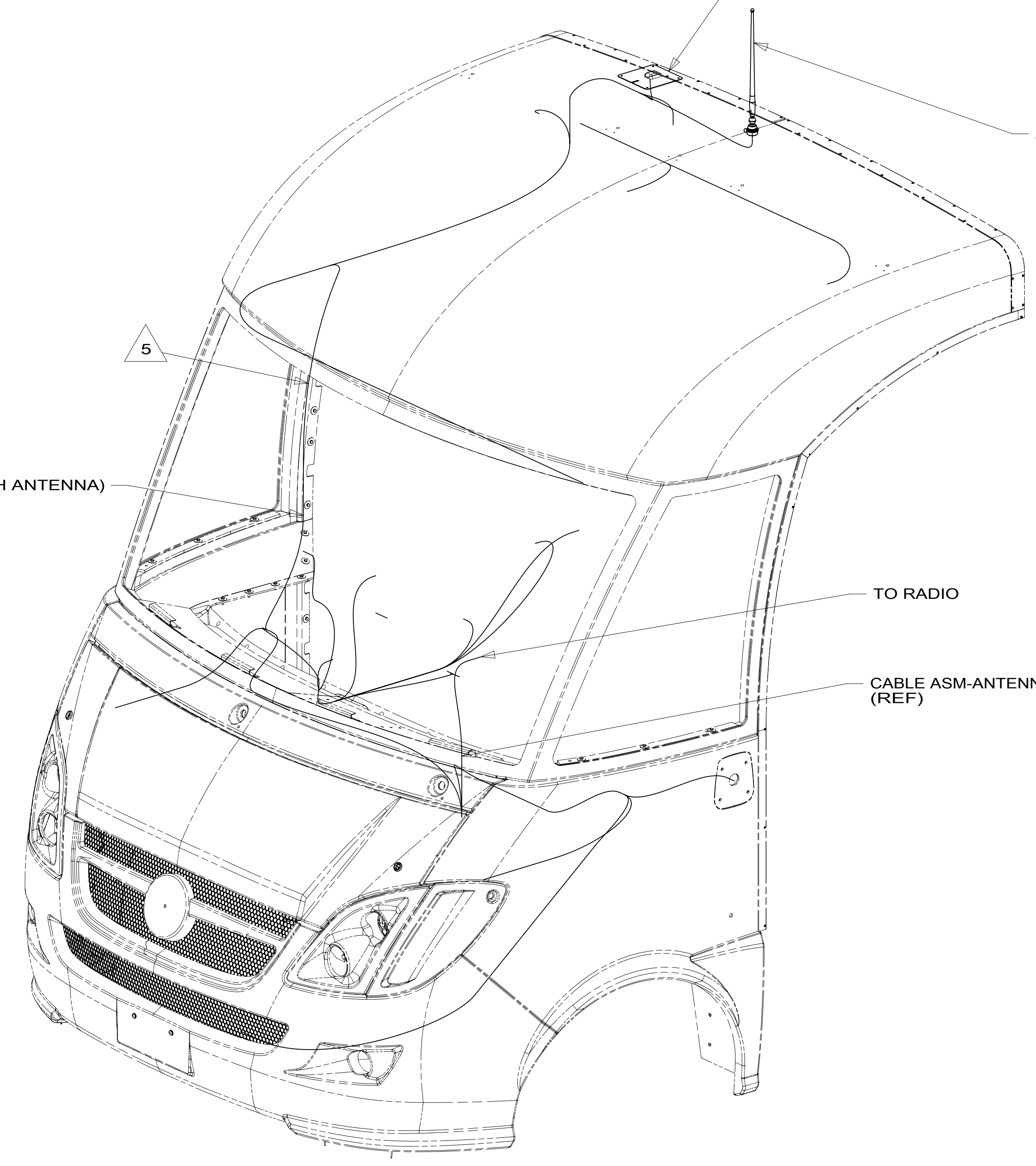
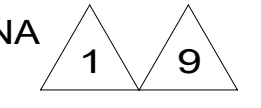
ANTENNA-RADIO
90944-01-000
SCREW
G39-08-12U



CABLE ASM-SAT
(SUPPLIED WITH ANTENNA)

TO RADIO

CABLE ASM-ANTENNA
(REF)



VIEW GA

- NOTES:
- 9 CABLE IS INTEGRATED INTO WIRE ASM-IP,MAIN.
 - 8 REMOVE AND REINSTALL AFTER PAINT.
 - 7 CUT AND REMOVE A 75MM X 75MM AREA OF THE ALUMINUM INSULATION, CENTERED ABOUT THE RADIO ANTENNA ROOF CAP.
 - 6 USE SCREW TO ATTACH ANTENNA GROUND CABLE TO CAB STEEL STRUCTURE.
 - 5 ROUTE SATELLITE RADIO ANTENNA CABLE FROM PASSENGER SEAT PEDESTAL UP A-PILLAR TO ROOF CAP.
 - 4 SEE WIRING INSTL-CHASSIS FOR ADDITIONAL INFORMATION.
 - 3 MOUNT ANTENNA SUCH THAT BASE IS SQUARE W/REAR OF ROOF CAP & CENTER HOLE OF ANTENNA DIRECTLY OVER HOLE IN FIBERGLASS. SEAL HOLE, BASE, AND SCREWS.
 - 2 SEAL AROUND ANTENNA BASE.
 - 1 ROUTE RADIO ANTENNA CABLE FROM DASH RADIO UNDER DASH UP PASSENGER SIDE A-PILLAR TO ROOF CAP.

265 CODES/STANDARDS-CSA/CMVSS
1B1 CODES/STANDARDS USA

FOR ELECTRICAL TORQUE SPECIFICATIONS SEE DWG NO. 128783-01-000

FOR ELECTRICAL CALLOUTS SEE DWG NO. 121339-01-000

DESCRIPTION:	1B1 265	
WIRING INSTL-FRONT END		
SHEET:	ITEM/PART NO:	REV
7 OF 9	000027592 / 31602401000	

8 7 6 5 4 3 2 1 27-Apr-2018

8 7 6 5 4 3 2 1

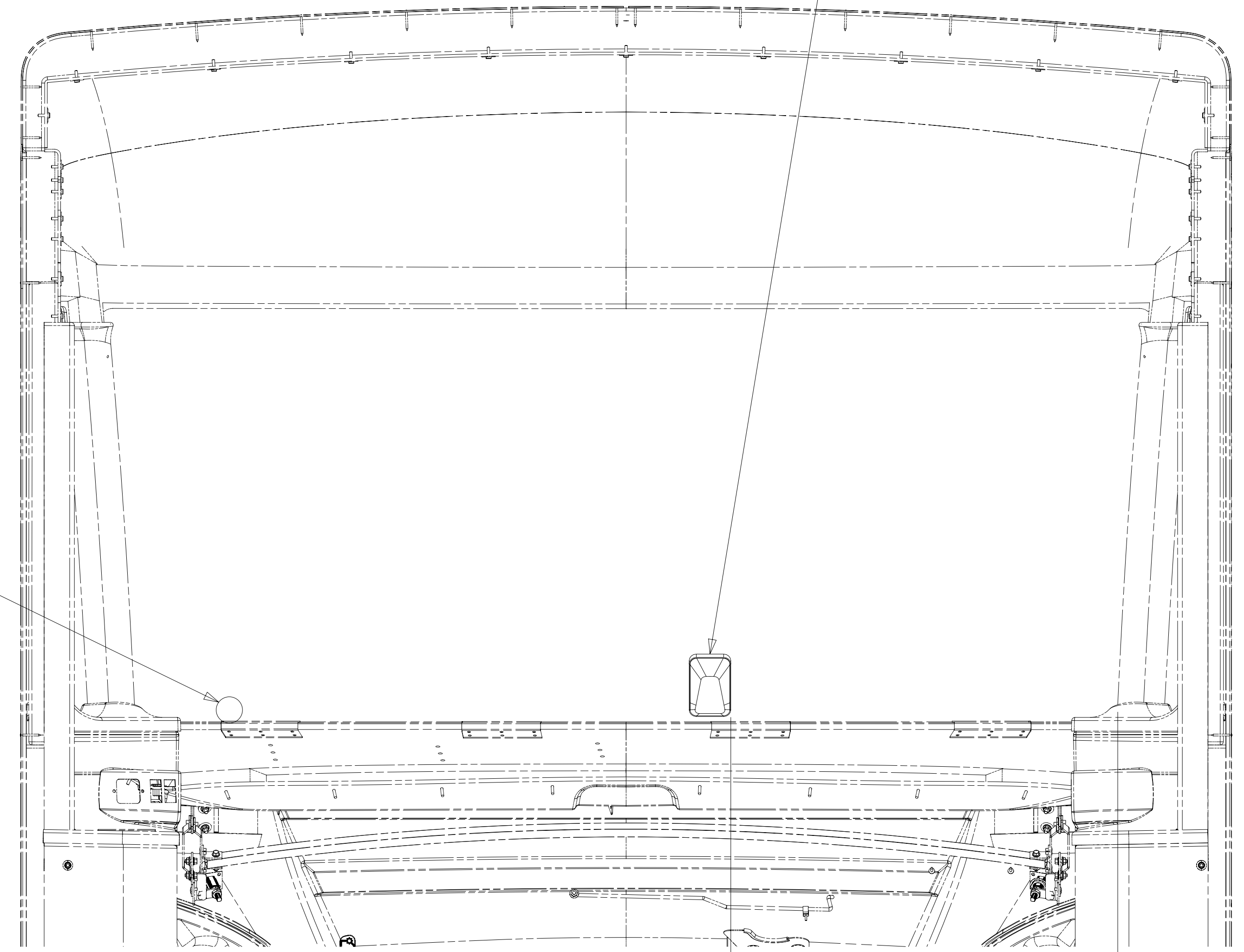
D
C
B
A

D
C
B
A

MOBILEYE 560-H SERIES, PSM
000021180 / 314188-01-000 1 36C

2 MOBILEYE DISPLAY

747 3



- NOTES:
- 3 MEASURE FROM BLACK EDGE OF WINDSHIELD TO SIDE OF CAMERA HOUSING.
 - 2 ATTACH TO CHASSIS SUPPLIED DASH. ROUTE CABLE UNDER PANEL-DASH,CENTER TO CENTER AND CONNECT TO MAIN MOBILEYE HARNESS BEHIND CENTER CLUSTER.
 - 1 ATTACH TO WINDSHIELD AS LOW AS POSSIBLE. ROUTE CABLE BELOW DASH TO LEFT SIDE WITH DISPLAY CABLE. THEN TO CENTER OF DASH TO CONNECT TO WIRE ASM-IP,MAIN.

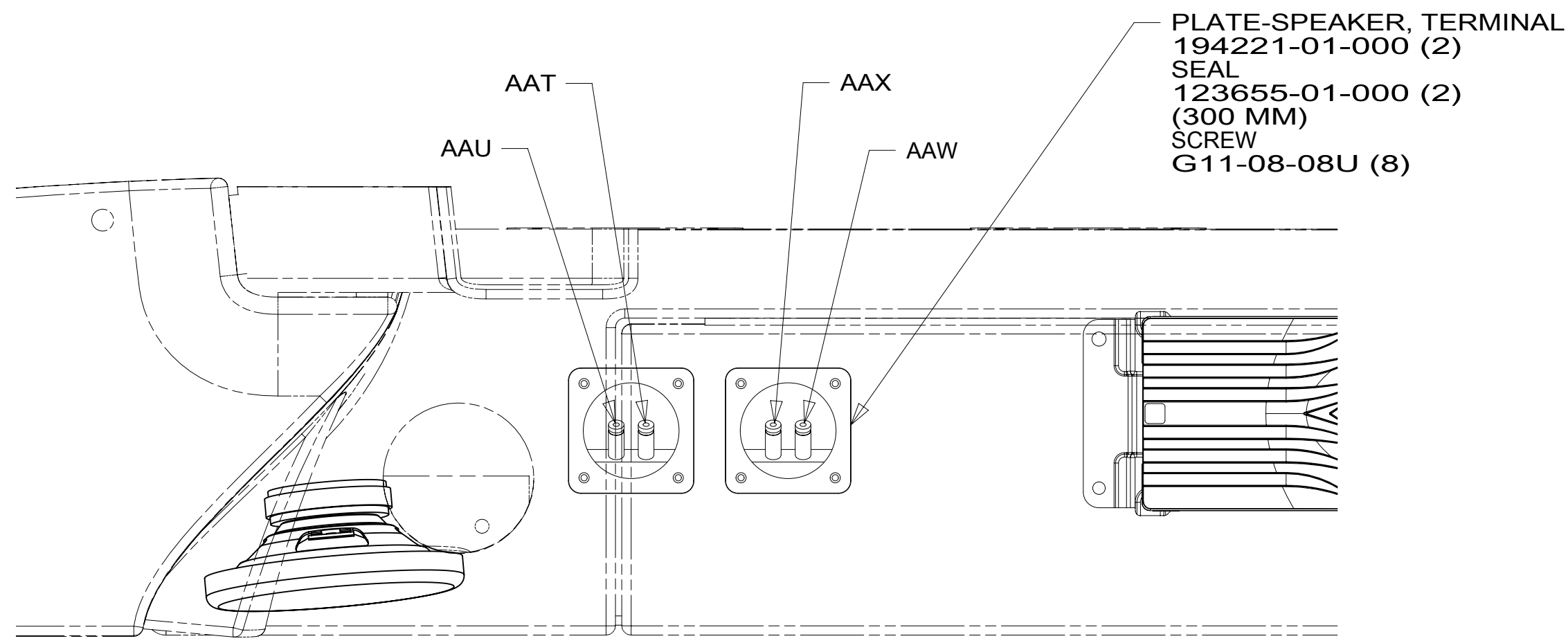
- 36C COLLISION AVOIDANCE SYSTEM
- 265 CODES/STANDARDS-CSA/CMVSS
- 1B1 CODES/STANDARDS USA

FOR ELECTRICAL TORQUE SPECIFICATIONS SEE DWG NO. 128783-01-000

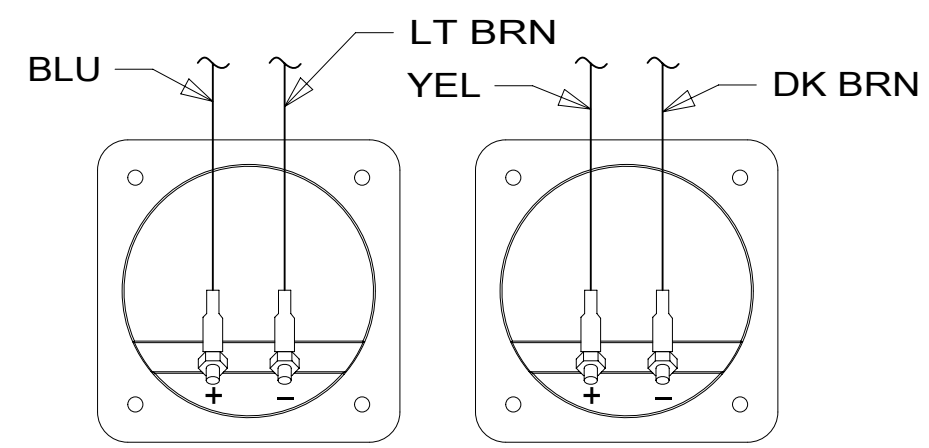
FOR ELECTRICAL CALLOUTS SEE DWG NO. 121339-01-000

DESCRIPTION:		1B1 265
WIRING INSTL-FRONT END		
SHEET:	ITEM/PART NO.:	REV
8 OF 9	000027592 / 31602401000	

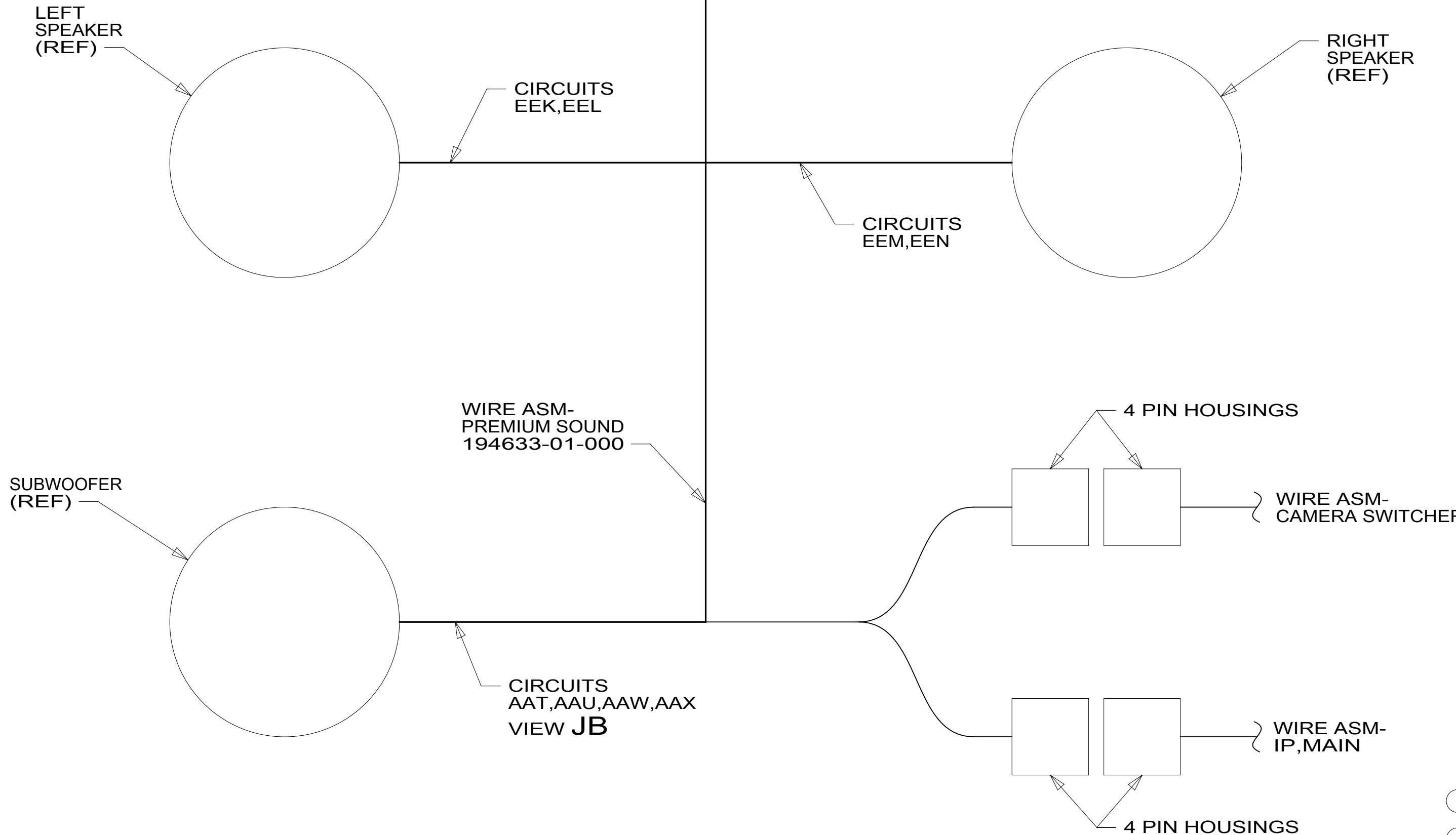
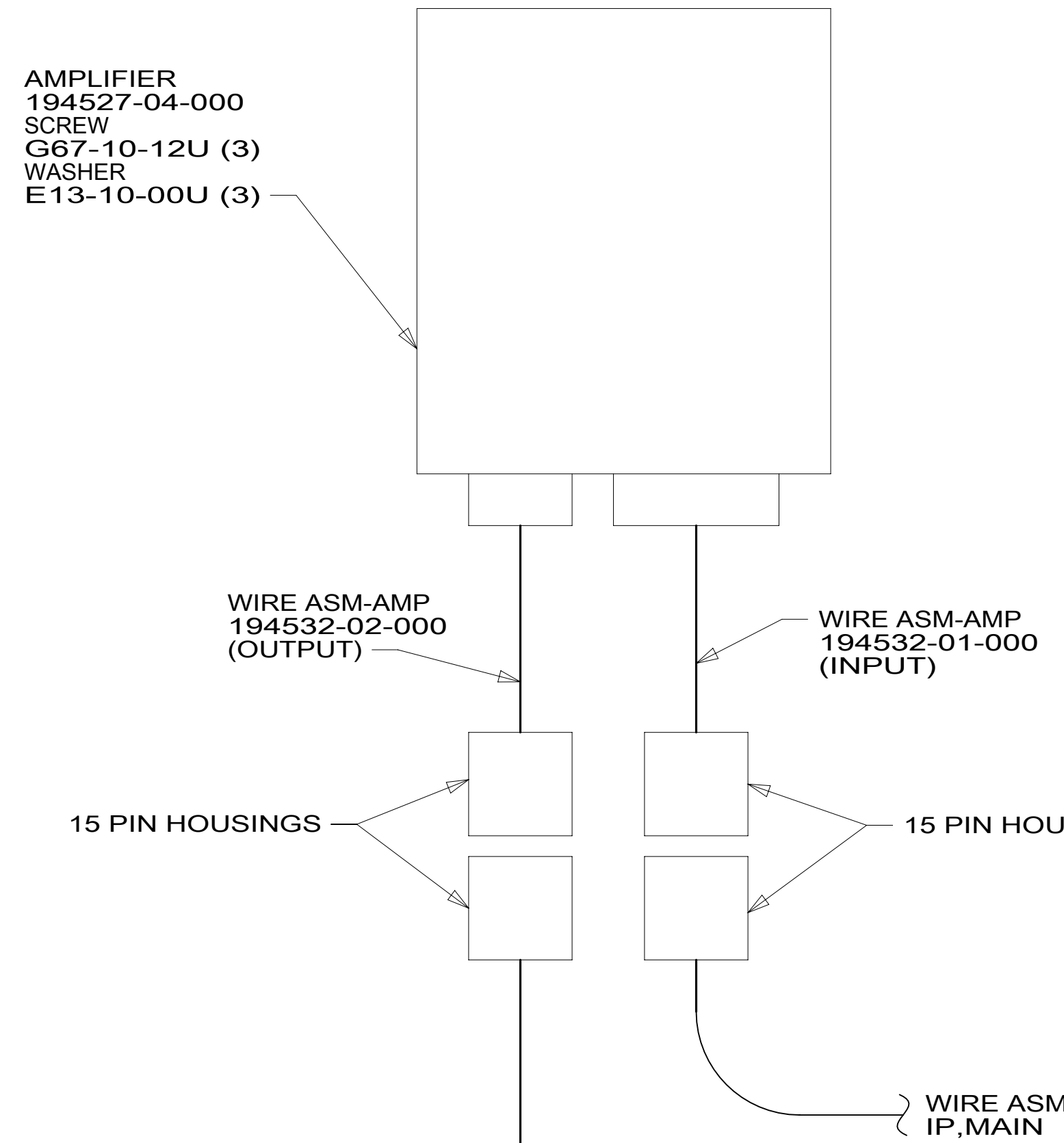
8 7 6 5 4 3 2 1 27-Apr-2018



VIEW JB



DETAIL JC



DETAIL JA

- 57P RADIO SPEAKERS-PREMIUM SOUND
- 265 CODES/STANDARDS-CSA/CMVSS
- 1B1 CODES/STANDARDS USA

FOR ELECTRICAL TORQUE SPECIFICATIONS SEE DWG NO. 128783-01-000

FOR ELECTRICAL CALLOUTS SEE DWG NO. 121339-01-000

DESCRIPTION:		
WIRING INSTL-FRONT END		
SHEET:	ITEM/PART NO.:	REV
9 OF 9	000027592 / 31602401000	