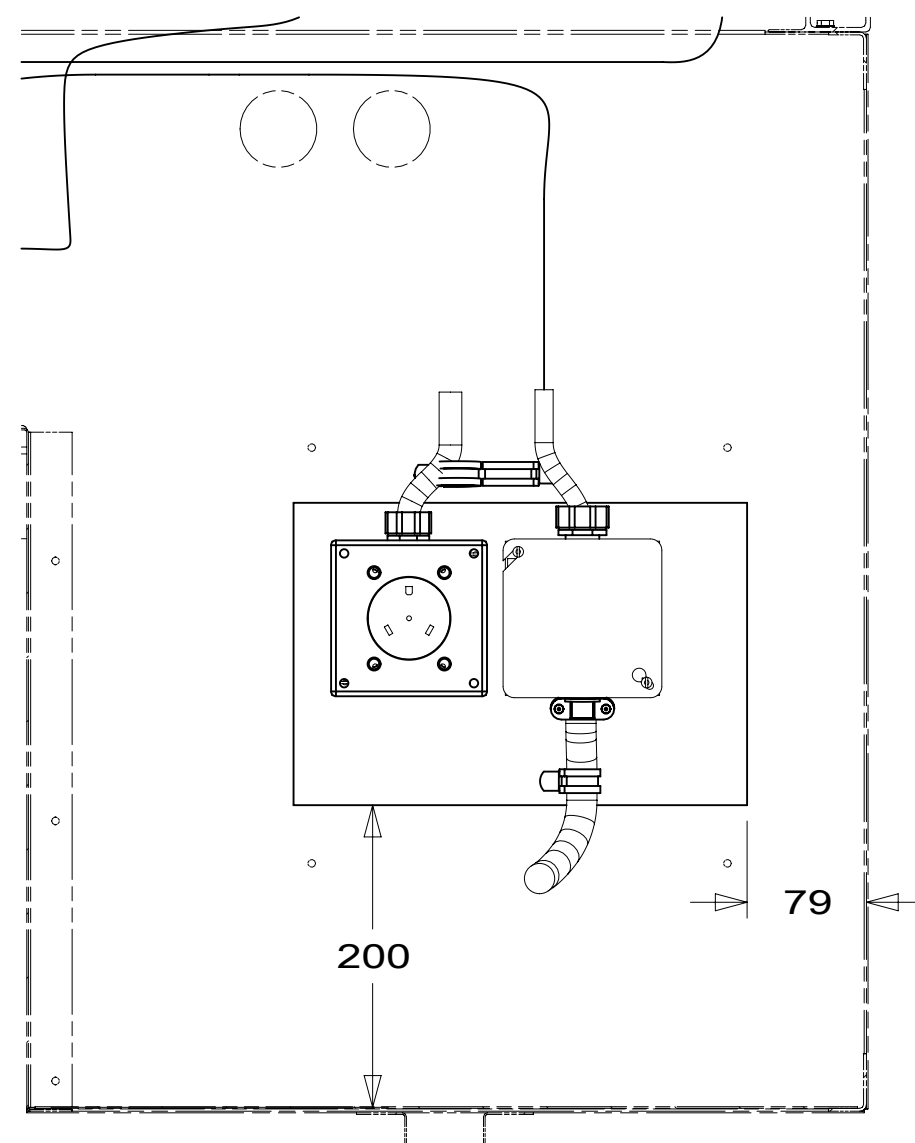
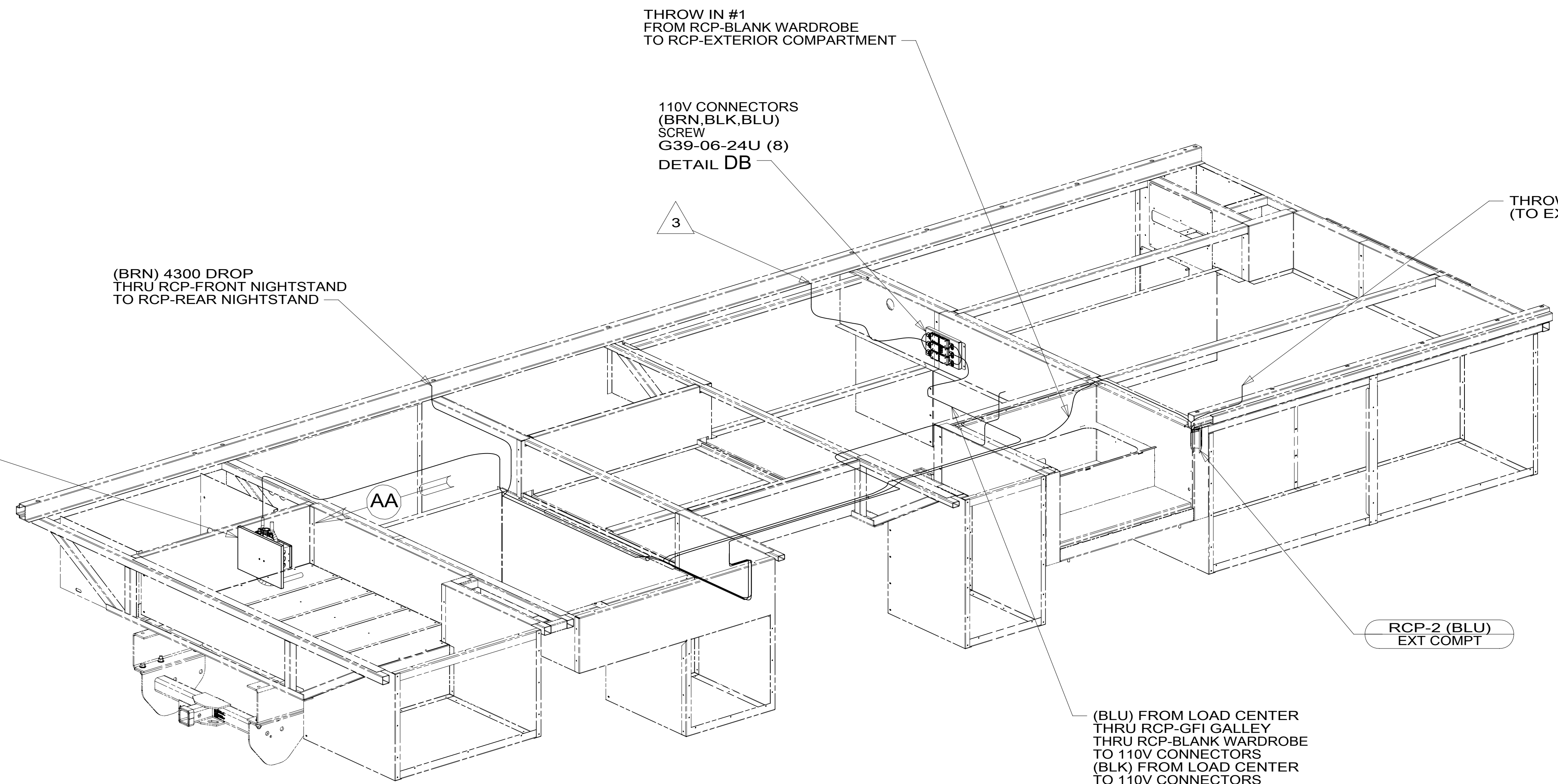


8 7 6 5 4 3 2 1



VIEW AA



(BRN) 4300 DROP THRU RCP-FRONT NIGHTSTAND TO RCP-REAR NIGHTSTAND

2 POWER CORD BOX

AA

110V CONNECTORS (BRN,BLK,BLU) SCREW G39-06-24U (8) DETAIL DB

THROW IN #1 FROM RCP-BLANK WARDROBE TO RCP-EXTERIOR COMPARTMENT

THROW IN WIRE #4 (TO EXT ENT CTR)

RCP-2 (BLU) EXT COMPT

(BLU) FROM LOAD CENTER THRU RCP-GFI GALLEY THRU RCP-BLANK WARDROBE TO 110V CONNECTORS (BLK) FROM LOAD CENTER TO 110V CONNECTORS THROW IN #3 (BRN) FROM RCP-BLANK WARDROBE TO 110V CONNECTORS

1DF EXT TV ENTERTAINMENT CENTER

12D ELECTRICAL SYSTEM 30 AMP

265 CODES/STANDARDS-CSA/CMVSS

1B1 CODES/STANDARDS USA

1B1 265



| | | | |
|--|--------|-----------------------------------|-------------|
| DSNR: | | ALL DIMENSIONS ARE IN MILLIMETERS | |
| DFFR: | | MATERIAL: | |
| UNSPECIFIED TOLERANCES: | | | |
| WHOLE DIM (X) | : 3 | | |
| ONE-PLACE (X.X) | : 1.5 | | |
| TWO-PLACE (X.XX) | : 0.50 | | |
| ANGLE | : 1° | | |
| REFER TO ES0018 FOR FASTENER TIGHTENING GUIDELINES | | WEIGHT: (LBS) | FIRST USED: |
| | | | 17 E27PE |

WIRING INSTL-BODY, 110V

| | | |
|--------|-------------------------|------|
| SHEET: | ITEM/PART NO.: | REV: |
| 1 OF 5 | 000027236 / 31590701000 | |

FOR ELECTRICAL TORQUE SPECIFICATIONS SEE DWG NO. 128783-01-000

FOR ELECTRICAL CALLOUTS SEE DWG NO. 121339-01-000

4. AT MINIMUM ALL WIRES TO BE SUPPORTED AND SECURED PER CODE REQUIREMENTS. USE CLAMP 10495 OR 10497 OR WIRE TIE 8343 OR 108046 AND SCREW G67-XX-XXX OR G56-XX-XXX AS APPROPRIATE FOR INSTALLATION.

3 WIRE ROUTED THROUGH FLOOR IN THIS AREA.

2 SEE LOAD CENTER/ATS FOR ADDITIONAL INFORMATION.

1. WIRES ROUTED UNDER FLOOR.

NOTES:

8 7 6 5 4 3 2 1

D

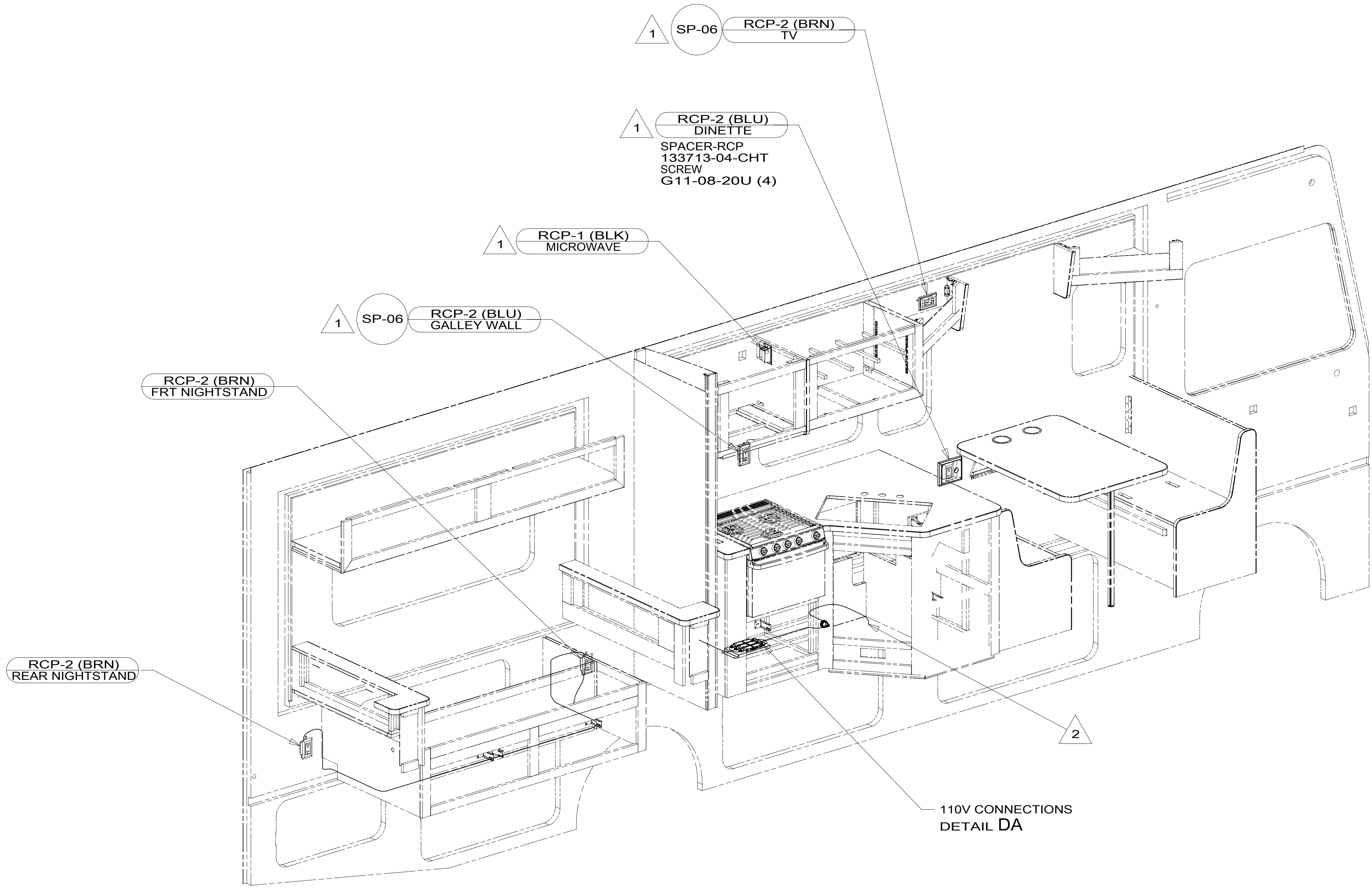
C

B

A

8 7 6 5 4 3 2 1

D
C
B
A



3. AT MINIMUM ALL WIRES TO BE SUPPORTED AND SECURED PER CODE REQUIREMENTS. USE CLAMP 10495 OR 10497 OR WIRE TIE 8343 OR 108046 AND SCREW G67-XX-XXX OR G56-XX-XXX AS APPROPRIATE FOR INSTALLATION.

- 2 WIRE ROUTED THRU FLOOR IN THIS AREA.
- 1 WIRE ROUTED IN SIDEWALL.

NOTES:

265 CODES/STANDARDS-CSA/CMVSS
1B1 CODES/STANDARDS USA

FOR ELECTRICAL TORQUE SPECIFICATIONS SEE DWG NO. 128783-01-000

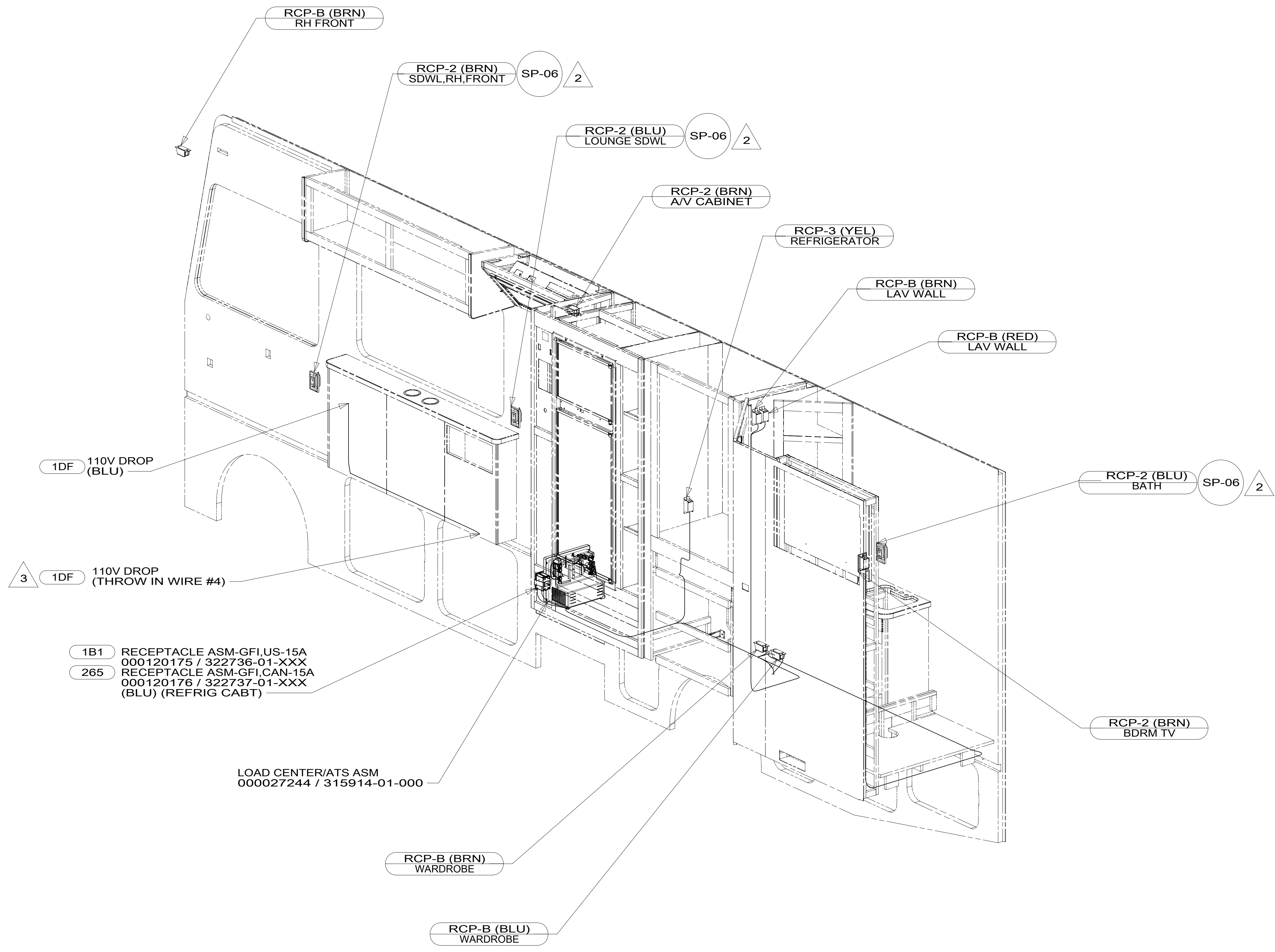
FOR ELECTRICAL CALLOUTS SEE DWG NO. 121339-01-000

| | |
|--------------------------------|-------------------------|
| DESCRIPTION: | |
| WIRING INSTL-BODY, 110V | |
| SHEET: | ITEM/PART NO: |
| 2 OF 5 | 000027236 / 31590701000 |
| REV | |

8 7 6 5 4 3 2 1 02-Jun-2017

8 7 6 5 4 3 2 1

D
C
B
A



- 3 ROUTE WIRE UNDER FLOOR TO THE RCP BLANK BY THE LOAD CENTER.
- 2 WIRE ROUTED IN SIDEWALL.
1. AT MINIMUM ALL WIRES TO BE SUPPORTED AND SECURED PER CODE REQUIREMENTS. USE CLAMP 10495 OR 10497 OR WIRE TIE 8343 OR 108046 AND SCREW G67-XX-XXX OR G56-XX-XXX AS APPROPRIATE FOR INSTALLATION.

NOTES:

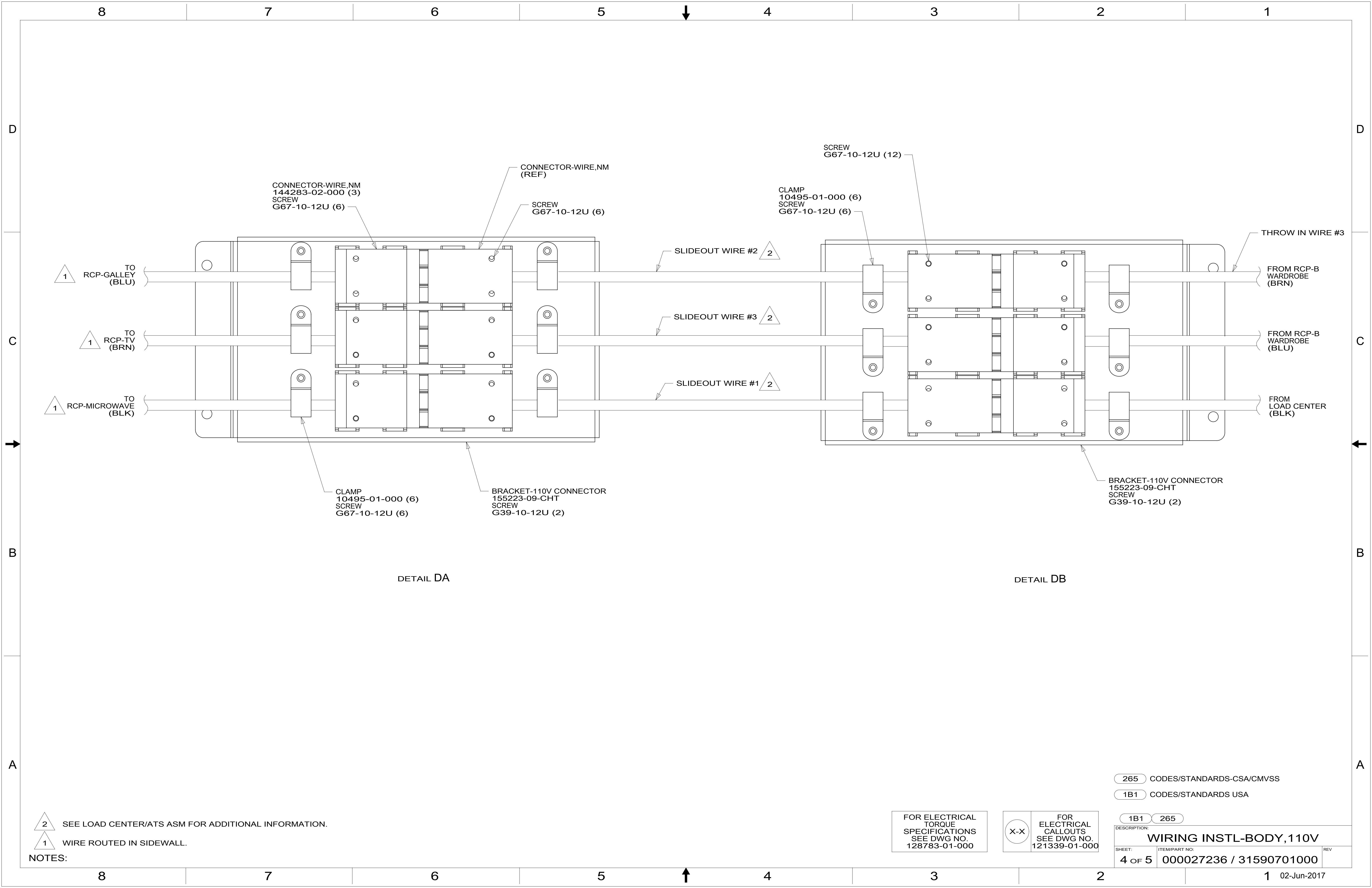
- 1DF EXT TV ENTERTAINMENT CENTER
- 265 CODES/STANDARDS-CSA/CMVSS
- 1B1 CODES/STANDARDS USA

FOR ELECTRICAL TORQUE SPECIFICATIONS SEE DWG NO. 128783-01-000

FOR ELECTRICAL CALLOUTS SEE DWG NO. 121339-01-000

| | |
|-------------------------|-------------------------|
| DESCRIPTION: | |
| 1B1 265 | |
| WIRING INSTL-BODY, 110V | |
| SHEET: | ITEM/PART NO. REV |
| 3 OF 5 | 000027236 / 31590701000 |

8 7 6 5 4 3 2 1 02-Jun-2017



CONNECTOR-WIRE,NM
144283-02-000 (3)
SCREW
G67-10-12U (6)

CONNECTOR-WIRE,NM
(REF)

SCREW
G67-10-12U (6)

CLAMP
10495-01-000 (6)
SCREW
G67-10-12U (6)

SCREW
G67-10-12U (12)

THROW IN WIRE #3

FROM RCP-B
WARDROBE
(BRN)

FROM RCP-B
WARDROBE
(BLU)

FROM LOAD CENTER
(BLK)

1 TO
RCP-GALLEY
(BLU)

1 TO
RCP-TV
(BRN)

1 TO
RCP-MICROWAVE
(BLK)

SLIDEOUT WIRE #2 2

SLIDEOUT WIRE #3 2

SLIDEOUT WIRE #1 2

CLAMP
10495-01-000 (6)
SCREW
G67-10-12U (6)

BRACKET-110V CONNECTOR
155223-09-CHT
SCREW
G39-10-12U (2)

BRACKET-110V CONNECTOR
155223-09-CHT
SCREW
G39-10-12U (2)

DETAIL DA

DETAIL DB

2 SEE LOAD CENTER/ATS ASM FOR ADDITIONAL INFORMATION.
1 WIRE ROUTED IN SIDEWALL.

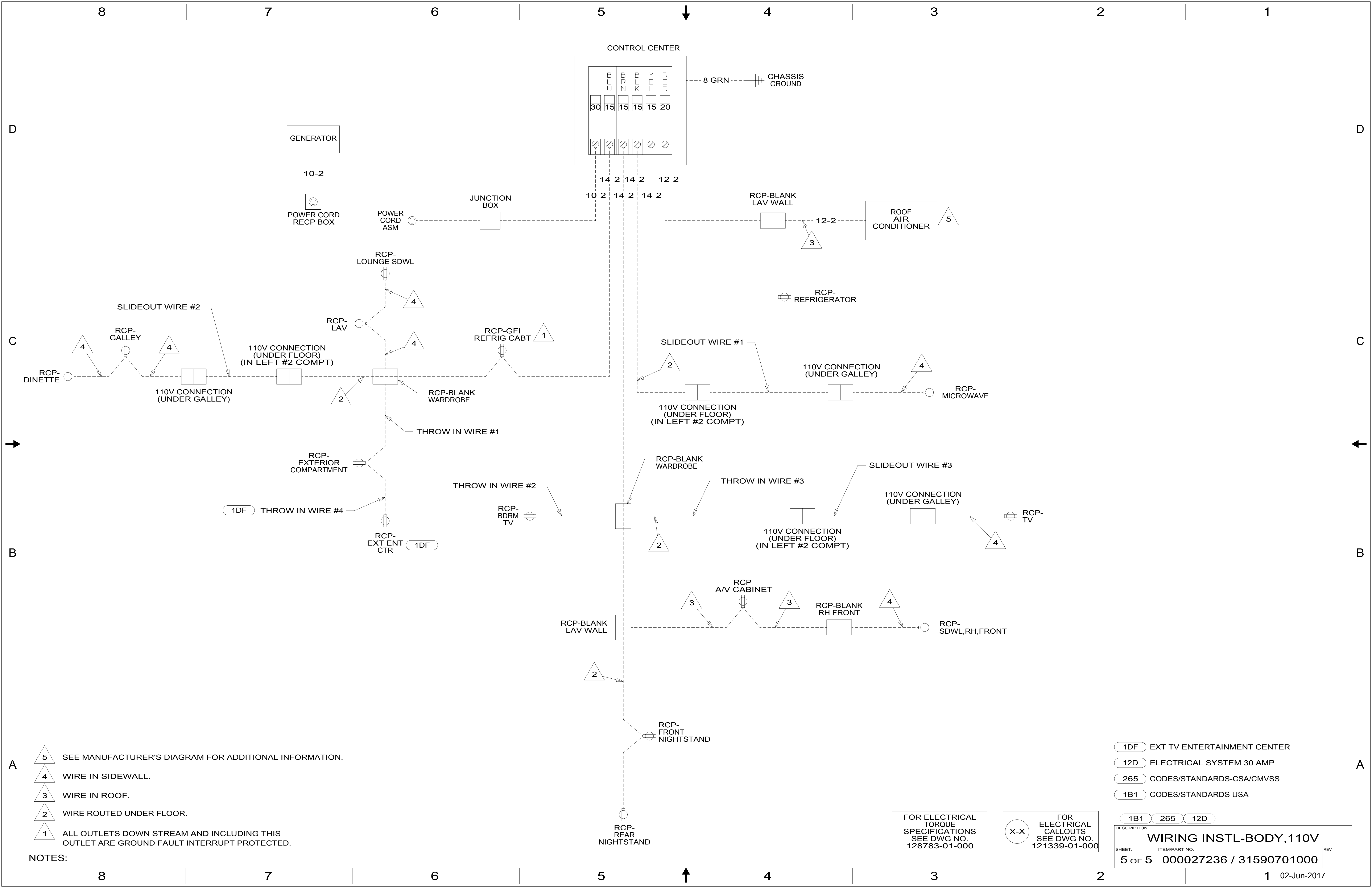
NOTES:

FOR ELECTRICAL
TORQUE
SPECIFICATIONS
SEE DWG NO.
128783-01-000

FOR ELECTRICAL
CALLOUTS
SEE DWG NO.
121339-01-000

265 CODES/STANDARDS-CSA/CMVSS
1B1 CODES/STANDARDS USA

| | |
|--------------------------------|-------------------------|
| DESCRIPTION: | |
| 1B1 265 | |
| WIRING INSTL-BODY, 110V | |
| SHEET: | ITEM/PART NO: |
| 4 OF 5 | 000027236 / 31590701000 |
| REV | |



- NOTES:
- 5 SEE MANUFACTURER'S DIAGRAM FOR ADDITIONAL INFORMATION.
 - 4 WIRE IN SIDEWALL.
 - 3 WIRE IN ROOF.
 - 2 WIRE ROUTED UNDER FLOOR.
 - 1 ALL OUTLETS DOWN STREAM AND INCLUDING THIS OUTLET ARE GROUND FAULT INTERRUPT PROTECTED.

- 1DF EXT TV ENTERTAINMENT CENTER
- 12D ELECTRICAL SYSTEM 30 AMP
- 265 CODES/STANDARDS-CSA/CMVSS
- 1B1 CODES/STANDARDS USA

FOR ELECTRICAL TORQUE SPECIFICATIONS SEE DWG NO. 128783-01-000

FOR ELECTRICAL CALLOUTS SEE DWG NO. 121339-01-000

| | | |
|--------------------------------|-------------------------|-----|
| DESCRIPTION: | 1B1 265 12D | |
| WIRING INSTL-BODY, 110V | | |
| SHEET: | ITEM/PART NO.: | REV |
| 5 OF 5 | 000027236 / 31590701000 | |