

- 9 PREP THE SURFACE PER MANUFACTURERS INSTRUCTIONS, THEN APPLY ADHESIVE 067788-04-000 (0.10) ON PREPARED AREA BEFORE APPLYING THE HEADING PAD PER MANUFACTURERS INSTRUCTIONS.
- 8 FOLLOW SEWAGE MACERATOR PUMP WINTERIZATION PROCEDURE. EACH PUMP REQUIRES TWO GALLONS OF RV ANTIFREEZE 182955-01-000.
- 7 SECURE VENT PIPE TO FLOOR WITH CLAMP 062401-02-000 (2), SCREW 000G67-10-12U (2), BRACKET 136878-01-CHT (2).
- 6 VENT PIPE MUST PROJECT 51 MIN AND 64 MAX ABOVE ROOF FOR PROPER FIT AND FUNCTION. ADD S-1 (116666-01-CHT SEAL-VENT PIPE) AROUND PIPE ON ROOF BEFORE VENT CAP IS INSTALLED.
- 5. SEAL AROUND SHOWER WITH SILICONE.
- 4. SECURE DRAINAGE PIPES TO CABINET USING WIRE TIE 108046-02-000, AND SCREW 000G67-10-12U AT INTERVALS OF NOT MORE THAN 4 FEET APART.
- 3. ALL PIPE AND FITTINGS TO BE ASSEMBLED WITH SOLVENT 004020-01-000 (USA), 004020-02-000 (CAN)
- 2. SLOPE OF TRAP ARM MUST BE 6 PER 305 mm.
- 1. SLOPE OF HORIZONTAL PIPING TO BE MINIMUM OF 3 PER 305 mm.

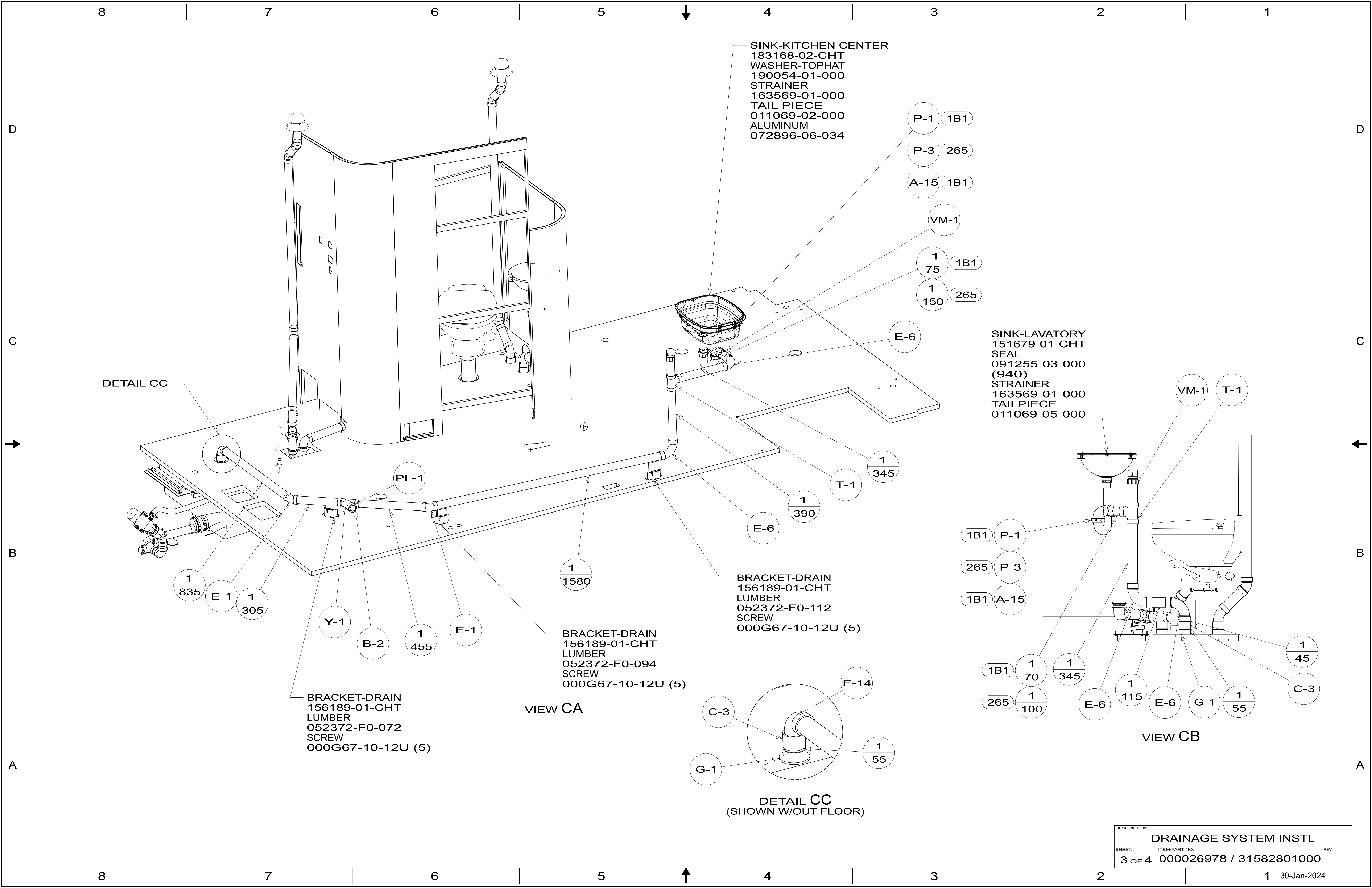
NOTES:

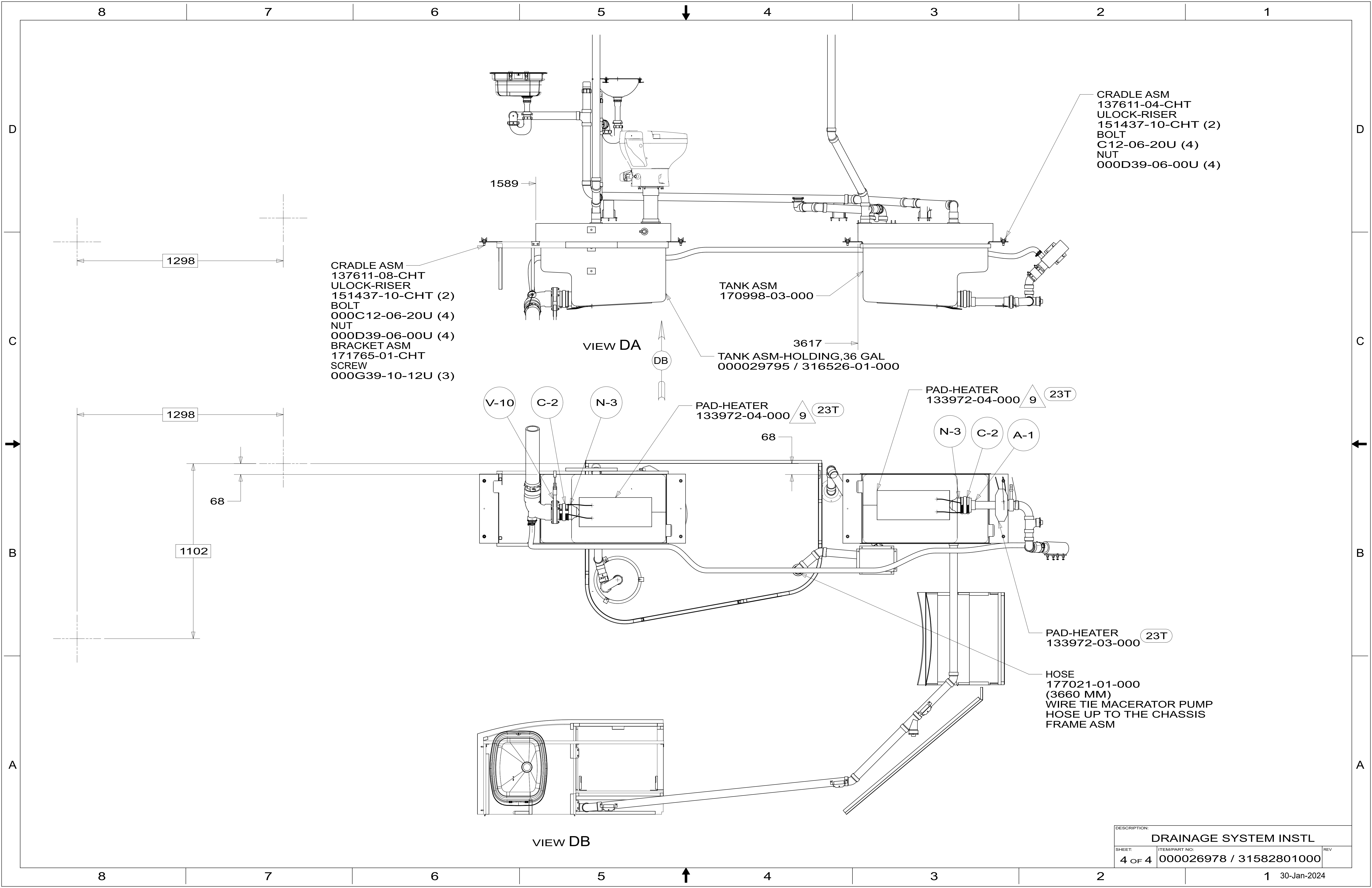
- (23T) DRAINAGE SYSTEM-HEATED
- (265) CODES/STANDARDS-CSA/CMVSS
- (1B1) CODES/STANDARDS USA



DSNR:		ALL DIMENSIONS ARE IN MILLIMETERS	
DFTR:		MATERIAL:	
UNSPECIFIED TOLERANCES:			
WHOLE DIM (X)	3		
ONE-PLACE (X.X)	1.5		
TWO-PLACE (X.XX)	0.50		
ANGLE	1°		
REFER TO ES0018 FOR FASTENER TIGHTENING GUIDELINES		WEIGHT: (LBS)	FIRST USED: (REF)
			17 H25T
DRAINAGE SYSTEM INSTL			
SHEET:	ITEM/PART NO.:	REV	
1 OF 4	000026978 / 31582801000		

X-X
FOR DRAINAGE CALLOUTS SEE DWG NO. 303370-01-000





CRADLE ASM
 137611-08-CHT
 ULOCK-RISER
 151437-10-CHT (2)
 BOLT
 000C12-06-20U (4)
 NUT
 000D39-06-00U (4)
 BRACKET ASM
 171765-01-CHT
 SCREW
 000G39-10-12U (3)

CRADLE ASM
 137611-04-CHT
 ULOCK-RISER
 151437-10-CHT (2)
 BOLT
 C12-06-20U (4)
 NUT
 000D39-06-00U (4)

TANK ASM
 170998-03-000

TANK ASM-HOLDING,36 GAL
 000029795 / 316526-01-000

PAD-HEATER
 133972-04-000 9 23T

PAD-HEATER
 133972-04-000 9 23T

PAD-HEATER
 133972-03-000 23T

HOSE
 177021-01-000
 (3660 MM)
 WIRE TIE MACERATOR PUMP
 HOSE UP TO THE CHASSIS
 FRAME ASM

VIEW DB

VIEW DA

DESCRIPTION:		
DRAINAGE SYSTEM INSTL		
SHEET:	ITEM/PART NO.:	REV
4 OF 4	000026978 / 31582801000	