

- NOTES:**
- 11 INSTALL NUT SO THAT IT IS FLUSH WITH TOP OF THE EXTENDER-SHAFT.
  - 10 COIL AND SECURE WIRES TO CHASSIS WITH (60T)
  - 9 REMOVE AND DISCARD SUPPLIED PLASTIC COVER INSTALLED ON PASSENGER SEAT PEDESTAL
  - 8 LOCATED BELOW PASSENGER SEAT.
  - 7 12 PIN HOUSING TO BE ROUTED ABOVE FLOOR TO CONTROL PANEL.
  - 6 ROUTE GENERATOR CONTROL CABLE ALONG WIRE ASM-CHASSIS THROUGH FLOOR IN THIS AREA.
  - 5 CABLE SUPPLIED WITH DIESEL GENERATOR.
  - 4 COIL AND SECURE WIRES TO BEHIND DASH PANEL WITH (60T)
  - 3 CUT WIRE TIE AROUND SPRINTER SEAL, ROUTE THE CHASSIS WIRING THROUGH HOLE AND WIRE TIE SEAL WITH WIRE TIE 8343-04-000.
  - 2 10 PIN HOUSING CONNECTS TO GENERATOR
  - 1. SECURE CONDUIT 41953, TAB AS REQUIRED, OVER ALL WIRES IN CONTACT WITH SHARP EDGES.

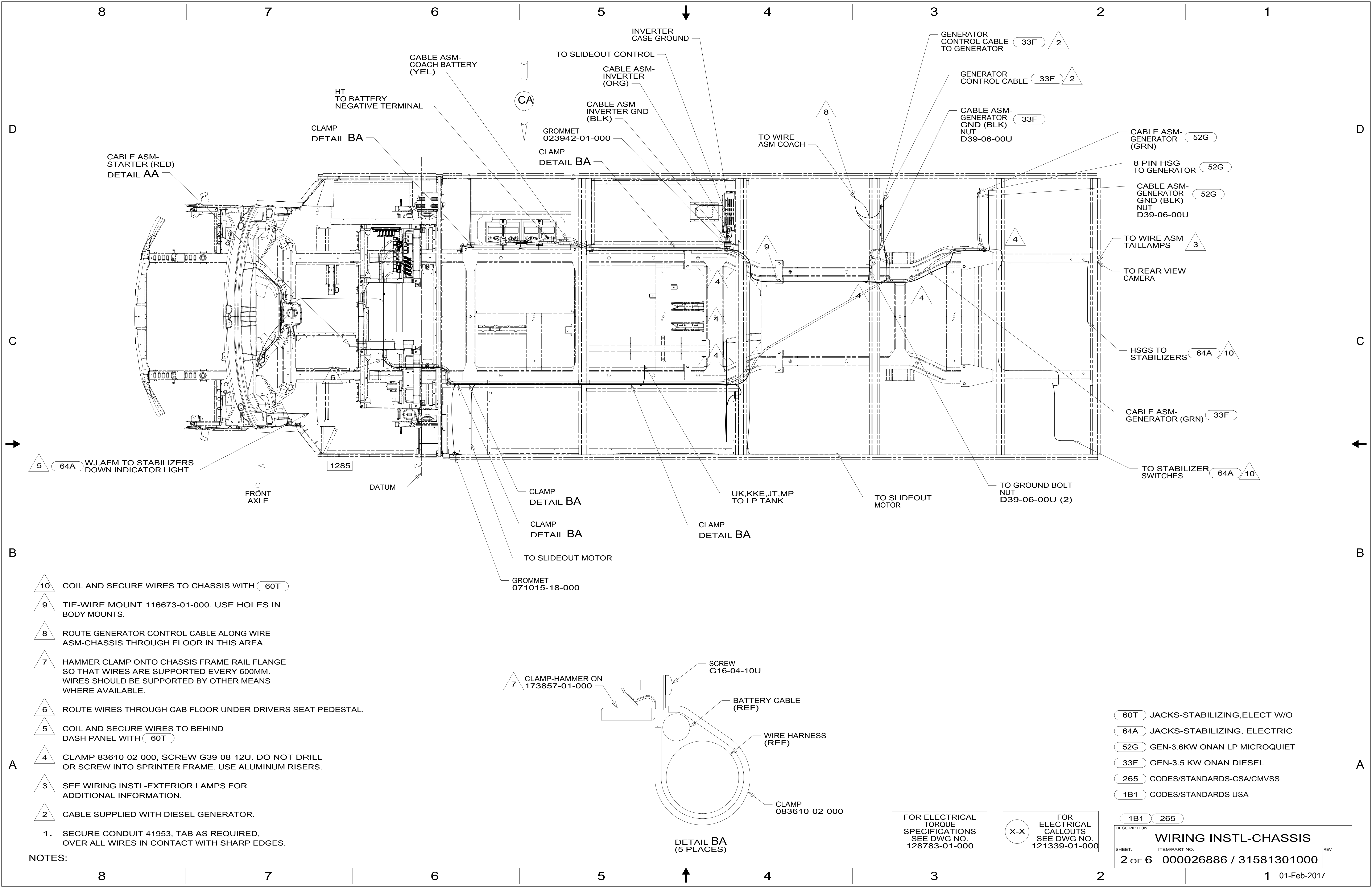
- (60T) JACKS-STABILIZING,ELECT W/O
- (64A) JACKS-STABILIZING, ELECTRIC
- (52G) GEN-3.6KW ONAN LP MICROQUIET
- (33F) GEN-3.5 KW ONAN DIESEL
- (265) CODES/STANDARDS-CSA/CMVSS
- (1B1) CODES/STANDARDS USA

**WINNEBAGO**  
COPYRIGHT 2016 WINNEBAGO INDUSTRIES, INC.

DSNR:		ALL DIMENSIONS ARE IN MILLIMETERS	
DIFFR:			
UNSPECIFIED TOLERANCES:	MATERIAL:		
WHOLE DIM (X) :		3	
ONE-PLACE (X.X) :		1.5	
TWO-PLACE (X.XX) :		0.50	
ANGLE :		1°	
REFER TO ES0018 FOR FASTENER TIGHTENING GUIDELINES		WEIGHT: (LBS)	FIRST USED:
			<b>17 H25P</b>
<b>DESCRIPTION:</b>			
<b>WIRING INSTL-CHASSIS</b>			
SHEET:	ITEM/PART NO.:	REV:	
<b>1 OF 6</b>	<b>000026886 / 31581301000</b>		
REF:		1 01-Feb-2017	

FOR ELECTRICAL TORQUE SPECIFICATIONS SEE DWG NO. 128783-01-000

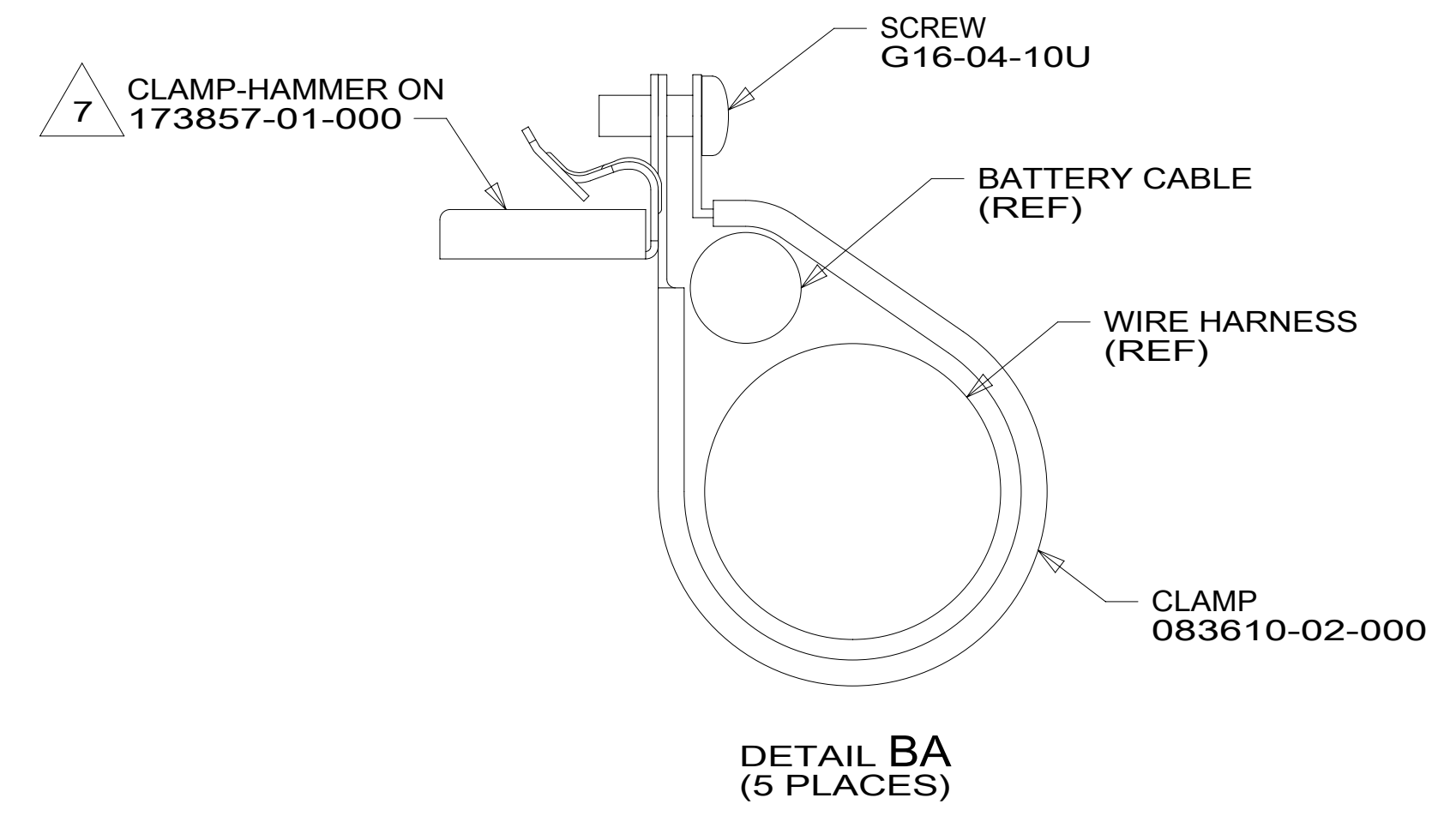
FOR ELECTRICAL CALLOUTS SEE DWG NO. 121339-01-000



- 10 COIL AND SECURE WIRES TO CHASSIS WITH (60T)
- 9 TIE-WIRE MOUNT 116673-01-000. USE HOLES IN BODY MOUNTS.
- 8 ROUTE GENERATOR CONTROL CABLE ALONG WIRE ASM-CHASSIS THROUGH FLOOR IN THIS AREA.
- 7 HAMMER CLAMP ONTO CHASSIS FRAME RAIL FLANGE SO THAT WIRES ARE SUPPORTED EVERY 600MM. WIRES SHOULD BE SUPPORTED BY OTHER MEANS WHERE AVAILABLE.
- 6 ROUTE WIRES THROUGH CAB FLOOR UNDER DRIVERS SEAT PEDESTAL.
- 5 COIL AND SECURE WIRES TO BEHIND DASH PANEL WITH (60T)
- 4 CLAMP 83610-02-000, SCREW G39-08-12U. DO NOT DRILL OR SCREW INTO SPRINTER FRAME. USE ALUMINUM RISERS.
- 3 SEE WIRING INSTL-EXTERIOR LAMPS FOR ADDITIONAL INFORMATION.
- 2 CABLE SUPPLIED WITH DIESEL GENERATOR.

1. SECURE CONDUIT 41953, TAB AS REQUIRED, OVER ALL WIRES IN CONTACT WITH SHARP EDGES.

NOTES:



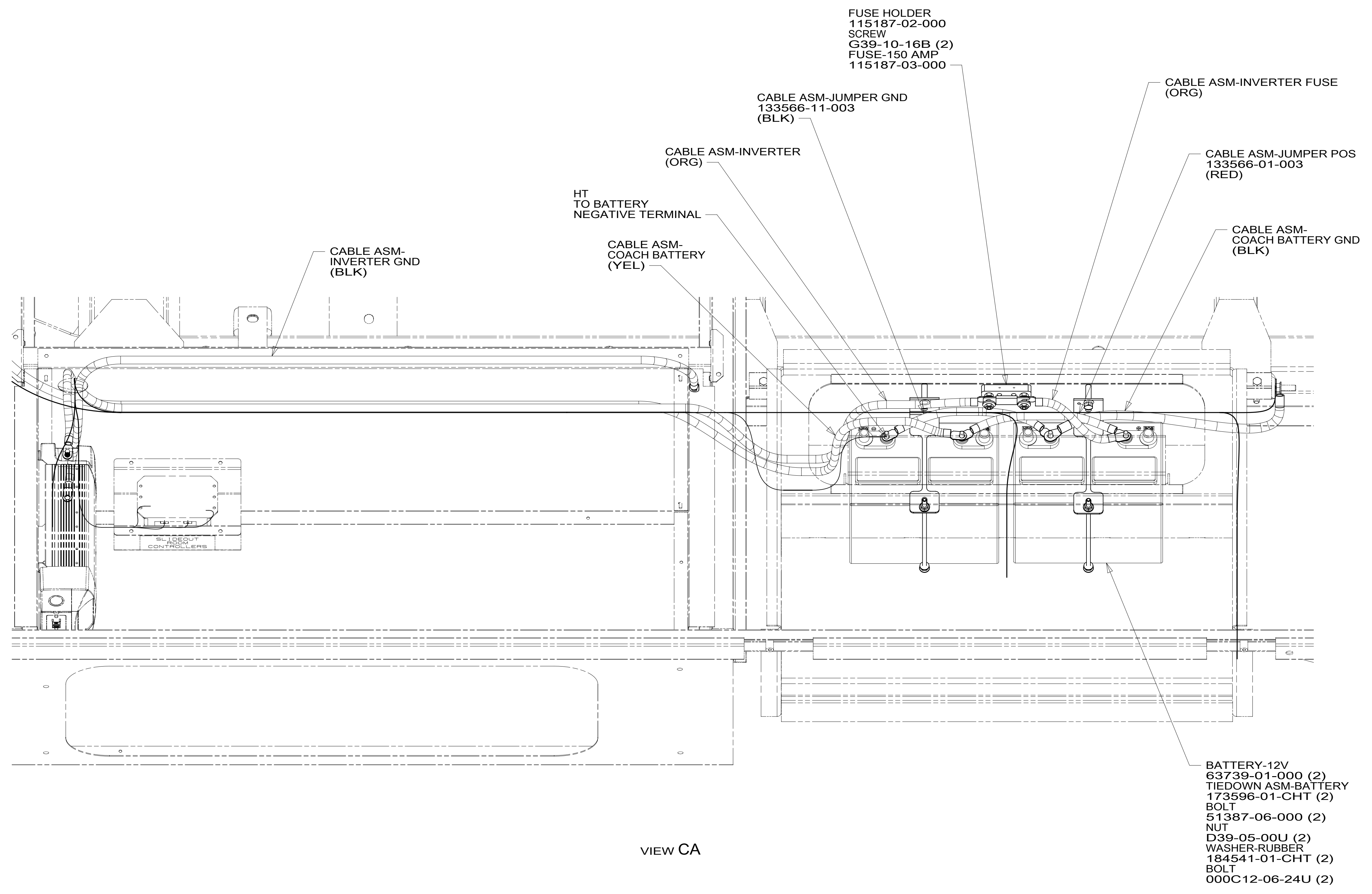
FOR ELECTRICAL TORQUE SPECIFICATIONS SEE DWG NO. 128783-01-000

FOR ELECTRICAL CALLOUTS SEE DWG NO. 121339-01-000

- (60T) JACKS-STABILIZING,ELECT W/O
- (64A) JACKS-STABILIZING, ELECTRIC
- (52G) GEN-3.6KW ONAN LP MICROQUIET
- (33F) GEN-3.5 KW ONAN DIESEL
- (265) CODES/STANDARDS-CSA/CMVSS
- (1B1) CODES/STANDARDS USA

DESCRIPTION:		<b>WIRING INSTL-CHASSIS</b>	
SHEET:	ITEM/PART NO.:	REV	
2 OF 6	000026886 / 31581301000		

	8	7
	CABLE ASM-STARTER (RED)	141415-37-013
	CABLE ASM-COACH BATTERY (YEL)	141415-52-073
	CABLE ASM-COACH BATTERY GND (BLK)	133567-12-009
	CABLE ASM-GENERATOR (GRN)	33F 141416-42-070
D	CABLE ASM-GENERATOR GND (BLK)	33F 133567-12-006
	CABLE ASM-GENERATOR (GRN)	52G 141415-42-075
	CABLE ASM-GENERATOR GND (BLK)	52G 133566-12-017
	CABLE ASM-INVERTER FUSE (ORG)	141415-62-003
	CABLE ASM-INVERTER GND (BLK)	133566-12-011
	CABLE ASM-INVERTER (ORG)	141415-62-023



VIEW CA

- 52G GEN-3.6KW ONAN LP MICROQUIET
- 33F GEN-3.2 KW ONAN DIESEL
- 265 CODES/STANDARDS-CSA/CMVSS
- 1B1 CODES/STANDARDS USA

NOTES:

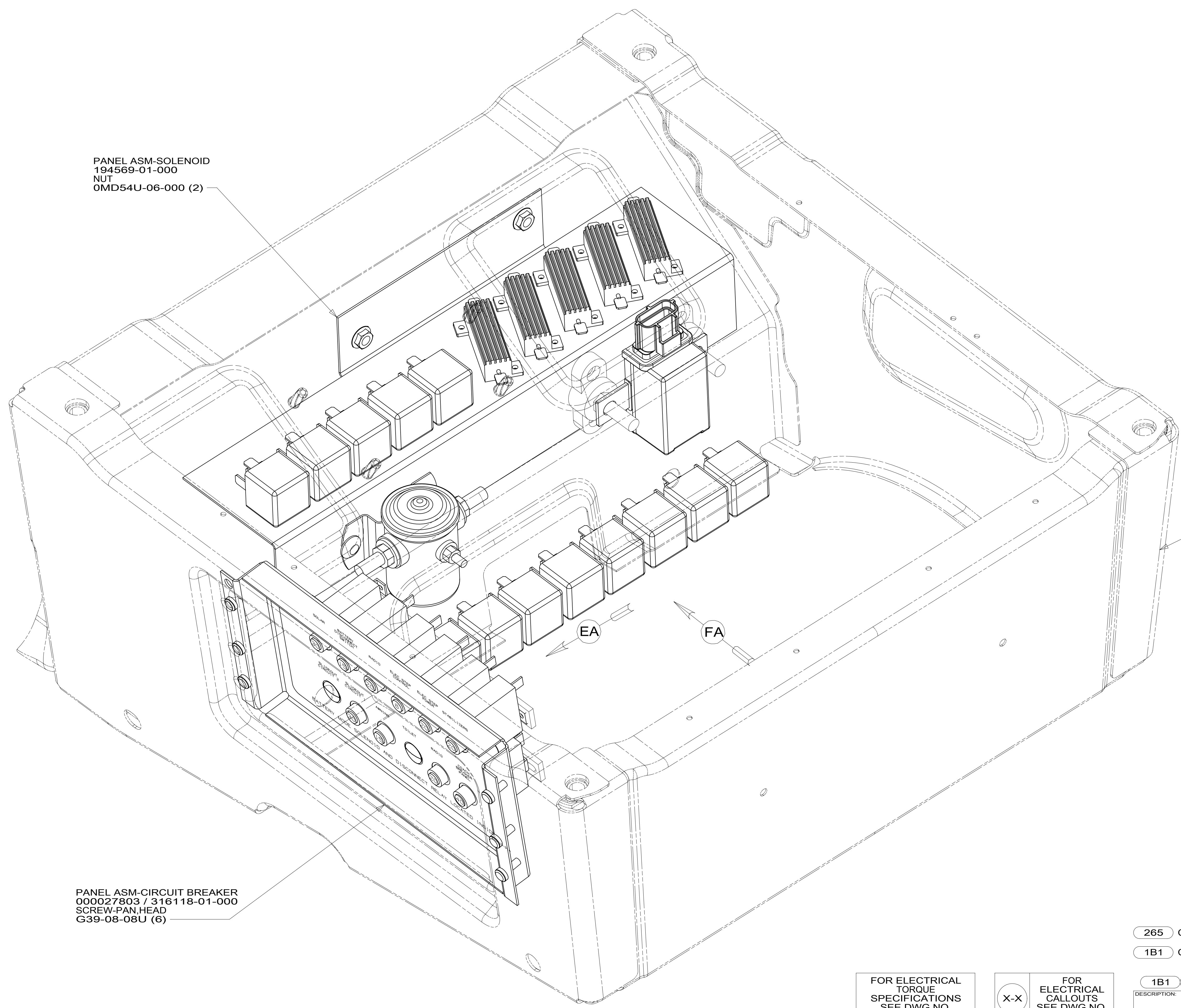
- SEE WIRING INSTL-CHASSIS FOR ADDITIONAL INFORMATION FOR ROUTING CABLES.
- BATTERY CABLES ARE NOT TO BE ROUTED OVER BATTERY FILL CAPS.

FOR ELECTRICAL TORQUE SPECIFICATIONS SEE DWG NO. 128783-01-000	X-X	FOR ELECTRICAL CALLOUTS SEE DWG NO. 121339-01-000
--	-----	---

DESCRIPTION:	1B1 265	
<b>WIRING INSTL-CHASSIS</b>		
SHEET:	ITEM/PART NO:	REV
3 OF 6	000026886 / 31581301000	

8 7 6 5 4 3 2 1

D  
C  
B  
A



PANEL ASM-SOLENOID  
194569-01-000  
NUT  
OMD54U-06-000 (2)

PASSENGER SIDE  
SEAT PEDESTAL  
(REF)

PANEL ASM-CIRCUIT BREAKER  
000027803 / 316118-01-000  
SCREW-PAN HEAD  
G39-08-08U (6)

EA

FA

265 CODES/STANDARDS-CSA/CMVSS  
1B1 CODES/STANDARDS USA

FOR ELECTRICAL  
TORQUE  
SPECIFICATIONS  
SEE DWG NO.  
128783-01-000

FOR  
ELECTRICAL  
CALLOUTS  
SEE DWG NO.  
121339-01-000

DESCRIPTION:	1B1 265	
<b>WIRING INSTL-CHASSIS</b>		
SHEET:	ITEM/PART NO:	REV
4 OF 6	000026886 / 31581301000	

8 7 6 5 4 3 2 1

D  
C  
B  
A

D

D

C

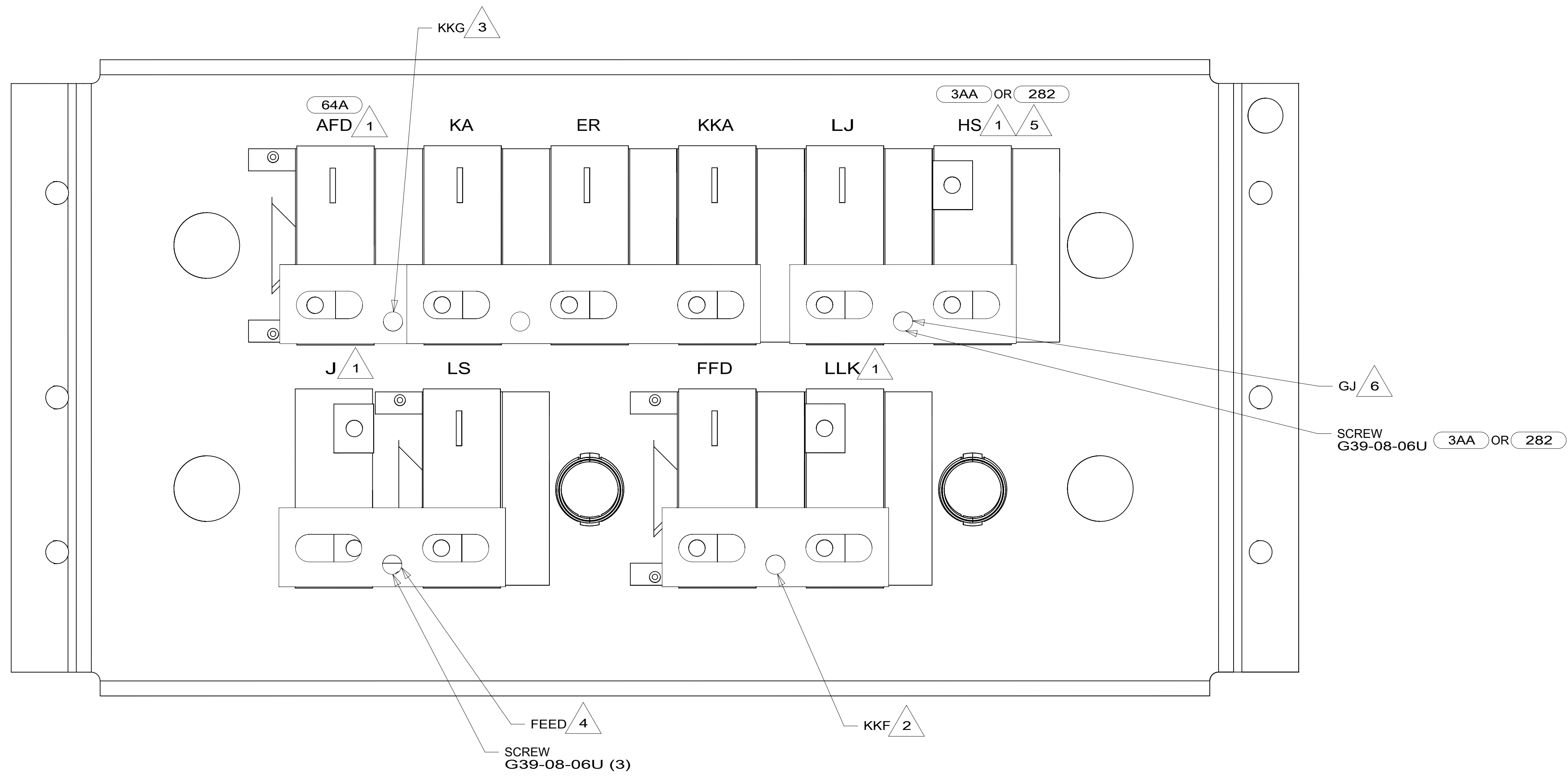
C

B

B

A

A



VIEW EA

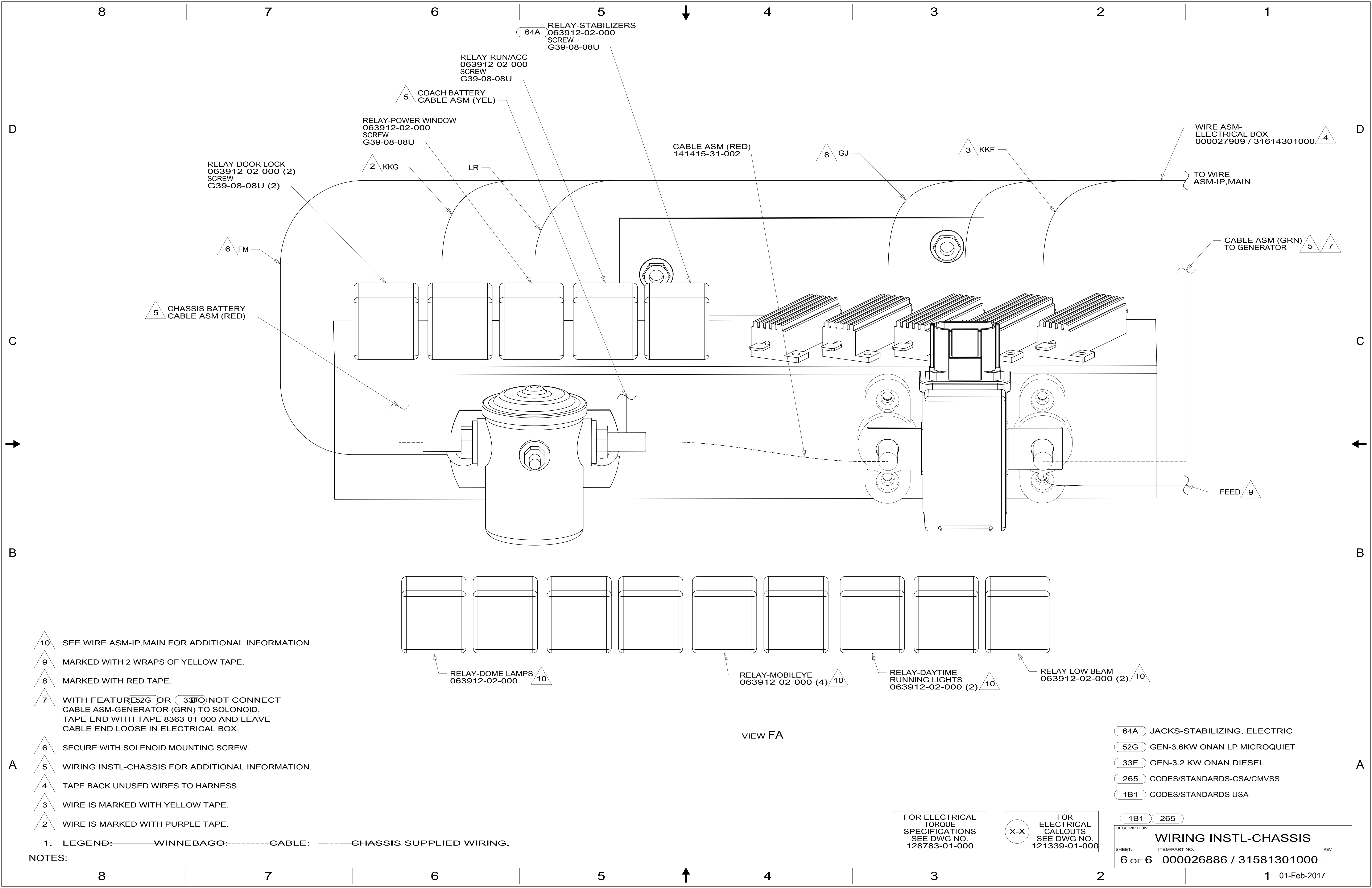
- NOTES:
- 7. TAPE BACK UNUSED WIRES TO HARNESS.
  - 6 MARKED WITH RED TAPE.
  - 5 MARKED WITH WHITE TAPE.
  - 4 MARKED WITH 2 WRAPS OF YELLOW TAPE.
  - 3 MARKED WITH PURPLE TAPE.
  - 2 MARKED WITH YELLOW TAPE.
  - 1 CIRCUIT FROM WIRE ASM-CHASSIS.

- 64A JACKS-STABILIZING, ELECTRIC
- 282 SOLAR PANEL - 100 WATT
- 3AA SOLAR PANEL/BATT CHARGER SYS
- 265 CODES/STANDARDS-CSA/CMVSS
- 1B1 CODES/STANDARDS USA

FOR ELECTRICAL TORQUE SPECIFICATIONS SEE DWG NO. 128783-01-000

FOR ELECTRICAL CALLOUTS SEE DWG NO. 121339-01-000

DESCRIPTION:		1B1 265
<b>WIRING INSTL-CHASSIS</b>		
SHEET:	ITEM/PART NO.:	REV
5 OF 6	000026886 / 31581301000	



- 10 SEE WIRE ASM-IP,MAIN FOR ADDITIONAL INFORMATION.
- 9 MARKED WITH 2 WRAPS OF YELLOW TAPE.
- 8 MARKED WITH RED TAPE.
- 7 WITH FEATURE 52G OR 33F NOT CONNECT CABLE ASM-GENERATOR (GRN) TO SOLENOID. TAPE END WITH TAPE 8363-01-000 AND LEAVE CABLE END LOOSE IN ELECTRICAL BOX.
- 6 SECURE WITH SOLENOID MOUNTING SCREW.
- 5 WIRING INSTL-CHASSIS FOR ADDITIONAL INFORMATION.
- 4 TAPE BACK UNUSED WIRES TO HARNESS.
- 3 WIRE IS MARKED WITH YELLOW TAPE.
- 2 WIRE IS MARKED WITH PURPLE TAPE.

1. LEGEND: — WINNEBAGO: - - - - - CABLE: - - - - - CHASSIS SUPPLIED WIRING.

NOTES:

- 64A JACKS-STABILIZING, ELECTRIC
- 52G GEN-3.6KW ONAN LP MICROQUIET
- 33F GEN-3.2 KW ONAN DIESEL
- 265 CODES/STANDARDS-CSA/CMVSS
- 1B1 CODES/STANDARDS USA

FOR ELECTRICAL TORQUE SPECIFICATIONS SEE DWG NO. 128783-01-000	X-X	FOR ELECTRICAL CALLOUTS SEE DWG NO. 121339-01-000
--	-----	---

DESCRIPTION:	<b>WIRING INSTL-CHASSIS</b>	
SHEET:	6 OF 6	ITEM/PART NO: 000026886 / 31581301000
REV		1 01-Feb-2017