

8

7

6

5



4

3

2

1

RED	1B1	136135-07-051
	265	136136-07-051
YEL	1B1	136131-05-027
	265	136134-05-027
BLK	1B1	136135-06-053
	265	136136-06-053
BRN	1B1	136131-03-057
	265	136134-03-057
BLU	1B1	136131-02-052
	265	136134-02-052
THROW IN WIRE #1	1B1	136131-02-078
	265	136134-02-078
THROW IN WIRE #2	1B1	136131-03-027
	265	136134-03-027
THROW IN WIRE #3	1B1	136131-03-035
	265	136134-03-035
MAIN EXTENSION CABLE ASM	1B1	164957-15-044
	265	164957-16-044
GROUND MAIN		136145-06-016

265 CODES/STANDARDS-CSA/CMVSS

1B1 CODES/STANDARDS USA

1B1 265



COPYRIGHT 2016 WINNEBAGO INDUSTRIES, INC.

DSNR:		ALL DIMENSIONS ARE IN MILLIMETERS	
DIFFR:		MATERIAL:	
UNSPECIFIED TOLERANCES:			
WHOLE DIM (X)	: 3		
ONE-PLACE (X.X)	: 1.5		
TWO-PLACE (X.XX)	: 0.50		
ANGLE	: 1°		

REFER TO ES0018 FOR FASTENER TIGHTENING GUIDELINES

WEIGHT: (LBS) FIRST USED: 17 322R

DESCRIPTION: LOAD CENTER/ATS ASM

SHEET: 1 OF 3 ITEM/PART NO: 000026880 / 31581001000 REF: 1 05-Apr-2017

FOR ELECTRICAL TORQUE SPECIFICATIONS SEE DWG NO. 128783-01-000

FOR ELECTRICAL CALLOUTS SEE DWG NO. 121339-01-000

- 3. SEE WIRING INSTL-BODY,12V FOR ADDITIONAL INFORMATION.
- 2. SECURE WIRES TO BACKSIDE OF LOAD CENTER WITH WIRE TIE 116673-01-000.
- 1. ALL GROUND WIRES TO BE COVERED WITH TUBING 8041-02-000.

NOTES:

8

7

6

5

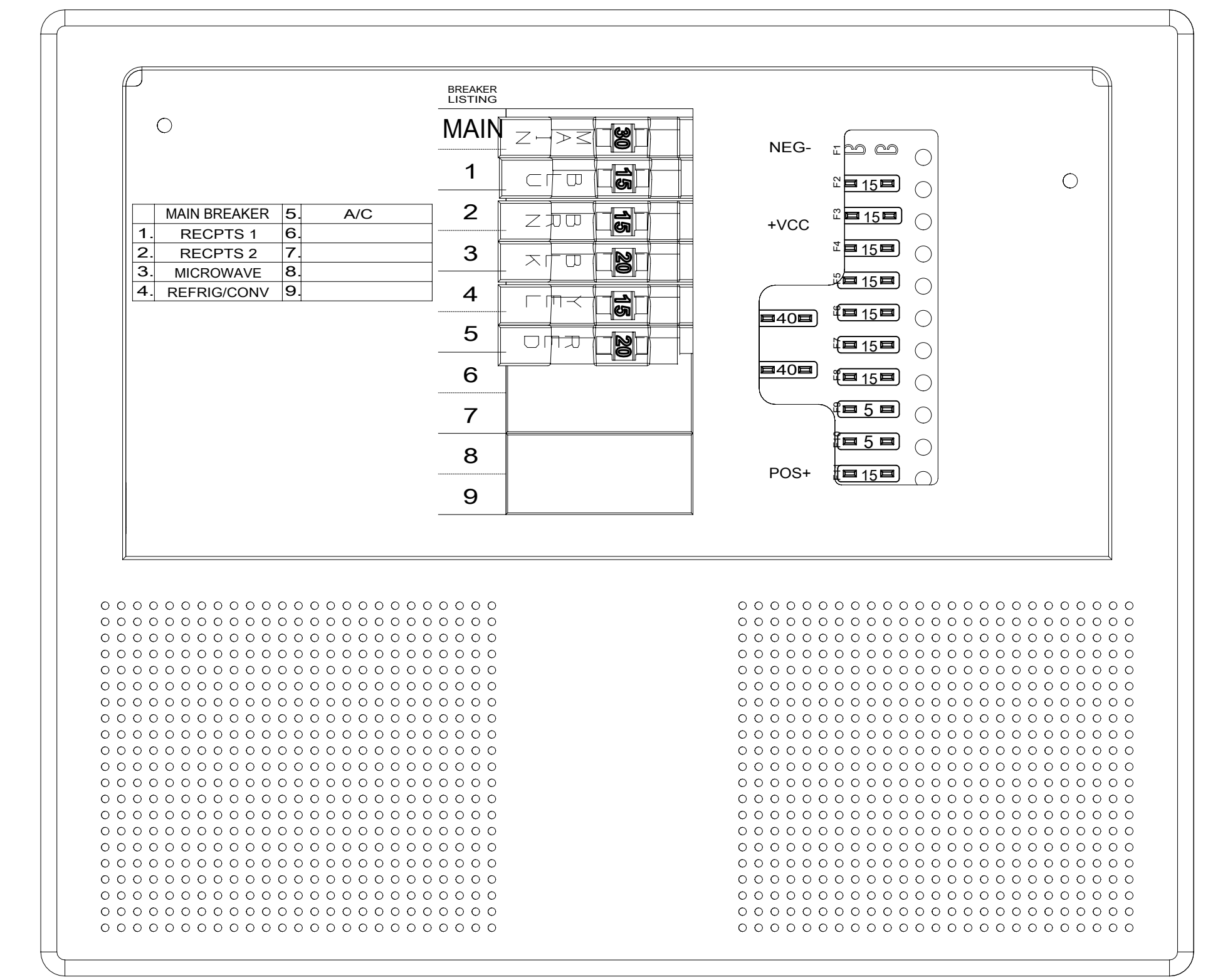
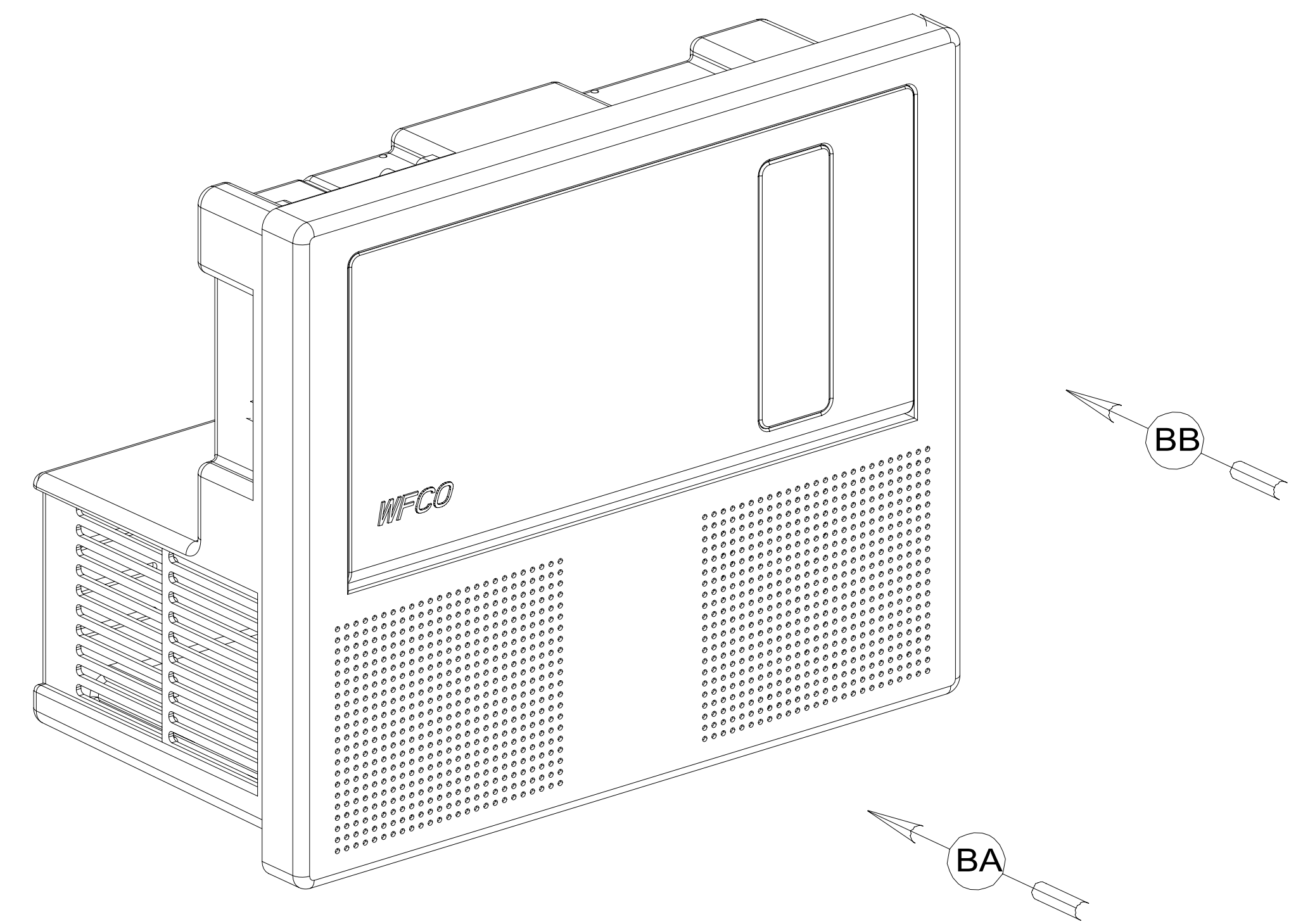
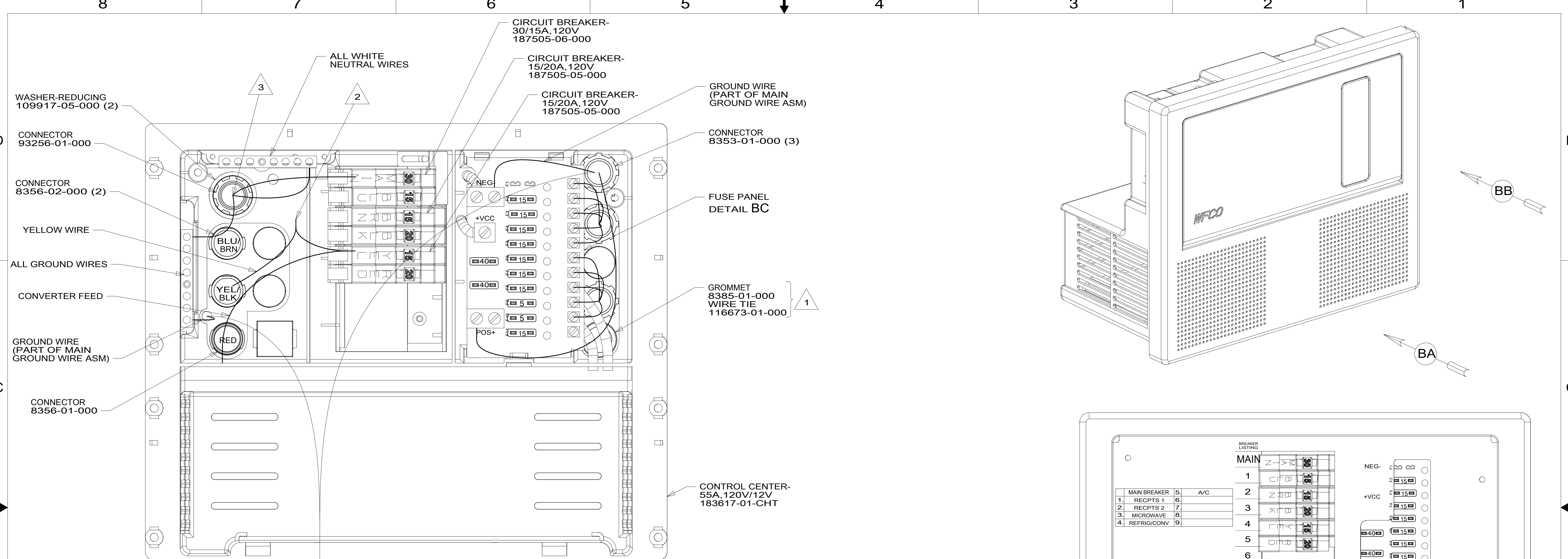


4

3

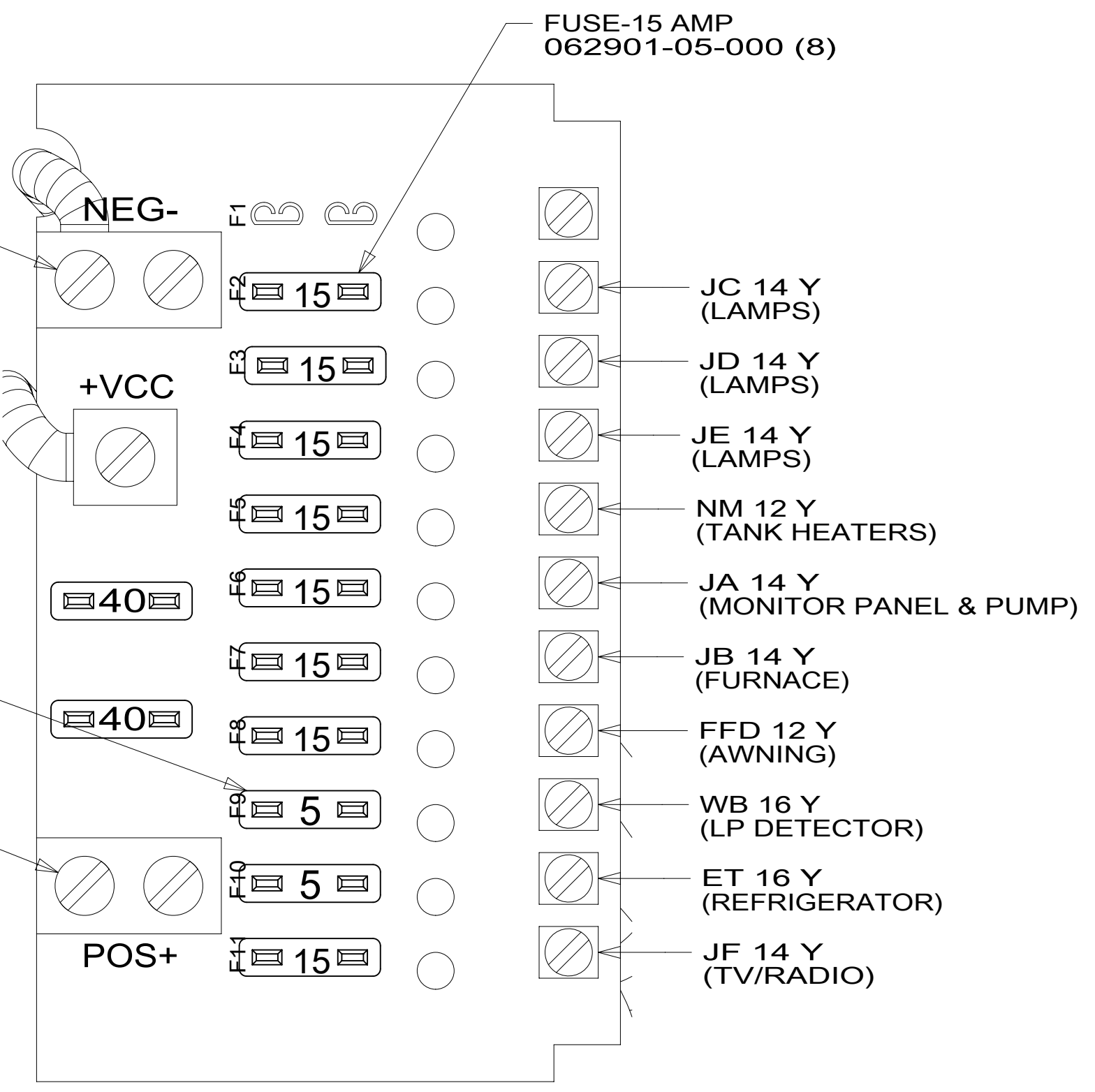
2

1 05-Apr-2017



VIEW BA
(COVER REMOVED)

VIEW BB
(DOOR REMOVED)



DETAIL BC

- NOTES:
- 3 110V MAIN TO BE INSTALLED ON LINE.
 - 2 CONNECT CONVERTER POWER CIRCUIT INTO YELLOW BREAKER USE SUPPLIED WIRE NUT TO CONNECT TO YELLOW CIRCUIT WIRE.
 - 1 INSERT GROMMET FROM THE INSIDE OF CONTROL CENTER. SECURE 110V WIRES TO BACKSIDE OF CONTROL CENTER WITH WIRE TIE.

FOR ELECTRICAL TORQUE SPECIFICATIONS SEE DWG NO. 128783-01-000

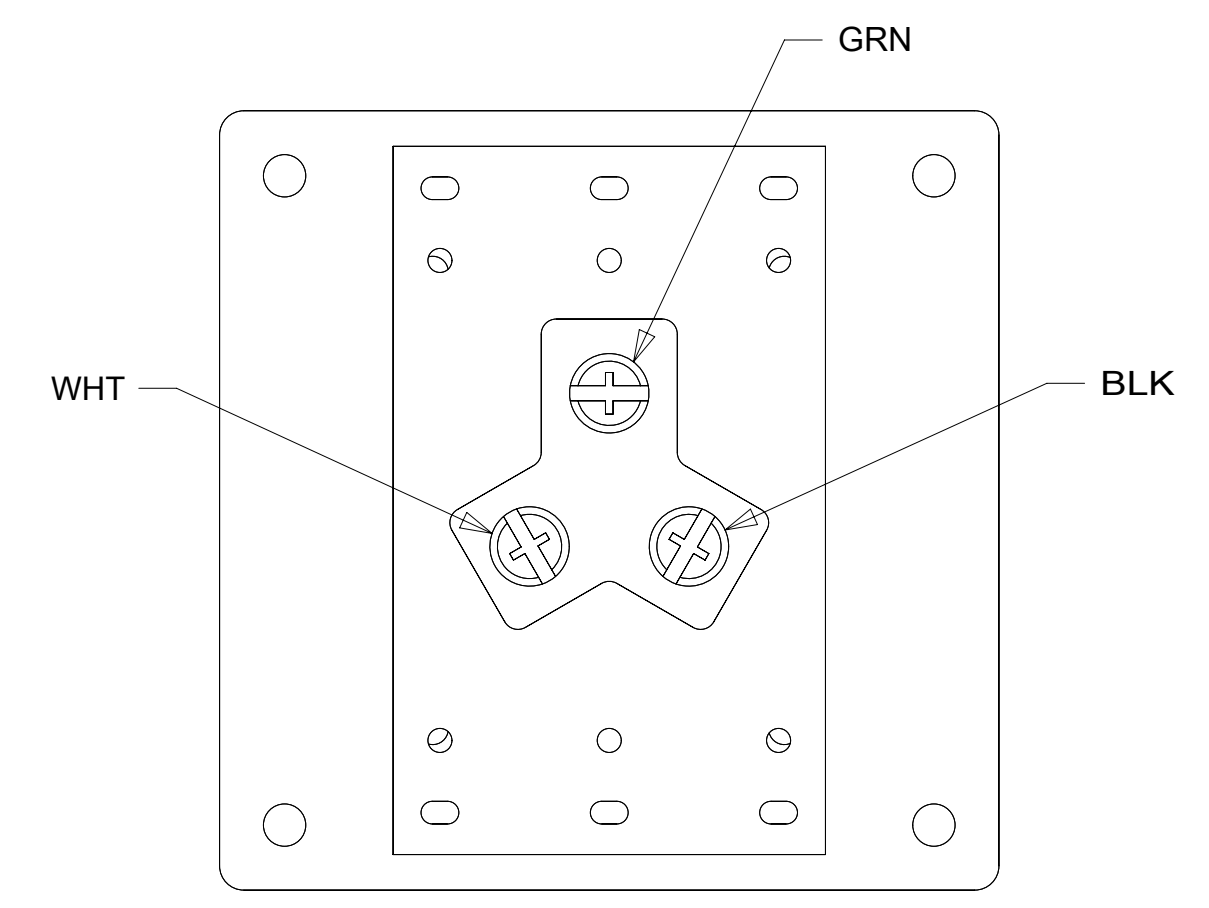
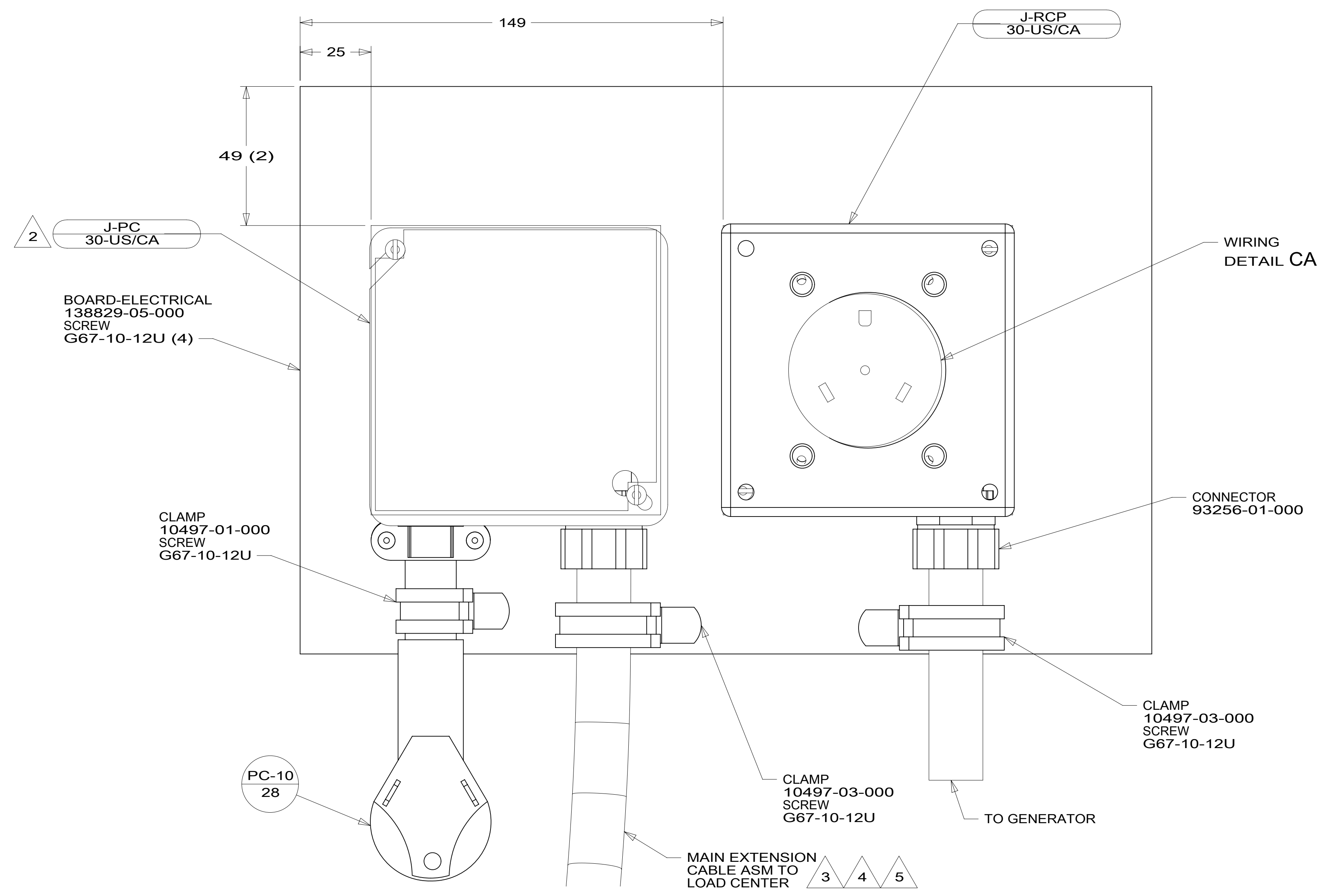
FOR ELECTRICAL CALLOUTS SEE DWG NO. 121339-01-000

- 265 CODES/STANDARDS-CSA/CMVSS
- 1B1 CODES/STANDARDS USA

DESCRIPTION:		1B1 265	
LOAD CENTER/ATS ASM			
SHEET:	ITEM/PART NO.:	REV:	
2 OF 3	000026880 / 31581001000		

8 7 6 5 4 3 2 1

D
C
B
A



DETAIL CA (BACK VIEW)

- 5 MAIN EXTENSION CABLE ASM TO BE INSTALLED ON LINE.
- 4 SEE SHEET 1 FOR ADDITIONAL INFORMATION.
- 3 SEE WIRING INSTL-BODY, 110V FOR ADDITIONAL INFORMATION.
- 2 CONNECT BLK TO BLK, WHT TO WHT, AND GRNDS TO GRNDS.

NOTES:
1. ALL GROUND WIRES TO BE COVERED WITH TUBING 8041-02-000.

FOR ELECTRICAL TORQUE SPECIFICATIONS SEE DWG NO. 128783-01-000

FOR ELECTRICAL CALLOUTS SEE DWG NO. 121339-01-000

265 CODES/STANDARDS-CSA/CMVSS
1B1 CODES/STANDARDS USA

DESCRIPTION:		1B1 265
LOAD CENTER/ATS ASM		
SHEET:	ITEM/PART NO.:	REV
3 OF 3	000026880 / 31581001000	

8 7 6 5 4 3 2 1 05-Apr-2017