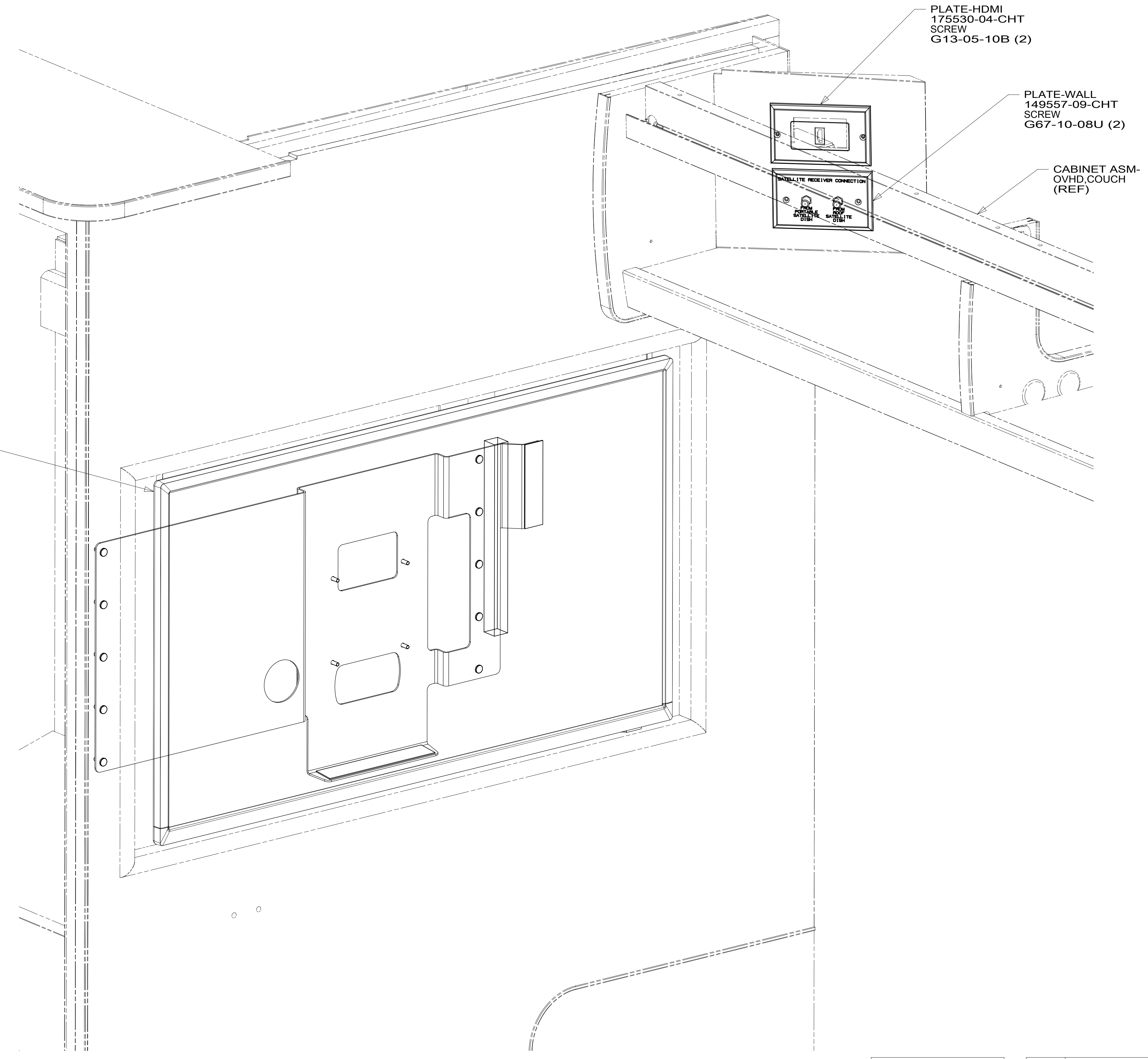


8 7 6 5 4 3 2 1

D  
C  
B  
A



- TV-32" HDTV
- 000031285 / 316939-01-000
- SCREW
- OMG02U-04-012 (4)
- WASHER-LOCK
- OME02U-04-071 (4)
- BRACKET-TV, 32 INSIG
- 000035491 / 318016-01-CHT
- TAPE-FOAM
- 076322-23-000 (100 MM)
- TAPE-FOAM
- 076322-23-000 (150 MM)

1

FOR ELECTRICAL TORQUE SPECIFICATIONS SEE DWG NO. 128783-01-000

FOR ELECTRICAL CALLOUTS SEE DWG NO. 121339-01-000

- 265 CODES/STANDARDS-CSA/CMVSS
- 1B1 CODES/STANDARDS USA
- 1B1 265



DSNR:	ALL DIMENSIONS ARE IN MILLIMETERS	
DIFFR:	MATERIAL:	
UNSPECIFIED TOLERANCES:		
WHOLE DIM (X) :	3	
ONE-PLACE (X.X) :	1.5	
TWO-PLACE (X.XX) :	0.50	
ANGLE :	1°	
REFER TO ES0018 FOR FASTENER TIGHTENING GUIDELINES	WEIGHT: (LBS)	FIRST USED:
		17 H25P

DESCRIPTION: <b>WIRING INSTL-TV/DVD</b>		
SHEET: 1 OF 3	ITEM/PART NO: 000026840 / 31580801000	REV:
REF:	1 01-Feb-2017	

NOTES:  
1 PREP BOTH SURFACES WITH ADHESIVE-PROMOTER 087211-01-000.

8 7 6 5 4 3 2 1

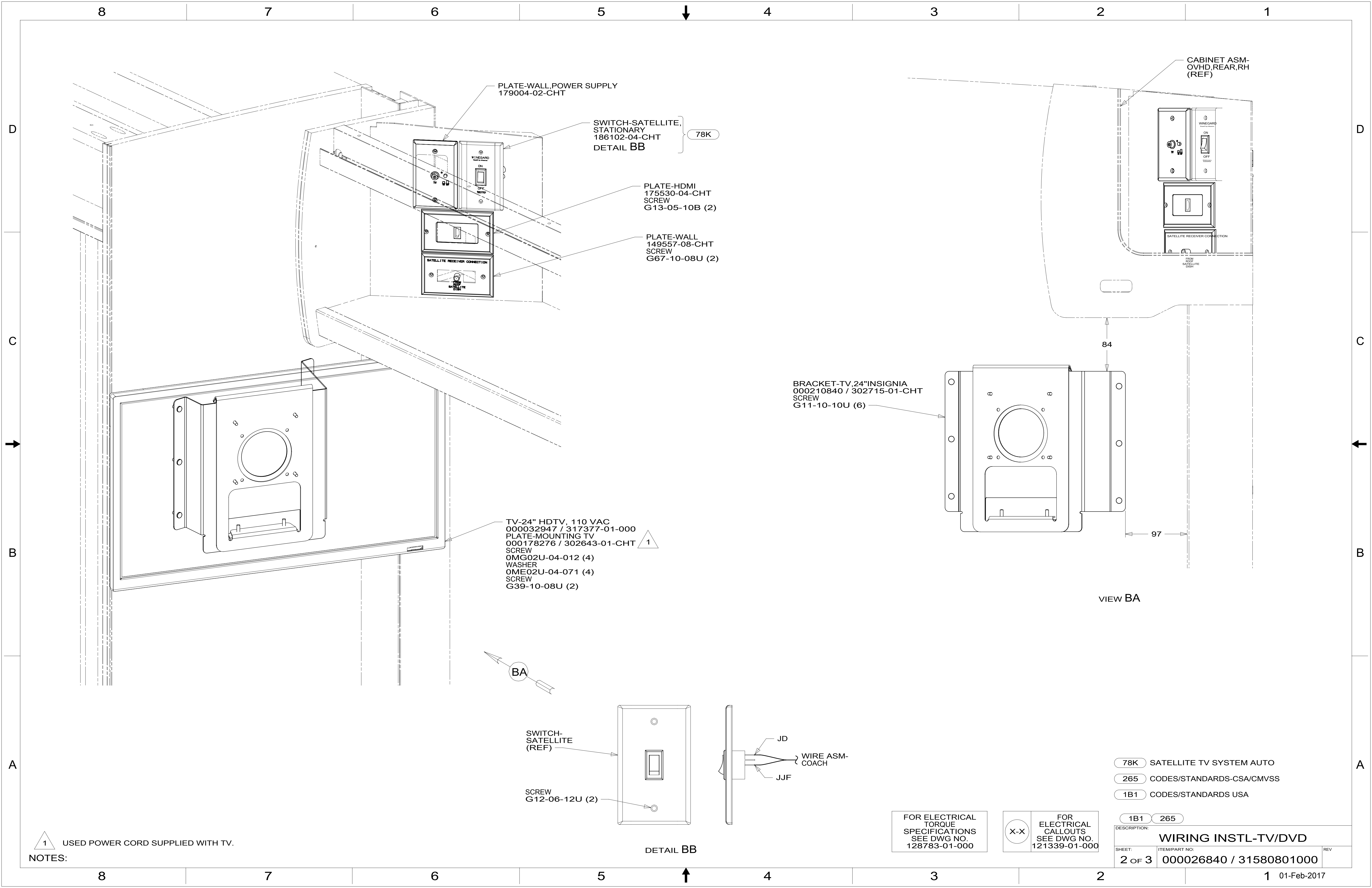


PLATE-WALL,POWER SUPPLY  
179004-02-CHT

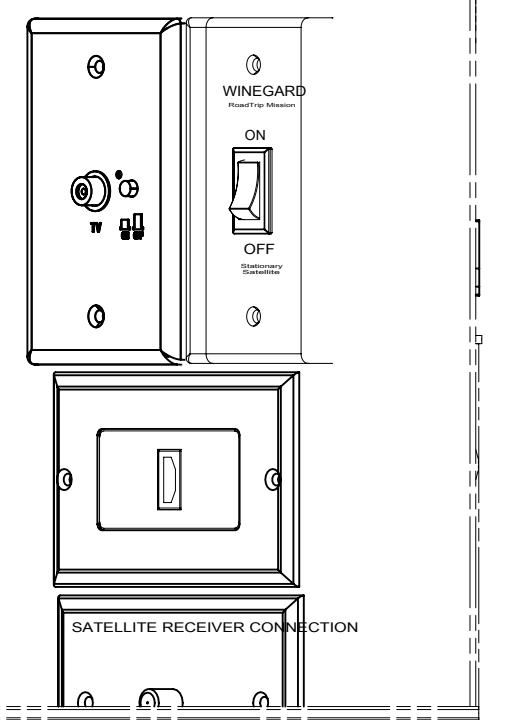
SWITCH-SATELLITE,  
STATIONARY  
186102-04-CHT  
DETAIL BB

78K

PLATE-HDMI  
175530-04-CHT  
SCREW  
G13-05-10B (2)

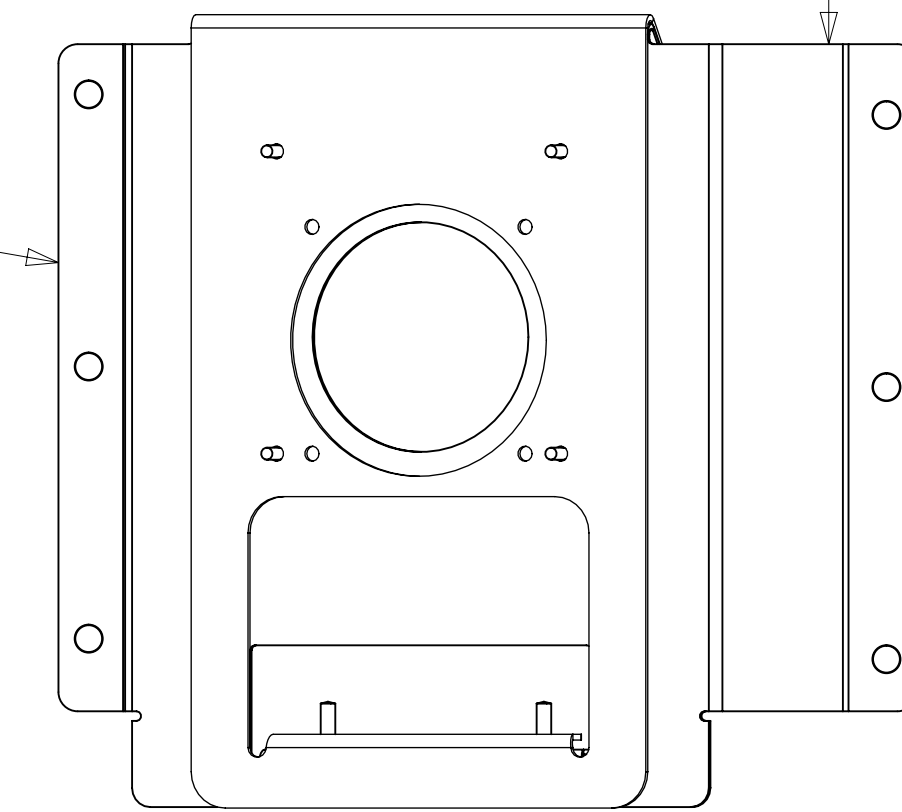
PLATE-WALL  
149557-08-CHT  
SCREW  
G67-10-08U (2)

CABINET ASM-  
OVHD,REAR,RH  
(REF)



84

BRACKET-TV,24"INSIGNIA  
000210840 / 302715-01-CHT  
SCREW  
G11-10-10U (6)



97

VIEW BA

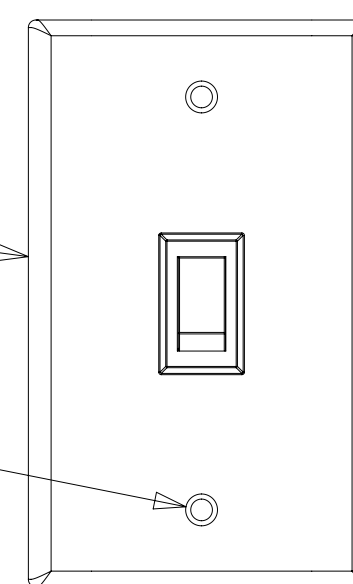
TV-24" HDTV, 110 VAC  
000032947 / 317377-01-000  
PLATE-MOUNTING TV  
000178276 / 302643-01-CHT  
SCREW  
OMG02U-04-012 (4)  
WASHER  
OME02U-04-071 (4)  
SCREW  
G39-10-08U (2)

1

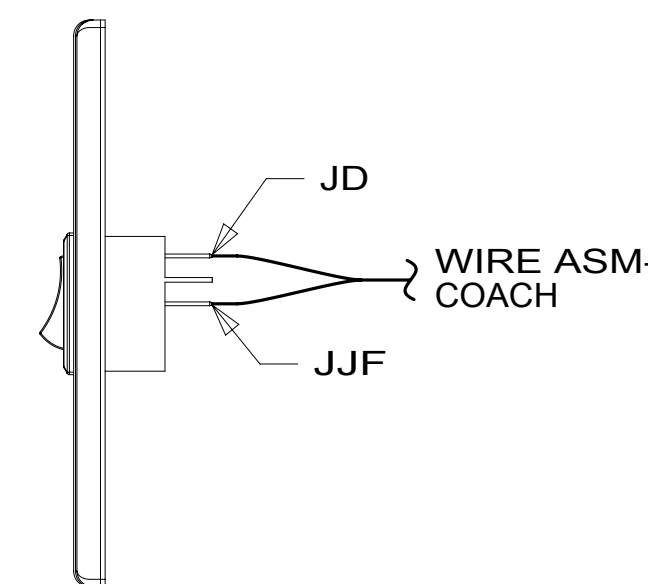
BA

SWITCH-  
SATELLITE  
(REF)

SCREW  
G12-06-12U (2)



DETAIL BB



FOR ELECTRICAL  
TORQUE  
SPECIFICATIONS  
SEE DWG NO.  
128783-01-000

X-X

FOR  
ELECTRICAL  
CALLOUTS  
SEE DWG NO.  
121339-01-000

- 78K SATELLITE TV SYSTEM AUTO
- 265 CODES/STANDARDS-CSA/CMVSS
- 1B1 CODES/STANDARDS USA

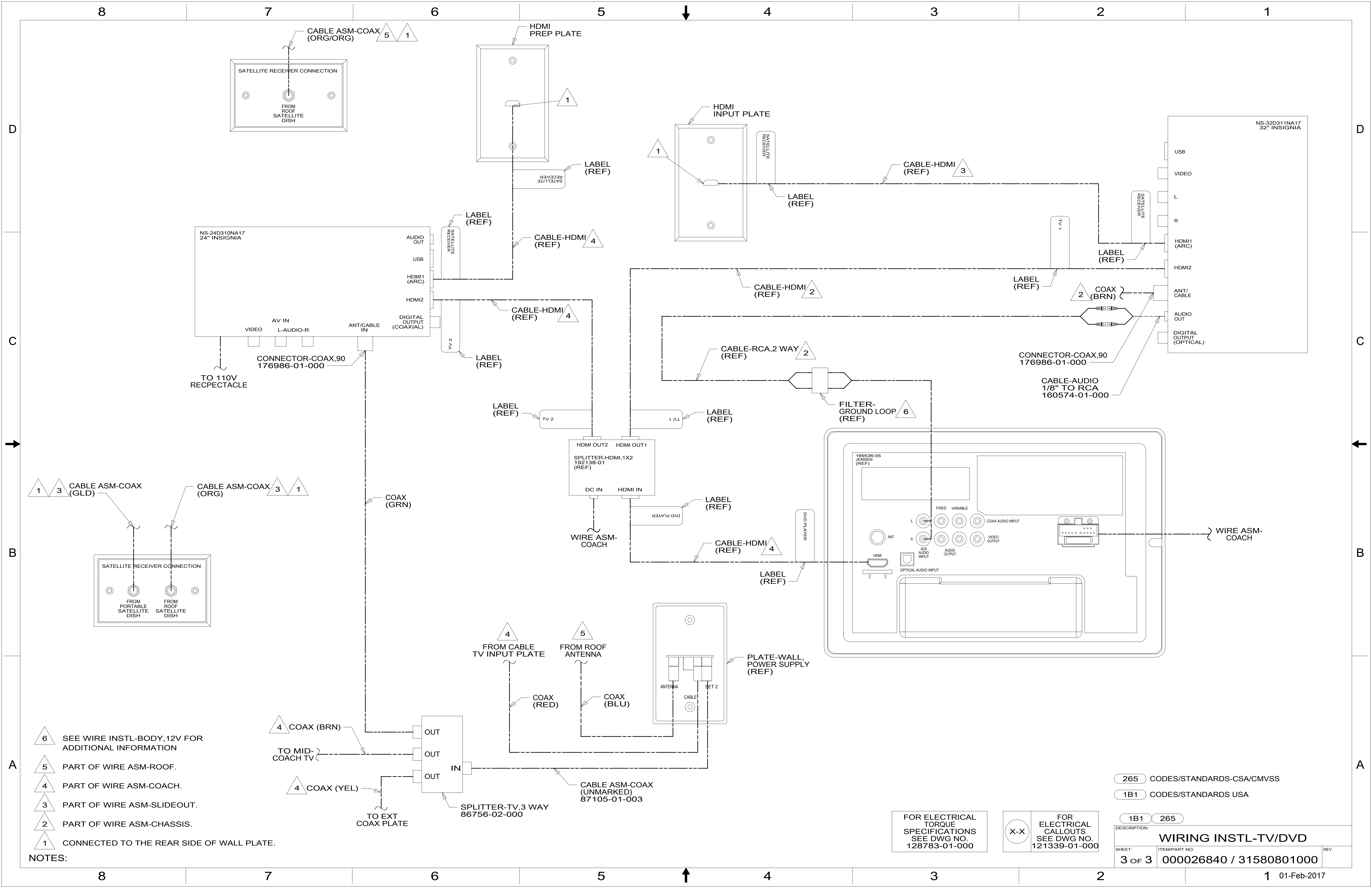
1B1 265

DESCRIPTION:  
**WIRING INSTL-TV/DVD**

SHEET: 2 OF 3 ITEM/PART NO: 000026840 / 31580801000 REV

1 USED POWER CORD SUPPLIED WITH TV.

NOTES:



- NOTES:
- 6 SEE WIRE INSTL-BODY, 12V FOR ADDITIONAL INFORMATION
  - 5 PART OF WIRE ASM-ROOF.
  - 4 PART OF WIRE ASM-COACH.
  - 3 PART OF WIRE ASM-SLIDEOUT.
  - 2 PART OF WIRE ASM-CHASSIS.
  - 1 CONNECTED TO THE REAR SIDE OF WALL PLATE.

FOR ELECTRICAL TORQUE SPECIFICATIONS SEE DWG NO. 128783-01-000

FOR ELECTRICAL CALLOUTS SEE DWG NO. 121339-01-000

265 CODES/STANDARDS-CSA/CMVSS  
 1B1 CODES/STANDARDS USA

DESCRIPTION:		1B1 265	
<b>WIRING INSTL-TV/DVD</b>			
SHEET:	ITEM/PART NO.:	REV	
3 OF 3	000026840 / 31580801000		