

PANEL-RCP
151376-02-CHT
ADAPTER
082134-01-000
NUT
82136-01-000
LABEL
157486-01-CHT
SCREW
G67-10-12U (4)

4 PIN HSG FROM
WIRE ASM-COACH
CIRCUITS;
ABY,ABZ,DR,DU

2 PIN HSG FROM
WIRE ASM-CHASSIS
CIRCUIT; DY

2 PIN HSG FROM
WIRE ASM-CHASSIS
CIRCUITS; LLL,LLK

6 PIN HSG
WITH GRN TAPE

6 PIN HSG
WITH YEL TAPE

VIEW AB

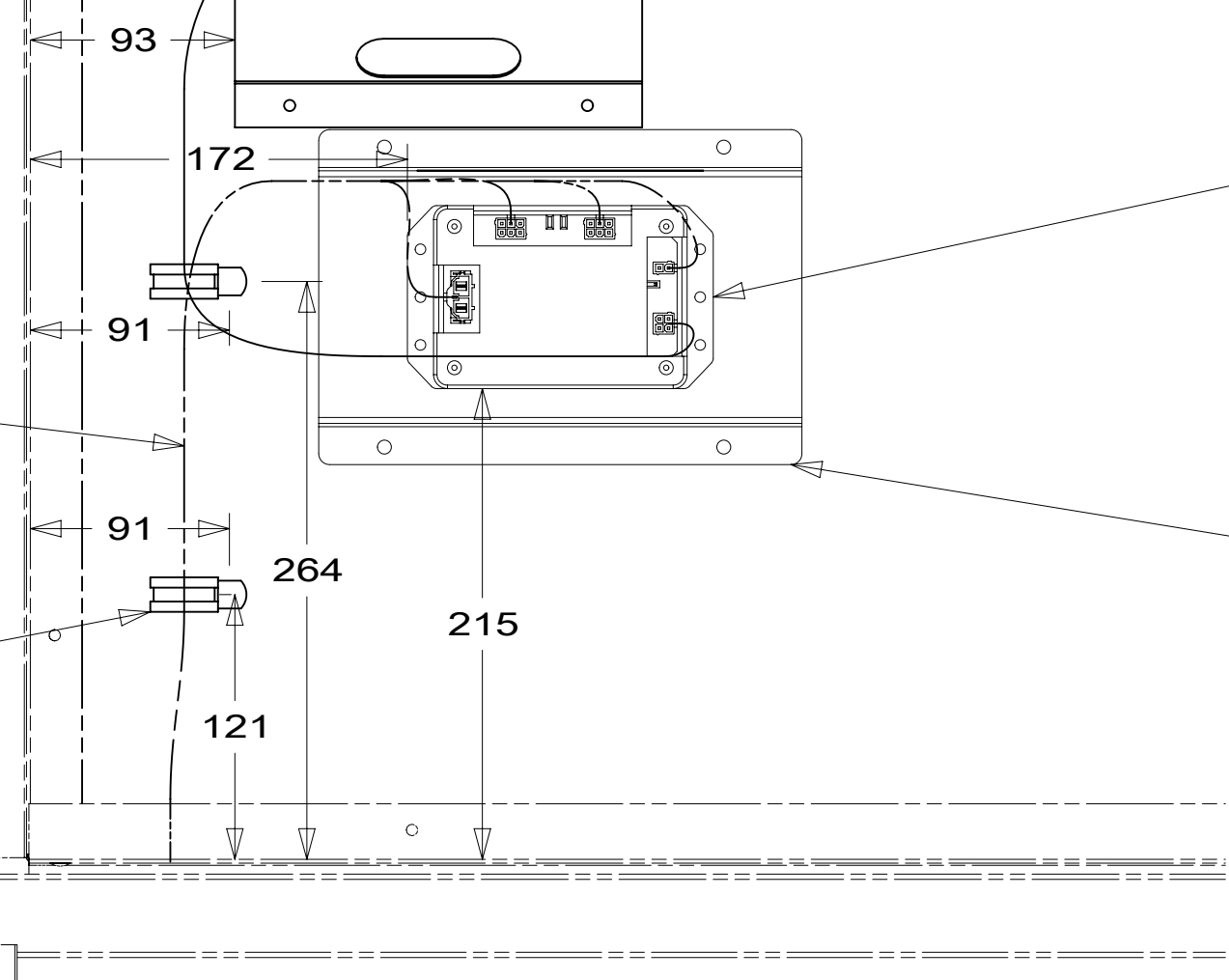
CONTROL-SLIDEOUT,IN-WALL
189400-01-000
SCREW
G39-08-12U (6)
DETAIL AB

COVER-ELECTRICAL
194965-01-CHT
LABEL-SLIDEOUT
098379-09-000

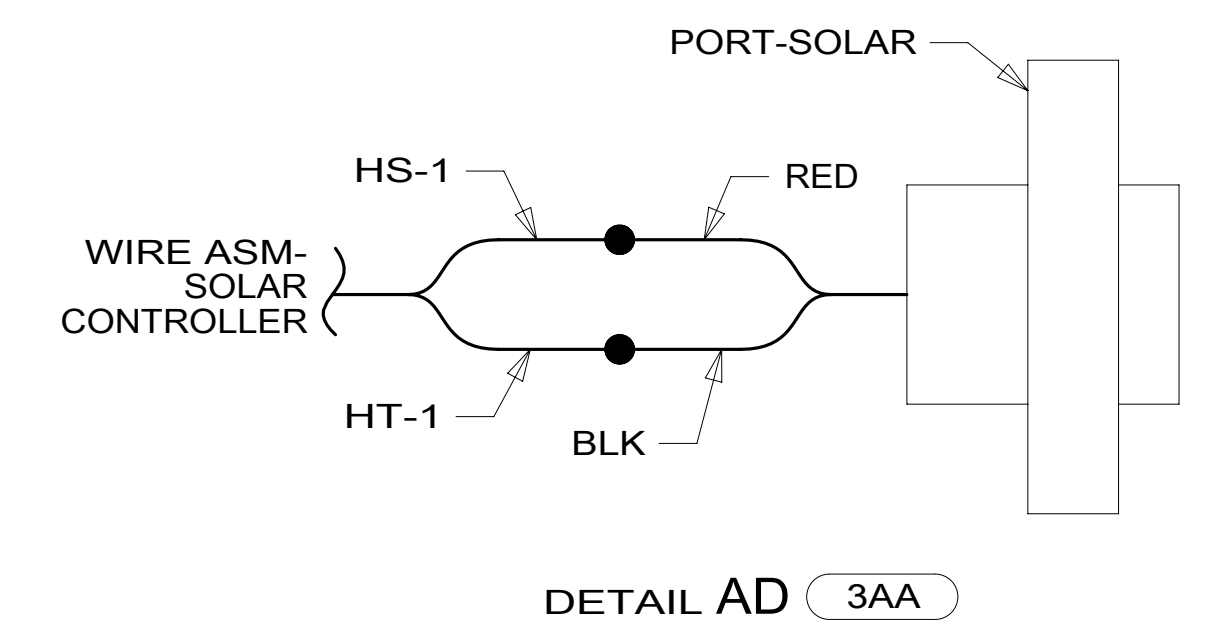
SWITCH-LP VALVE
108357-01-000
ACTUATOR-SWITCH
108356-01-CHT

WIRE ASM-CHASSIS
(REFERENCE)

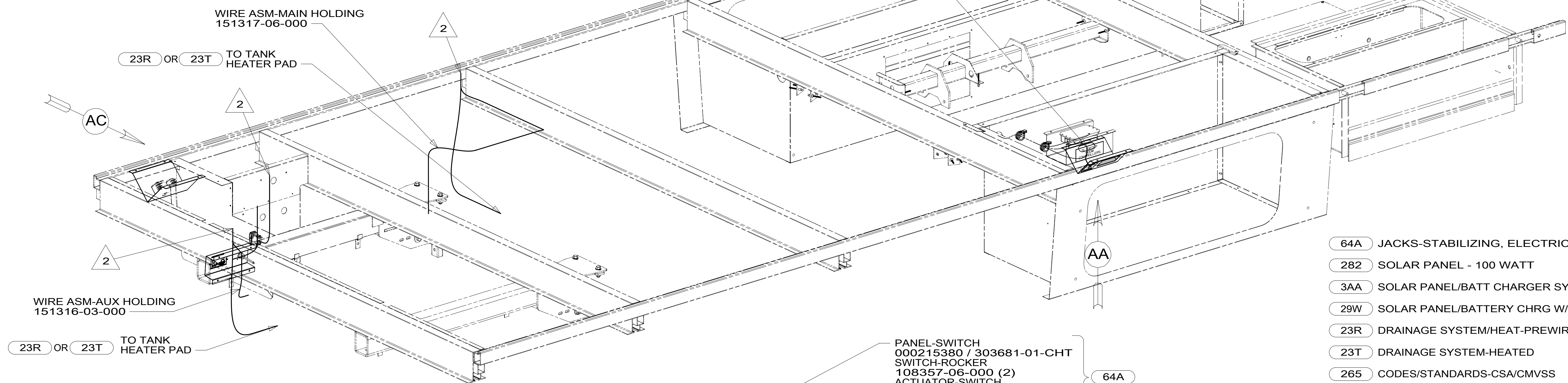
CLAMP
010497-10-000 (2)
SCREW
G39-08-12U (2)



VIEW AA



DETAIL AD 3AA



WIRE ASM-AUX HOLDING
151316-03-000

23R OR 23T TO TANK
HEATER PAD

WIRE ASM-MAIN HOLDING
151317-06-000

23R OR 23T TO TANK
HEATER PAD

PANEL-SWITCH
000215380 / 303681-01-CHT
SWITCH-ROCKER
108357-06-000 (2)
ACTUATOR-SWITCH
108356-01-CHT (2)
LABEL-STABILIZER
000007799 / 310651-01-CHT

64A

PLATE-WALL
149557-03-CHT
SCREW
G39-08-08U (2)

PANEL-SERVICE
132862-04-CHT
SCREW
G11-10-10U (4)
PLATE-WALL
132862-16-CHT
SCREW
G39-08-08U (4)

29W

282 OR 3AA

SWITCH-PUMP
108357-21-000
ACTUATOR
108356-23-CHT

PORT-SOLAR,SINGLE
191558-01-000
SCREW
G39-10-16U (4)
DETAIL AD

282 OR 3AA

FOR ELECTRICAL
TORQUE
SPECIFICATIONS
SEE DWG NO.
128783-01-000

FOR ELECTRICAL
CALLOUTS
SEE DWG NO.
121339-01-000

- 64A JACKS-STABILIZING, ELECTRIC
- 282 SOLAR PANEL - 100 WATT
- 3AA SOLAR PANEL/BATT CHARGER SYS
- 29W SOLAR PANEL/BATTERY CHRG W/O
- 23R DRAINAGE SYSTEM/HEAT-PREWIRE
- 23T DRAINAGE SYSTEM-HEATED
- 265 CODES/STANDARDS-CSA/CMVSS
- 1B1 CODES/STANDARDS USA

1B1 265

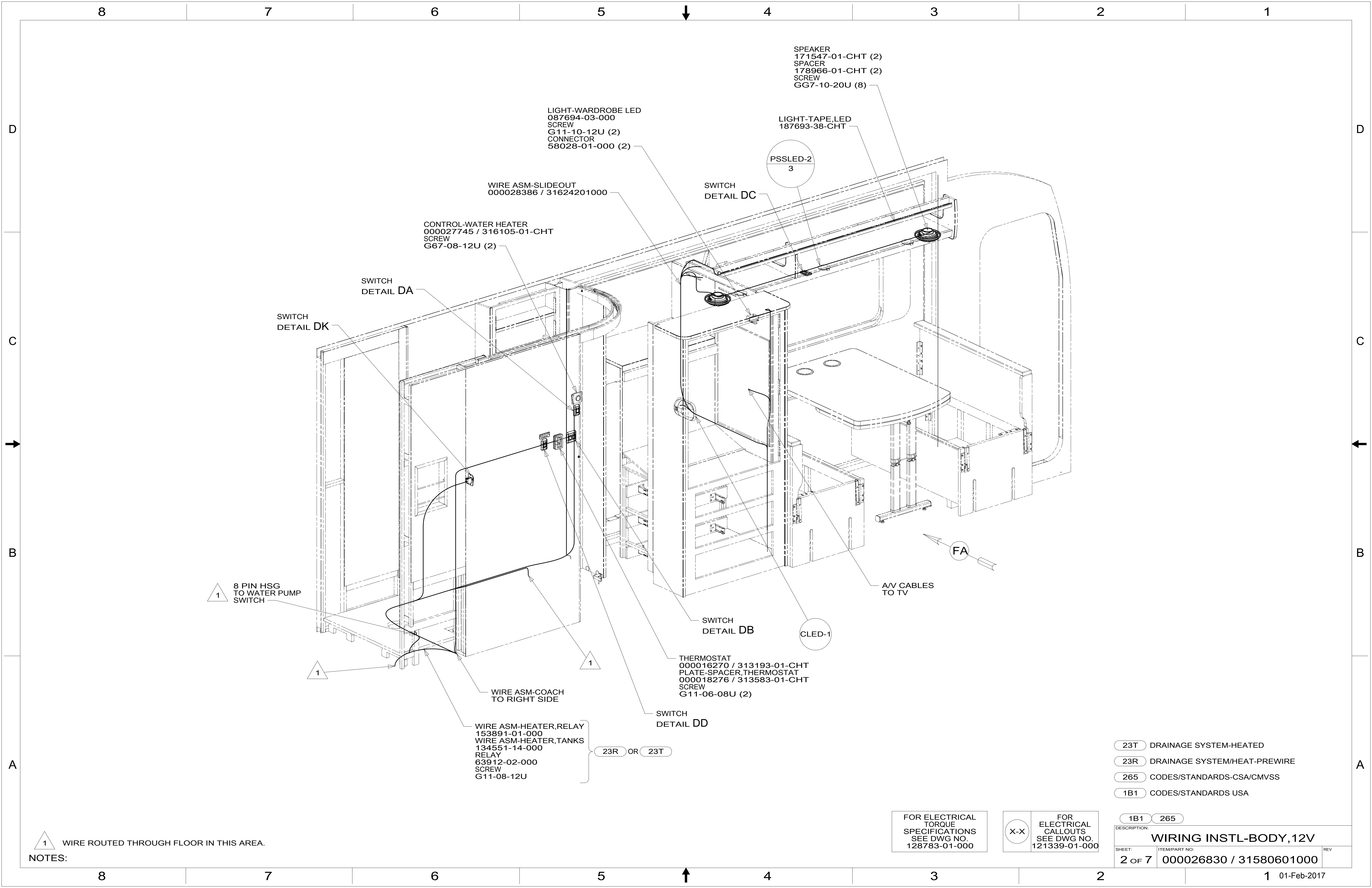
WINNEBAGO
COPYRIGHT 2016 WINNEBAGO INDUSTRIES, INC.

DSNR:	ALL DIMENSIONS ARE IN MILLIMETERS	MATERIAL:
DFFR:		
UNSPECIFIED TOLERANCES:		
WHOLE DIM (X)	3	
ONE-PLACE (X.X)	1.5	
TWO-PLACE (X.XX)	0.50	
ANGLE	1°	
REFER TO ES0018 FOR FASTENER TIGHTENING GUIDELINES	WEIGHT: (LBS)	FIRST USED: 17 H25P
DESCRIPTION: WIRING INSTL-BODY, 12V		
SHEET: 1 OF 7	ITEM/PART NO: 000026830 / 31580601000	REV
REF:		1 01-Feb-2017

2 WIRE ROUTED THROUGH FLOOR IN THIS AREA.

1. ROUTE TANK SENSOR WIRES SO THEY DO NOT PASS OVER SENSORS. USE WIRE TIE MOUNT 155366-01-000 AS NEEDED. TANK SURFACE MUST BE CLEANED USING ISOPROPYL ALCOHOL AND PRIME WITH PRIMER 94.

NOTES:



SPEAKER
171547-01-CHT (2)
SPACER
178966-01-CHT (2)
SCREW
GG7-10-20U (8)

LIGHT-TAPE,LED
187693-38-CHT

PSSLED-2
3

SWITCH
DETAIL DC

LIGHT-WARDROBE LED
087694-03-000
SCREW
G11-10-12U (2)
CONNECTOR
58028-01-000 (2)

WIRE ASM-SLIDEOUT
000028386 / 31624201000

CONTROL-WATER HEATER
000027745 / 316105-01-CHT
SCREW
G67-08-12U (2)

SWITCH
DETAIL DA

SWITCH
DETAIL DK

FA

A/V CABLES
TO TV

CLED-1

SWITCH
DETAIL DB

THERMOSTAT
000016270 / 313193-01-CHT
PLATE-SPACER,THERMOSTAT
000018276 / 313583-01-CHT
SCREW
G11-06-08U (2)

SWITCH
DETAIL DD

WIRE ASM-COACH
TO RIGHT SIDE

WIRE ASM-HEATER,RELAY
153891-01-000
WIRE ASM-HEATER,TANKS
134551-14-000
RELAY
63912-02-000
SCREW
G11-08-12U

23R OR 23T

1 8 PIN HSG
TO WATER PUMP
SWITCH

1

1

- 23T DRAINAGE SYSTEM-HEATED
- 23R DRAINAGE SYSTEM/HEAT-PREWIRED
- 265 CODES/STANDARDS-CSA/CMVSS
- 1B1 CODES/STANDARDS USA

1B1 265

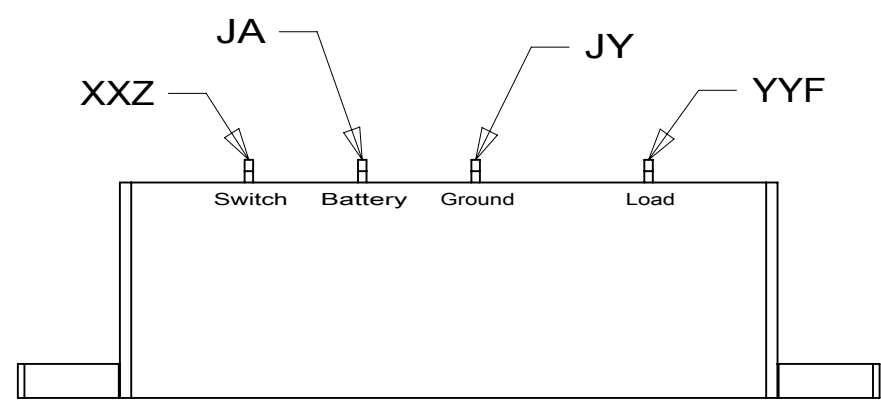
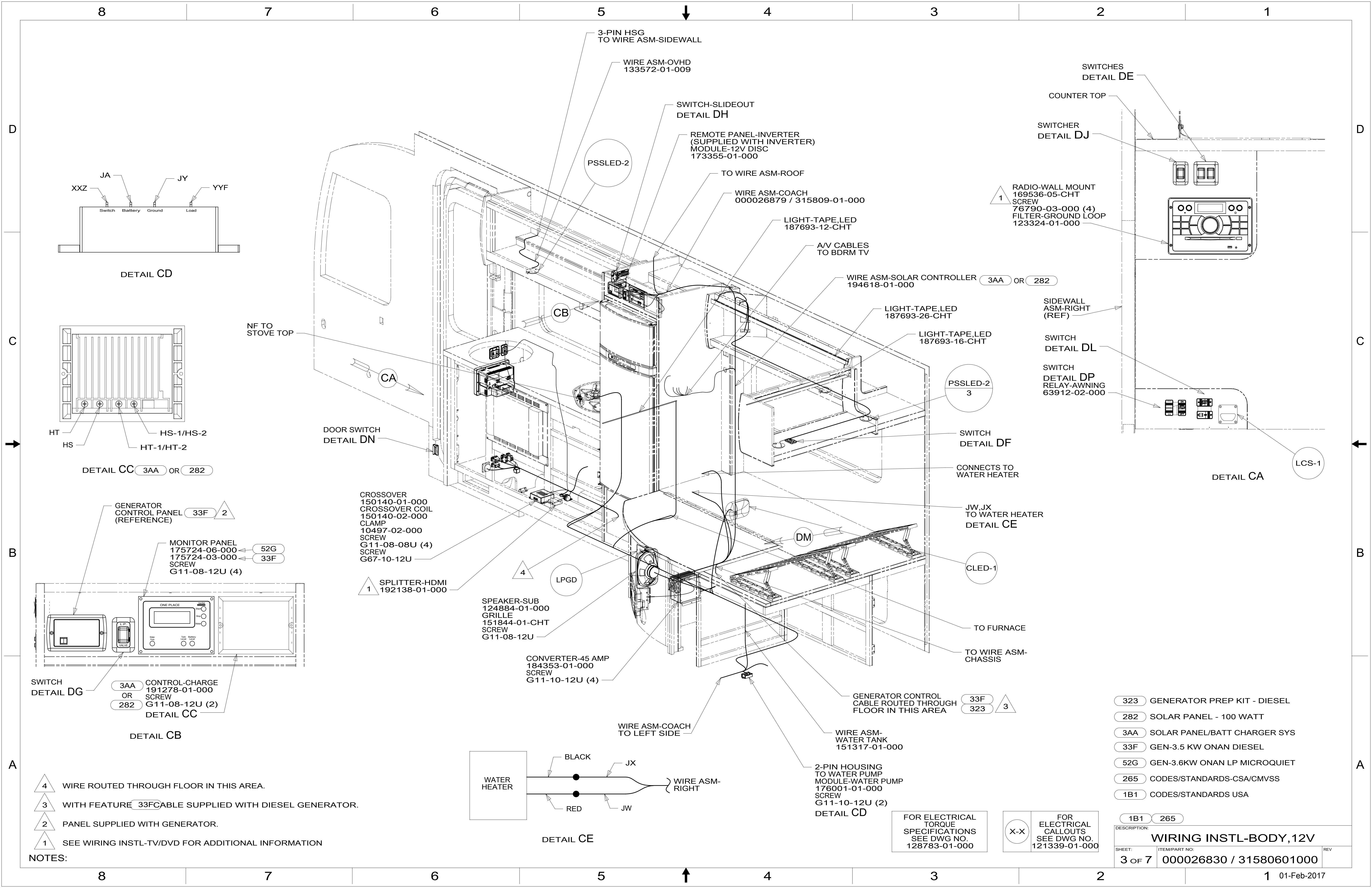
FOR ELECTRICAL
TORQUE
SPECIFICATIONS
SEE DWG NO.
128783-01-000

FOR
ELECTRICAL
CALLOUTS
SEE DWG NO.
121339-01-000

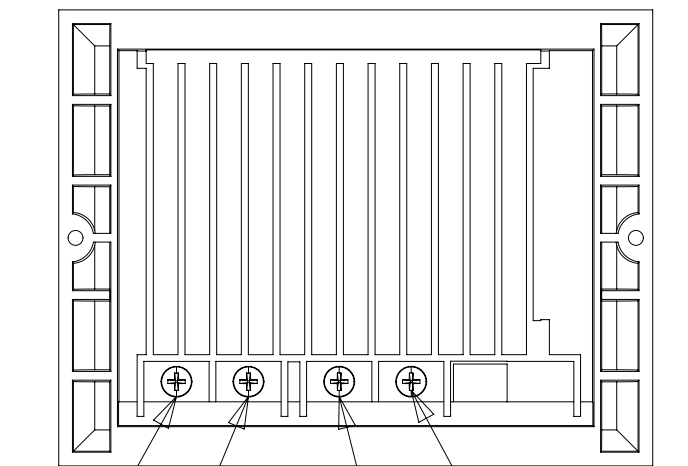
DESCRIPTION: WIRING INSTL-BODY, 12V		
SHEET: 2 OF 7	ITEM/PART NO: 000026830 / 31580601000	REV

1 WIRE ROUTED THROUGH FLOOR IN THIS AREA.

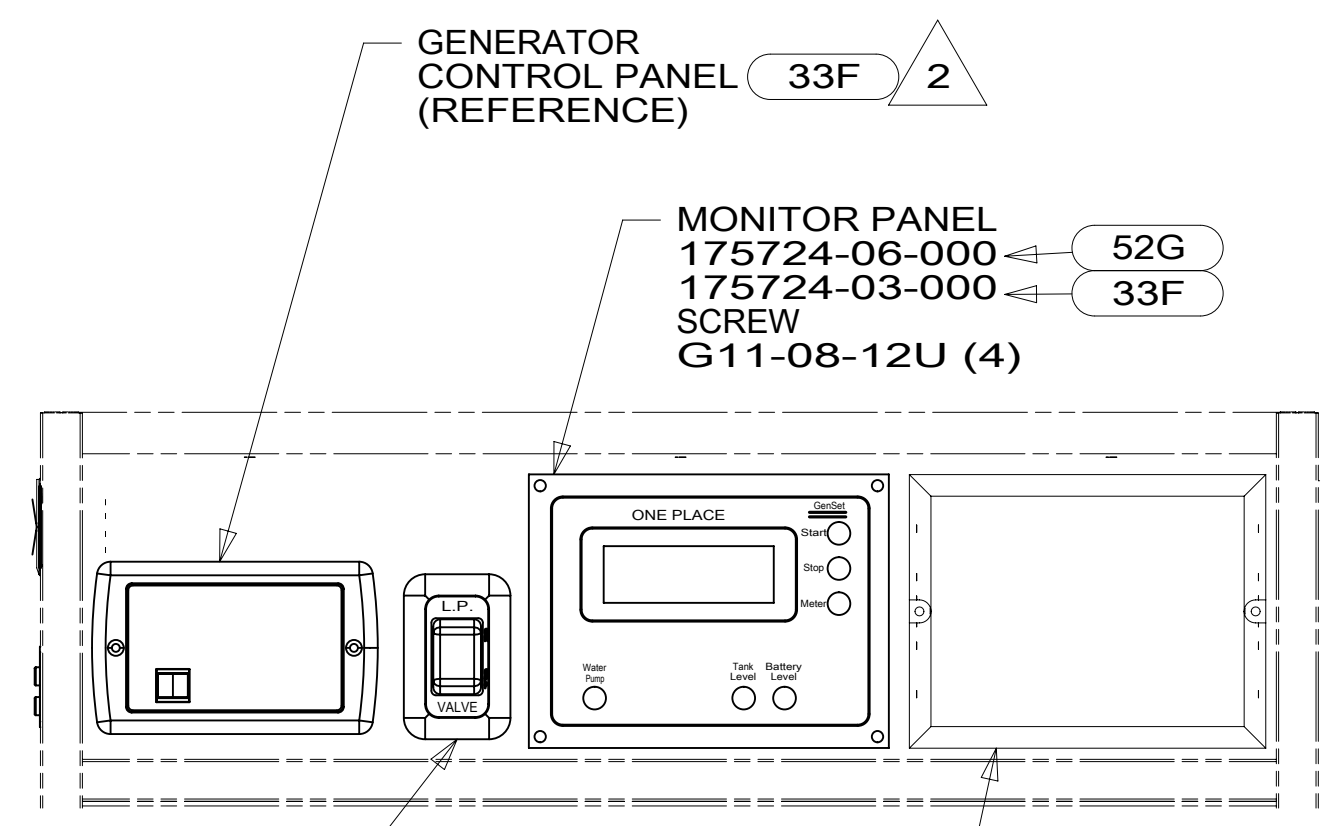
NOTES:



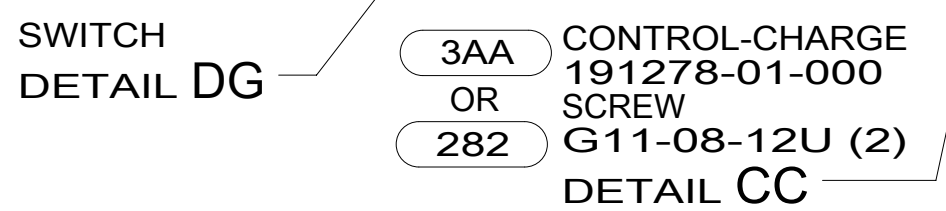
DETAIL CD



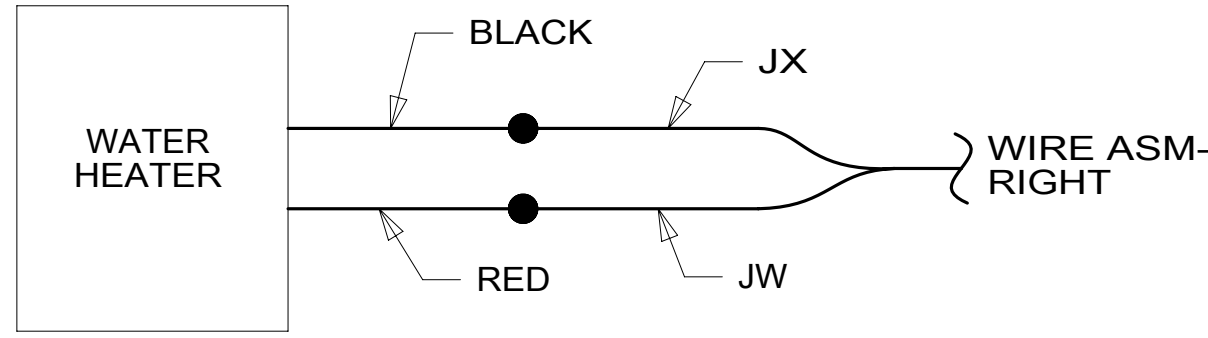
DETAIL CC 3AA OR 282



DETAIL CB



DETAIL DG



DETAIL CE

- NOTES:
- 4 WIRE ROUTED THROUGH FLOOR IN THIS AREA.
 - 3 WITH FEATURE 33FCABLE SUPPLIED WITH DIESEL GENERATOR.
 - 2 PANEL SUPPLIED WITH GENERATOR.
 - 1 SEE WIRING INSTL-TV/DVD FOR ADDITIONAL INFORMATION

- 1 SPLITTER-HDMI 192138-01-000
- 4 CROSSOVER 150140-01-000
- CROSSOVER COIL 150140-02-000
- CLAMP 10497-02-000
- SCREW G11-08-08U (4)
- SCREW G67-10-12U

- SPEAKER-SUB 124884-01-000
- GRILLE 151844-01-CHT
- SCREW G11-08-12U

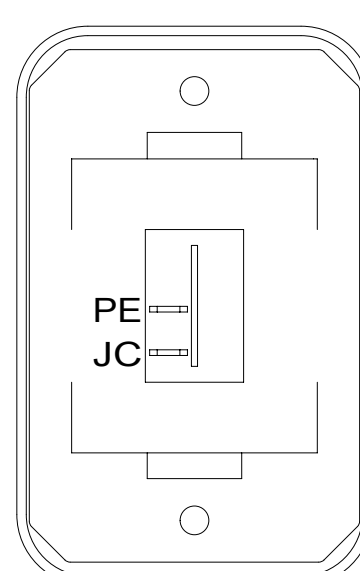
- CONVERTER-45 AMP 184353-01-000
- SCREW G11-10-12U (4)

FOR ELECTRICAL TORQUE SPECIFICATIONS SEE DWG NO. 128783-01-000

FOR ELECTRICAL CALLOUTS SEE DWG NO. 121339-01-000

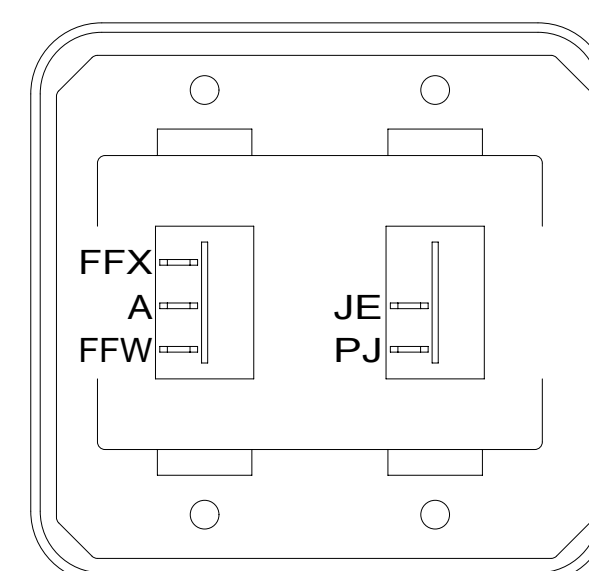
- 323 GENERATOR PREP KIT - DIESEL
- 282 SOLAR PANEL - 100 WATT
- 3AA SOLAR PANEL/BATT CHARGER SYS
- 33F GEN-3.5 KW ONAN DIESEL
- 52G GEN-3.6KW ONAN LP MICROQUIET
- 265 CODES/STANDARDS-CSA/CMVSS
- 1B1 CODES/STANDARDS USA

DESCRIPTION: 1B1 265		
WIRING INSTL-BODY, 12V		
SHEET: 3 OF 7	ITEM/PART NO: 000026830 / 31580601000	REV:



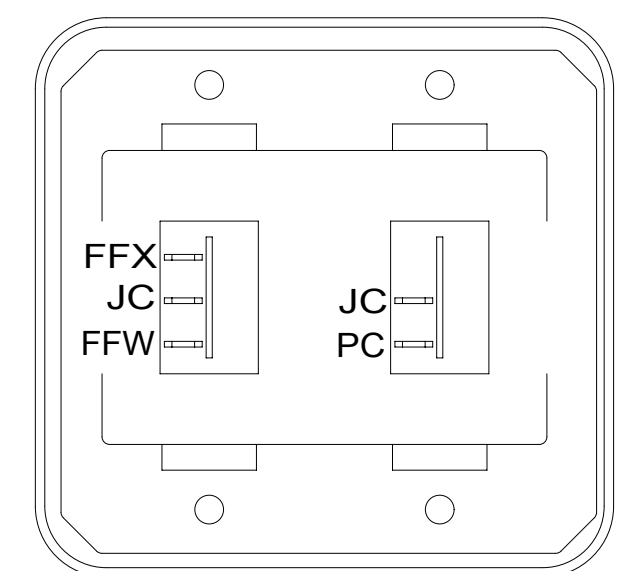
SWITCH-ROCKER
135740-01-CHT
SWITCH-BASE
135741-01-CHT
SWITCH-BEZEL
135742-01-CHT
SCREW
G11-08-08U (2)

DETAIL DA



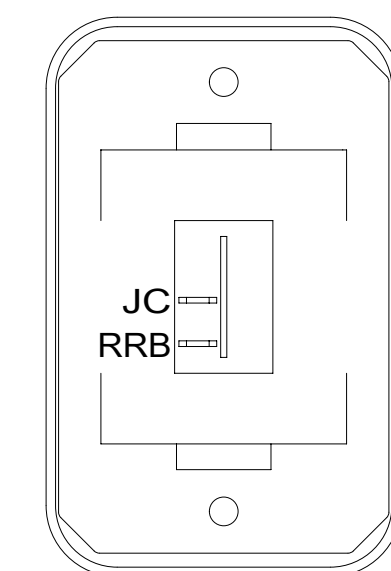
SWITCH-ROCKER
135740-01-CHT
135740-02-CHT
SWITCH-BASE
135741-02-CHT
SWITCH-BEZEL
135742-02-CHT
SCREW
G11-08-08U (4)

DETAIL DE



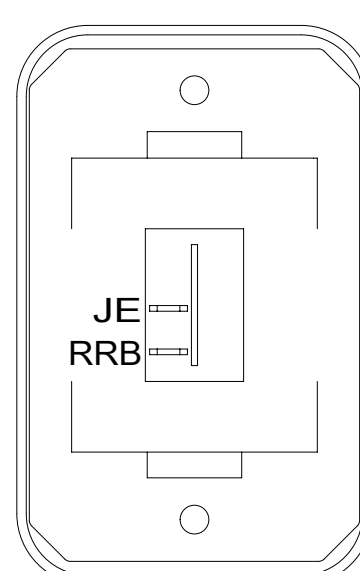
SWITCH-ROCKER
135740-01-CHT
135740-02-CHT
SWITCH-BASE
135741-02-CHT
SWITCH-BEZEL
135742-02-CHT
SCREW
G11-08-08U (4)

DETAIL DB



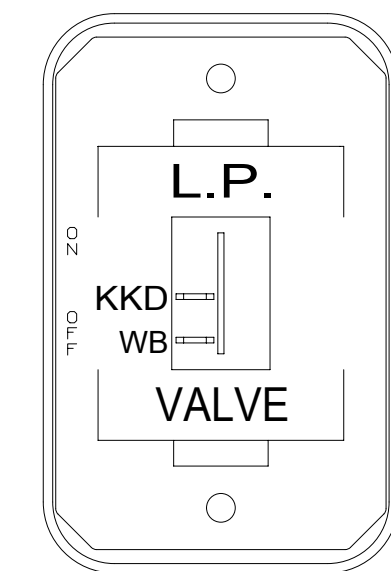
SWITCH-ROCKER
135740-01-CHT
SWITCH-BASE
135741-01-CHT
SWITCH-BEZEL
135742-01-CHT
SCREW
G11-08-08U (2)

DETAIL DF



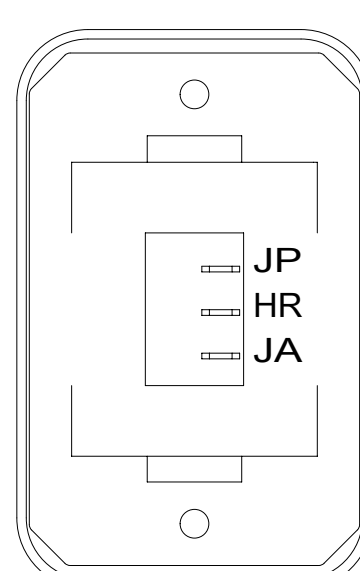
SWITCH-ROCKER
135740-01-CHT
SWITCH-BASE
135741-01-CHT
SWITCH-BEZEL
135742-01-CHT
SCREW
G11-08-08U (2)

DETAIL DC



SWITCH-ROCKER
135740-01-CHT
SWITCH-BASE
135741-01-CHT
SWITCH-BEZEL
135742-59-CHT
SCREW
G11-08-08U (2)

DETAIL DG

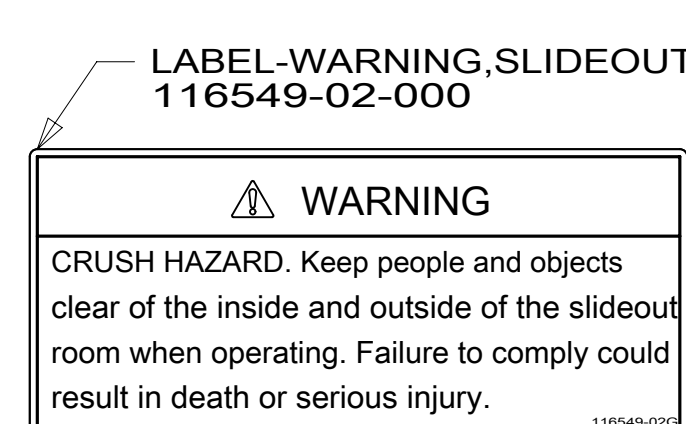


SWITCH-ROCKER
135740-06-CHT
SWITCH-BASE
135741-01-CHT
SWITCH-BEZEL
135742-01-CHT
SCREW
G11-08-08U (2)
LABEL-SWITCH
134563-01-CHT

23T OR 23R

23T OR 23R

DETAIL DD



LABEL-WARNING, SLIDEOUT
116549-02-000

WARNING
CRUSH HAZARD. Keep people and objects clear of the inside and outside of the slideout room when operating. Failure to comply could result in death or serious injury.

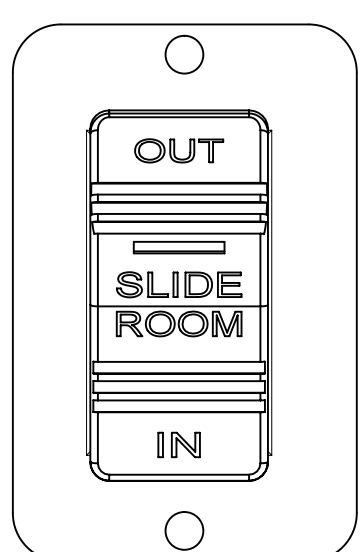
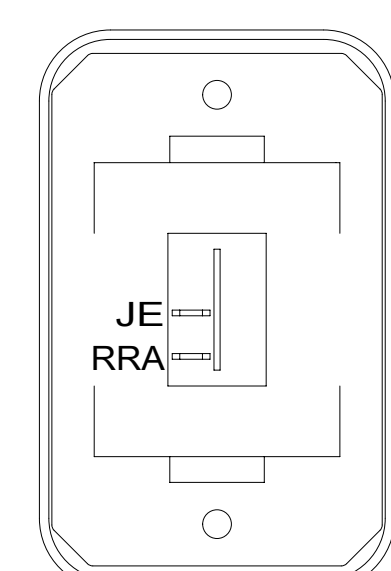


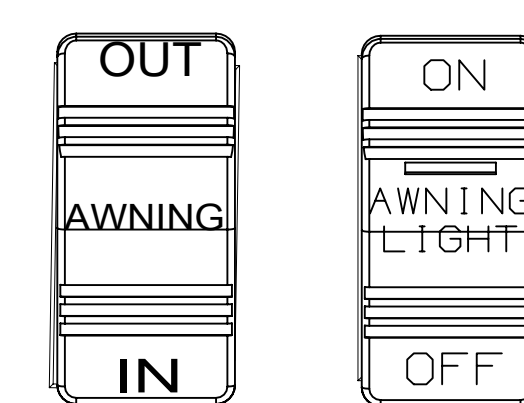
PLATE
144363-02-CHT
SWITCH
108357-18-000
ACTUATOR
108356-31-CHT
SCREW
G11-08-10U (2)
RELAY
063912-02-000

DETAIL DH



SWITCH-ROCKER
135740-01-CHT
SWITCH-BASE
135741-01-CHT
SWITCH-BEZEL
135742-01-CHT
SCREW
G11-08-08U (2)

DETAIL DJ

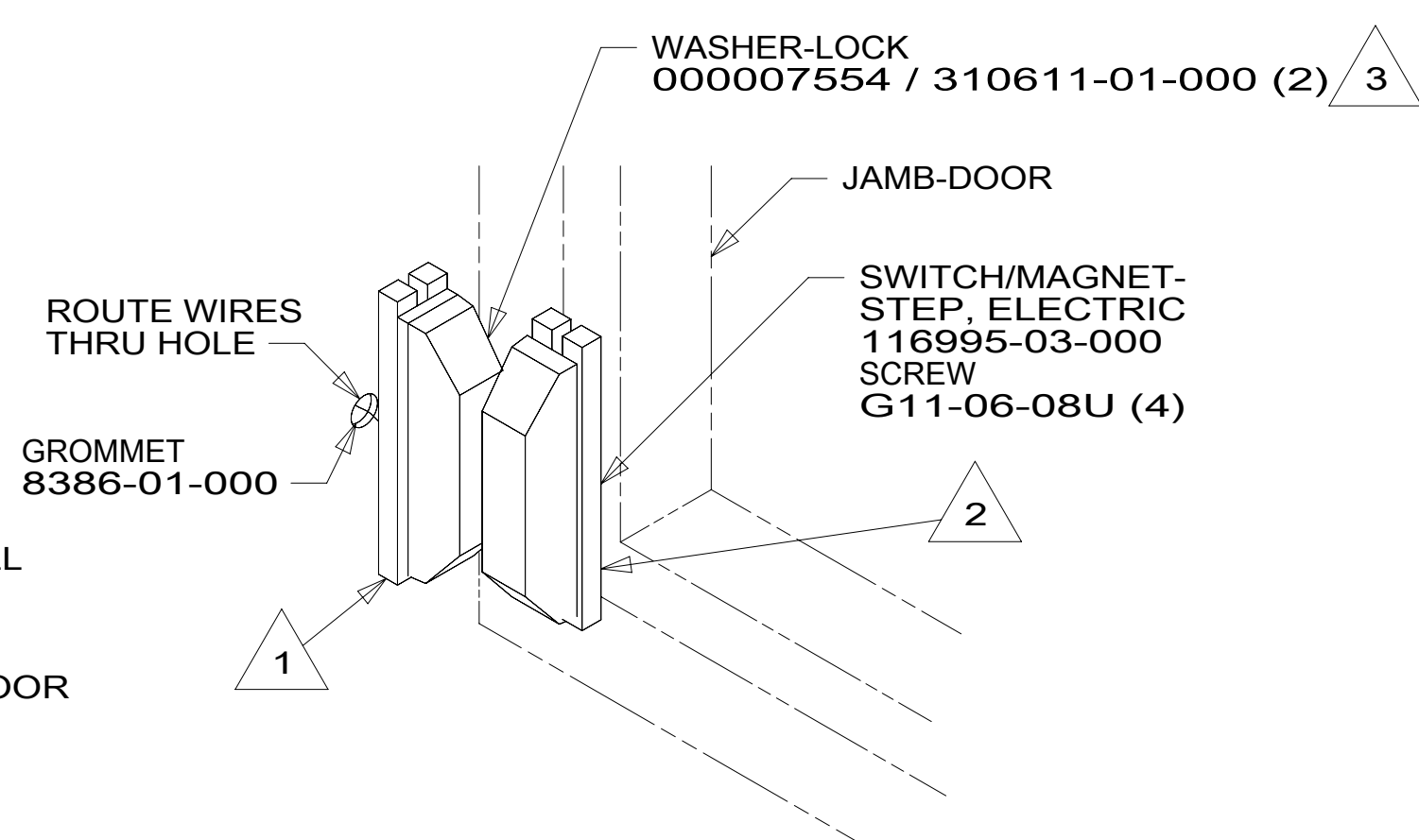


SWITCH-AWNING
108357-06-000
ACTUATOR-AWNING
108356-12-CHT
SWITCH-AWNING LIGHT
108357-14-000
ACTUATOR
108356-28-CHT
PLATE
158431-17-CHT
SCREW
G11-06-10U (4)

DETAIL DP

HOLDING TANK HEATER
TURN OFF When Not In Use
SEE OPERATORS MANUAL

DETAIL DD



WASHER-LOCK
000007554 / 310611-01-000 (2) 3

JAMB-DOOR
SWITCH/MAGNET-STEP, ELECTRIC
116995-03-000
SCREW
G11-06-08U (4)

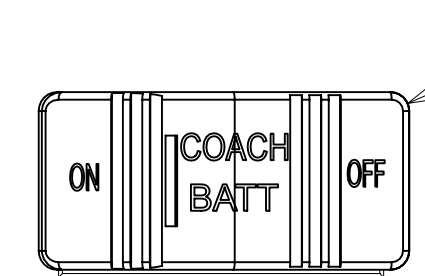
ROUTE WIRES THRU HOLE
GROMMET
8386-01-000

1

2

3

DETAIL DN



SWITCH-BATT DISC
108357-18-000
ACTUATOR-BATT DISC
108356-19-CHT
WIRE ASM-THERMISTOR
186796-01-000

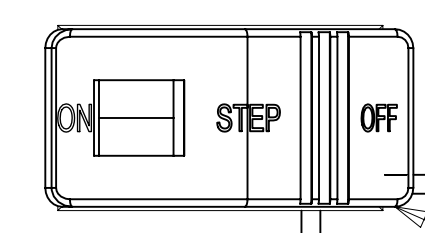
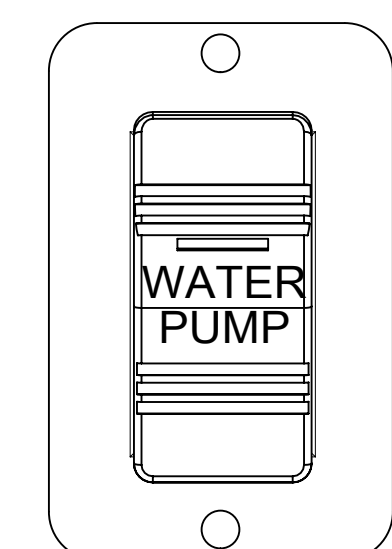


PLATE-SWITCH
158431-17-CHT
SCREW
G11-06-10U (4)

SWITCH-STEP
108357-19-000

DETAIL DL



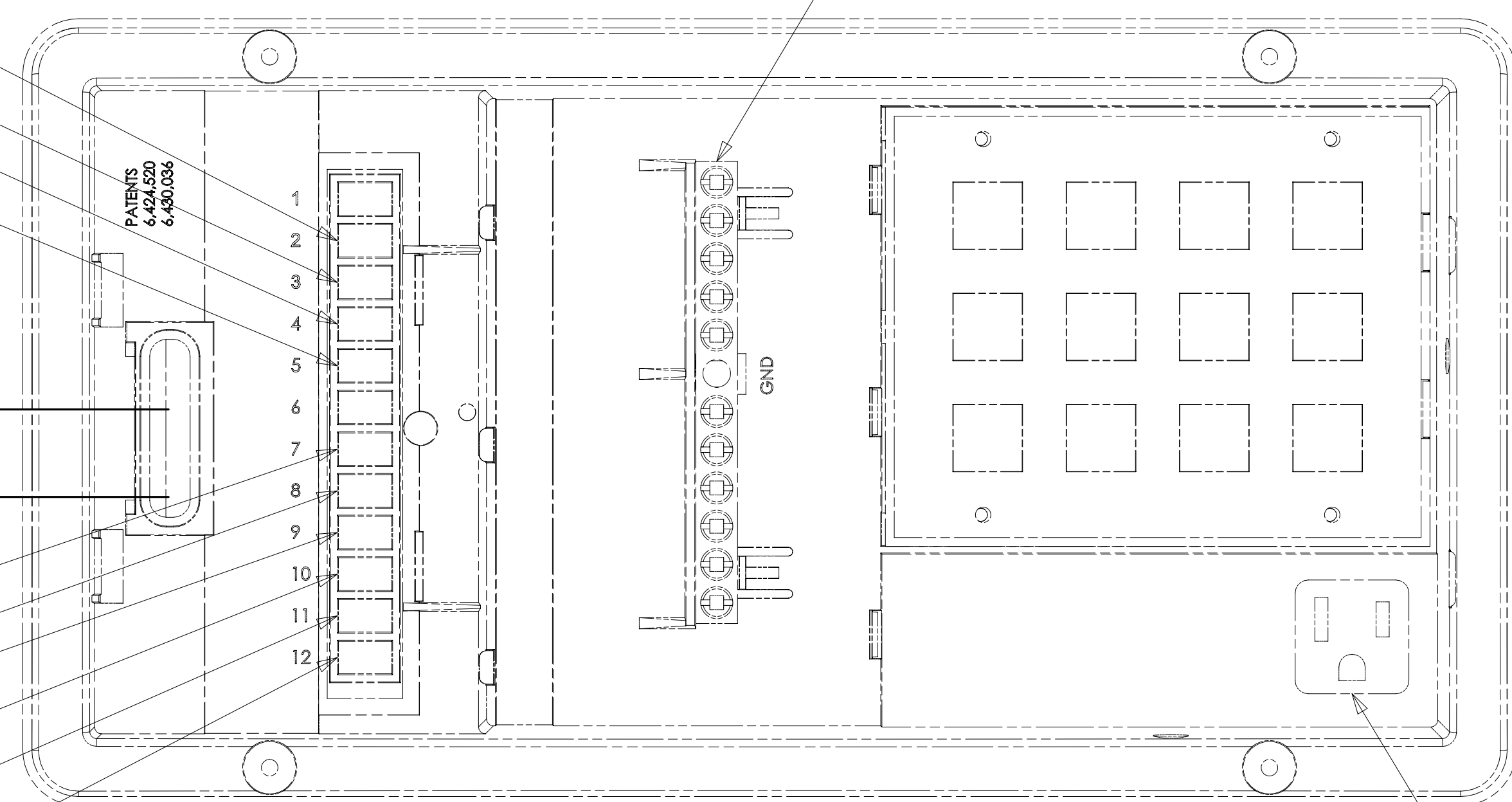
SWITCH-WATER PUMP
108357-21-000
ACTUATOR
108356-23-CHT
PLATE
144363-02-CHT
SCREW
G11-06-10U (2)

DETAIL DK

JA (2)
JB (3)
JG (4)
JC (5)

J (WIRE ASM-CHASSIS)
M (WIRE ASM-COACH)

JE (7)
NM (8)
JF (9)
ET (10)
WB (11)
FFZ (12)



VIEW DM

PLUG CONVERTER INTO OUTLET

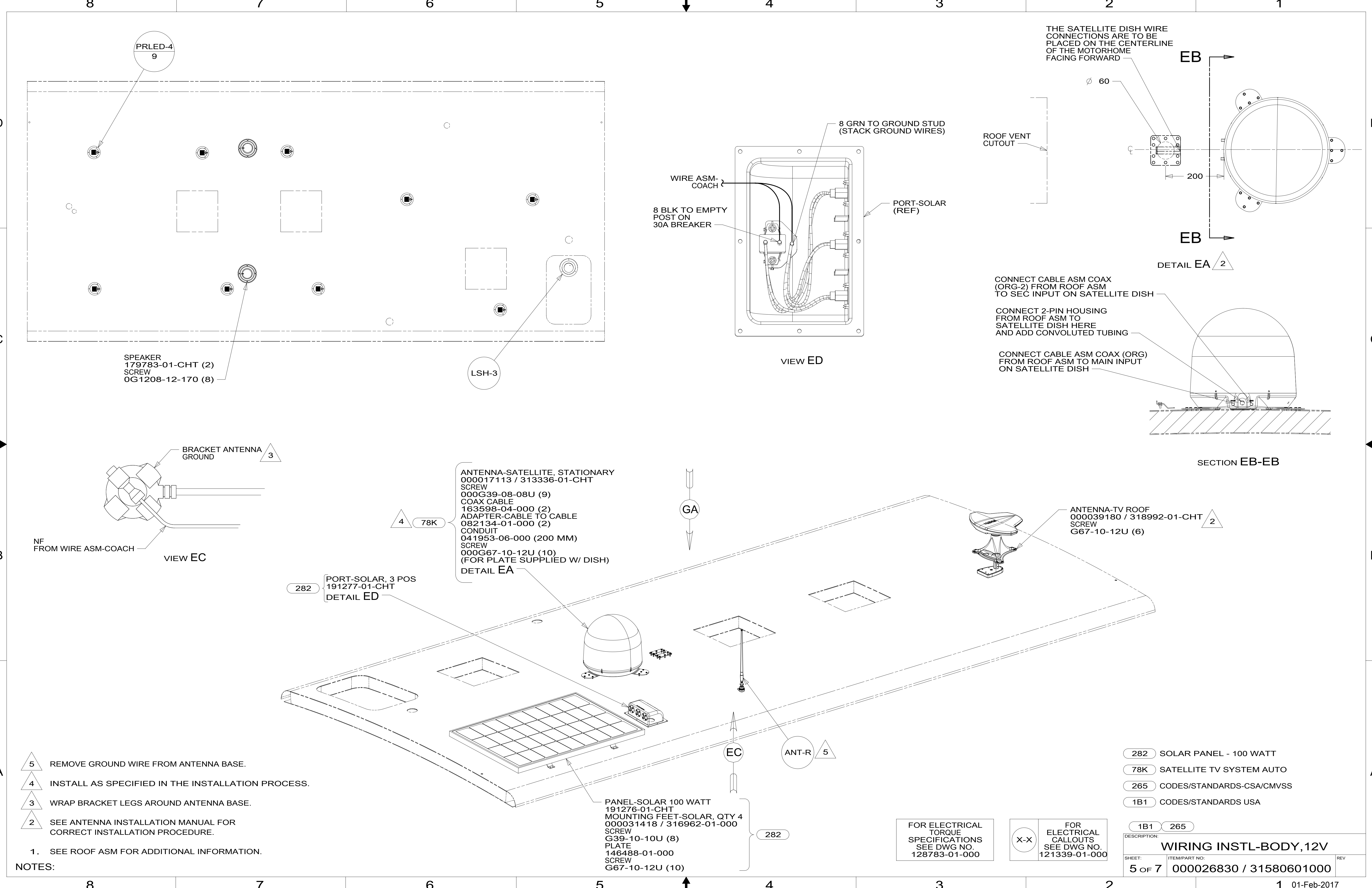
- NOTES:
- 3 REMOVE SCREWS FROM MAGNET SWITCH TO INSTALL LOCK WASHER AND RING TERMINALS.
 - 2 MOUNT MAGNET USING PILOT HOLES IN SCREEN DOOR FRAME. MOUNT WITH MAGNET TOWARD SWITCH.
 - 1 MOUNT SWITCH AND SPACER TO BLOCK ON JAMB. ADJUST HEIGHT TO MATCH MAGNET.

FOR ELECTRICAL TORQUE SPECIFICATIONS SEE DWG NO. 128783-01-000

FOR ELECTRICAL CALLOUTS SEE DWG NO. 121339-01-000

- 23R DRAINAGE SYSTEM/HEAT-PREWIRE
- 23T DRAINAGE SYSTEM-HEATED
- 265 CODES/STANDARDS-CSA/CMVSS
- 1B1 CODES/STANDARDS USA

DESCRIPTION:
WIRING INSTL-BODY, 12V
SHEET: 4 OF 7 ITEM/PART NO: 000026830 / 31580601000 REV



PRLED-4
9

SPEAKER
179783-01-CHT (2)
SCREW
0G1208-12-170 (8)

LSH-3

8 GRN TO GROUND STUD
(STACK GROUND WIRES)

WIRE ASM-
COACH

8 BLK TO EMPTY
POST ON
30A BREAKER

PORT-SOLAR
(REF)

VIEW ED

THE SATELLITE DISH WIRE
CONNECTIONS ARE TO BE
PLACED ON THE CENTERLINE
OF THE MOTORHOME
FACING FORWARD

ROOF VENT
CUTOUT

DETAIL EA 2

CONNECT CABLE ASM COAX
(ORG-2) FROM ROOF ASM
TO SEC INPUT ON SATELLITE DISH

CONNECT 2-PIN HOUSING
FROM ROOF ASM TO
SATELLITE DISH HERE
AND ADD CONVOLUTED TUBING

CONNECT CABLE ASM COAX (ORG)
FROM ROOF ASM TO MAIN INPUT
ON SATELLITE DISH

SECTION EB-EB

BRACKET ANTENNA
GROUND 3

NF
FROM WIRE ASM-COACH

VIEW EC

ANTENNA-SATELLITE, STATIONARY
000017113 / 313336-01-CHT
SCREW
000G39-08-08U (9)
COAX CABLE
163598-04-000 (2)
ADAPTER-CABLE TO CABLE
082134-01-000 (2)
CONDUIT
041953-06-000 (200 MM)
SCREW
000G67-10-12U (10)
(FOR PLATE SUPPLIED W/ DISH)
DETAIL EA

282 PORT-SOLAR, 3 POS
191277-01-CHT
DETAIL ED

ANTENNA-TV ROOF
000039180 / 318992-01-CHT
SCREW
G67-10-12U (6)

PANEL-SOLAR 100 WATT
191276-01-CHT
MOUNTING FEET-SOLAR, QTY 4
000031418 / 316962-01-000
SCREW
G39-10-10U (8)
PLATE
146488-01-000
SCREW
G67-10-12U (10)

FOR ELECTRICAL
TORQUE
SPECIFICATIONS
SEE DWG NO.
128783-01-000

FOR
ELECTRICAL
CALLOUTS
SEE DWG NO.
121339-01-000

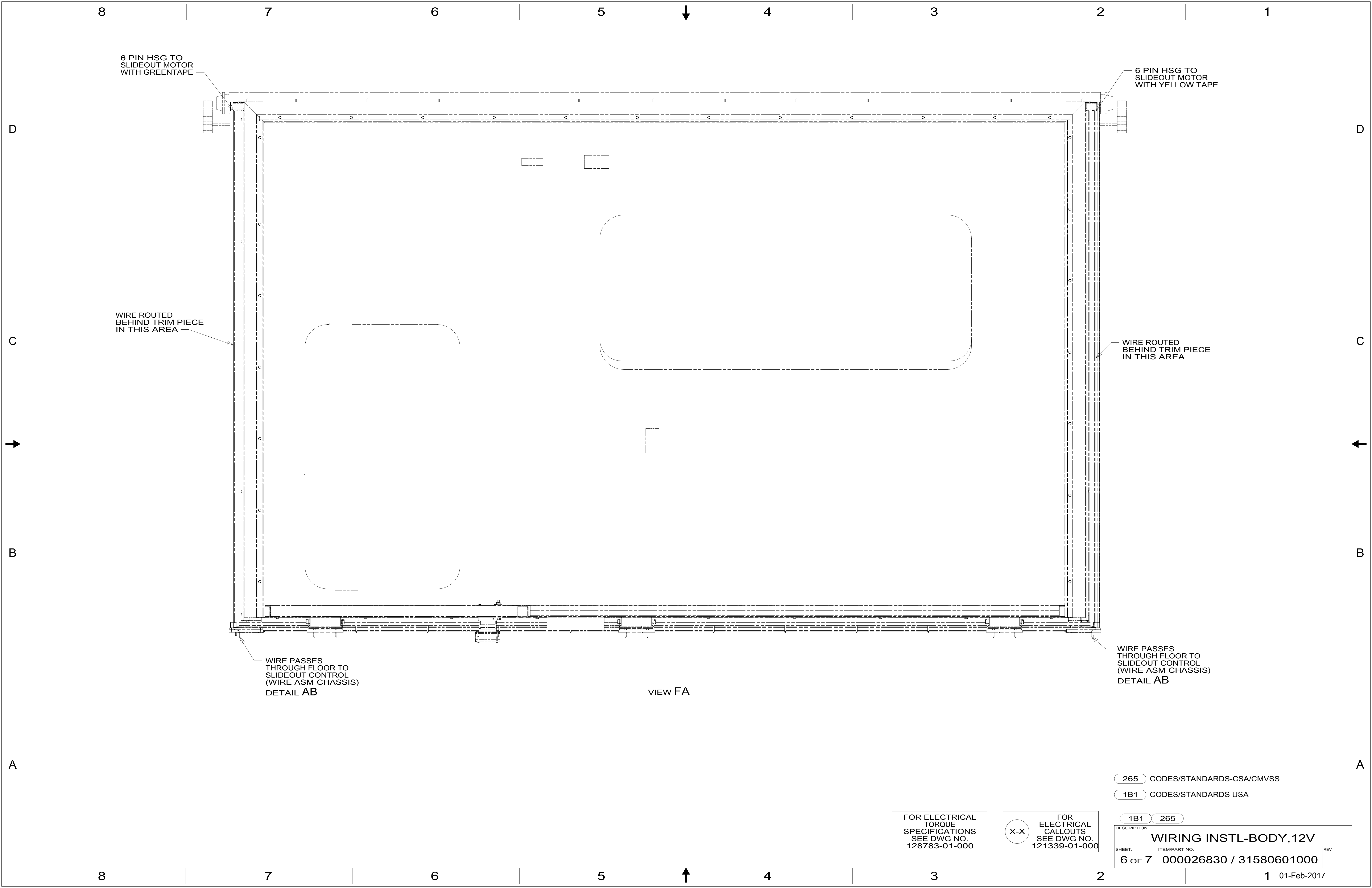
- 282 SOLAR PANEL - 100 WATT
- 78K SATELLITE TV SYSTEM AUTO
- 265 CODES/STANDARDS-CSA/CMVSS
- 1B1 CODES/STANDARDS USA

- 5 REMOVE GROUND WIRE FROM ANTENNA BASE.
- 4 INSTALL AS SPECIFIED IN THE INSTALLATION PROCESS.
- 3 WRAP BRACKET LEGS AROUND ANTENNA BASE.
- 2 SEE ANTENNA INSTALLATION MANUAL FOR CORRECT INSTALLATION PROCEDURE.

1. SEE ROOF ASM FOR ADDITIONAL INFORMATION.

NOTES:

DESCRIPTION: WIRING INSTL-BODY, 12V		
SHEET: 5 OF 7	ITEM/PART NO: 000026830 / 31580601000	REV



6 PIN HSG TO SLIDEOUT MOTOR WITH GREENTAPE

6 PIN HSG TO SLIDEOUT MOTOR WITH YELLOW TAPE

WIRE ROUTED BEHIND TRIM PIECE IN THIS AREA

WIRE ROUTED BEHIND TRIM PIECE IN THIS AREA

WIRE PASSES THROUGH FLOOR TO SLIDEOUT CONTROL (WIRE ASM-CHASSIS) DETAIL AB

WIRE PASSES THROUGH FLOOR TO SLIDEOUT CONTROL (WIRE ASM-CHASSIS) DETAIL AB

VIEW FA

- 265 CODES/STANDARDS-CSA/CMVSS
- 1B1 CODES/STANDARDS USA

FOR ELECTRICAL TORQUE SPECIFICATIONS SEE DWG NO. 128783-01-000

FOR ELECTRICAL CALLOUTS SEE DWG NO. 121339-01-000

DESCRIPTION: WIRING INSTL-BODY, 12V		
SHEET: 6 OF 7	ITEM/PART NO: 000026830 / 31580601000	REV

8 7 6 5 4 3 2 1



D

D

C

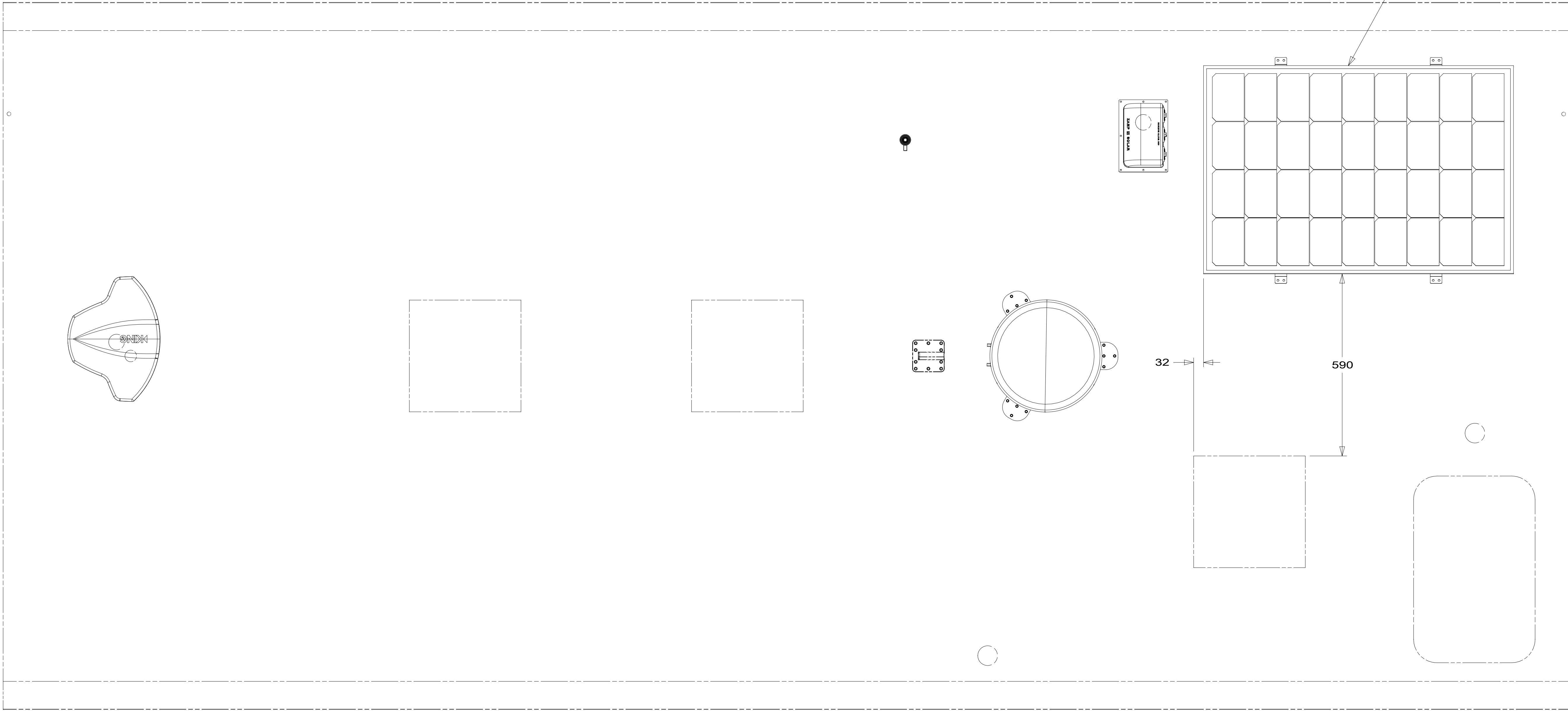
C

B

B

A

A



282

32

590

FOR ELECTRICAL
TORQUE
SPECIFICATIONS
SEE DWG NO.
128783-01-000

FOR
ELECTRICAL
CALLOUTS
SEE DWG NO.
121339-01-000

- 282 SOLAR PANEL - 100 WATT
- 265 CODES/STANDARDS-CSA/CMVSS
- 1B1 CODES/STANDARDS USA

DESCRIPTION: WIRING INSTL-BODY, 12V	
SHEET: 7 OF 7	ITEM/PART NO: 000026830 / 31580601000
REV 1 01-Feb-2017	

8 7 6 5 4 3 2 1

