

8 7 6 5 4 3 2 1

D

D

C

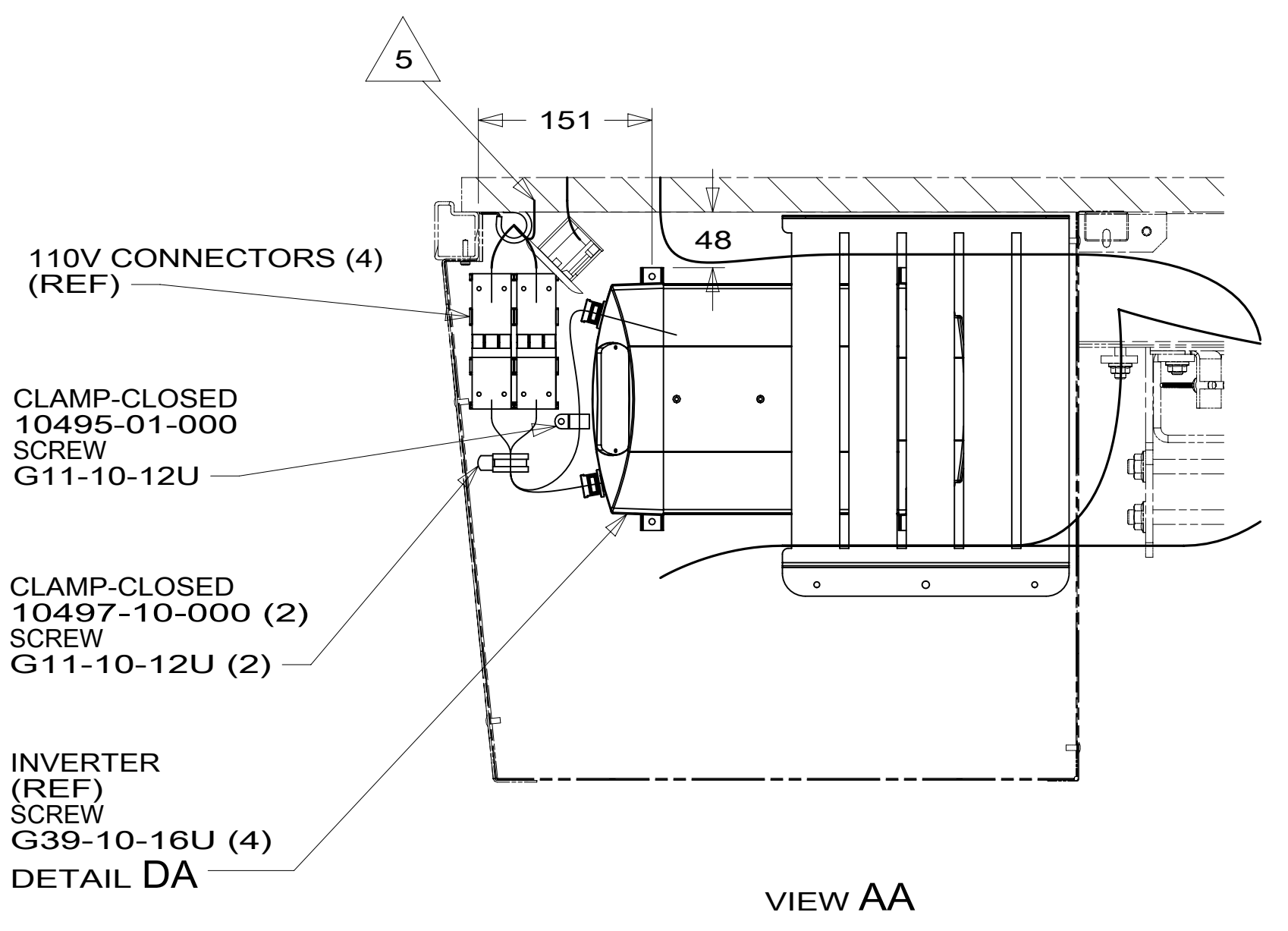
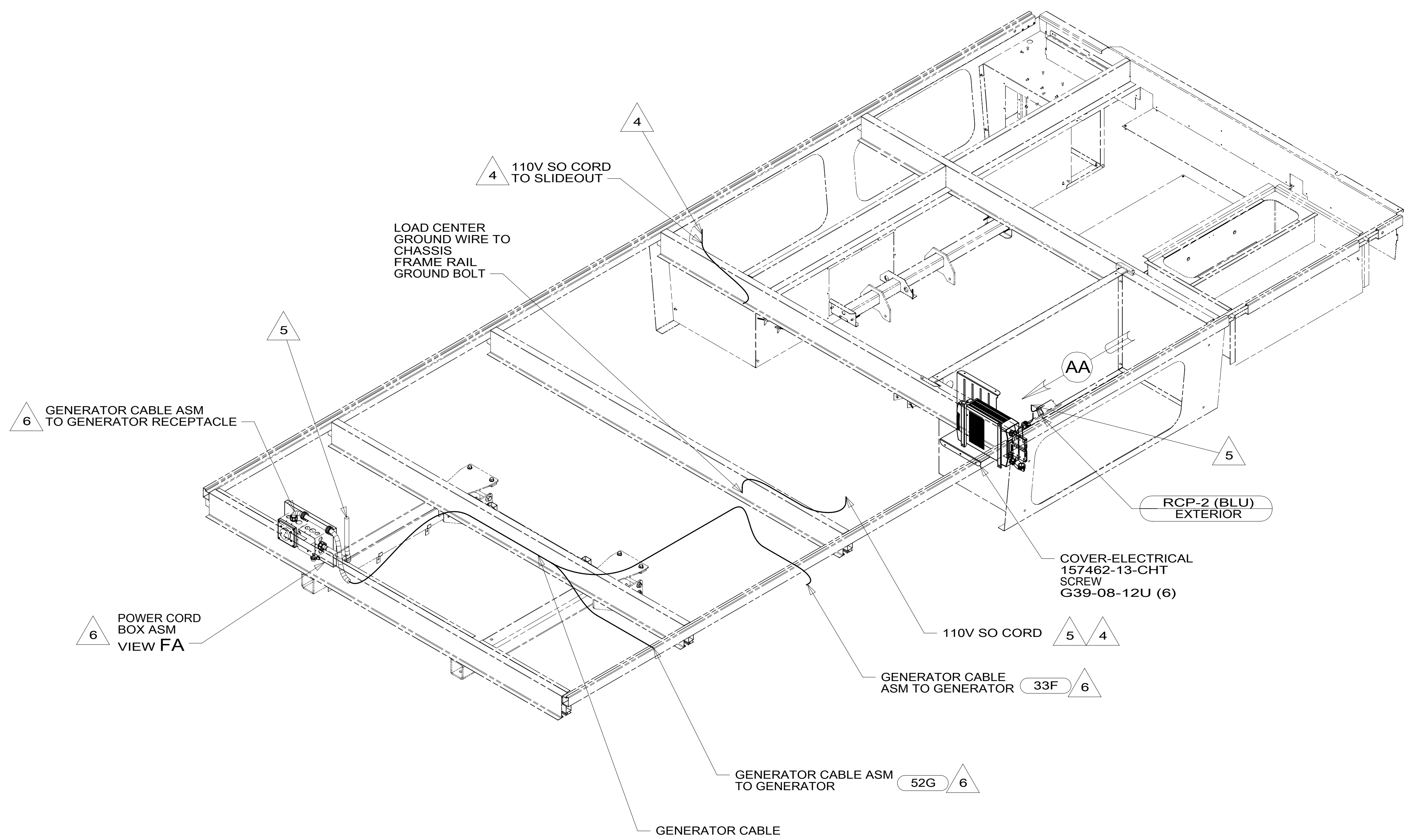
C

B

B

A

A



- NOTES:
- 6 SEE GENERATOR INSTL FOR ADDITIONAL INFORMATION.
 - 5 WIRES ROUTED THROUGH FLOOR IN THIS AREA.
 - 4 SLIDEOUT WIRE IS PART OF WIRE ASM-CHASSIS.
 - 3. ALL GROUND WIRES TO BE COVERED WITH TUBING 8041-02-000.
 - 2. ALL 110V WIRE ARE TO BE CLAMPED WITH CLAMP 10495-01-000 WITHIN 200MM OF OUTLET BOXES, USE SCREW G67-10-12B.
 - 1. ALL WIRES TO BE SECURED WITH CLAMP 10495-01-000 OR CLIP 80734-01-000 EVERY 600MM. USE SCREW G67-10-12B UNLESS OTHERWISE SPECIFIED.

FOR ELECTRICAL TORQUE SPECIFICATIONS SEE DWG NO. 128783-01-000

FOR ELECTRICAL CALLOUTS SEE DWG NO. 121339-01-000

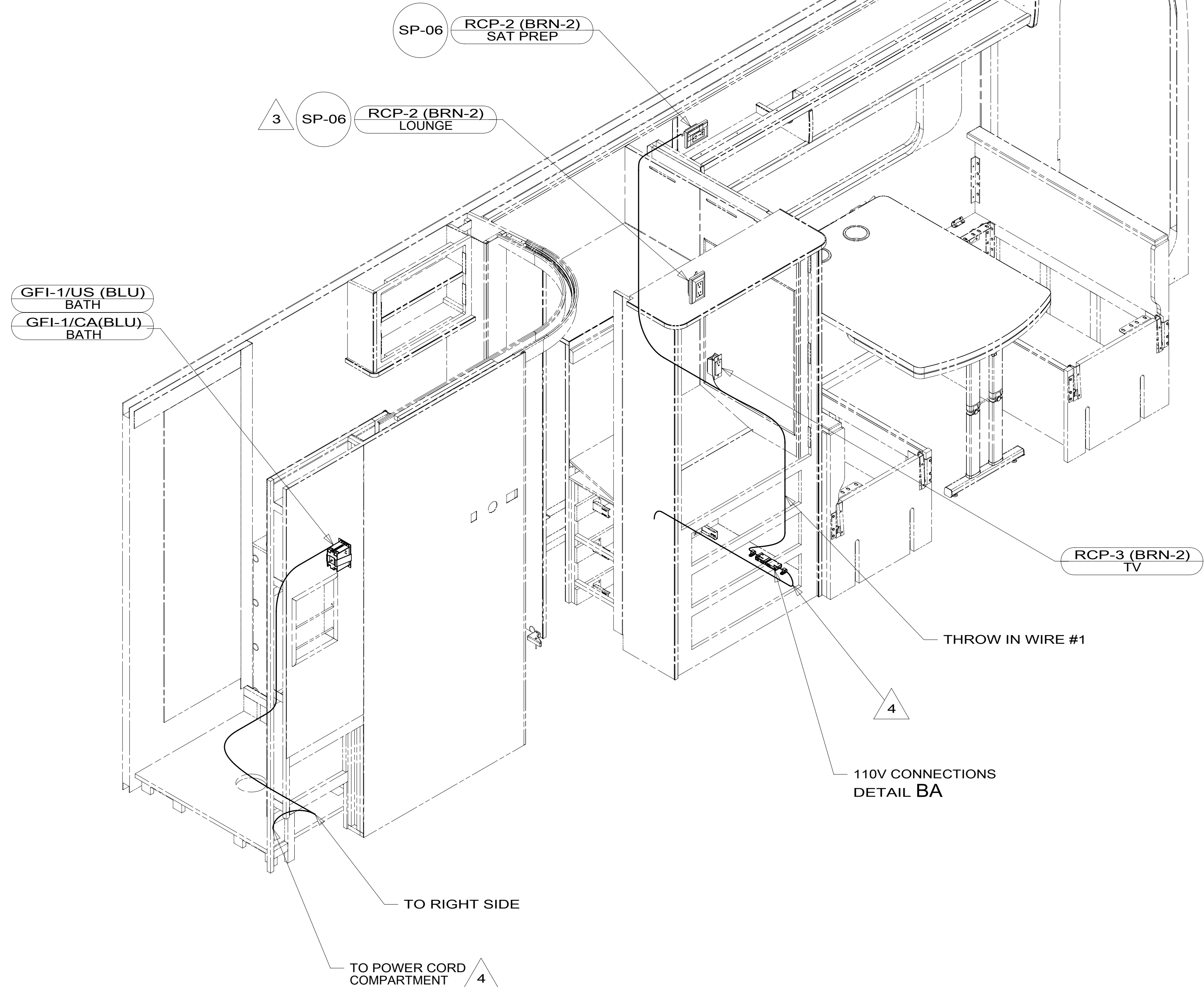
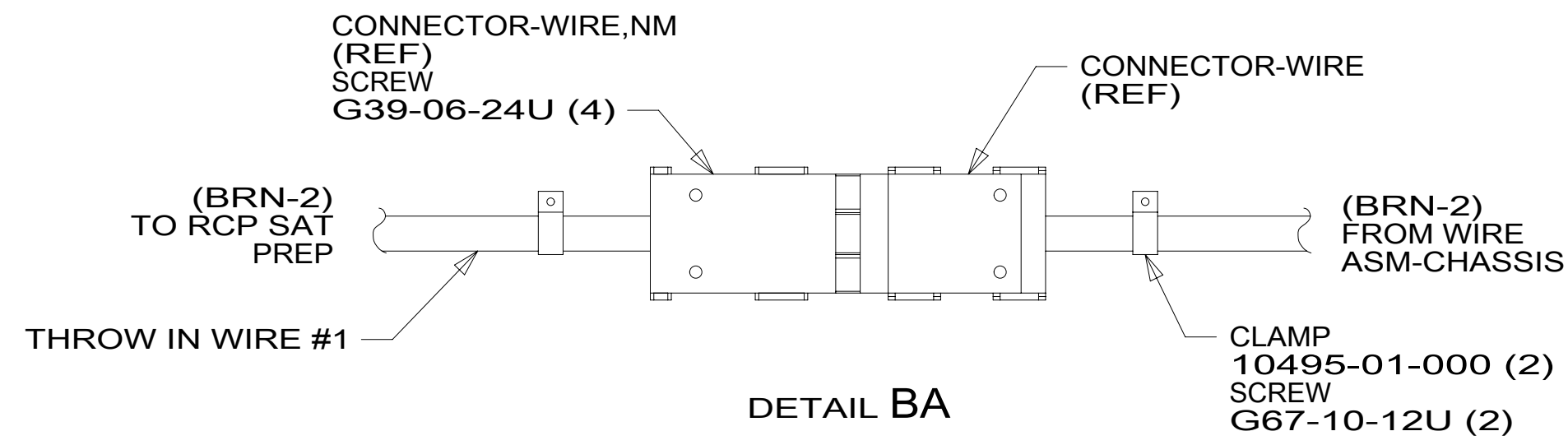
- 52G GEN-3.6KW ONAN LP MICROQUIET
- 33F GEN-3.2 KW ONAN DIESEL
- 265 CODES/STANDARDS-CSA-CMVSS
- 1B1 CODES/STANDARDS USA

1B1 265

WINNEBAGO
COPYRIGHT 2016 WINNEBAGO INDUSTRIES, INC.

DSNR:	ALL DIMENSIONS ARE IN MILLIMETERS
DfFR:	
UNSPECIFIED TOLERANCES:	MATERIAL:
WHOLE DIM (X) : 3	
ONE-PLACE (X.X) : 1.5	
TWO-PLACE (X.XX) : 0.50	
ANGLE : 1°	
REFER TO ES0018 FOR FASTENER TIGHTENING GUIDELINES	WEIGHT: (LBS) FIRST USED:
	17 H25P
DESCRIPTION: WIRING INSTL-BODY, 110V	
SHEET: 1 OF 7	ITEM/PART NO: 000026812 / 31580501000
REF:	1 01-Feb-2017

8 7 6 5 4 3 2 1



- 4 WIRE ROUTED THRU FLOOR AT THIS POINT
- 3 WIRE ROUTED IN SIDEWALL.

- 2. ALL 110V WIRE TO BE CLAMPED WITH CLAMP 10497-05-000 WITHIN 200 OF OUTLET BOXES, USE SCREW G67-10-12U.
- 1. ALL WIRES TO BE SECURED WITH CLAMP 10495-01-000 OR CLIP 80734-01-000 EVERY 600MM. USE SCREW G67-10-12B UNLESS OTHERWISE SPECIFIED.

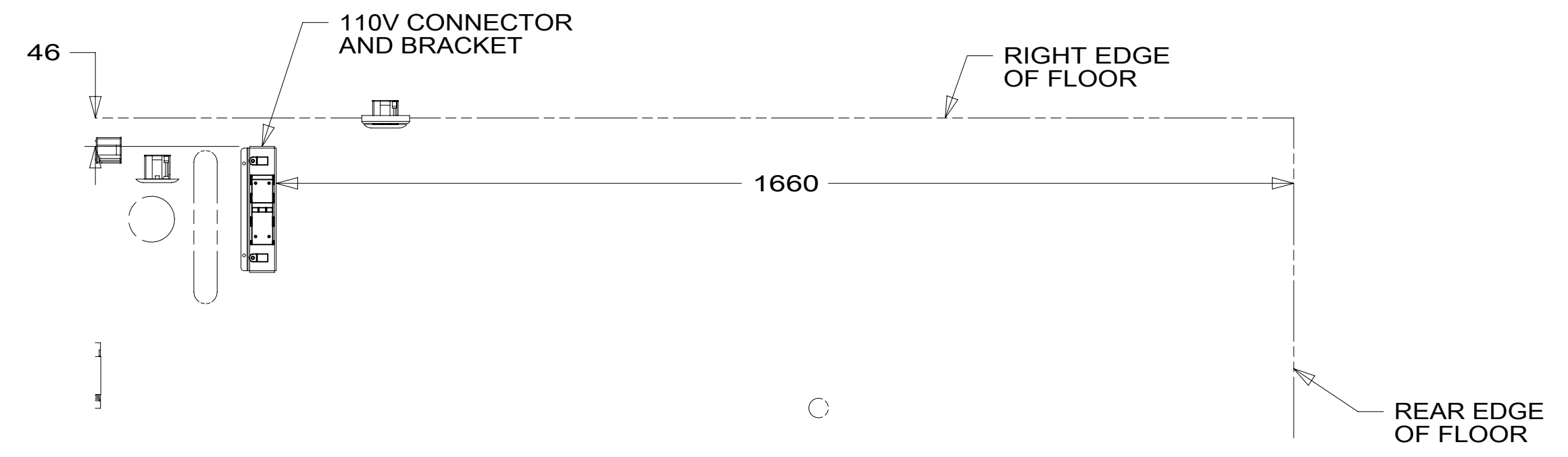
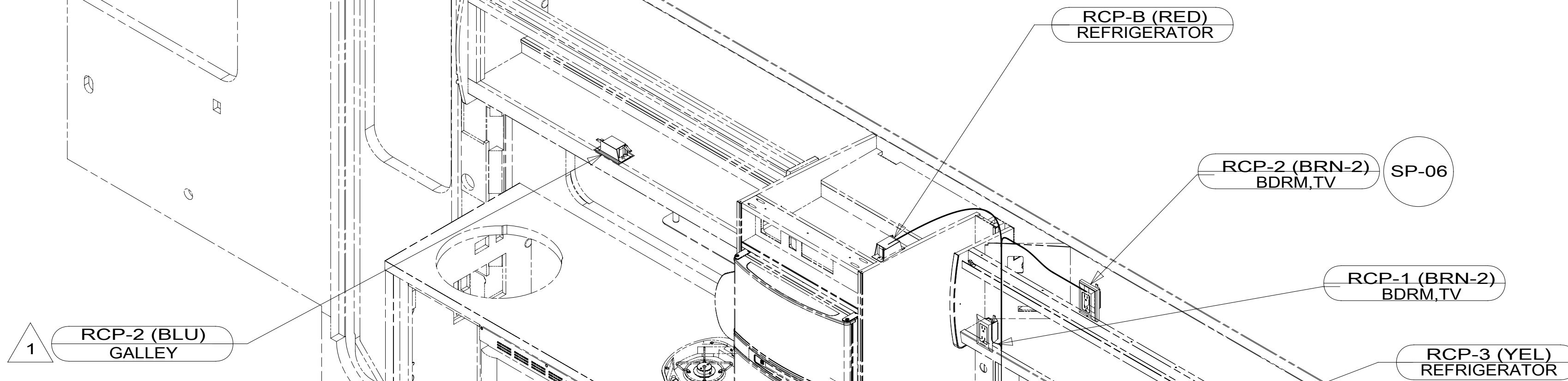
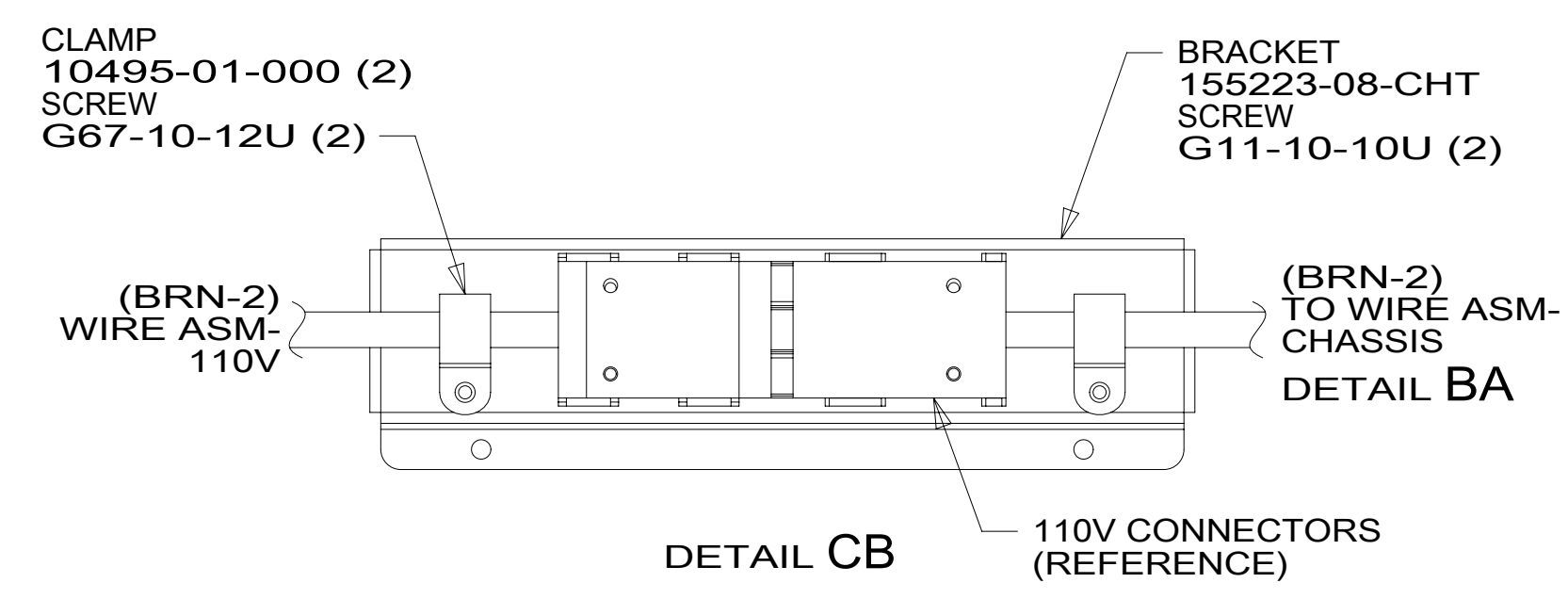
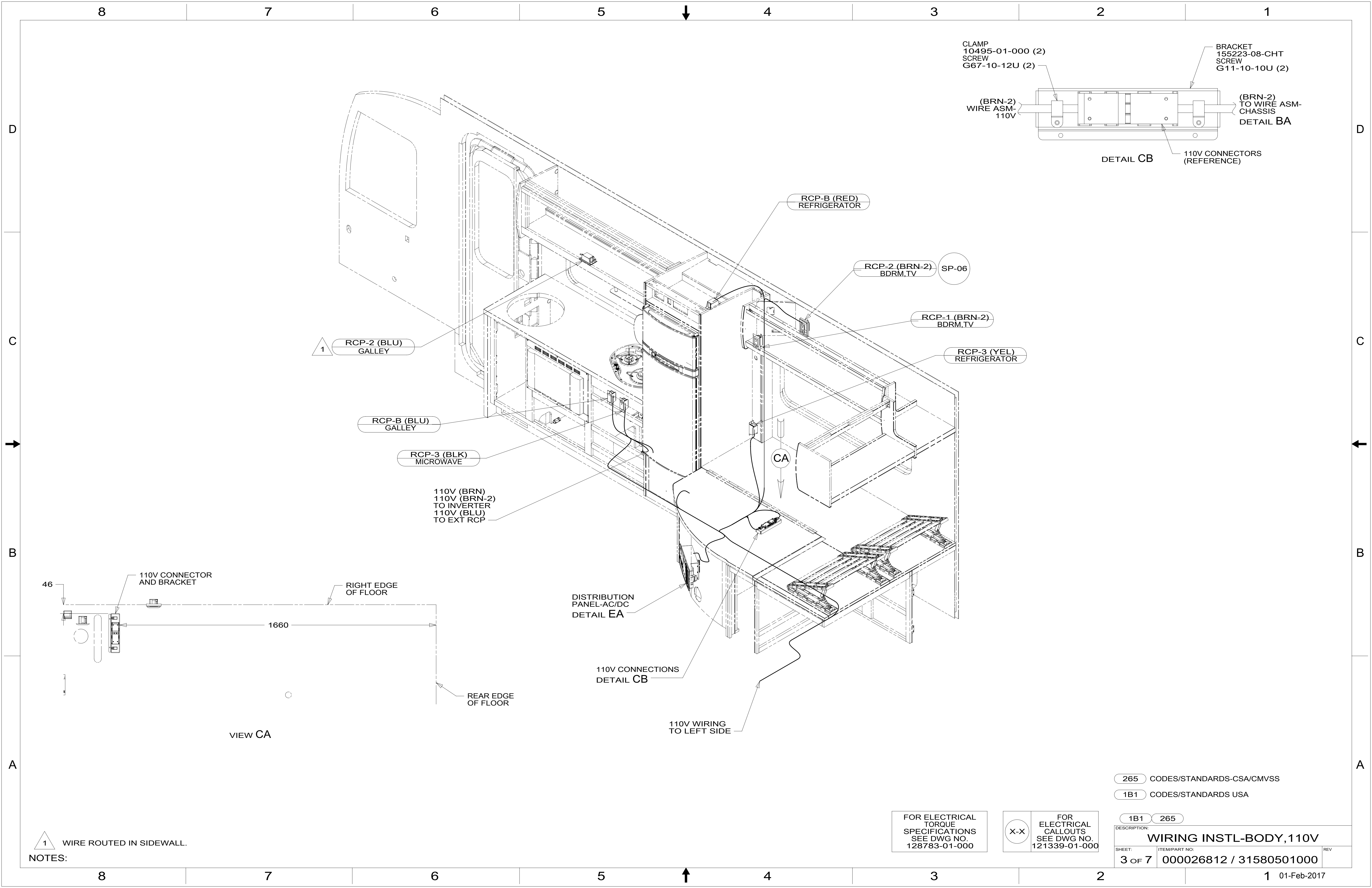
NOTES:

FOR ELECTRICAL TORQUE SPECIFICATIONS SEE DWG NO. 128783-01-000

FOR ELECTRICAL CALLOUTS SEE DWG NO. 121339-01-000

265 CODES/STANDARDS-CSA/CMVSS
1B1 CODES/STANDARDS USA

DESCRIPTION:		1B1 265
WIRING INSTL-BODY, 110V		
SHEET:	ITEM/PART NO.:	REV
2 OF 7	000026812 / 31580501000	



DISTRIBUTION PANEL-AC/DC
DETAIL EA

110V CONNECTIONS
DETAIL CB

110V WIRING
TO LEFT SIDE

110V (BRN)
110V (BRN-2)
TO INVERTER
110V (BLU)
TO EXT RCP

VIEW CA

NOTES:
1 WIRE ROUTED IN SIDEWALL.

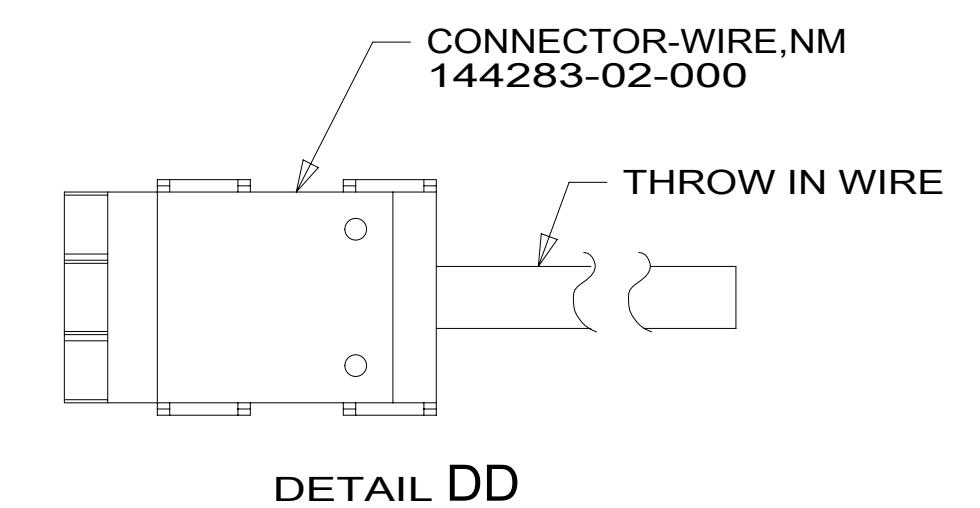
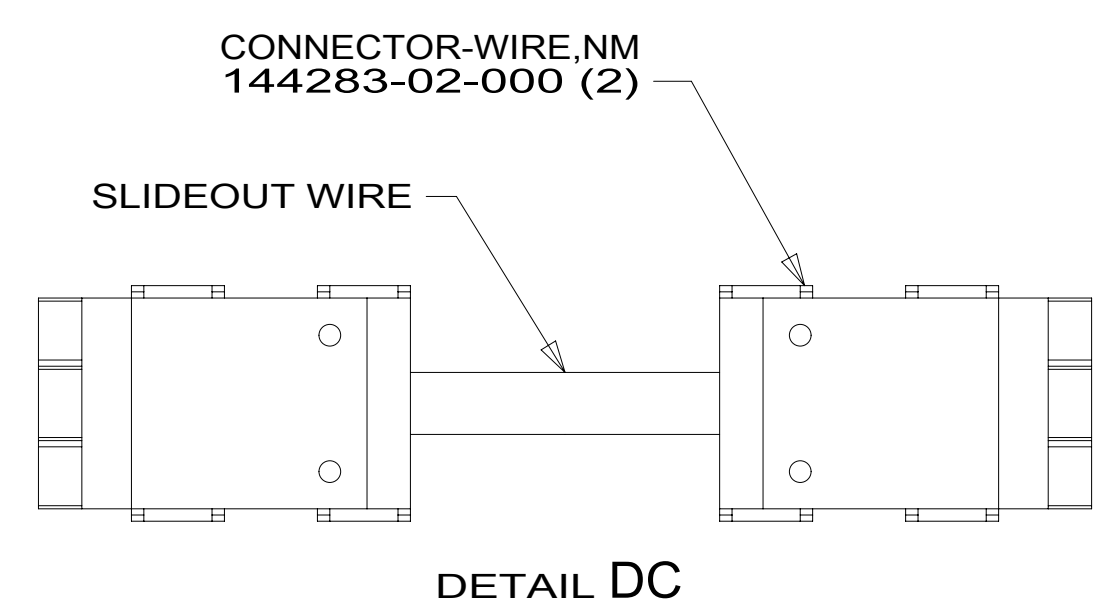
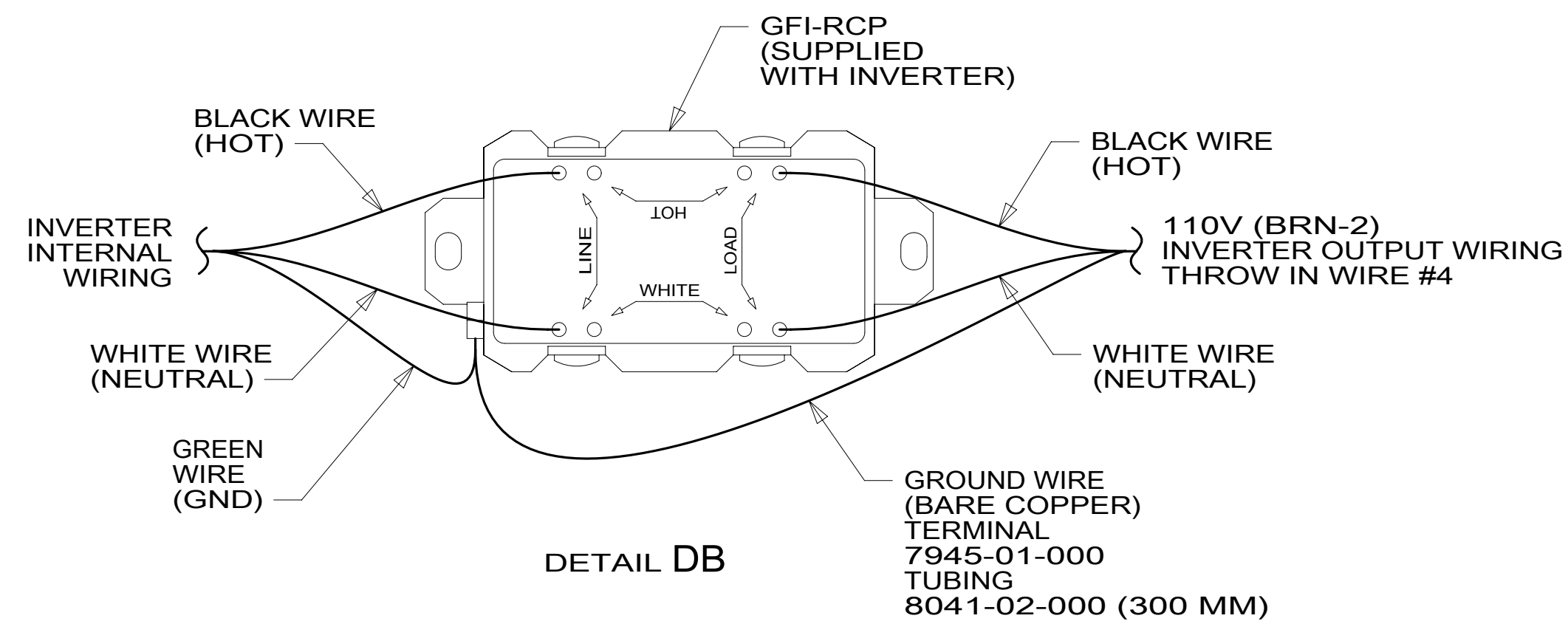
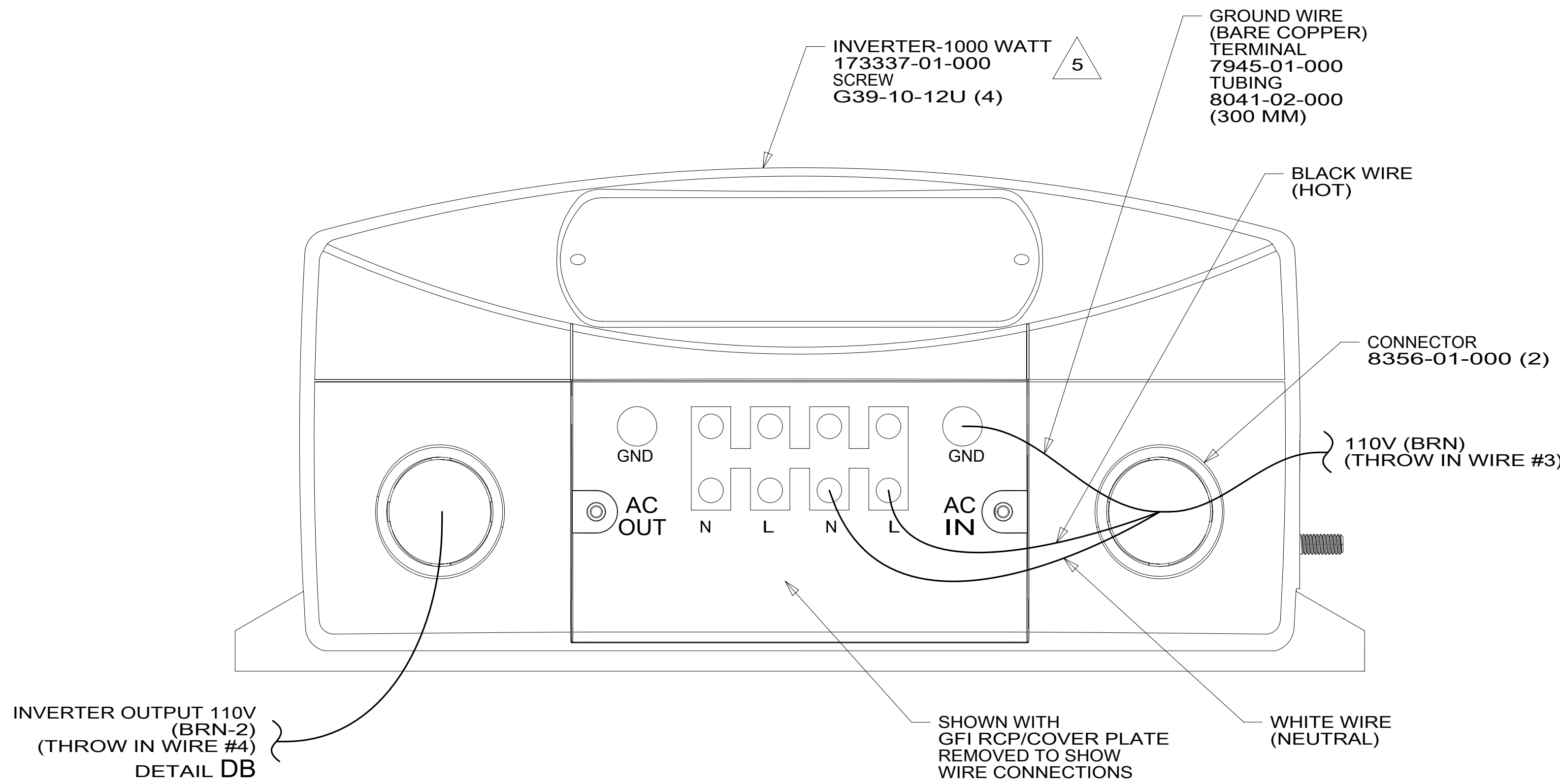
265 CODES/STANDARDS-CSA/CMVSS
1B1 CODES/STANDARDS USA

FOR ELECTRICAL
TORQUE
SPECIFICATIONS
SEE DWG NO.
128783-01-000

FOR ELECTRICAL
CALLOUTS
SEE DWG NO.
121339-01-000

DESCRIPTION:	
1B1 265	
WIRING INSTL-BODY, 110V	
SHEET:	ITEM/PART NO. REV
3 OF 7	000026812 / 31580501000

GROUND		136145-02-020	
GENERATOR CABLE ASM	1B1	164957-01-050	33F
	265	164957-03-050	33F
THROW IN WIRE #1	1B1	136131-19-036	2
	265	136134-19-036	2
THROW IN WIRE #3	1B1	136131-03-003	2 3
	265	136134-03-003	2 3
THROW IN WIRE #4	1B1	136131-19-005	2 3
	265	136134-19-005	2 3
THROW IN WIRE #5	1B1	136131-19-070	4
	265	136134-19-070	4
RED	1B1	136135-07-040	
	265	136136-07-040	
YEL	1B1	136131-05-018	
	265	136134-05-018	
BLK	1B1	136135-06-038	
	265	136136-06-038	
BLU	1B1	136131-02-135	
	265	136134-02-135	
BRN	1B1	136131-03-030	2
	265	136134-03-030	2
MAIN	1B1	136137-01-040	
	265	136138-01-040	

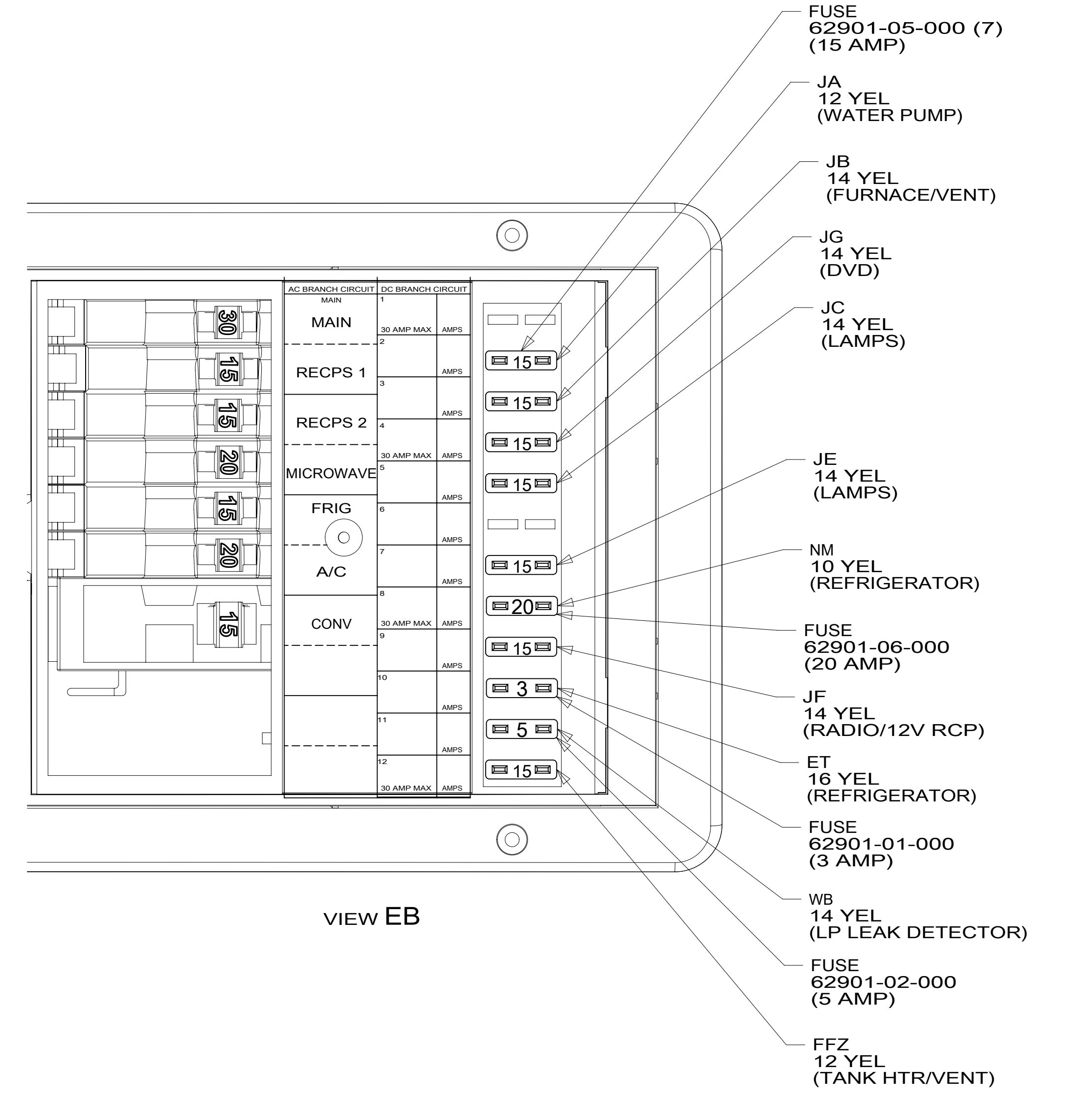
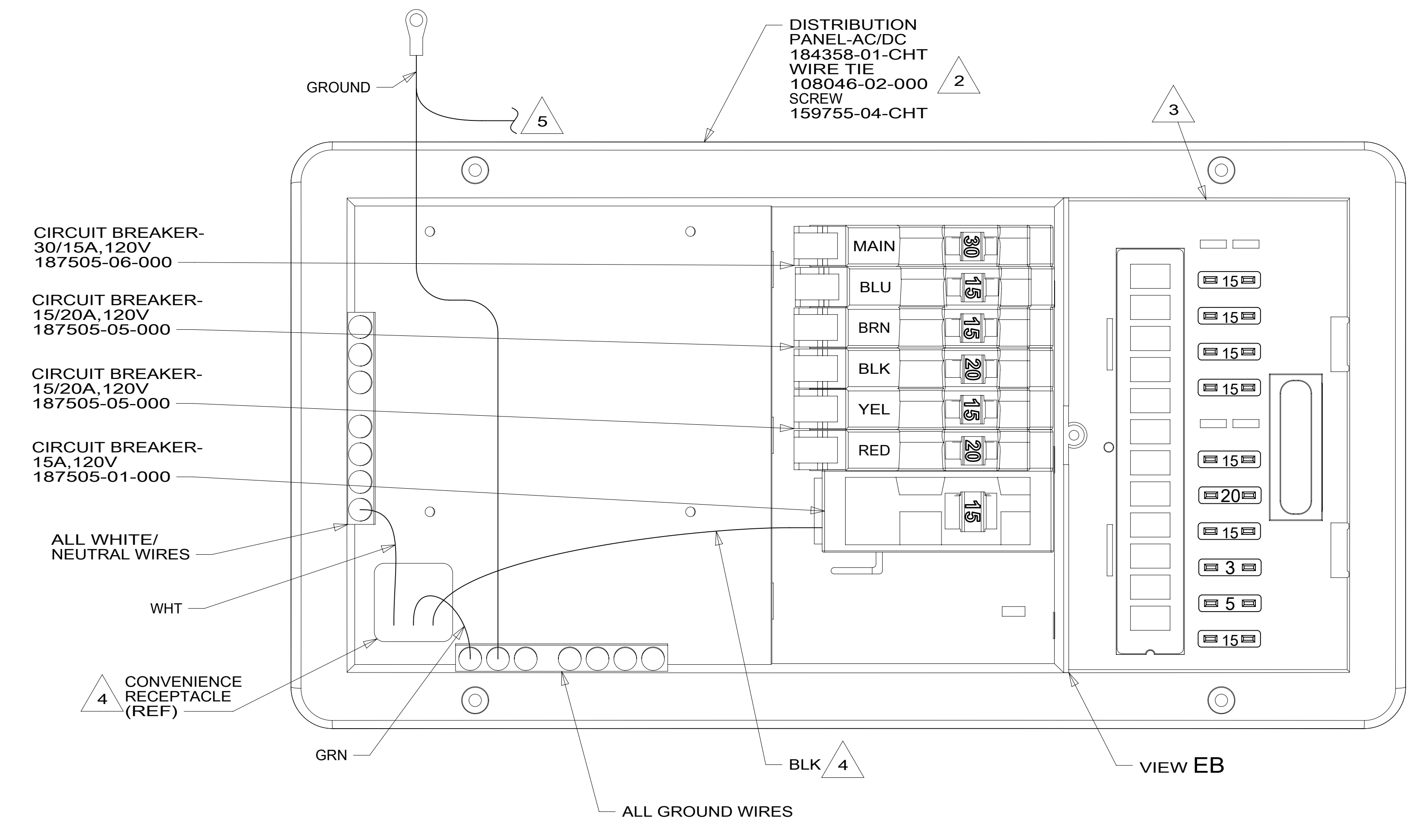
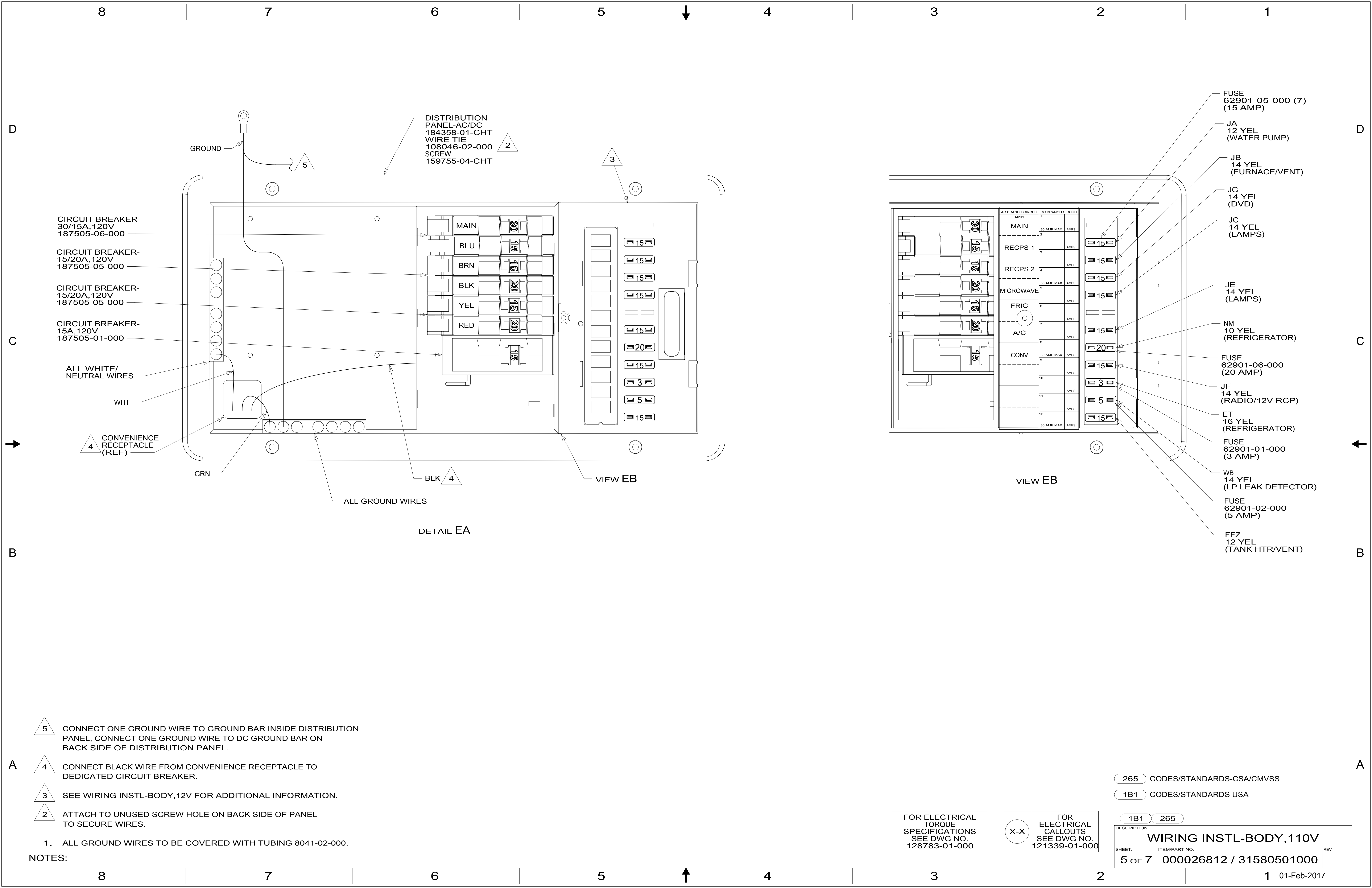


- 5 INVERTER SUPPLIED WITH REMOTE PANEL. SEND PANEL TO MANUFACTURING LINE.
- 4 FOR CONNECTOR INSTALLATION SEE DETAIL DC.
- 3 FOR ADDITIONAL INFORMATION SEE DETAIL DA.
- 2 FOR CONNECTOR INSTALLATION SEE DETAIL DD.
1. ALL GROUND WIRES TO BE COVERED WITH TUBING 8041-02-000.
- NOTES:

FOR ELECTRICAL TORQUE SPECIFICATIONS SEE DWG NO. 128783-01-000

FOR ELECTRICAL CALLOUTS SEE DWG NO. 121339-01-000

33F	GEN-3.5 KW ONAN DIESEL
265	CODES/STANDARDS-CSA/CMVSS
1B1	CODES/STANDARDS USA
1B1	265
DESCRIPTION: WIRING INSTL-BODY, 110V	
SHEET: 4 OF 7	ITEM/PART NO: 000026812 / 31580501000
REV 1 01-Feb-2017	



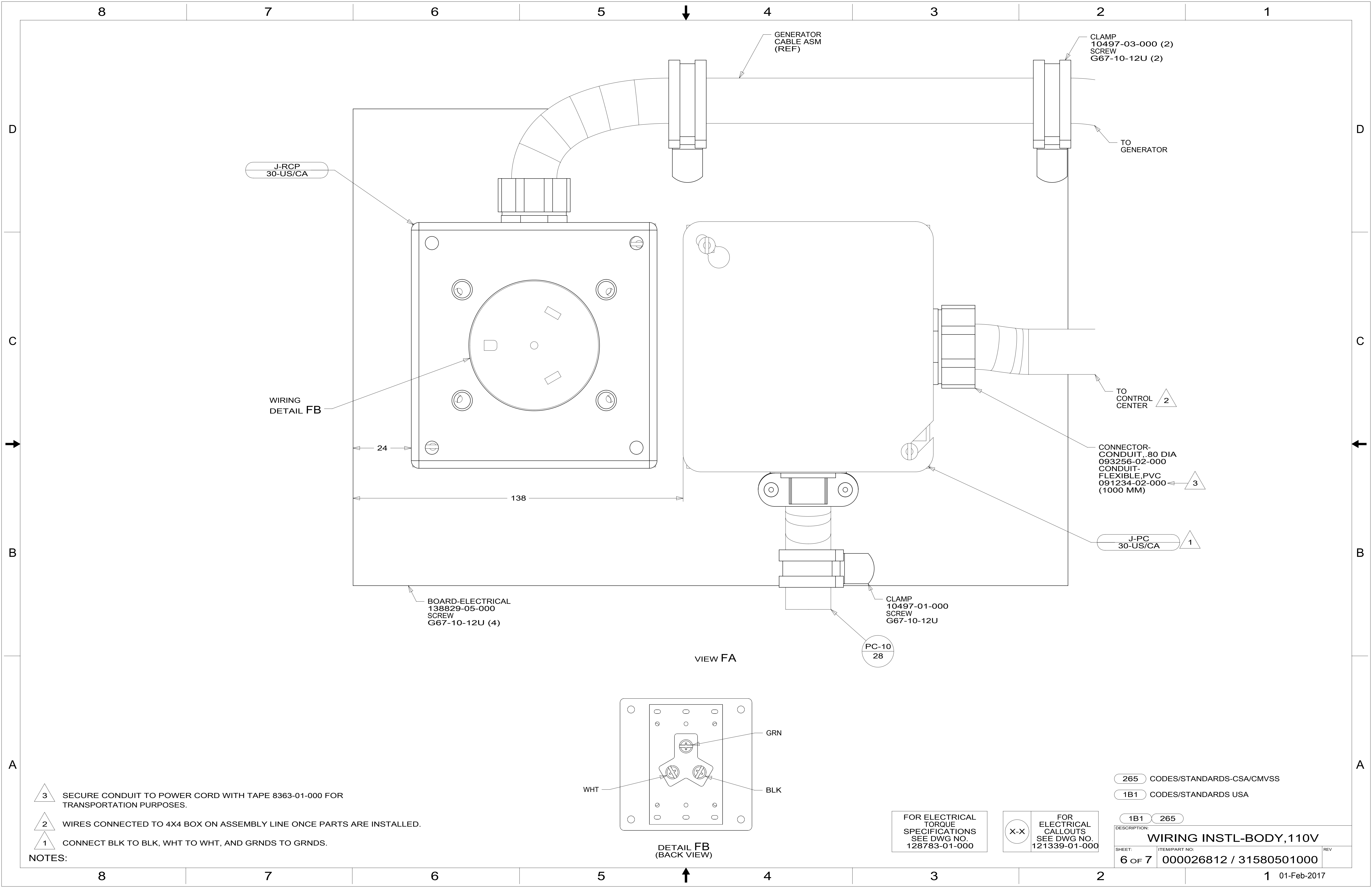
- NOTES:**
- 1. ALL GROUND WIRES TO BE COVERED WITH TUBING 8041-02-000.
 - 2. ATTACH TO UNUSED SCREW HOLE ON BACK SIDE OF PANEL TO SECURE WIRES.
 - 3. SEE WIRING INSTL-BODY, 12V FOR ADDITIONAL INFORMATION.
 - 4. CONNECT BLACK WIRE FROM CONVENIENCE RECEPTACLE TO DEDICATED CIRCUIT BREAKER.
 - 5. CONNECT ONE GROUND WIRE TO GROUND BAR INSIDE DISTRIBUTION PANEL, CONNECT ONE GROUND WIRE TO DC GROUND BAR ON BACK SIDE OF DISTRIBUTION PANEL.

265 CODES/STANDARDS-CSA/CMVSS
 1B1 CODES/STANDARDS USA

FOR ELECTRICAL TORQUE SPECIFICATIONS SEE DWG NO. 128783-01-000

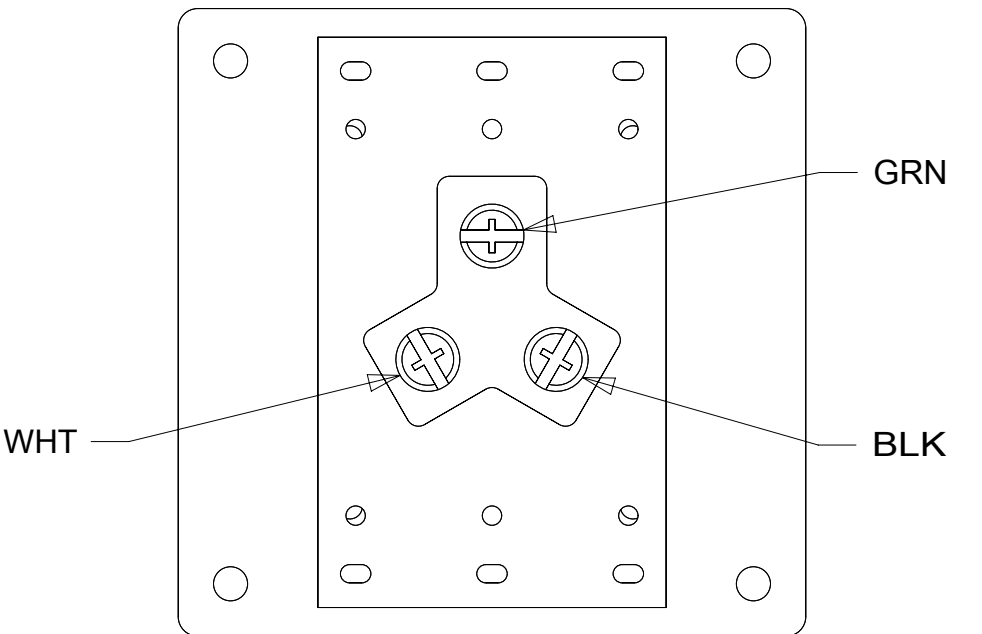
FOR ELECTRICAL CALLOUTS SEE DWG NO. 121339-01-000

DESCRIPTION:		1B1	265
WIRING INSTL-BODY, 110V			
SHEET:	ITEM/PART NO.:	REV	
5 OF 7	000026812 / 31580501000		



WIRING
DETAIL FB

VIEW FA



DETAIL FB
(BACK VIEW)

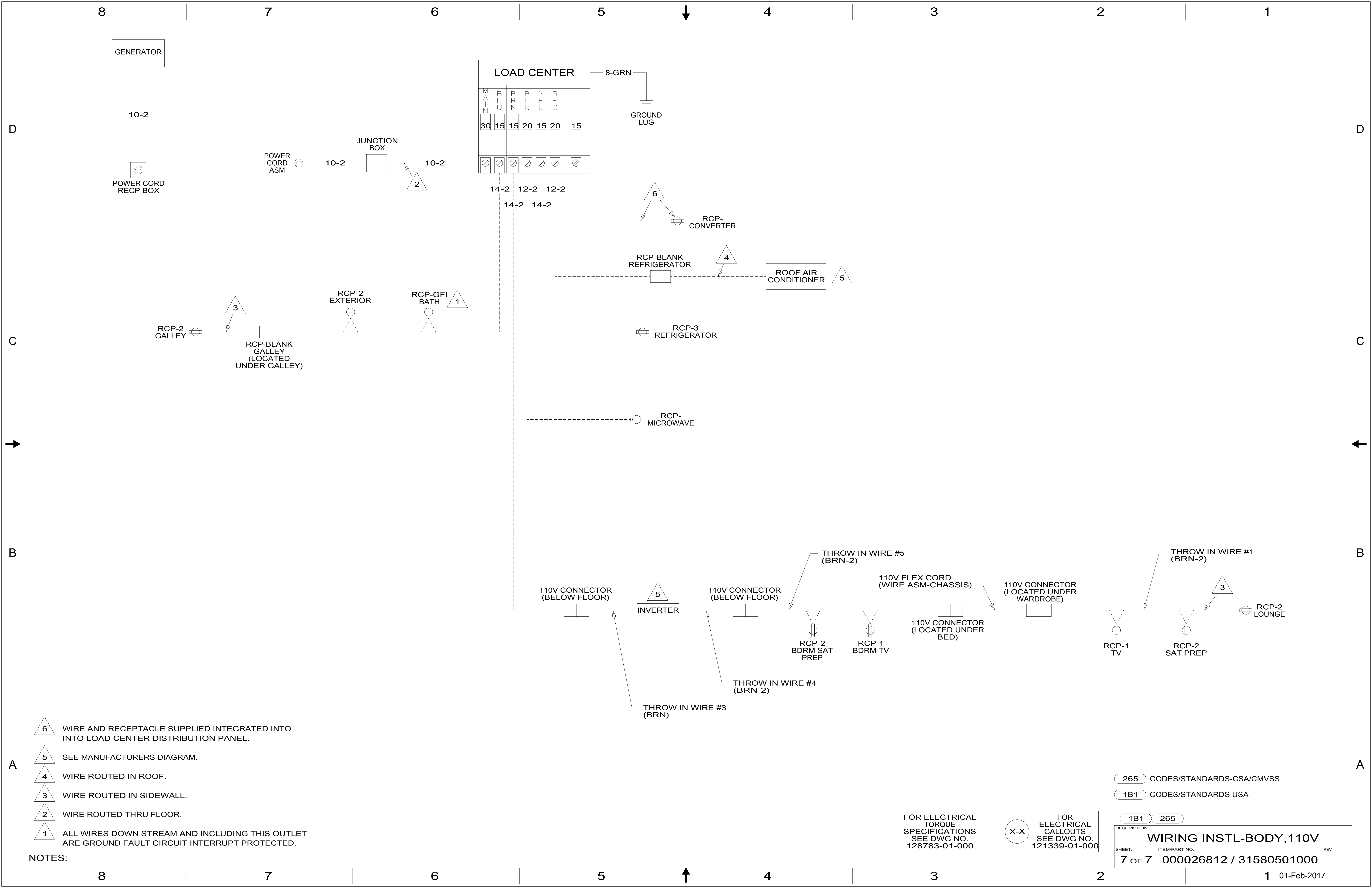
- NOTES:
- 3 SECURE CONDUIT TO POWER CORD WITH TAPE 8363-01-000 FOR TRANSPORTATION PURPOSES.
 - 2 WIRES CONNECTED TO 4X4 BOX ON ASSEMBLY LINE ONCE PARTS ARE INSTALLED.
 - 1 CONNECT BLK TO BLK, WHT TO WHT, AND GRNDS TO GRNDS.

FOR ELECTRICAL
TORQUE
SPECIFICATIONS
SEE DWG NO.
128783-01-000

FOR ELECTRICAL
CALLOUTS
SEE DWG NO.
121339-01-000

- 265 CODES/STANDARDS-CSA/CMVSS
- 1B1 CODES/STANDARDS USA

DESCRIPTION:	
WIRING INSTL-BODY, 110V	
SHEET:	ITEM/PART NO:
6 OF 7	000026812 / 31580501000
REV	



- NOTES:
- 6 WIRE AND RECEPTACLE SUPPLIED INTEGRATED INTO LOAD CENTER DISTRIBUTION PANEL.
 - 5 SEE MANUFACTURERS DIAGRAM.
 - 4 WIRE ROUTED IN ROOF.
 - 3 WIRE ROUTED IN SIDEWALL.
 - 2 WIRE ROUTED THRU FLOOR.
 - 1 ALL WIRES DOWN STREAM AND INCLUDING THIS OUTLET ARE GROUND FAULT CIRCUIT INTERRUPT PROTECTED.

FOR ELECTRICAL TORQUE SPECIFICATIONS SEE DWG NO. 128783-01-000

FOR ELECTRICAL CALLOUTS SEE DWG NO. 121339-01-000

265 CODES/STANDARDS-CSA/CMVSS
 1B1 CODES/STANDARDS USA

DESCRIPTION: WIRING INSTL-BODY, 110V	
SHEET: 7 OF 7	ITEM/PART NO.: 000026812 / 31580501000
REV	