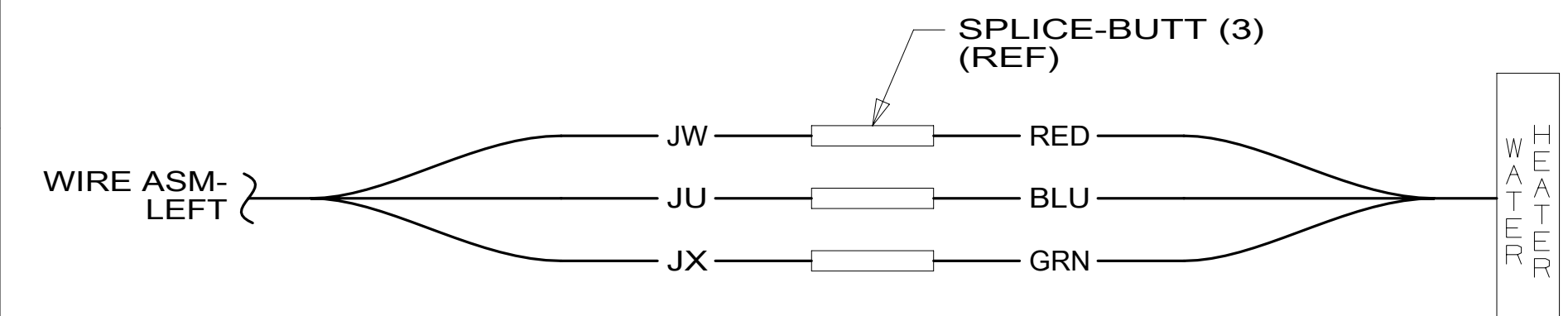
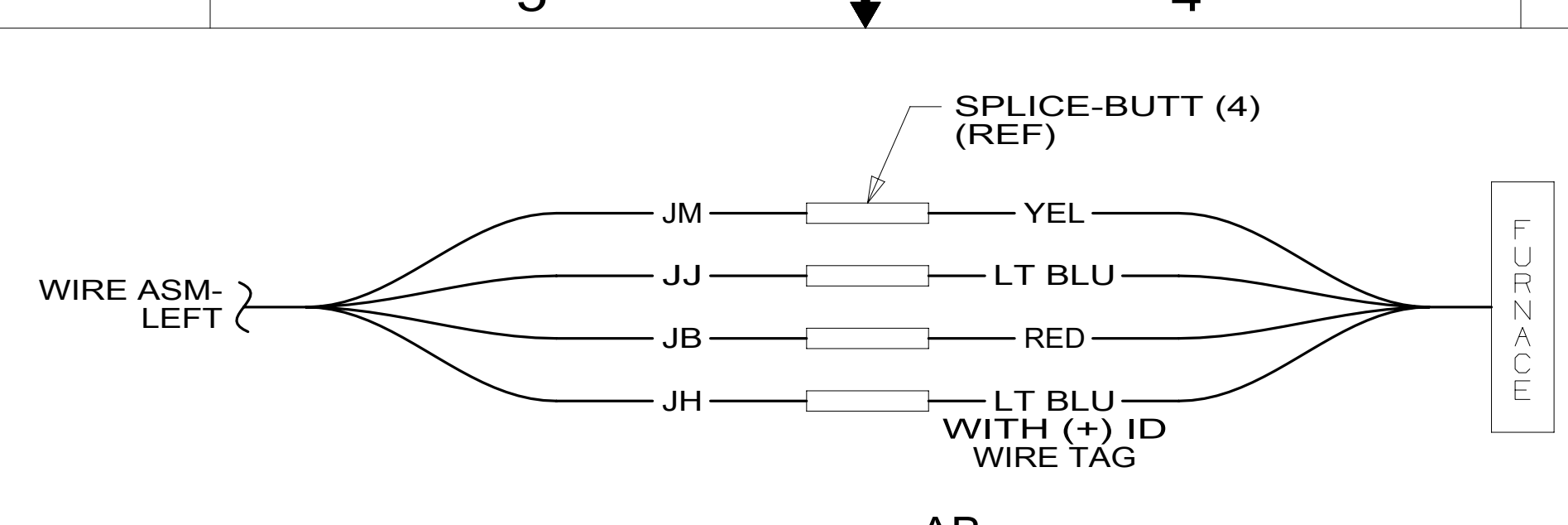


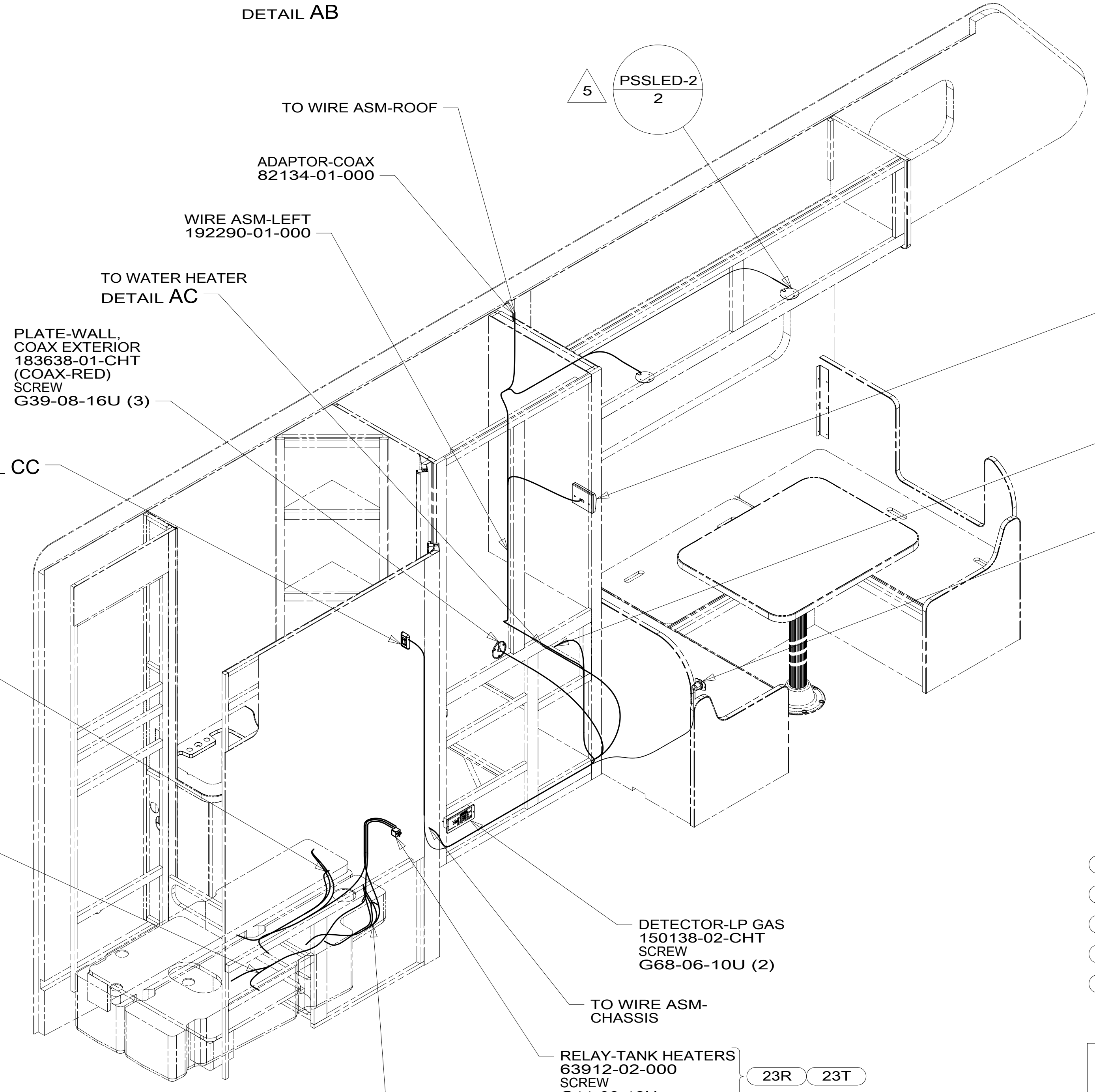
DETAIL AA



DETAIL AC



DETAIL AB



- NOTES:
- 7 MARK WIRES WITH WRAP OF BLU TAPE.
 - 6 MARK WIRES WITH WRAP OF ORG TAPE.
 - 5 SWITCH ON LAMP TO BE ORIENTED TO REAR OF CABINET.
 - 4. AT MINIMUM ALL WIRES TO BE SUPPORTED AND SECURED PER CODE REQUIREMENTS. USE CLAMP 10495 OR 10497 OR WIRE TIE 8343 OR 108046 AND SCREW G67-XX-XXX OR G56-XX-XXX AS APPROPRIATE FOR INSTALLATION.
 - 3 SEE DRAINAGE SYSTEM INSTALLATION FOR ADDITIONAL INFORMATION.
 - 2 WIRE ROUTED ALONG DRAINAGE PIPE AND CONNECTED TO PIPE WITH TIE-WIRE 8343-04-000.
 - 1 SEE DETAIL BB FOR WIRING AND CONNECTION TO SENSOR PROBES.

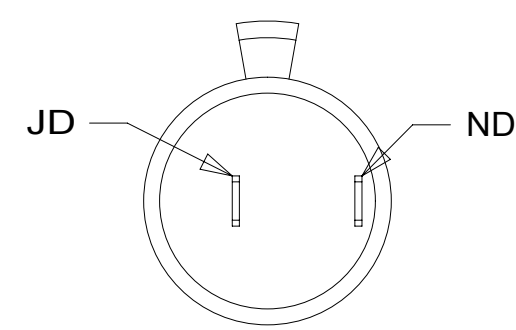
- 38E CONVENIENCE PACKAGE
- 23R DRAINAGE SYSTEM/HEAT-PREWIRE
- 23T DRAINAGE SYSTEM-HEATED
- 265 CODES/STANDARDS-CSA/CMVSS
- 1B1 CODES/STANDARDS USA

WINNEBAGO
COPYRIGHT 2016 WINNEBAGO INDUSTRIES, INC.

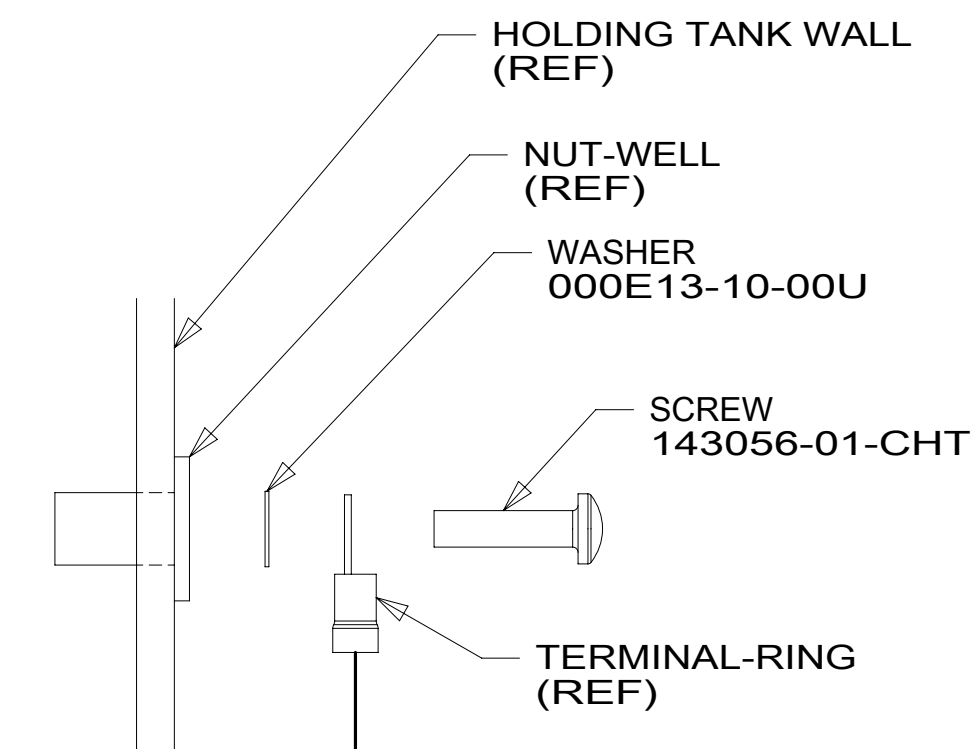
DSNR:	ALL DIMENSIONS ARE IN MILLIMETERS	
DFFR:	MATERIAL:	
UNSPECIFIED TOLERANCES:		
WHOLE DIM (X)	± 3	
ONE-PLACE (X.X)	± 1.5	
TWO-PLACE (X.XX)	± 0.50	
ANGLE	± 1°	
REFER TO ES0018 FOR FASTENER TIGHTENING GUIDELINES	WEIGHT: (LBS)	FIRST USED:
		17 322R
DESCRIPTION:		
WIRING INSTL-BODY, 12V		
SHEET: 1 OF 4	ITEM/PART NO: 000026410 / 31562801000	REV:
REF:		1 05-Apr-2017

FOR ELECTRICAL TORQUE SPECIFICATIONS SEE DWG NO. 128783-01-000

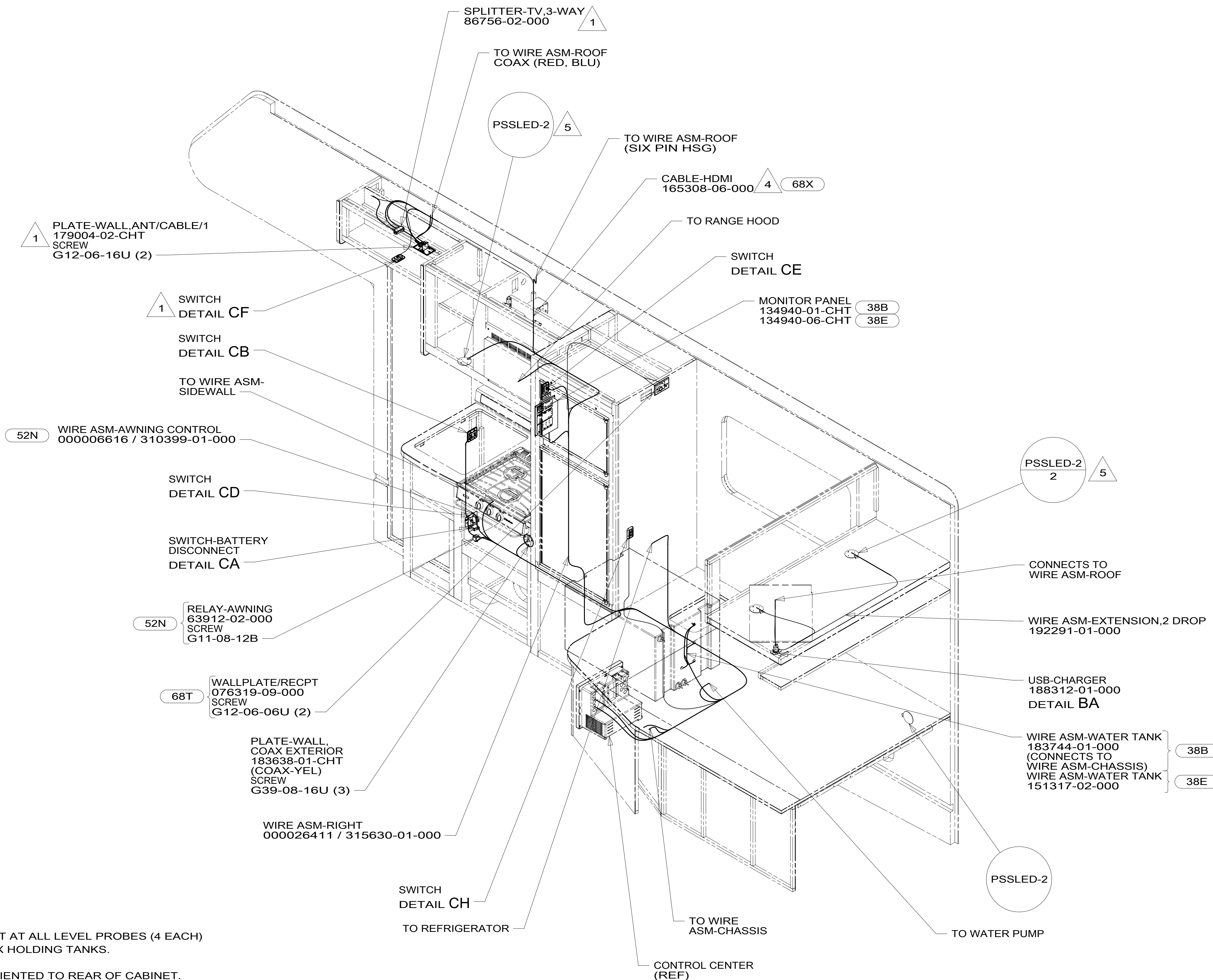
FOR ELECTRICAL CALLOUTS SEE DWG NO. 121339-01-000



DETAIL BA



DETAIL BB



- 6 TYPICAL WIRE ATTACHMENT AT ALL LEVEL PROBES (4 EACH) FOR WATER, MAIN, AND AUX HOLDING TANKS.
- 5 SWITCH ON LAMP TO BE ORIENTED TO REAR OF CABINET.
- 4 ROUTE HDMI CALBE WITH WIRE ASM-RIGHT.
- 3. AT MINIMUM ALL WIRES TO BE SUPPORTED AND SECURED PER CODE REQUIREMENTS. USE CLAMP 10495 OR 10497 OR WIRE TIE 8343 OR 108046 AND SCREW G67-XX-XXX OR G56-XX-XXX AS APPROPRIATE FOR INSTALLATION.
- 2 SEE DETAIL BB FOR WIRING AND CONNECTION TO SENSOR PROBES.
- 1 SEE WIRING INSTL-TV/DVD FOR ADDITIONAL INFORMATION.

NOTES:

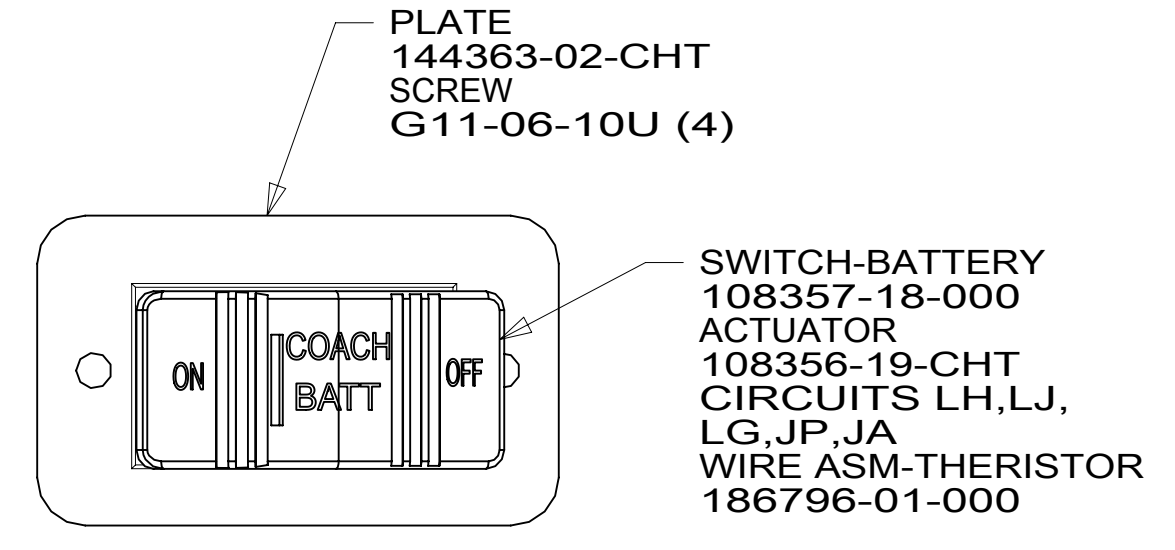
- 68X TV - BEDROOM
- 52N AWNING - PATIO, ELECTRIC
- 68T TV - BEDROOM WITHOUT
- 38B CONVENIENCE PACKAGE WITHOUT
- 38E CONVENIENCE PACKAGE
- 265 CODES/STANDARDS-CSA/CMVSS
- 1B1 CODES/STANDARDS USA

FOR ELECTRICAL TORQUE SPECIFICATIONS SEE DWG NO. 128783-01-000

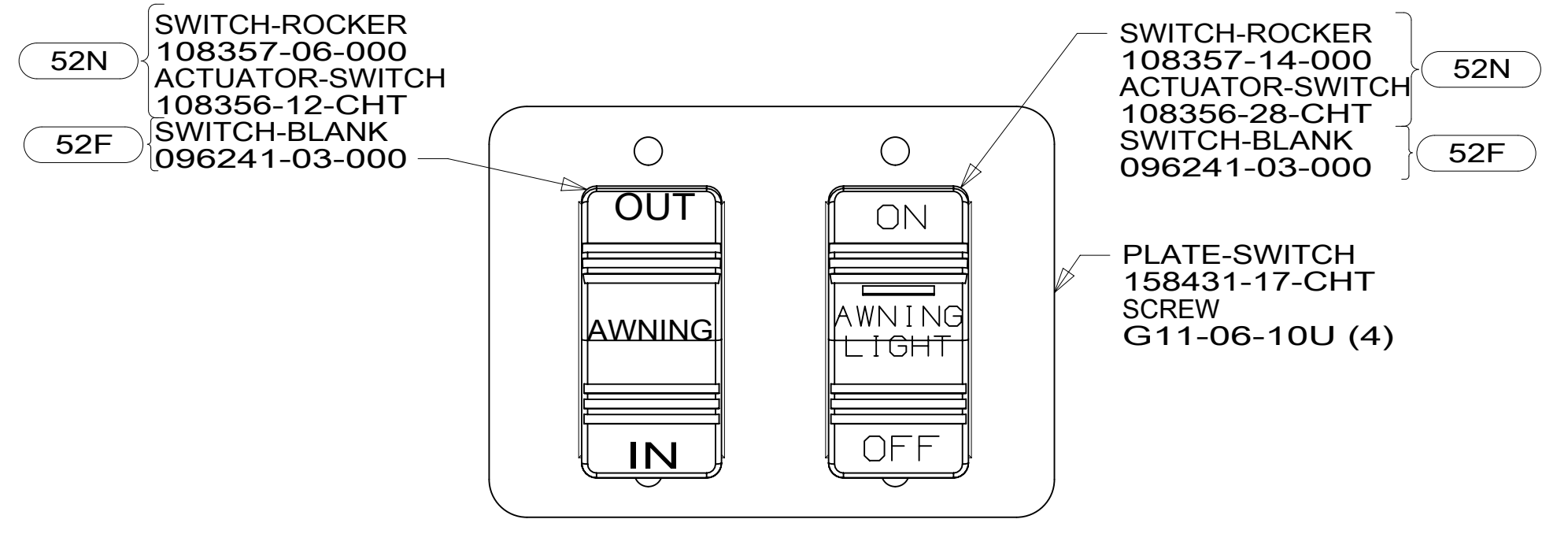
FOR ELECTRICAL CALLOUTS SEE DWG NO. 121339-01-000

DESCRIPTION:	1B1 265	
WIRING INSTL-BODY, 12V		
SHEET:	ITEM/PART NO.:	REV:
2 OF 4	000026410 / 31562801000	

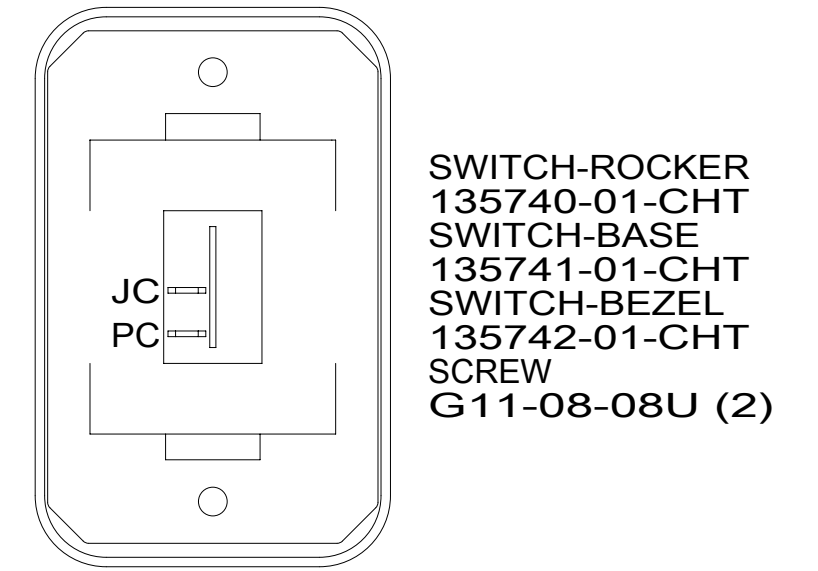
8 7 6 5 4 3 2 1



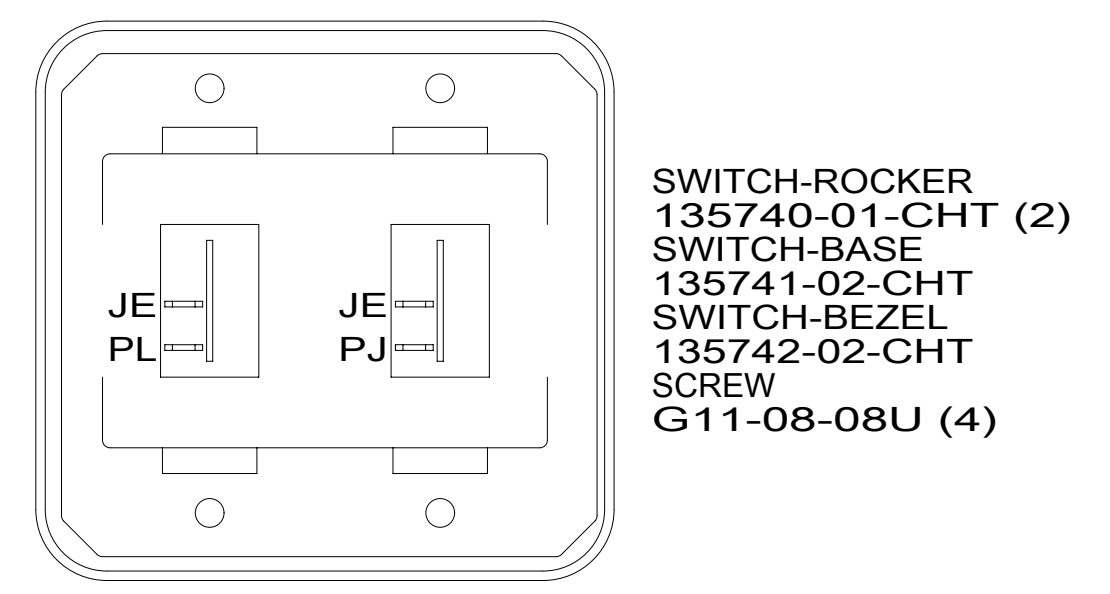
DETAIL CA



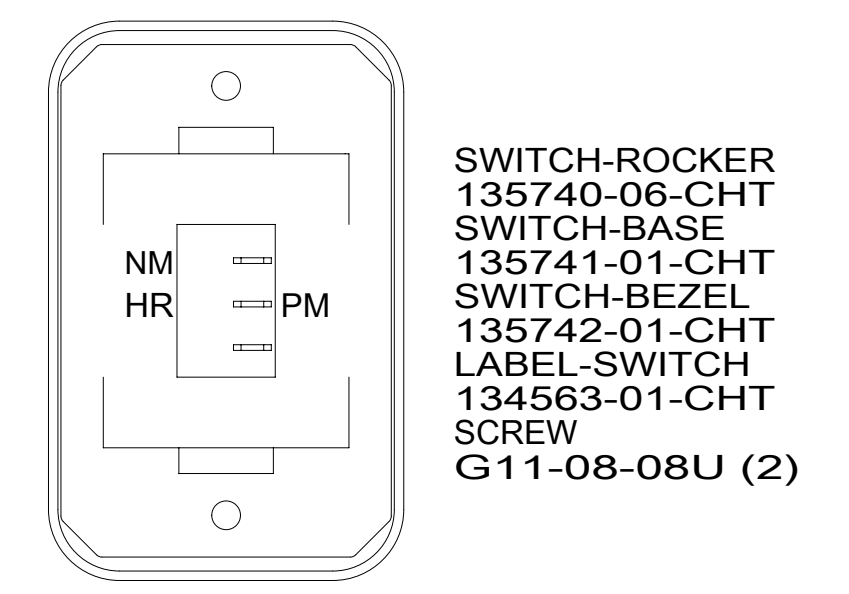
DETAIL CD



DETAIL CH

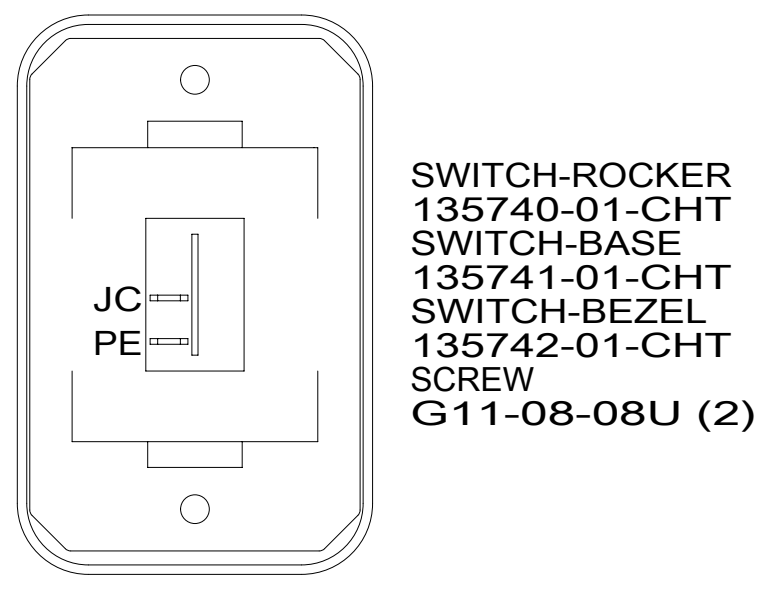


DETAIL CB

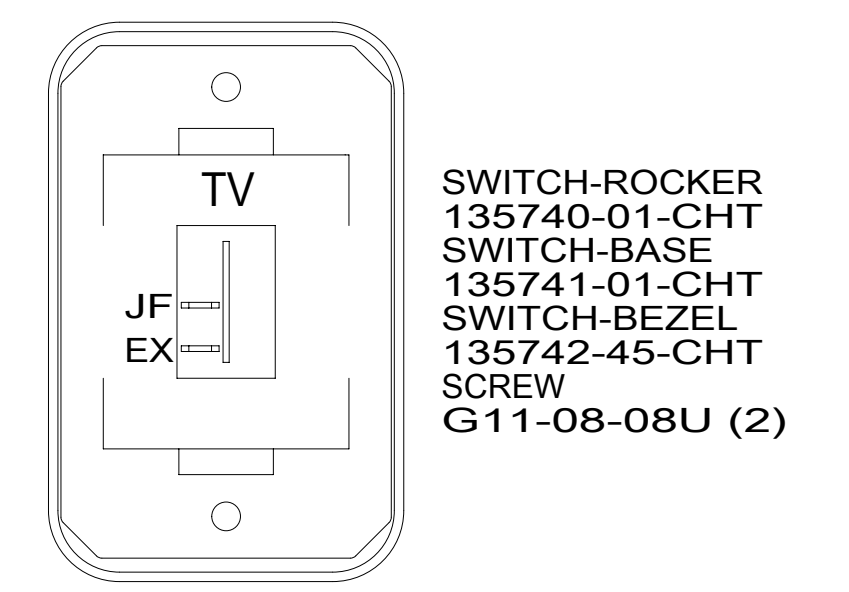


HOLDING TANK HEATER
TURN OFF When Not In Use
SEE OPERATORS MANUAL

DETAIL CE 23T 23R



DETAIL CC



DETAIL CF

- 52F AWNING - PATIO
- 52N AWNING - PATIO, ELECTRIC
- 23R DRAINAGE SYSTEM/HEAT-PREWIRE
- 23T DRAINAGE SYSTEM-HEATED
- 265 CODES/STANDARDS-CSA/CMVSS
- 1B1 CODES/STANDARDS USA

FOR ELECTRICAL TORQUE SPECIFICATIONS SEE DWG NO. 128783-01-000

FOR ELECTRICAL CALLOUTS SEE DWG NO. 121339-01-000

DESCRIPTION:		1B1 265
WIRING INSTL-BODY, 12V		
SHEET:	ITEM/PART NO.:	REV
3 OF 4	000026410 / 31562801000	

8 7 6 5 4 3 2 1 05-Apr-2017

8

7

6

5

↓

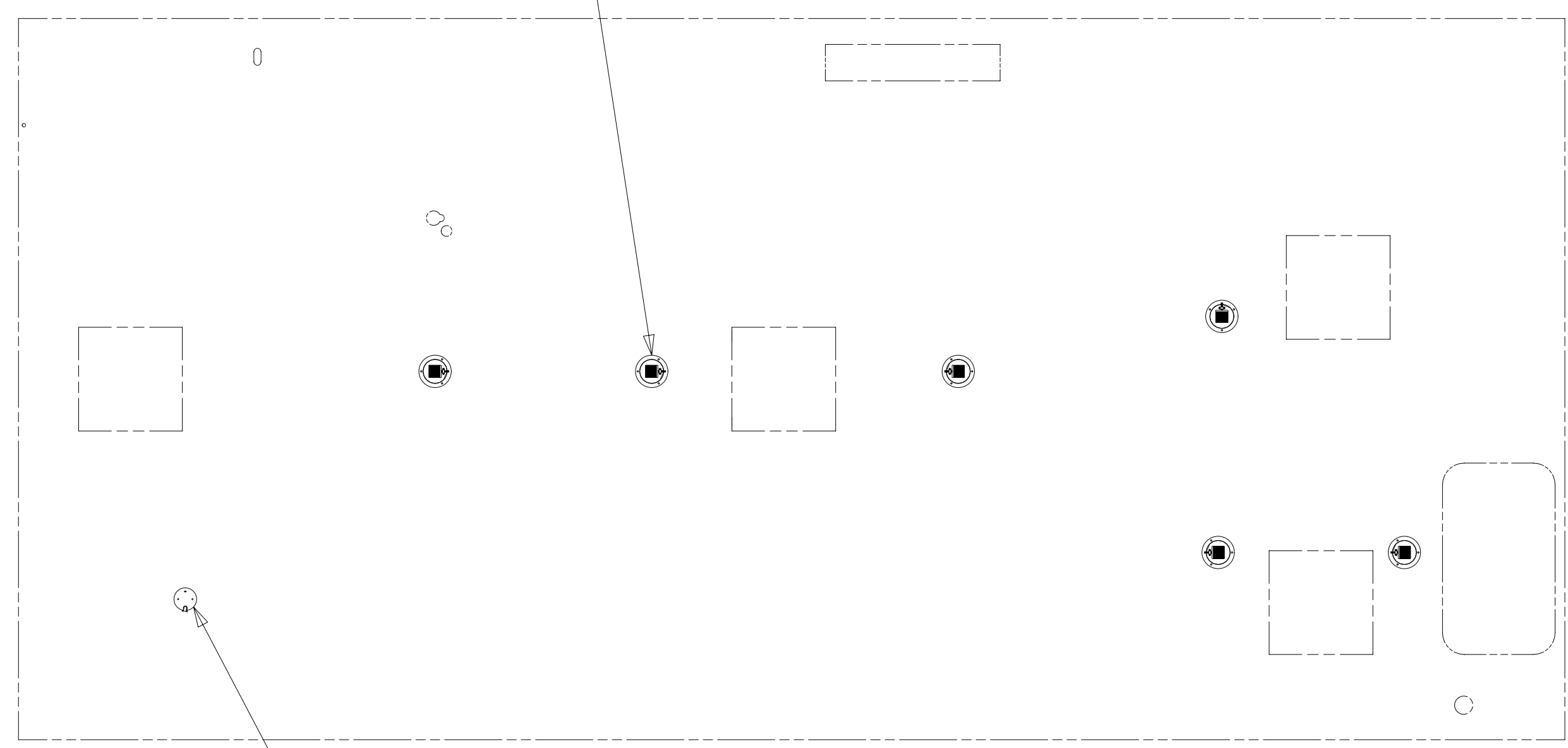
4

3

2

1

PRLED-4
6

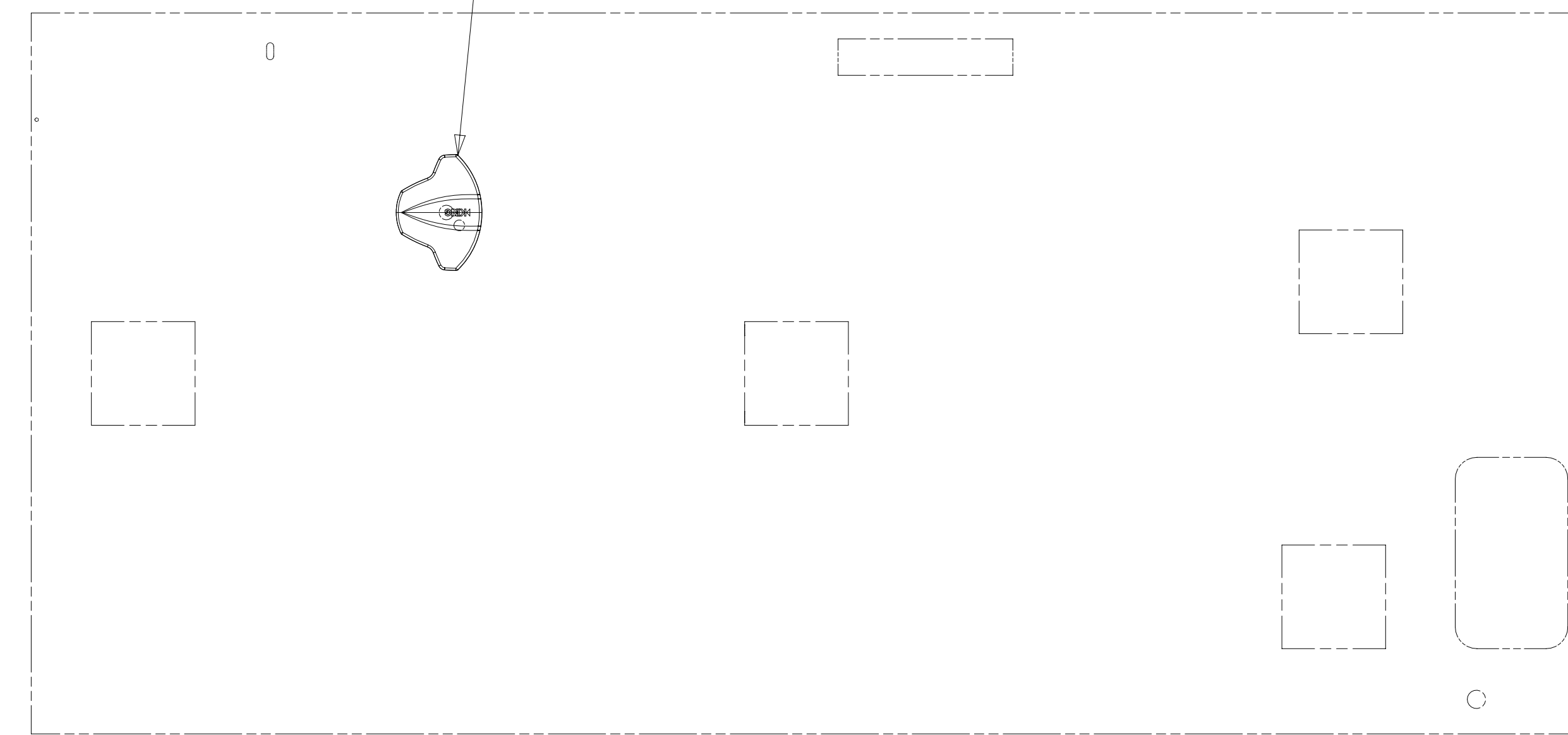


PSSLED-2

ANTENNA-TV ROOF
000039180 / 318992-01-CHT
SCREW
G67-10-12U (6)
ANTENNA-TV, OMNIDIRECTIONAL
000045333 / 320902-01-CHT
SCREW
G67-10-12U (6)

1 1J8

1 193



- 1J8 TV ANTENNA-OMNI DIRECTIONAL
- 193 TV ANTENNA-AMPLIFIED SYSTEM
- 265 CODES/STANDARDS-CSA/CMVSS
- 1B1 CODES/STANDARDS USA

1 SEE ANTENNA INSTALLATION MANUAL FOR
CORRECT INSTALLATION PROCEDURE.

NOTES:

FOR ELECTRICAL
TORQUE
SPECIFICATIONS
SEE DWG NO.
128783-01-000

FOR
ELECTRICAL
CALLOUTS
SEE DWG NO.
121339-01-000

1B1	265
DESCRIPTION: WIRING INSTL-BODY, 12V	
SHEET: 4 OF 4	ITEM/PART NO: 000026410 / 31562801000
REV	

8

7

6

5

↑

4

3

2

1

05-Apr-2017