

- 8. ALL CRIMP FITTINGS TO 3/4" PEX TUBING REQUIRE 3/4" CLAMP 140171-05-000.
- 7. ALL CRIMP FITTINGS TO 1/2" PEX TUBING REQUIRE 1/2" CLAMP 140171-03-000.
- 6. ALL CRIMP FITTINGS TO 5/8" FLEX TUBING REQUIRE 5/8" CLAMP 140171-04-000.
- 5 LABEL HOT AND COLD SUPPLY TUBES AND TAPE FITTING TO TUBE BEFORE CABINET SET TO PREVENT MOVEMENT.
- 4 ADD TEFLON TAPE 010405-01-000.
- 3. ALL TUBING TO BE SECURED AT 1200 INTERVALS MAXIMUM WITH CLAMP 010495-01-000 AND SCREW 000G67-10-12U OR EQUIVALENT.
- 2. TUBING TO BE INSTALLED WITH SUFFICIENT SLOPE TO PROVIDE DRAINAGE TO NEAREST VALVE.
- 1. PLASTIC FITTINGS TO BE SEALED WITH SEALANT 084456-01-000.

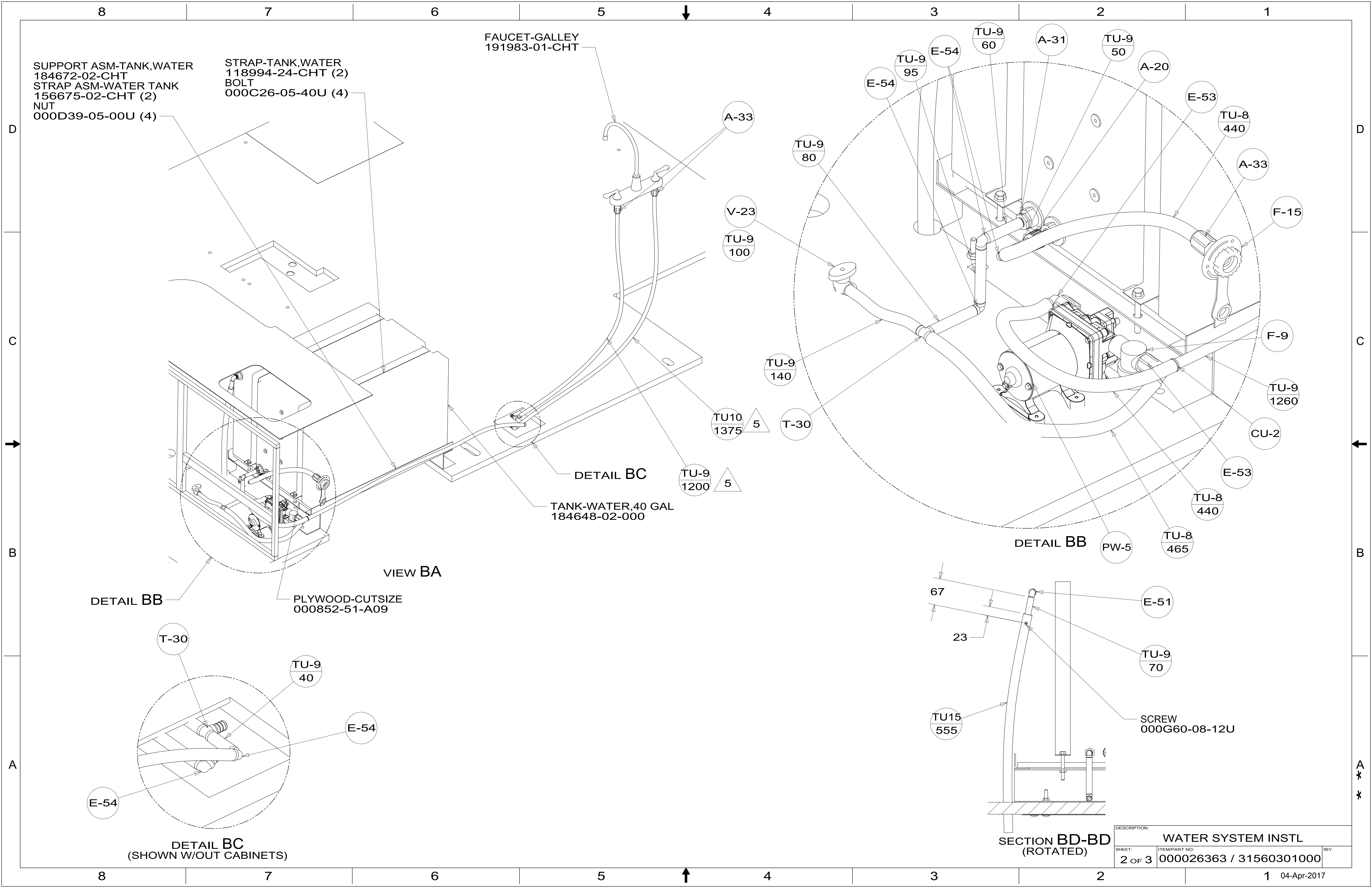
NOTES:

38E CONVENIENCE PACKAGE



UNSPECIFIED TOLERANCES:		MATERIAL:	
WHOLE DIM (X)	3		
ONE-PLACE (X.X)	1.5		
TWO-PLACE (X.XX)	0.50		
ANGLE	1°		
REFER TO ES0018 FOR FASTENER TIGHTENING GUIDELINES		WEIGHT: (LBS)	FIRST USED: (REF)
			17 322R
DESCRIPTION: WATER SYSTEM INSTL			
SHEET:	ITEM/PART NO:	REV	
1 OF 3	000026363 / 31560301000		

X-X
FOR WATER CALLOUTS SEE DWG NO. 000209446 / 303369-01-000



SUPPORT ASM-TANK, WATER
 184672-02-CHT
 STRAP ASM-WATER TANK
 156675-02-CHT (2)
 NUT
 000D39-05-00U (4)

STRAP-TANK, WATER
 118994-24-CHT (2)
 BOLT
 000C26-05-40U (4)

FAUCET-GALLEY
 191983-01-CHT

TANK-WATER, 40 GAL
 184648-02-000

VIEW BA

DETAIL BB

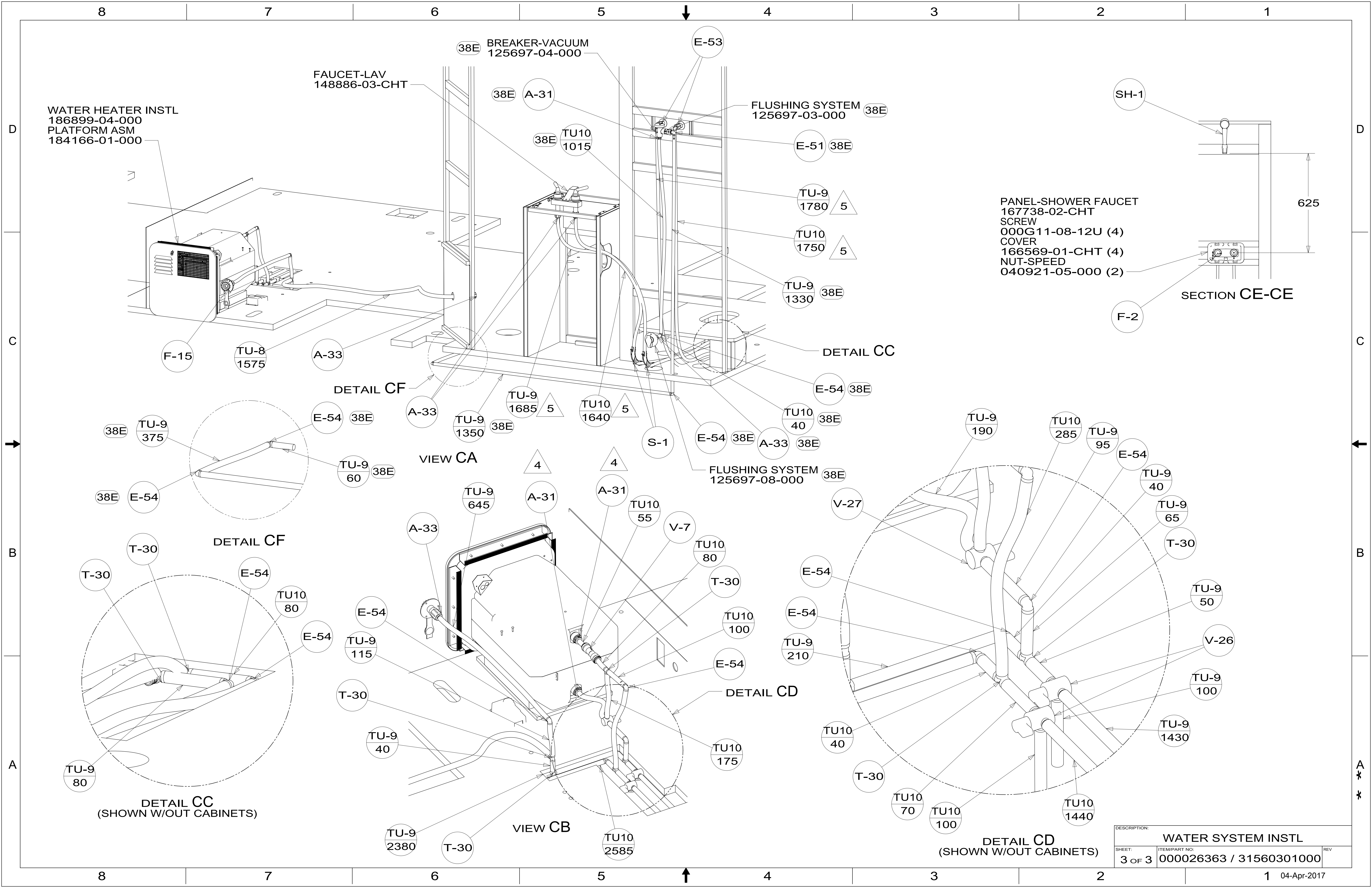
PLYWOOD-CUTSIZE
 000852-51-A09

DETAIL BC

DETAIL BB

SECTION BD-BD
 (ROTATED)

DESCRIPTION:		
WATER SYSTEM INSTL		
SHEET:	ITEM/PART NO.:	REV
2 OF 3	000026363 / 31560301000	



WATER HEATER INSTL
186899-04-000
PLATFORM ASM
184166-01-000

FAUCET-LAV
148886-03-CHT

38E BREAKER-VACUUM
125697-04-000

FLUSHING SYSTEM
125697-03-000 38E

PANEL-SHOWER FAUCET
167738-02-CHT
SCREW
000G11-08-12U (4)
COVER
166569-01-CHT (4)
NUT-SPEED
040921-05-000 (2)

SECTION CE-CE

625

F-15

TU-8
1575

A-33

38E TU10
1015

E-51 38E

TU-9
1780 5

TU10
1750 5

TU-9
1330 38E

DETAIL CC

DETAIL CF

TU-9
1685 5

TU10
1640 5

E-54 38E

TU10
40 38E

38E TU-9
375

E-54 38E

A-33

TU-9
1350 38E

S-1

E-54 38E

A-33 38E

FLUSHING SYSTEM
125697-08-000 38E

V-27

TU-9
190

TU10
285

TU-9
95

E-54

TU-9
40

TU-9
65

T-30

TU-9
50

V-26

TU-9
100

TU-9
1430

TU-9
100

TU-9
1430

TU-9
100

TU-9
1430

TU-9
100

TU-9
1430

VIEW CA

TU-9
645

A-31

A-31

TU10
55

V-7

TU10
80

T-30

TU10
100

E-54

E-54

TU-9
210

E-54

DETAIL CD

TU10
175

TU10
175

TU10
175

TU10
175

TU10
175

TU10
175

DETAIL CF

TU10
80

E-54

E-54

TU-9
115

T-30

TU-9
40

TU-9
40

TU-9
40

TU-9
40

TU-9
40

TU-9
40

T-30

T-30

TU-9
80

TU-9
80

TU-9
80

TU-9
80

TU-9
80

TU-9
80

TU-9
80

TU-9
80

TU-9
80

TU-9
80

DETAIL CC
(SHOWN W/OUT CABINETS)

VIEW CB

TU-9
2380

T-30

TU10
2585

DETAIL CD
(SHOWN W/OUT CABINETS)

DESCRIPTION:		
WATER SYSTEM INSTL		
SHEET:	ITEM/PART NO.:	REV
3 OF 3	000026363 / 31560301000	