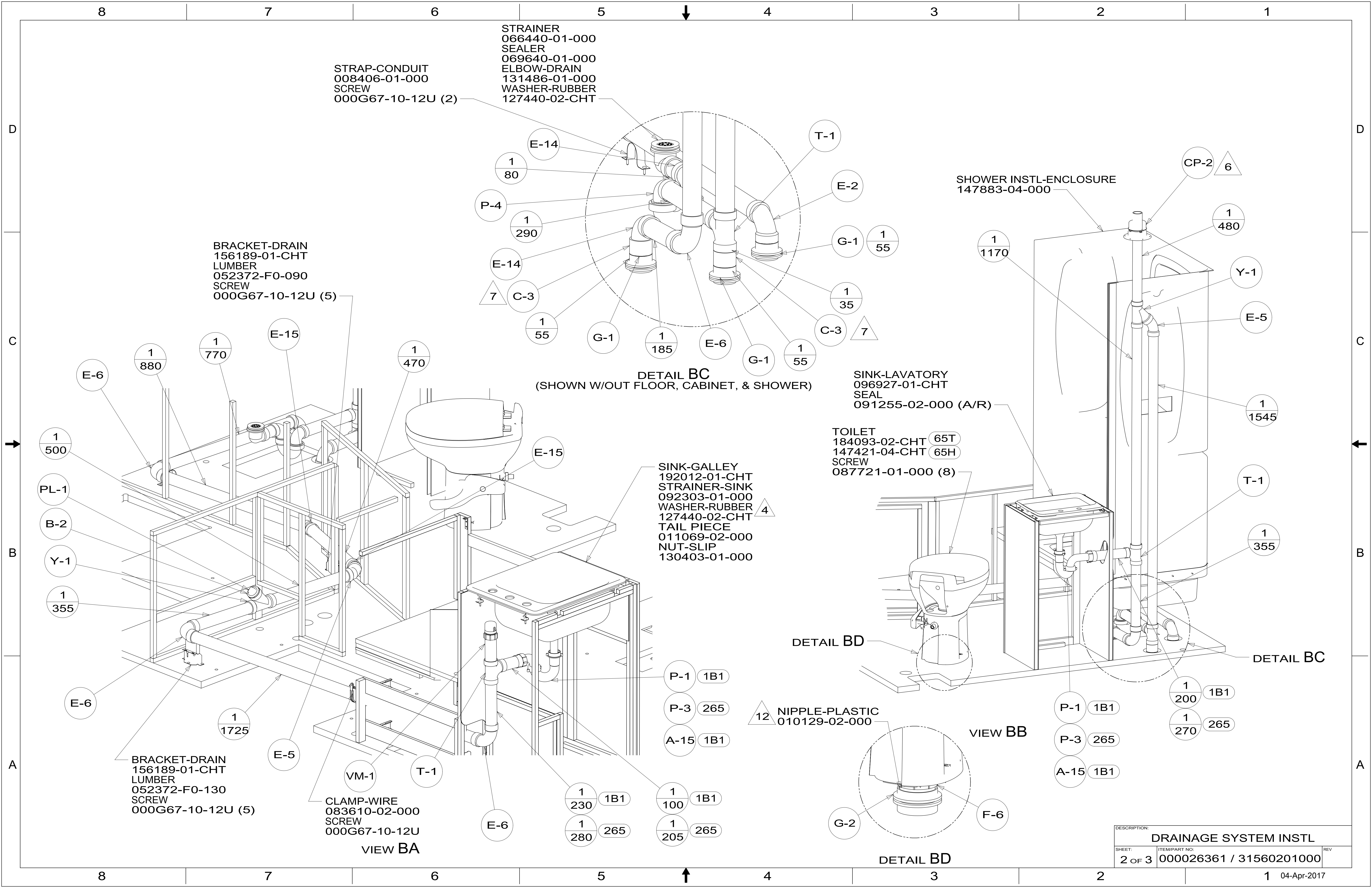


- NOTES:
1. SLOPE OF HORIZONTAL PIPING TO BE MINIMUM OF 3 PER 305 mm.
  2. SLOPE OF TRAP ARM MUST BE 6 PER 305 mm.
  3. ALL PIPE AND FITTINGS TO BE ASSEMBLED WITH SOLVENT 004020-01-000 (USA), 004020-02-000 (CAN)
  4. USE SMOOTH PLUMBERS PUTTY 167459-01-000 TO SEAL STRAINER (0.2 PER STRAINER).
  5. SEAL AROUND SHOWER WITH SILICONE.
  6. VENT PIPE MUST PROJECT 51 MIN AND 64 MAX ABOVE ROOF FOR PROPER FIT AND FUNCTION. ADD S-1 (116666-01-CHT SEAL-VENT PIPE) AROUND PIPE ON ROOF BEFORE VENT CAP IS INSTALLED.
  7. SECURE VENT PIPE TO FLOOR WITH CLAMP 062401-02-000 (2), SCREW 000G67-10-12U (2), BRACKET 136878-01-CHT (2).
  8. SECURE DRAINAGE PIPES TO CABINET USING WIRE TIE 108046-02-000, AND SCREW 000G67-10-12U AT INTERVALS OF NOT MORE THAN 4 FEET APART.
  9. SEE DRAWING 061607 FOR INSTALLATION OF GROMMETS.
  10. SEE WIRING INSTL-BODY FOR ELECTRICAL CONNECTION.
  11. PREP THE SURFACE PER MANUFACTURERS INSTRUCTIONS BEFORE APPLYING THE HEATING PAD.
  12. CUT PART TO 90MM.

- 65T RENTAL-BEST TIME RV-WITH-OUT
- 65H RENTAL-BEST TIME RV
- 38E CONVENIENCE PACKAGE
- 265 CODES/STANDARDS-CSA/CMVSS
- 23T DRAINAGE SYSTEM-HEATED
- 1B1 CODES/STANDARDS USA

X-X  
FOR  
DRAINAGE  
CALLOUTS  
SEE DWG NO.  
000211962 /  
303370-01-000

<b>WINNEBAGO</b> <sup>®</sup>		COPYRIGHT 2017 WINNEBAGO INDUSTRIES, INC.	
DSNR:		ALL DIMENSIONS ARE IN MILLIMETERS	
DIFTR:			
UNSPECIFIED TOLERANCES:		MATERIAL:	
WHOLE DIM (X)	3		
ONE-PLACE (X.X)	1.5		
TWO-PLACE (X.XX)	0.50		
ANGLE	1°		
REFER TO ES0018 FOR FASTENER TIGHTENING GUIDELINES	WEIGHT: (LBS)	FIRST USED: (REF)	
		17 322R	
<b>DESCRIPTION:</b>			
<b>DRAINAGE SYSTEM INSTL</b>			
SHEET:	ITEM/PART NO.:	REV:	
1 OF 3	000026361 / 31560201000		



STRAP-CONDUIT  
008406-01-000  
SCREW  
000G67-10-12U (2)

STRAINER  
066440-01-000  
SEALER  
069640-01-000  
ELBOW-DRAIN  
131486-01-000  
WASHER-RUBBER  
127440-02-CHT

BRACKET-DRAIN  
156189-01-CHT  
LUMBER  
052372-F0-090  
SCREW  
000G67-10-12U (5)

SHOWER INSTL-ENCLOSURE  
147883-04-000

SINK-LAVATORY  
096927-01-CHT  
SEAL  
091255-02-000 (A/R)

TOILET  
184093-02-CHT (65T)  
147421-04-CHT (65H)  
SCREW  
087721-01-000 (8)

SINK-GALLEY  
192012-01-CHT  
STRAINER-SINK  
092303-01-000  
WASHER-RUBBER  
127440-02-CHT  
TAIL PIECE  
011069-02-000  
NUT-SLIP  
130403-01-000

BRACKET-DRAIN  
156189-01-CHT  
LUMBER  
052372-F0-130  
SCREW  
000G67-10-12U (5)

CLAMP-WIRE  
083610-02-000  
SCREW  
000G67-10-12U

VIEW BA

DETAIL BC  
(SHOWN W/OUT FLOOR, CABINET, & SHOWER)

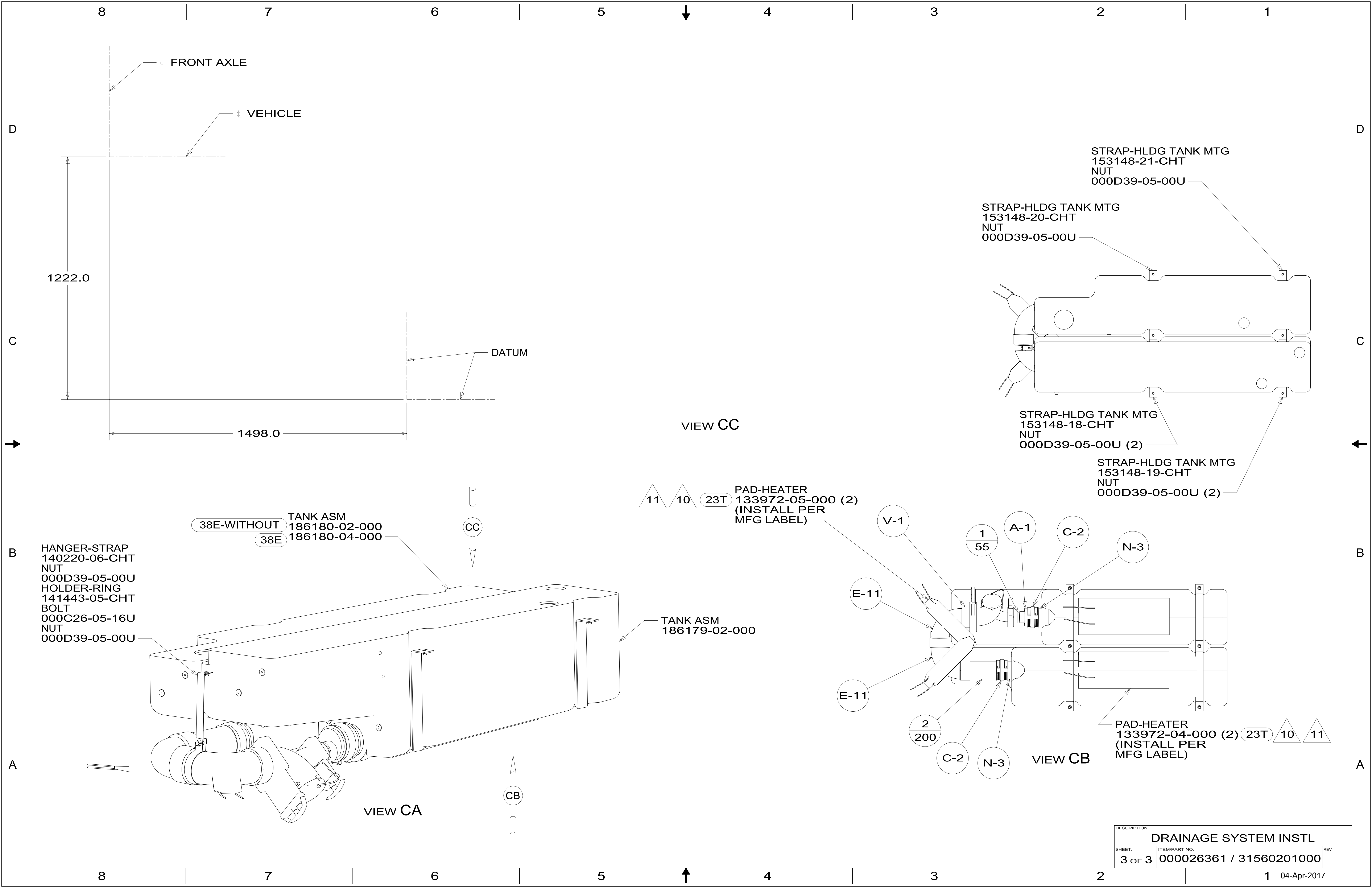
DETAIL BD

12 NIPPLE-PLASTIC  
010129-02-000

VIEW BB

DETAIL BD

DESCRIPTION: <b>DRAINAGE SYSTEM INSTL</b>		
SHEET: 2 OF 3	ITEM/PART NO: 000026361 / 31560201000	REV



FRONT AXLE  
VEHICLE

1222.0  
1498.0

DATUM

VIEW CC

STRAP-HLDG TANK MTG  
153148-21-CHT  
NUT  
000D39-05-00U

STRAP-HLDG TANK MTG  
153148-20-CHT  
NUT  
000D39-05-00U

STRAP-HLDG TANK MTG  
153148-18-CHT  
NUT  
000D39-05-00U (2)

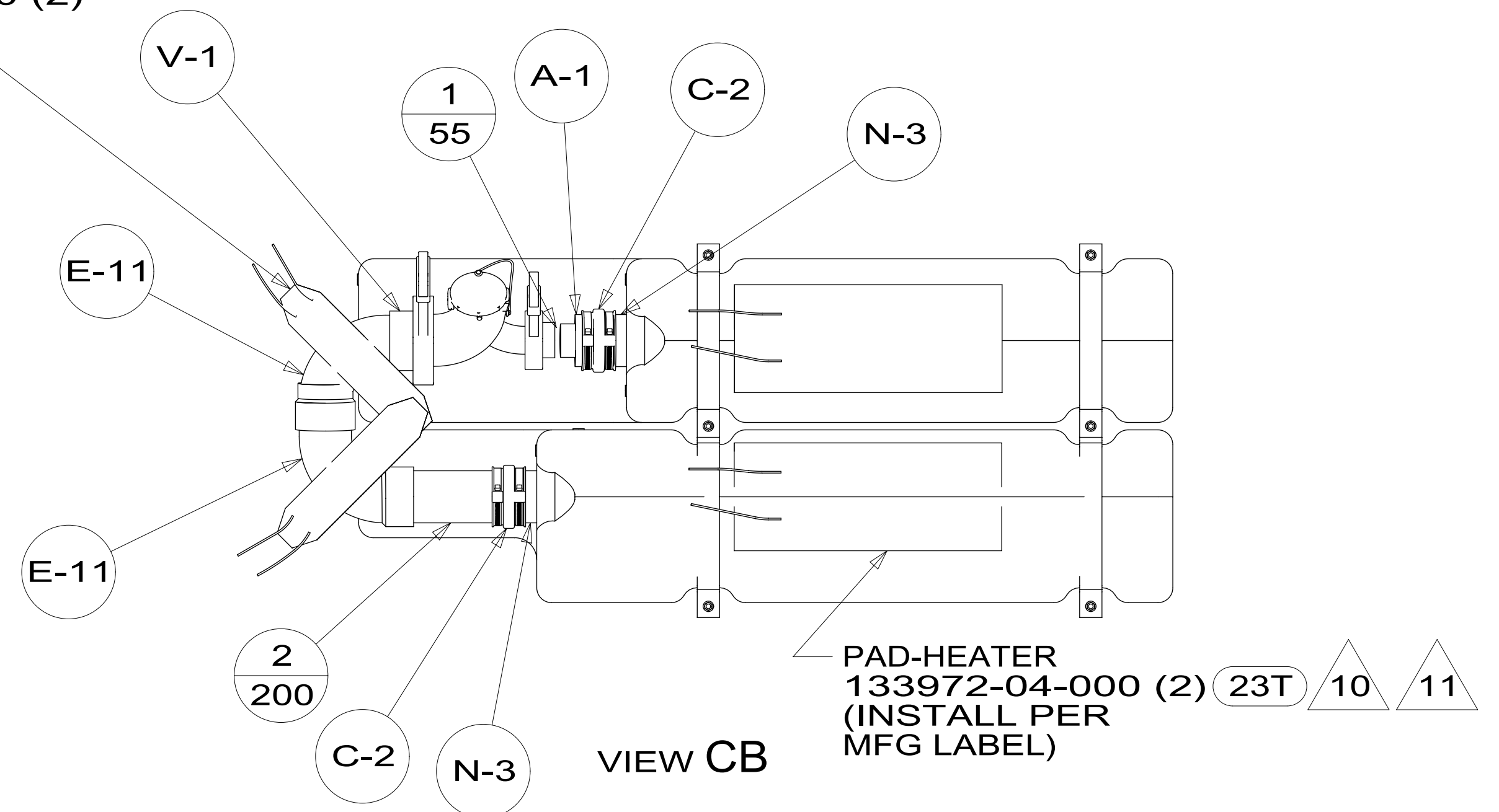
STRAP-HLDG TANK MTG  
153148-19-CHT  
NUT  
000D39-05-00U (2)

HANGER-STRAP  
140220-06-CHT  
NUT  
000D39-05-00U  
HOLDER-RING  
141443-05-CHT  
BOLT  
000C26-05-16U  
NUT  
000D39-05-00U

38E-WITHOUT TANK ASM  
186180-02-000  
38E 186180-04-000

TANK ASM  
186179-02-000

11 10 23T PAD-HEATER  
133972-05-000 (2)  
(INSTALL PER  
MFG LABEL)



VIEW CB

VIEW CA

DESCRIPTION: <b>DRAINAGE SYSTEM INSTL</b>		
SHEET: 3 OF 3	ITEM/PART NO: 000026361 / 31560201000	REV
		1 04-Apr-2017