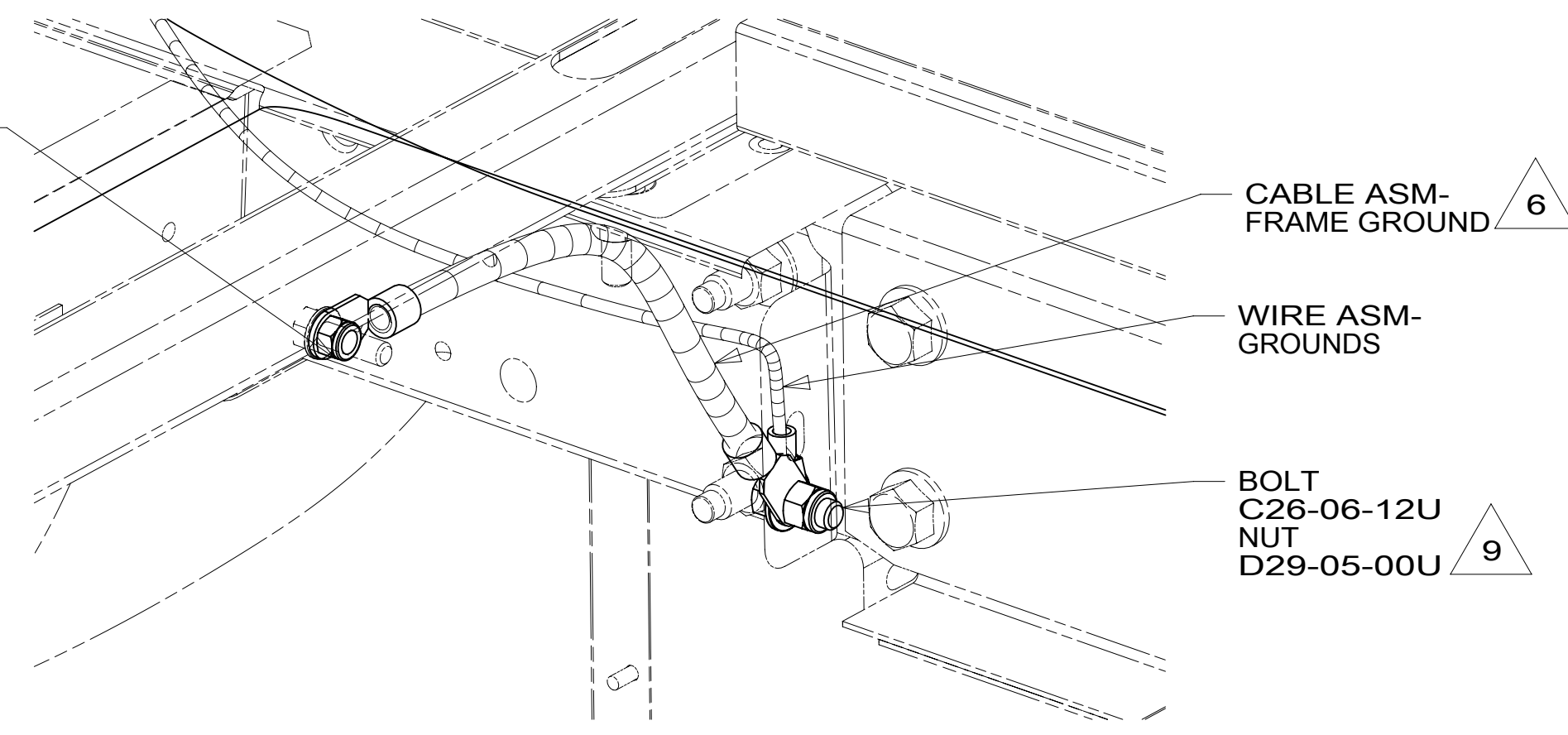


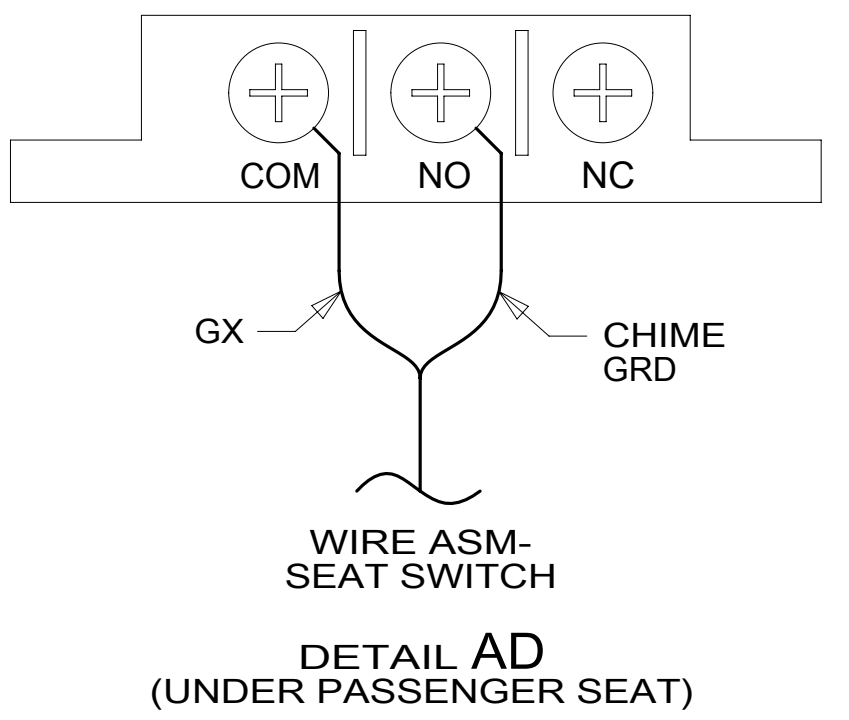
SOCKET 29 - CIRCUIT FR
 SOCKET 30 - CIRCUIT DY
 SOCKET 32 - CIRCUIT BW
 SOCKET 43 - CIRCUIT GZ

FORD HIGH SPECIFICATION VEHICLE INTERFACE CONNECTOR

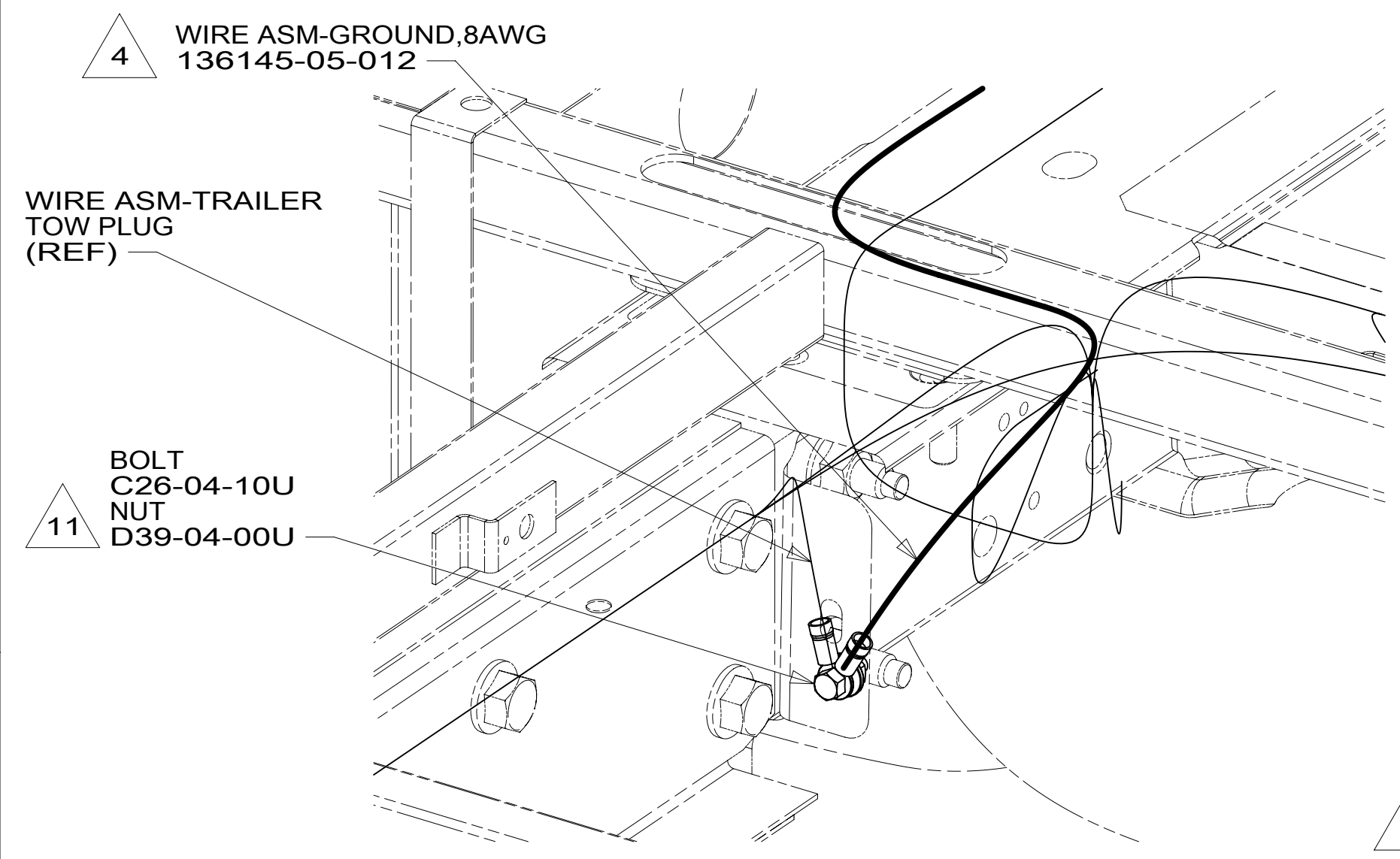
DETAIL AA



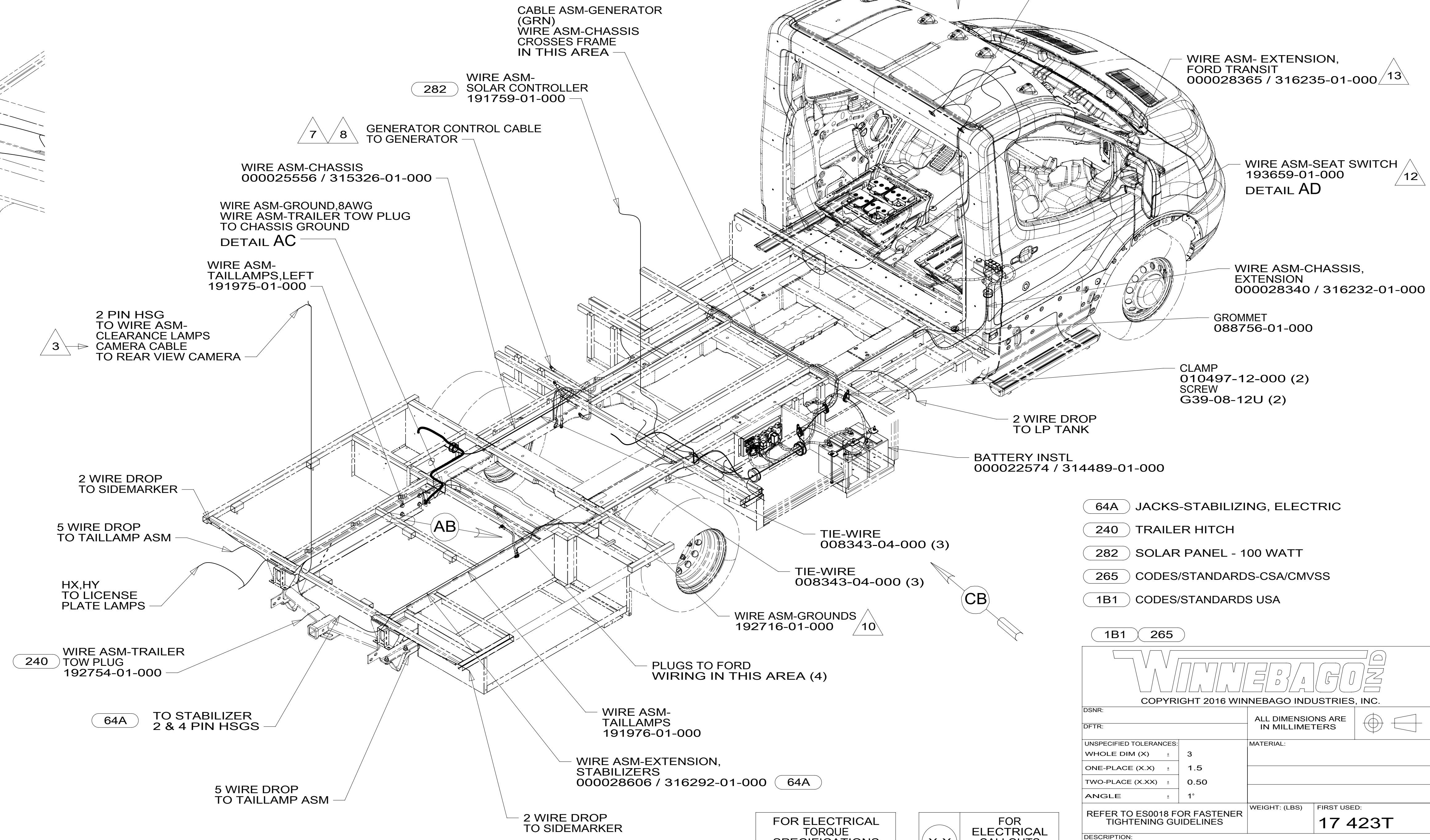
VIEW AB



CA



DETAIL AC



- 13 SEE DETAIL AA FOR CONNECTION OF WIRE ASM TO FORD SUPPLIED CONNECTOR LOCATED BEHIND GLOVE BOX.
- 12 SEE INTERIOR INSTL-FRONT FOR ADDITIONAL INFORMATION.
- 11 DRILL 6.35 MM HOLE IN CHASSIS RAIL FLANGE. CLEAN PANT FROM FLANGE APPROXIMATLY 10 MM AROUND HOLE. BOLT AND NUT GROUND RING FROM WIRE ASM-TRAILER TOW PLUG TO FLANGE.
- 10 SEE DETAIL AB FOR CONNECTION OF CABLE ASM TO CHASSIS RAIL.
- 9 DRILL 10.4 MM HOLE IN CHASSIS RAIL FLANGE. CLEAN PANT FROM FLANGE APPROXIMATLY 10 MM AROUND HOLE. BOLT AND NUT GROUND TERMINAL TO FLANGE.
- 8 ROUTE GENERATOR CABLE ALONG WITH WIRE ASM-CHASSIS TO AND THROUGH FLOOR TO WIRE ASM-RIGHT. ROUTE UP TO MONITOR PANEL AREA.
- 7 10 PIN HSG CONNECTS TO GENERATOR.
- 6 SEE BATTERY INSTL FOR ADDITIONAL INFORMATION.
- 5 WIRING IS PART OF WIRE ASM-POWER MIRRORS.
- 4 SEE LOAD CENTER/ATS ASM FOR ADDITIONAL INFORMATION.
- 3 SEE RADIO/MONITOR INSTL FOR ADDITIONAL INFORMATION.
- 2 USE WIRE TIES 8343-04-000 AND 116673-02-000 APPROXIMATELY 600MM ON CENTER UNLESS OTHERWISE SPECIFIED.
- 1 SECURE CONDUIT 41953, TAB AS REQUIRED, OVER ALL WIRES IN CONTACT WITH SHARP EDGES.

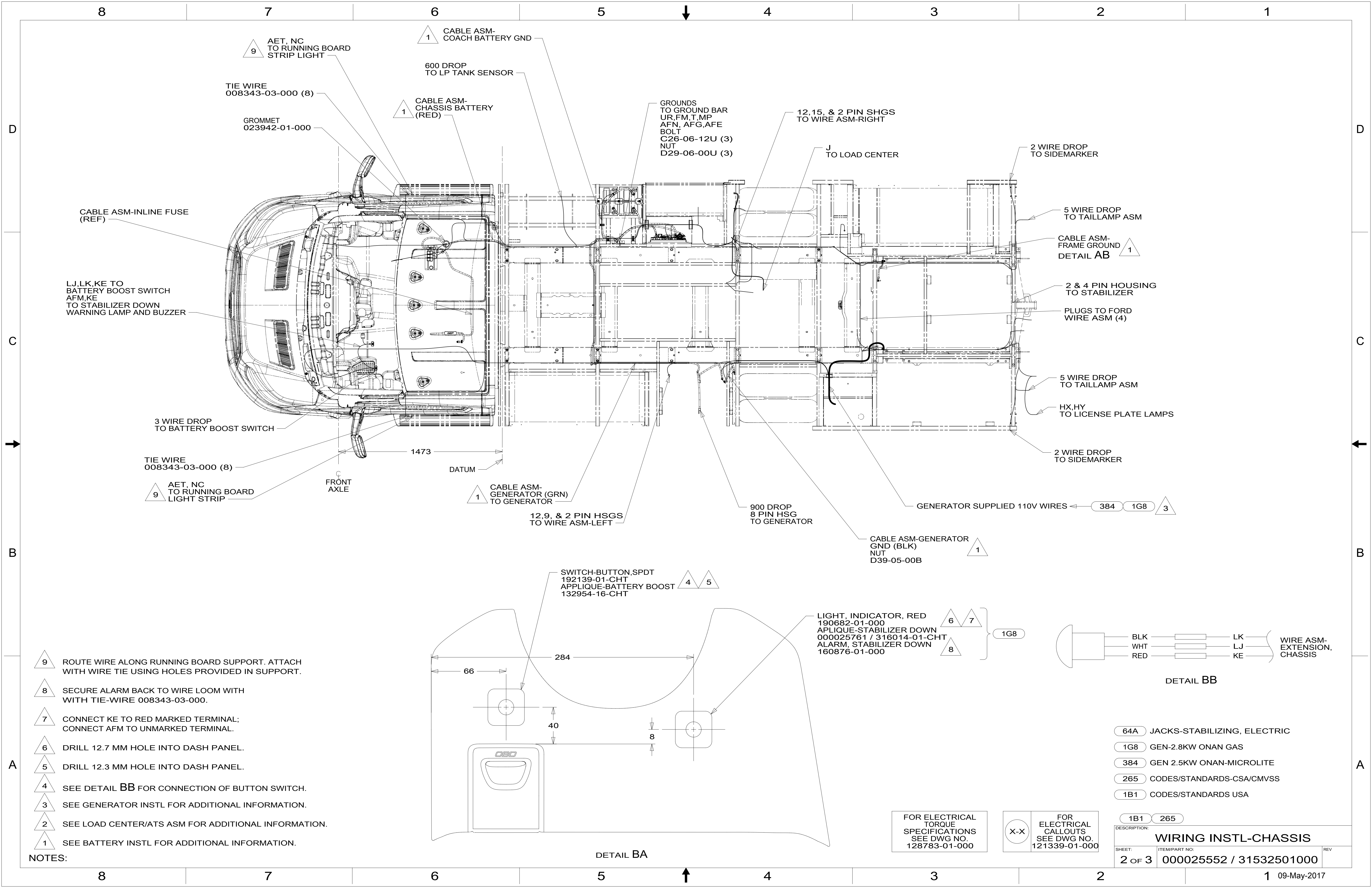
NOTES:

FOR ELECTRICAL TORQUE SPECIFICATIONS SEE DWG NO. 128783-01-000

FOR ELECTRICAL CALLOUTS SEE DWG NO. 121339-01-000

- 64A JACKS-STABILIZING, ELECTRIC
- 240 TRAILER HITCH
- 282 SOLAR PANEL - 100 WATT
- 265 CODES/STANDARDS-CSA/CMVSS
- 1B1 CODES/STANDARDS USA

WINNEBAGO COPYRIGHT 2016 WINNEBAGO INDUSTRIES, INC.	
DSNR:	ALL DIMENSIONS ARE IN MILLIMETERS
DIFFR:	
UNSPECIFIED TOLERANCES:	MATERIAL:
WHOLE DIM (X) : 3	
ONE-PLACE (X.X) : 1.5	
TWO-PLACE (X.XX) : 0.50	
ANGLE : 1°	
REFER TO ES0018 FOR FASTENER TIGHTENING GUIDELINES	WEIGHT: (LBS) FIRST USED: 17 423T
DESCRIPTION: WIRING INSTL-CHASSIS	
SHEET: 1 OF 3	ITEM/PART NO: 000025552 / 31532501000
REF:	REV: 1 09-May-2017



9 AET, NC TO RUNNING BOARD STRIP LIGHT

1 CABLE ASM-COACH BATTERY GND

600 DROP TO LP TANK SENSOR

1 CABLE ASM-CHASSIS BATTERY (RED)

GROUNDS TO GROUND BAR UR, FM, T, MP AFN, AFG, AFE BOLT C26-06-12U (3) NUT D29-06-00U (3)

12, 15, & 2 PIN SHGS TO WIRE ASM-RIGHT

2 WIRE DROP TO SIDEMARKER

5 WIRE DROP TO TAILLAMP ASM

1 CABLE ASM-FRAME GROUND DETAIL AB

2 & 4 PIN HOUSING TO STABILIZER

PLUGS TO FORD WIRE ASM (4)

5 WIRE DROP TO TAILLAMP ASM

HX, HY TO LICENSE PLATE LAMPS

2 WIRE DROP TO SIDEMARKER

CABLE ASM-INLINE FUSE (REF)

LJ, LK, KE TO BATTERY BOOST SWITCH AFM, KE TO STABILIZER DOWN WARNING LAMP AND BUZZER

3 WIRE DROP TO BATTERY BOOST SWITCH

8 TIE WIRE 008343-03-000 (8)

9 AET, NC TO RUNNING BOARD LIGHT STRIP

FRONT AXLE

1473

DATUM

1 CABLE ASM-GENERATOR (GRN) TO GENERATOR

12, 9, & 2 PIN HSGS TO WIRE ASM-LEFT

900 DROP 8 PIN HSG TO GENERATOR

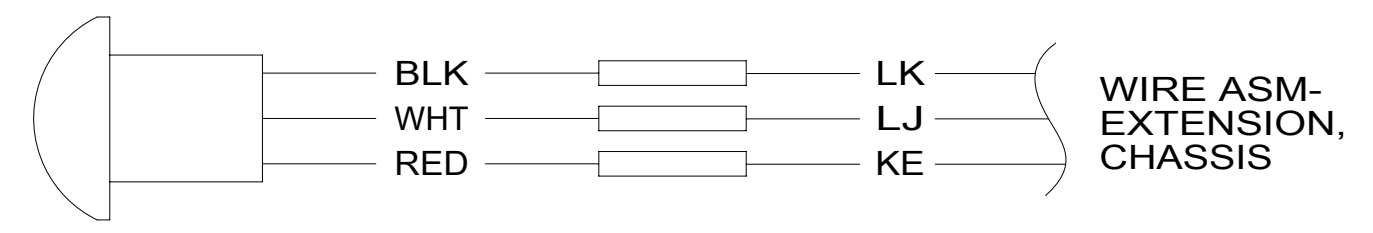
GENERATOR SUPPLIED 110V WIRES

384 1G8 3

1 CABLE ASM-GENERATOR GND (BLK) NUT D39-05-00B

4 5 SWITCH-BUTTON, SPDT 192139-01-CHT APPLIQUE-BATTERY BOOST 132954-16-CHT

6 7 LIGHT, INDICATOR, RED 190682-01-000 APPLIQUE-STABILIZER DOWN 000025761 / 316014-01-CHT 8 ALARM, STABILIZER DOWN 160876-01-000



DETAIL BB

9 ROUTE WIRE ALONG RUNNING BOARD SUPPORT. ATTACH WITH WIRE TIE USING HOLES PROVIDED IN SUPPORT.

8 SECURE ALARM BACK TO WIRE LOOM WITH TIE-WIRE 008343-03-000.

7 CONNECT KE TO RED MARKED TERMINAL; CONNECT AFM TO UNMARKED TERMINAL.

6 DRILL 12.7 MM HOLE INTO DASH PANEL.

5 DRILL 12.3 MM HOLE INTO DASH PANEL.

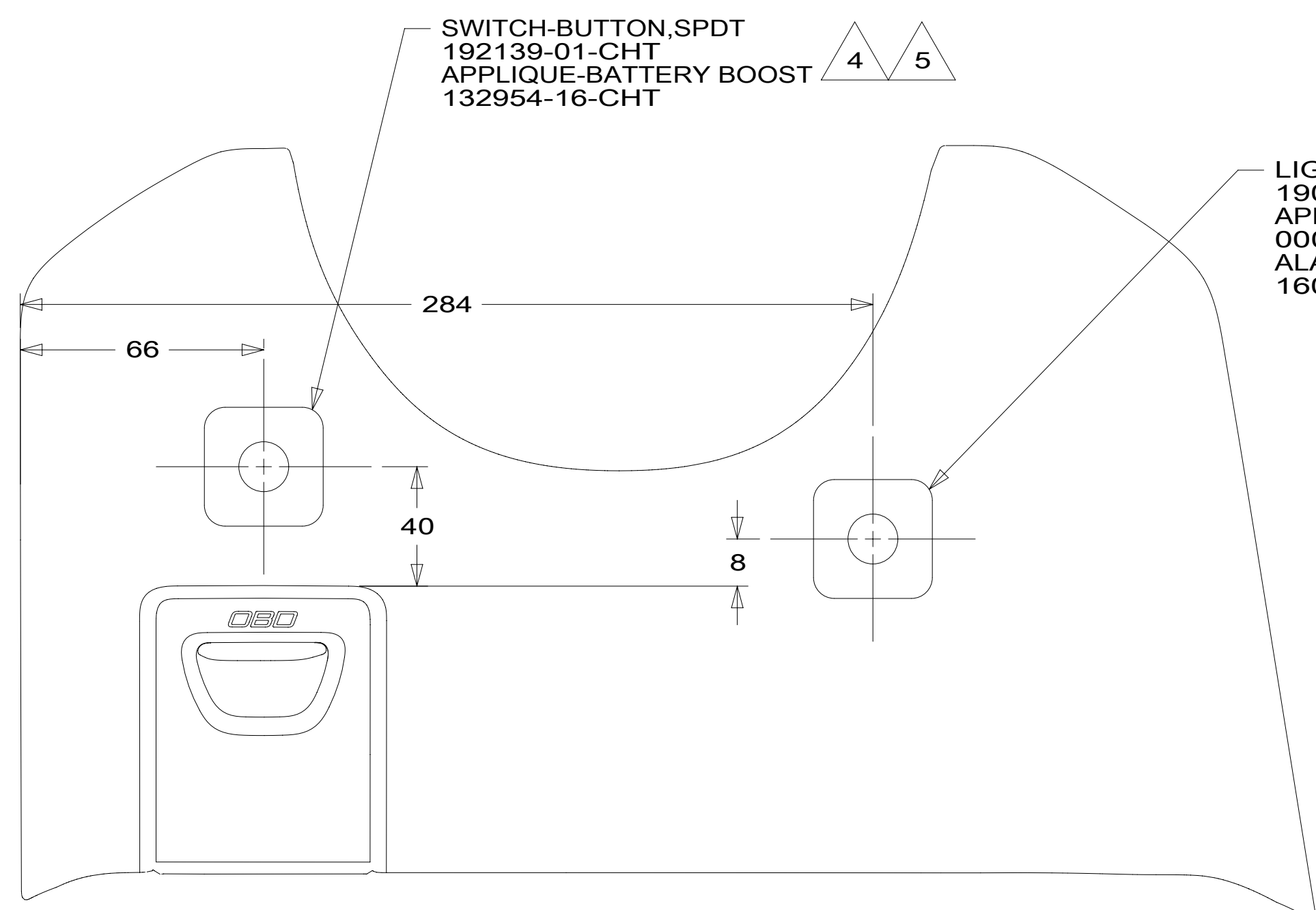
4 SEE DETAIL BB FOR CONNECTION OF BUTTON SWITCH.

3 SEE GENERATOR INSTL FOR ADDITIONAL INFORMATION.

2 SEE LOAD CENTER/ATS ASM FOR ADDITIONAL INFORMATION.

1 SEE BATTERY INSTL FOR ADDITIONAL INFORMATION.

NOTES:



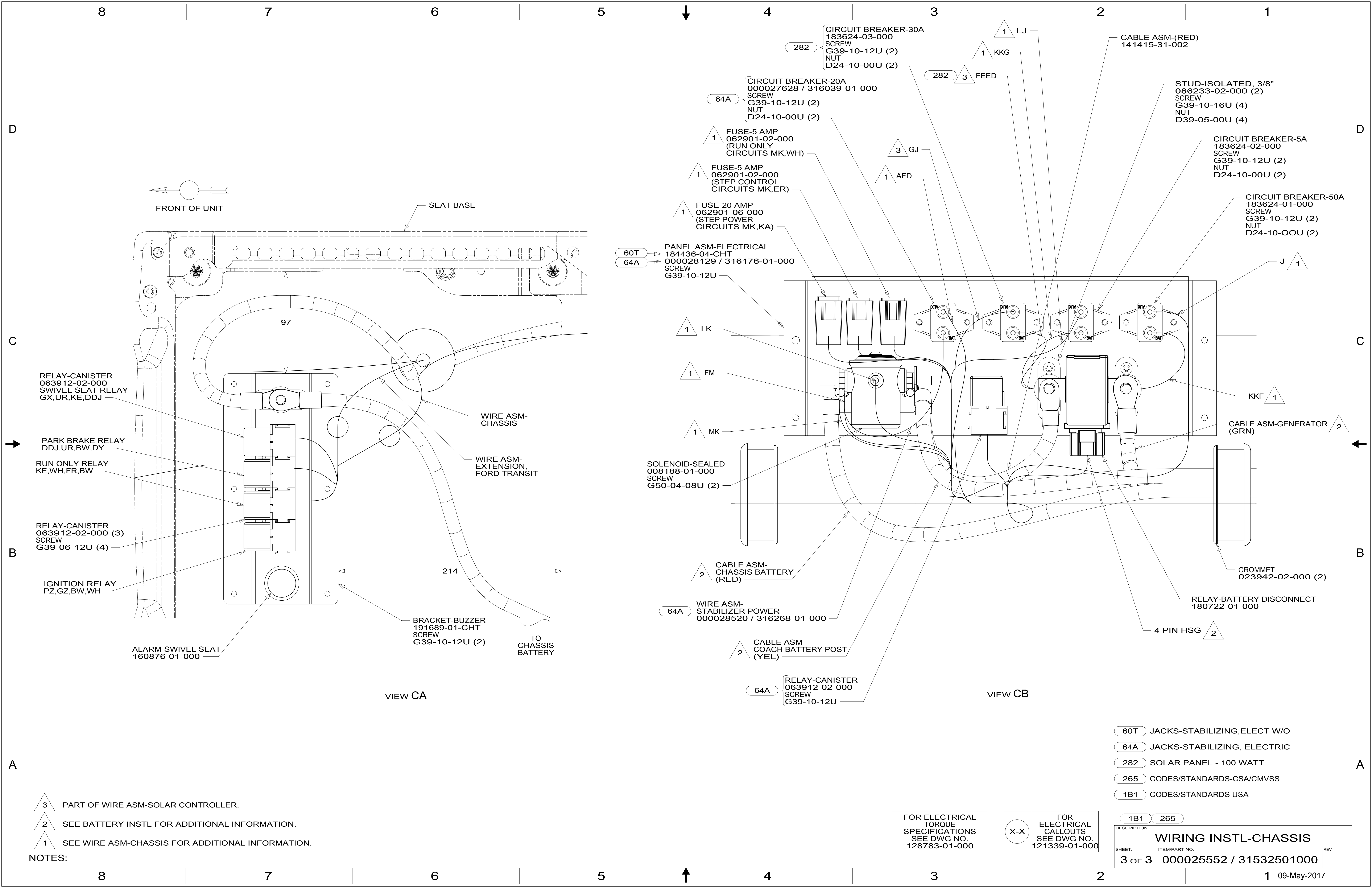
DETAIL BA

FOR ELECTRICAL TORQUE SPECIFICATIONS SEE DWG NO. 128783-01-000

X-X FOR ELECTRICAL CALLOUTS SEE DWG NO. 121339-01-000

- 64A JACKS-STABILIZING, ELECTRIC
- 1G8 GEN-2.8KW ONAN GAS
- 384 GEN 2.5KW ONAN-MICROLITE
- 265 CODES/STANDARDS-CSA/CMVSS
- 1B1 CODES/STANDARDS USA

DESCRIPTION:		1B1 265	
WIRING INSTL-CHASSIS			
SHEET:	ITEM/PART NO.:	REV	
2 OF 3	000025552 / 31532501000		



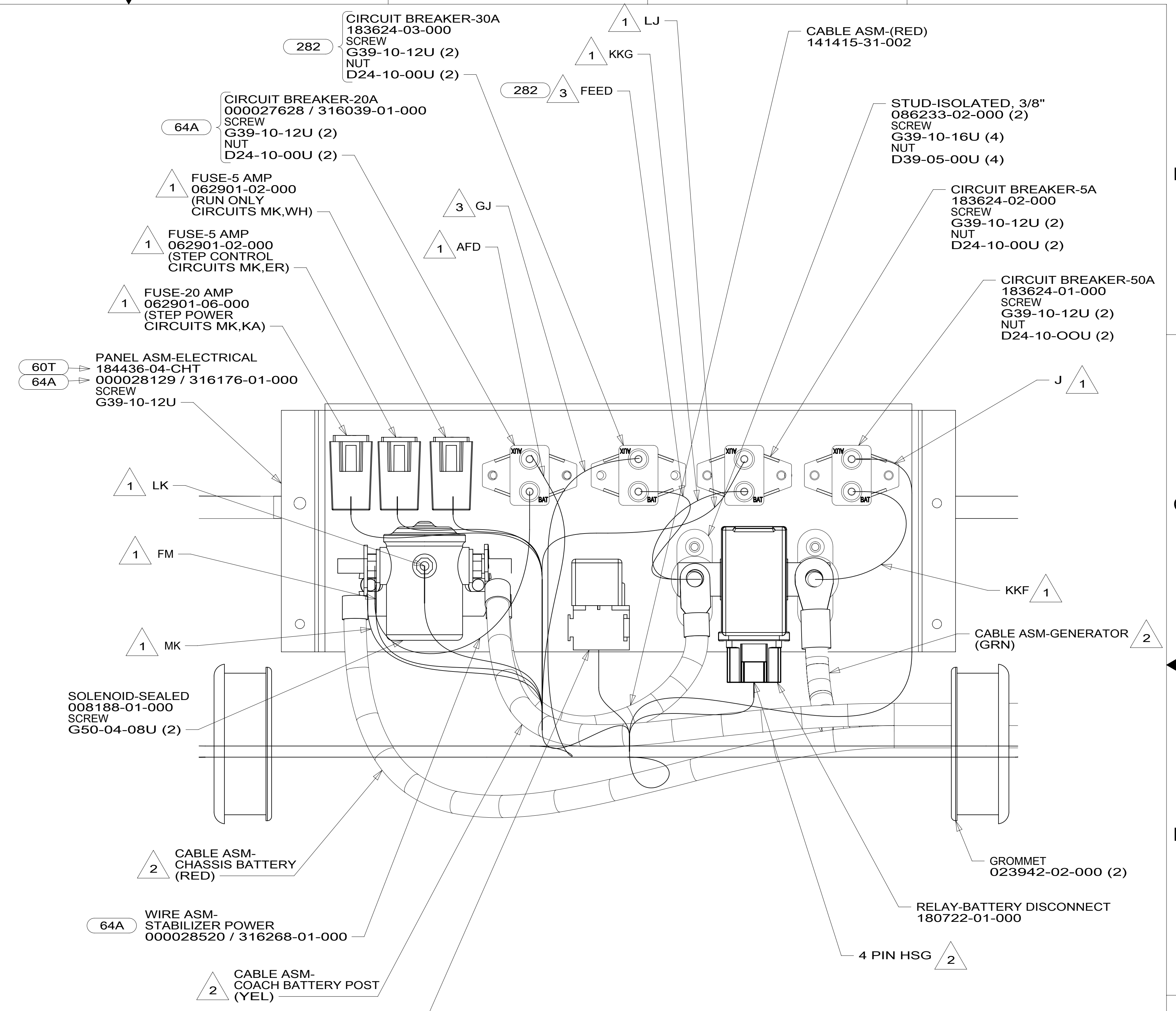
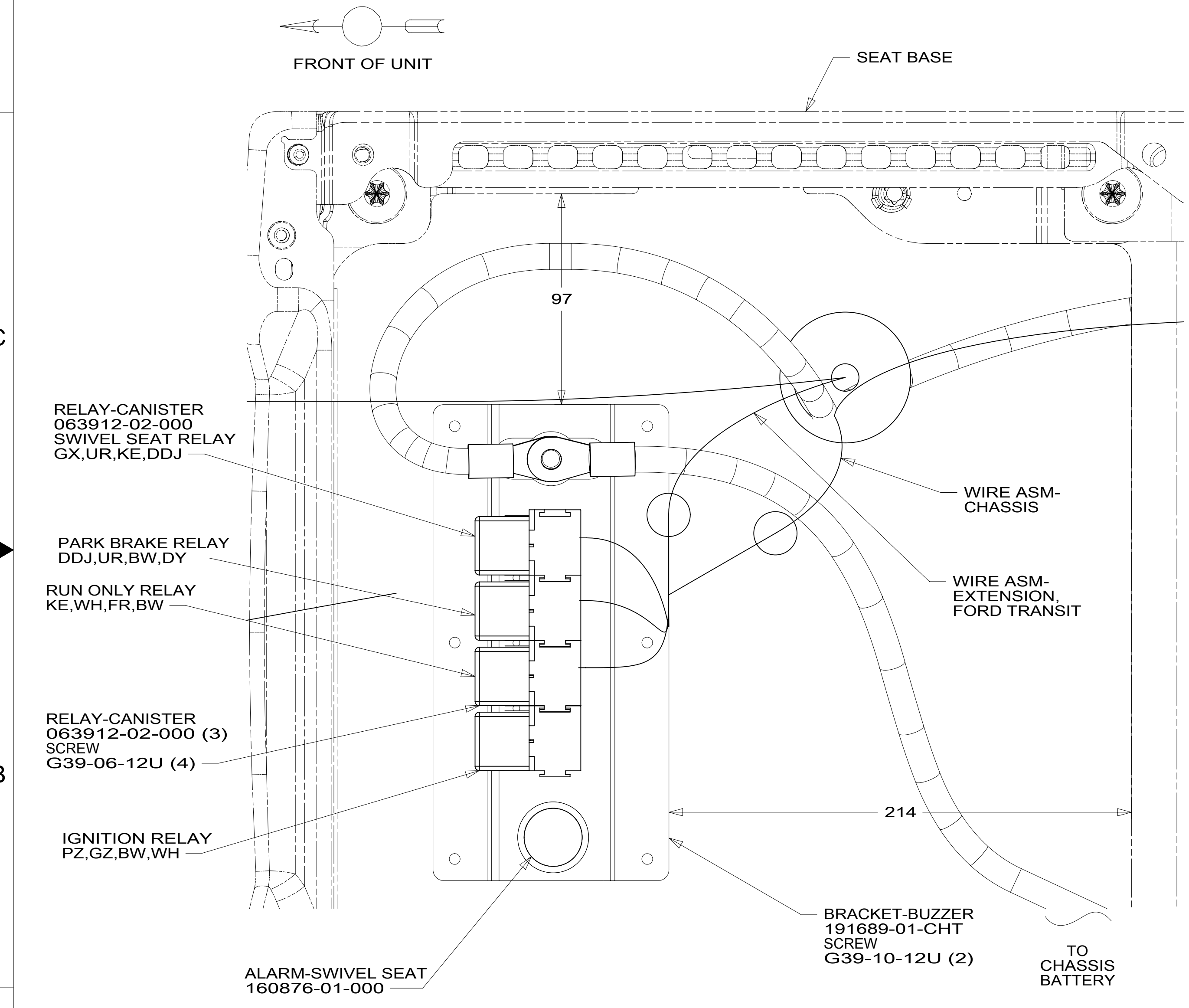
8 7 6 5 4 3 2 1

D

C

B

A



- NOTES:
- 3 PART OF WIRE ASM-SOLAR CONTROLLER.
 - 2 SEE BATTERY INSTL FOR ADDITIONAL INFORMATION.
 - 1 SEE WIRE ASM-CHASSIS FOR ADDITIONAL INFORMATION.

FOR ELECTRICAL TORQUE SPECIFICATIONS SEE DWG NO. 128783-01-000

FOR ELECTRICAL CALLOUTS SEE DWG NO. 121339-01-000

- 60T JACKS-STABILIZING,ELECT W/O
- 64A JACKS-STABILIZING, ELECTRIC
- 282 SOLAR PANEL - 100 WATT
- 265 CODES/STANDARDS-CSA/CMVSS
- 1B1 CODES/STANDARDS USA

DESCRIPTION:		1B1 265	
WIRING INSTL-CHASSIS			
SHEET:	ITEM/PART NO.:	REV	
3 OF 3	000025552 / 31532501000		

8 7 6 5 4 3 2 1 09-May-2017