

8

7

6

5



4

3

2

1

RED	1B1	136135-07-040
	265	136136-07-040
YEL	1B1	136131-05-017
	265	136134-05-017
BLK	1B1	136135-06-010
	265	136136-06-010
BRN	1B1	136131-03-047
	265	136134-03-047
BLU	1B1	136131-02-065
	265	136134-02-065
MAIN	1B1	136137-01-040
	265	136138-01-040
BLK-2	1B1	136135-22-040
	265	136136-22-040
WHT	1B1	136135-09-027
	265	136136-09-027
THROW IN WIRE #1	1B1	136131-03-040
	265	136134-03-040
THROW IN WIRE #2	1B1	136131-02-024
	265	136134-02-024
THROW IN WIRE #3	1B1	136131-02-038
	265	136134-02-038
THROW IN WIRE #4	1B1	136131-02-045
	265	136134-02-045
CONVERTER FEED POS		174023-01-000 (700 MM)
CONVERTER FEED NEG		174023-02-000 (700 MM)

- 265 CODES/STANDARDS-CSA/CMVSS
- 1B1 CODES/STANDARDS USA
- 1B1 265

WINNEBAGO
COPYRIGHT 2016 WINNEBAGO INDUSTRIES, INC.

DSNR:		ALL DIMENSIONS ARE IN MILLIMETERS	
DIFFR:			
UNSPECIFIED TOLERANCES:	MATERIAL:		
WHOLE DIM (X) :		3	
ONE-PLACE (X.X) :		1.5	
TWO-PLACE (X.XX) :		0.50	
ANGLE :		1°	
REFER TO ES0018 FOR FASTENER TIGHTENING GUIDELINES		WEIGHT: (LBS)	FIRST USED:
			17 423T
LOAD CENTER/ATS ASM			
SHEET:	ITEM/PART NO.:	REV	
1 OF 3	000025538 / 31532201000		
REF:		1 27-Feb-2017	

FOR ELECTRICAL TORQUE SPECIFICATIONS SEE DWG NO. 128783-01-000

FOR ELECTRICAL CALLOUTS SEE DWG NO. 121339-01-000

NOTES:
1. ALL GROUND WIRES TO BE COVERED WITH TUBING 8041-02-000.

8

7

6

5

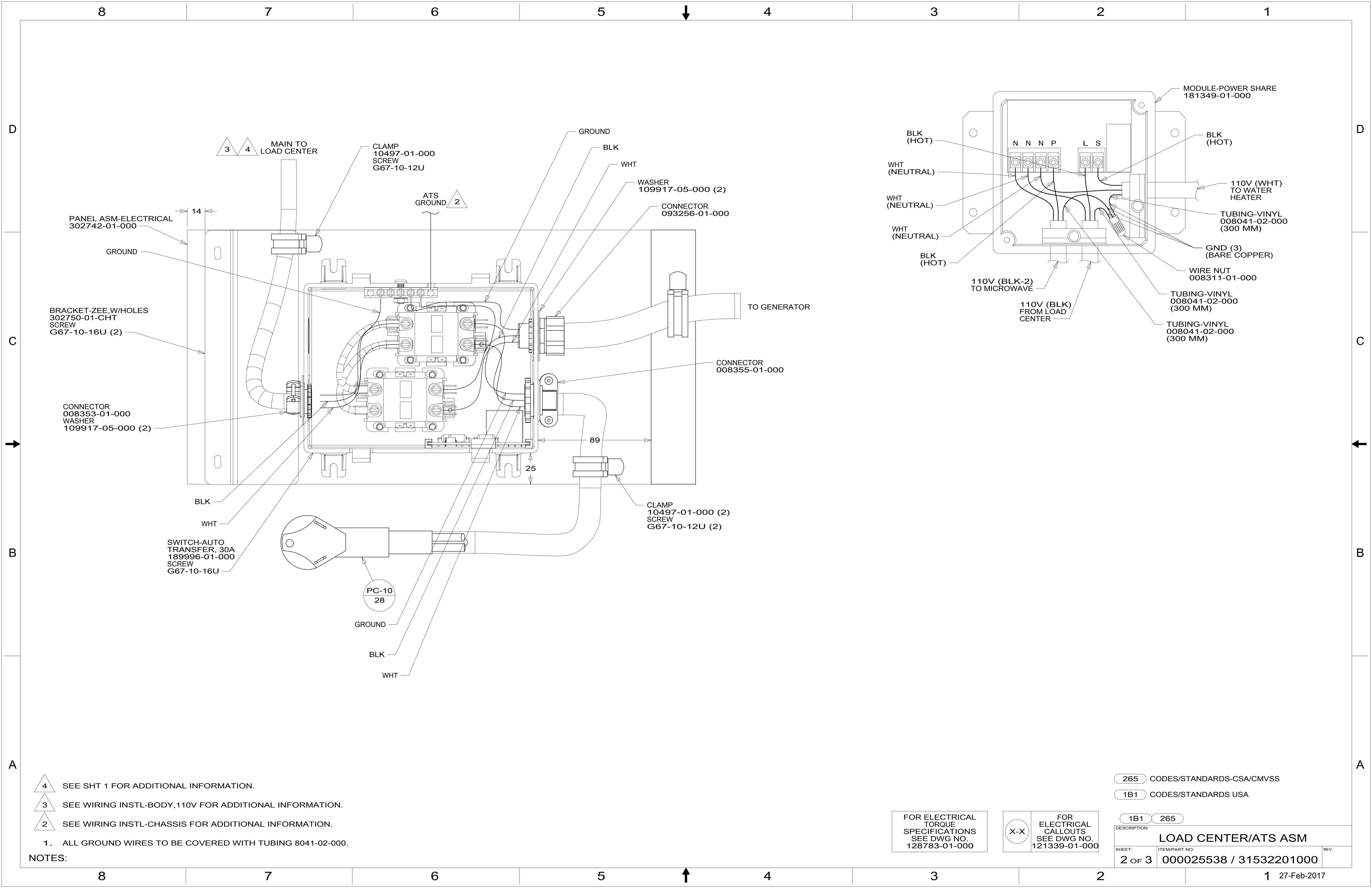


4

3

2

1 27-Feb-2017



PANEL ASM-ELECTRICAL
302742-01-000

BRACKET-ZEE,W/HOLES
302750-01-CHT
SCREW
G67-10-16U (2)

CONNECTOR
008353-01-000
WASHER
109917-05-000 (2)

SWITCH-AUTO
TRANSFER, 30A
189996-01-000
SCREW
G67-10-16U

CLAMP
10497-01-000
SCREW
G67-10-12U

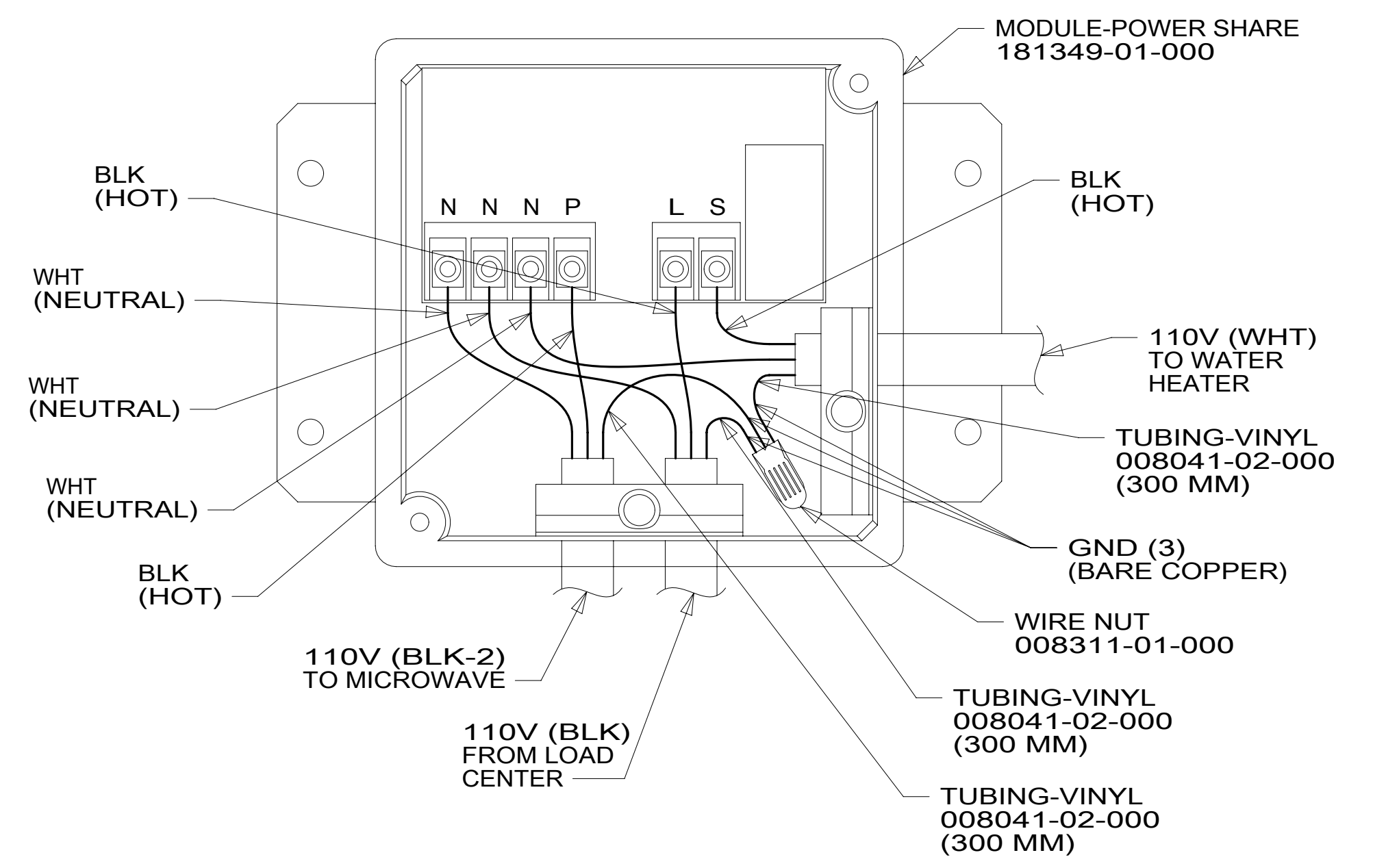
ATS
GROUND 2

CONNECTOR
093256-01-000

CONNECTOR
008355-01-000

CLAMP
10497-01-000 (2)
SCREW
G67-10-12U (2)

PC-10
28



- 4 SEE SHT 1 FOR ADDITIONAL INFORMATION.
- 3 SEE WIRING INSTL-BODY, 110V FOR ADDITIONAL INFORMATION.
- 2 SEE WIRING INSTL-CHASSIS FOR ADDITIONAL INFORMATION.

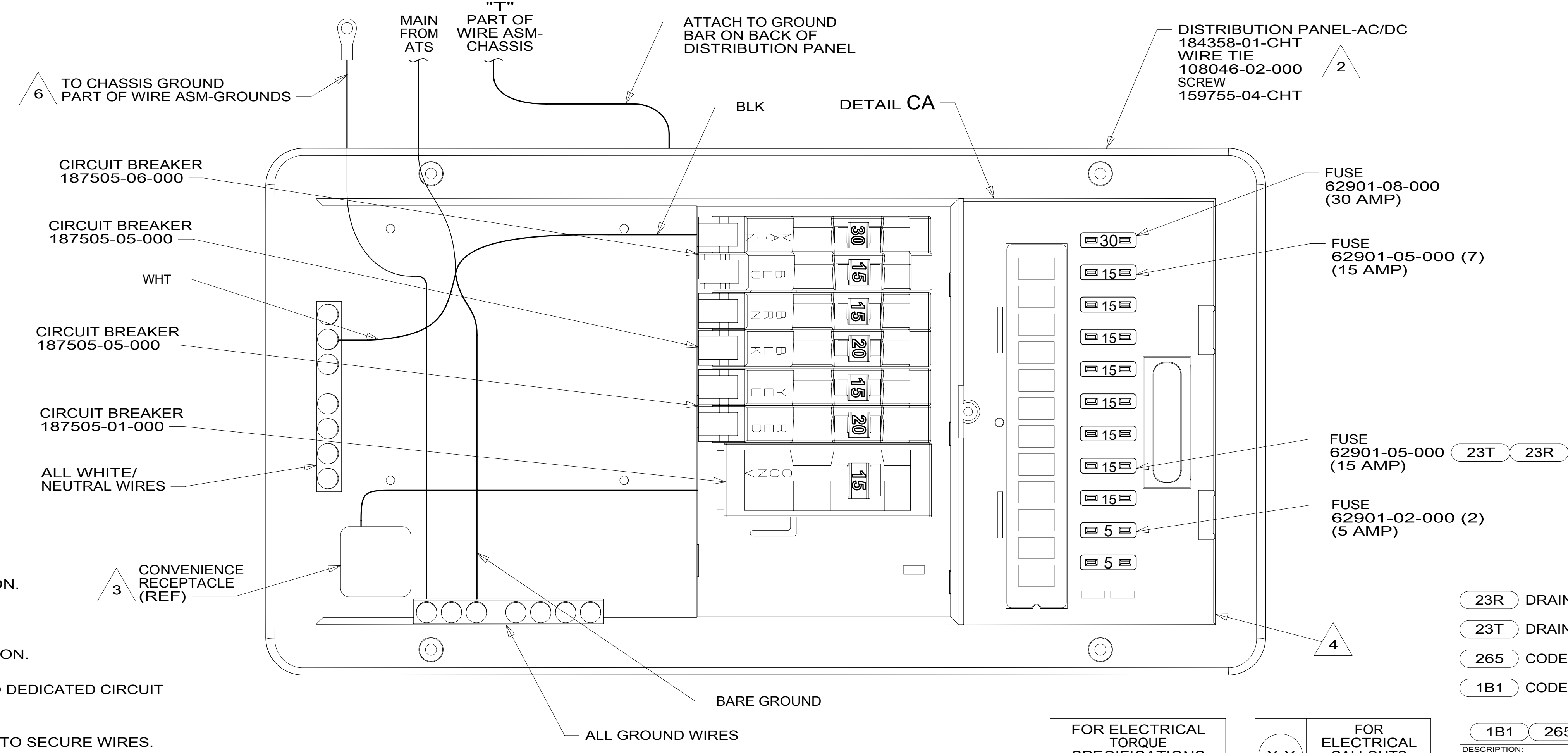
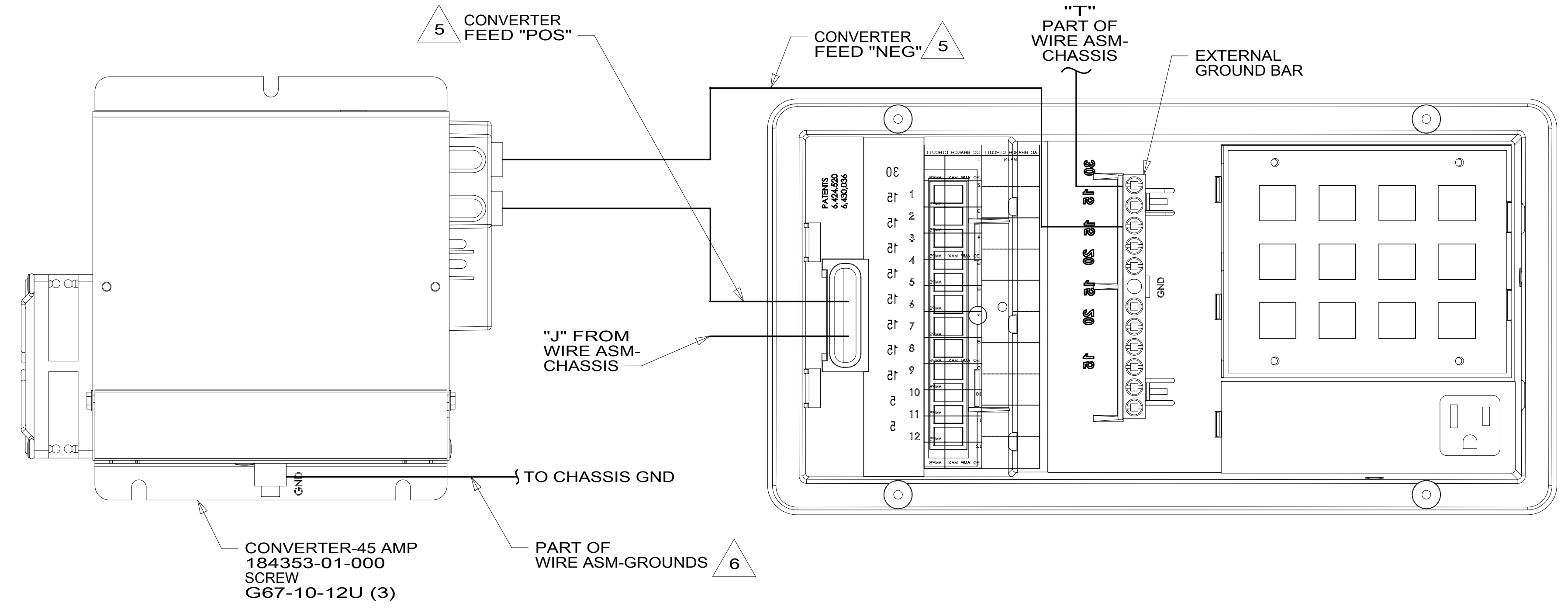
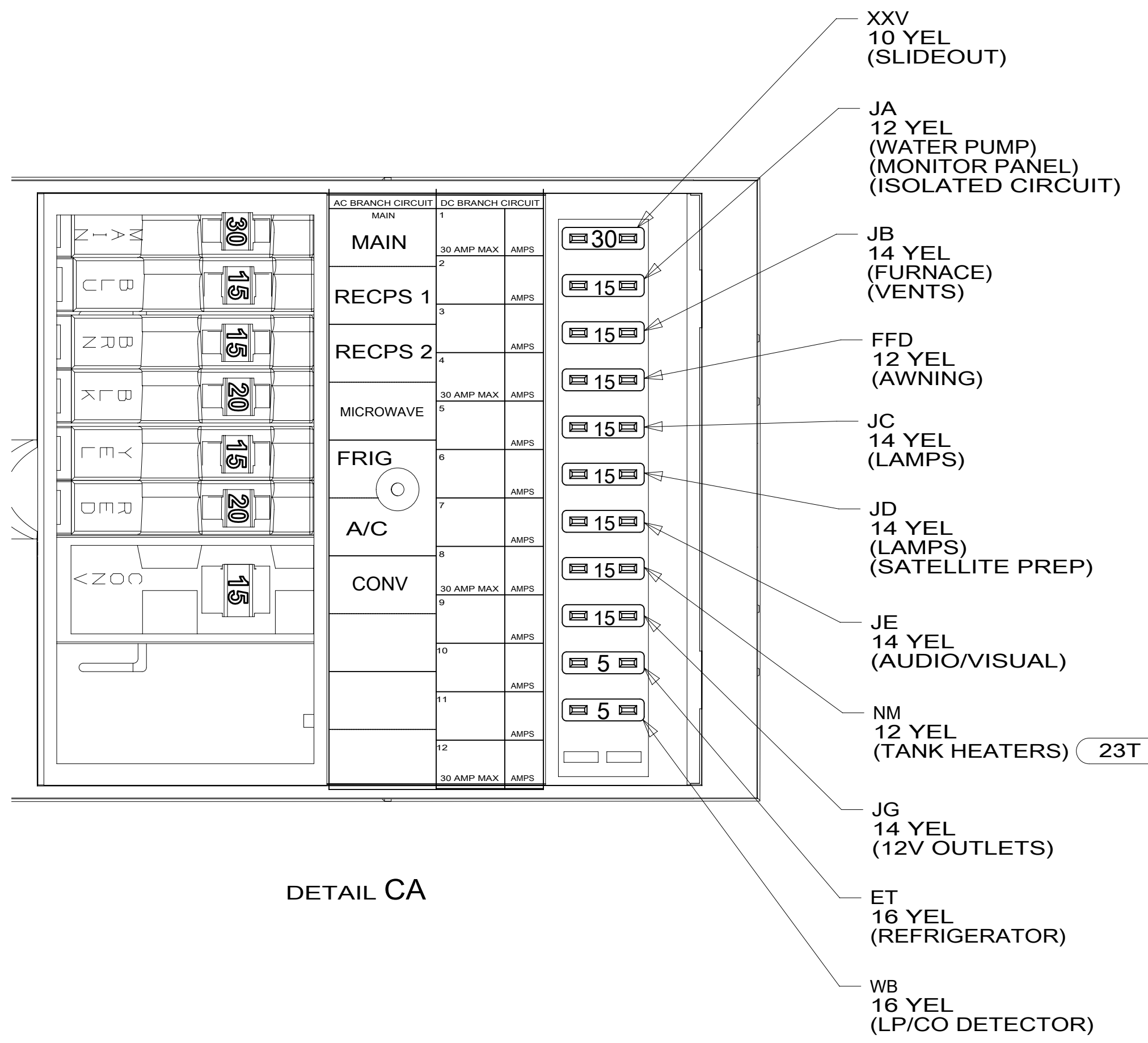
NOTES:
1. ALL GROUND WIRES TO BE COVERED WITH TUBING 8041-02-000.

FOR ELECTRICAL
TORQUE
SPECIFICATIONS
SEE DWG NO.
128783-01-000

FOR
ELECTRICAL
CALLOUTS
SEE DWG NO.
121339-01-000

- 265 CODES/STANDARDS-CSA/CMVSS
- 1B1 CODES/STANDARDS USA

DESCRIPTION: LOAD CENTER/ATS ASM	
SHEET: 2 OF 3	ITEM/PART NO: 000025538 / 31532201000
REV 1 27-Feb-2017	



- 6 SEE WIRING INSTL-CHASSIS FOR ADDITIONAL INFORMATION.
- 5 SEE SHT 1 FOR ADDITIONAL INFORMATION.
- 4 SEE WIRING INSTL-BODY, 12V FOR ADDITIONAL INFORMATION.
- 3 CONNECT BLACK WIRE FROM CONVENIENCE RECEPTACLE TO DEDICATED CIRCUIT BREAKER.
- 2 ATTACH TO UNUSED SCREW HOLE ON BACK SIDE OF PANEL TO SECURE WIRES.

NOTES:
1. ALL GROUND WIRES TO BE COVERED WITH TUBING 8041-02-000.

FOR ELECTRICAL TORQUE SPECIFICATIONS SEE DWG NO. 128783-01-000

X-X

FOR ELECTRICAL CALLOUTS SEE DWG NO. 121339-01-000

- 23R DRAINAGE SYSTEM/HEAT-PREWIRE
- 23T DRAINAGE SYSTEM-HEATED
- 265 CODES/STANDARDS-CSA/CMVSS
- 1B1 CODES/STANDARDS USA

DESCRIPTION:	1B1 265	
LOAD CENTER/ATS ASM		
SHEET:	ITEM/PART NO.:	REV
3 OF 3	000025538 / 31532201000	