

9. ALL CRIMP FITTINGS TO 3/4" PEX TUBING REQUIRE 3/4" CLAMP 140171-05-000.
 8. ALL CRIMP FITTINGS TO 1/2" PEX TUBING REQUIRE 1/2" CLAMP 140171-03-000.
 7. ALL CRIMP FITTINGS TO 5/8" FLEX TUBING REQUIRE 5/8" CLAMP 140171-04-000.
 6 LABEL HOT AND COLD SUPPLY TUBES AND TAPE FITTING TO TUBE BEFORE CABINET SET TO PREVENT MOVEMENT.
 5 ADD PIPE WRAP (LADDER SCRAP 110157-02-000) INSULATION.
 4 ADD TEFLON TAPE 010405-01-000.
 3. ALL TUBING TO BE SECURED AT 1200 INTERVALS MAXIMUM WITH CLAMP 010495-01-000 AND SCREW 000G67-10-12U OR EQUIVALENT.
 2. TUBING TO BE INSTALLED WITH SUFFICIENT SLOPE TO PROVIDE DRAINAGE TO NEAREST VALVE.
 1. PLASTIC FITTINGS TO BE SEALED WITH SEALANT 084456-01-000.

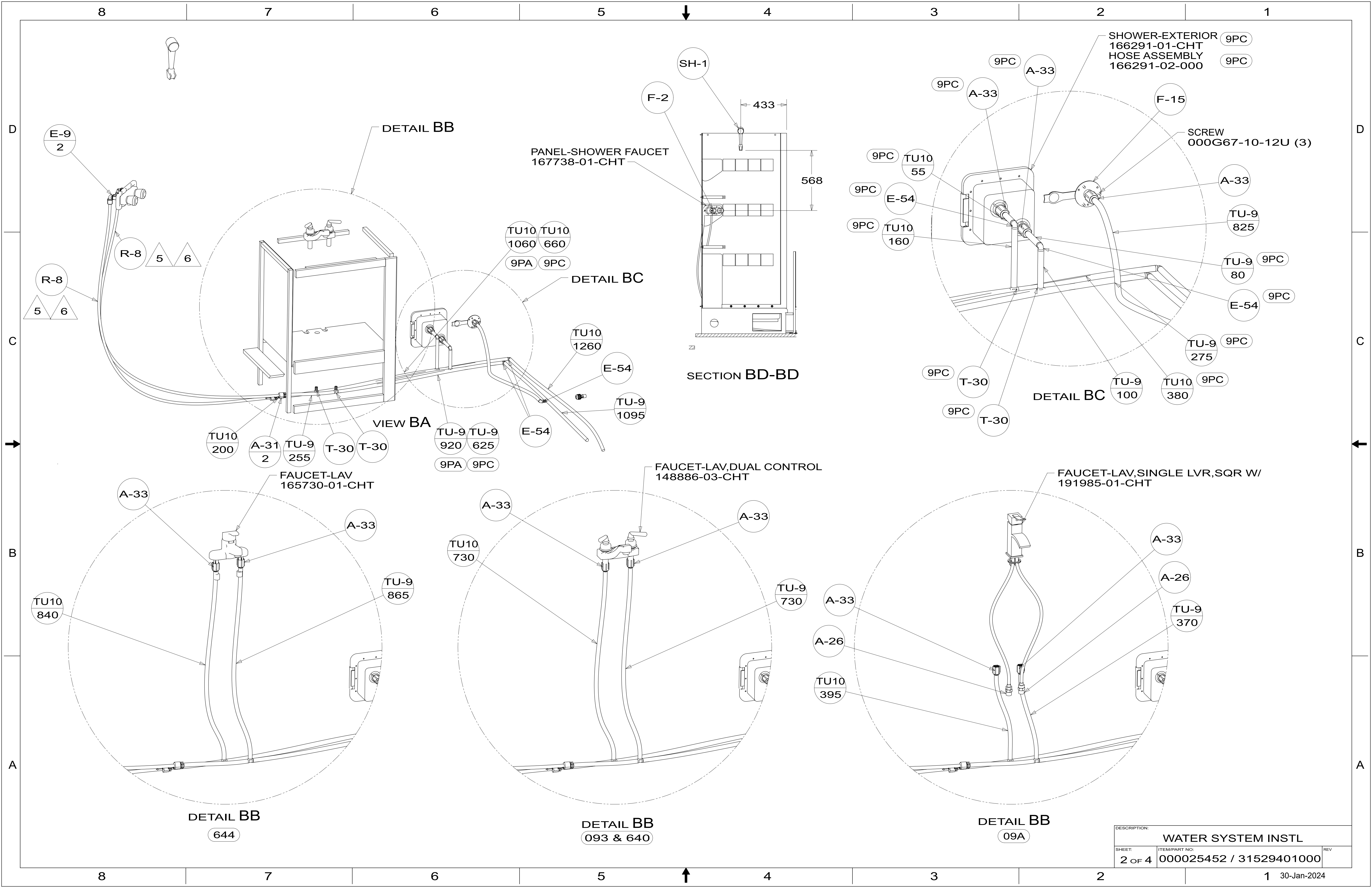
NOTES:

- 093 PREMIUM PACKAGE WITHOUT
- 09A PREMIUM PACKAGE
- 9PA TAILGATE PACKAGE WITHOUT
- 9PC TAILGATE PACKAGE
- 640 RENTAL - GAH WITHOUT
- 644 GREAT ALASKAN RENTAL PACKAGE
- 38E CONVENIENCE PACKAGE



DSNR:		ALL DIMENSIONS ARE IN MILLIMETERS	
DFTR:		MATERIAL:	
UNSPECIFIED TOLERANCES:			
WHOLE DIM (X)	3		
ONE-PLACE (X.X)	1.5		
TWO-PLACE (X.XX)	0.50		
ANGLE	1°		
REFER TO ES0018 FOR FASTENER TIGHTENING GUIDELINES		WEIGHT: (LBS)	FIRST USED: (REF)
DESCRIPTION:		17 331G	
WATER SYSTEM INSTL			
SHEET:	ITEM/PART NO.:	REV	
1 OF 4	000025452 / 31529401000		

X-X
 FOR WATER CALLOUTS SEE DWG NO. 000209446 / 303369-01-000



SHOWER-EXTERIOR 9PC
 166291-01-CHT
 HOSE ASSEMBLY 9PC
 166291-02-000

PANEL-SHOWER FAUCET
 167738-01-CHT

SECTION BD-BD

FAUCET-LAV, DUAL CONTROL
 148886-03-CHT

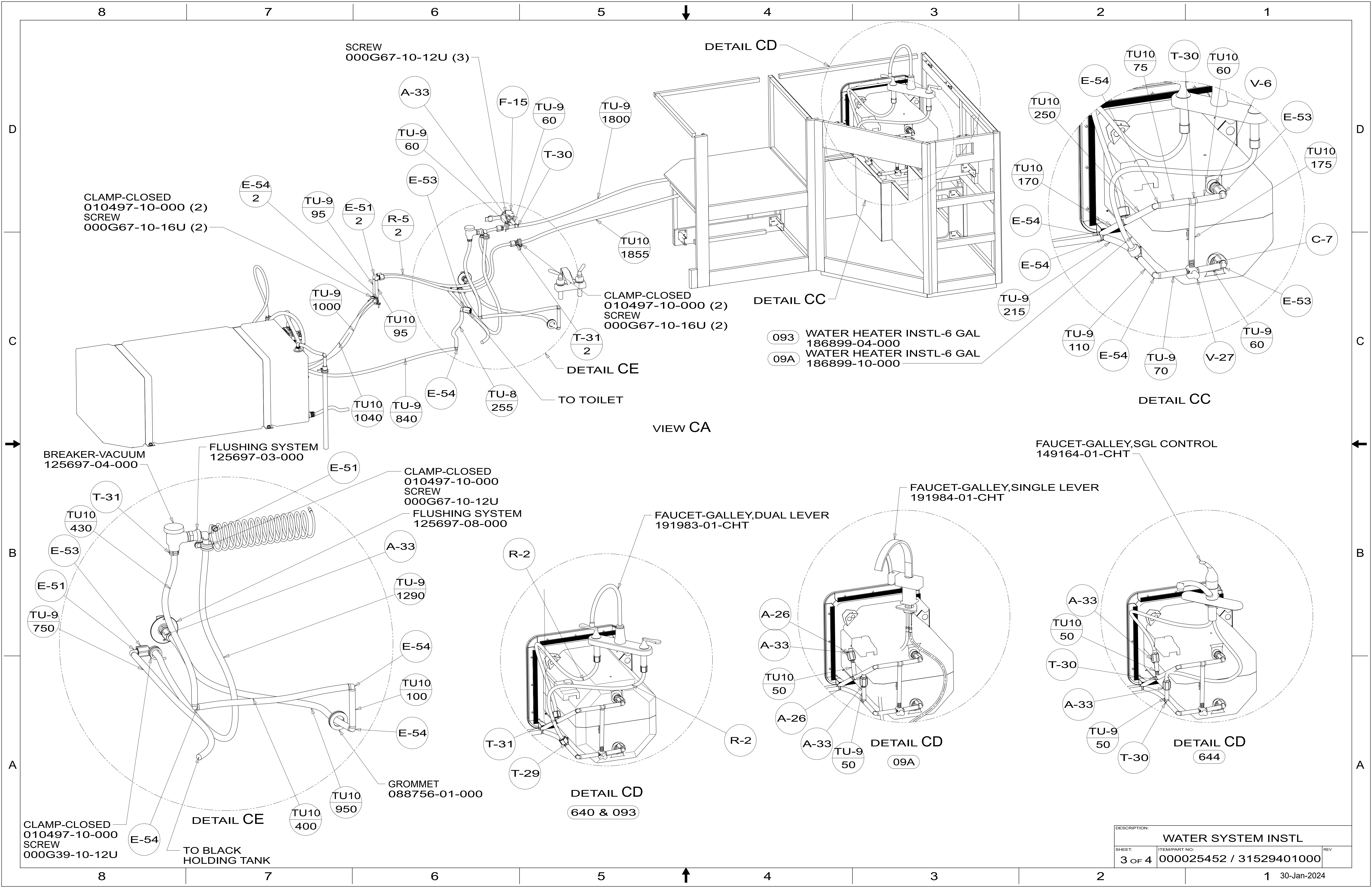
FAUCET-LAV, SINGLE LVR, SQR W/
 191985-01-CHT

DETAIL BB
 644

DETAIL BB
 093 & 640

DETAIL BB
 09A

DESCRIPTION:		
WATER SYSTEM INSTL		
SHEET:	ITEM/PART NO.:	REV:
2 OF 4	000025452 / 31529401000	



SCREW
000G67-10-12U (3)

DETAIL CD

CLAMP-CLOSED
010497-10-000 (2)
SCREW
000G67-10-16U (2)

CLAMP-CLOSED
010497-10-000 (2)
SCREW
000G67-10-16U (2)

- 093 WATER HEATER INSTL-6 GAL
186899-04-000
- 09A WATER HEATER INSTL-6 GAL
186899-10-000

VIEW CA

FAUCET-GALLEY,SGL CONTROL
149164-01-CHT

BREAKER-VACUUM
125697-04-000

FLUSHING SYSTEM
125697-03-000

CLAMP-CLOSED
010497-10-000
SCREW
000G67-10-12U
FLUSHING SYSTEM
125697-08-000

FAUCET-GALLEY,DUAL LEVER
191983-01-CHT

FAUCET-GALLEY,SINGLE LEVER
191984-01-CHT

CLAMP-CLOSED
010497-10-000
SCREW
000G39-10-12U

DETAIL CE

DETAIL CD

640 & 093

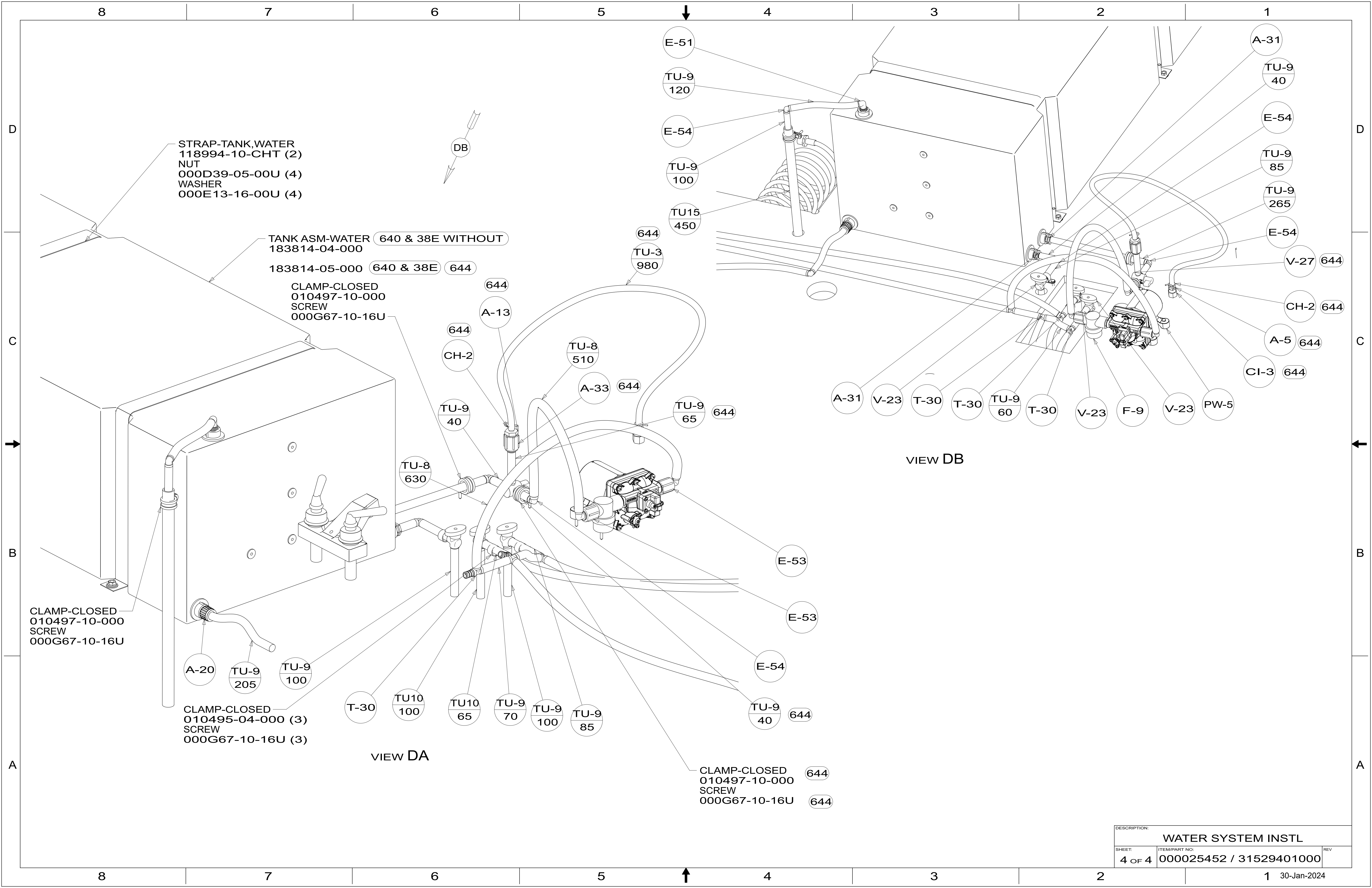
DETAIL CD

09A

DETAIL CD

644

DESCRIPTION: WATER SYSTEM INSTL		
SHEET: 3 OF 4	ITEM/PART NO: 000025452 / 31529401000	REV



DESCRIPTION:		
WATER SYSTEM INSTL		
SHEET:	ITEM/PART NO.:	REV
4 OF 4	000025452 / 31529401000	