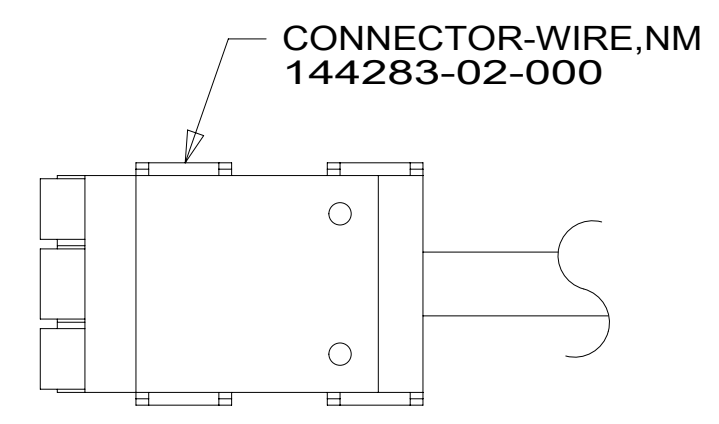


		331G	
RED	1B1	136135-07-035	
	265	136136-07-035	
YEL	1B1	136131-05-027	
	265	136134-05-027	
BLK	1B1	136135-06-010	
	265	136136-06-010	
BLK-2	1B1	136135-22-044	
	265	136136-22-044	
BRN	1B1	136131-03-061	
	265	136134-03-061	
BLU	1B1	136131-02-016	4
	265	136134-02-016	4
WHT	1B1	136135-09-099	09A
	265	136136-09-099	09A

		331G	
THROW IN WIRE #1	1B1	136131-02-016	
	265	136134-02-016	
THROW IN WIRE #2	1B1	136131-02-064	
	265	136134-02-064	
THROW IN WIRE #3	1B1	136131-03-018	9PC
	265	136134-03-018	9PC
THROW IN WIRE #4	1B1	136131-03-087	
	265	136134-03-087	
THROW IN WIRE #5	1B1	136131-02-081	
	265	136134-02-081	
THROW IN WIRE #6	1B1	136131-03-008	
	265	136134-03-008	
THROW IN WIRE #7	1B1	136131-02-095	4
	265	136134-02-095	4
THROW IN WIRE #8	1B1	136135-22-008	09A
	265	136136-22-008	09A
MAIN EXTENSION CABLE ASM	1B1	164957-13-045	093
	265	164957-14-045	093
MAIN EXTENSION CABLE ASM	1B1	164957-15-045	09A
	265	164957-16-045	09A
GENERATOR CABLE ASM	1B1	164957-15-032	093
	265	164957-16-032	093
GENERATOR CABLE ASM	1B1	164957-09-036	09A
	265	164957-10-036	09A
GROUND MAIN		136145-06-020	



DETAIL AA

- 9PC TAILGATE PACKAGE
- 265 CODES/STANDARDS-CSA/CMVSS
- 1B1 CODES/STANDARDS USA

1B1 265

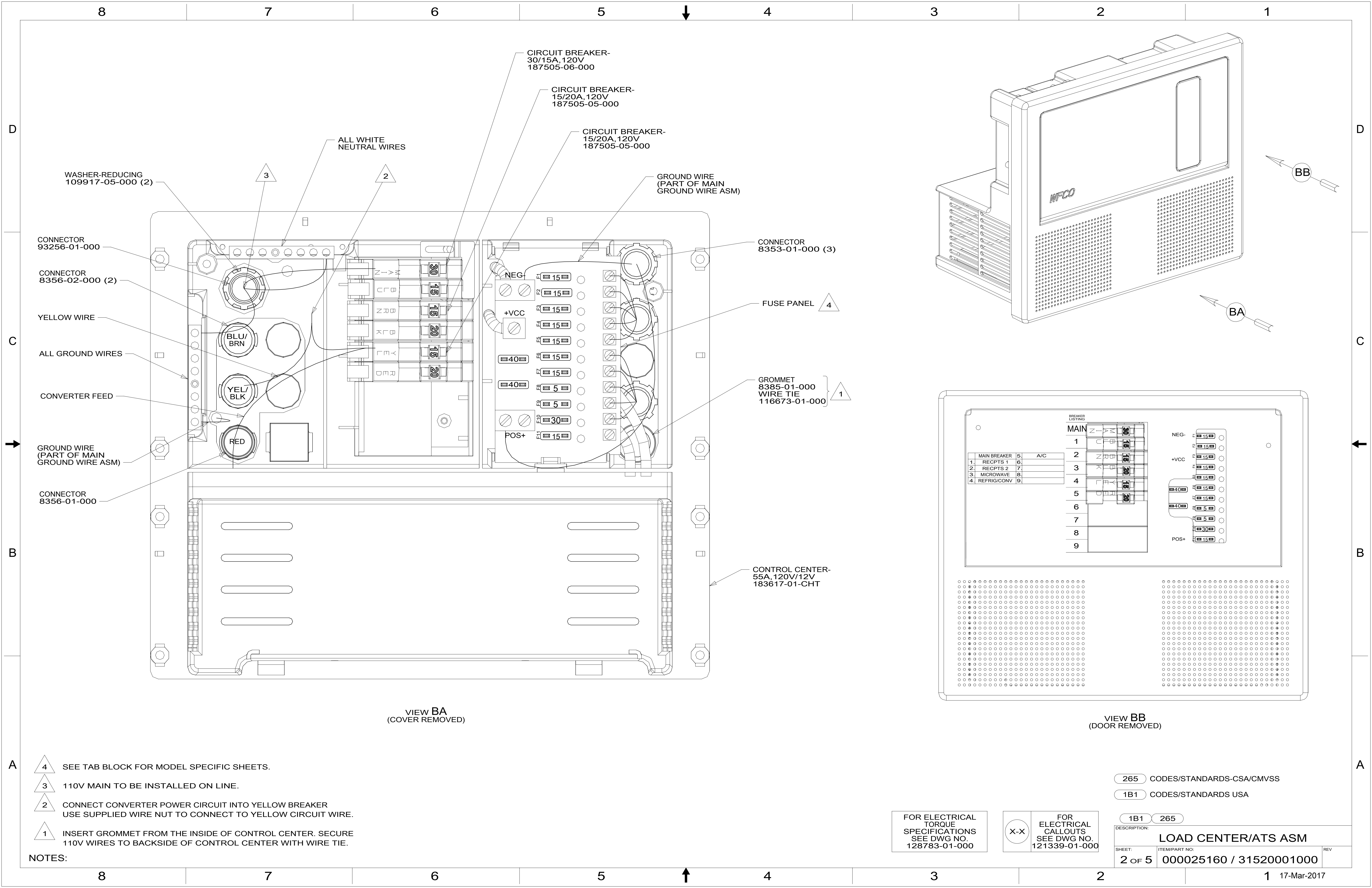
COPYRIGHT 2016 WINNEBAGO INDUSTRIES, INC.

DSNR:	ALL DIMENSIONS ARE IN MILLIMETERS
DFFR:	
UNSPECIFIED TOLERANCES:	MATERIAL:
WHOLE DIM (X) : 3	
ONE-PLACE (X.X) : 1.5	
TWO-PLACE (X.XX) : 0.50	
ANGLE : 1°	
REFER TO ES0018 FOR FASTENER TIGHTENING GUIDELINES	WEIGHT: (LBS) FIRST USED: 17 331G
DESCRIPTION: LOAD CENTER/ATS ASM	
SHEET: 1 OF 5	ITEM/PART NO: 000025160 / 31520001000
REF: 1	17-Mar-2017

- 4 SEE DETAIL AA FOR CONNECTOR INSTALLATION.
3. SEE WIRING INSTL-BODY, 12V FOR ADDITIONAL INFORMATION.
2. SECURE WIRES TO BACKSIDE OF LOAD CENTER WITH WIRE TIE 116673-01-000.
1. ALL GROUND WIRES TO BE COVERED WITH TUBING 8041-02-000.
- NOTES:

FOR ELECTRICAL TORQUE SPECIFICATIONS SEE DWG NO. 128783-01-000

FOR ELECTRICAL CALLOUTS SEE DWG NO. 121339-01-000



8

7

6

5

4

3

2

1

D

D

C

C

B

B

A

A

WASHER-REDUCING
109917-05-000 (2)CONNECTOR
93256-01-000CONNECTOR
8356-02-000 (2)

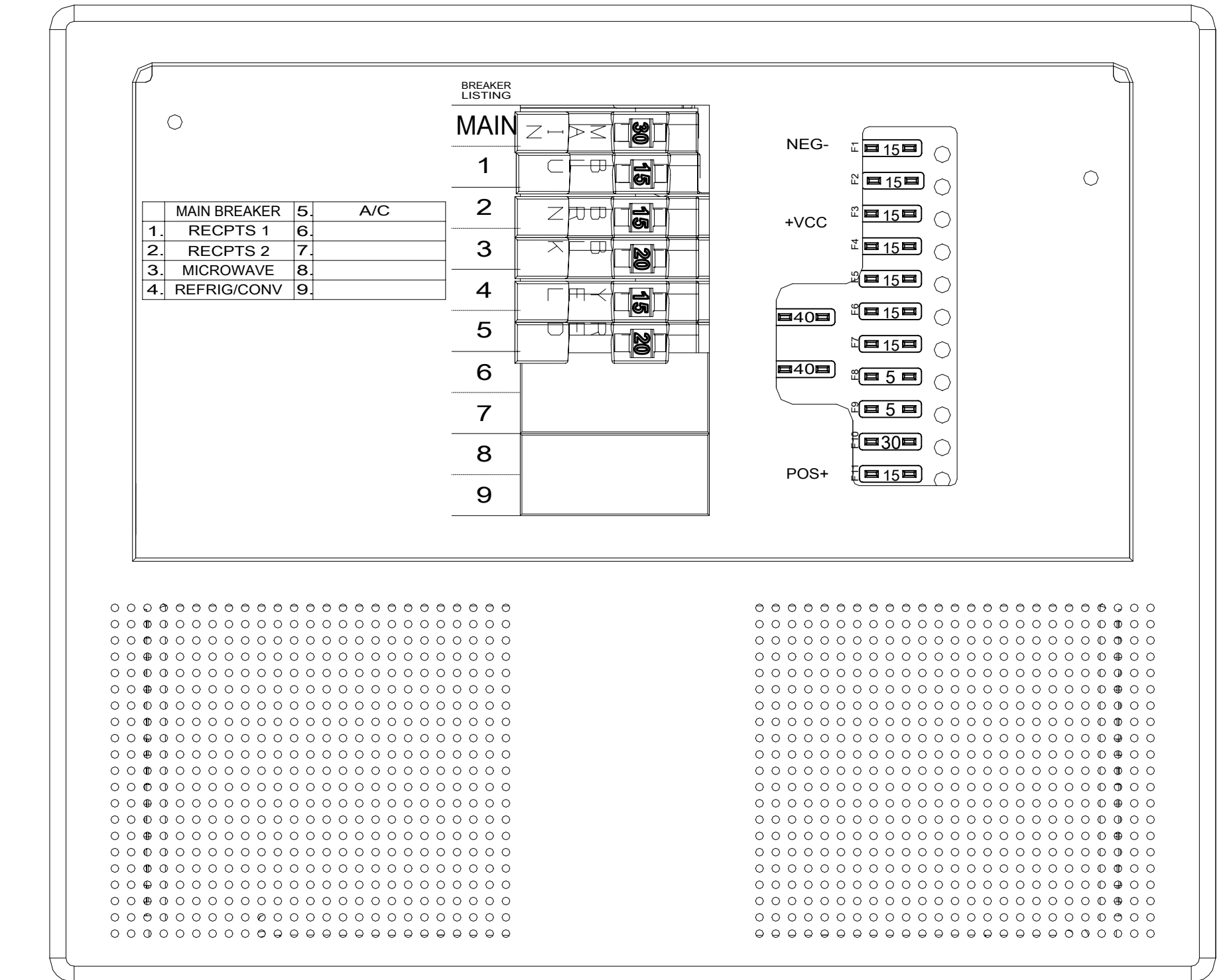
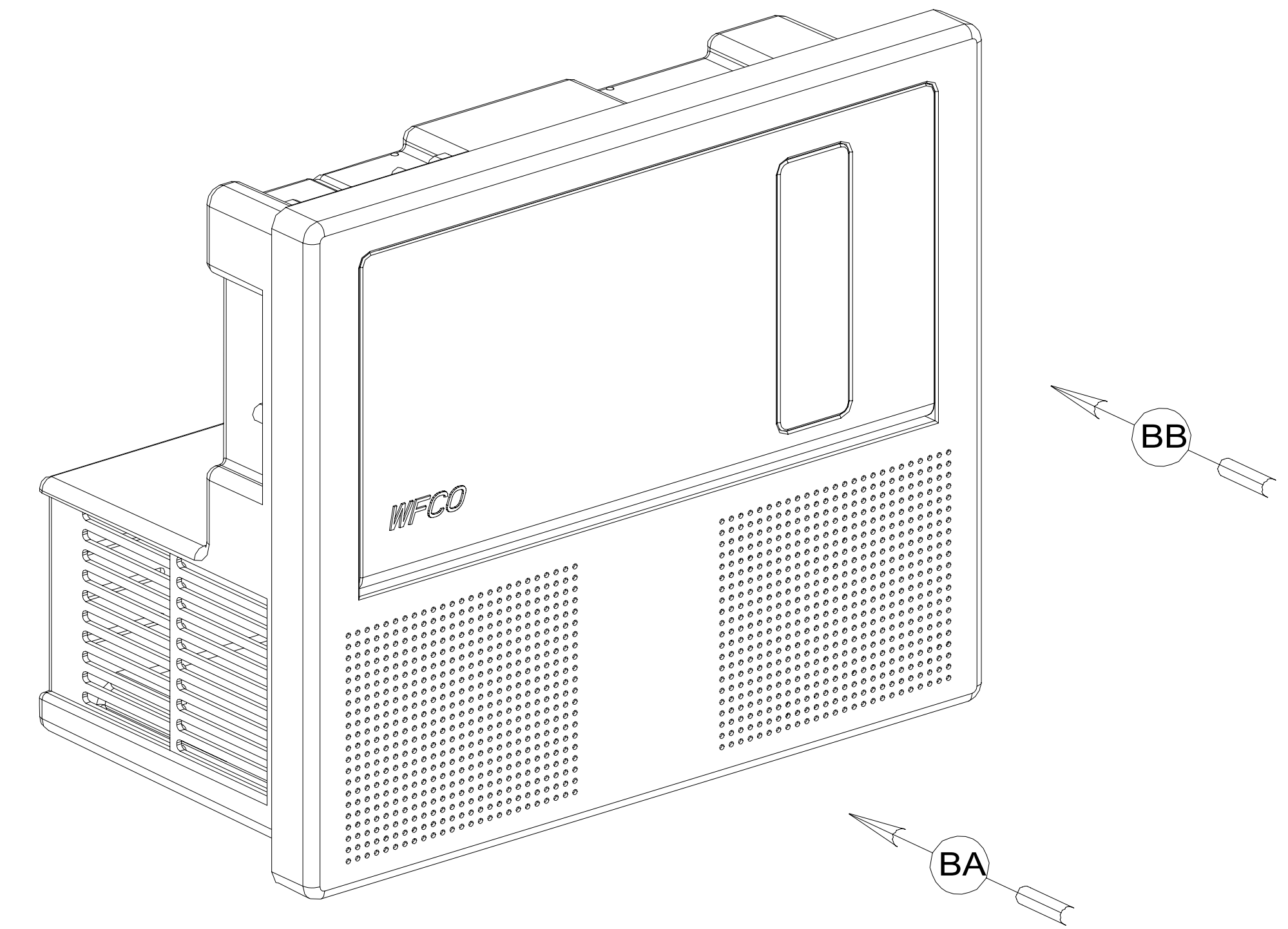
YELLOW WIRE

ALL GROUND WIRES

CONVERTER FEED

GROUND WIRE
(PART OF MAIN
GROUND WIRE ASM)CONNECTOR
8356-01-000VIEW BA
(COVER REMOVED)CIRCUIT BREAKER-
30/15A, 120V
187505-06-000CIRCUIT BREAKER-
15/20A, 120V
187505-05-000CIRCUIT BREAKER-
15/20A, 120V
187505-05-000GROUND WIRE
(PART OF MAIN
GROUND WIRE ASM)CONNECTOR
8353-01-000 (3)

FUSE PANEL 4

GROMMET
8385-01-000
WIRE TIE
116673-01-000 1CONTROL CENTER-
55A, 120V/12V
183617-01-CHTVIEW BB
(DOOR REMOVED)

NOTES:

8

7

6

5

4

3

2

1

17-Mar-2017

8

7

6

5

4

3

2

1

D

D

C

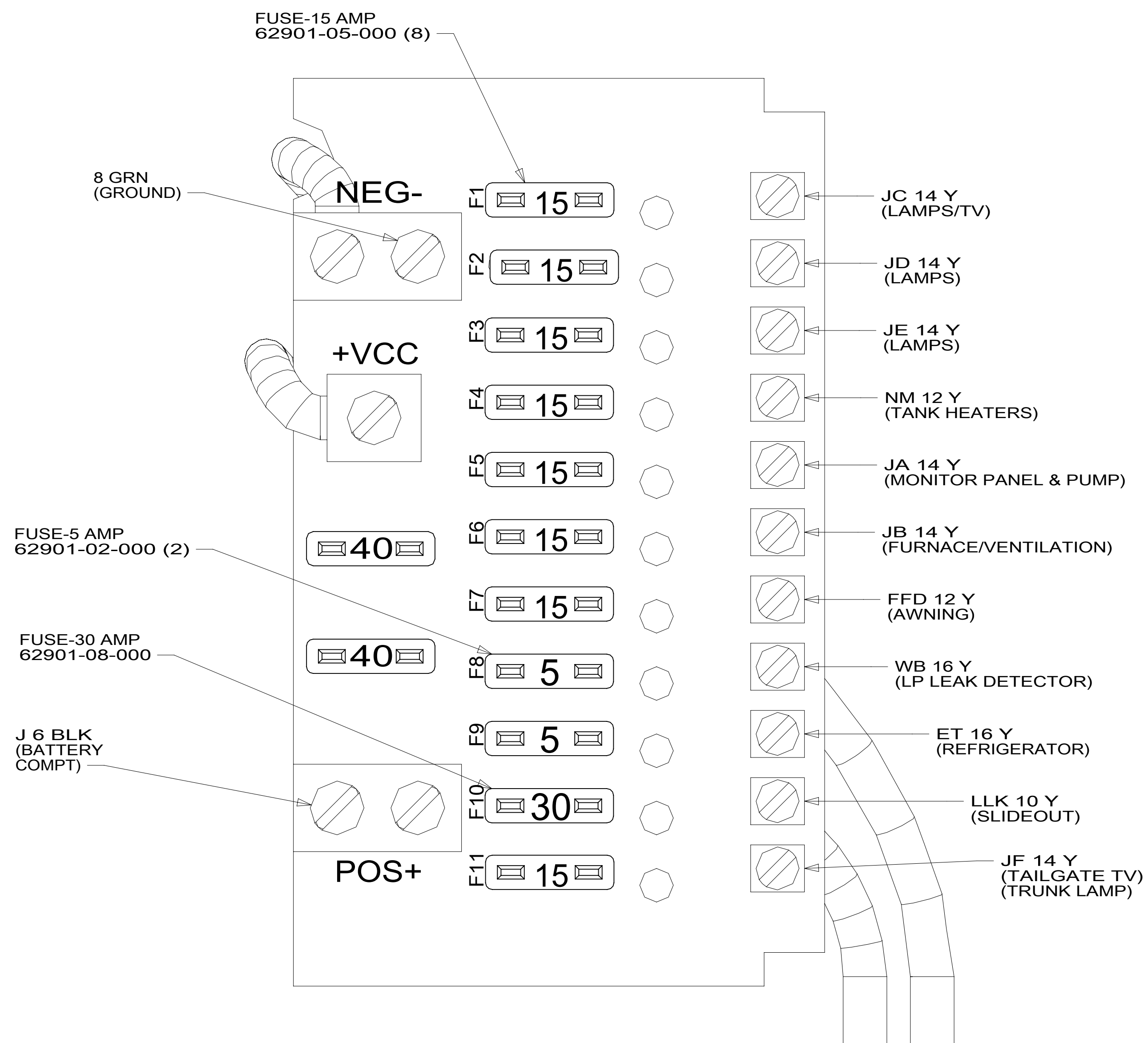
C

B

B

A

A



NOTES:
 1. ALL GROUND WIRES TO BE COVERED WITH TUBING 8041-02-000.

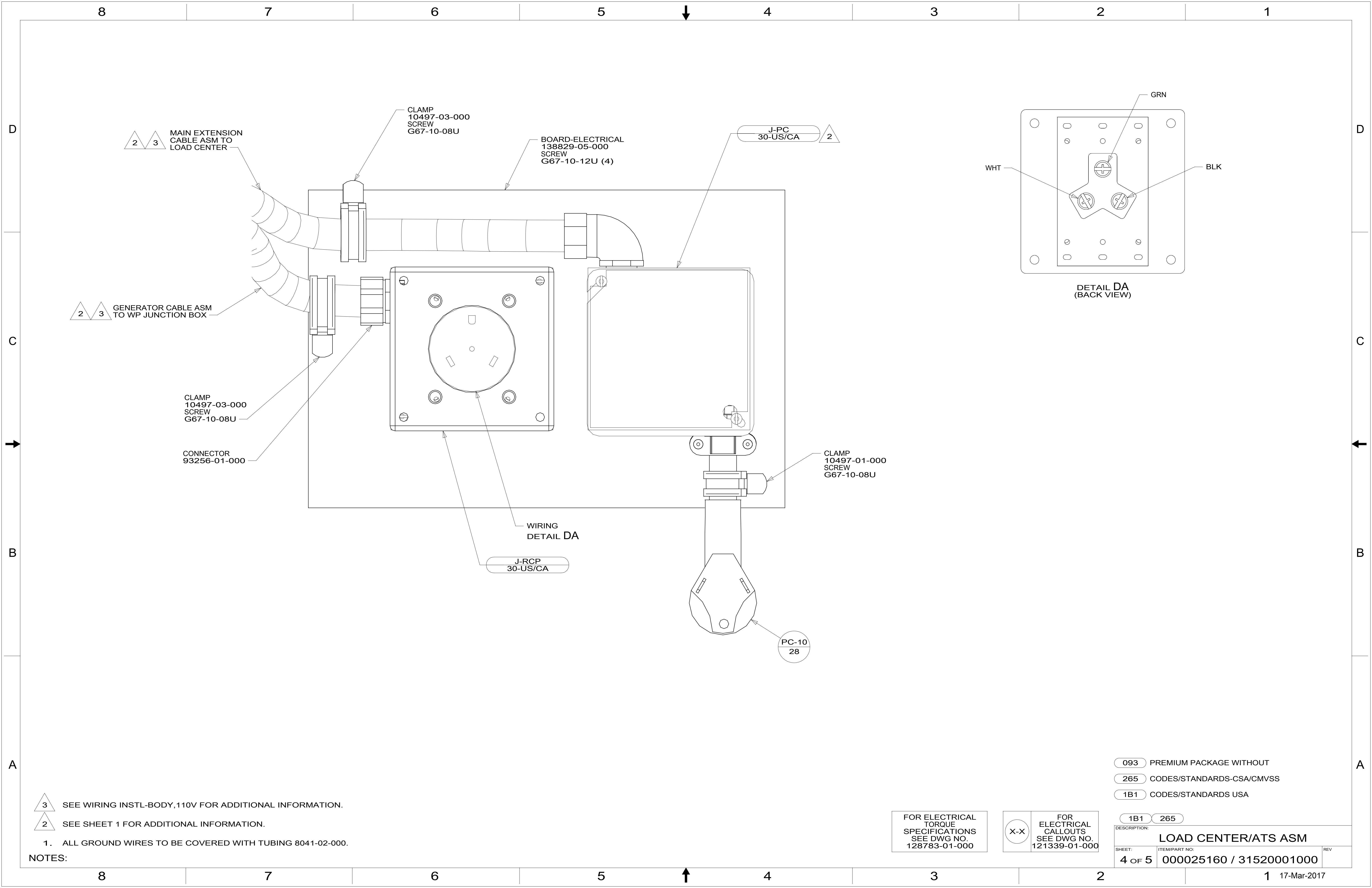
FOR ELECTRICAL TORQUE SPECIFICATIONS SEE DWG NO. 128783-01-000

FOR ELECTRICAL CALLOUTS SEE DWG NO. 121339-01-000

265 CODES/STANDARDS-CSA/CMVSS
 1B1 CODES/STANDARDS USA

DESCRIPTION: LOAD CENTER/ATS ASM	
SHEET: 3 OF 5	ITEM/PART NO.: 000025160 / 31520001000
REV	

1 17-Mar-2017



2 3 MAIN EXTENSION CABLE ASM TO LOAD CENTER

CLAMP 10497-03-000 SCREW G67-10-08U

BOARD-ELECTRICAL 138829-05-000 SCREW G67-10-12U (4)

J-PC 30-US/CA 2

2 3 GENERATOR CABLE ASM TO WP JUNCTION BOX

CLAMP 10497-03-000 SCREW G67-10-08U

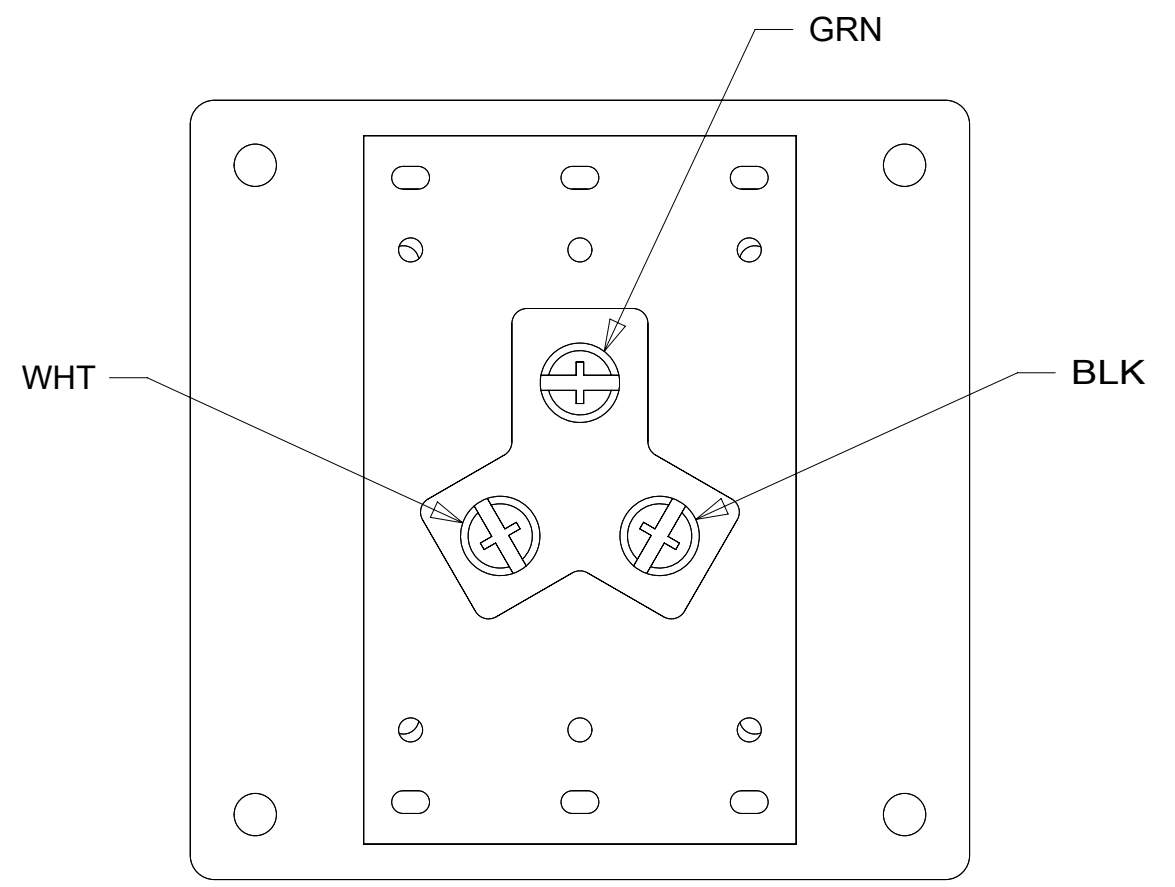
CONNECTOR 93256-01-000

CLAMP 10497-01-000 SCREW G67-10-08U

WIRING DETAIL DA

J-RCP 30-US/CA

PC-10 28



DETAIL DA (BACK VIEW)

3 SEE WIRING INSTL-BODY, 110V FOR ADDITIONAL INFORMATION.

2 SEE SHEET 1 FOR ADDITIONAL INFORMATION.

1. ALL GROUND WIRES TO BE COVERED WITH TUBING 8041-02-000.

NOTES:

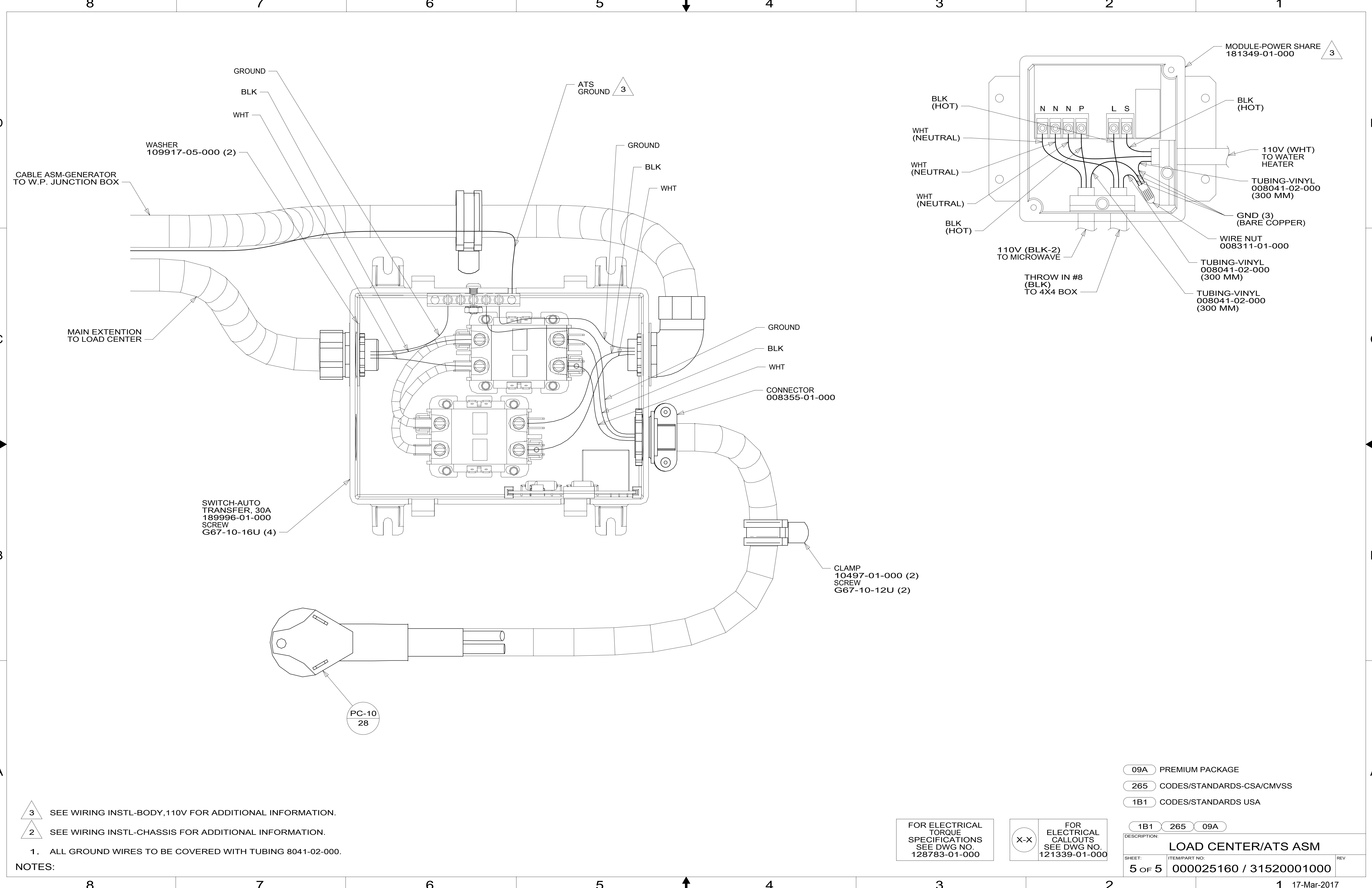
- 093 PREMIUM PACKAGE WITHOUT
- 265 CODES/STANDARDS-CSA/CMVSS
- 1B1 CODES/STANDARDS USA

FOR ELECTRICAL TORQUE SPECIFICATIONS SEE DWG NO. 128783-01-000

FOR ELECTRICAL CALLOUTS SEE DWG NO. 121339-01-000

1B1 265 DESCRIPTION: LOAD CENTER/ATS ASM

SHEET: 4 OF 5	ITEM/PART NO: 000025160 / 31520001000	REV
---------------	---------------------------------------	-----



3 SEE WIRING INSTL-BODY, 110V FOR ADDITIONAL INFORMATION.
 2 SEE WIRING INSTL-CHASSIS FOR ADDITIONAL INFORMATION.

1. ALL GROUND WIRES TO BE COVERED WITH TUBING 8041-02-000.
 NOTES:

FOR ELECTRICAL TORQUE SPECIFICATIONS SEE DWG NO. 128783-01-000

FOR ELECTRICAL CALLOUTS SEE DWG NO. 121339-01-000

- 09A PREMIUM PACKAGE
- 265 CODES/STANDARDS-CSA/CMVSS
- 1B1 CODES/STANDARDS USA

DESCRIPTION:		
LOAD CENTER/ATS ASM		
SHEET:	ITEM/PART NO.:	REV:
5 OF 5	000025160 / 31520001000	